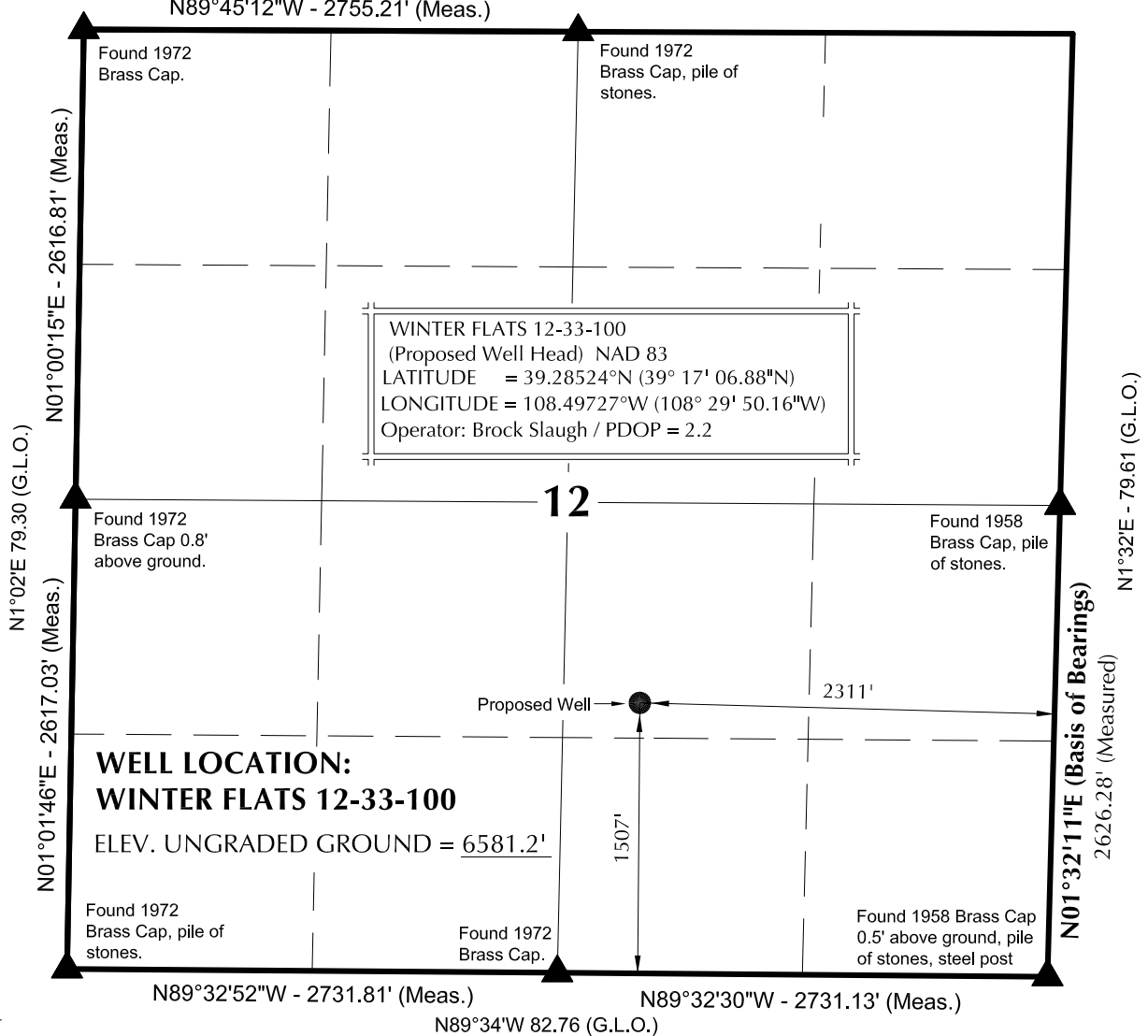


# T9S, R100W, S.L.B.&M.

N89°47'W 83.42 (G.L.O.)

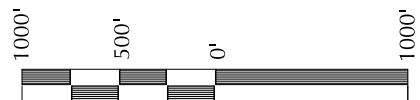
N89°45'12"W - 2755.21' (Meas.)



## NOTES:

▲ = Section Corners Located

- Well footages are measured at right angles to the Section Lines.
- G.L.O. distances are shown in feet or chains.  
1 chain = 66 feet.
- Bearings are based on Global Positioning Satellite observations.
- Surface use of location is grazing. Vegetation consists mainly of sagebrush, cedar trees, pinion trees, oak brush and native grasses.
- See Addendum To Legal Plat For Existing Improvements Within 400' of The Proposed Well Head.
- BASIS OF ELEVATION IS A SPOT ELEVATION AT THE NORTHWEST CORNER OF SECTION 18, T9S, R99W, 6th P.M.. THE ELEVATION OF THE SAID NORTHWEST CORNER IS SHOWN ON THE WINTER FLATS 7.5 MIN. QUADRANGLE AS BEING 6523'.



SCALE

## SURVEYOR'S CERTIFICATE

THIS IS TO CERTIFY THAT THE ABOVE PLAT WAS PREPARED FROM FIELD NOTES OF ACTUAL SURVEYS MADE BY ME OR UNDER MY SUPERVISION AND THAT THE SAME ARE TRUE AND CORRECT TO THE BEST OF MY KNOWLEDGE AND BELIEF.

REGISTERED LAND SURVEYOR  
REGISTRATION NO. 37982  
STATE OF COLORADO

## BLACK HILLS PLATEAU PRODUCTION

### WELL PAD - WINTER FLATS 12-33-100

WINTER FLATS 12-33-100  
WELL PLAT

1507' FSL, 2311' FEL

NW ¼ SE ¼ OF SECTION 12, T9S, R100W,  
6th P.M., MESA COUNTY, COLORADO.



## TIMBERLINE

(435) 789-1365

ENGINEERING & LAND SURVEYING, INC.  
209 NORTH 300 WEST - VERNAL, UTAH 84078

DATE SURVEYED: 06-09-08	SURVEYED BY: B.J.S.	SHEET NO: <b>2a</b> OF 11
DATE DRAWN: 06-17-08	DRAWN BY: M.W.W.	
SCALE: 1" = 1000'	Date Last Revised: 06-12-09	