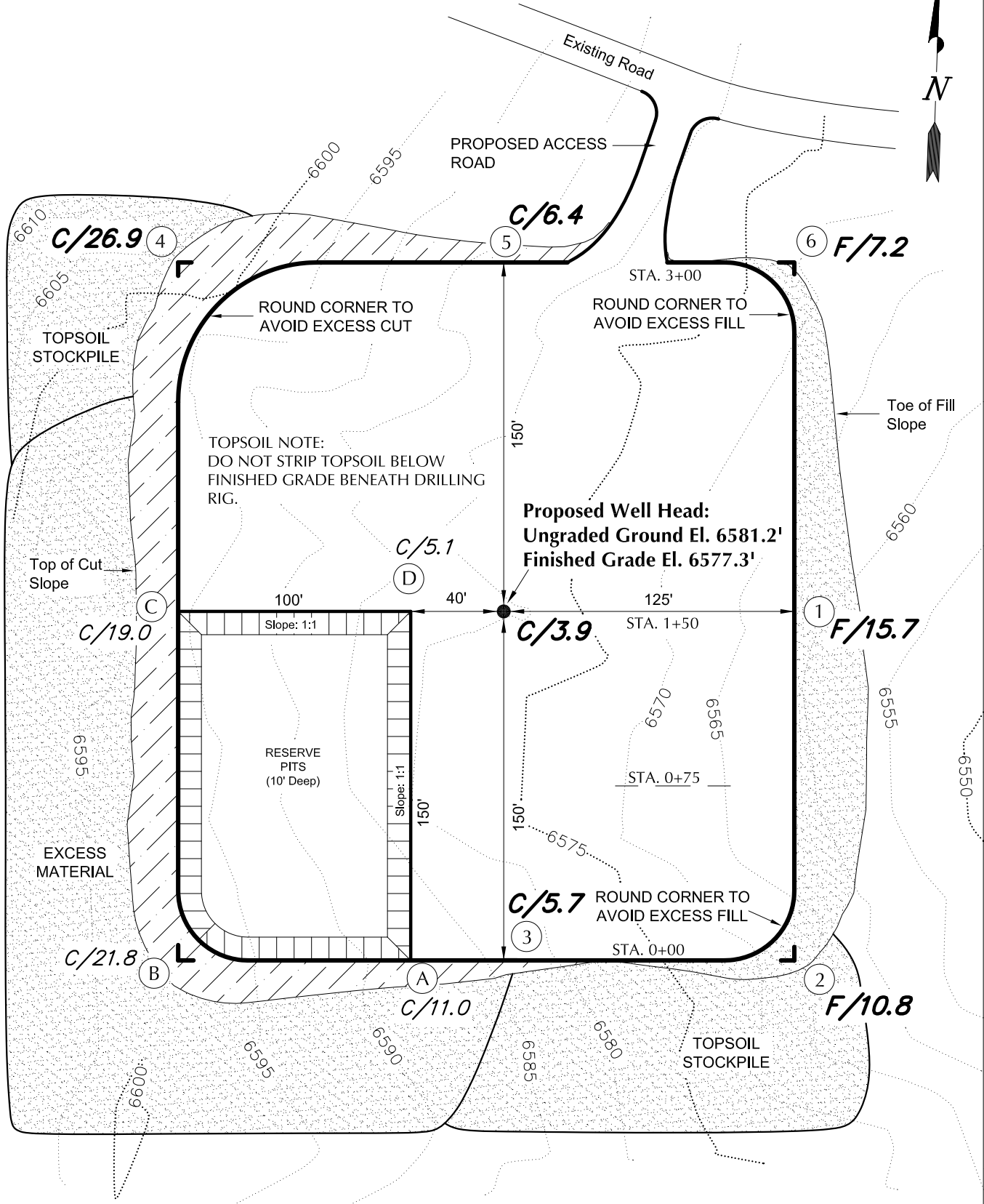


# BLACK HILLS PLATEAU PRODUCTION

## CUT SHEET - WINTER FLATS 12-33-100

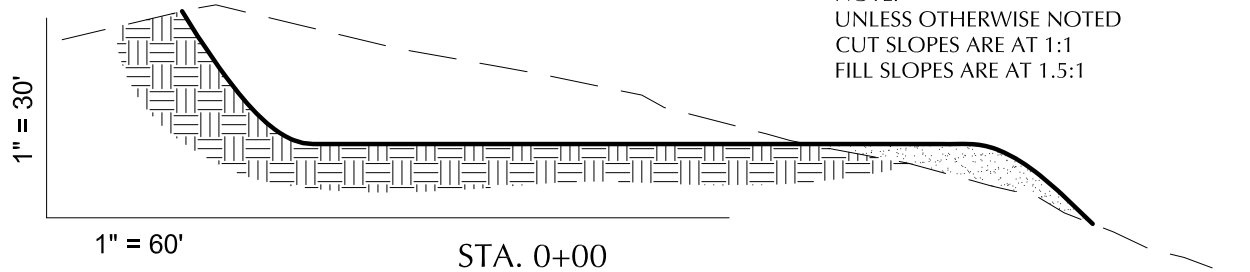
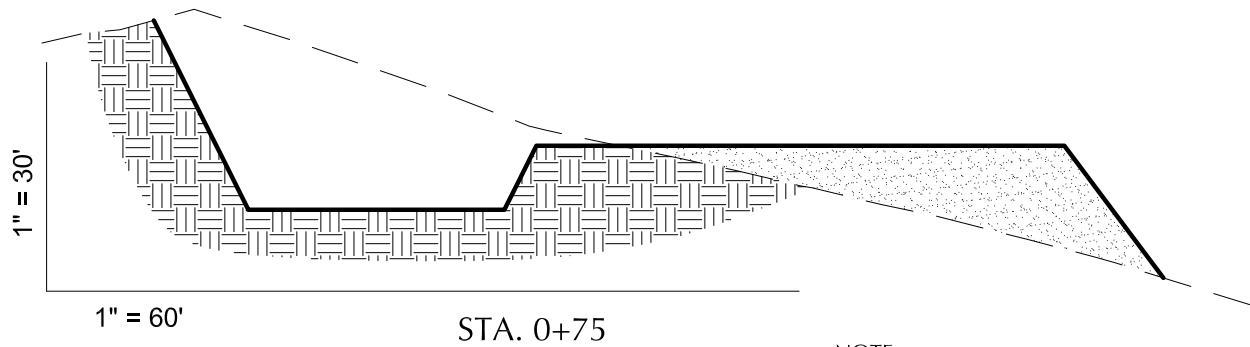
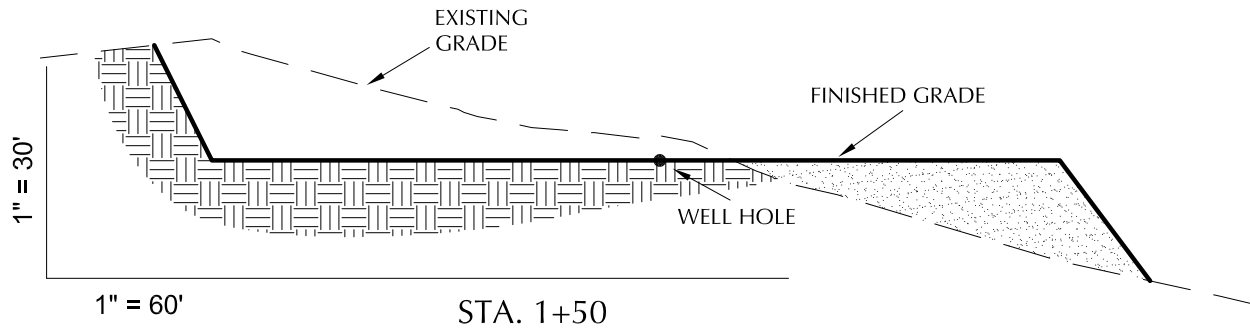
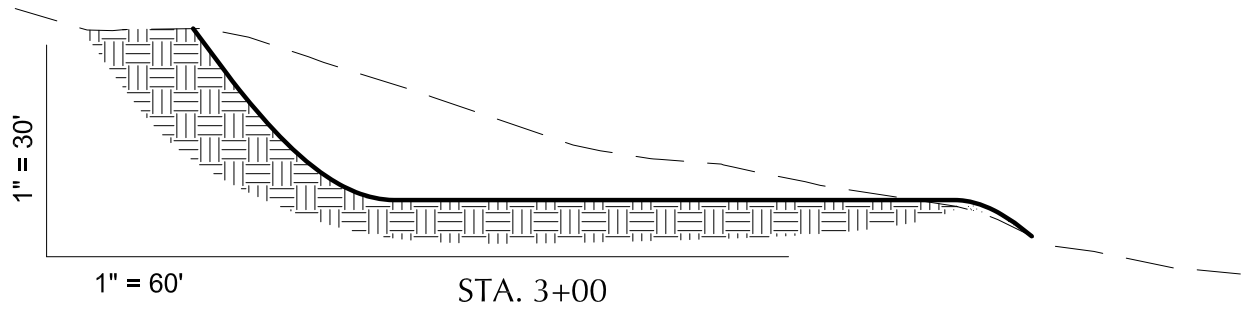


CONTOUR INTERVAL = 5'

Section 12, T9S, R100W, 6th P.M.		Qtr/Qtr Location: NW SE		Footage Location: 1507' FSL & 2311' FEL	
Date Surveyed: 06-10-09	Date Drawn: 06-12-09	Date Last Revision:	<b>TIMBERLINE</b> ENGINEERING & LAND SURVEYING, INC. 209 NORTH 300 WEST - VERNAL, UTAH 84078		SHEET <b>3</b> OF 11
Surveyed By: B.J.S.	Drawn By: M.W.W.	Scale: 1" = 60'			

# BLACK HILLS PLATEAU PRODUCTION

## CROSS SECTION - WINTER FLATS 12-33-100



NOTE:  
UNLESS OTHERWISE NOTED  
CUT SLOPES ARE AT 1:1  
FILL SLOPES ARE AT 1.5:1

### REFERENCE POINTS

250' SOUTHERLY = 6584.3'  
205' SOUTHERLY = 6586.7'  
175' EASTERLY = 6556.1'  
225' EASTERLY = 6550.1'

### ESTIMATED EARTHWORK QUANTITIES

(No shrink or swell adjustments have been used)  
(Expressed in Cubic Yards)

CUT	Excess Material = 15,230
6" Topsoil Stripping = 1,470	Topsoil & Pit Backfill = 6,140
Remaining Location = 23,600	(Full Pit Volume)
TOTAL CUT = 25,070	Excess Unbalance = 9,090
FILL = 9,840	(After Rehabilitation)

Section 12, T9S, R100W, 6th P.M.

Qtr/Qtr Location: NW SE

Footage Location: 1507' FSL & 2311' FEL

Date Surveyed:  
06-10-09

Date Drawn:  
06-12-09

Date Last Revision:

**TIMBERLINE**

(435) 789-1365

SHEET

Surveyed By: B.J.S.

Drawn By: M.W.W.

Scale: 1" = 60'

ENGINEERING & LAND SURVEYING, INC.  
209 NORTH 300 WEST - VERNAL, UTAH 84078

**4**  
OF 11