



SUPERIOR
Black Lick, Pa.
Mercer, Pa.
Wooster, Oh.
Cleveland, Ok.
Trinidad, Co.

DUAL INDUCTION LOG

Company	XTO Energy Inc.		
Well	Apache Canyon 05-11		
Field	Purgatoire River		
County	Las Animas	State	Colorado
Location:	API # : 05 071 09132 00		Other Services cdl neutron
2517' FSL & 2402' FWL			
Permanent Datum	SEC 6	TWP 34S	RGE 67W
Log Measured From	Ground Level	Elevation	7490'
Drilling Measured From	Ground Level	Elevation	K.B. ----- D.F. ----- G.L. 7490'
Date	07-07-07		
Run Number	One		
Depth Driller	2110'		
Depth Logger	2109'		
Bottom Logged Interval	2107'		
Top Log Interval	Surface Casing		
Casing Driller	8 5/8" @ 496'		
Casing Logger	496'		
Bit Size	7 7/8"		
Type Fluid in Hole	Water		
Density / Viscosity	///		
pH / Fluid Loss	///		
Source of Sample	///		
Rm @ Meas. Temp	///		
Rmf @ Meas. Temp	///		
Rmc @ Meas. Temp	///		
Source of Rmf / Rmc	///		
Rm @ BHT	///		
Time Circulation Stopped	7:30 a.m.		
Time Logger on Bottom	10:00 a.m.		
Maximum Recorded Temperature	112		
Equipment Number	T697		
Location	Trinidad		
Recorded By	L. Smith		
Witnessed By	Mr. Joe Smith		

<<< Fold Here >>>

All interpretations are opinions based on inferences from electrical or other measurements and we cannot and do not guarantee the accuracy or correctness of any interpretation, and we shall not, except in the case of gross or willful negligence on our part, be liable or responsible for any loss, costs, damages, or expenses incurred or sustained by anyone resulting from any interpretation made by any of our officers, agents or employees. These interpretations are also subject to our general terms and conditions set out in our current Price Schedule.

Comments

First Bosque entrance just before Weston, turn right on Almasito canyon, turn right at windmill, approx. 1 mile drive thru location on right.



SUPERIOR
Black Lick, Pa.
Mercer, Pa.
Wooster, Oh.
Cleveland, Ok.
Trinidad, Co.

Main Pass

Database File: xtoac0511.db
Dataset Pathname: pass2.1
Presentation Format: dil
Dataset Creation: Sat Jul 07 11:40:20 2007 by Calc Open-Cased 061129
Charted by: Depth in Feet scaled 1:240

0	GR (GAPI)	200
-100	SP (mV)	100

0.2	RILM (Ohm-m)	2000
0.2	RILD (Ohm-m)	2000
0.2	RLL3 (Ohm-m)	2000

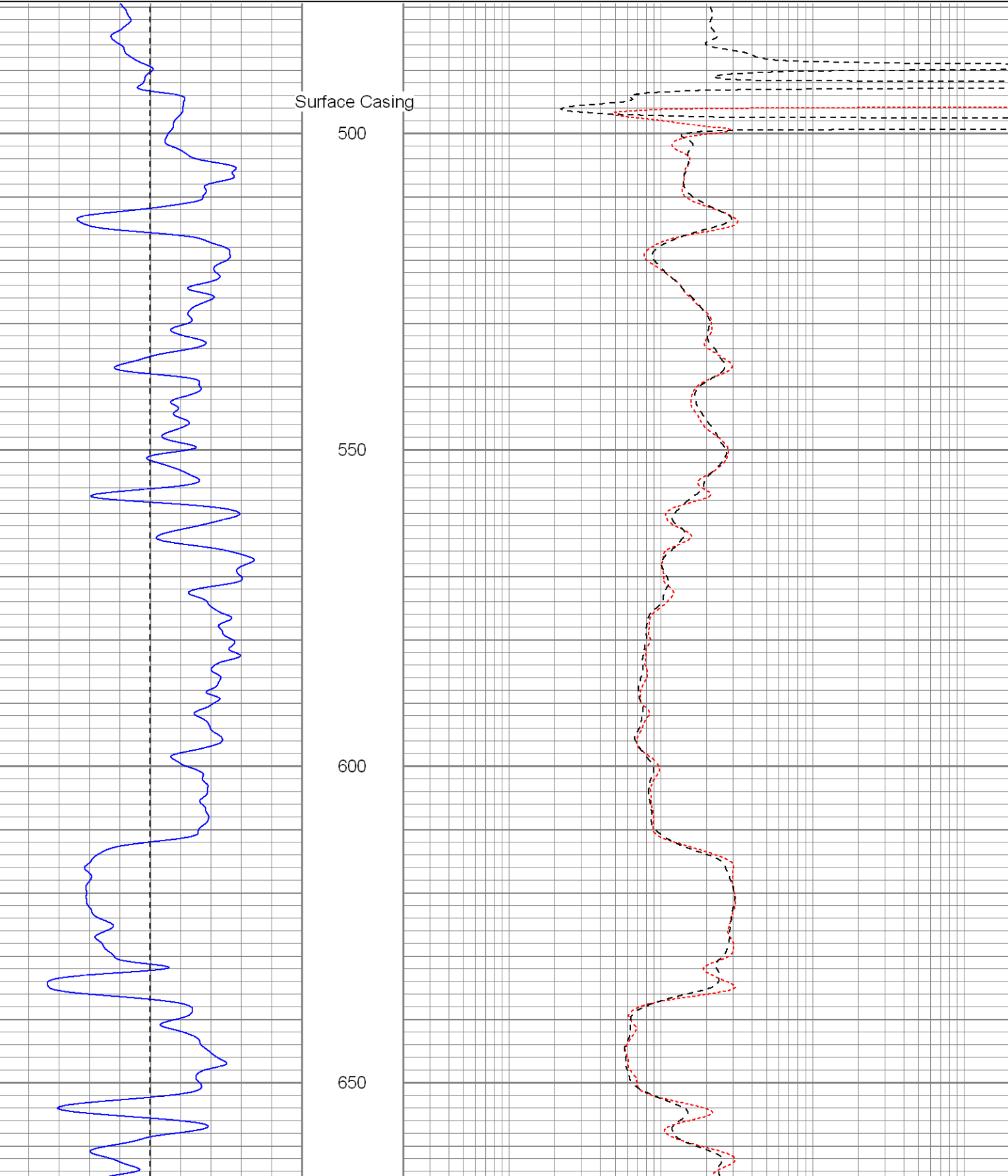
Surface Casing

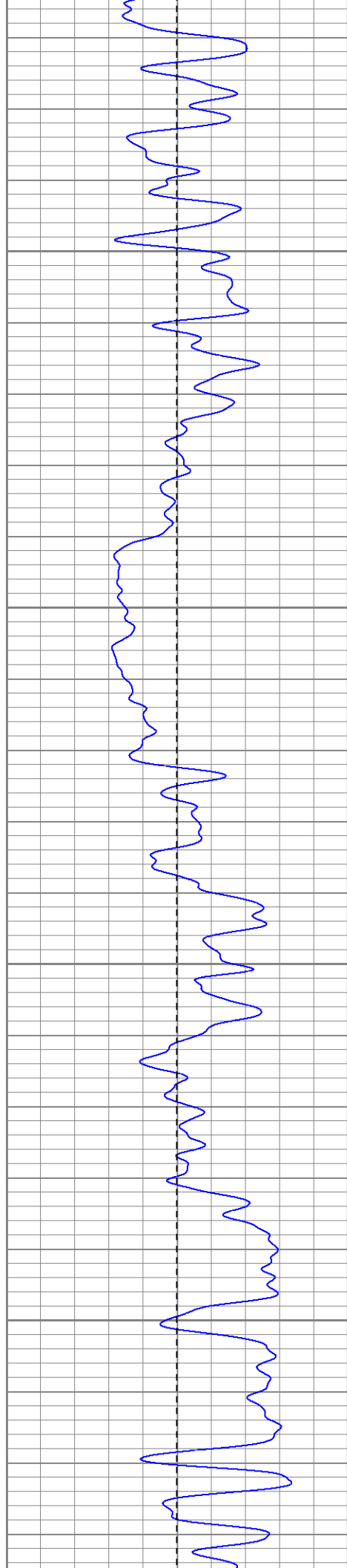
500

550

600

650



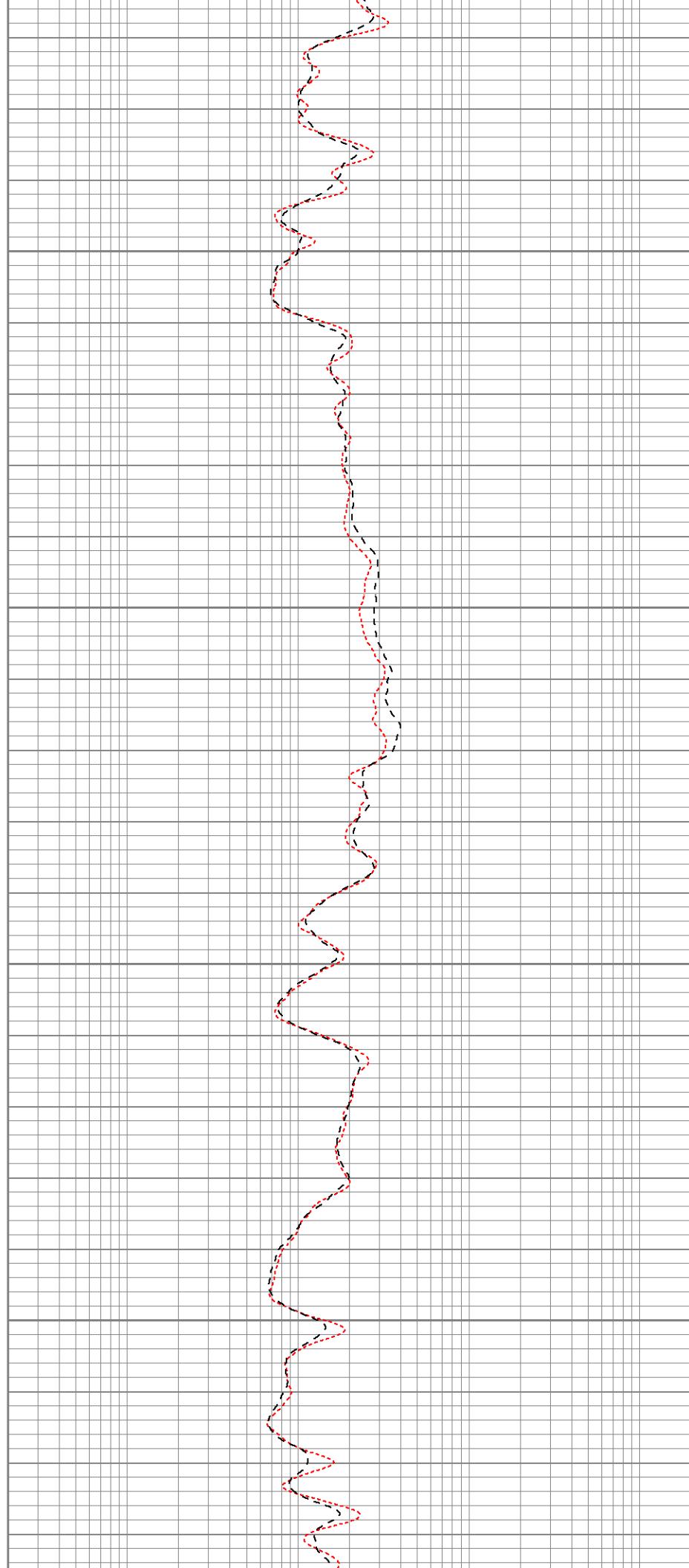


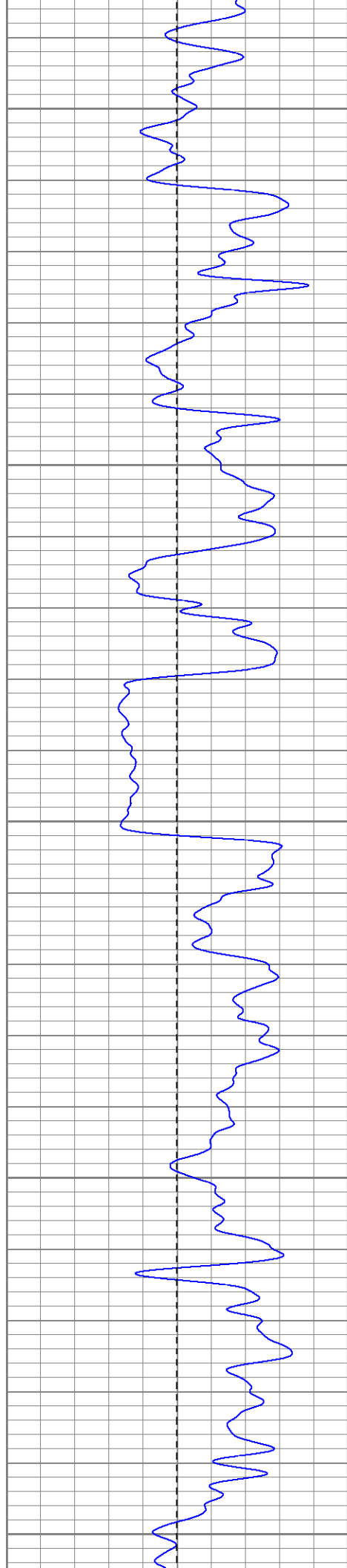
700

750

800

850





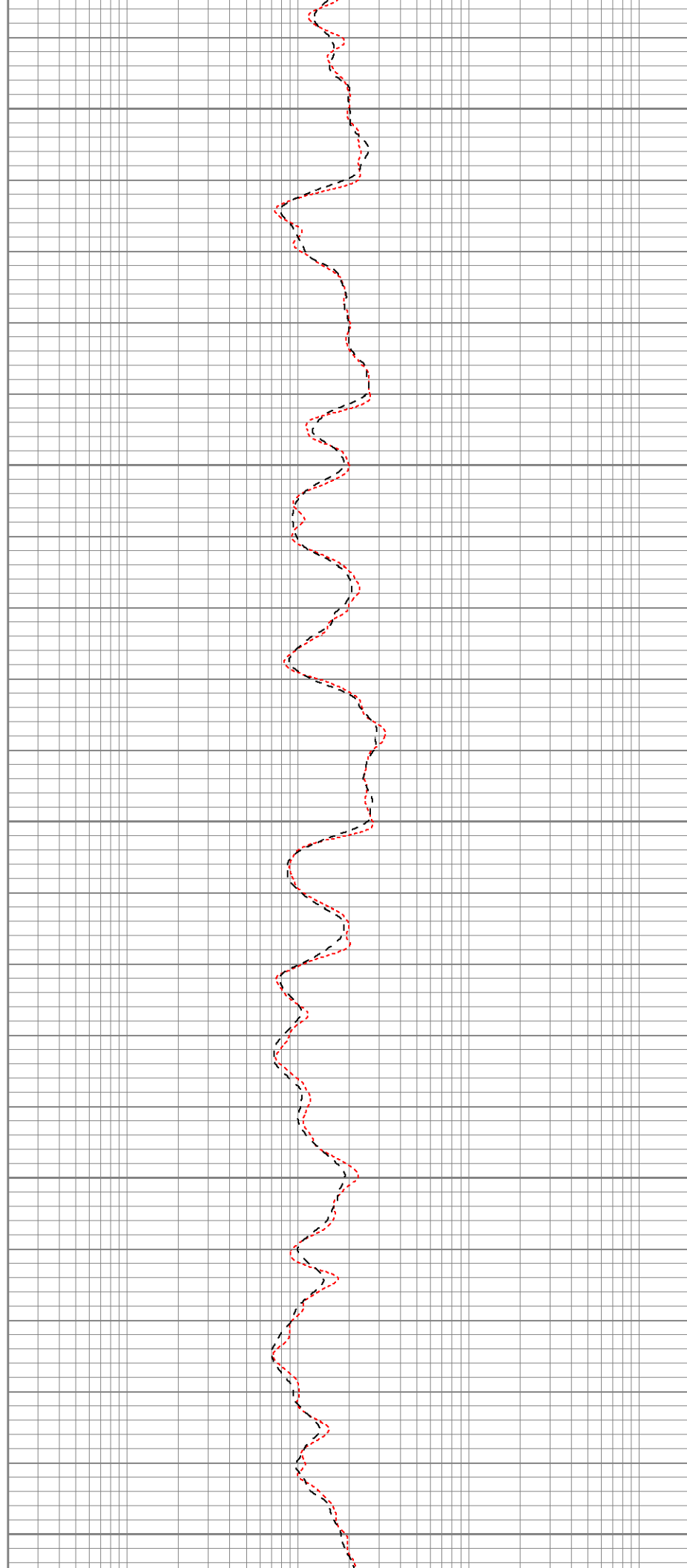
900

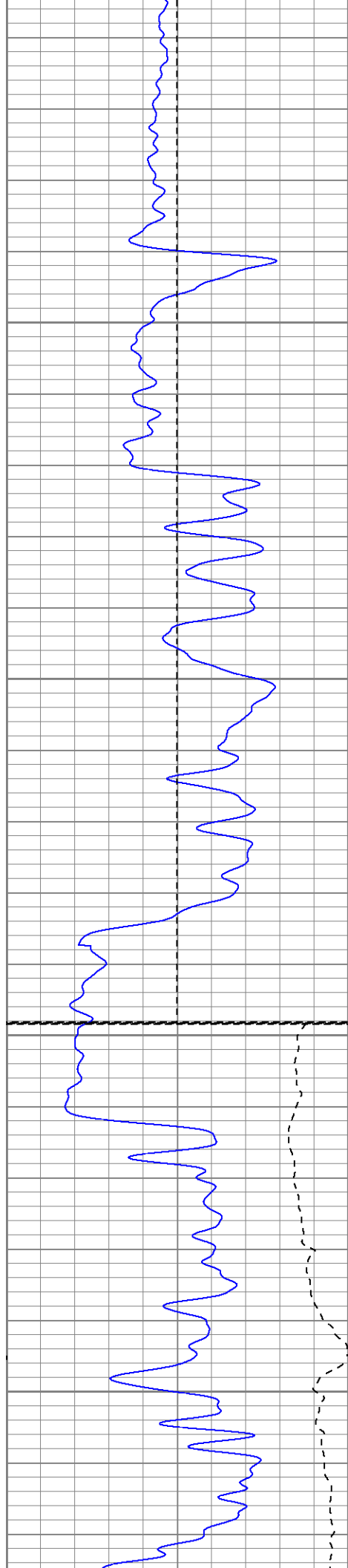
950

1000

1050

1100



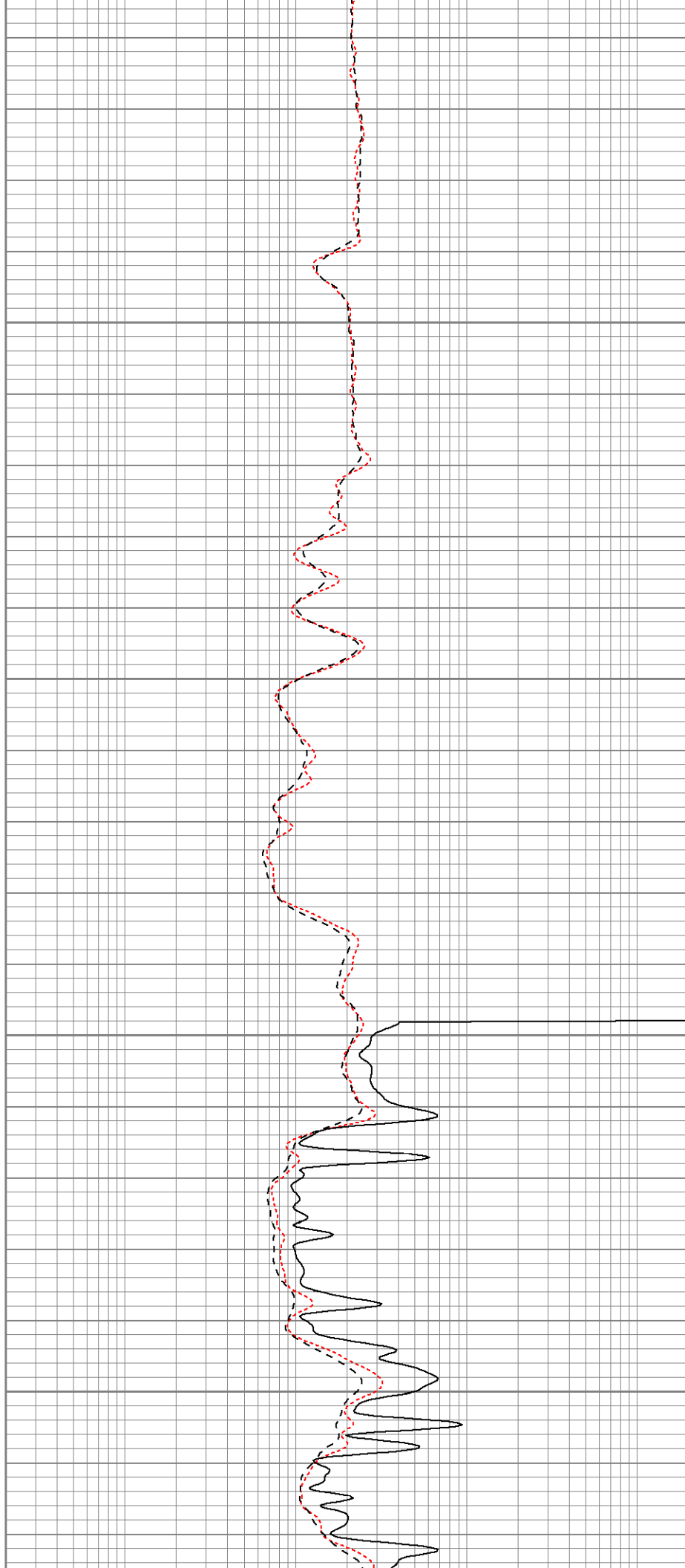


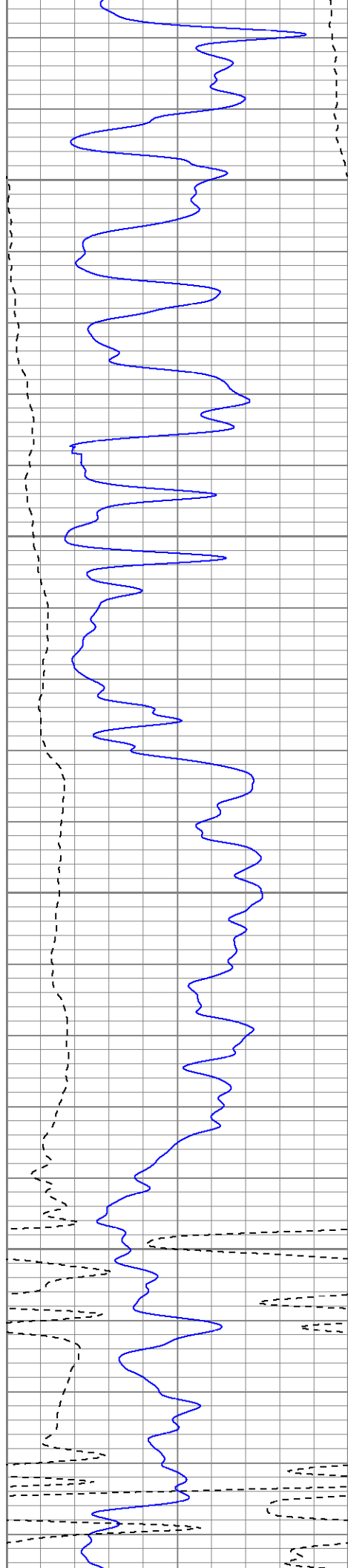
1150

1200

Fluid Level
1250

1300



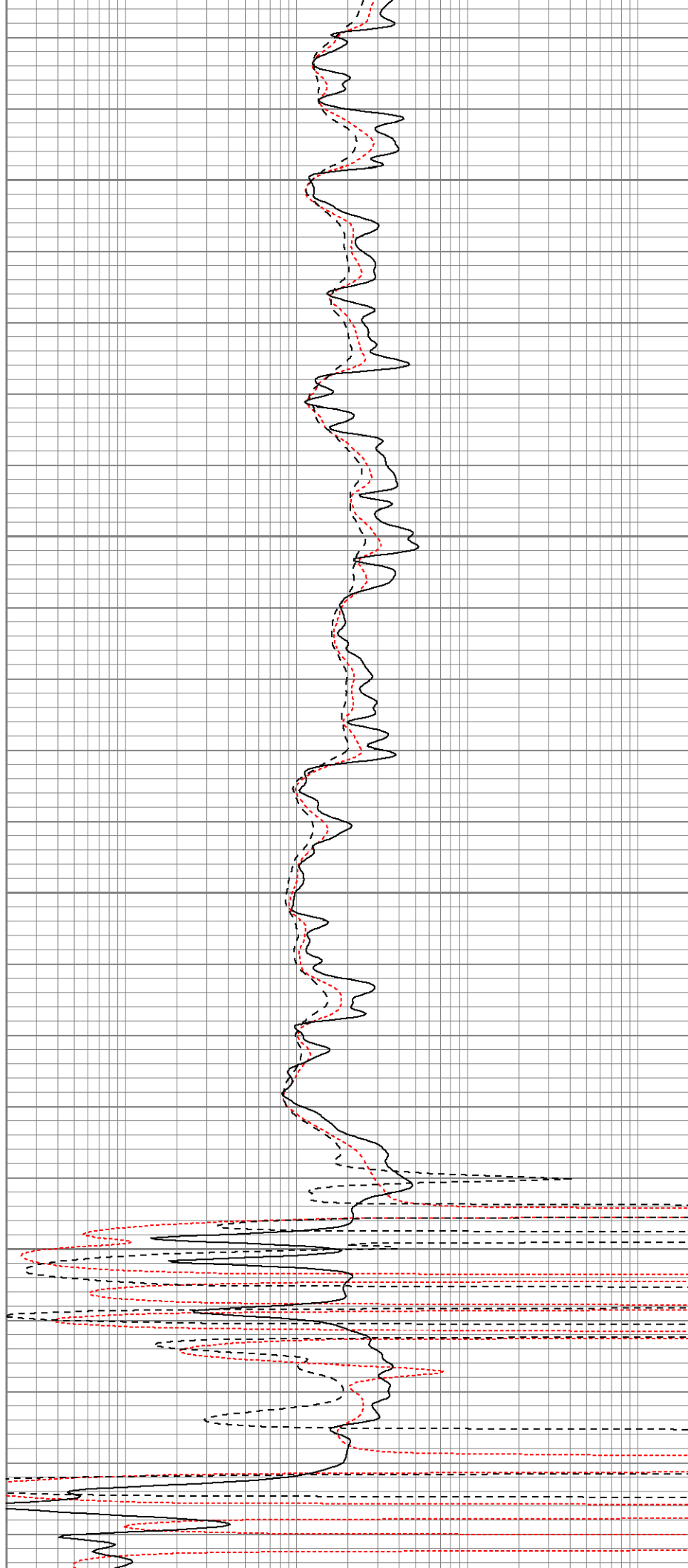


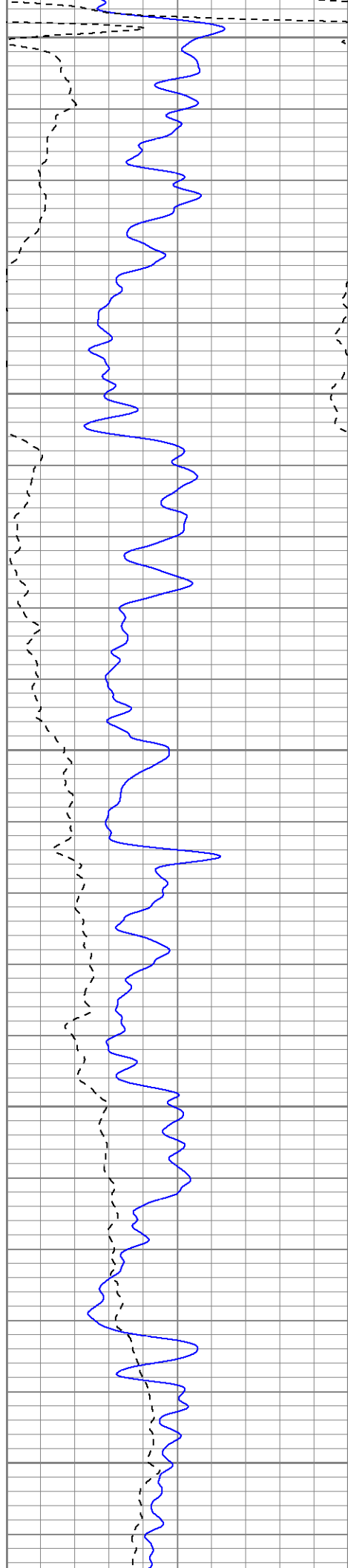
1350

1400

1450

1500





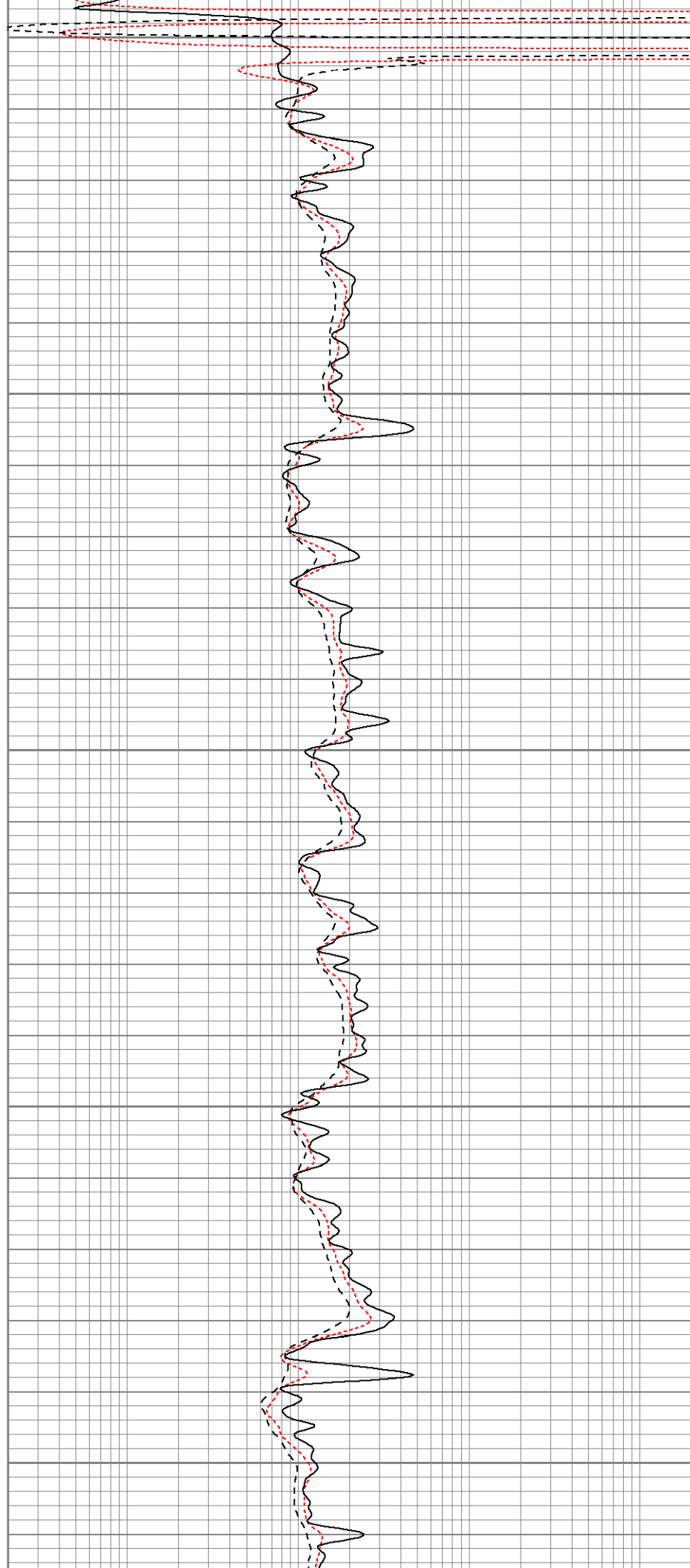
1550

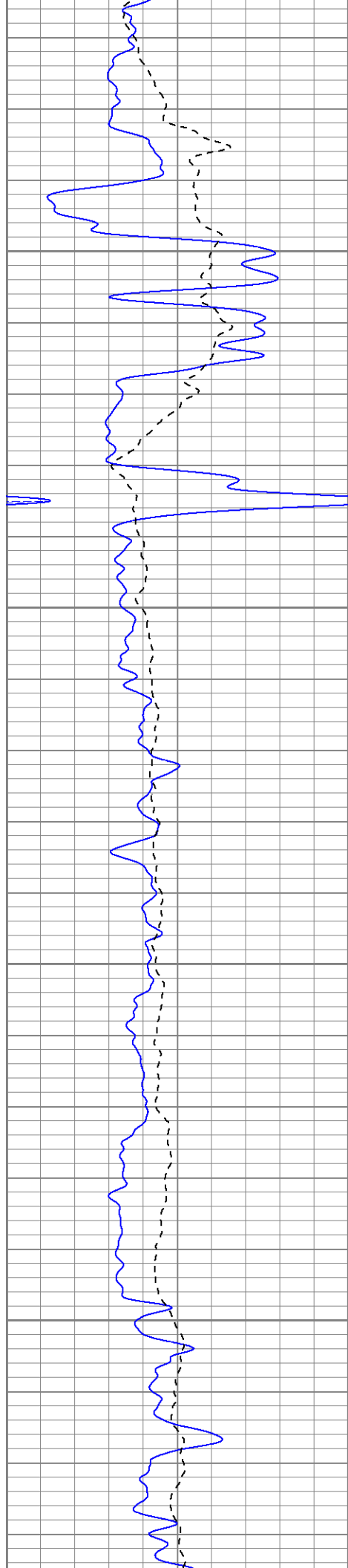
1600

1650

1700

1750



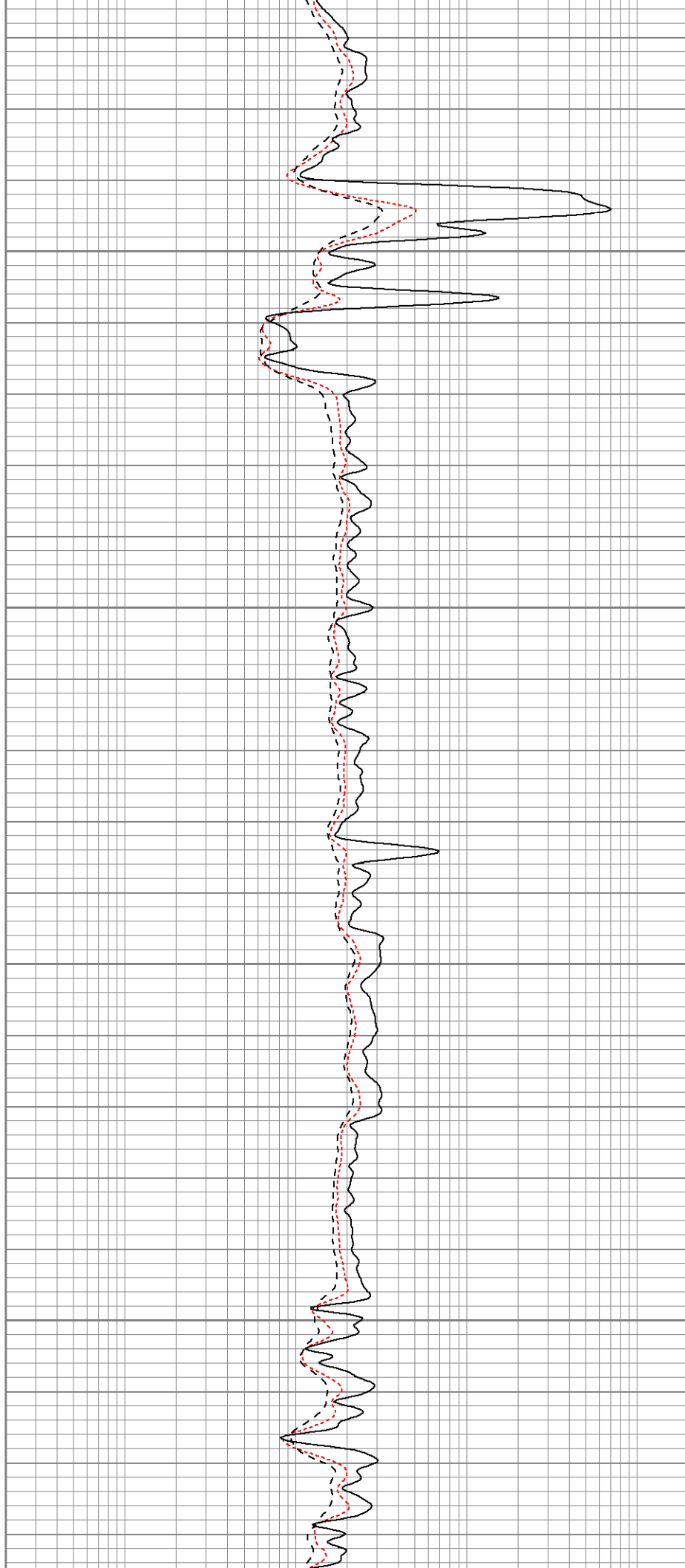


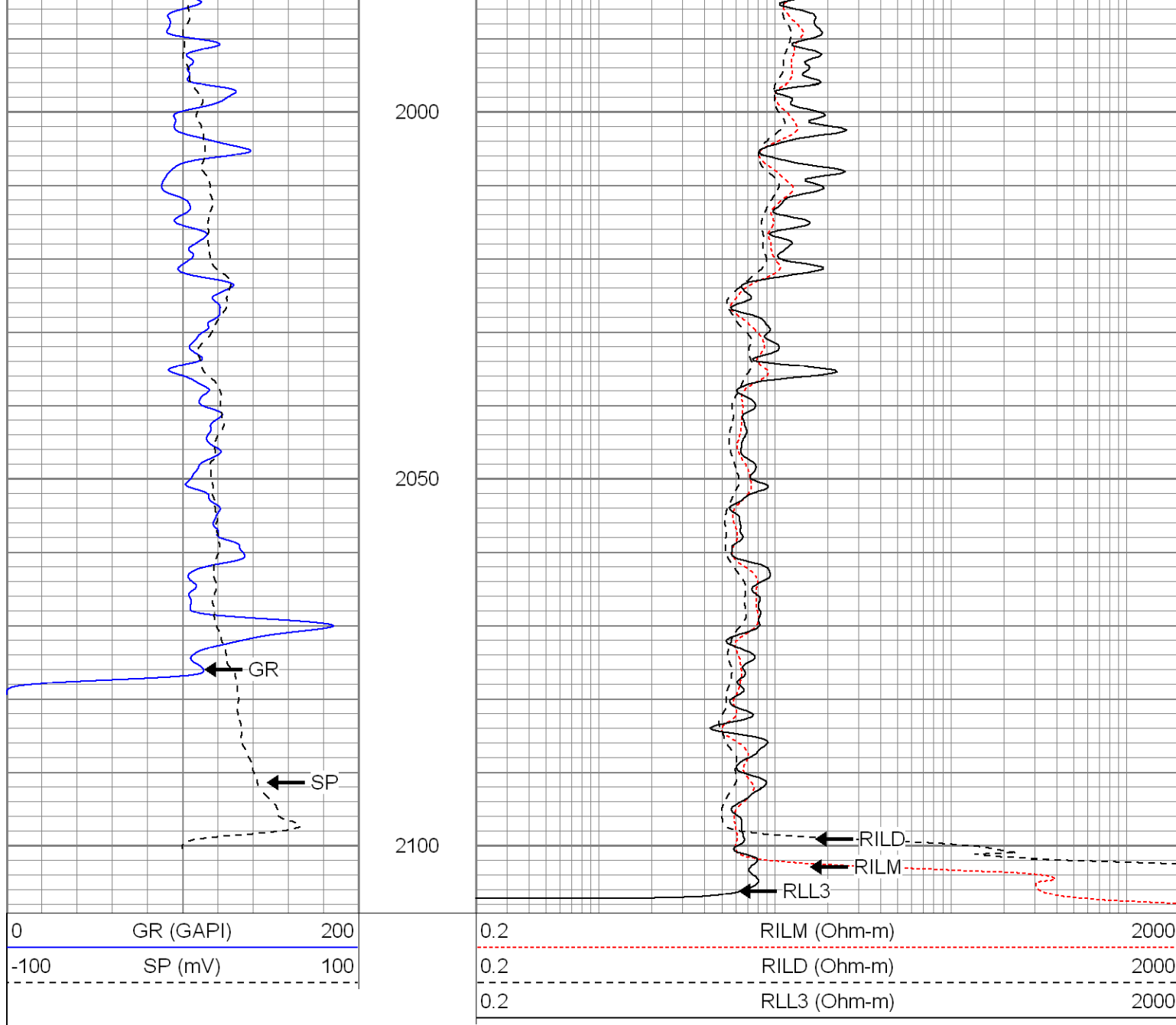
1800

1850

1900

1950





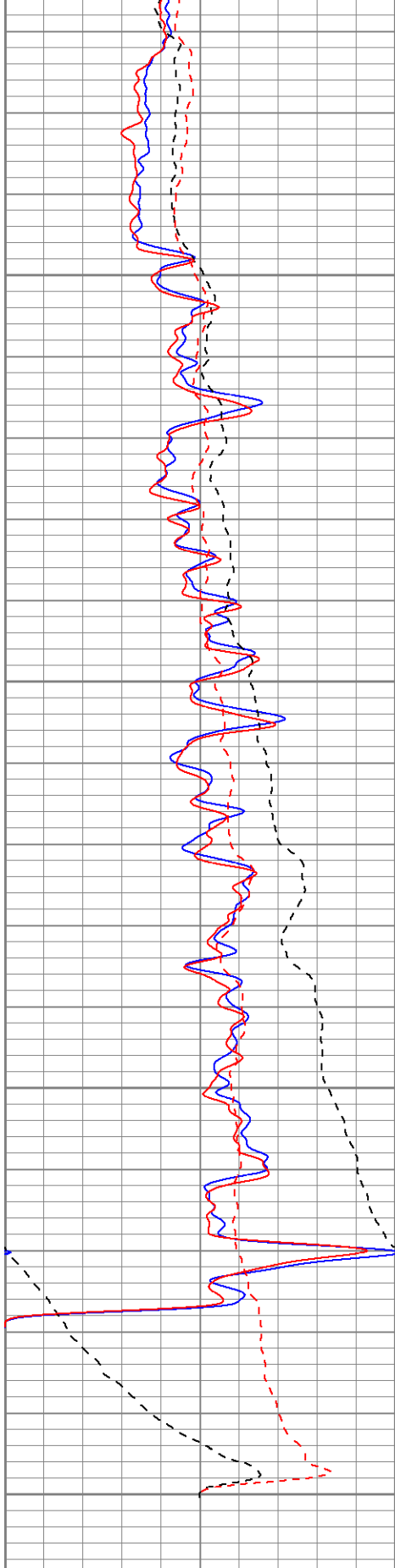
SUPERIOR

Black Lick, Pa.
 Mercer, Pa.
 Wooster, Oh.
 Cleveland, Ok.
 Trinidad, Co.

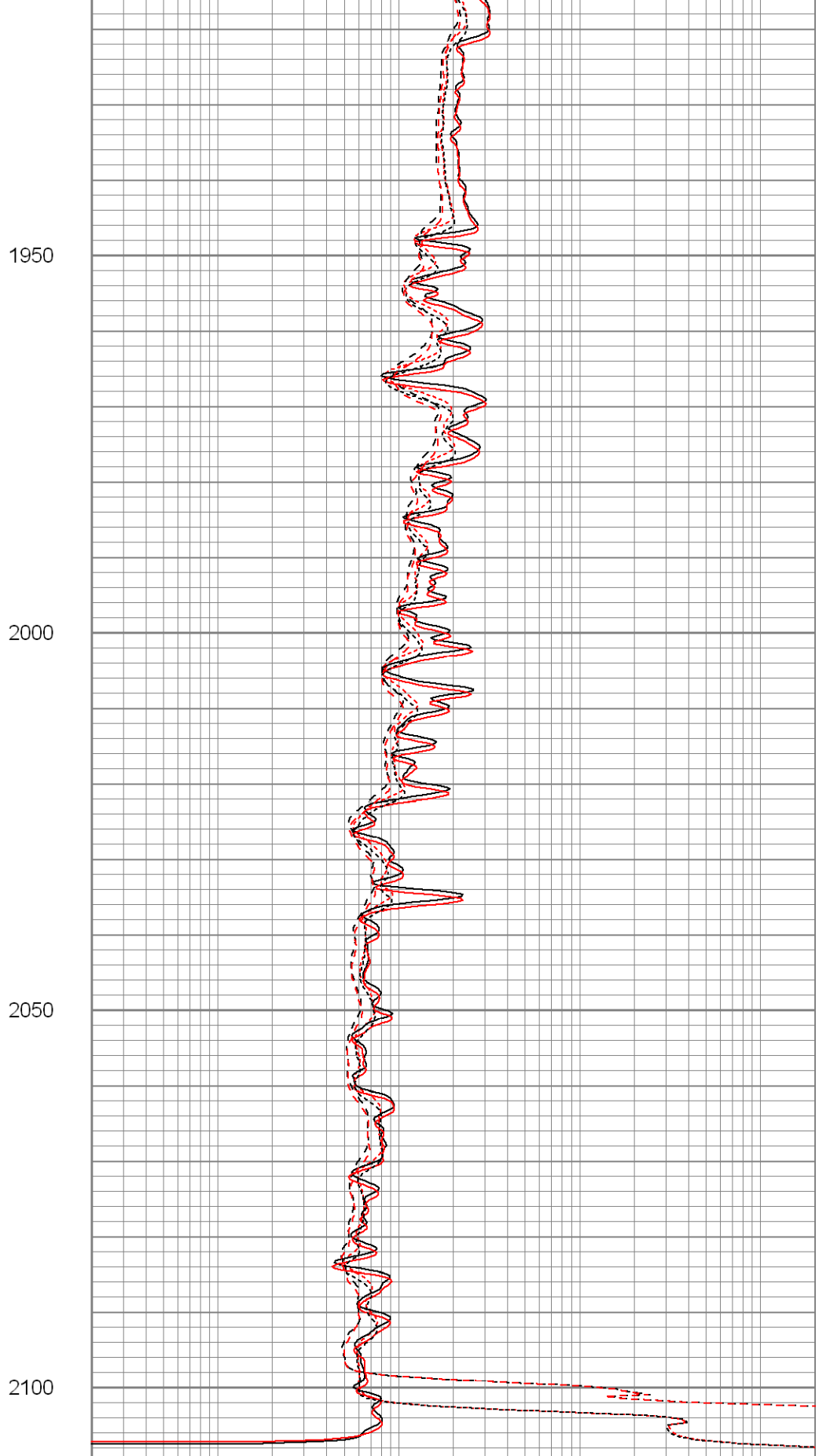
Repeat Pass

Database File: xtoac0511.db
 Dataset Pathname: pass1.1
 Presentation Format: dil
 Dataset Creation: Sat Jul 07 11:06:42 2007 by Calc Open-Cased 061129
 Charted by: Depth in Feet scaled 1:240

0	GR (GAPI)	200	0.2	RILM (Ohm-m)	2000
-100	SP (mV)	100	0.2	RILD (Ohm-m)	2000
0	GR-repeat (GAPI)	200	0.2	RLL3 (Ohm-m)	2000
-100	SP-repeat (mV)	100	0.2	RLL3-repeat (Ohm-m)	2000
			0.2	RILM-repeat (Ohm-m)	2000
			0.2	RILD-repeat (Ohm-m)	2000



0	GR (GAPI)	200
-100	SP (mV)	100
0	GR-repeat (GAPI)	200
-100	SP-repeat (mV)	100



0.2	RILM (Ohm-m)	2000
0.2	RILD (Ohm-m)	2000
0.2	RLL3 (Ohm-m)	2000
0.2	RLL3-repeat (Ohm-m)	2000
0.2	RILM-repeat (Ohm-m)	2000
0.2	RILD-repeat (Ohm-m)	2000

Calibration Report

Database File: xtoac0511.db
 Dataset Pathname: pass1
 Dataset Creation: Sat Jul 07 10:20:58 2007 by Log Open-Cased 061129

Dual Induction Calibration Report

Serial-Model: 5375-G
 Surface Cal Performed: Thu Jul 05 11:35:02 2007
 Downhole Cal Performed: Thu Jul 05 11:35:16 2007

Surface Calibration

Readings				References			Results	
Loop:	Air	Loop		Air	Loop		m	b
Deep	0.001	0.620	V	0.000	500.000	mmho-m	807.659	-1.119
Medium	0.005	0.743	V	0.000	550.000	mmho-m	744.727	-3.505
Internal:	Zero	Cal		Zero	Cal		m	b
Deep	0.001	0.620	V	0.000	500.000	mmho-m	807.698	-1.159
Medium	0.005	0.743	V	0.000	550.000	mmho-m	744.801	-3.569

Downhole Calibration

Readings				References			Results	
Internal:	Zero	Cal		Zero	Cal		m	b
Deep	0.123	499.901	mmho-m	0.039	500.015	mmho-m	1.000	-0.084
Medium	0.245	549.982	mmho-m	0.064	550.009	mmho-m	1.000	-0.182
Shallow	2.506	0.009	V	500.000	2.000	Ohm-m	150.000	-5.000

Compensated Density Calibration Report

Serial-Model: 2118-poilex
 Source / Verifier: /
 Master Calibration Performed: Mon May 14 16:51:32 2007

Master Calibration







Density			Far Detector	Near Detector
Magnesium	1.710	g/cc	665.94	685.05 cps
Aluminum	2.590	g/cc	149.68	463.33 cps
Spine Angle = 75.32			Density/Spine Ratio = 0.570	
Size			Reading	
Small Ring	7.85	in	4.00	V
Large Ring	14.00	in	9.25	V

Gamma Ray Calibration Report

Serial Number: 2001
 Tool Model: OH
 Performed: Tue May 29 19:51:06 2007

Calibrator Value: 1.0 GAPI

Background Reading:	0.0	cps
Calibrator Reading:	1.0	cps
Sensitivity:	0.2500	GAPI/cps
Neutron Calibration Report		
Serial Number:	5145	
Tool Model:	G	
Performed:	Mon Apr 23 18:30:25 2007	
Calibrator Value:	1200	NAPI
Calibrator Reading:	1700	cps
Sensitivity:	1	NAPI/cps

Sensor	Offset (ft)	Schematic	Description	Len (ft)	OD (in)	Wt (lb)
NEU	37.19		None	0.75	1.50	5.00
			NEU-G (5145) Gearhart Epithermal	5.75	3.50	85.00
GR	31.62		GR-OH (2001) SIE	3.50	3.25	40.00
			CDL-poilex (2118)	8.79	4.00	275.00
LSD	23.45					
DCAL	23.04					
SSD	22.91					
CILD	10.60		DIL-G (5375) Gearhart	20.83	4.00	345.00
SP	10.60					
CILM	6.89					
RLL3	1.70					
Dataset:			xtoac0511.db: field/well/run1/pass1			
Total Length:			39.62 ft			
Total Weight:			750.00 lb			
O.D.			4.00 in			