



CBL-VDL
Gamma Ray
Gasing Collar Log

COMPANY ENCANA OIL & GAS (USA)

WELL HMU 1-11C (12SW)

FIELD MAMM CREEK

COUNTY	GARFIELD	STATE	COLORADO
--------	----------	-------	----------

SHL: NE SE 3993' FNL, 290' FEL
BHL: NE SW 3960' FNL, 1880' FWL

Elevation

K.B. 7313 FT

D.F. 7312 FT

G.L. 7298 FT

API Serial No.

05045114070000

Section 2

Township

Range
Q31A/

Permanent Datum: Ground Level Elevation 7298 FT

Log Measured from 15 feet above Permanet Datum

Drilling Measured From Kelly Bushing

NONE

Other Services

Date	08/22/08	Type of Fluid	WATER			
Number of Runs	ONE	Fluid Level	FULL			
Type of Log	CBL-RAL-VDL-GR-CCL	Wellhead Pressure	0 PSI			
Depth Driller (OH)	9415 FT	Max. Temperature	NOT OBSERVED			
Depth Driller (CH)	9348 FT	Operating Rig Time	2 HRS			
P.B.T.D. by Logger	5441 FT	Recorded by	D. ADAMS, N. WUHLAR			
Bottom Log Interval	5440 FT	Witnessed by	B. BREWER			
Logged Interval	1740 FT	Apparent Cement Top	SEE REMARKS			
Top Log Interval	3700 FT	Unit Number / Location	WL 3 / Grand Junction			
Zone(s) of Interest	N/A	Sondex System Version	CSS Logger XP v3.1			
Gun Type & Size	N/A	Service Rig/Picker	MONUMENT			
Charge Type	N/A	Operator(s)	S. ELIAS			
		I. APOLINA	C. POTRAS			
Casing Record	Size	Weight	Grade	Joint Type	From	To
Production Casing	4.5"	11.6#			Surface	TD

Equipment Data

Service Order	WA03083044	Upper Tool	1029
AFE / P.O.	21818WOE0808	Lower Tool	1029
		Centralizer	BOW SPRING
CPU Serial No.	LPA03		
DAS Serial No.	LPA03	Reference Company	SCHLUMBERGER
		Date	4-JAN-2006
Field Prints	2	Type	CBL
Final Prints	2	Pass	MAIN

Remarks

In making interpretations of logs, Pure Energy employees will give the customer the benefit of their best judgement. However, since all interpretations are opinions based on inferences from electrical or other measurements, we cannot, nor do we guarantee the correctness or accuracy of these interpretations. Pure Energy shall not be responsible or liable for any cost damages, loss or expenses whatsoever incurred or sustained by the customer resulting from any interpretation made by any employee of Pure Energy Services Ltd.

SQUEEZE PERFS @ 5250'

CEMENT TOP TO BE EVALUATED BY LOG ANALYST

Cement Details:

NO DATA PRESENT

RUN: MAIN PASS

DIR: UP

DATE: 08/22/08

Time Mark [0.0s]

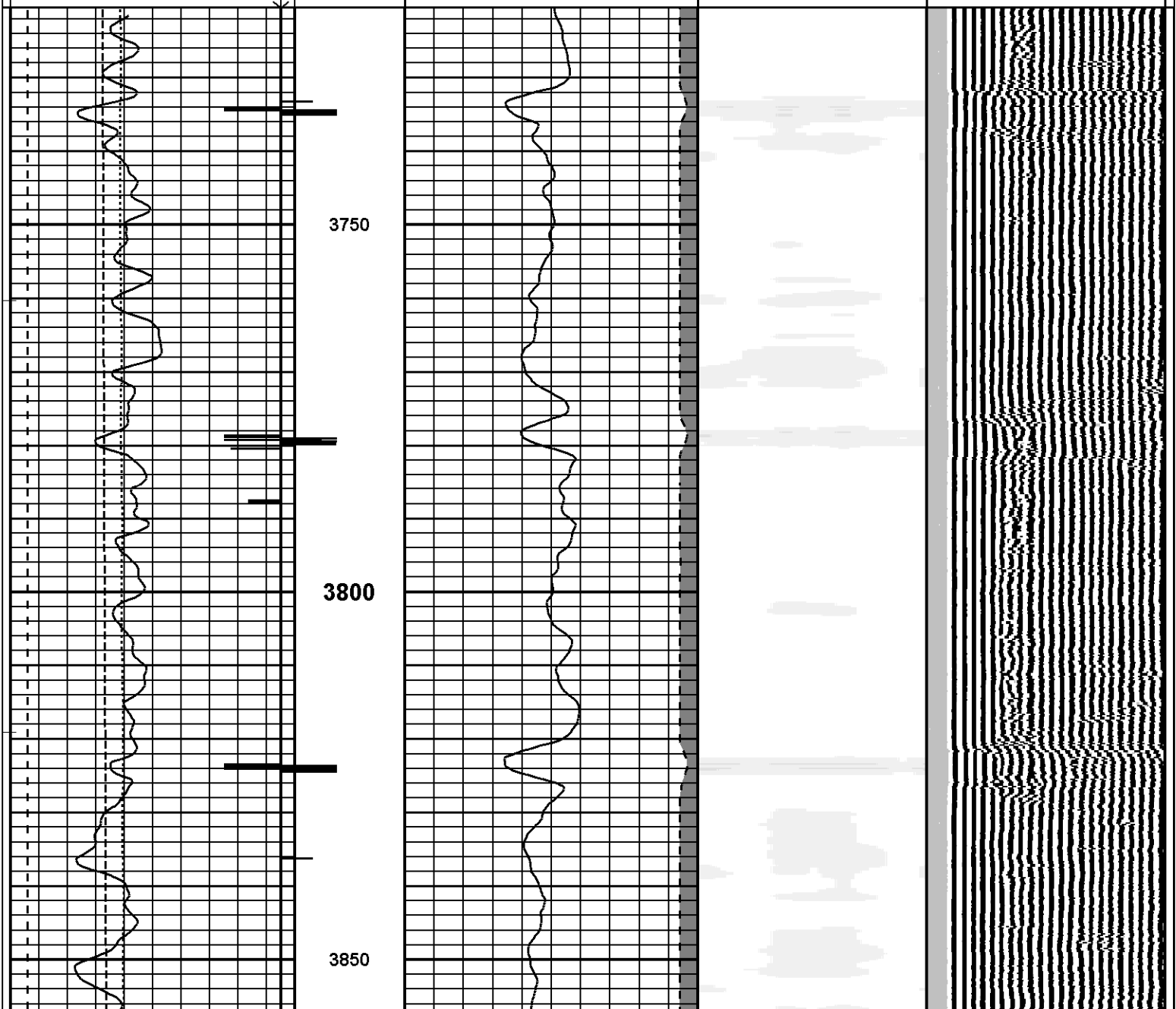
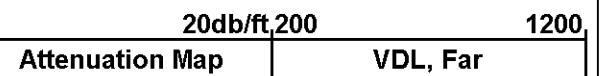
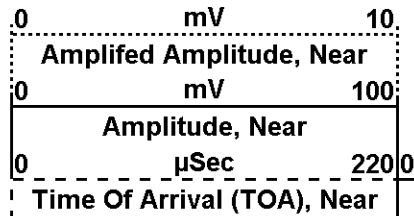
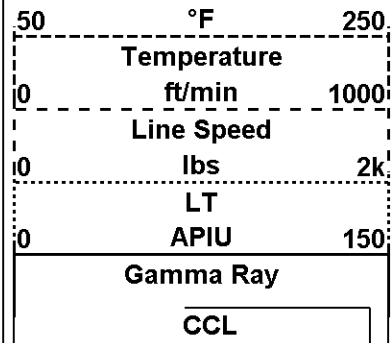
MAIN PASS @ 0 PSI

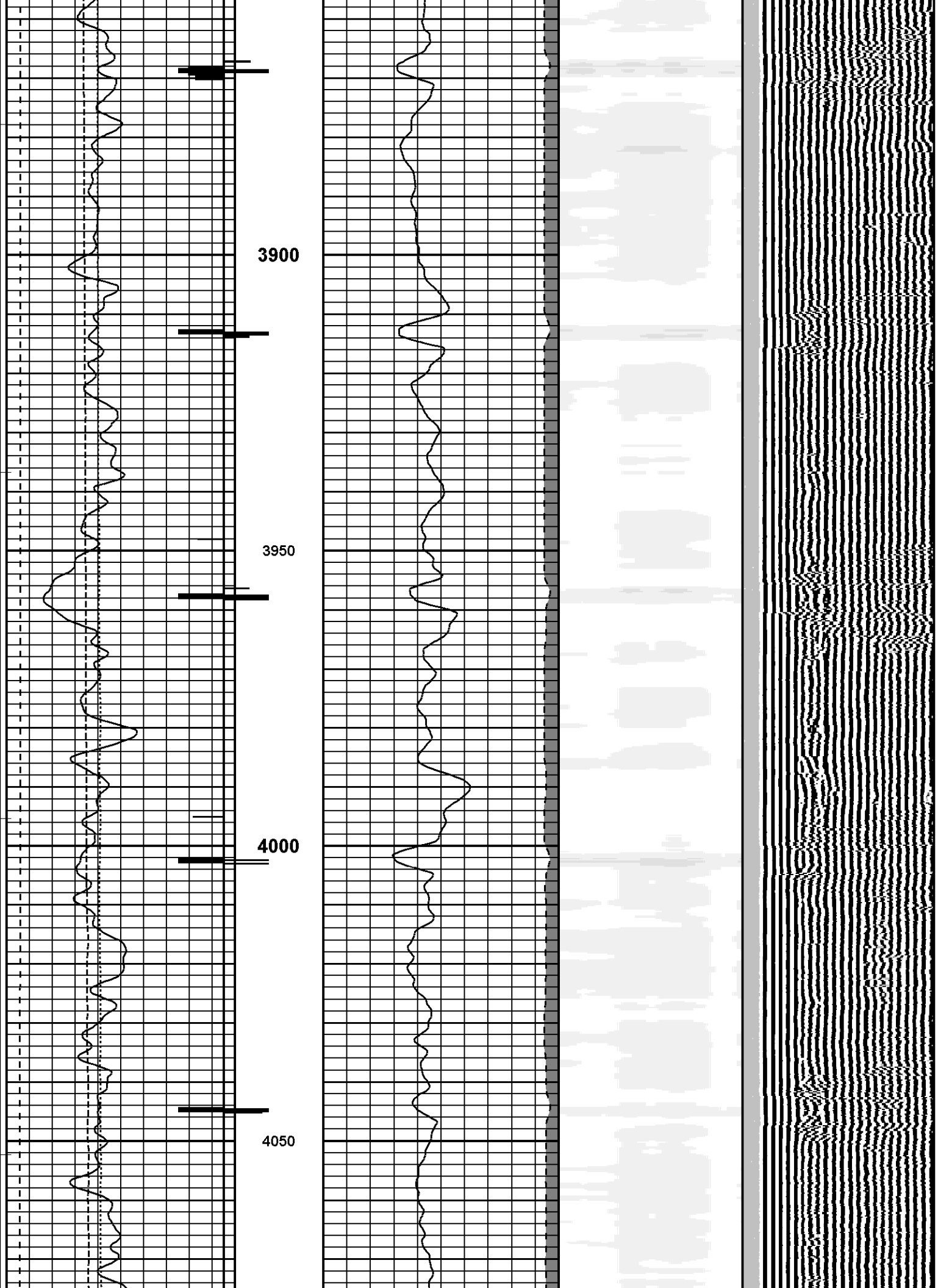
START: 5451.00ft

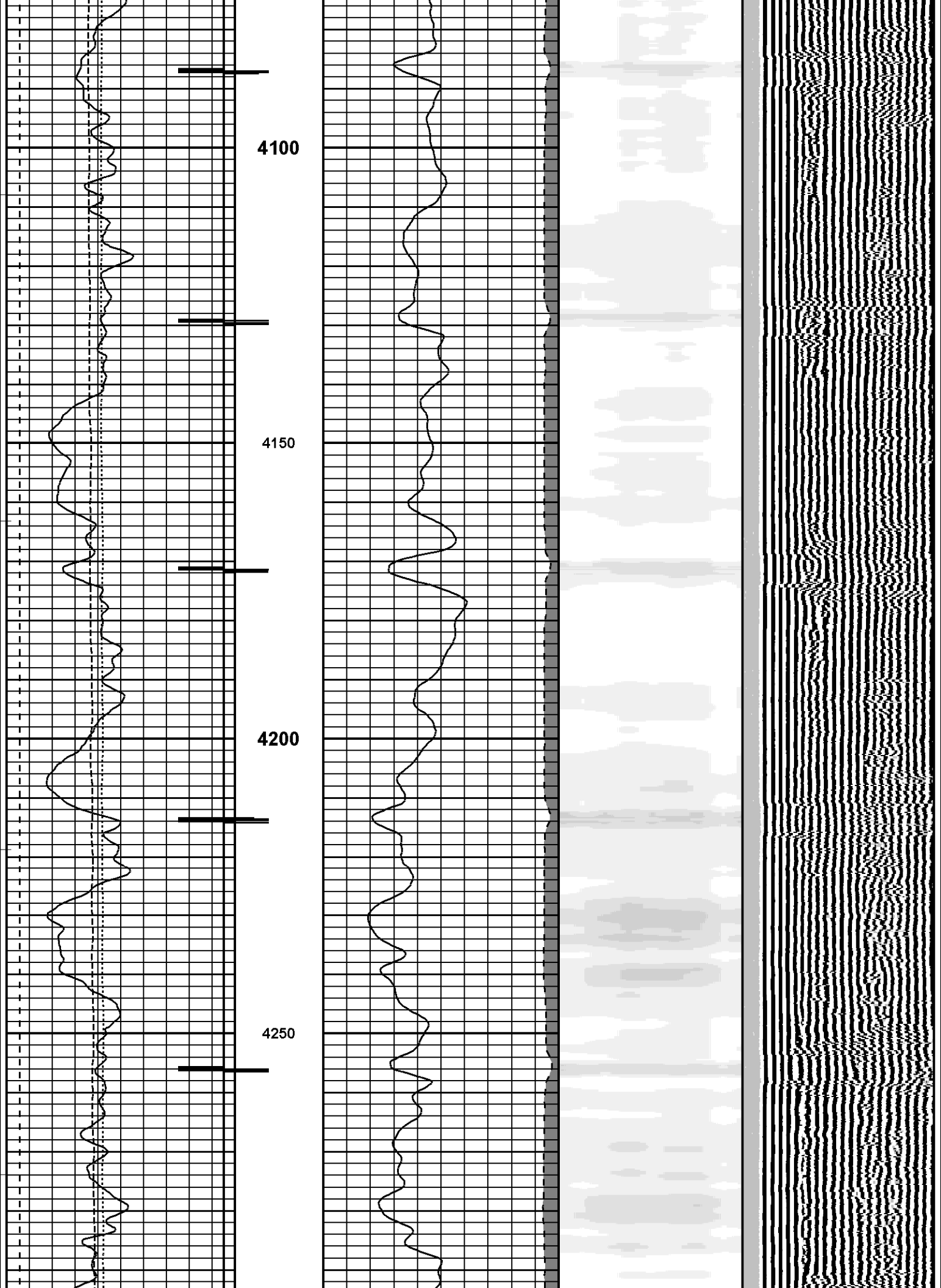
STOP: 3699.75ft

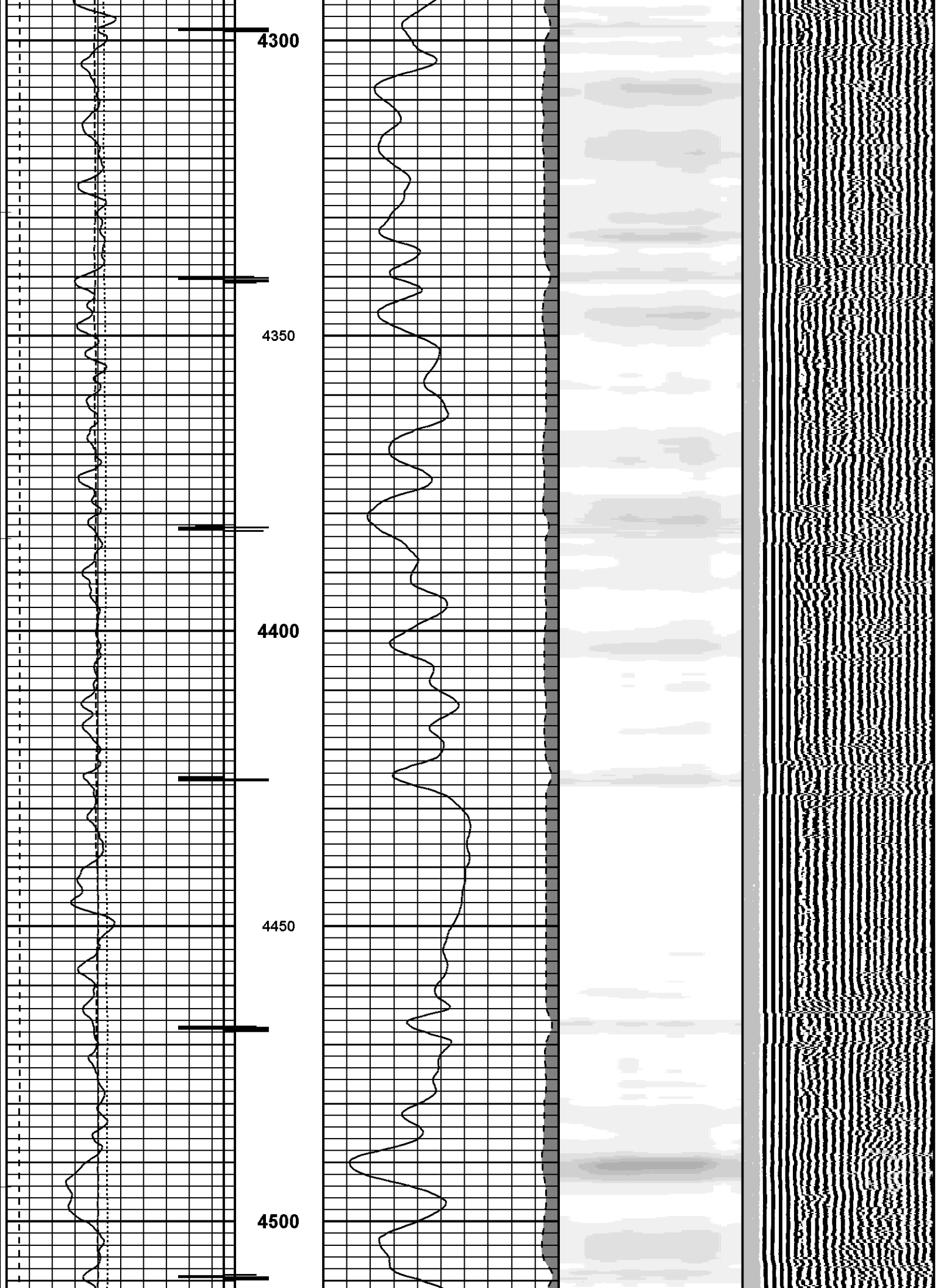
RES: 0.25ft

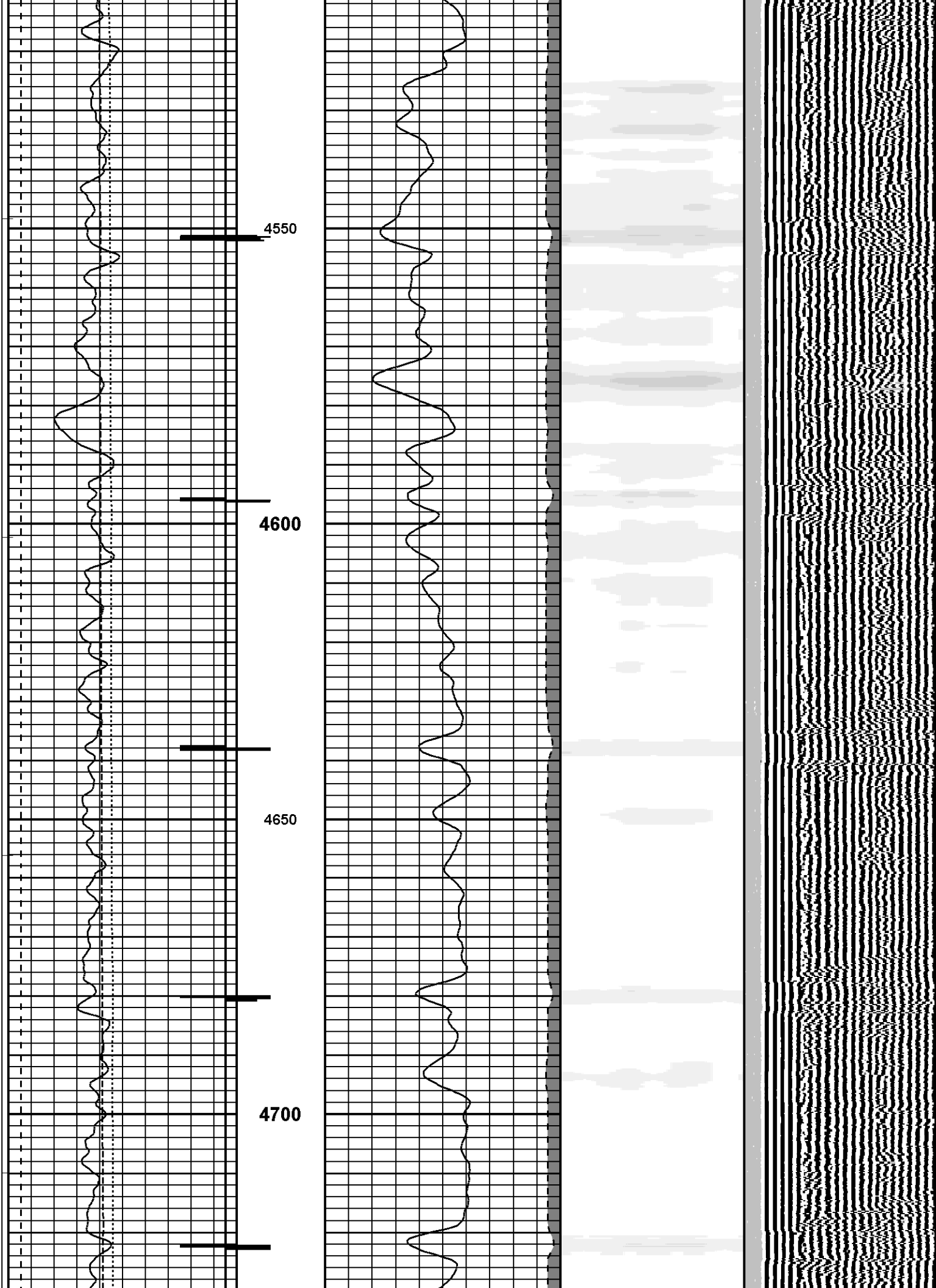
SCALE: 5"/100'

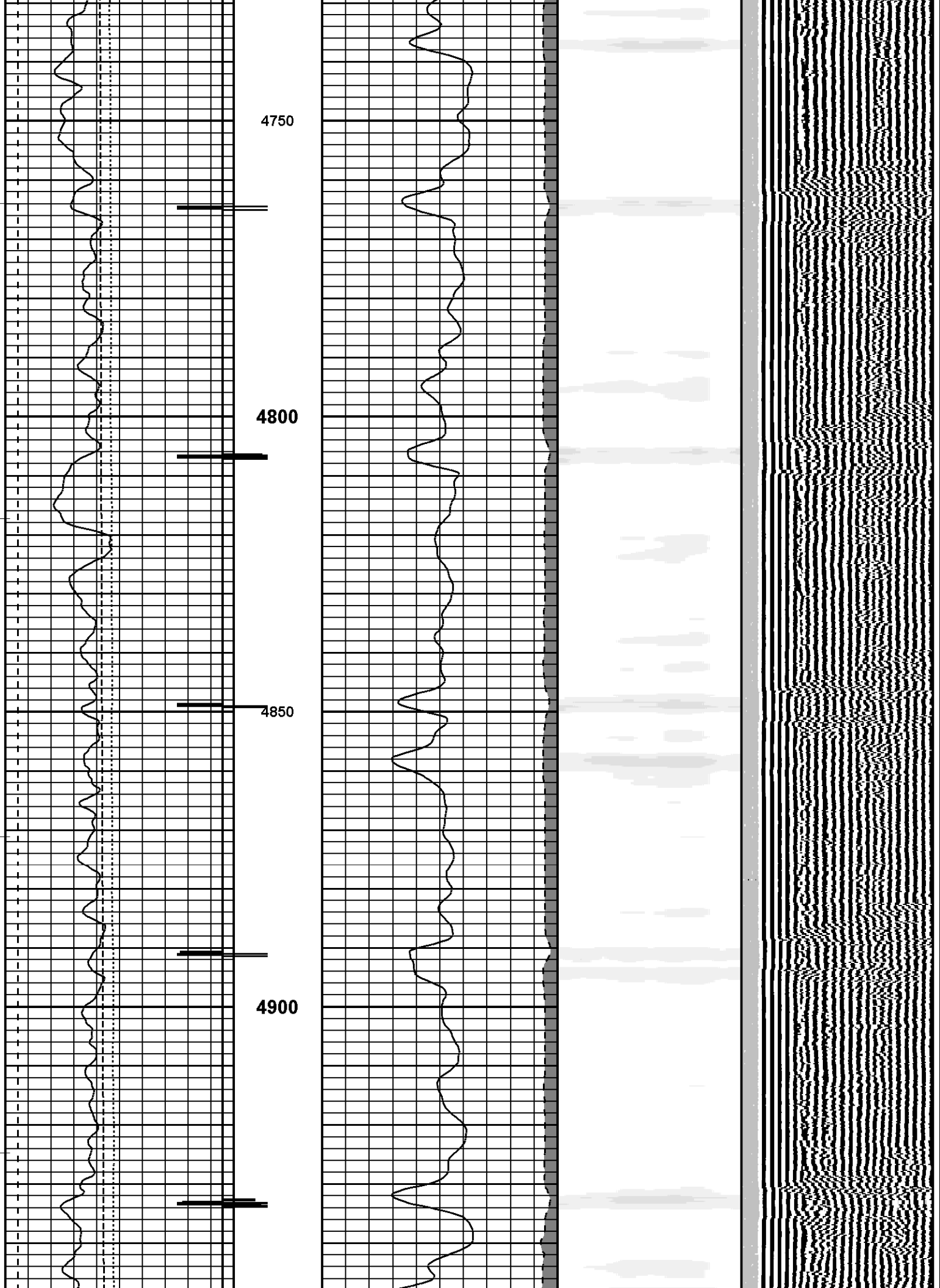












4950

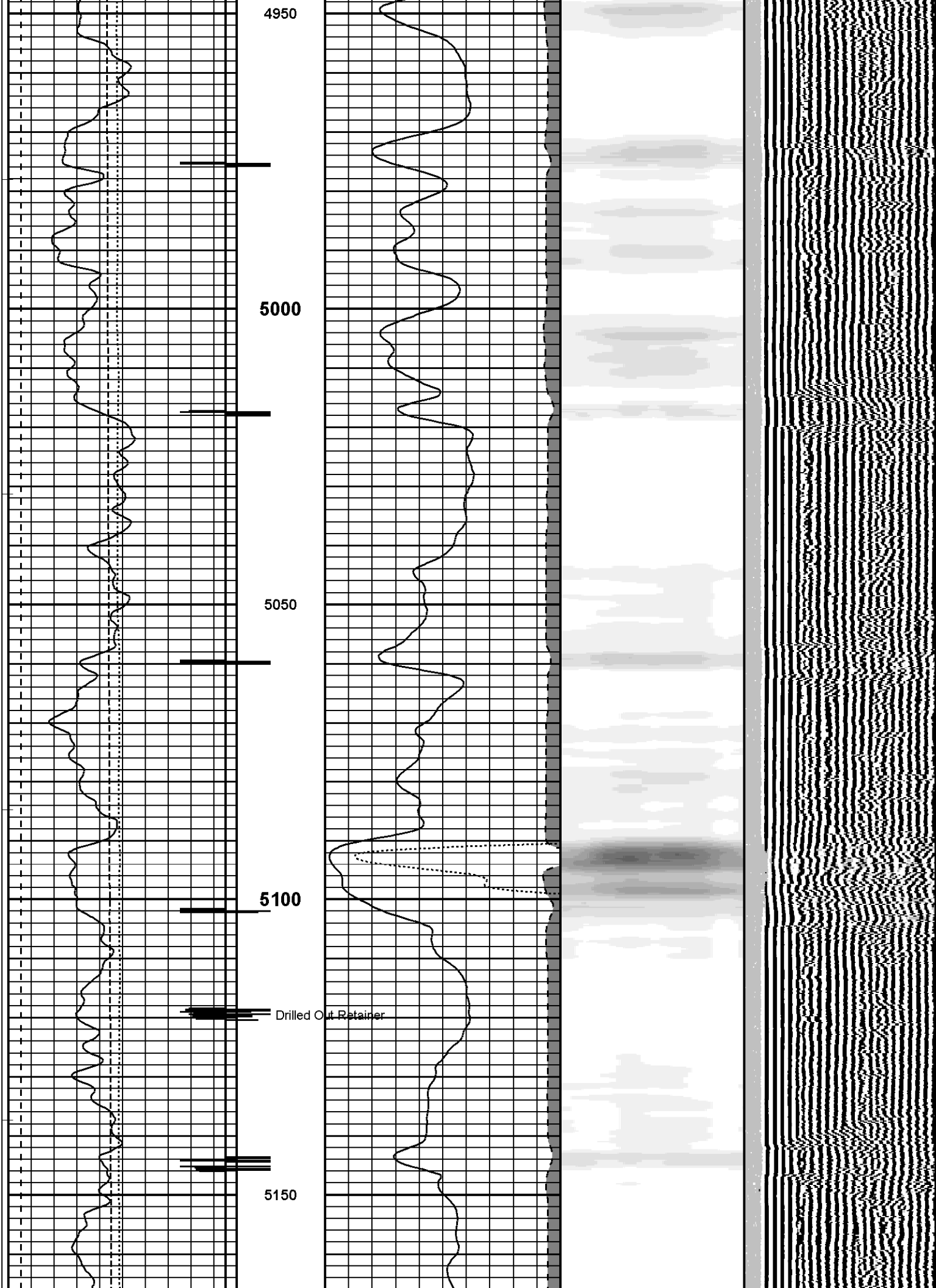
5000

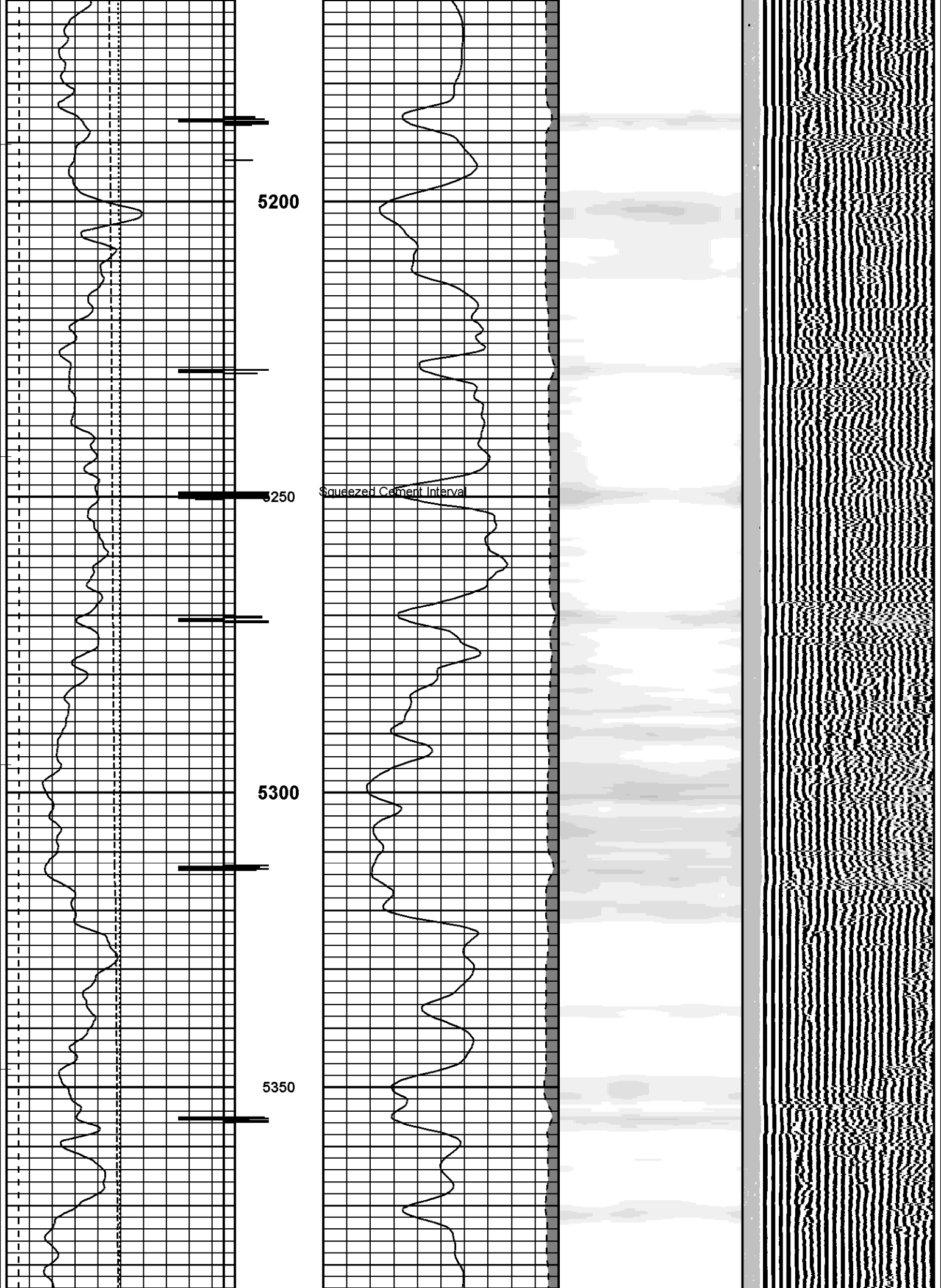
5050

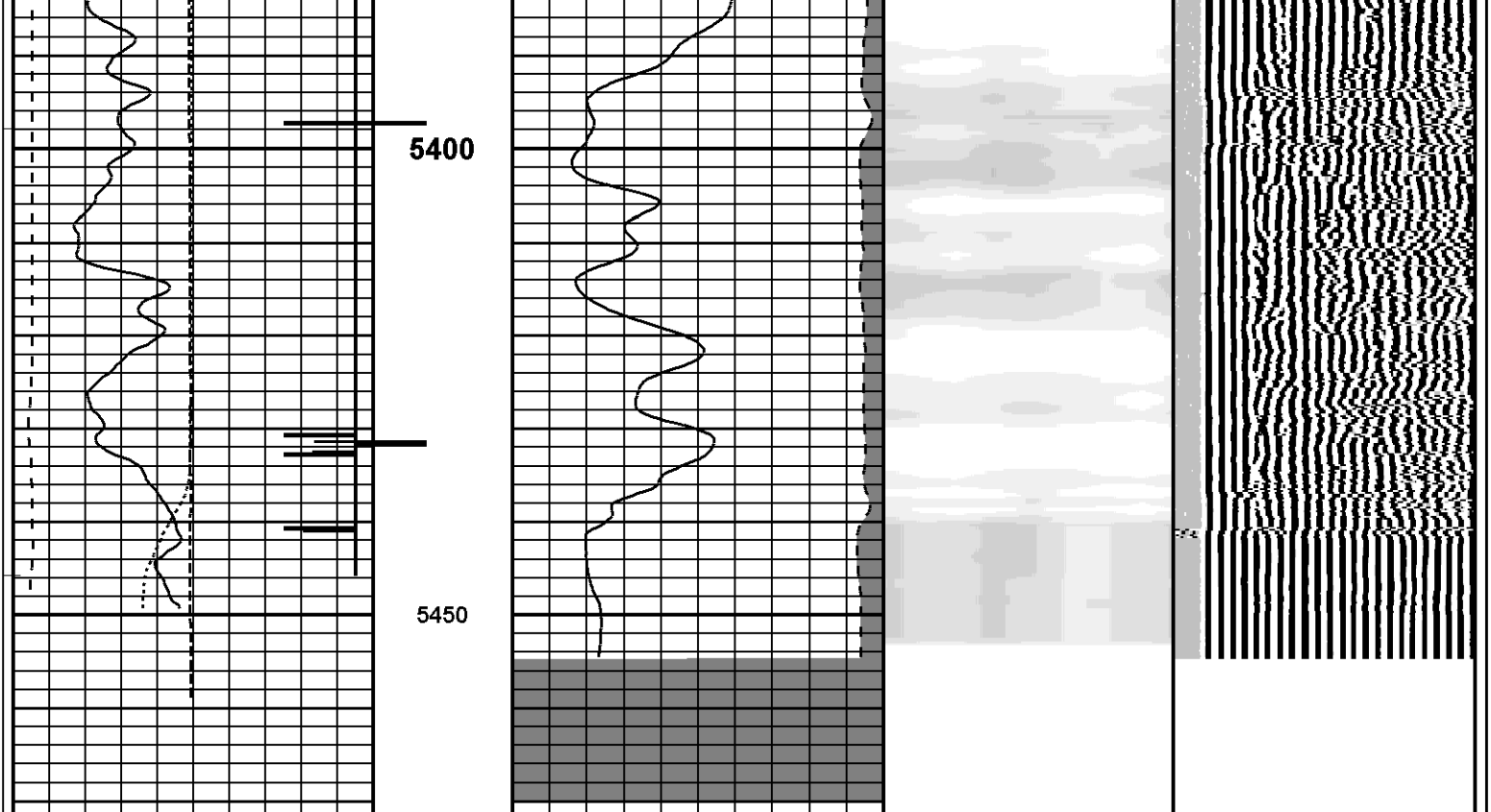
5100

5150

Drilled Out Retainer







CCL

0 APIU 150

0 Gamma Ray 2k lbs

0 LT 1000 ft/min

50 Line Speed 250 °F

Temperature

0 μSec 220

0 Time Of Arrival (TOA), Near 100 mV

0 Amplitude, Near 10 mV

0 Amplified Amplitude, Near

20db/ft 200 1200

Attenuation Map

VDL, Far

RUN: MAIN PASS

DIR: UP

DATE: 08/22/08

TIME: 14:07:21

MAIN PASS @ 0 PSI

START: 5451.00ft

STOP: 3699.75ft

RES: 0.25ft

SCALE: 5"/100'

RUN: MAIN PASS @ 1000 PSI

DIR: UP

DATE: 08/22/08

Time Mark [00.0s]

MAIN PASS @ 1000 PSI

START: 5452.00ft

STOP: 3644.00ft

RES: 0.25ft

SCALE: 5"/100'

50 °F 250

Temperature

0 ft/min 1000

Line Speed

0 lbs 2k

LT

0 APIU 150

Gamma Ray

CCL

0 mV 10

0 Amplified Amplitude, Near 100 mV

0 Amplitude, Near 220 μSec

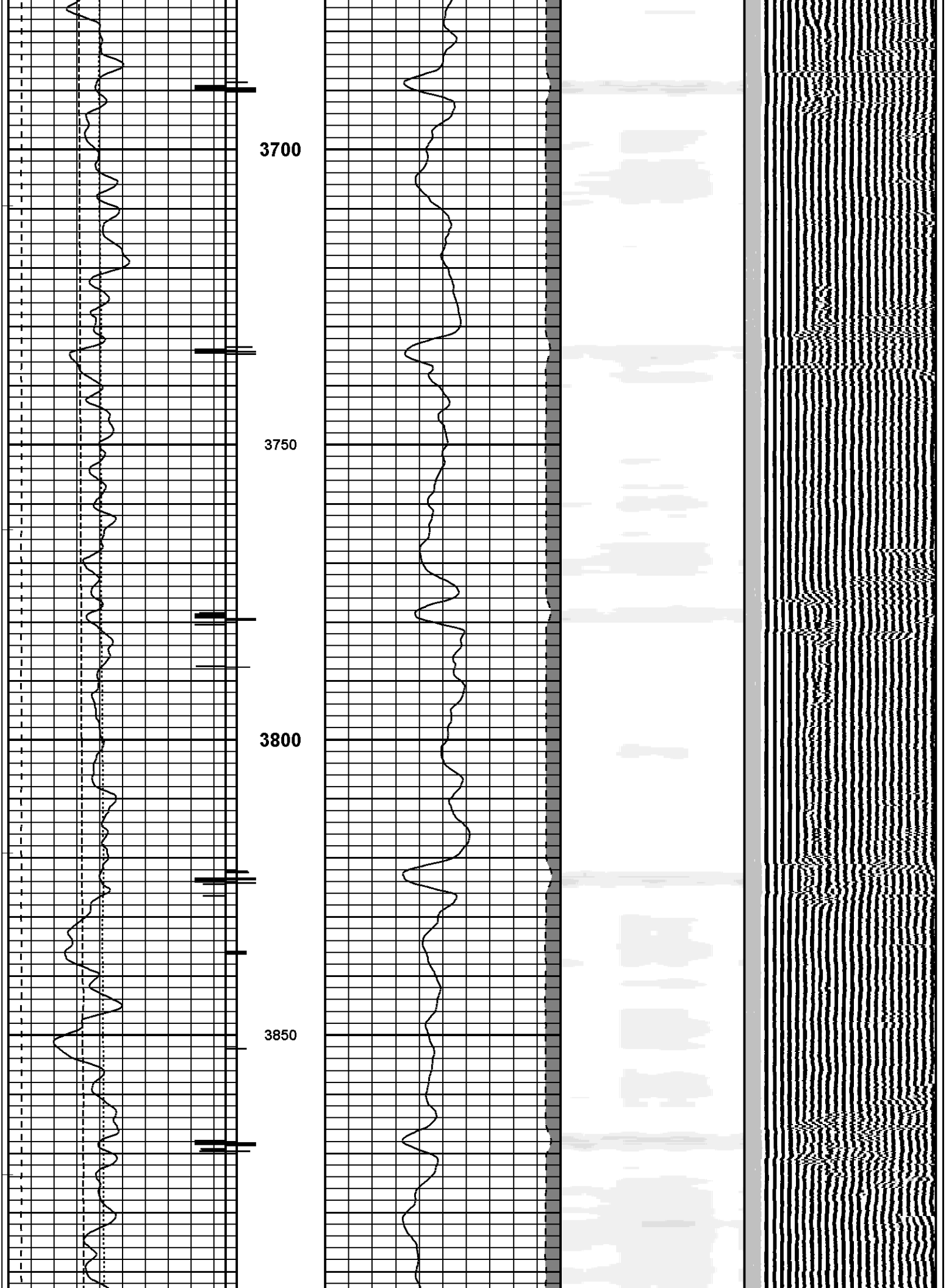
0 Time Of Arrival (TOA), Near

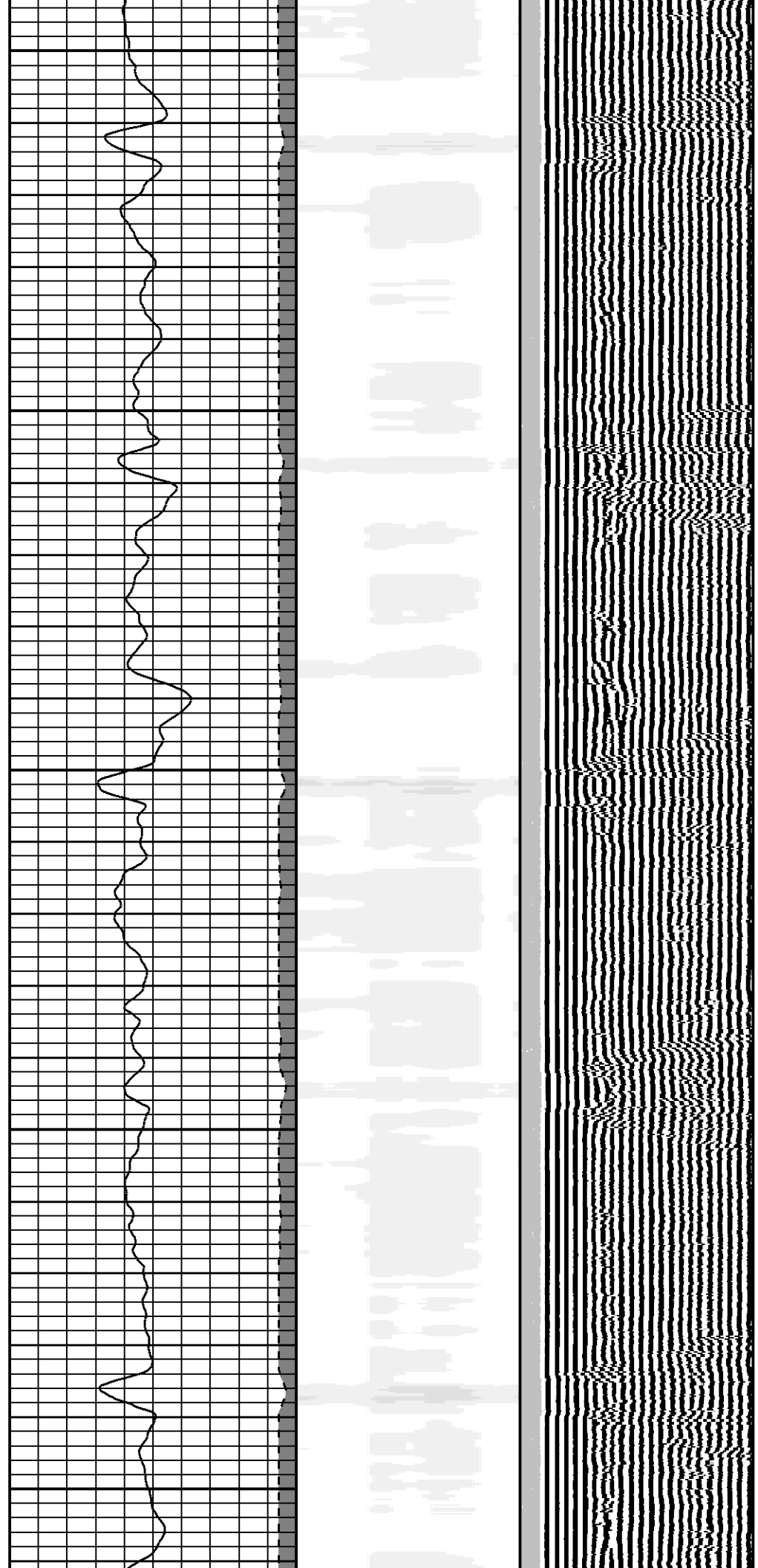
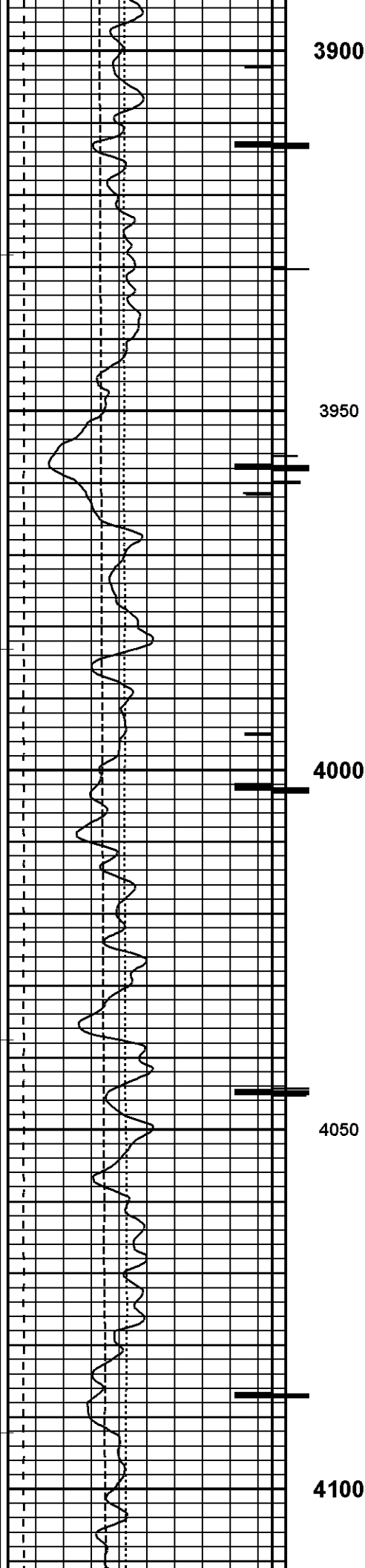
20db/ft 200 1200

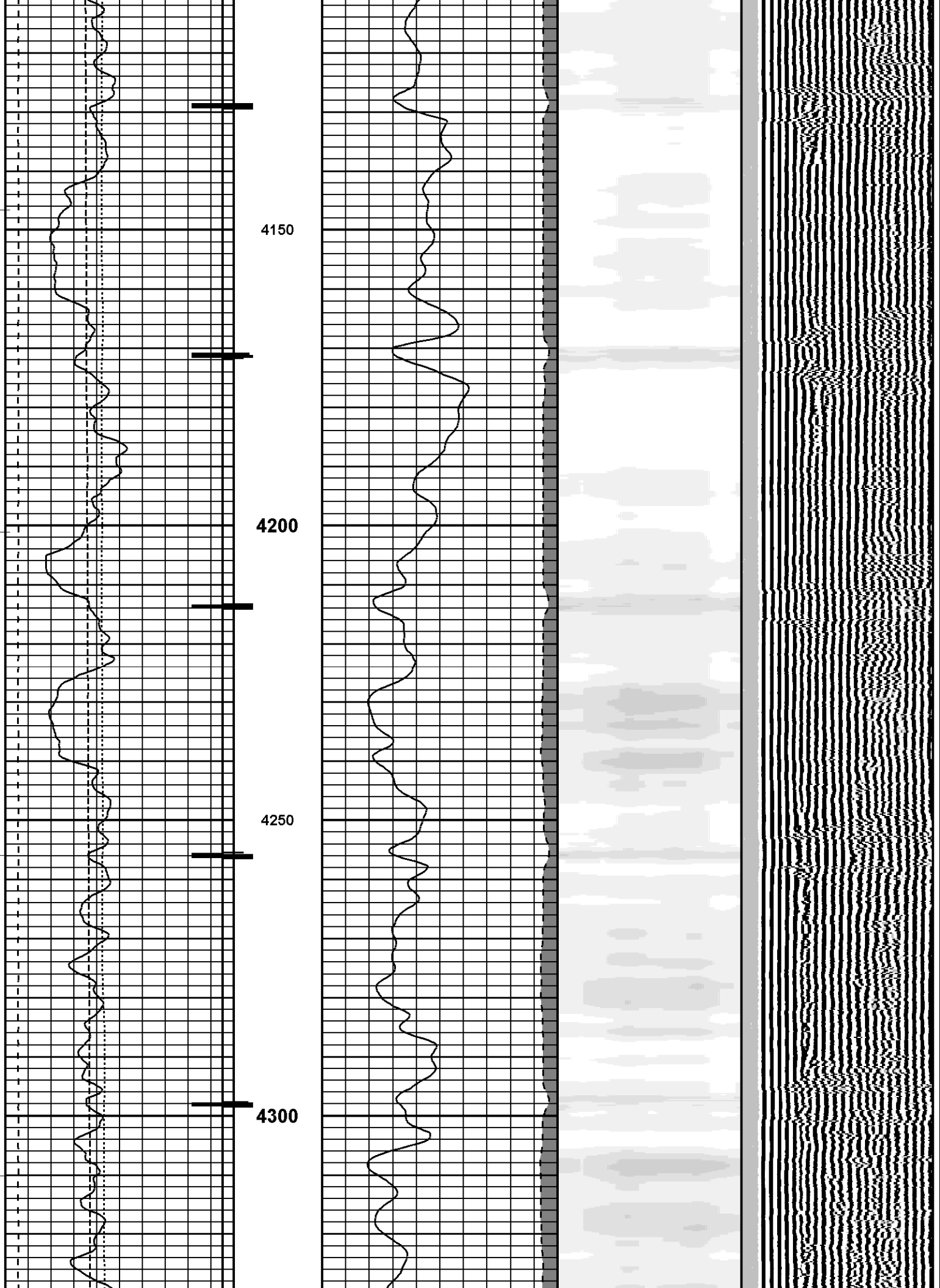
Attenuation Map

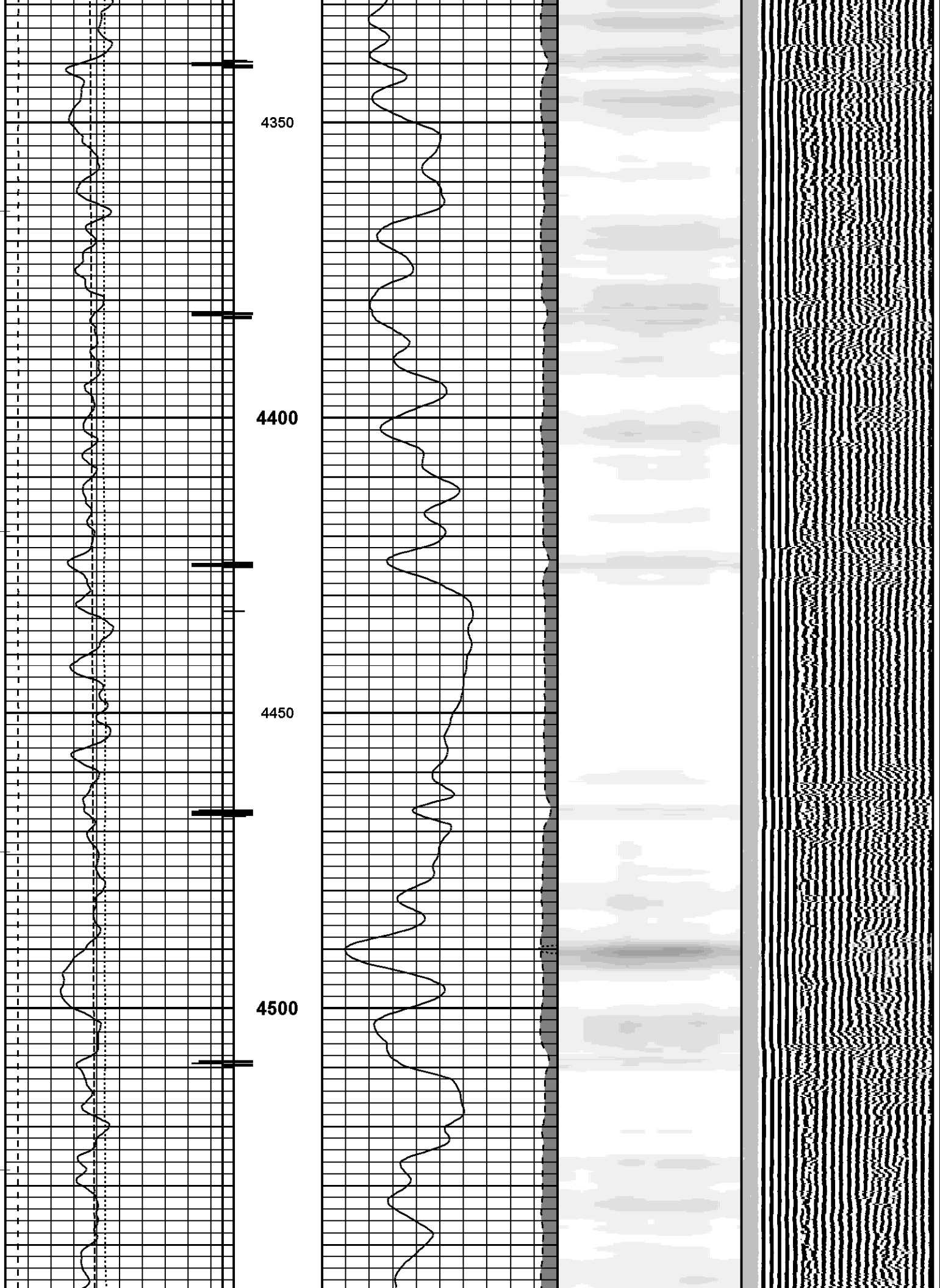
VDL, Far

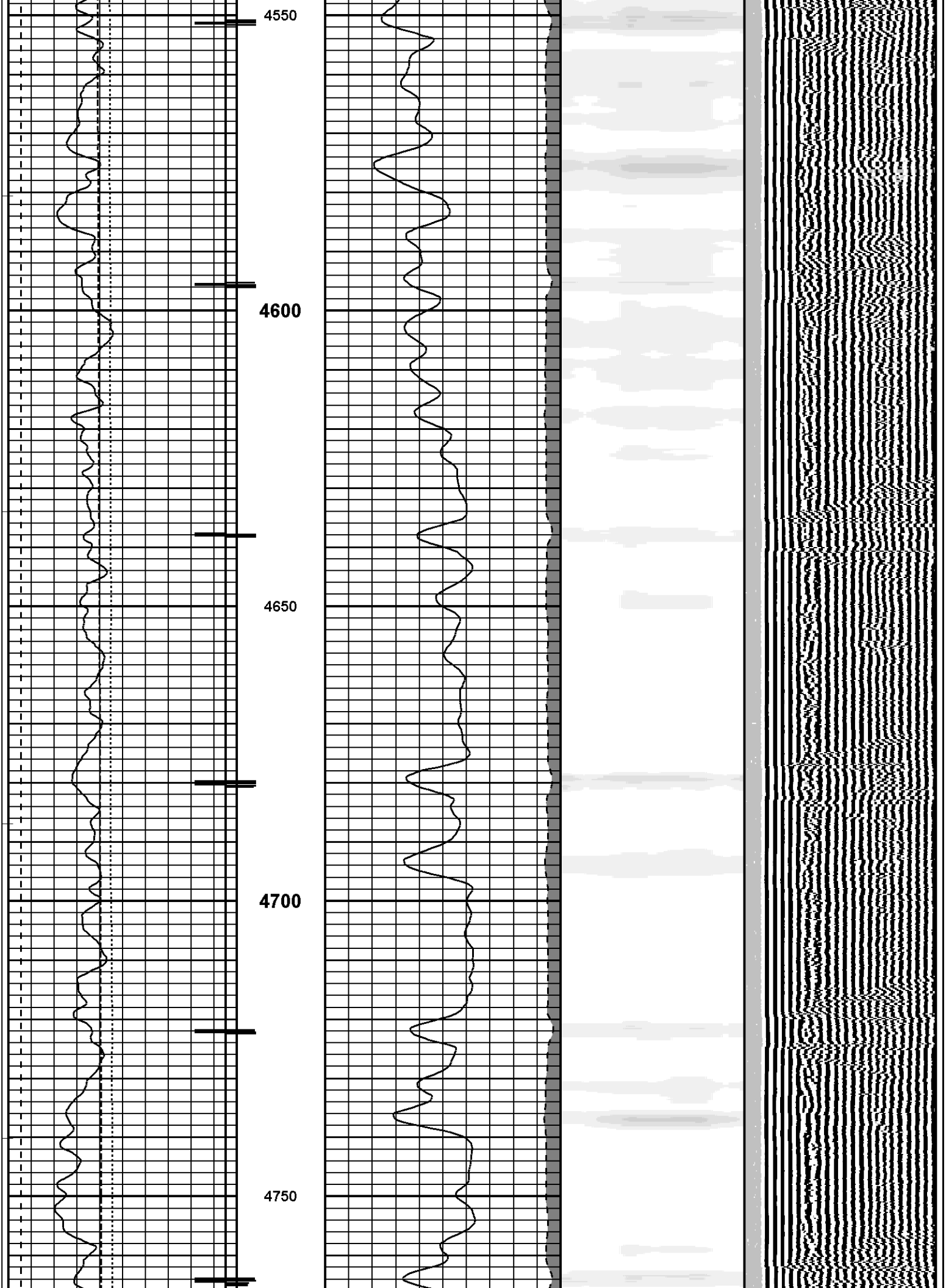


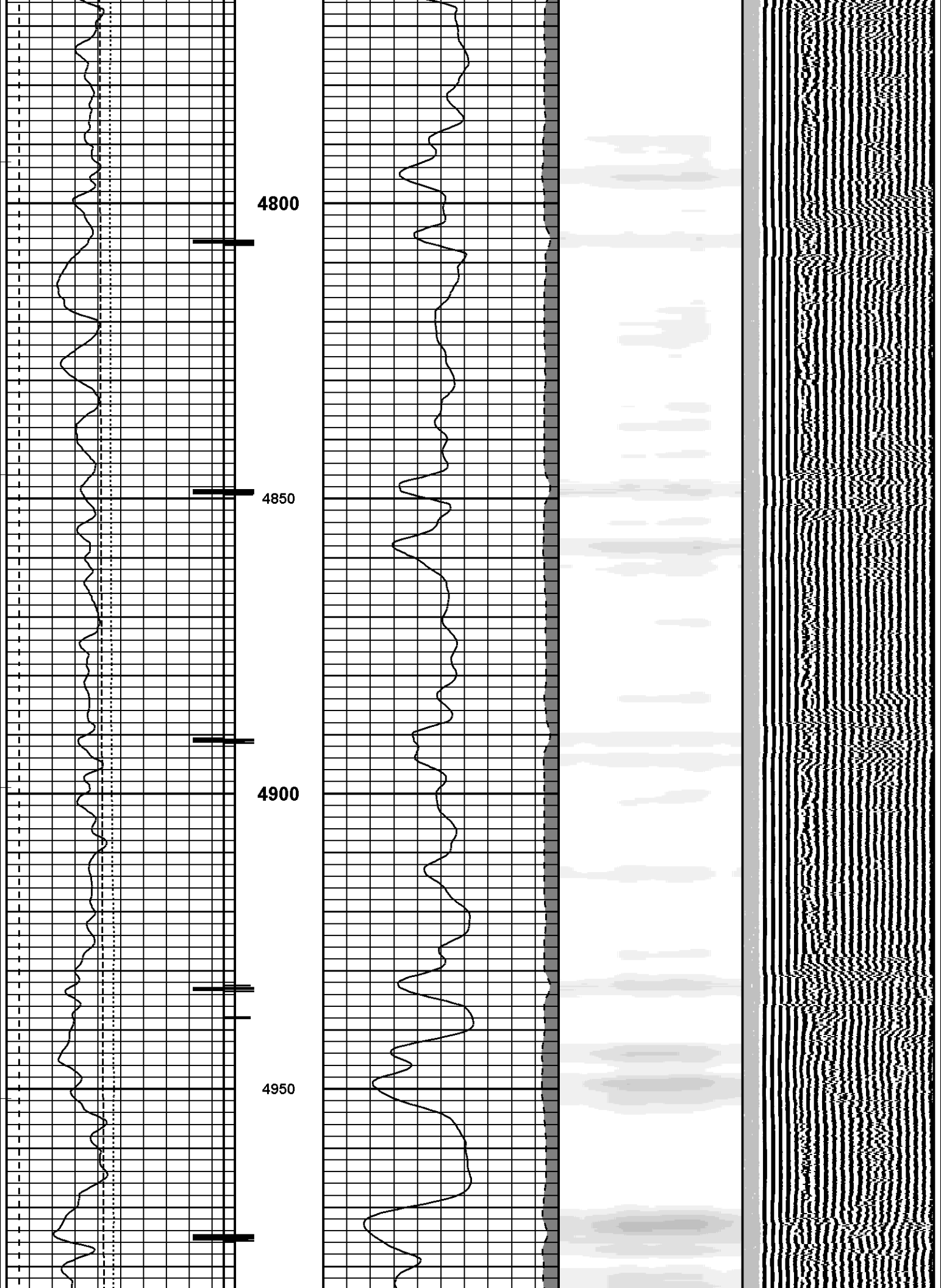


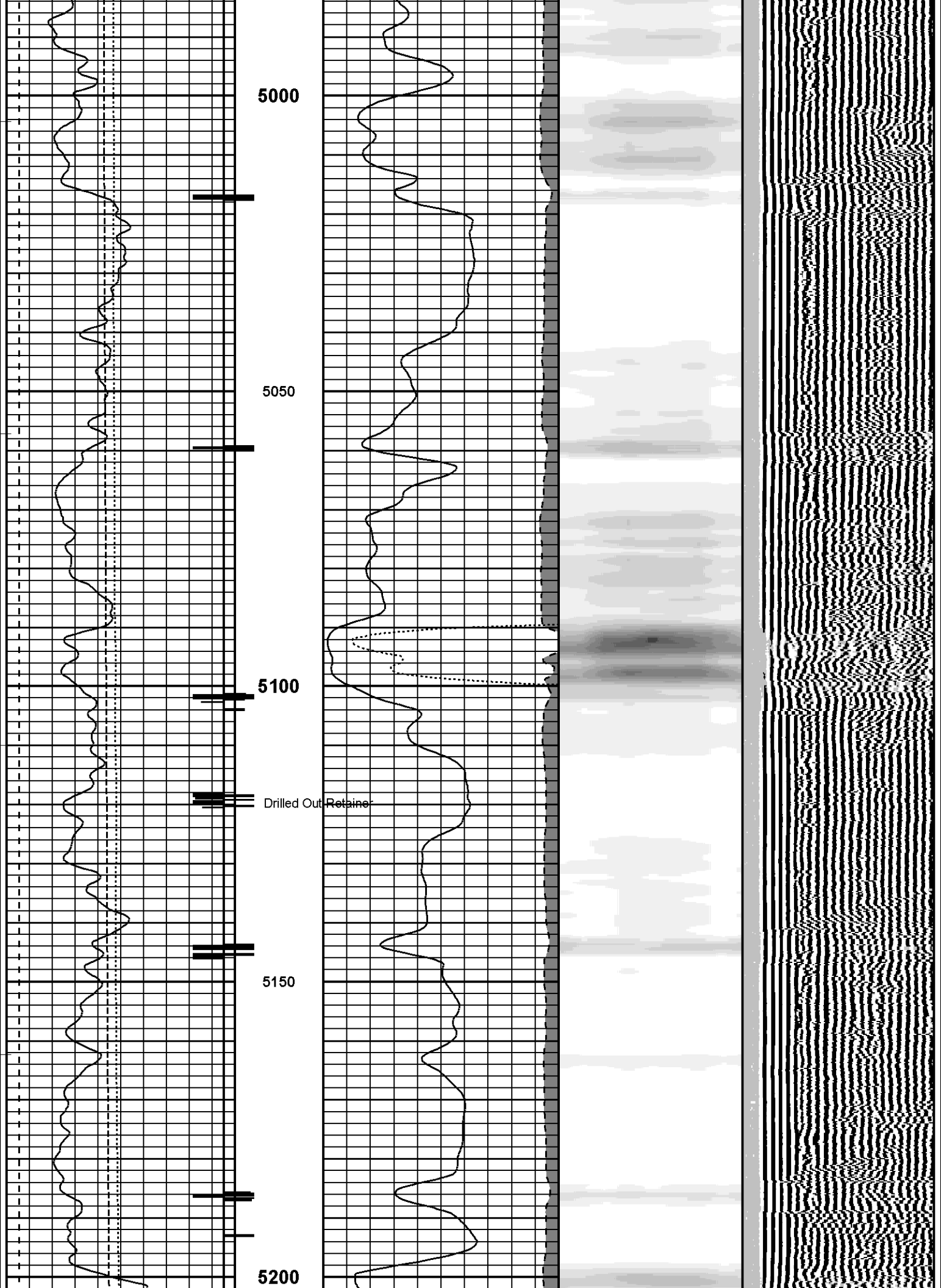


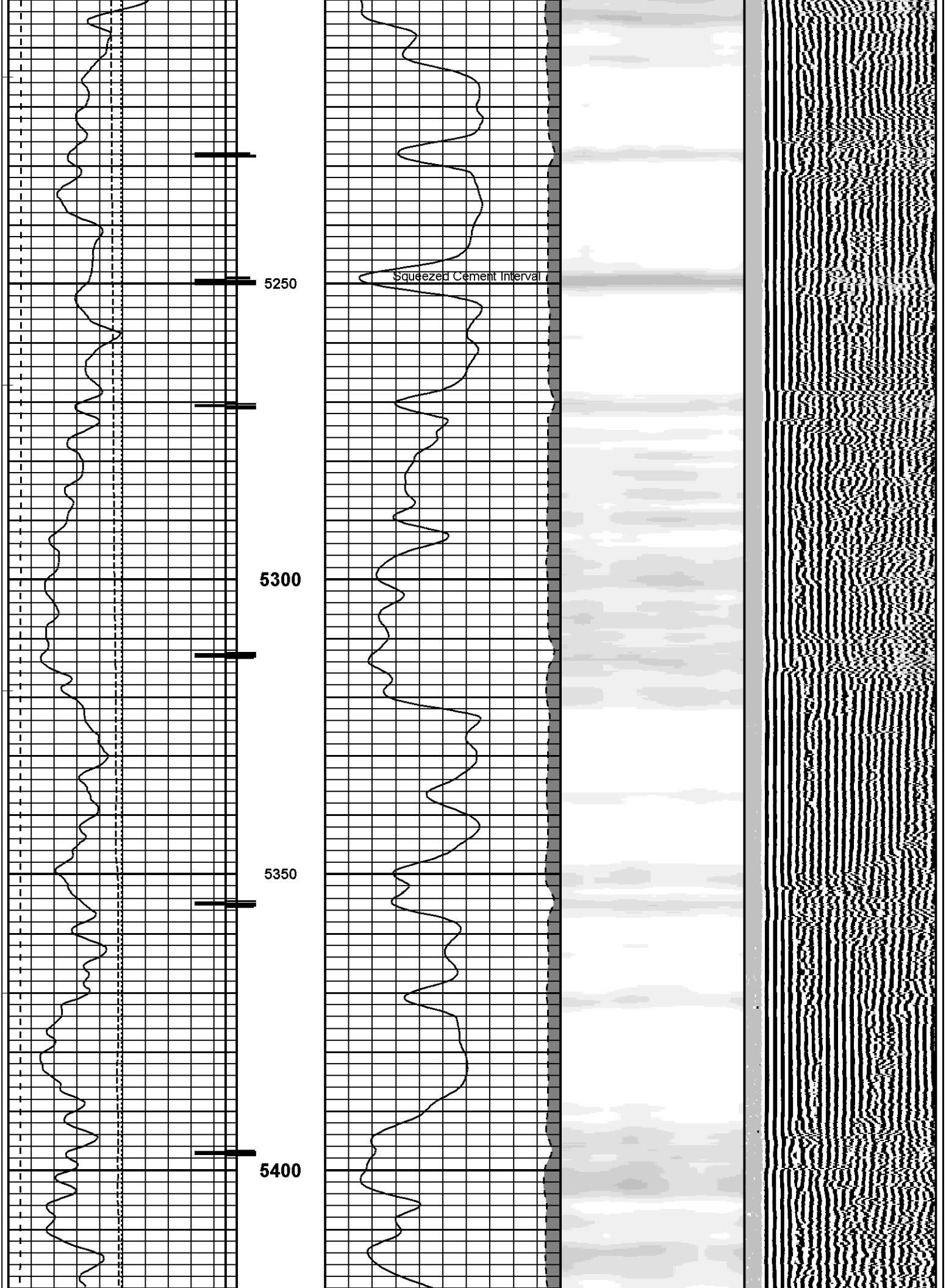


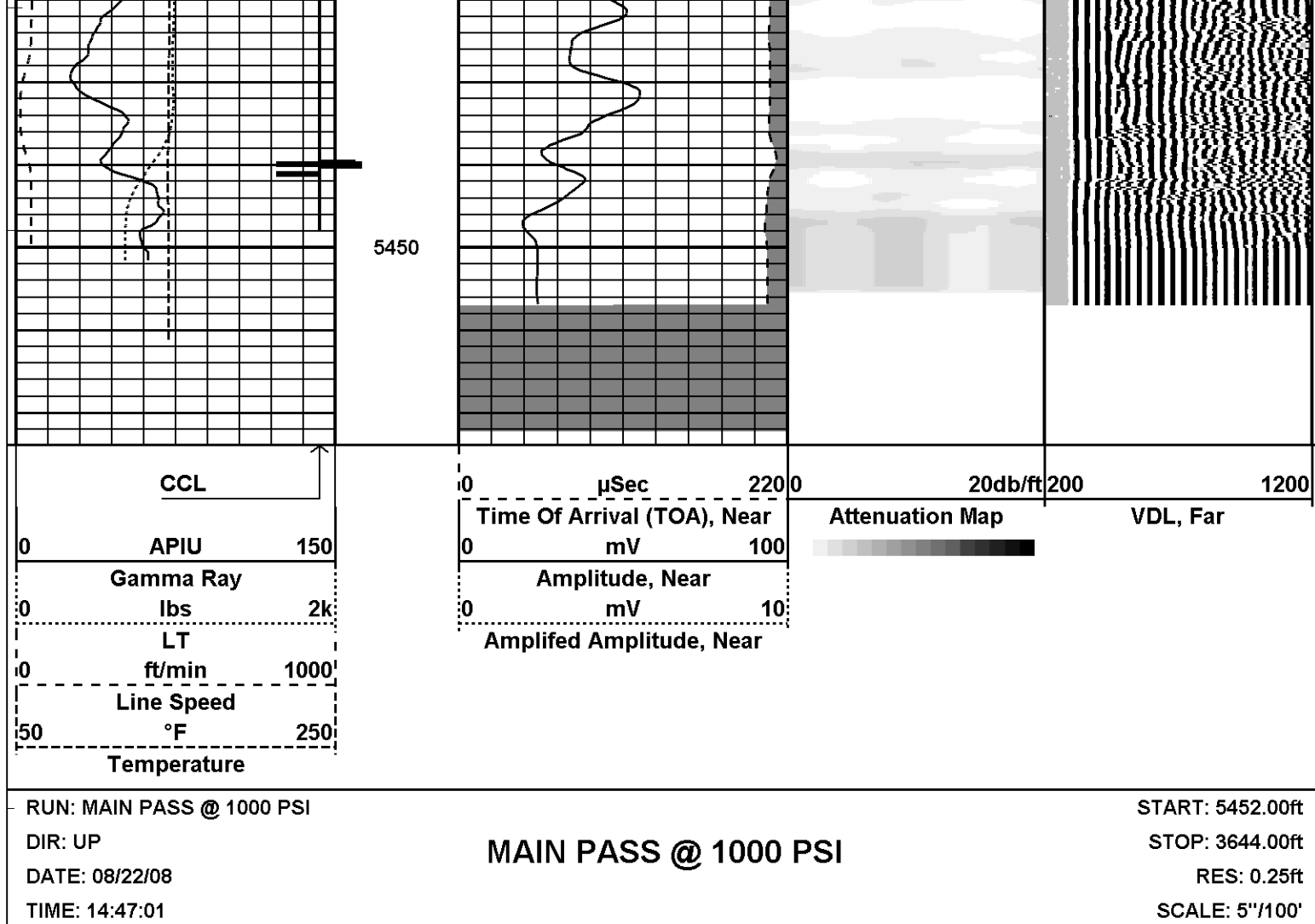




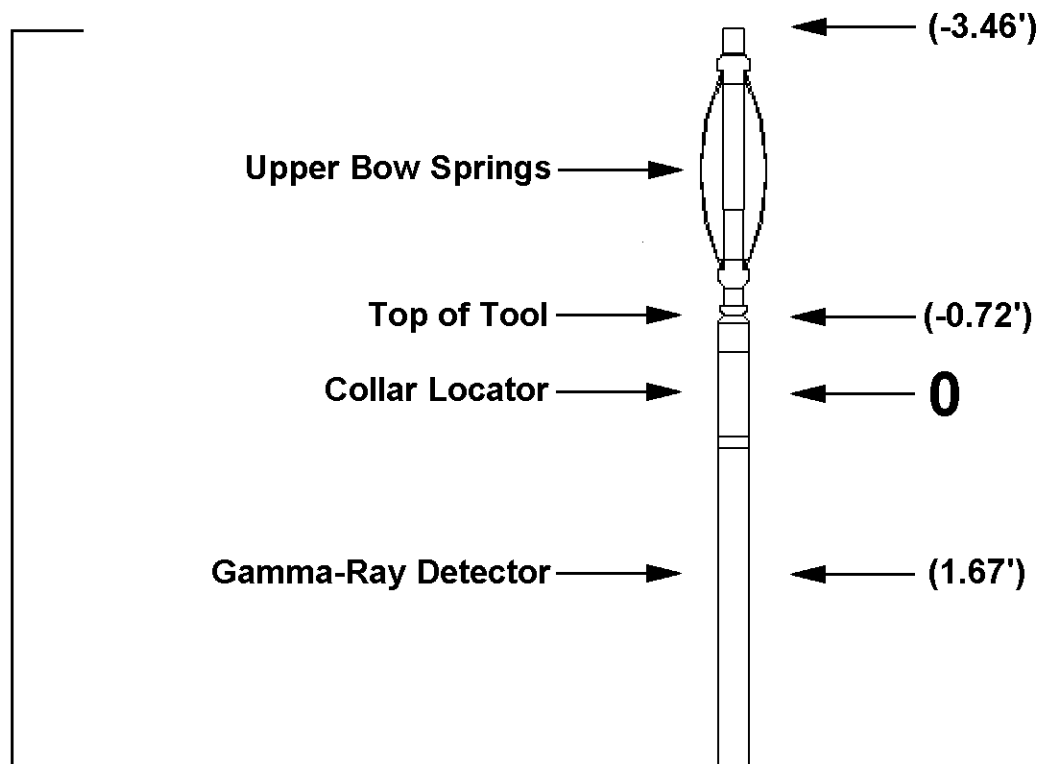


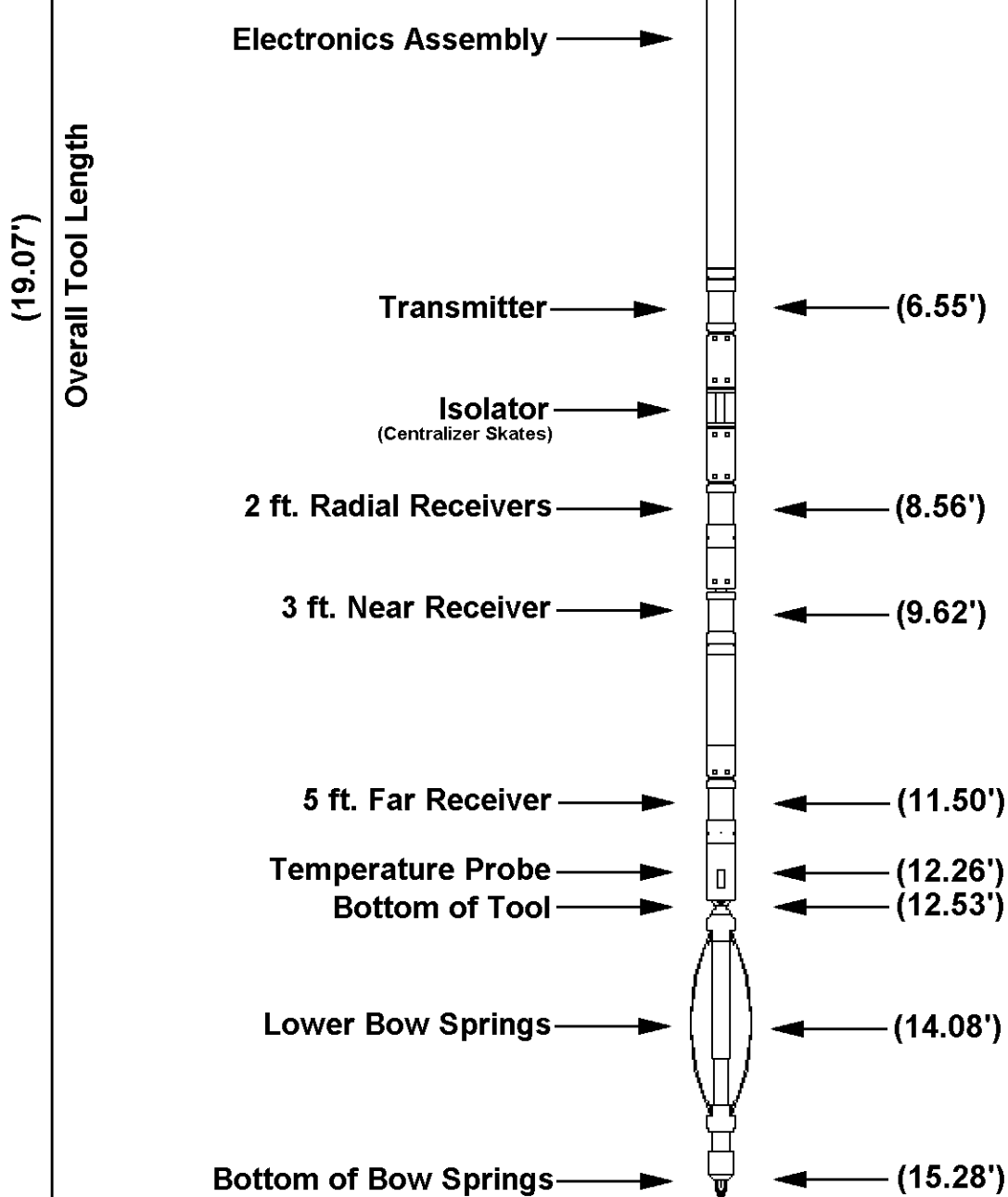






Sondex 3.125" O.D. Multiplex Radial Bond Tool





COMPANY: ENCANA OIL & GAS (USA)

WELL: HMU 1-11C (I2SW)

FIELD: MAMM CREEK

COUNTY: GARFIELD

STATE: COLORADO