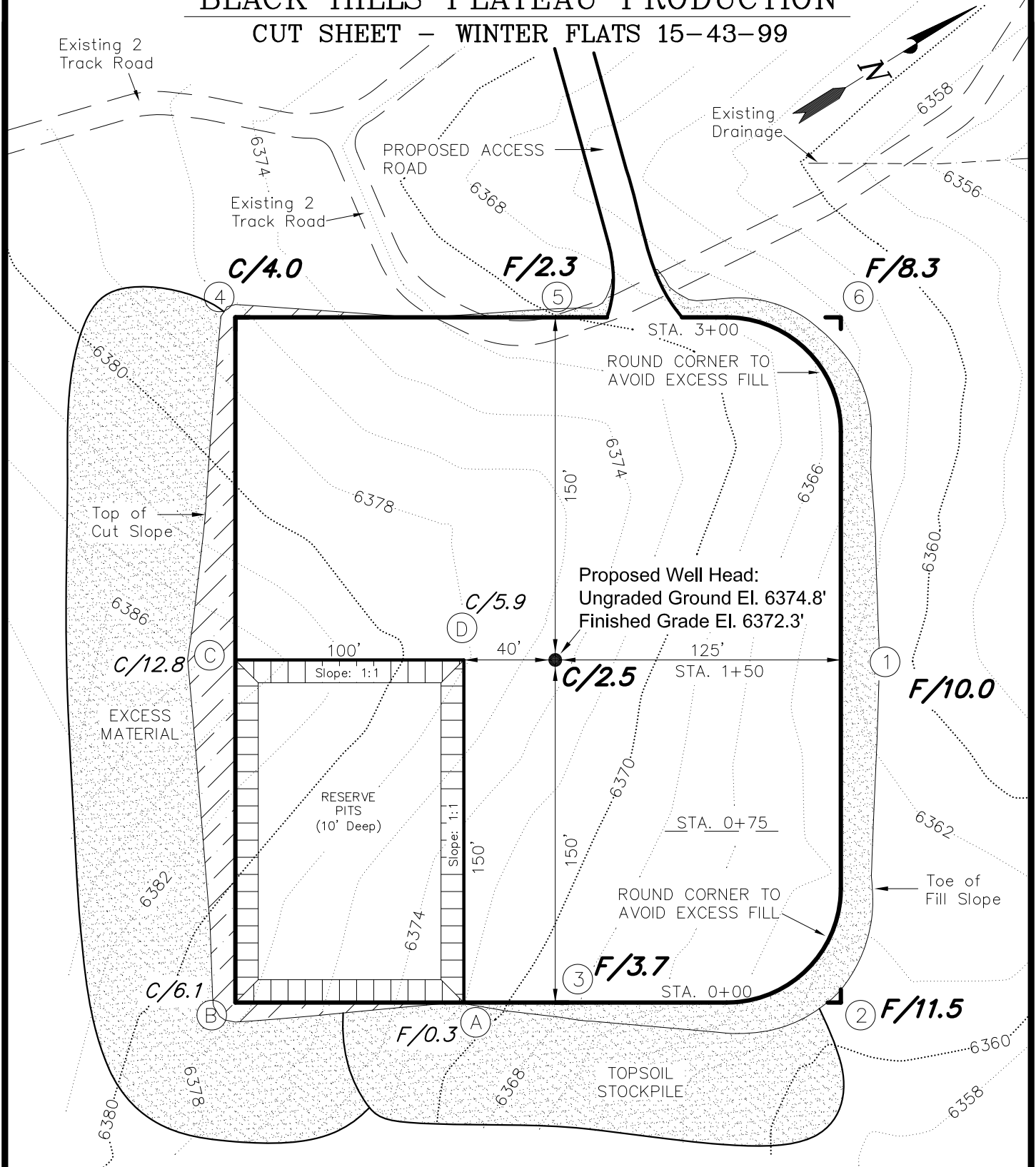


BLACK HILLS PLATEAU PRODUCTION

CUT SHEET - WINTER FLATS 15-43-99

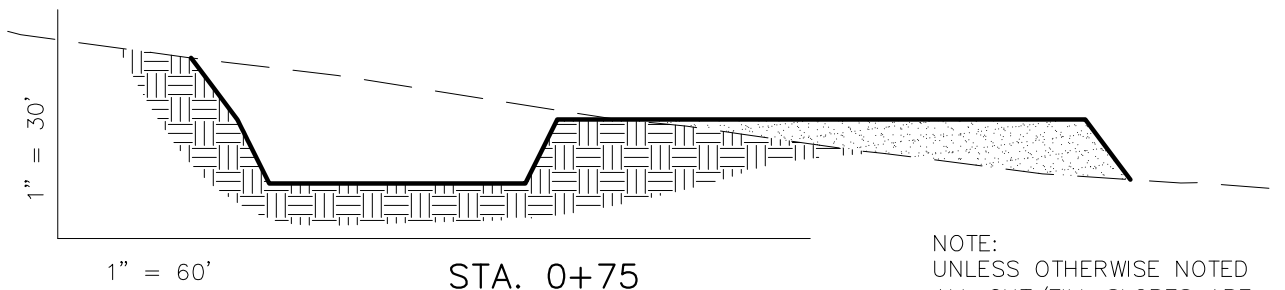
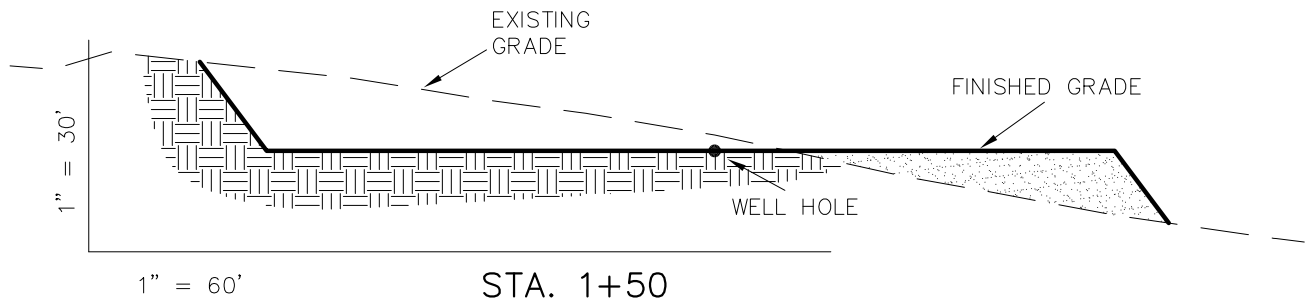
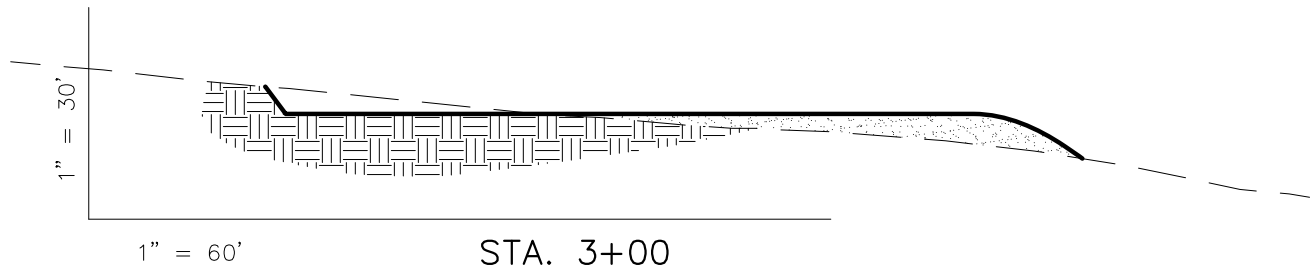


CONTOUR INTERVAL = 2'

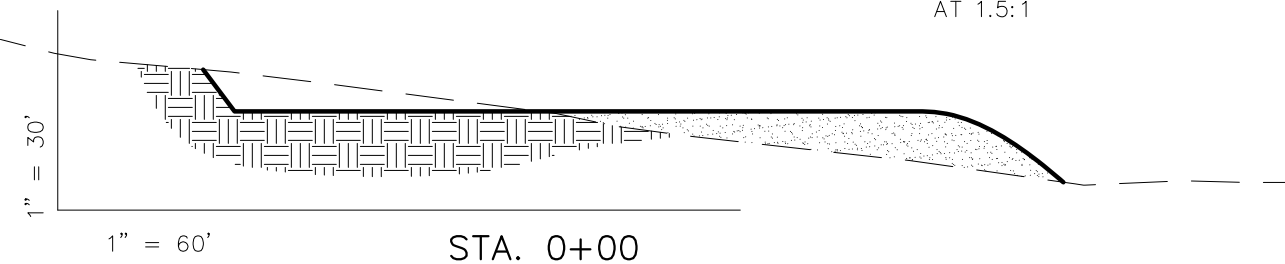
Section 15, T9S, R99W, 6th P.M.		Qtr/Qtr Location: NE SE	Footage Location: 1693' FSL & 1171' FEL
Date Surveyed: 04-03-09	Date Drawn: 04-07-09	Date Last Revision:	Timberline (435) 789-1365
Surveyed By: B.J.S.	Drawn By: M.W.W.	Scale: 1" = 60'	Engineering & Land Surveying, Inc. 209 NORTH 300 WEST VERNAL, UTAH 84078
			SHEET 3 OF 11

BLACK HILLS PLATEAU PRODUCTION

CROSS SECTIONS – WINTER FLATS 15-43-99



NOTE:
UNLESS OTHERWISE NOTED
ALL CUT/FILL SLOPES ARE
AT 1.5:1



REFERENCE POINTS

200' NORTHWESTERLY = 6366.7'
250' NORTHWESTERLY = 6368.5'
175' NORTHEASTERLY = 6358.6'
225' NORTHEASTERLY = 6355.6'

ESTIMATED EARTHWORK QUANTITIES (No shrink or swell adjustments have been used) (Expressed in Cubic Yards)

CUT	Excess Material	= 6,140
6" Topsoil Stripping = 1,470	Topsoil & Pit Backfill = 6,140	
Remaining Location = 12,100	(Full Pit Volume)	
TOTAL CUT = 13,570	Excess Unbalance	= 0
FILL = 7,430	(After Rehabilitation)	

Section 15, T9S, R99W, 6th P.M.		Qtr/Qtr Location: NE SE	Footage Location: 1693' FSL & 1171' FEL
Date Surveyed: 04-03-09	Date Drawn: 04-07-09	Date Last Revision:	Timberline (435) 789-1365
Surveyed By: B.J.S.	Drawn By: M.W.W.	Scale: 1" = 60'	Engineering & Land Surveying, Inc. 209 NORTH 300 WEST VERNAL, UTAH 84078
			SHEET 4 OF 11