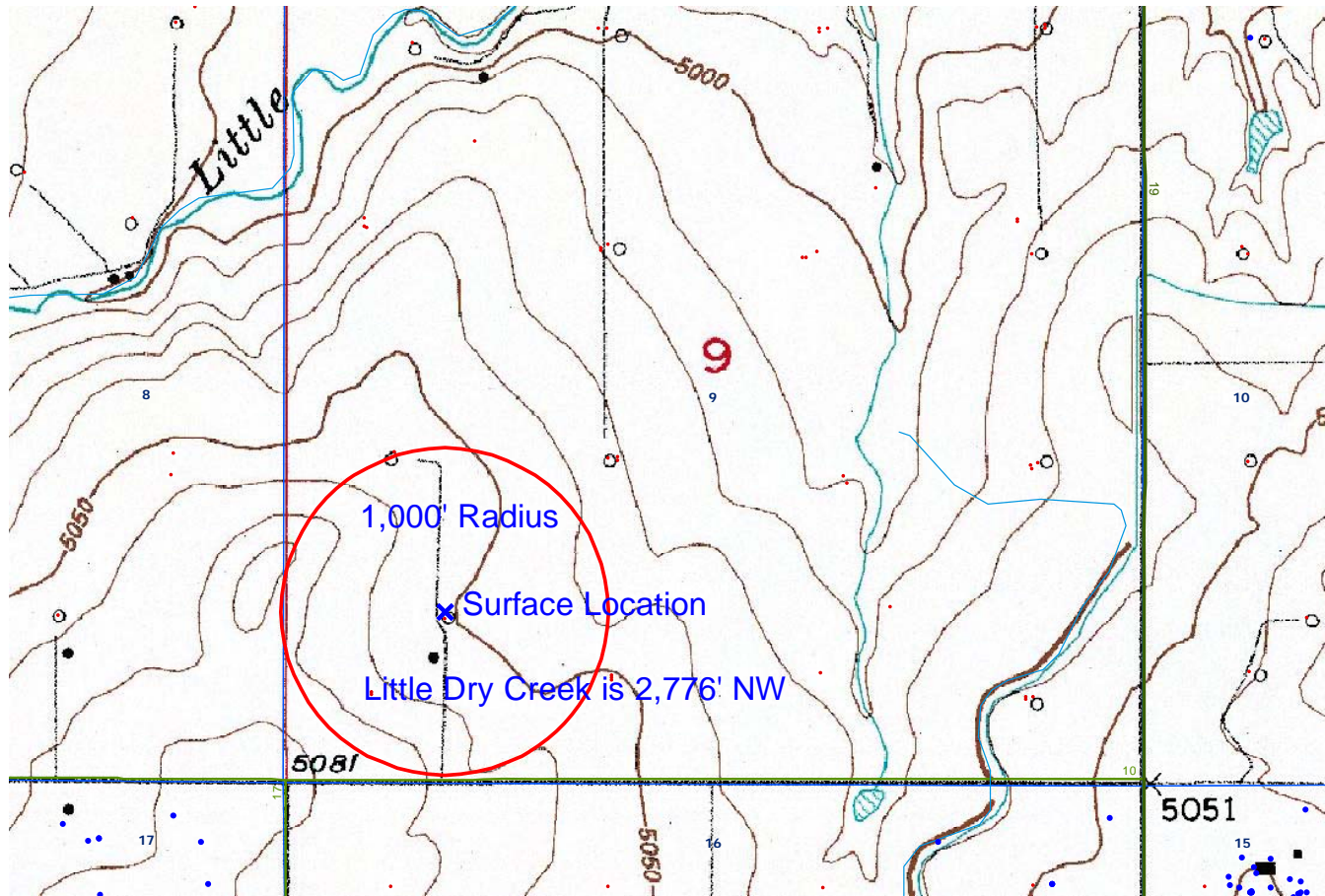


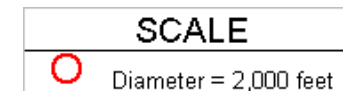
**NRC 14-9**

**TOPO**

**HYDROLOGY MAP-A**



TOWNSHIP 1 NORTH, RANGE 67 WEST



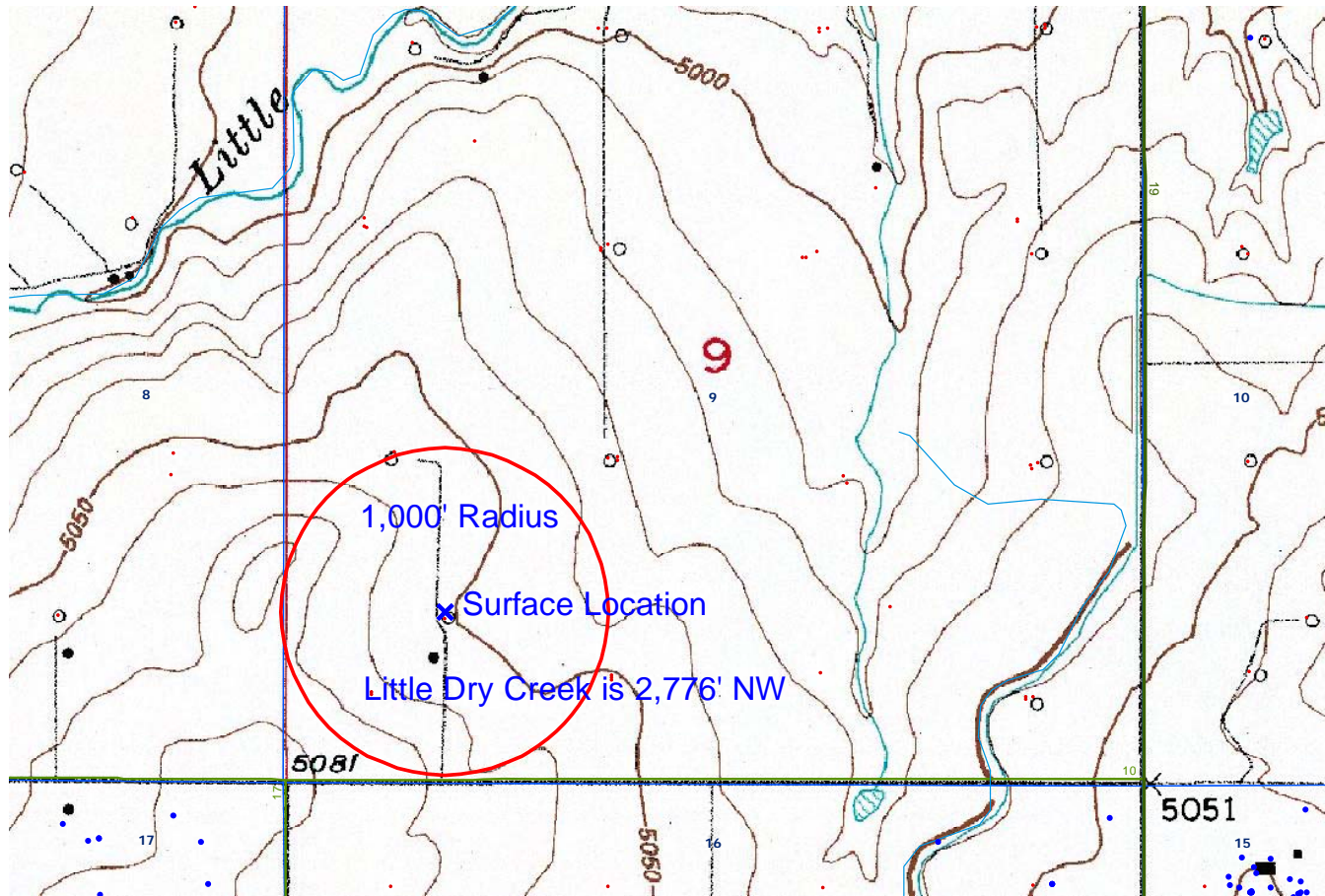
LEGEND A
WATER RESOURCES
● Water Wells
□ Lakes
— Major Rivers
— Streams
■ 300-Foot Stream Buffers

LEGEND B
1200-SEARIES WILDLIFE AREAS
■ RSO Areas
■ RSO_Osprey_Curren
■ SWH Areas
■ State Wildlife Areas

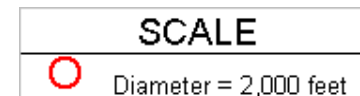
**NRC 14-9**

**TOPO**

**HYDROLOGY MAP-B**



TOWNSHIP 1 NORTH, RANGE 67 WEST



LEGEND A
WATER RESOURCES
• Water Wells
□ Lakes
— Major Rivers
— Streams
□ 300-Foot Stream Buffers

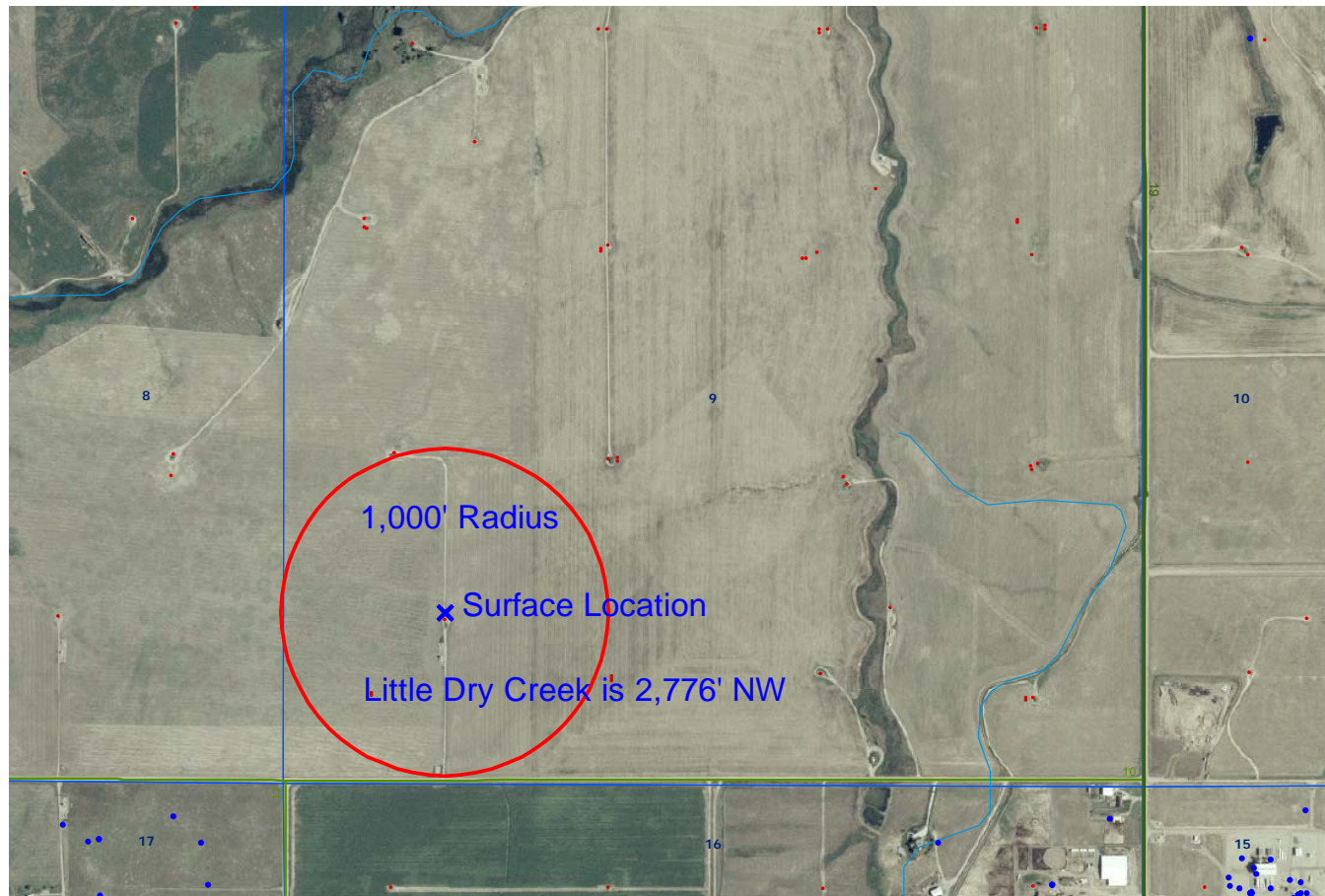
LEGEND B
1200-SEARIES WILDLIFE AREAS
□ RSO Areas
□ RSO_Osprey_Curren
□ SWH Areas
□ State Wildlife Areas



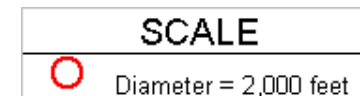
NRC 14-9




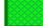



AERIAL

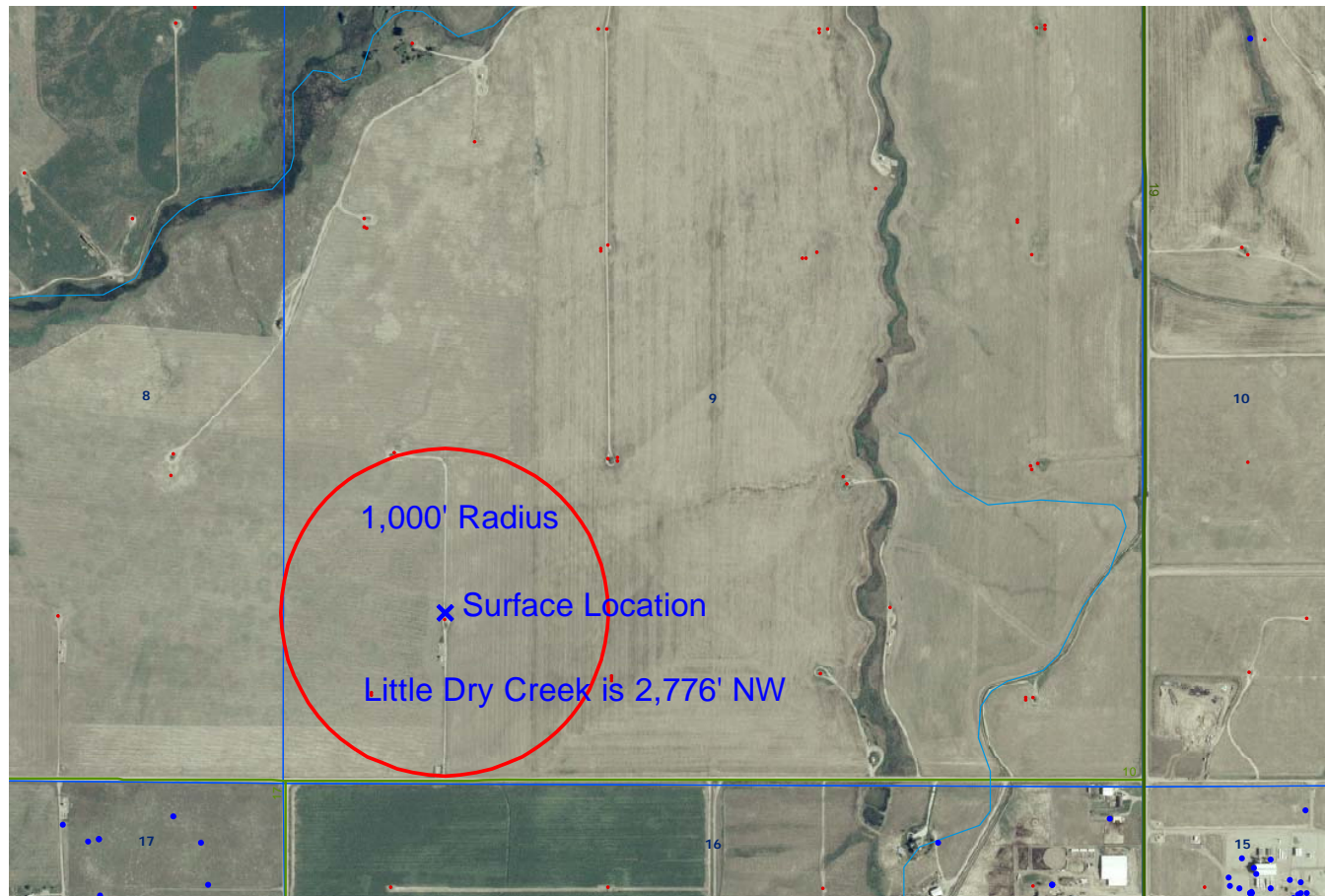
HYDROLOGY MAP-A



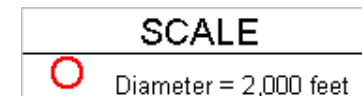
TOWNSHIP 1 NORTH, RANGE 67 WEST



LEGEND A	LEGEND B
WATER RESOURCES	1200-SEARIES WILDLIFE AREAS
 Water Wells	 RSO Areas
 Lakes	 RSO_Osprey_Curren
 Major Rivers	 SWH Areas
 Streams	 State Wildlife Areas
 300-Foot Stream Buffers	



TOWNSHIP 1 NORTH, RANGE 67 WEST



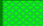

**LEGEND A**

## WATER RESOURCES

-  Water Wells
-  Lakes
-  Major Rivers
-  Streams
-  300-Foot Stream Buffers

**LEGEND B**

## 1200-SEARIES WILDLIFE AREAS

-  RSO Areas
-  RSO\_Osprey\_Curren
-  SWH Areas
-  State Wildlife Areas