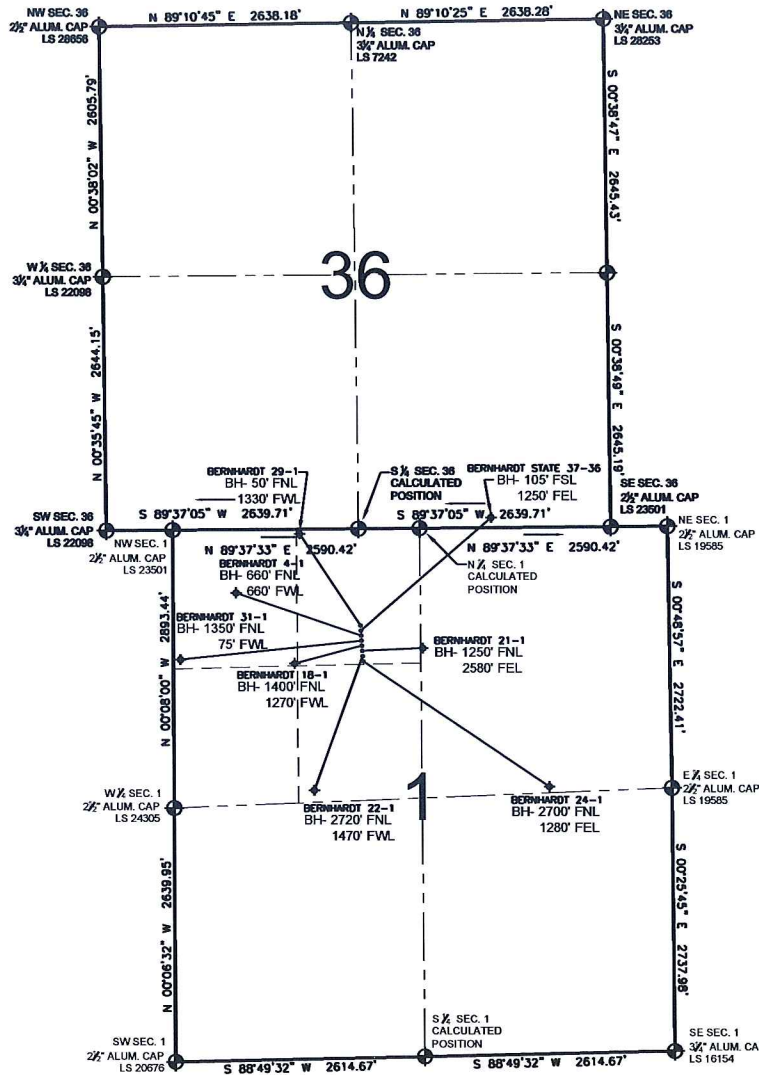


PAD DRAWING - BERNHARDT 8 PAD

SECTION 1, TOWNSHIP 4 NORTH, RANGE 67 WEST, 6TH P.M.



LEGEND

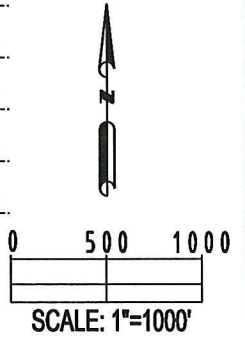
- ⊕ = EXISTING MONUMENT
- ⊙ = PROPOSED WELL
- ⊕ = BOTTOM HOLE
- ⊙ = EXISTING WELL
- BH= BOTTOM HOLE

NOTES:

- BERNHARDT 29-1 TO BE AT 1287' FNL, 1985' FWL.
- BOTTOM HOLE AT 50' FNL & 1330' FWL.
- BERNHARDT STATE 37-36 TO BE AT 1303' FNL, 1985' FWL.
- BOTTOM HOLE AT 105' FSL & 1250' FEL.
- BERNHARDT 4-1 TO BE AT 1319' FNL, 1987' FWL.
- BOTTOM HOLE AT 660' FNL & 660' FWL.
- BERNHARDT 31-1 TO BE AT 1335' FNL, 1988' FWL.
- BOTTOM HOLE AT 1350' FNL & 75' FWL.
- BERNHARDT 18-1 TO BE AT 1351' FNL, 1989' FWL.
- BOTTOM HOLE AT 1400' FNL & 1270' FWL.
- BERNHARDT 21-1 TO BE AT 1367' FNL, 1990' FWL.
- BOTTOM HOLE AT 1250' FNL & 2580' FEL.
- BERNHARDT 22-1 TO BE AT 1383' FNL, 1991' FWL.
- BOTTOM HOLE AT 2720' FNL & 1470' FWL.
- BERNHARDT 24-1 TO BE AT 1399' FNL, 1991' FWL.
- BOTTOM HOLE AT 2700' FNL & 1280' FEL.

NOTES:

1. THIS SURVEY WAS DONE BY GPS METHODS AND CONFORMS TO THE MINIMUM STANDARDS SET BY THE C.O.G.C.C., RULE NO. 215
2. ELEVATIONS SHOWN AT THE WELL HEAD, AS WELL AS HORIZONTAL CONTROL, ARE BASED ON GPS-RTK VALUES DERIVED FROM DOING 2-HOUR STATIC GPS SESSIONS AND REDUCTIONS USING O.P.U.S. SOLUTIONS.
VERTICAL = NAVD88; HORIZONTAL = NAD83/92
3. THE BEARINGS SHOWN HEREON ARE BASED ON GPS OBSERVATIONS BETWEEN THE MONUMENTS SHOWN HEREON AS FOUND ON THE FIELD DATE BELOW.
4. DISTANCES SHOWN ARE AT GROUND LEVEL, AS MEASURED IN THE FIELD, WITH TIES TO WELLS MEASURED AT A PERPENDICULAR TO SECTION LINES.



REVISIONS	
INITIAL	DATE

PREPARED BY:

PFS llc
Petroleum Field Services, LLC
1801 W. 13th Ave.
Denver, CO 80204

KERR-MCGEE OIL & GAS ONSHORE LP	
FIELD DATE: 08-26-09	PAD NAME: BERNHARDT 8 PAD
DRAWING DATE: 09-02-09	SURFACE LOCATION: WELD COUNTY, COLORADO NE 1/4 NW 1/4, SEC. 1, T4N, R67W
BY: SMF	