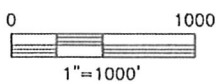
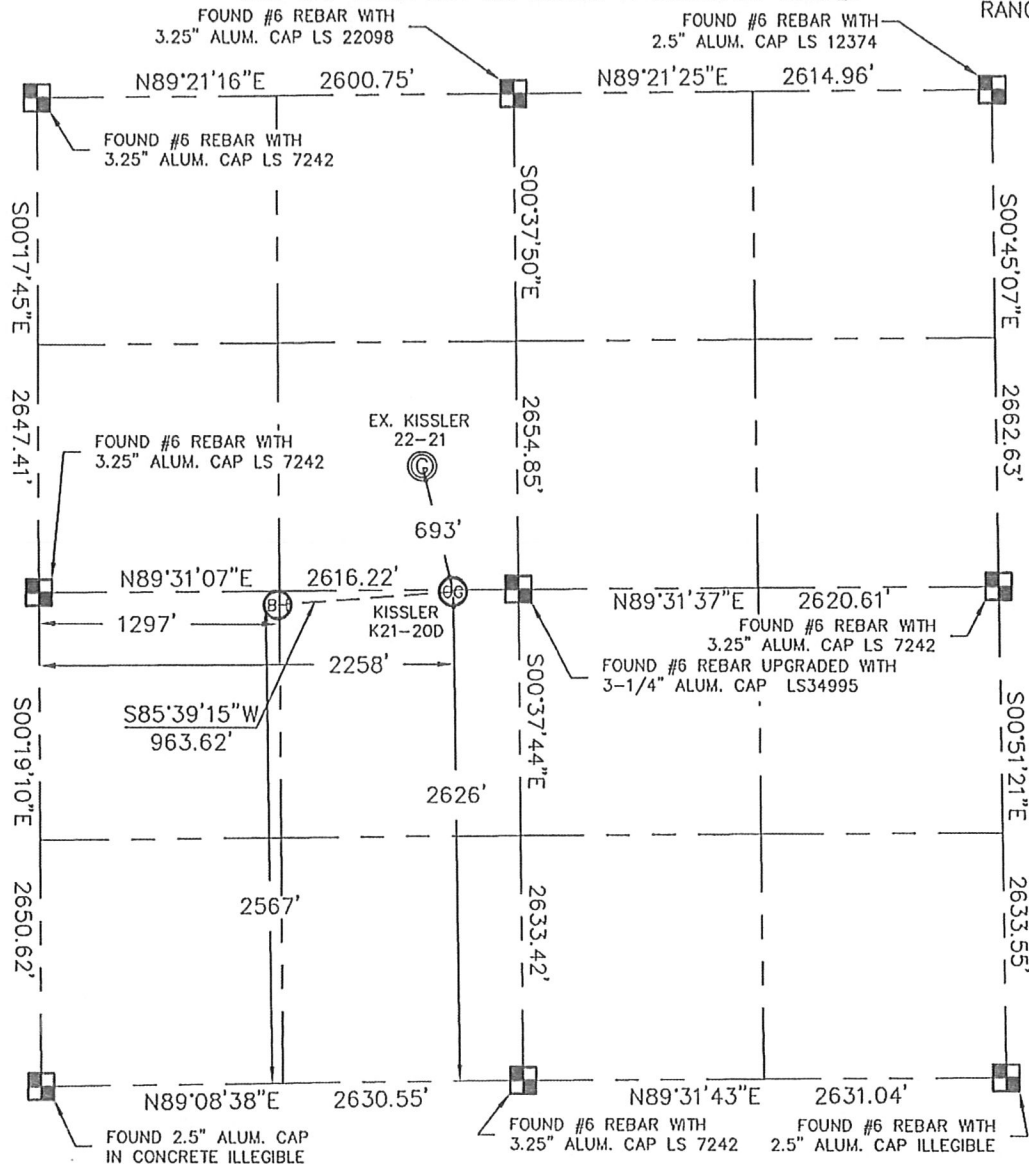


WELL LOCATION CERTIFICATE

SECTION: 21
TOWNSHIP: 4N
RANGE: 66W

THIS MAP DOES NOT REPRESENT A BOUNDARY SURVEY

In accordance with a request from Joe Martin with Noble Energy Inc.

King Surveyors Inc. has determined the surface location of the Kissler K21-20D to be 2626' from the SOUTH line and 2258' from the WEST line and the bottom hole to be 2567' from the SOUTH line and 1297' from the WEST line as measured at right angles from the section line of Section 21, Township 4 North, Range 66 West of the Sixth Principal Meridian, County of Weld, State of Colorado.

I hereby state that this Well Location Certificate was prepared by me, or under my direct supervision, that the fieldwork was completed on 6-30-09, for and on behalf of Noble Energy Inc. That this is not a Land Survey Plat or an Improvement Survey Plat, and that it is not to be relied upon for establishment of fence, building, or other future improvement lines.

NOTE:

- 1) Bearings shown are Grid Bearings of the Colorado State Plane Coordinate System, North Zone, North American Datum 1983/92.
- 2) Ground elevations are based on an observed GPS elevation (NAVD 1988 DATUM).
- 3) NEAREST EXISTING WELL: KISSLER 22-21 693'
- 4) IMPROVEMENTS: See VISIBLE IMPROVEMENTS exhibit for all visible improvements within 400' of well head.
- 5) SURFACE USE: CROP FIELD

SURFACE LOCATION
 LATITUDE: 40.29709°N
 LONGITUDE: 104.78379°W
 PDOP: 1.6
 ELEV: 4756
 1/4, 1/4: NEXSW¼
 NEAREST PROPERTY LINE: 10' NORTH

BOTTOM HOLE
 LATITUDE: 40.29691°N
 LONGITUDE: 104.78724°W

NOTE

According to Colorado law, you must commence any legal action based upon any defect in this W.L.C. within three years after you discover such defect. In no event, may any action based upon any defect in this survey be commenced more than ten years after the date of the certificate shown hereon. (13-80-105 C.R.S.)

LEGEND

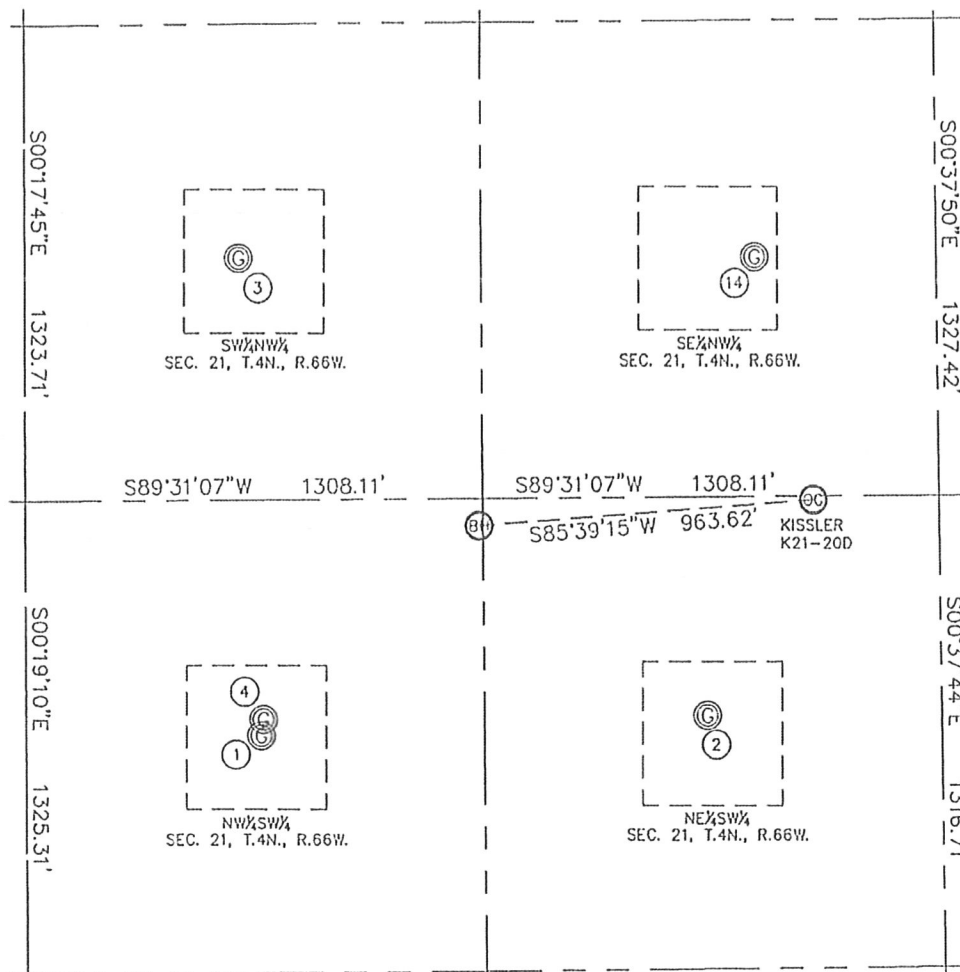
- = ALIQUOT MONUMENT AS DESCRIBED
 = CALCULATED POSITION

Steven A. Lund On behalf of King Surveyors, Inc.
 Licensed Land Surveyor No. 34995
 State of Colorado

PROJECT#: 2008041

KING SURVEYORS, INC. 650 GARDEN DR. WINDSOR, CO 80550
SITE SKETCH

SECTION: 21
 TOWNSHIP: 4N
 RANGE: 66W



- | | | | | |
|------------------|------------------|------------------|------------------|------------------|
| ① | ② | ③ | ④ | ⑭ |
| KISSLER K 21-12 | KISSLER K 21-11 | KISSLER 12-21 #1 | KISSLER 21-32D | KISSLER 22-21 |
| NW1/4SW1/4 | NE1/4SW1/4 | SW1/4NW1/4 | NW1/4SW1/4 | SE1/4NW1/4 |
| 670' FWL | 1951' FWL | 1979' FNL | 2034' FSL | 1990' FNL |
| 1989' FSL | 2029' FSL | 609' FWL | 676' FWL | 2093' FNL |
| LAT-40.29531°N | LAT-40.29545°N | LAT-40.29896°N | LAT-40.29544°N | LAT-40.29894°N |
| LONG-104.78949°W | LONG-104.78490°W | LONG-104.78969°W | LONG-104.78947°W | LONG-104.78437°W |
| PDOP: 1.9 | PDOP: 2.1 | PDOP: 1.5 | PDOP: 1.7 | PDOP: 1.8 |
| ELEV: 4756 | ELEV: 4757 | ELEV: 4750 | ELEV: 4755 | ELEV: 4756 |

