

T5S, R96W, 6th P.M.

Encana Oil & Gas (USA) INC.

Well location, N. PARACHUTE WFO4B-25 H26 596 (SURFACE LOCATION), located as shown in the SE 1/4 NE 1/4 of Section 26, T5S, R96W, 6th P.M., Garfield County, Colorado.

BASIS OF ELEVATION

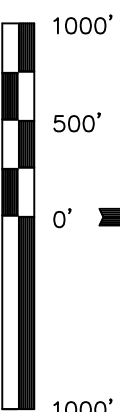
W.C.
1917 Brass Cap
1.7' High
Lat: 39.590856
Long: 108.127361

SPOT ELEVATION AT THE NORTHWEST CORNER OF SECTION 30, T5S, R95W, 6th P.M. TAKEN FROM THE FORKED GULCH QUADRANGLE, COLORADO, GARFIELD COUNTY, 7.5 MINUTE SERIES (TOPOGRAPHICAL MAP) PUBLISHED BY THE UNITED STATES DEPARTMENT OF THE INTERIOR, GEOLOGICAL SURVEY. SAID ELEVATION IS MARKED AS BEING 5966 FEET.

BASIS OF BEARINGS

BASIS OF BEARINGS IS A G.P.S. OBSERVATION.

Sheet 1c of 11



SCALE
CERTIFICATE

THIS IS TO CERTIFY THAT THE ABOVE PLAT WAS PREPARED FROM FIELD NOTES OF ACTUAL SURVEYS MADE BY ME, OR UNDER MY SUPERVISION AND THAT THE SAME ARE TRUE AND CORRECT TO THE BEST OF MY KNOWLEDGE AND BELIEF.

Revised: 08-24-09 D.R.B.
Revised: 03-25-09 D.R.B.

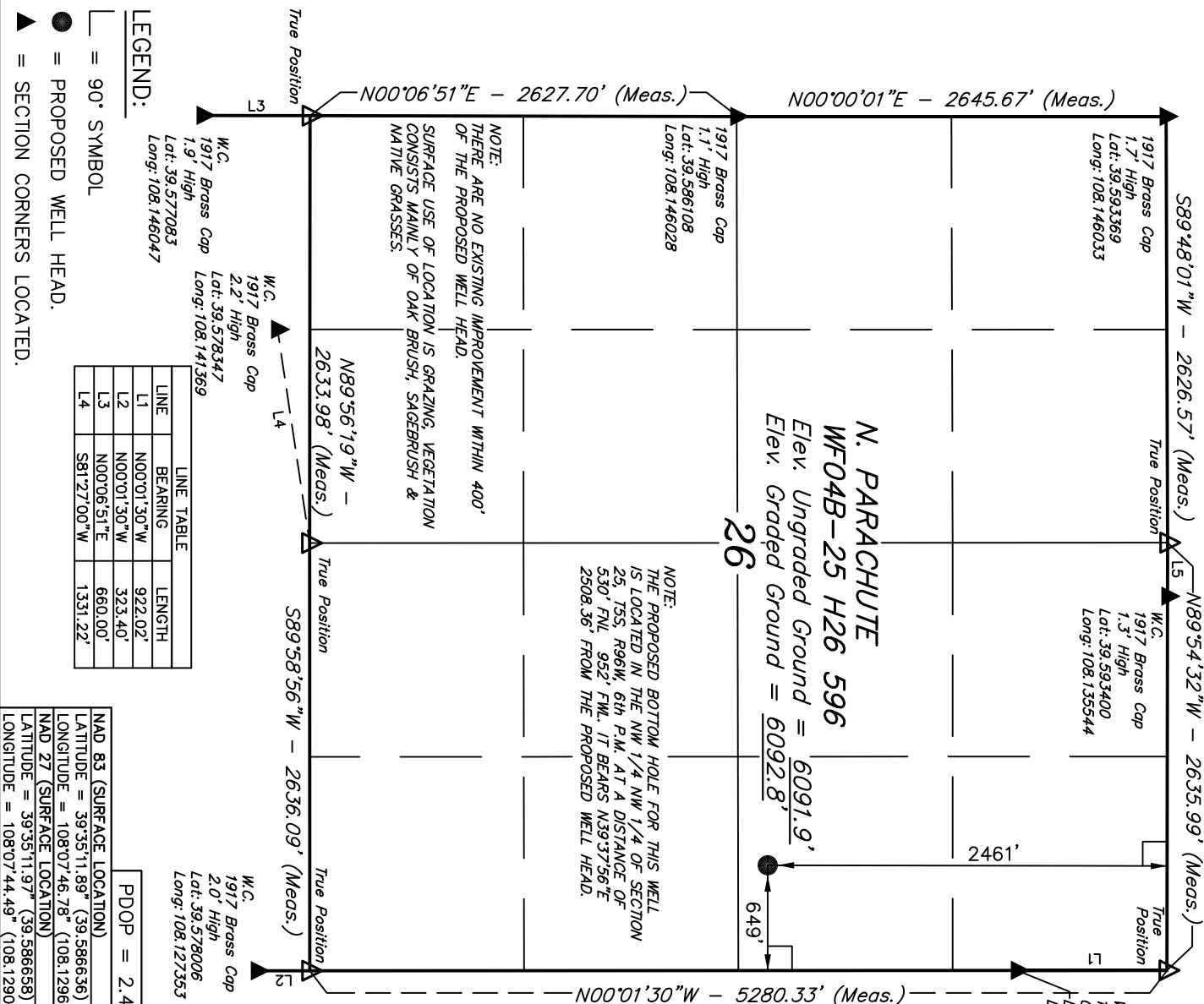
REGISTERED LAND SURVEYOR
REGISTRATION NO. 172492
STATE OF COLORADO

UNTAEH ENGINEERING & LAND SURVEYING
85 SOUTH 200 EAST - VERNAL, UTAH 84078
(435) 789-1017

SCALE 1" = 1000'
DATE SURVEYED: 10-30-08
DATE DRAWN: 12-16-08

PARTY B.H. S.K. D.R.B.
REFERENCES G.L.O. PLAT

WEATHER COLD
FILE Encana Oil & Gas (USA) INC.



T5S, R96W, 6th P.M.

Encana Oil & Gas (USA) INC.

Well location, N. PARACHUTE WF04B-25 H26 596 (TARGET BOTTOM HOLE), located as shown in the NW 1/4 NW 1/4 of Section 25, T5S, R96W, 6th P.M., Garfield County, Colorado.

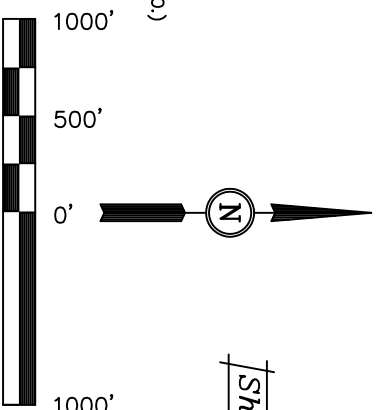
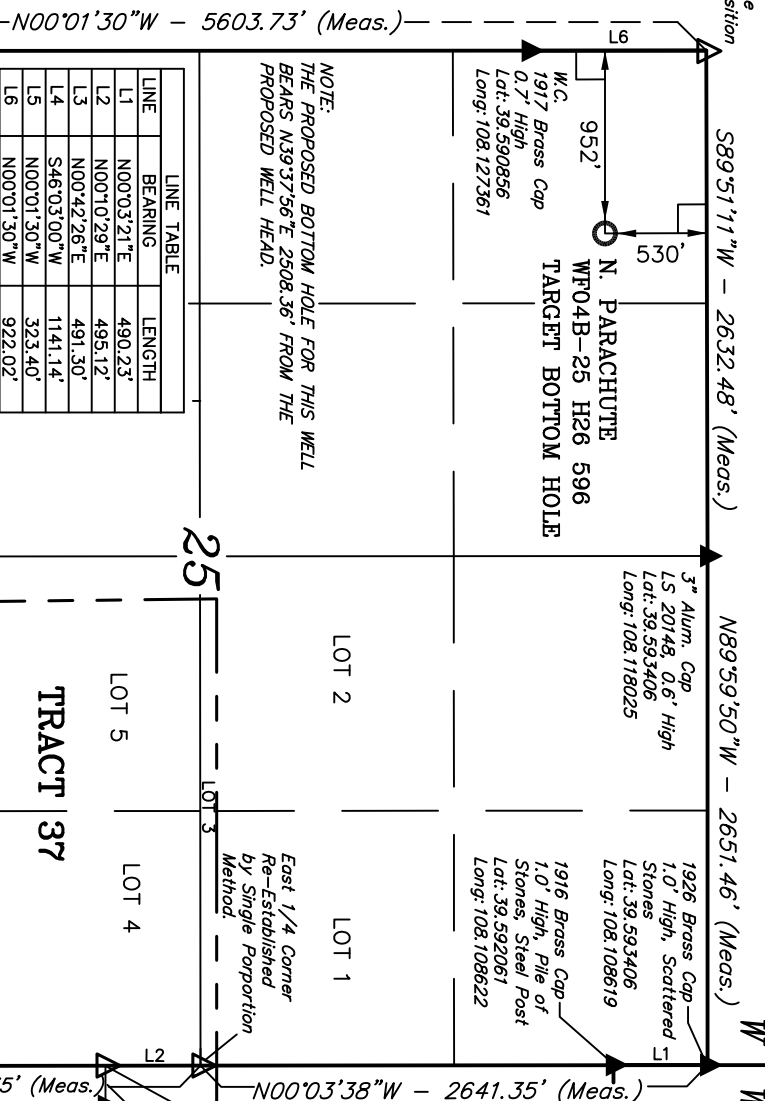
BASIS OF ELEVATION

SPOT ELEVATION AT THE NORTHWEST CORNER OF SECTION 30, T5S, R95W, 6th P.M. TAKEN FROM THE FORKED GULCH QUADRANGLE, COLORADO, GARFIELD COUNTY, 7.5 MINUTE SERIES (TOPOGRAPHICAL MAP) PUBLISHED BY THE UNITED STATES DEPARTMENT OF THE INTERIOR, GEOLOGICAL SURVEY. SAID ELEVATION IS MARKED AS BEING 5966 FEET.

BASIS OF BEARINGS

BASIS OF BEARINGS IS A G.P.S. OBSERVATION.

Sheet 1d of 11



SCALE

CERTIFICATE

THIS IS TO CERTIFY THAT THE ABOVE PLAT WAS PREPARED FROM FIELD NOTES OF ACTUAL SURVEYS MADE BY ME, OBTAINED BY SUPERVISION AND THAT THE SAME ARE TRUE AND CORRECT TO THE BEST OF MY KNOWLEDGE AND BELIEF.

REGISTERED LAND SURVEYOR
REGISTRATION NO. 17492
STATE OF COLORADO

Revised: 08-24-09 D.R.B.
Revised: 03-25-09 D.R.B.

UINTAH ENGINEERING & LAND SURVEYING
85 SOUTH 200 EAST - VERNAL, UTAH 84078
(435) 789-1017

SCALE	DATE SURVEYED:	DATE DRAWN:
1" = 1000'	10-30-08	12-16-08

PARTY	REFERENCES
B.H. S.K. D.R.B.	G.L.O. PLAT

WEATHER	FILE
COLD	Encana Oil & Gas (USA) INC.

LEGEND:

- 90° SYMBOL
- PROPOSED WELL HEAD.
- SECTION CORNERS LOCATED.

1917 Brass Cap
1.5' High, Mound
of Stones

W.C.
1917 Brass Cap
2.0' High
Lat: 39.578006
Long: 108.127353

SW Cor Sec 30
1916 Brass Cap
Buried 0.4' Deep

NAD 83 (TARGET BOTTOM HOLE)
LATITUDE = 39.3530.98" (39.591939)
LONGITUDE = 108.0726.35" (108.123386)
NAD 27 (TARGET BOTTOM HOLE)
LATITUDE = 39.3531.06" (39.591961)
LONGITUDE = 108.0724.07" (108.123353)