

T5S, R96W, 6th P.M.

Encana Oil & Gas (USA) INC.

Well location, N. PARACHUTE WF03A-25 H26 596 (SURFACE LOCATION), located as shown in the SE 1/4 NE 1/4 of Section 26, T5S, R96W, 6th P.M., Garfield County, Colorado.

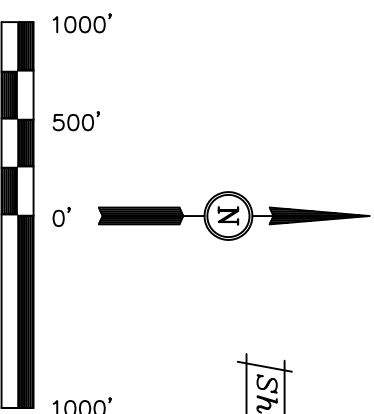
BASIS OF ELEVATION

SPOT ELEVATION AT THE NORTHWEST CORNER OF SECTION 30, T5S, R95W, 6th P.M. TAKEN FROM THE FORKED GULCH QUADRANGLE, COLORADO, GARFIELD COUNTY, 7.5 MINUTE SERIES (TOPOGRAPHICAL MAP) PUBLISHED BY THE UNITED STATES DEPARTMENT OF THE INTERIOR, GEOLOGICAL SURVEY. SAID ELEVATION IS MARKED AS BEING 5966 FEET.

BASIS OF BEARINGS

BASIS OF BEARINGS IS A G.P.S. OBSERVATION.

Sheet 1a of 11



SCALE
CERTIFICATE

THIS IS TO CERTIFY THAT THE ABOVE PLAT WAS PREPARED FROM FIELD NOTES OF ACTUAL SURVEYS MADE BY ME OR UNDER MY SUPERVISION AND THAT THE SAME ARE TRUE AND CORRECT TO THE BEST OF MY KNOWLEDGE AND BELIEF.

Revised: 08-24-09 D.R.B.
Revised: 03-25-09 D.R.B.

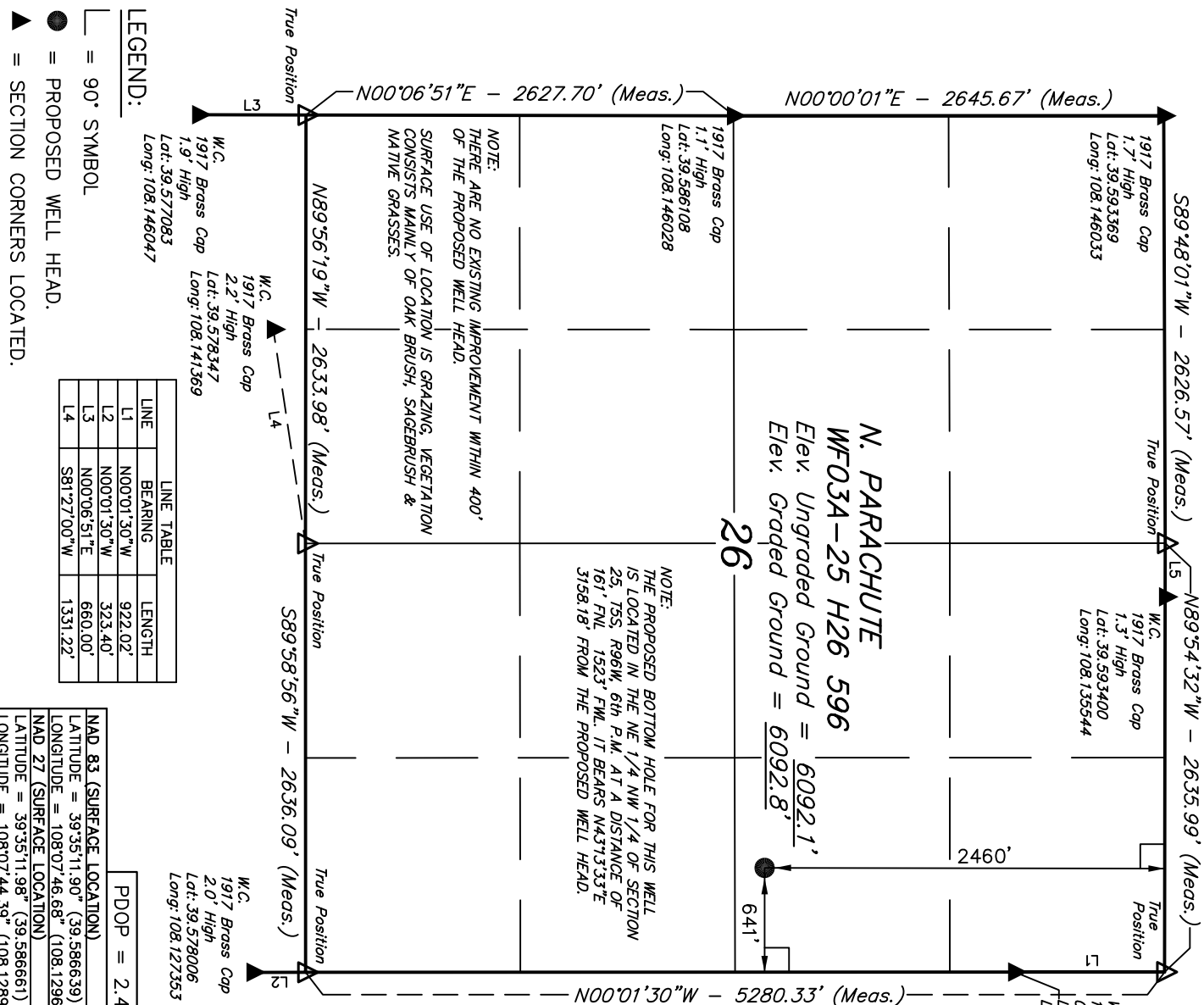
REGISTERED LAND SURVEYOR
REGISTRATION NO. 17492
STATE OF COLORADO

UNTAH ENGINEERING & LAND SURVEYING
85 SOUTH 200 EAST - VERNAL, UTAH 84078
(435) 789-1017

SCALE 1" = 1000'
DATE SURVEYED: 10-30-08 DATE DRAWN: 12-16-08

PARTY B.H. S.K. D.R.B.
REFERENCES G.L.O. PLAT

WEATHER COLD
FILE Encana Oil & Gas (USA) INC.



NOTE:
THERE ARE NO EXISTING IMPROVEMENT WITHIN 400'
OF THE PROPOSED WELL HEAD.
SURFACE USE OF LOCATION IS GRAZING, VEGETATION
CONSISTS MAINLY OF OAK BRUSH, SAGEBRUSH &
NATIVE GRASSES.

NOTE:
THE PROPOSED BOTTOM HOLE FOR THIS WELL
IS LOCATED IN THE NE 1/4 NW 1/4 OF SECTION
25, T5S, R96W, 6th P.M. AT A DISTANCE OF
161' FWL, 1523' FWL, IT BEARS N43°33'E
3158.18' FROM THE PROPOSED WELL HEAD.

LEGEND:

- = 90° SYMBOL
- = PROPOSED WELL HEAD.
- ▲ = SECTION CORNERS LOCATED.

LINE	BEARING	LENGTH
L1	N00°01'30"W	922.02'
L2	N00°01'30"W	323.40'
L3	N00°06'51"E	660.00'
L4	S81°27'00"W	1331.22'

W.C.
1917 Brass Cap
2.2' High
Lat: 39.578347
Long: 108.141369

W.C.
1917 Brass Cap
1.9' High
Lat: 39.577083
Long: 108.146047

W.C.
1917 Brass Cap
2.0' High
Lat: 39.578006
Long: 108.127353

PDOP = 2.4

NAD 83 (SURFACE LOCATION)

LATITUDE = 39°35'11.90" (39.586639)
LONGITUDE = 108°07'46.68" (108.129633)

NAD 27 (SURFACE LOCATION)

LATITUDE = 39°35'11.98" (39.586661)
LONGITUDE = 108°07'44.39" (108.128997)

T5S, R96W, 6th P.M.

Encana Oil & Gas (USA) INC.

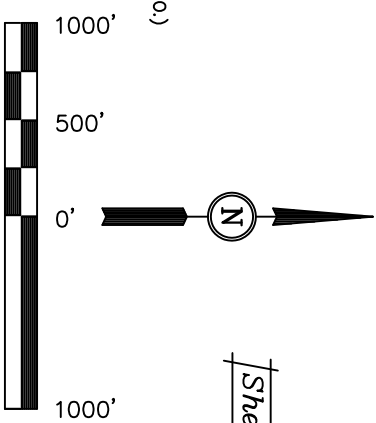
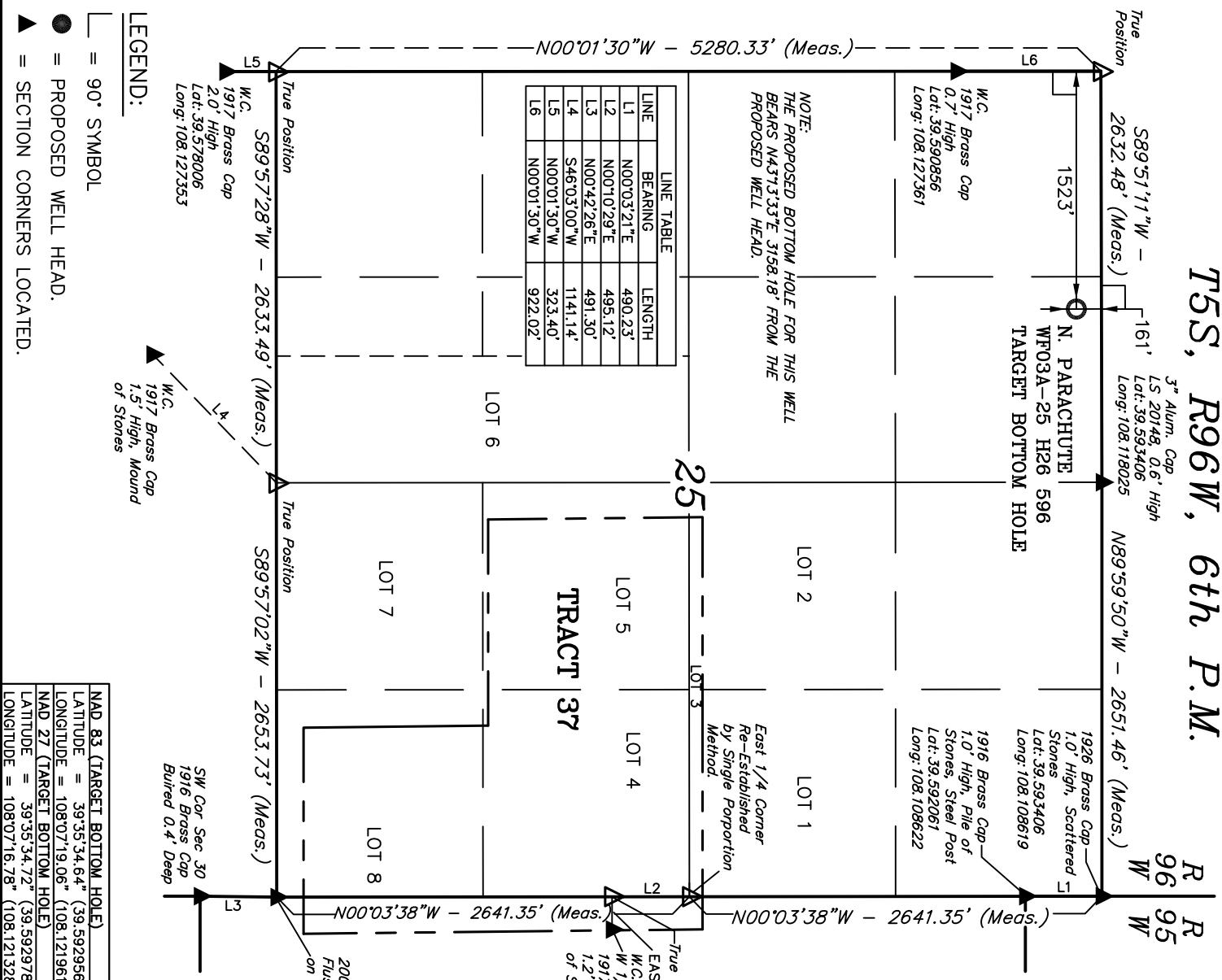
Well location, N. PARACHUTE WF03A-25 H26 596 (TARGET BOTTOM HOLE), located as shown in the NE 1/4 NW 1/4 of Section 25, T5S, R96W, 6th P.M., Garfield County, Colorado.

BASIS OF ELEVATION

SPOT ELEVATION AT THE NORTHWEST CORNER OF SECTION 30, T5S, R95W, 6th P.M. TAKEN FROM THE FORKED GULCH QUADRANGLE, COLORADO, GARFIELD COUNTY, 7.5 MINUTE SERIES (TOPOGRAPHICAL MAP) PUBLISHED BY THE UNITED STATES DEPARTMENT OF THE INTERIOR, GEOLOGICAL SURVEY. SAID ELEVATION IS MARKED AS BEING 5966 FEET.

BASIS OF BEARINGS

BASIS OF BEARINGS IS A G.P.S. OBSERVATION.



CERTIFICATE

THIS IS TO CERTIFY THAT THE ABOVE PLAT WAS PREPARED FROM FIELD NOTES OF ACTUAL SURVEYS MADE BY ME UNDER MY SUPERVISION AND THAT THE SAME ARE TRUE AND CORRECT TO THE BEST OF MY KNOWLEDGE AND BELIEF.

REGISTERED LAND SURVEYOR
REGISTRATION NO. 17492
STATE OF COLORADO

UTAH ENGINEERING & LAND SURVEYING
85 SOUTH 200 EAST - VERNAL, UTAH 84078
(435) 789-1017

SCALE	1" = 1000'	DATE SURVEYED:	DATE DRAWN:
PARTY	B.H. S.K. D.R.B.	10-30-08	12-16-08
WEATHER	COLD	REFERENCES	G.L.O. PLAT
		FILE	Encana Oil & Gas (USA) INC.