

multi well plan

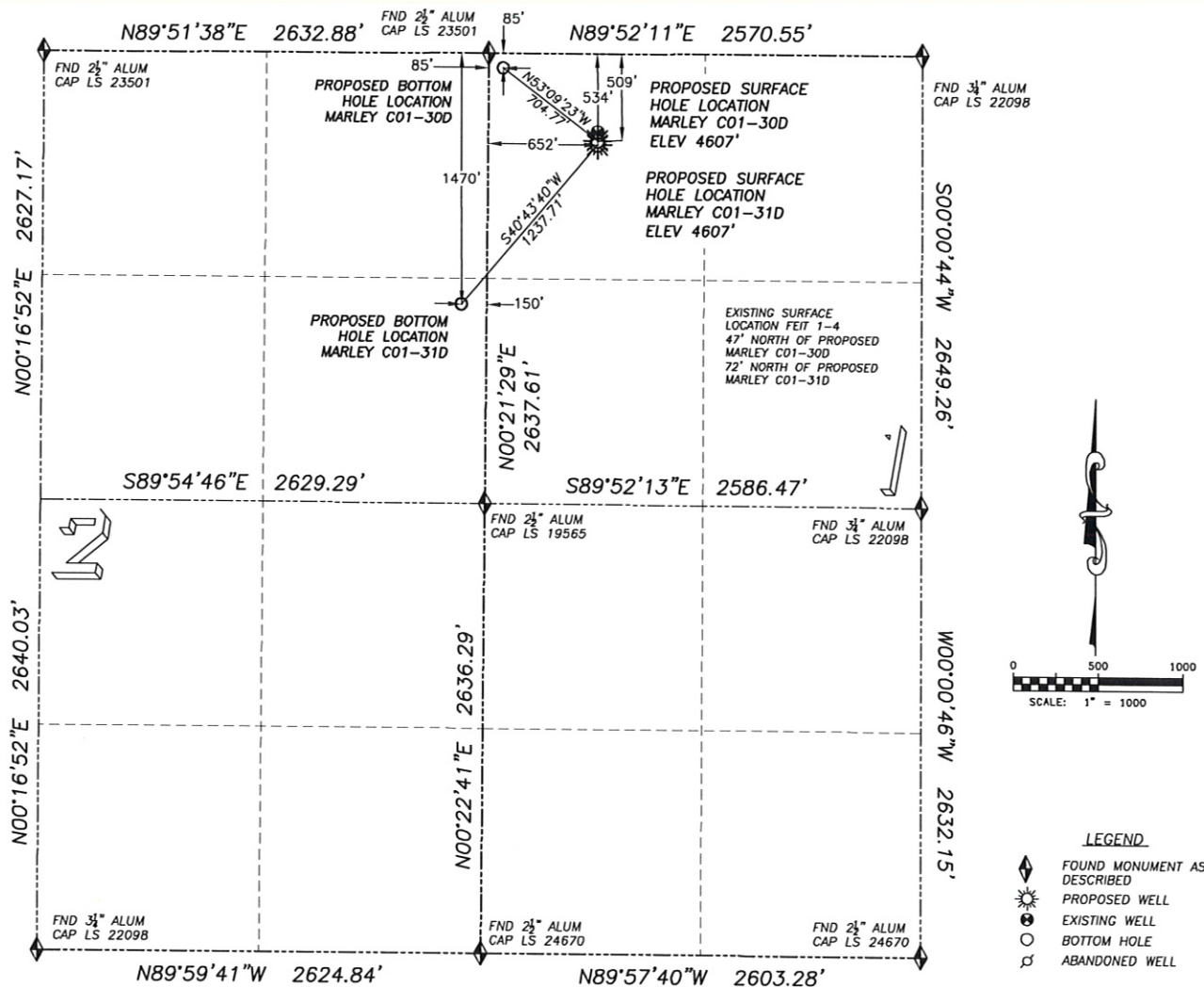
DALEY LAND SURVEYING, INC.

PARKER, CO. 80134

303 953 9841

DIRECTIONAL LAYOUT MARLEY C01-30D & MARLEY C01-31D

SECTION 1 & 2, TOWNSHIP 4 NORTH, RANGE 64 WEST OF THE 6TH PRINCIPAL MERIDIAN



NAD 83 LATITUDE AND LONGITUDE

MARLEY C01-30D SURFACE HOLE:

LATITUDE: N40.34726°
LONGITUDE: W104.50581°
ELEVATION: 4607'
PDOP 1.8
509' FNL, 85' FWL

BOTTOM HOLE:

LATITUDE: N40.34842°
LONGITUDE: W104.50783°
85' FNL, 85' FWL

NEAREST EXISTING WELL:

FEIT 1-4 SURFACE HOLE
LATITUDE: N40.34738°
LONGITUDE: W104.50581°
ELEVATION: 4607'
47' NORTH

NAD 83 LATITUDE AND LONGITUDE

MARLEY C01-31D SURFACE HOLE:

LATITUDE: N40.34719°
LONGITUDE: W104.50581°
ELEVATION: 4607'
PDOP 1.9
534' FNL, 652' FWL

BOTTOM HOLE:

LATITUDE: N40.34461°
LONGITUDE: W104.50870°
1470' FNL, 150' FEL

NEAREST EXISTING WELL:

FEIT 1-4 SURFACE HOLE
LATITUDE: N40.34738°
LONGITUDE: W104.50581°
ELEVATION: 4607'
72' NORTH