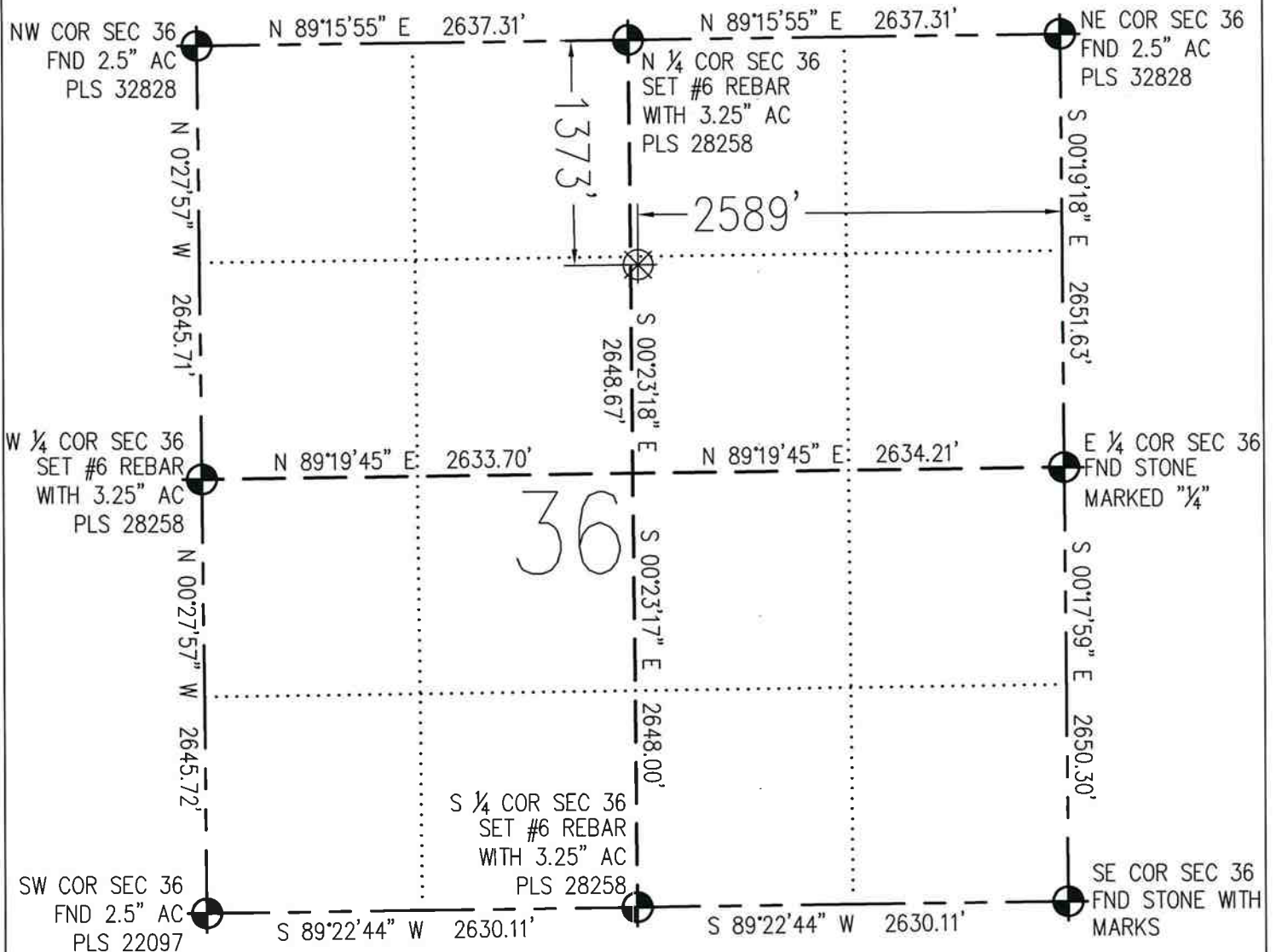


WELL LOCATION CERTIFICATE



WELL LOCATION: LAT (N): 40.446382° LONG (W): 104.385056° ELEVATION: 4736'
 IN ACCORDANCE WITH A REQUEST FROM CRAIG RASMUSON, PETROLEUM DEVELOPMENT CORPORATION,
 BASELINE ENGINEERING CORP. HEREBY CERTIFIES THAT THE PROPOSED WELL LOCATION SHOWN HEREON,
WELLS RANCH 36N, IS LOCATED **1373'** FNL & **2589'** FEL, NE 1/4 SEC 36, T6N, R63W.

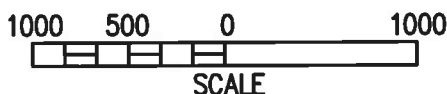
SURFACE LAND USE: PASTURE
 SURFACE IMPROVEMENTS WITHIN 200': NONE

LEGEND

- MONUMENT (AS DESCRIBED)
- PROPOSED WELL (SURFACE UNLESS NOTED)
- SURFACE IMPROVEMENTS (AS SHOWN)

FNL = FROM NORTH LINE
 FEL = FROM EAST LINE

PREPARED BY JOHN C BARICKMAN PLS. # 28258,
 FOR AND ON BEHALF OF BASELINE CORP.



BASELINE
 engineering corporation

920 9TH AVENUE
 GREELEY, CO. 80631
 PH (970) 353-7600
 FAX (970) 353-7601

NOTES:

- LAT/LONG SHOWN ARE BASED ON A GPS OBSERVATION (NAD83), PDOP VALUE LESS THAN 6
- GROUND ELEVATION BASED ON A GPS OBSERVATION (NAVD 88 DATUM)
- BEARINGS SHOWN ARE GRID BEARINGS OF THE CO STATE PLANE CS (NORTH ZONE), NAD 83.
- ALL DISTANCES SHOWN ARE FIELD MEASURED UNLESS OTHERWISE NOTED
- DISTANCES TO WELL ARE MEASURED PERPENDICULAR TO SECTION LINES (AS SHOWN)
- THIS IS NOT A MONUMENTED BOUNDARY SURVEY

WELL NAME: WELLS RANCH 36N	DATE: 6/19/2008	FIELD DATE: 6-18-2008	BY: BMT	CHKD: JCB	REV./DATE: XXX/XX/XX/08
SURFACE LOCATION: SWNE SECTION 36, T6N, R63W, 6TH P.M. WELD COUNTY, CO			SCALE: 1" = 1000'		SHEET #: 1 OF 1