

Stell Surveying Services, LLC

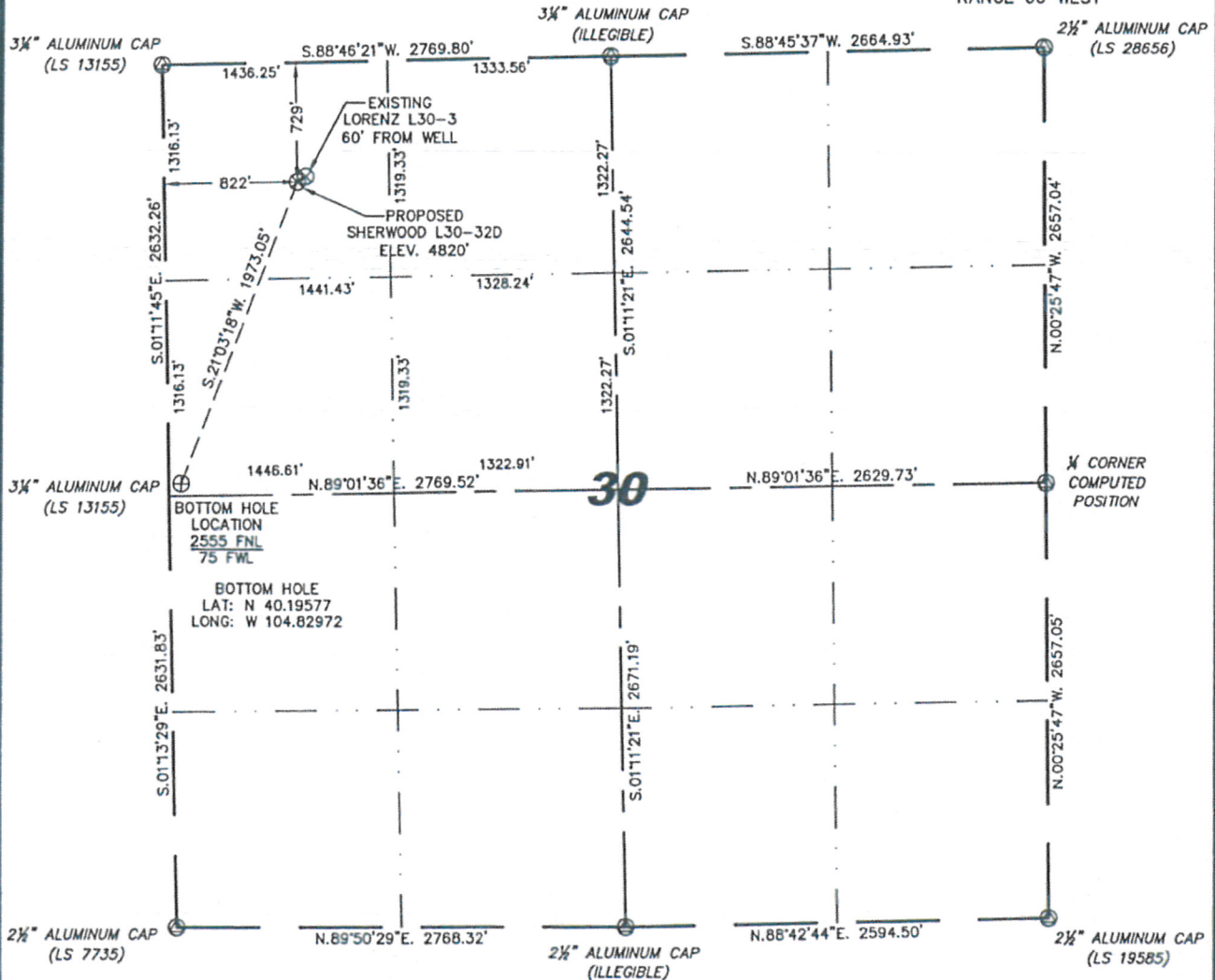
1102 West 19th Street P.O. BOX 2073

Cheyenne, Wyoming 82009

WELL LOCATION CERTIFICATE

THIS MAP DOES NOT REPRESENT A BOUNDARY SURVEY

SECTION 30
TOWNSHIP 3 NORTH
RANGE 66 WEST



0 1000

Scale: 1" = 1000'

IN ACCORDANCE WITH A REQUEST FROM JOE MARTIN - NOBLE ENERGY INC., STELL SURVEYING SERVICES, LLC HAS DETERMINED THE LOCATION OF THE SHERWOOD L30-320 WELL TO BE 729' FNL, 822' FWL, AS MEASURED AT NINETY (90) DEGREES FROM THE SECTION LINES, SECTION 30, TOWNSHIP 3 NORTH, RANGE 66 WEST, 6TH PRINCIPLE MERIDIAN, WELD COUNTY, COLORADO.

I HEREBY CERTIFY THAT THIS WELL LOCATION CERTIFICATE WAS PREPARED BY ME, OR UNDER MY DIRECT SUPERVISION, THAT THE FIELD WORK WAS COMPLETED ON 06/04/2009, FOR AND ON BEHALF OF NOBLE ENERGY INC., THAT IT IS NOT A LAND SURVEY PLAT OR AN IMPROVEMENT SURVEY PLAT, AND THAT IT IS NOT TO BE RELIED UPON FOR ESTABLISHMENT OF FENCE, BUILDING, OR OTHER FUTURE IMPROVEMENT LINES.

NOTES:

- 1) BASIS OF BEARINGS FOR THIS MAP ARE BASED UPON GPS OBSERVATIONS MADE ON 11/05/2008 BETWEEN MONUMENTS LOCATED AT THE SOUTHEAST SECTION CORNER AND THE NORTHEAST SECTION CORNER OF SAID SECTION AND WITH ALL BEARINGS SHOWN HEREON RELATIVE THERETO.
- 2) ELEVATIONS ARE BASED UPON NGS OPUS SOLUTION NAVD 88 DATUM.
- 3) THE NEAREST EXISTING WELL IS: LORENZ L30-3, 60' NORTHEAST.
- 4) SEE VISIBLE IMPROVEMENTS EXHIBIT FOR ALL IMPROVEMENTS WITHIN 400'.
- 5) THE LOCATION FALLS IN PASTURE LAND.

LATITUDE & LONGITUDE (NAD 83 SURFACE HOLE):
LATITUDE: N 40.20081°
LONGITUDE: W 104.82713°
PDOP: 2.1
QUARTER-QUARTER: NW/4NW/4
NEAREST PROPERTY LINE: 94' TO THE SOUTHWEST

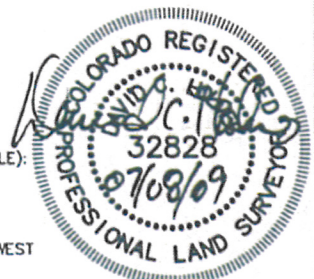
LEGEND

- ⊙ FOUND SURVEY MONUMENT PER MONUMENT RECORD - EXCEPTIONS NOTED.
- (C) CALCULATED DIMENSION

David C. Holmes
Professional Land Surveyor Registration No. 32828
State of Colorado

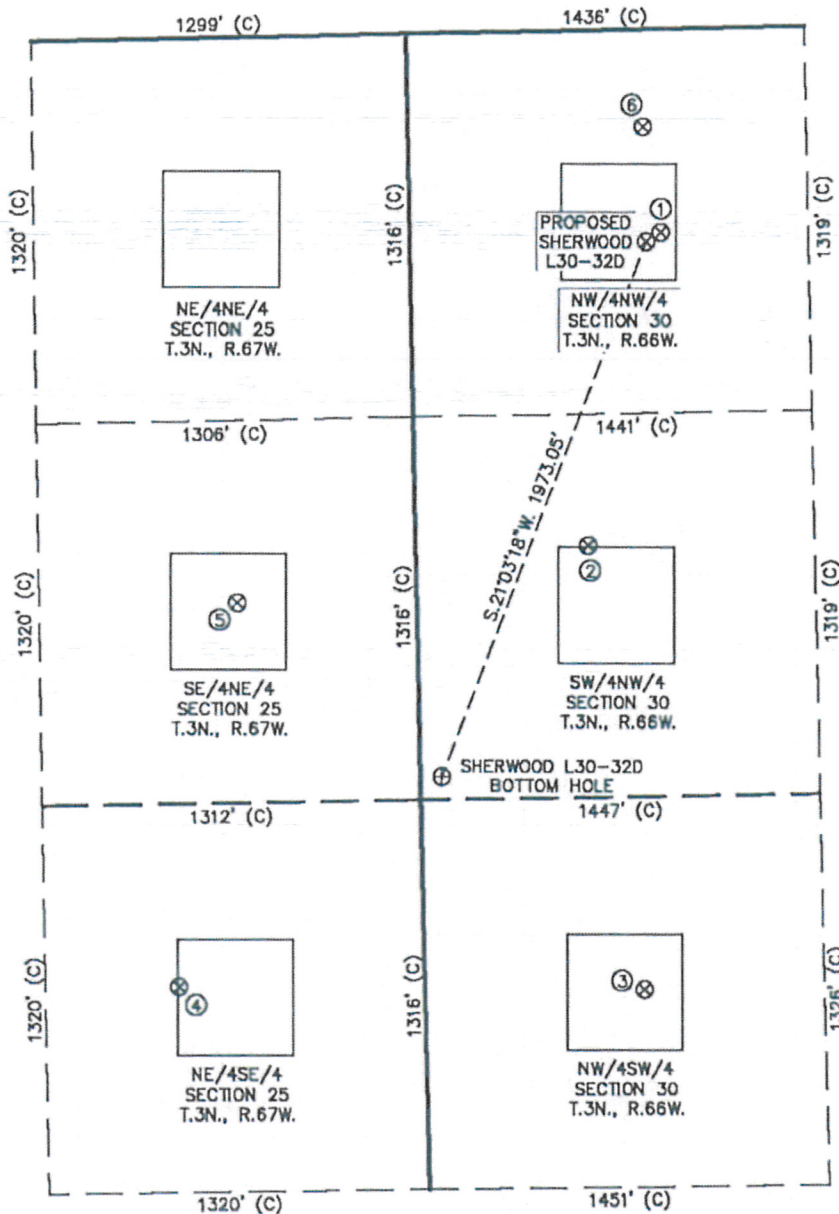
JOB #: 09086

Completed 07/06/2009

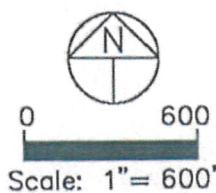


SITE SKETCH - SHERWOOD L30-32D

SECTION 30
TOWNSHIP 3 NORTH
RANGE 66 WEST



- | | |
|-------------------------------------------------------------------------------------------------------------------------------------------------|------------------------------------------------------------------------------------------------------------------------------------|
| ①
LORENZ L30-3
NW/NW SEC. 30
T.3N., R.66W.
698' FNL
873' FWL
EL 4820'
N 40.20089
W 104.82695
PDOP 2.1 | ②
LORENZ L30-5
SW/NW SEC. 30
T.3N., R.66W.
1789' FNL
598' FWL
EL 4804'
N 40.19794
W 104.82788
PDOP 2.6 |
| ③
LORENZ L30-12
NW/SW SEC. 30
T.3N., R.66W.
1979' FSL
762' FWL
EL 4808'
N 40.19375
W 104.82722
PDOP 3.9 | ④
MAGNESS 43-25
NE/SE SEC. 25
T.3N., R.67W.
1963' FSL
851' FEL
EL 4809'
N 40.19381
W 104.83300
PDOP 1.8 |
| ⑤
ERICKSON-
BIRKLE P25-8J
SE/NE SEC. 25
T.3N., R.67W.
1978' FNL
622' FEL
EL 4806'
N 40.19742
W 104.83224
PDOP 1.8 | ⑥
LORENZ L30-40
NW/NW SEC. 30
T.3N., R.66W.
334' FNL
818' FWL
EL 4805'
N 40.20189
W 104.82716
PDOP 2.1 |



- NOTES:
- 1) THIS SKETCH DOES NOT REPRESENT A BOUNDARY SURVEY.
 - 2) THE DATUM FOR THE LATITUDES AND LONGITUDES ON THIS SKETCH IS NAD83.