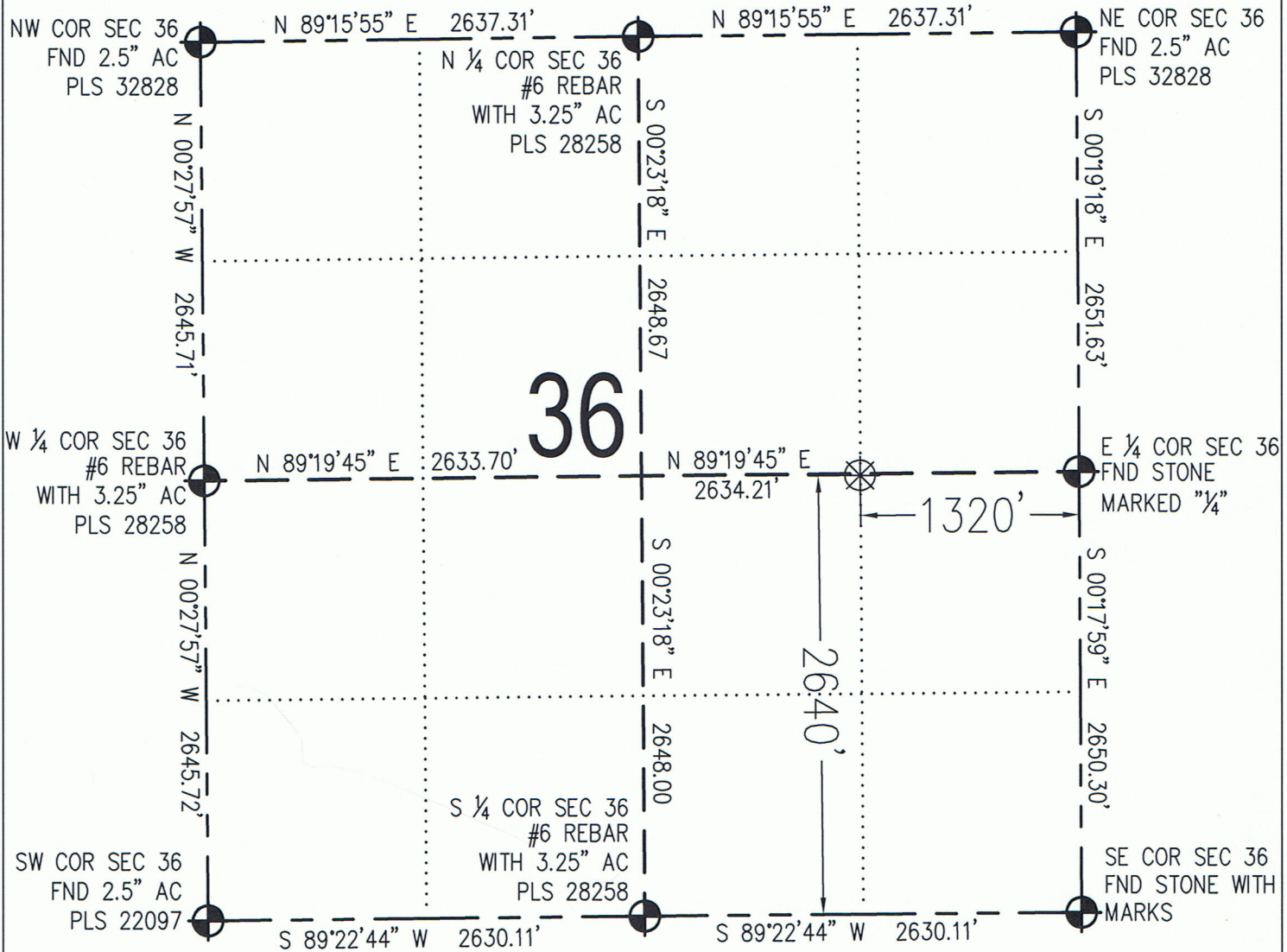


# WELL LOCATION CERTIFICATE



WELL LOCATION: LAT (N): 40.442853° LONG (W): 104.380528° ELEVATION: 4708'  
 IN ACCORDANCE WITH A REQUEST FROM CRAIG RASMUSON, PETROLEUM DEVELOPMENT CORPORATION,  
 BASELINE ENGINEERING CORP. HEREBY CERTIFIES THAT THE PROPOSED WELL LOCATION SHOWN HEREON,  
**WELLS RANCH 36S**, IS LOCATED **2640'** FSL & **1320'** FEL, SE ¼ SEC 36, T6N, R63W.

SURFACE LAND USE: PASTURE  
 SURFACE IMPROVEMENTS WITHIN 200': NONE

## LEGEND



MONUMENT (AS DESCRIBED)



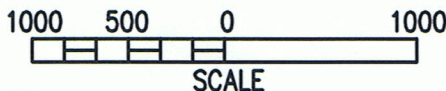
PROPOSED WELL (SURFACE UNLESS NOTED)



SURFACE IMPROVEMENTS (AS SHOWN)

FSL = FROM SOUTH LINE  
 FEL = FROM EAST LINE

PREPARED BY RAYMOND R. HEBBERT PLS. # 14833,  
 FOR AND ON BEHALF OF BASELINE CORP.



**BASELINE**  
 engineering corporation

920 9TH AVENUE  
 GREELEY, CO. 80631  
 PH (970) 353-7600  
 FAX (970) 353-7601

## NOTES:

- LAT/LONG SHOWN ARE BASED ON A GPS OBSERVATION (NAD83), PDOP VALUE LESS THAN 6
- GROUND ELEVATION BASED ON A GPS OBSERVATION (NAVD 88 DATUM)
- BEARINGS SHOWN ARE GRID BEARINGS OF THE CO STATE PLANE CS (NORTH ZONE), NAD 83.
- ALL DISTANCES SHOWN ARE FIELD MEASURED UNLESS OTHERWISE NOTED
- DISTANCES TO WELL ARE MEASURED PERPENDICULAR TO SECTION LINES (AS SHOWN)
- THIS IS NOT A MONUMENTED BOUNDARY SURVEY

WELL NAME: WELLS RANCH 36S	DATE: 6/27/2008	FIELD DATE: 6-18-2008	BY: BMT	CHKD: JCB	REV./DATE: XXX/XX/XX/08
SURFACE LOCATION: NWSE SECTION 36, T6N, R63W, 6TH P.M. WELD COUNTY, CO			SCALE: 1" = 1000'		SHEET #: 1 OF 1