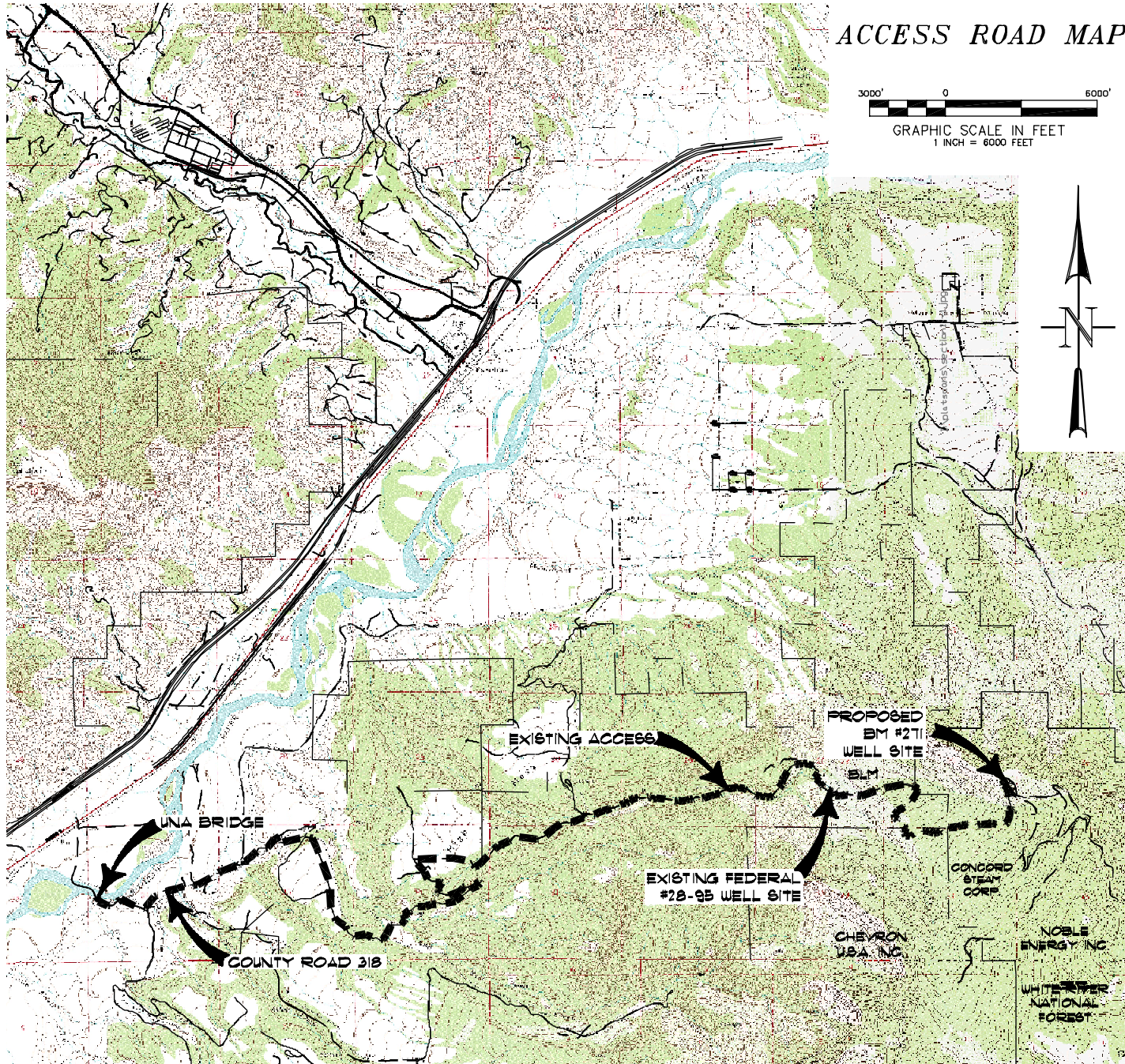
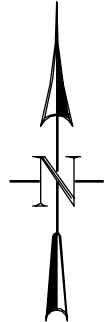
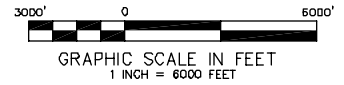


ACCESS ROAD MAP



ACCESS:

FROM THE UNA BRIDGE, PROCEED ALONG COUNTY ROAD 318 IN A GENERAL EAST/NORTHEAST DIRECTION ±1.2 MILES TO THE KLEBOLD/THROM GATE, PROCEED IN A GENERAL EASTERLY/SOUTHEASTERLY DIRECTION ON A PRIVATE DIRT/GRAVEL ROAD ±1.8 MILES TO THE APPROXIMATE BLM BOUNDARY, CONTINUE ON THE DIRT/GRAVEL ROAD THRU BLM IN A GENERAL NORTHERLY DIRECTION ±0.1 MILES TO THE APPROXIMATE TOM BROWN, INC BOUNDARY, CONTINUE ON THE DIRT/GRAVEL ROAD THRU TOM BROWN, INC PROPERTY IN A GENERAL NORTHEASTERLY/NORTHWESTERLY DIRECTION ±1.6 MILES TO AN INTERSECTION WITH A DIRT/GRAVEL ROAD ON THE RIGHT, PROCEED RIGHT IN A GENERAL EASTERLY DIRECTION THRU TOM BROWN, INC PROPERTY ±0.6 MILES TO THE APPROXIMATE BLM BOUNDARY, CONTINUE ON THE DIRT/GRAVEL ROAD IN A GENERAL EASTERLY DIRECTION THRU BLM PROPERTY ±3.1 MILES TO THE TOM BROWN, INC FEDERAL #28-95 WELL SITE, CONTINUE ALONG THE DIRT/GRAVEL ROAD IN A GENERAL EASTERLY DIRECTION ±2.3 MILES TO THE PROPOSED BM #271 WELL SITE, BEING THE LOCATION.



CONSTRUCTION SURVEYS, INC.
 0012 SUNRISE BLVD.
 SILT, CO 81652
 (970)876-5753

BM #271
 NE1/4 SE1/4 OF SECTION 27, T. 7 S., R. 95 W.
 NOBLE ENERGY INC.

SCALE: 1" = 6000'

SHEET 4 OF 10