

EnCana Oil & Gas (USA) INC.

T6S, R96W, 6th P.M.

Well location, N. PARACHUTE MF10A E09 696, located as shown in the SW 1/4 NW 1/4 of Section 9, T6S, R96W, 6th P.M., Garfield County, Colorado.

BASIS OF ELEVATION

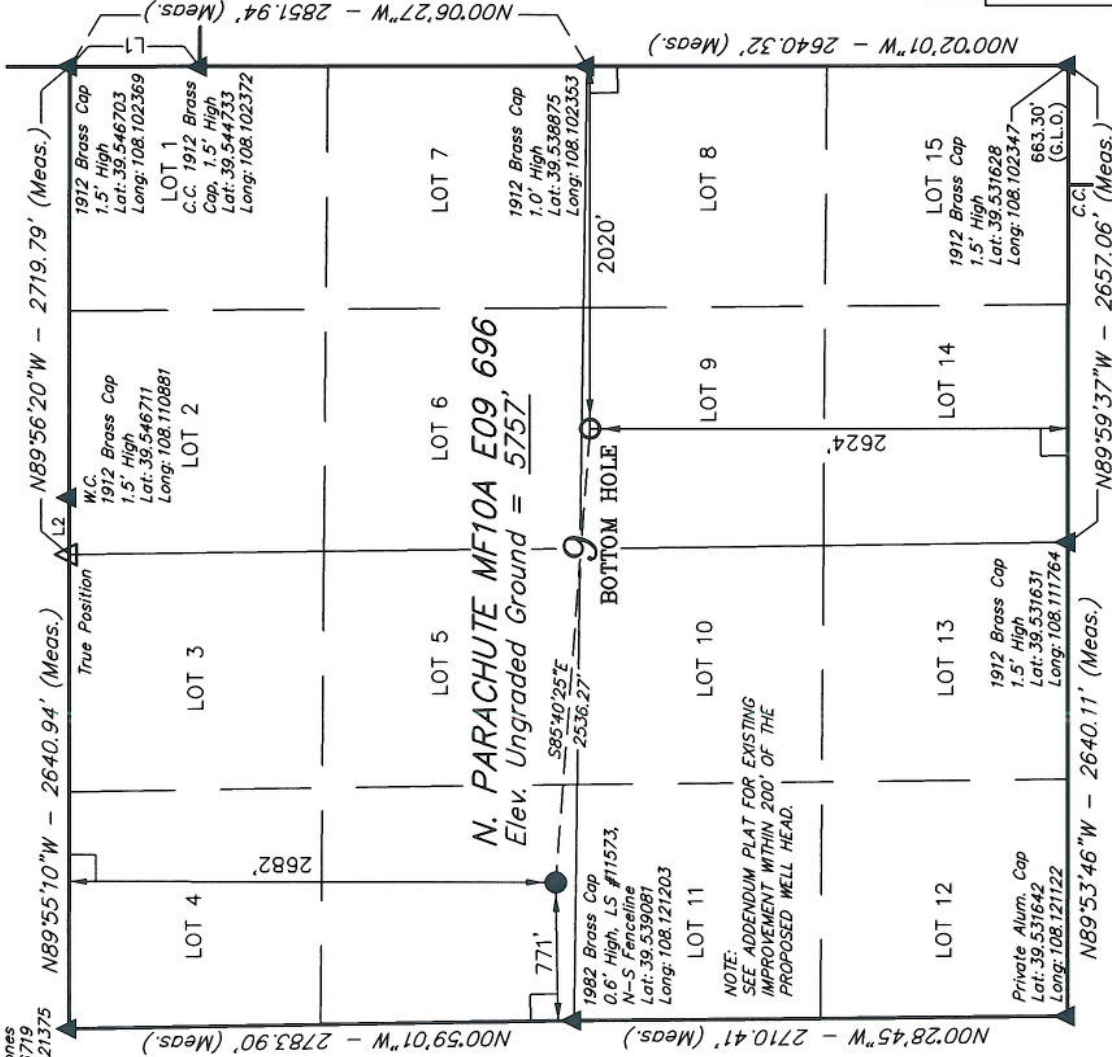
SPOT ELEVATION AT THE NORTHWEST CORNER OF SECTION 30, T5S, R95W, 6th P.M. TAKEN FROM THE FORKED GULCH QUADRANGLE, COLORADO, GARFIELD COUNTY, 7.5 MINUTE SERIES (TOPOGRAPHICAL MAP) PUBLISHED BY THE UNITED STATES DEPARTMENT OF THE INTERIOR, GEOLOGICAL SURVEY. SAID ELEVATION IS MARKED AS BEING 5966 FEET.

BASIS OF BEARINGS

BASIS OF BEARINGS IS A G.P.S. OBSERVATION.

LINE	BEARING	LENGTH
L1	N00°02'02"E	718.08'
L2	N89°55'10"W	319.44'

1912 Brass Cap, 0.4' High, E-W Fencing, Pile of Stones  
Lat: 39.546719  
Long: 108.121375



CERTIFICATE

THIS IS TO CERTIFY THAT THE ABOVE PLAT WAS PREPARED FROM FIELD NOTES OF ACTUAL SURVEYS MADE BY ME OR UNDER MY SUPERVISION AND THAT THE SAME ARE TRUE AND CORRECT TO THE BEST OF MY KNOWLEDGE AND BELIEF.

REGISTERED LAND SURVEYOR  
STATE OF COLORADO  
No. 17493

Revised: 12-24-08 D.R.B.  
Revised: 06-11-07 D.R.B.

UNTAH ENGINEERING & LAND SURVEYING  
85 SOUTH 200 EAST - VERNAL, UTAH 84078  
(435) 789-1017

LEGEND:

- = 90° SYMBOL
- = PROPOSED WELL HEAD.
- ▲ = SECTION CORNERS LOCATED.

SCALE 1" = 1000'	DATE SURVEYED: 09-18-06	DATE DRAWN: 10-23-06
PARTY B.H. F.Y. D.R.B.	REFERENCES G.L.O. PLAT	
WEATHER COOL	FILE	
		EnCana OIL & GAS (USA) INC.