

Company	XTO Energy, Inc.	Company	XTO Energy, Inc.
Well	Apache Canyon 13-07	Well	Apache Canyon 13-07
Field	Purgatoire River	Field	Purgatoire River
County	Las Animas	County	Las Animas
State	CO	State	CO
Location:	API # : 05 071 08885 00	Other Services	DIL
Permanent Datum	2219' FNL & 1943' FEL	Elevation	8234'
Log Measured From	SEC 13 TWP 34S RGE 68W	K.B. -----	
Drilling Measured From	Ground Level	D.F. -----	
	Ground Level	G.L. 8234'	
Date	8-14-06		
Run Number	Two		
Depth Driller	2430'		
Depth Logger	2416'		
Bottom Logged Interval	2414'		
Top Log Interval	Surface Casing		
Casing Driller	8 5/8" @ 221'		
Casing Logger	220'		
Bit Size	7 7/8"		
Type Fluid in Hole	Water		
Density / Viscosity	///		
pH / Fluid Loss	///		
Source of Sample	///		
Rm @ Meas. Temp	///		
Rmf @ Meas. Temp	///		
Rmc @ Meas. Temp	///		
Source of Rmf / Rmc	///		
Rm @ BHT	///		
Time Circulation Stopped	7:00 A.M.		
Time Logger on Bottom	9:30 A.M.		
Maximum Recorded Temperature	108 DEG F		
Equipment Number	T720		
Location	Trinidad		
Recorded By	M. Norton		
Witnessed By	Mr. Don Johnson		

<<< Fold Here >>>

All interpretations are opinions based on inferences from electrical or other measurements and we cannot and do not guarantee the accuracy or correctness of any interpretation, and we shall not, except in the case of gross or willful negligence on our part, be liable or responsible for any loss, costs, damages, or expenses incurred or sustained by anyone resulting from any interpretation made by any of our officers, agents or employees. These interpretations are also subject to our general terms and conditions set out in our current Price Schedule.

### Comments

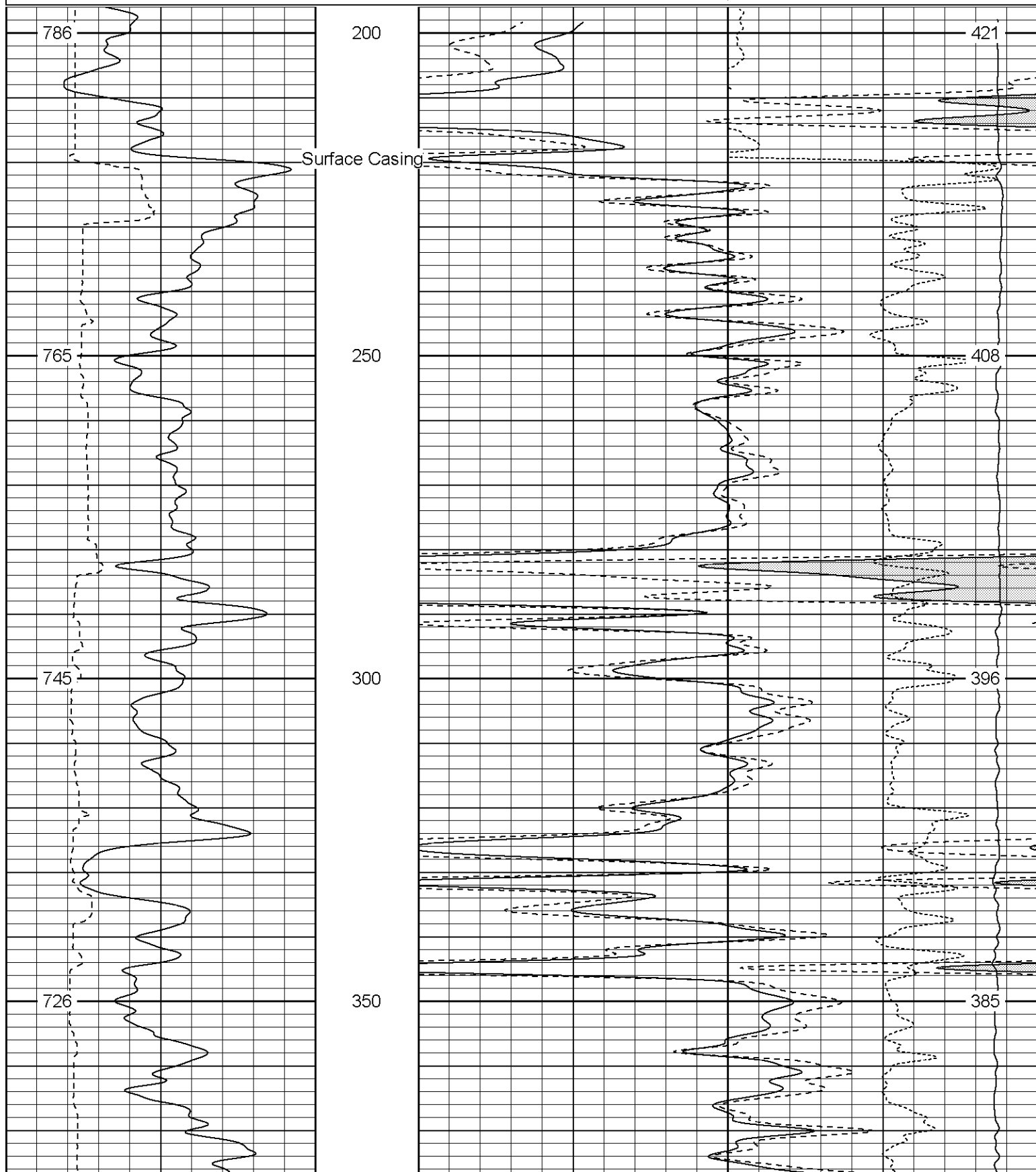
Neutron Density Porosity Presented On Sandstone Matrix.  
ABHV Calculated For 5 1/2" Casing.

Well Directions:

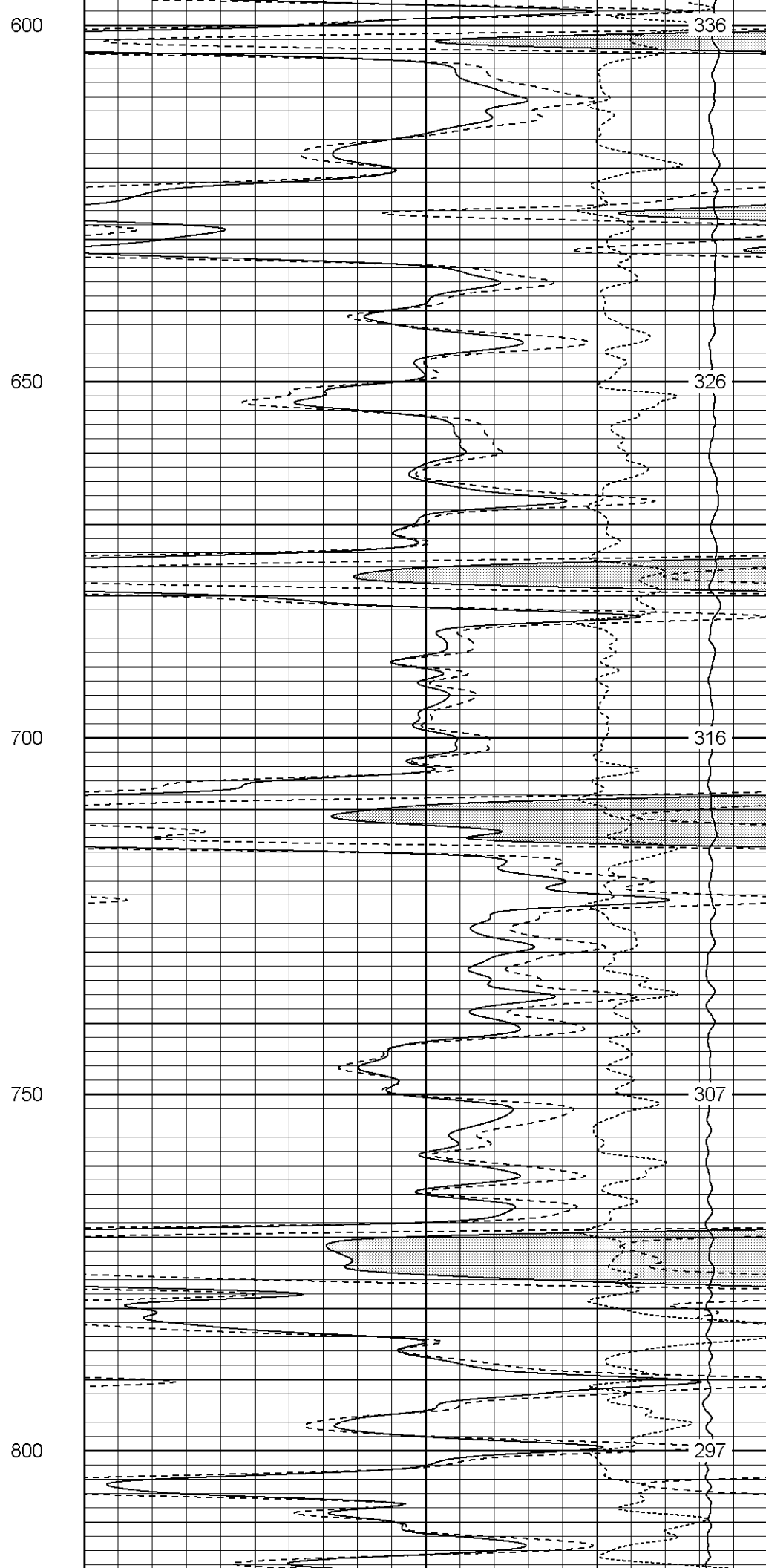
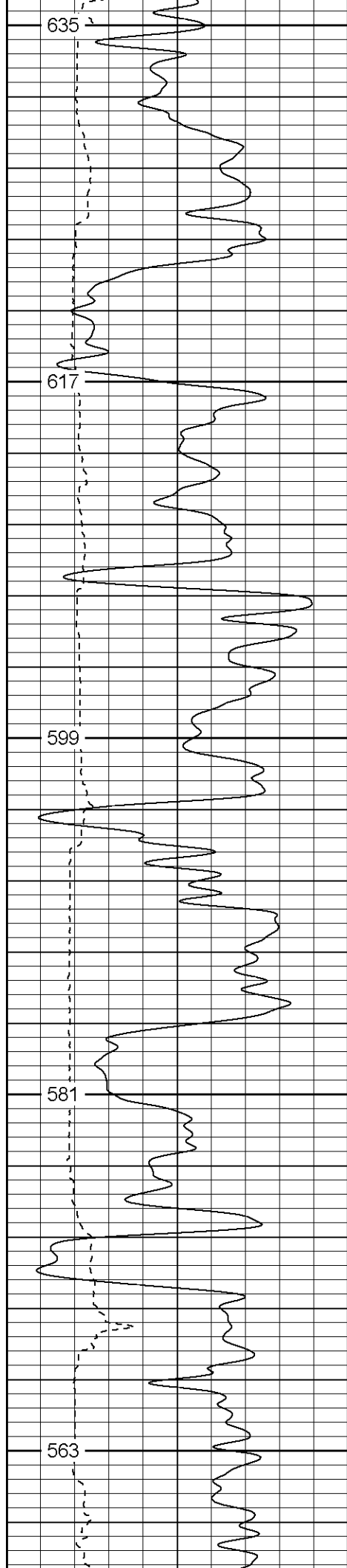
First Bosque entrance, right on Big Bingham, to the end past jeep trail,  
stay straight thru single yellow gate, stay left, at top of hill at drive thru location, stay right to location.

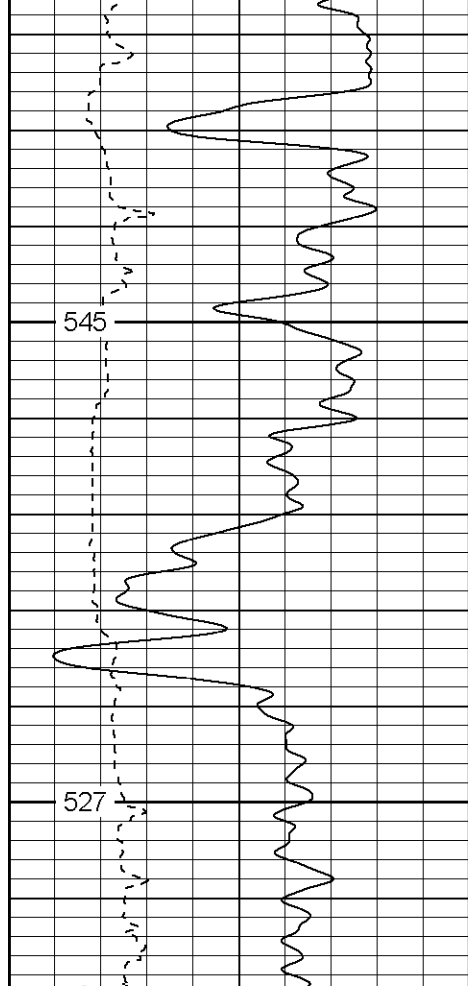
Database File: xtoac1307.db  
Dataset Pathname: pass4.1  
Presentation Format: cdl  
Dataset Creation: Mon Aug 14 11:22:14 2006 by Calc Warrior 7.0 STD Ope  
Charted by: Depth in Feet scaled 1:240

0	GR (GAPI)	200	1	RHOB (g/cc)	2
6	DCAL (in)	16	30	DPOR (pu)	-10
			-0.5	RHOC (g/cc)	0.5
			4000	LTEN (lb)	0



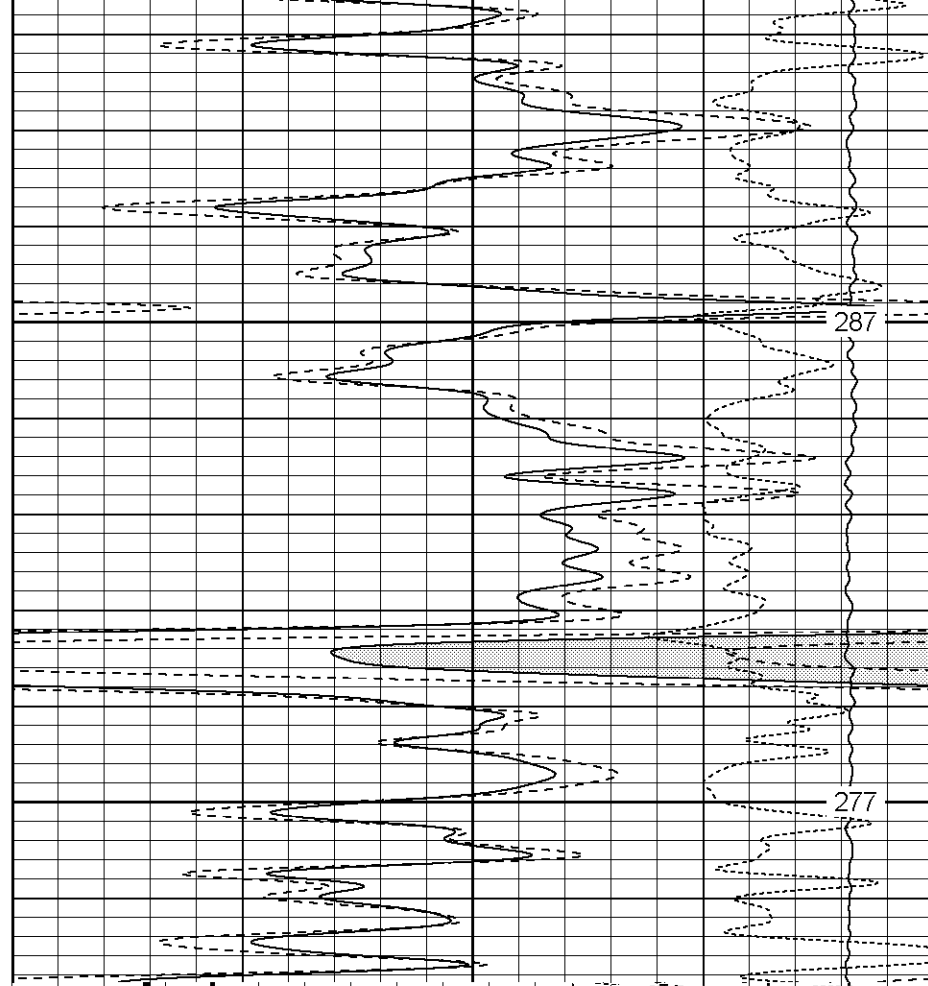


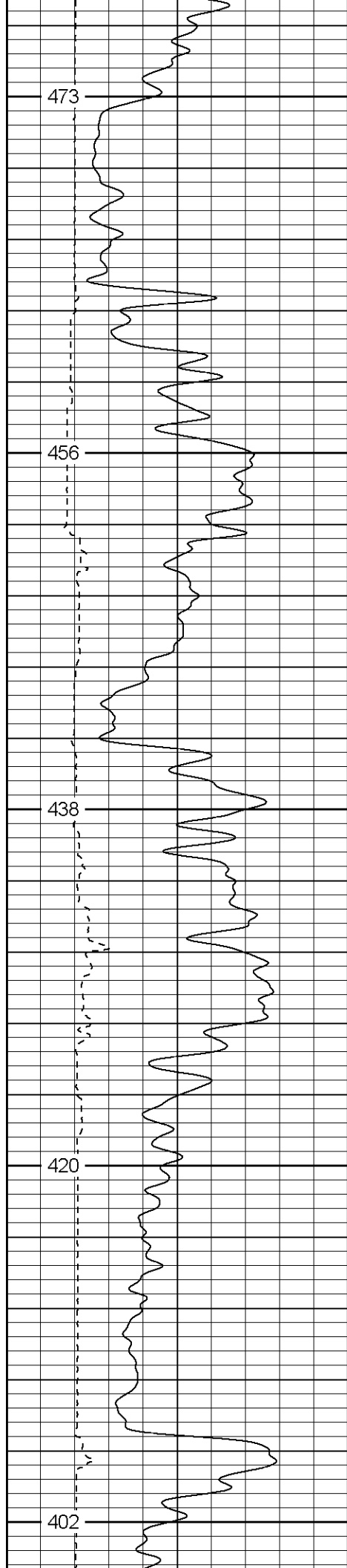




850

900





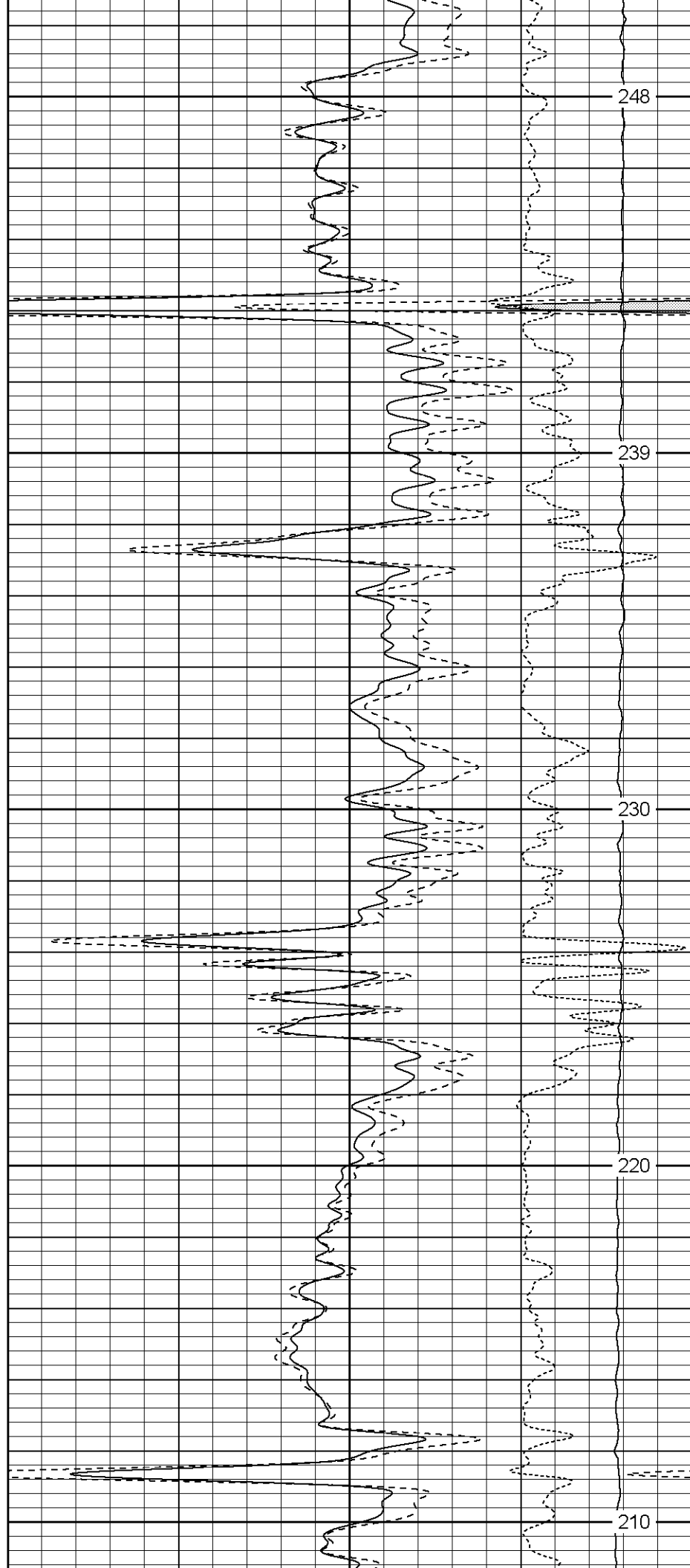
1050

1100

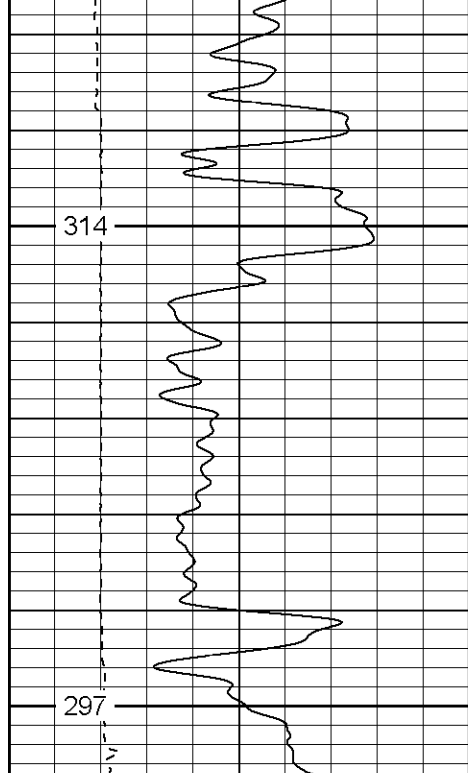
1150

1200

1250

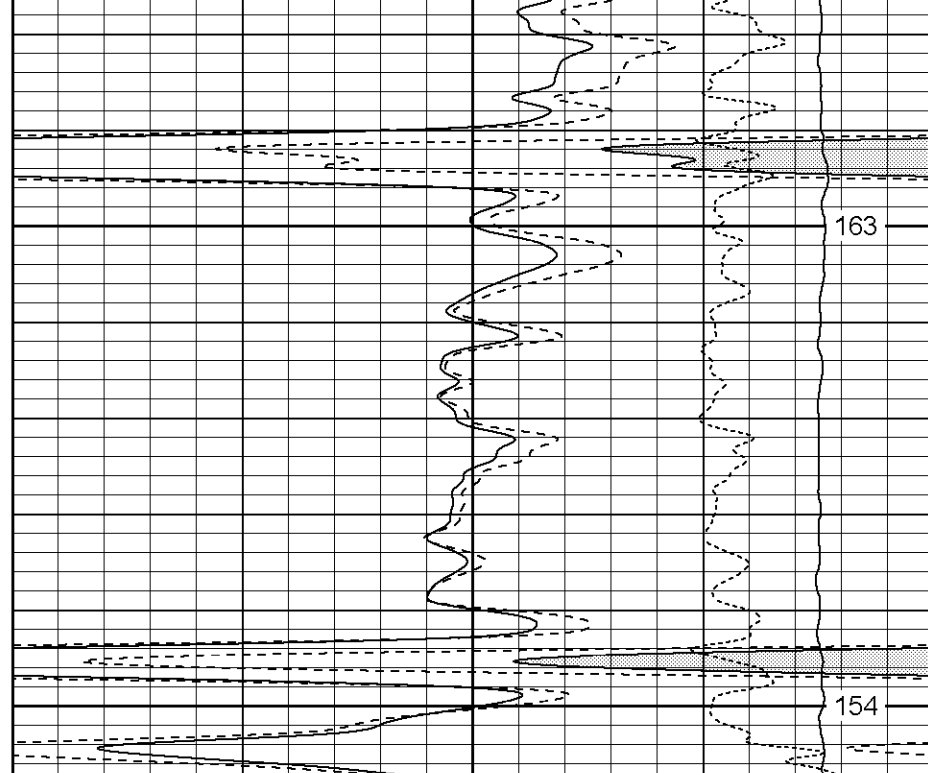




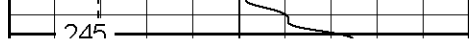


1500

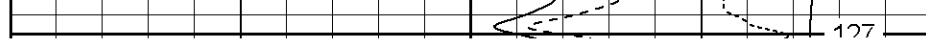
1550

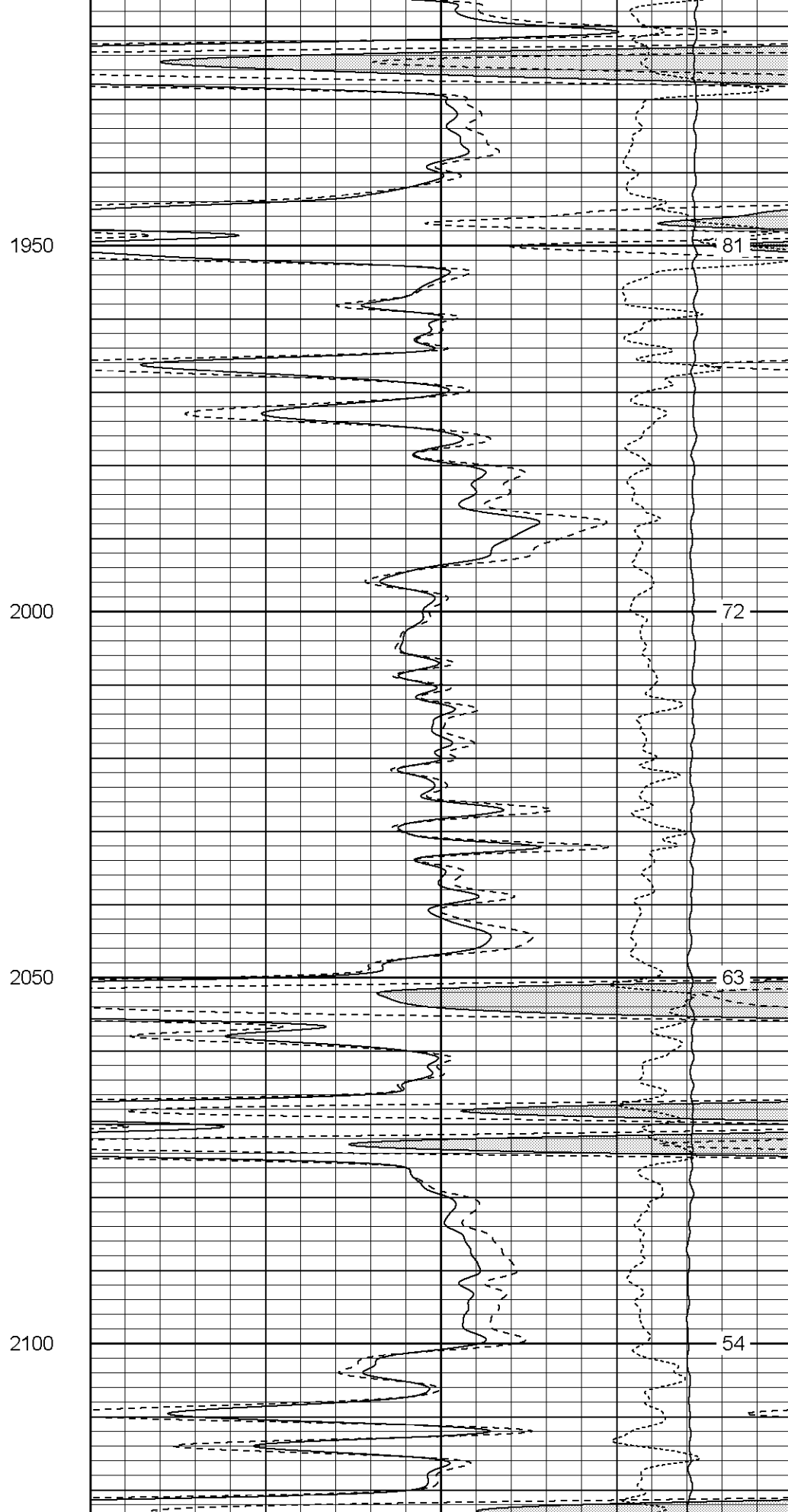
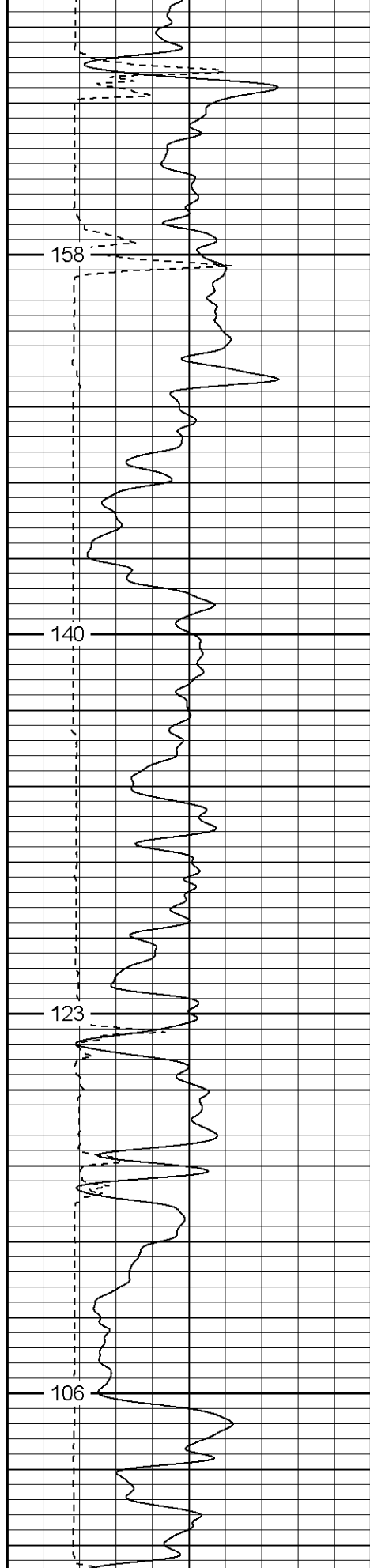


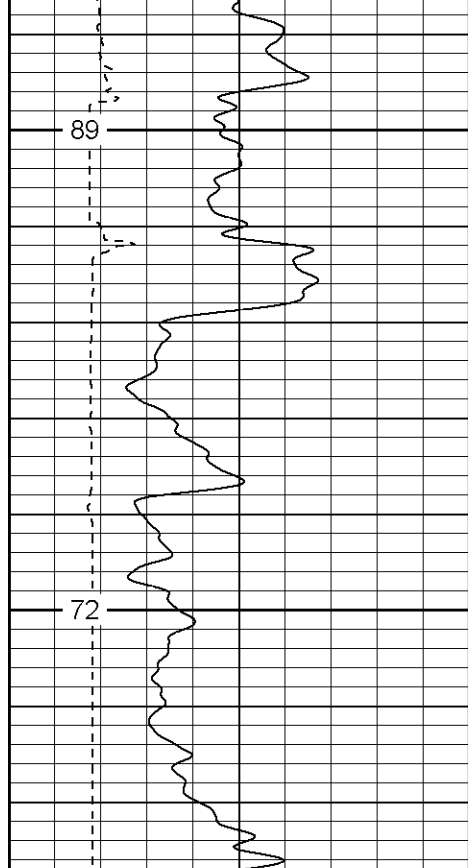




1700

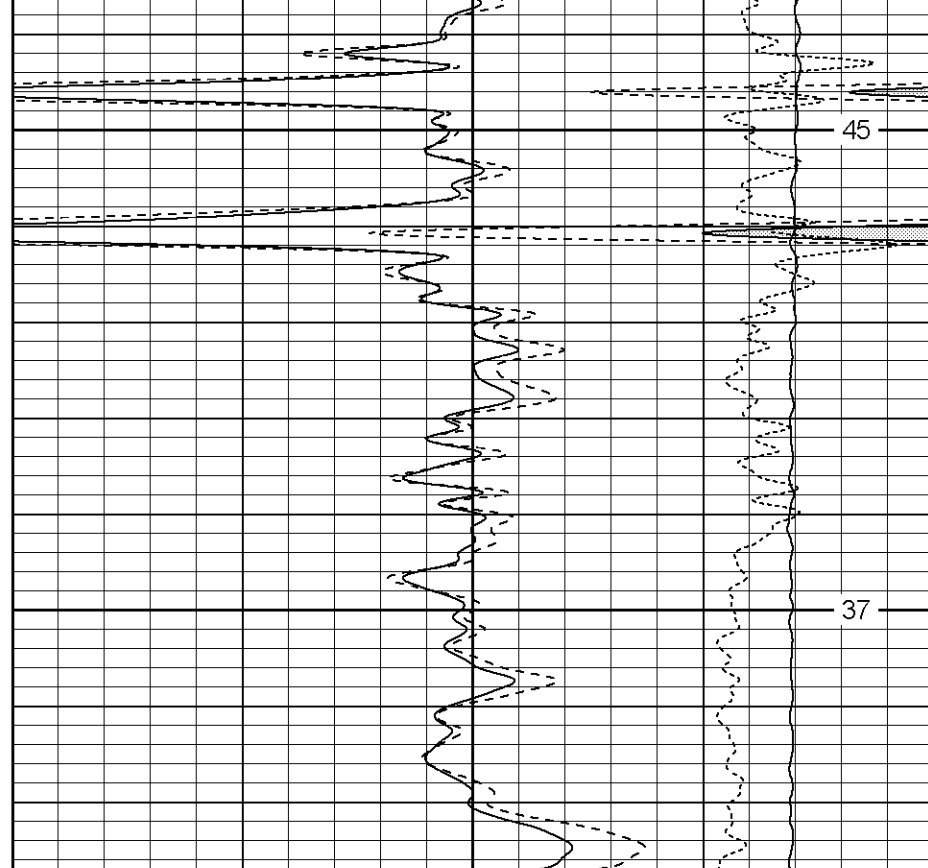


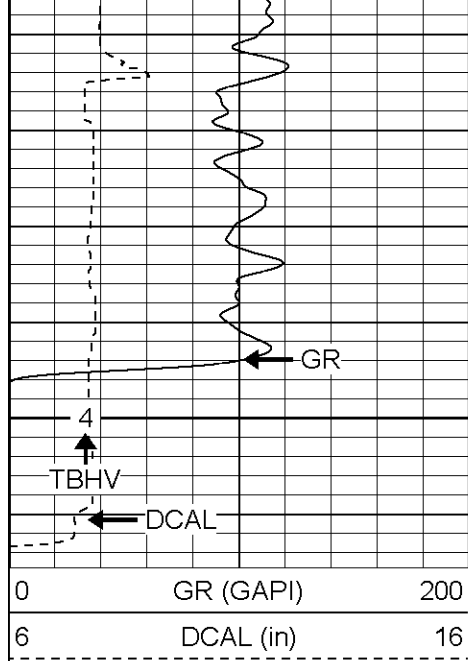




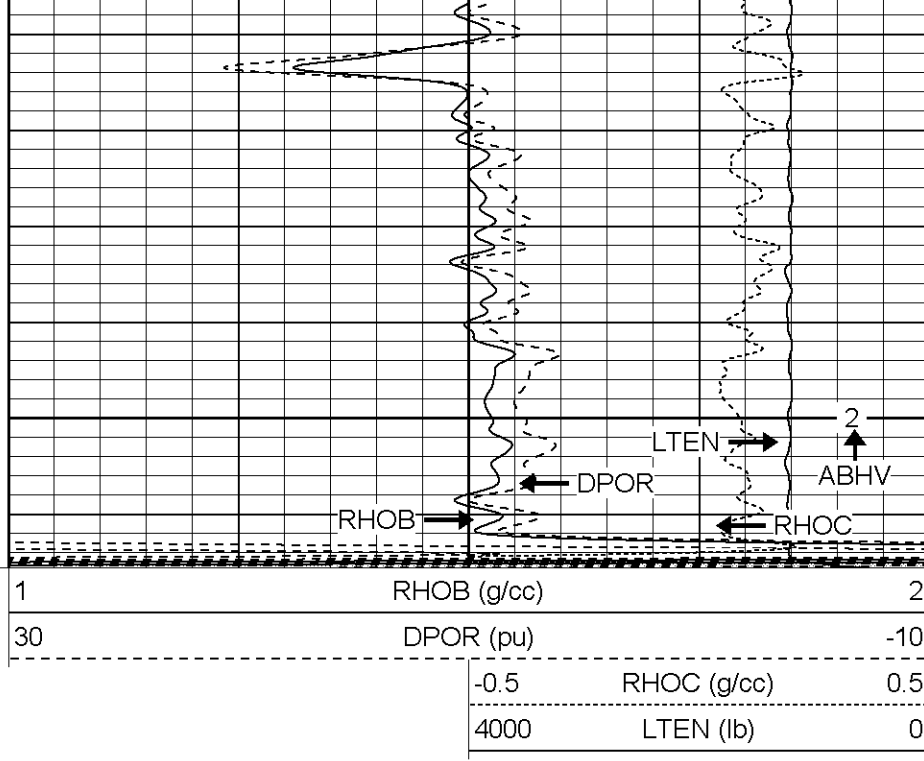
2150

2200





2400

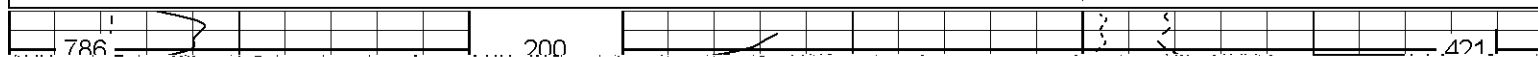


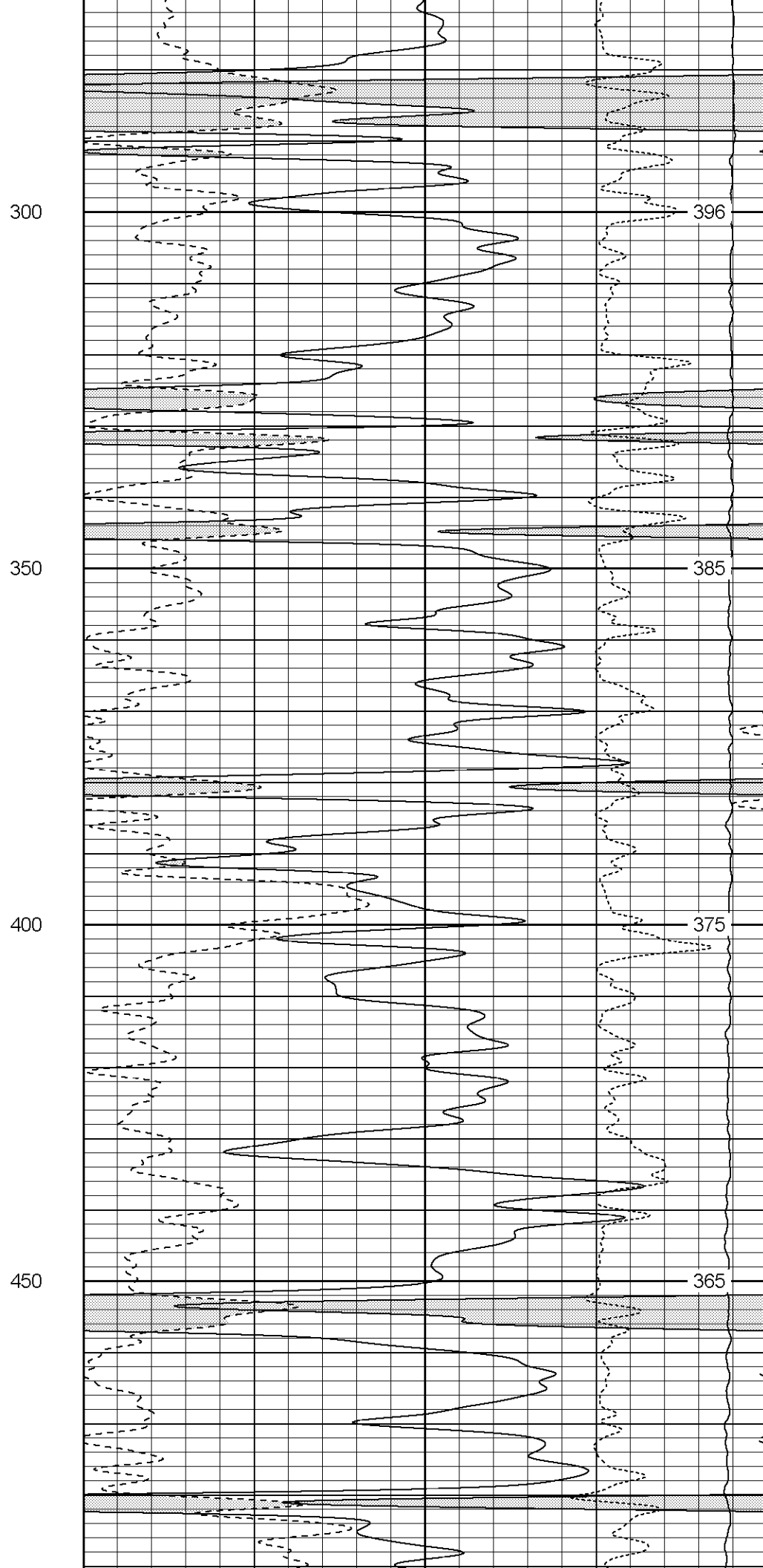
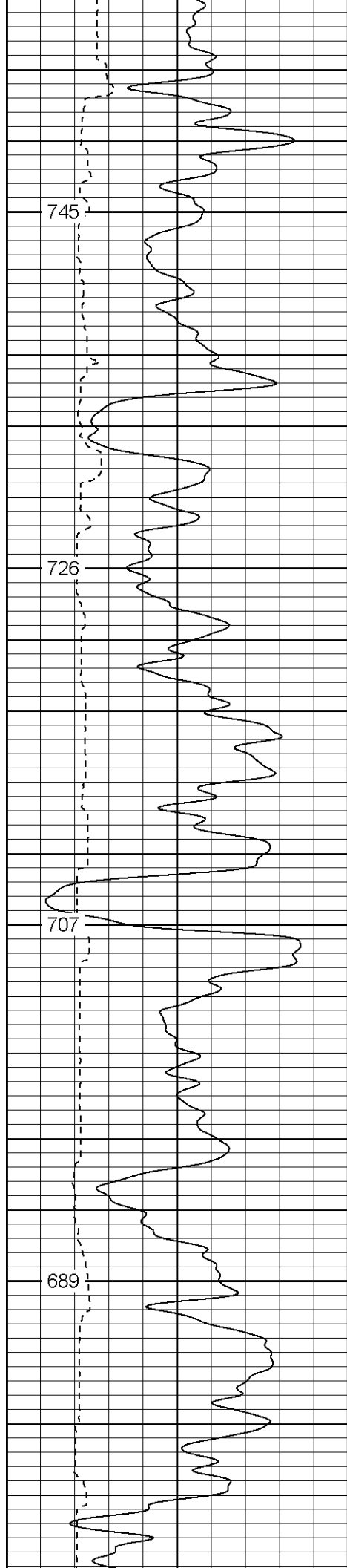
**Patterson**

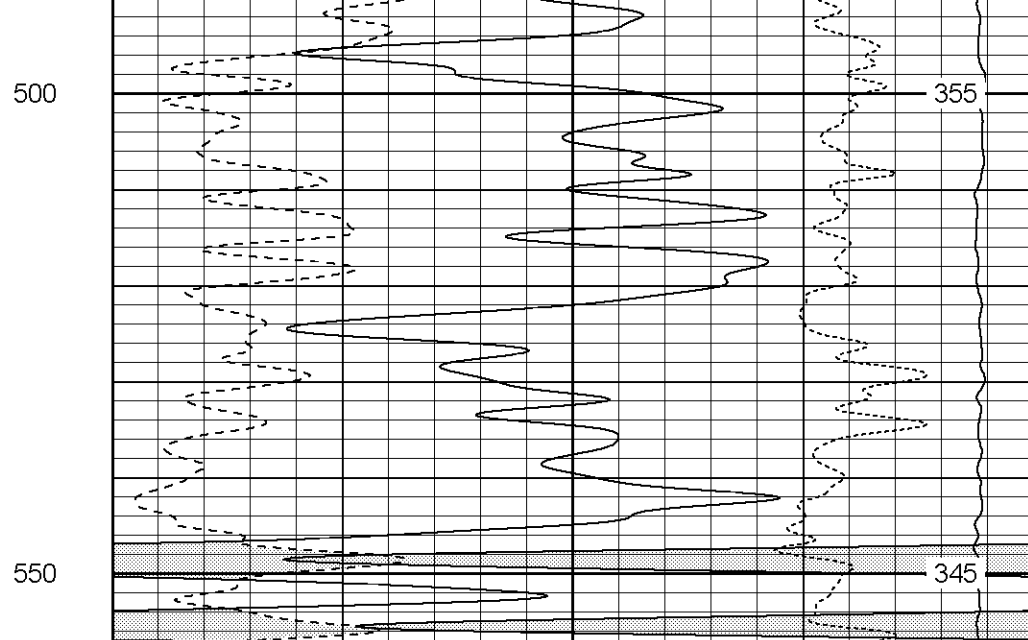
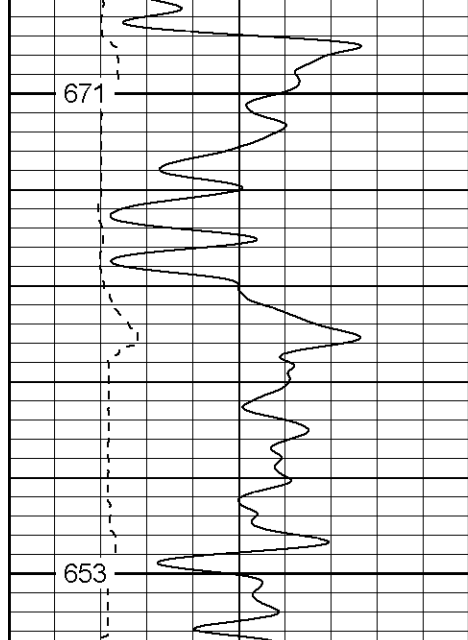
**Main Pass**

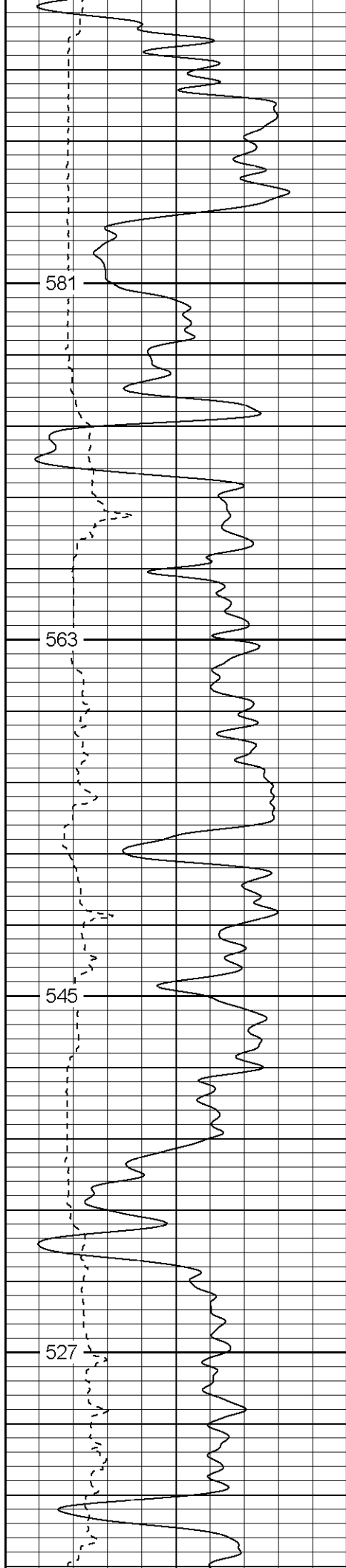
Database File: xtoac1307.db  
 Dataset Pathname: pass4.1  
 Presentation Format: cdnl  
 Dataset Creation: Mon Aug 14 11:22:14 2006 by Calc Warrior 7.0 STD Ope  
 Charted by: Depth in Feet scaled 1:240

0	GR (GAPI)	200		30	NPOR (pu)	-10	
6	DCAL (in)	16		30	DPOR (pu)	-10	
					-0.5	RHOC (g/cc)	0.5
					5000	LTEN (lb)	0







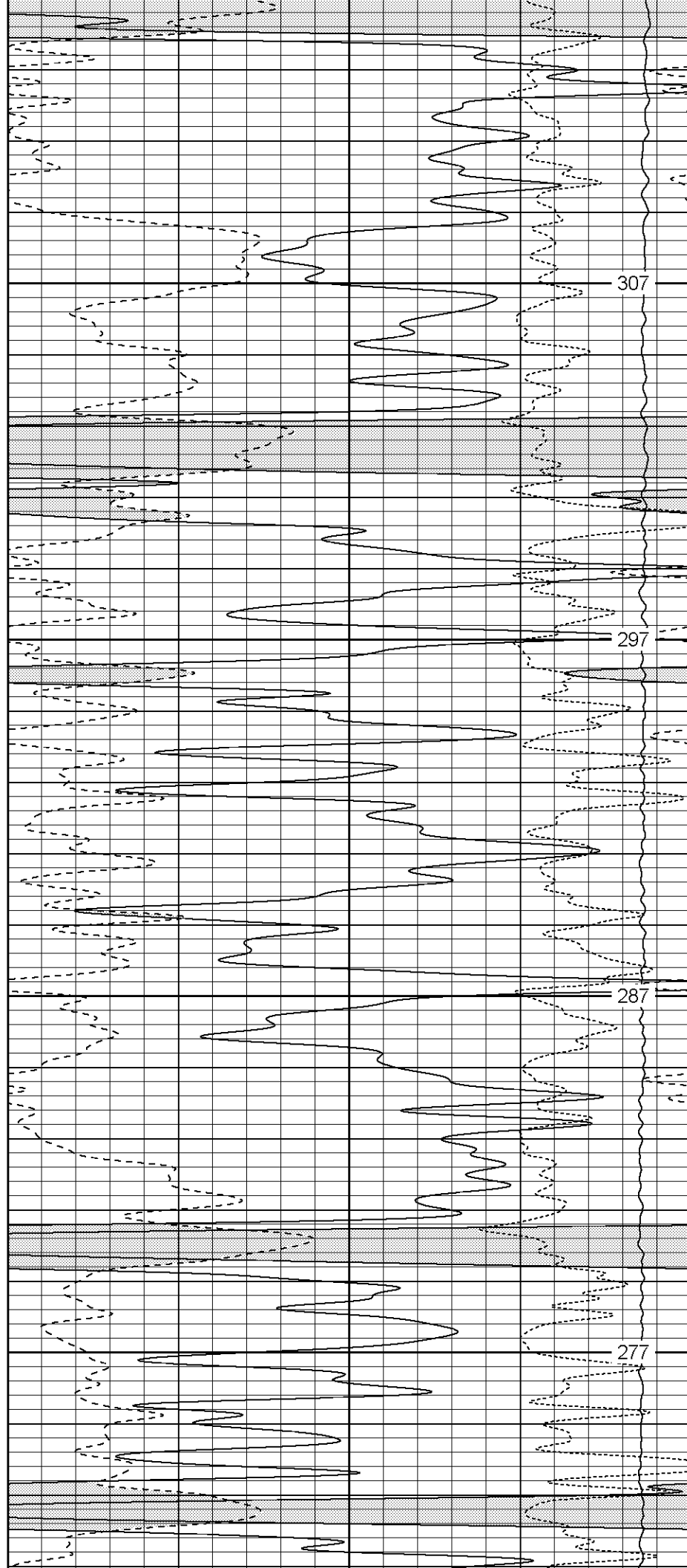


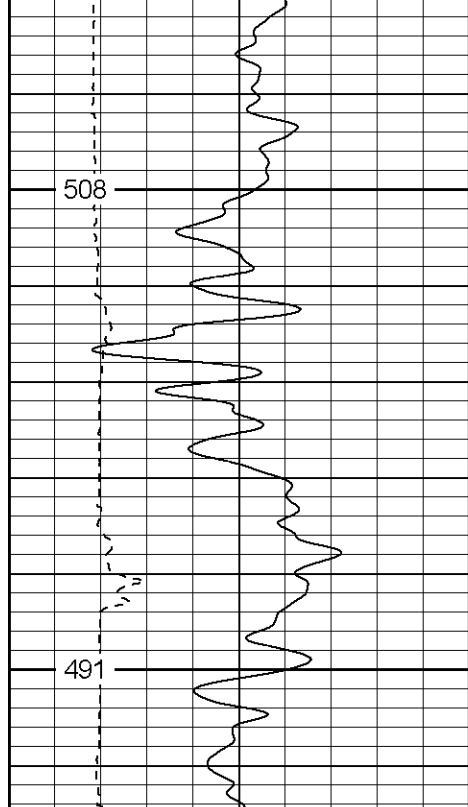
750

800

850

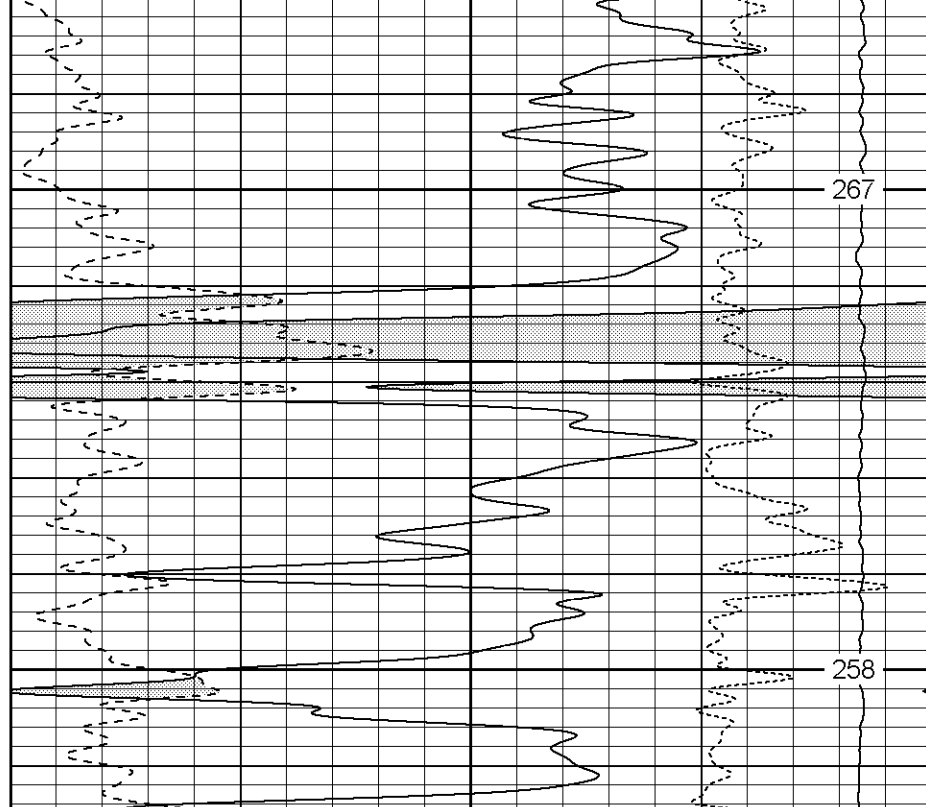
900



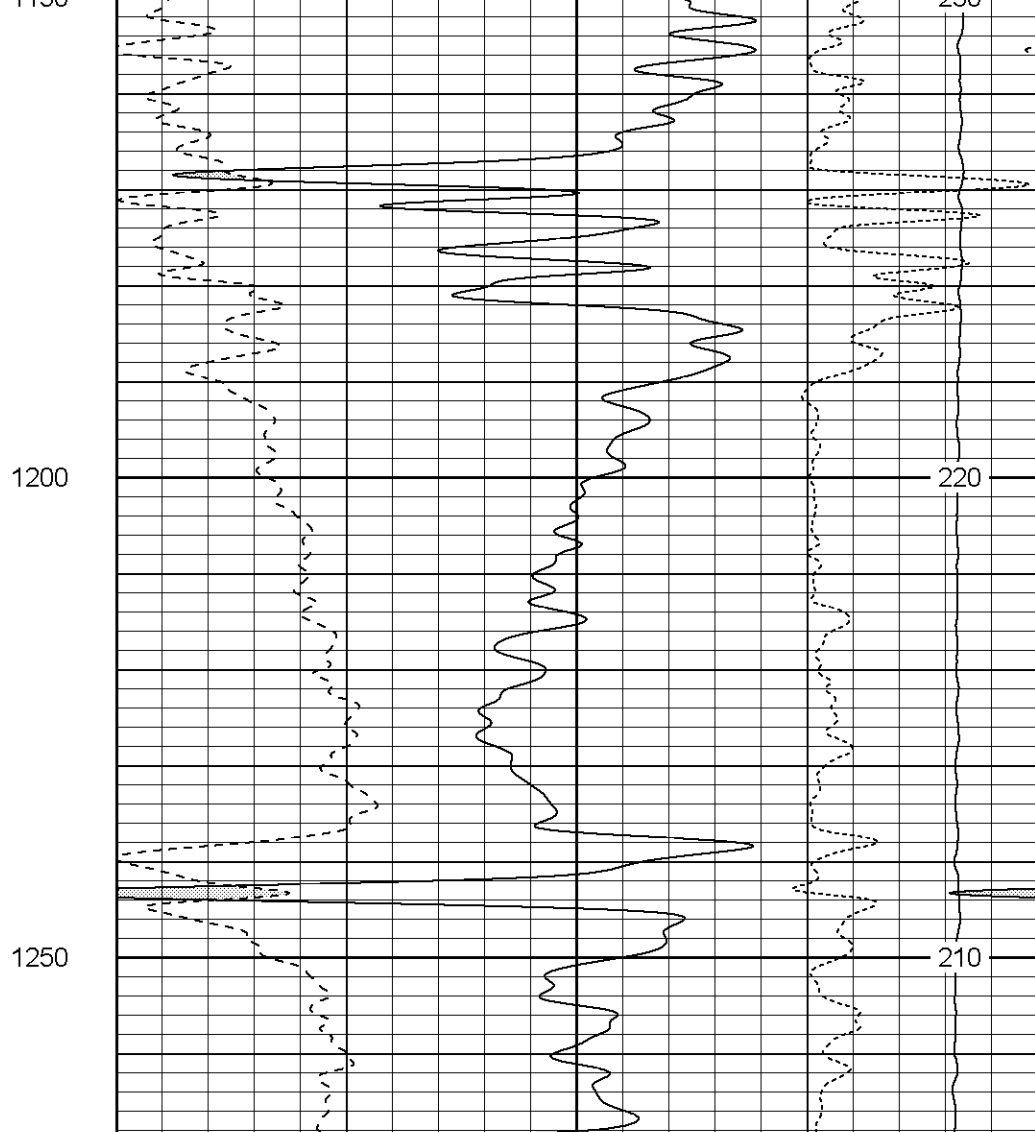
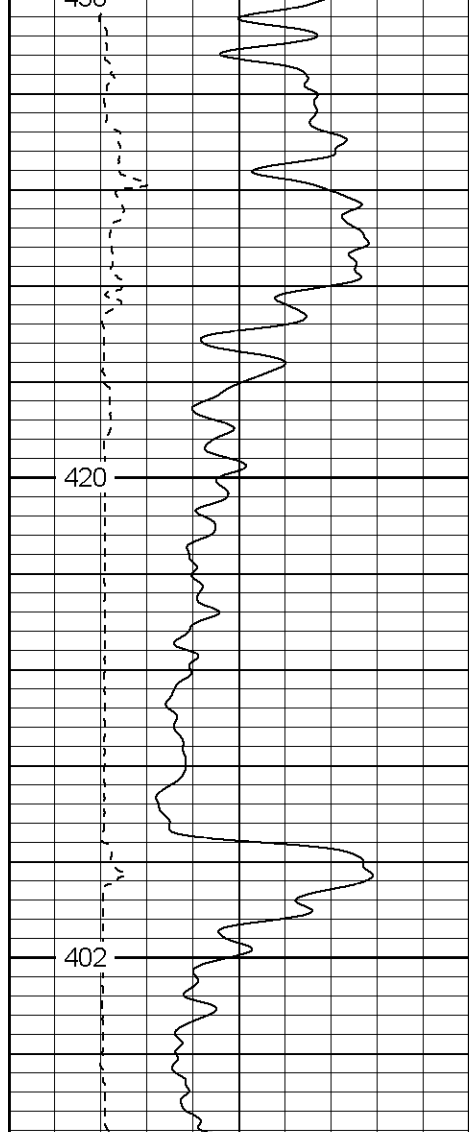


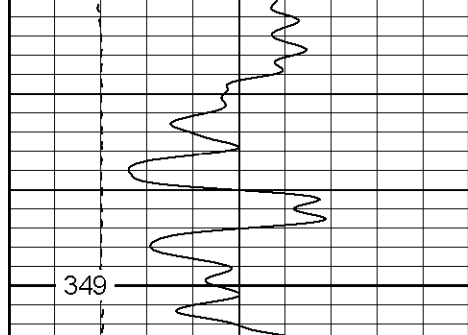
950

1000

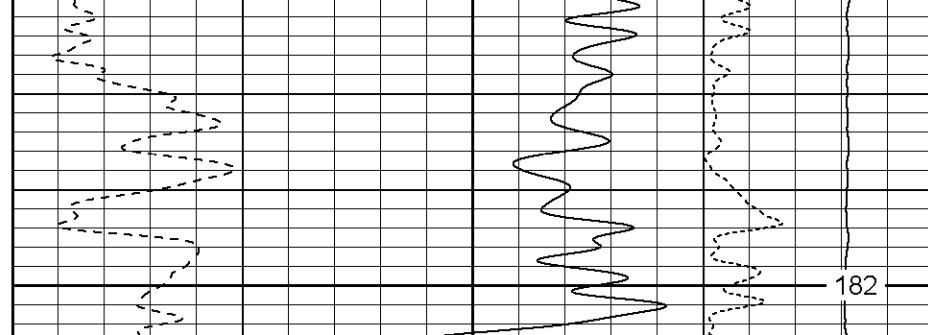


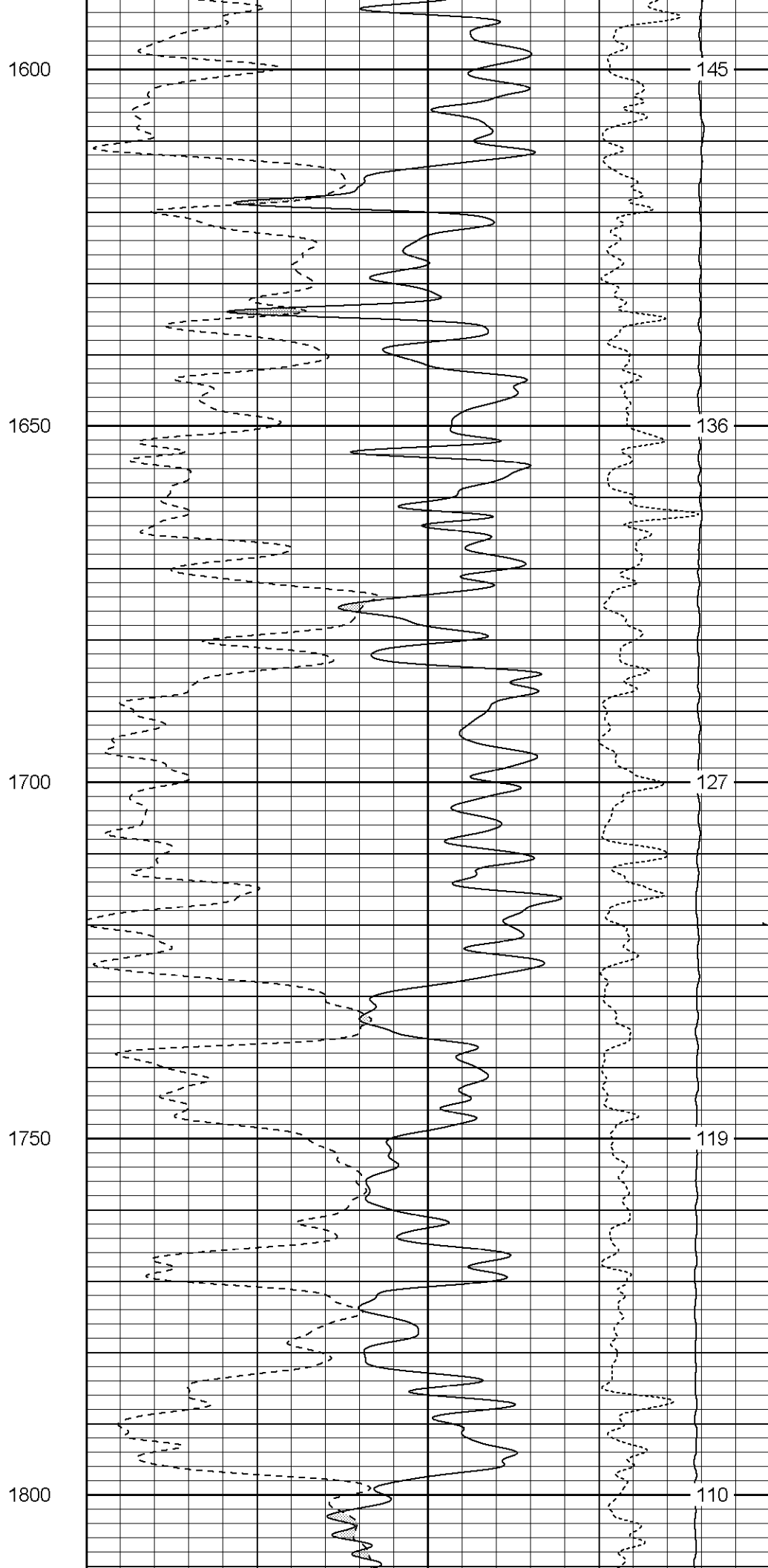
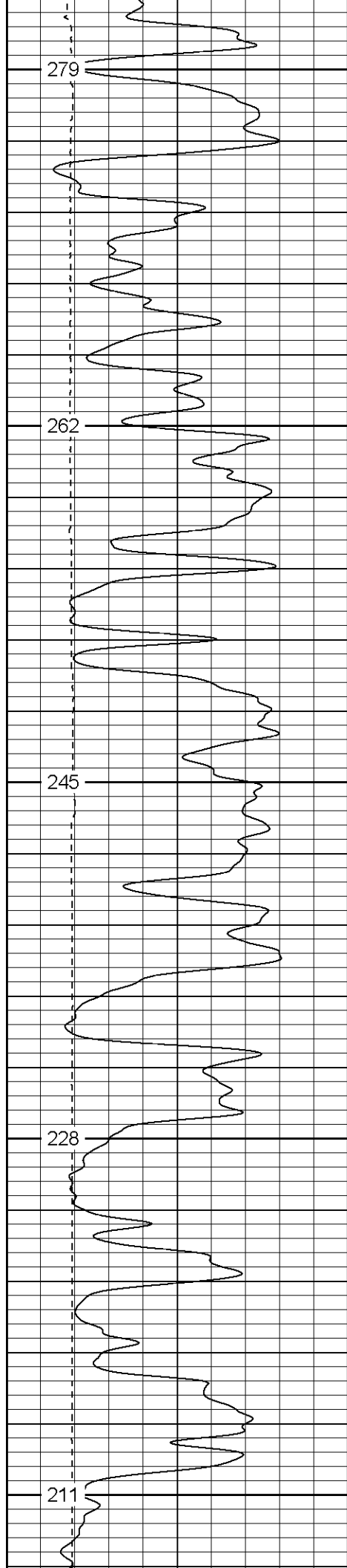


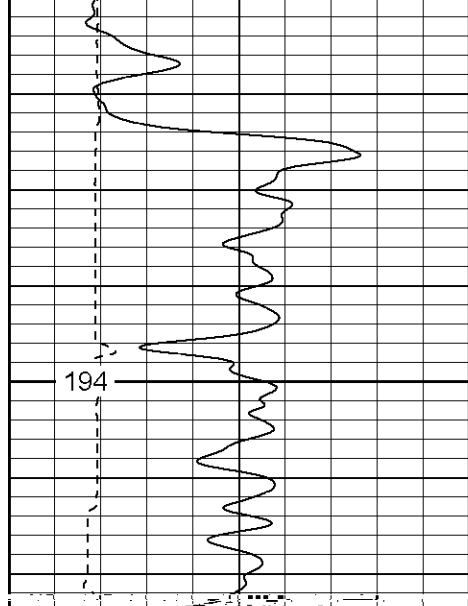




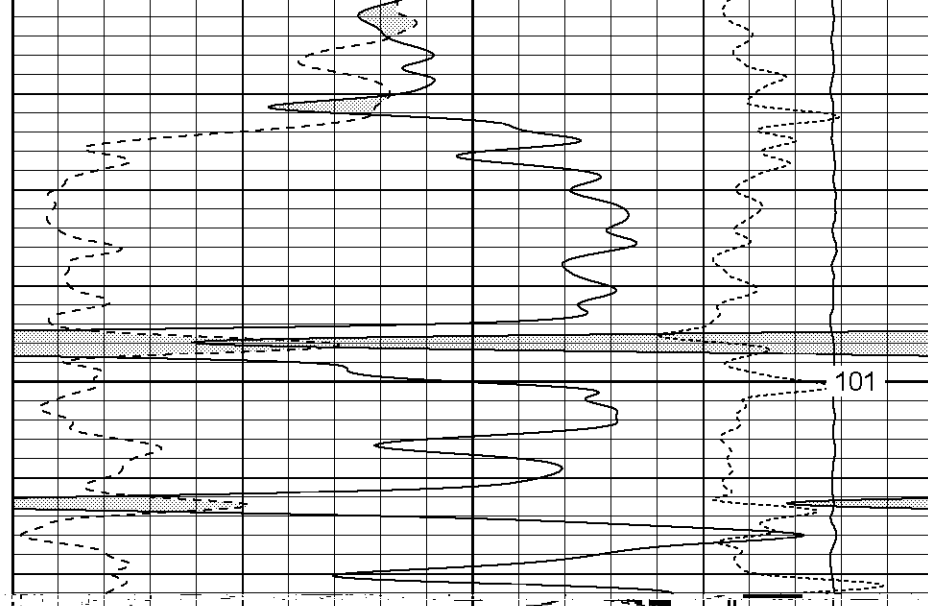
1400

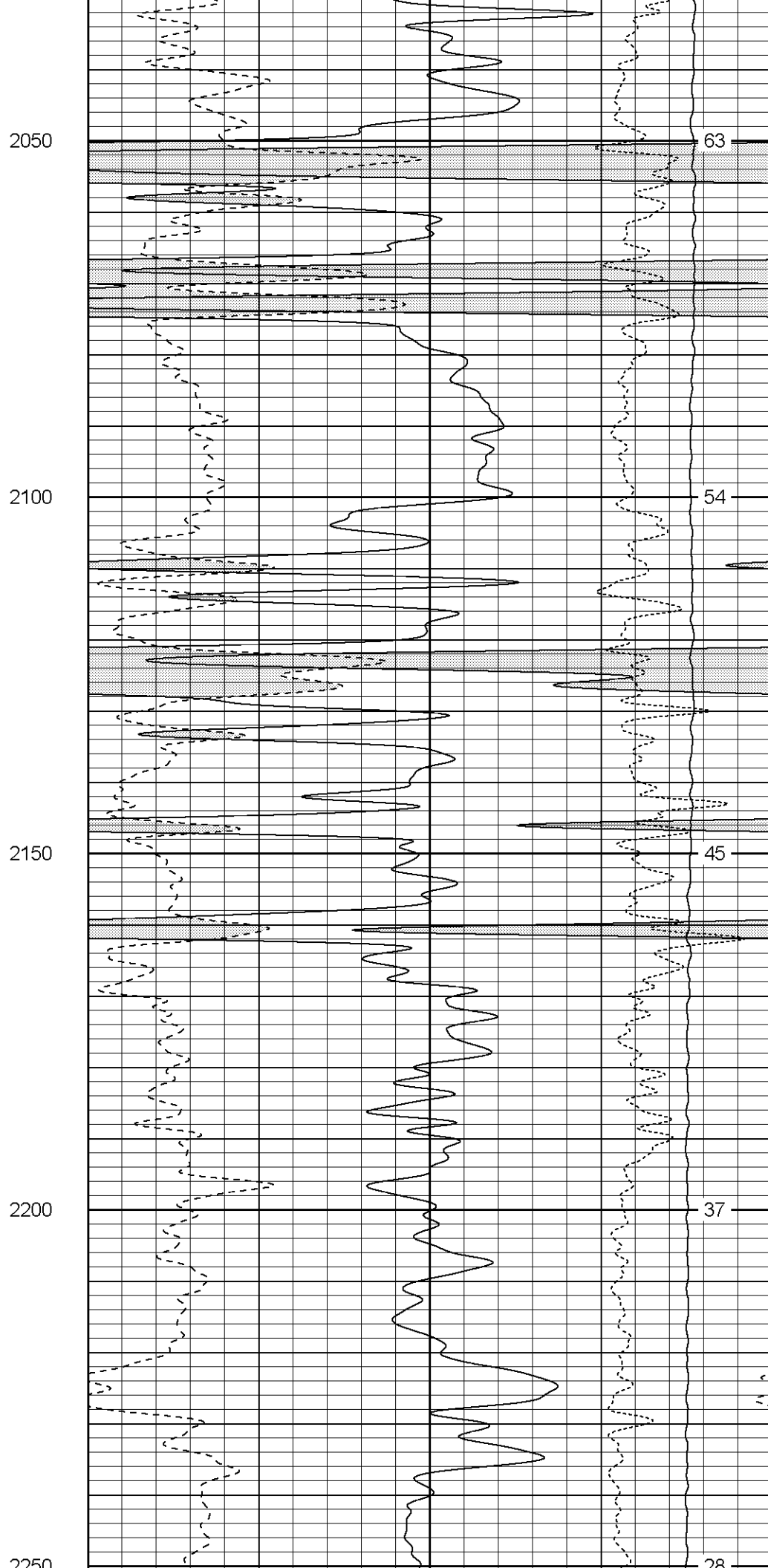
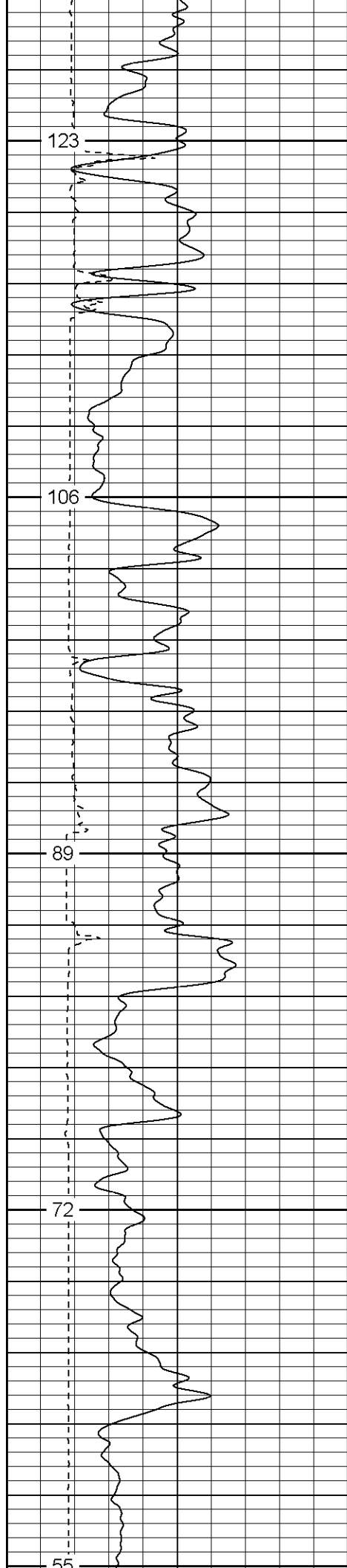


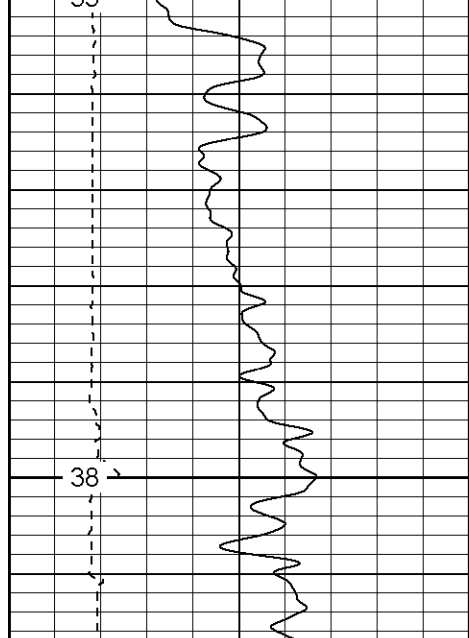




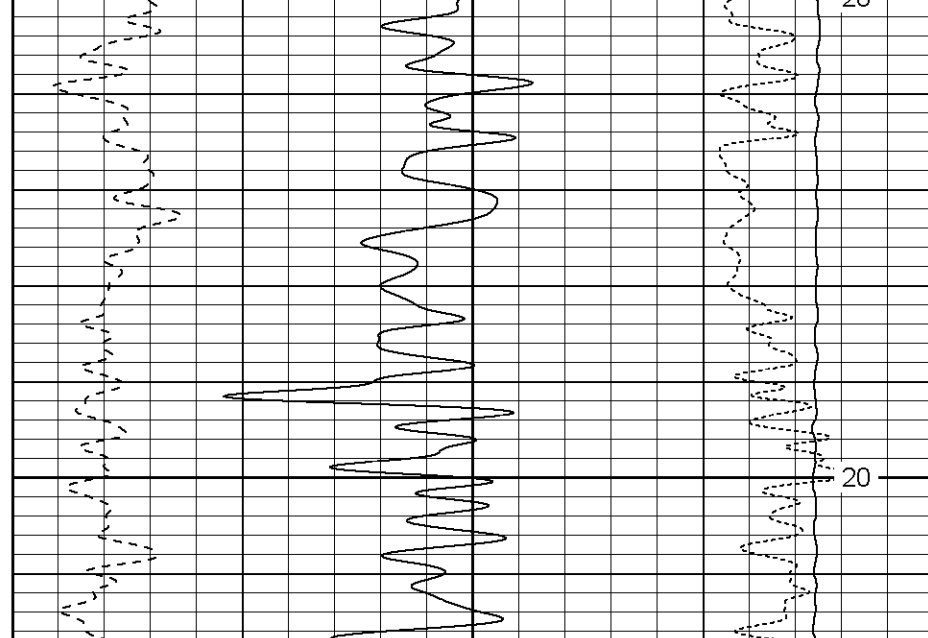
1850





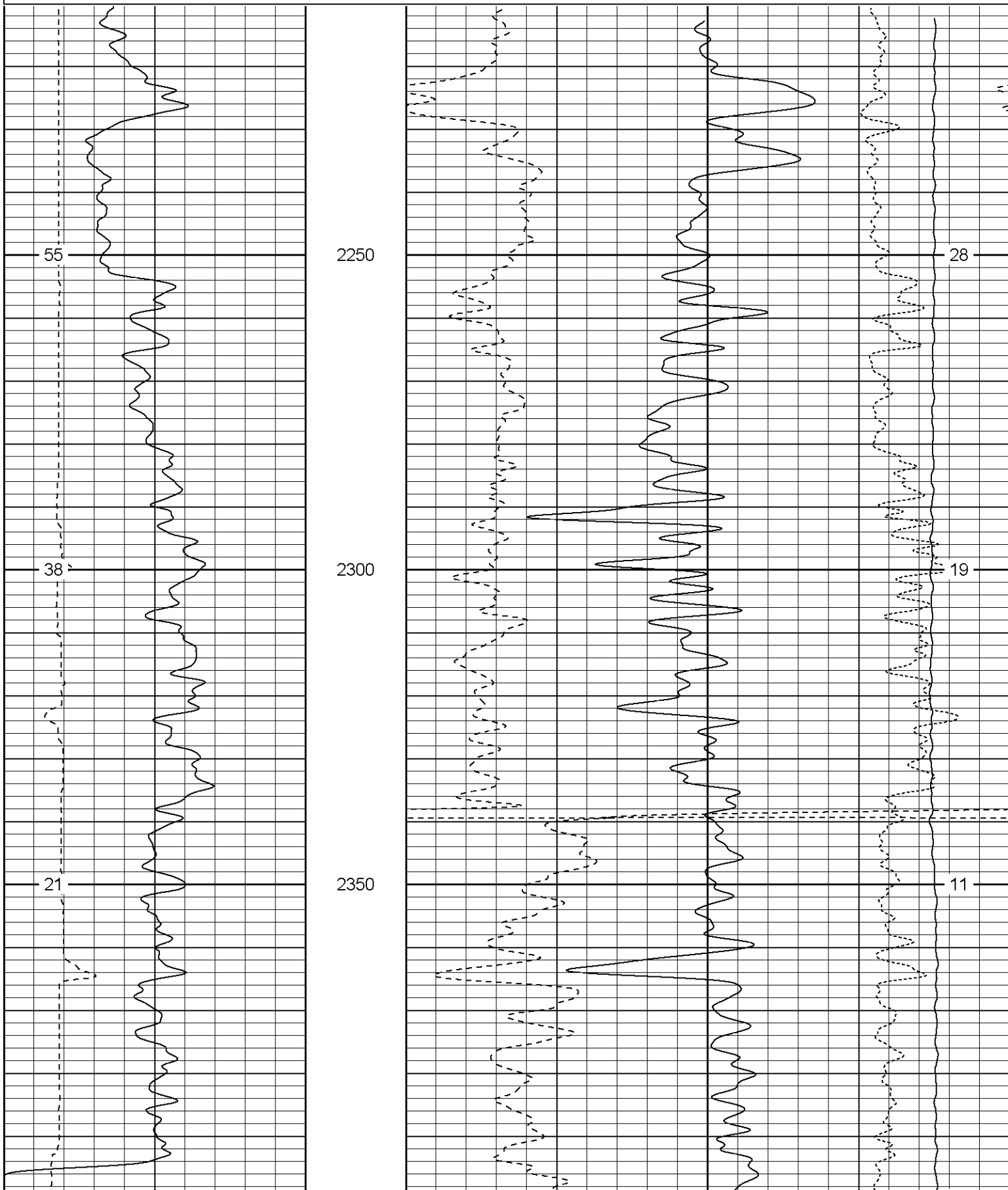


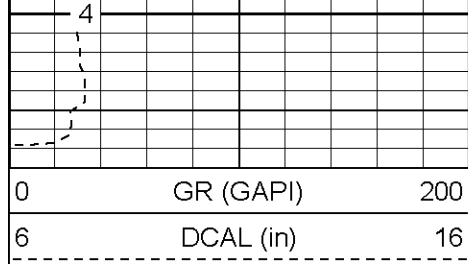
2250  
2300



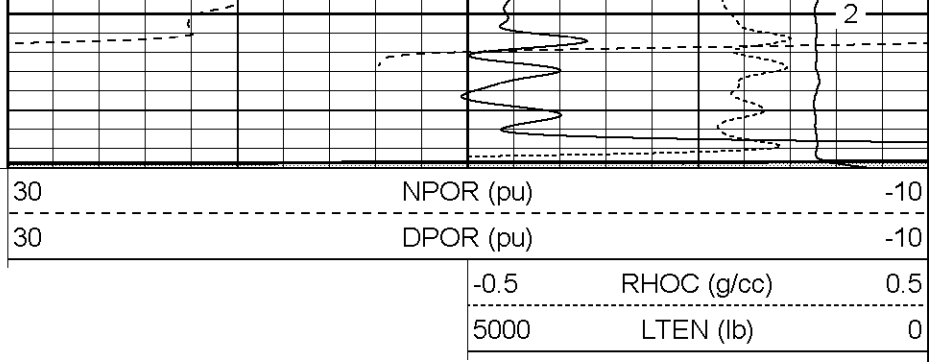
2250  
2300

0	GR (GAPI)	200	30	NPOR (pu)	-10
6	DCAL (in)	16	30	DPOR (pu)	-10
			-0.5	RHOC (g/cc)	0.5
			5000	LTEN (lb)	0





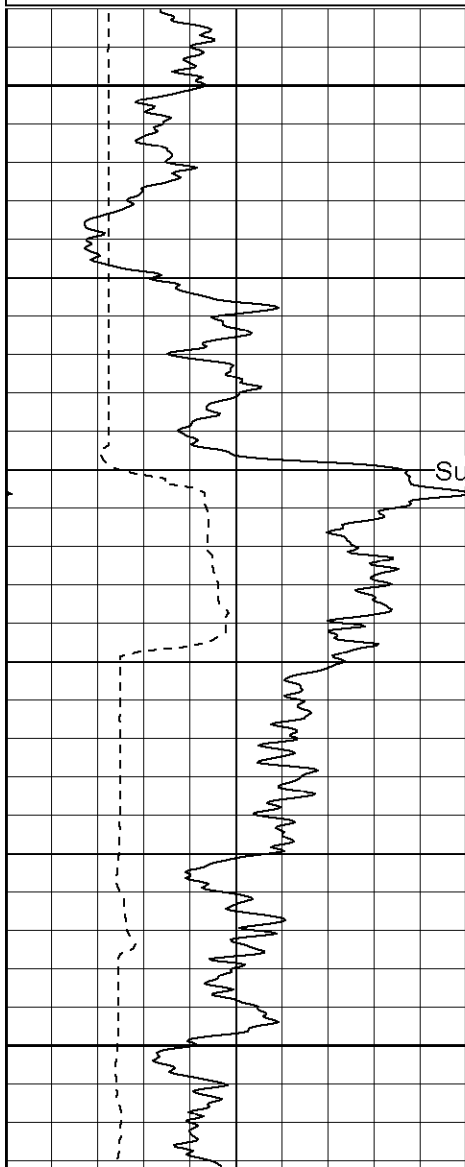
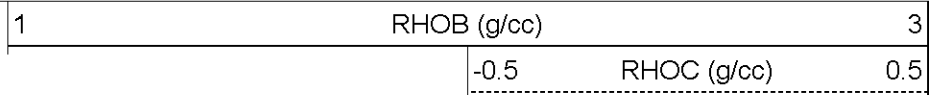
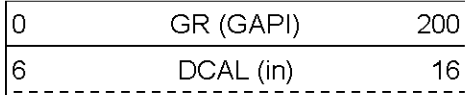
2400



**Patterson**

# High Resolution Pass

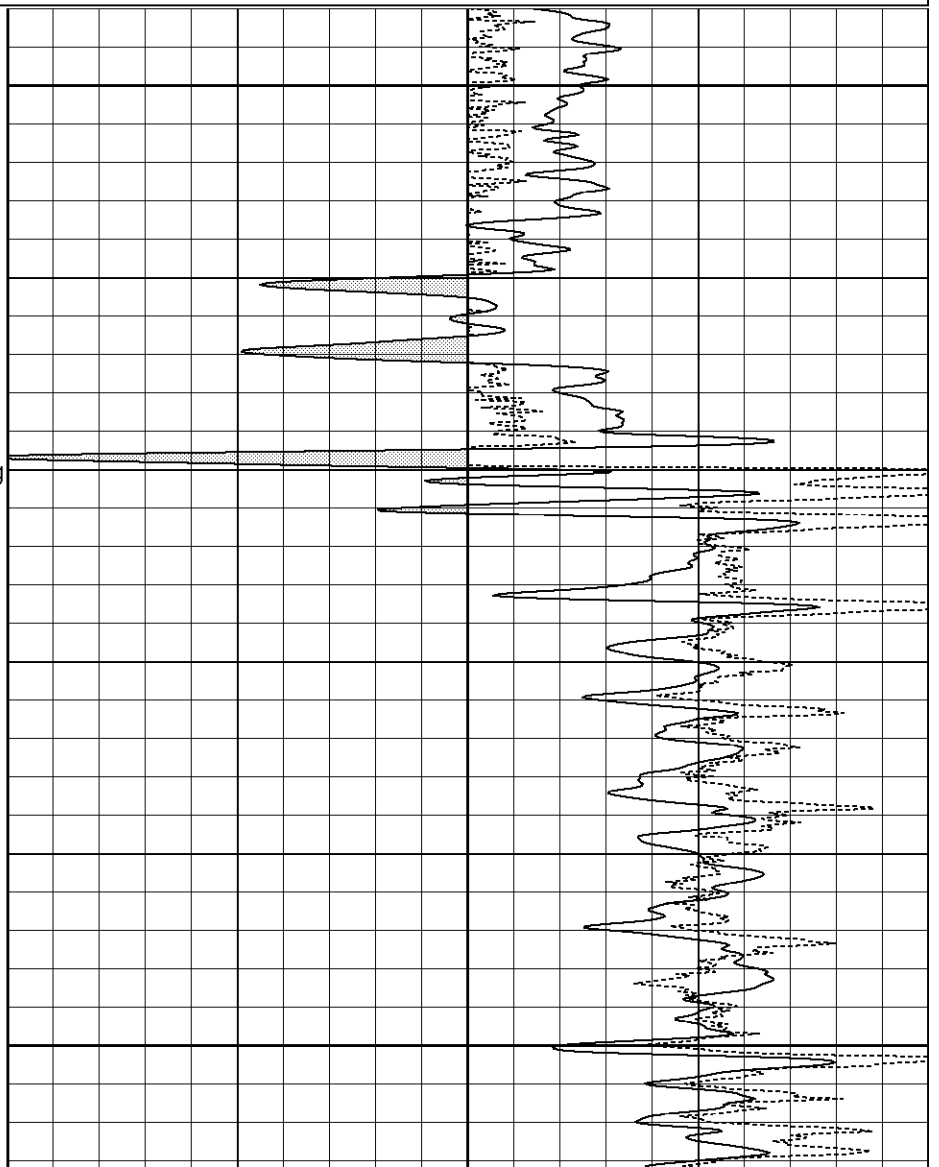
Database File: xtoac1307.db  
Dataset Pathname: pass4.2  
Presentation Format: cdlhr  
Dataset Creation: Mon Aug 14 13:44:21 2006 by Calc Warrior 7.0 STD Ope  
Charted by: Depth in Feet scaled 1:120



200

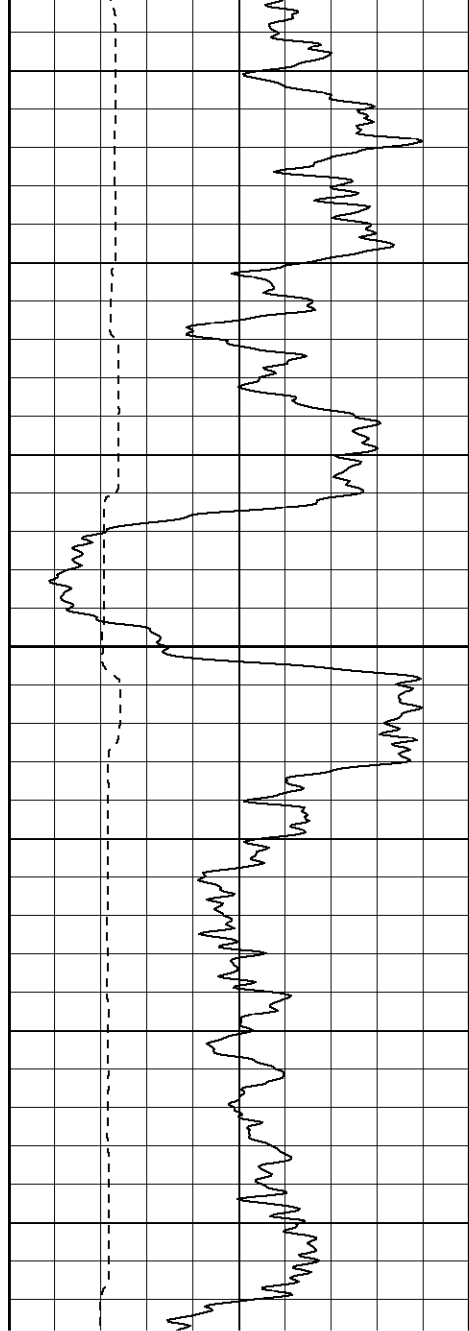
Surface Casing

250

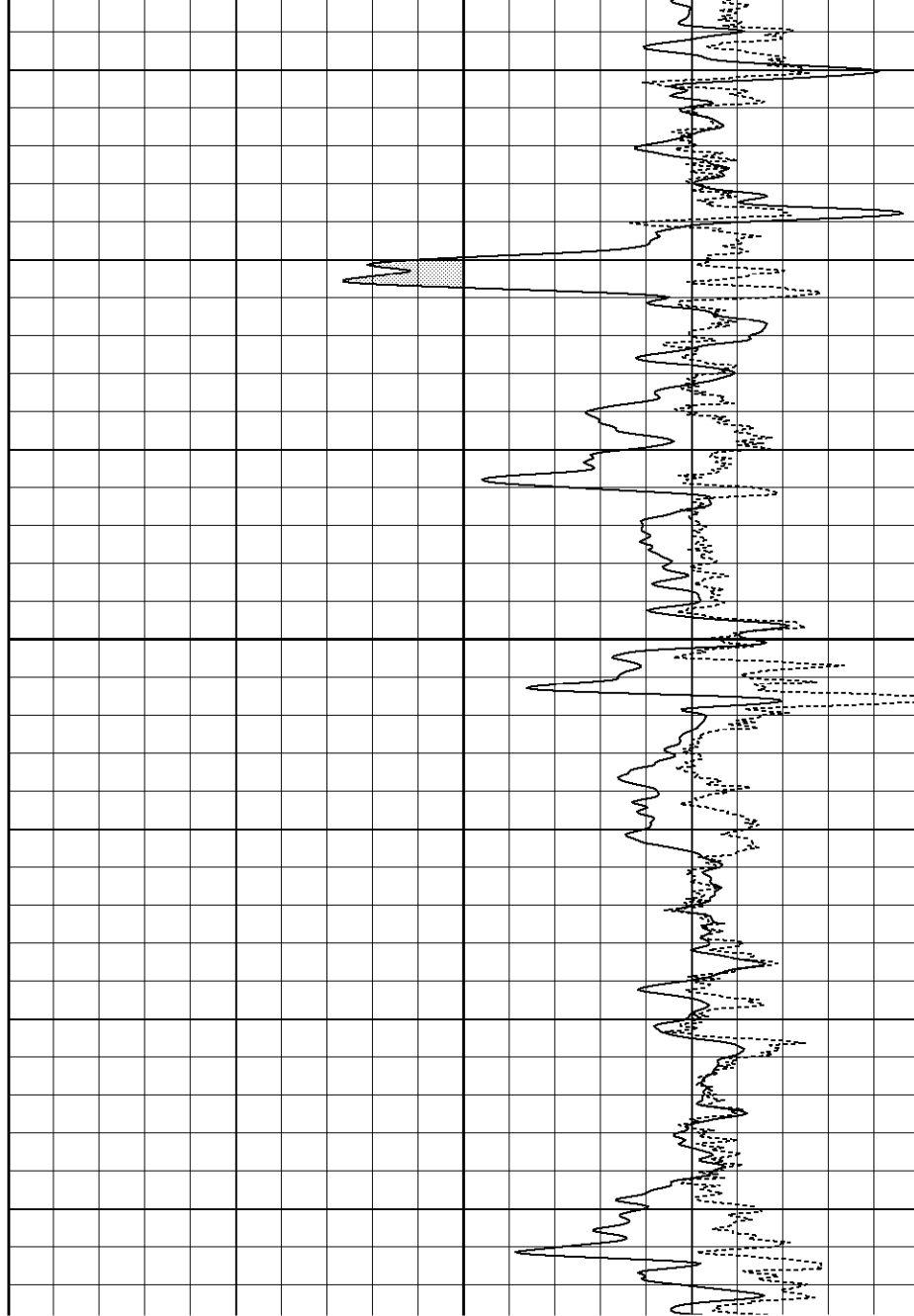


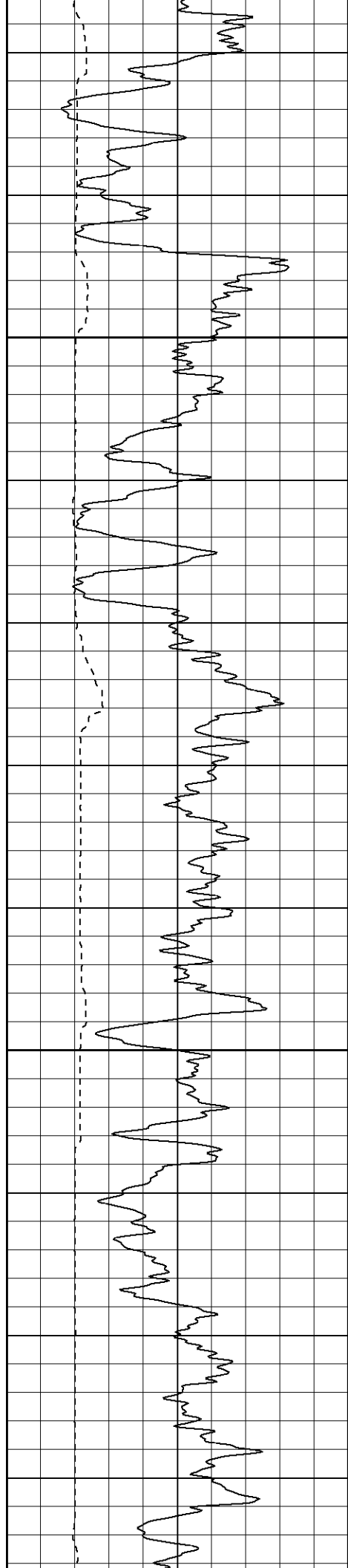






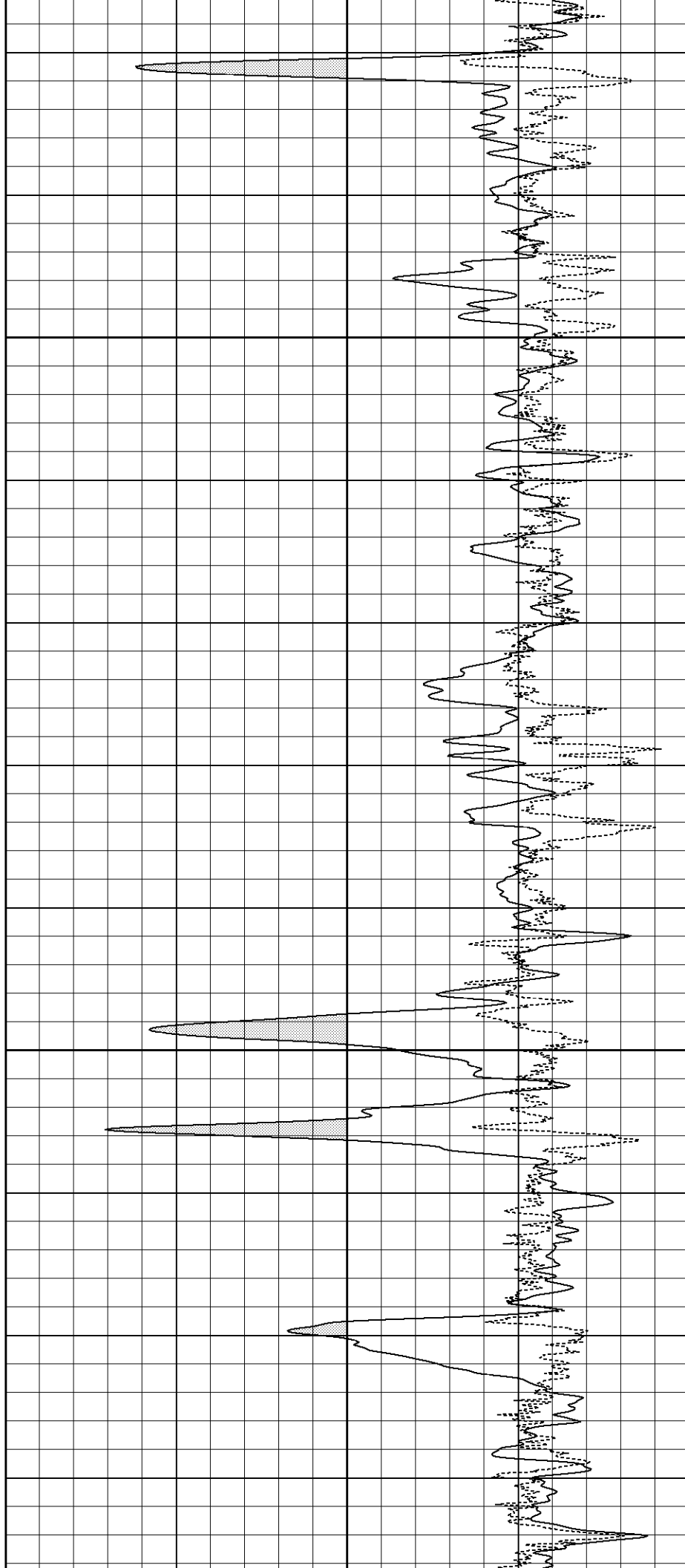
400

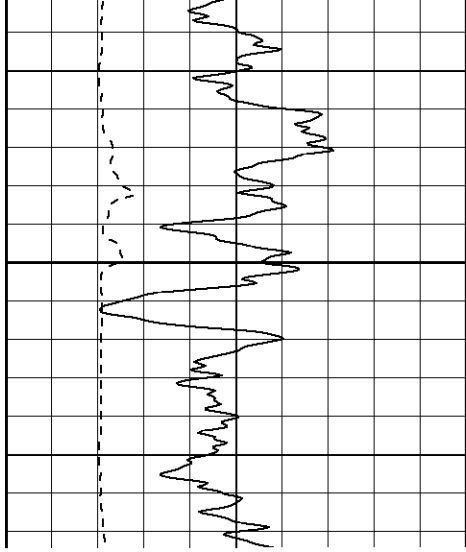




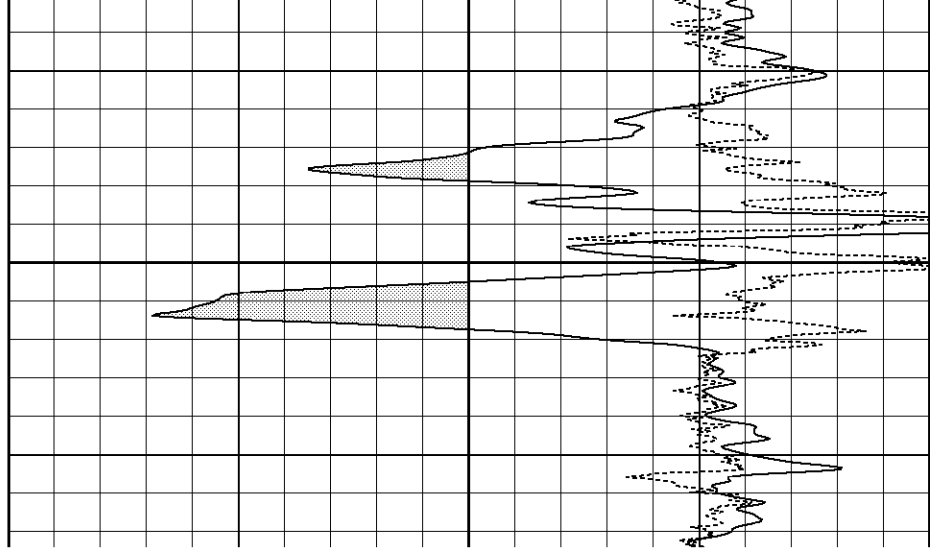
500

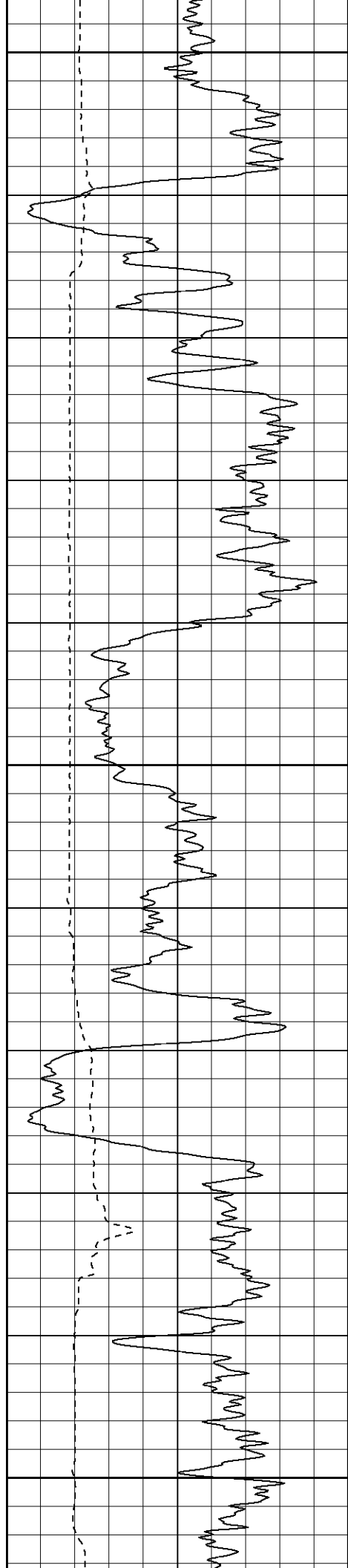
550





600

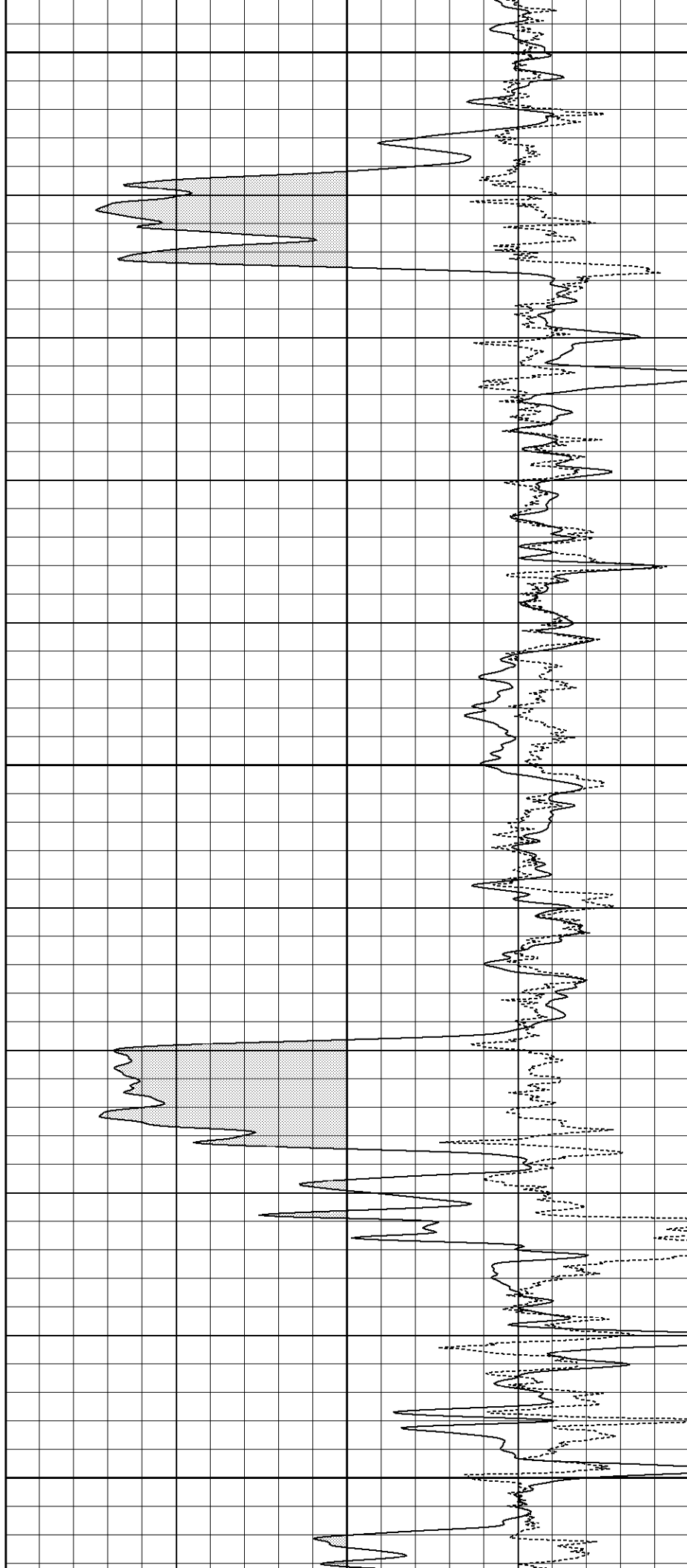


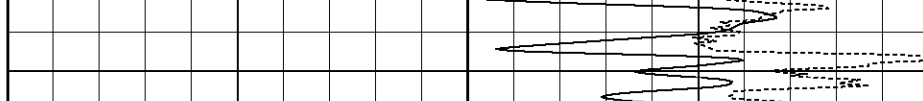


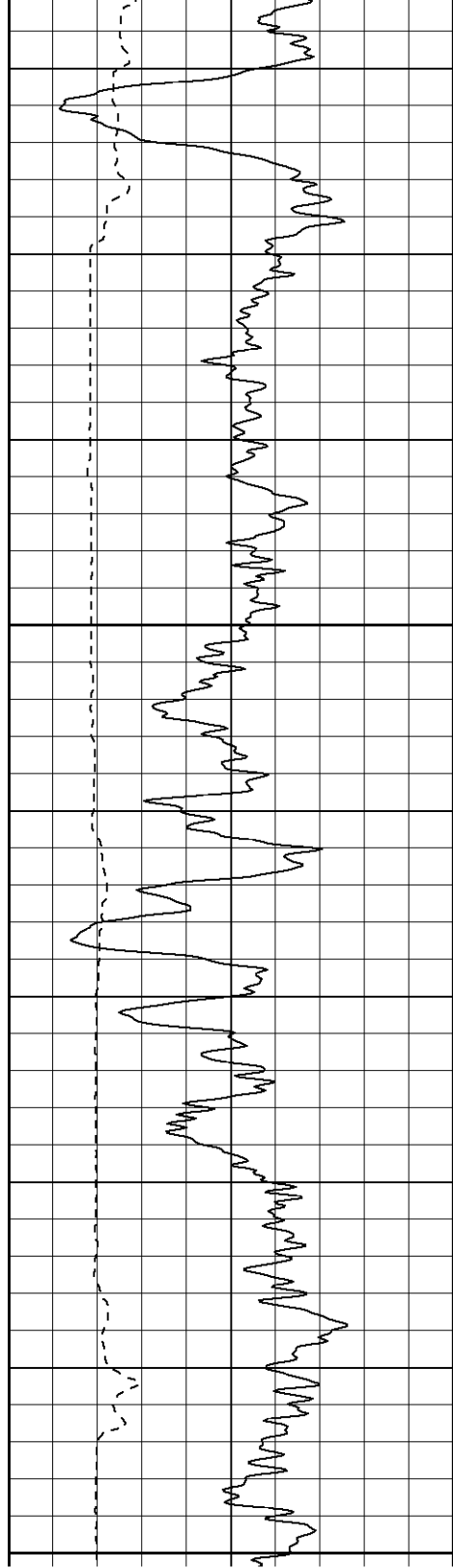
700

750

800

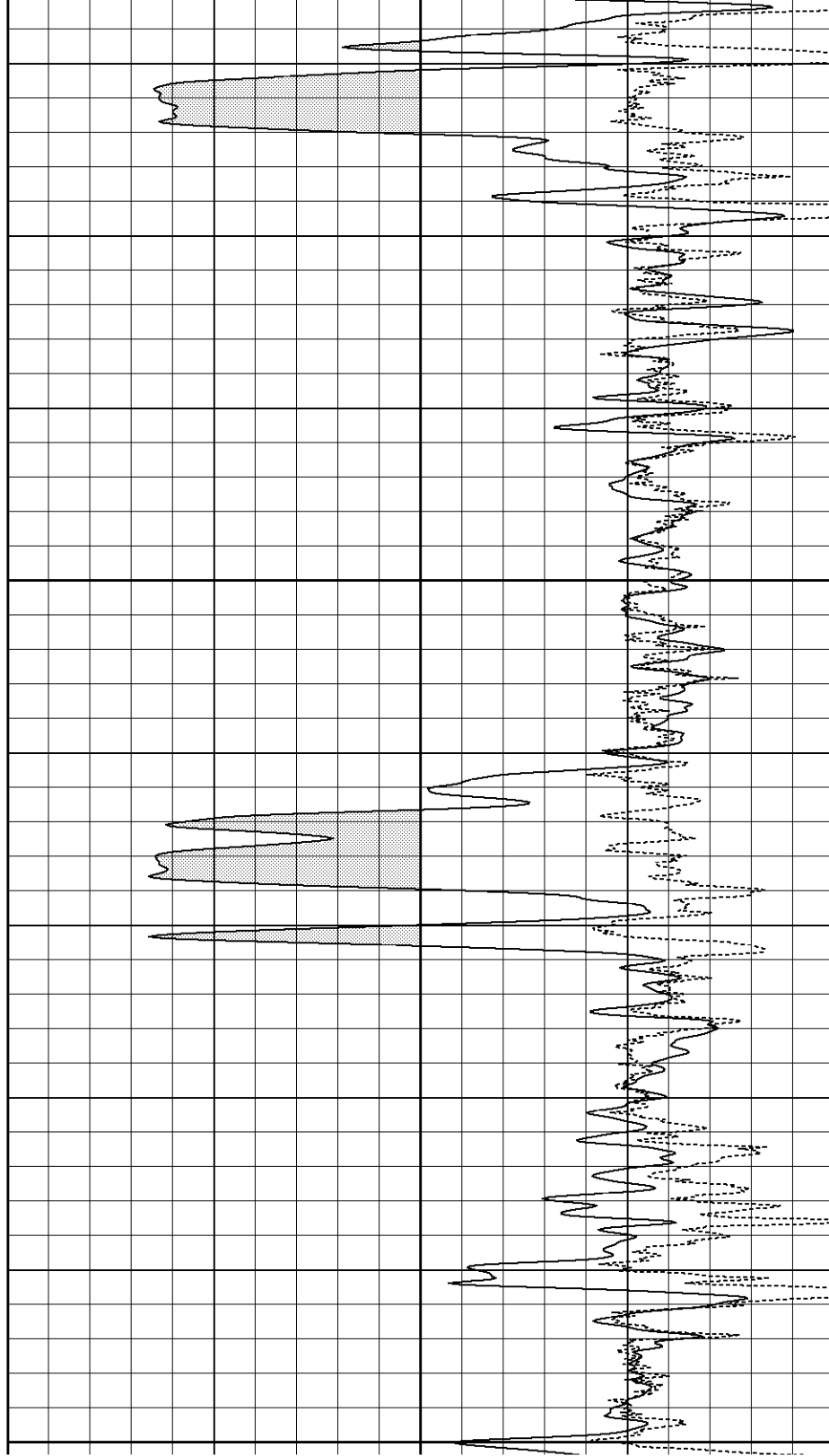


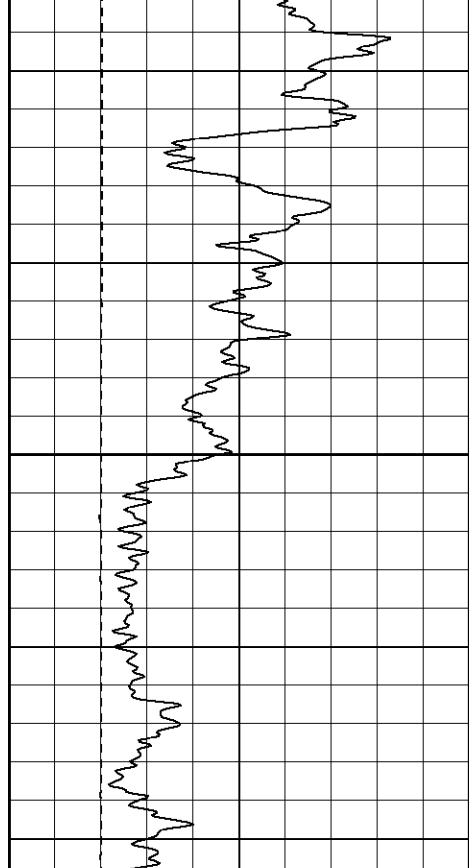




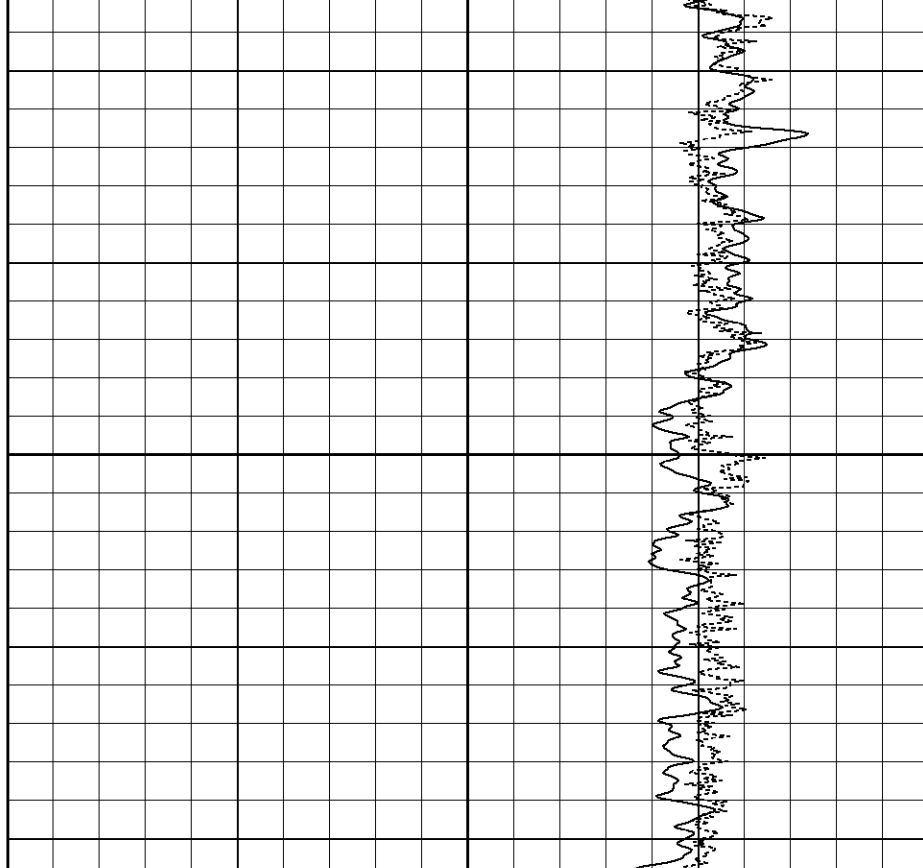
950

1000

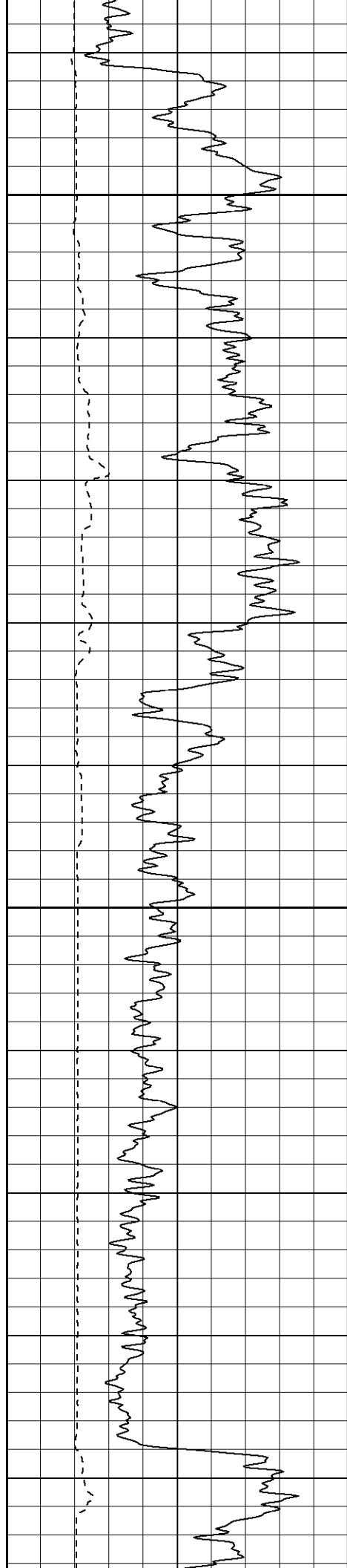




1050

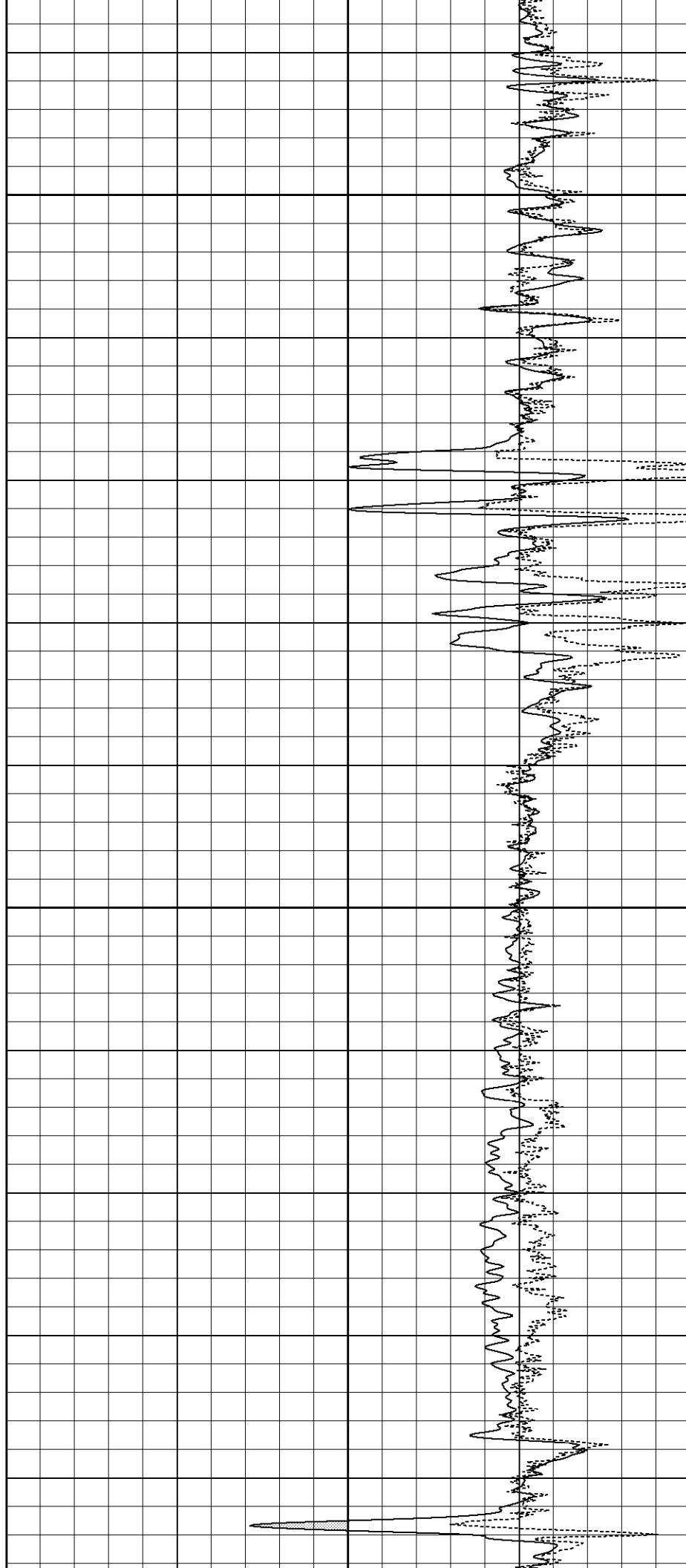


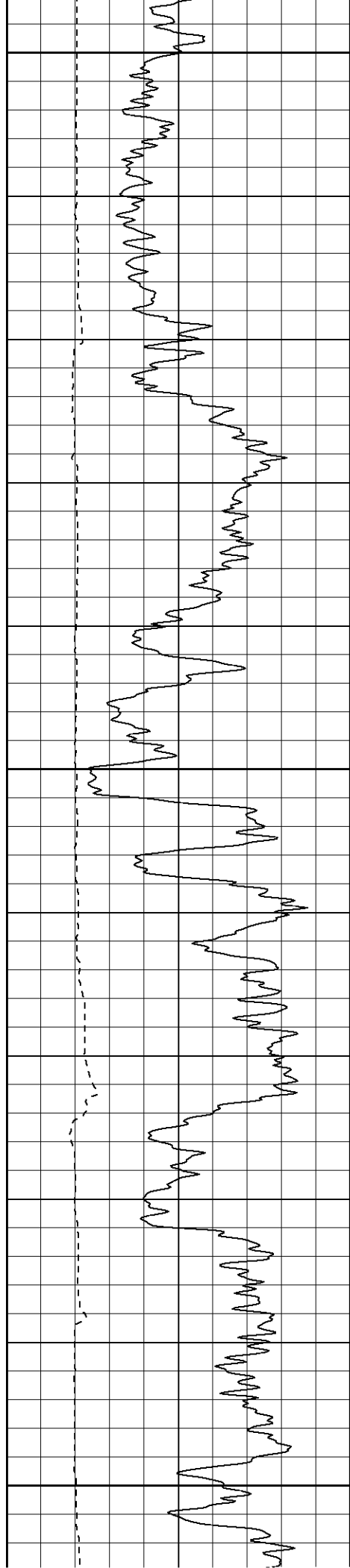




1150

1200

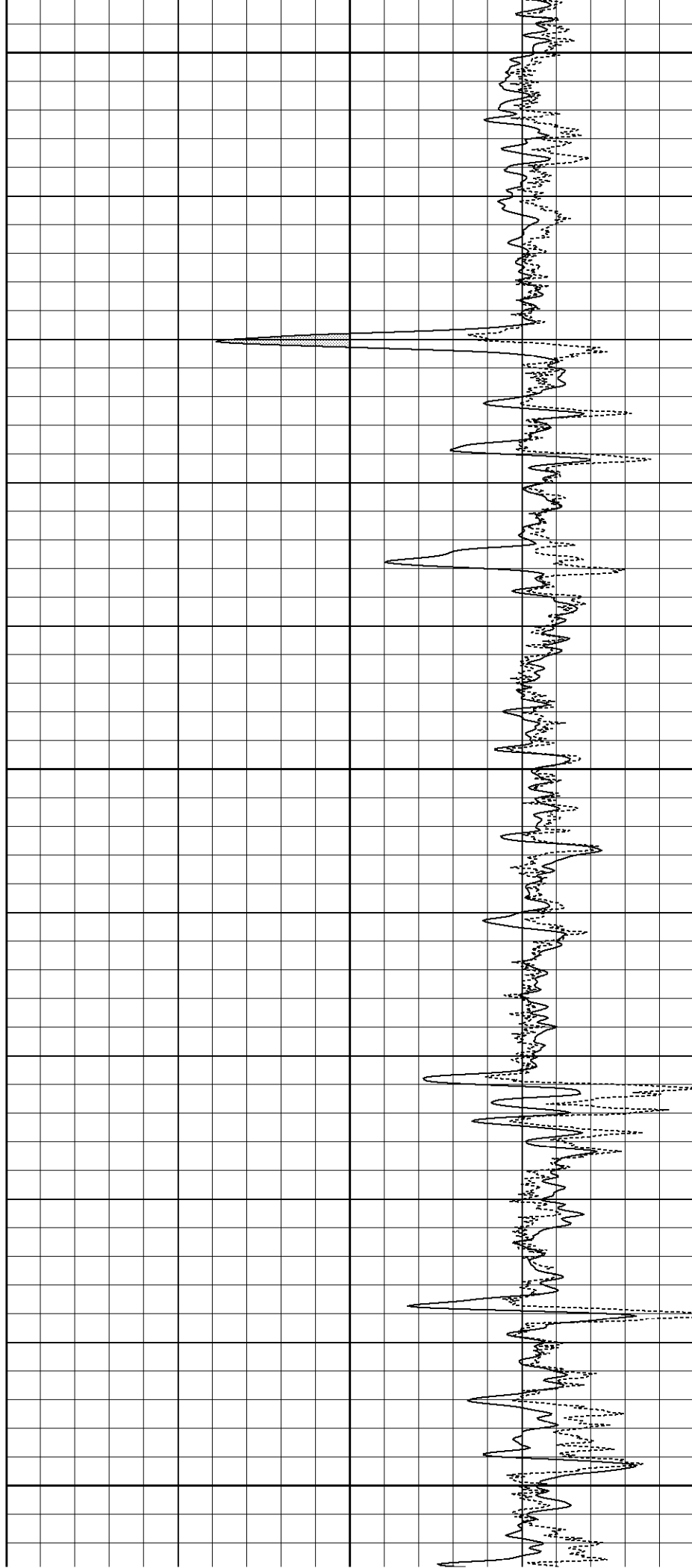


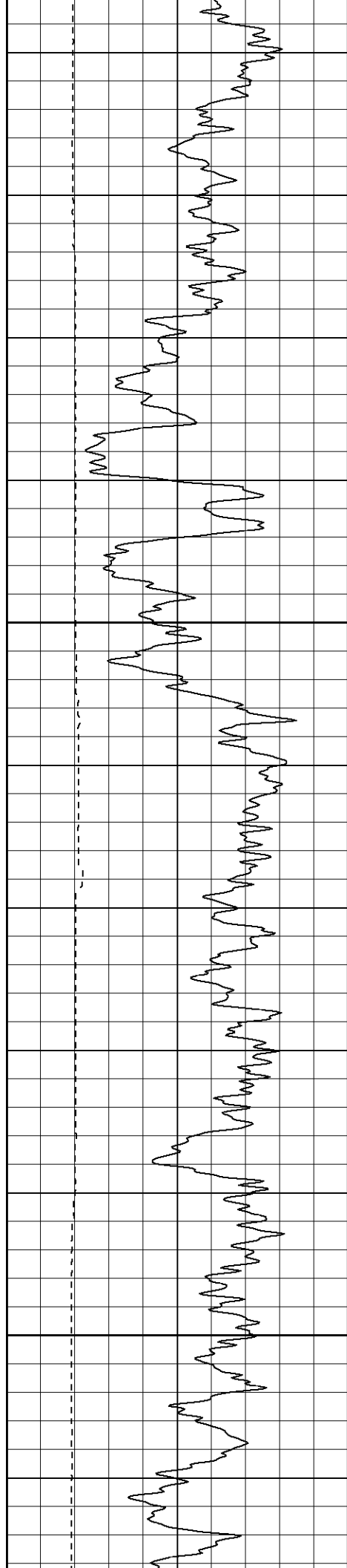


1250

1300

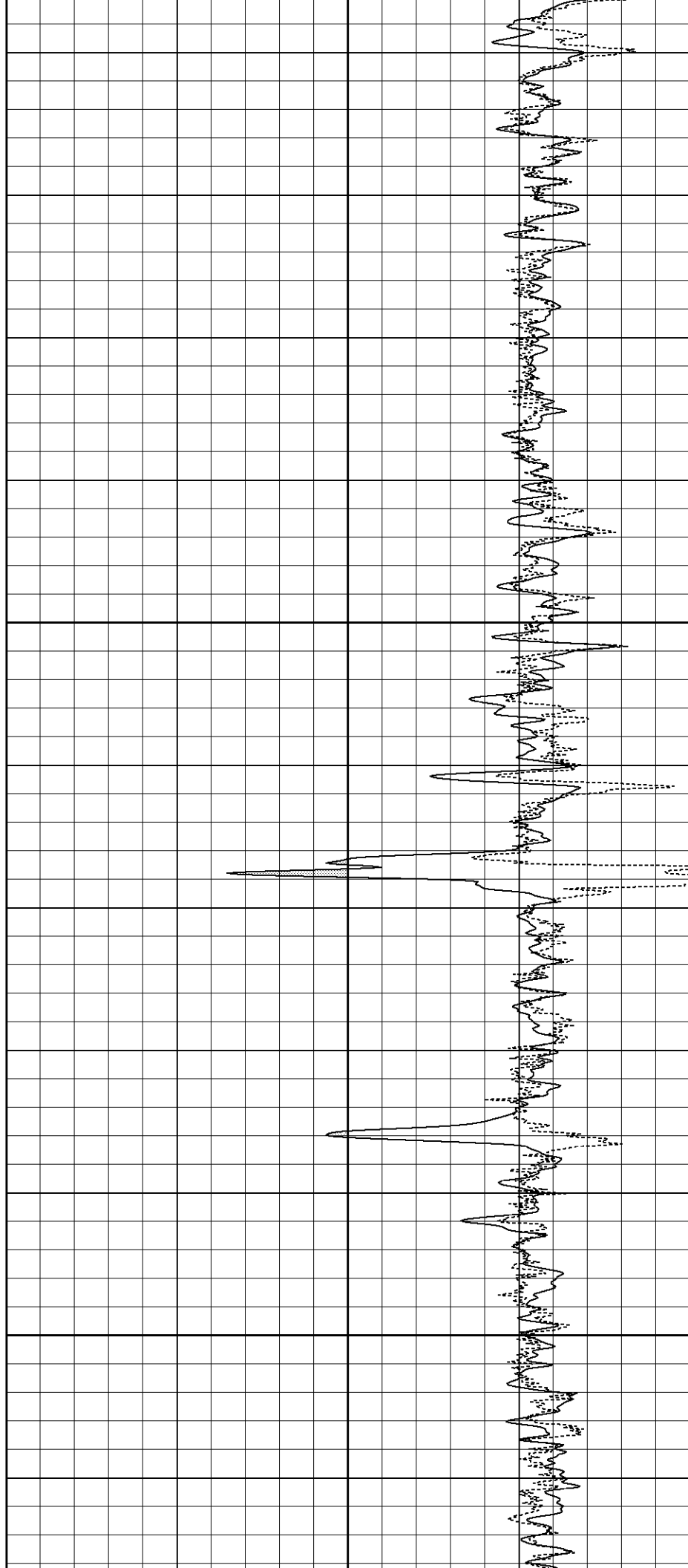
1350

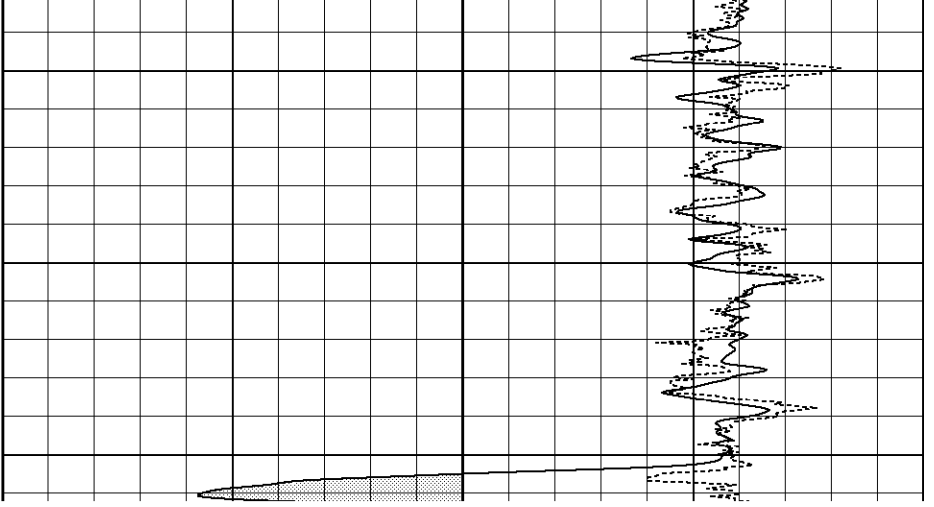
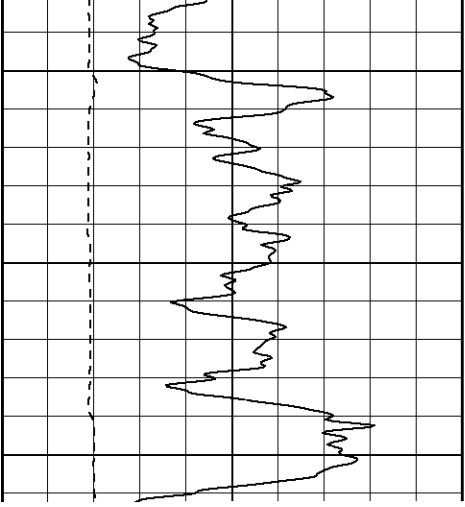


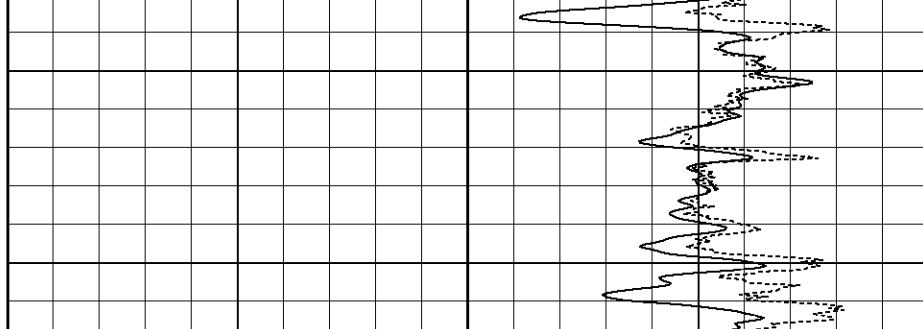
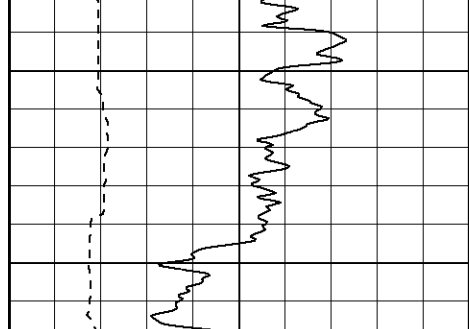


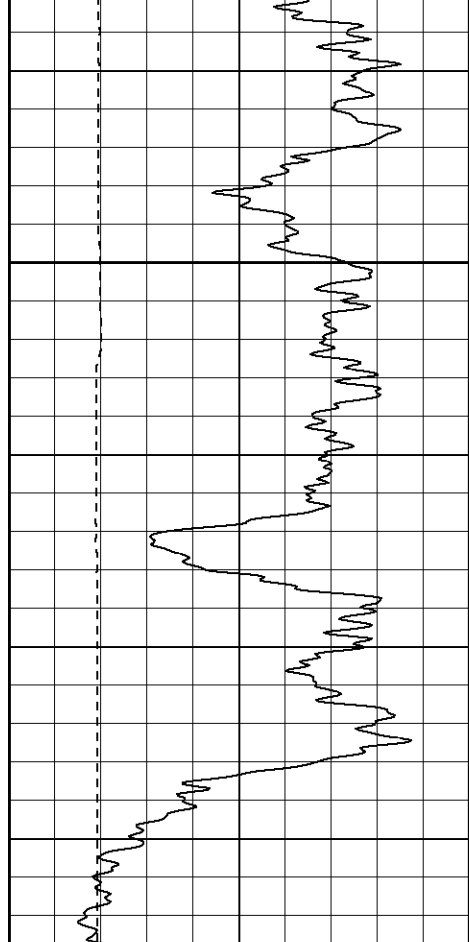
1400

1450

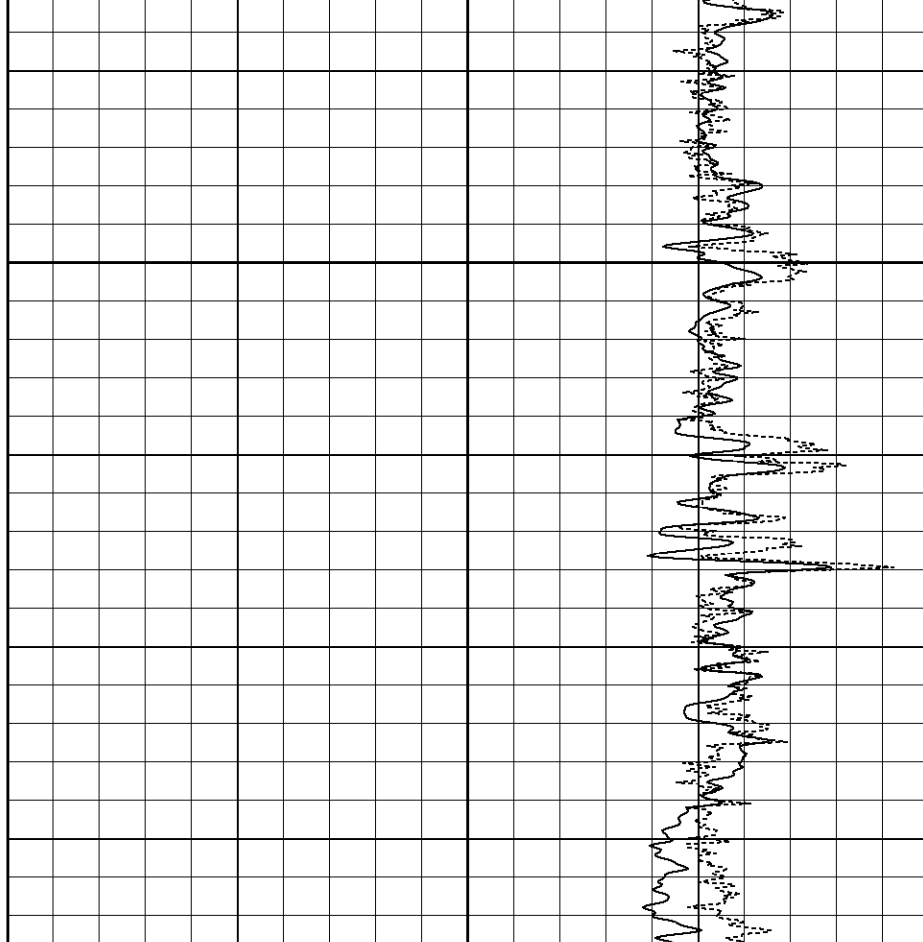


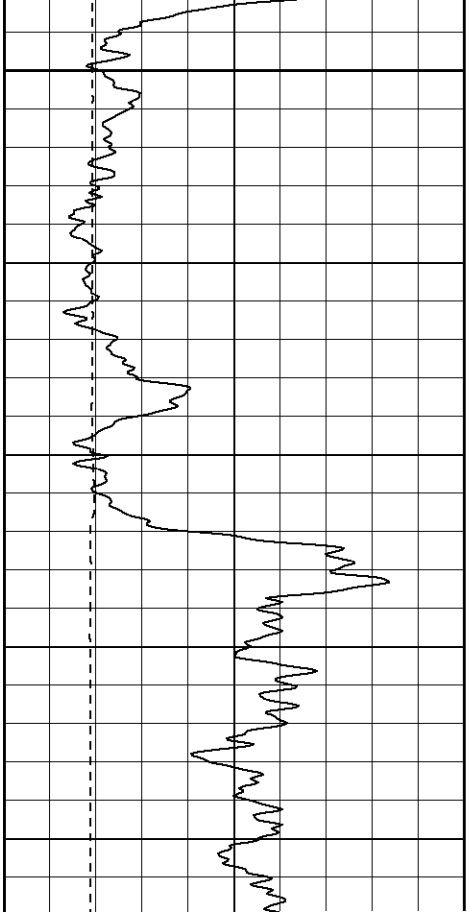




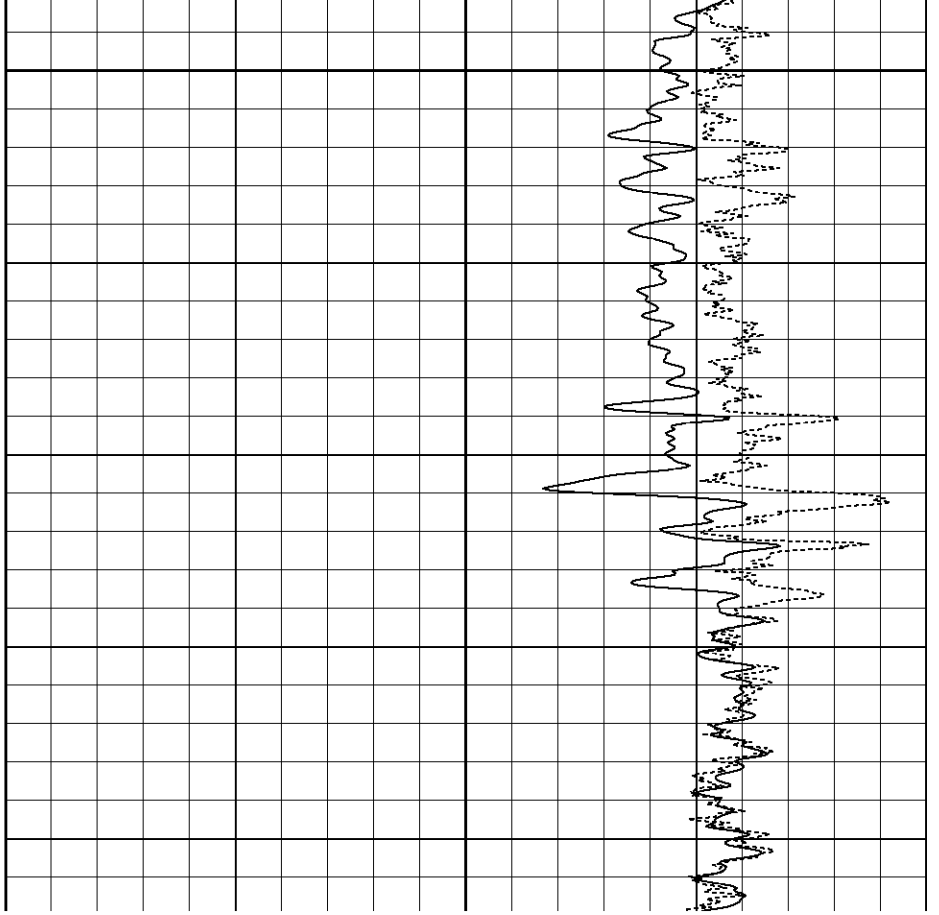


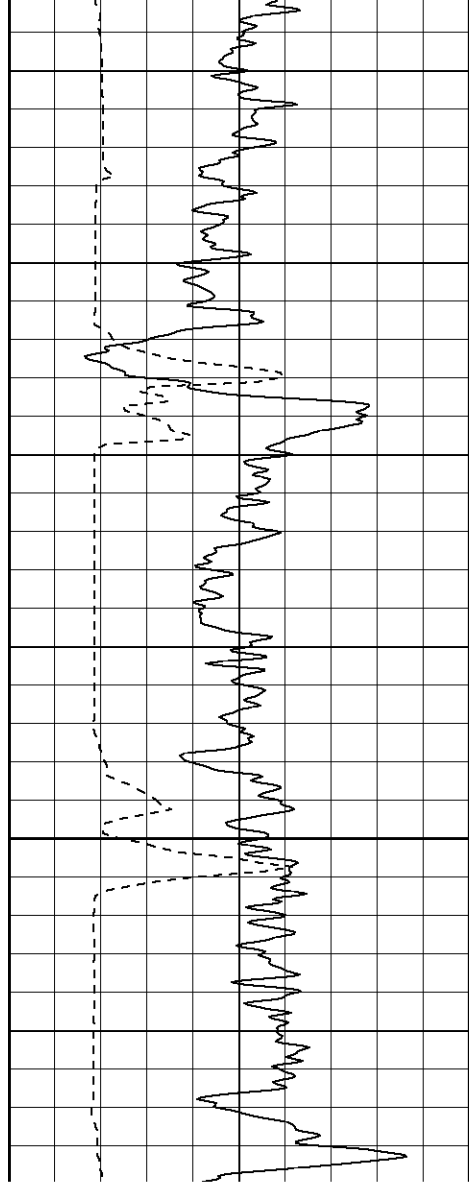
1700



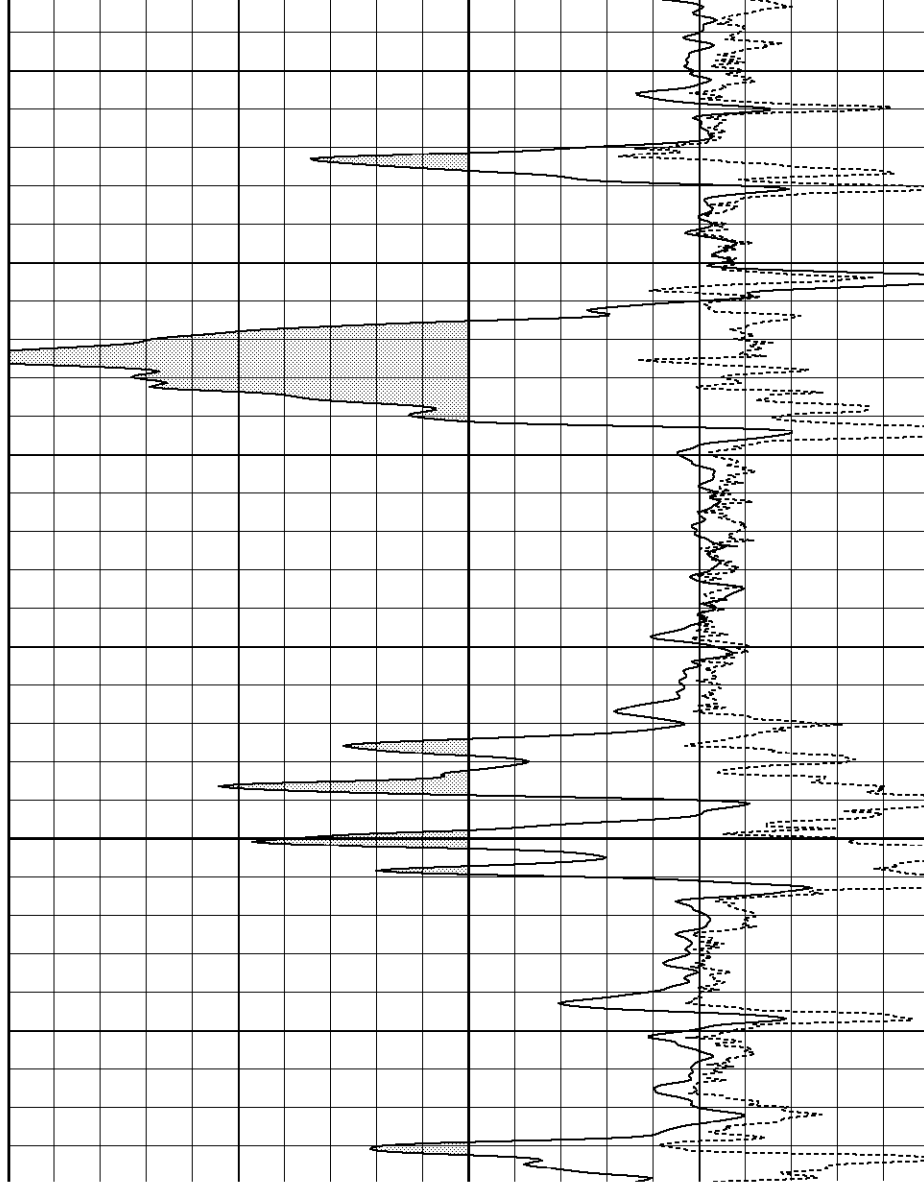


1800

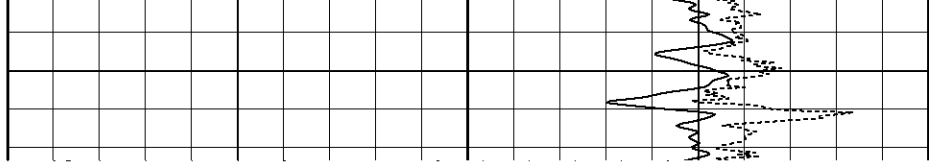
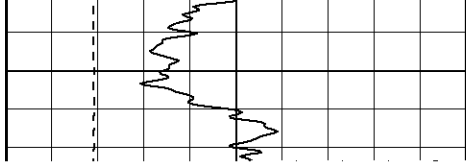


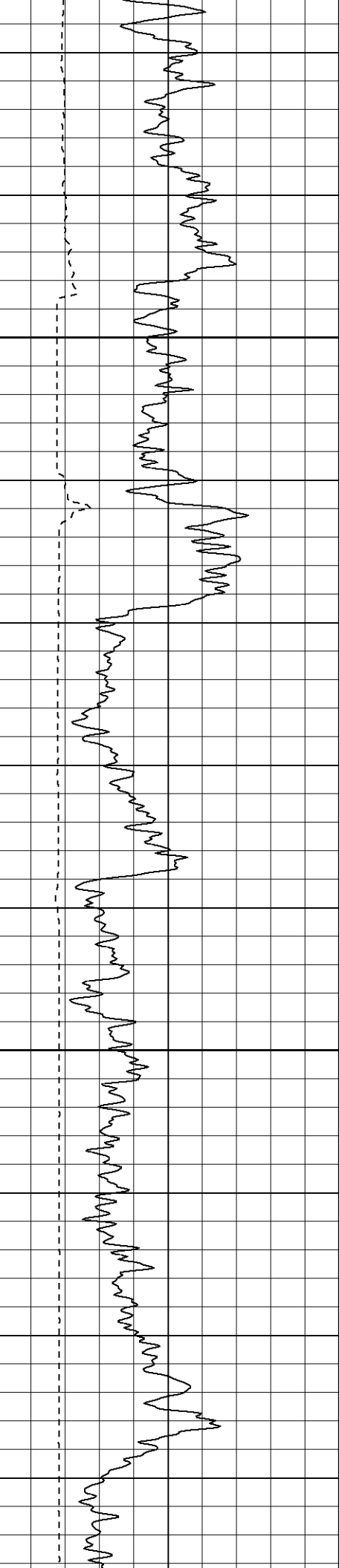


1950



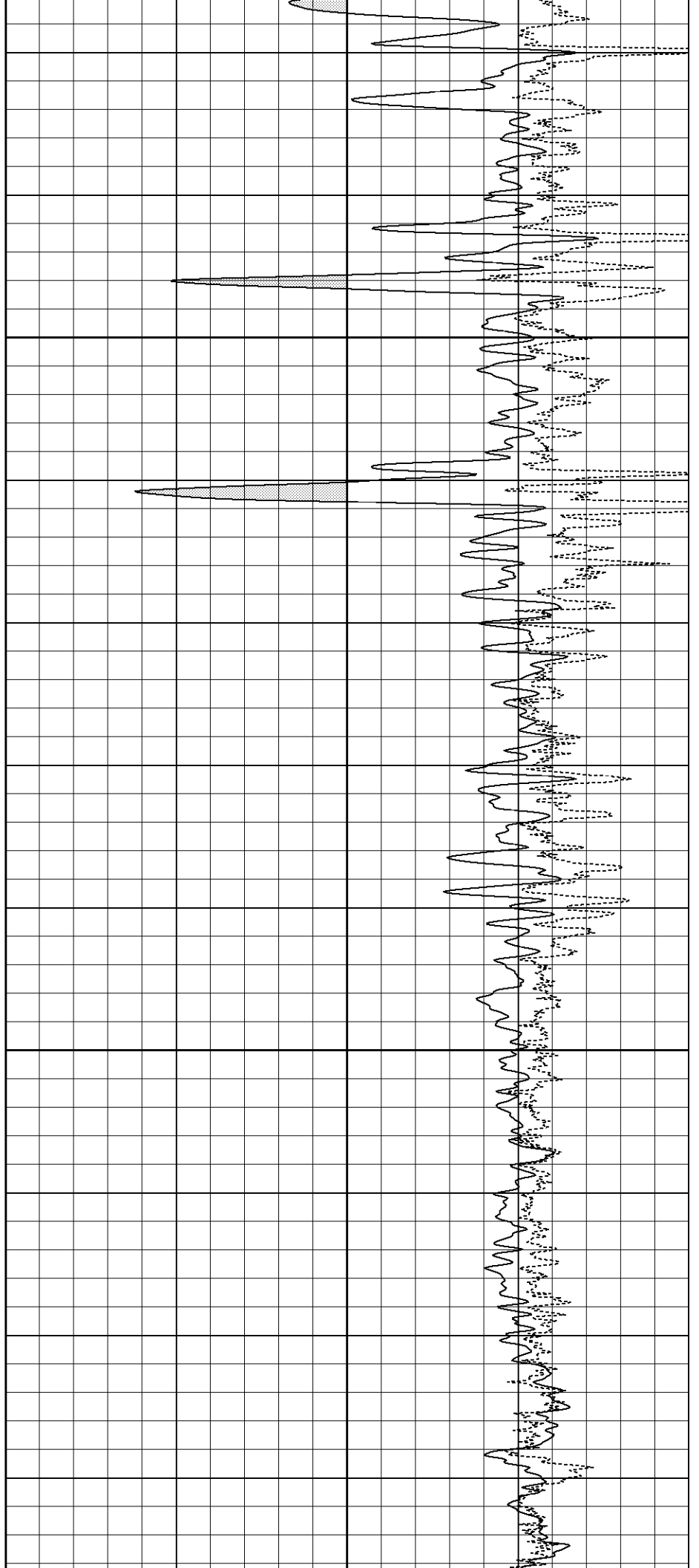






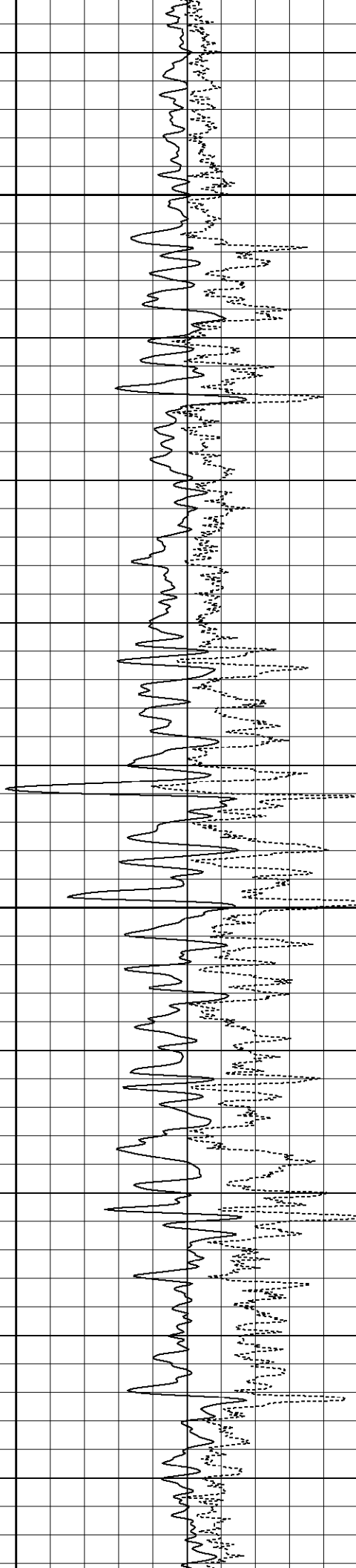
2150

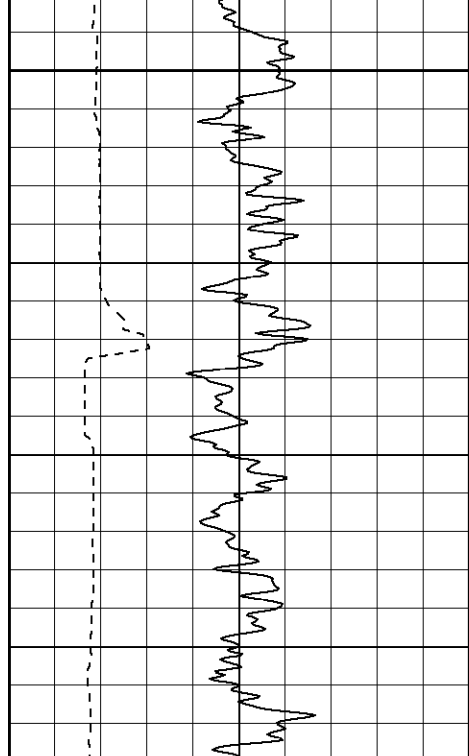
2200



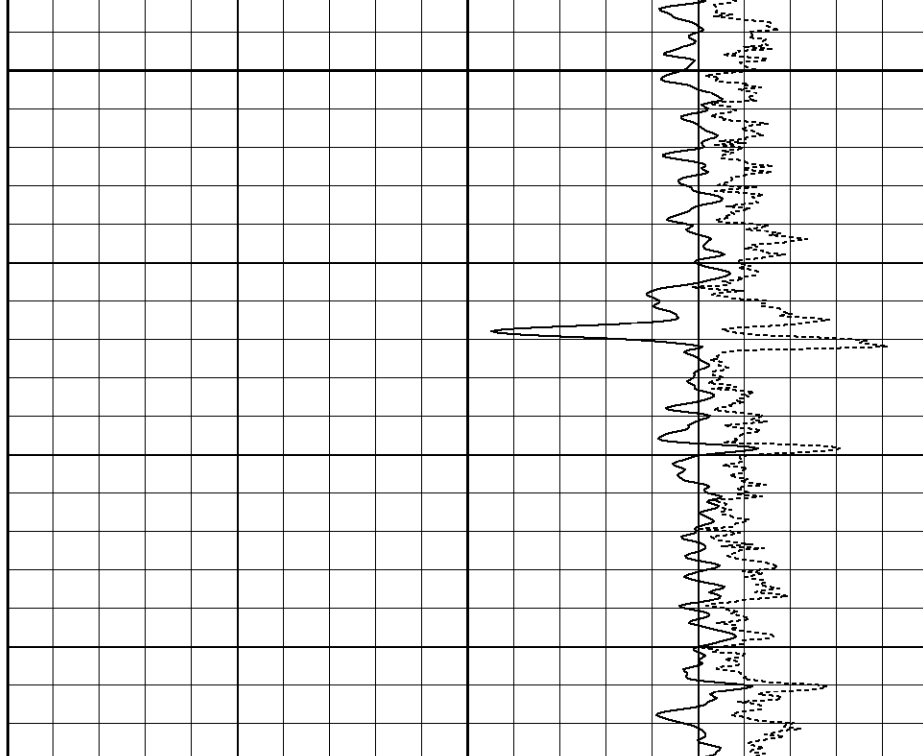
2250

2300

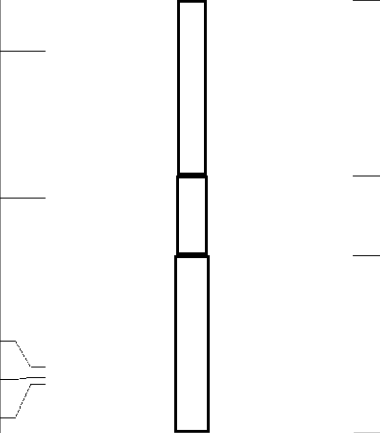




2350



Serial Number:	5138	
Tool Model:	G	
Performed:	Mon Aug 07 11:37:44 2006	
Calibrator Value:	1	NAPI
Calibrator Reading:	1	cps
Sensitivity:	1	NAPI/cps

Sensor	Offset (ft)	Schematic	Description	Len (ft)	OD (in)	Wt (lb)
NEU	12.44		NEU-G (5138) Gearhart Epithermal	5.75	3.50	85.00
GR	7.64		GR-O (2119) Oilex	2.60	3.63	74.00
LSD	2.13		CDL-O (2119) Oilex	5.77	4.00	201.00
DCAL	1.79					
SSD	1.58					
		Dataset: /field/well/run/_plots/_jobs_/cdl Total Length: 14.12 ft Total Weight: 360.00 lb O.D. 4.00 in				