

ROCK TYPES

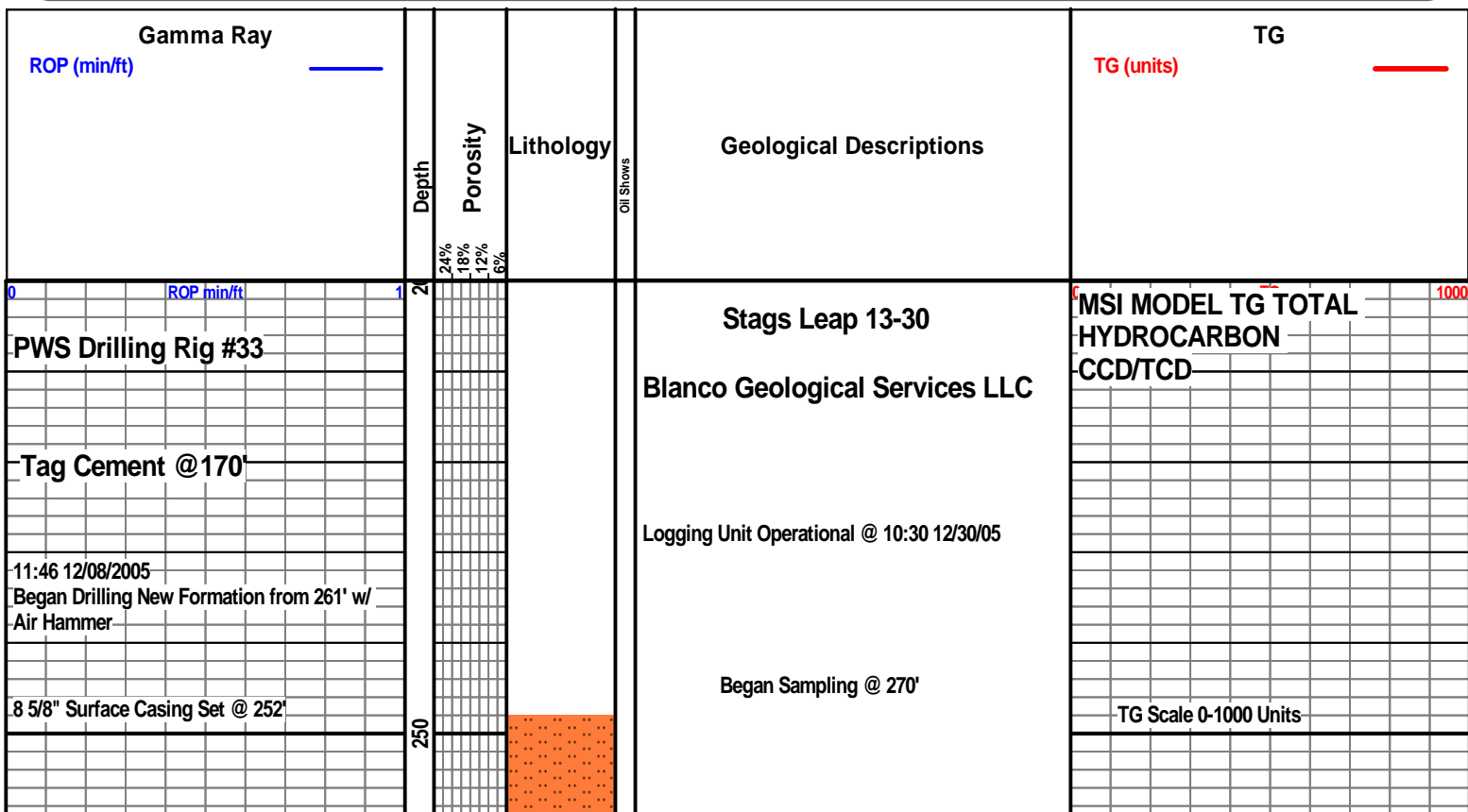
Anhy	Clyst	Gyp	Mrlst	Shgy
Bent	Coal	Igne	Salt	Slstst
Brec	Congl	Lmst	Shale	Ss
Cht	Dol	Meta	Shcol	Till

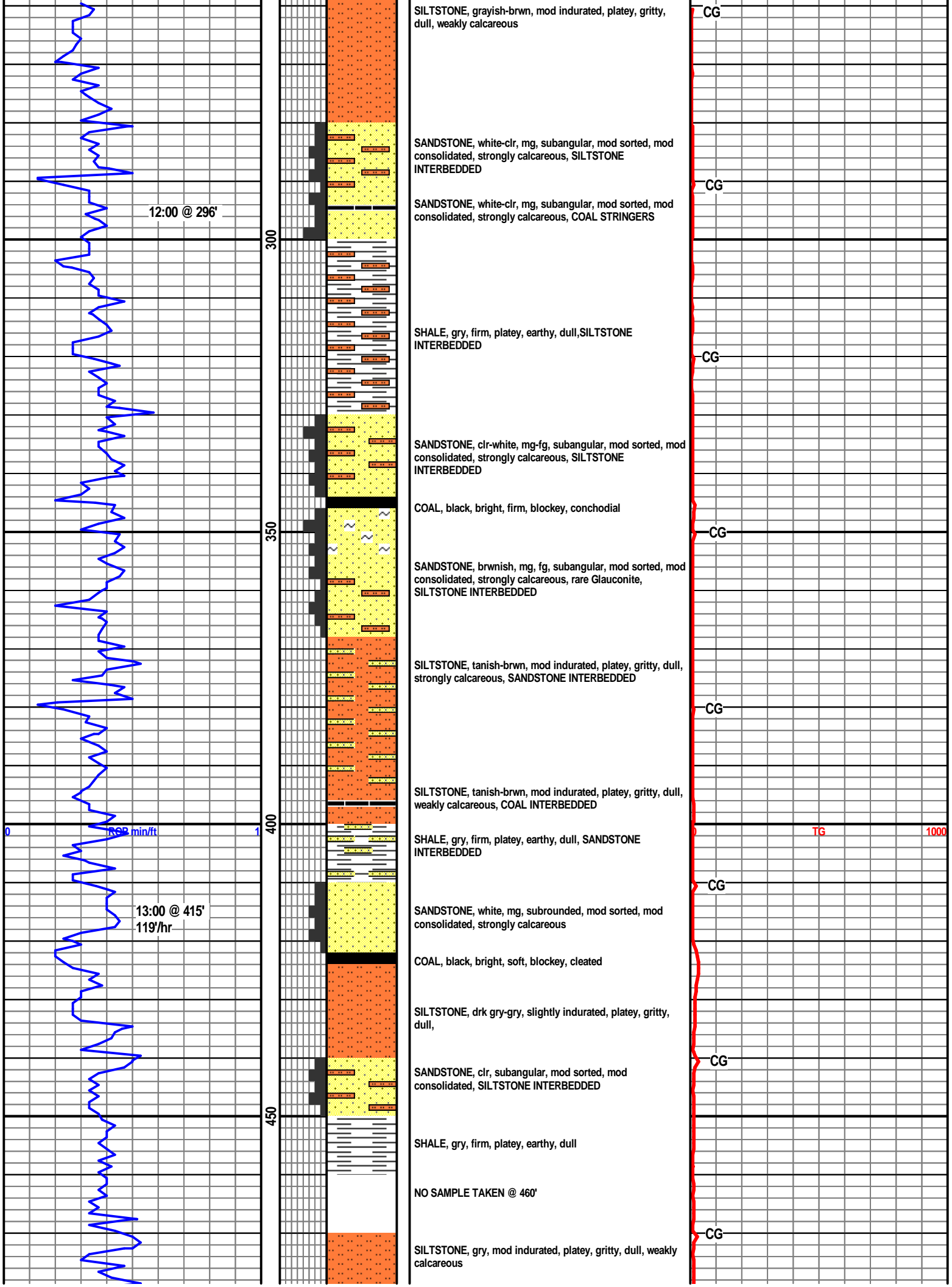
ACCESSORIES

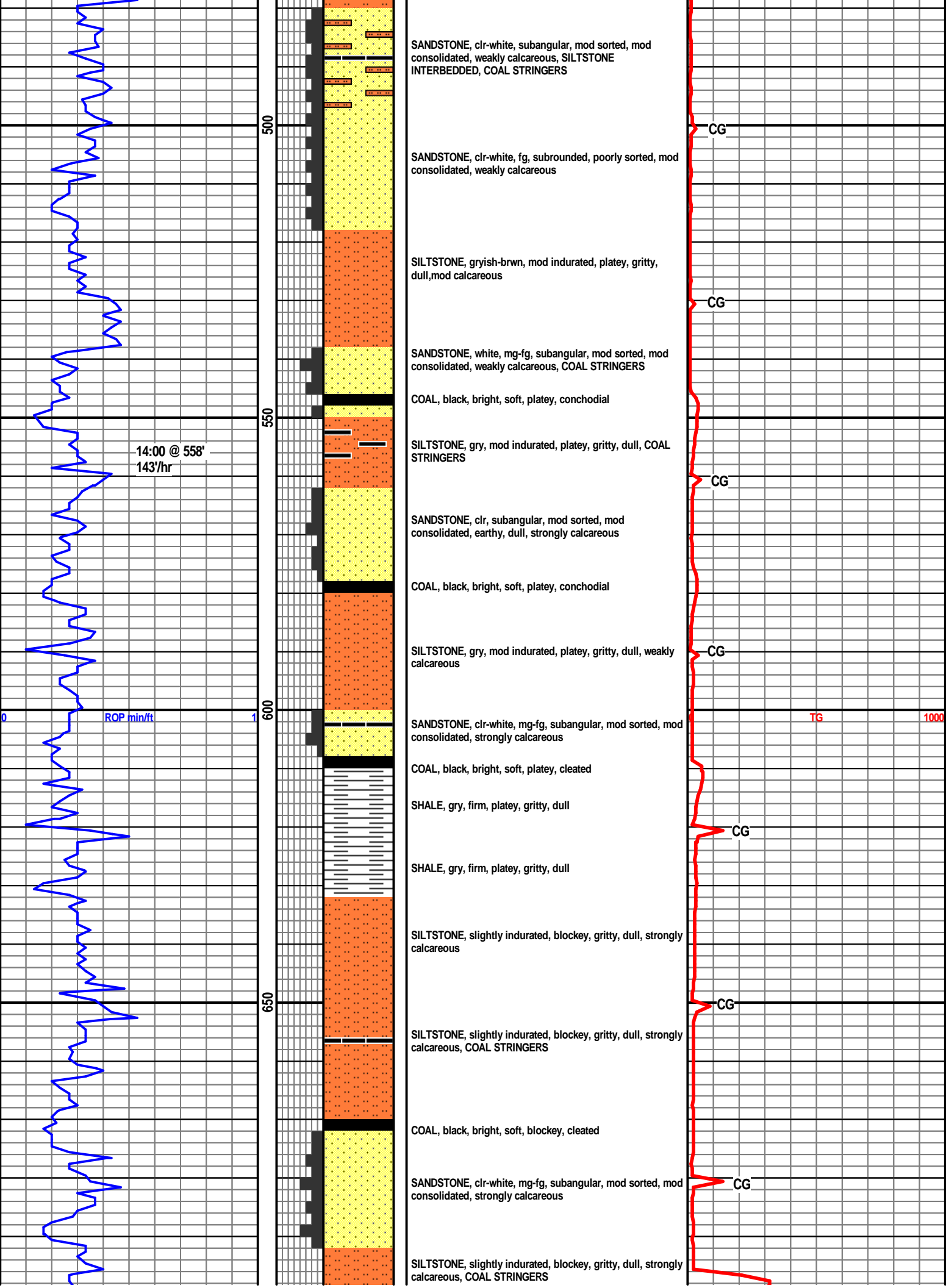
MINERAL	Gyp	FOSSIL	Ostra	Slststrg
Anhy	Hvymin	Algae	Pelec	Ssstrg
Arggrn	Kaol	Amph	Pellet	TEXTURE
Arg	Marl	Belm	Pisolite	Boundst
Bent	Minxl	Bioclst	Plant	Chalky
Bit	Nodule	Brach	Strom	Cryxln
Brecfrag	Phos	Bryozoa	STRINGER	Earthy
Calc	Pyr	Cephal	Anhy	Finexln
Carb	Salt	Coral	Arg	Grainst
Chtdk	Sandy	Crin	Bent	Lithogr
Chtlt	Sil	Echin	Coal	Microxln
Dol	Sulphur	Fish	Dol	Mudst
Feldspar	Tuff	Foram	Gyp	Packst
Ferrpel		Fossil	Ls	Wackest
Ferr		Gastro	Mrst	
Glau		Oolite		

OTHER SYMBOLS

POROSITY TYPE	Vuggy	ROUNDING	Spotted	Cv-v
Earthy	SORTING	Rounded	Ques	Cv-c
Fenest	Well	Subrnd	Dead	EVENTS
Fracture	Moderate	Subang	INTERVALS	Rft
Inter	Poor	Angular	Core	Sidewall
Moldic		OIL SHOWS	Dst	Srfcsg
Organic		Even	Srfcsg	
Pinpoint				







15:00 @ 705'
147/hr

700
750
800
850
900

SANDSTONE, clr-white, mg-fg, subangular, mod sorted, mod consolidated, strongly calcareous

SILTSTONE, slightly indurated, blockey, gritty, dull, strongly calcareous

SANDSTONE, clr, subangular, mod sorted, mod consolidated, earthy, dull, strongly calcareous, COAL STRINGERS

COAL, black, bright, soft, platy, conchoidal

SHALE, gry, firm, earthy, dull

COAL, black, bright, soft, platy, conchoidal

SANDSTONE, clr, subangular, mod sorted, mod consolidated, earthy, dull, strongly calcareous

SANDSTONE, clr, subangular, mod sorted, mod consolidated, earthy, dull, strongly calcareous, rare Glauconite, SILTSTONE INTERBEDDED

865' Trinidad Sandstone

SANDSTONE white clear, fg-vfg, sub angular-sub rounded, well sorted, un consolidated, calcareous

CG

CG

CG

CG

TG

1000

CG

CG

CG

ROP min/ft

16:00 @ 836'
131/hr

