



**SUPERIOR**  
 Black Lick, Pa.  
 Mercer, Pa.  
 Wooster, Oh.  
 Cleveland, Ok.  
 Trinidad, Co.

**CEMENT BOND  
 GAMMA RAY  
 1000 PSI**

Company XTO Energy Inc.  
 Well New Elk 36-10  
 Field Purgatorie River  
 County Las Animas State CO

Location: 1579' FSL & 1703' FEL  
 API #: 05 071 09136 00  
 Other Services PRES CONTROL  
 Permanent Datum SEC 36 TWP 33S RGE 68W  
 Log Measured From Ground Level Elevation 787'1"  
 Drilling Measured From Ground Level Elevation 787'1"

Date	3/26/07
Run Number	two
Depth Driller	2200'
Depth Logger	1630'
Bottom Logged Interval	1626'
Top Log Interval	Surf.
Open Hole Size	7 7/8"
Type Fluid	water
Density / Viscosity	///
Max. Recorded Temp.	///
Estimated Cement Top	150'
Time Well Ready	RDA
Time Logger on Bottom	9:35
Equipment Number	0697
Location	Trinidad
Recorded By	Worley
Witnessed By	Mr. Polley

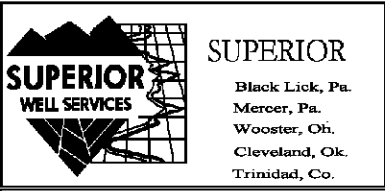
	Borehole Record			Tubing Record			
	Bit	From	To	Size	Weight	From	To
Casing Record							
Surface String		Size 8 5/8"		Wgt/Ft		Top 00	Bottom 498'
Prot. String							
Production String		5 1/2"				00	NA
Liner							

<<< Fold Here >>>

All interpretations are opinions based on inferences from electrical or other measurements and we cannot and do not guarantee the accuracy or correctness of any interpretation, and we shall not, except in the case of gross or willful negligence on our part, be liable or responsible for any loss, costs, damages, or expenses incurred or sustained by anyone resulting from any interpretation made by any of our officers, agents or employees. These interpretations are also subject to our general terms and conditions set out in our current Price Schedule.

Comments

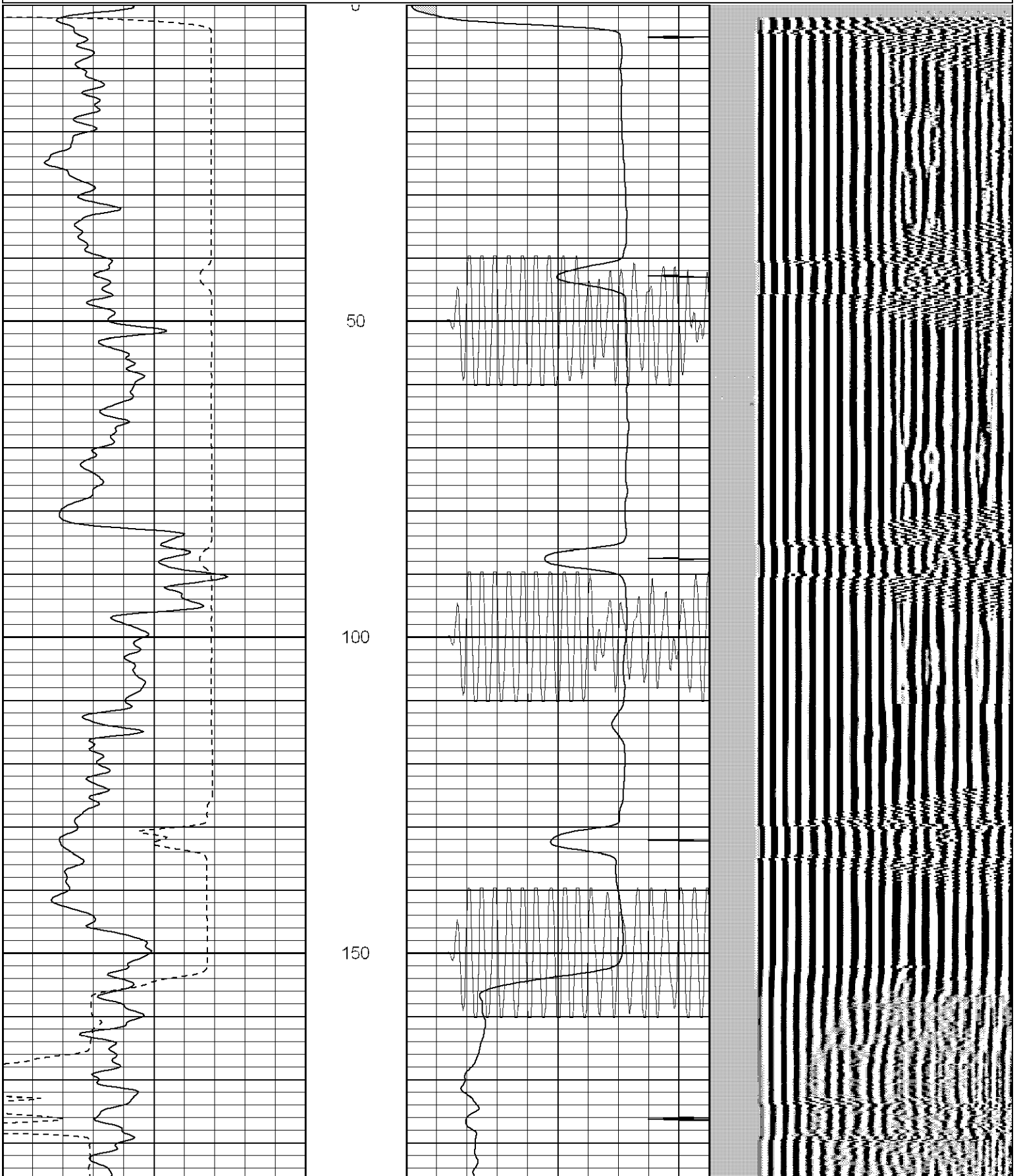
Second Bosque entrance four miles past Weston turn left, at Y stay left on Ciruele Canyon, drive to windmill, stay right, at next Y stay left, third drive thru location.  
 CBL ran under 1000 PSI.

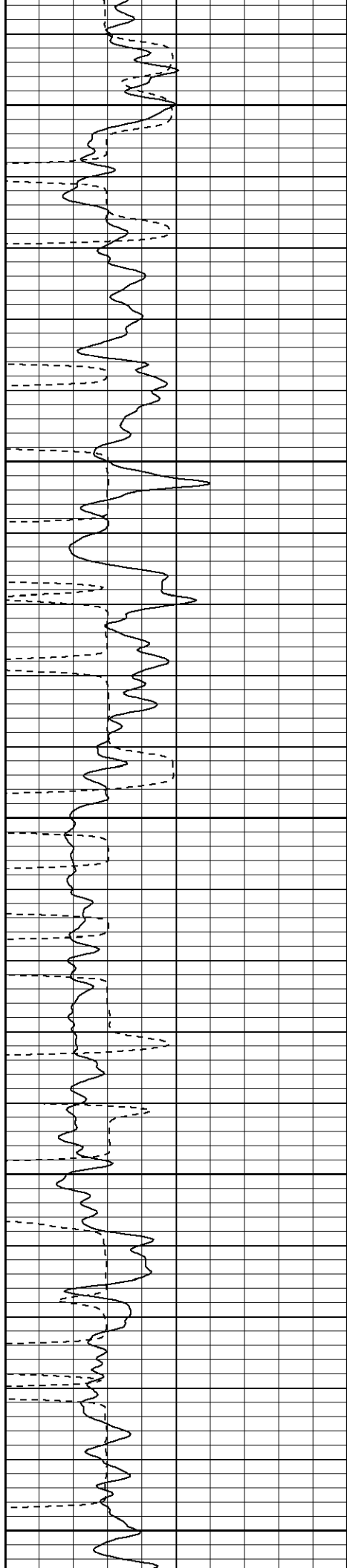


**Main Pass 1000 PSI**

Database File: ne36-10b32607.db  
 Dataset Pathname: pass3  
 Presentation Format: cblrt  
 Dataset Creation: Mon Mar 26 10:26:10 2007 by Calc Open-Cased 061129  
 Charted by: Depth in Feet scaled 1:240

0	GR (GAPI)	200	0	AMP3 (mV)	100	200	Variable Density	1200
400	TT3 (usec)	200	18	CCL	-2			
-----			200	CBL5	1200			





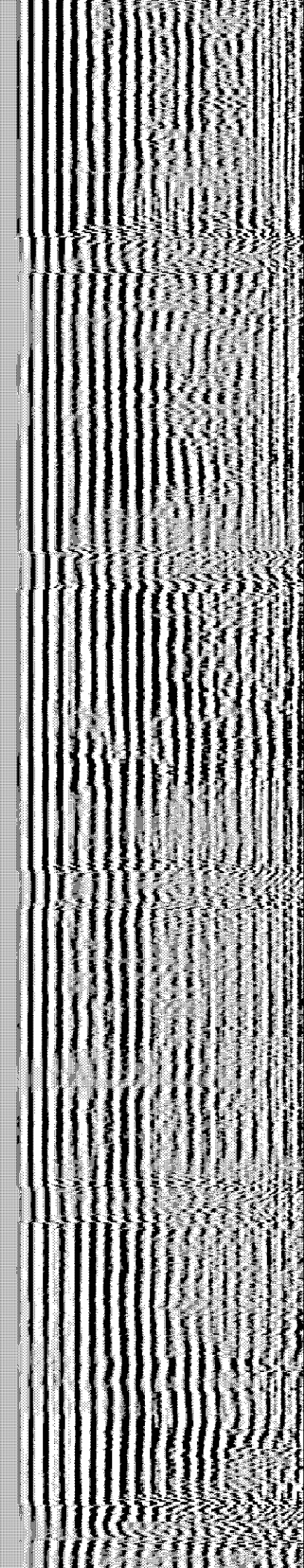
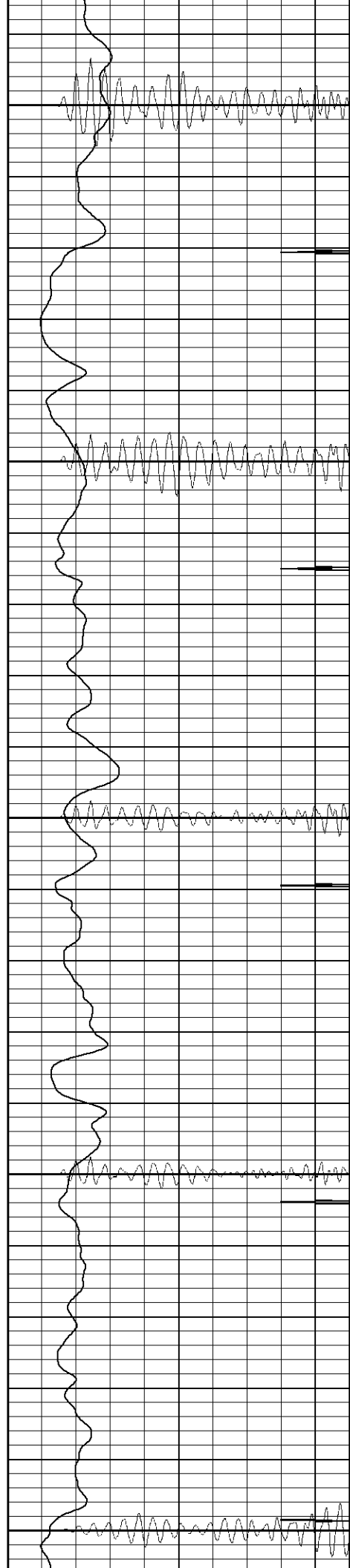
200

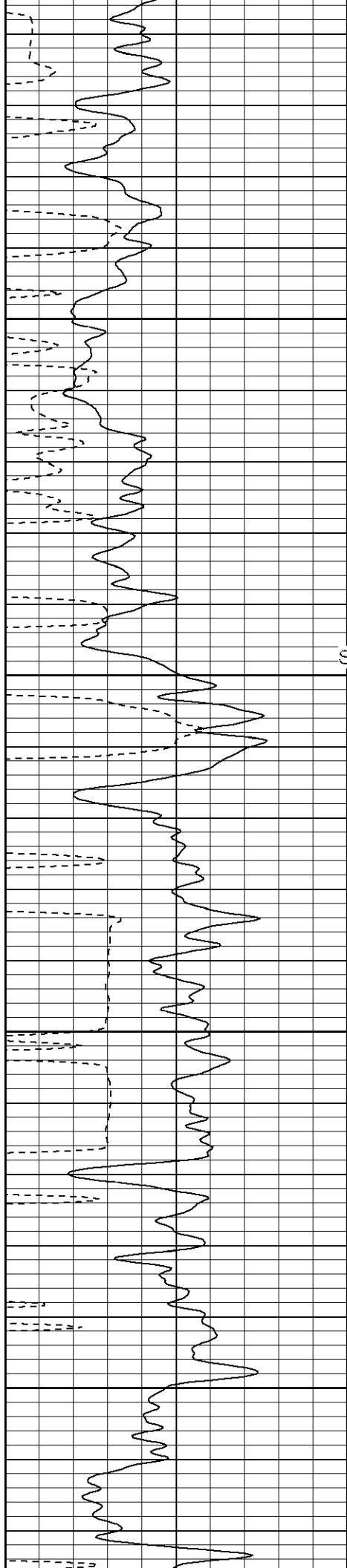
250

300

350

400



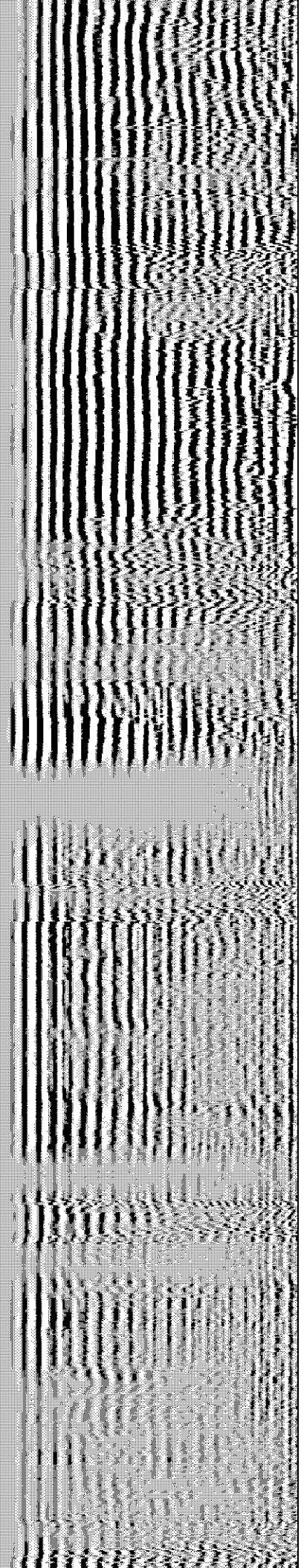
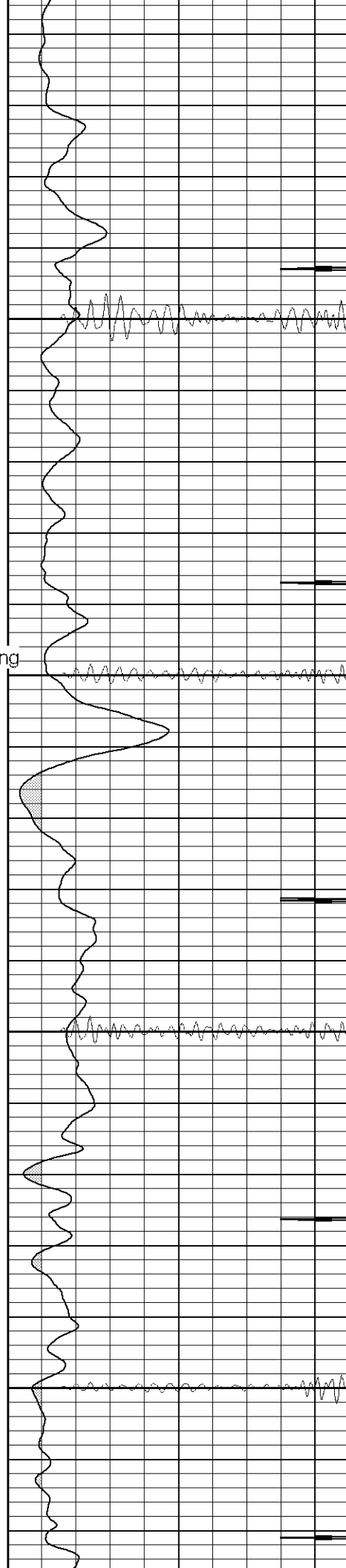


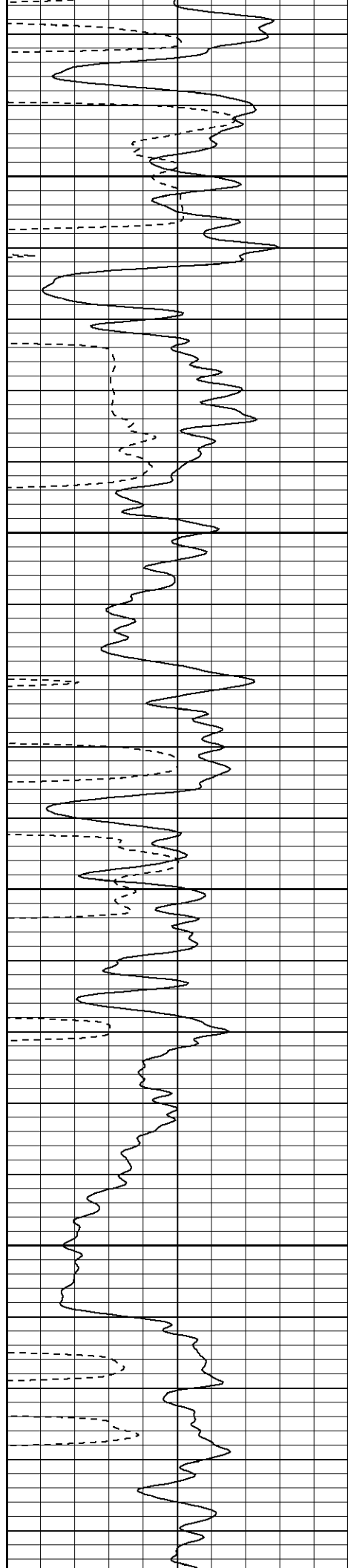
450

Surface Casing  
500

550

600



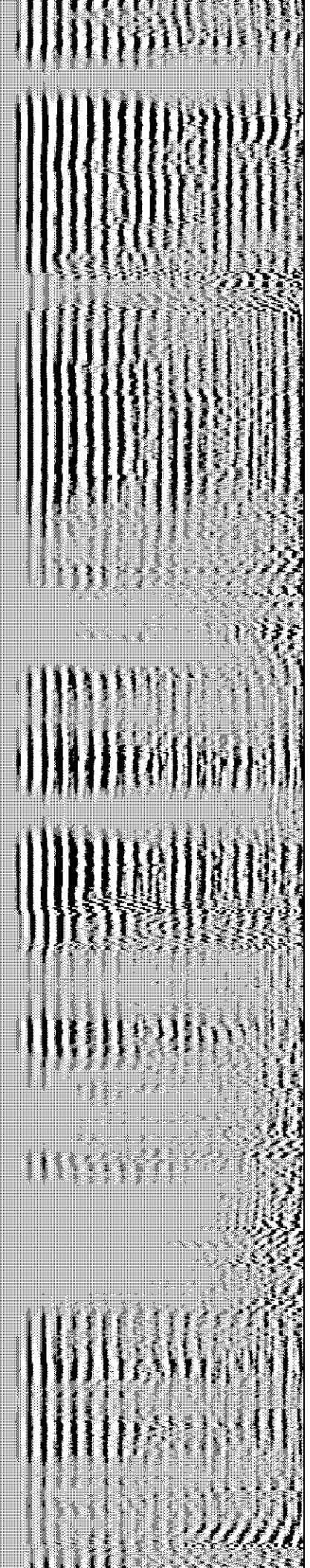
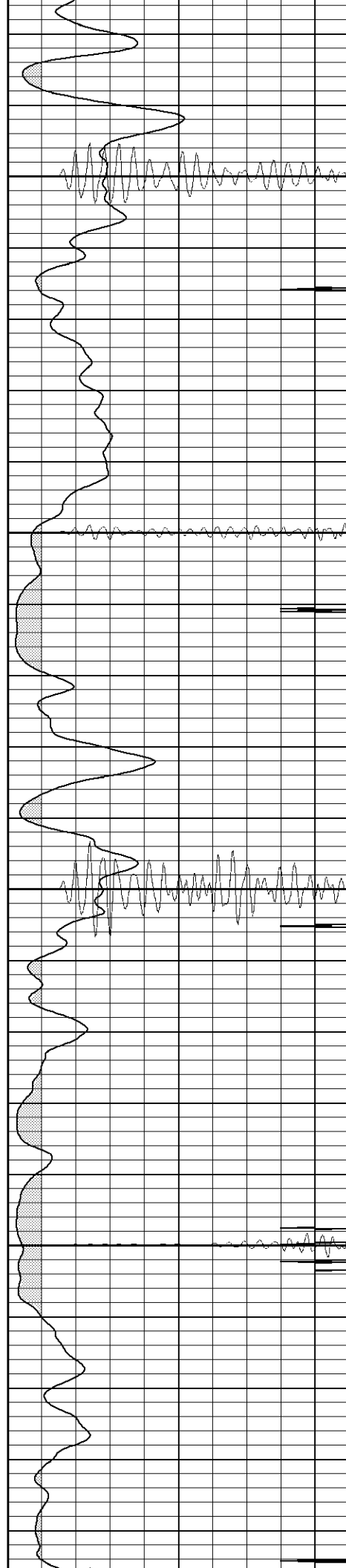


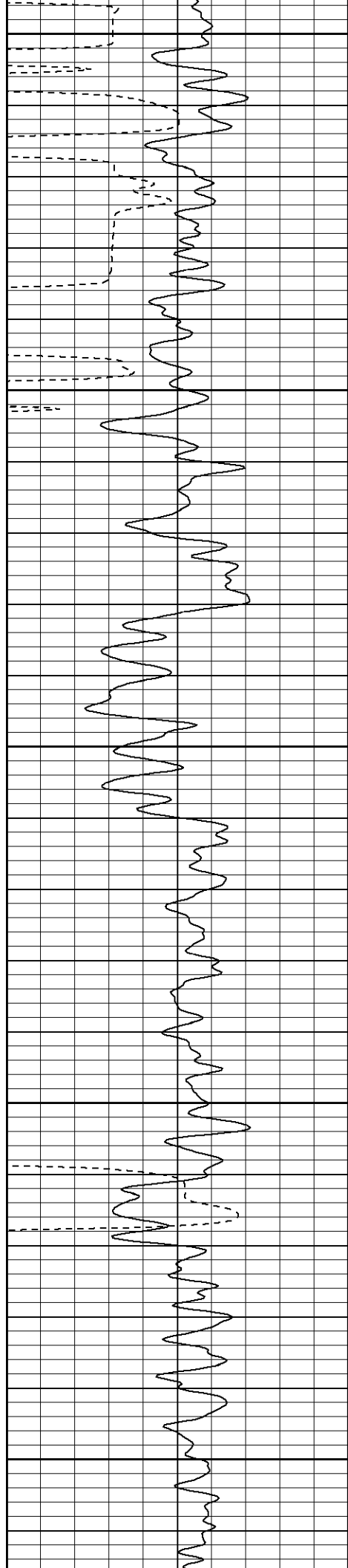
650

700

750

800





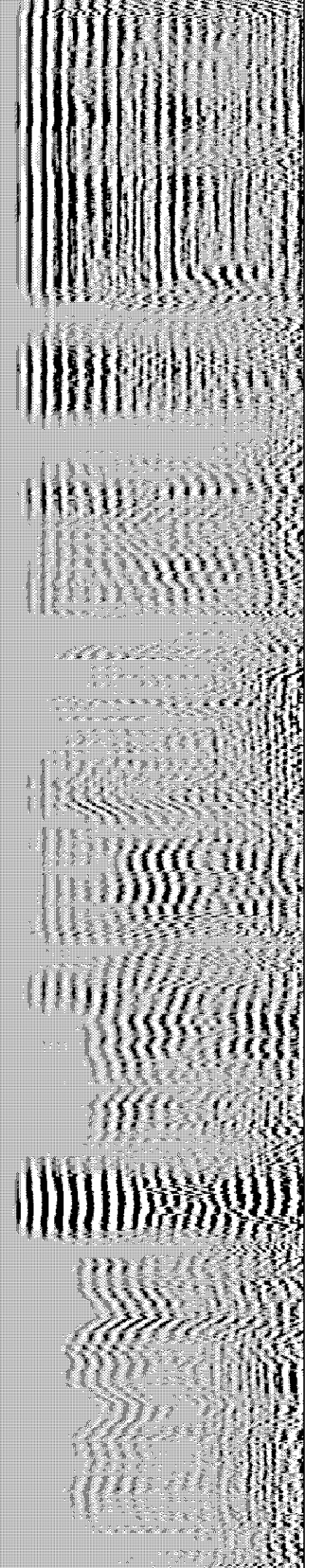
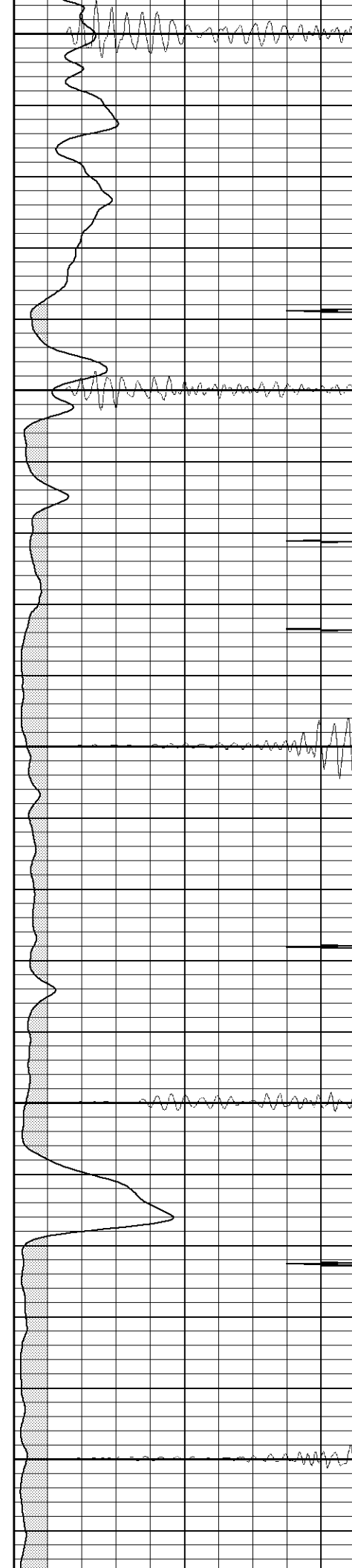
850

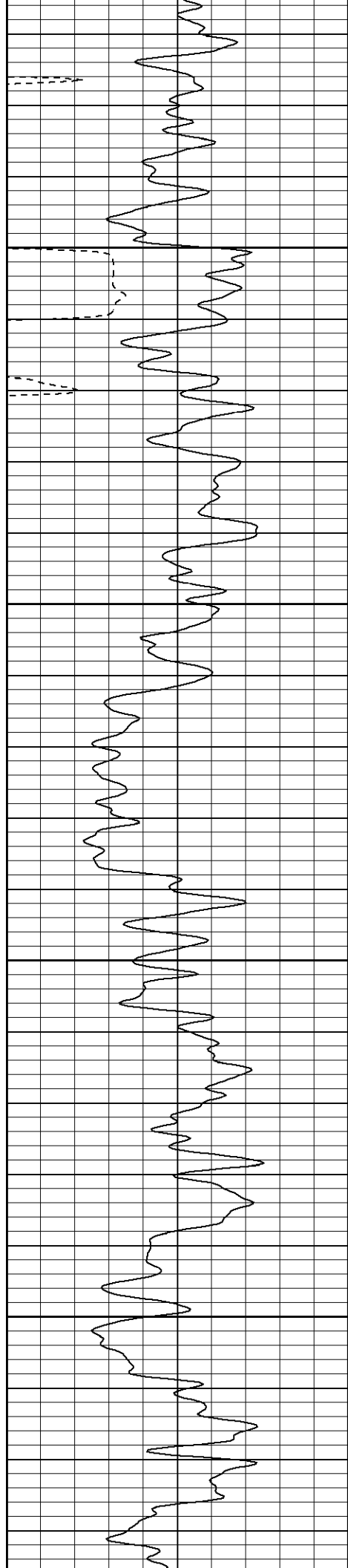
900

950

1000

1050



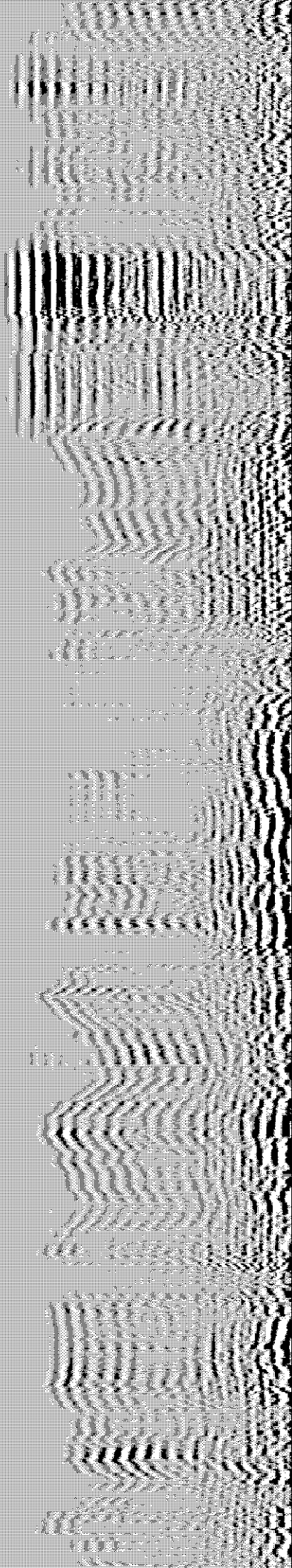
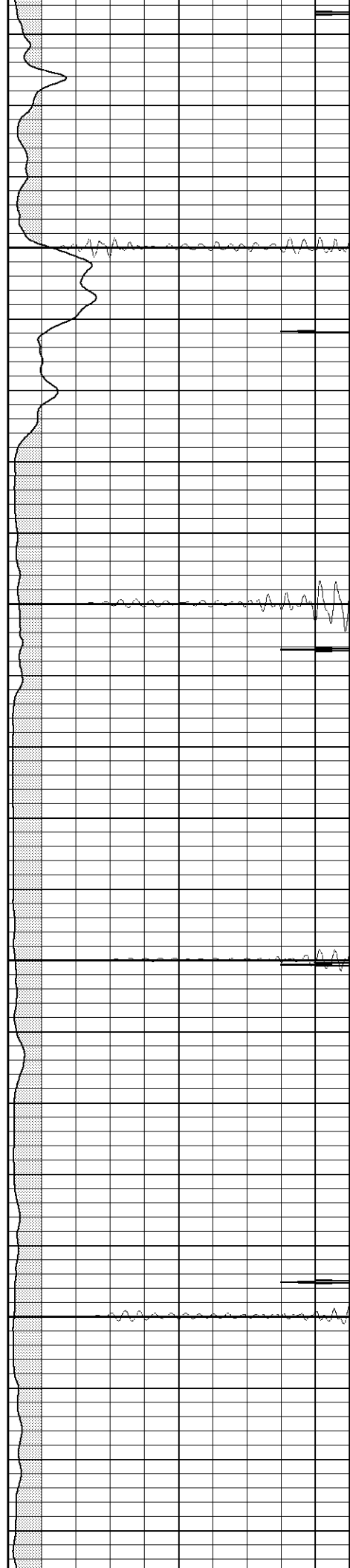


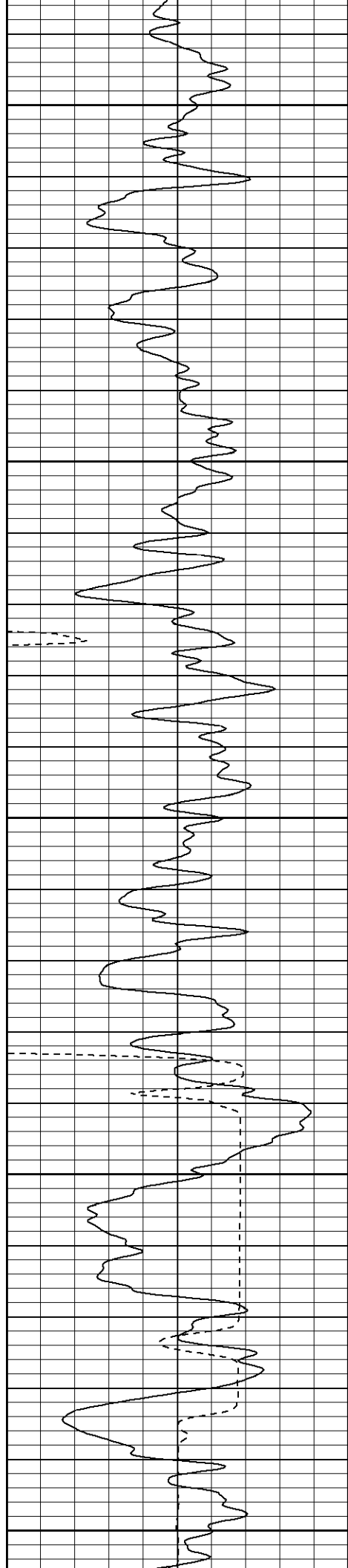
1100

1150

1200

1250





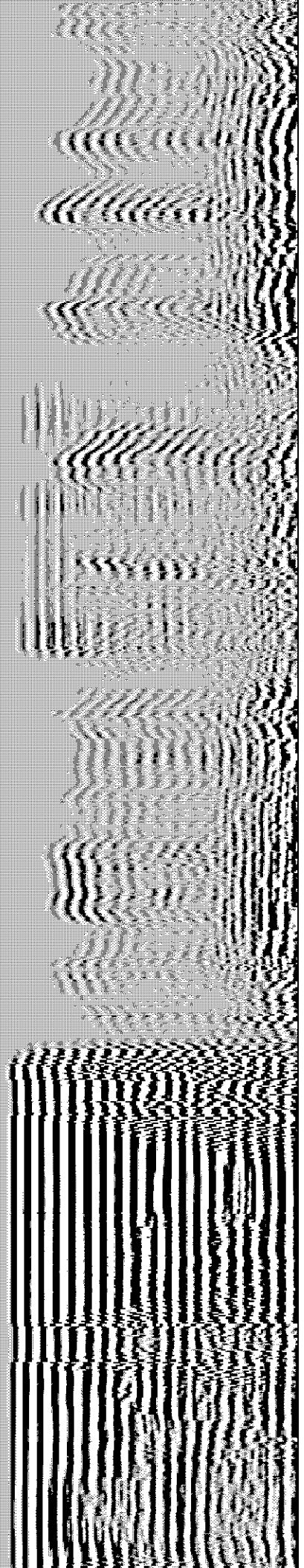
1300

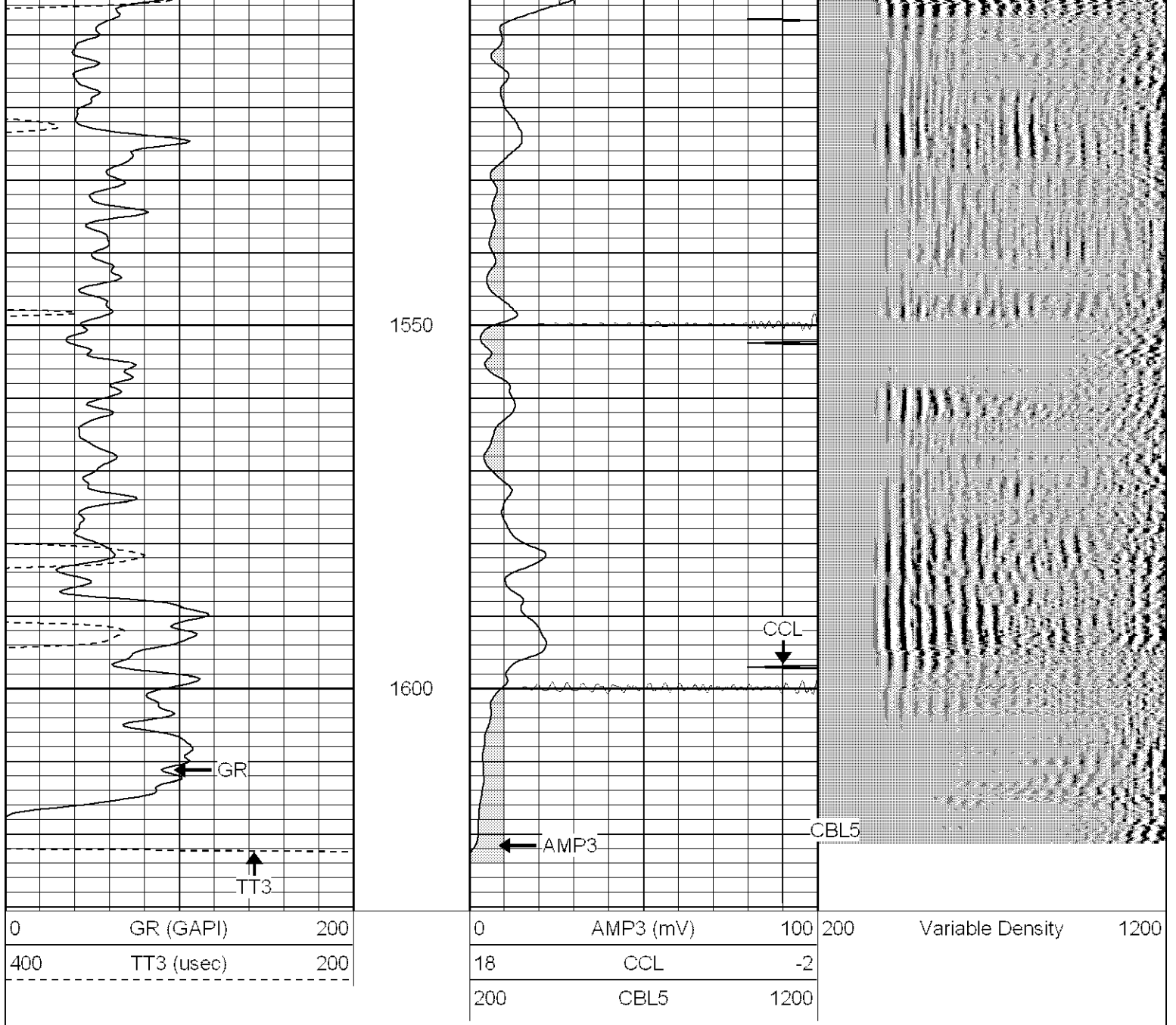
1350

1400

1450

1500



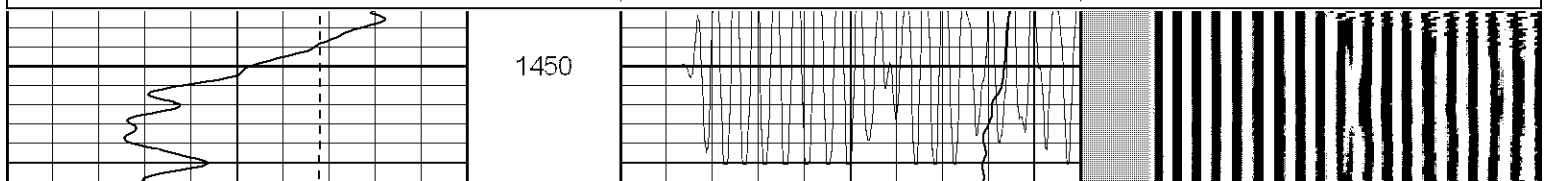


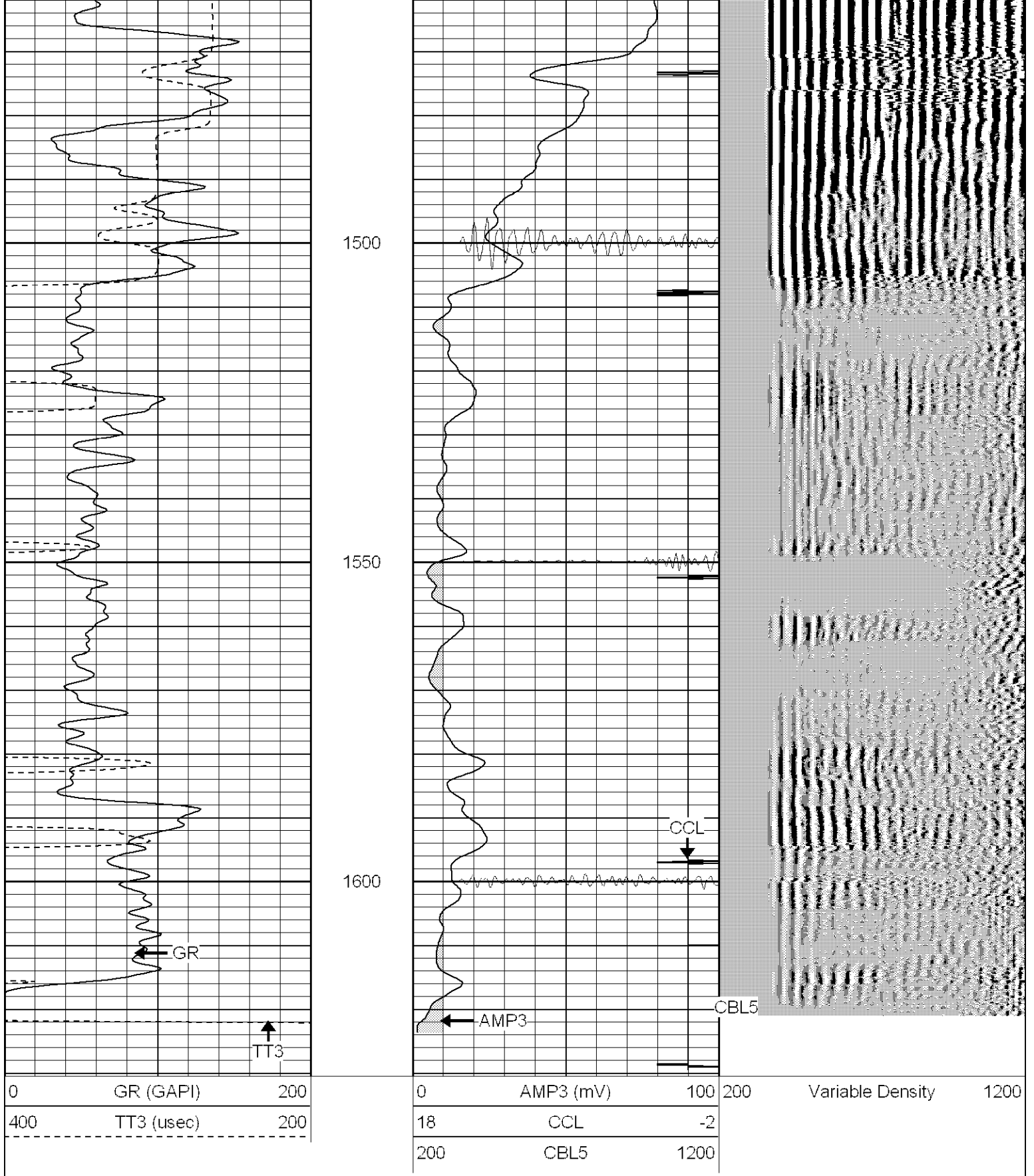
**SUPERIOR**  
 Black Lick, Pa.  
 Mercer, Pa.  
 Wooster, Oh.  
 Cleveland, Ok.  
 Trinidad, Co.

# Repeat Section 0 PSI

Database File: ne36-10b32607.db  
 Dataset Pathname: pass1  
 Presentation Format: cblrt  
 Dataset Creation: Mon Mar 26 09:31:31 2007 by Log Open-Cased 061129  
 Charted by: Depth in Feet scaled 1:240

0	GR (GAPI)	200	0	AMP3 (mV)	100	200	Variable Density	1200
400	TT3 (usec)	200	18	CCL	-2			
			200	CBL5	1200			





Calibration Report

Database File: ne36-10b32607.db  
 Dataset Pathname: pass1  
 Dataset Creation: Mon Mar 26 09:31:31 2007 by Log Open-Cased 061129

Cement Bond Log Calibration Report

Serial Number: Titan5  
 Tool Model: T5

Performed: Mon Mar 26 09:30:06 2007

Depth: 0 ft  
Casing Diameter: 0 in

3' Spacing                      5' Spacing

Signal Zero: 0                      0                      mV  
Calibrated Amplitude: 85                      85                      mV  
Reading at Signal Zero: -0.02                      0.01                      V  
Reading in Free Pipe: 1.1                      1.8                      V

Gain: 75.8929                      47.486  
Offset: 1.51786                      -0.47486

Gamma Ray Calibration Report

Serial Number: Titan5  
Tool Model: T5  
Performed: Fri Aug 19 14:09:55 2005

Calibrator Value: 1.0                      GAPI

Background Reading: 0.0                      cps  
Calibrator Reading: 1.0                      cps

Sensitivity: 1.0000                      GAPI/cps