



SUPERIOR
Black Lick, Pa.
Mercer, Pa.
Wooster, Oh.
Cleveland, Ok.
Trinidad, Co.

CEMENT BOND GAMMA RAY

Company XTO Energy Inc.
Well Apache Canyon 18-16
Field Purgatorie River
County Las Animas
State CO

Company XTO Energy Inc.
Well Apache Canyon 18-16
Field Purgatorie River
County Las Animas State CO

Location: API #: 05 071 08928 00

9' FSL & 228' FEL

SEC 18 TWP 34S RGE 67W

Permanent Datum Ground Level Elevation 7898'
Log Measured From Ground Level
Drilling Measured From Ground Level

Other Services
PRES
CONTROL

Elevation

K.B. -----
D.F. -----
G.L. 7898'

Date

2/13/07

Run Number

one

Depth Driller

2455'

Depth Logger

2384'

Bottom Logged Interval

2380'

Top Log Interval

Surf.

Open Hole Size

7 7/8"

Type Fluid

water

Density / Viscosity

///

Max. Recorded Temp.

///

Estimated Cement Top

104'

Time Well Ready

1:45

Time Logger on Bottom

2:00

Equipment Number

0703

Location

Trinidad

Recorded By

Worley

Witnessed By

Mr Polley

Borehole Record

Bit

From

To

Size

Weight

From

To

Casing Record

Size

Wgt/Ft

Top

Bottom

Surface String

8 5/8"

00

587'

Prot. String

5 1/2"

00

NA

Production String

5 1/2"

00

NA

Liner

5 1/2"

00

NA

NA

NA

NA

NA

NA

NA

NA

NA

NA

NA

NA

NA

NA

NA

NA

NA

NA

NA

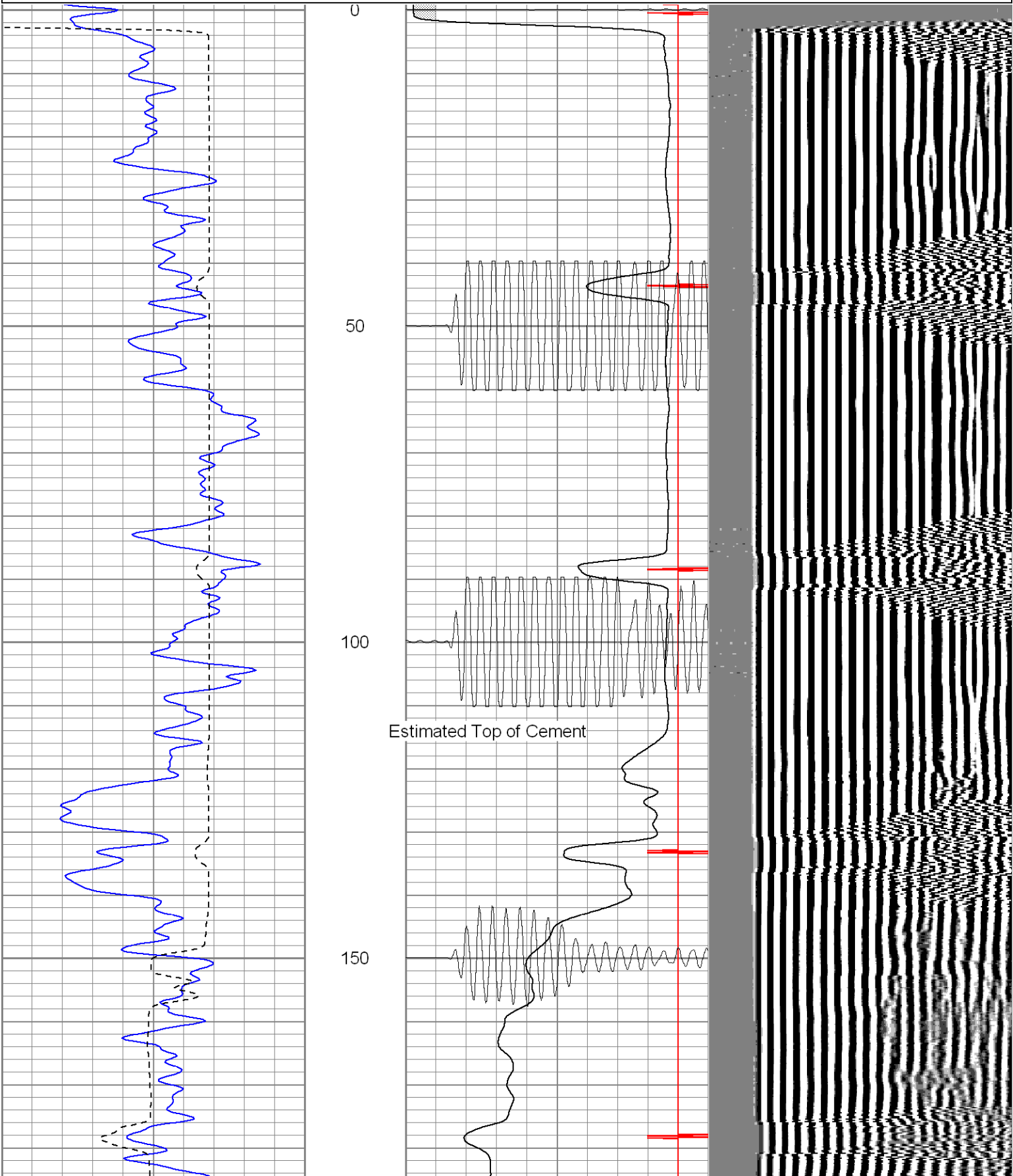
SUPERIOR

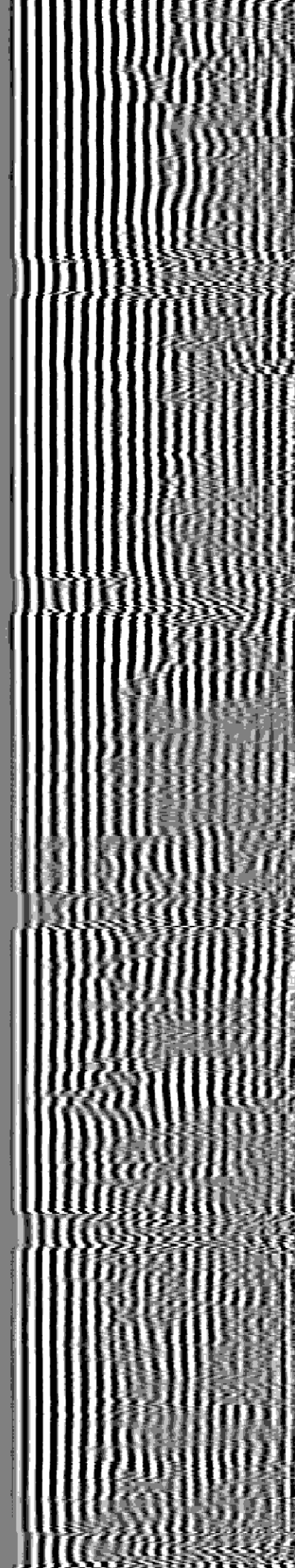
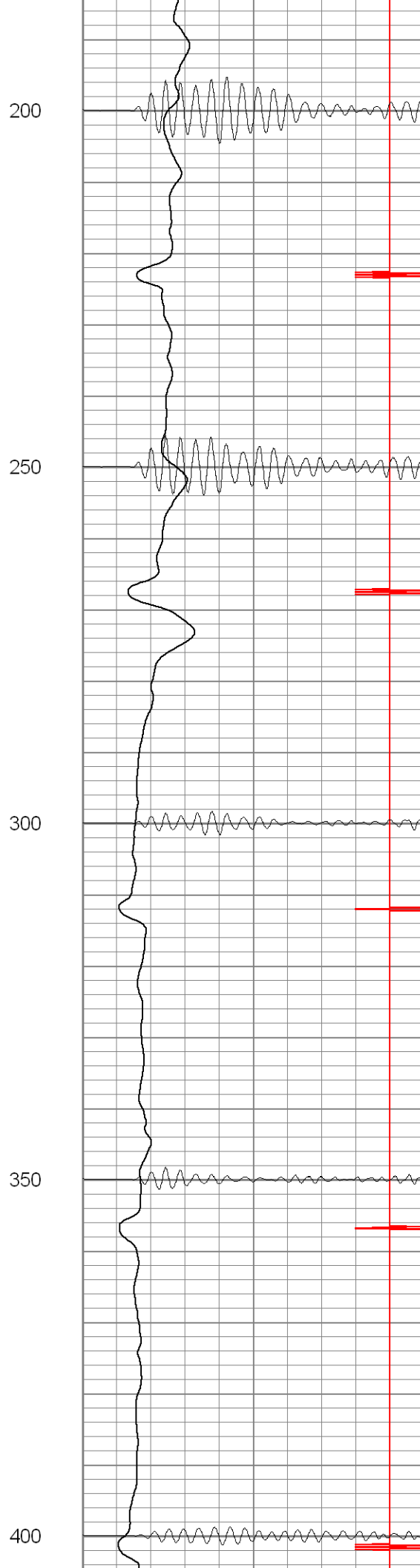
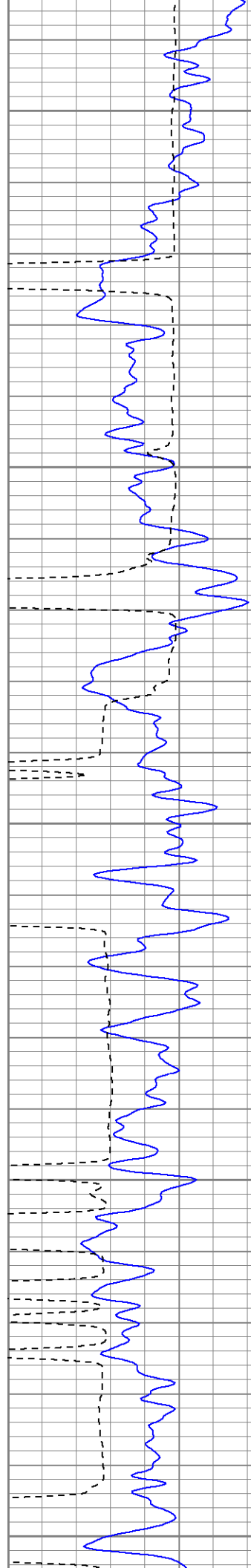
Black Lick, Pa.
Mercer, Pa.
Wooster, Oh.
Cleveland, Ok.
Trinidad, Co.

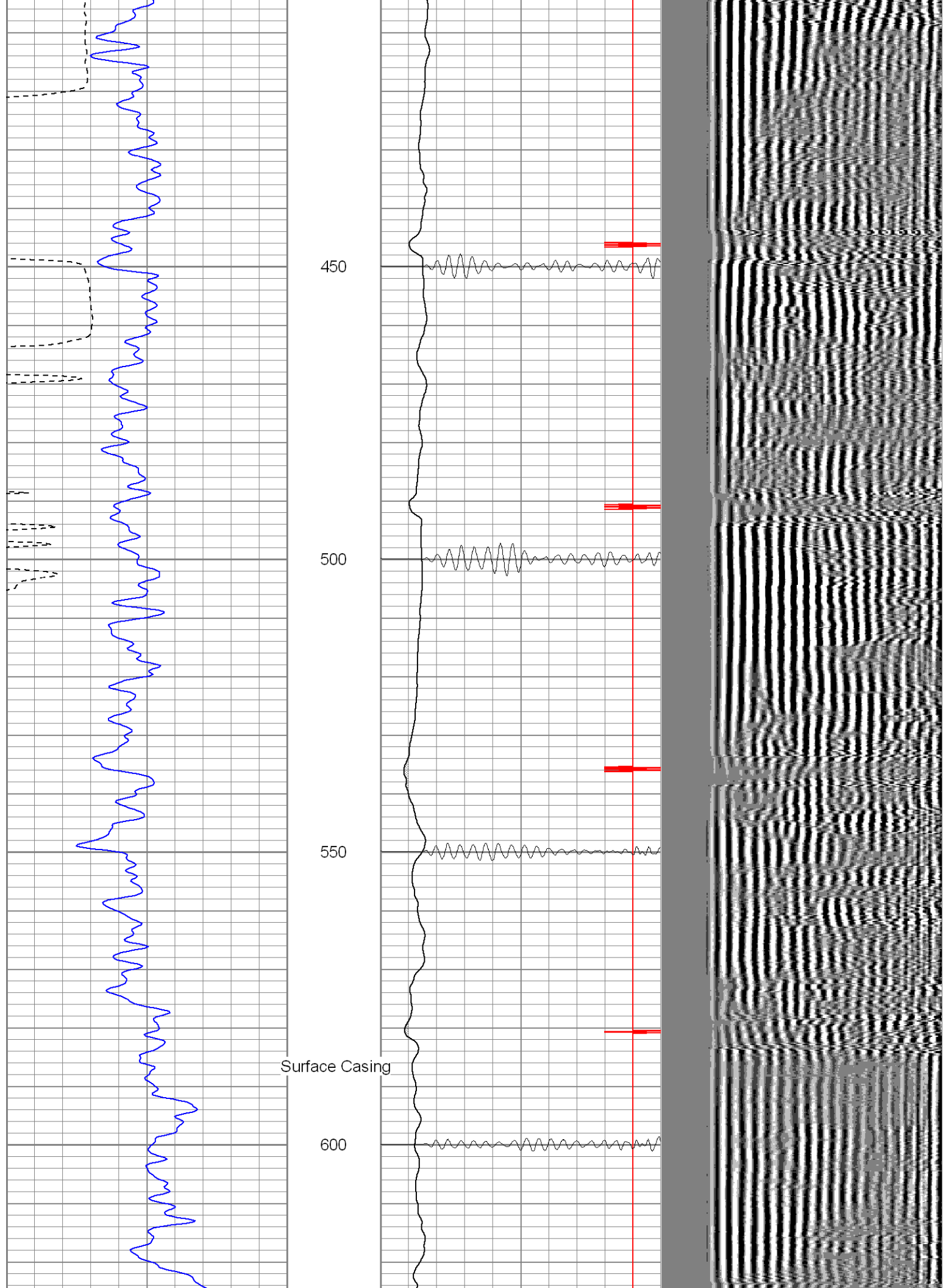
Main Pass

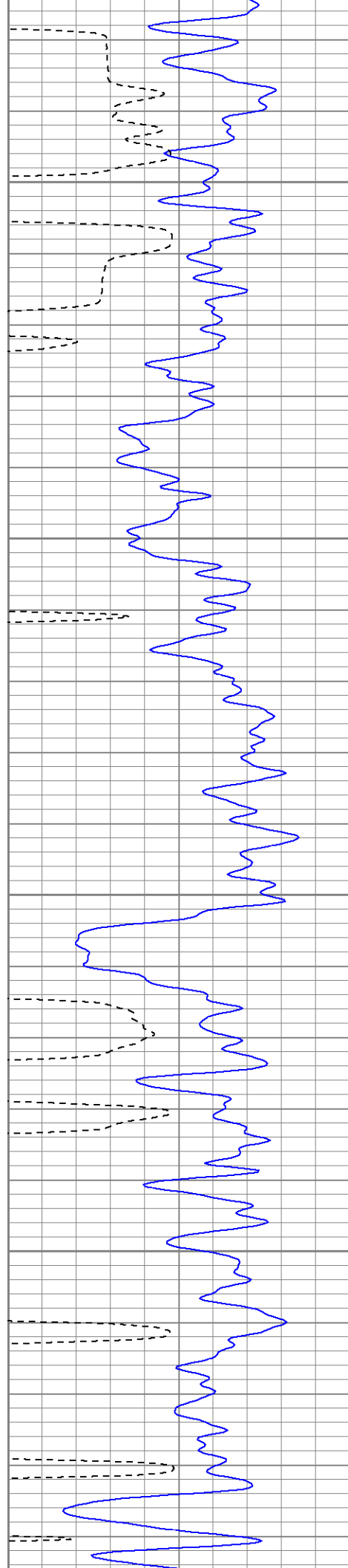
Database File: ac18-16b21307.db
Dataset Pathname: pass2
Presentation Format: cblrt
Dataset Creation: Tue Feb 13 14:15:05 2007 by Log Warrior 7.0 STD Cas
Charted by: Depth in Feet scaled 1:240

0	GR (GAPI)	200	0	AMP3 (mV)	100	200	Variable Density	1200
400	TT3 (usec)	200	18	CCL	-2			
			200	CBL5	1200			







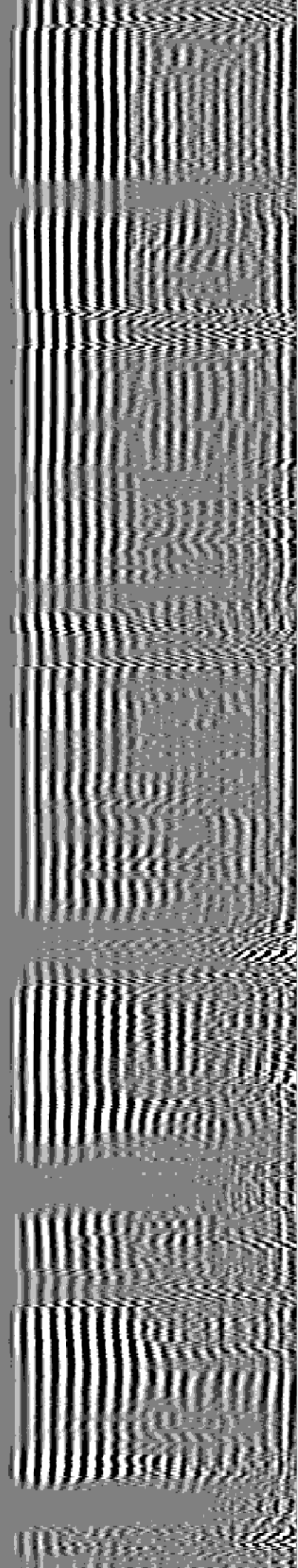


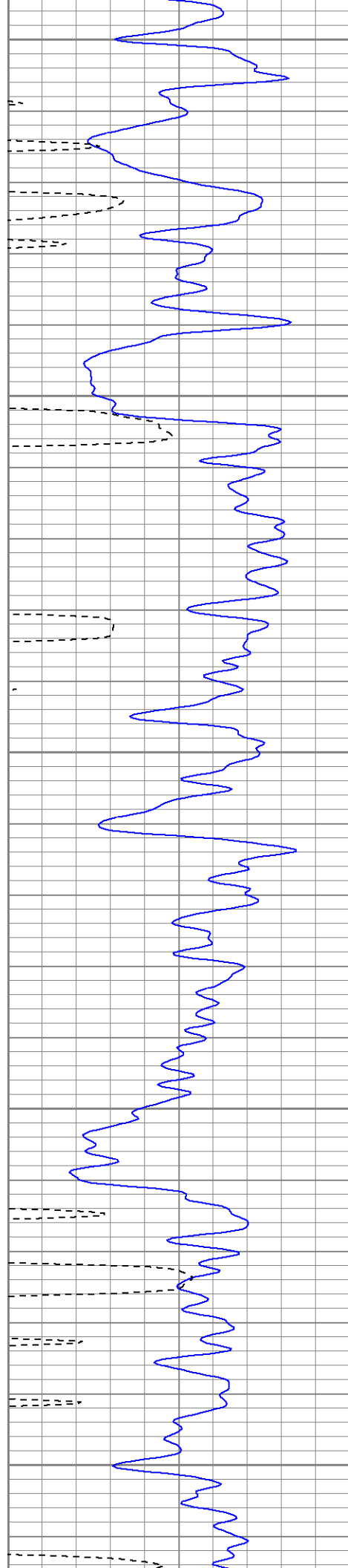
650

700

750

800





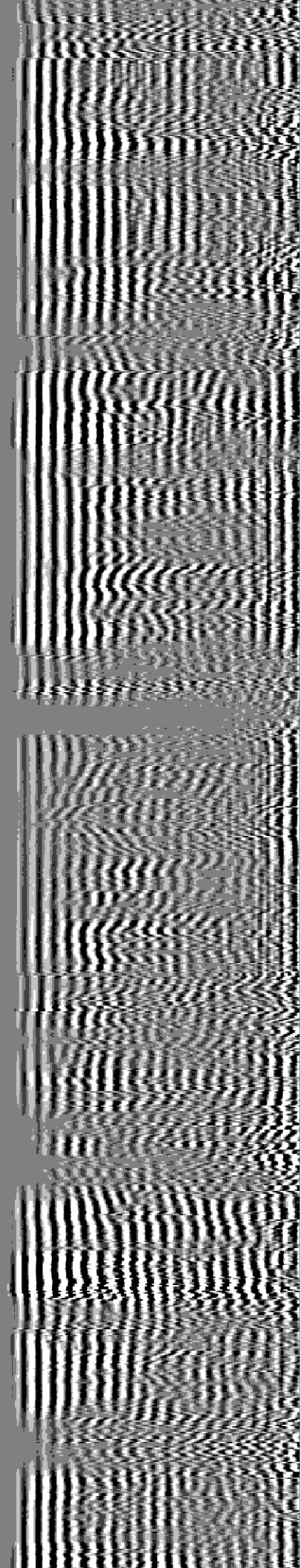
850

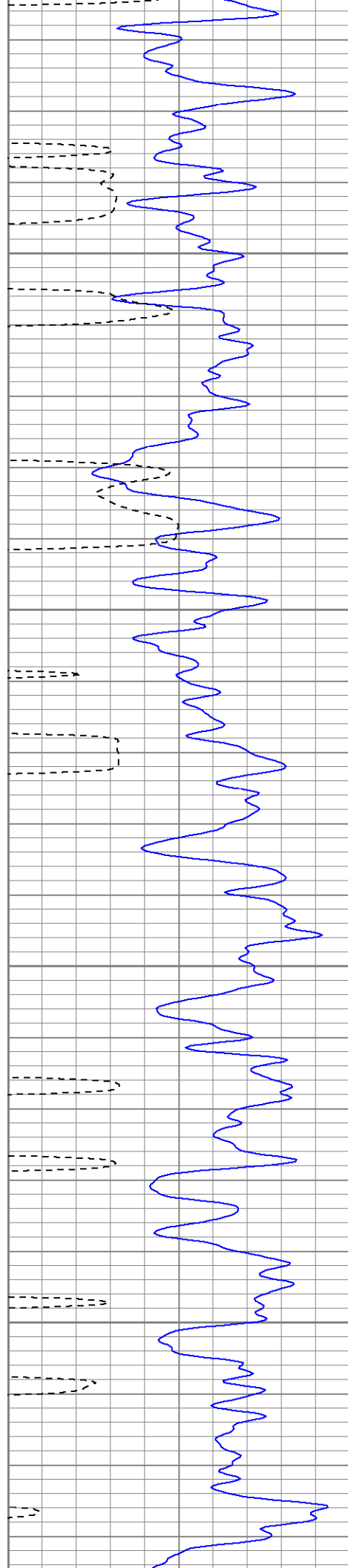
900

950

1000

1050



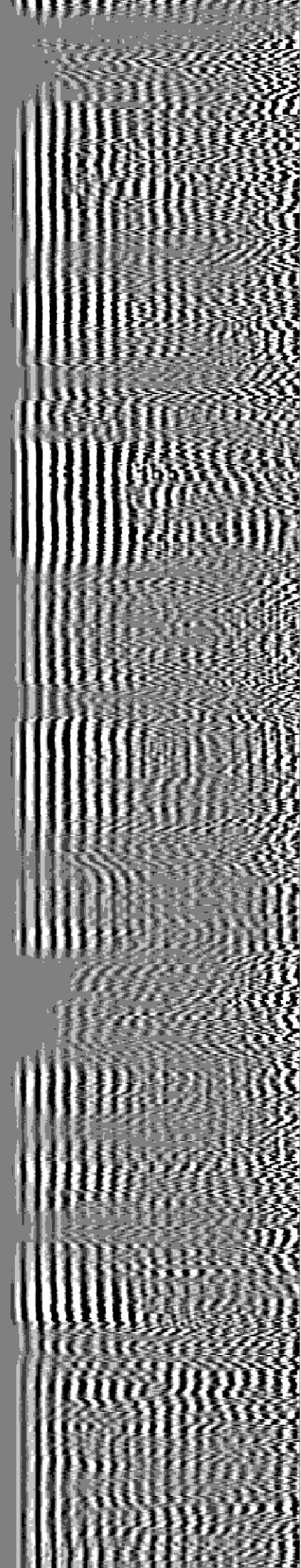
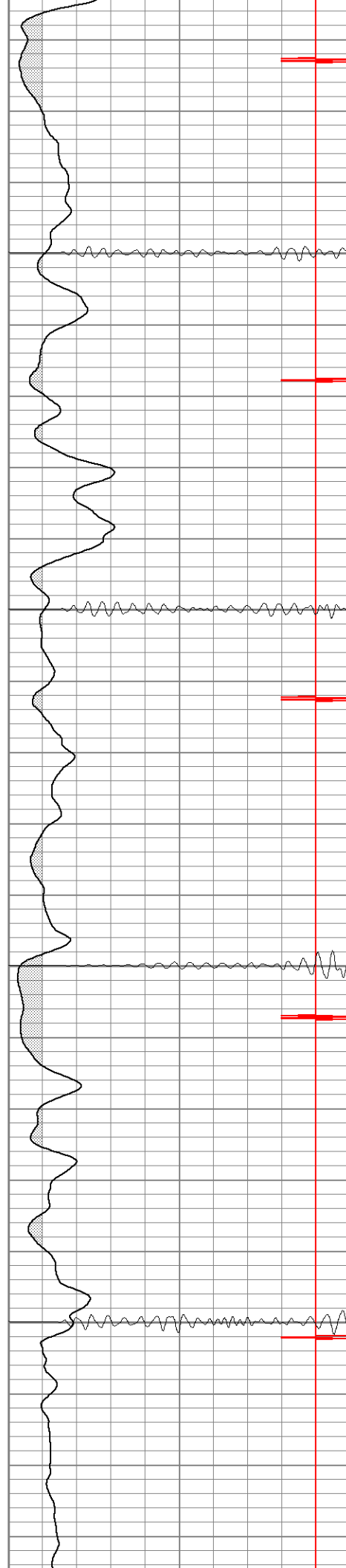


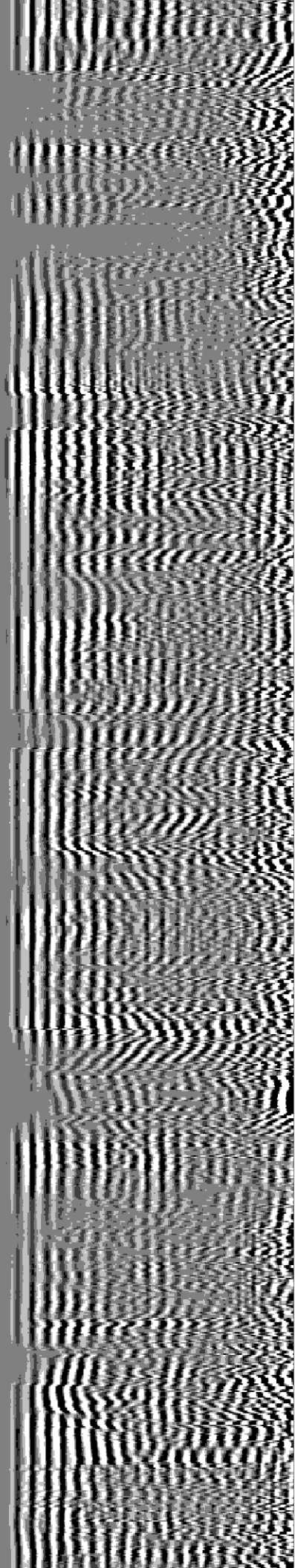
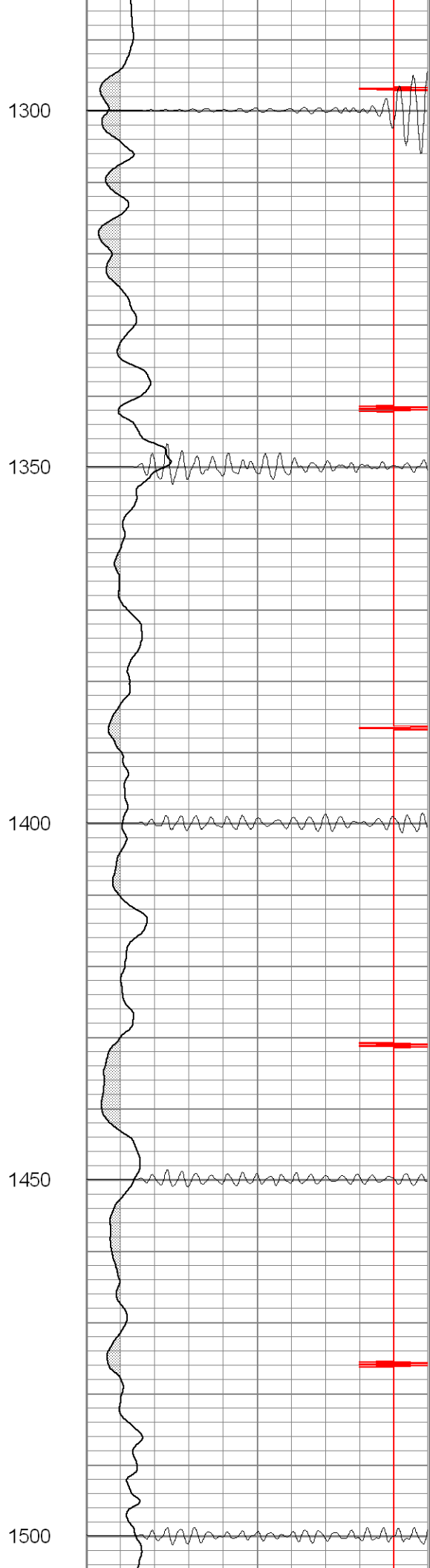
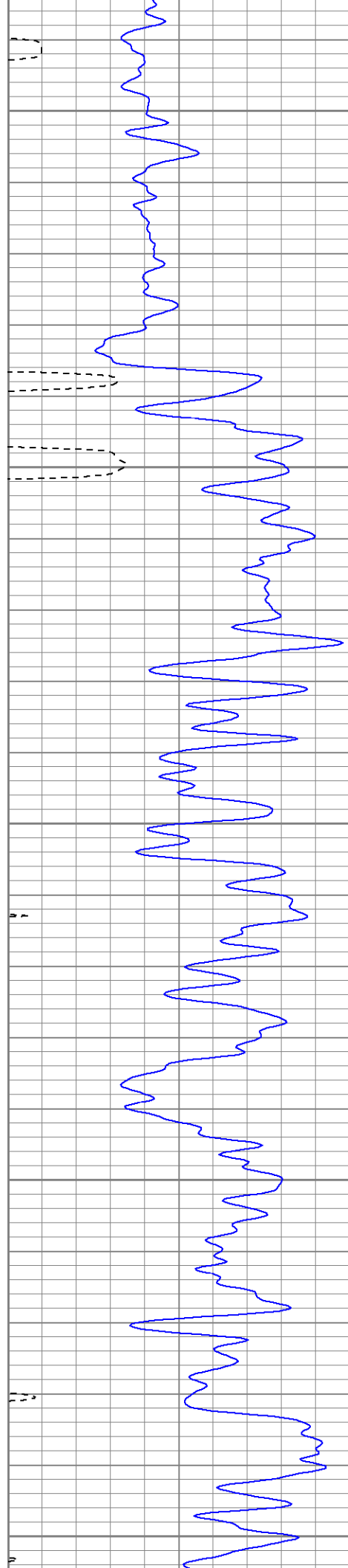
1100

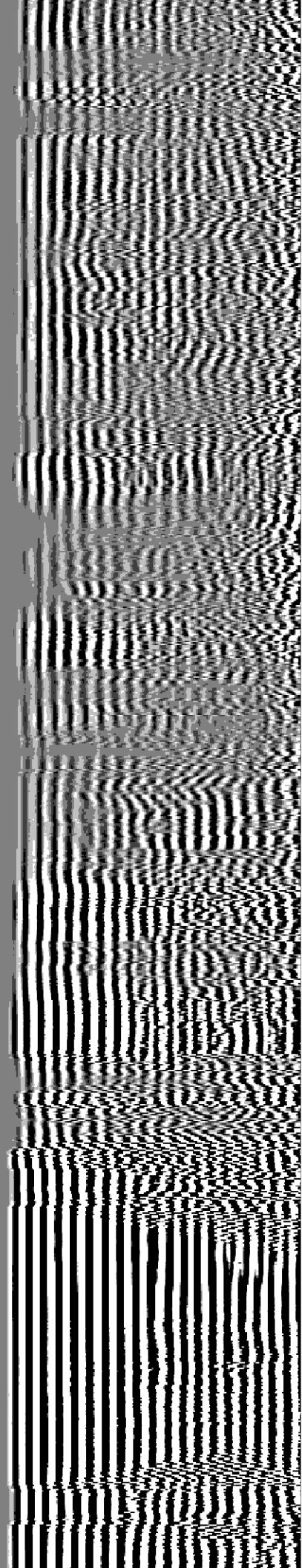
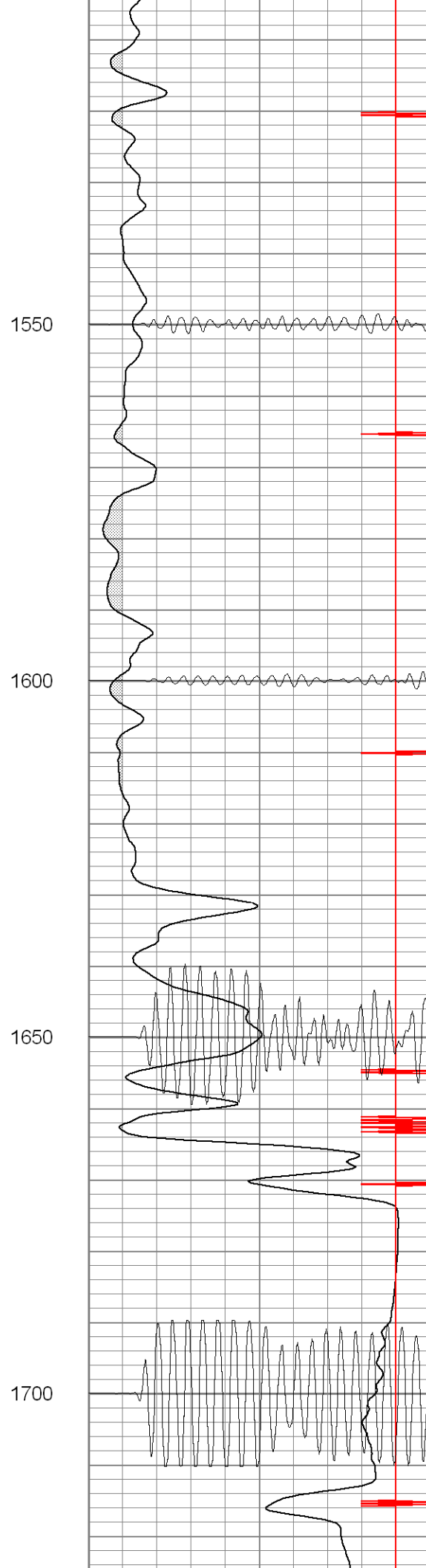
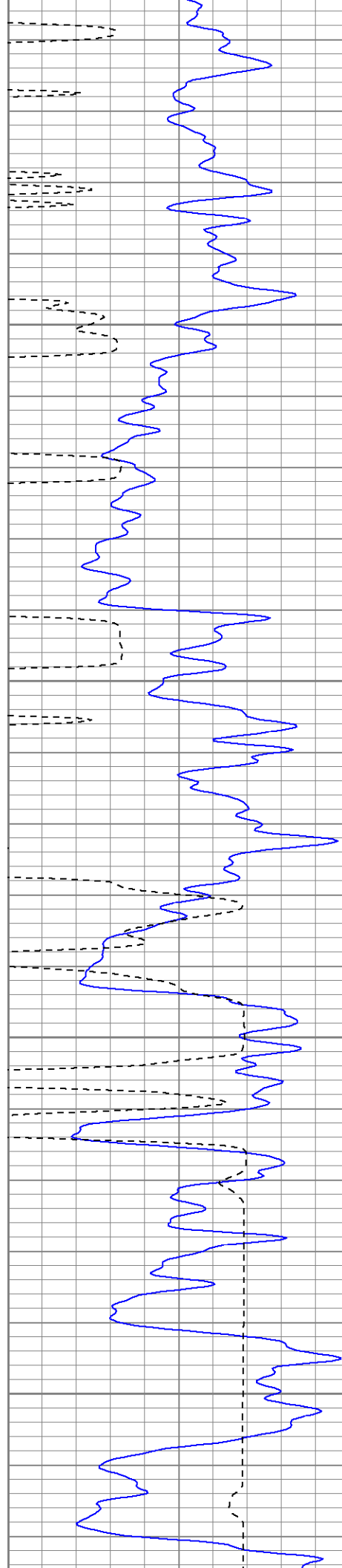
1150

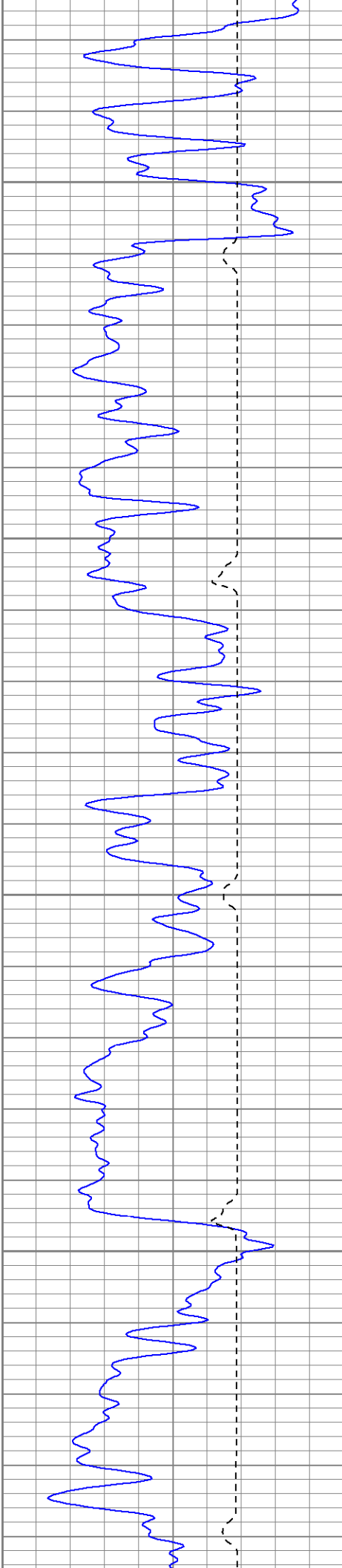
1200

1250







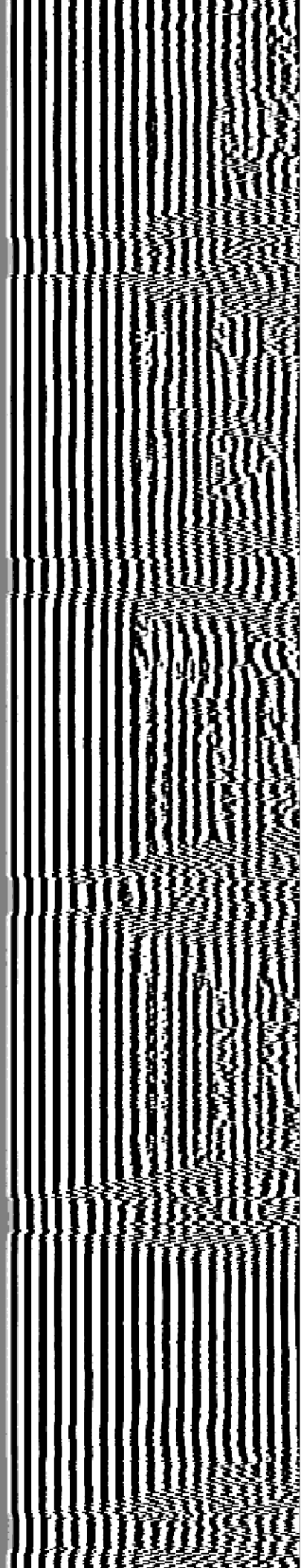
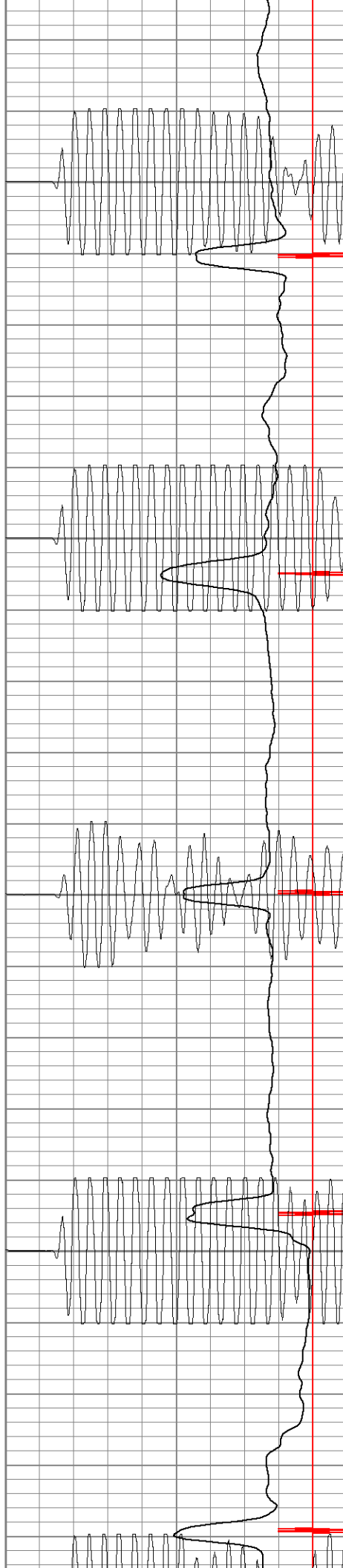


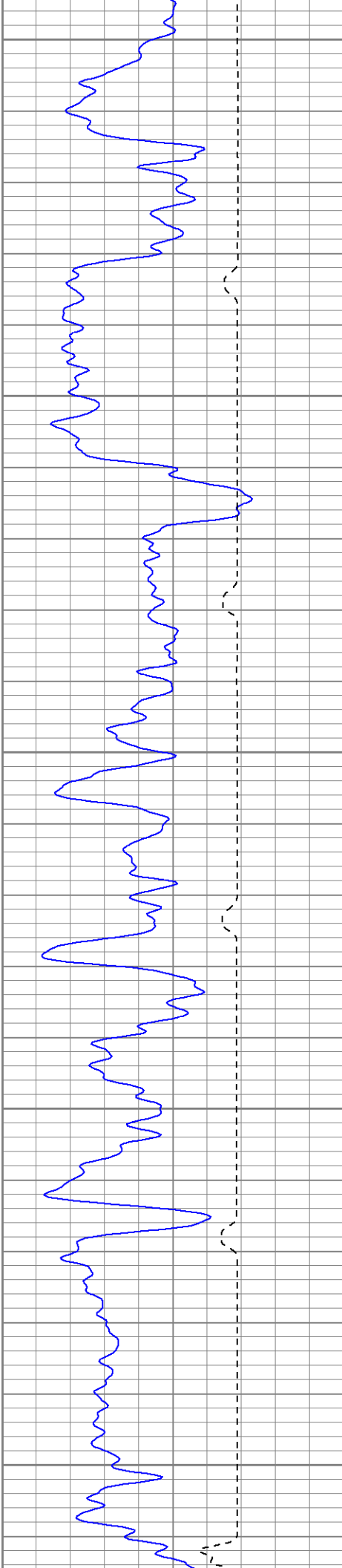
1750

1800

1850

1900





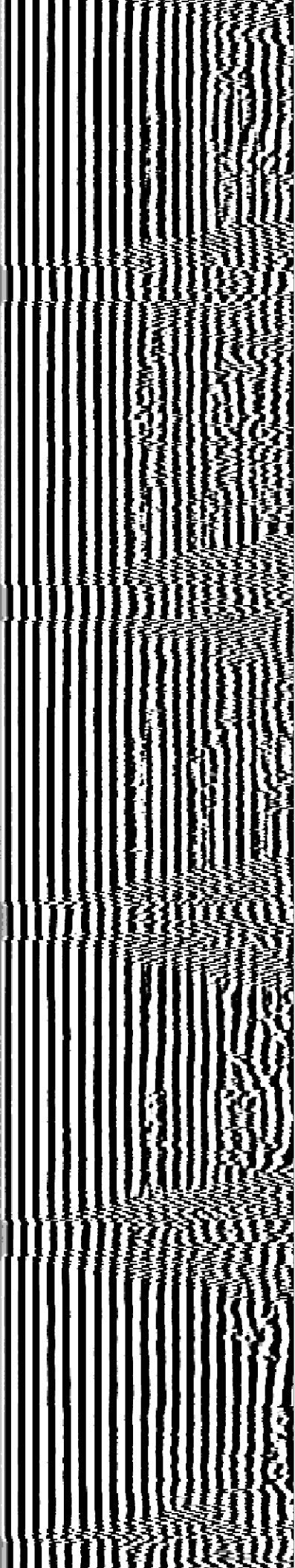
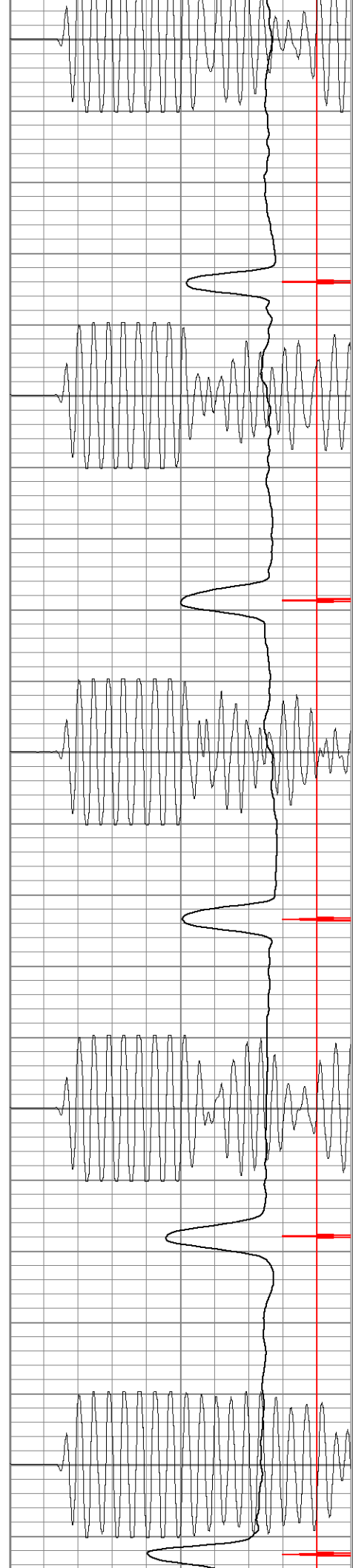
1950

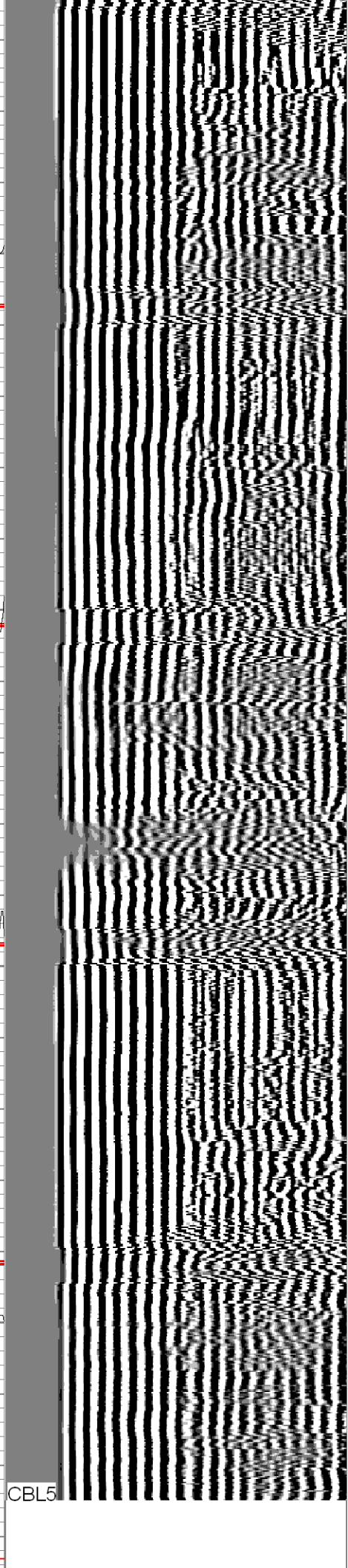
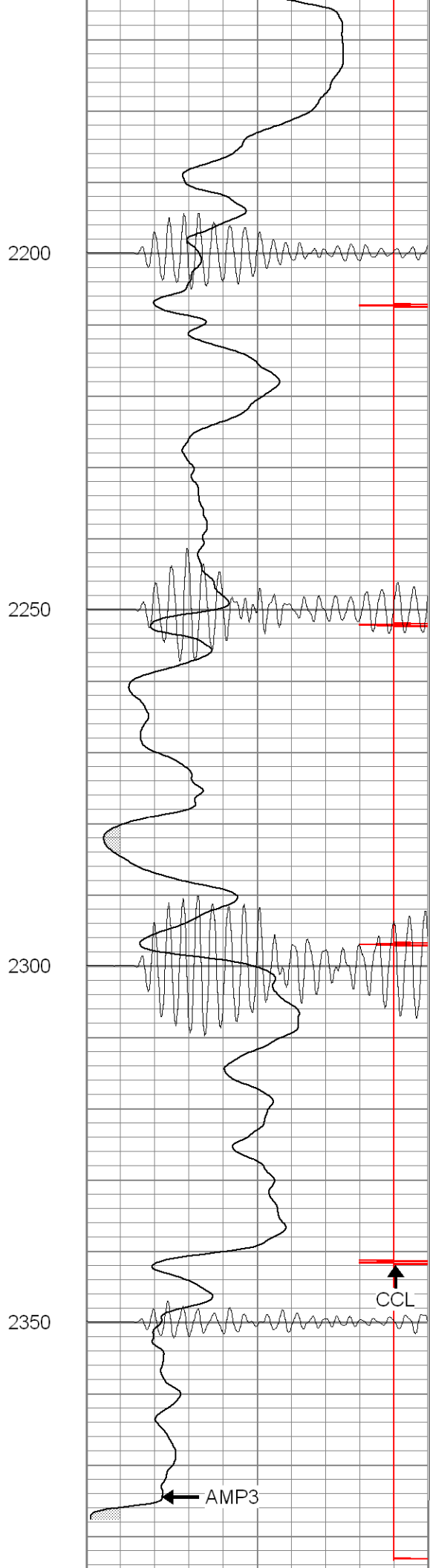
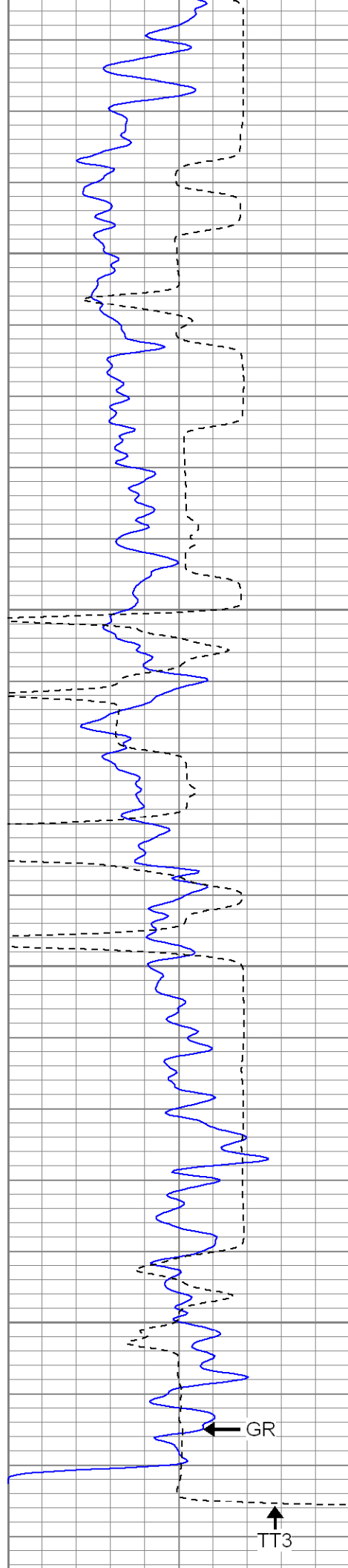
2000

2050

2100

2150





0	GR (GAPI)	200
400	TT3 (usec)	200
<hr/>		

0	AMP3 (mV)	100
18	CCL	-2
200	CBL5	1200

200	Variable Density	1200
-----	------------------	------



SUPERIOR

Black Lick, Pa.
Mercer, Pa.
Wooster, Oh.
Cleveland, Ok.
Trinidad, Co.

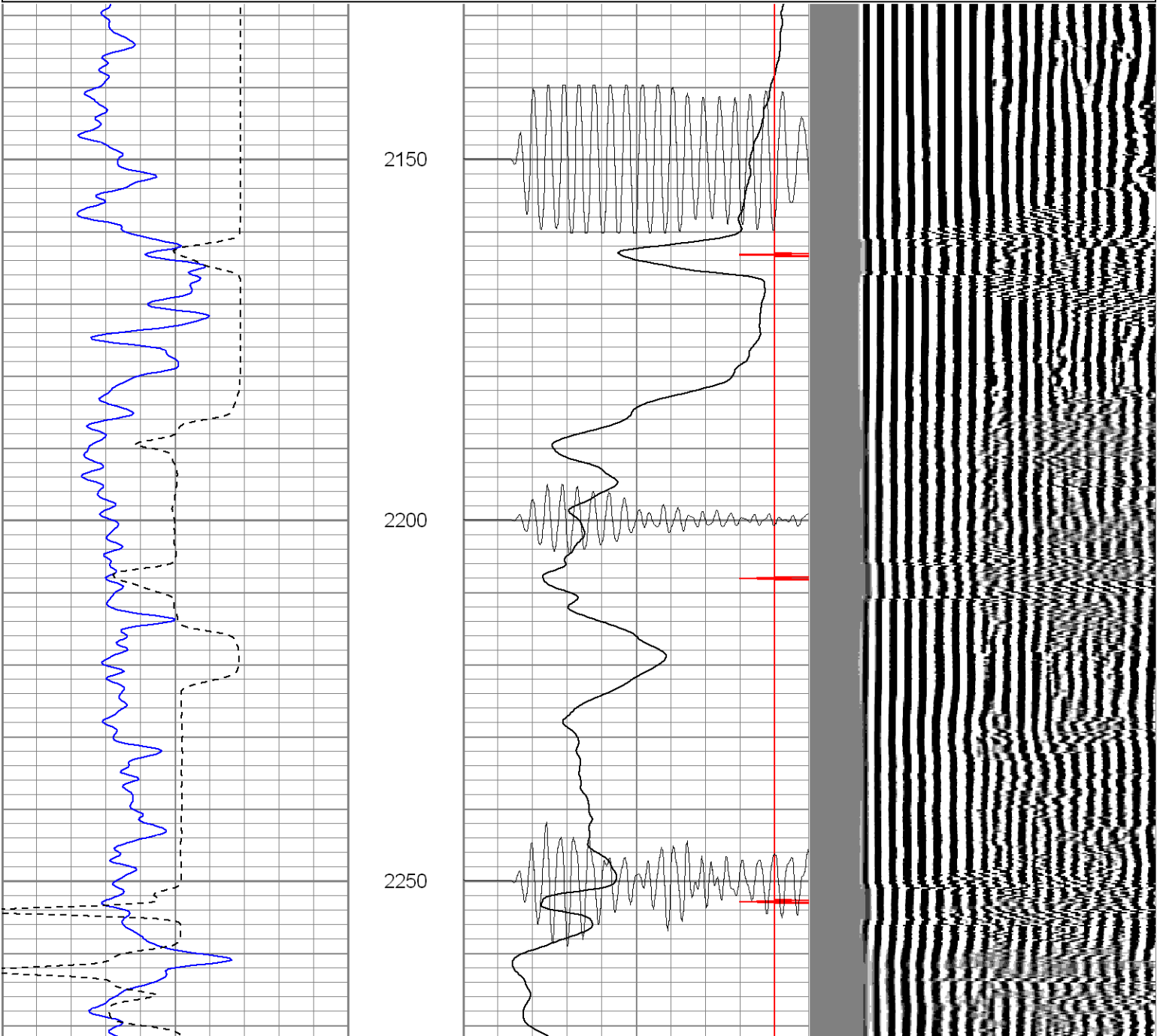
Repeat Section

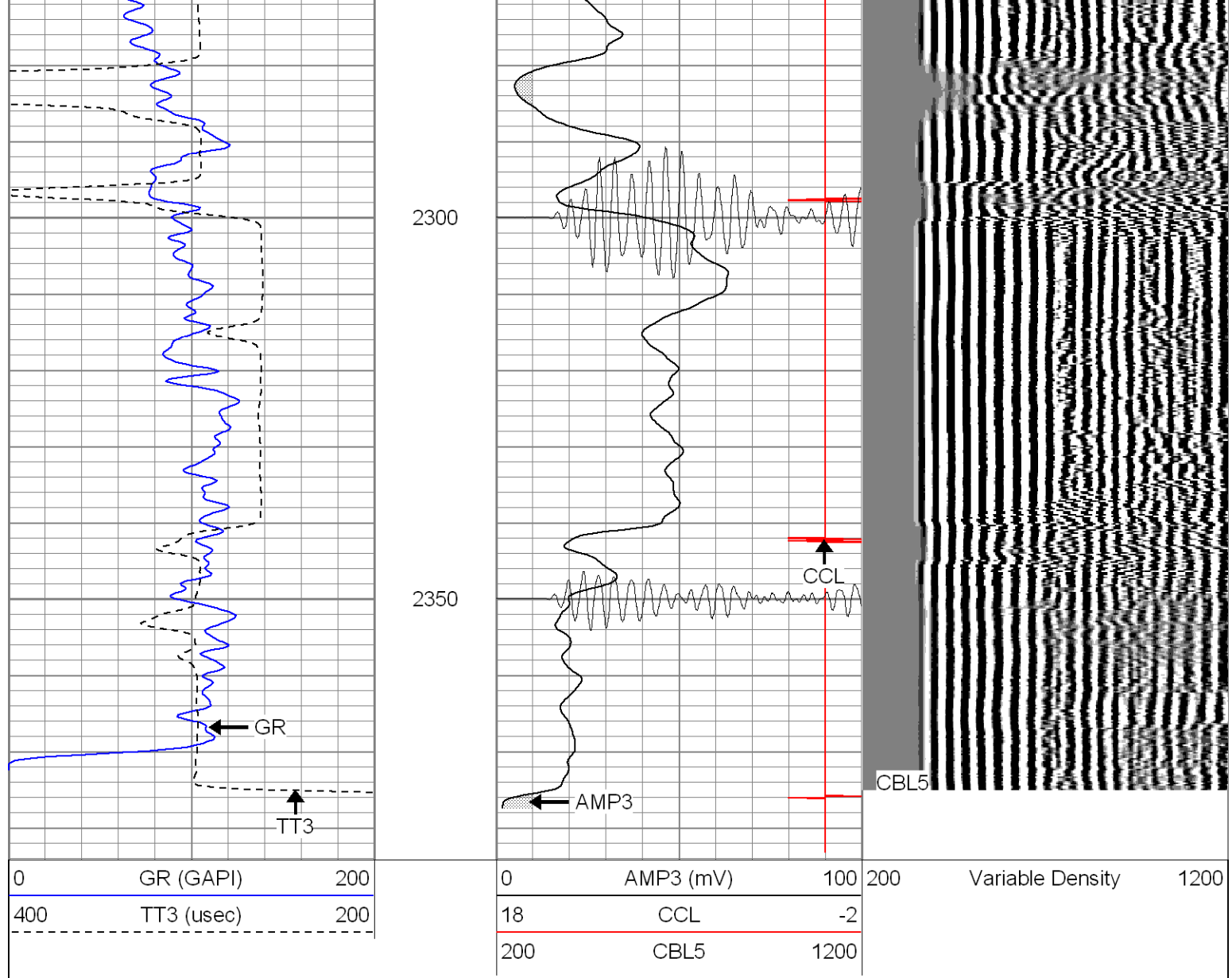
Database File: ac18-16b21307.db
Dataset Pathname: pass1.3
Presentation Format: cblrt
Dataset Creation: Tue Feb 13 14:17:59 2007 by Calc Warrior 7.0 STD Cas
Charted by: Depth in Feet scaled 1:240

0	GR (GAPI)	200
400	TT3 (usec)	200
<hr/>		

0	AMP3 (mV)	100
18	CCL	-2
200	CBL5	1200

200	Variable Density	1200
-----	------------------	------





Cement Bond Log Calibration Report

Serial Number:	Titan5		
Tool Model:	2		
Performed:	Tue Feb 13 12:52:23 2007		
Depth:	0	ft	
Casing Diameter:	0	in	
	3' Spacing	5' Spacing	
Signal Zero:	0	0	mV
Calibrated Amplitude:	85	85	mV
Reading at Signal Zero:	-0.02	0.00866699	V
Reading in Free Pipe:	0.9	1.2	V
Gain:	92.3913	71.3486	
Offset:	1.84783	-0.618378	

Gamma Ray Calibration Report

Serial Number:	Titan5	
Tool Model:	T2	
Performed:	Sat Feb 10 07:59:59 2007	
Calibrator Value:	1.0	GAPI

Background Reading:

0.0

cps

Calibrator Reading:

1.0

cps

Sensitivity:

1.2000

GAPI/cps