

Company XTO Energy Inc.
Well Golden Eagle 20-04
Field Purgatoire River
County Las Animas
State Colorado

Company XTO Energy Inc.
Well Golden Eagle 20-04
Field Purgatoire River
County Las Animas
State Colorado

Location: API # : 05 071 08599 00
702' FNL & 487' FWL
SEC 20 TWP 33S RGE 67W
Permanent Datum Ground Level Elevation 7697'
Log Measured From Ground Level
Drilling Measured From Ground Level
Other Services
CDL
NEUTRON
Elevation
K.B. ---
D.F. ---
G.L. 7697'

Date	12-04-05
Run Number	One
Depth Driller	1205'
Depth Logger	1056'
Bottom Logged Interval	1055'
Top Log Interval	12.75 Conductor
Casing Driller	12.75 @ 20'
Casing Logger	18'
Bit Size	1 1/2"
Type Fluid in Hole	Water
Density / Viscosity	///
pH / Fluid Loss	///
Source of Sample	///
Rm @ Meas. Temp	///
Rmf @ Meas. Temp	///
Rmc @ Meas. Temp	///
Source of Rmf / Rmc	///
Rm @ BHT	///
Time Circulation Stopped	11:15 A.M.
Time Logger on Bottom	12:55 P.M.
Maximum Recorded Temperature	82 DEG F
Equipment Number	T720
Location	Trinidad
Recorded By	R. Taylor
Witnessed By	Mr. Don Johnson

<<< Fold Here >>>

All interpretations are opinions based on inferences from electrical or other measurements and we cannot and do not guarantee the accuracy or correctness of any interpretation, and we shall not, except in the case of gross or willful negligence on our part, be liable or responsible for any loss, costs, damages, or expenses incurred or sustained by anyone resulting from any interpretation made by any of our officers, agents or employees. These interpretations are also subject to our general terms and conditions set out in our current Price Schedule.

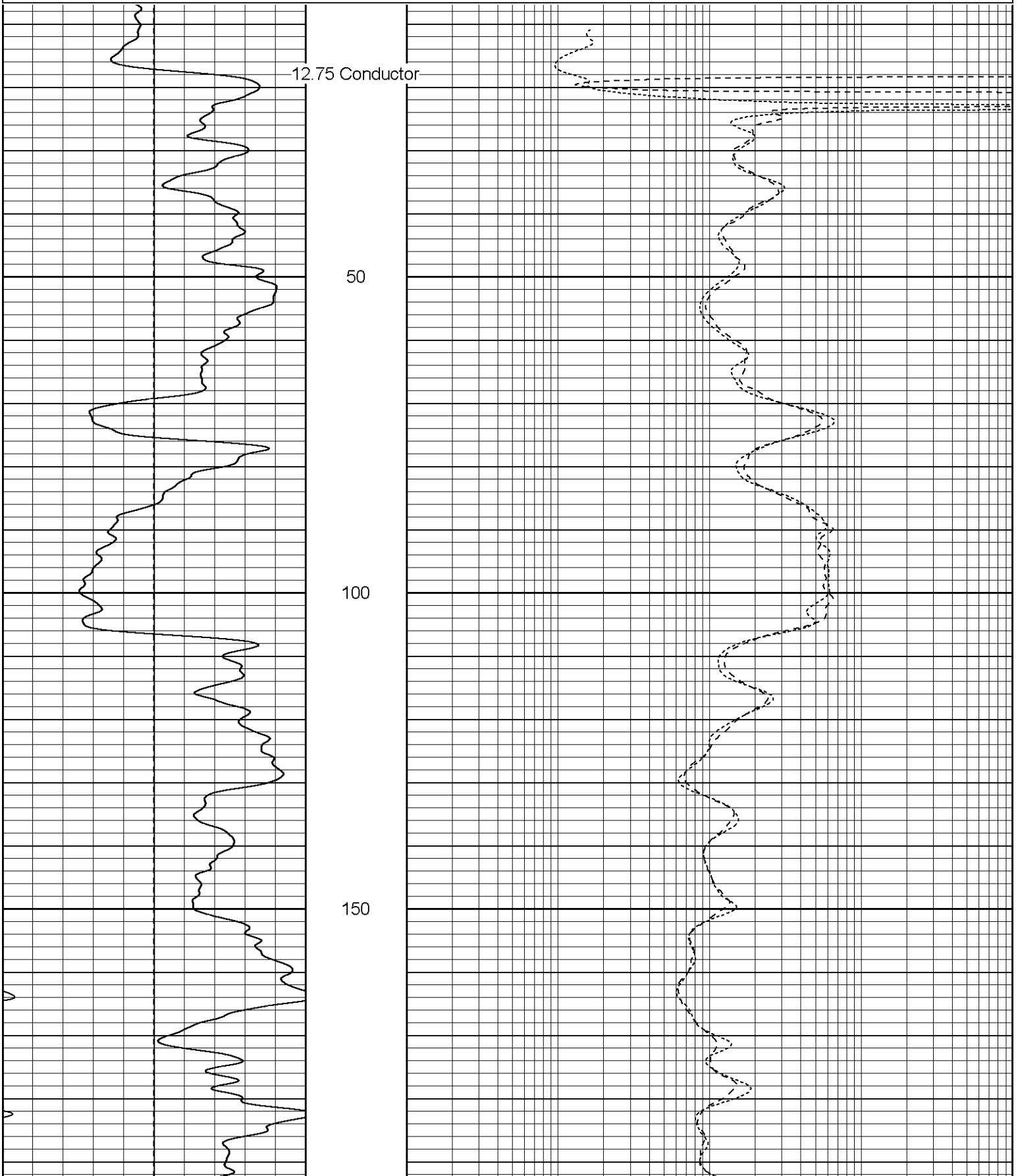
Comments

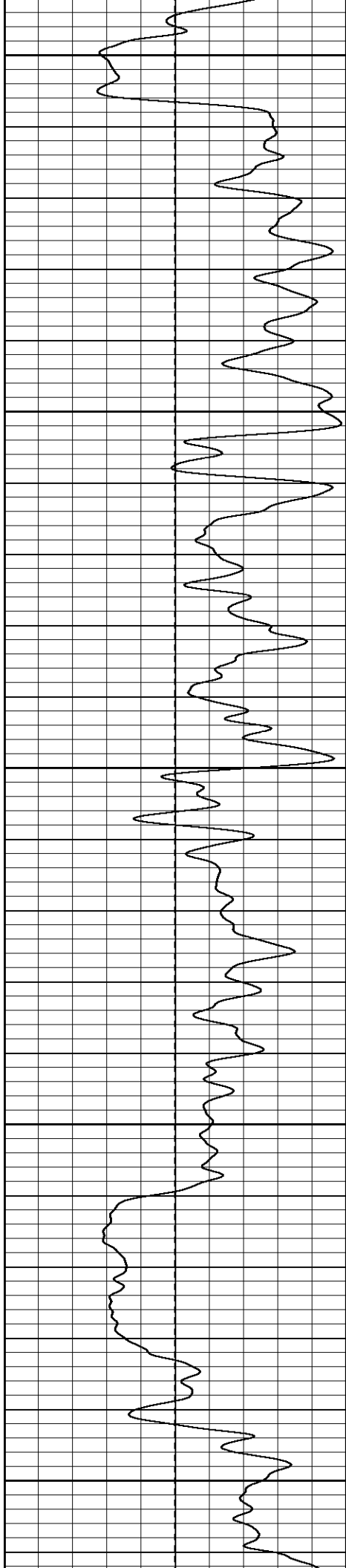
Well Directions:
4 Miles Past Weston On Hwy 12. Right thru Gate. Stay On Main Rd To T. Left, Stay Left Up Hill To Location

Database File: xtoge2004120405.db
 Dataset Pathname: pass2.2
 Presentation Format: dil
 Dataset Creation: Sun Dec 04 13:55:38 2005 by Calc Warrior 7.0 STD Ope
 Charted by: Depth in Feet scaled 1:240

0	GR (GAPI)	200
-100	SP (mV)	100

0.2	RILM (Ohm-m)	2000
0.2	RILD (Ohm-m)	2000
0.2	RLL3 (Ohm-m)	2000





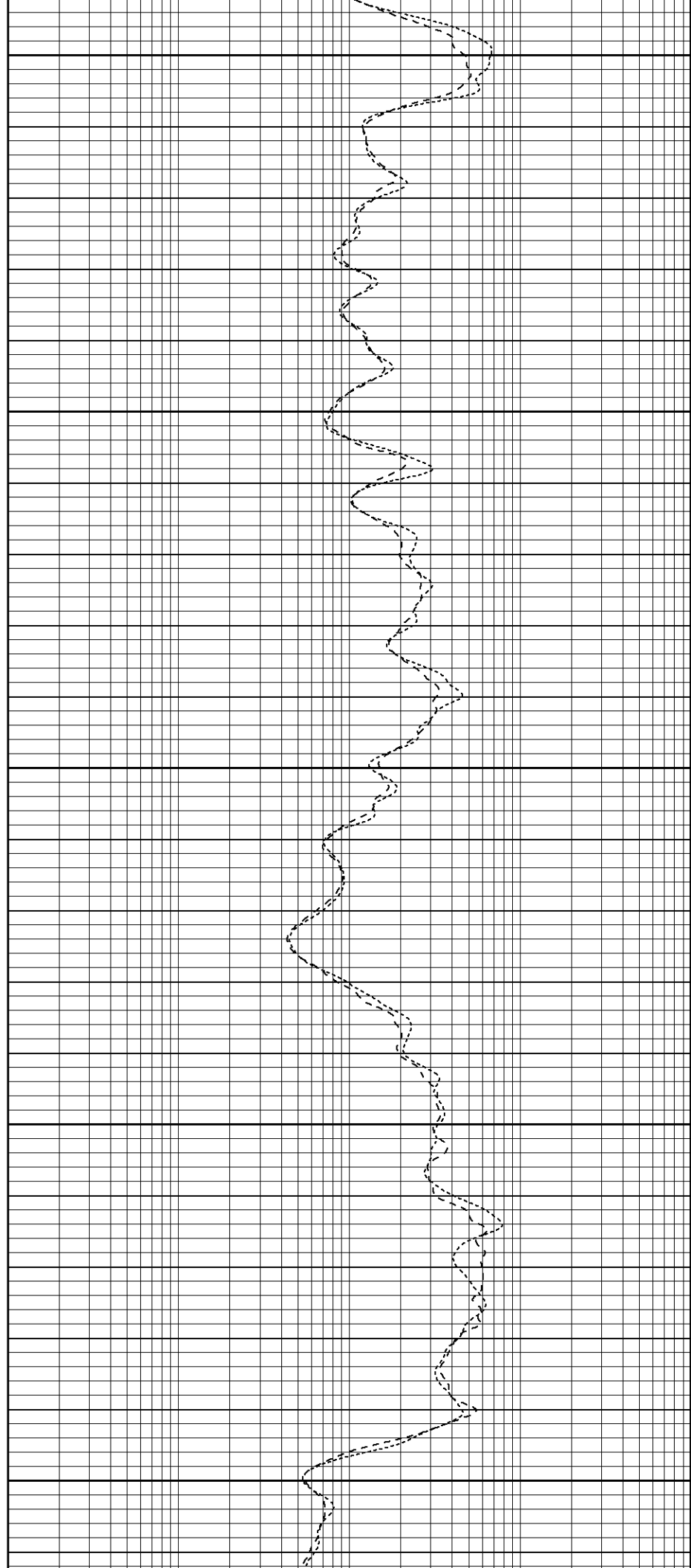
200

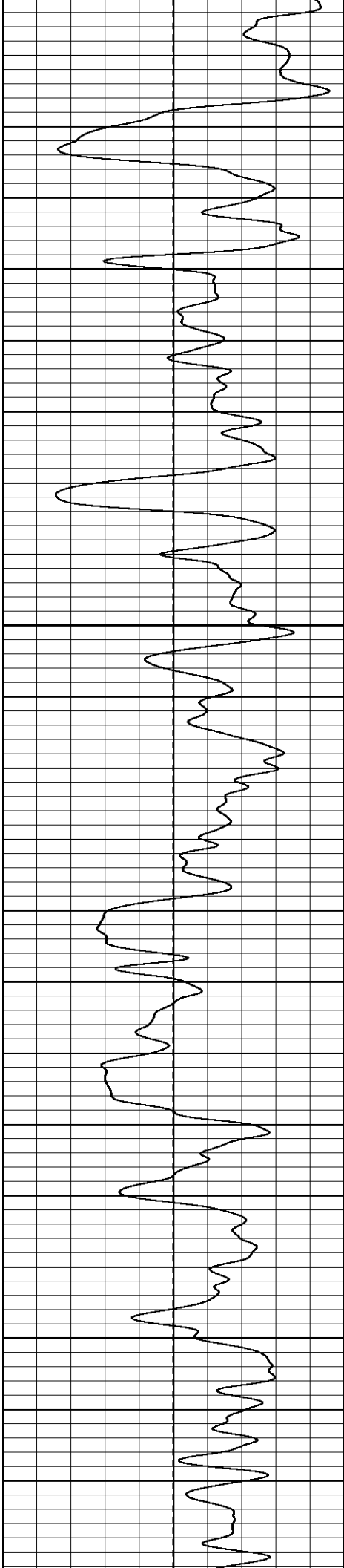
250

300

350

400



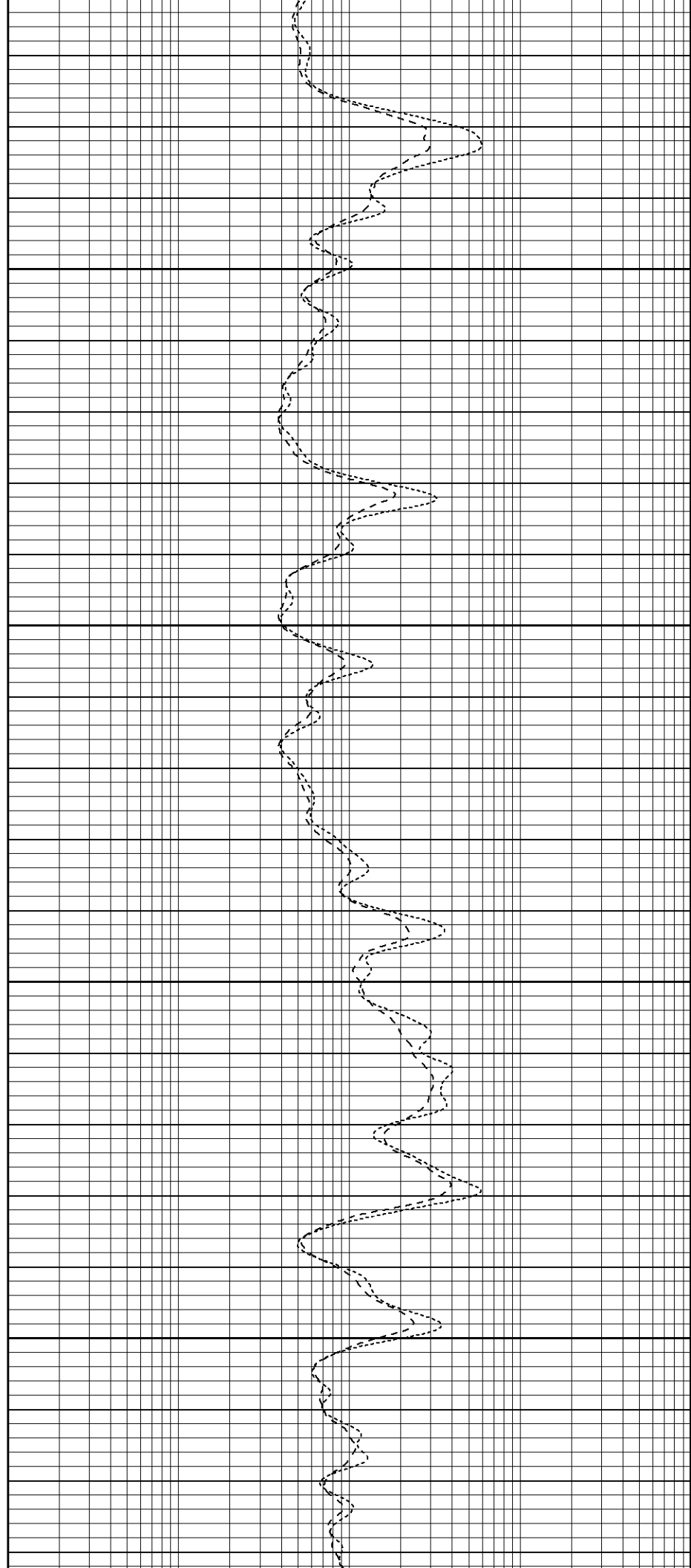


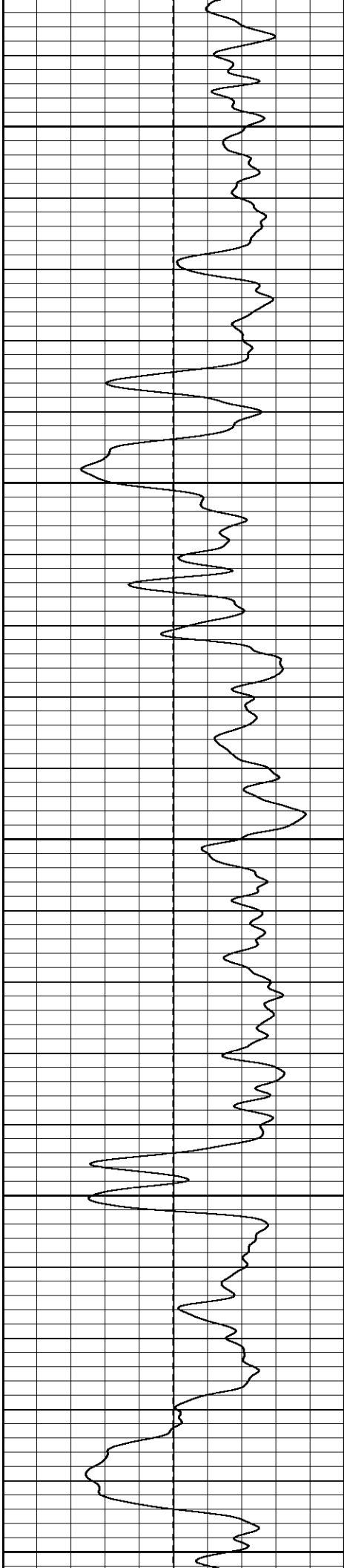
450

500

550

600





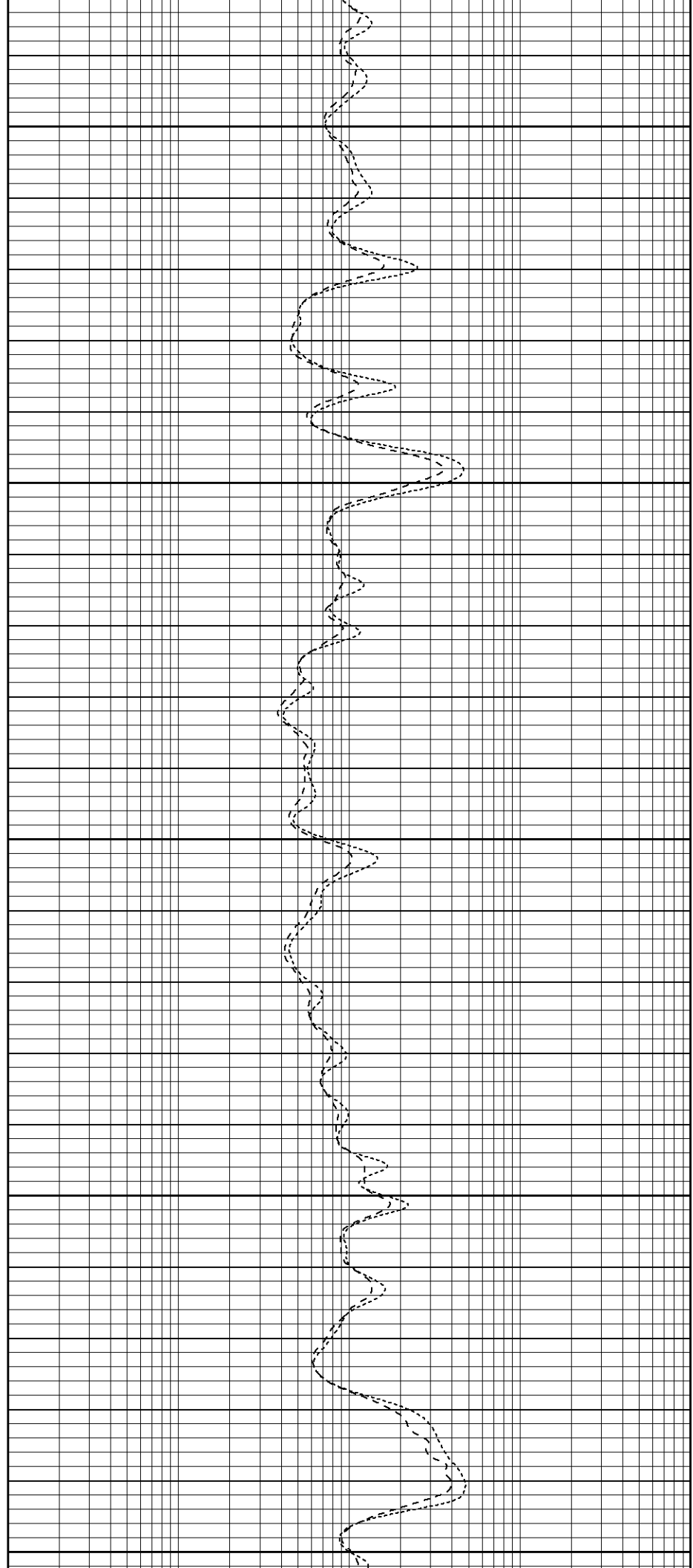
650

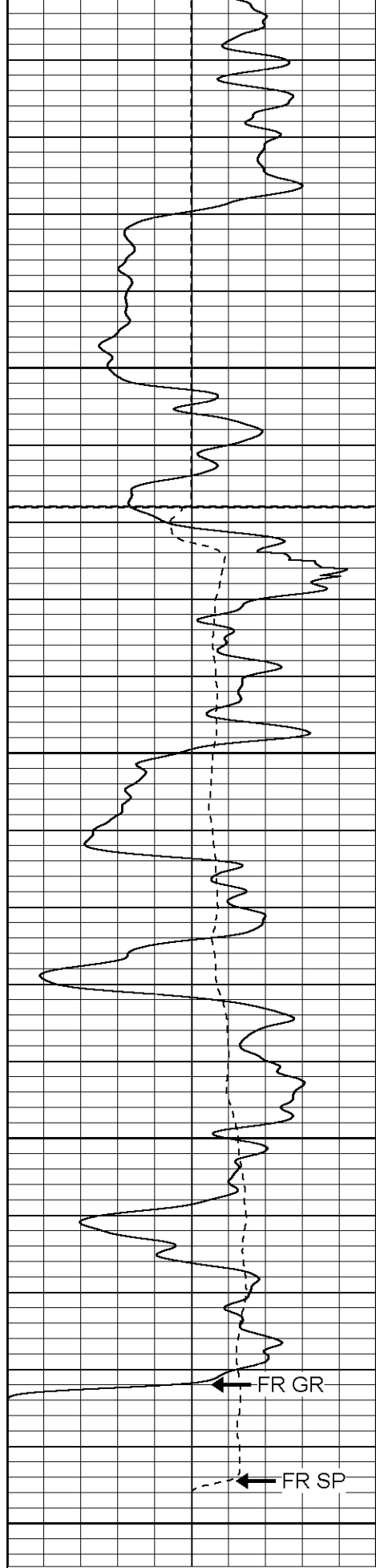
700

750

800

850





900

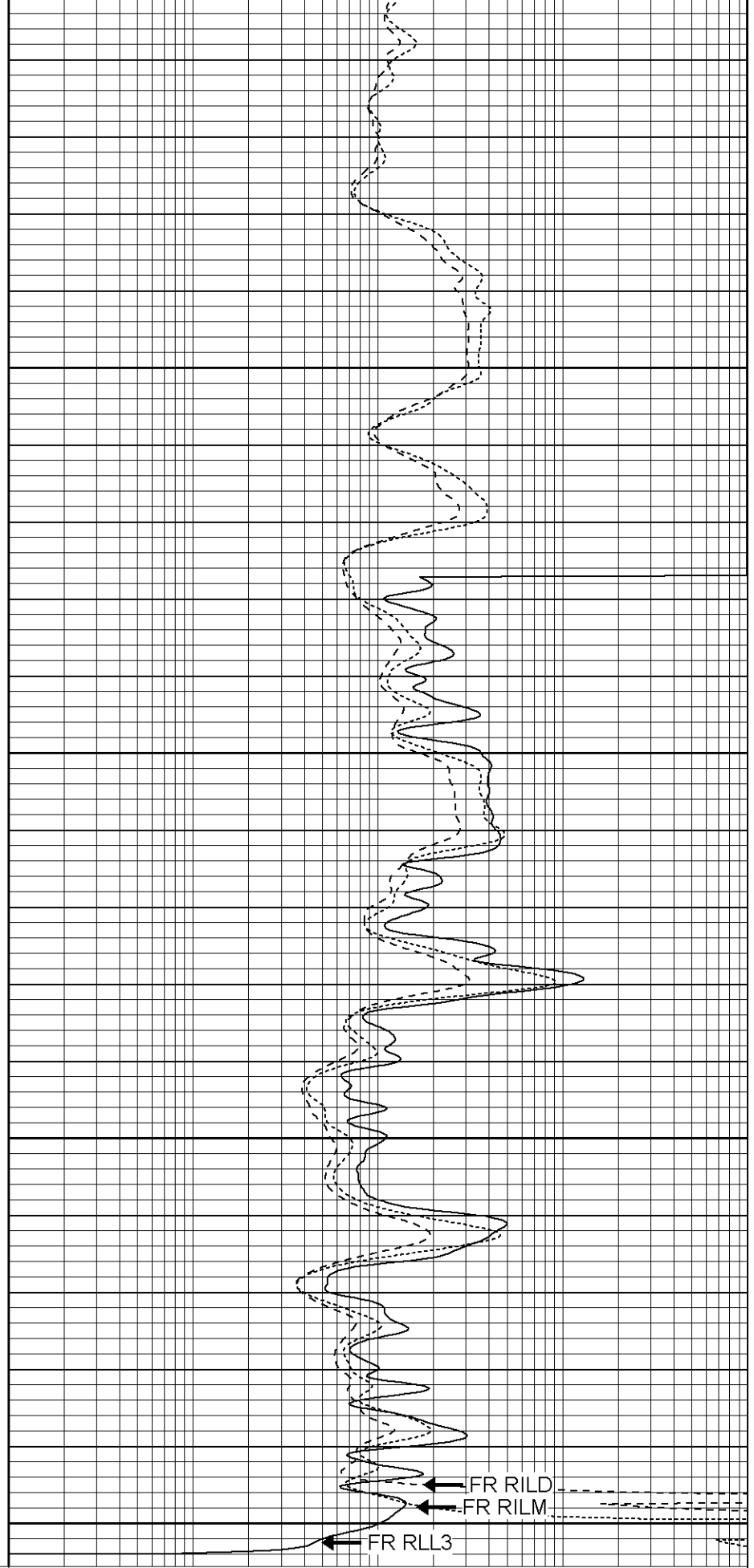
Fluid Level

950

1000

1050

0	GR (GAPI)	200
-100	SP (mV)	100



FR RILD

FR RILM

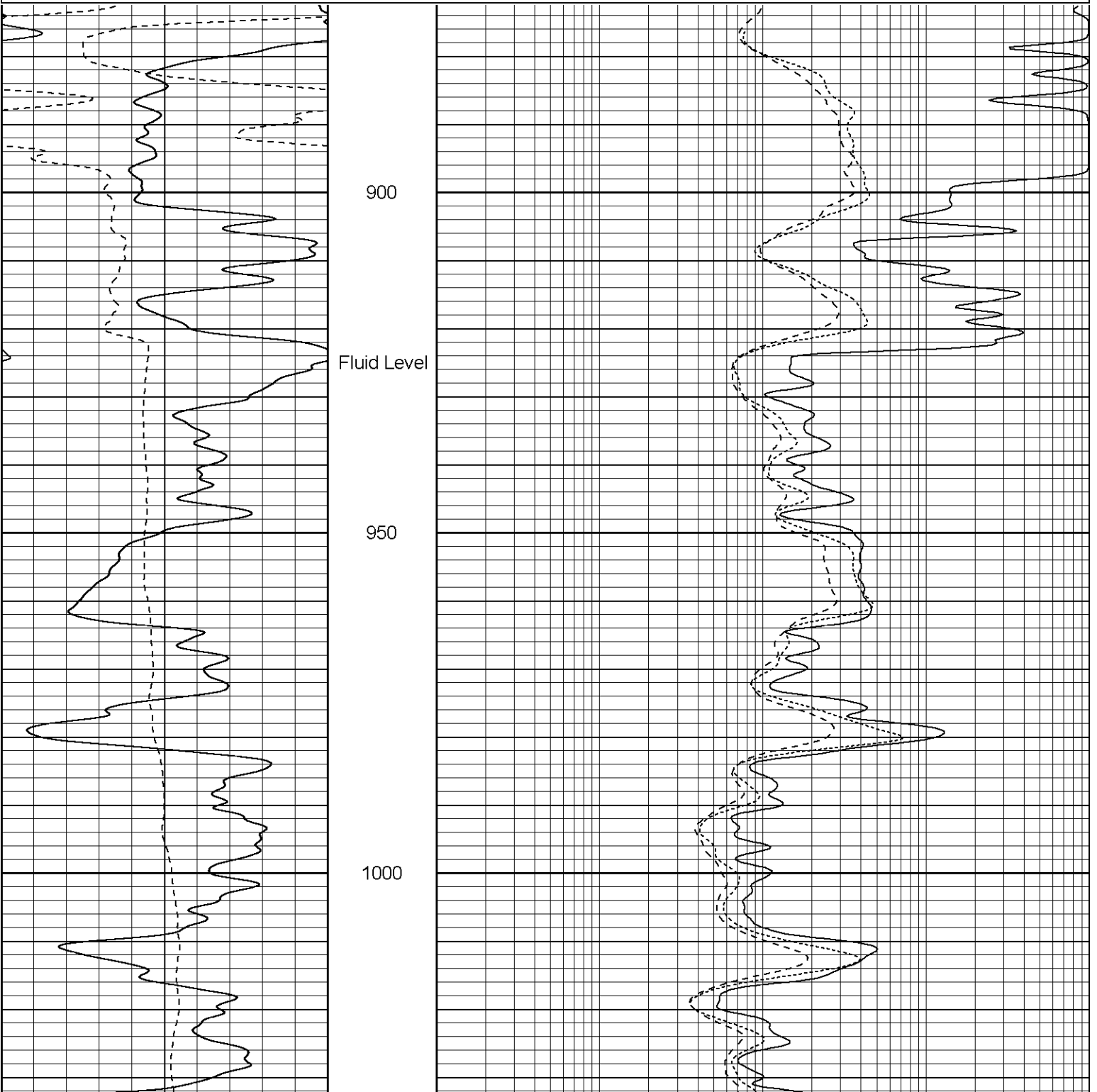
FR RLL3

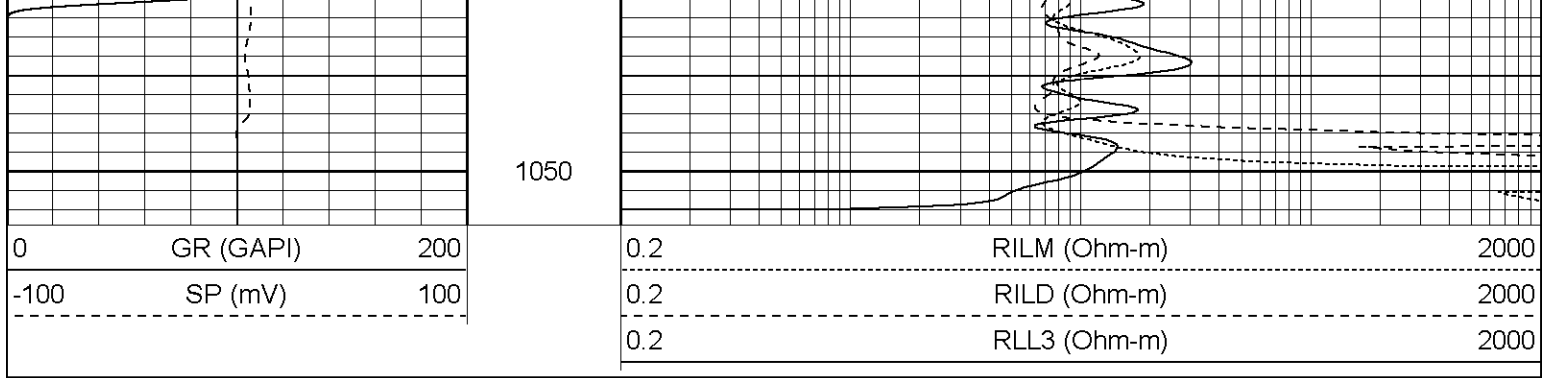
0.2	RILM (Ohm-m)	2000
0.2	RILD (Ohm-m)	2000
0.2	RLL3 (Ohm-m)	2000

Database File: xtoge2004120405.db
Dataset Pathname: pass1.2
Presentation Format: dil
Dataset Creation: Sun Dec 04 14:01:49 2005 by Calc Warrior 7.0 STD Ope
Charted by: Depth in Feet scaled 1:240

0	GR (GAPI)	200
-100	SP (mV)	100

0.2	RILM (Ohm-m)	2000
0.2	RILD (Ohm-m)	2000
0.2	RLL3 (Ohm-m)	2000





Dual Induction Calibration Report

Serial-Model: 5375-G
 Surface Cal Performed: Fri Nov 04 11:47:57 2005
 Downhole Cal Performed: Sun Dec 04 11:51:51 2005
 After Survey Verification Performed: Sun Dec 04 11:51:51 2005

Surface Calibration

Loop:	Readings				References			Results	
	Air	Loop			Air	Loop		m	b
Deep	0.012	0.633	V	0.000	500.000	mmho-m	804.288	-9.342	
Medium	0.016	0.752	V	0.000	550.000	mmho-m	747.433	-11.697	
Internal:	Zero	Cal		Zero	Cal		m	b	
Deep	0.012	0.636	V	0.000	500.000	mmho-m	800.610	-9.578	
Medium	0.016	0.752	V	0.000	550.000	mmho-m	747.389	-12.066	

Downhole Calibration

Internal:	Readings				References			Results	
	Zero	Cal			Zero	Cal		m	b
Deep	1.512	503.799	mmho-m	0.280	502.577	mmho-m	1.000	-1.232	
Medium	0.922	551.464	mmho-m	0.370	550.401	mmho-m	0.999	-0.551	
Shallow	2.522	0.024	V	500.000	2.000	Ohm-m	199.331	-2.730	

After Survey Verification

Internal:	Readings				Targets			Results	
	Zero	Cal			Zero	Cal		m'	b'
Deep	0.000	0.000	mmho-m	1.512	503.799	mmho-m	1.000	-1.232	
Medium	0.000	0.000	mmho-m	0.922	551.464	mmho-m	0.999	-0.551	
Shallow	0.000	0.000	Ohm-m	500.000	2.000	Ohm-m	1.000	0.000	

Gamma Ray Calibration Report

Serial Number: 2001
 Tool Model: OH
 Performed: Fri Dec 02 18:00:15 2005
 Calibrator Value: 1.0 GAPI
 Background Reading: 0.0 cps
 Calibrator Reading: 1.0 cps
 Sensitivity: 0.2800 GAPI/cps

Sensor	Offset (ft)	Schematic	Description	Len (ft)	OD (in)	Wt (lb)
CHD	25.08		None	0.75	1.50	5.00
GR	22.83		GR-OH (2001) SIE	3.50	3.25	40.00
CILD SP	10.60 10.60		DIL-G (5375) Gearhart	20.83	4.00	345.00
CILM	6.89					
RLL3	1.70					

Dataset: /field/well/run1/_plots/_jobs_/dil
 Total Length: 25.08 ft
 Total Weight: 390.00 lb
 O.D. 4.00 in