

Patterson

**CEMENT
BOND
LOG**

Company Pioneer Natural Resources
Well Zen 42-14
Field Purgatoire River
County Las Animas State Colorado

Location: API # : 05 071 08246 00
2010' FNL & 754' FEL
Other Services
SEC 14 TWP 32S RGE 68W
Permanent Datum Ground Level Elevation 8388'
Log Measured From Kelly Bushing 4' Above G.L.
Drilling Measured From Kelly Bushing
Elevation
K.B. 8392'
D.F. -----
G.L. 8388'

Company Pioneer Natural Resources
Well Zen 42-14
Field Purgatoire River
County Las Animas
State Colorado

Date 03-07-05

Run Number	One
Depth Driller	3390'
Depth Logger	935'
Bottom Logged Interval	932'
Top Log Interval	Surface
Open Hole Size	7 7/8"
Type Fluid	Water
Density / Viscosity	///
Max. Recorded Temp.	///
Estimated Cement Top	Surface
Time Well Ready	2:15 P.M.
Time Logger on Bottom	2:30 P.M.
Equipment Number	T677
Location	Trinidad
Recorded By	L. Smith
Witnessed By	Mr. Billy Woodridge

Borehole Record				Tubing Record			
Run Number	Bit	From	To	Size	Weight	From	To

Casing Record	Size	Wgt/Ft	Top	Bottom
Surface String				
Prot. String				
Production String				
Liner				

>>> Fold Here >>>

All interpretations are opinions based on inferences from electrical or other measurements and we cannot and do not guarantee the accuracy or correctness of any interpretation, and we shall not, except in the case of gross or willful negligence on our part, be liable or responsible for any loss, costs, damages, or expenses incurred or sustained by anyone resulting from any interpretation made by any of our officers, agents or employees. These interpretations are also subject to our general terms and conditions set out in our current Price Schedule.

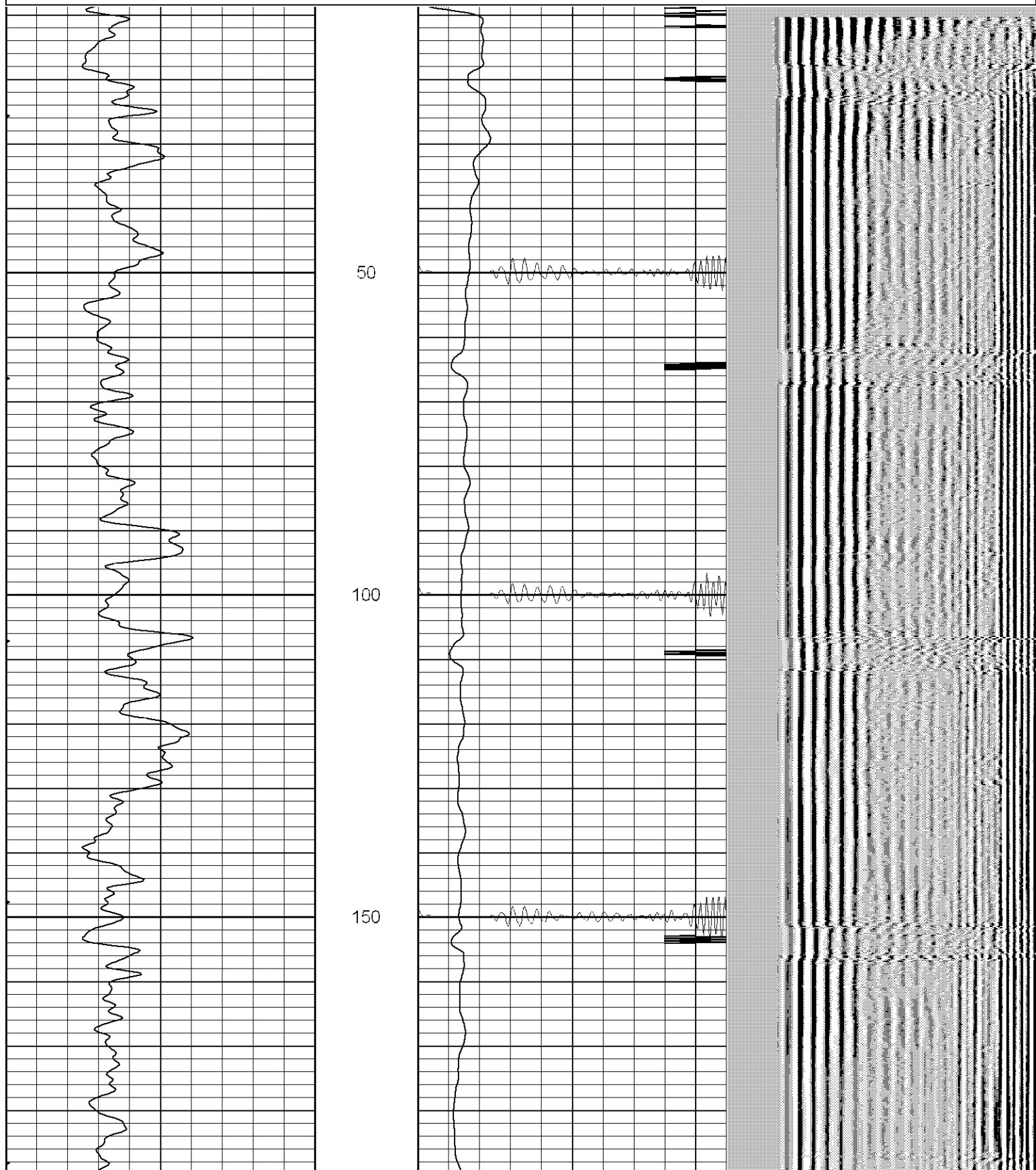
Comments

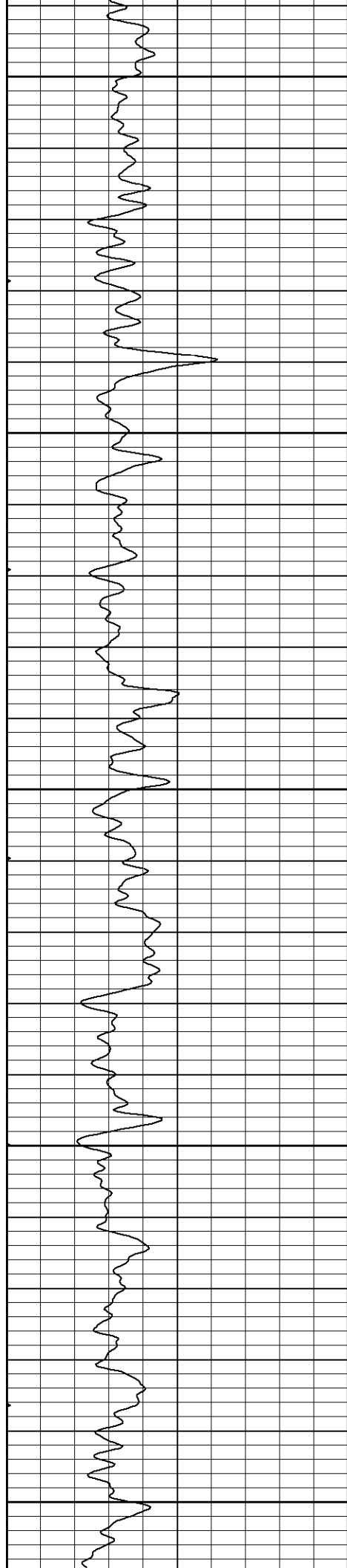
Patterson

Main Pass

Database File: zen030705b.db
Dataset Pathname: pass2
Presentation Format: cblrt
Dataset Creation: Mon Mar 07 14:25:16 2005
Charted by: Depth in Feet scaled 1:240

0	GR (GAPI)	200	0	AMP3 (mV)	100	200	Variable Density	1200
0	MINMK	80	18	CCL	-2			
400	TT3 (usec)	200	100	CBL5	1200			





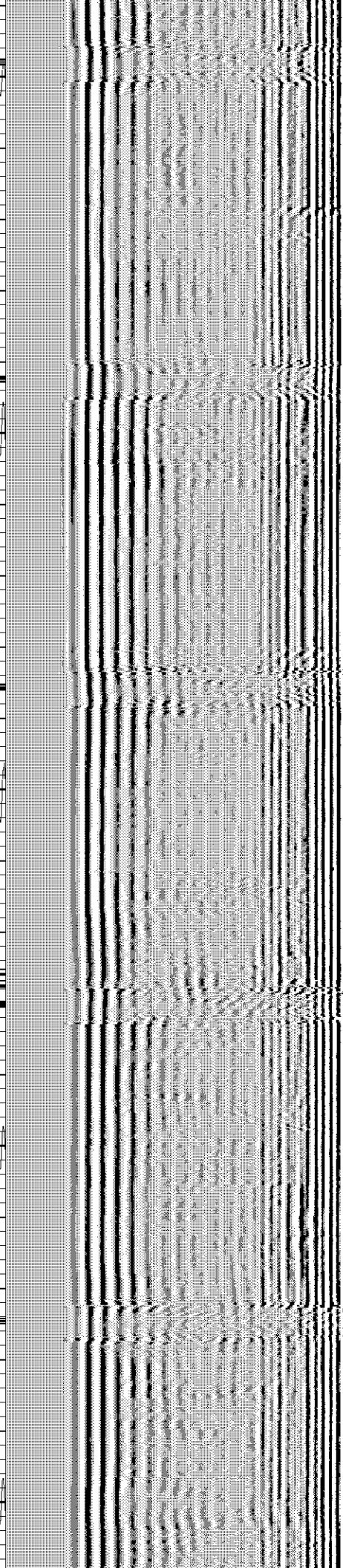
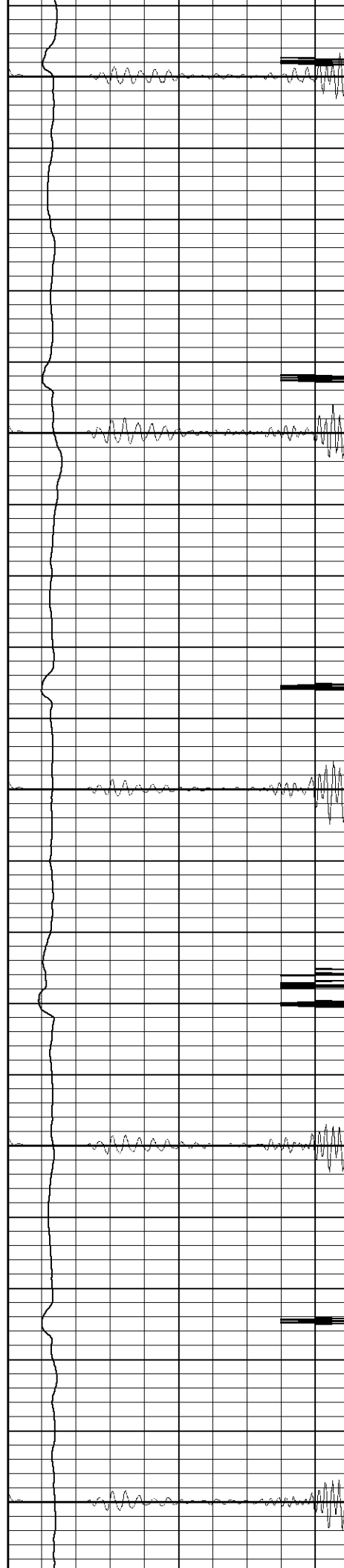
200

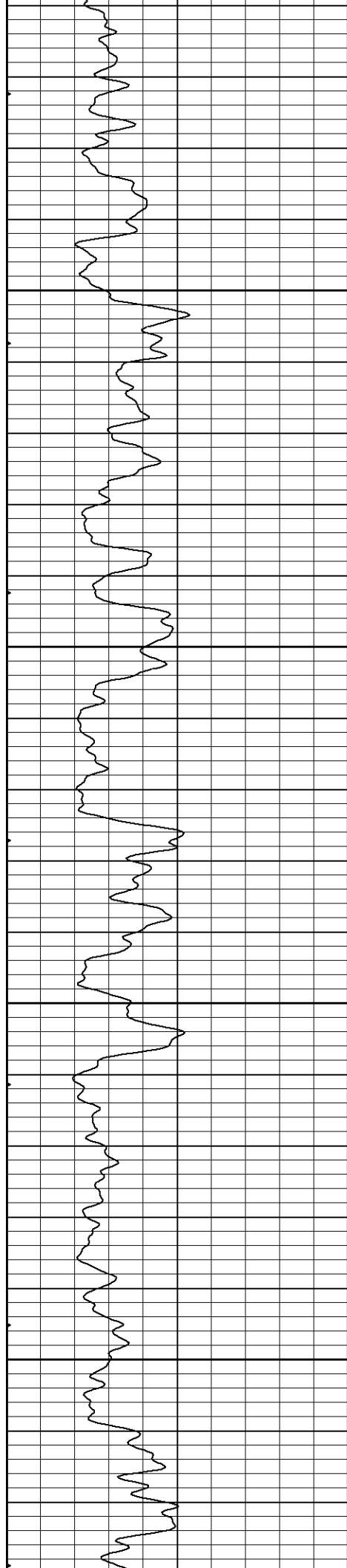
250

300

350

400



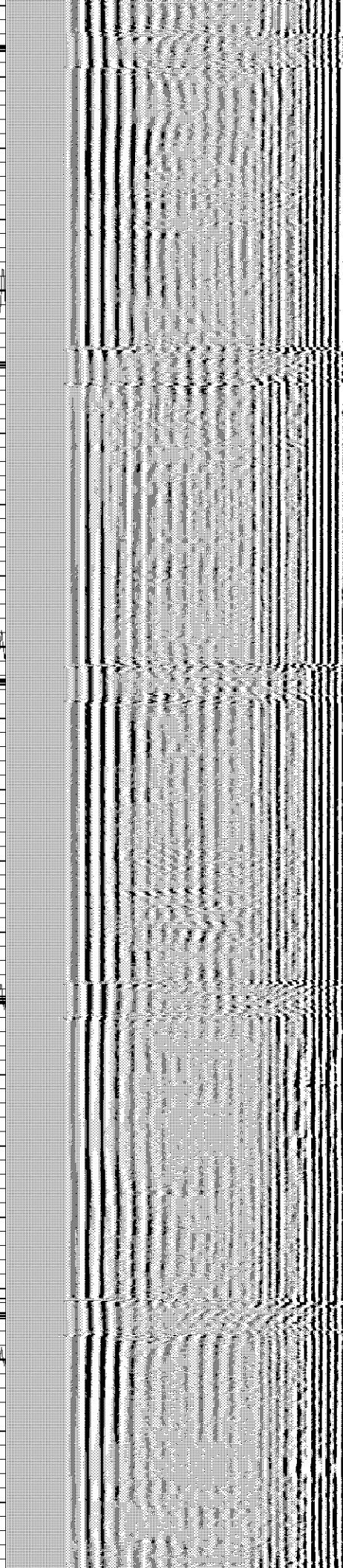
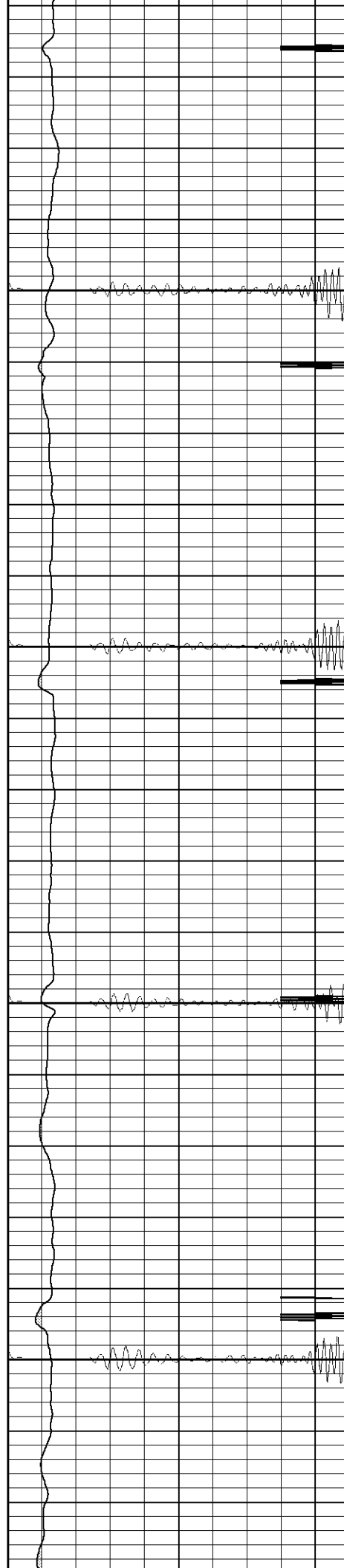


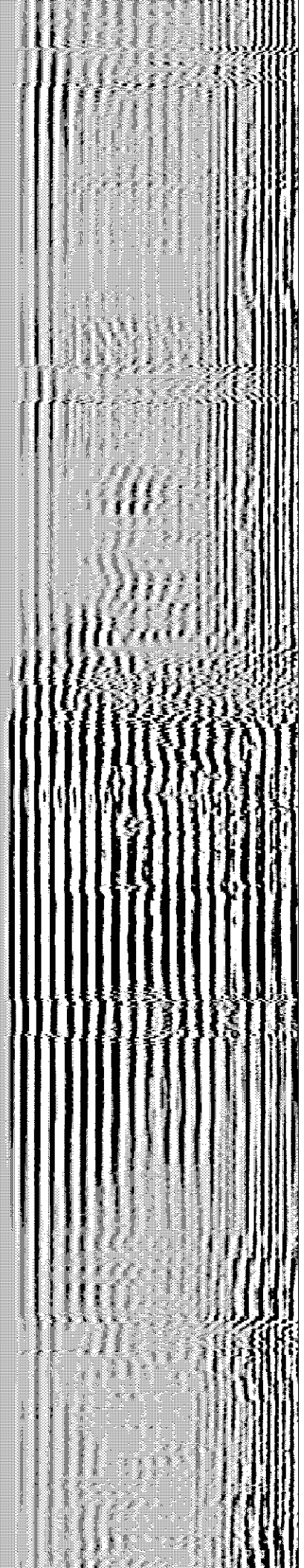
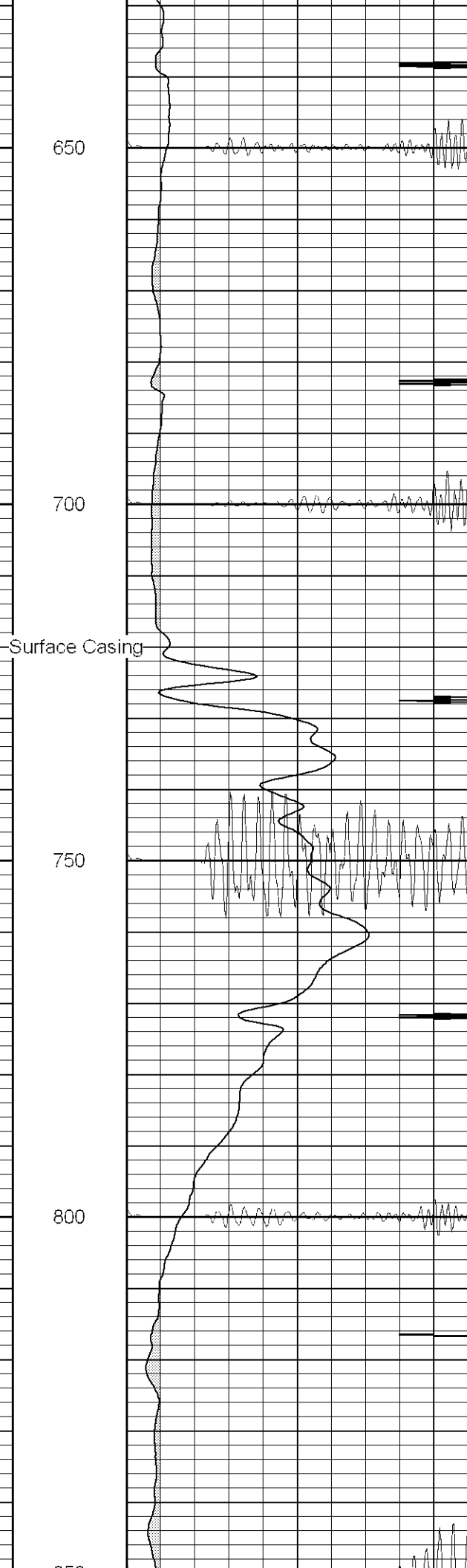
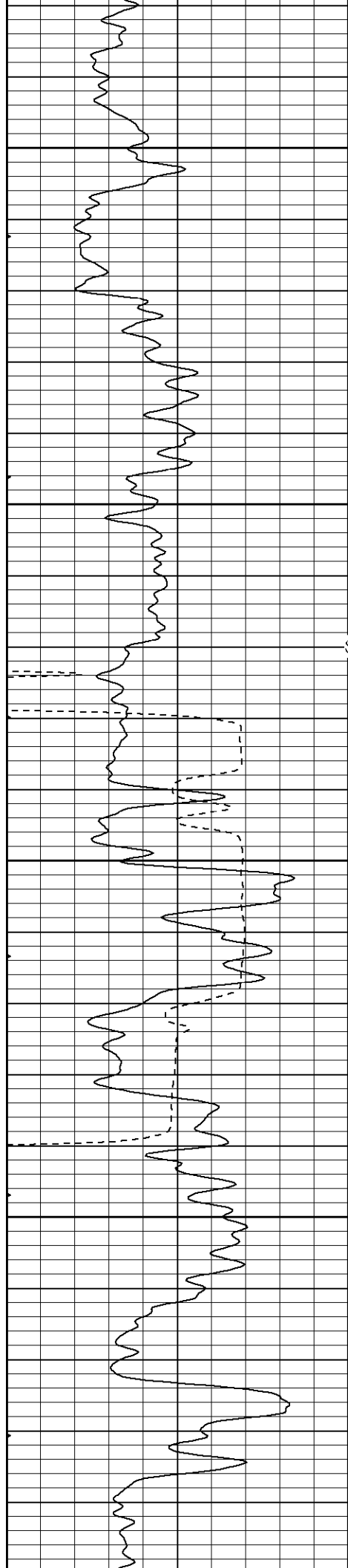
450

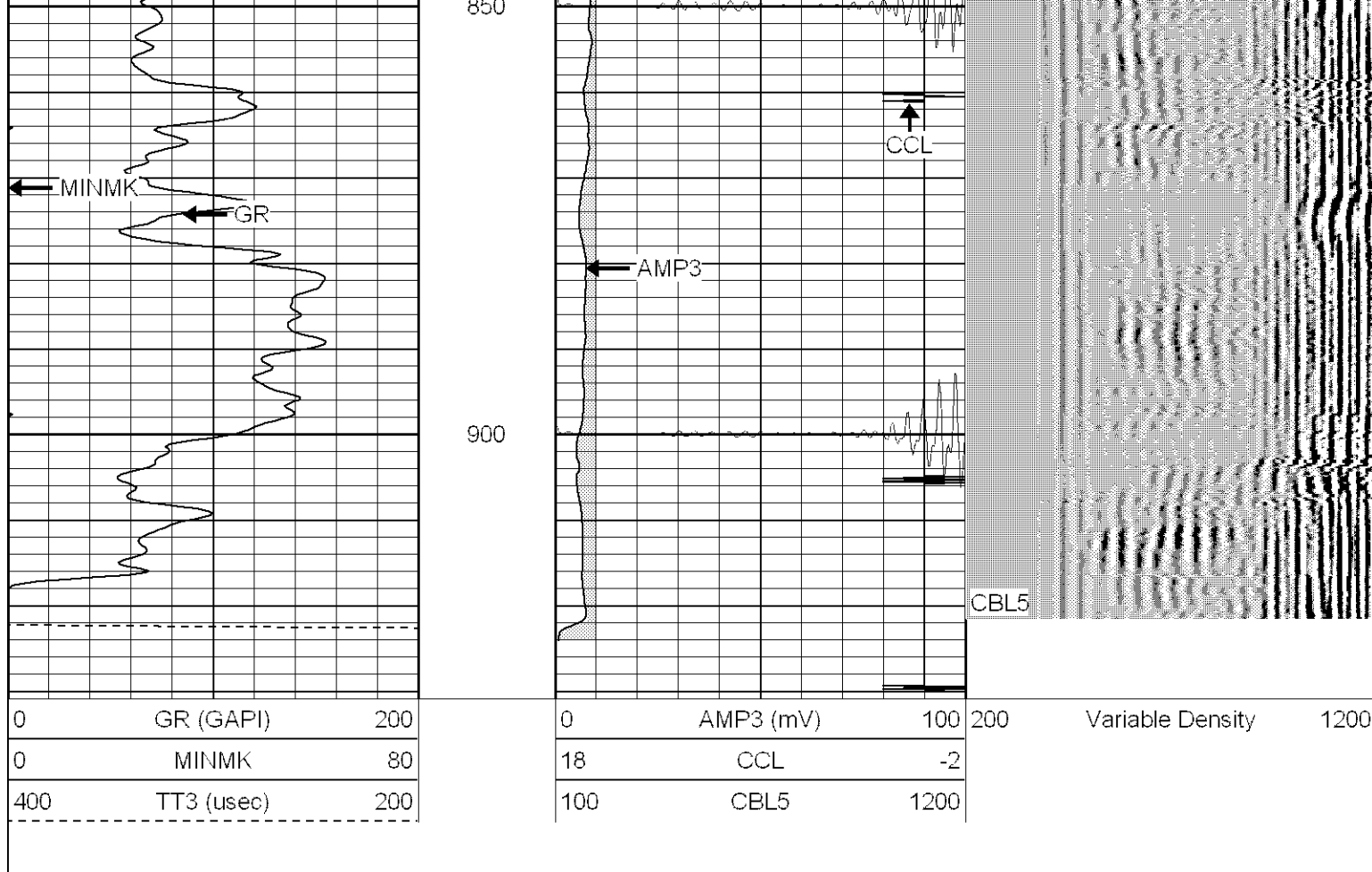
500

550

600





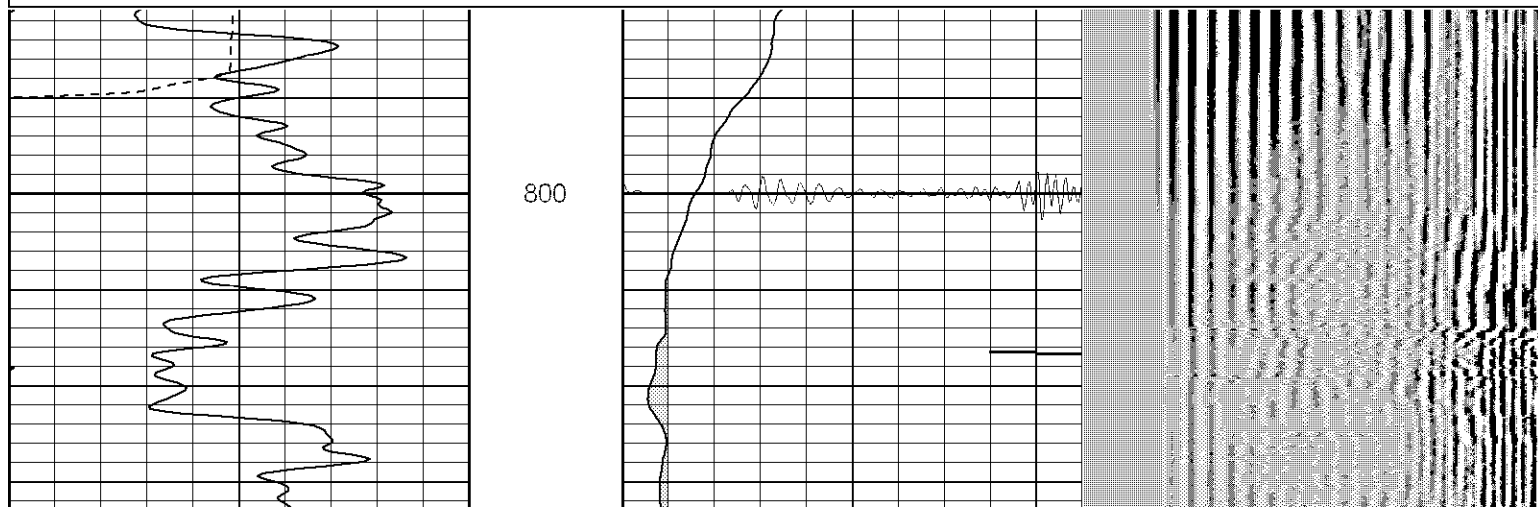


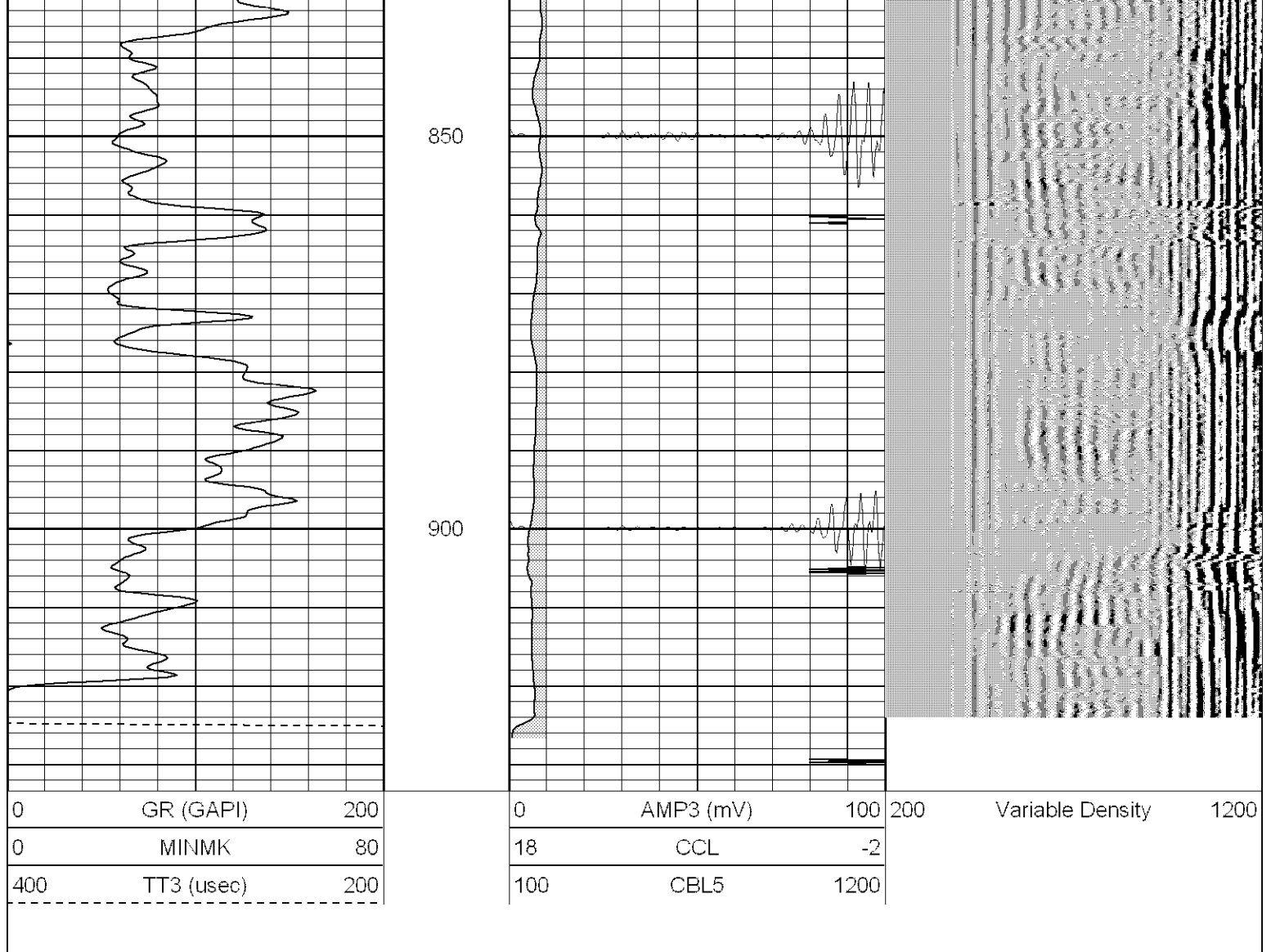
Patterson

Repeat Pass

Database File: zen030705b.db
 Dataset Pathname: pass1
 Presentation Format: cblrt
 Dataset Creation: Mon Mar 07 14:21:30 2005
 Charted by: Depth in Feet scaled 1:240

0	GR (GAPI)	200	0	AMP3 (mV)	100	200	Variable Density	1200
0	MINMK	80	18	CCL	-2			
400	TT3 (usec)	200	100	CBL5	1200			





Cement Bond Log Calibration Report

Serial Number:	Titan5		
Tool Model:	T5		
Performed:	Wed Feb 09 09:31:46 2005		
Depth:	0	ft	
Casing Diameter:	0	in	
	3' Spacing	5' Spacing	
Signal Zero:	1	0	mV
Calibrated Amplitude:	85	85	mV
Reading at Signal Zero:	0	0	V
Reading in Free Pipe:	1.51	1.65	V
Gain:	55.6291	51.5152	
Offset:	1	0	

Gamma Ray Calibration Report

Serial Number:	Titan5	
Tool Model:	T2	
Performed:	Fri Feb 04 12:29:33 2005	
Calibrator Value:	1.0	GAPI
Background Reading:	0.0	cps
Calibrator Reading:	1.0	cps

CPS

GAPI/cps

Sensor	Offset (ft)	Schematic	Description	Len (ft)	OD (in)	Wt (lb)
CHD	15.66		None	0.75	1.50	5.00
GR	13.64		GR-T2 (Titan5)	2.52	2.44	25.00
WVF5	9.49		CBL-T5 (Titan5)	7.23	2.44	110.00
WVF3	8.49					
CENT	5.15		X	3.00	1.69	25.00
CCL	0.83		CCL-T5 (Titan5)	2.15	2.75	15.00
Dataset: /field/well/run1/_plots/_/jobs_/b Total Length: 15.66 ft Total Weight: 180.00 lb O.D. 2.75 in						