

Patterson

**CEMENT BOND
LOG**

Company XTO Energy, Inc.
Well Apache Canyon 18-07
Field Purgatorie River
County Las Animas State Colorado

Location:	API # : 05-071-08887-00	Other Services
	1499' FNL & 1734' FEL	
SEC 18 TWP 34S RGE 67W		
Permanent Datum	Ground Level	Elevation 7684'
Log Measured From	Ground Level	
Drilling Measured From	Ground Level	
		Elevation K.B. ----- D.F. ----- G.L. 7684'

Company XTO Energy, Inc.
Well Apache Canyon 18-07
Field Purgatorie River
County Las Animas
State Colorado

Date 9-27-06

Run Number	One	
Depth Driller	2137'	
Depth Logger	2135'	
Bottom Logged Interval	2133'	
Top Log Interval	Surface	
Open Hole Size	7 7/8"	
Type Fluid	Water	
Density / Viscosity	////	
Max. Recorded Temp.	125 DEG F	
Estimated Cement Top	1276'	
Time Well Ready	9:30 A.M.	
Time Logger on Bottom	9:50 A.M.	
Equipment Number	T096	
Location	Trinidad	
Recorded By	S. Allen	
Witnessed By	Mr. Ryan Rensink	

Borehole Record			Tubing Record				
Run Number	Bit	From	To	Size	Weight	From	To

Casing Record	Size	Wgt/Ft	Top	Bottom
Surface String	8 5/8"		00	362'
Prot. String				
Production String	5 1/2"		00	N/A
Liner				

>>> Fold Here >>>

All interpretations are opinions based on inferences from electrical or other measurements and we cannot and do not guarantee the accuracy or correctness of any interpretation, and we shall not, except in the case of gross or willful negligence on our part, be liable or responsible for any loss, costs, damages, or expenses incurred or sustained by anyone resulting from any interpretation made by any of our officers, agents or employees. These interpretations are also subject to our general terms and conditions set out in our current Price Schedule.

Comments

Well Directions:
Hwy 12-Turn Left at Bosque Entrance Just Before Weston-Drive to Big Bingham Canyon-
Turn Right-Follow Road 1.7 Miles-Turn Right-Drive to Location.

Patterson

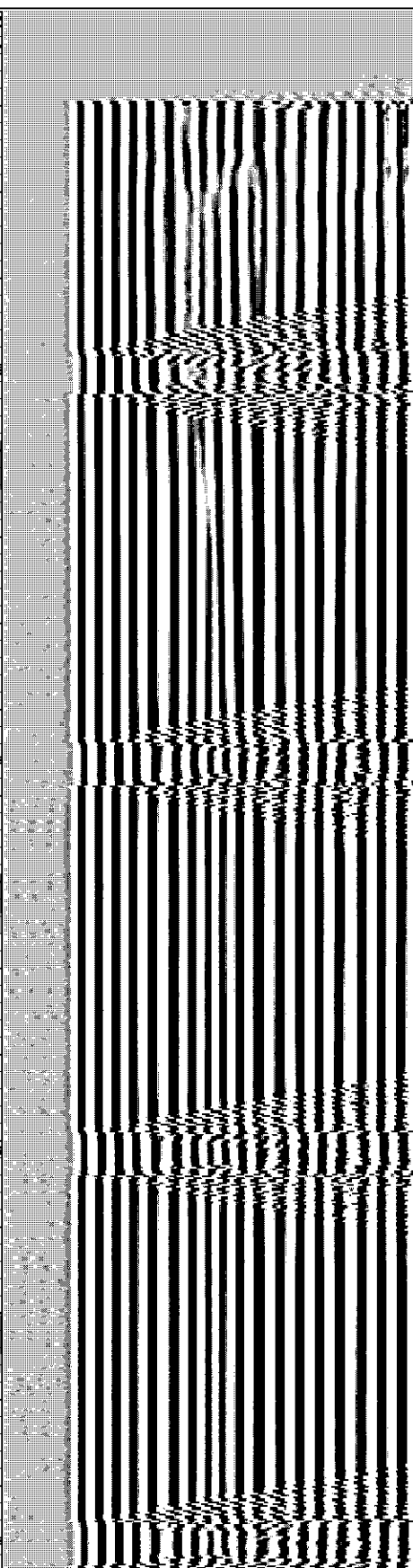
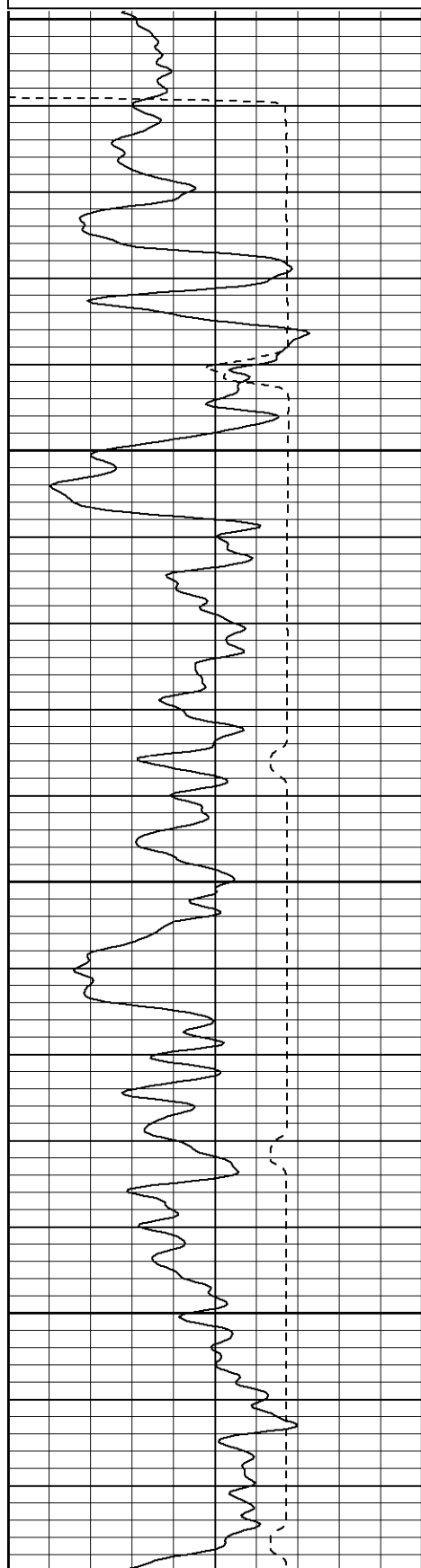
Main Pass

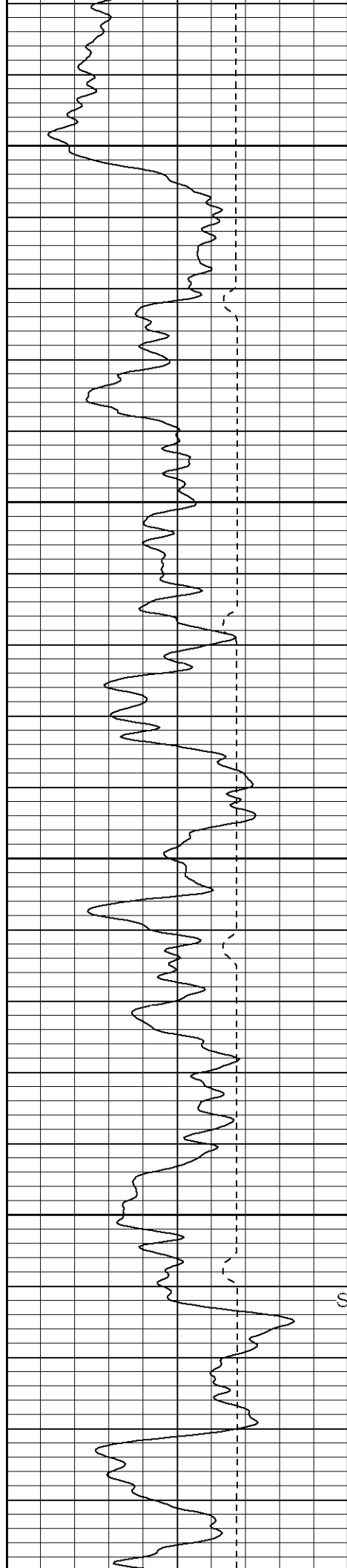
Database File: ac1807-092706b.db
Dataset Pathname: pass3
Presentation Format: cblrt
Dataset Creation: Wed Sep 27 10:35:41 2006 by Log Warrior 7.0 STD Ope
Charted by: Depth in Feet scaled 1:240

0	GR (GAPI)	200
400	TT3 (usec)	200
<hr/>		
200	GR (GAPI)	400

0	Amplitude (mV)	100
18	CCL	-2
<hr/>		
200	CBL5	1200

200 VDL 1200





200

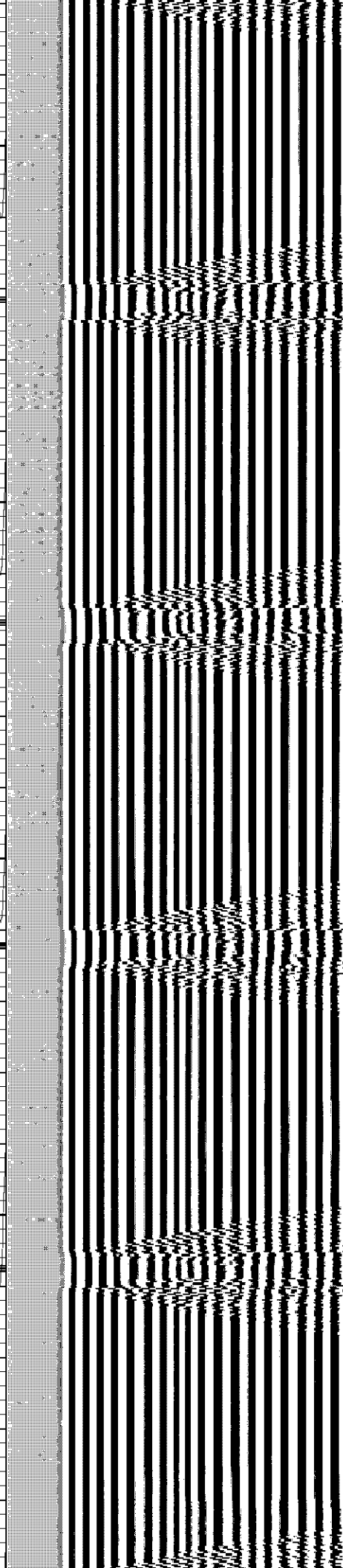
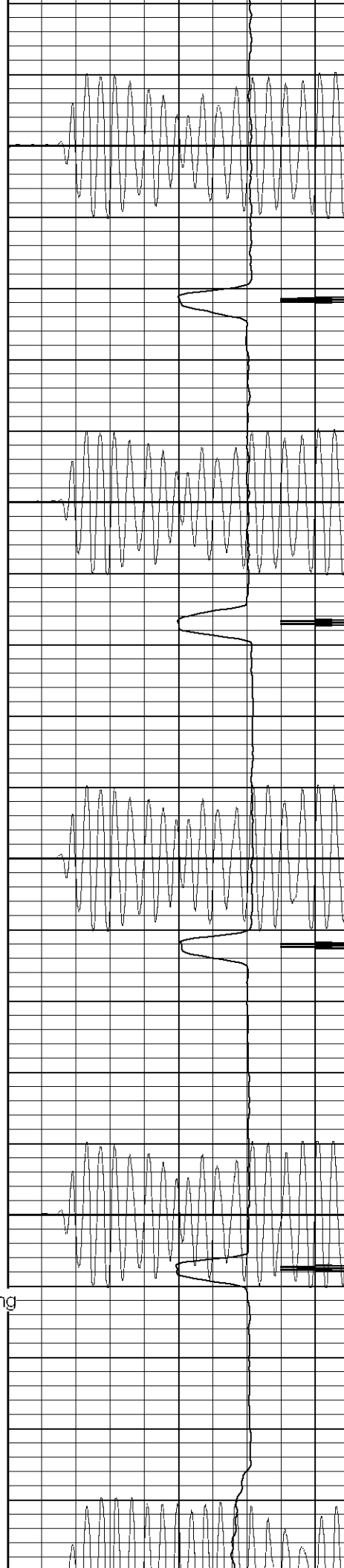
250

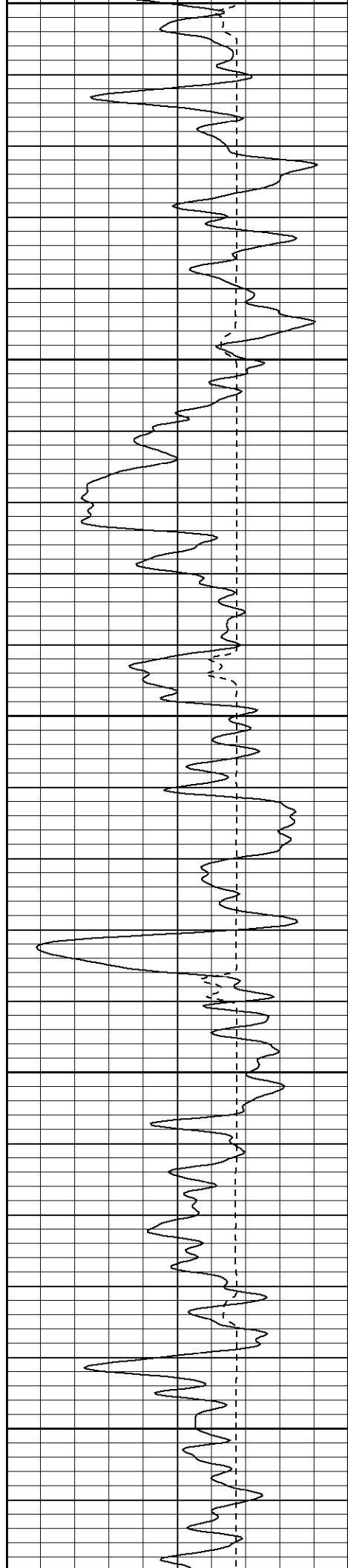
300

350

Surface Casing

400





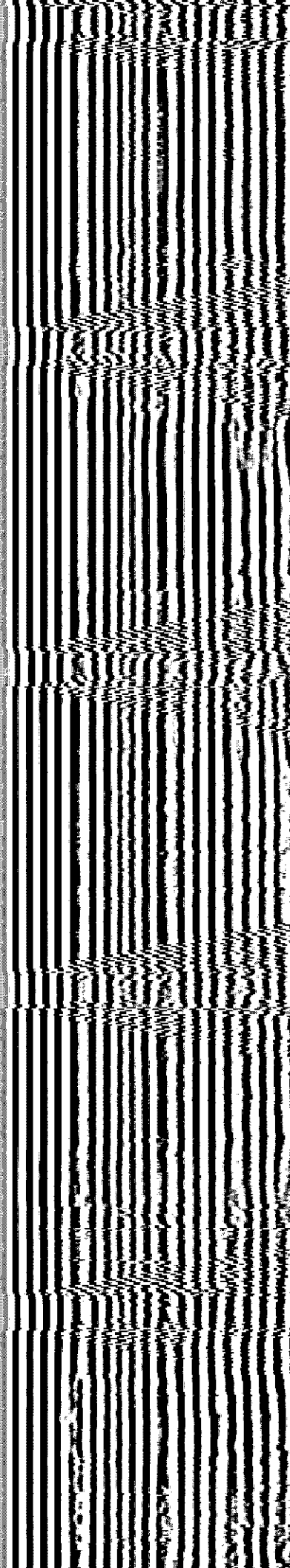
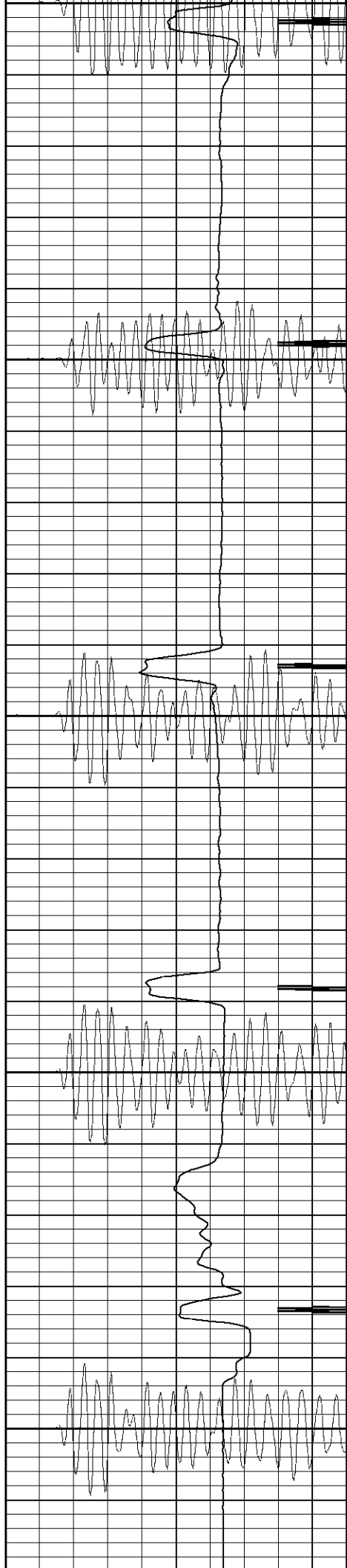
400

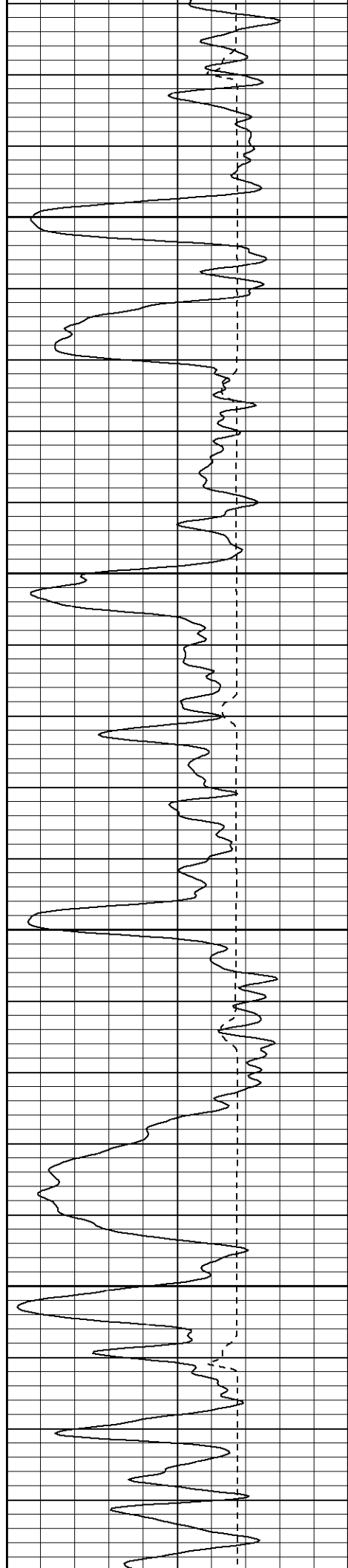
450

500

550

600



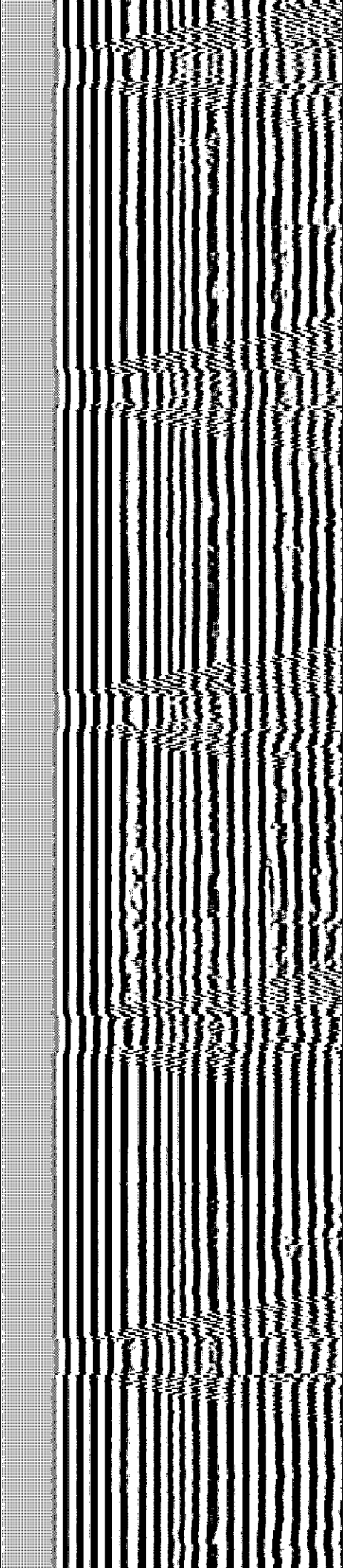
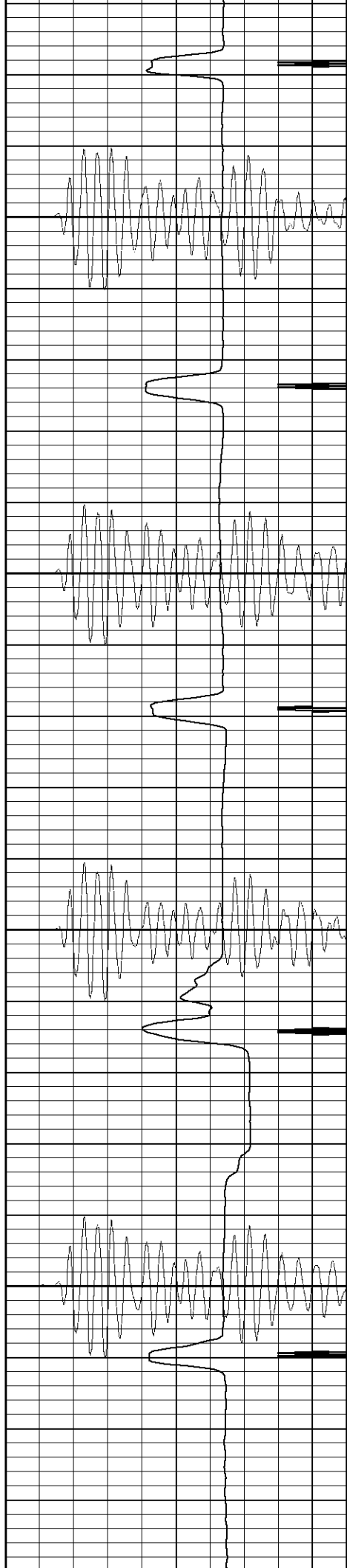


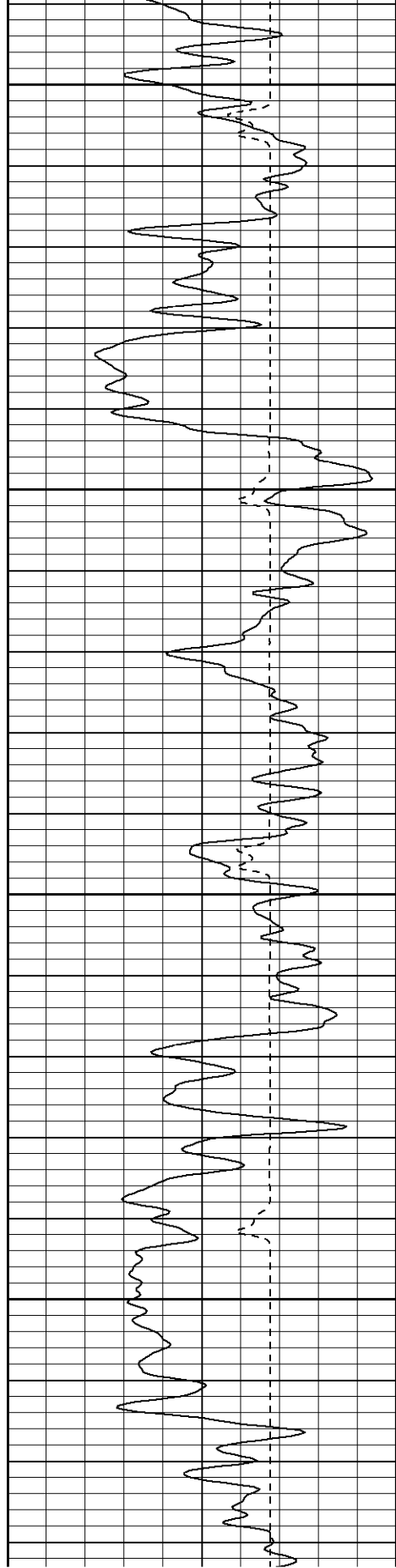
650

700

750

800



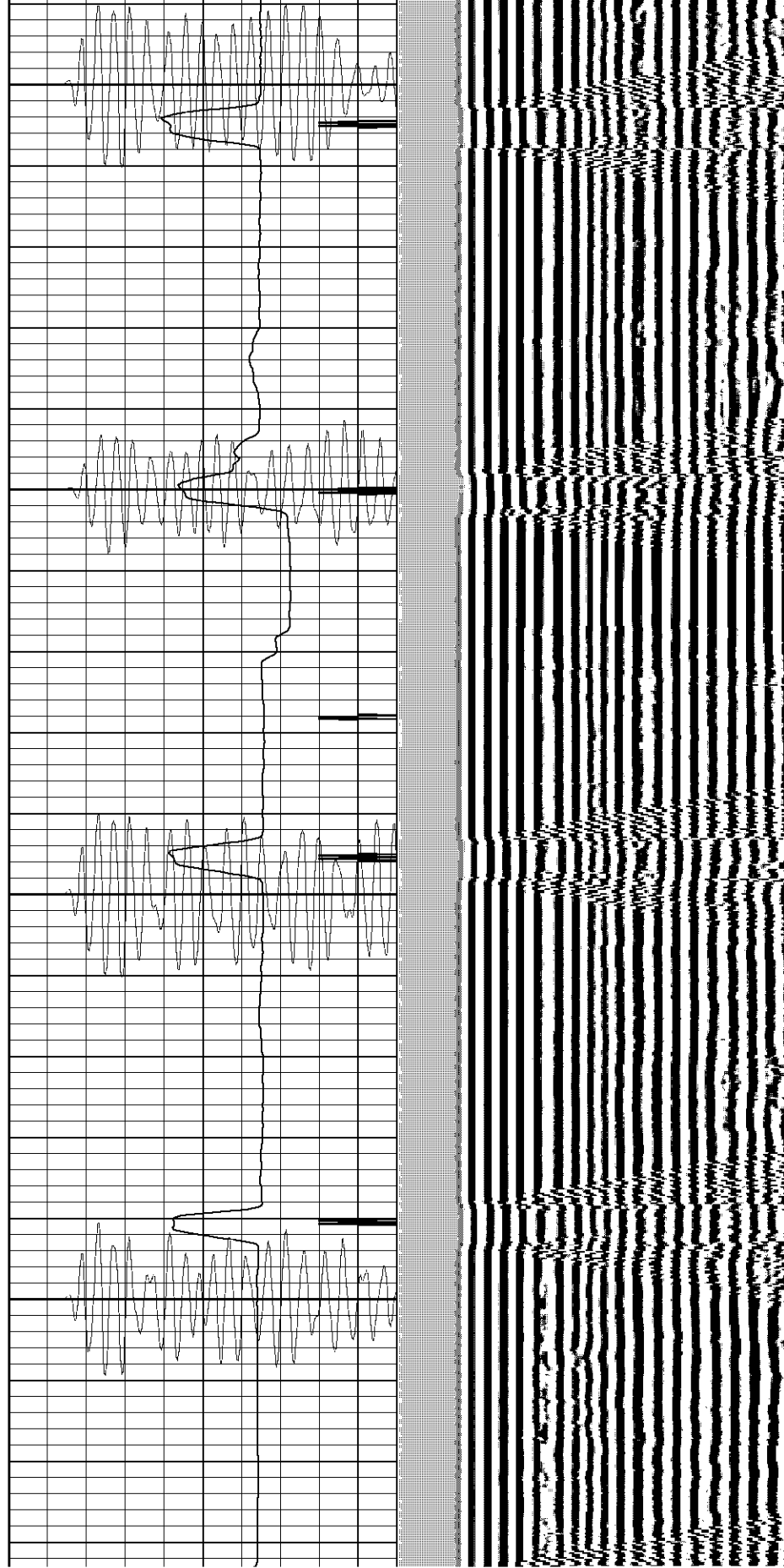


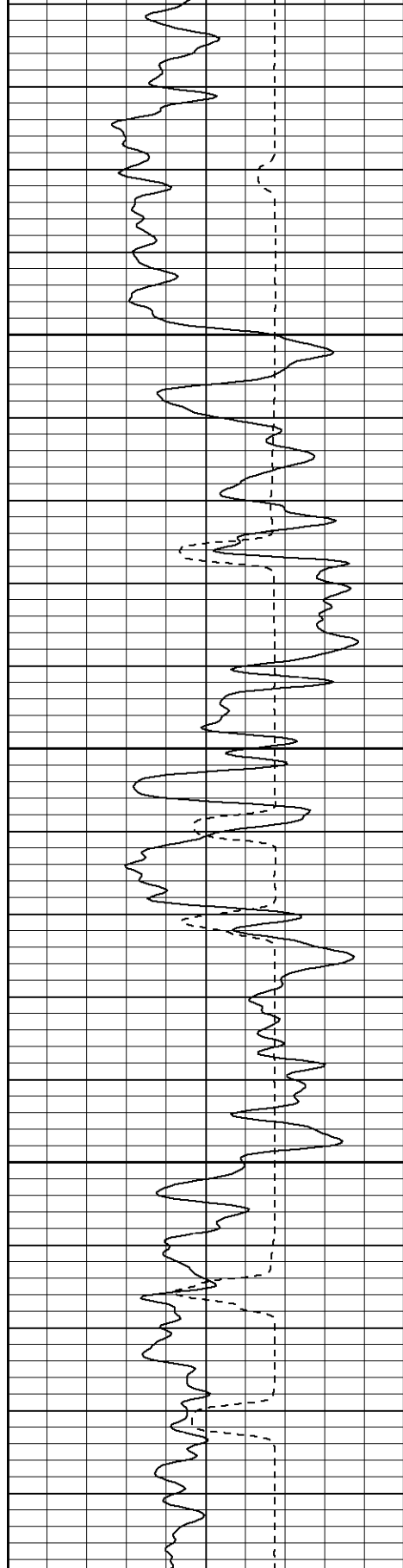
850

900

950

1000

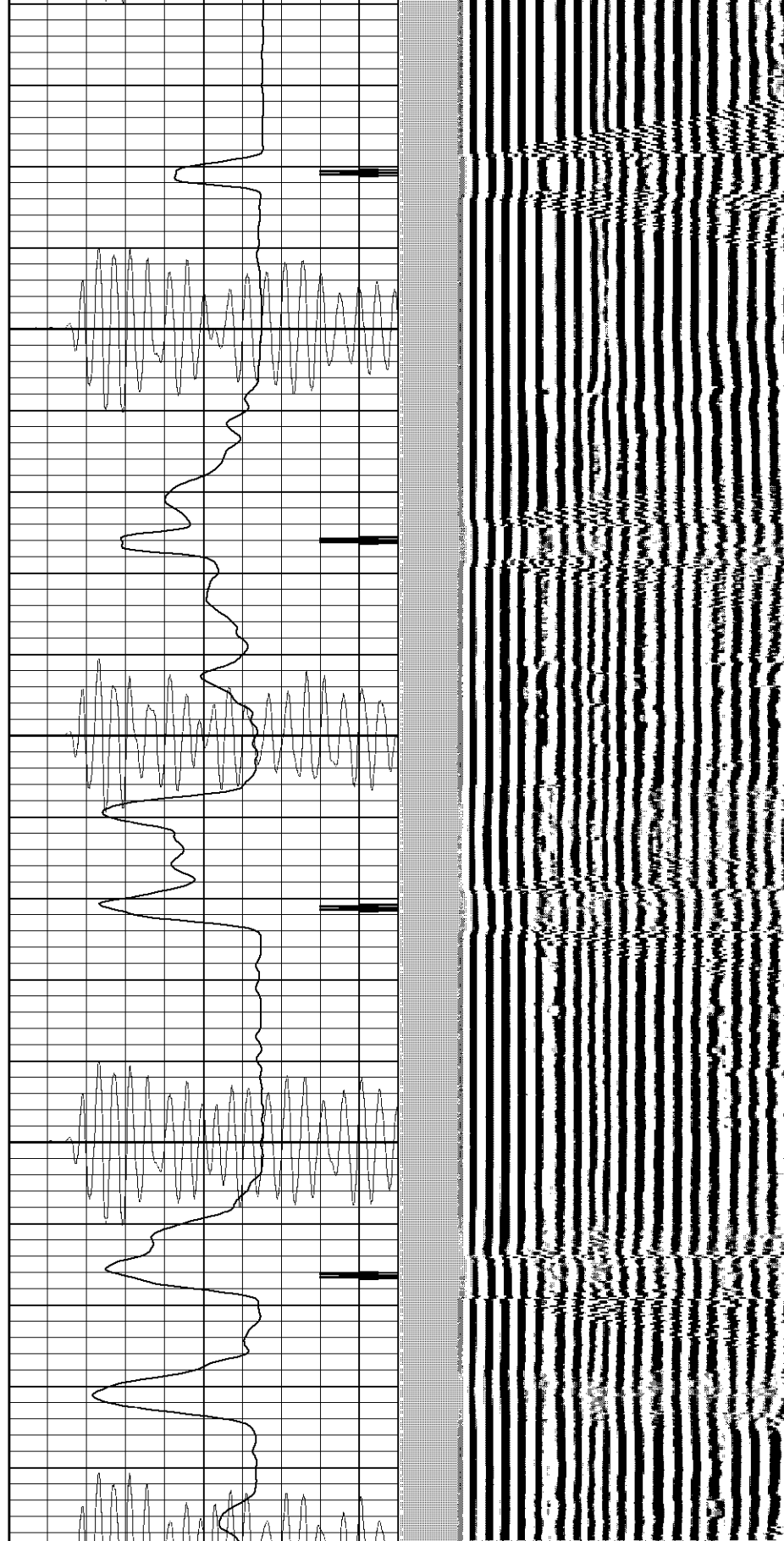


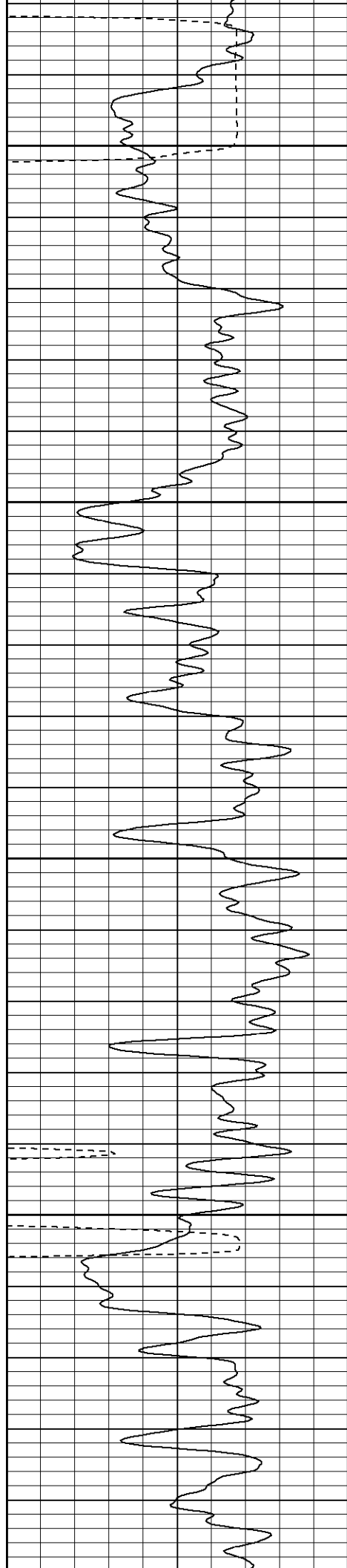


1100

1150

1200





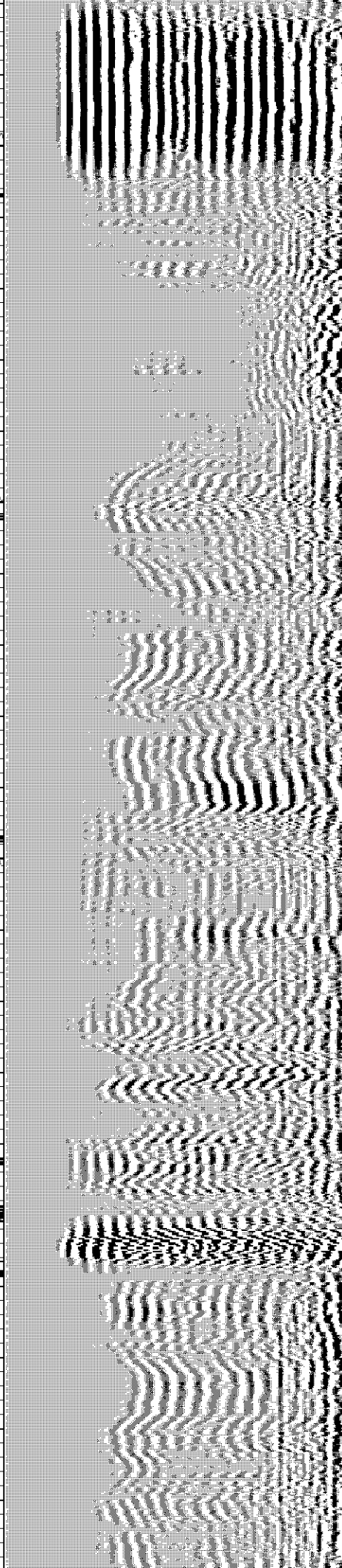
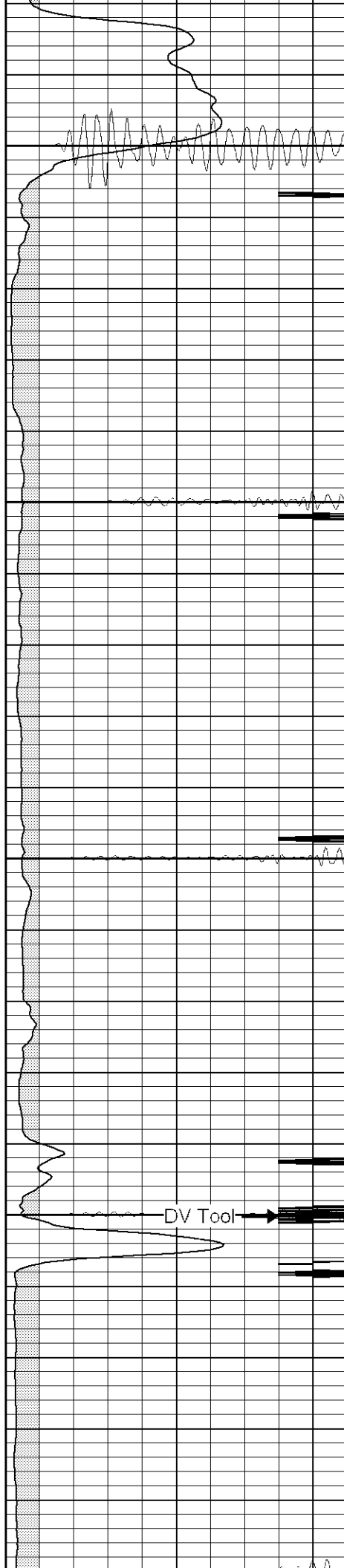
1300

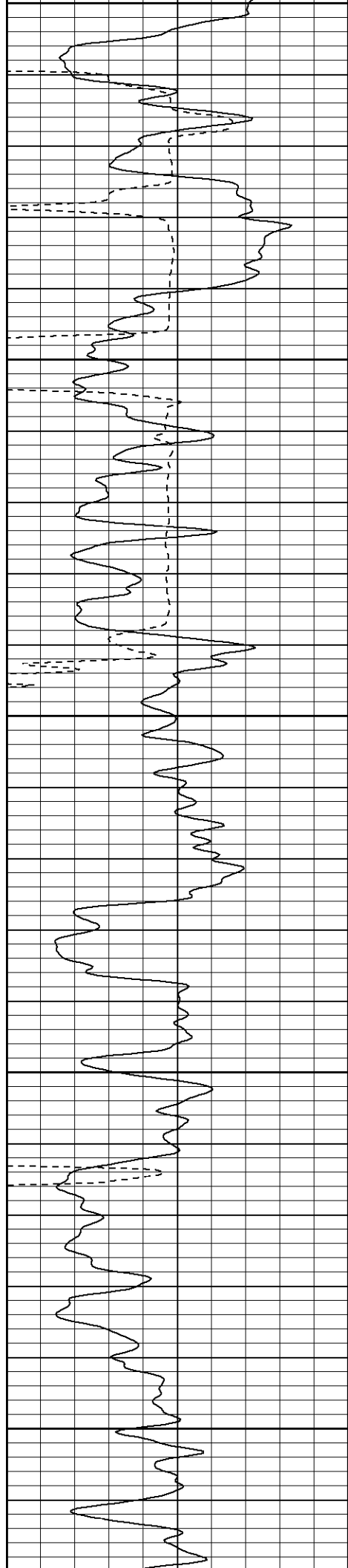
1350

1400

1450

1500





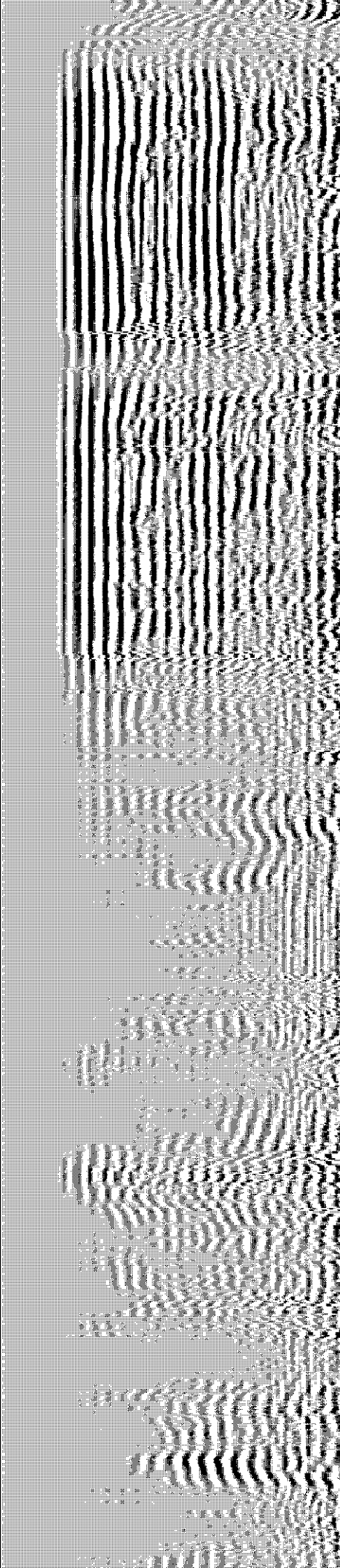
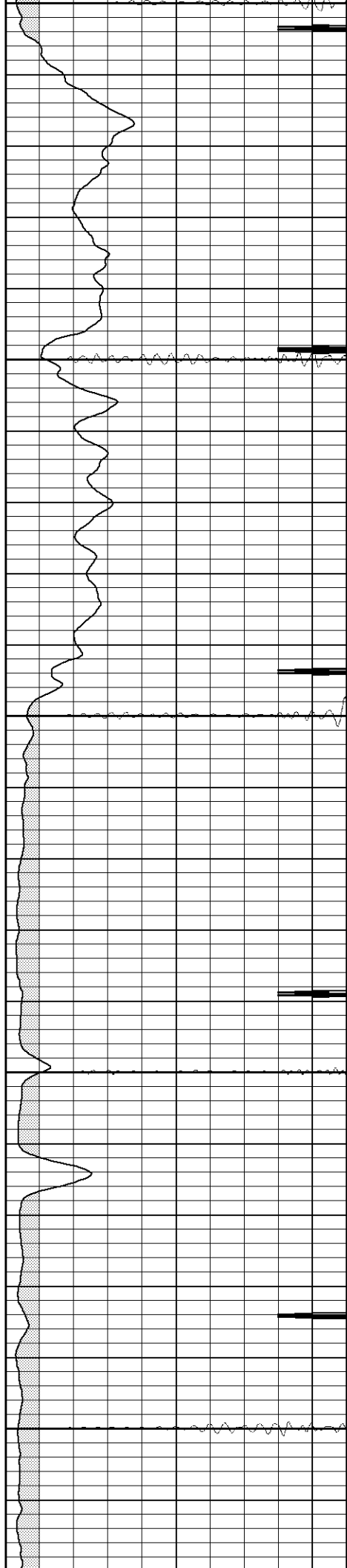
1500

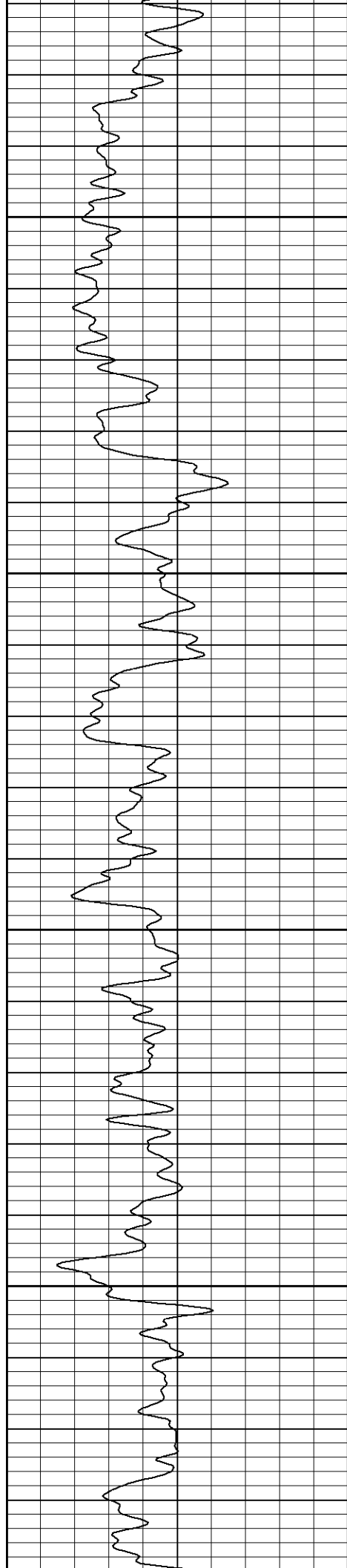
1550

1600

1650

1700



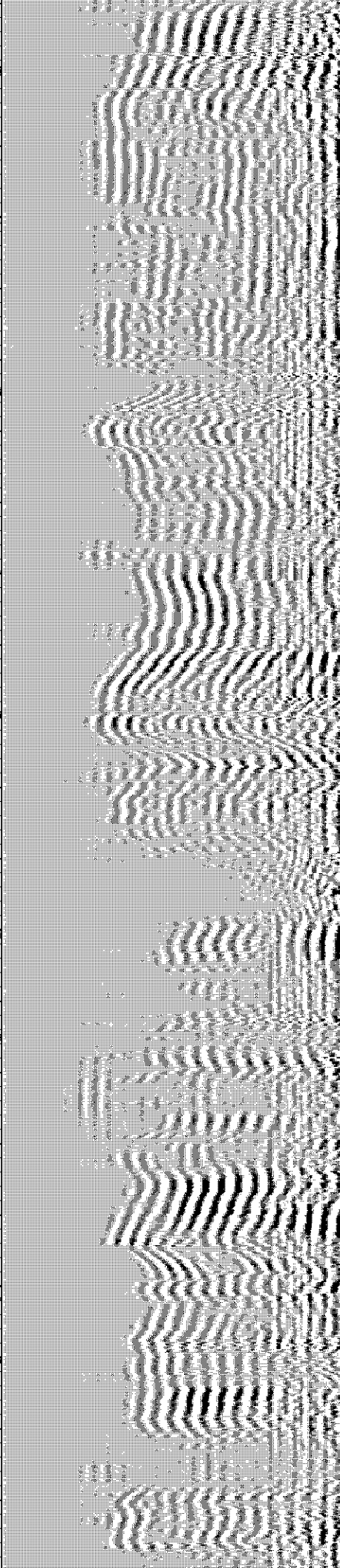
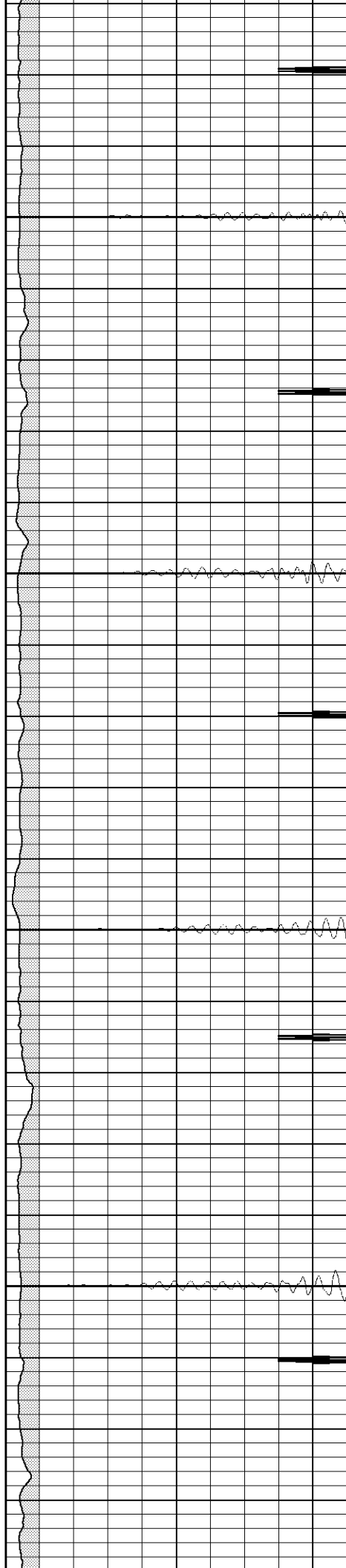


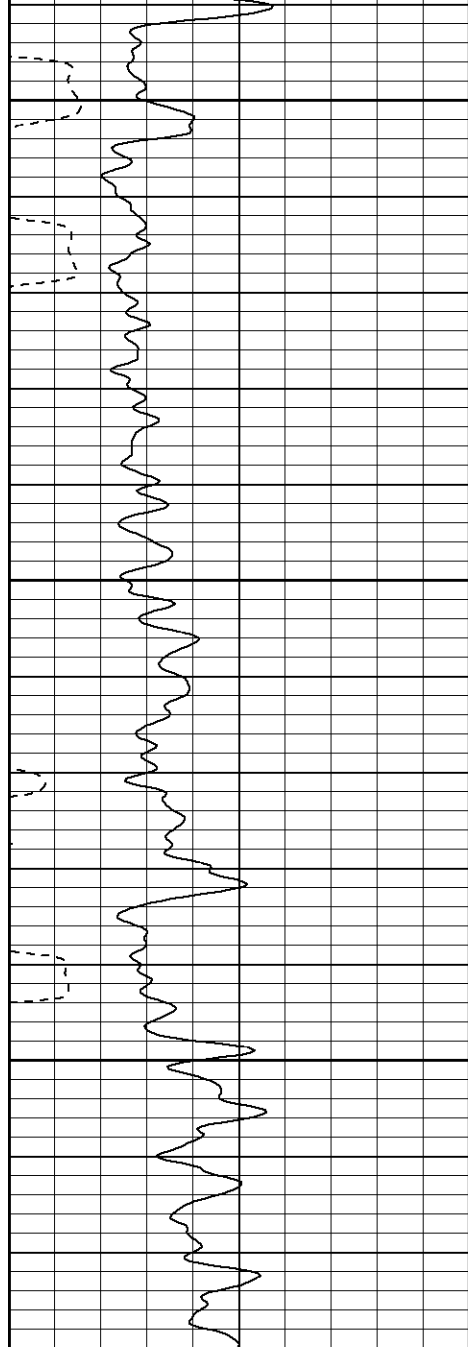
1750

1800

1850

1900

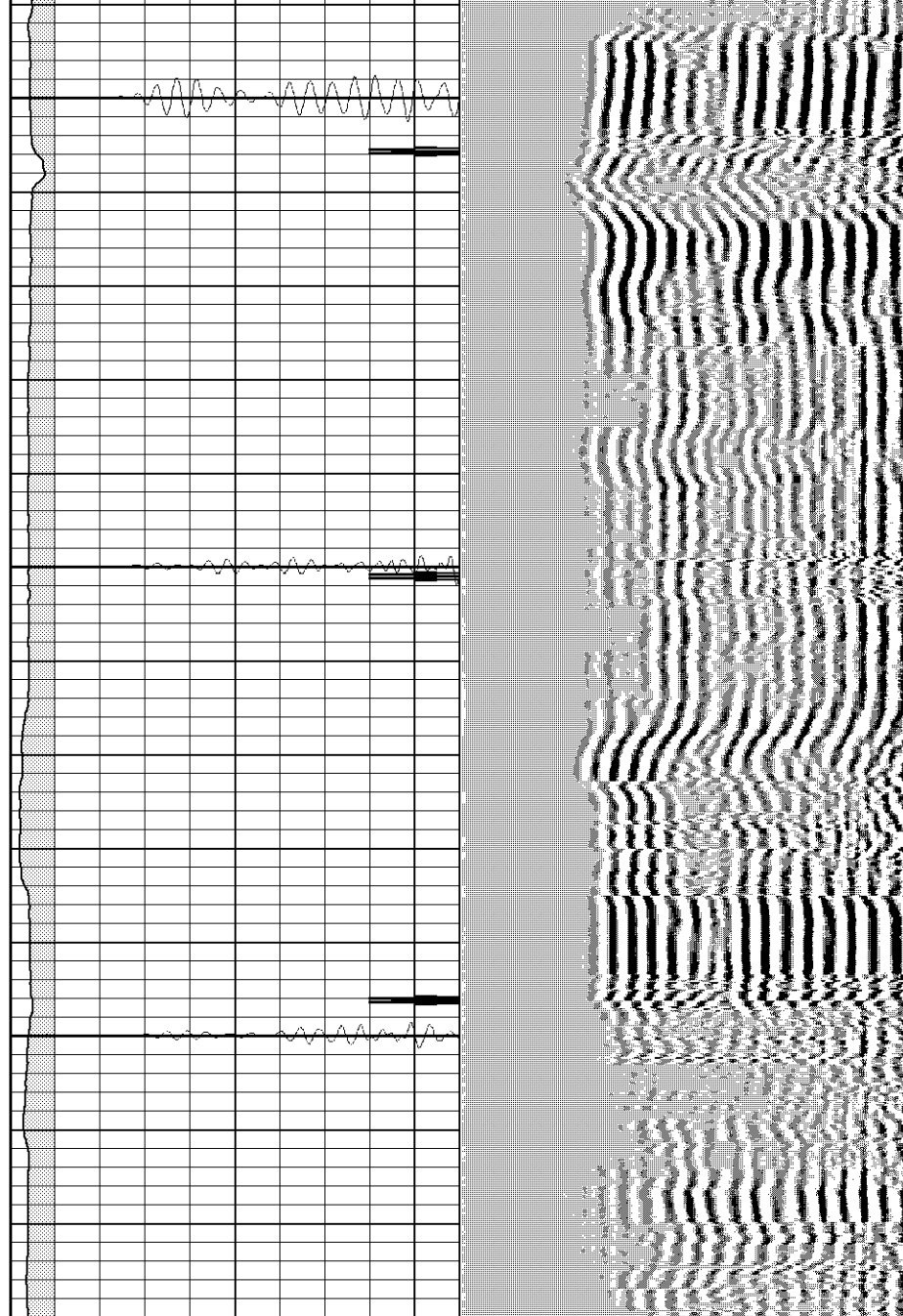




1950

2000

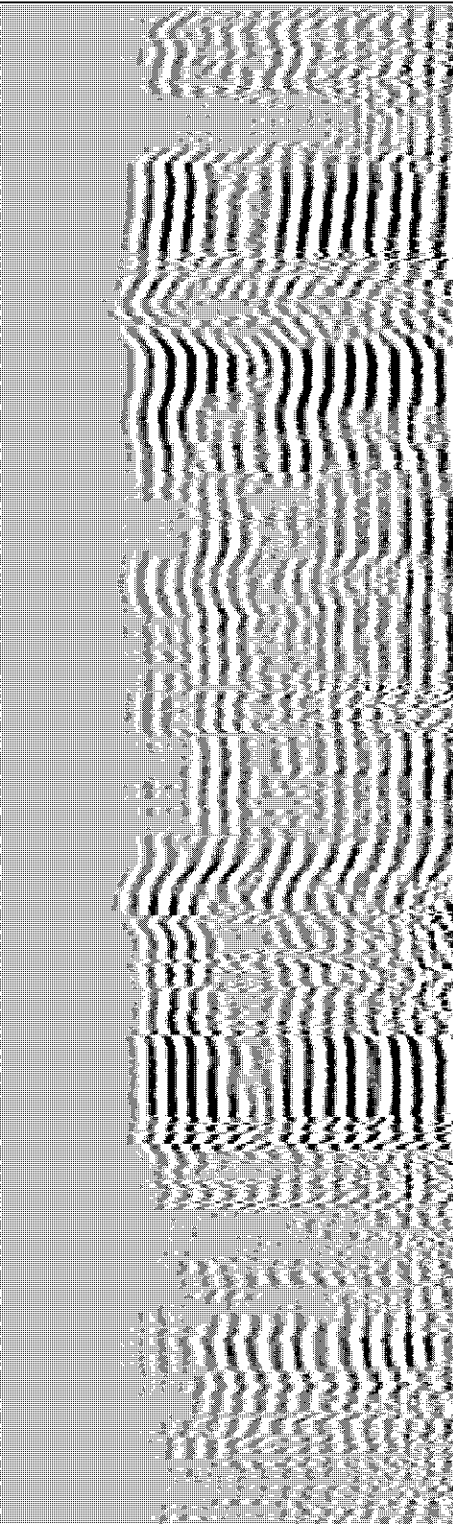
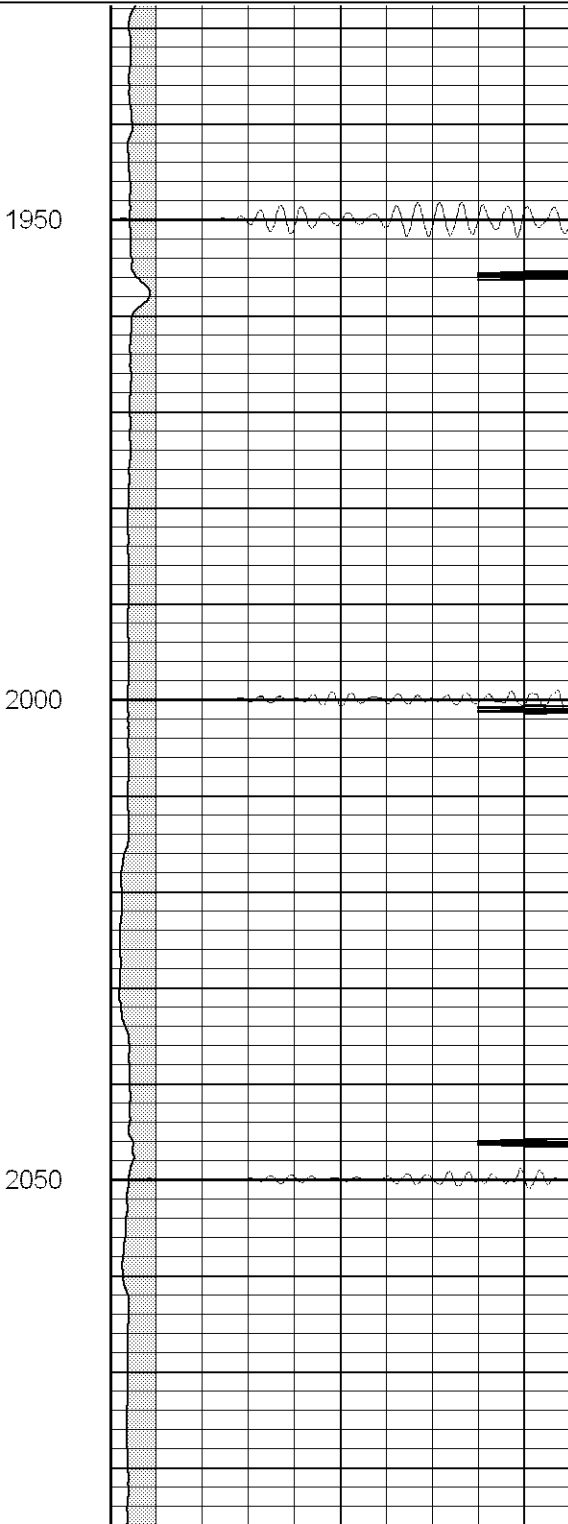
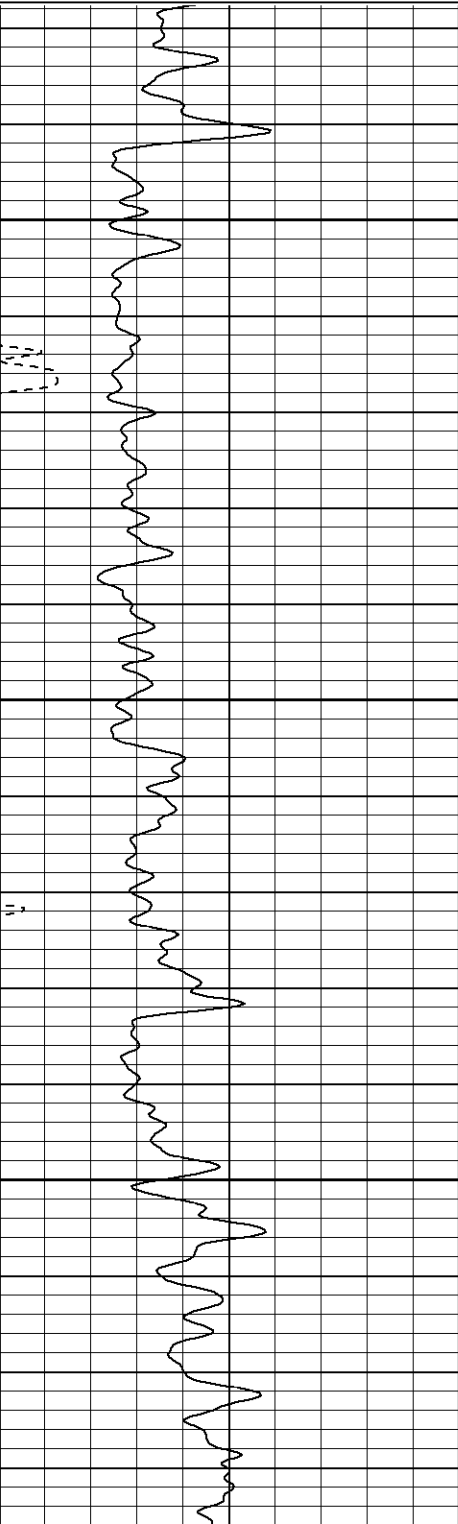
2050

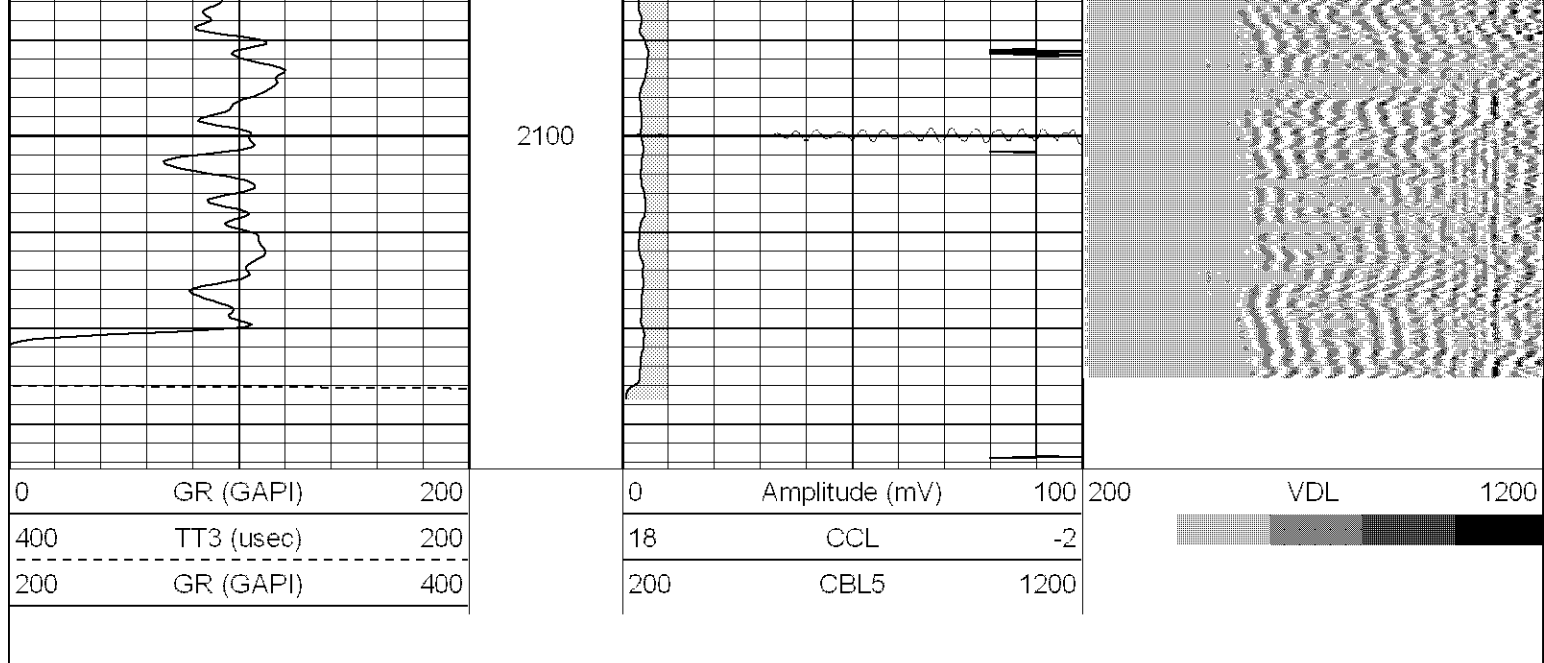


Database File: ac1807-092706b.db
Dataset Pathname: pass1
Presentation Format: cblrt
Dataset Creation: Wed Sep 27 09:47:52 2006 by Log Warrior 7.0 STD Ope
Charted by: Depth in Feet scaled 1:240

0	GR (GAPI)	200
400	TT3 (usec)	200
200	GR (GAPI)	400

0	Amplitude (mV)	100
18	CCL	-2
200	CBL5	1200





Cement Bond Log Calibration Report

Serial Number: Titan3
 Tool Model: T3
 Performed: Wed Sep 27 09:46:20 2006

Depth: 443.682 ft
 Casing Diameter: 5.5 in

	3' Spacing	5' Spacing	
Signal Zero:	1	1	mV
Calibrated Amplitude:	71.921	71.921	mV
Reading at Signal Zero:	0	0.00651855	V
Reading in Free Pipe:	0.9	1.22969	V
Gain:	78.8011	57.9814	
Offset:	1	0.622045	

Gamma Ray Calibration Report

Serial Number: Titan3
 Tool Model: T2
 Performed: Tue Aug 29 11:43:58 2006

Calibrator Value: 200.0 GAPI

Background Reading: 54.0 cps
 Calibrator Reading: 219.0 cps

Sensitivity: 1.1500 GAPI/cps

Sensor	Offset (ft)	Schematic	Description	Len (ft)	OD (in)	Wt (lb)
GR	13.64		GR-T2 (Titan3)	2.52	2.44	25.00
WVF5	9.49		CBL-T3 (Titan3)	7.23	2.44	110.00
WVF3	8.49					
CENT	5.15					

