

Patterson

**CEMENT BOND
GAMMA RAY
LOG**

Company		XTO Energy, Inc.	
Well		Hill Ranch 35-05	
Field		Purgatoire River	
County		Las Animas	
State		CO	
Location:		API # : 05 071 08801 00	
SEC 35 TWP 34S RGE 67W		2085' FNL & 1133' FWL	
Permanent Datum		Ground Level	Elevation 7895'
Log Measured From		Ground Level	
Drilling Measured From		Ground Level	
Other Services		Elevation	
		K.B. -----	
		D.F. -----	
		G.L. 7895'	
Date	9-21-06		
Run Number	One		
Depth Driller	2500'		
Depth Logger	2376'		
Bottom Logged Interval	2374'		
Top Log Interval	Surface		
Open Hole Size	7 7/8"		
Type Fluid	Water		
Density / Viscosity	///		
Max. Recorded Temp.	113F		
Estimated Cement Top	24'		
Time Well Ready	Portable Mast		
Time Logger on Bottom	11:02AM		
Equipment Number	T875		
Location	Trinidad		
Recorded By	E. Ray		
Witnessed By			
Borehole Record		Tubing Record	
Run Number	Bit	From	To
		Size	Weight
		From	To
Casing Record	Size	Wgt/Ft	Top
Surface String	8 5/8"		00
Prot. String			320'
Production String	5 1/2"		00
Liner			N/A

<<< Fold Here >>>

All interpretations are opinions based on inferences from electrical or other measurements and we cannot and do not guarantee the accuracy or correctness of any interpretation, and we shall not, except in the case of gross or willful negligence on our part, be liable or responsible for any loss, costs, damages, or expenses incurred or sustained by anyone resulting from any interpretation made by any of our officers, agents or employees. These interpretations are also subject to our general terms and conditions set out in our current Price Schedule.

Comments

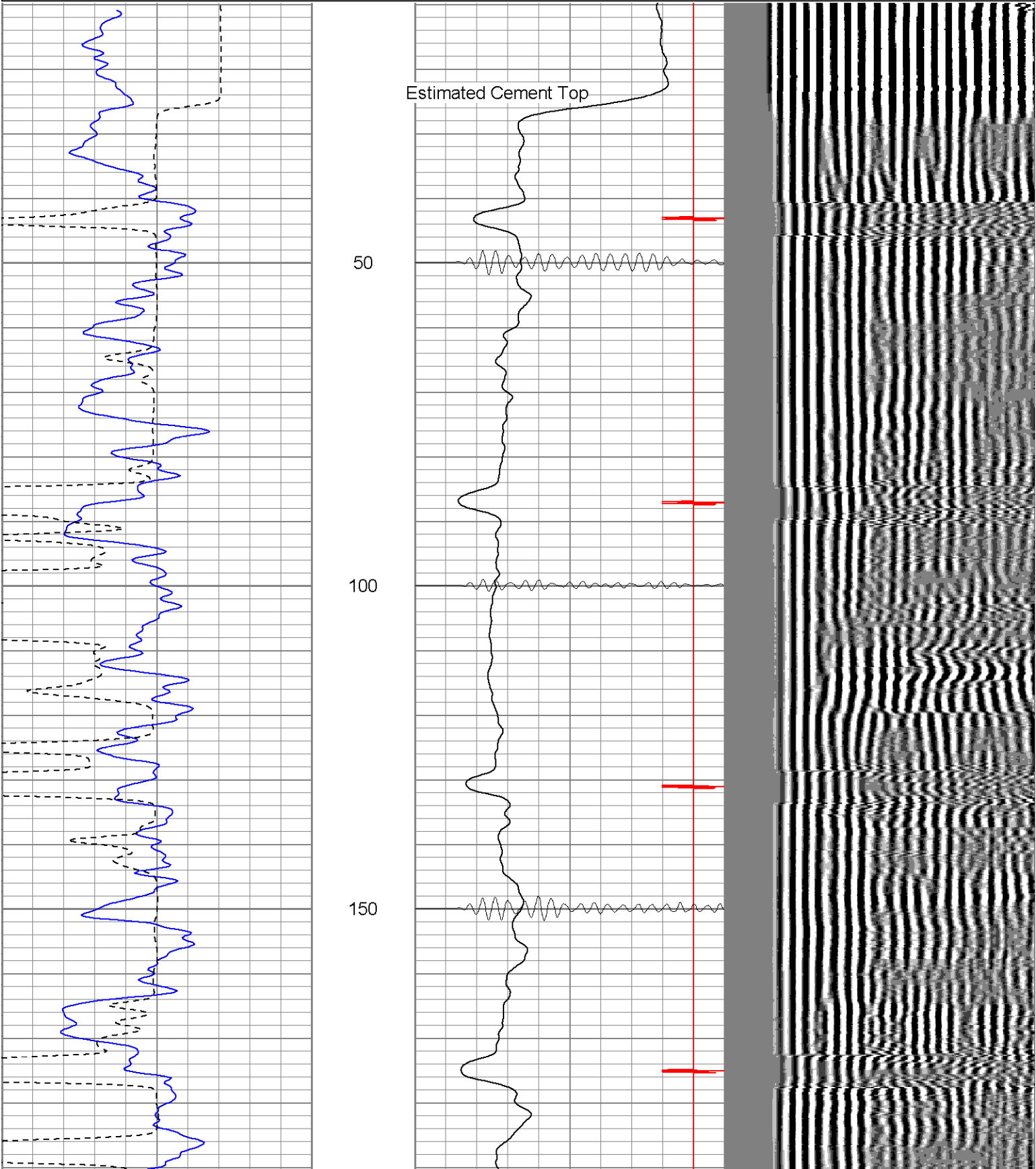
Up Lorencito Canyon XTO hill, 5th Right, @ T stay Right,
1st Location on Left

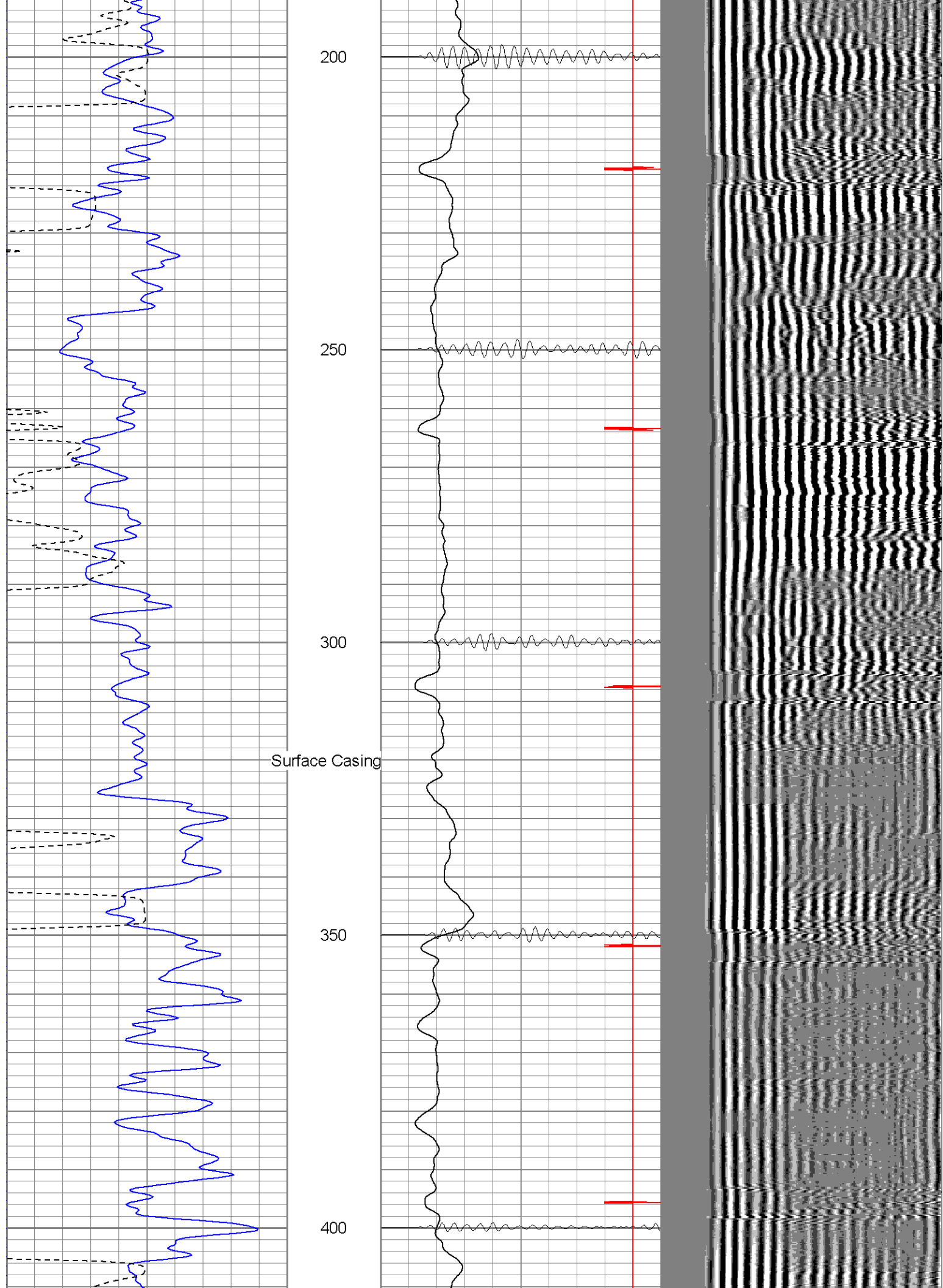
Patterson

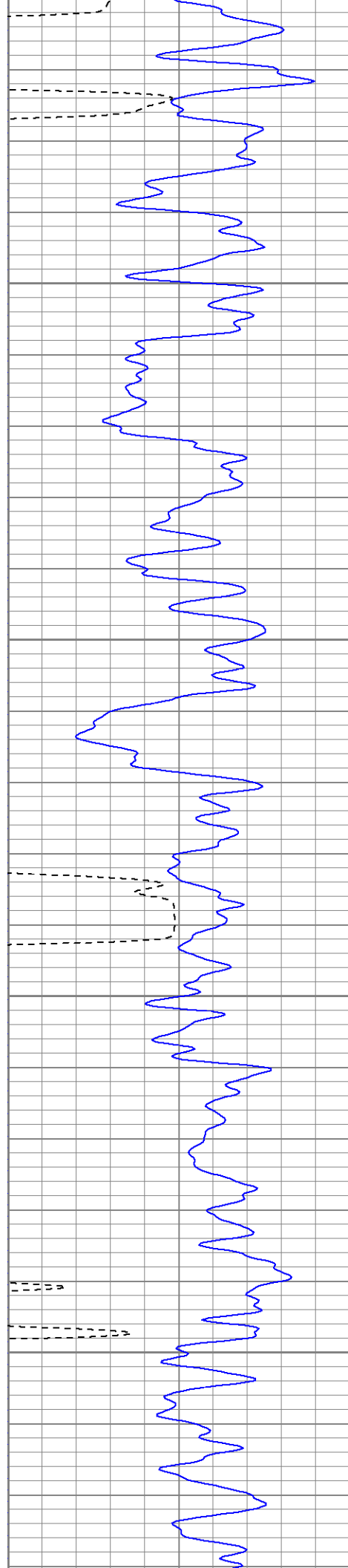
Main Pass

Database File: hillranch350592106b.db
Dataset Pathname: pass2
Presentation Format: cblrt
Dataset Creation: Thu Sep 21 11:18:59 2006 by Log Open-Cased 060407
Charted by: Depth in Feet scaled 1:240

0	GR (GAPI)	200	0	AMP3 (mV)	100	200	Variable Density	1200
200	GR (GAPI)	400	18	CCL	-2			
400	TT3 (usec)	200	200	CBL5	1200			





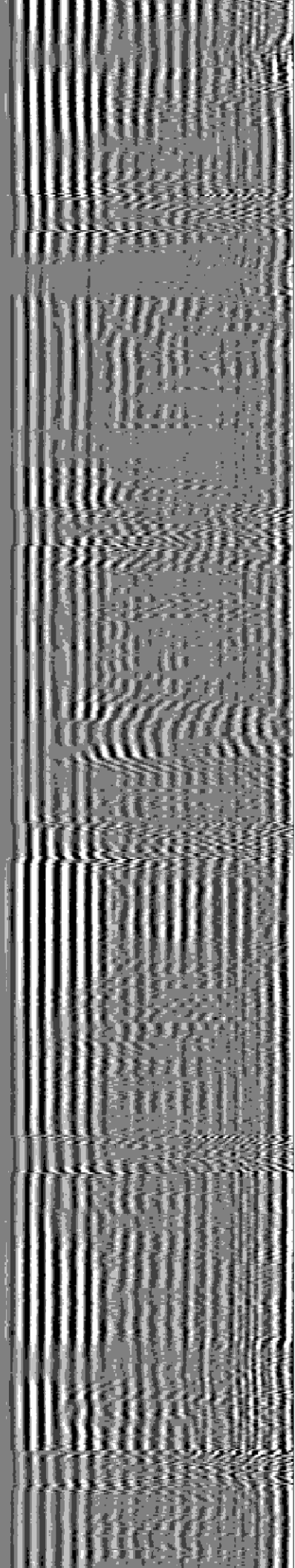


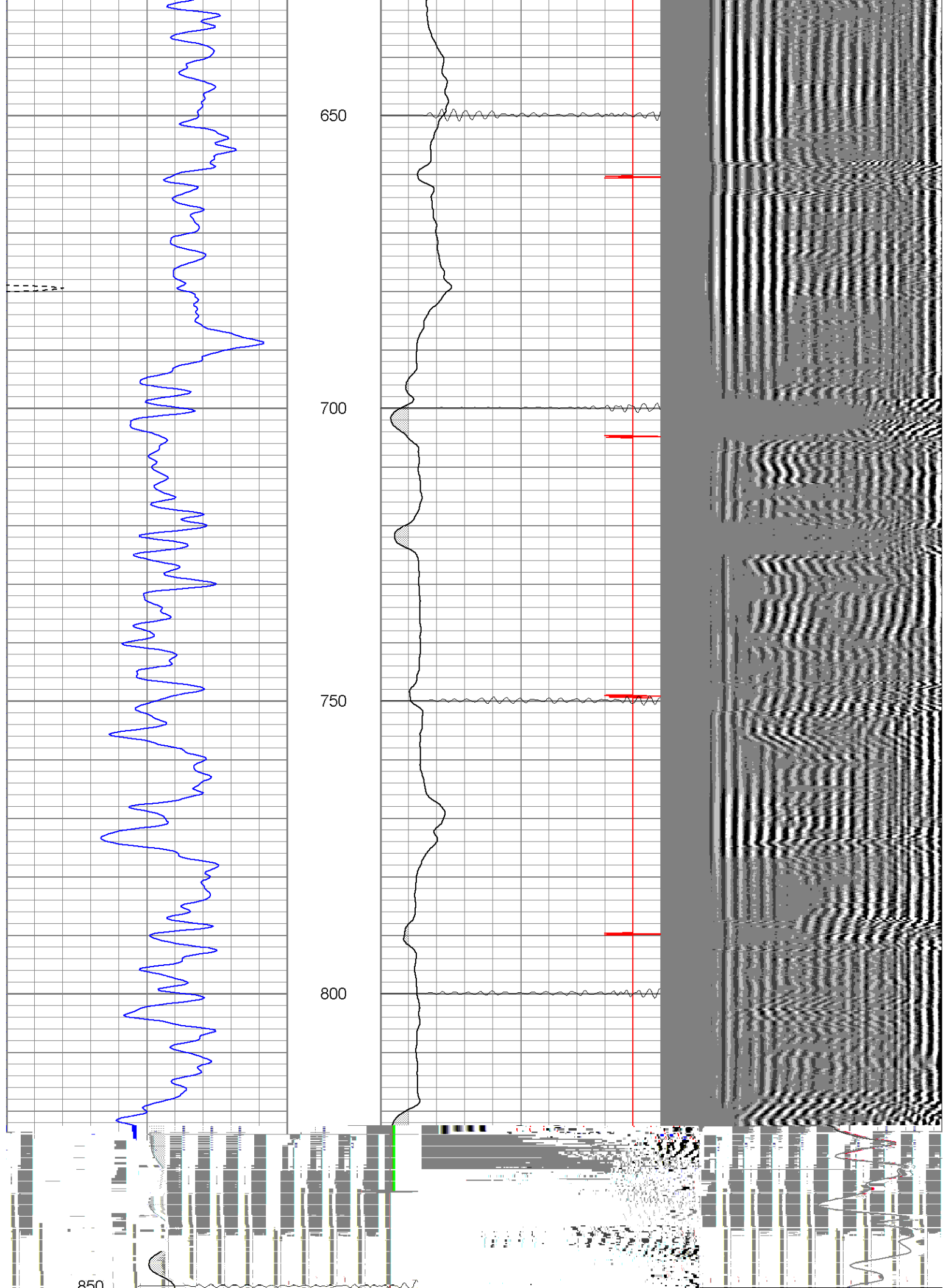
450

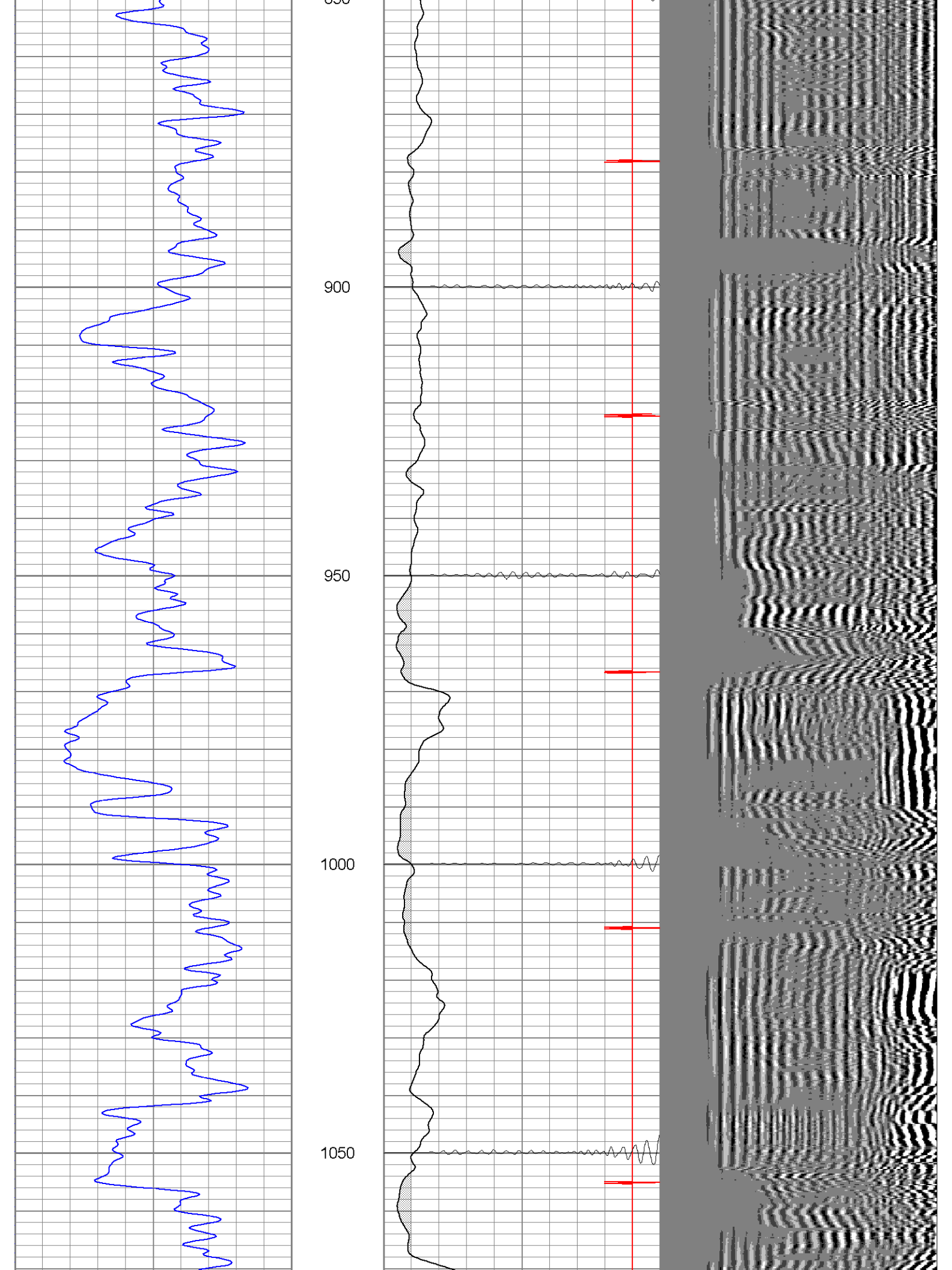
500

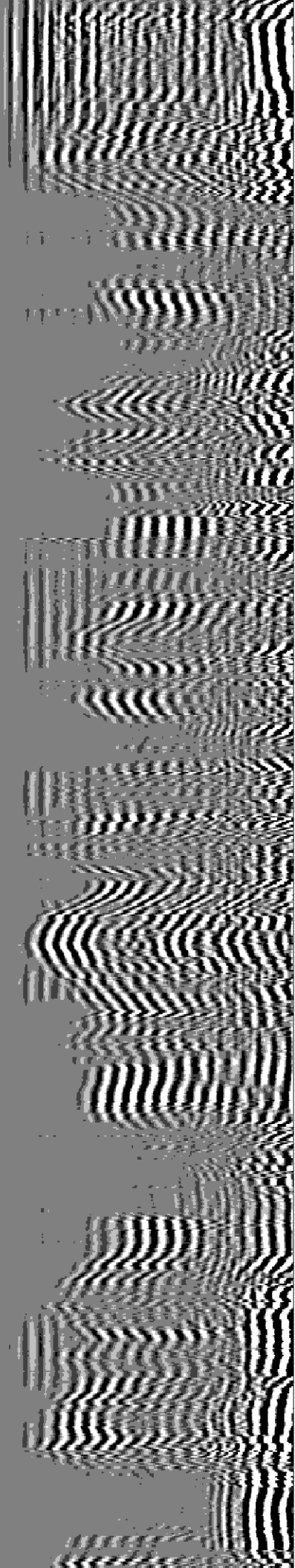
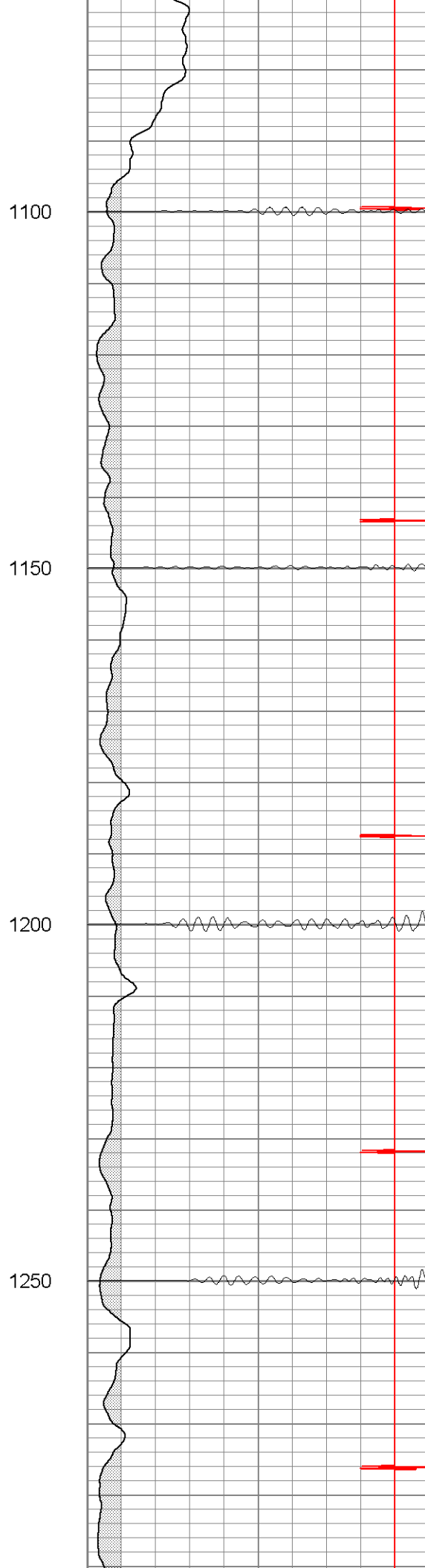
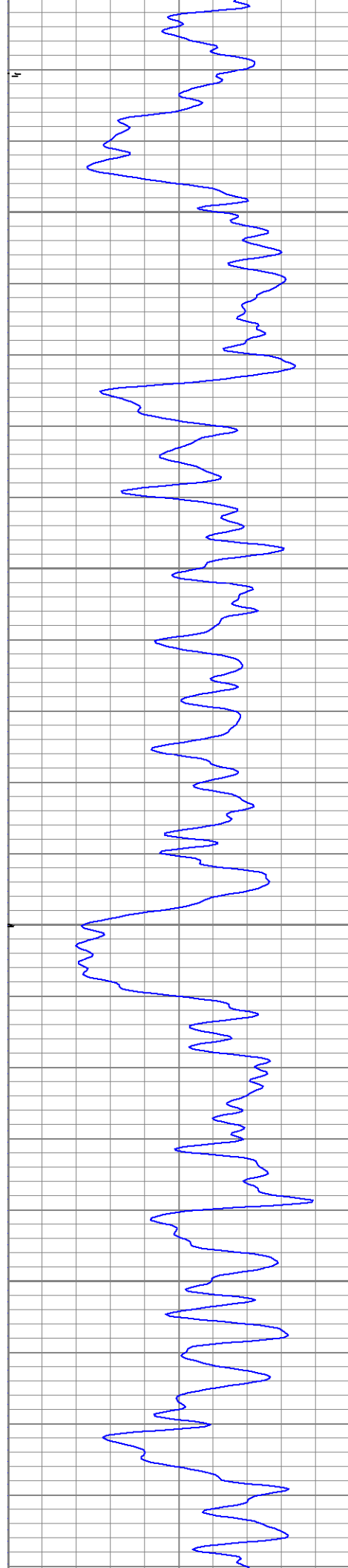
550

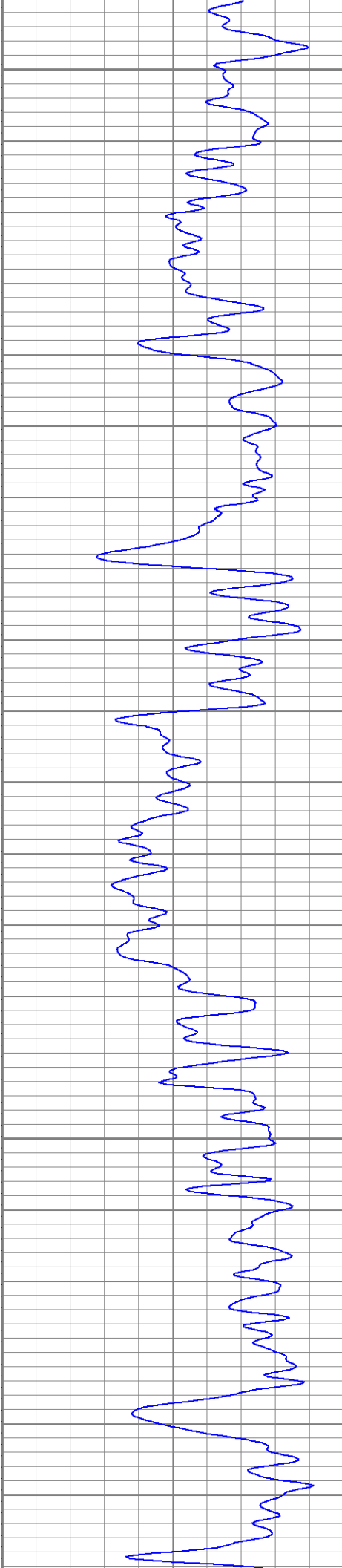
600











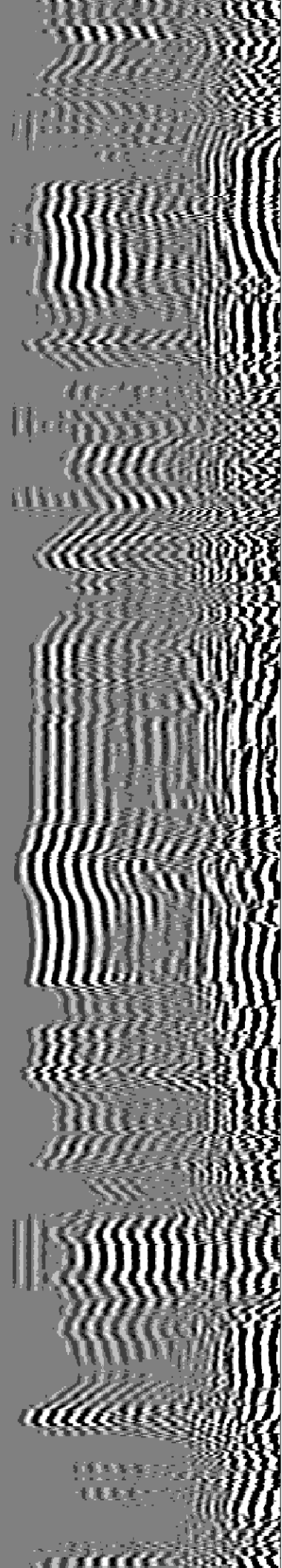
1300

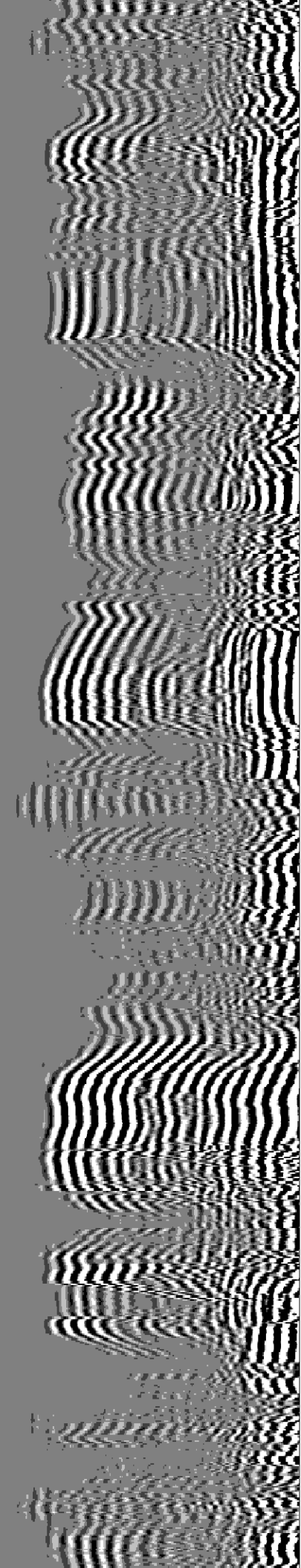
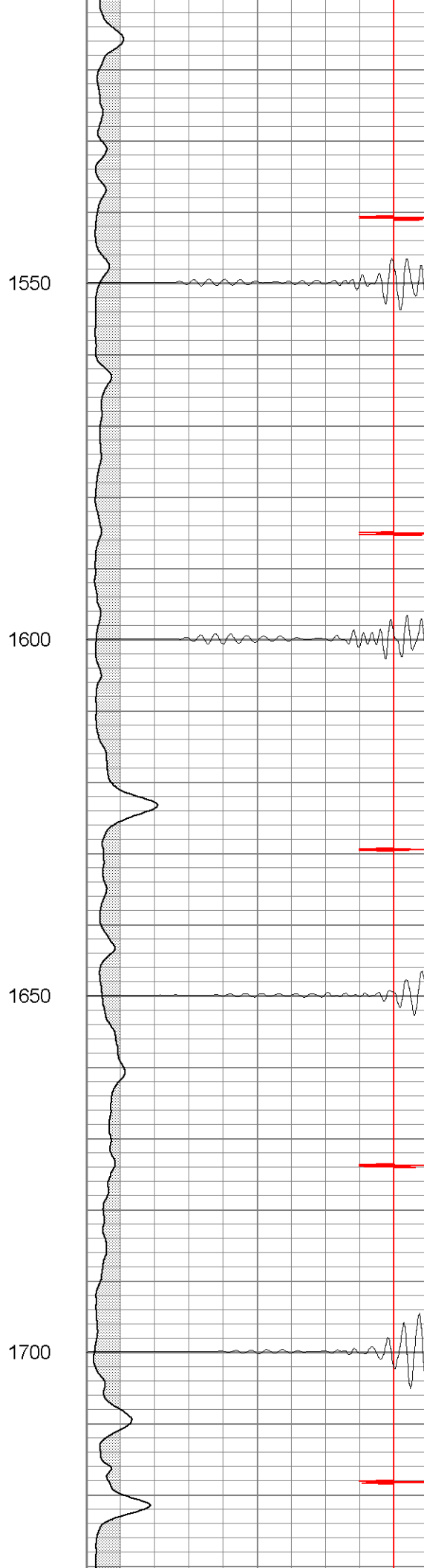
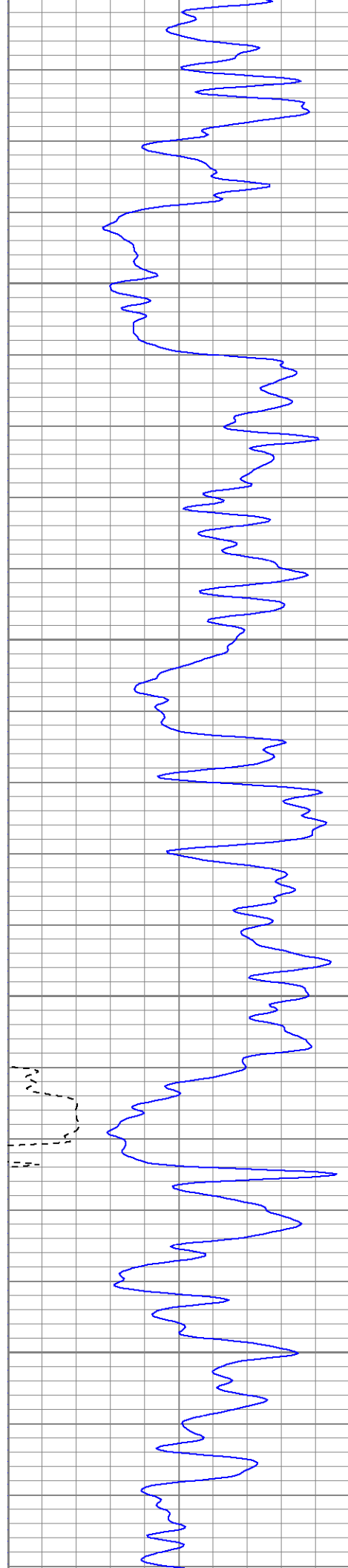
1350

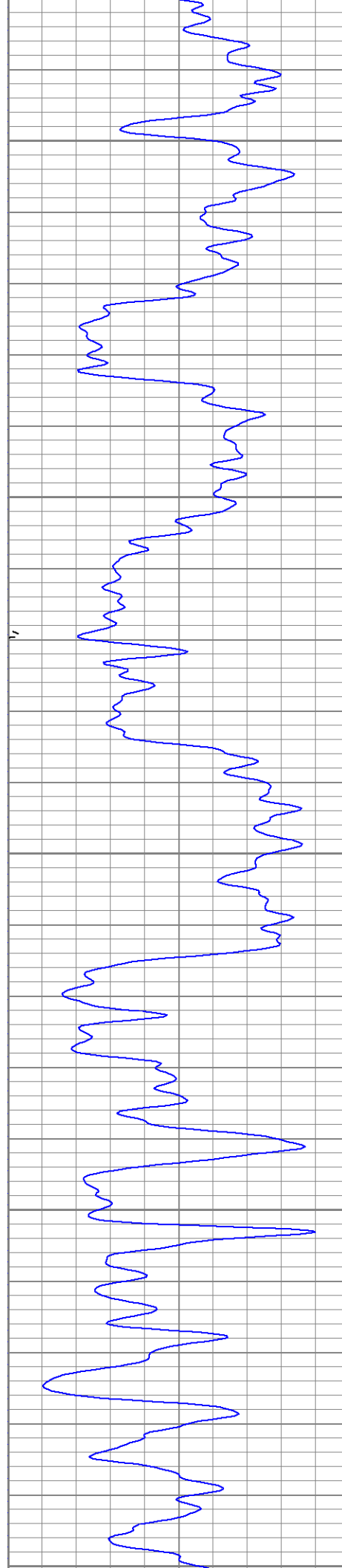
1400

1450

1500







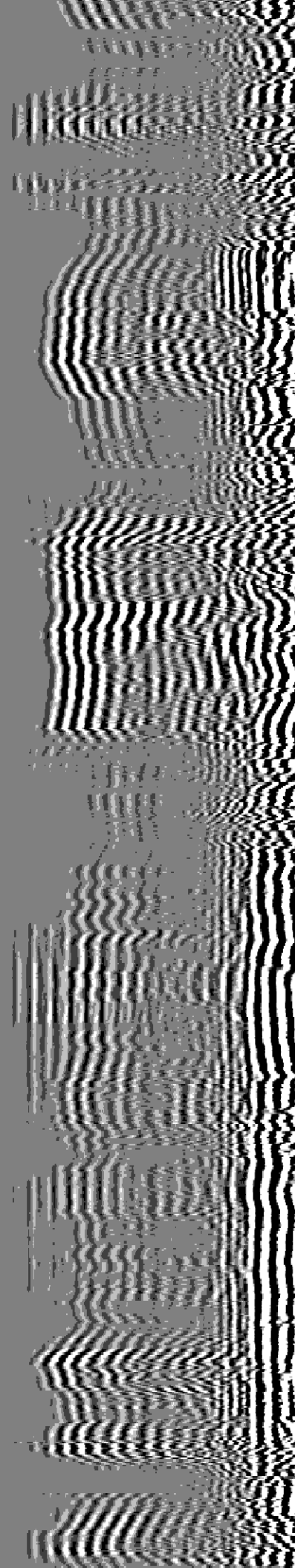
1750

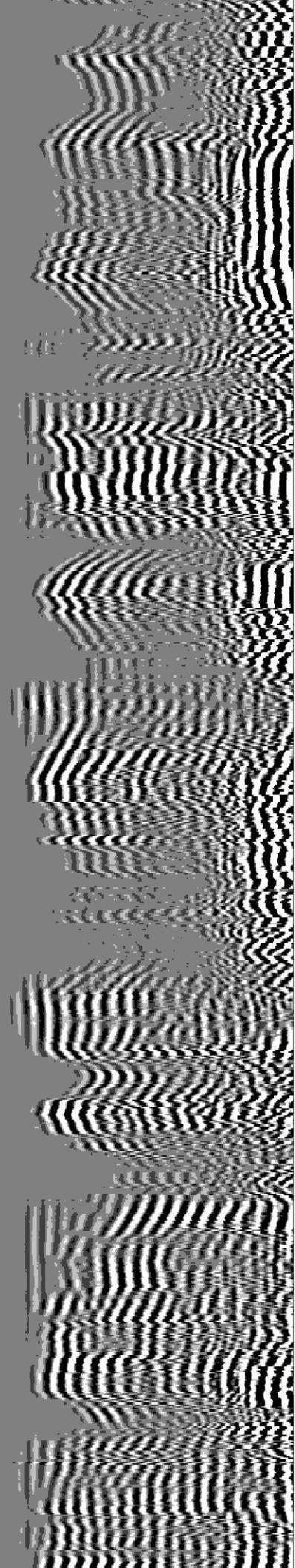
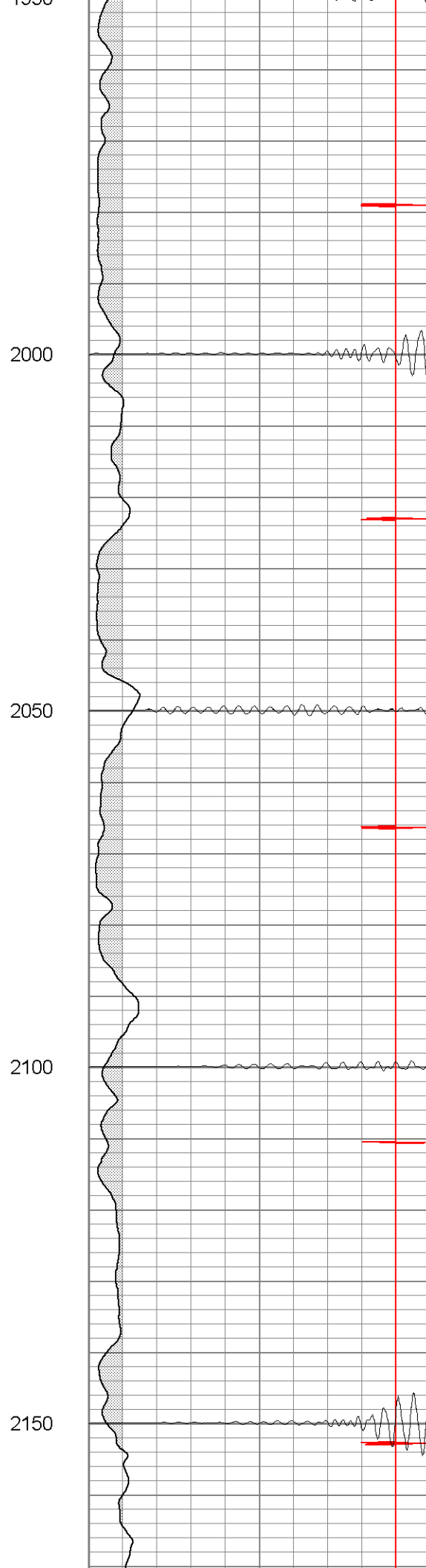
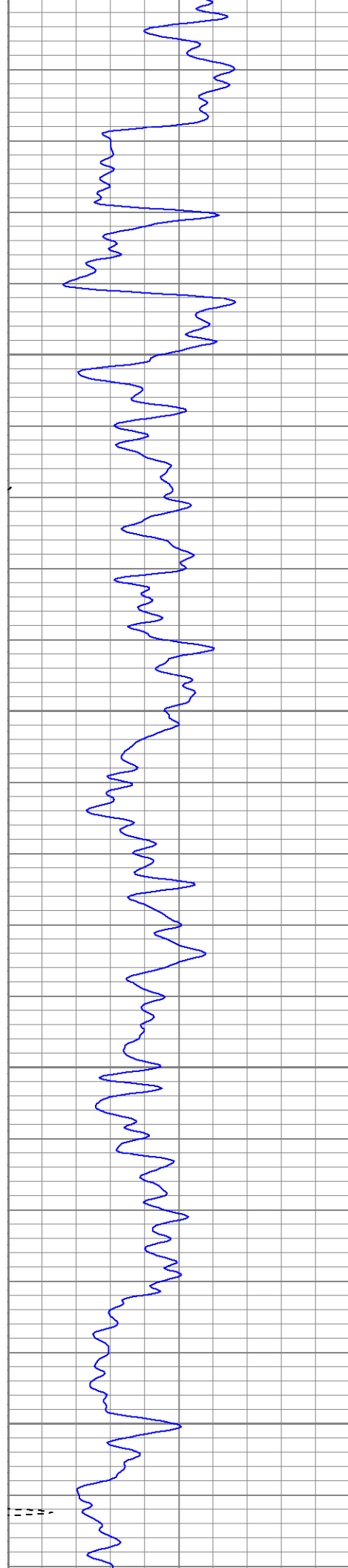
1800

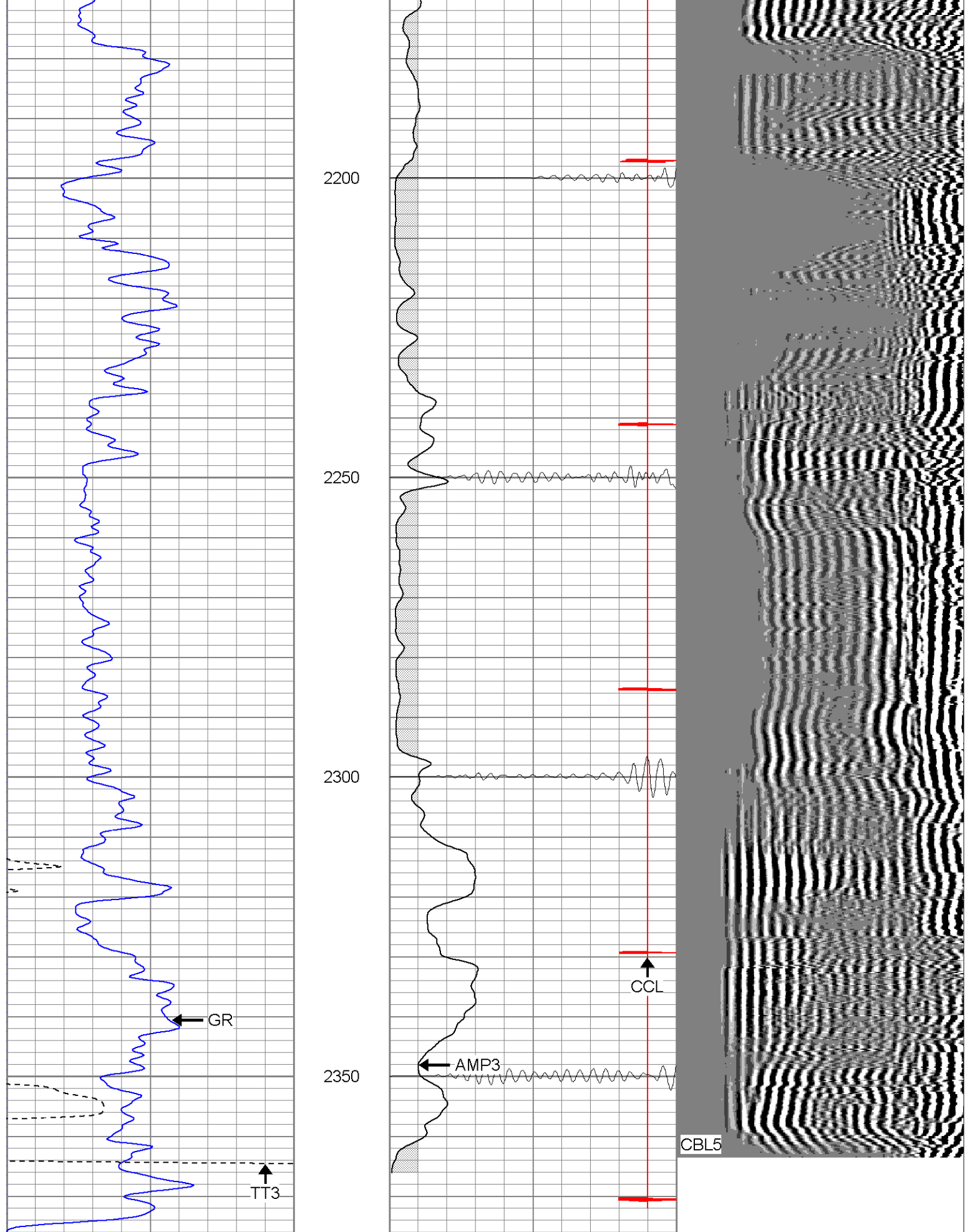
1850

1900

1950



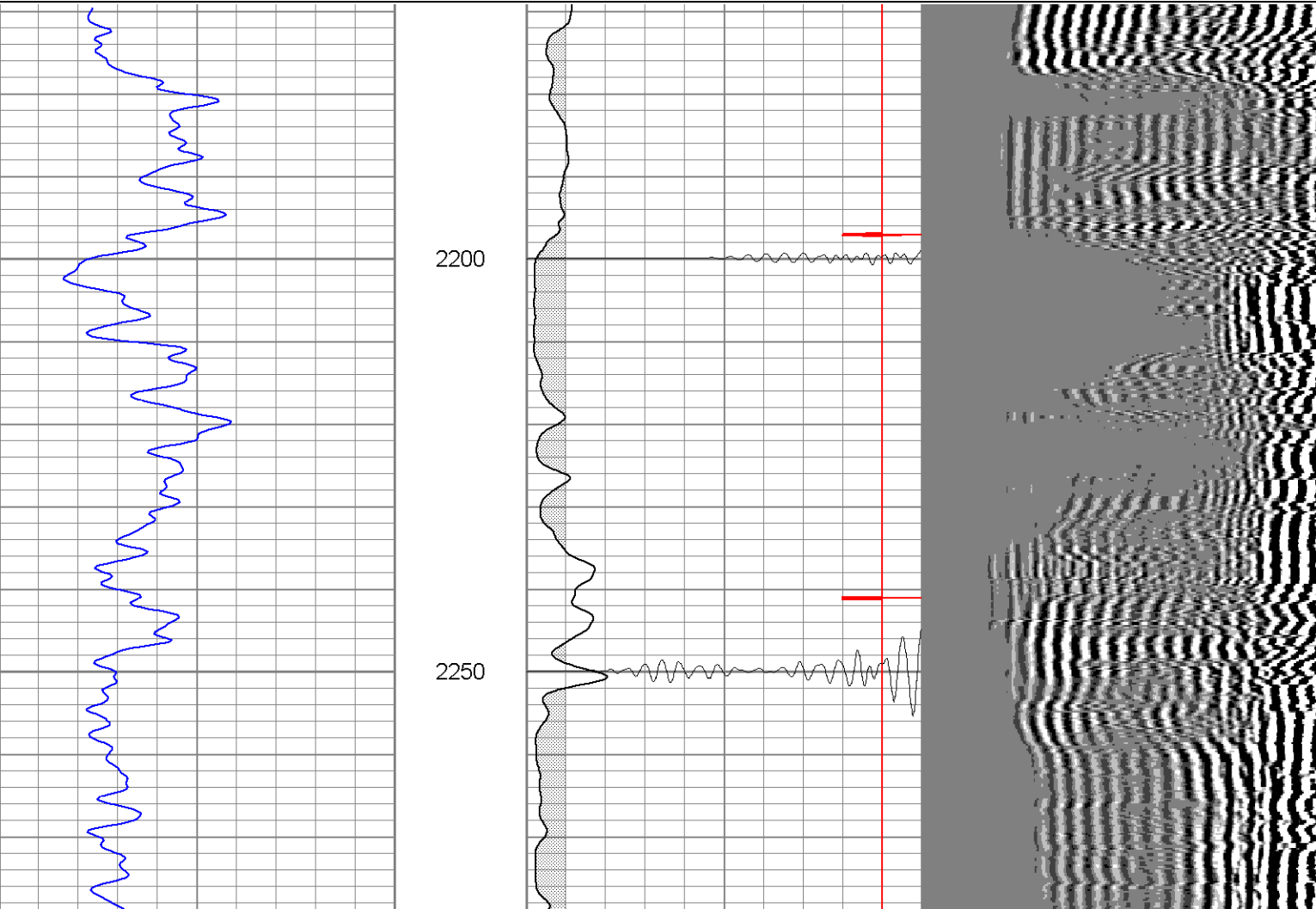


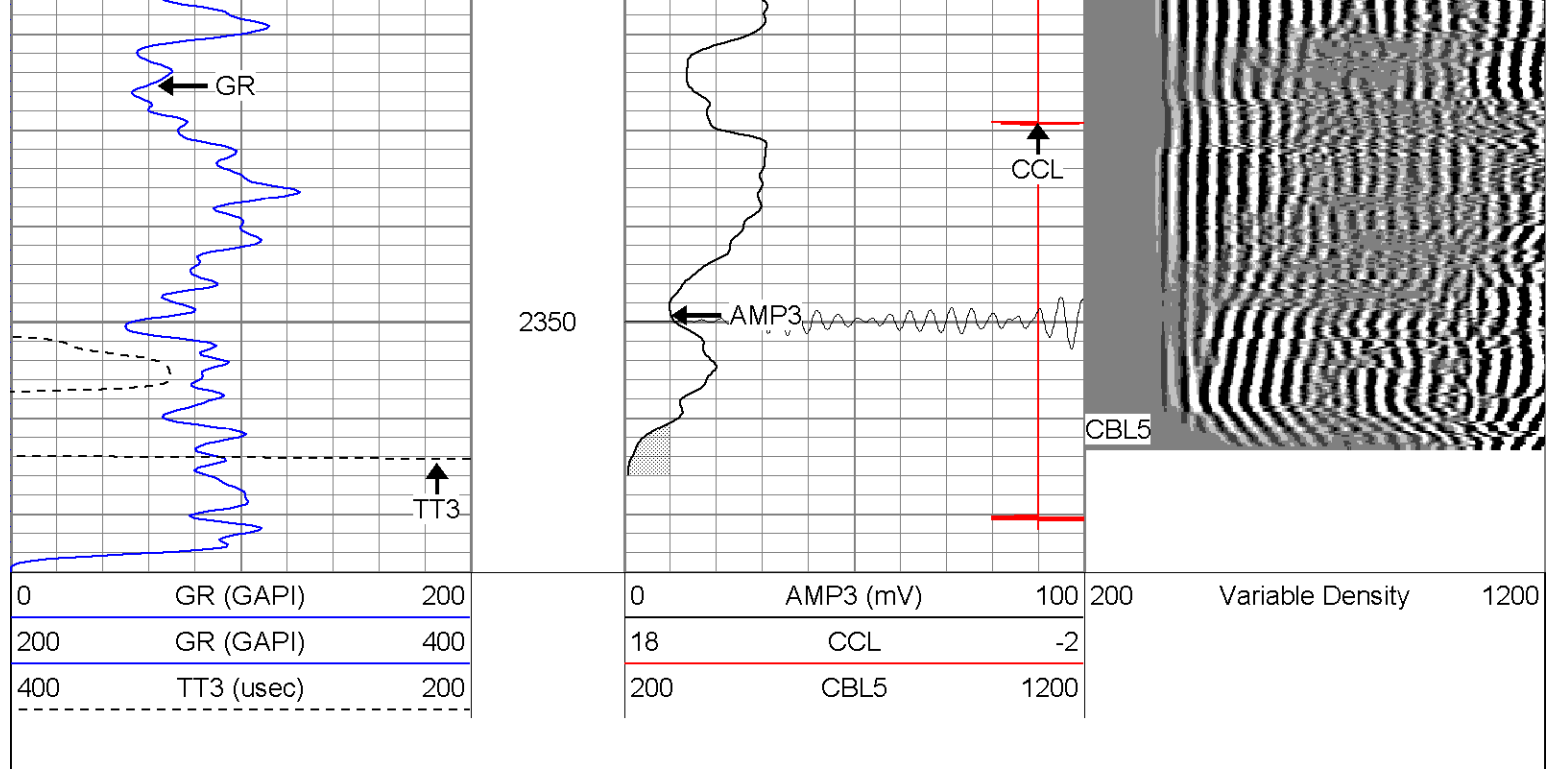


0	GR (GAPI)	200	0	AMP3 (mV)	100	200	Variable Density	1200
200	GR (GAPI)	400	18	CCL	-2			
400	TT3 (usec)	200	200	CBL5	1200			

Database File: hillranch350592106b.db
Dataset Pathname: pass1.1
Presentation Format: cblrt
Dataset Creation: Thu Sep 21 12:36:32 2006 by Calc Open-Cased 060407
Charted by: Depth in Feet scaled 1:240

0	GR (GAPI)	200	0	AMP3 (mV)	100	200	Variable Density	1200
200	GR (GAPI)	400	18	CCL	-2			
400	TT3 (usec)	200	200	CBL5	1200			





Calibration Report

Database File: hillranch350592106b.db
 Dataset Pathname: pass1
 Dataset Creation: Thu Sep 21 11:11:06 2006 by Log Open-Cased 060407

Gamma Ray Calibration Report

Serial Number: Titan2.75
 Tool Model: 2.75
 Performed: Wed Sep 06 09:59:59 2006

Calibrator Value: 200.0 GAPI

Background Reading: 40.0 cps
 Calibrator Reading: 240.0 cps

Sensitivity: 1.1000 GAPI/cps

Cement Bond Log Calibration Report

Serial Number: Titan4
 Tool Model: 4
 Performed: Thu Sep 07 10:29:39 2006

Depth: 1054.62 ft
 Casing Diameter: 5.5 in

	3' Spacing	5' Spacing	
Signal Zero:	0	1	mV
Calibrated Amplitude:	85	85	mV
Reading at Signal Zero:	0.00161133	0.0143555	V
Reading in Free Pipe:	1.15	1.65081	V
Gain:	74.0168	51.3306	
Offset:	-0.119265	0.263125	

Sensor	Offset (ft)	Schematic	Description	Len (ft)	OD (in)	Wt (lb)
CHD	20.38		CHD-None (0)	0.75	1.50	5.00
CHD	10.00					

