



SUPERIOR
Black Lick, Pa.
Mercer, Pa.
Wooster, Oh.
Cleveland, Ok.
Trinidad, Co.

DUAL INDUCTION LOG

Company XTO Energy Inc.
Well Hill Ranch 36-06
Field Purgatoire River
County Las Animas State Colorado

Location: API # : 05 071 09532 00

2127 FNL & 2221' FWL

SEC 36 TWP 34S RGE 67W

Other Services
CDL
NEUTRON

Permanent Datum Ground Level Elevation 7871'
Log Measured From Ground Level
Drilling Measured From Ground Level

Elevation
K.B. -----
D.F. -----
G.L. 7871'

Date 5-1-08

Run Number One

Depth Driller 2490'

Depth Logger 2479'

Bottom Logged Interval 2477'

Top Log Interval Surface Casing

Casing Driller 8 5/8" @ 464'

Casing Logger 464'

Bit Size 7 7/8"

Type Fluid in Hole Water

Density / Viscosity ///

pH / Fluid Loss ///

Source of Sample ///

Rm @ Meas. Temp ///

Rmf @ Meas. Temp ///

Rmc @ Meas. Temp ///

Source of Rmf / Rmc ///

Rm @ BHT ///

Time Circulation Stopped 9:00 A.M.

Time Logger on Bottom 2:35 P.M.

Maximum Recorded Temperature 115 DEG F

Equipment Number T697

Location Trinidad

Recorded By J. Cappellucci

Witnessed By Mr. Don Johnson

<<< Fold Here >>>

All interpretations are opinions based on inferences from electrical or other measurements and we cannot and do not guarantee the accuracy or correctness of any interpretation, and we shall not, except in the case of gross or willful negligence on our part, be liable or responsible for any loss, costs, damages, or expenses incurred or sustained by anyone resulting from any interpretation made by any of our officers, agents or employees. These interpretations are also subject to our general terms and conditions set out in our current Price Schedule.

Comments

Well Directions:

Lorencito to XTO hill, follow all the way to top, cross cattleguard,
drive past Hill ranch 36-02, next location on right.



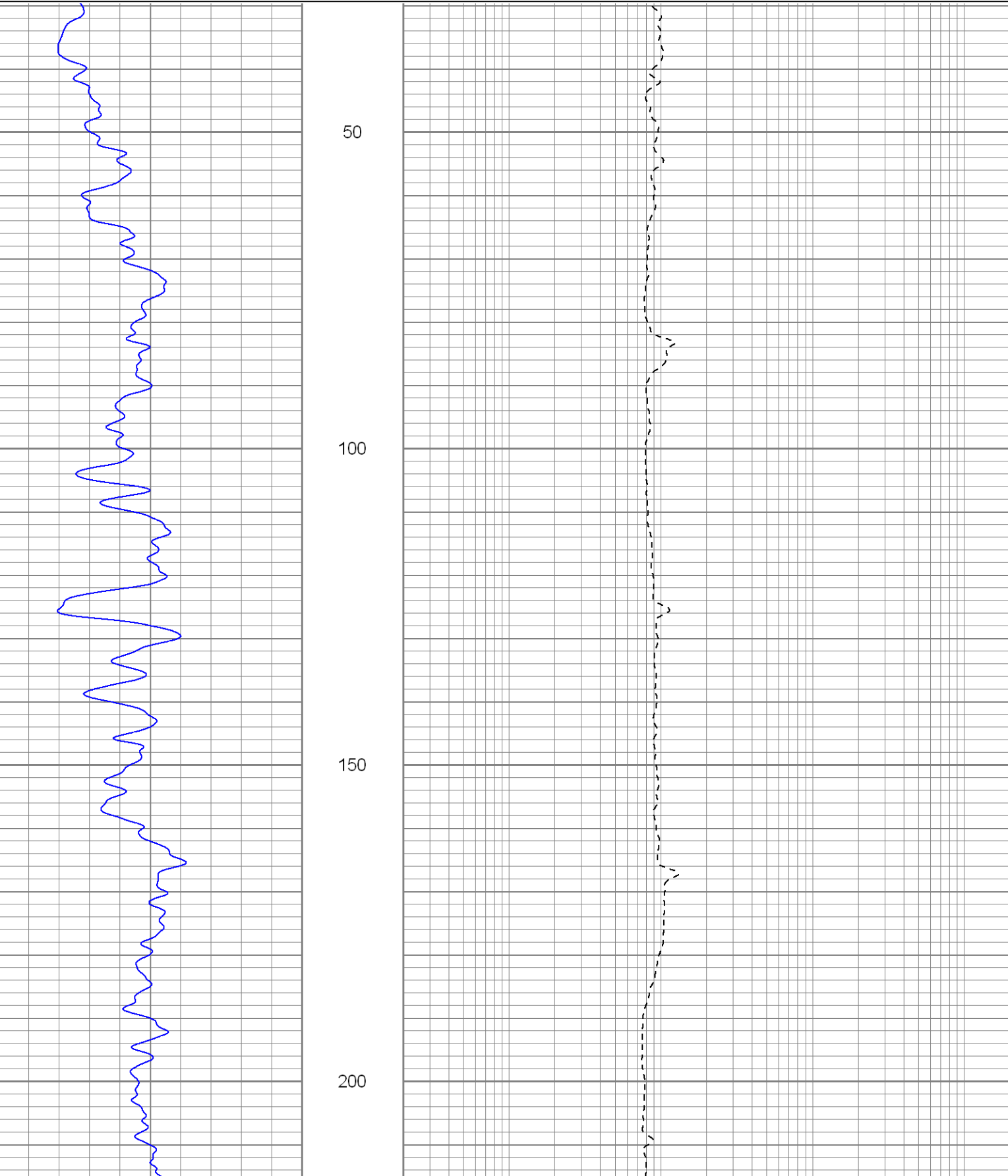
SUPERIOR
Black Lick, Pa.
Mercer, Pa.
Wooster, Oh.
Cleveland, Ok.
Trinidad, Co.

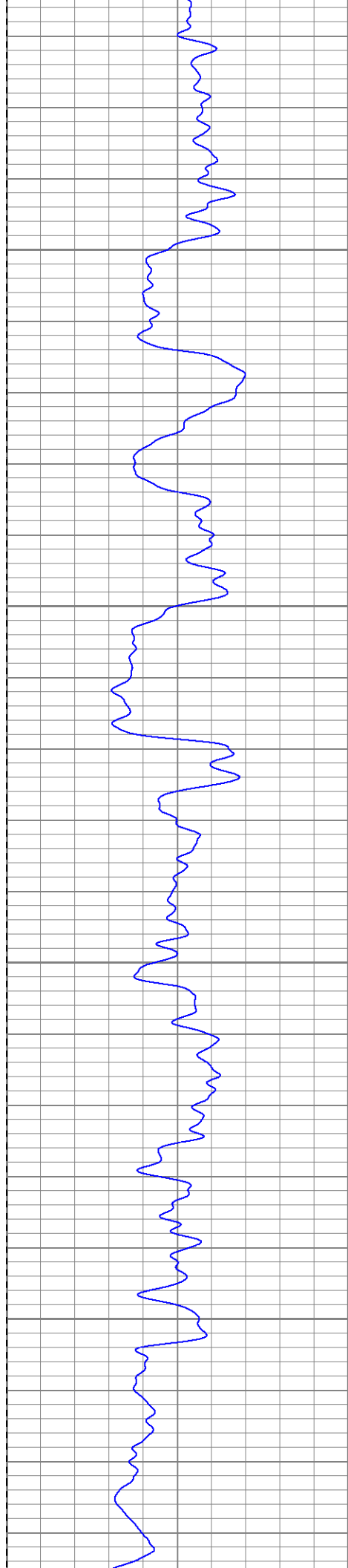
Main Pass

Database File: xtohr3606.db
Dataset Pathname: pass2.1
Presentation Format: dil
Dataset Creation: Thu May 01 16:19:22 2008 by Calc Open-Cased 070814
Charted by: Depth in Feet scaled 1:240

0	GR (GAPI)	200
-200	SP (mV)	0

0.2	RILM (Ohm-m)	2000
0.2	RILD (Ohm-m)	2000
0.2	RLL3 (Ohm-m)	2000



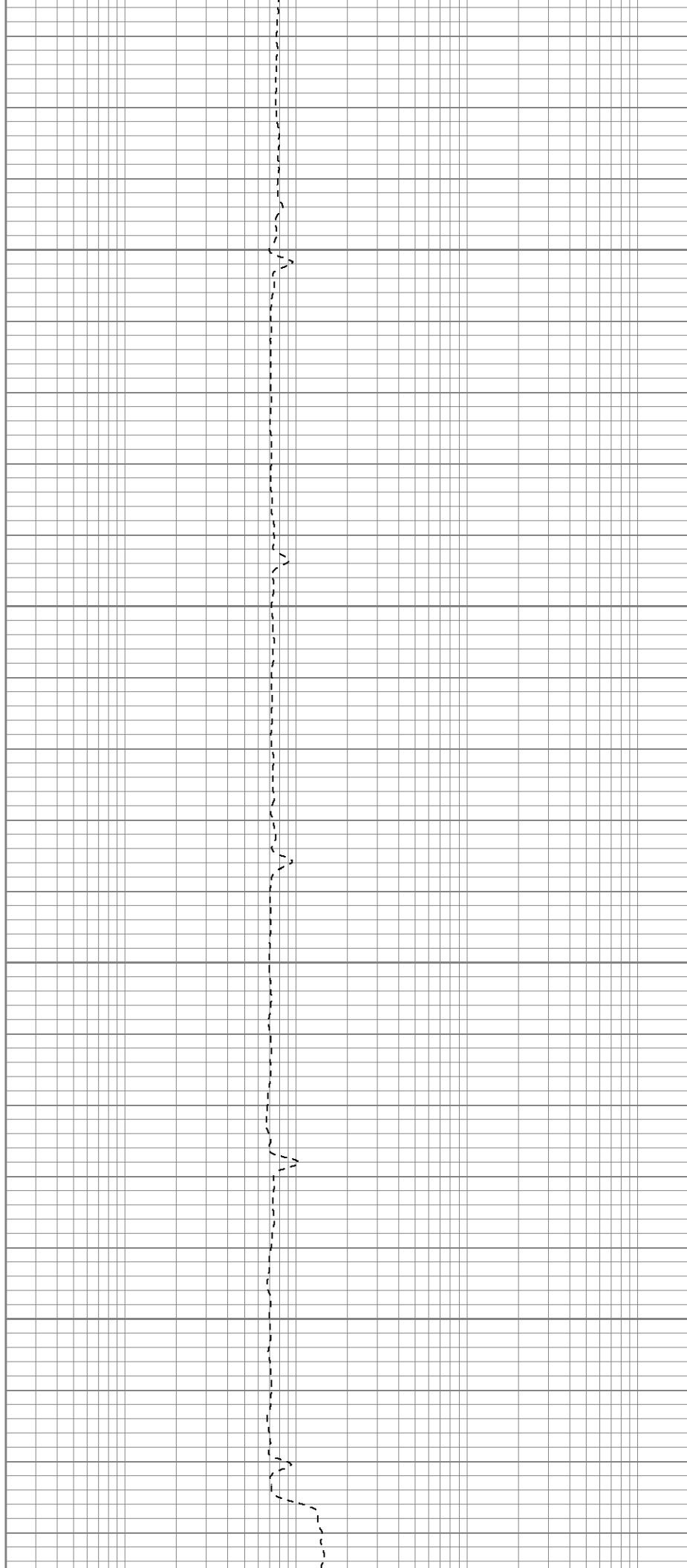


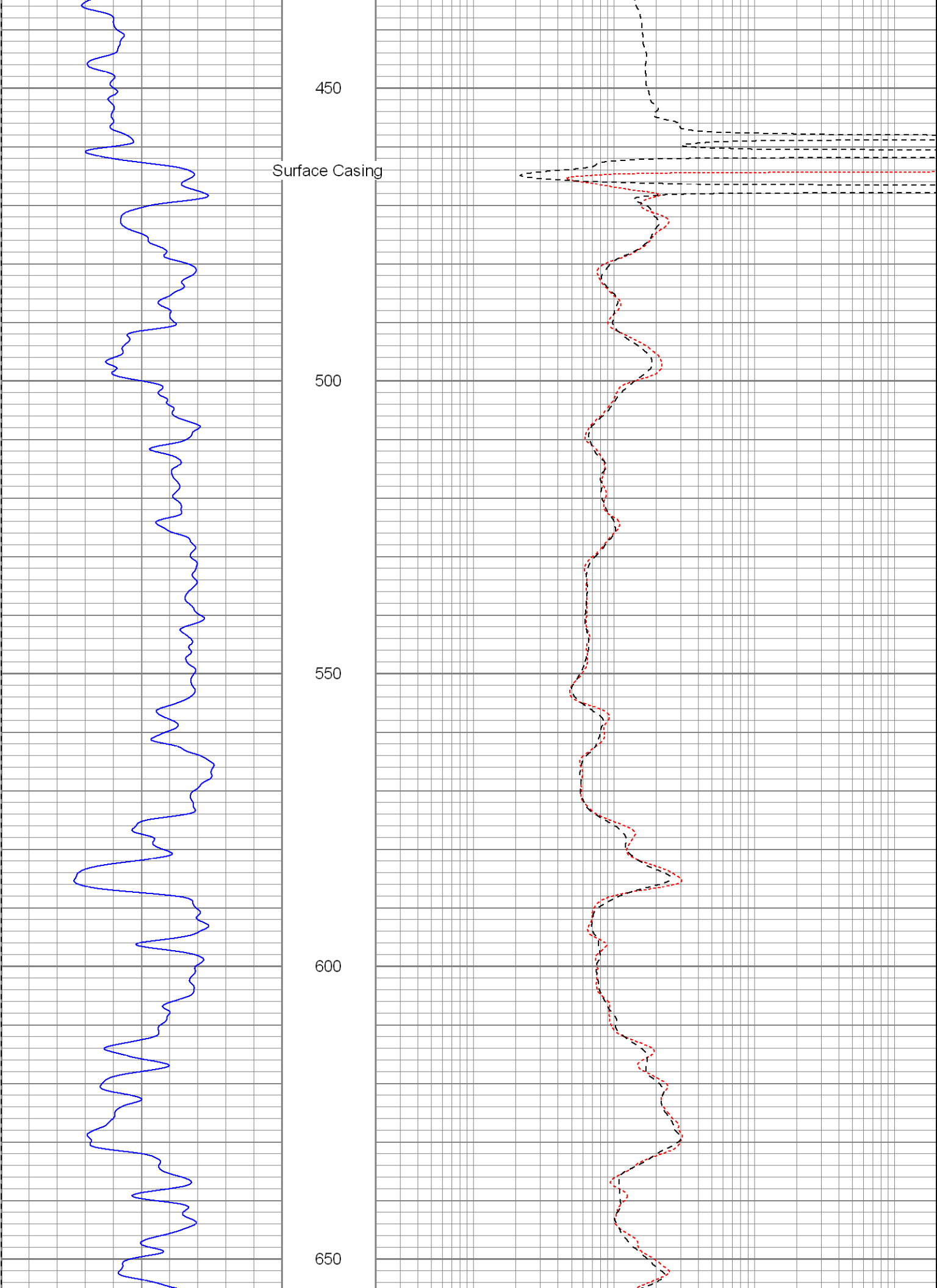
250

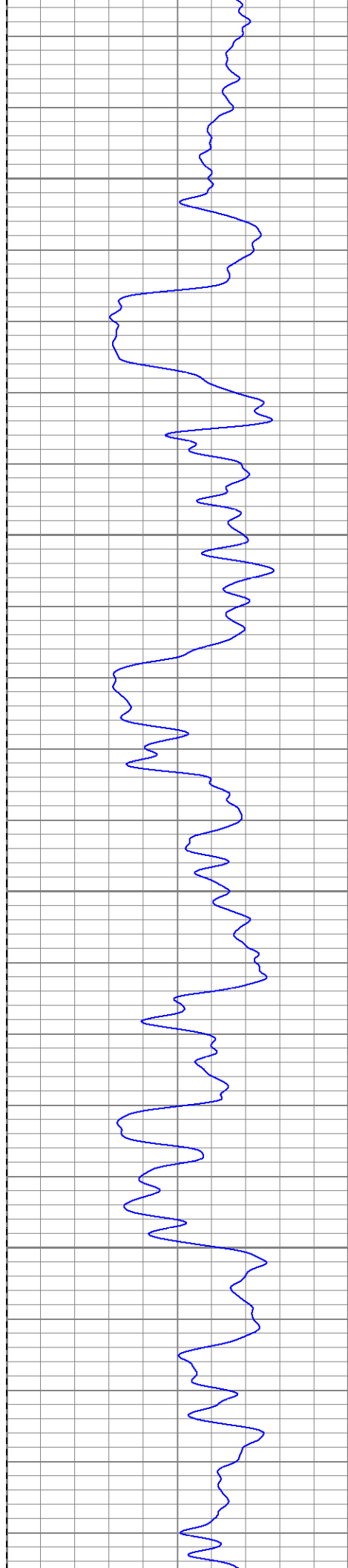
300

350

400





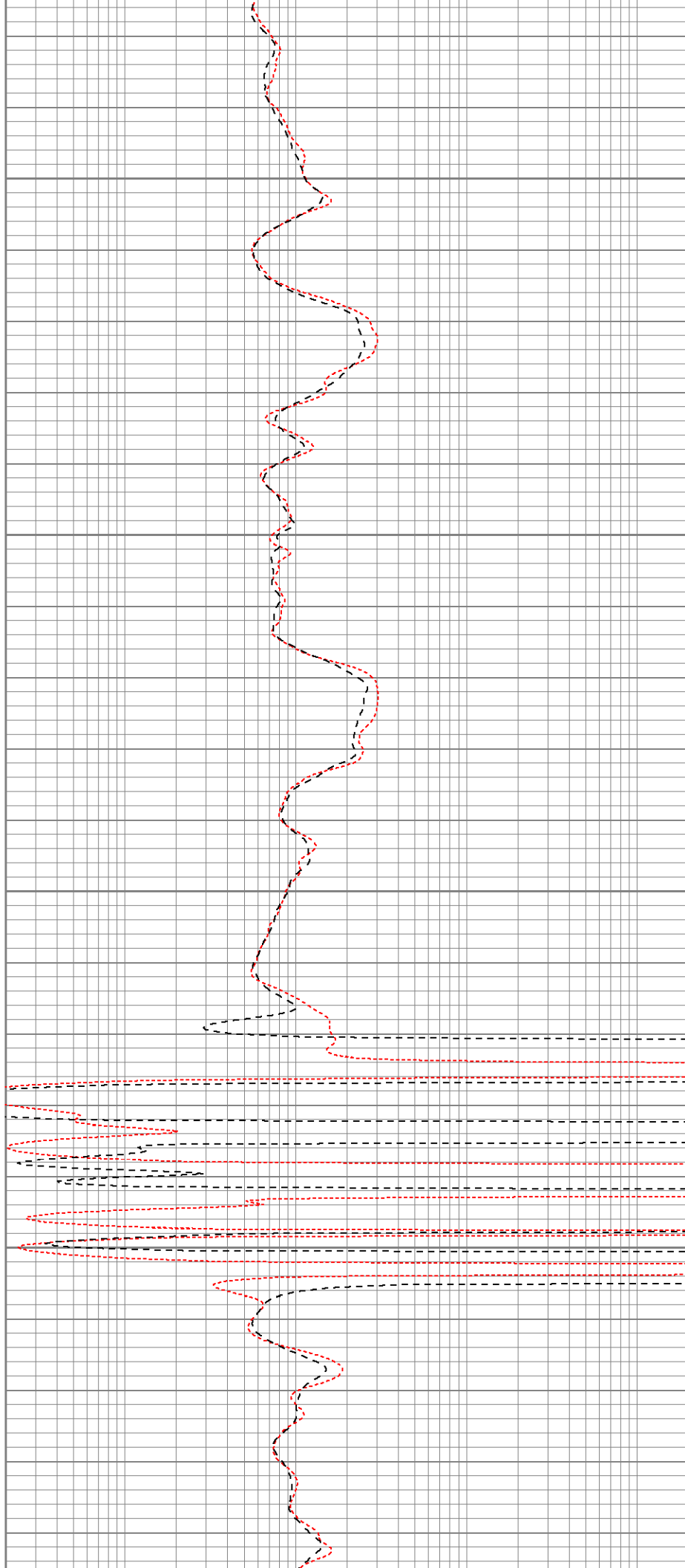


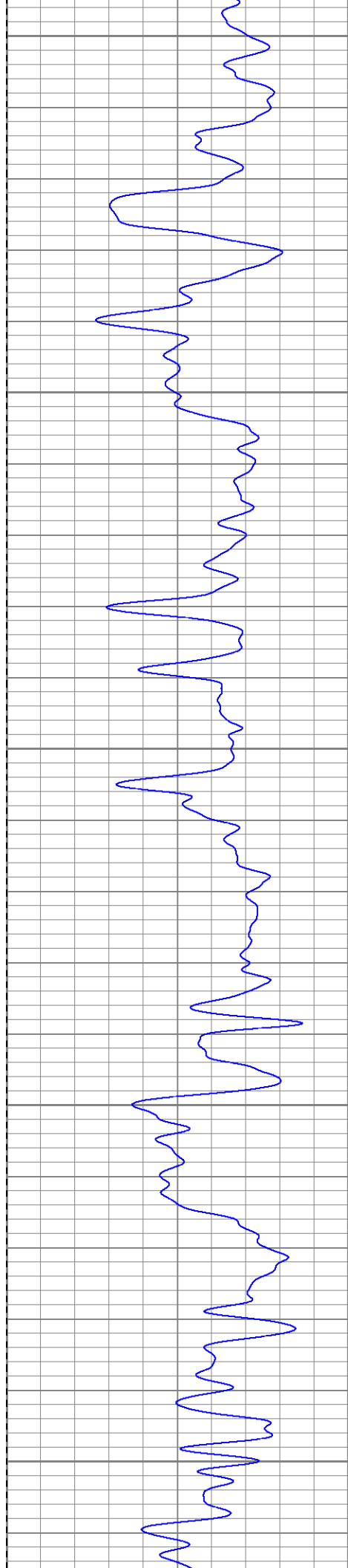
900

950

1000

1050





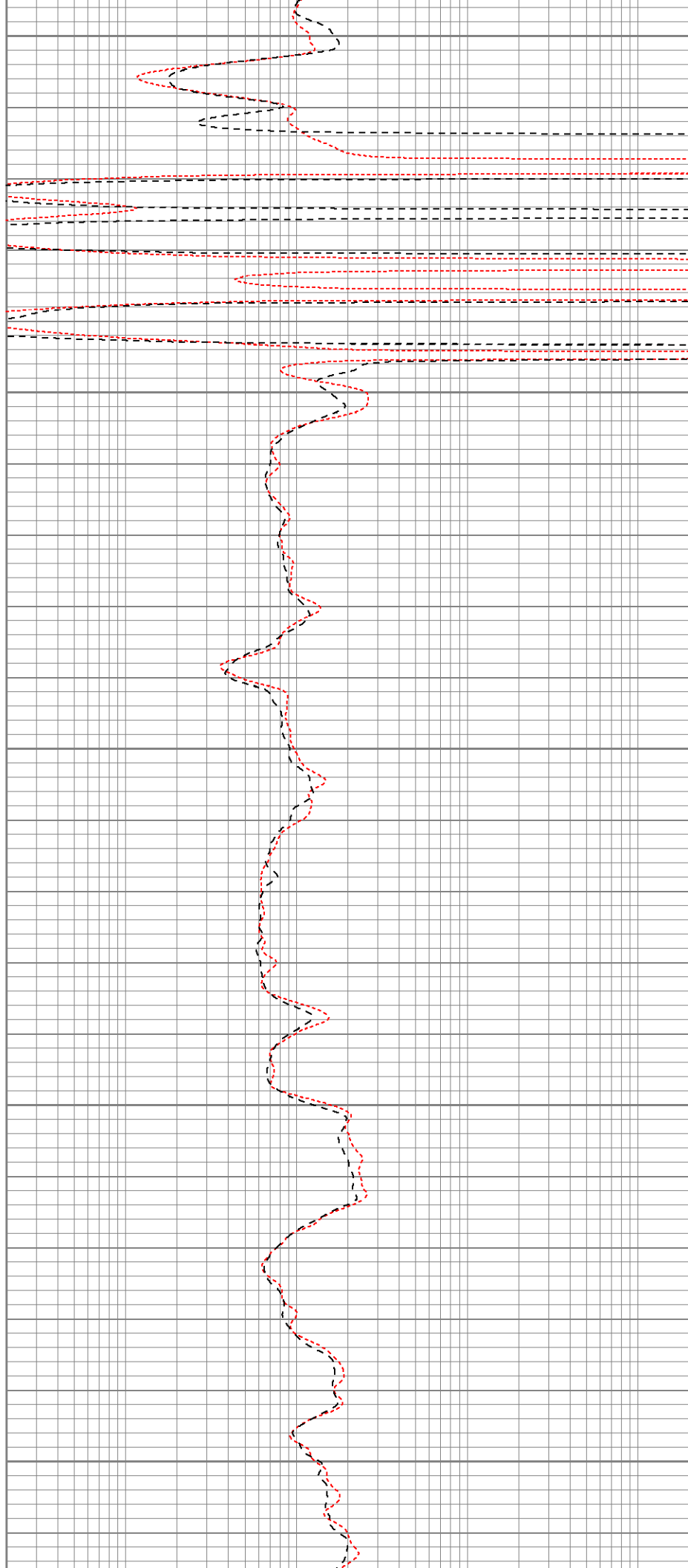
1100

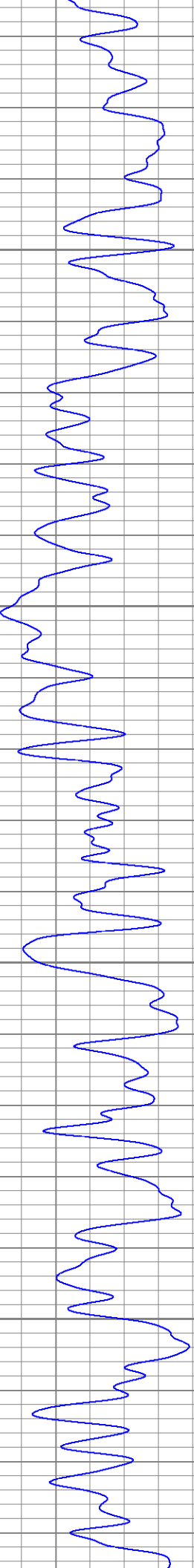
1150

1200

1250

1300



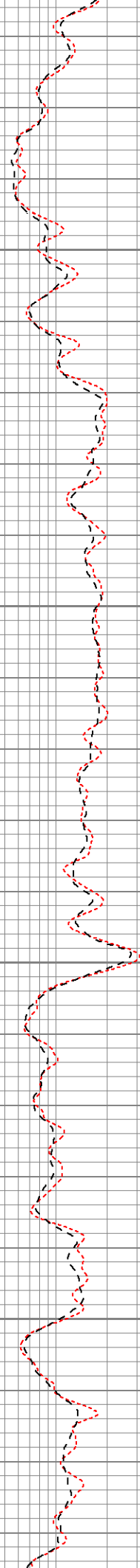


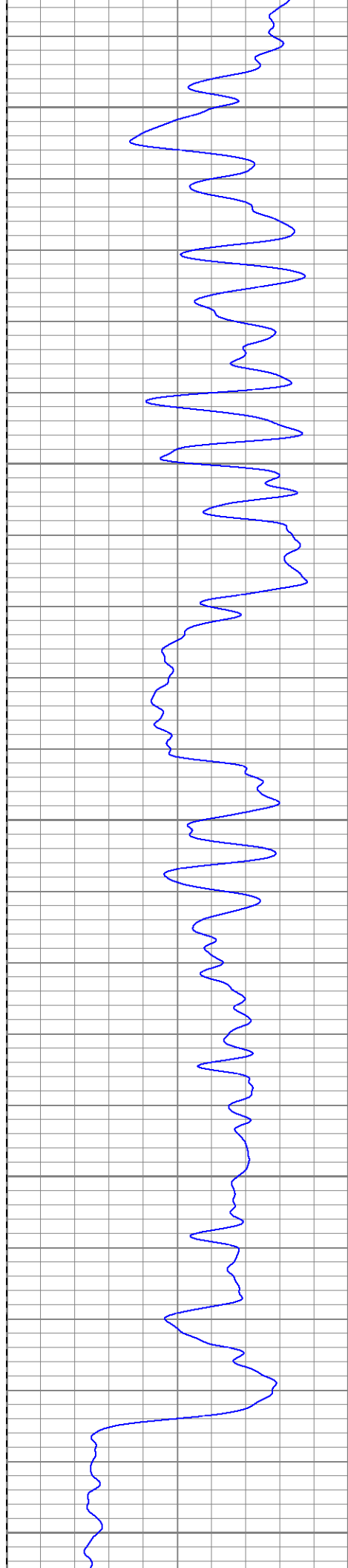
1350

1400

1450

1500





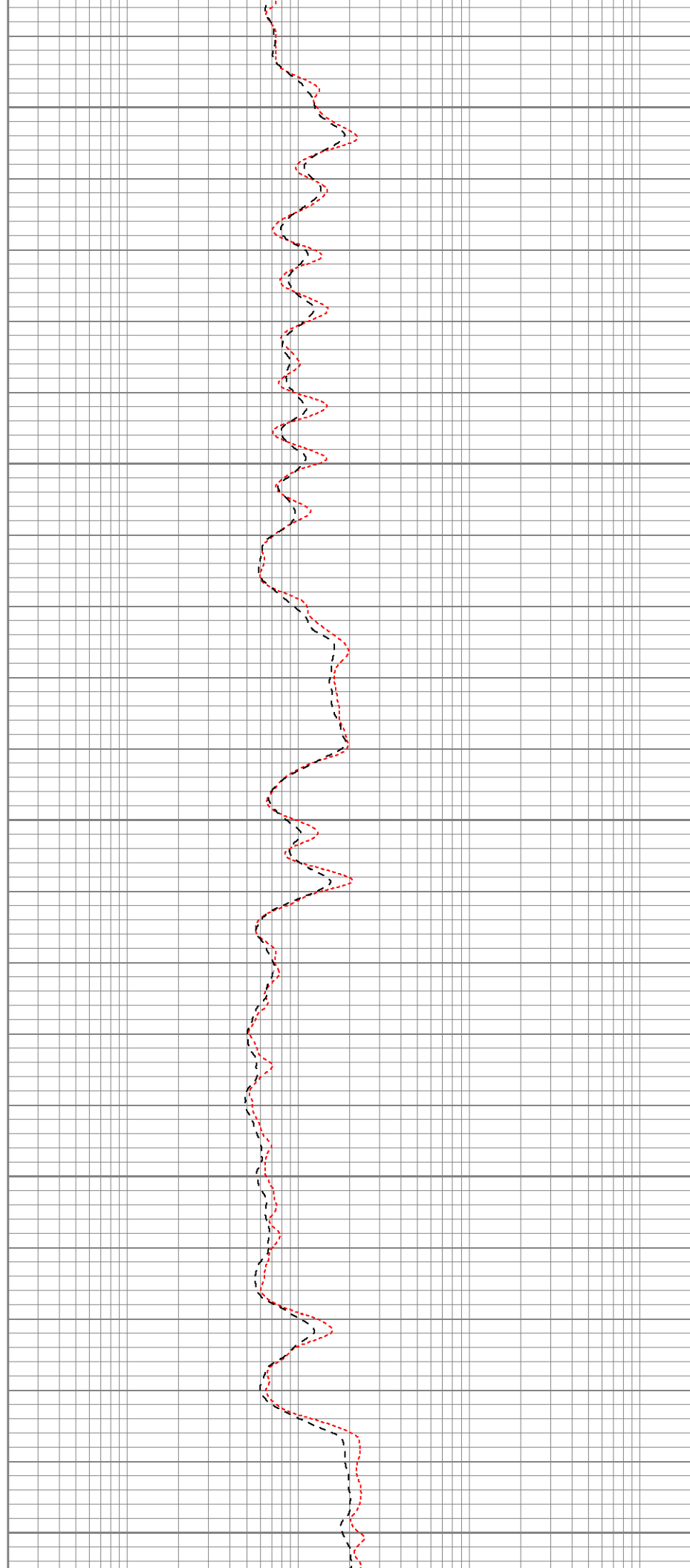
1550

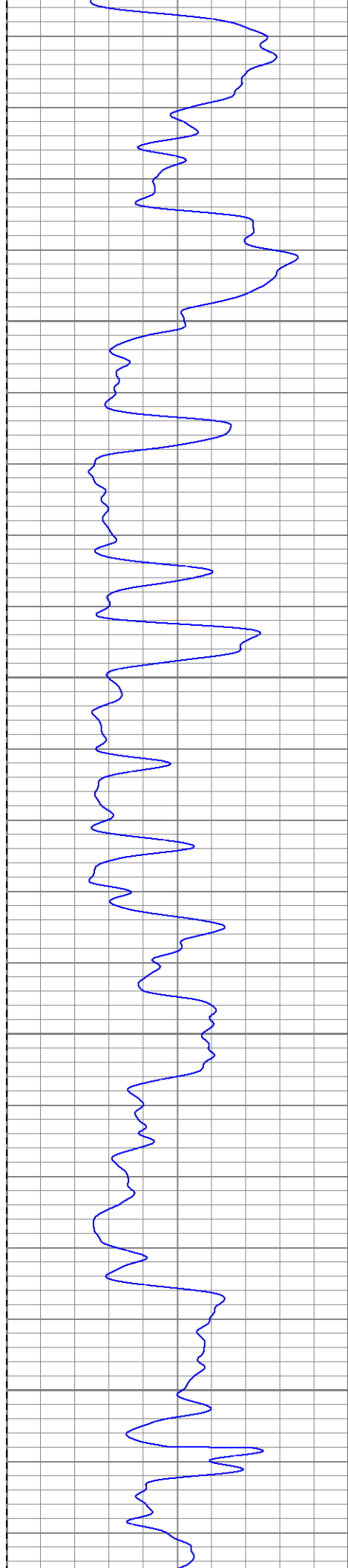
1600

1650

1700

1750



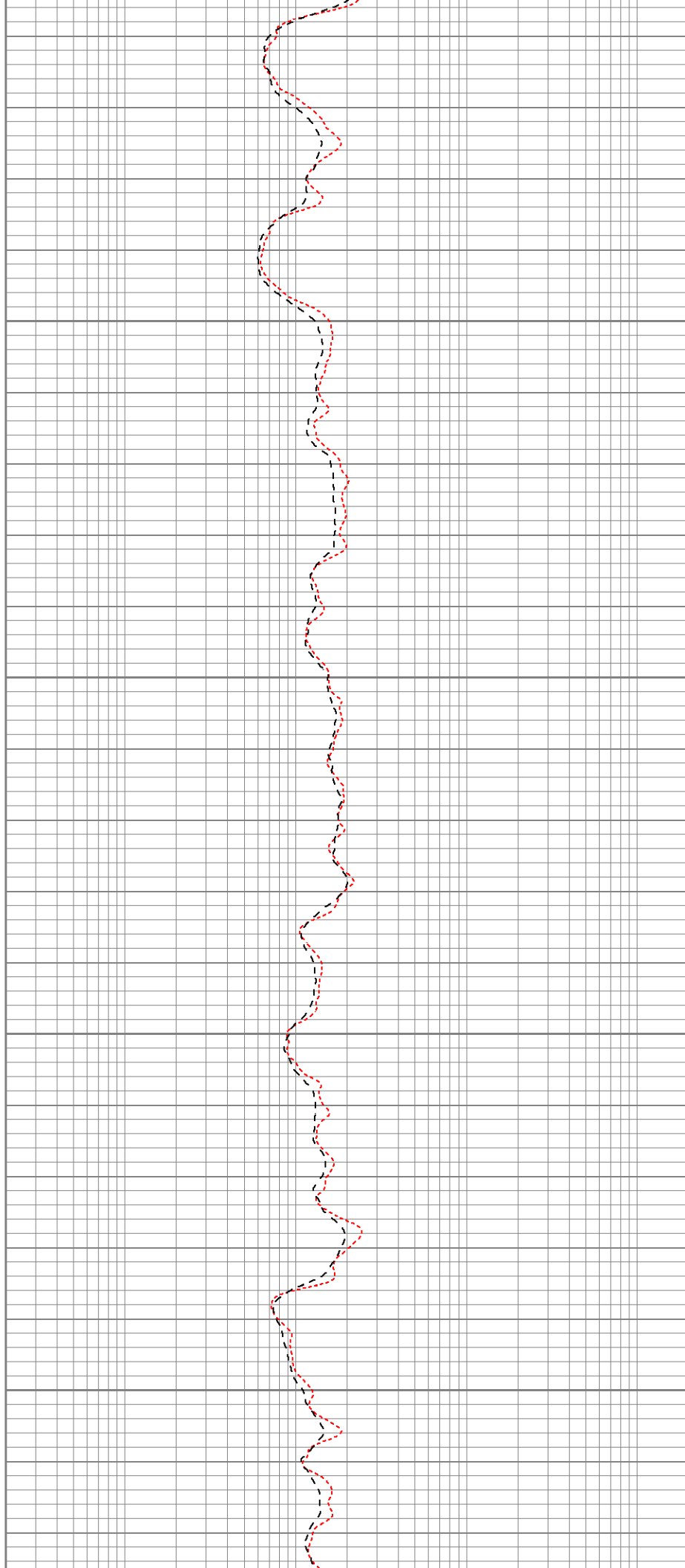


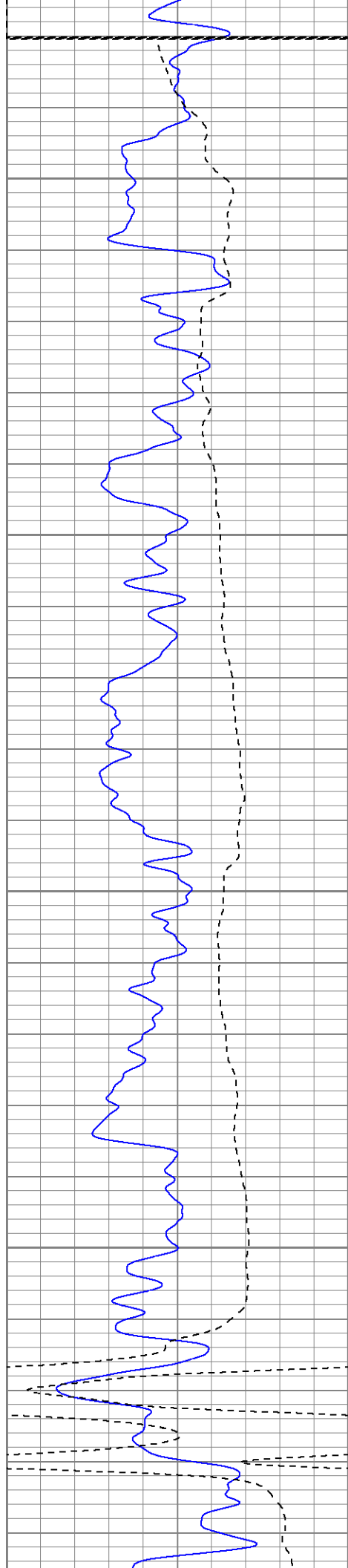
1800

1850

1900

1950





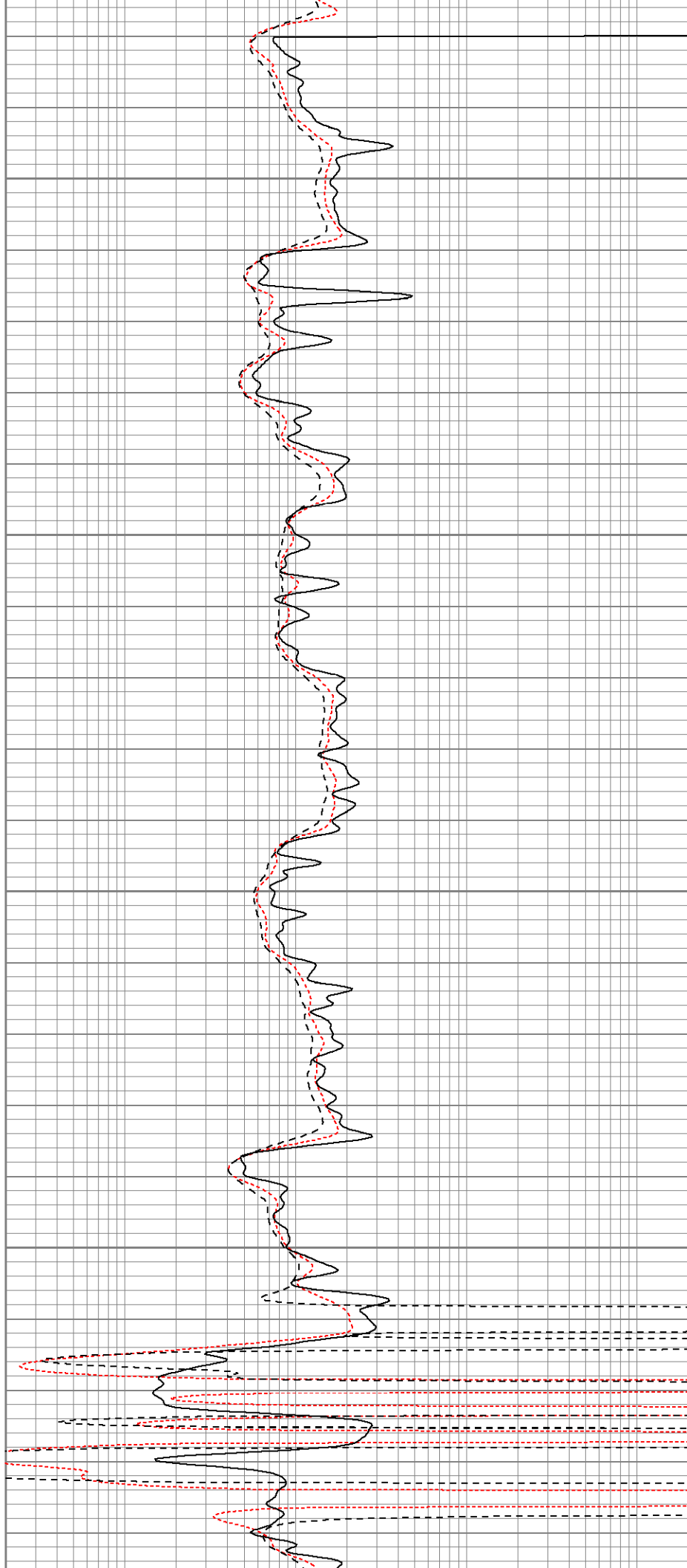
Fluid Level

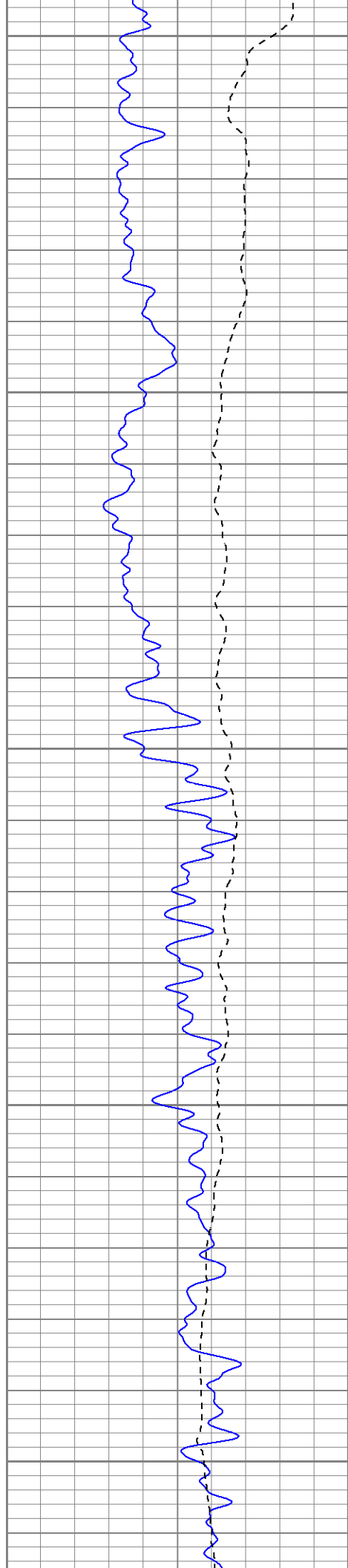
2000

2050

2100

2150





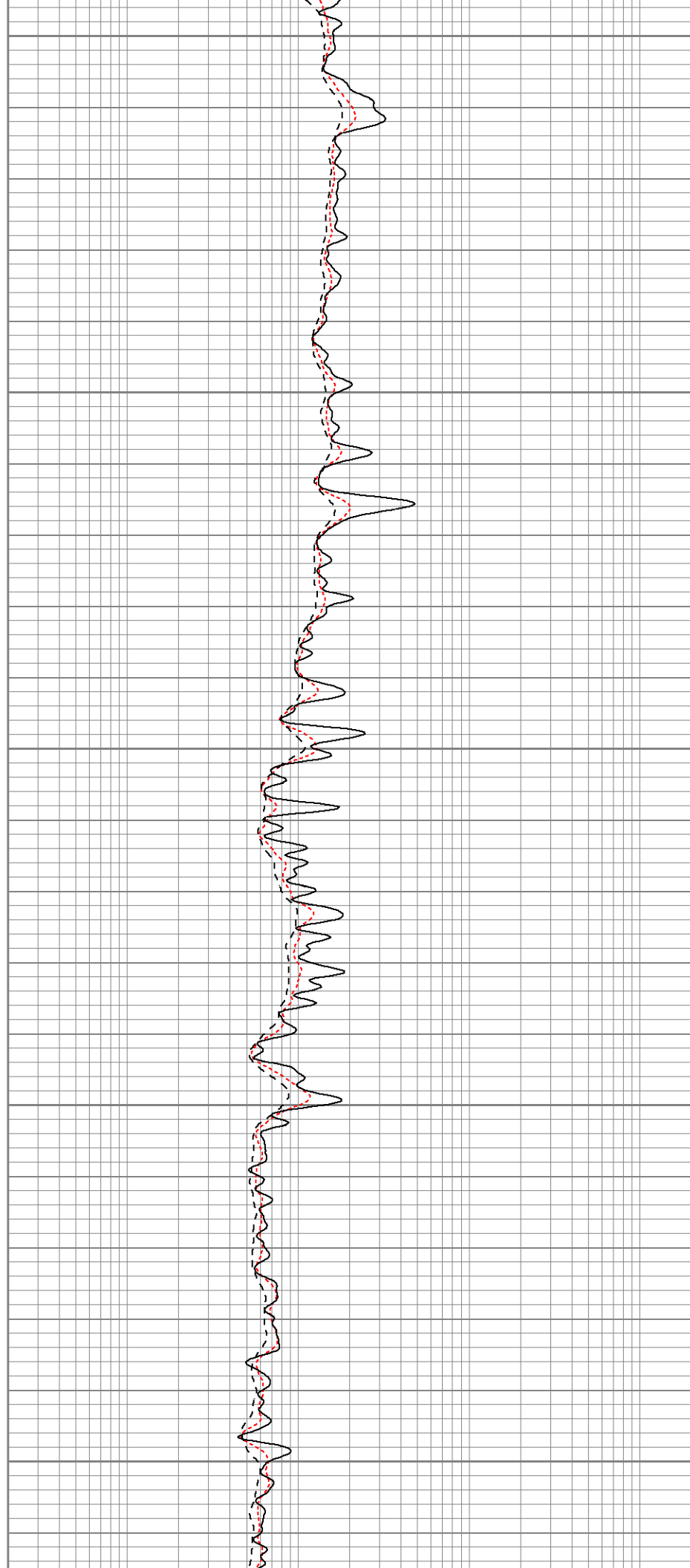
2200

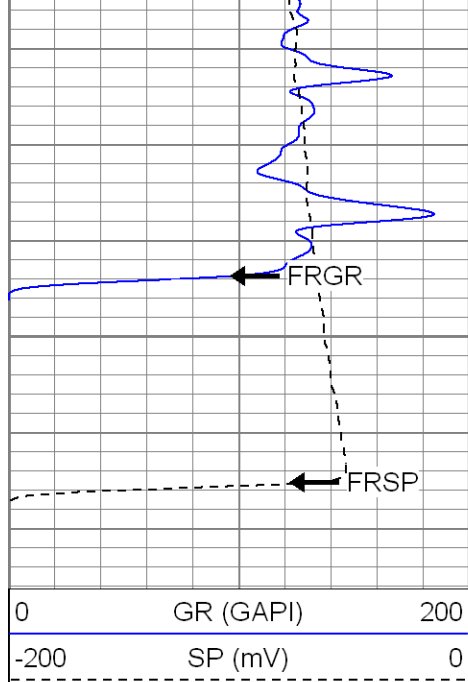
2250

2300

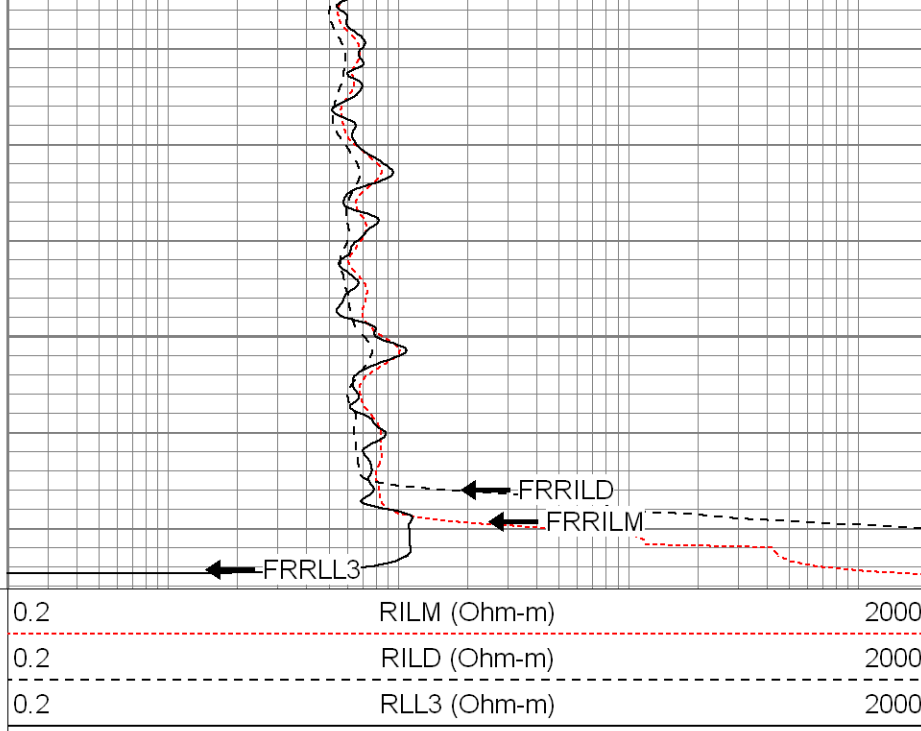
2350

2400





2450



SUPERIOR

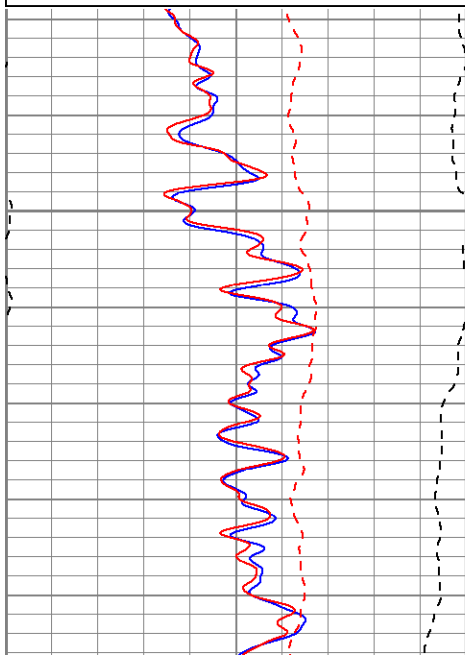
Black Lick, Pa.
Mercer, Pa.
Wooster, Oh.
Cleveland, Ok.
Trinidad, Co.

Repeat Pass

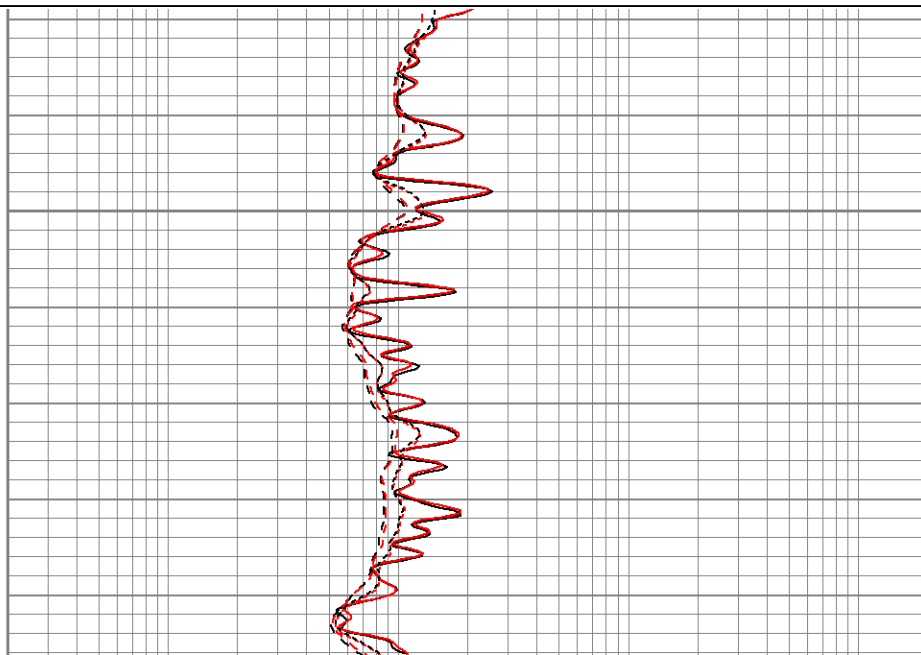
Database File: xtohr3606.db
Dataset Pathname: pass1.1
Presentation Format: dil
Dataset Creation: Thu May 01 15:01:46 2008 by Calc Open-Cased 070814
Charted by: Depth in Feet scaled 1:240

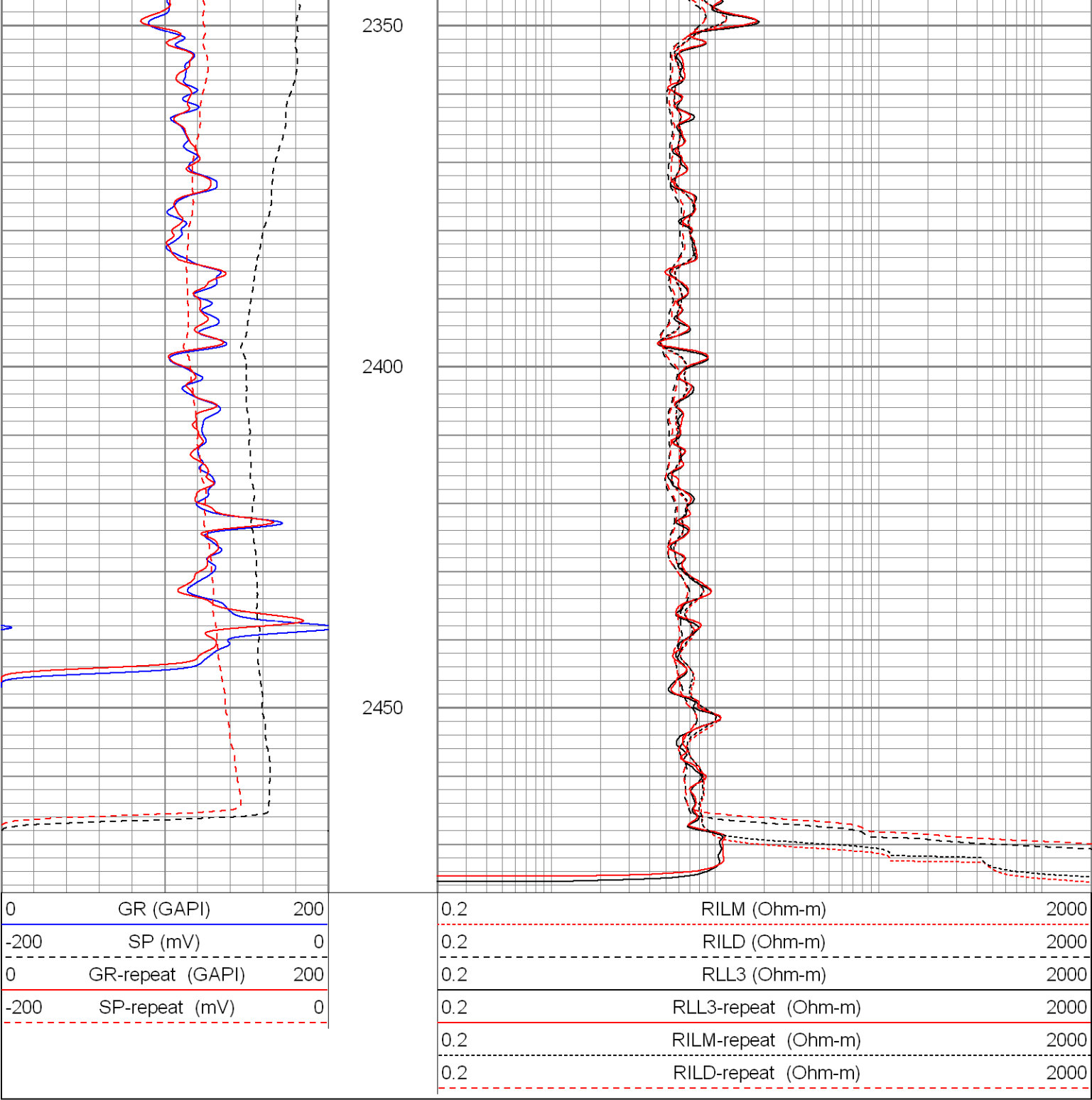
0	GR (GAPI)	200
-200	SP (mV)	0
0	GR-repeat (GAPI)	200
-200	SP-repeat (mV)	0

0.2	RILM (Ohm-m)	2000
0.2	RILD (Ohm-m)	2000
0.2	RLL3 (Ohm-m)	2000
0.2	RLL3-repeat (Ohm-m)	2000
0.2	RILM-repeat (Ohm-m)	2000
0.2	RILD-repeat (Ohm-m)	2000



2300





Calibration Report						
Database File:		xtohr3606.db				
Dataset Pathname:		pass1				
Dataset Creation:		Thu May 01 14:35:51 2008 by Log Open-Cased 070814				
Dual Induction Calibration Report						
Serial-Model:		5375-G				
Surface Cal Performed:		Thu May 01 13:51:22 2008				
Downhole Cal Performed:		Thu May 01 13:52:23 2008				
Surface Calibration						
Readings			References		Results	
Loop:	Air	Loop	Air	Loop	m	b

Deep	-0.000	0.619	V	0.000	500.000	mmho-m	807.189	0.335
Medium	0.003	0.743	V	0.000	550.000	mmho-m	743.658	-2.260
Internal:	Zero	Cal		Zero	Cal		m	b
Deep	0.000	0.619	V	0.000	500.000	mmho-m	807.722	-0.197
Medium	0.004	0.742	V	0.000	550.000	mmho-m	744.857	-2.782

Downhole Calibration								
	Readings			References			Results	
Internal:	Zero	Cal		Zero	Cal		m	b
Deep	0.276	500.616	mmho-m	0.532	500.202	mmho-m	0.999	0.257
Medium	0.254	550.254	mmho-m	0.517	549.632	mmho-m	0.998	0.264
Shallow	2.504	0.008	V	500.000	2.000	Ohm-m	124.000	-3.000

Temperature Calibration Report					
Serial Number:		2542T			
Tool Model:		CDLP			
Performed:		Wed Apr 09 15:14:20 2008			
		Reference		Reading	
Low Reference:		55.00	degF	3.11	V
High Reference:		160.00	degF	5.35	V
Gain:		46.88			
Offset:		-90.78			
Delta Spacing		1			

Compensated Density Calibration Report								
	Serial-Model:	2542-T2						
	Source / Verifier:	/						
	Master Calibration Performed:	Fri Apr 04 08:43:29 2008						

Master Calibration					
	Density		Far Detector	Near Detector	
Magnesium	1.710	g/cc	725.64	339.44	cps
Aluminum	2.590	g/cc	162.65	232.88	cps
Spine Angle = 75.86			Density/Spine Ratio = 0.571		
	Size		Reading		
Small Ring	8.00	in	1.33	V	
Large Ring	14.00	in	2.67	V	

Gamma Ray Calibration Report								
	Serial Number:	2001						
	Tool Model:	OH						
	Performed:	Thu May 01 08:11:30 2008						
	Calibrator Value:	1.0	GAPI					
	Background Reading:	0.0	cps					
	Calibrator Reading:	1.0	cps					
	Sensitivity:	0.2500	GAPI/cps					

Neutron Calibration Report

Serial Number: 5108
Tool Model: PROBE
Performed: Thu May 01 08:17:16 2008

Calibrator Value: 1 NAPI

Calibrator Reading: 1 cps

Sensitivity: 1 NAPI/cps

Sensor	Offset (ft)	Schematic	Description	Len (ft)	OD (in)	Wt (lb)
			None	0.75	1.50	5.00
NEU	37.47		NEU-PROBE (5108) Probe Epithermal	4.92	3.63	85.00
GR	31.94		GR-OH (2001) 2001	3.56	3.25	40.00
			CDL-T2 (2542) Gearhart	9.29	4.00	201.00
LSD	23.19					
DCAL	22.98					
SSD	22.73		TEMP-CDLP (2542T) Probe Density/Temp	0.01	1.00	1.00
TEMP	22.55					
CILD	10.60		DIL-G (5375) Gearhart	21.47	4.00	345.00
SP	10.60					
CILM	6.89					
RLL3	1.70					

Dataset:	xtohr3606.db: field/well/run1/pass1
Total Length:	40.00 ft
Total Weight:	677.00 lb
O.D.	4.00 in