

Patterson

DUAL
INDUCTION
LOG

Company XTO Energy Inc.		Company XTO Energy Inc.	
Well	Golden Eagle 22-05 X	Well	Golden Eagle 22-05 X
Field	Purgatoire River	Field	Purgatoire River
County	Las Animas	County	Las Animas
State	Colorado	State	Colorado
Location:		API # : 05 071 08731 00	
SEC 22 TWP 33S RGE 67W		CDL NEUTRON	
Permanent Datum	Ground Level	Elevation	7600'
Log Measured From	Ground Level		
Drilling Measured From	Ground Level		
Date	3-25-06		
Run Number	One		
Depth Driller	2355'		
Depth Logger	2352'		
Bottom Logged Interval	2350'		
Top Log Interval	Surface Casing		
Casing Driller	8 5/8" @ 855'		
Casing Logger	855'		
Bit Size	7 7/8"		
Type Fluid in Hole	Water		
Density / Viscosity	///		
pH / Fluid Loss	///		
Source of Sample	///		
Rm @ Meas. Temp	///		
Rmf @ Meas. Temp	///		
Rmc @ Meas. Temp	///		
Source of Rmf / Rmc	///		
Rm @ BHT	///		
Time Circulation Stopped	1:00 P.M.		
Time Logger on Bottom	4:30 P.M.		
Maximum Recorded Temperature	107 DEG F		
Equipment Number	T720		
Location	Trinidad		
Recorded By	M. Norton		
Witnessed By	Mr. Don Johnson		

<<< Fold Here >>>

All interpretations are opinions based on inferences from electrical or other measurements and we cannot and do not guarantee the accuracy or correctness of any interpretation, and we shall not, except in the case of gross or willful negligence on our part, be liable or responsible for any loss, costs, damages, or expenses incurred or sustained by anyone resulting from any interpretation made by any of our officers, agents or employees. These interpretations are also subject to our general terms and conditions set out in our current Price Schedule.

Comments

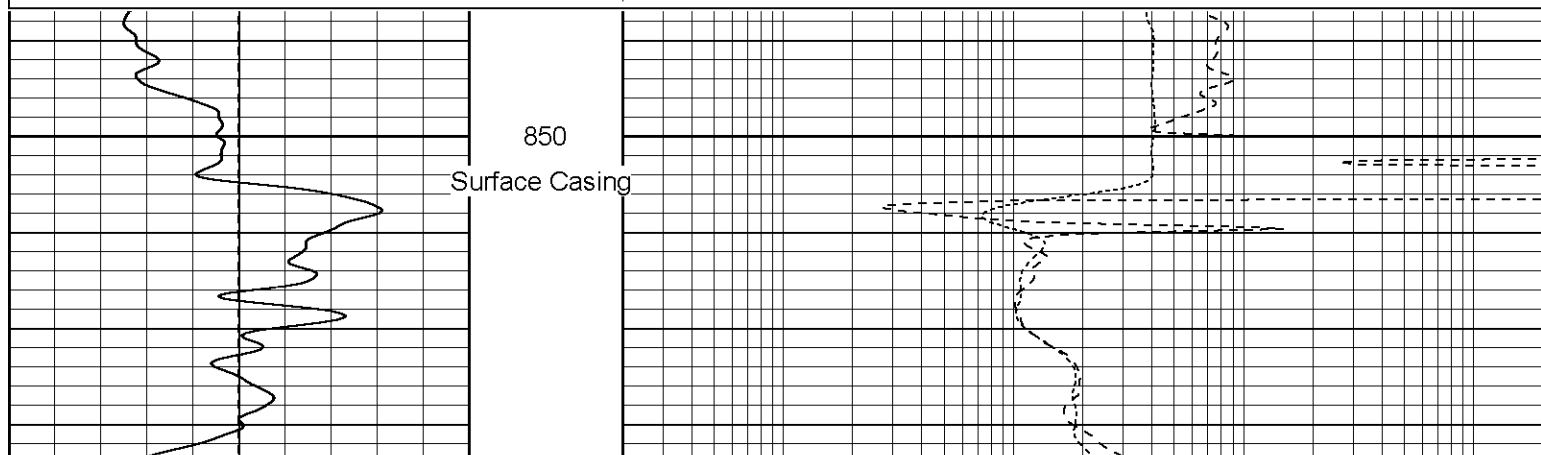
Well Directions:
Hwy 12 Two Miles Past Weston Turn Right(Lopez Canyon), Thru Gate,
At T Stay Right, At Y Stay Right, First Left To Location.

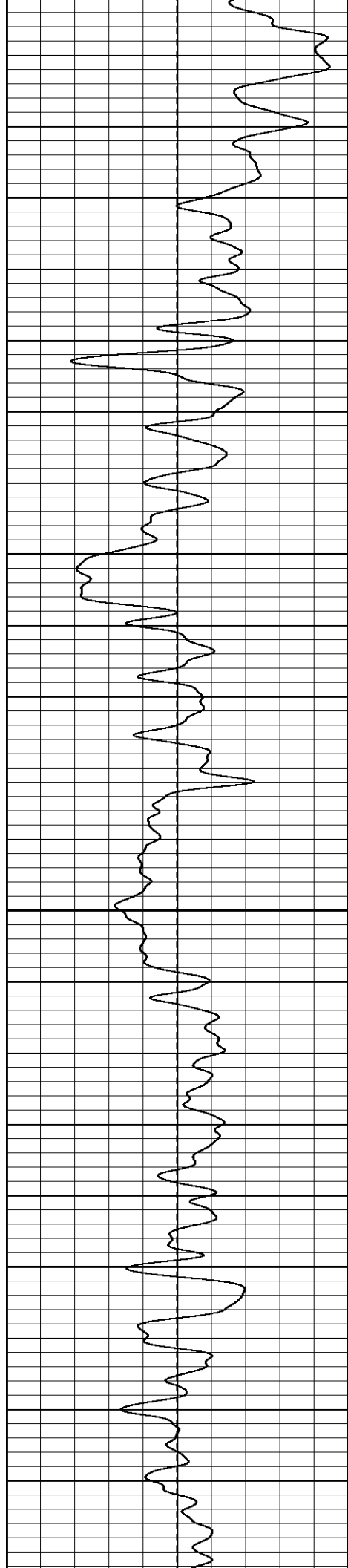
Patterson

Main Pass

Database File: xtoge2205x.db
Dataset Pathname: pass2.1
Presentation Format: dil
Dataset Creation: Sat Mar 25 18:46:23 2006 by Calc Warrior 7.0 STD Ope
Charted by: Depth in Feet scaled 1:240

0	GR (GAPI)	200	0.2	RILM (Ohm-m)	2000
-100	SP (mV)	100	0.2	RILD (Ohm-m)	2000
			0.2	RLL3 (Ohm-m)	2000



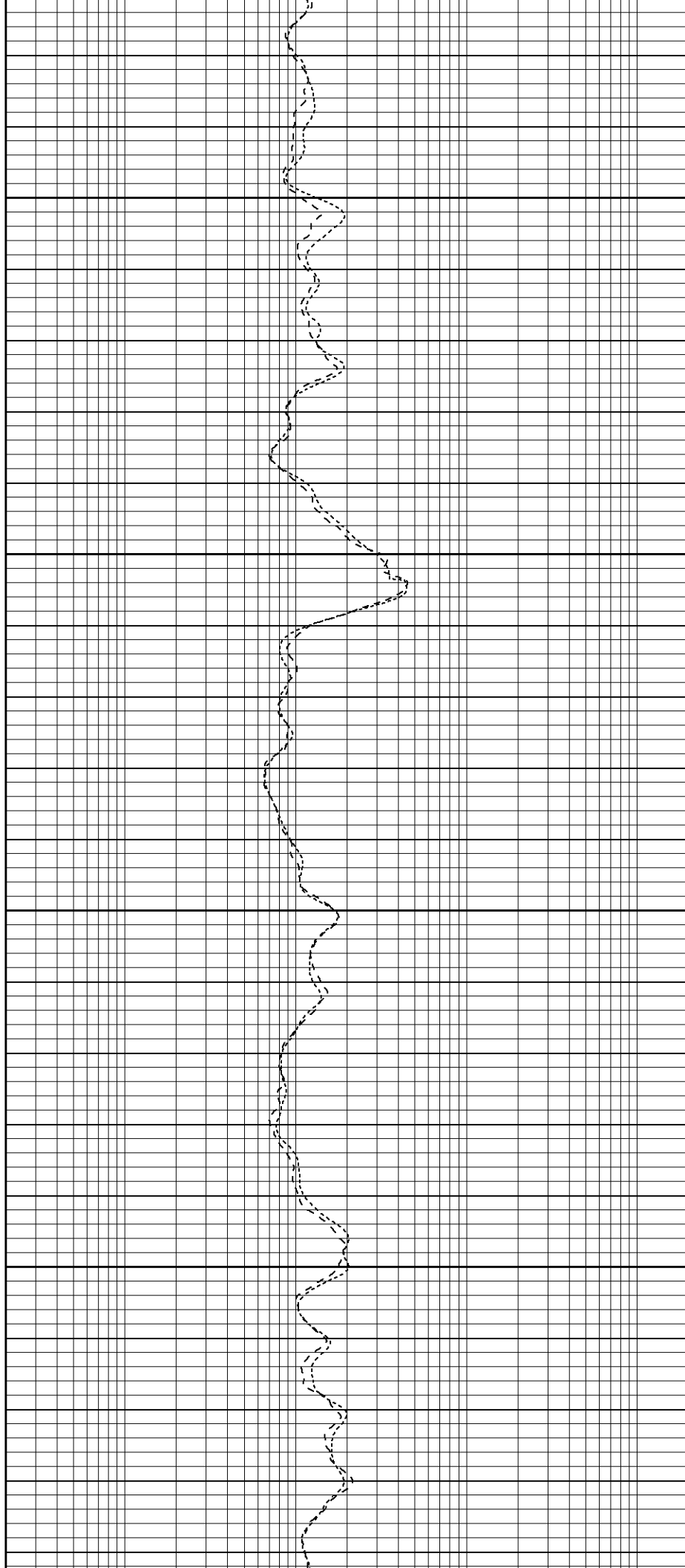


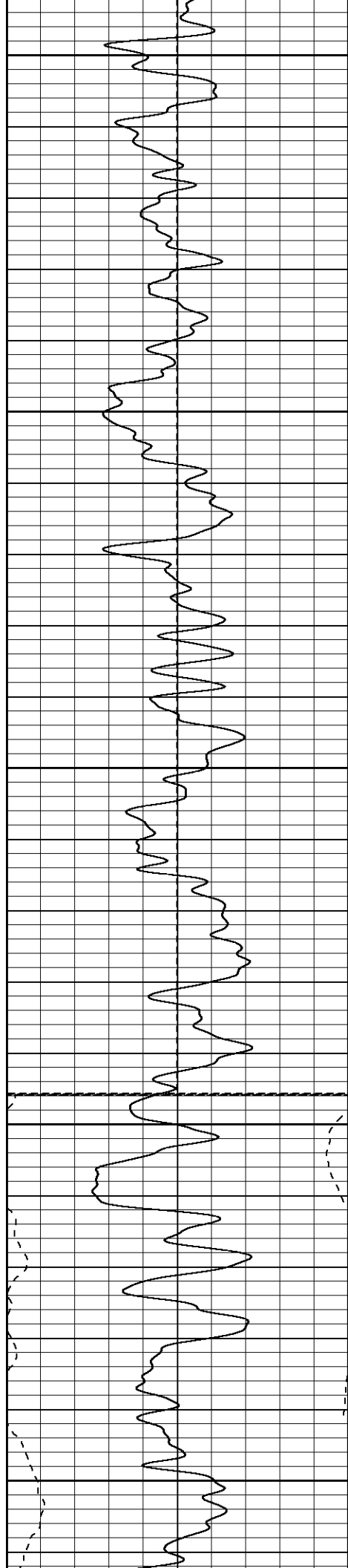
1050

1100

1150

1200





1250

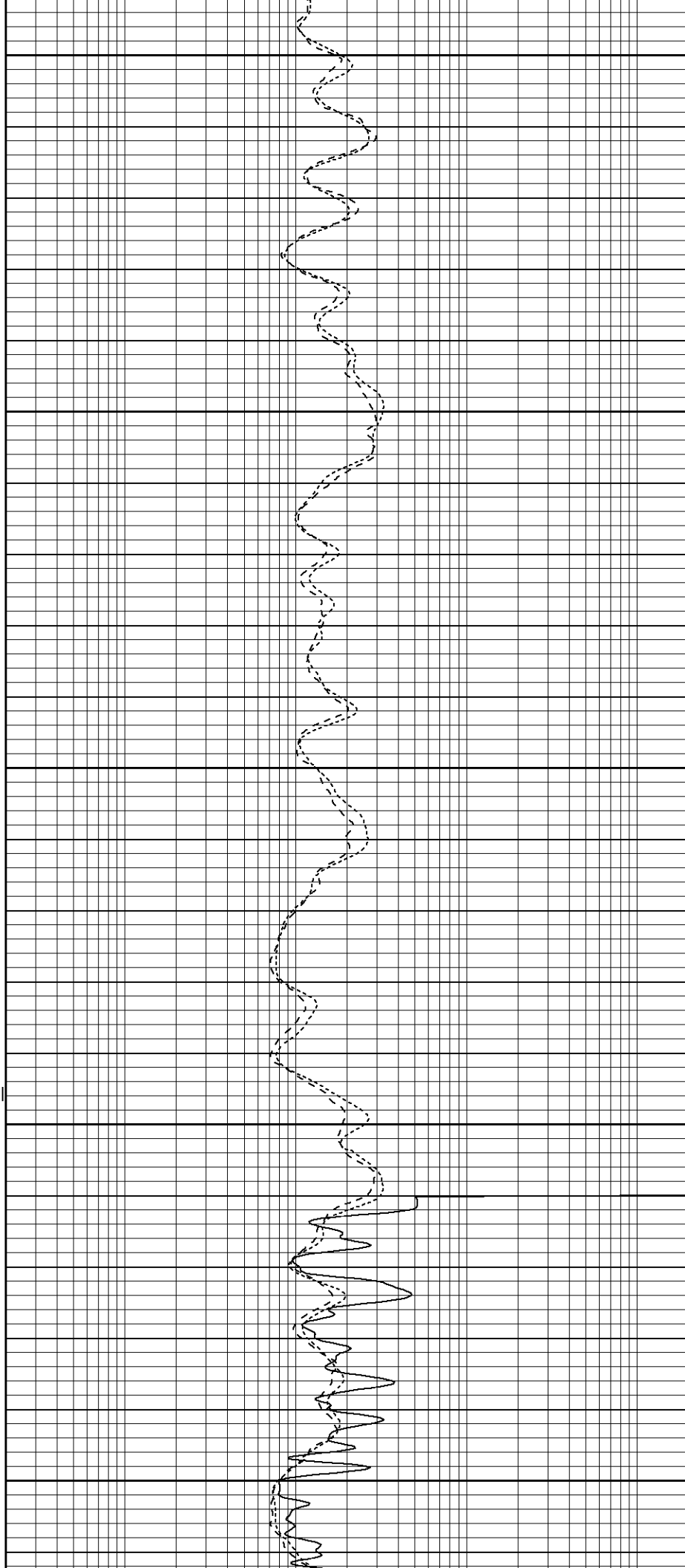
1300

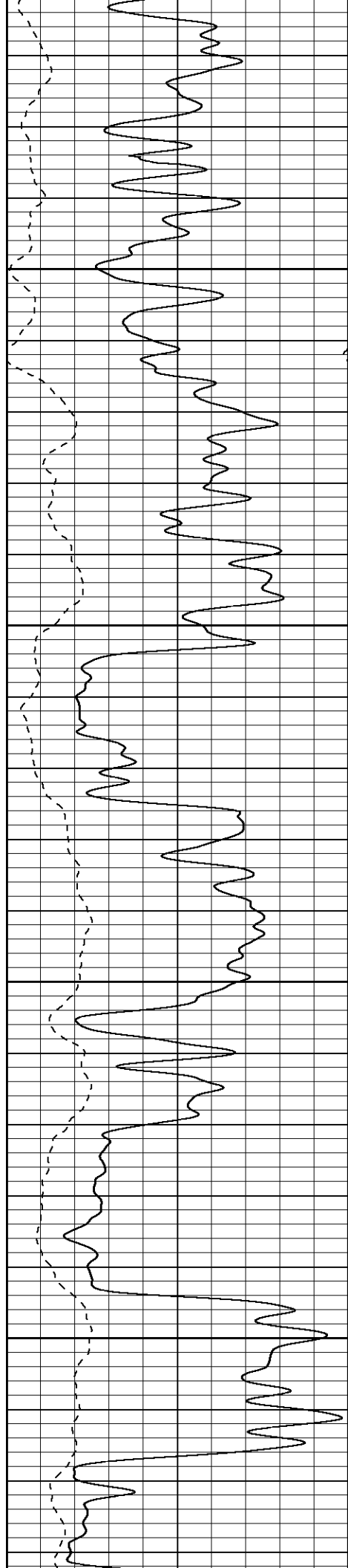
1350

Fluid Level

1400

1450



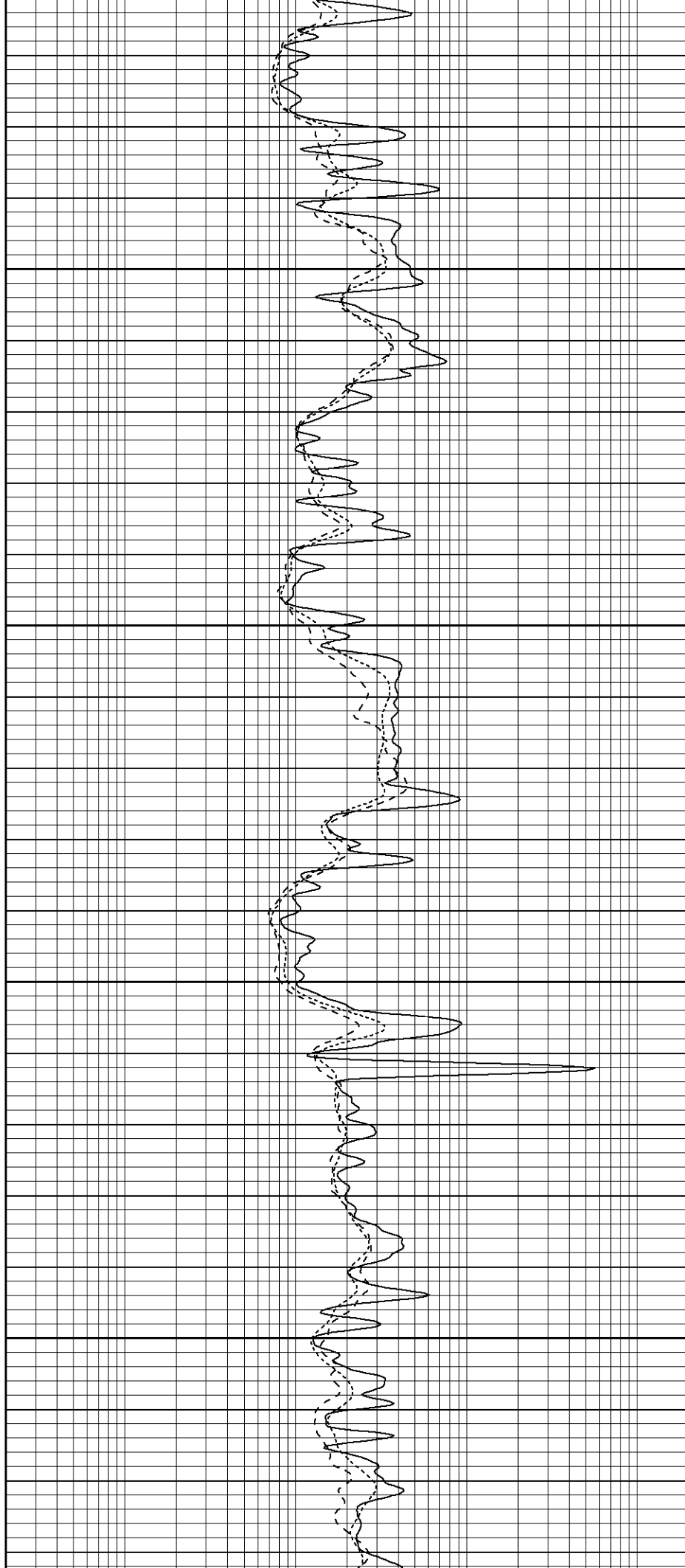


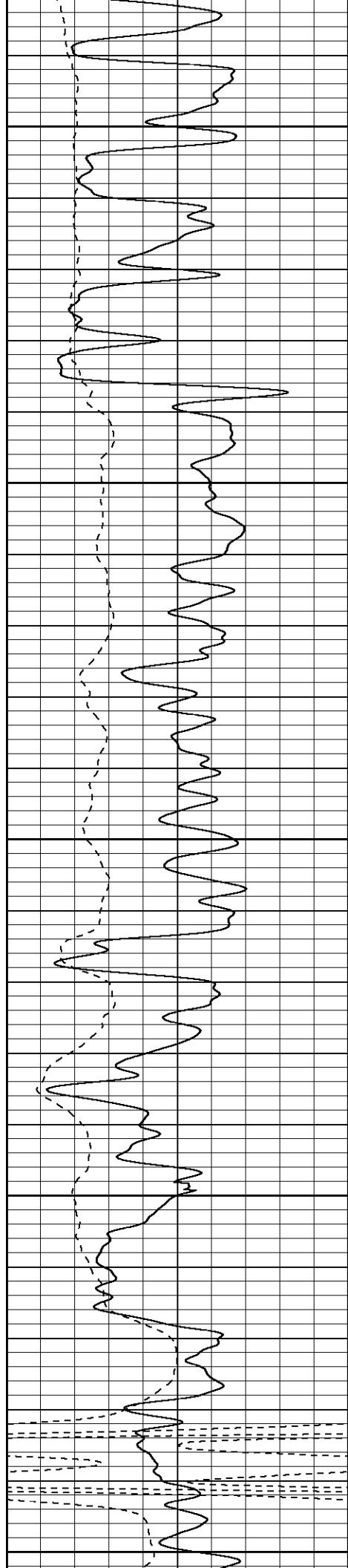
1500

1550

1600

1650





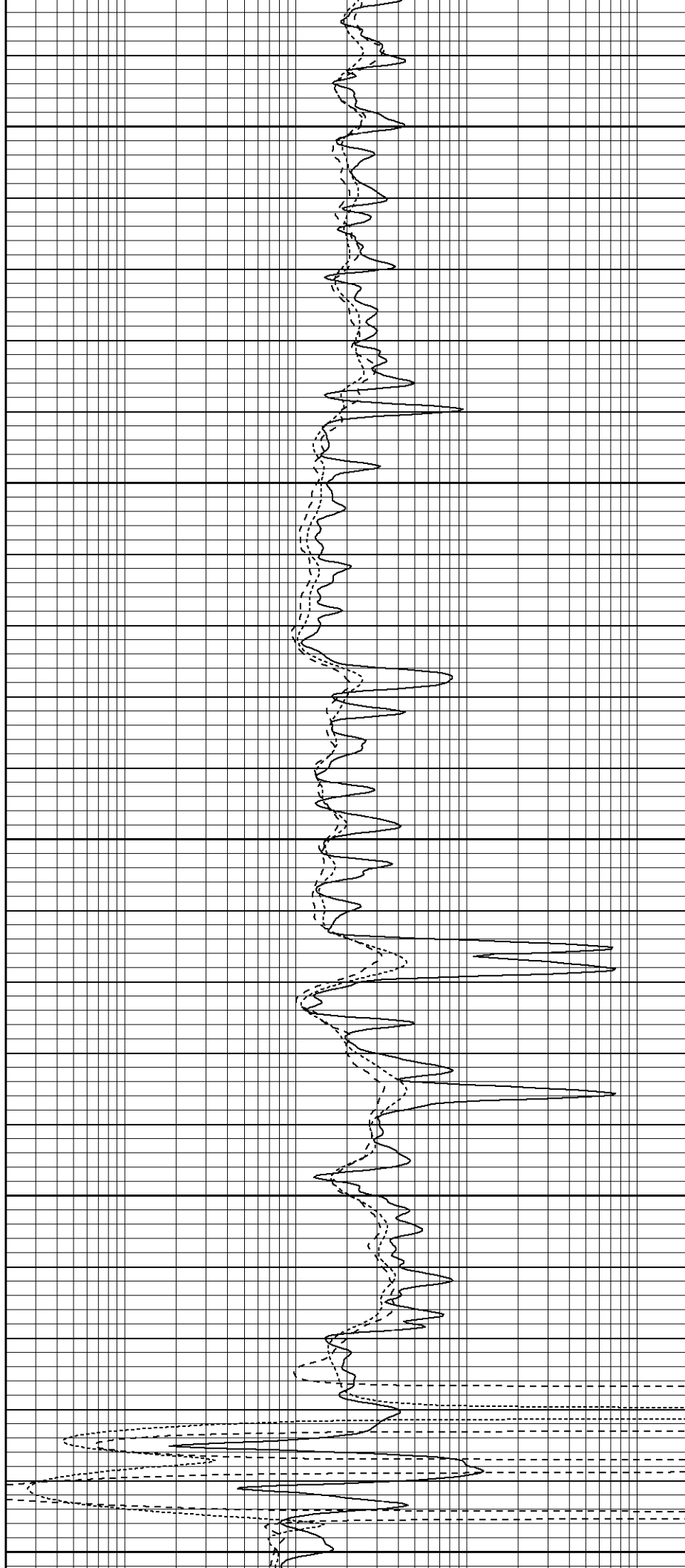
1700

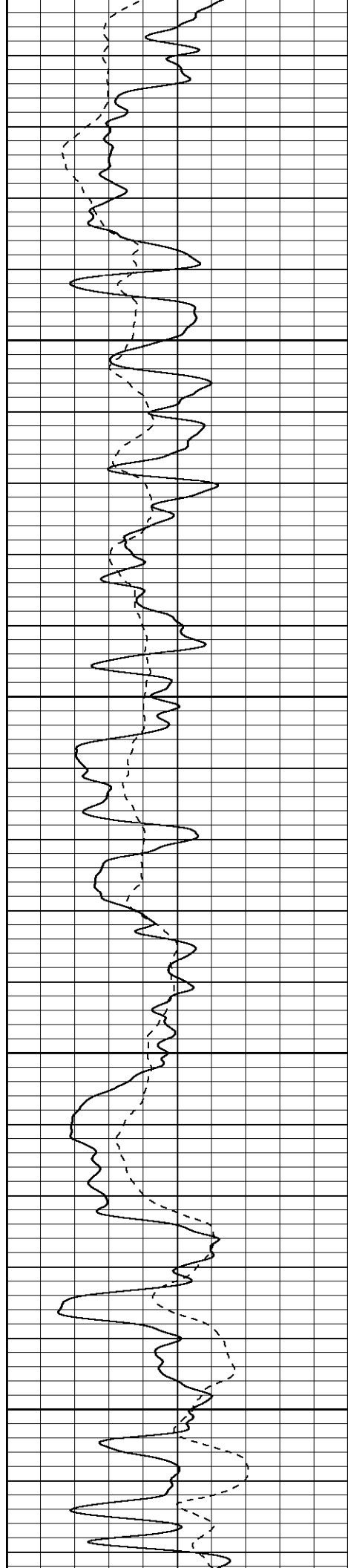
1750

1800

1850

1900



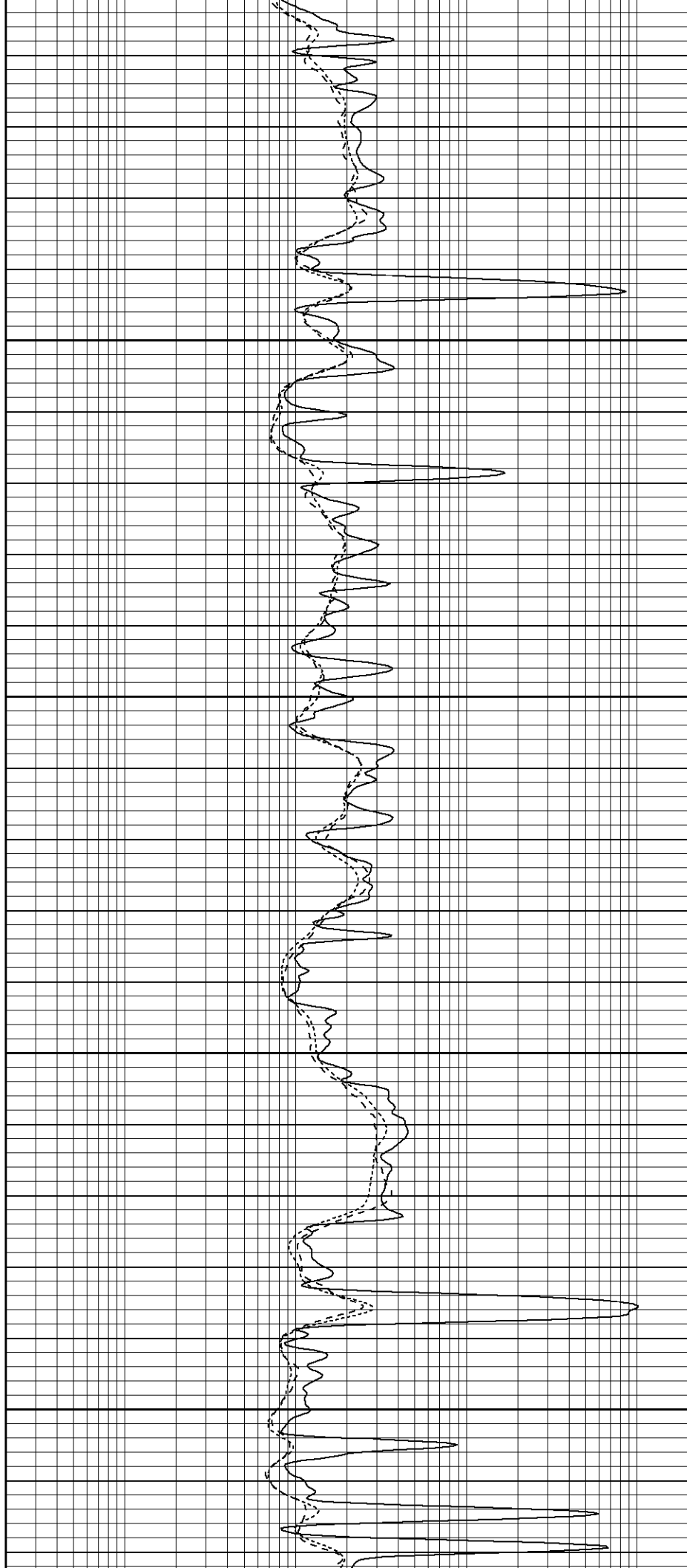


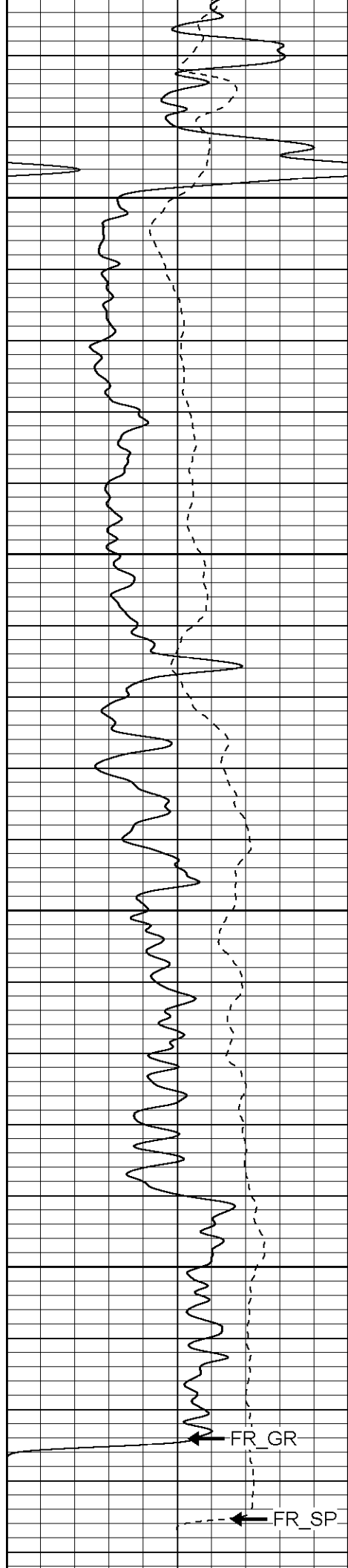
1950

2000

2050

2100





2150

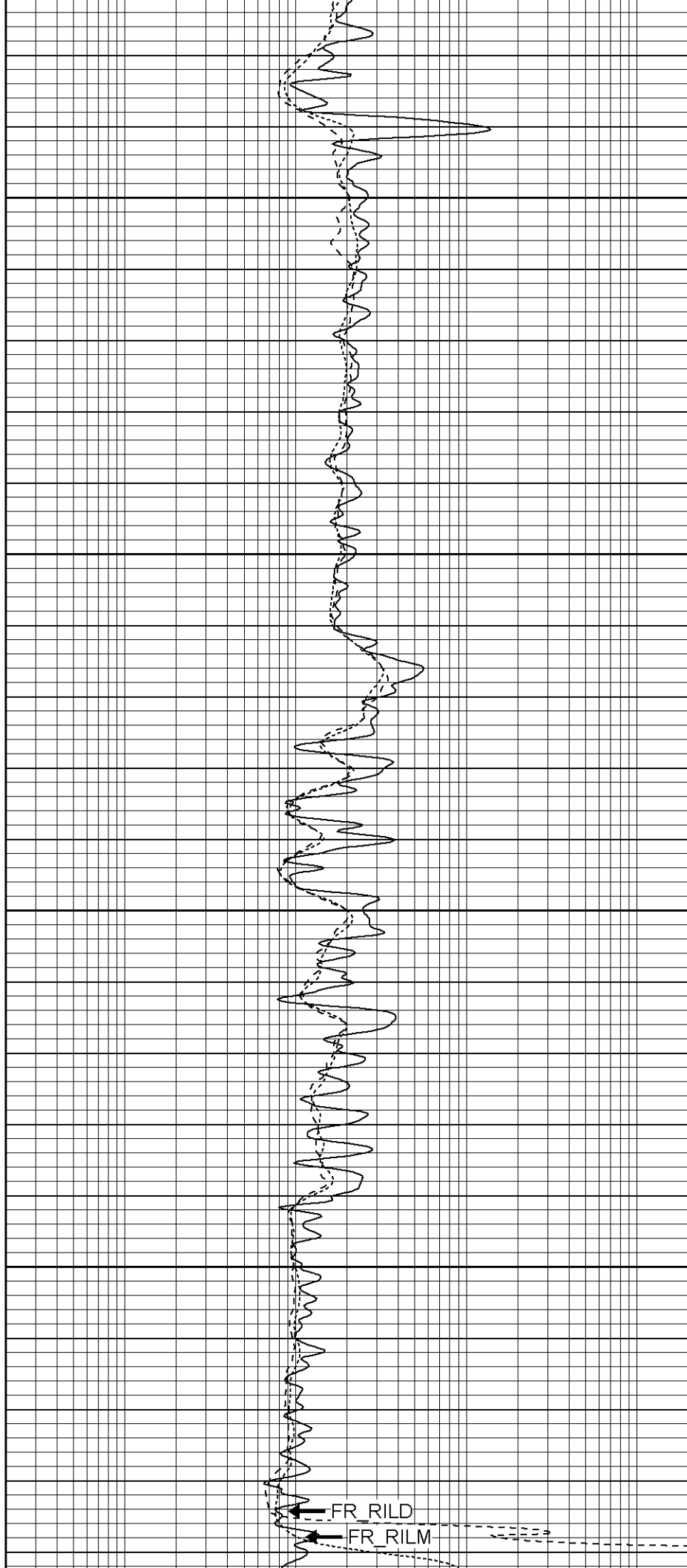
2200

2250

2300

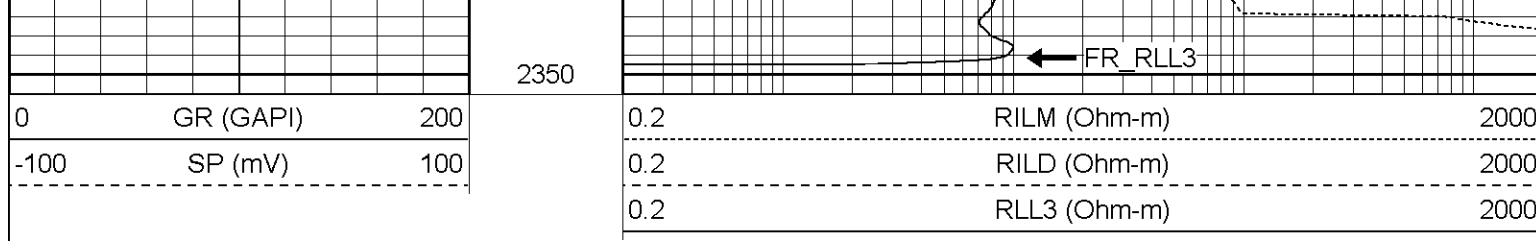
FR_GR

FR_SP



FR_RILD

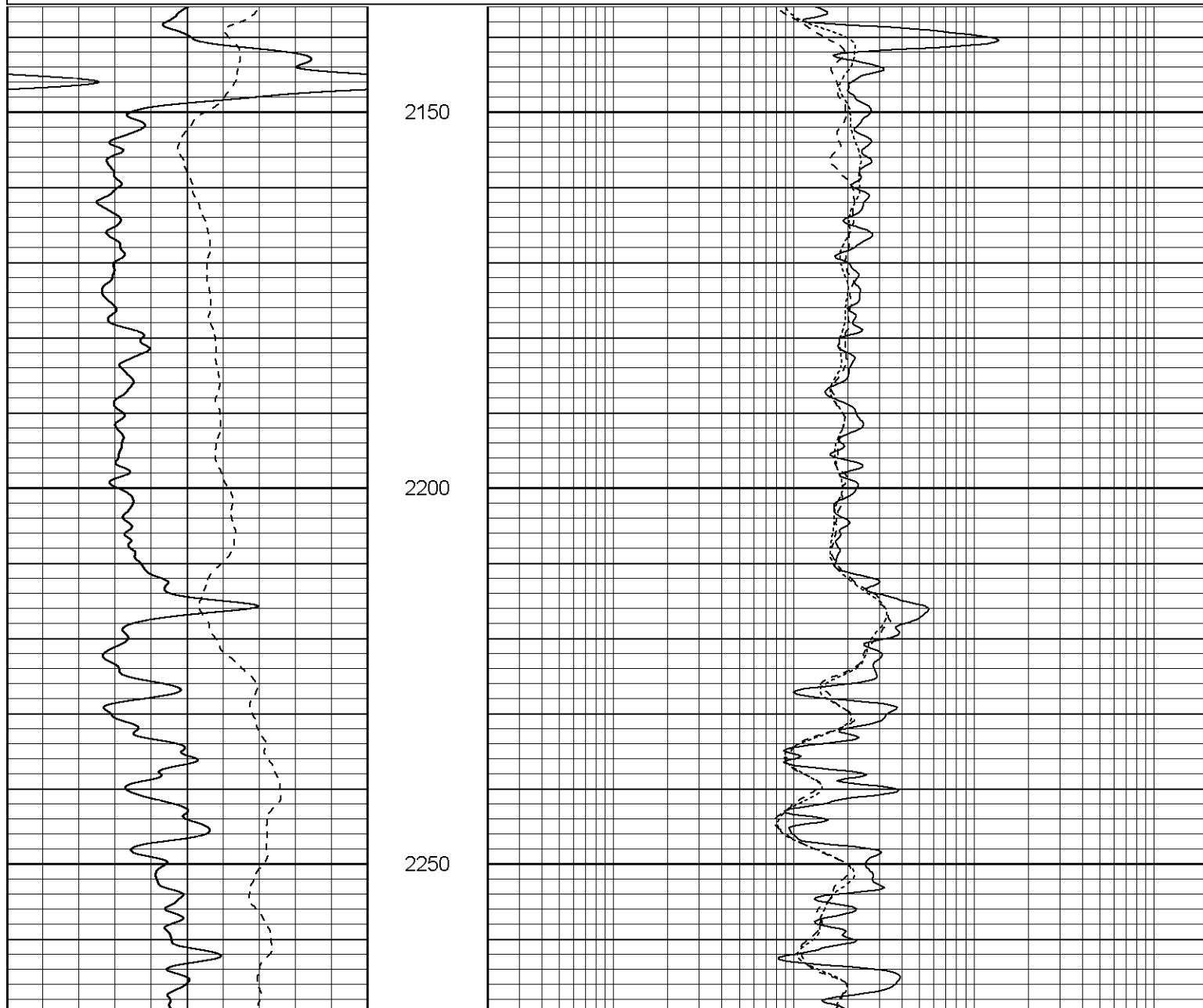
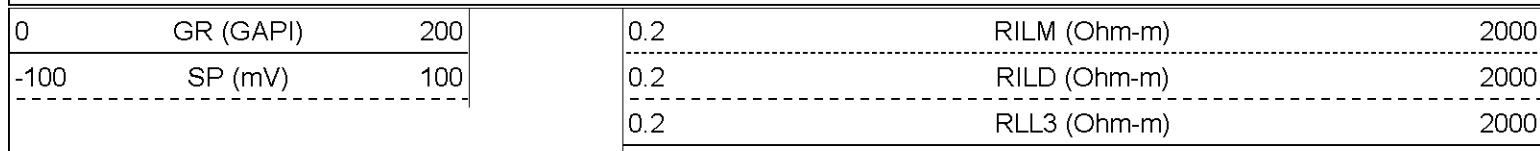
FR_RILM

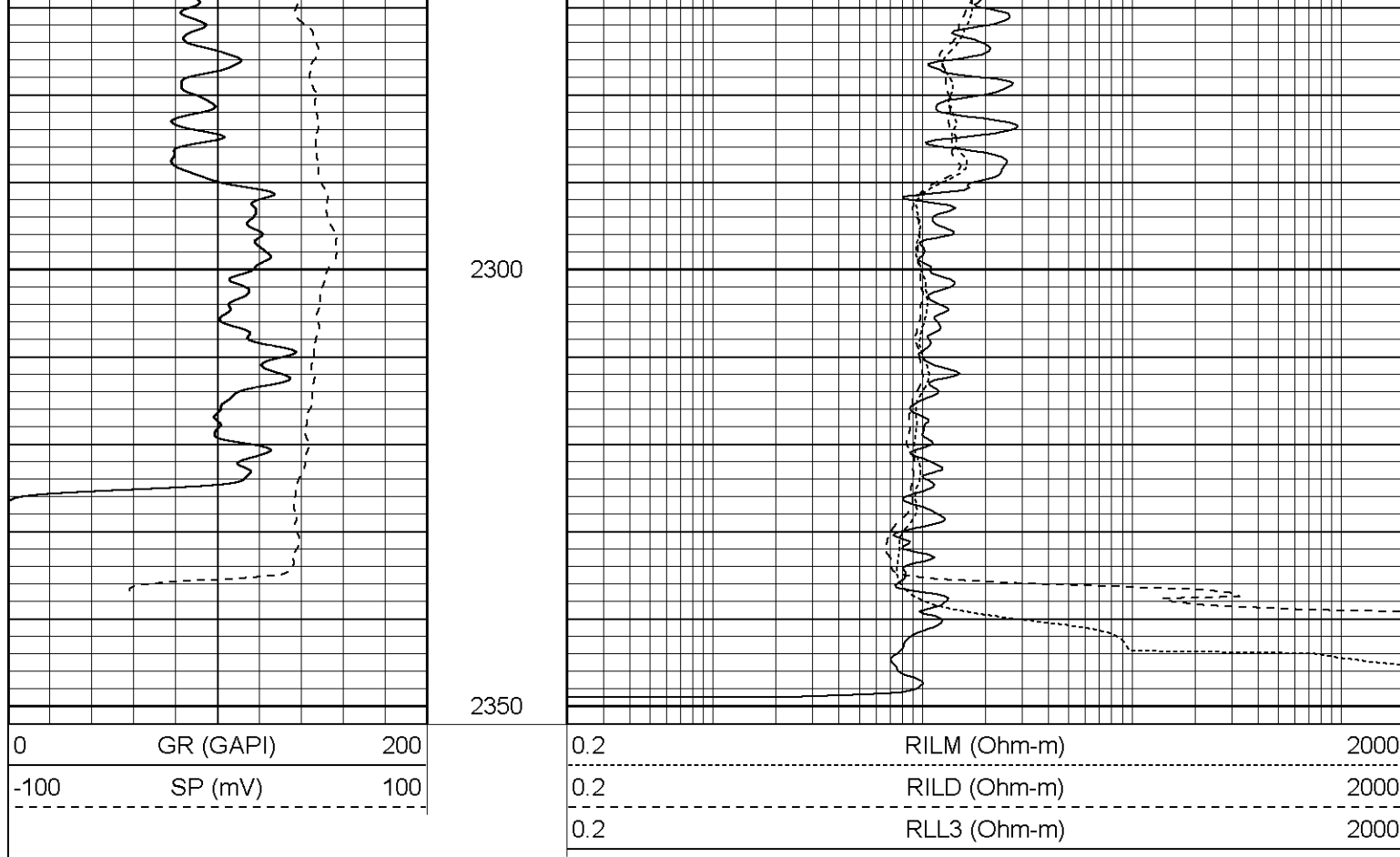


Patterson

Repeat Section

Database File: xtoge2205x.db
 Dataset Pathname: pass1.2
 Presentation Format: dil
 Dataset Creation: Mon Mar 27 09:06:54 2006 by Calc Warrior 7.0 STD Ope
 Charted by: Depth in Feet scaled 1:240





Dual Induction Calibration Report

Serial-Model: 20017-P
 Surface Cal Performed: Fri Mar 24 13:23:58 2006
 Downhole Cal Performed: Sat Mar 25 16:24:18 2006

Surface Calibration

Readings				References			Results	
Loop:	Air	Loop		Air	Loop		m	b
Deep	0.005	0.661	V	0.000	500.000	mmho-m	762.295	-3.950
Medium	0.006	0.780	V	0.000	650.000	mmho-m	840.577	-5.428
Internal:	Zero	Cal		Zero	Cal		m	b
Deep	0.005	0.661	V	0.000	500.000	mmho-m	761.876	-3.771
Medium	0.006	0.780	V	0.000	500.000	mmho-m	646.628	-4.132

Downhole Calibration

Readings				References			Results	
Internal:	Zero	Cal		Zero	Cal		m	b
Deep	9.957	506.374	mmho-m	0.000	400.000	mmho-m	0.806	-8.023
Medium	-3.026	532.622	mmho-m	0.000	462.000	mmho-m	0.863	2.610
Shallow	0.050	9.769	V	10.000	1000.000	Ohm-m	125.000	5.500

Gamma Ray Calibration Report

Serial Number: 2001
 Tool Model: OH
 Performed: Sat Mar 18 16:01:28 2006

