

Patterson

CompanyXTO Energy Inc.
Well Apache Canyon 06-08
Field Purgatorie River
County Las Animas
State CO

Company XTO Er
Well Apache
Field Purgato
County Las Ani

Location:

1751

SEC 6

Permanent Datum Grc
Log Measured From Grc
Drilling Measured From Grc

Date 8/10/

Run Number twc
Depth Driller 261
Depth Logger 132
Bottom Logged Interval 132
Top Log Interval Sur
Open Hole Size 7 7/
Type Fluid wat
Density / Viscosity ///
Max. Recorded Temp. ///
Estimated Cement Top Sur
Time Well Ready 10:2
Time Logger on Bottom 10:2
Equipment Number T24
Location Trinic
Recorded By Worl
Witnessed By Mr. Bl

Borehole Record

Run Number Bit From To

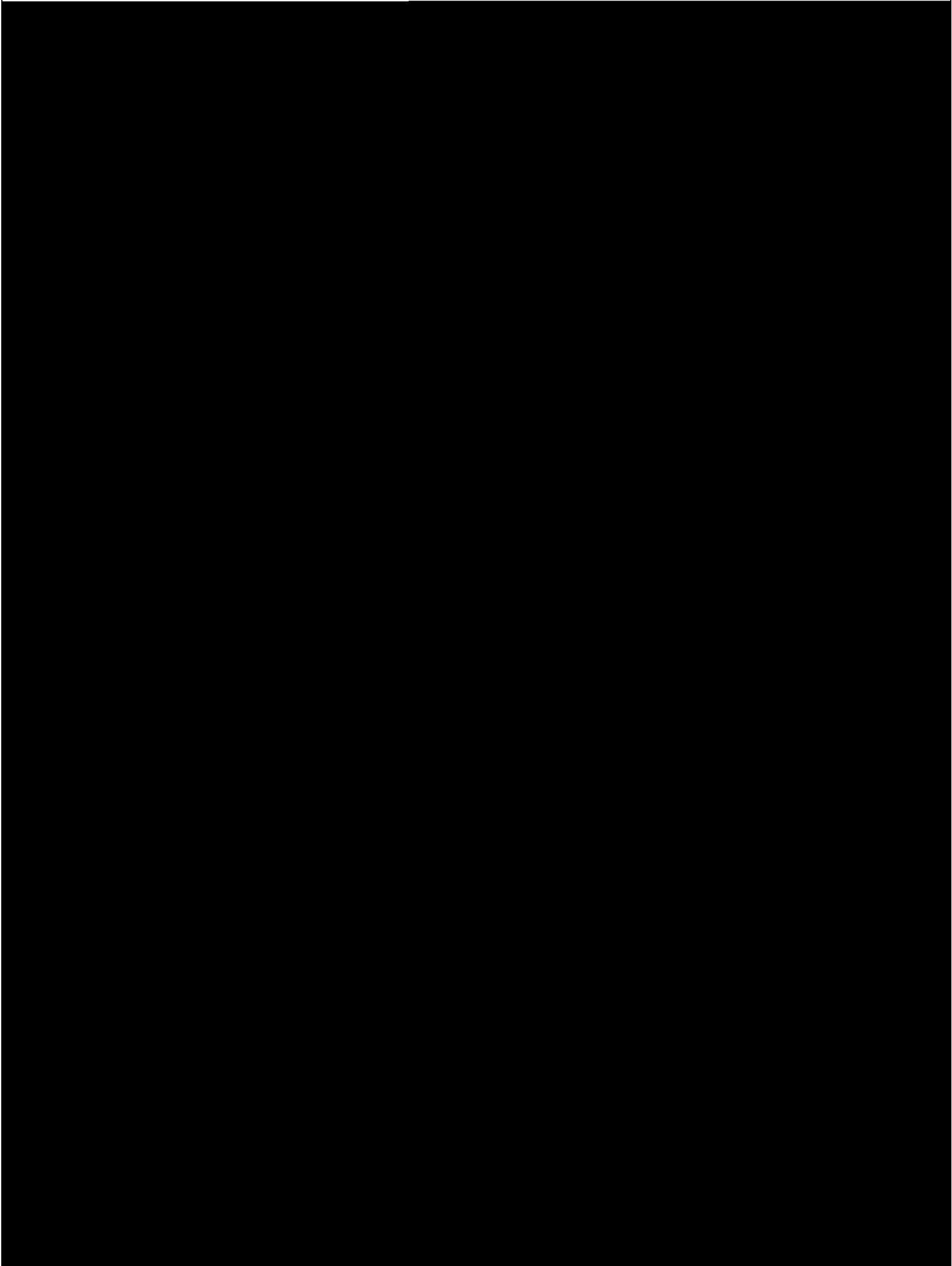
Casing Record Size

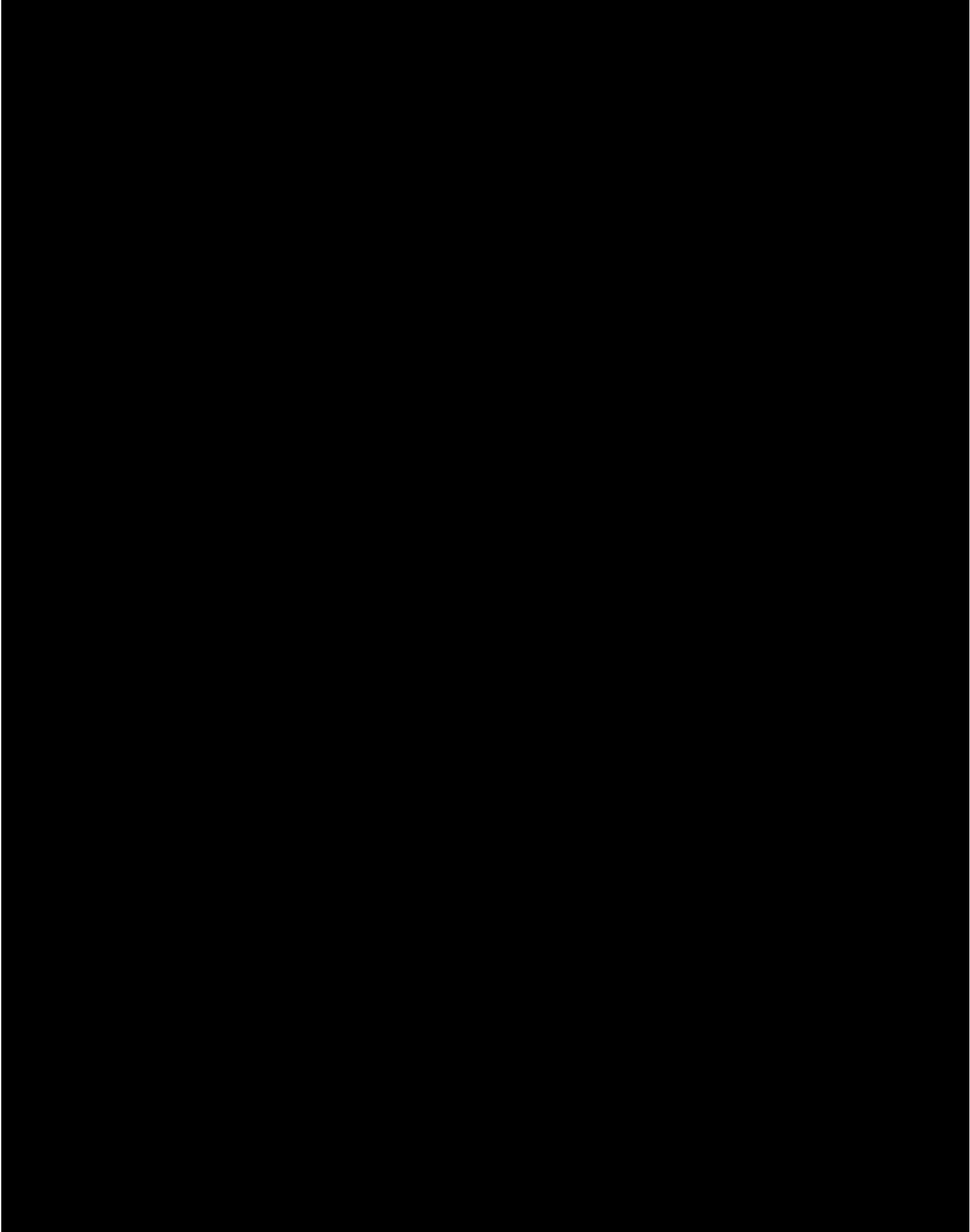
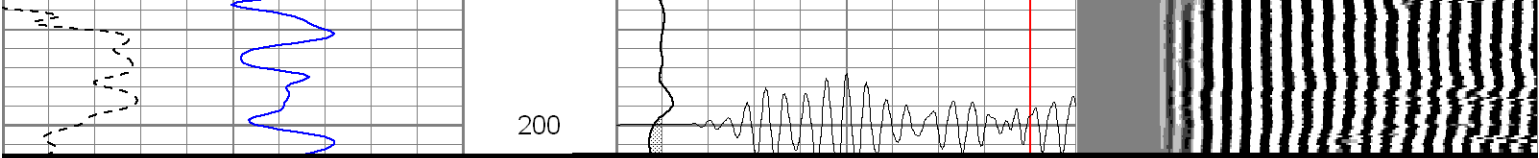
Surface String 8 5/8"

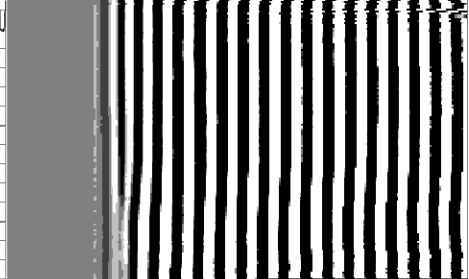
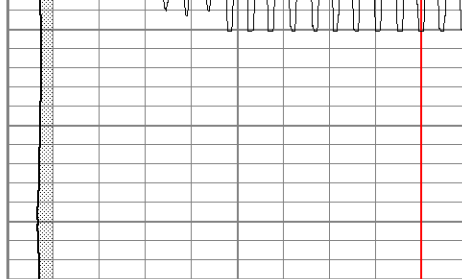
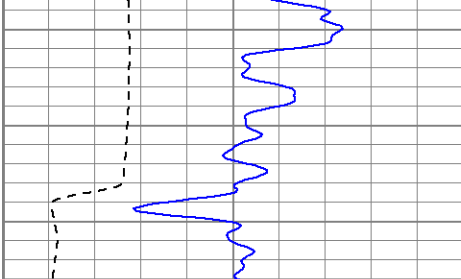
Prot. String

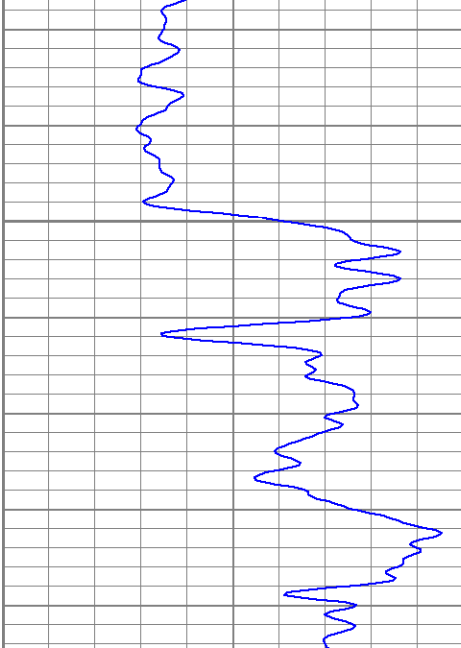
Production String 5 1/2"

Liner

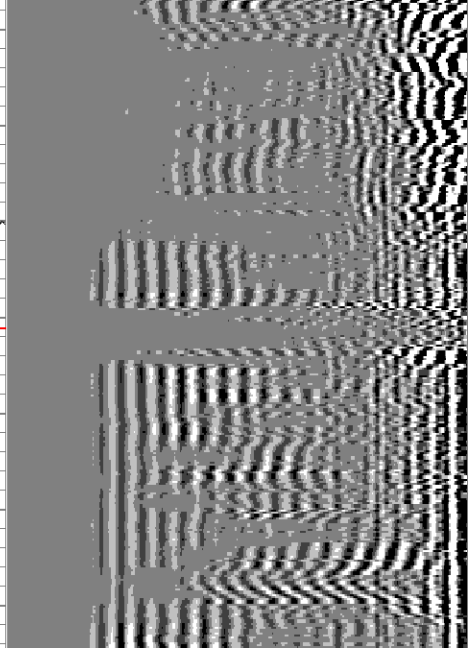


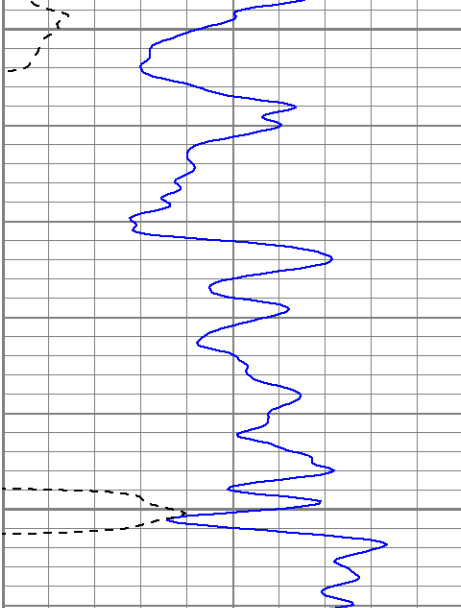






650





850

900

