



**GAMMA RAY
CCL LOG**

Company SOUTH OIL
Well WHITING 35-2
Field WILDCAT
County MESA State MESA

Location: API #: 05-077-08939-00
SEC 35 TWP 2S RGE 2E
Permanent Datum G.L. Elevation 5358'
Log Measured From G.L.
Drilling Measured From G.L. Elevation
K.B. 0
D.F. 0
G.L. 5358'

Date	9-27-05		
Run Number	ONE		
Depth Driller	1320'		
Depth Logger	1316'		
Bottom Logged Interval	1316'		
Top Log Interval	SURFACE		
Open Hole Size	6 1/8"		
Type Fluid	AIR		
Density / Viscosity	NA		
Max. Recorded Temp.	0		
Estimated Cement Top	NA		
Time Well Ready	NA		
Time Logger on Bottom	NA		
Equipment Number	ST0501W		
Location	GRAND JUNCTION		
Recorded By	S CORNETT		
Witnessed By	D BENTON		
Borehole Record		Tubing Record	
Run Number	Bit	From	To
NA			
Casing Record	Size	Wgt/ft	Top
Surface String	7"	NA	SURFACE
Prot. String	NA		
Production String	NA		
Liner	NA		Bottom
			360'

<<< Fold Here >>>

All interpretations are opinions based on inferences from electrical or other measurements and we cannot and do not guarantee the accuracy or correctness of any interpretation, and we shall not, except in the case of gross or willful negligence on our part, be liable or responsible for any loss, costs, damages, or expenses incurred or sustained by anyone resulting from any interpretation made by any of our officers, agents or employees. These interpretations are also subject to our general terms and conditions set out in our current Price Schedule.

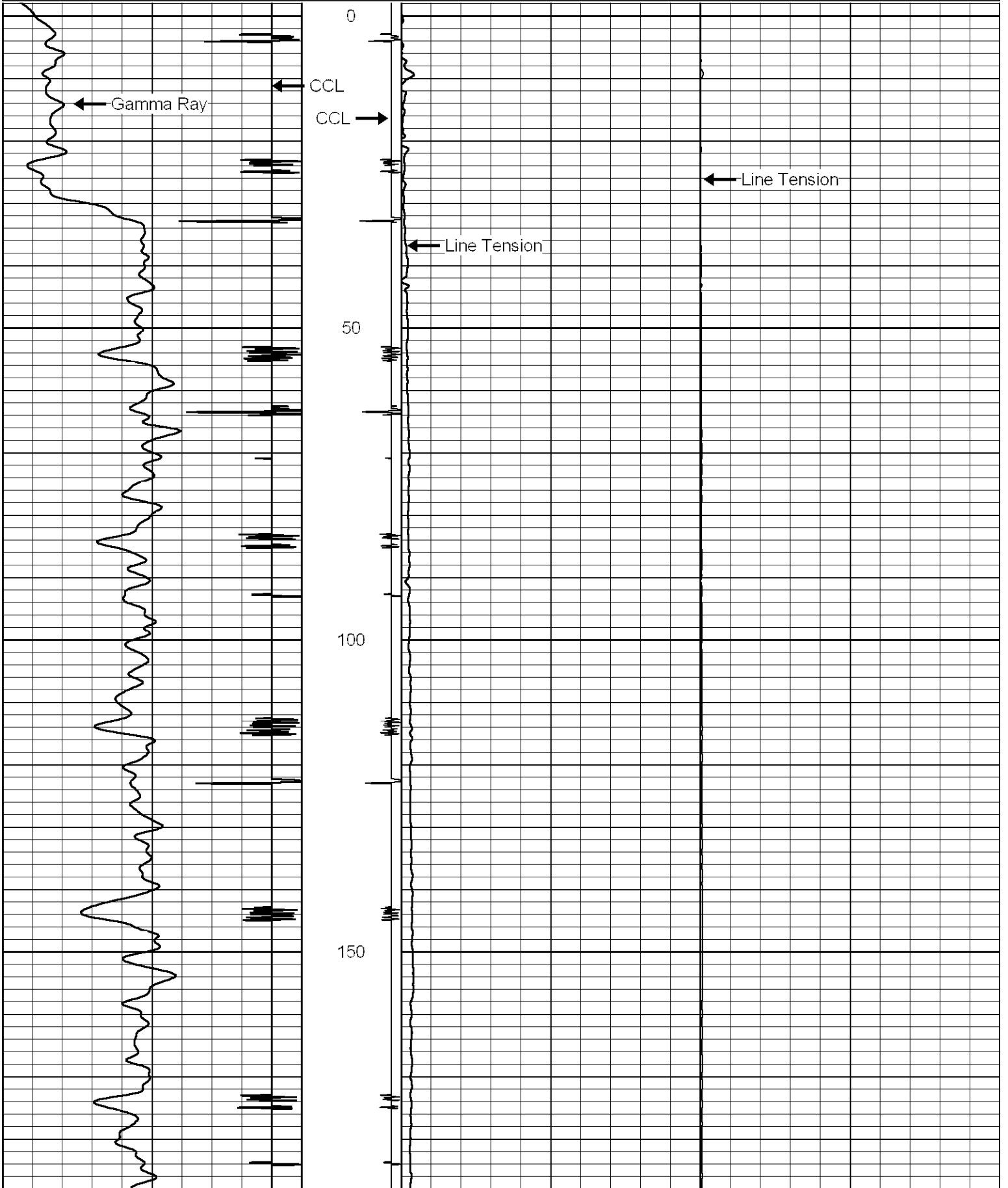
Comments

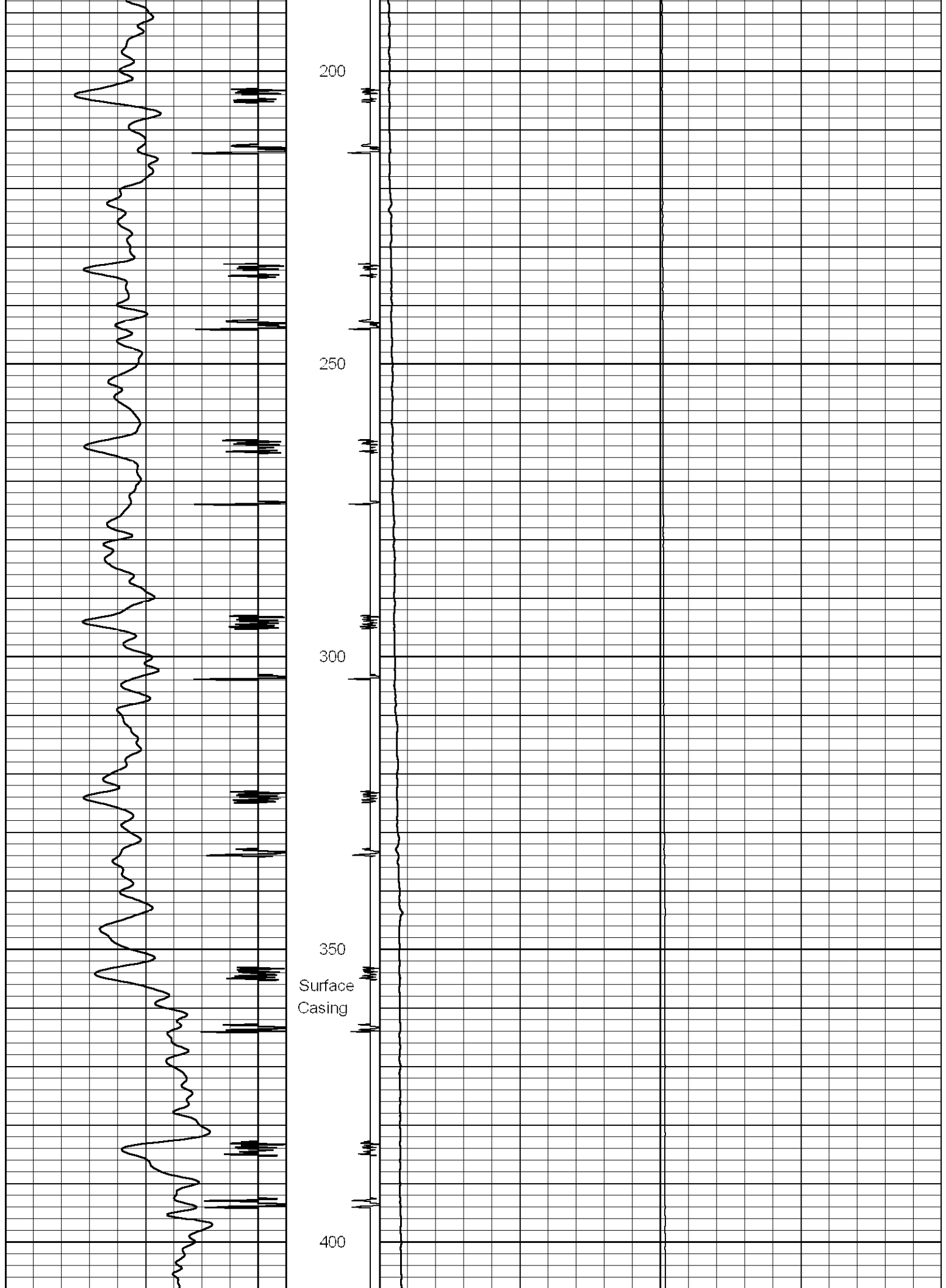
LOGGED THROUGH 4" 16.6# DRILL PIPE

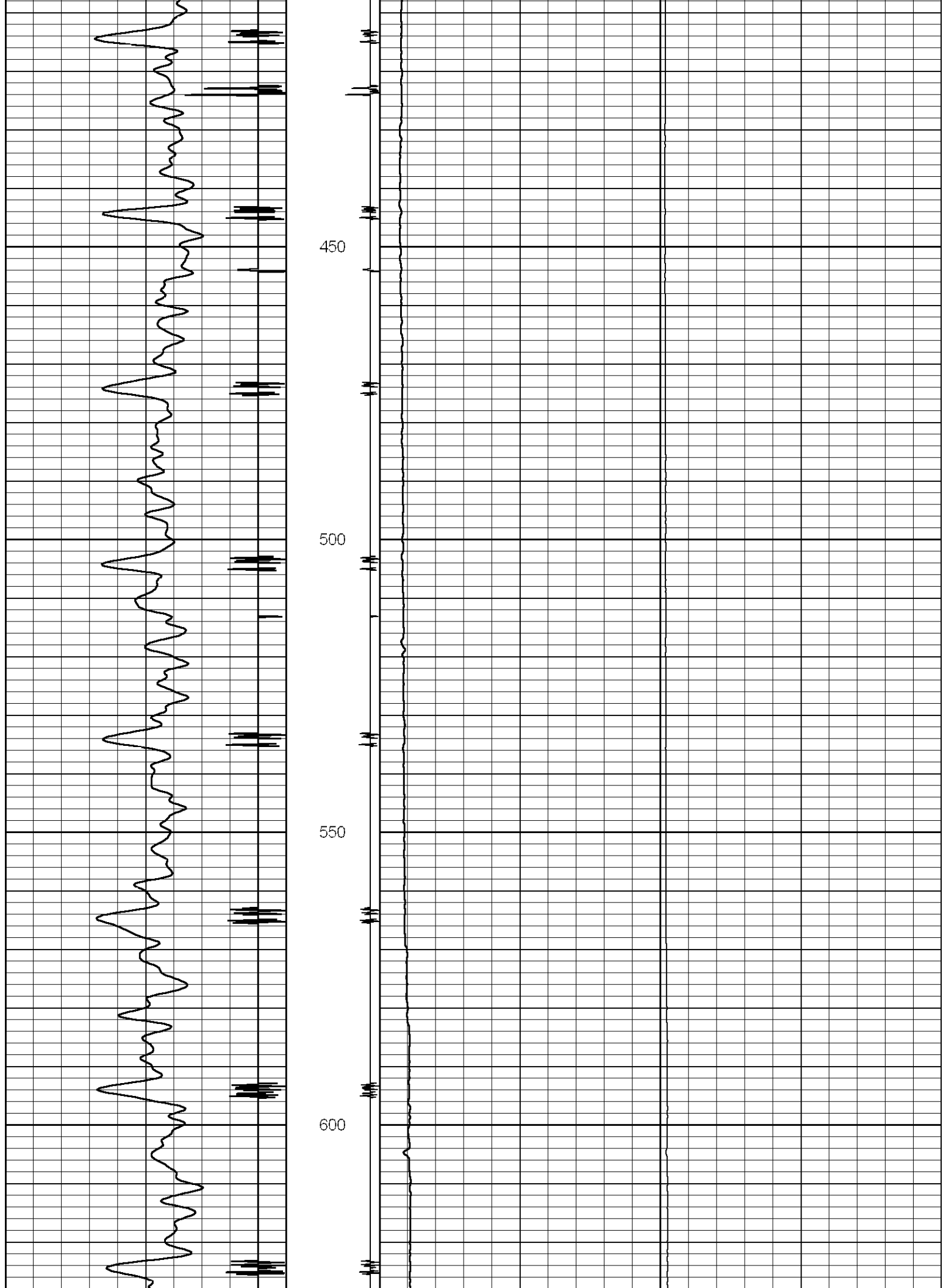


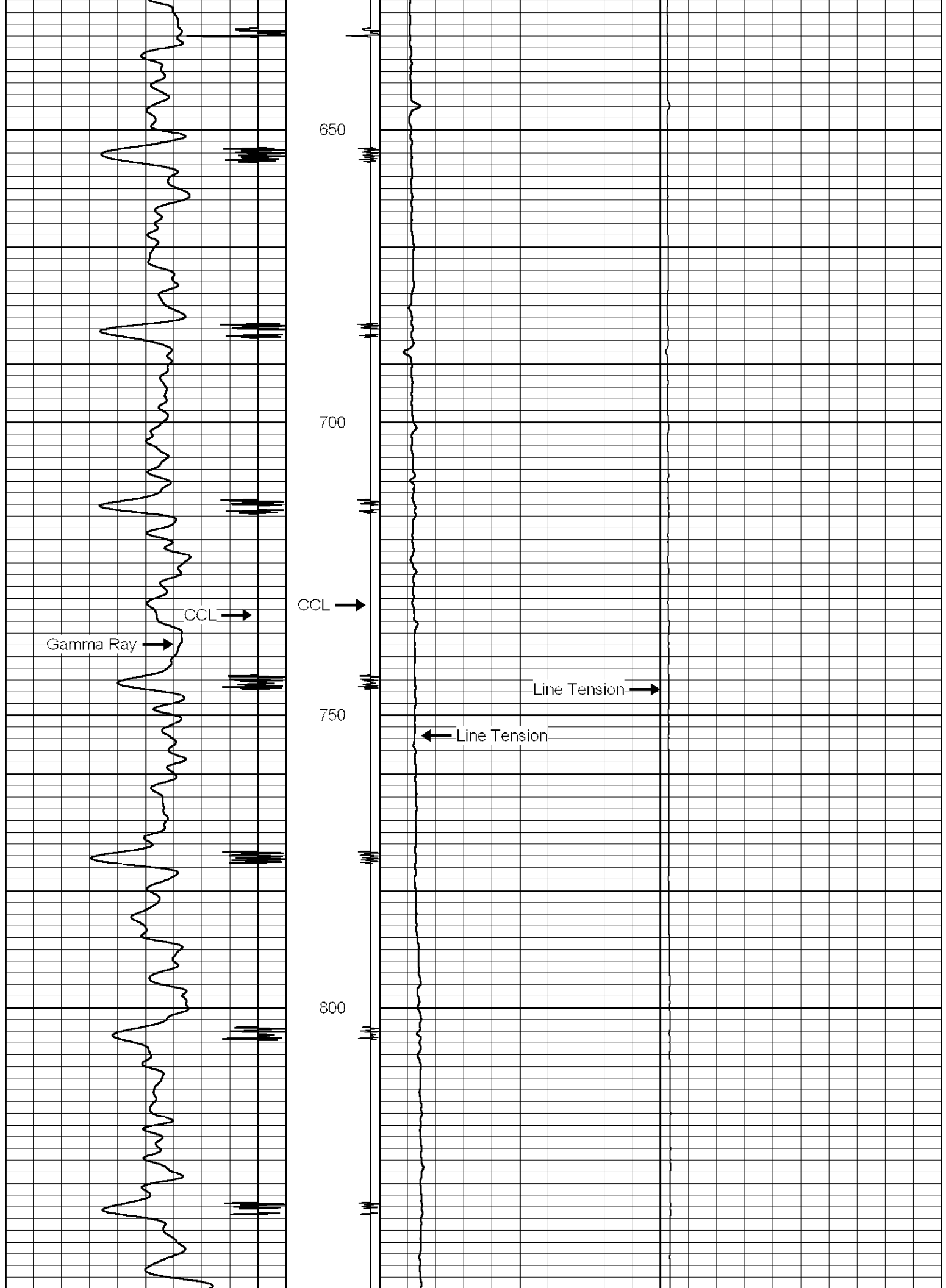
MAIN PASS

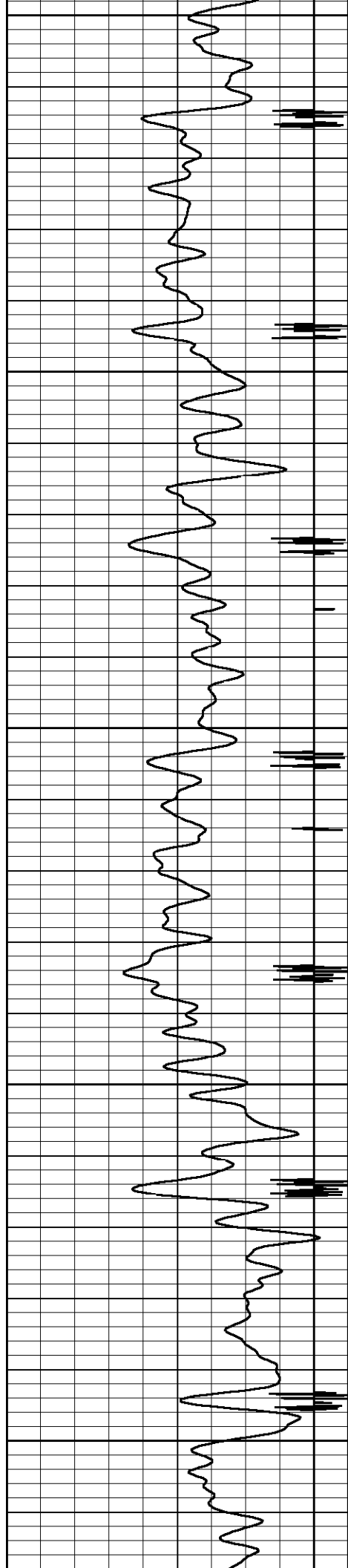
9	CCL	-1	9	CCL	-1	0	LTEN (lb)	1000	0	LTEN (lb)	4000
0	GR (cps)	200									











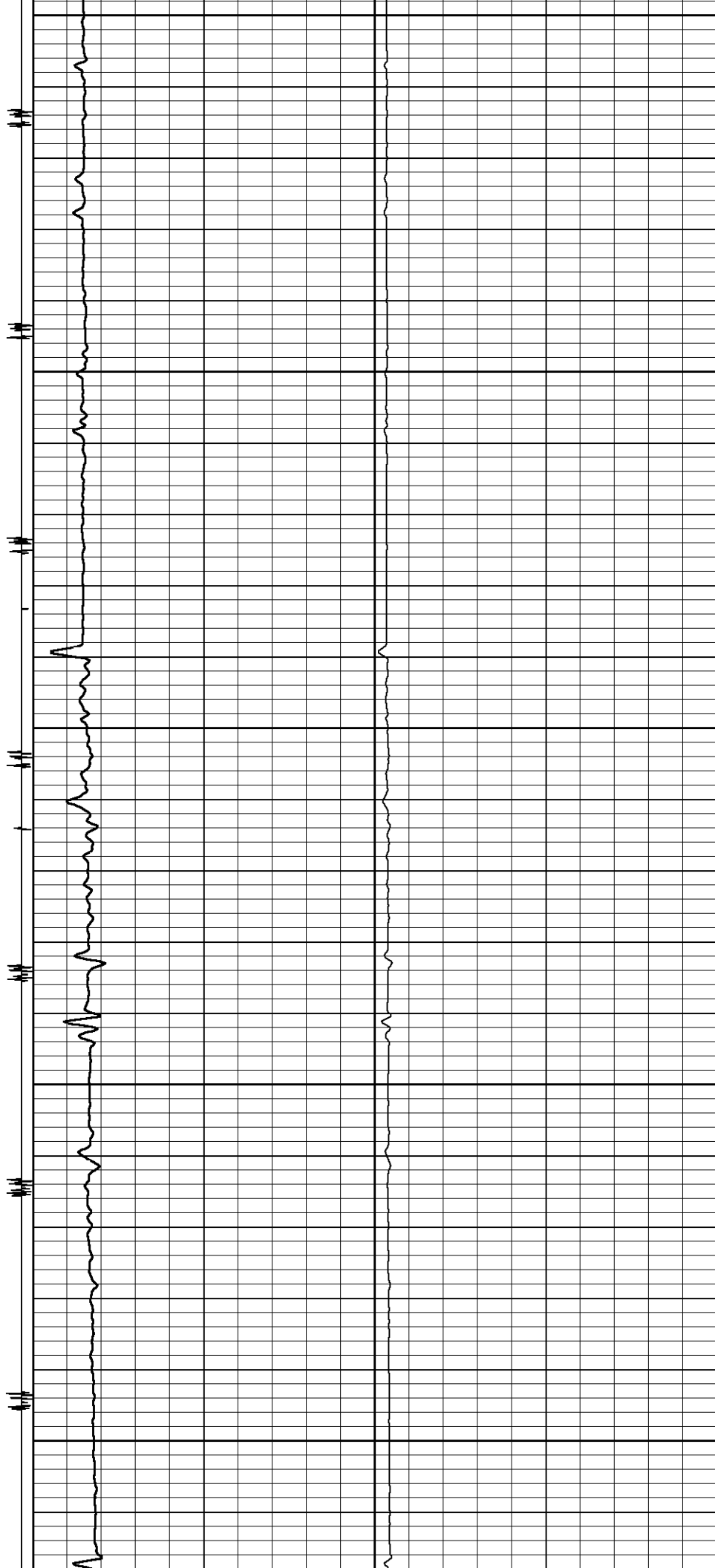
850

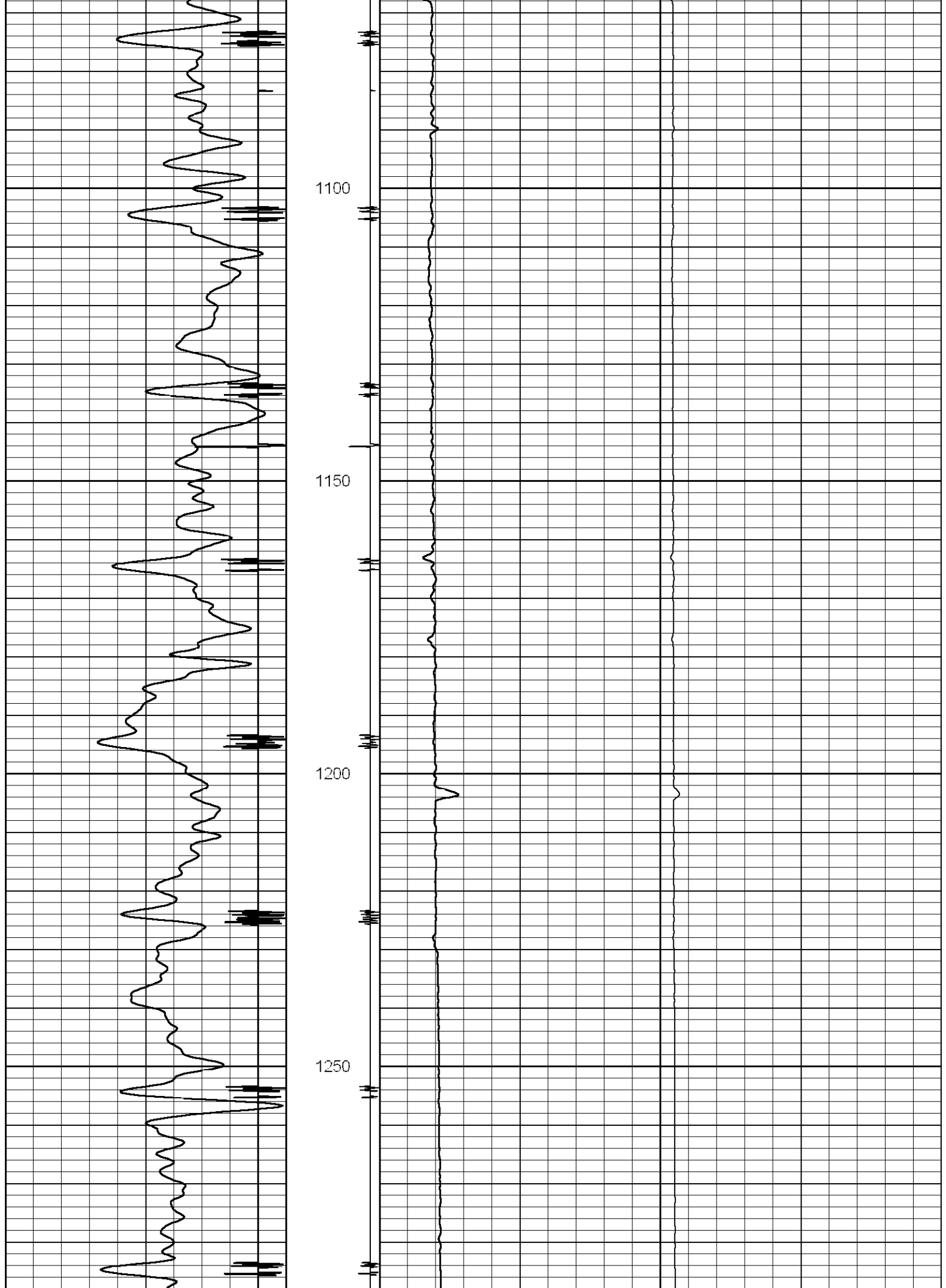
900

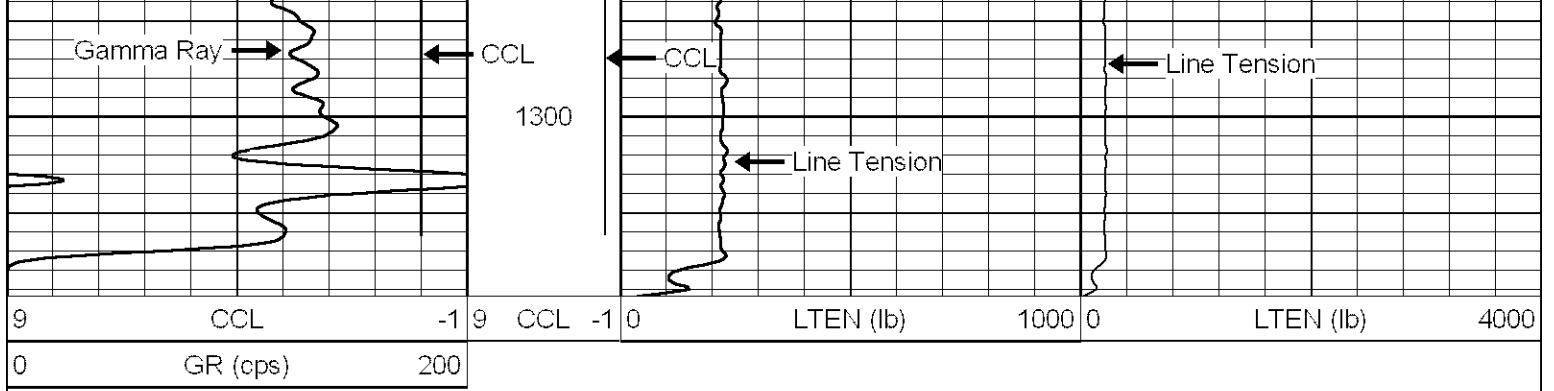
950

1000

1050



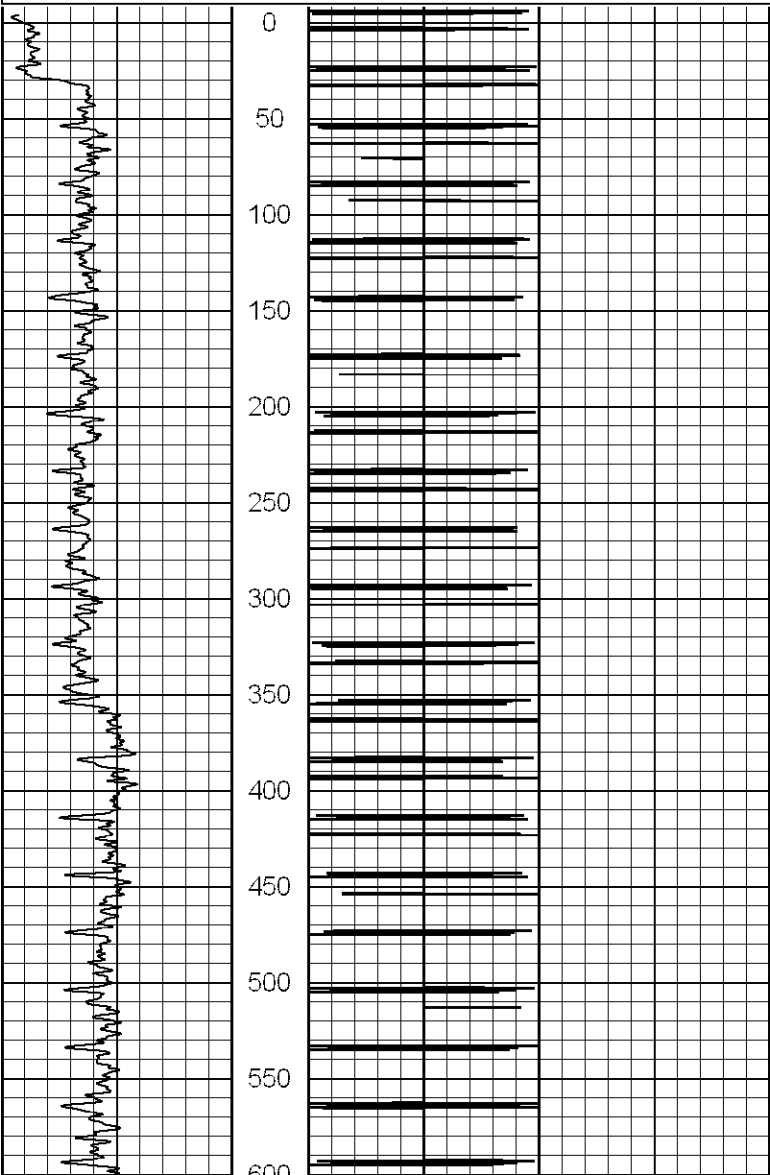


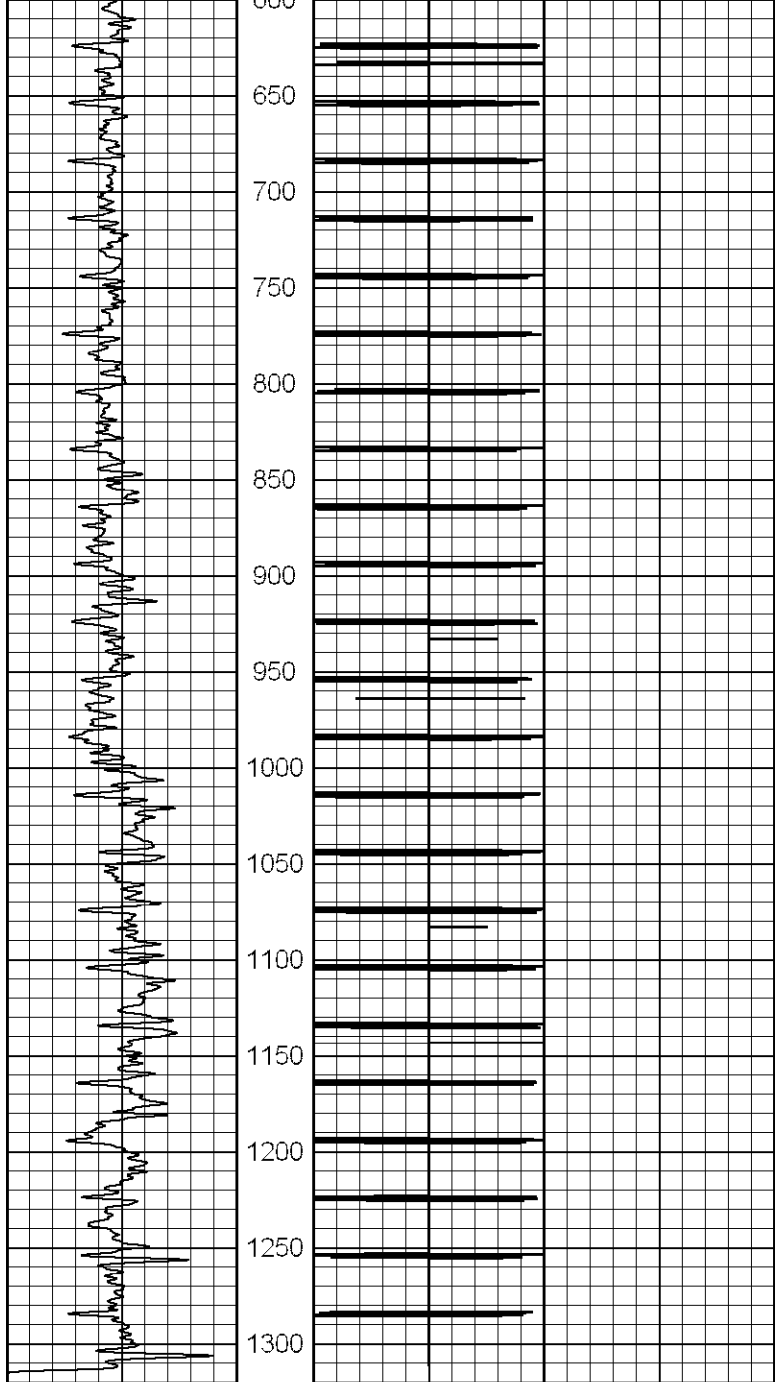


MAIN PASS

Database File: whitng35-2.db
 Dataset Pathname: wildcat/whiting/merge/one
 Presentation Format: gr-ccl
 Dataset Creation: Tue Sep 27 11:42:13 2005
 Charted by: Depth in Feet scaled 1:1200

0 GR (cps) 250 1 CCL -1





0 GR (cps) 250

1 CCL -1