

**Patterson**

**CEMENT BOND  
LOG**

Company XTO Energy, Inc.  
Well Apache Canyon 05-12-2  
Field Purgatorie River  
County Las Animas State Colorado

Location: API # : 05-071-08748-00  
2001' FSL & 1201' FWL  
SEC 5 TWP 34S RGE 67W  
Permanent Datum Ground Level Elevation 7577'  
Log Measured From Ground Level  
Drilling Measured From Ground Level  
Other Services  
Elevation  
K.B. -----  
D.F. -----  
G.L. 7577'

Company XTO Energy, Inc.  
Well Apache Canyon 05-12-2  
Field Purgatorie River  
County Las Animas  
State Colorado

Date 8-23-06

Run Number	One
Depth Driller	1100'
Depth Logger	1099'
Bottom Logged Interval	1097'
Top Log Interval	Surface
Open Hole Size	7 7/8"
Type Fluid	Water
Density / Viscosity	////
Max. Recorded Temp.	////
Estimated Cement Top	Surface
Time Well Ready	2:10 P.M.
Time Logger on Bottom	2:15 P.M.
Equipment Number	T096
Location	Trinidad
Recorded By	S. Allen
Witnessed By	

Borehole Record				Tubing Record			
Run Number	Bit	From	To	Size	Weight	From	To

Casing Record	Size	Wgt/Ft	Top	Bottom
Surface String	8 5/8"		00	225'
Prot. String				
Production String	5 1/2"		00	N/A
Liner				

>>> Fold Here >>>

All interpretations are opinions based on inferences from electrical or other measurements and we cannot and do not guarantee the accuracy or correctness of any interpretation, and we shall not, except in the case of gross or willful negligence on our part, be liable or responsible for any loss, costs, damages, or expenses incurred or sustained by anyone resulting from any interpretation made by any of our officers, agents or employees. These interpretations are also subject to our general terms and conditions set out in our current Price Schedule.

Comments

Well Directions:  
Turn at Bosque Entrance Just Before Weston-Turn Right at Alamosito Canyon-Drive Through Green Gate-  
At "Y" Turn Right-Drive 1 Mile to Location on Left.

**Patterson**

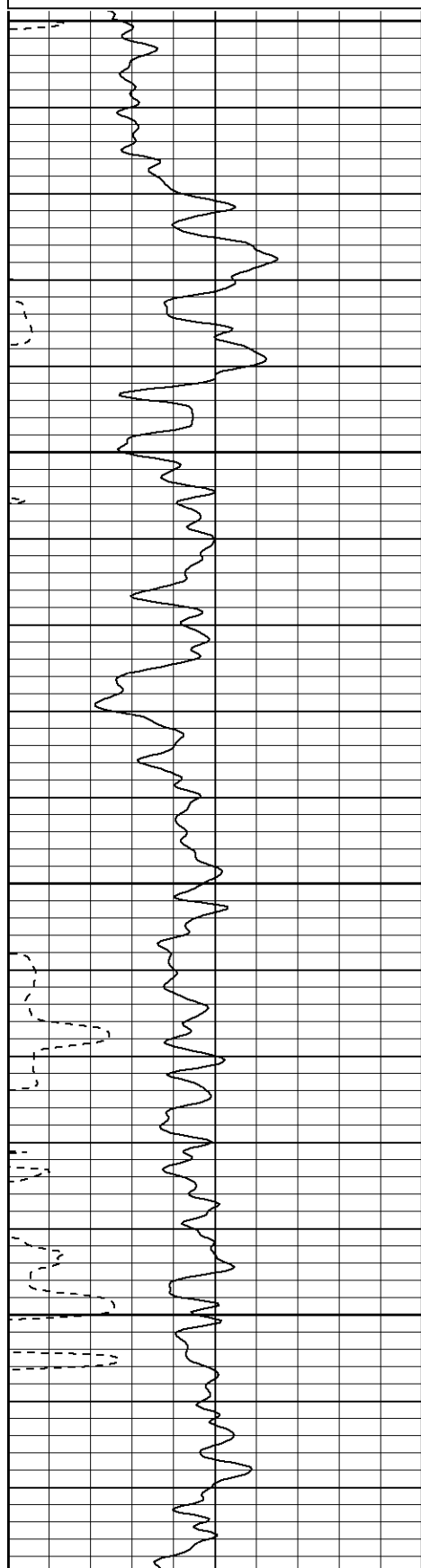
**Main Pass**

Database File: xtoac05122-082306b.db  
Dataset Pathname: pass2  
Presentation Format: cblrt  
Dataset Creation: Wed Aug 23 14:26:15 2006 by Log Warrior 7.0 STD Ope  
Charted by: Depth in Feet scaled 1:240

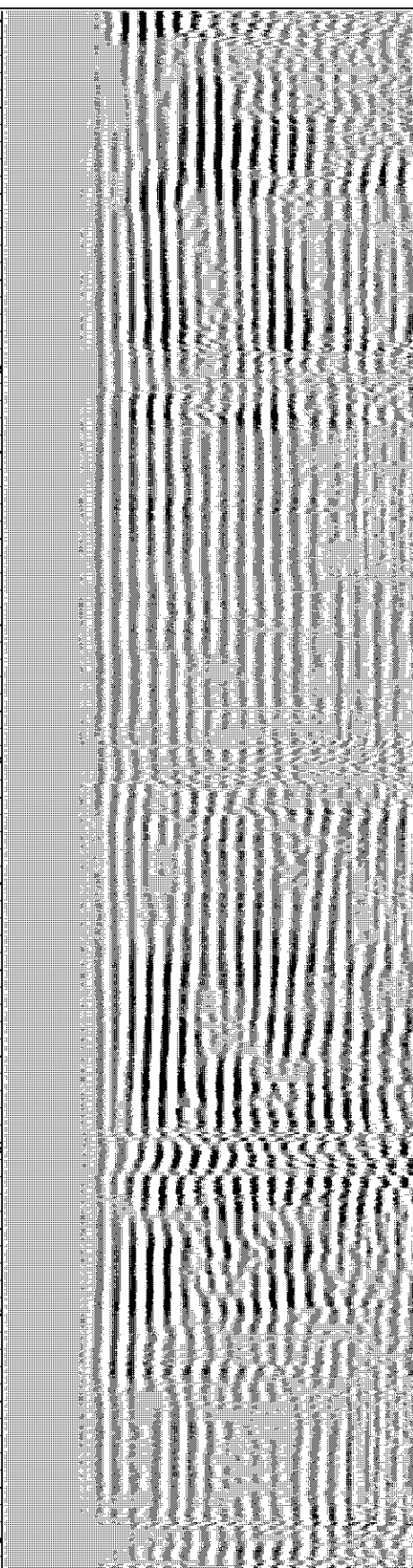
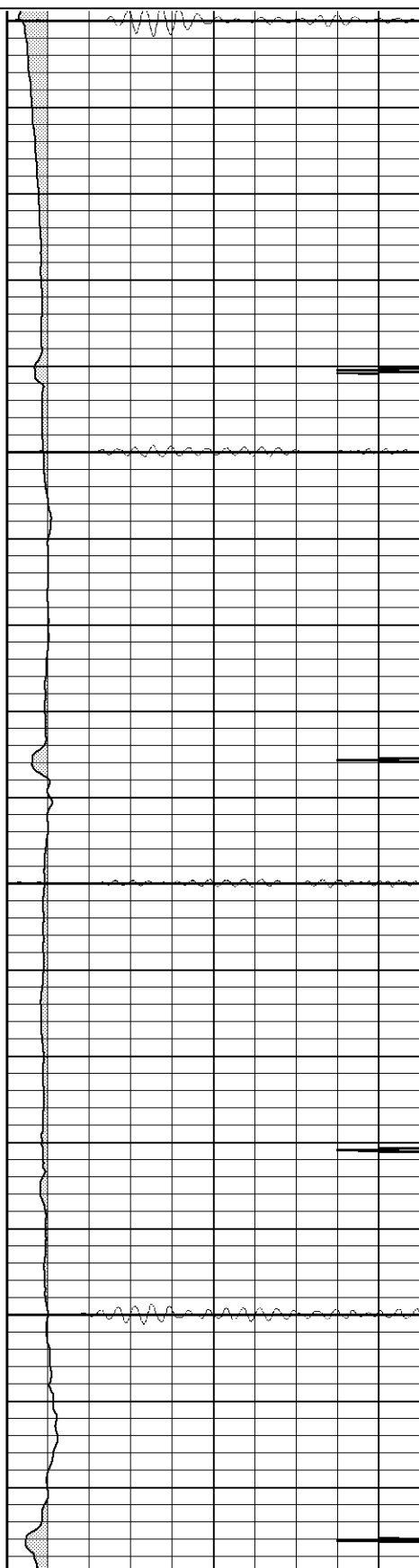
0	GR (GAPI)	200
400	TT3 (usec)	200
-----		
200	GR (GAPI)	400

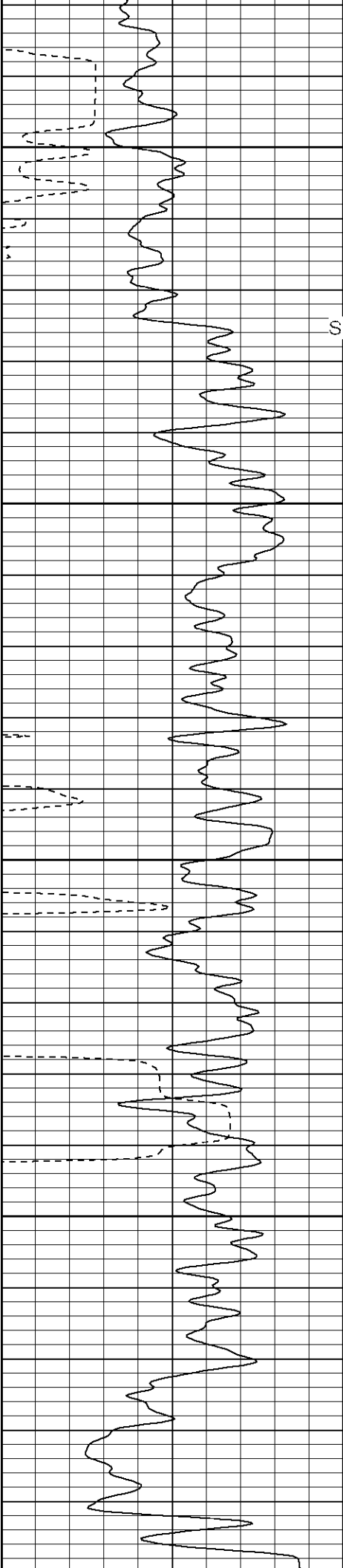
0	Amplitude (mV)	100
18	CCL	-2
-----		
200	CBL5	1200

200 VDL 1200



Fluid Level





Surface Casing

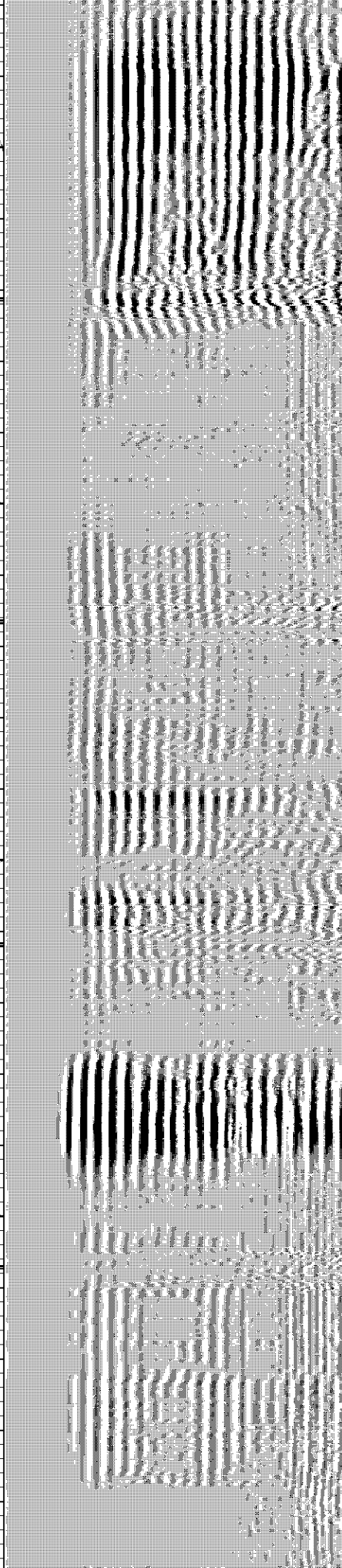
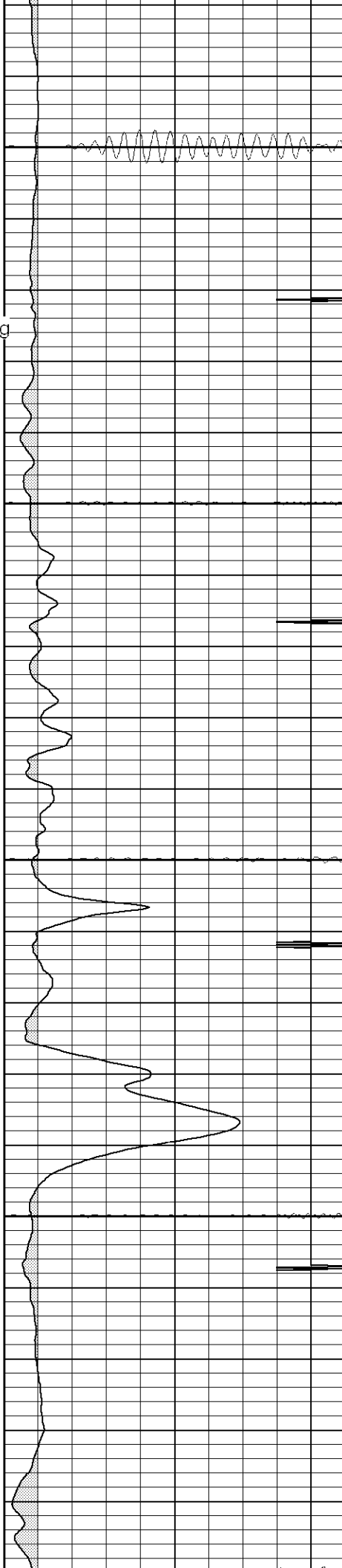
200

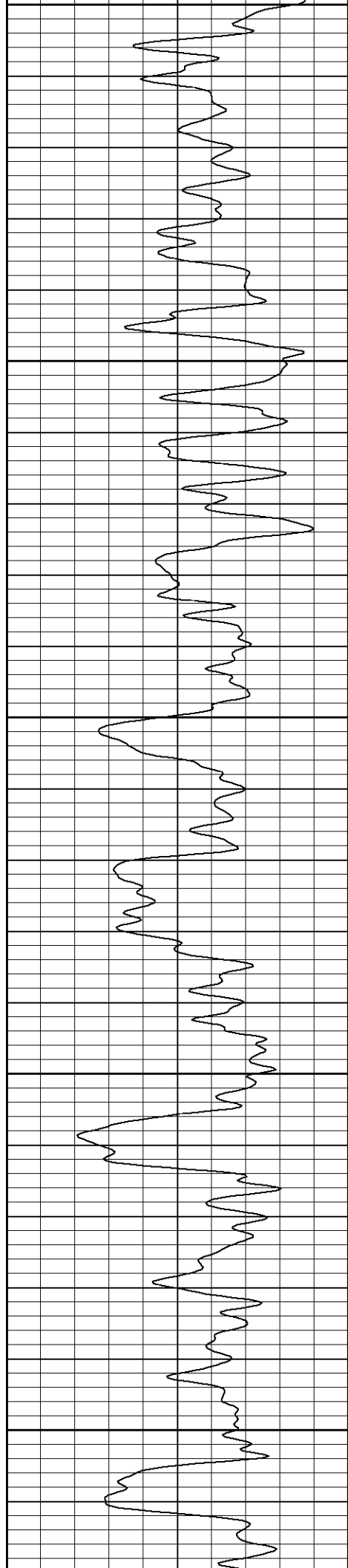
250

300

350

400





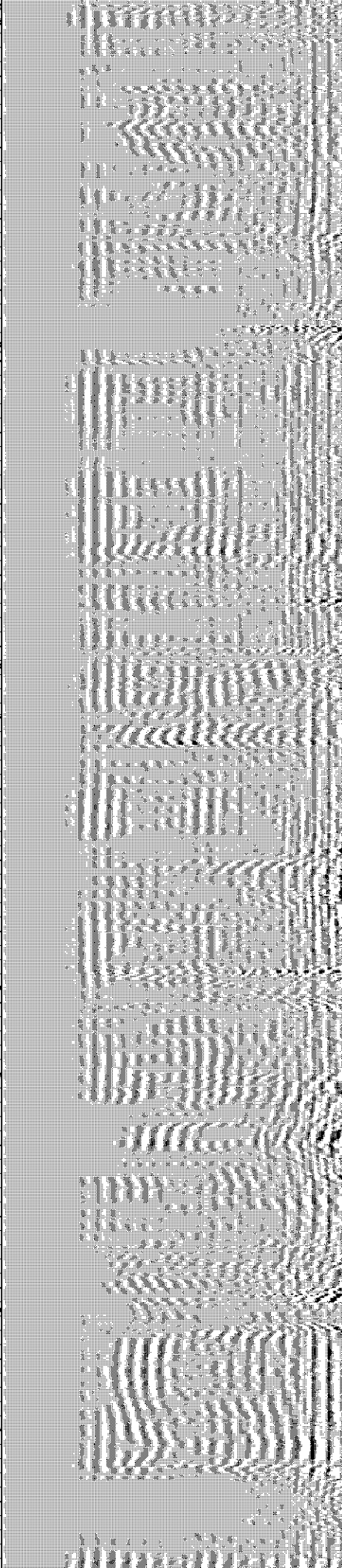
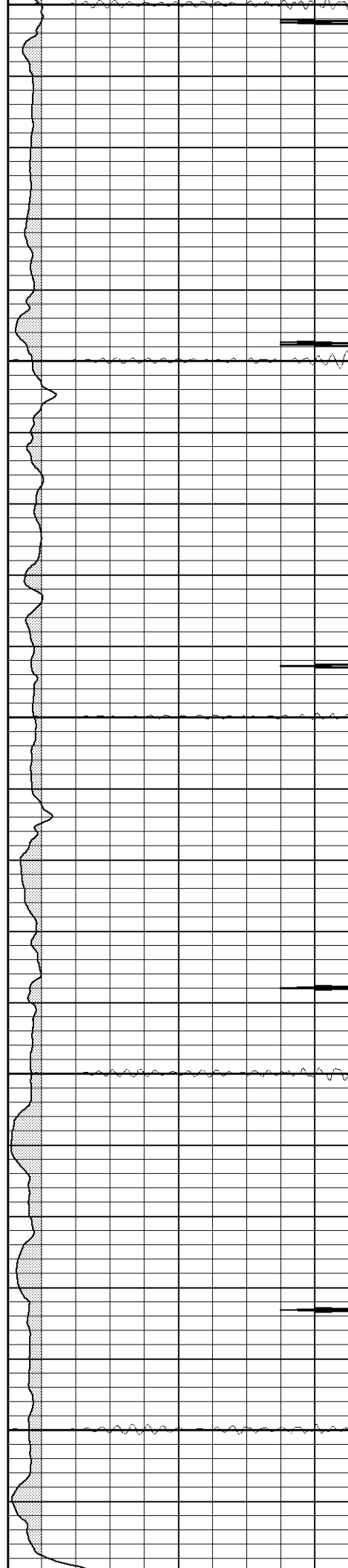
400

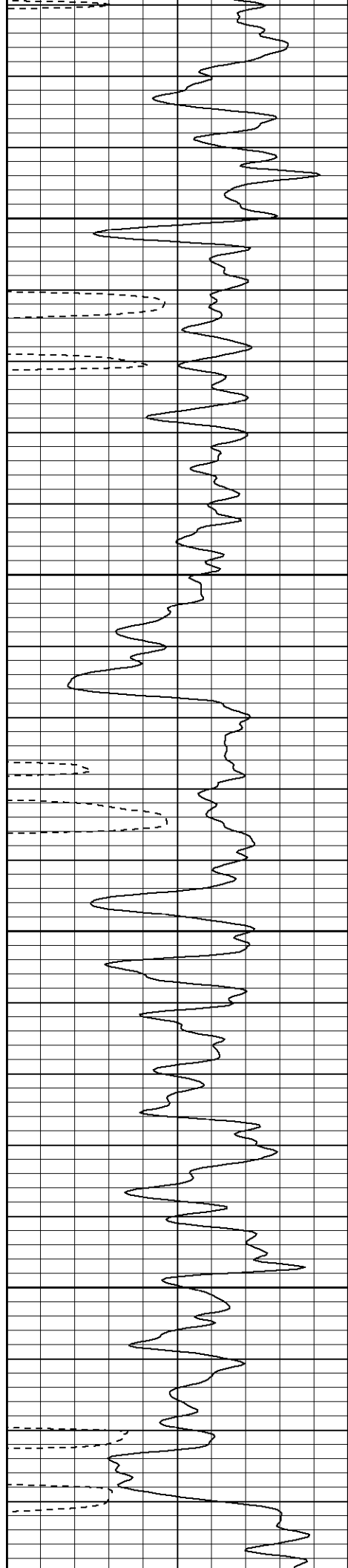
450

500

550

600



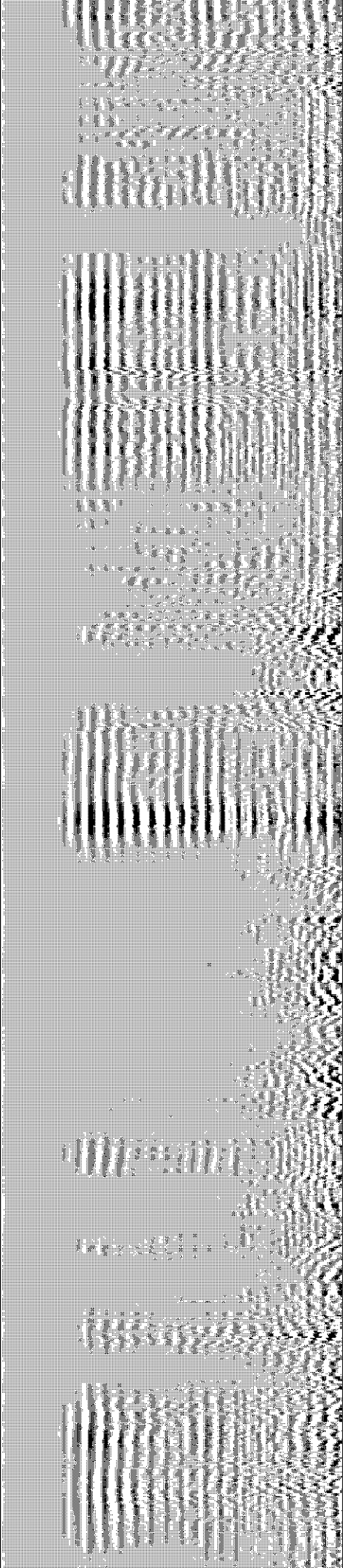
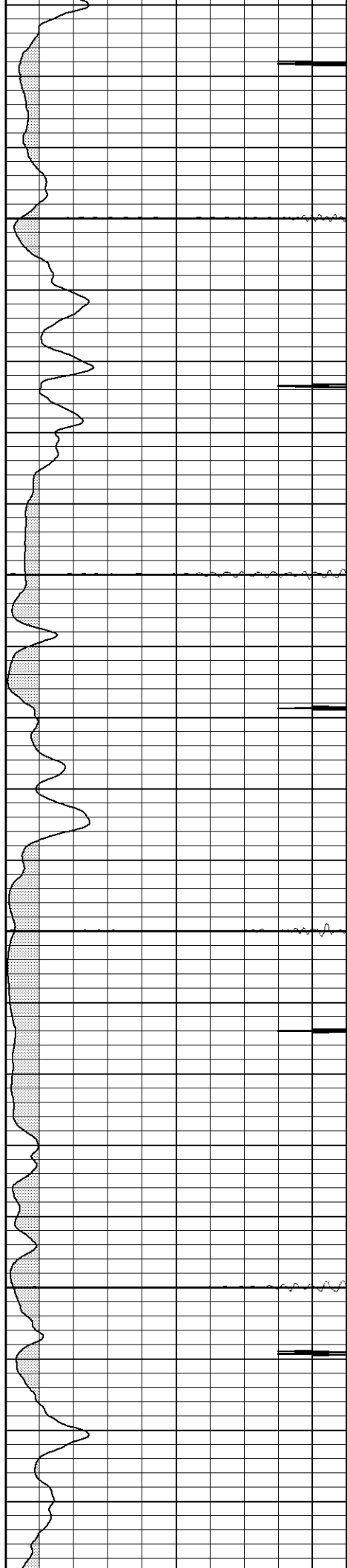


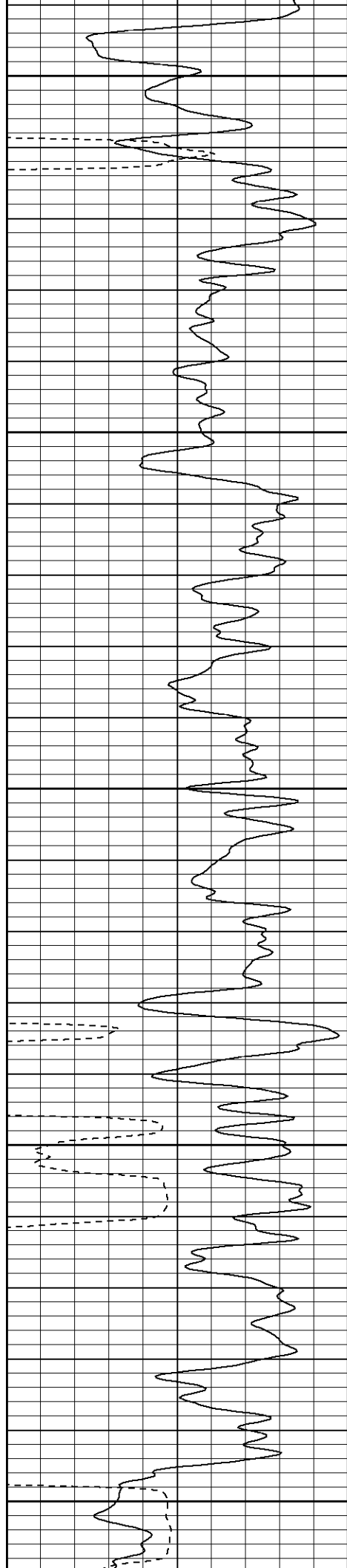
650

700

750

800





850

900

950

1000

1050



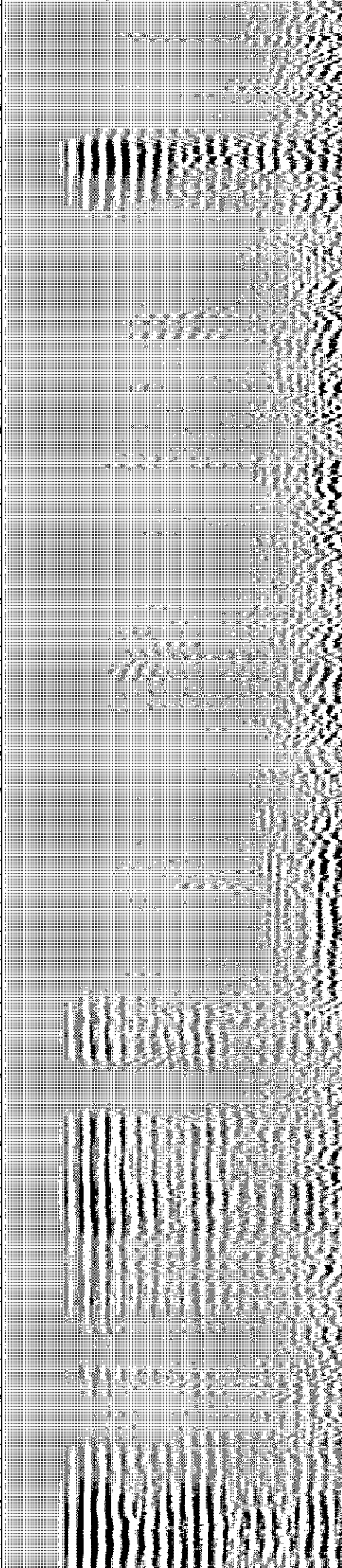
VA

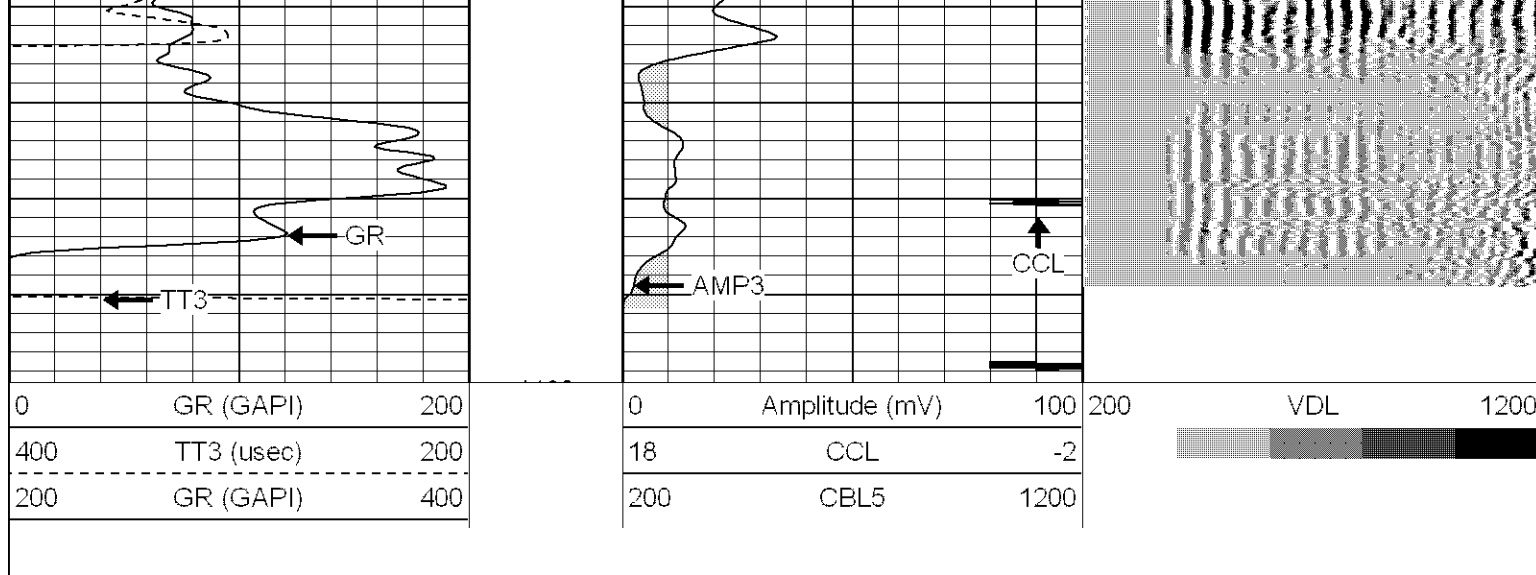
VA

VA

VA

VA

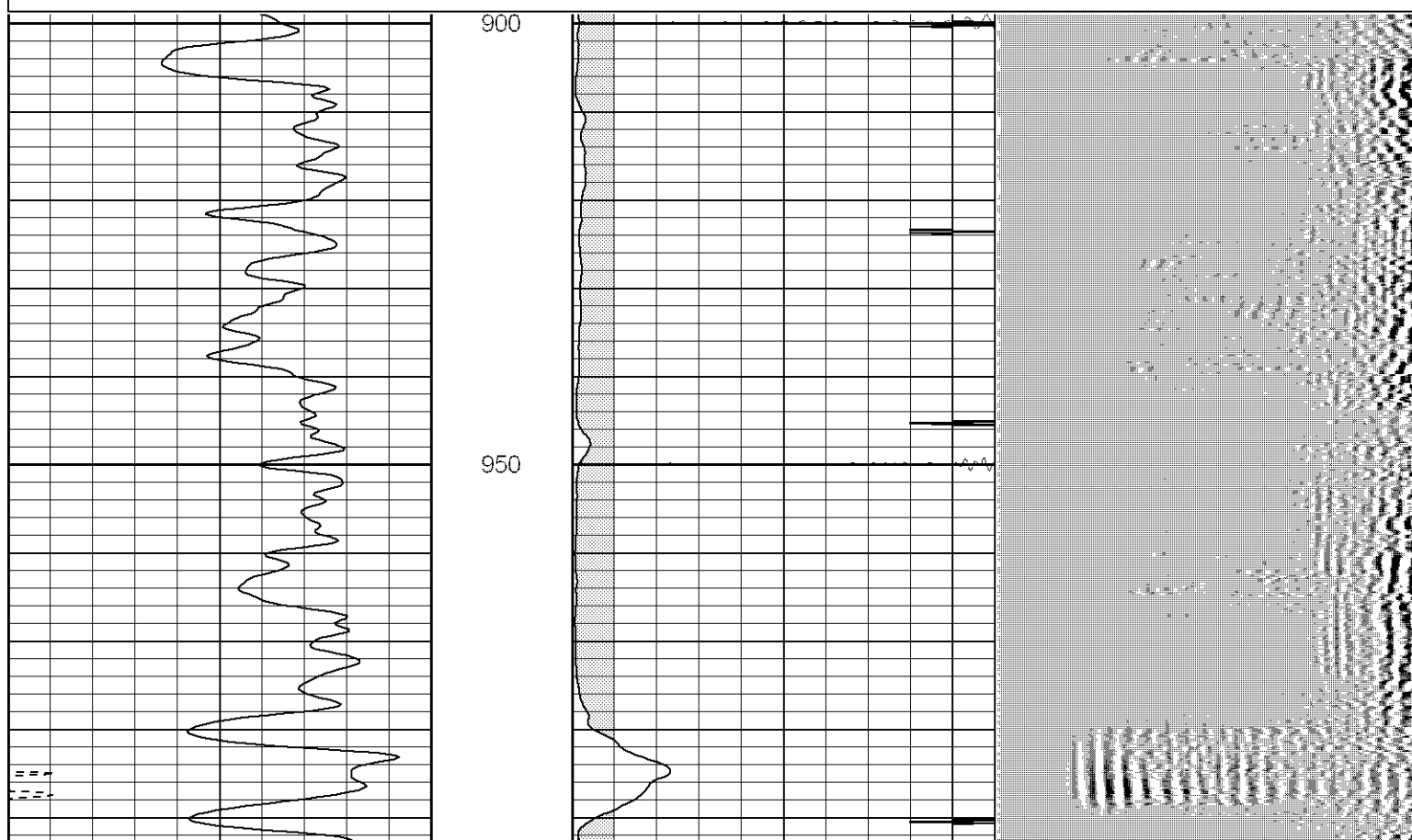
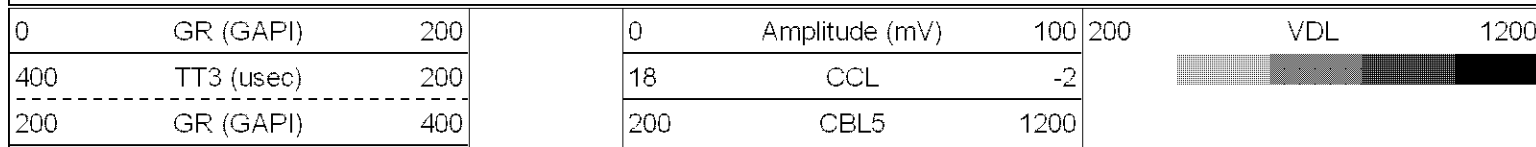


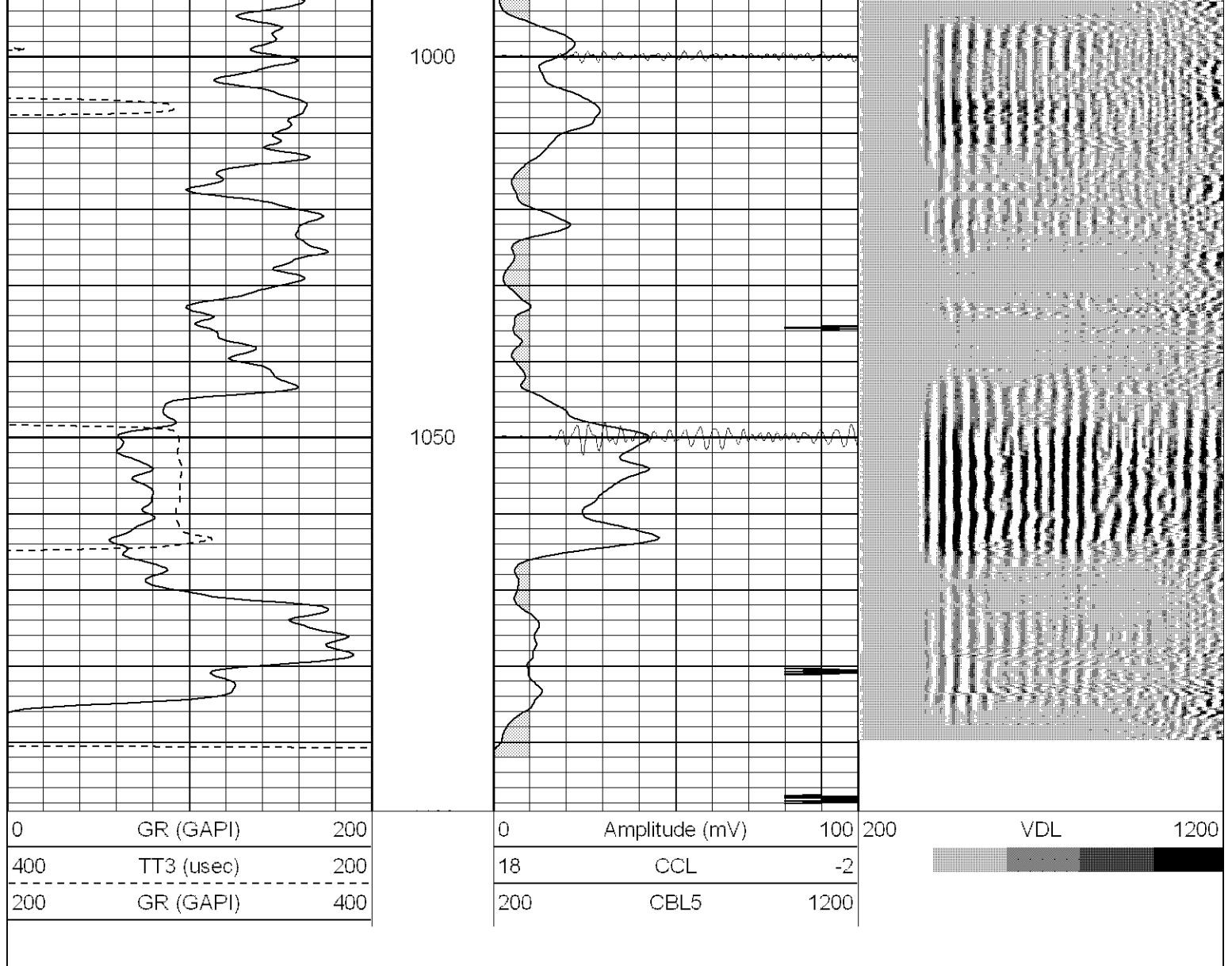


**Patterson**

# Repeat Section

Database File: xtoac05122-082306b.db  
 Dataset Pathname: pass1.1  
 Presentation Format: cblrt  
 Dataset Creation: Wed Aug 23 14:27:20 2006 by Calc Warrior 7.0 STD Ope  
 Charted by: Depth in Feet scaled 1:240





### Cement Bond Log Calibration Report

Serial Number:	Titan3		
Tool Model:	T3		
Performed:	Mon Jul 24 11:50:08 2006		
Depth:	41.715	ft	
Casing Diameter:	5.5	in	
	3' Spacing	5' Spacing	
Signal Zero:	1	1	mV
Calibrated Amplitude:	85	85	mV
Reading at Signal Zero:	0.02	0.00661621	V
Reading in Free Pipe:	1	1.3	V
Gain:	85.7143	64.9459	
Offset:	-0.714286	0.570304	

### Gamma Ray Calibration Report

Serial Number:	Titan3	
Tool Model:	T2	
Performed:	Wed Jun 28 07:58:58 2006	
Calibrator Value:	200.0	GAPI

Background Reading:	54.0	cps
Calibrator Reading:	219.0	cps
Sensitivity:	1.2500	GAPI/cps

Sensor	Offset (ft)	Schematic	Description	Len (ft)	OD (in)	Wt (lb)
GR	13.64		GR-T2 (Titan3)	2.52	2.44	25.00
WVF5	9.49		CBL-T3 (Titan3)	7.23	2.44	110.00
WVF3	8.49					
CENT	5.15		X	3.00	1.69	25.00
CCL	0.83		CCL-T5 (Titan3) Long	2.15	2.75	15.00
Dataset: /field/well/run1/_plots/_jobs_/cbl Total Length: 14.91 ft Total Weight: 175.00 lb O.D. 2.75 in						