

El Paso Production
C-69
5 inch Total Measured Depth
Gamma Ray Log

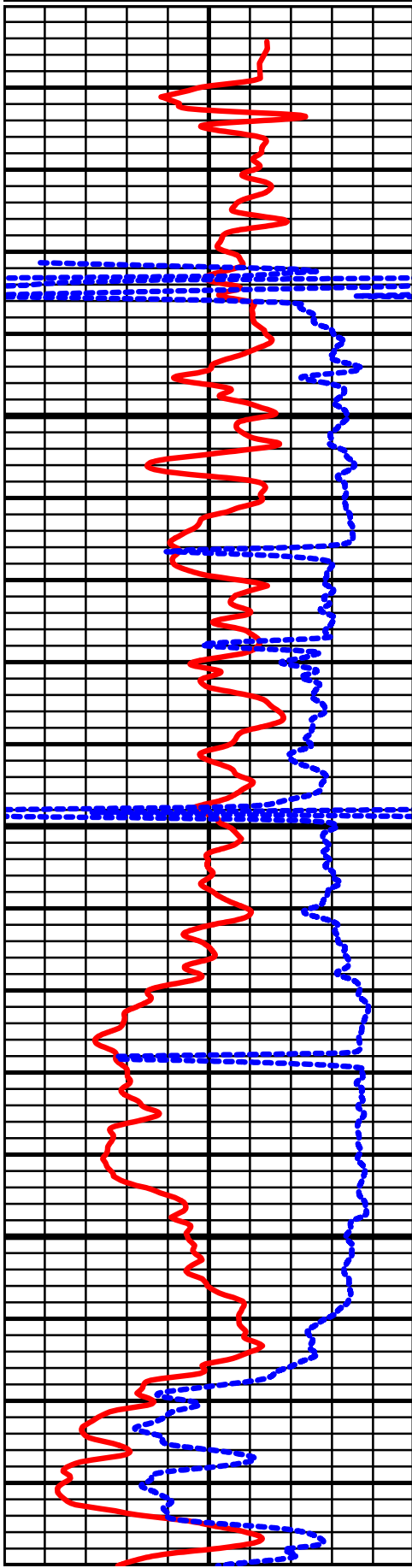
Gamma Counts (MWD) (api)
[0.00] ————— [150.00]

ROP (MWD) (ft/hr)
[-100.00] - - - - - [-200.00]

MD
1:240 (ft)

True Vertical Depth of Survey from EL PASO C-...
[1820.00] ————— [1840.00]

Inclination of Survey from EL PASO C-69 RE-E...
[0.00] - - - - - [20.00]

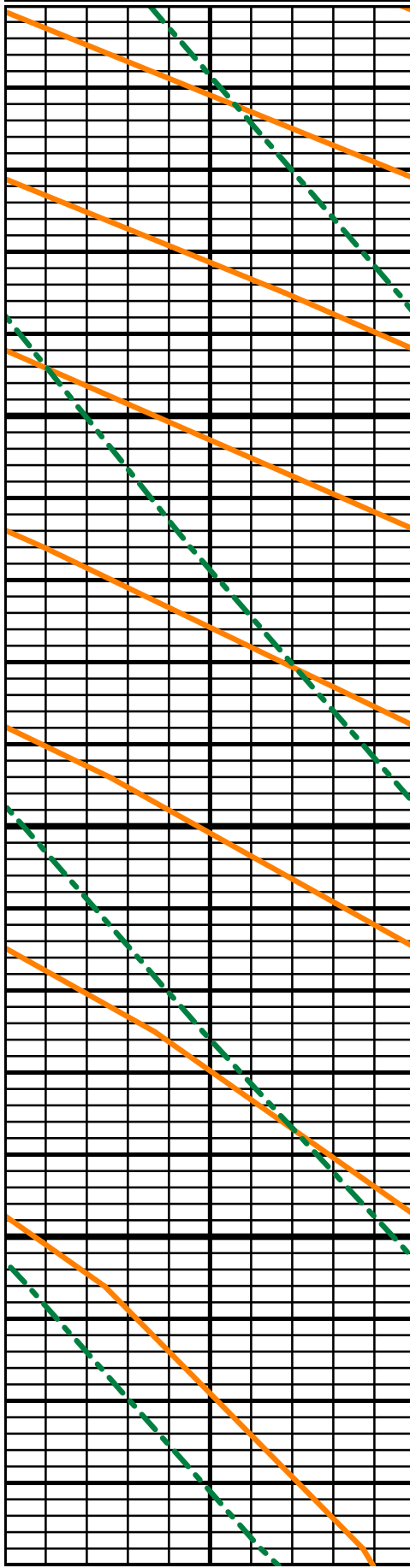


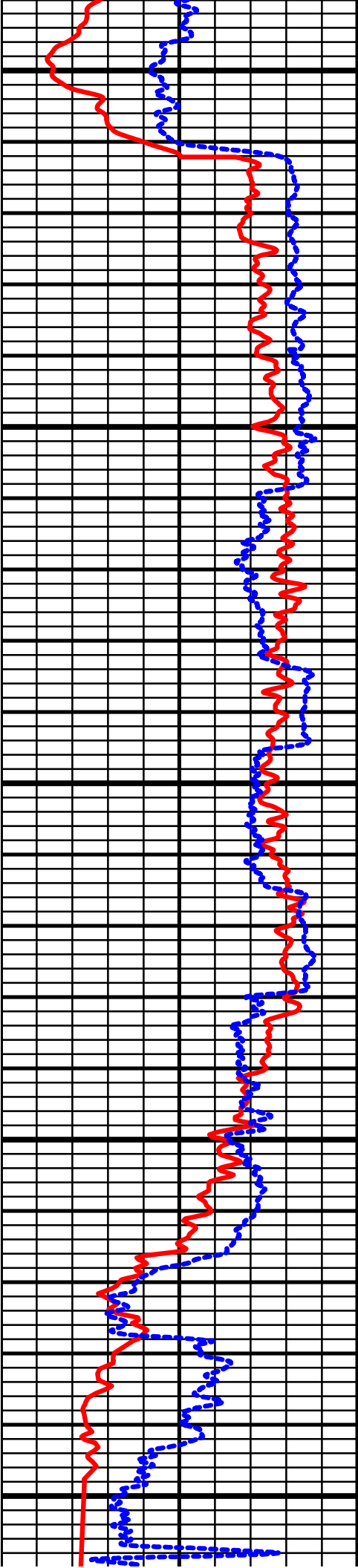
1800

1850

1900

1950





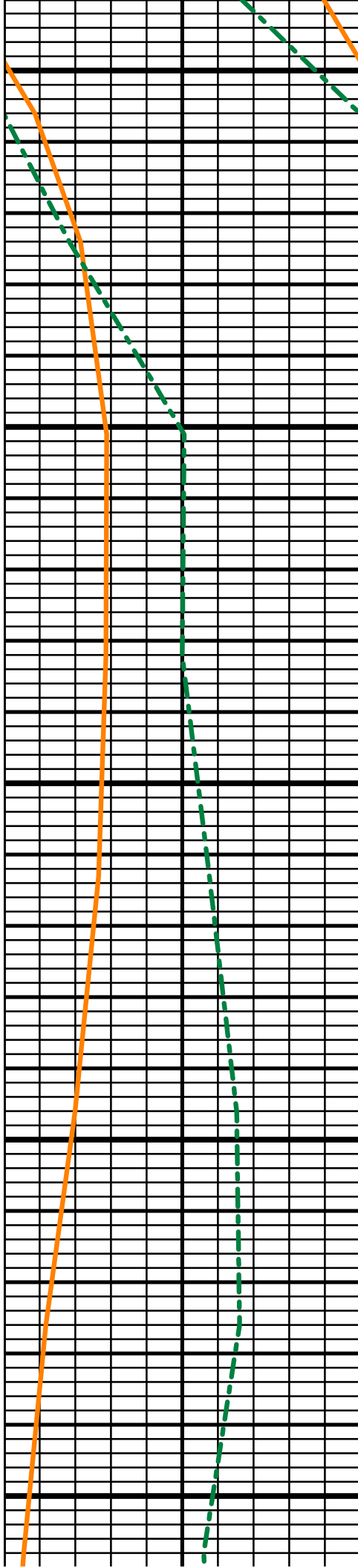
2000

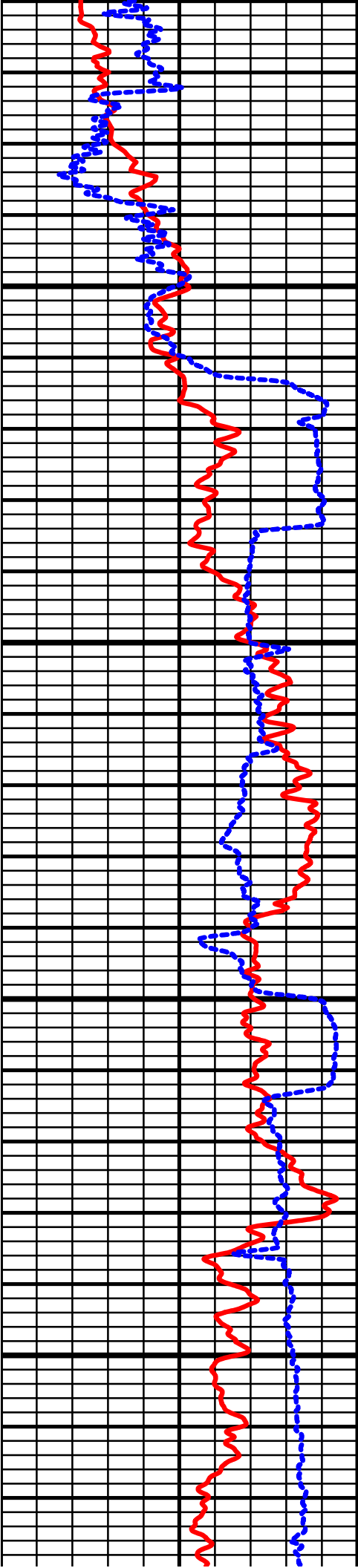
2050

2100

2150

2200



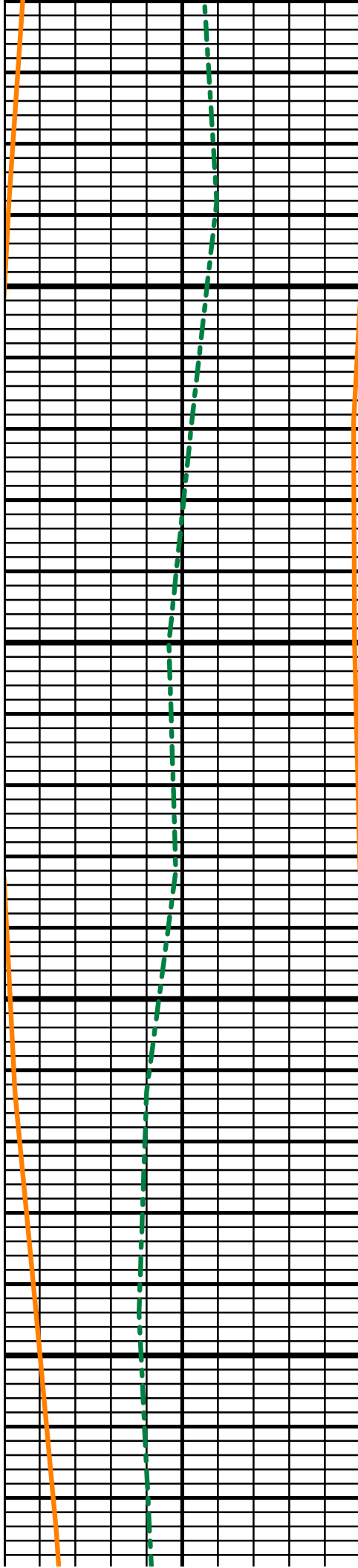


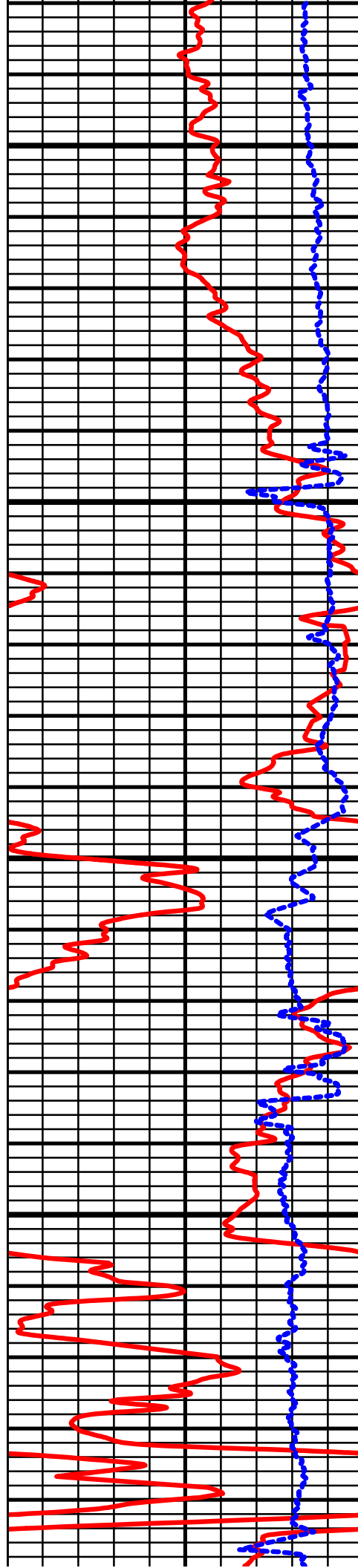
2250

2300

2350

2400



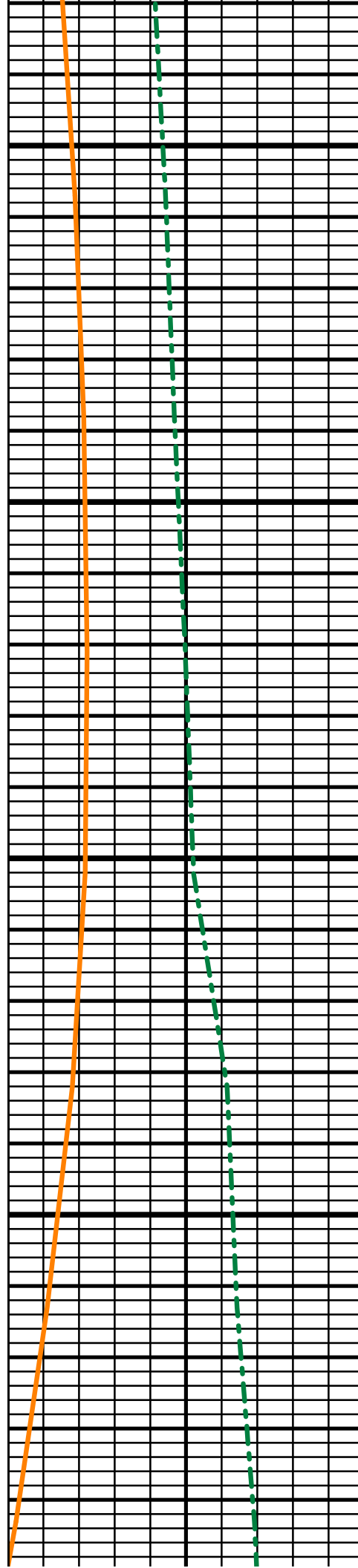


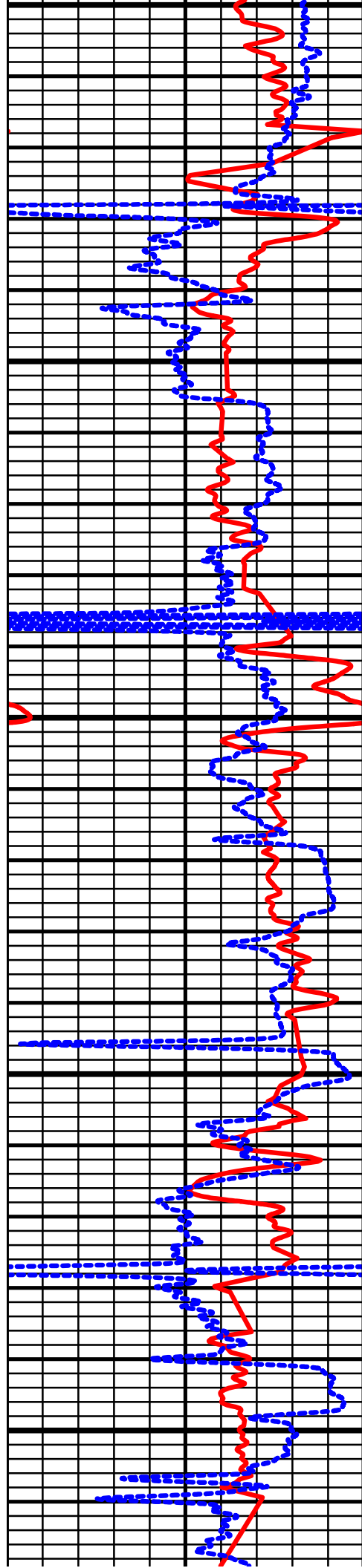
2450

2500

2550

2600





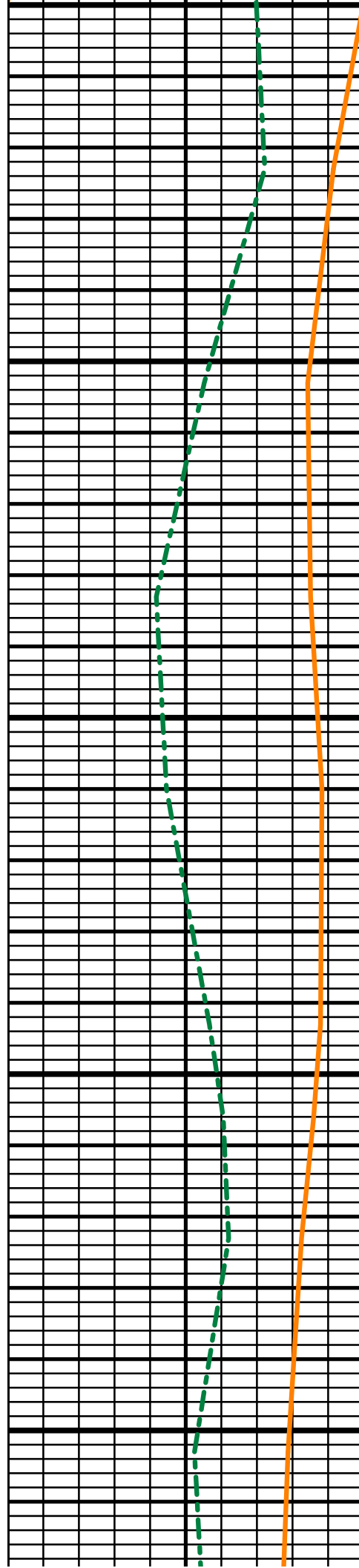
2650

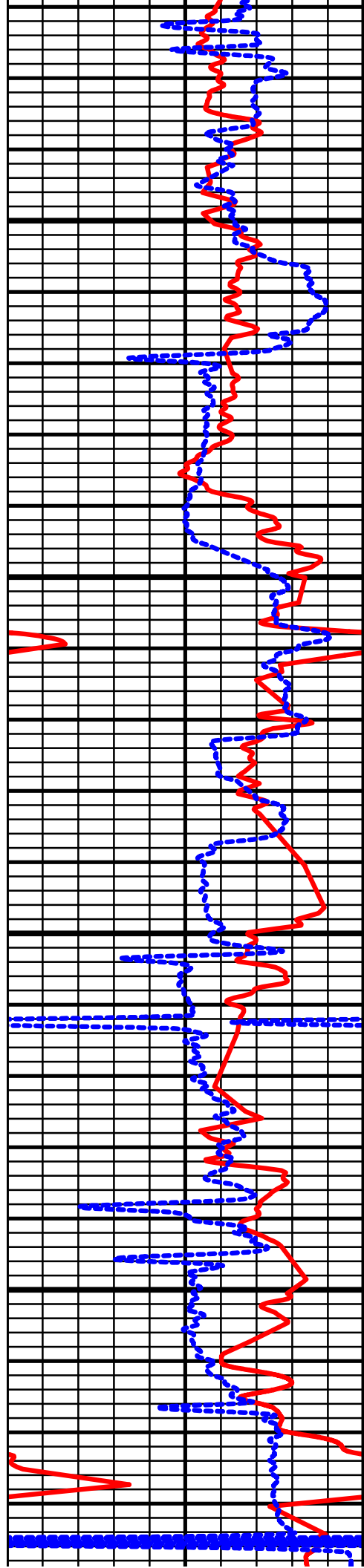
2700

2750

2800

2850



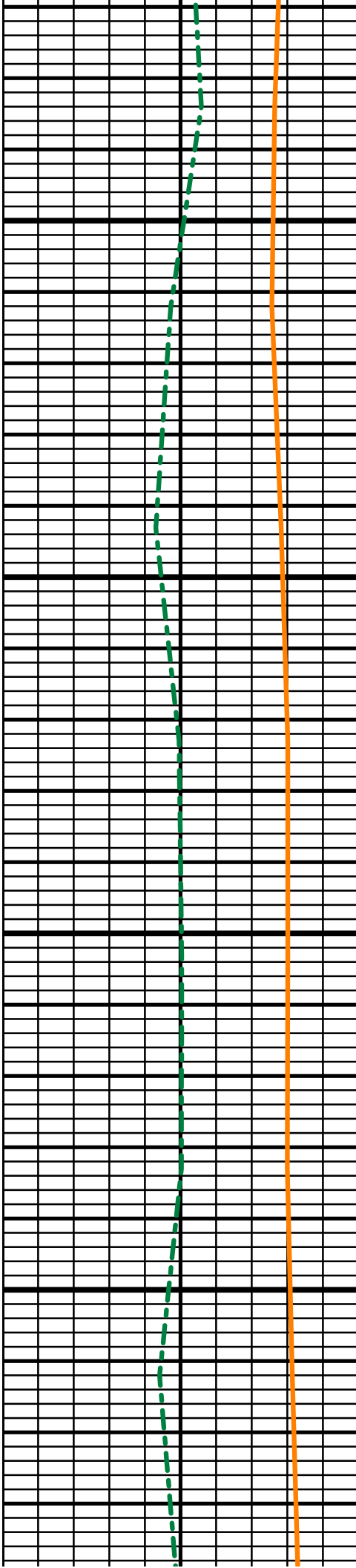


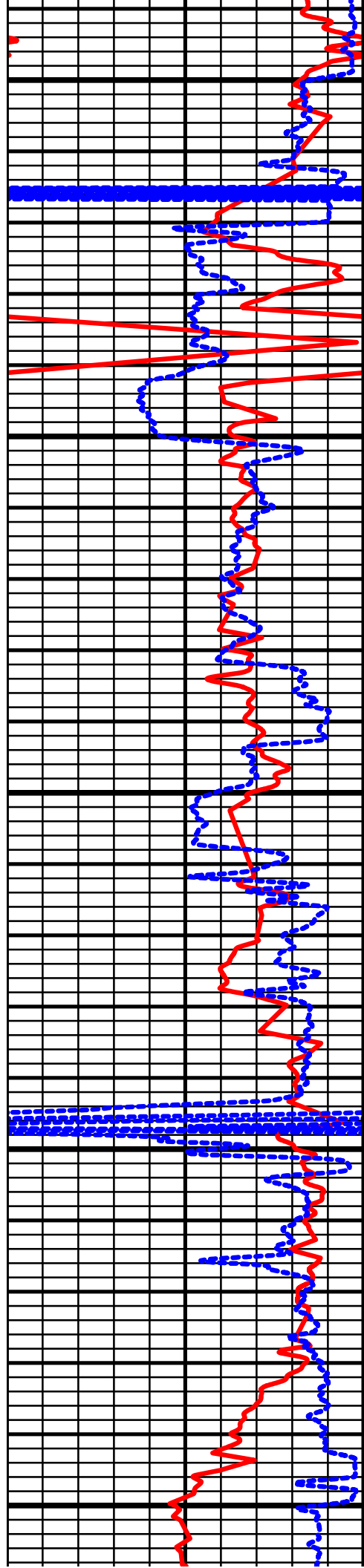
2900

2950

3000

3050





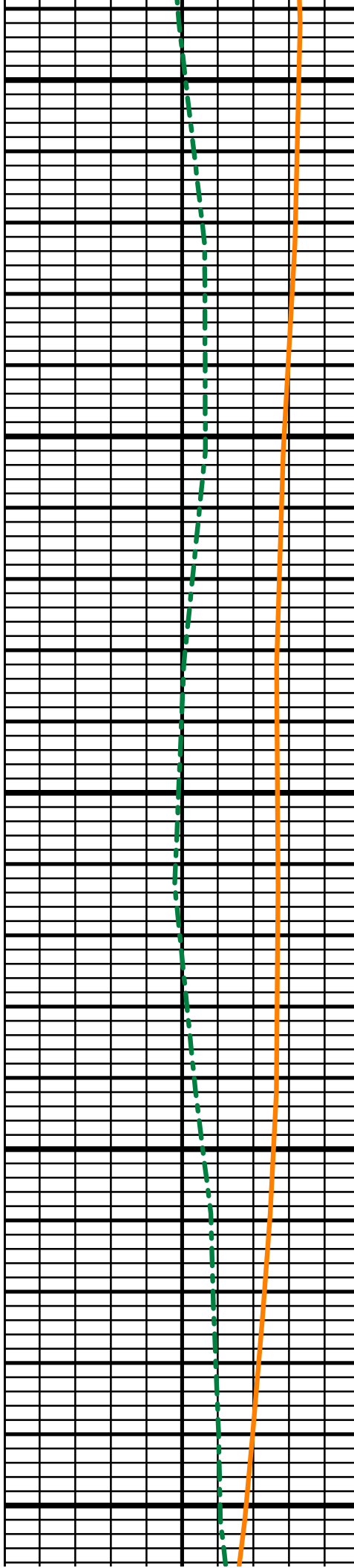
3100

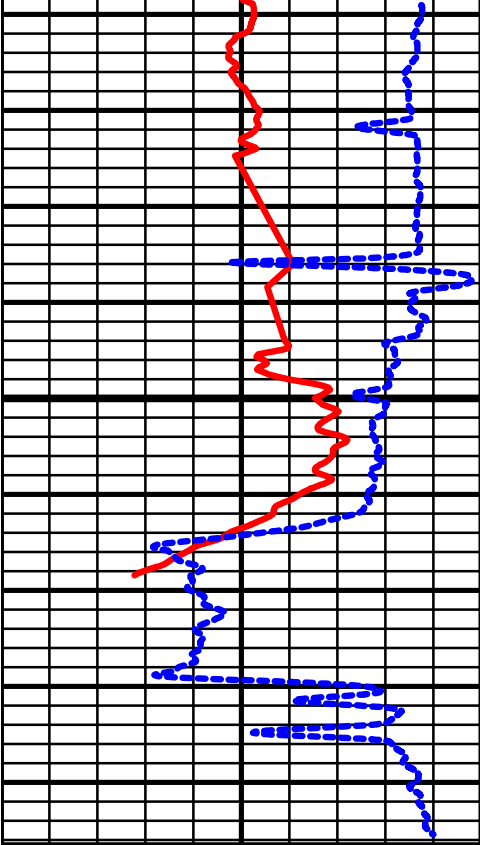
3150

3200

3250

3300

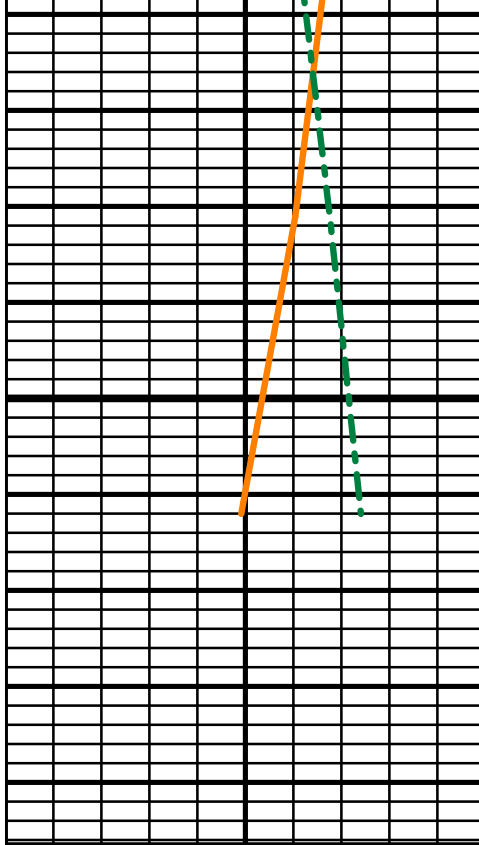




Gamma Counts (MWD) (api)
[0.00] ————— [150.00]
ROP (MWD) (ft/hr)
[100.00] - - - - - [0.00]

3350

MD
1:240 (ft)



True Vertical Depth of Survey from EL PASO C-69 RE-E...
[1920.00] ————— [1940.00]
Inclination of Survey from EL PASO C-69 RE-E...
[80.00] - - - - - [100.00]