

Patterson

**DUAL
INDUCTION
LOG**

Company XTO Energy Inc.		Company XTO Energy Inc.	
Well Golden Eagle 19-15		Well Golden Eagle 19-15	
Field Purgatoire River		Field Purgatoire River	
County Las Animas		County Las Animas	
State Colorado		State Colorado	
Location: API # : 05 071 08717 00		Other Services cdl neutron	
SEC 19 TWP 33S RGE 67W		Elevation	
Permanent Datum	Ground Level	Elevation	7220'
Log Measured From	Ground Level		
Drilling Measured From	Ground Level		
Date 03-12-06			
Run Number	One		
Depth Driller	1950'		
Depth Logger	1944'		
Bottom Logged Interval	1942'		
Top Log Interval	Surface Casing		
Casing Driller	8 5/8" @ 495'		
Casing Logger	495'		
Bit Size	7 7/8"		
Type Fluid in Hole	Water		
Density / Viscosity	///		
pH / Fluid Loss	///		
Source of Sample	///		
Rm @ Meas. Temp	///		
Rmf @ Meas. Temp	///		
Rmc @ Meas. Temp	///		
Source of Rmf / Rmc	///		
Rm @ BHT	///		
Time Circulation Stopped	11:30 a.m.		
Time Logger on Bottom	1:30 p.m.		
Maximum Recorded Temperature	106		
Equipment Number	T677		
Location	Trinidad		
Recorded By	L. Smith		
Witnessed By	Mr. Don Johnson		

>>> Fold Here >>>

All interpretations are opinions based on inferences from electrical or other measurements and we cannot and do not guarantee the accuracy or correctness of any interpretation, and we shall not, except in the case of gross or willful negligence on our part, be liable or responsible for any loss, costs, damages, or expenses incurred or sustained by anyone resulting from any interpretation made by any of our officers, agents or employees. These interpretations are also subject to our general terms and conditions set out in our current Price Schedule.

Comments

4 miles past Weston to Bosque entrance go.2 miles and turn right
on old rail track, go 1 mile first location on right.

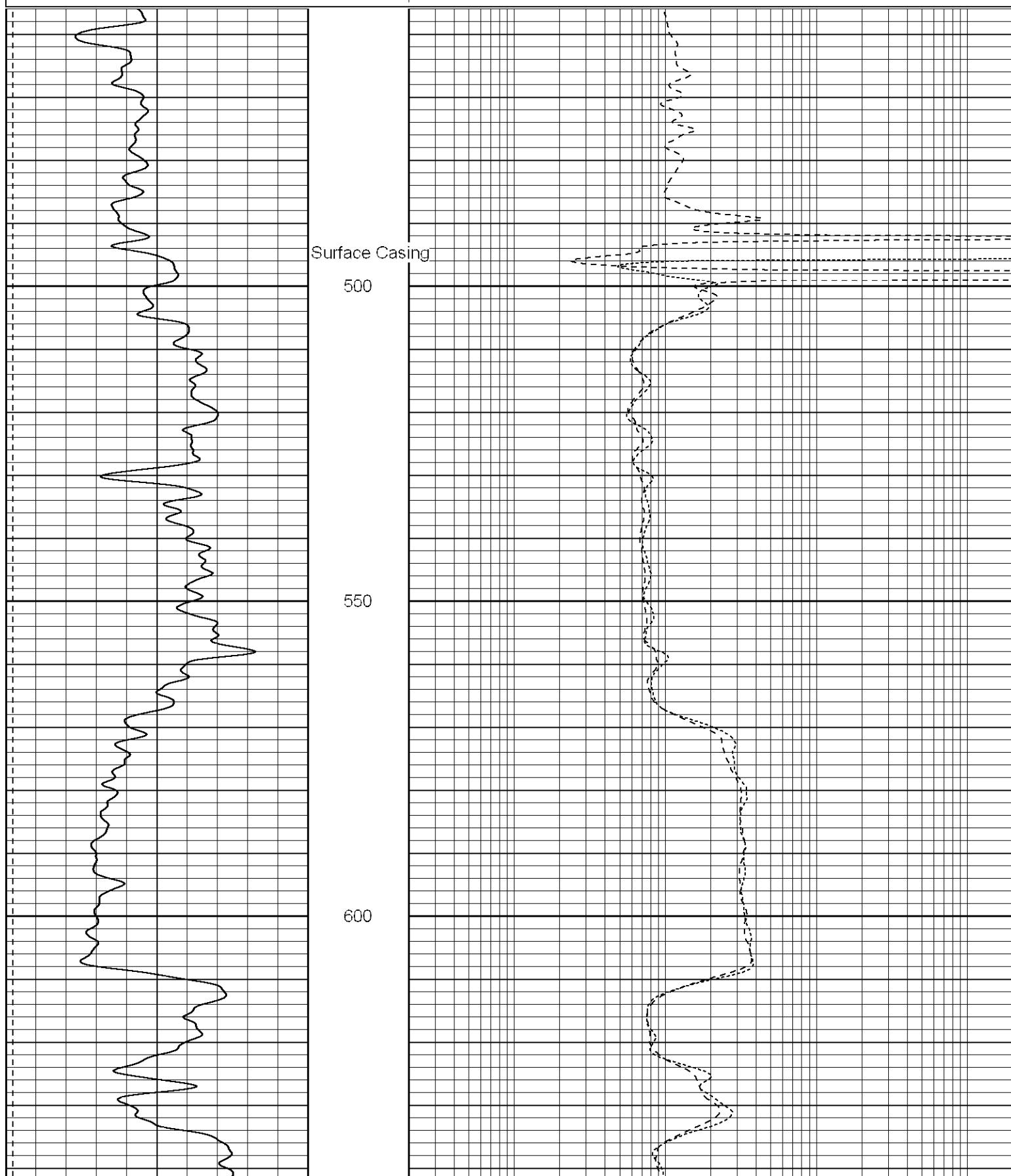
Patterson

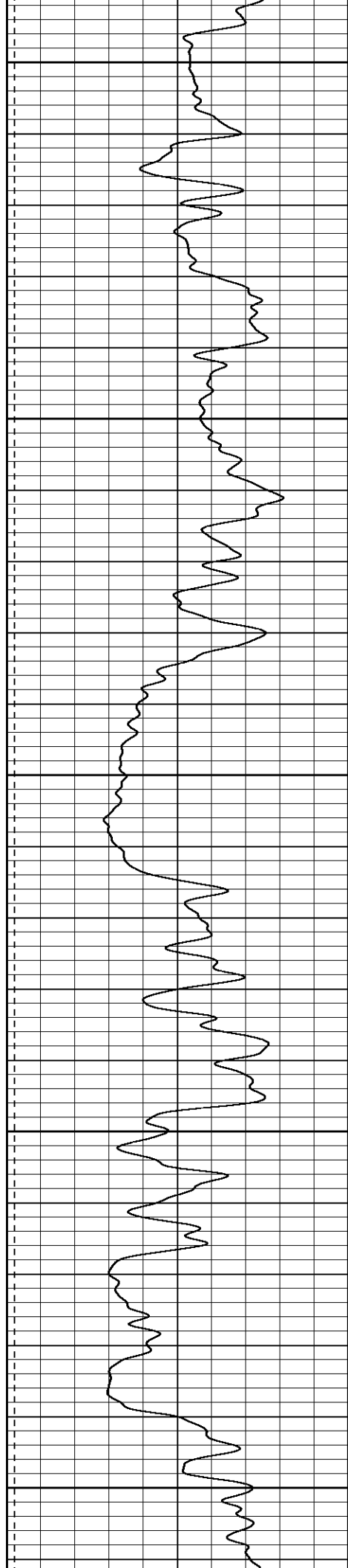
Main Pass

Database File: xtoge1915.db
Dataset Pathname: pass2.1
Presentation Format: dil
Dataset Creation: Sun Mar 12 15:00:51 2006 by Calc Warrior 7.0 STD Ope
Charted by: Depth in Feet scaled 1:240

0	GR (GAPI)	200
-200	SP (mV)	0

0.2	RILD (Ohm-m)	2000
0.2	RILM (Ohm-m)	2000
0.2	RLL3 (Ohm-m)	2000





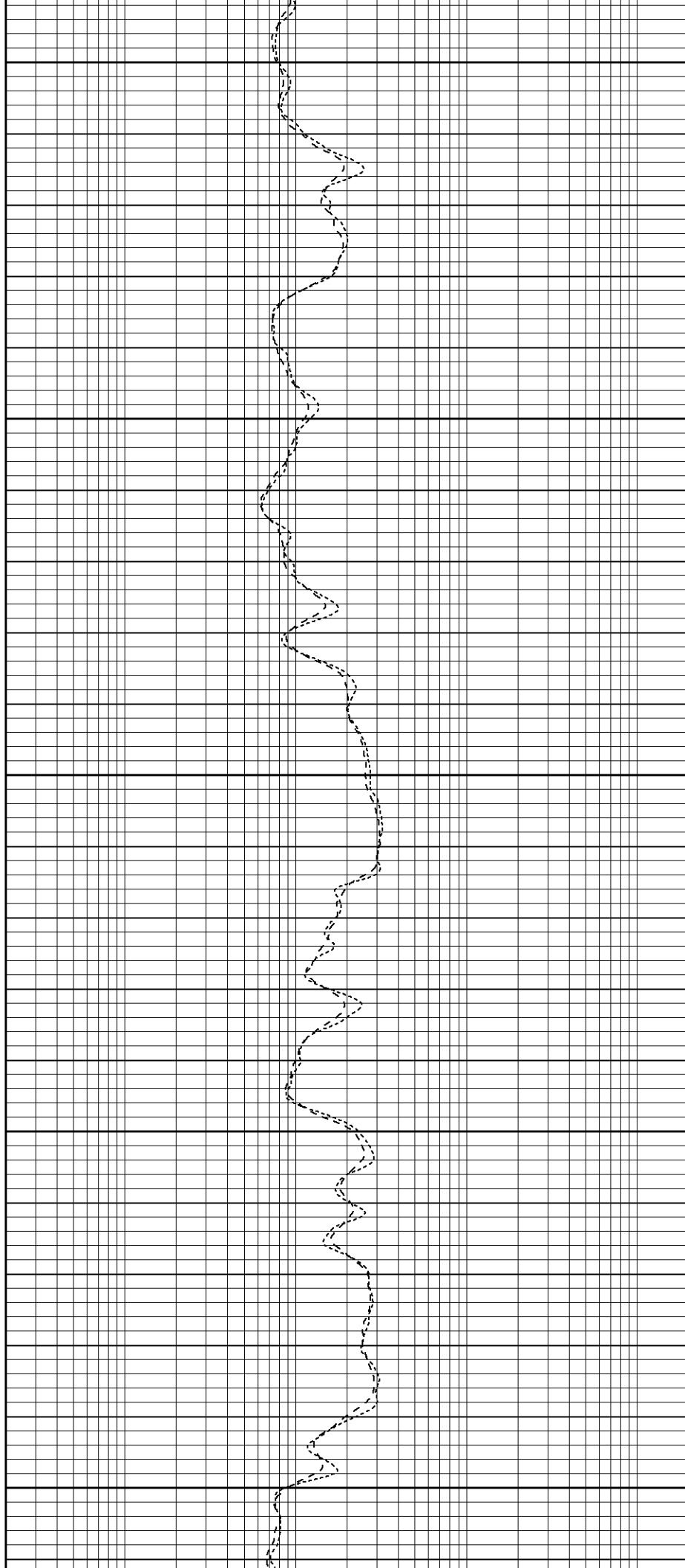
650

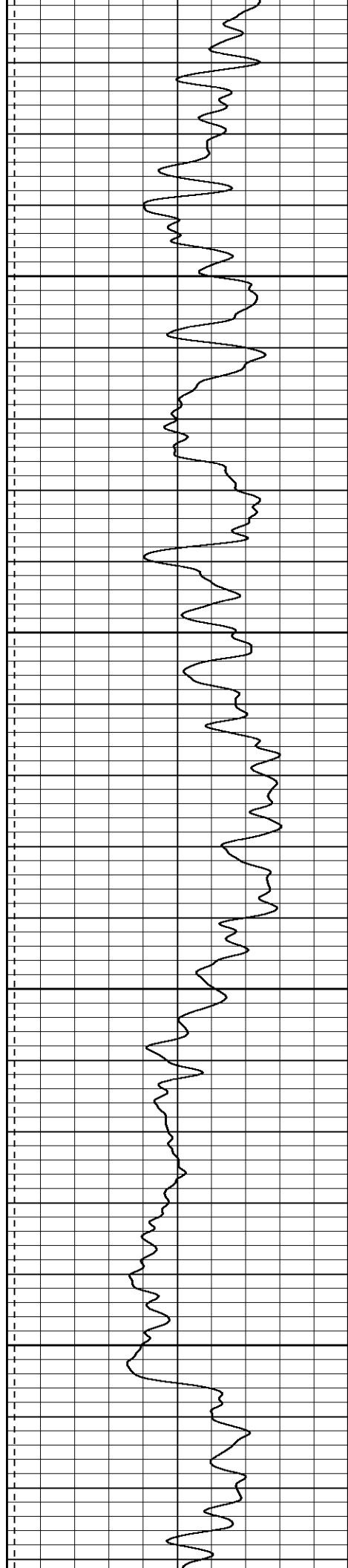
700

750

800

850



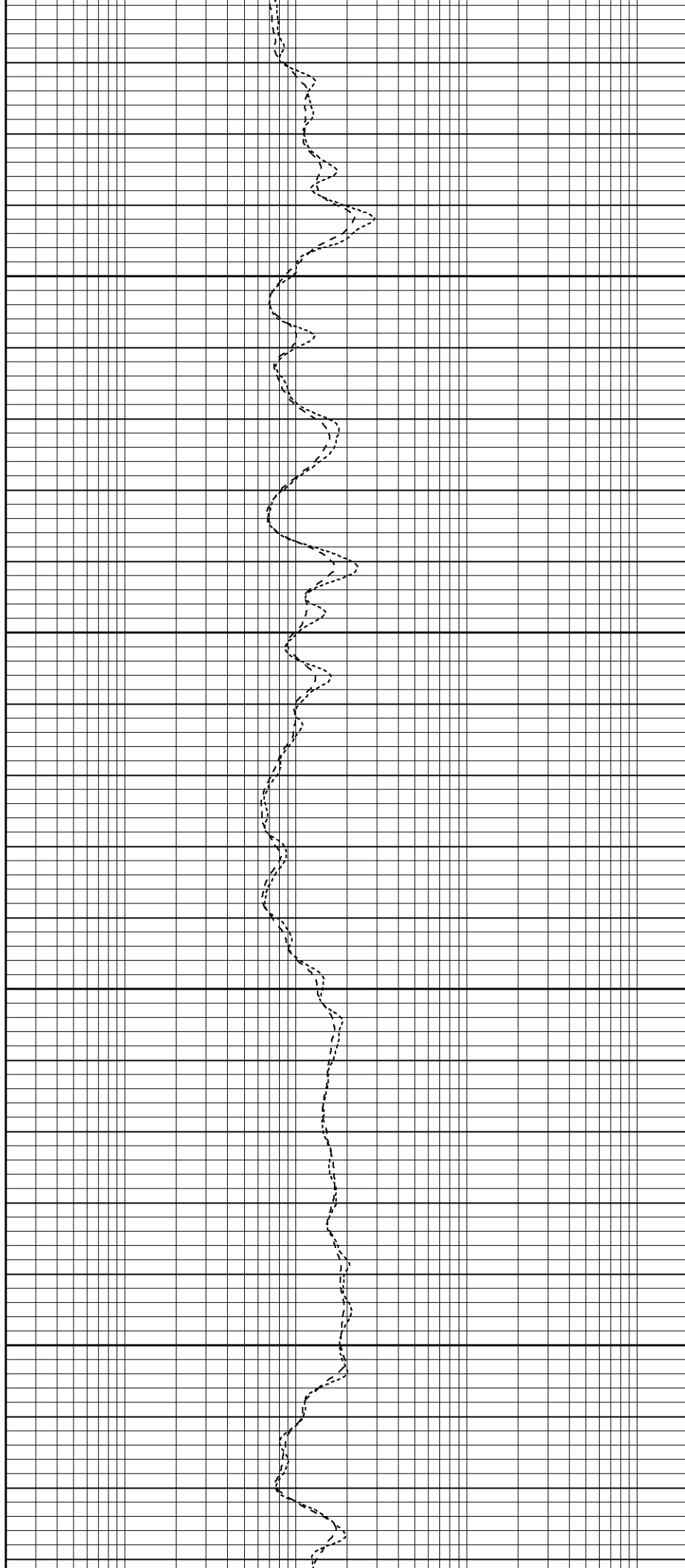


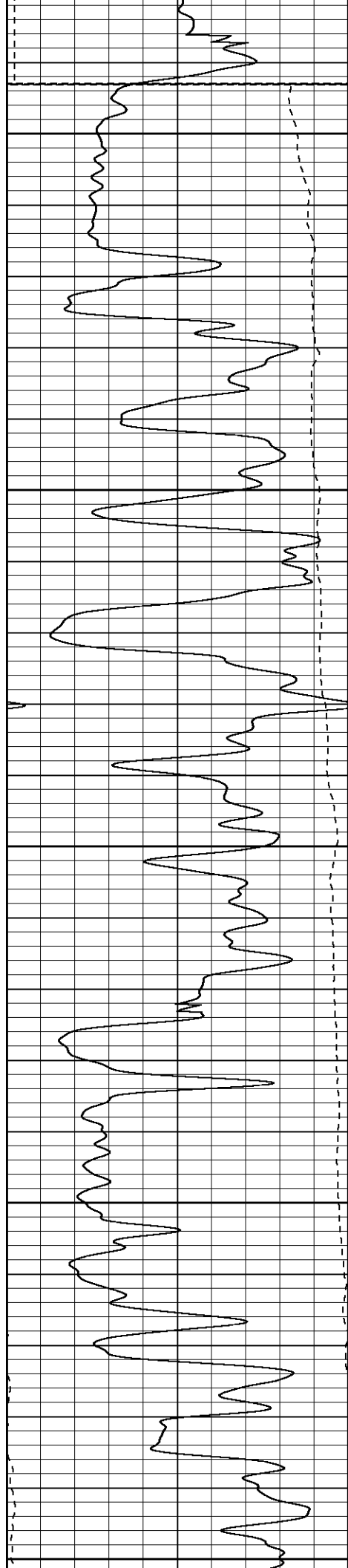
900

950

1000

1050





Air

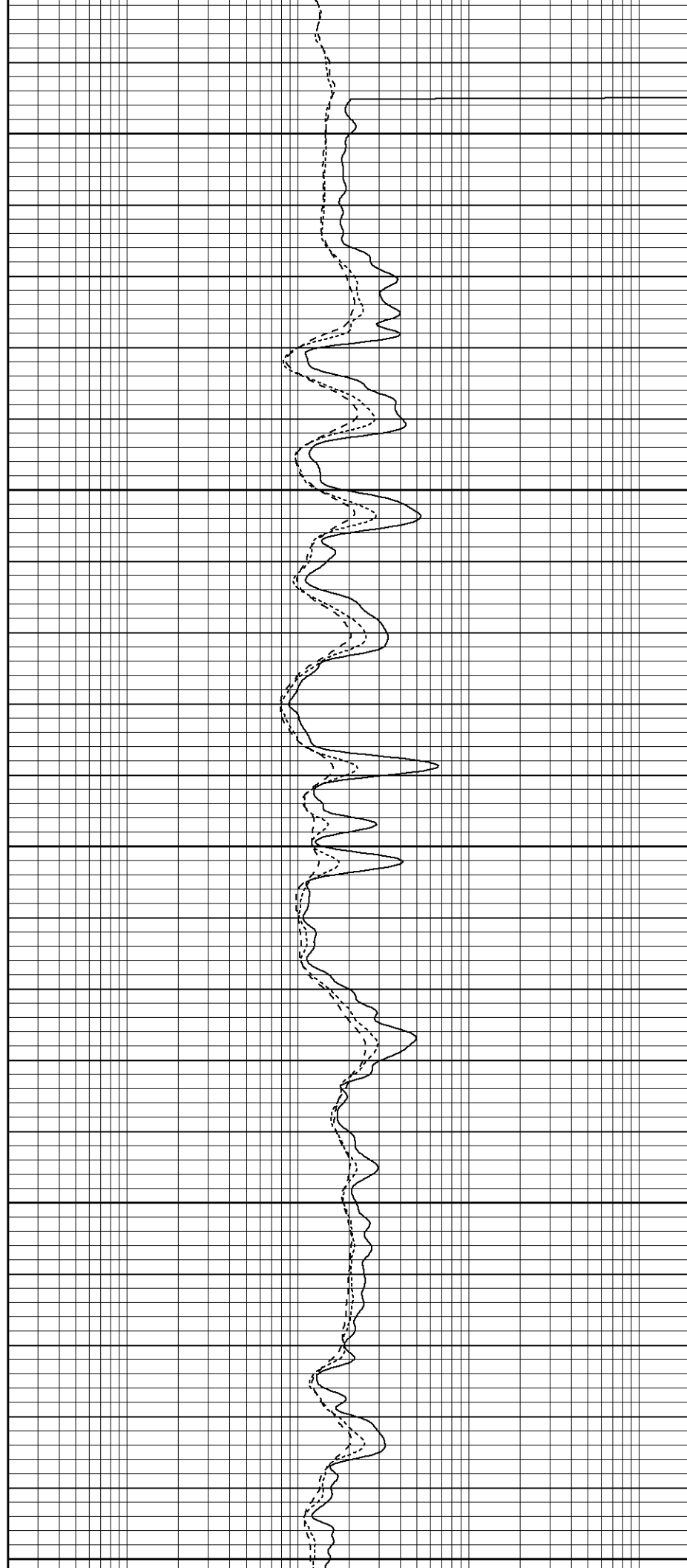
1100

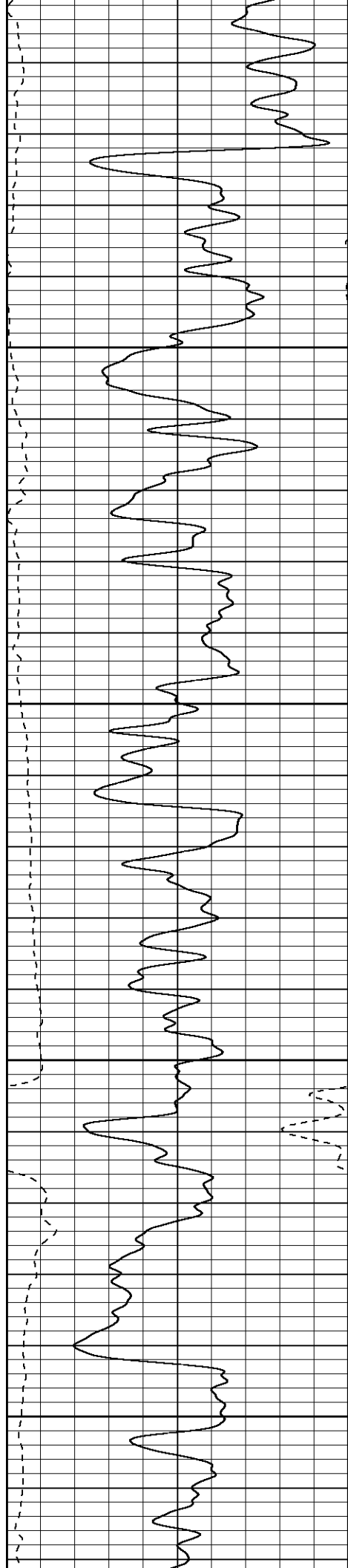
1150

1200

1250

1300





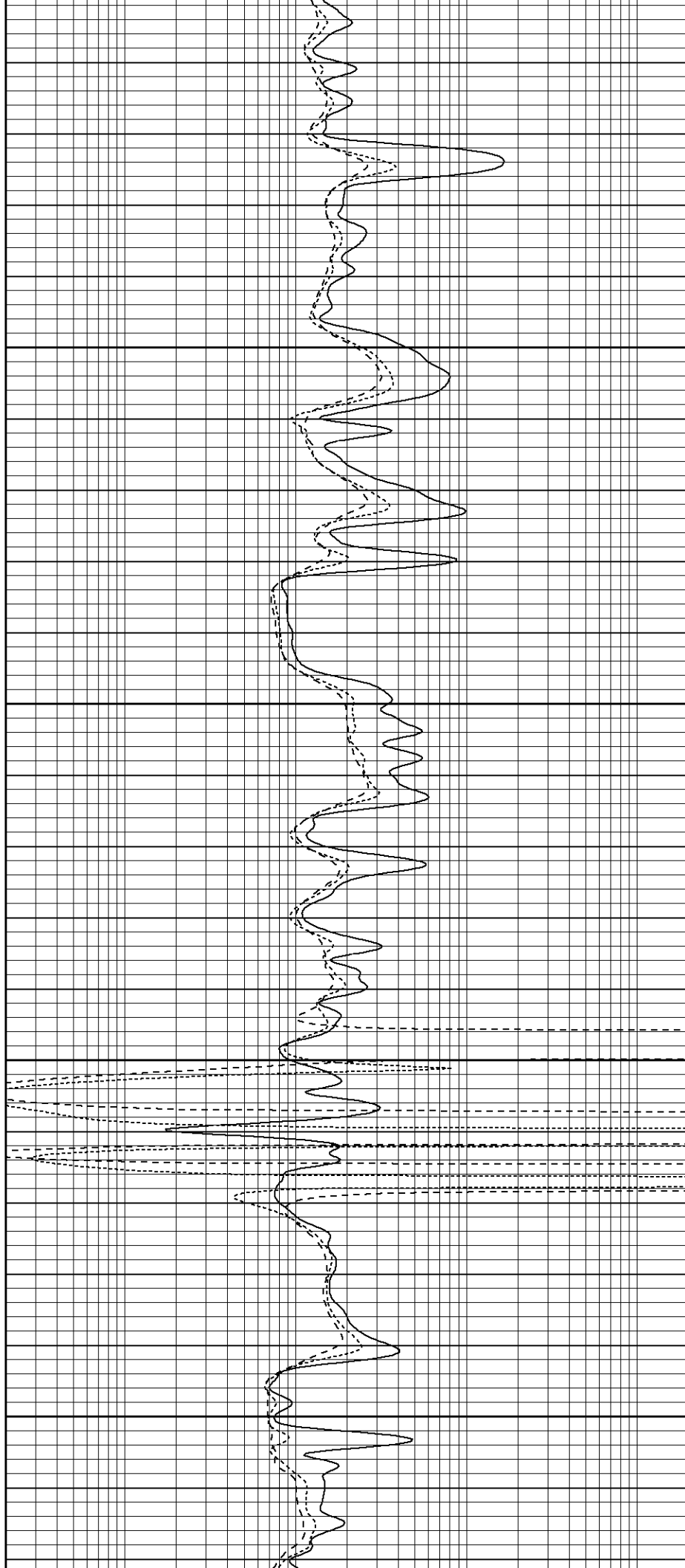
Foam

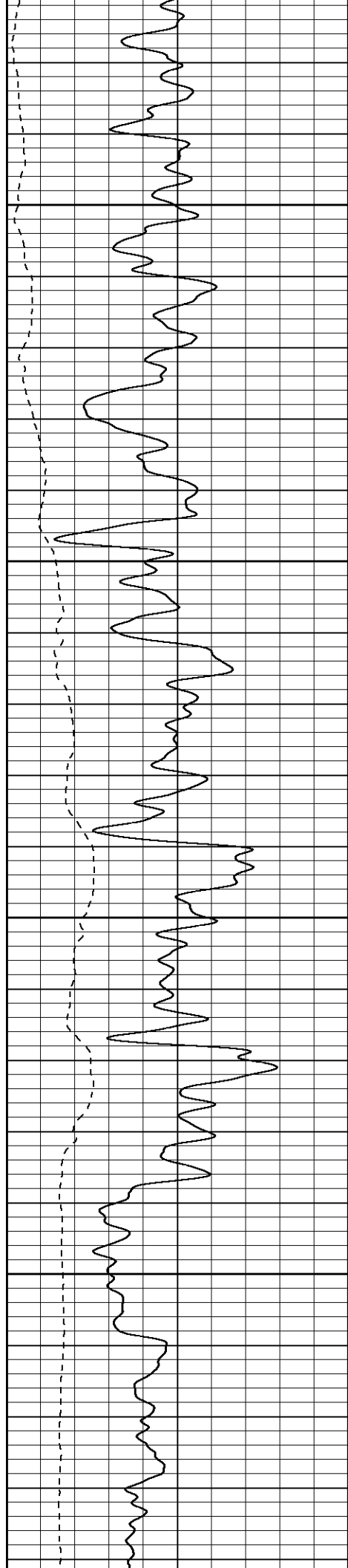
1350

1400

1450

1500



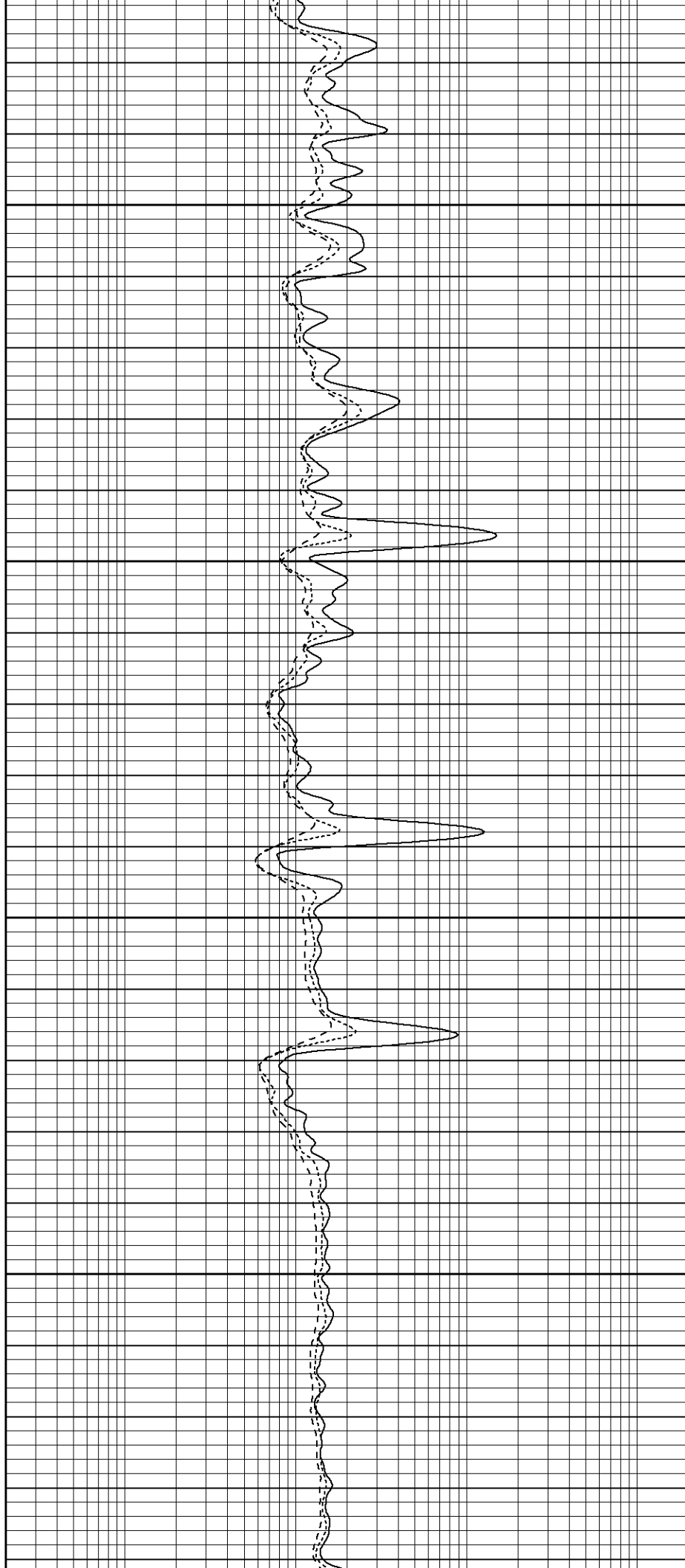


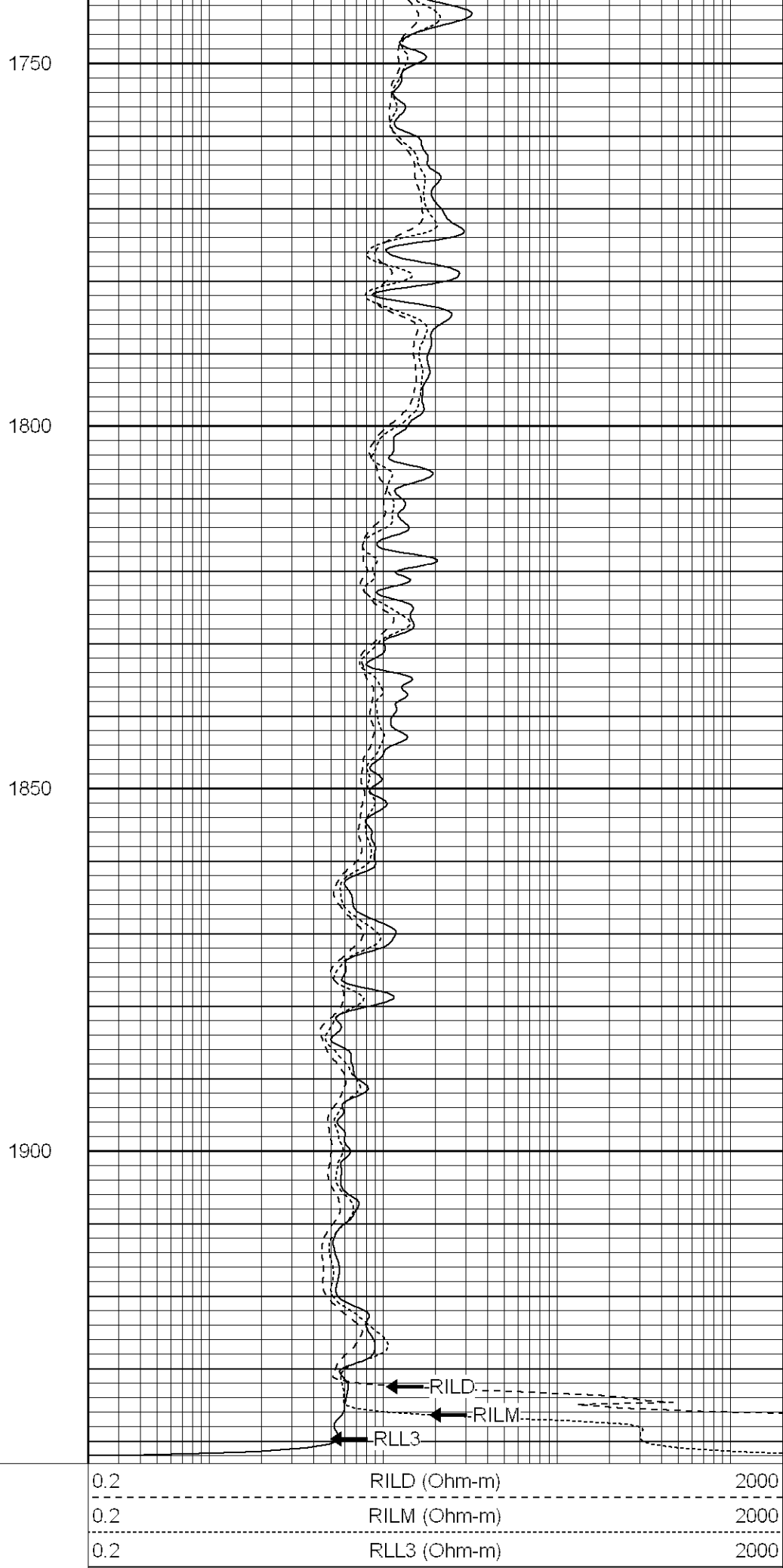
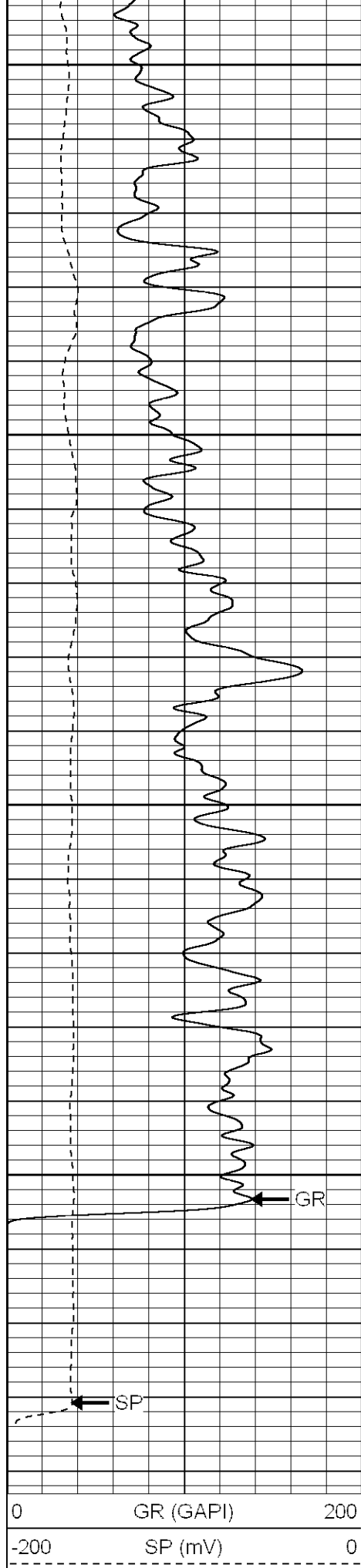
1550

1600

1650

1700

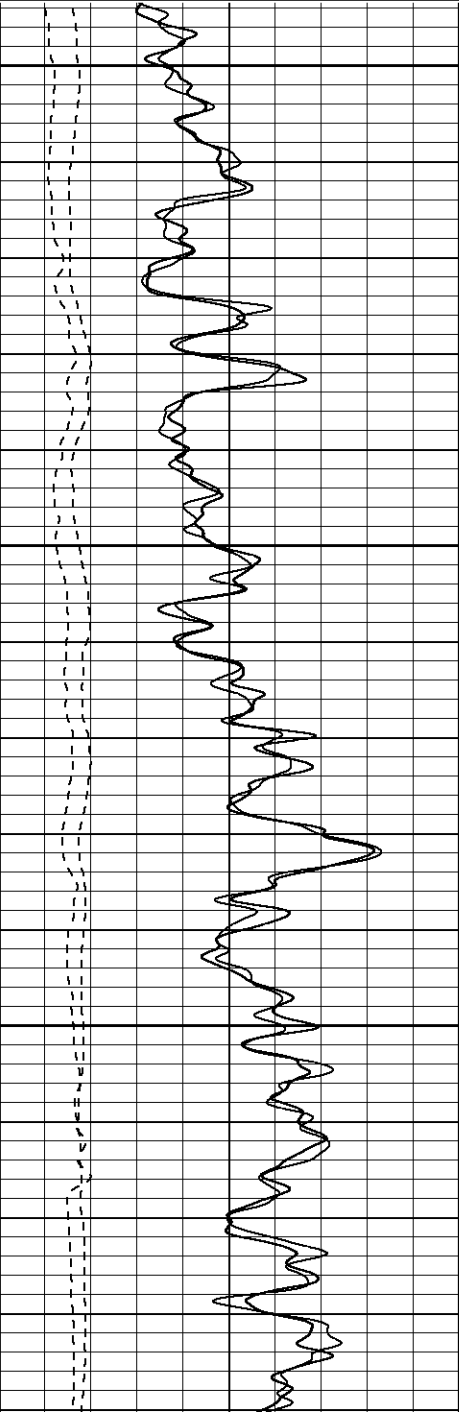




Database File: xtoge1915.db
Dataset Pathname: pass1.1
Presentation Format: dil
Dataset Creation: Sun Mar 12 13:57:18 2006 by Calc Warrior 7.0 STD Ope
Charted by: Depth in Feet scaled 1:240

0	GR (GAPI)	200
-200	SP (mV)	0
0	GR-repeat (GAPI)	200
-200	SP-repeat (mV)	0

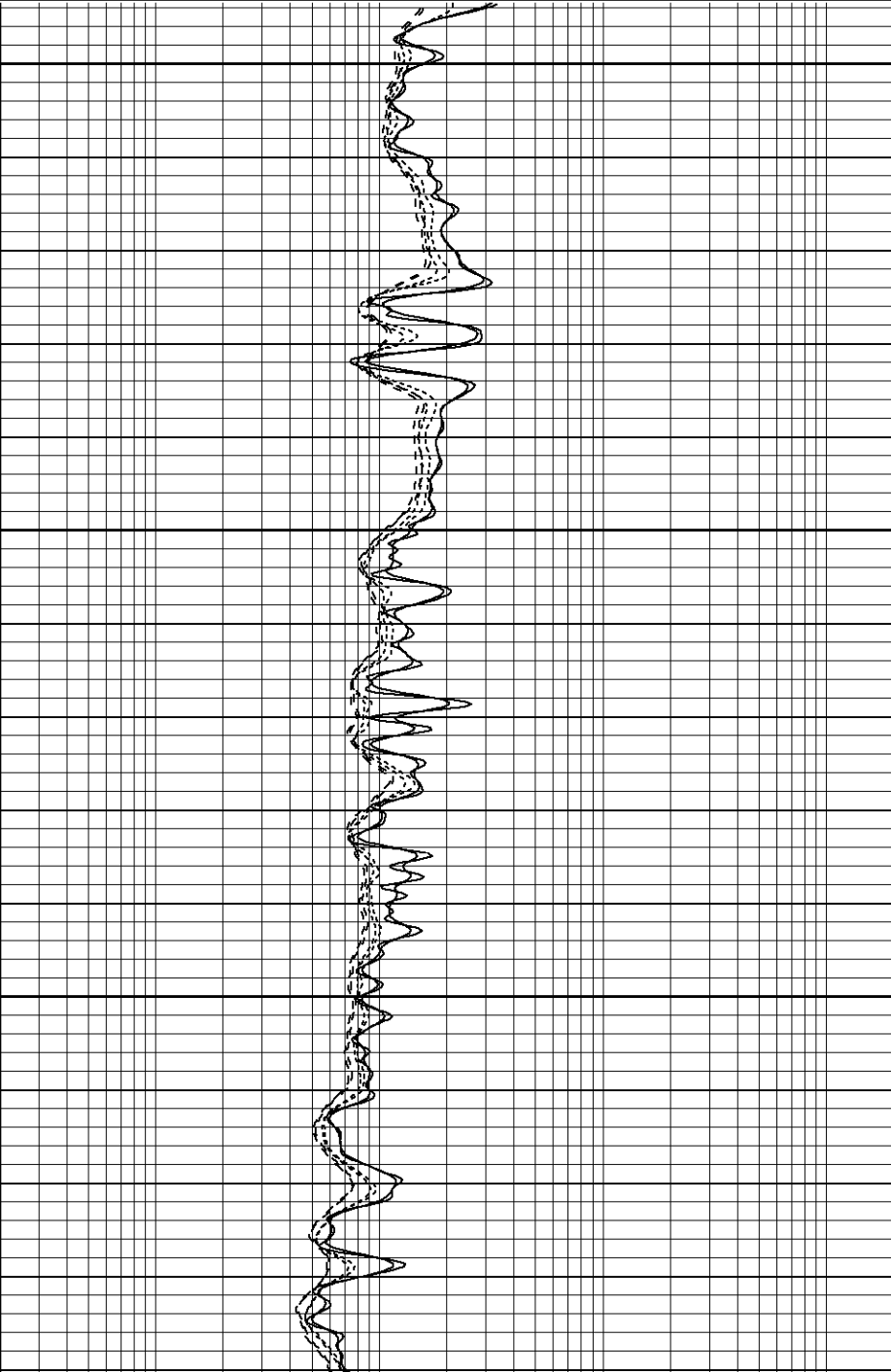
0.2	RILD (Ohm-m)	2000
0.2	RILM (Ohm-m)	2000
0.2	RLL3 (Ohm-m)	2000
0.2	RLL3-repeat (Ohm-m)	2000
0.2	RILM-repeat (Ohm-m)	2000
0.2	RILD-repeat (Ohm-m)	2000

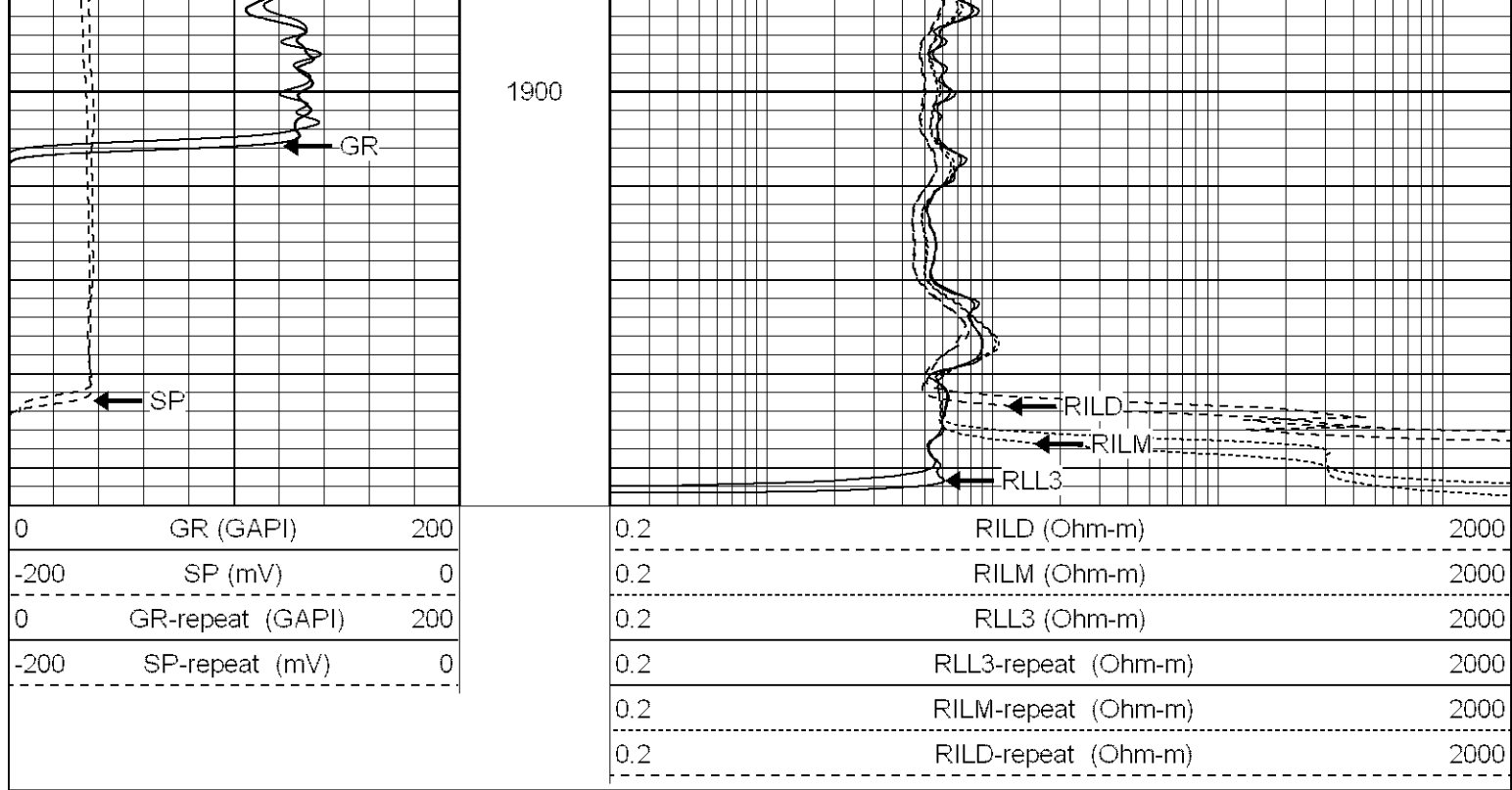


1750

1800

1850





Dual Induction Calibration Report

Serial-Model: 5375-G
 Surface Cal Performed: Mon Mar 06 14:14:03 2006
 Downhole Cal Performed: Wed Mar 08 20:15:55 2006

Compensated Density Calibration Report

Serial-Model: 902-2.75POH
 Source / Verifier: /
 Master Calibration Performed: Mon Mar 06 14:12:48 2006

Master Calibration

	Density		Far Detector	Near Detector	
Magnesium	1.710	g/cc	937.76	456.53	cps
Aluminum	2.590	g/cc	165.85	225.46	cps
Spine Angle = 67.84			Density/Spine Ratio = 0.470		
	Size		Reading		
Small Ring	8.55	in	2.31	V	
Large Ring	17.00	in	4.47	V	

Neutron Calibration Report

Serial Number: 802
 Tool Model: 2.75POH
 Performed: Fri Mar 10 09:45:35 2006

Calibrator Value: 1 NAPI

Calibrator Reading: 1 cps

Sensitivity: 1 NAPI/cps

Gamma Ray Calibration Report

Serial Number: 804
 Tool Model: 2.75POH
 Performed: Tue Feb 28 13:45:51 2006

 Calibrator Value: 1.0 GAPI

 Background Reading: 0.0 cps
 Calibrator Reading: 1.0 cps

 Sensitivity: 0.8000 GAPI/cps

Sensor	Offset (ft)	Schematic	Description	Len (ft)	OD (in)	Wt (lb)
CHD	39.37		None	0.75	1.50	5.00
GR	37.64		GR-2.75POH (804) Probe	3.73	2.75	43.00
NEU	32.10		NEU-2.75POH (802) Probe Epithermal	4.75	2.75	58.00
LSD	24.47		CDL-2.75POH (902) Probe	8.43	2.75	106.00
DCAL	24.19		Probe	0.89	3.50	20.00
SSD	23.95					
10pin	21.72					
CILD	10.60		DIL-G (5375) Gearhart	20.83	4.00	345.00
SP	10.60					
CILM	6.89					
RLL3	1.70					

Dataset: /field/well/run1/_plots/_jobs/i
 Total Length: 39.37 ft
 Total Weight: 577.00 lb

O.D. 4.00 in