

Patterson

**DUAL
INDUCTION
LOG**

Company XTO Energy, Inc.		Company XTO Energy, Inc.	
Well Apache Canyon 06-02		Well Apache Canyon 06-02	
Field Purgatoire River		Field Purgatoire River	
County Las Animas		County Las Animas	
State CO		State CO	
Location:		API # : 05 071 08789 00	Other Services CDL NEUTRON
SEC 06 TWP 34S RGE 67W		Elevation	
Permanent Datum	Ground Level	Elevation	8149'
Log Measured From	Ground Level	K.B. ----- D.F. ----- G.L. 8149'	
Drilling Measured From	Ground Level		
Date	7-23-06		
Run Number	One		
Depth Driller	2665'		
Depth Logger	2668'		
Bottom Logged Interval	2666'		
Top Log Interval	Surface Casing		
Casing Driller	8 5/8" @ 618'		
Casing Logger	620'		
Bit Size	7 7/8"		
Type Fluid in Hole	Water		
Density / Viscosity	///		
pH / Fluid Loss	///		
Source of Sample	///		
Rm @ Meas. Temp	///		
Rmf @ Meas. Temp	///		
Rmc @ Meas. Temp	///		
Source of Rmf / Rmc	///		
Rm @ BHT	///		
Time Circulation Stopped	1:00 A.M.		
Time Logger on Bottom	3:45 A.M.		
Maximum Recorded Temperature	114 DEG F		
Equipment Number	T720		
Location	Trinidad		
Recorded By	M. Norton		
Witnessed By	Mr. Don Johnson		

<<< Fold Here >>>

All interpretations are opinions based on inferences from electrical or other measurements and we cannot and do not guarantee the accuracy or correctness of any interpretation, and we shall not, except in the case of gross or willful negligence on our part, be liable or responsible for any loss, costs, damages, or expenses incurred or sustained by anyone resulting from any interpretation made by any of our officers, agents or employees. These interpretations are also subject to our general terms and conditions set out in our current Price Schedule.

Comments

Well Directions:
First Bosque entrance, right on Cherry Canyon, at first Y stay left, thru two gates, stay on main road at top of hill at T stay left, drive thru location at T stay right first location.

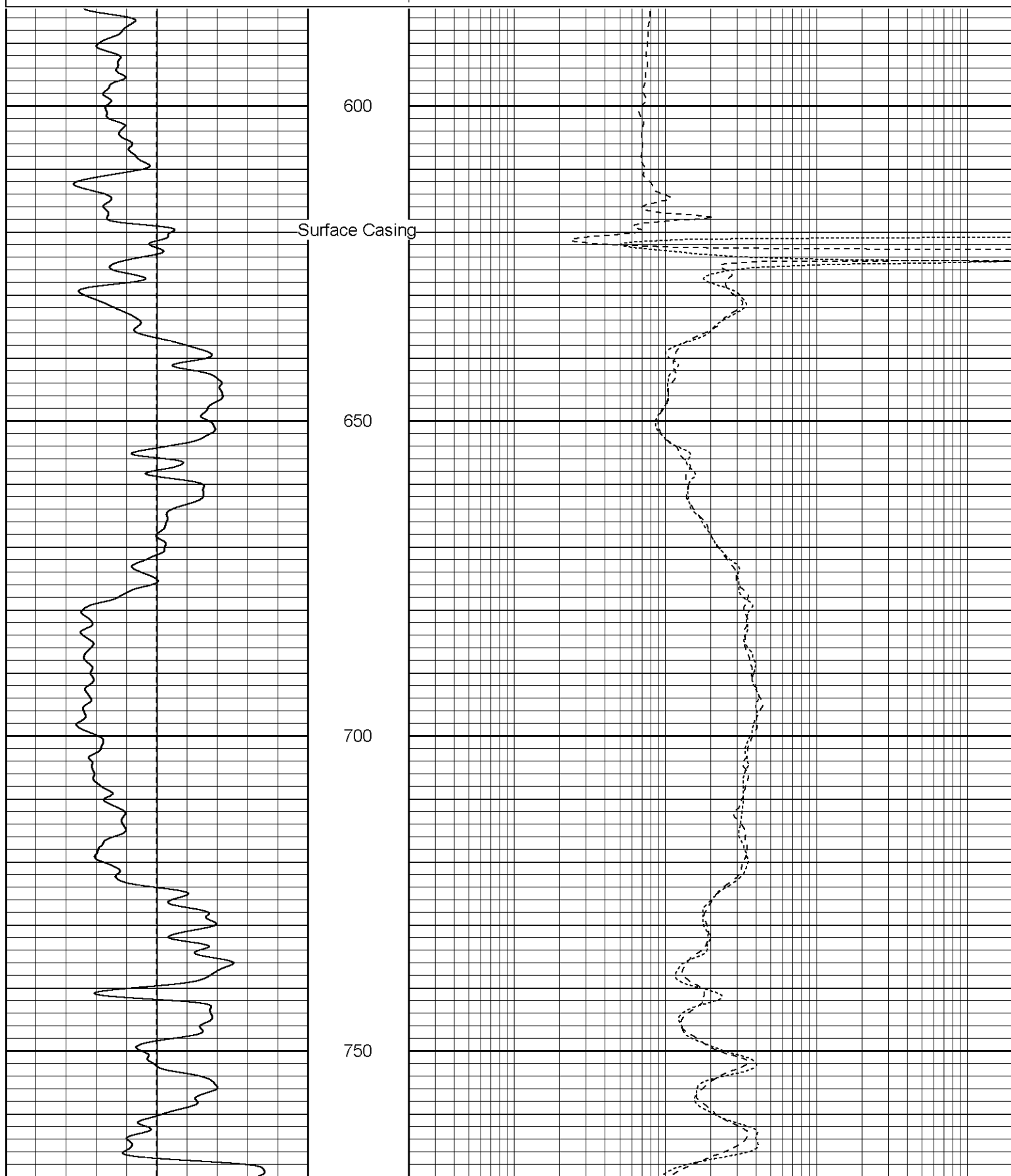
Patterson

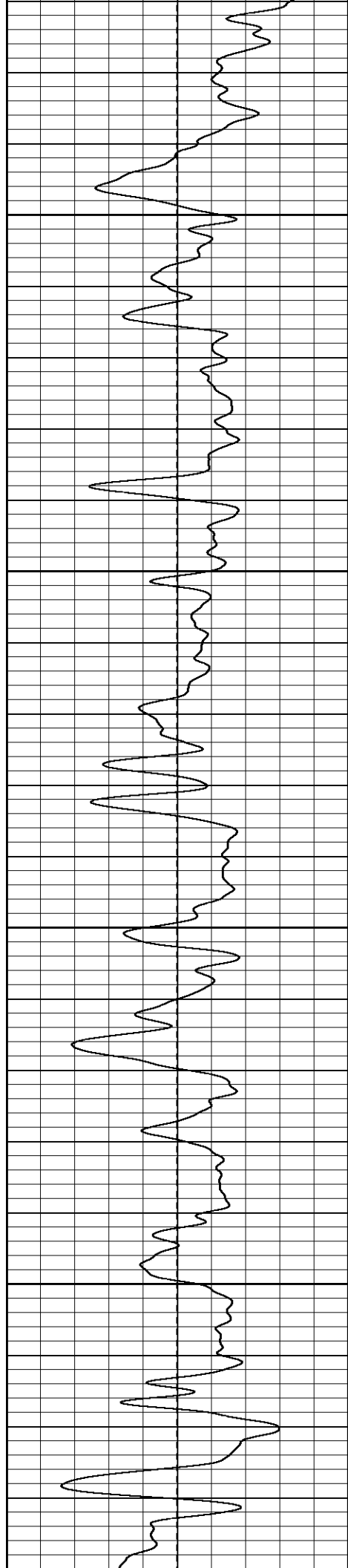
Main Pass

Database File: xtoac0602.db
Dataset Pathname: pass2.1
Presentation Format: dil
Dataset Creation: Sun Jul 23 06:16:44 2006 by Calc Warrior 7.0 STD Ope
Charted by: Depth in Feet scaled 1:240

0	GR (GAPI)	200
-100	SP (mV)	100

0.2	RILM (Ohm-m)	2000
0.2	RILD (Ohm-m)	2000
0.2	RLL3 (Ohm-m)	2000



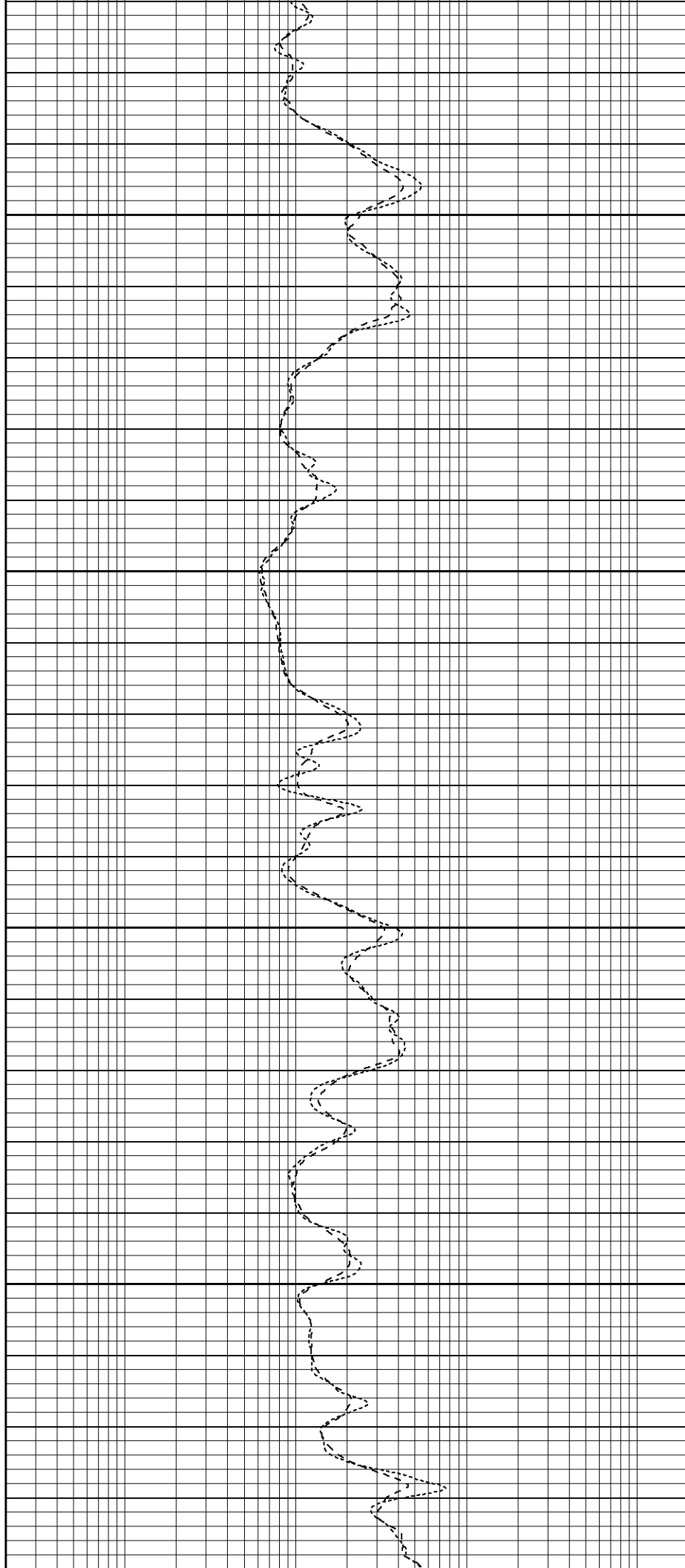


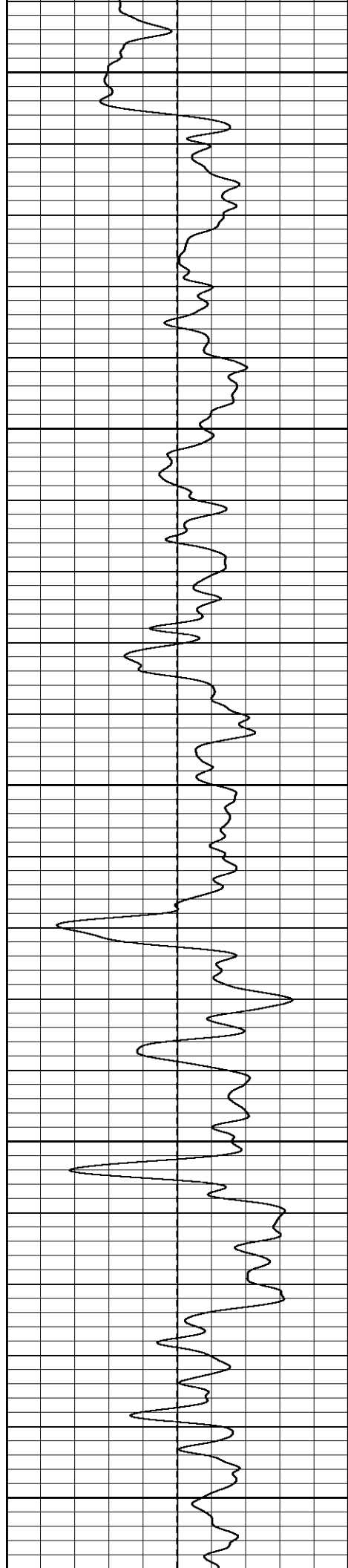
800

850

900

950





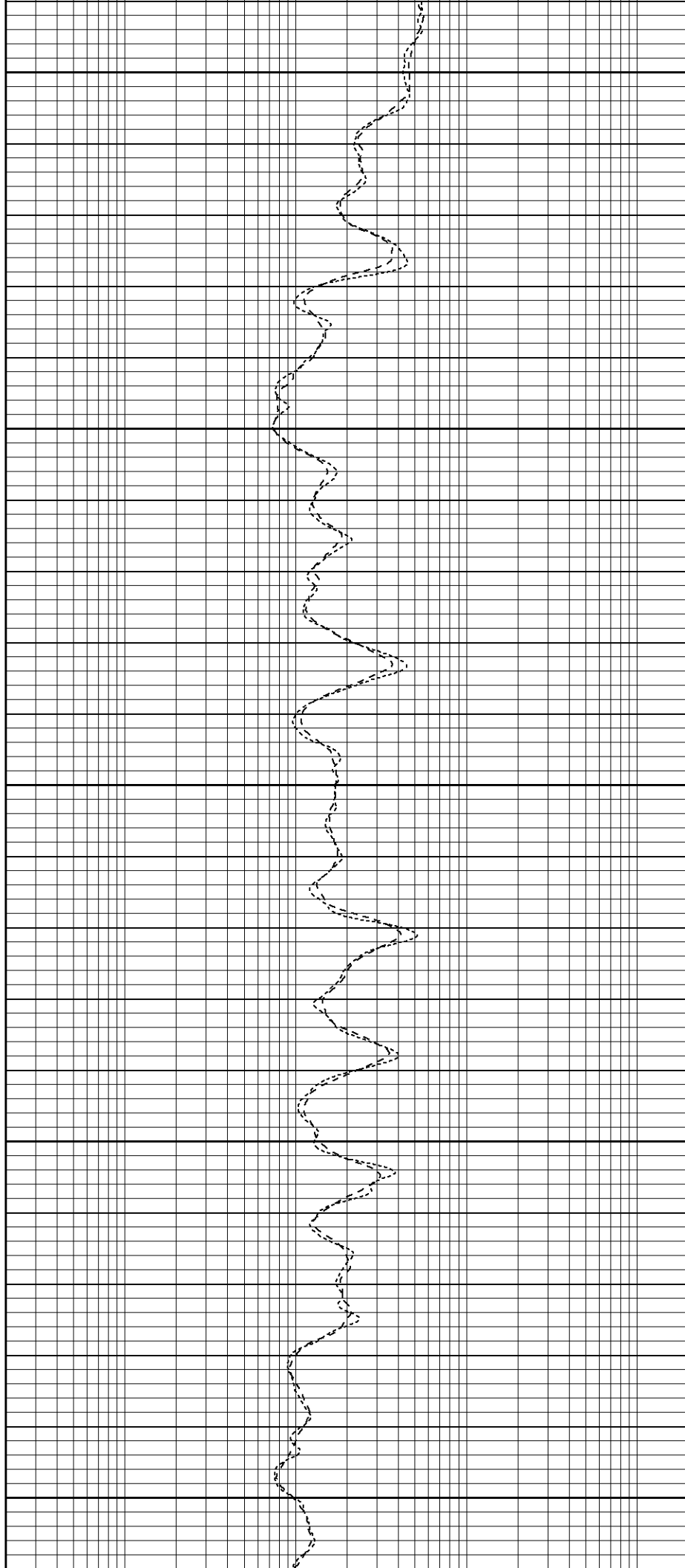
1000

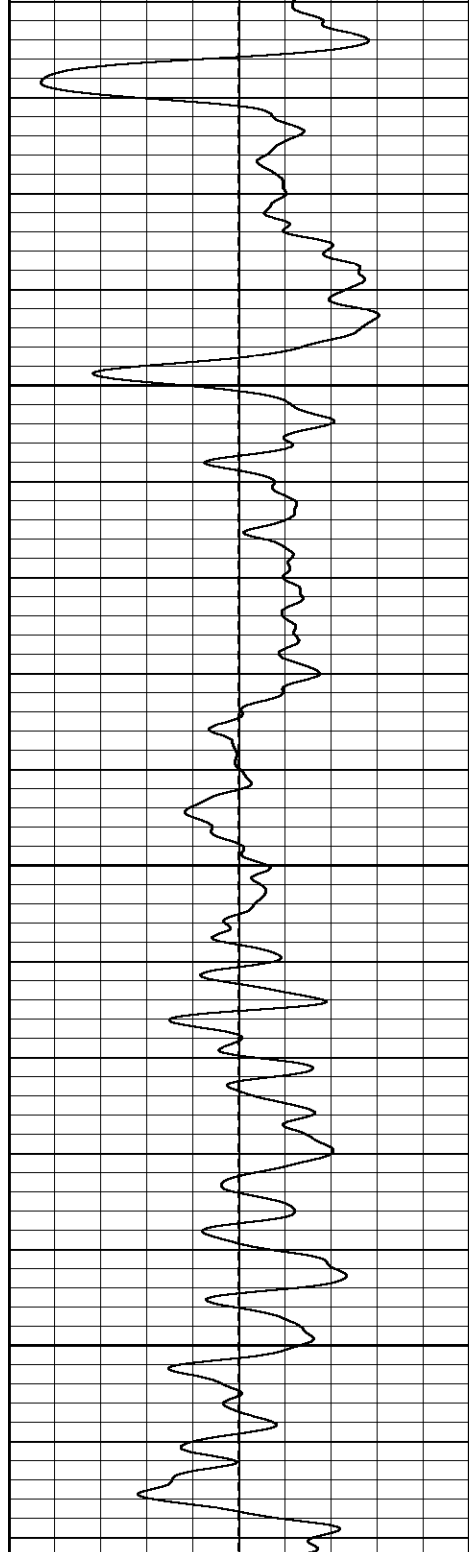
1050

1100

1150

1200

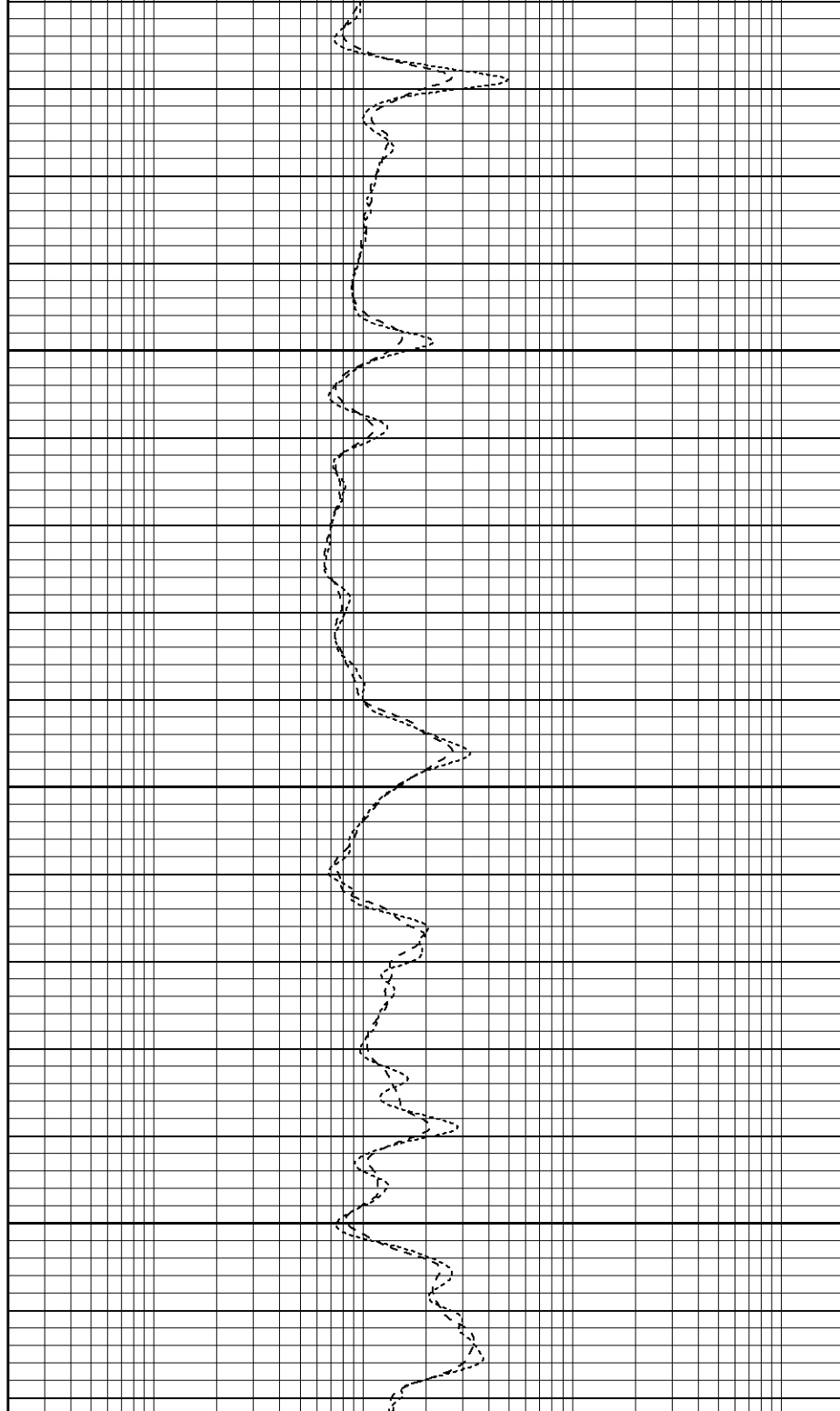


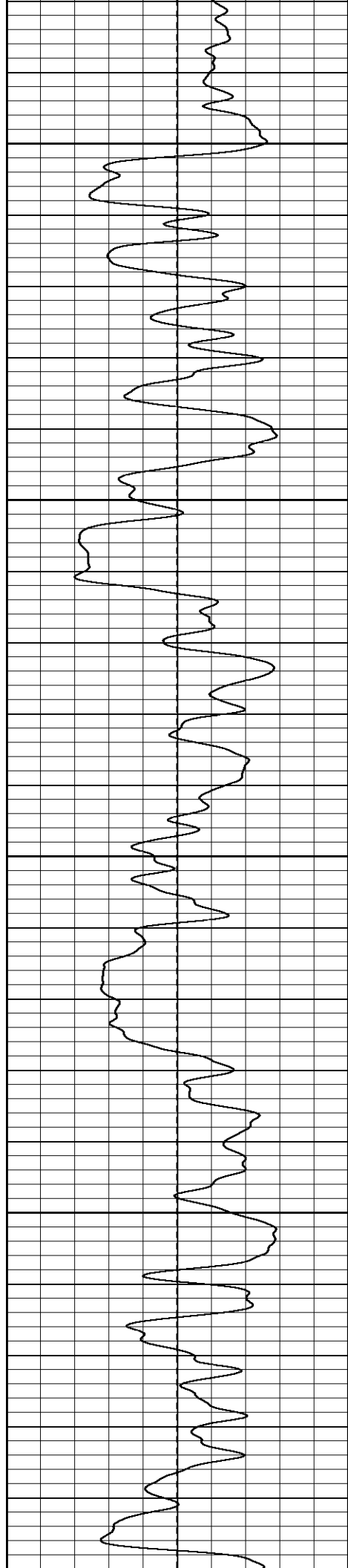


1250

1300

1350





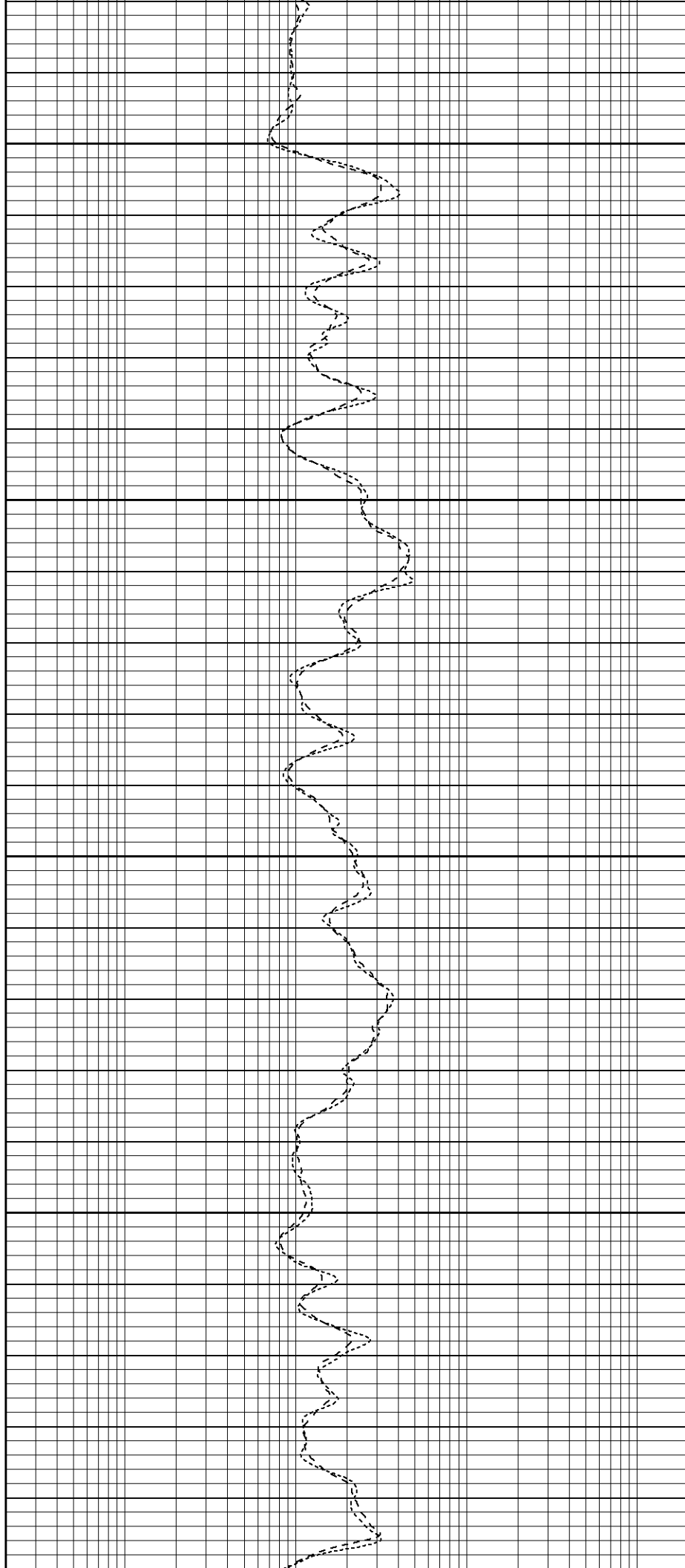
1450

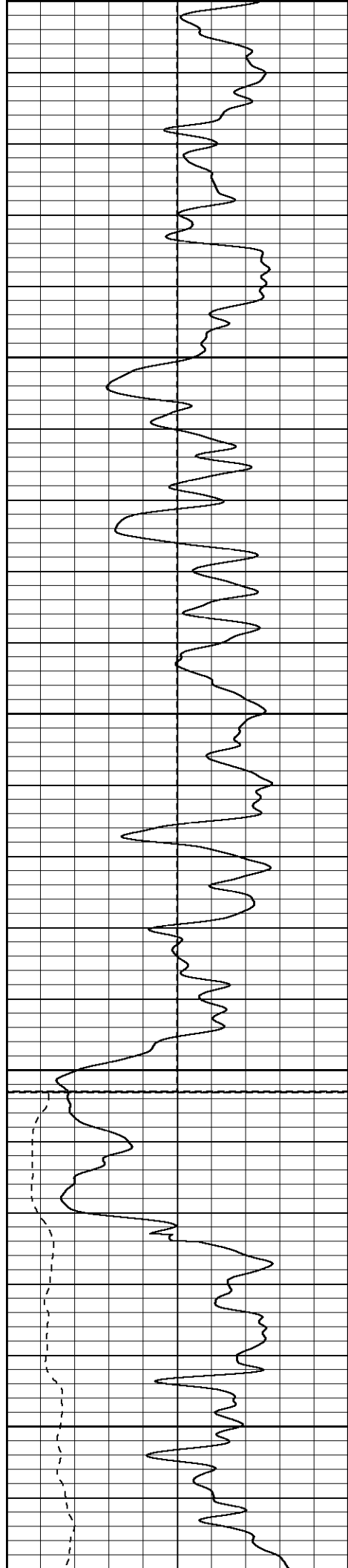
1500

1550

1600

1650





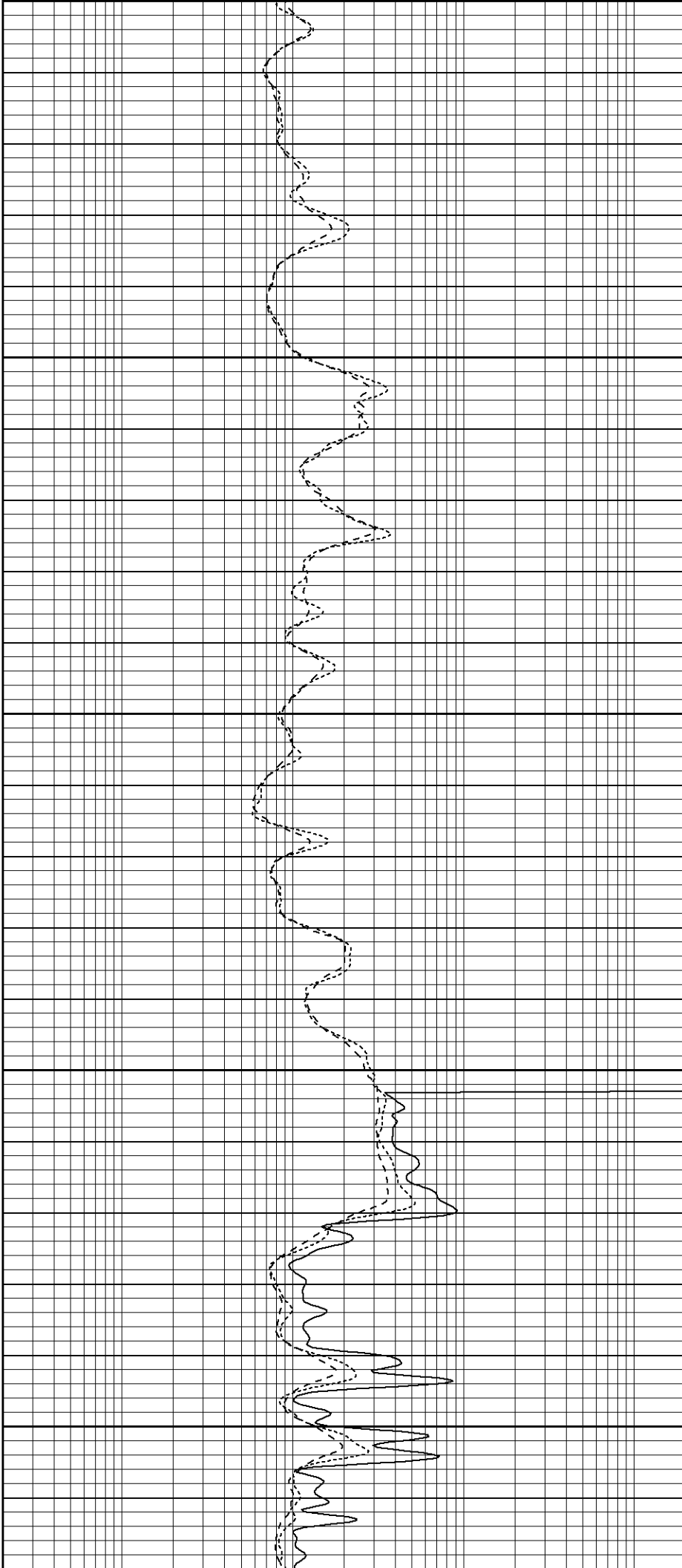
1650

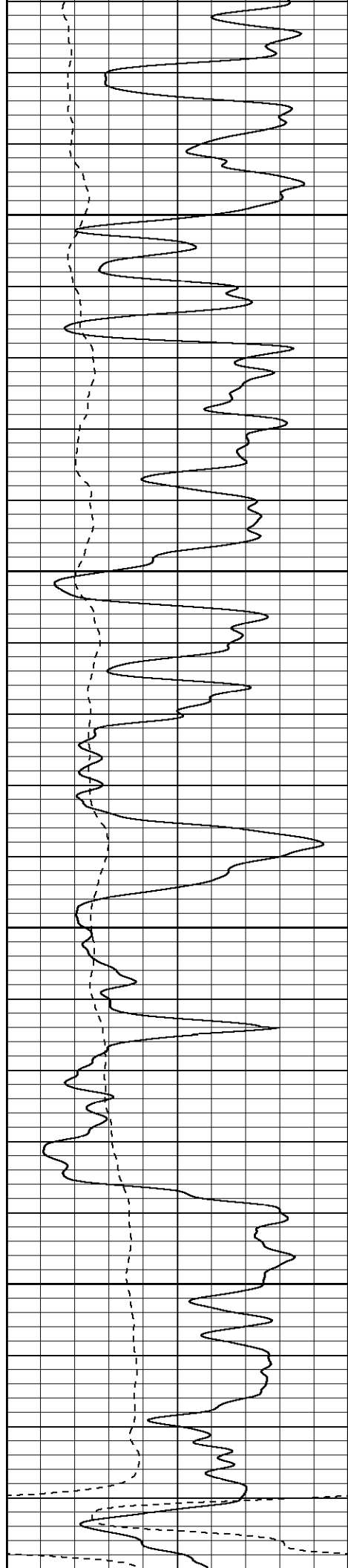
1700

1750

1800
Fluid Level

1850



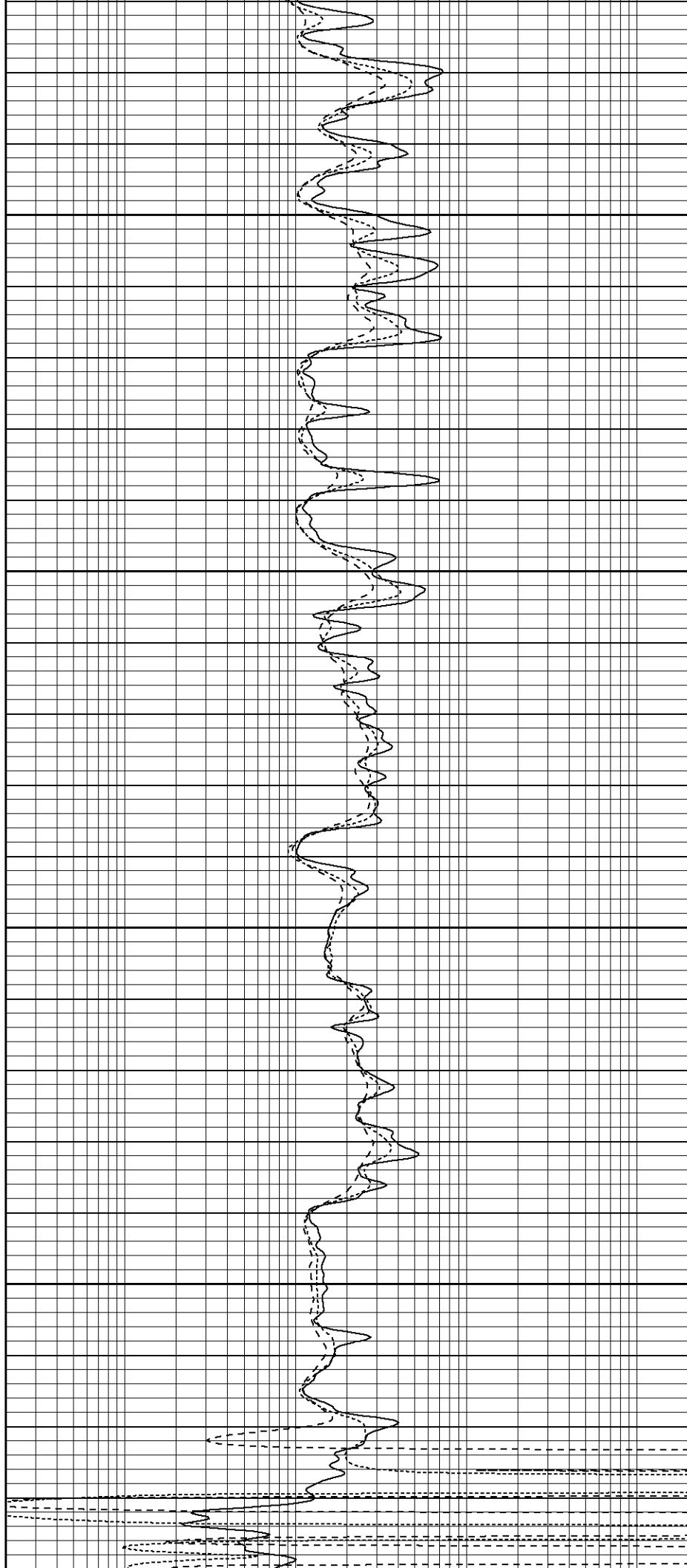


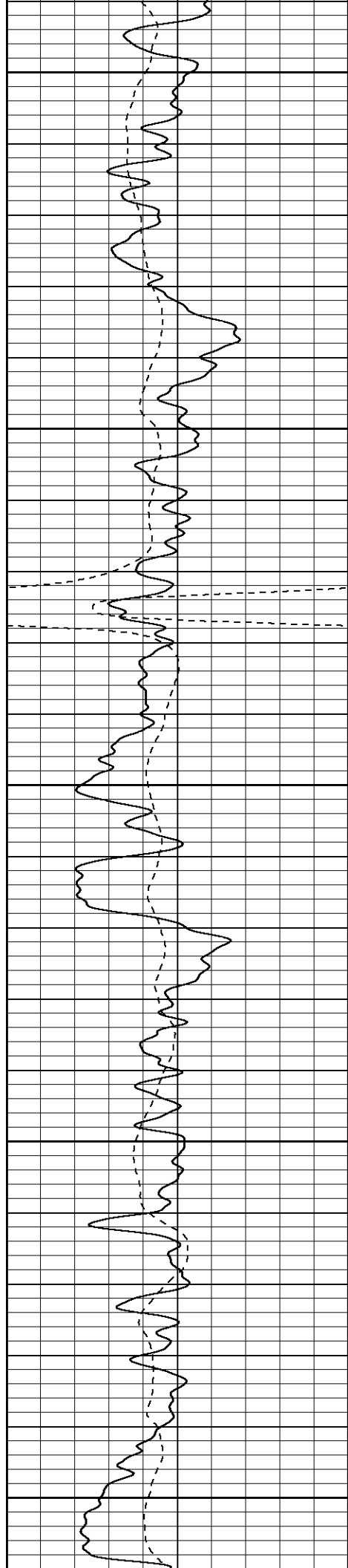
1900

1950

2000

2050





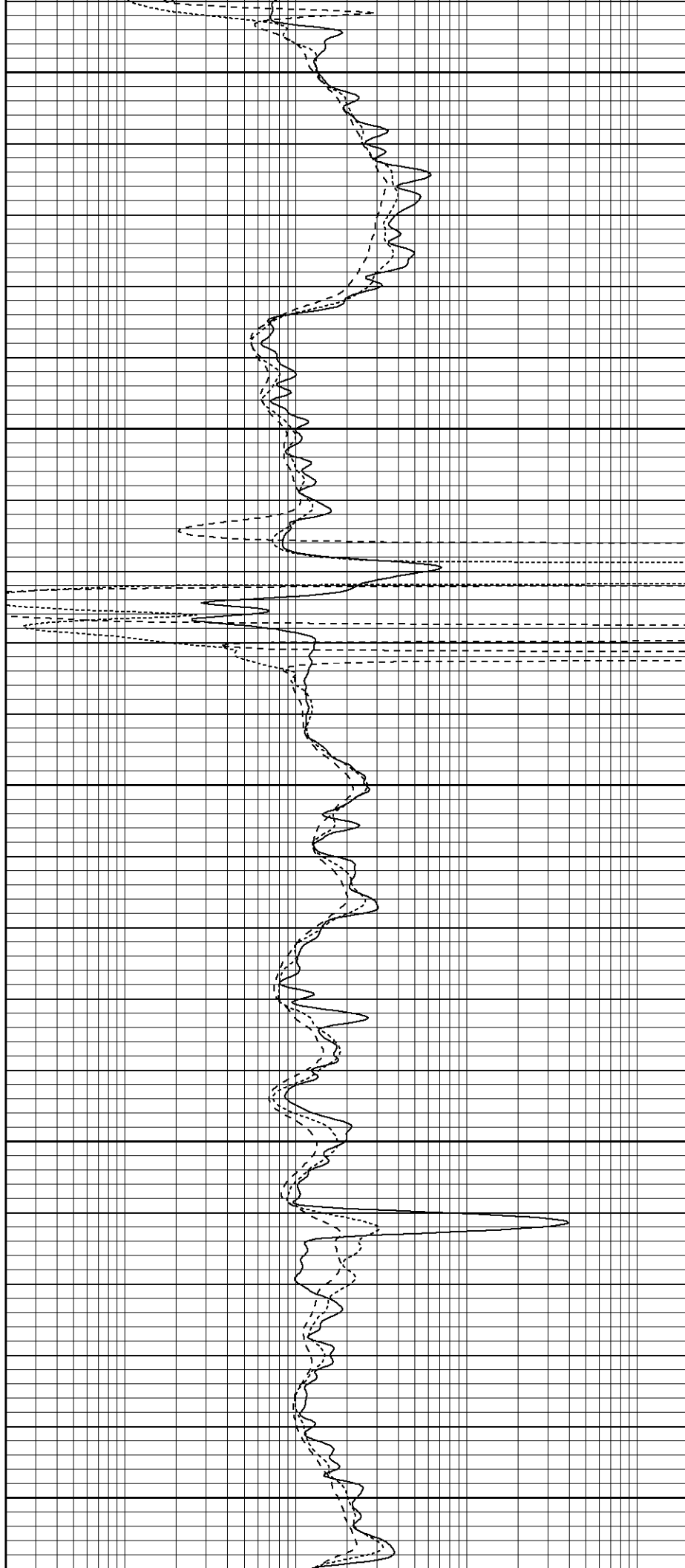
2100

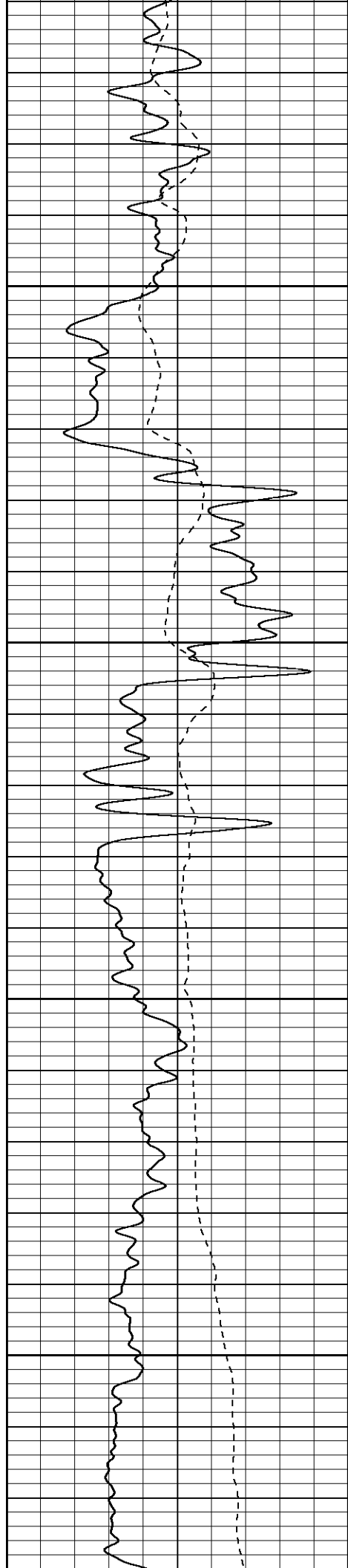
2150

2200

2250

2300



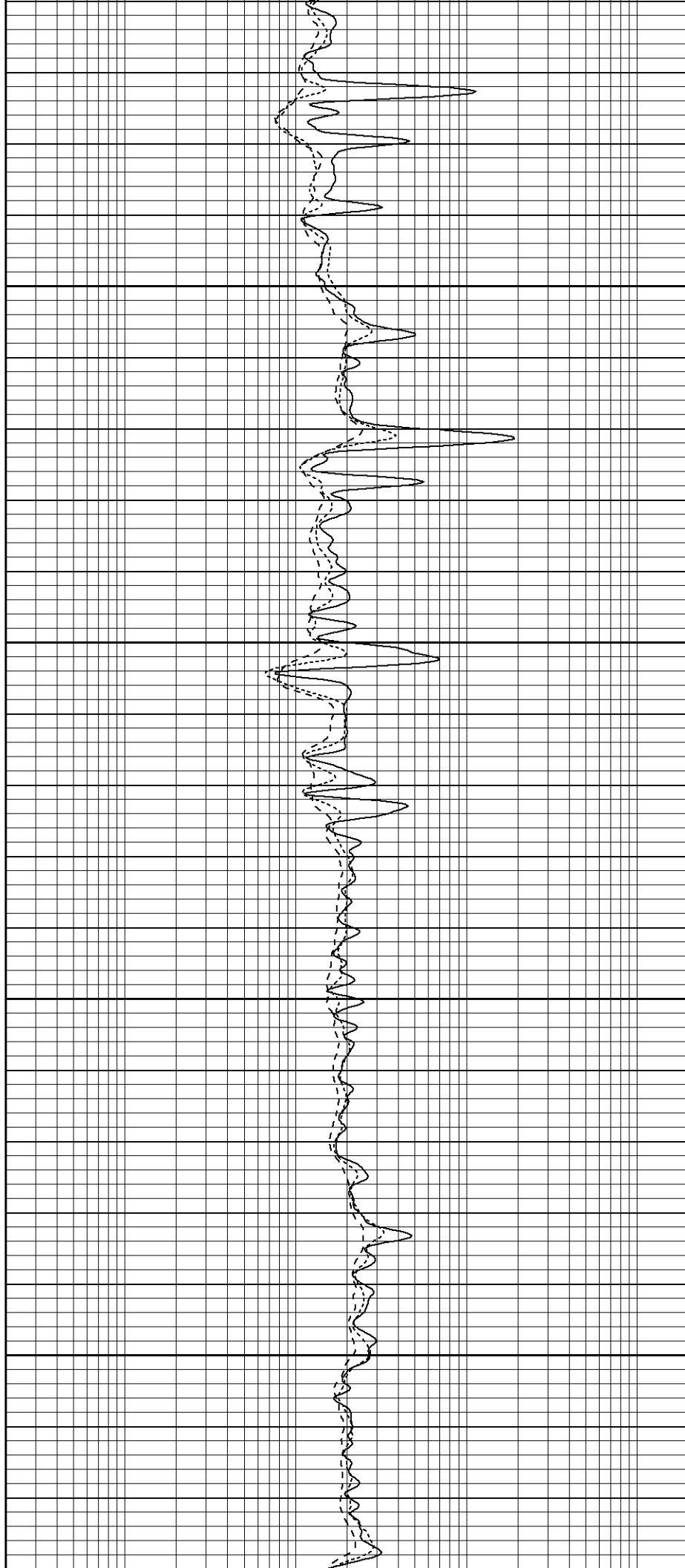


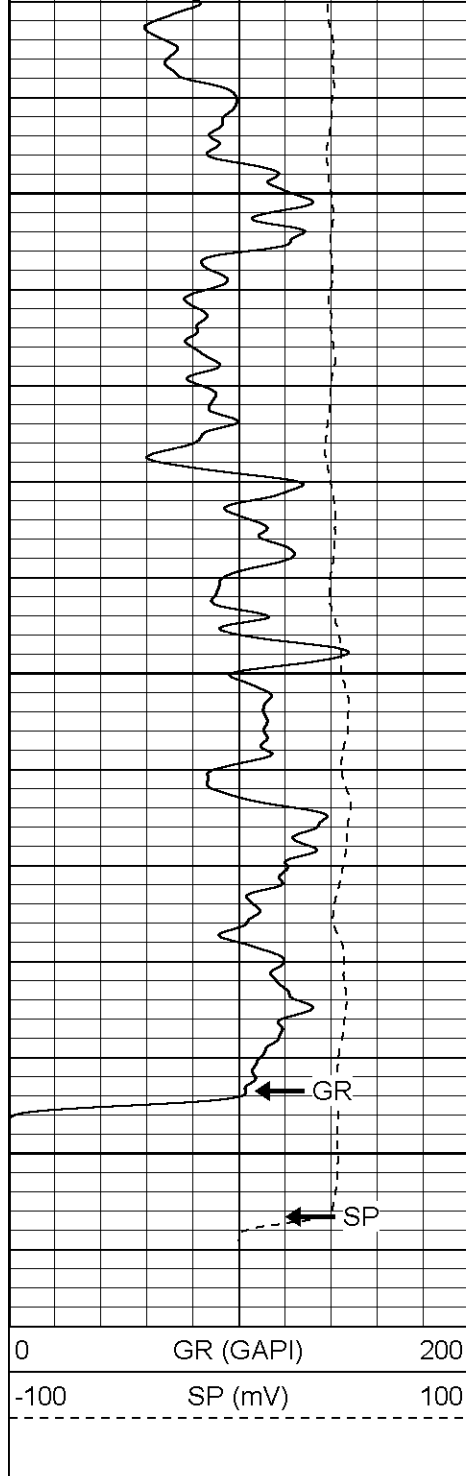
2350

2400

2450

2500

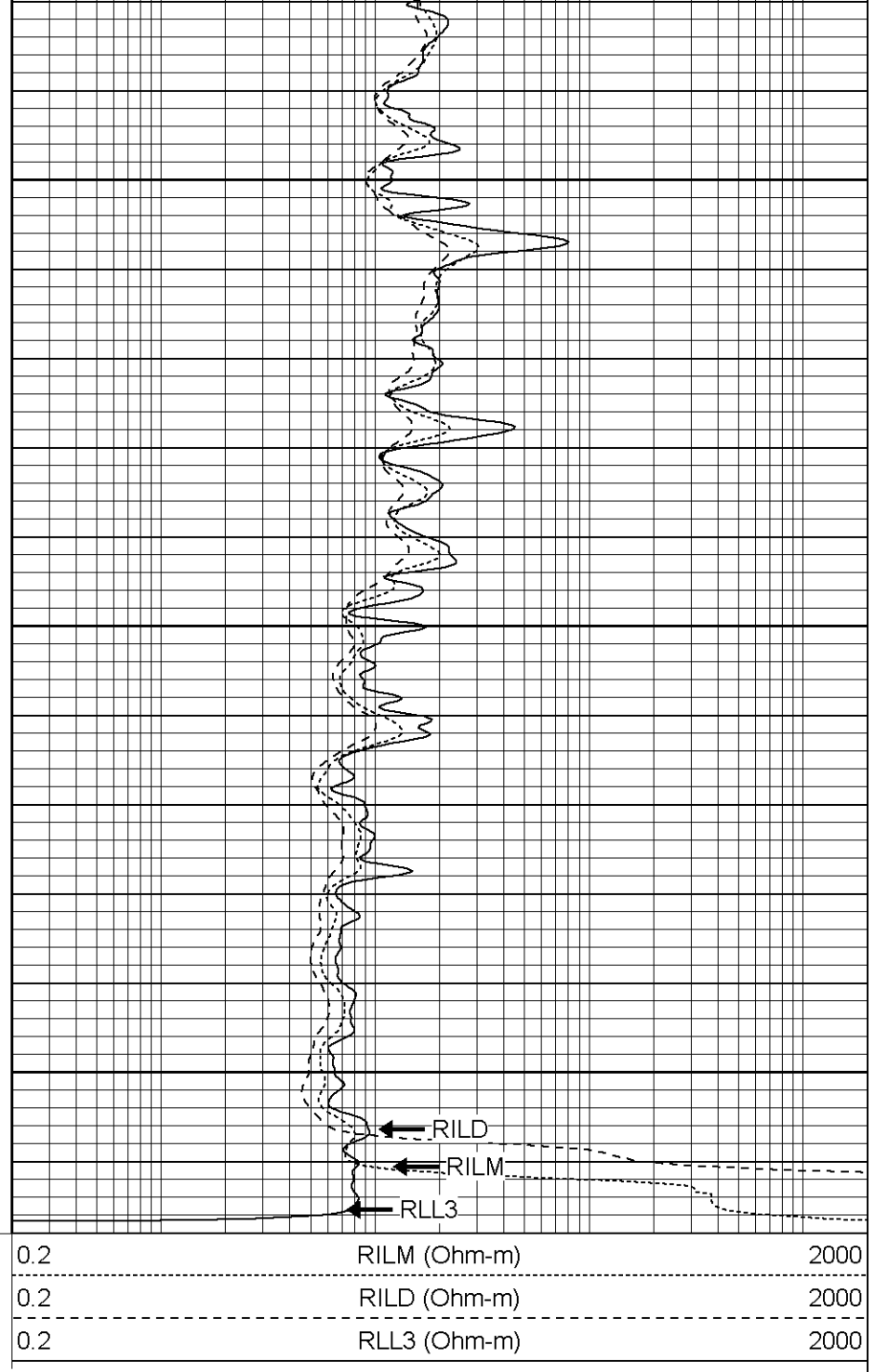




2550

2600

2650



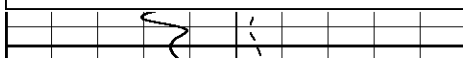
Patterson

Repeat Section

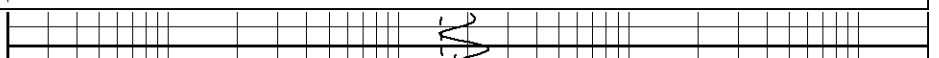
Database File: xtoac0602.db
 Dataset Pathname: pass1.1
 Presentation Format: dil
 Dataset Creation: Sun Jul 23 06:15:37 2006 by Calc Warrior 7.0 STD Ope
 Charted by: Depth in Feet scaled 1:240

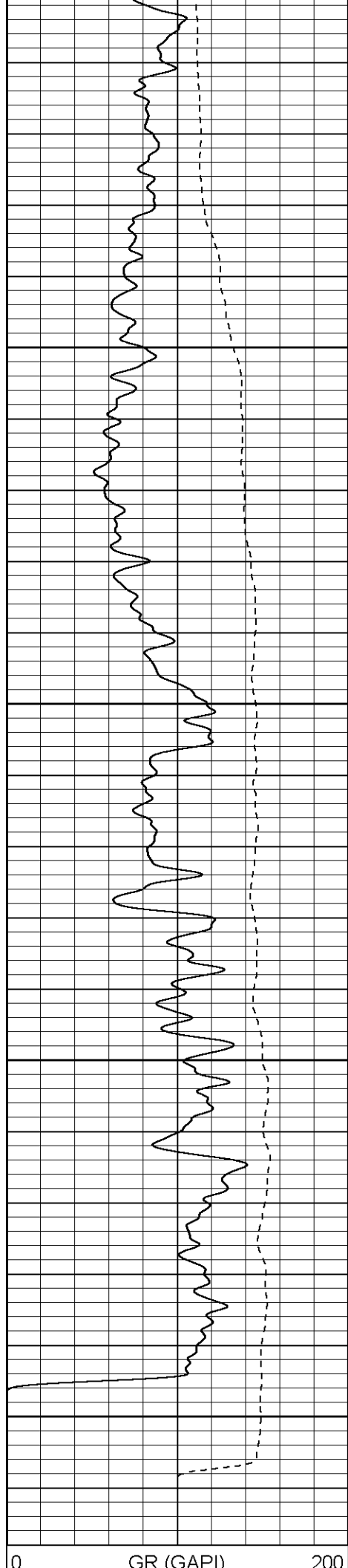
0	GR (GAPI)	200
-100	SP (mV)	100

0.2	RILM (Ohm-m)	2000
0.2	RILD (Ohm-m)	2000
0.2	RLL3 (Ohm-m)	2000



2450



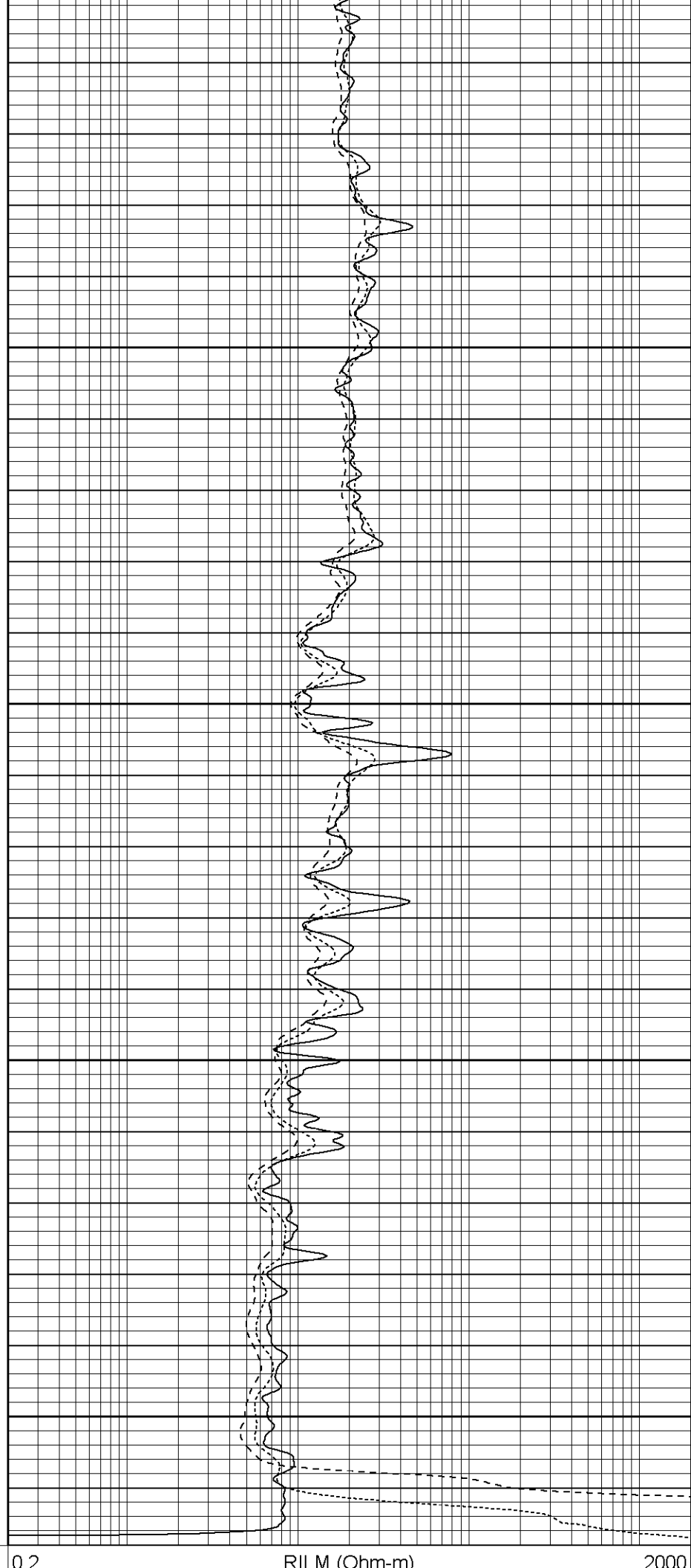


2500

2550

2600

2650



0.2

RII M (Ohm-m)

2000

-100	SP (mV)	100	0.2	RILD (Ohm-m)	2000
			0.2	RLL3 (Ohm-m)	2000

Dual Induction Calibration Report								
Serial-Model:				5375-G				
Surface Cal Performed:				Mon Jun 19 08:21:38 2006				
Downhole Cal Performed:				Wed Jul 12 14:42:49 2006				
Surface Calibration								
Readings				References			Results	
Loop:	Air	Loop		Air	Loop		m	b
Deep	0.012	0.632	V	0.000	500.000	mmho-m	806.768	-9.661
Medium	0.016	0.753	V	0.000	550.000	mmho-m	746.164	-12.032

