



SUPERIOR
Black Lick, Pa.
Mercer, Pa.
Wooster, Oh.
Cleveland, Ok.
Trinidad, Co.

DUAL INDUCTION LOG

Company XTO Energy Inc.
Well Golden Eagle 32-03
Field Purgatoire River
County Las Animas State Colorado

Location: API # : 05 071 09142 00

12' FNL & 1847' FWL

SEC 32 TWP 33S RGE 67W

Permanent Datum Ground Level Elevation 7570'
Log Measured From Ground Level
Drilling Measured From Ground Level

Other Services
CDL
NEUTRON
Elevation
K.B. -----
D.F. -----
G.L. 7570'

Date 7-25-07

Run Number One

Depth Driller 873'

Depth Logger 741'

Bottom Logged Interval 739'

Top Log Interval Conductor

Casing Driller 13 3/8" @ 49'

Casing Logger 48'

Bit Size 1 1"

Type Fluid in Hole Water

Density / Viscosity ///

pH / Fluid Loss ///

Source of Sample ///

Rm @ Meas. Temp ///

Rmf @ Meas. Temp ///

Rmc @ Meas. Temp ///

Source of Rmf / Rmc ///

Rm @ BHT ///

Time Circulation Stopped 7:00 P.M.

Time Logger on Bottom 8:00 P.M.

Maximum Recorded Temperature 76 DEG F

Equipment Number T697

Location Trinidad

Recorded By M. Norton

Witnessed By Mr. Don Johnson

<<< Fold Here >>>

All interpretations are opinions based on inferences from electrical or other measurements and we cannot and do not guarantee the accuracy or correctness of any interpretation, and we shall not, except in the case of gross or willful negligence on our part, be liable or responsible for any loss, costs, damages, or expenses incurred or sustained by anyone resulting from any interpretation made by any of our officers, agents or employees. These interpretations are also subject to our general terms and conditions set out in our current Price Schedule.

Comments

Well Directions:
Second Bosque entrance four miles after Weston, first left, first right,
at Y stay right, first drive thru location.



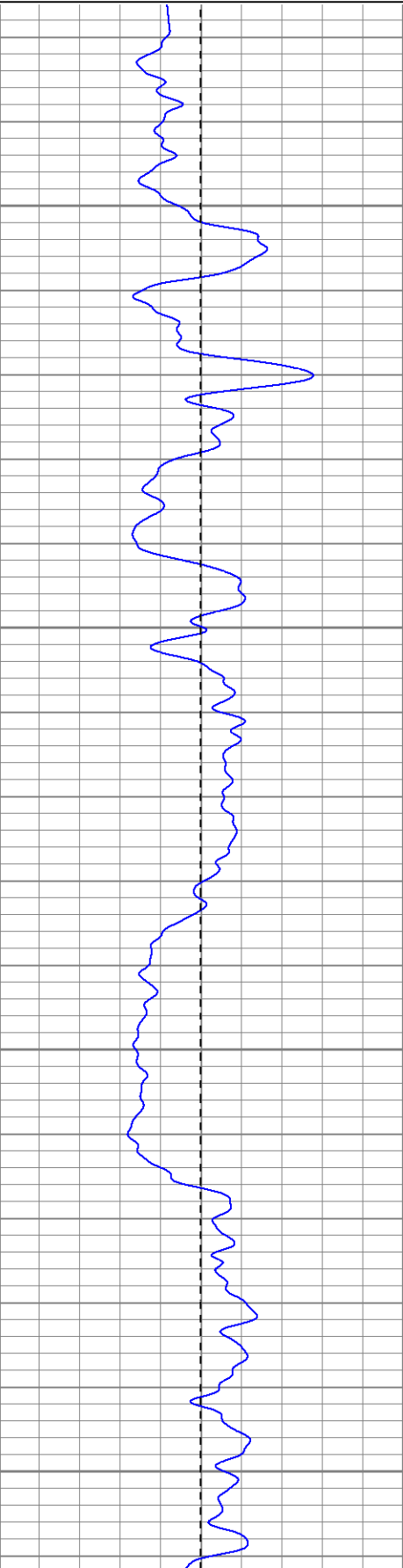
SUPERIOR
Black Lick, Pa.
Mercer, Pa.
Wooster, Oh.
Cleveland, Ok.
Trinidad, Co.

Main Pass

Database File: xtoge3203.db
Dataset Pathname: pass2.1
Presentation Format: dil
Dataset Creation: Wed Jul 25 20:55:59 2007 by Calc Open-Cased 061129
Charted by: Depth in Feet scaled 1:240

0	GR (GAPI)	200
-100	SP (mV)	100

0.2	RILM (Ohm-m)	2000
0.2	RILD (Ohm-m)	2000
0.2	RLL3 (Ohm-m)	2000

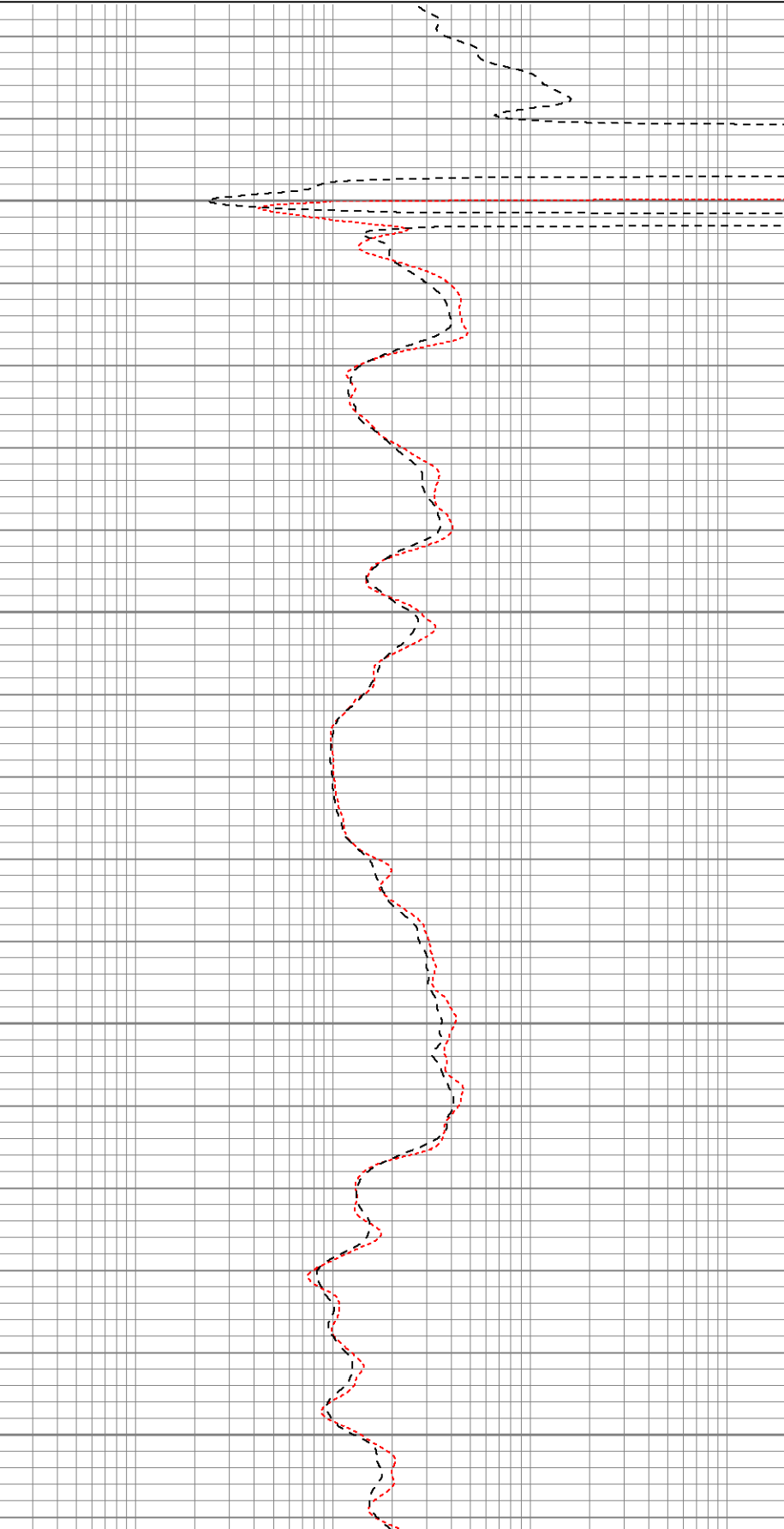


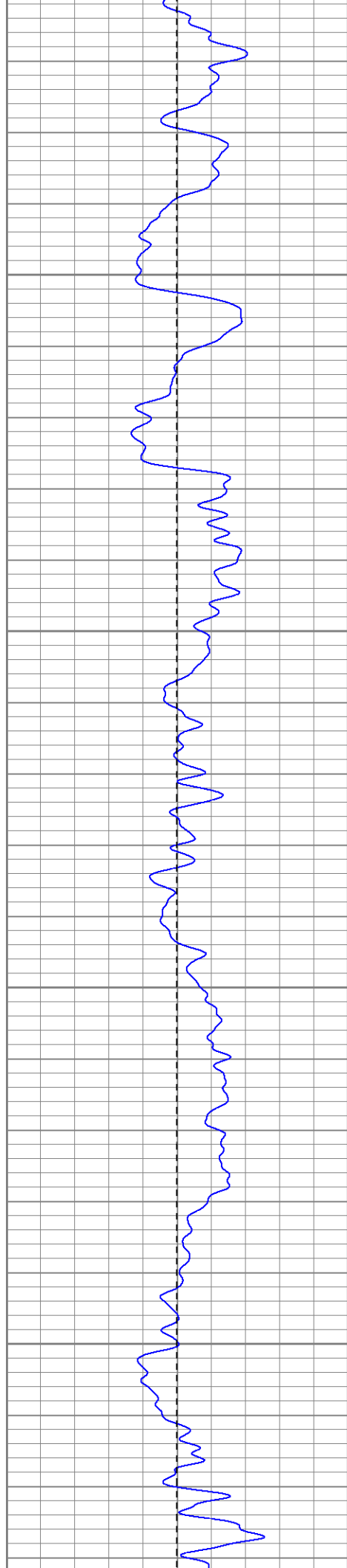
50

100

150

200



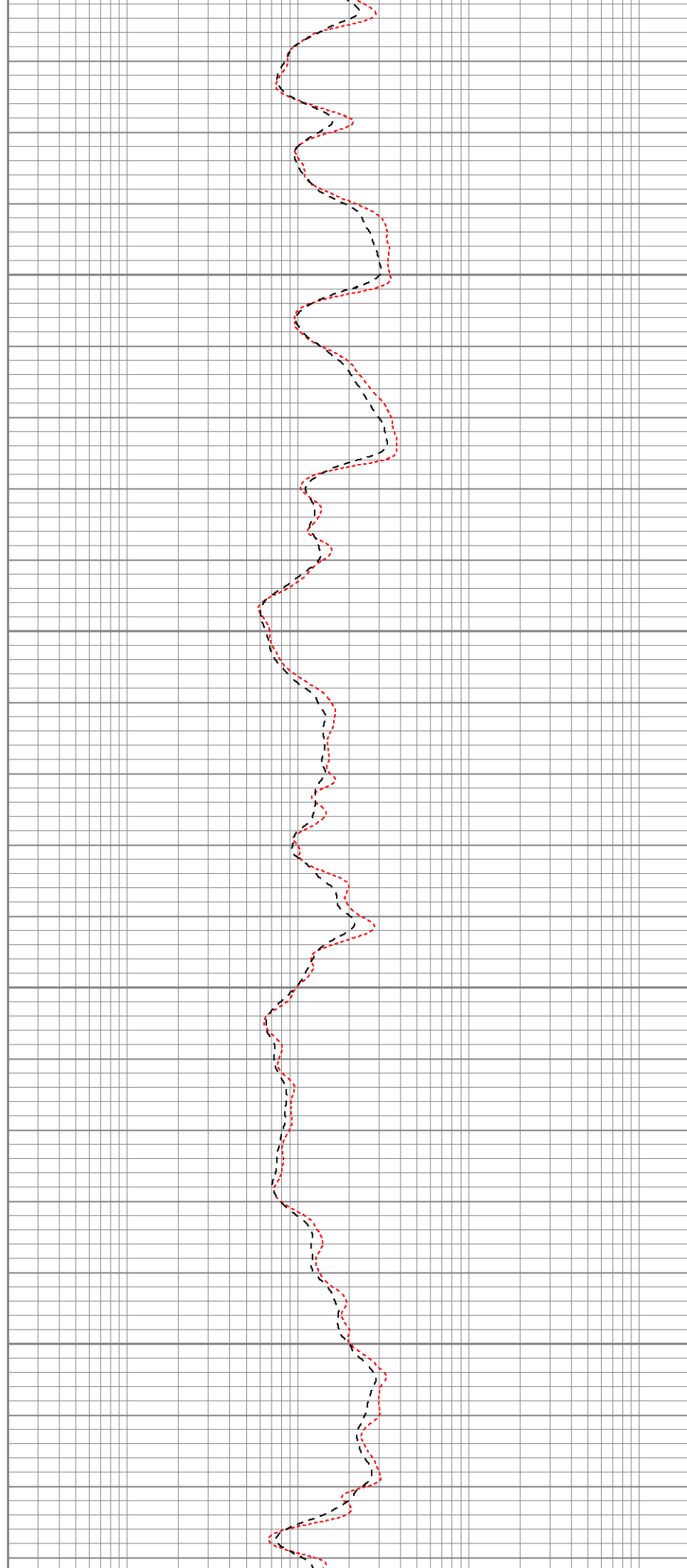


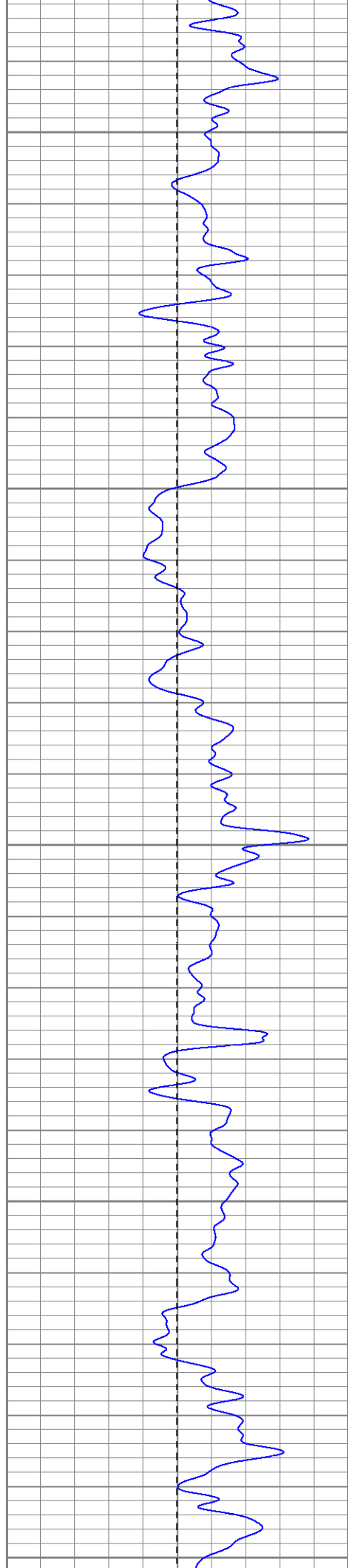
250

300

350

400





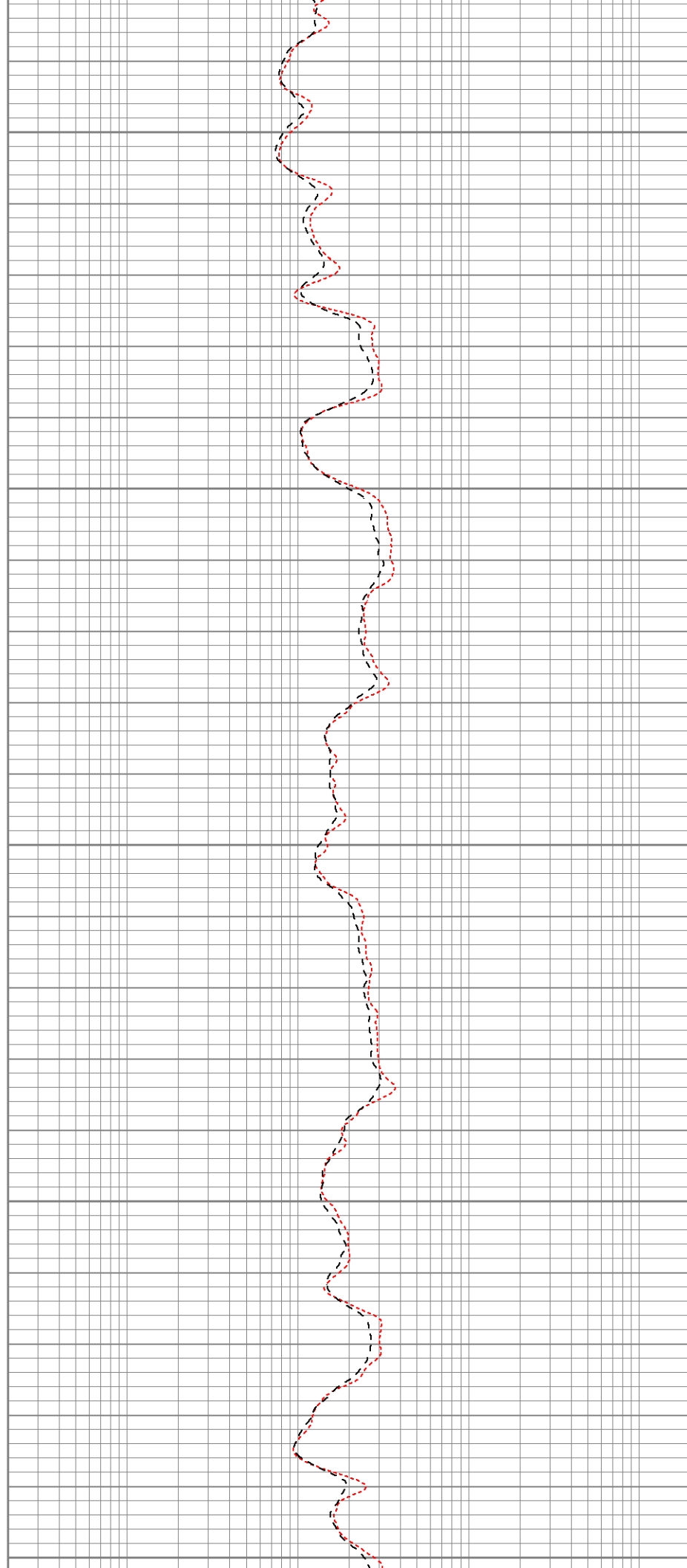
450

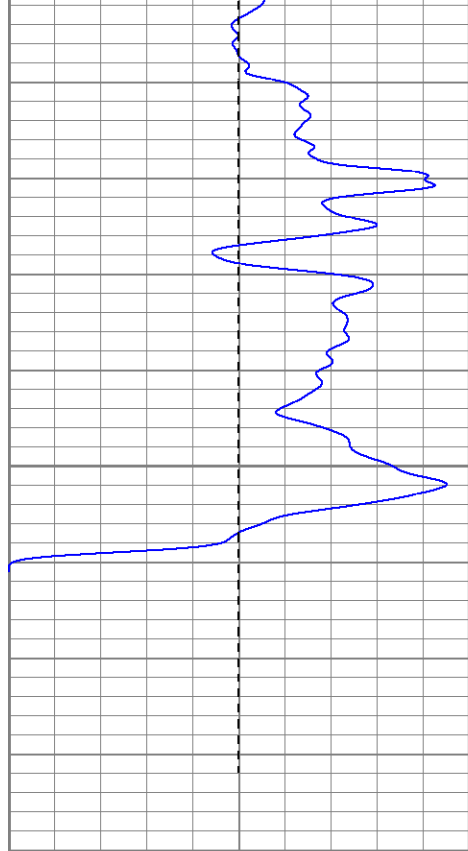
500

550

600

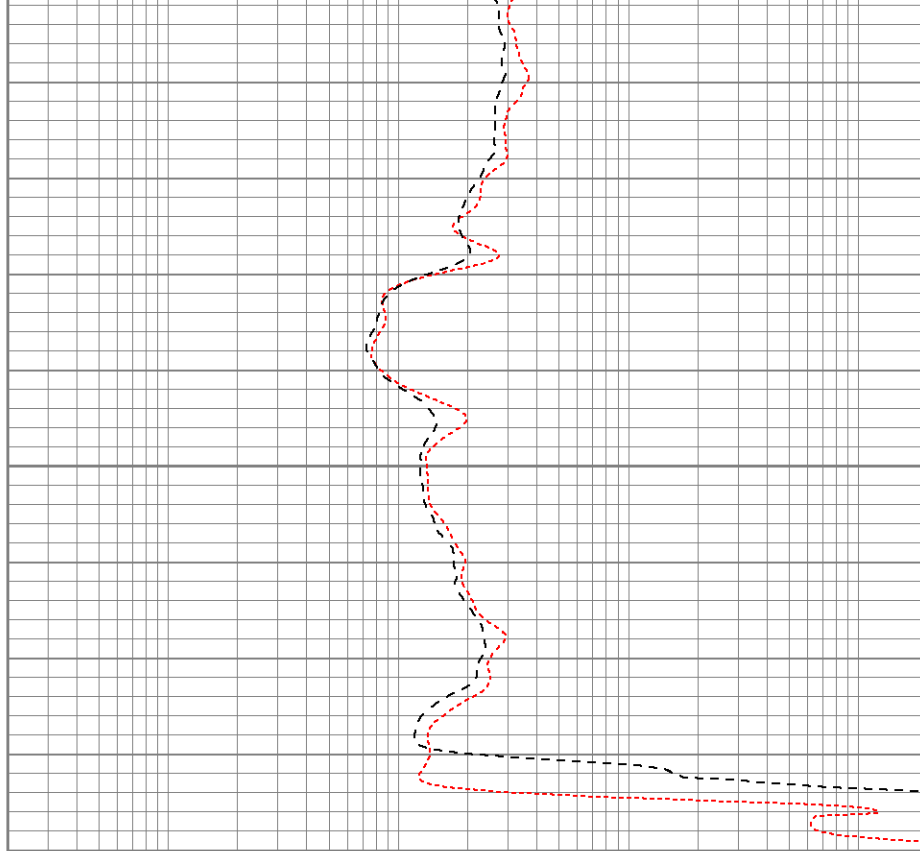
650





700

0	GR (GAPI)	200
-100	SP (mV)	100



0.2	RILM (Ohm-m)	2000
0.2	RILD (Ohm-m)	2000
0.2	RLL3 (Ohm-m)	2000



SUPERIOR

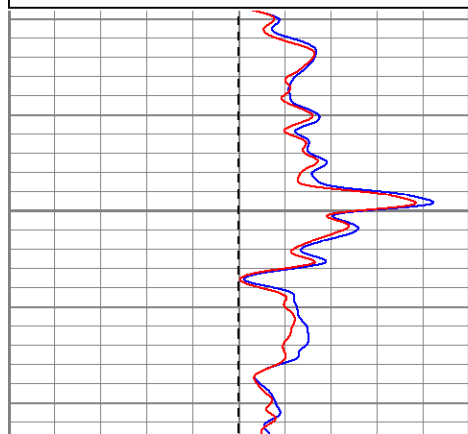
Black Lick, Pa.
Mercer, Pa.
Wooster, Oh.
Cleveland, Ok.
Trinidad, Co.

Repeat Section

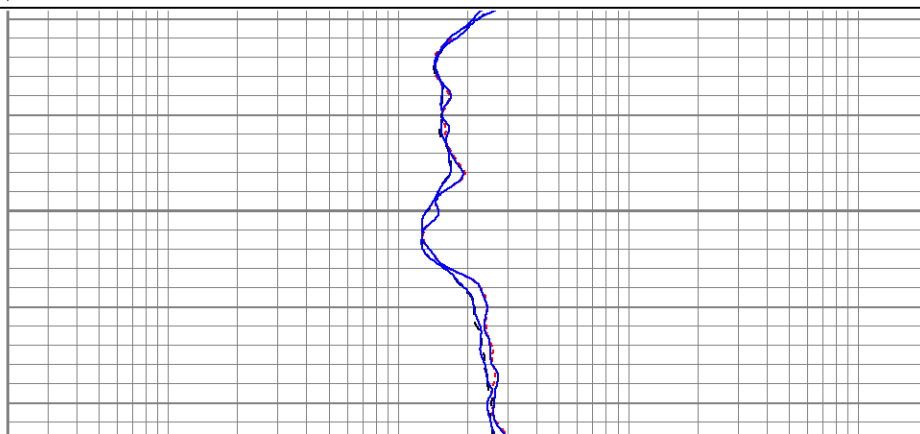
Database File: xtoge3203.db
Dataset Pathname: pass1.1
Presentation Format: dil
Dataset Creation: Wed Jul 25 20:54:33 2007 by Calc Open-Cased 061129
Charted by: Depth in Feet scaled 1:240

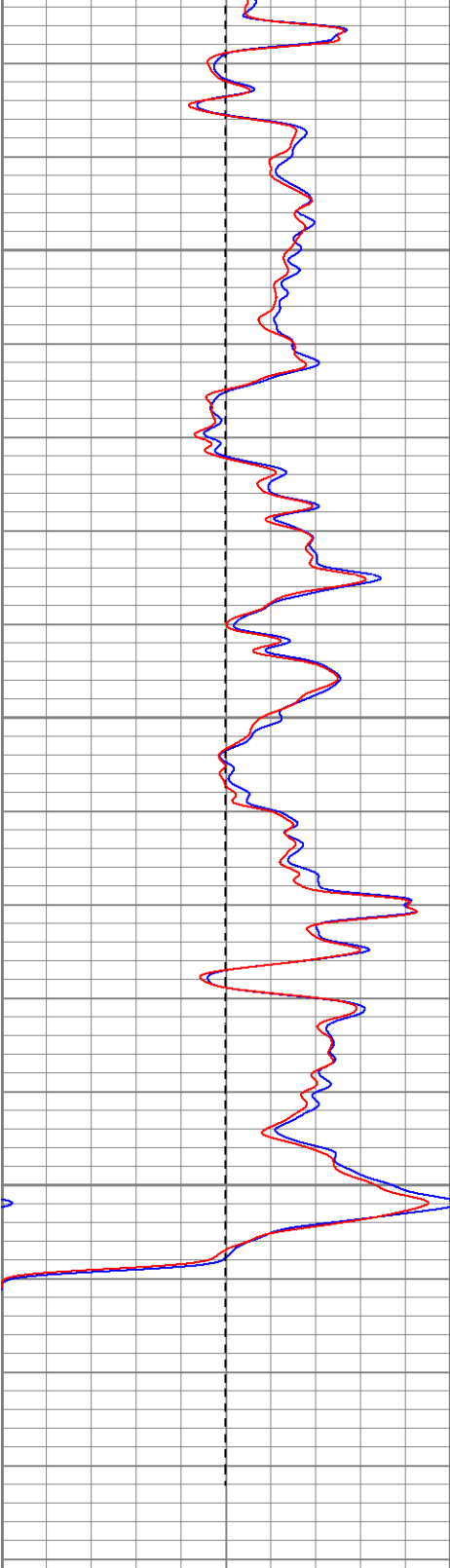
0	GR (GAPI)	200
-100	SP (mV)	100
0	GR-repeat (GAPI)	200

0.2	RILM (Ohm-m)	2000
0.2	RILD (Ohm-m)	2000
0.2	RLL3 (Ohm-m)	2000
0.2	RILM-repeat (Ohm-m)	2000
0.2	RILD-repeat (Ohm-m)	2000



550



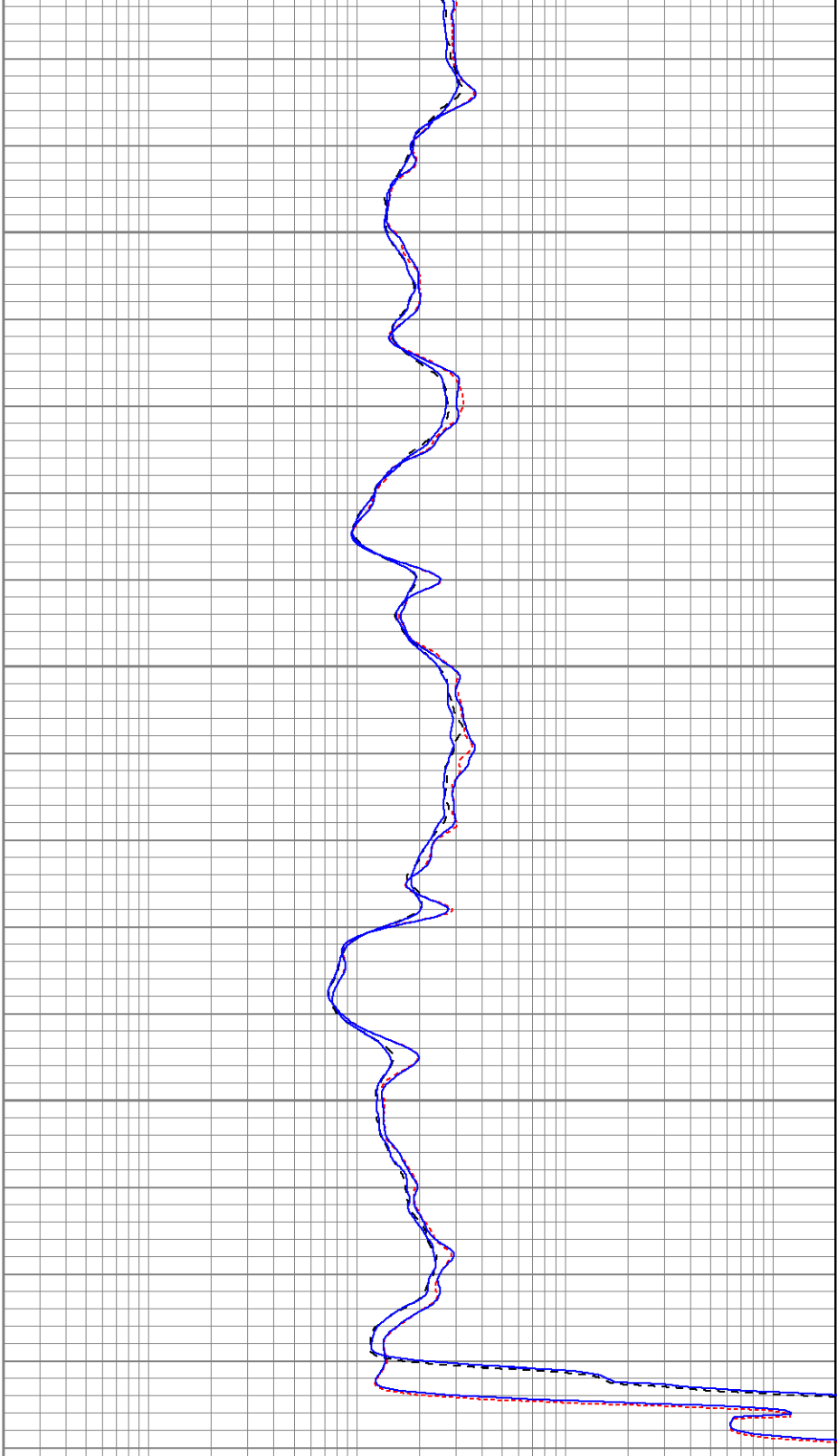


0	GR (GAPI)	200
-100	SP (mV)	100
0	GR-repeat (GAPI)	200

600

650

700



0.2	RILM (Ohm-m)	2000
0.2	RILD (Ohm-m)	2000
0.2	RLL3 (Ohm-m)	2000
0.2	RILM-repeat (Ohm-m)	2000
0.2	RILD-repeat (Ohm-m)	2000

Calibration Report

Database File: xtoge3203.db
Dataset Pathname: pass2
Dataset Creation: Wed Jul 25 20:21:20 2007 by Log Open-Cased 061129

Serial-Model:	5375-G
Surface Cal Performed:	Thu Jul 05 11:35:02 2007
Downhole Cal Performed:	Thu Jul 05 11:35:16 2007

Surface Calibration

Loop:	Readings			References			Results	
	Air	Loop		Air	Loop		m	b
Deep	0.001	0.620	V	0.000	500.000	mmho-m	807.659	-1.119
Medium	0.005	0.743	V	0.000	550.000	mmho-m	744.727	-3.505
Internal:	Zero	Cal		Zero	Cal		m	b
Deep	0.001	0.620	V	0.000	500.000	mmho-m	807.698	-1.159
Medium	0.005	0.743	V	0.000	550.000	mmho-m	744.801	-3.569

Downhole Calibration

Internal:	Readings			References			Results	
	Zero	Cal		Zero	Cal		m	b
Deep	0.123	499.901	mmho-m	0.039	500.015	mmho-m	1.000	-0.084
Medium	0.245	549.982	mmho-m	0.064	550.009	mmho-m	1.000	-0.182
Shallow	2.506	0.009	V	500.000	2.000	Ohm-m	100.000	0.000

Compensated Density Calibration Report

Serial-Model:	2118-poilex
Source / Verifier:	/
Master Calibration Performed:	Wed Jul 11 09:42:26 2007

Master Calibration

	Density		Far Detector	Near Detector	
Magnesium	1.710	g/cc	665.94	685.05	cps
Aluminum	2.590	g/cc	149.68	463.33	cps
Spine Angle = 75.32			Density/Spine Ratio = 0.570		
	Size		Reading		
Small Ring	7.85	in	4.25	V	
Large Ring	14.00	in	8.50	V	

Gamma Ray Calibration Report

Serial Number:	2001	
Tool Model:	OH	
Performed:	Tue Jul 10 07:42:35 2007	
Calibrator Value:	1.0	GAPI
Background Reading:	0.0	cps
Calibrator Reading:	1.0	cps
Sensitivity:	0.1100	GAPI/cps

Neutron Calibration Report

Serial Number:	5145
Tool Model:	G
Performed:	Sat Jul 21 07:01:21 2007

Sensitivity: 1 NAPI/cps

Sensor	Offset (ft)	Schematic	Description	Len (ft)	OD (in)	Wt (lb)
NEU	37.19		None	0.75	1.50	5.00
			NEU-G (5145) Gearhart Epithermal	5.75	3.50	85.00
GR	31.62		GR-OH (2001) SIE	3.50	3.25	40.00
LSD DCAL SSD	23.45		CDL-poilex (2118)	8.79	4.00	275.00
	23.04					
	22.91					
CILD SP	10.60		DIL-G (5375) Gearhart	20.83	4.00	345.00
	10.60					
CILM	6.89					
RLL3	1.70					
Dataset: xtoge3203.db: field/well/run1/pass2 Total Length: 39.62 ft Total Weight: 750.00 lb O.D. 4.00 in						