

**Patterson**

**SINGLE  
INDUCTION  
LOG**

Company Pioneer Natural Resources  
Well Black Rabbit 42-20 R  
Field Purgatoire River  
County Las Animas State Colorado

Location: API # : 05 071 08569 00  
1556' FNL & 976' FEL  
SEC 20 TWP 32S RGE 65W  
Permanent Datum Ground Level Elevation 7352'  
Log Measured From Kelly Bushing 4' Above G.L.  
Drilling Measured From Kelly Bushing  
Other Services  
CDL  
NEUTRON  
Elevation  
K.B. 7356'  
D.F. -----  
G.L. 7352'

Date	10-22-05		
Run Number	One		
Depth Driller	1790'		
Depth Logger	1792'		
Bottom Logged Interval	1790'		
Top Log Interval	Surface Casing		
Casing Driller	8 5/8" @ 733'		
Casing Logger	733'		
Bit Size	7 7/8"		
Type Fluid in Hole	Water		
Density / Viscosity	///		
pH / Fluid Loss	///		
Source of Sample	///		
Rm @ Meas. Temp	///		
Rmf @ Meas. Temp	///		
Rmc @ Meas. Temp	///		
Source of Rmf / Rmc	///		
Rm @ BHT	///		
Time Circulation Stopped	4:00 A.M.		
Time Logger on Bottom	5:45 A.M.		
Maximum Recorded Temperature	98 DEG F		
Equipment Number	T720		
Location	Trinidad		
Recorded By	M. Norton		
Witnessed By	Mr. Tom Beardslee		

<<< Fold Here >>>

All interpretations are opinions based on inferences from electrical or other measurements and we cannot and do not guarantee the accuracy or correctness of any interpretation, and we shall not, except in the case of gross or willful negligence on our part, be liable or responsible for any loss, costs, damages, or expenses incurred or sustained by anyone resulting from any interpretation made by any of our officers, agents or employees. These interpretations are also subject to our general terms and conditions set out in our current Price Schedule.

**Comments**

Well Directions:  
Bon Carbo Right At Post Office, Right At The Tin Barn,  
Second Left, First Location On The Left.

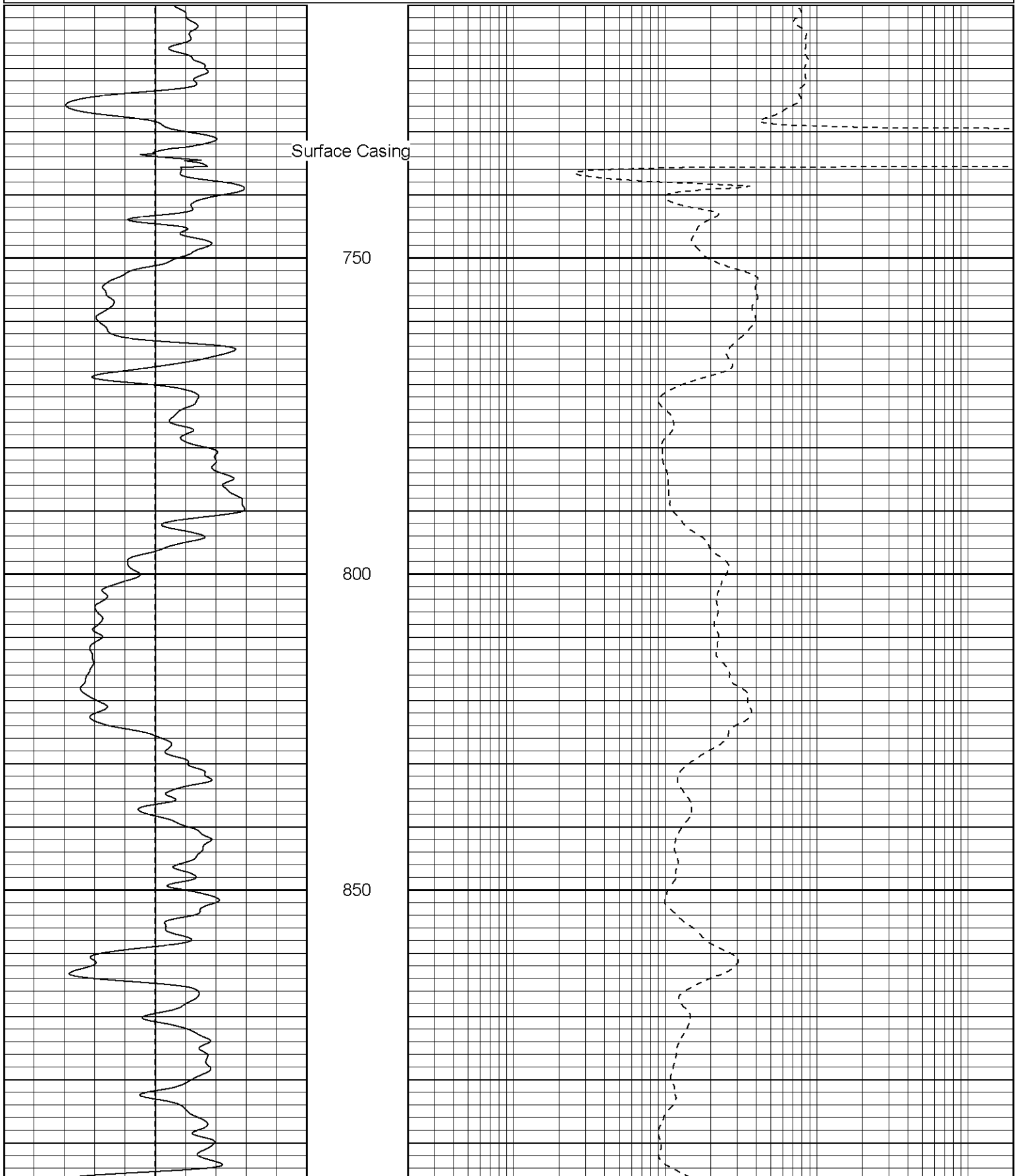
**Patterson**

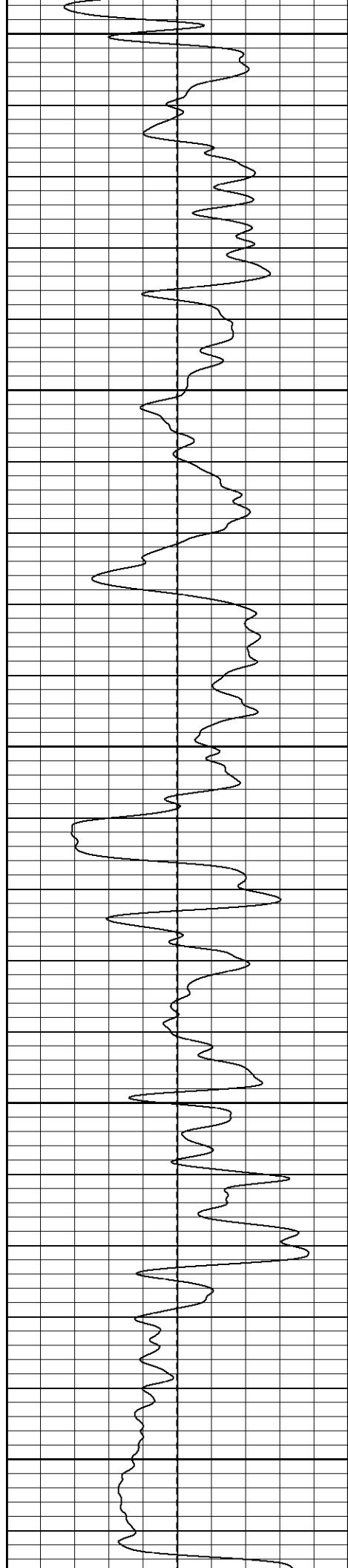
**Main Pass**

Database File: blackrabbitr.db  
Dataset Pathname: pass2.1  
Presentation Format: iel  
Dataset Creation: Sat Oct 22 07:29:19 2005 by Calc Warrior 7.0 STD Ope  
Charted by: Depth in Feet scaled 1:240

0	GR (GAPI)	200
-100	SP (mV)	100

0.2	DIR (Ohm-m)	2000
0.2	SN (Ohm-m)	2000





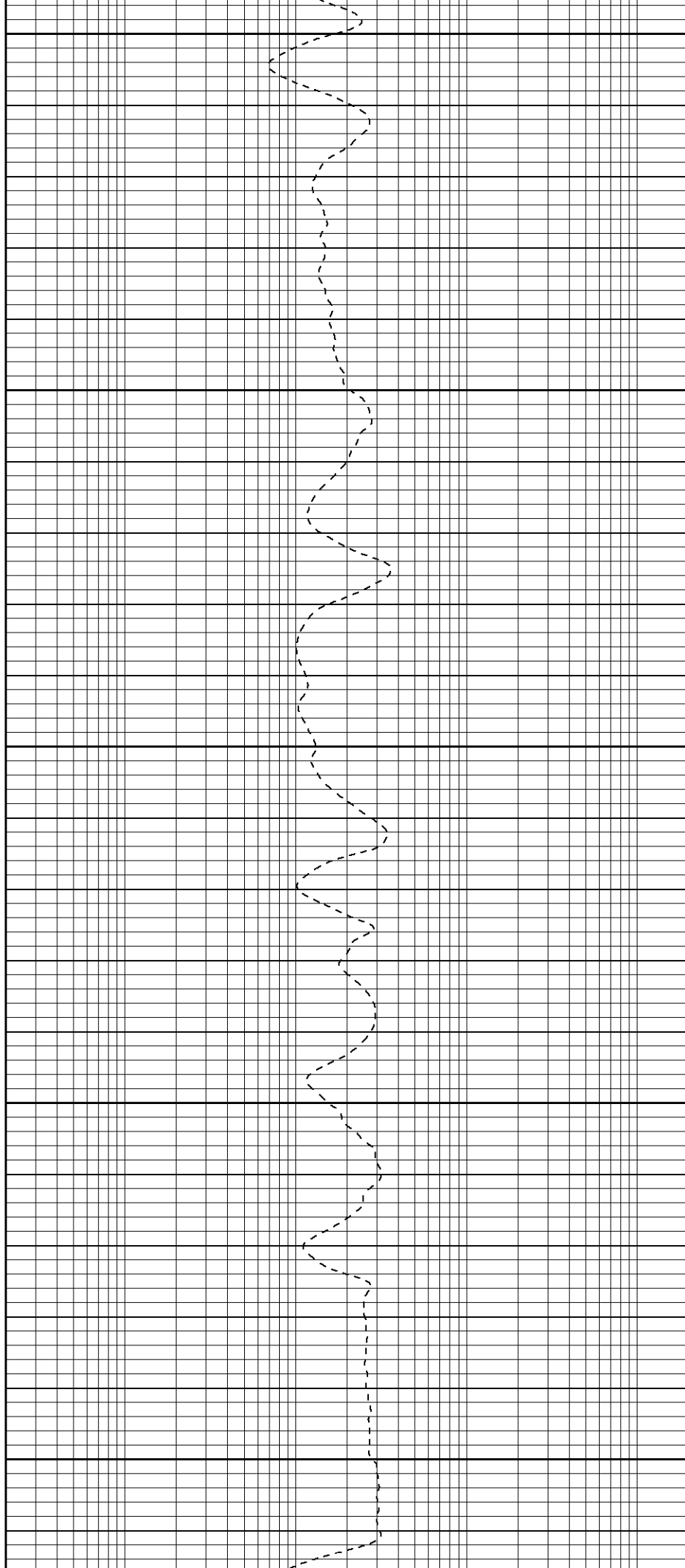
900

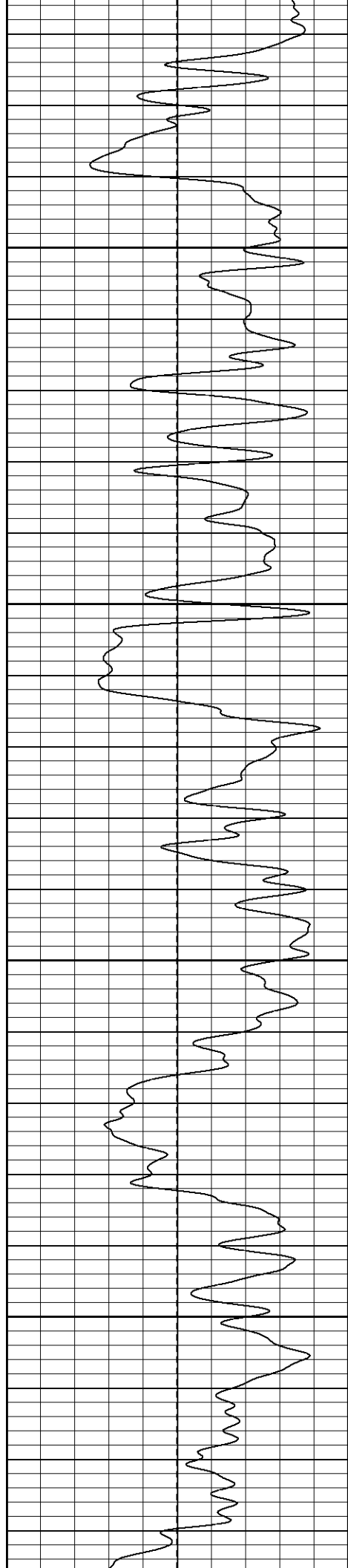
950

1000

1050

1100



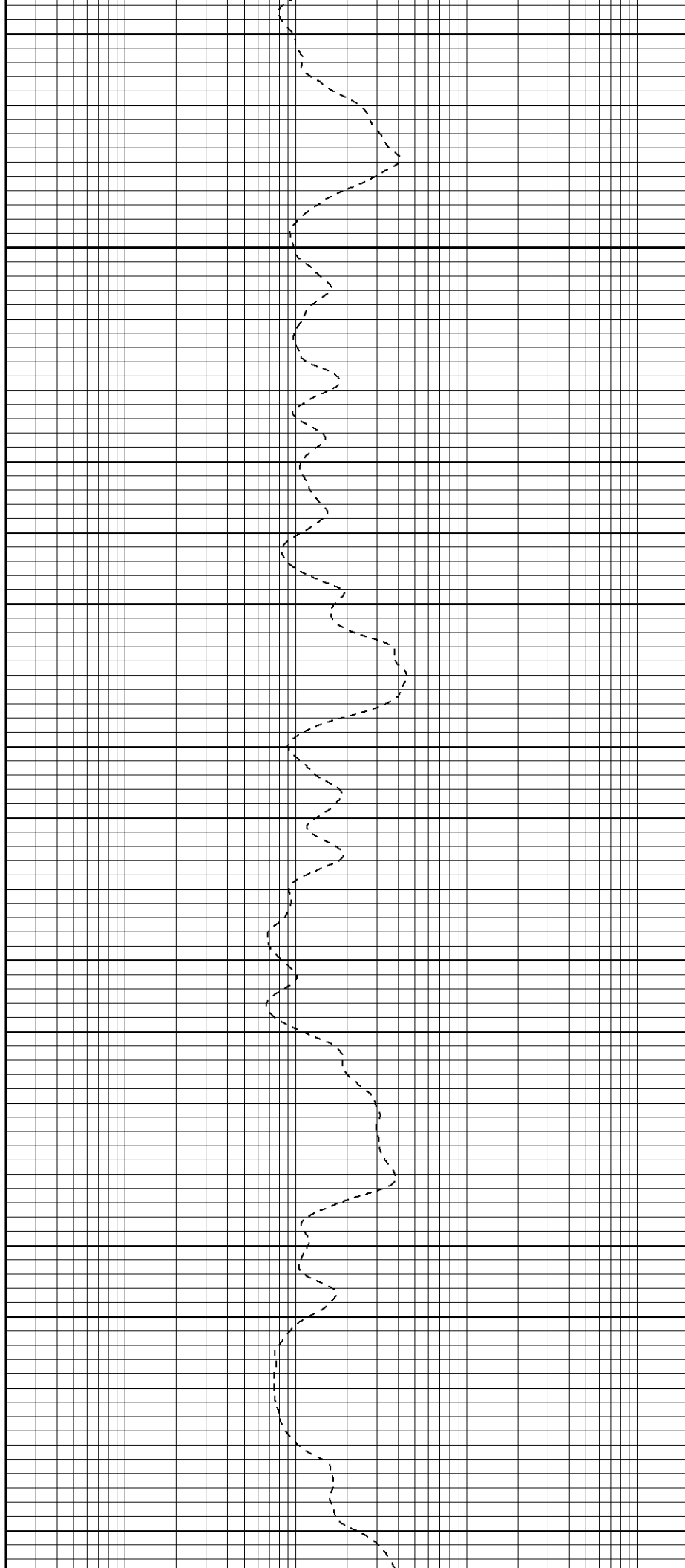


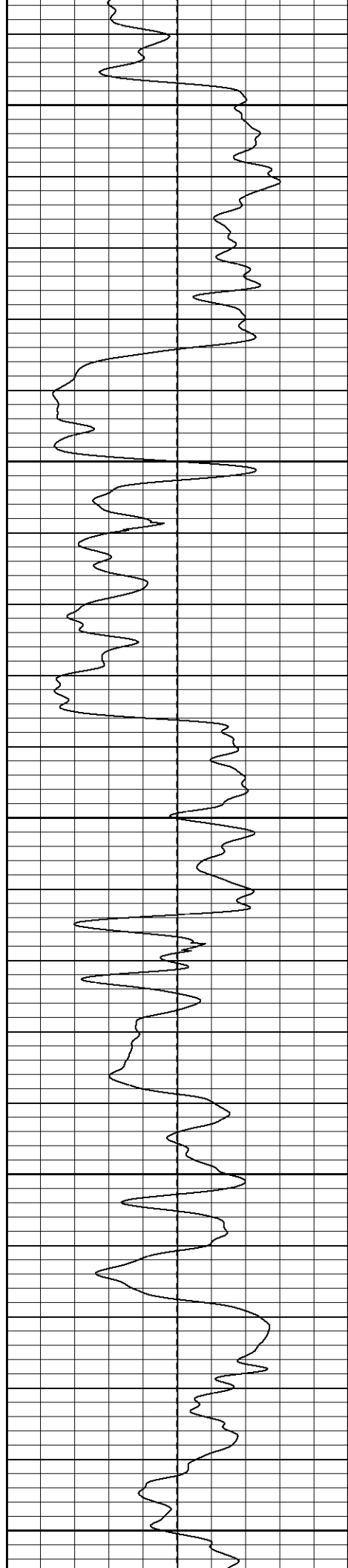
1150

1200

1250

1300





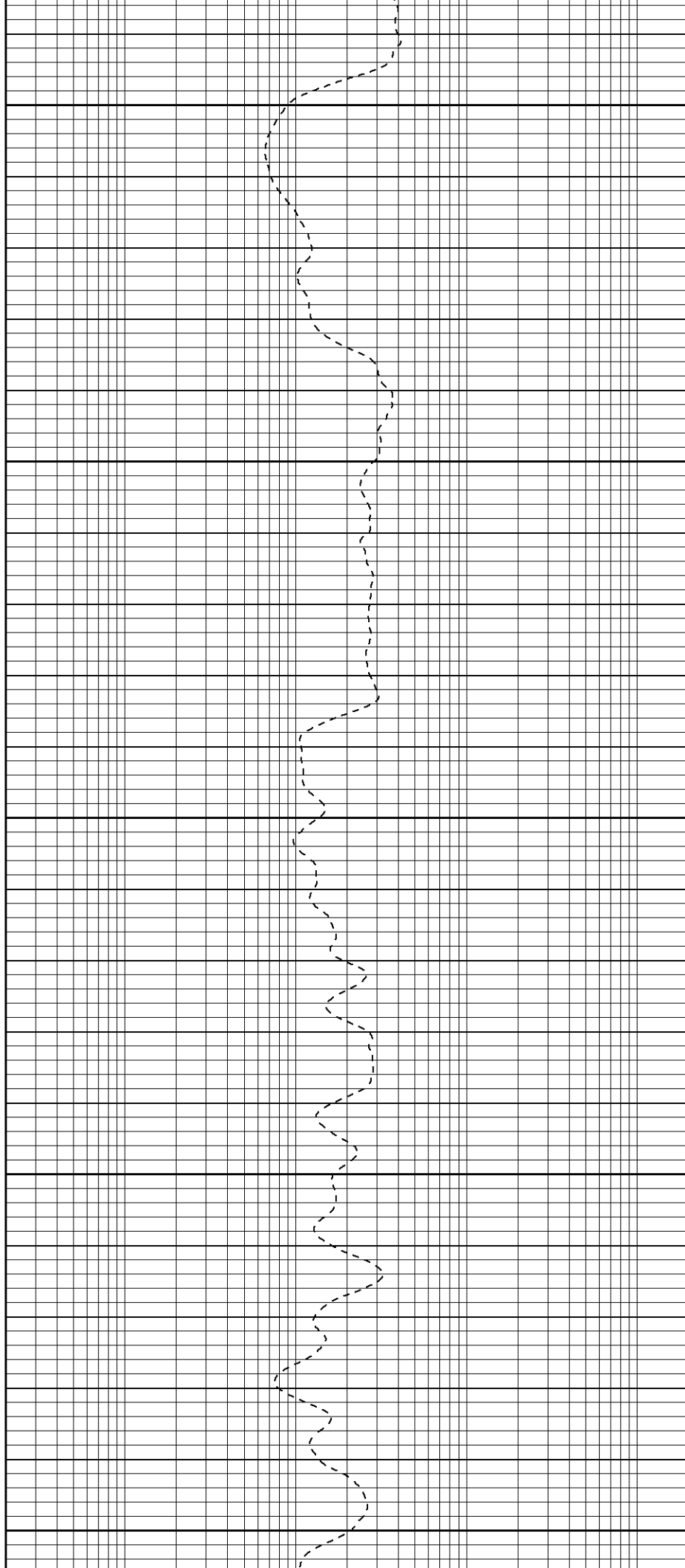
1350

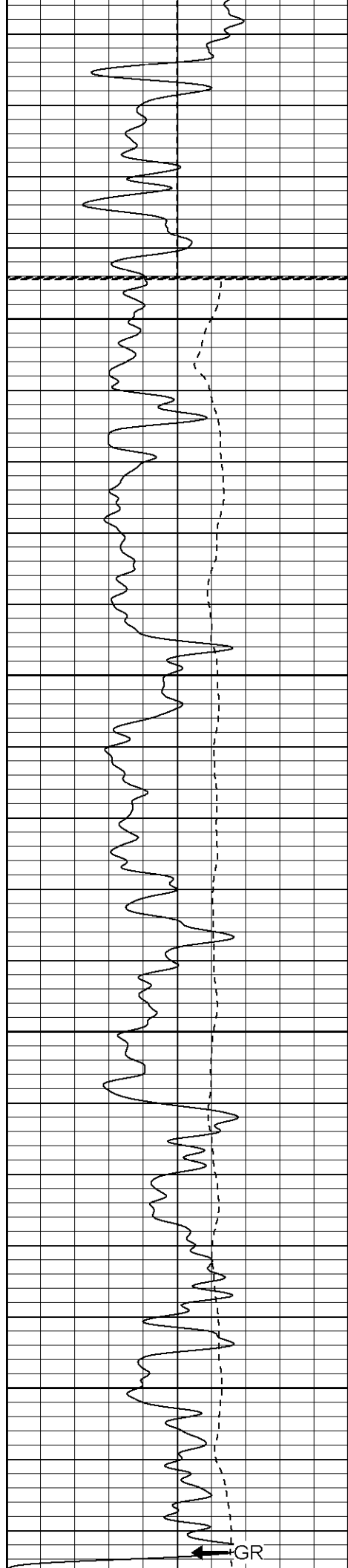
1400

1450

1500

1550





Fluid Level

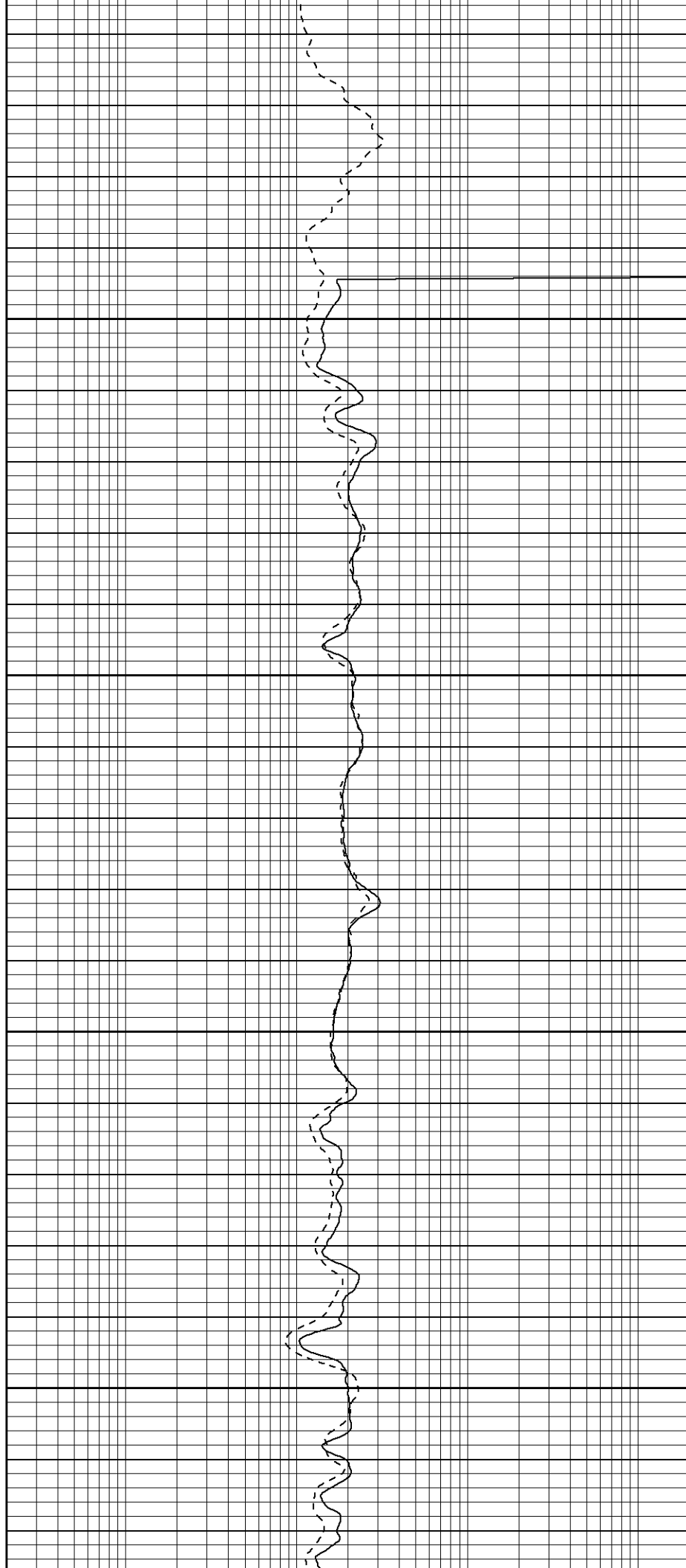
1600

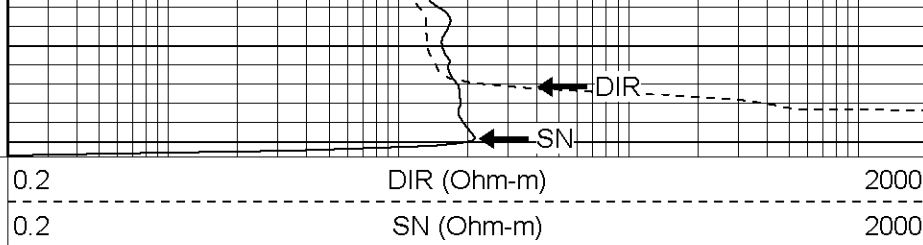
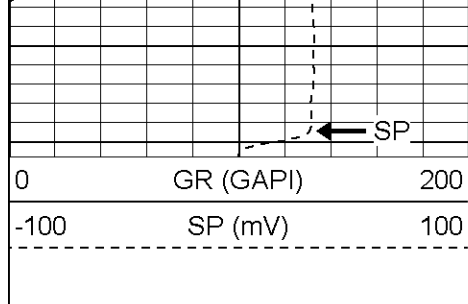
1650

1700

1750

GR

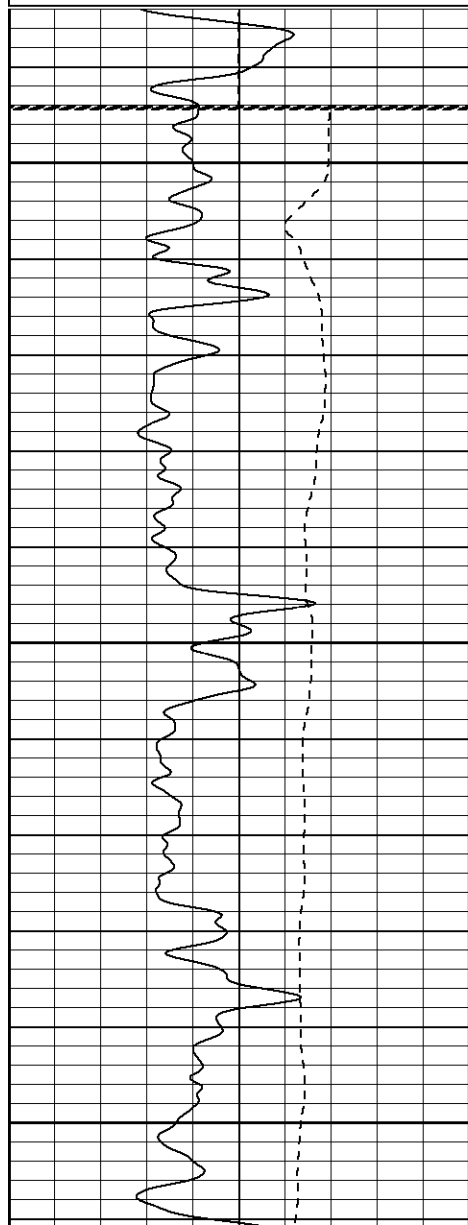
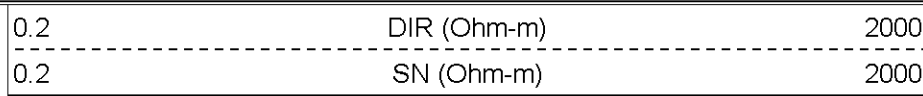
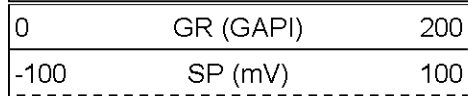




**Patterson**

# Repeat Section

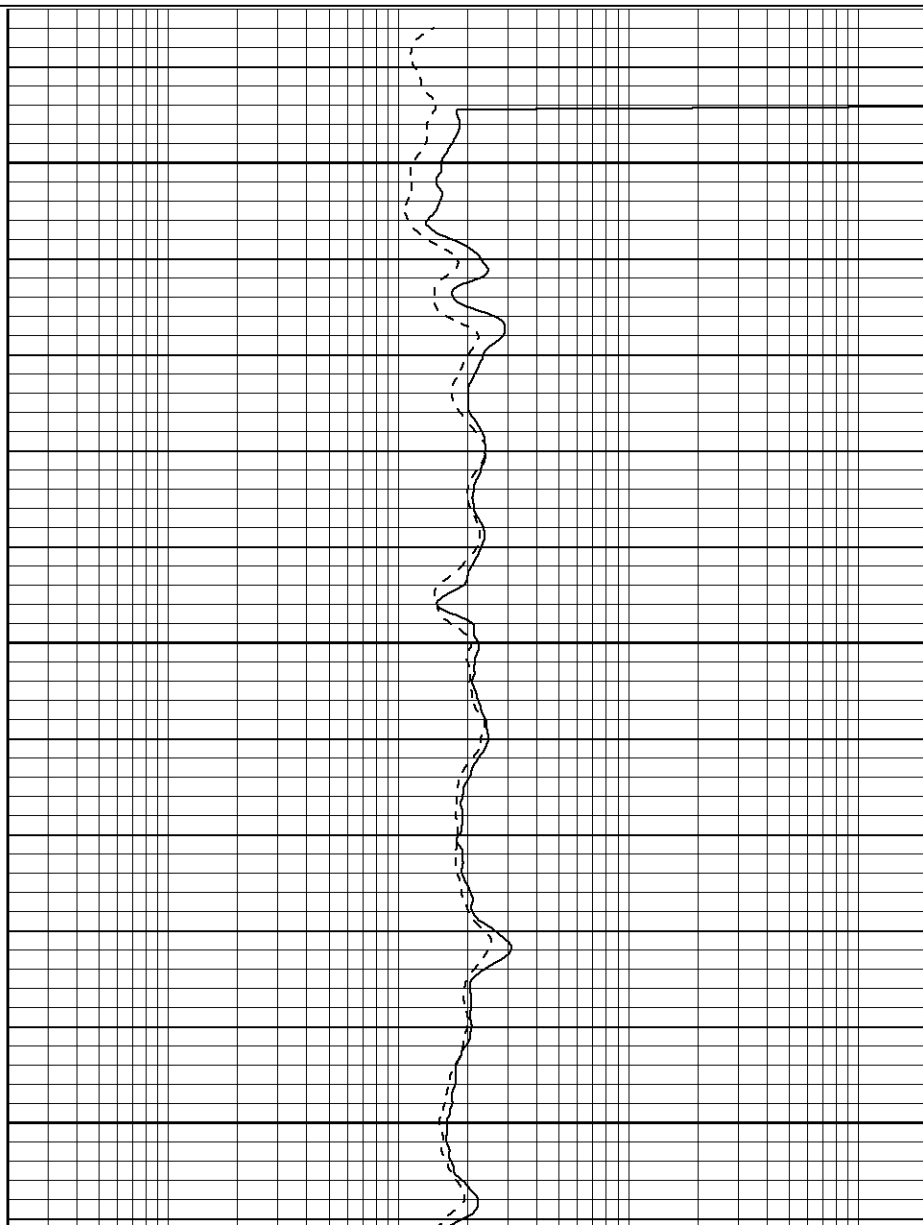
Database File: blackrabbitr.db  
 Dataset Pathname: pass1.1  
 Presentation Format: iel  
 Dataset Creation: Sat Oct 22 07:28:29 2005 by Calc Warrior 7.0 STD Ope  
 Charted by: Depth in Feet scaled 1:240

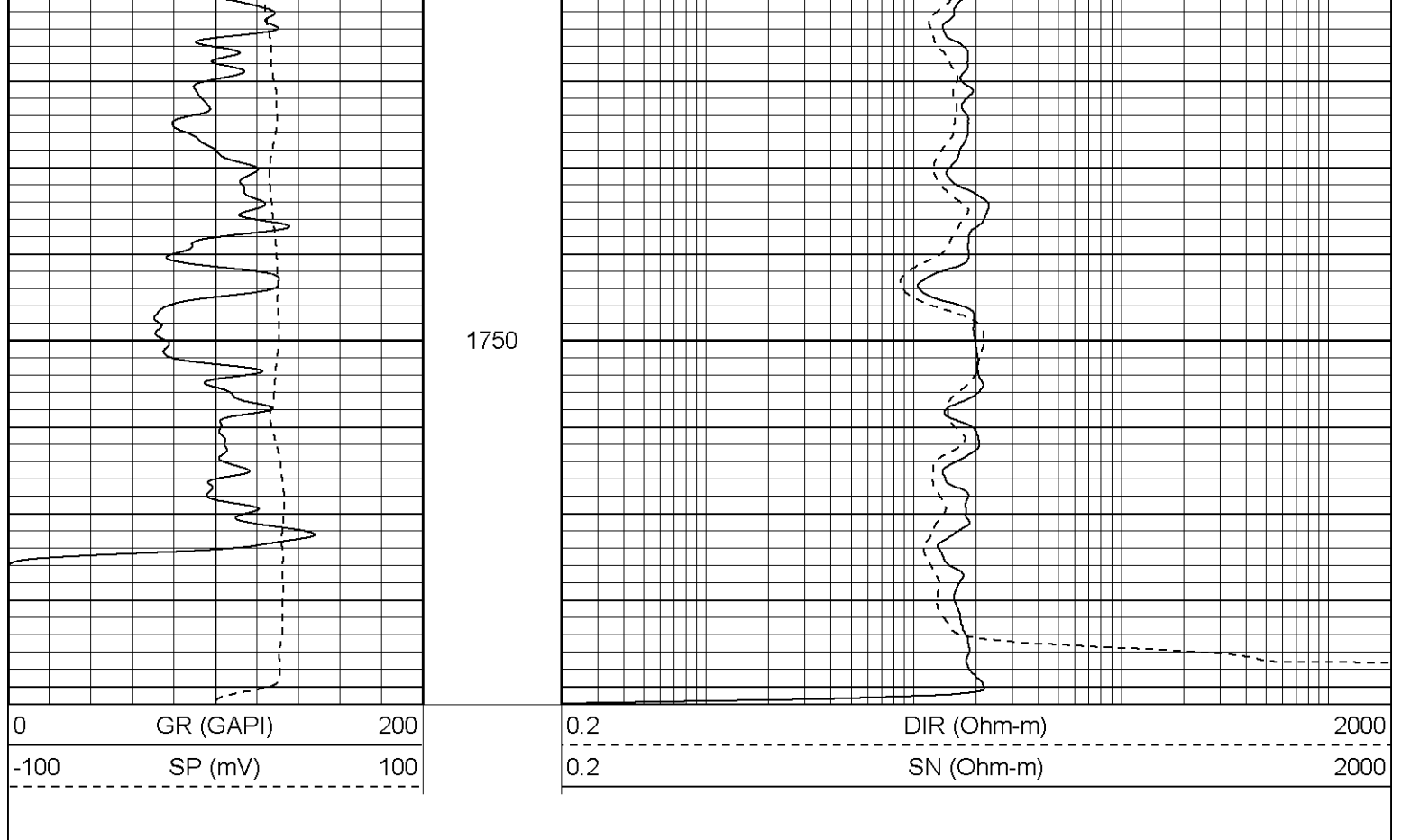


1600

1650

1700





#### Induction Tool Calibration Report

Serial Number: 902  
 Tool Model: G  
 Downhole Cal Performed: Sat Oct 22 05:34:15 2005  
 Surface Cal Performed: Thu Oct 20 15:34:55 2005

Surface Calibration:	Air	Loop	
Conductivity Reference:	0.000	450.000	mmho
Conductivity Reading:	0.001	0.634	V
Internal Reference:	Zero	Cal	
Conductivity Reference:	0.000	500.000	mmho
Conductivity Reading:	0.002	0.633	V

Downhole Calibration:	Internal Zero	Internal Cal	
Conductivity Reference:	0.004	449.717	mmho
Conductivity Reading:	8.552	476.379	V
Short Normal Reference:	0.000	17.000	Ohm-m
Short Normal Reading:	0.011	0.207	V

Results:	Gain	Offset
Loop Conductivity:	711.236	-0.730
Downhole Correction:	0.961	-8.217
Short Normal Resistivity:	95.000	0.000

#### Gamma Ray Calibration Report

Serial Number: 2001  
 Tool Model: OH  
 Performed: Wed Oct 05 13:37:01 2005

Calibrator Value: 1.0 GAPI

Background Reading: 0.0 cps  
 Calibrator Reading: 1.0 cps



GAPI/cps

Sensor	Offset (ft)	Schematic	Description	Len (ft)	OD (in)	Wt (lb)
CHD	19.50		None	0.75	1.50	5.00
GR	17.25		GR-OH (2001) SIE	3.50	3.25	40.00
DIC	6.89		IEL-G (902)	15.25	4.00	178.00
SP	1.50					
SN	1.00					
		Dataset:	/field/well/run1/_plots/_jobs_/sil			
		Total Length:	19.50 ft			
		Total Weight:	223.00 lb			
		O.D.	4.00 in			