



**SUPERIOR**  
Black Lick, Pa.  
Mercer, Pa.  
Wooster, Oh.  
Cleveland, Ok.  
Trinidad, Co.

## DUAL INDUCTION LOG

Company XTO Energy Inc.  
Well Golden Eagle 30-10  
Field Purgatoire River  
County Las Animas State Colorado

Location: API # : 05 071 09278 00

1593' FSL & 2345' FEL

SEC 30 TWP 33S RGE 67W

Permanent Datum Ground Level Elevation 7874'  
Log Measured From Ground Level  
Drilling Measured From Ground Level

Other Services  
CDL  
NEUTRON  
Elevation  
K.B. -----  
D.F. -----  
G.L. 7874'

Date 1-27-08

Run Number One

Depth Driller 2585'

Depth Logger 2570'

Bottom Logged Interval 2568'

Top Log Interval Surface Casing

Casing Driller 8 5/8" @ 1076'

Casing Logger 1084'

Bit Size 7 7/8"

Type Fluid in Hole Water

Density / Viscosity ///

pH / Fluid Loss ///

Source of Sample ///

Rm @ Meas. Temp ///

Rmf @ Meas. Temp ///

Rmc @ Meas. Temp ///

Source of Rmf / Rmc ///

Rm @ BHT ///

Time Circulation Stopped 2:00 A.M.

Time Logger on Bottom 5:30 A.M.

Maximum Recorded Temperature 104 DEG F

Equipment Number T697

Location Trinidad

Recorded By J. Cappellucci

Witnessed By Mr. Don Johnson

<<< Fold Here >>>

All interpretations are opinions based on inferences from electrical or other measurements and we cannot and do not guarantee the accuracy or correctness of any interpretation, and we shall not, except in the case of gross or willful negligence on our part, be liable or responsible for any loss, costs, damages, or expenses incurred or sustained by anyone resulting from any interpretation made by any of our officers, agents or employees. These interpretations are also subject to our general terms and conditions set out in our current Price Schedule.

### Comments

Well Directions:  
Hwy 12 , second entrance to Bosque, across tracks, stay left at Y,  
to Cerilla Canyon, through green gate, take first right, drive through one location,  
take road all the way to the top, end on location.



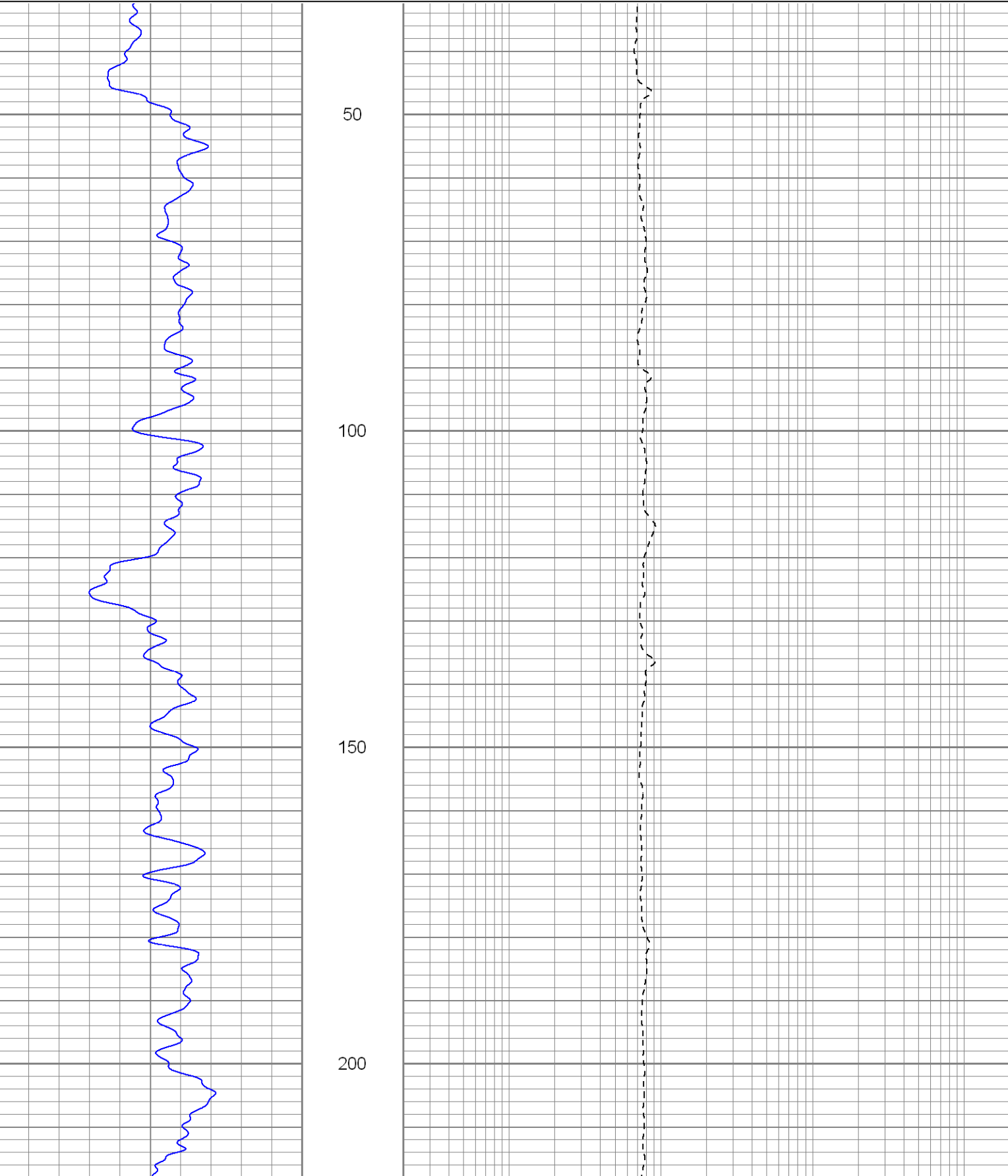
**SUPERIOR**  
Black Lick, Pa.  
Mercer, Pa.  
Wooster, Oh.  
Cleveland, Ok.  
Trinidad, Co.

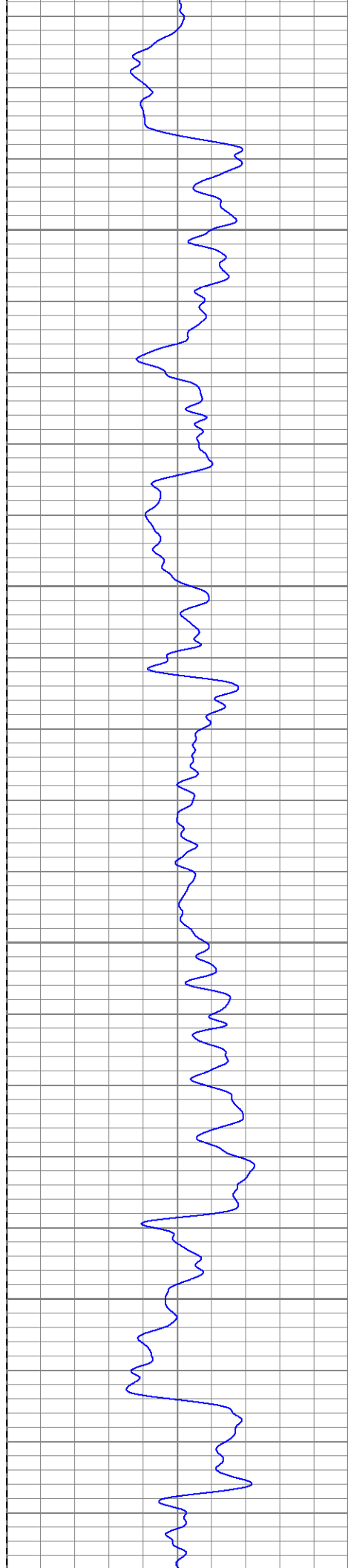
# Main Pass

Database File: xtoge3010.db  
Dataset Pathname: pass2.1  
Presentation Format: dil  
Dataset Creation: Sun Jan 27 07:34:23 2008 by Calc Open-Cased 070814  
Charted by: Depth in Feet scaled 1:240

0	GR (GAPI)	200
-200	SP (mV)	0

0.2	RILM (Ohm-m)	2000
0.2	RILD (Ohm-m)	2000
0.2	RLL3 (Ohm-m)	2000



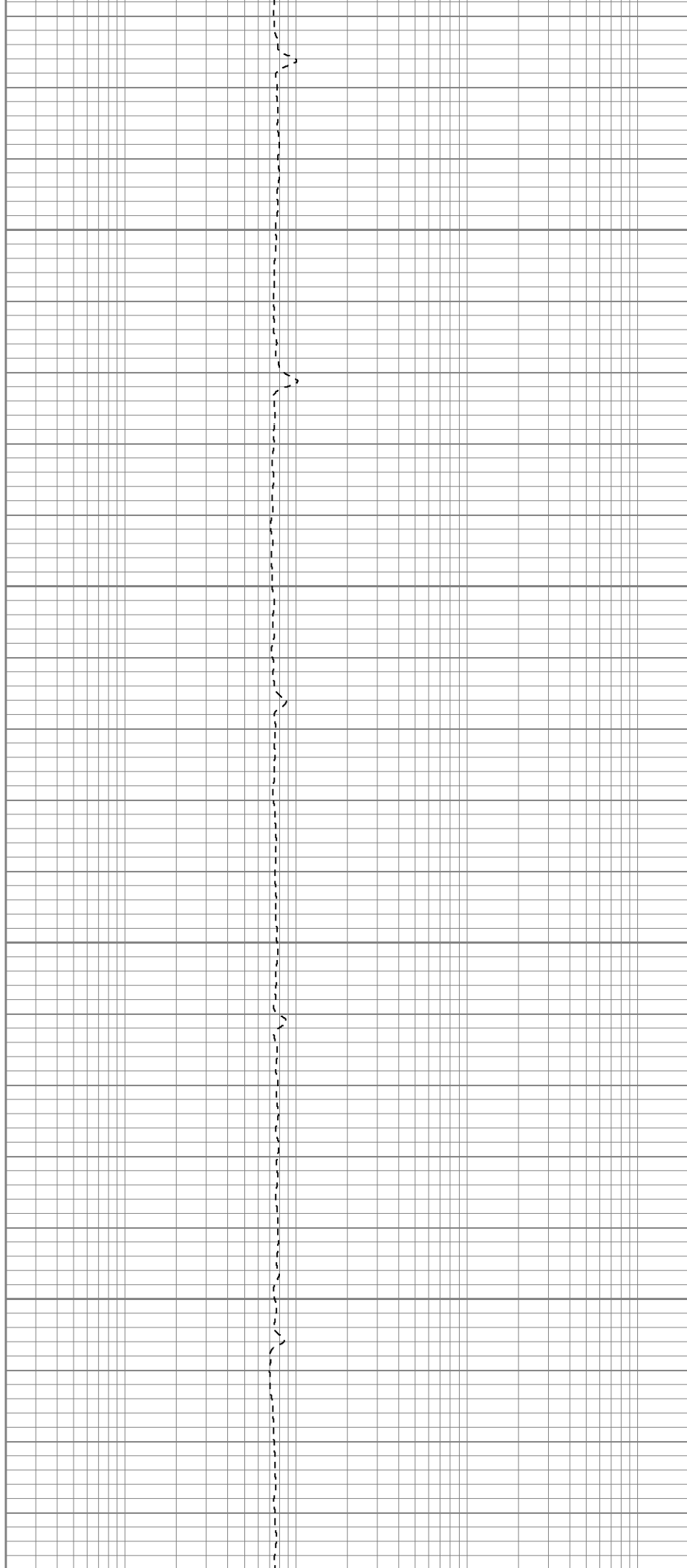


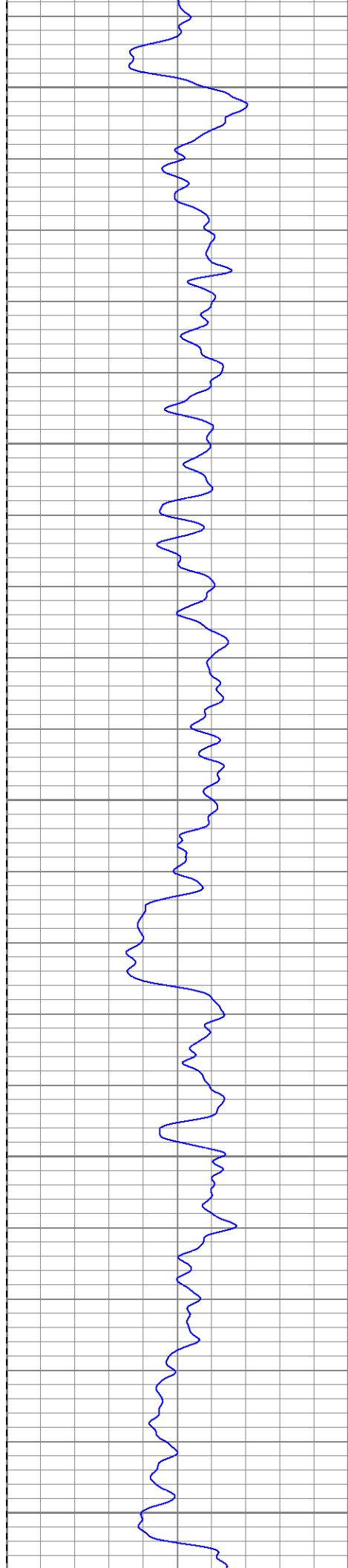
250

300

350

400





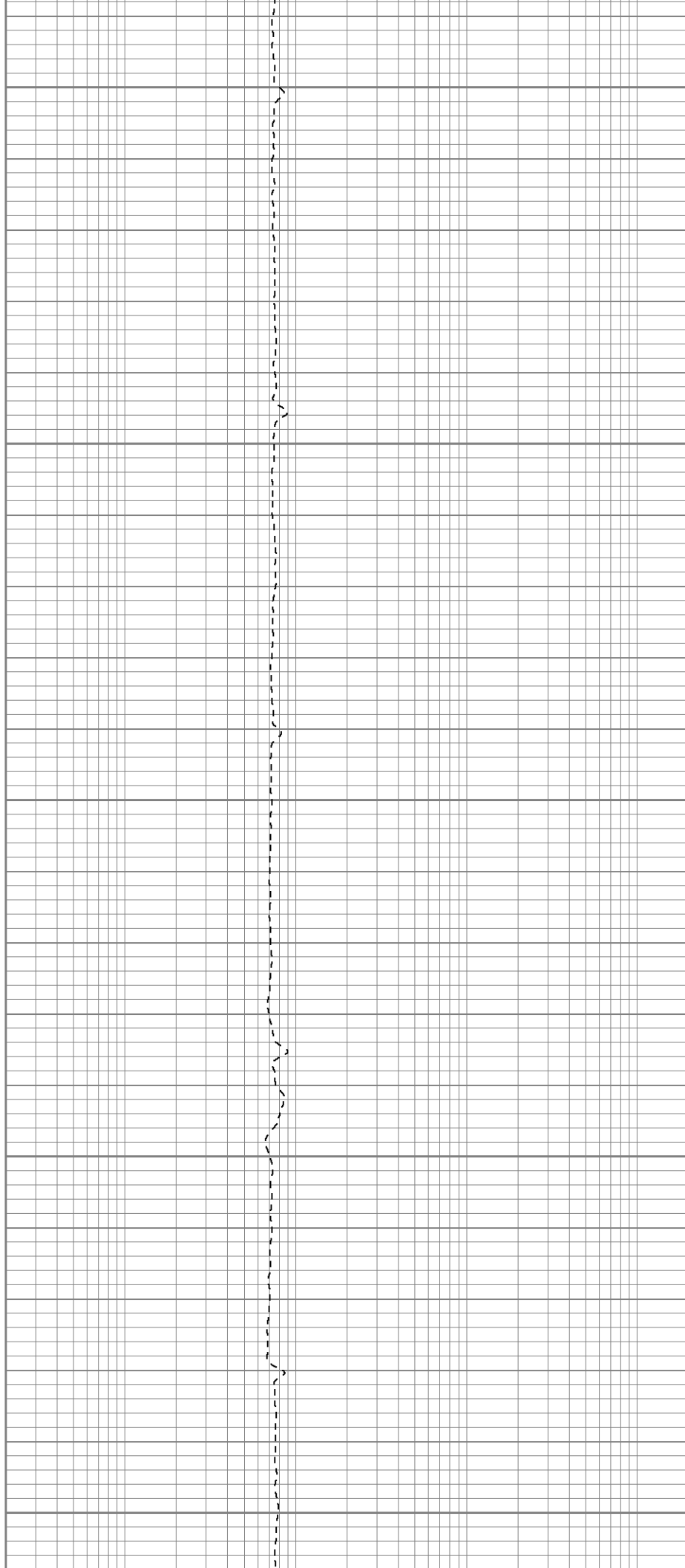
450

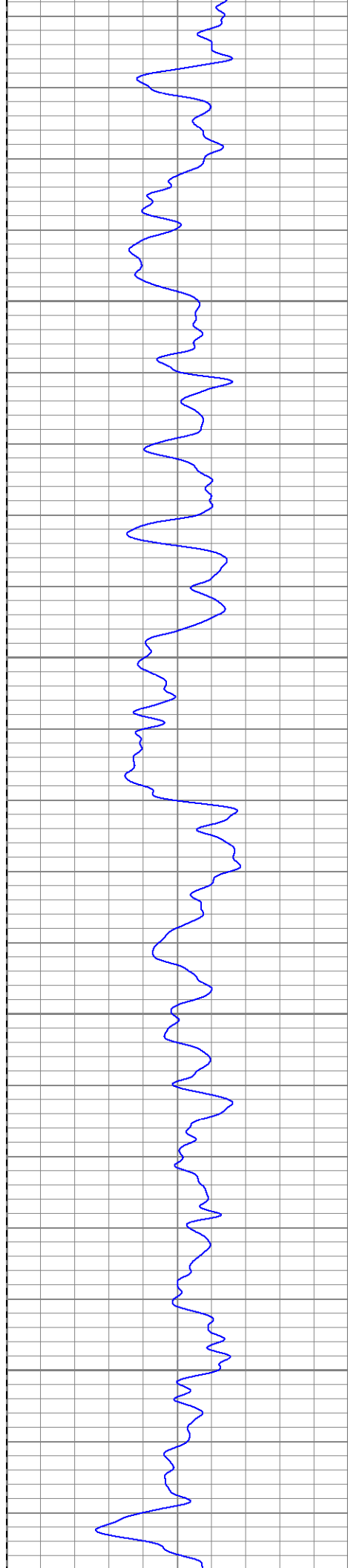
500

550

600

650



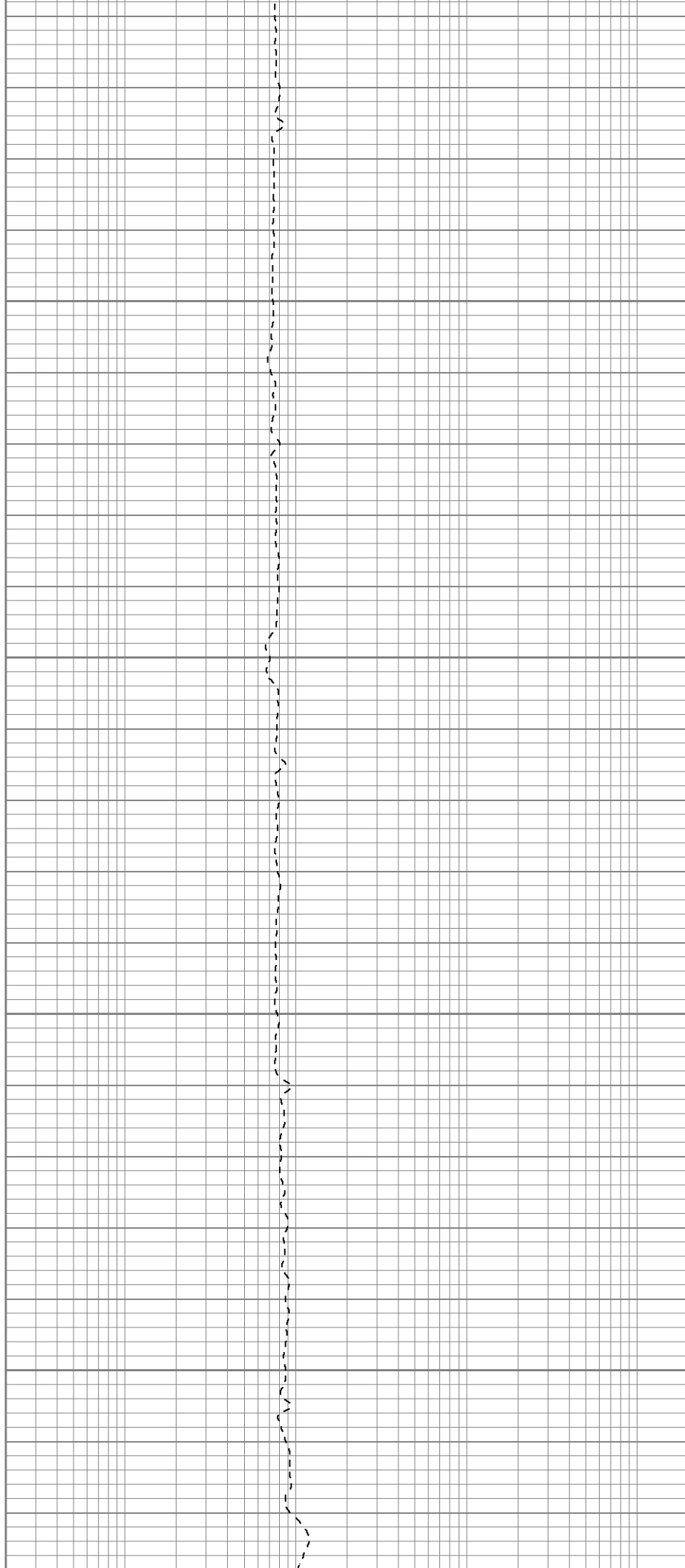


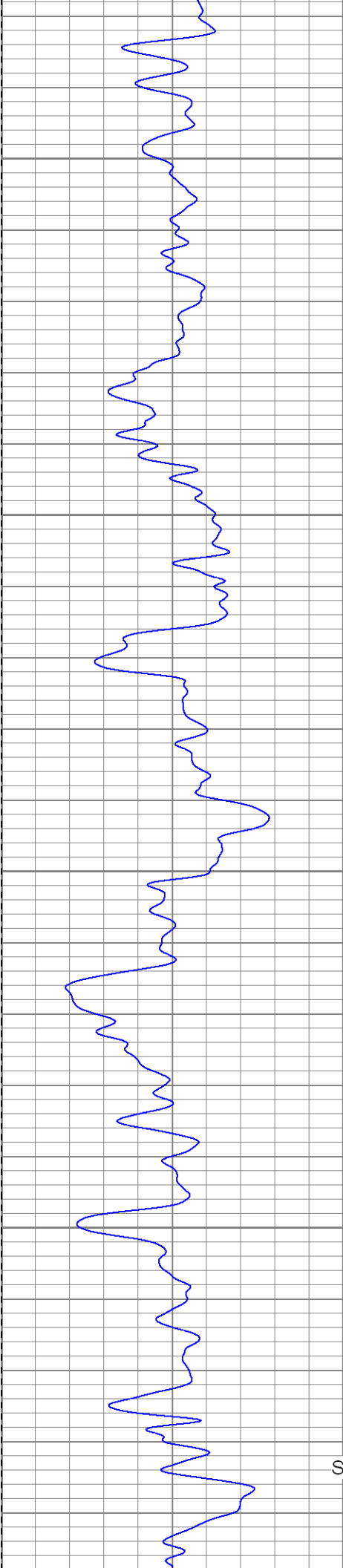
700

750

800

850





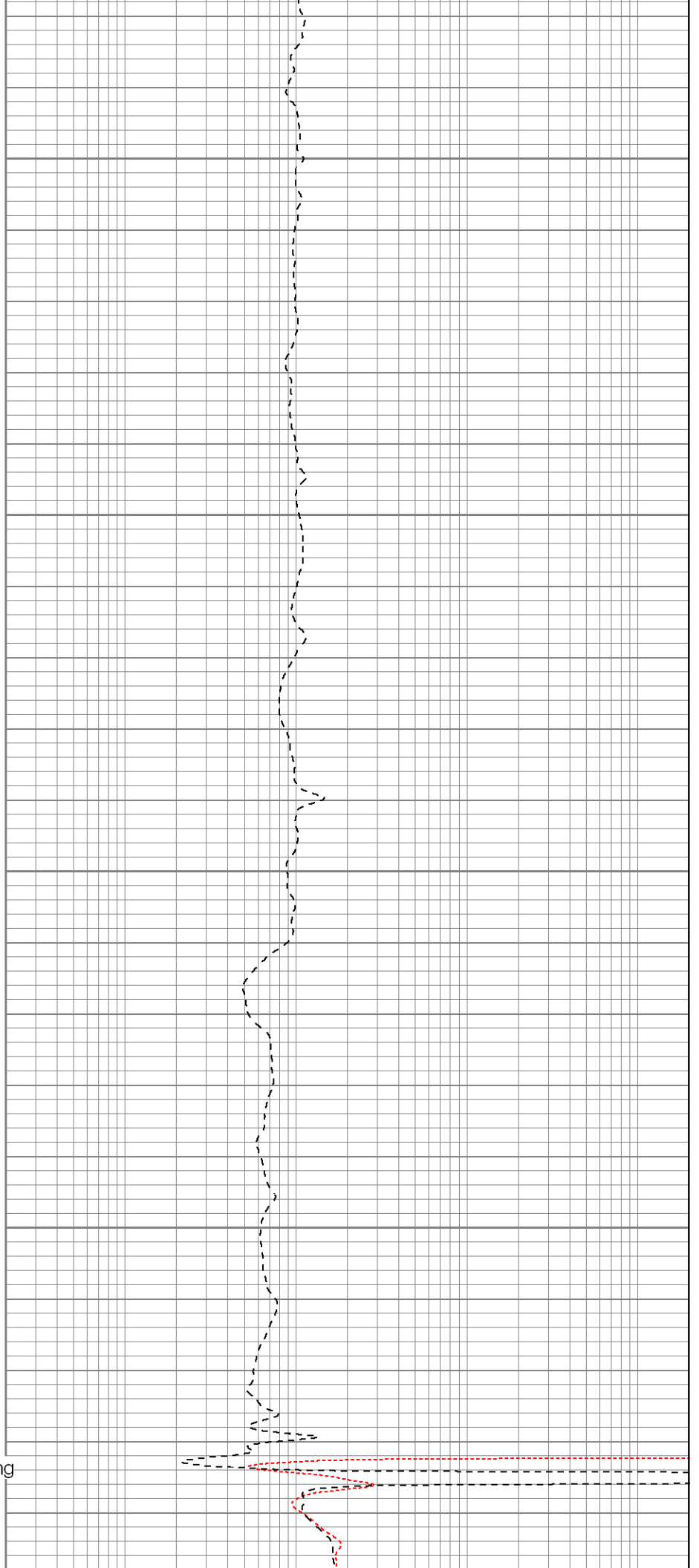
900

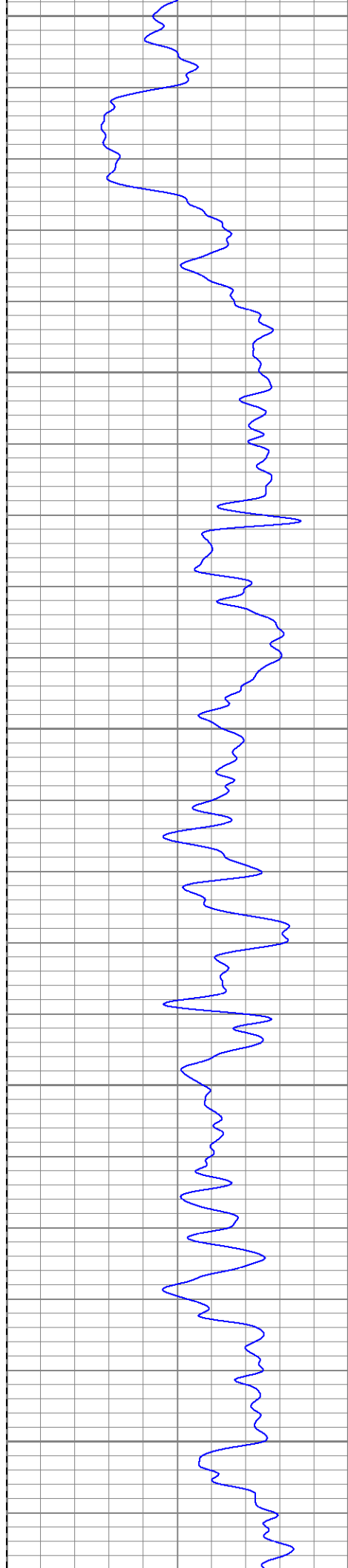
950

1000

1050

Surface Casing





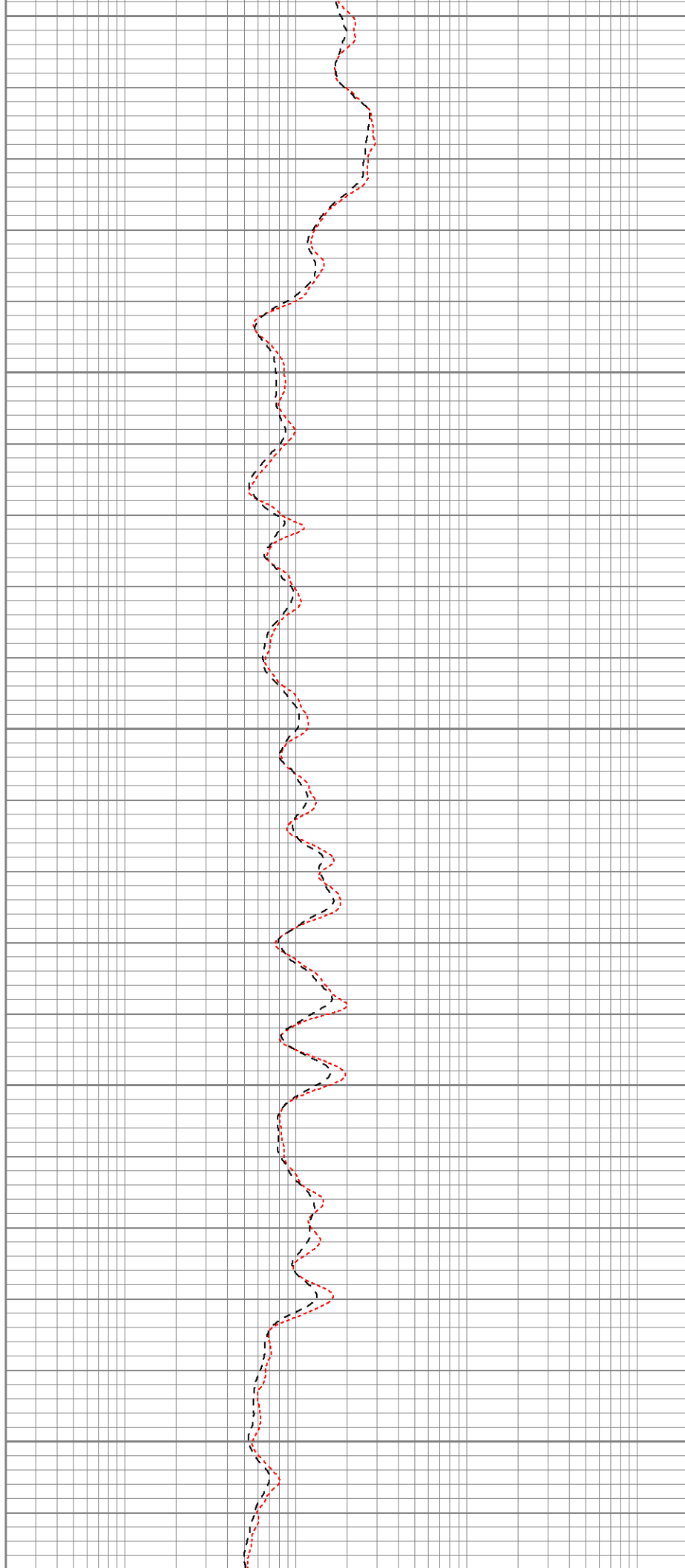
1100

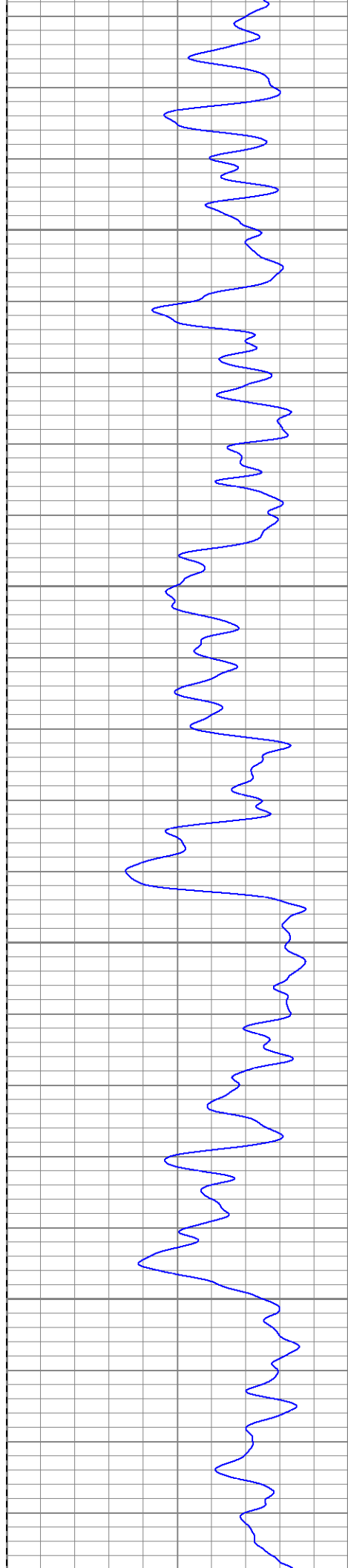
1150

1200

1250

1300



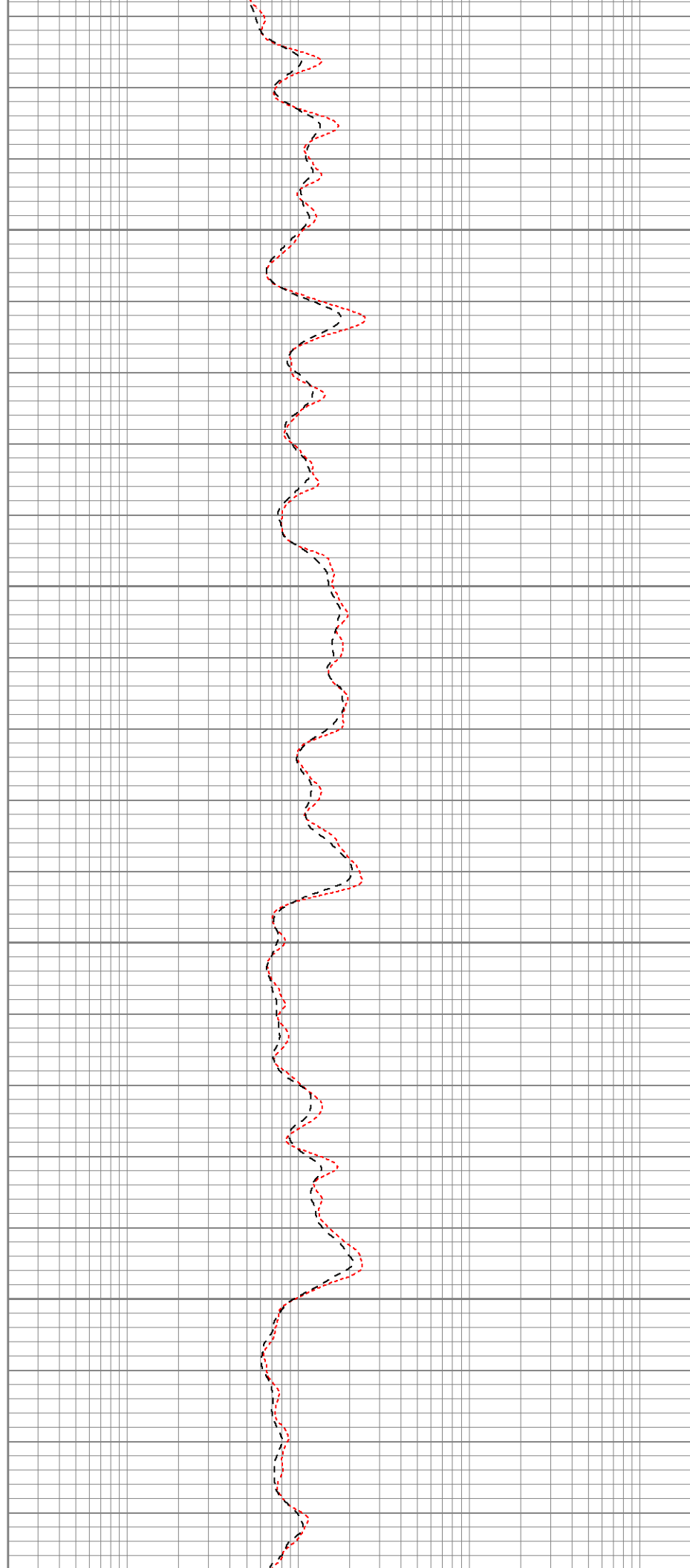


1350

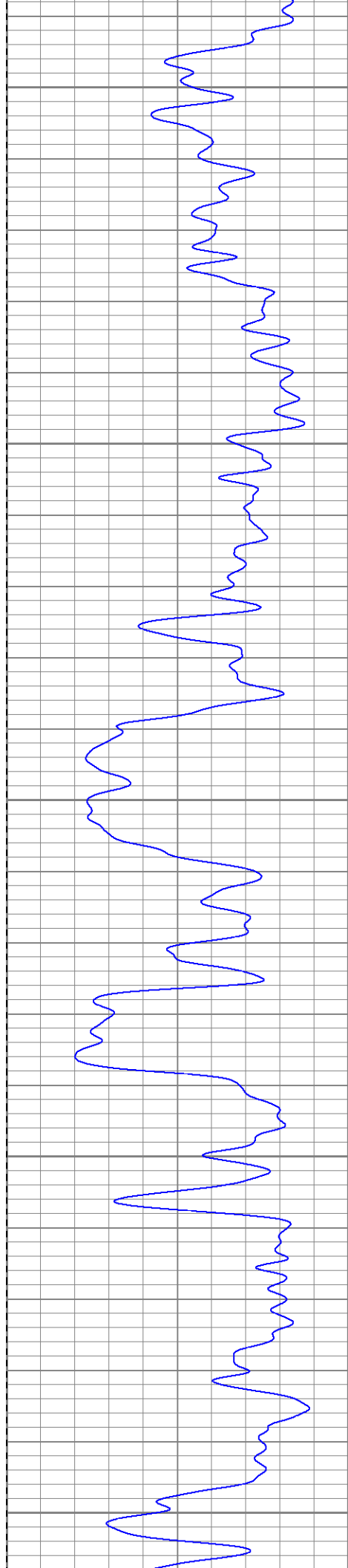
1400

1450

1500







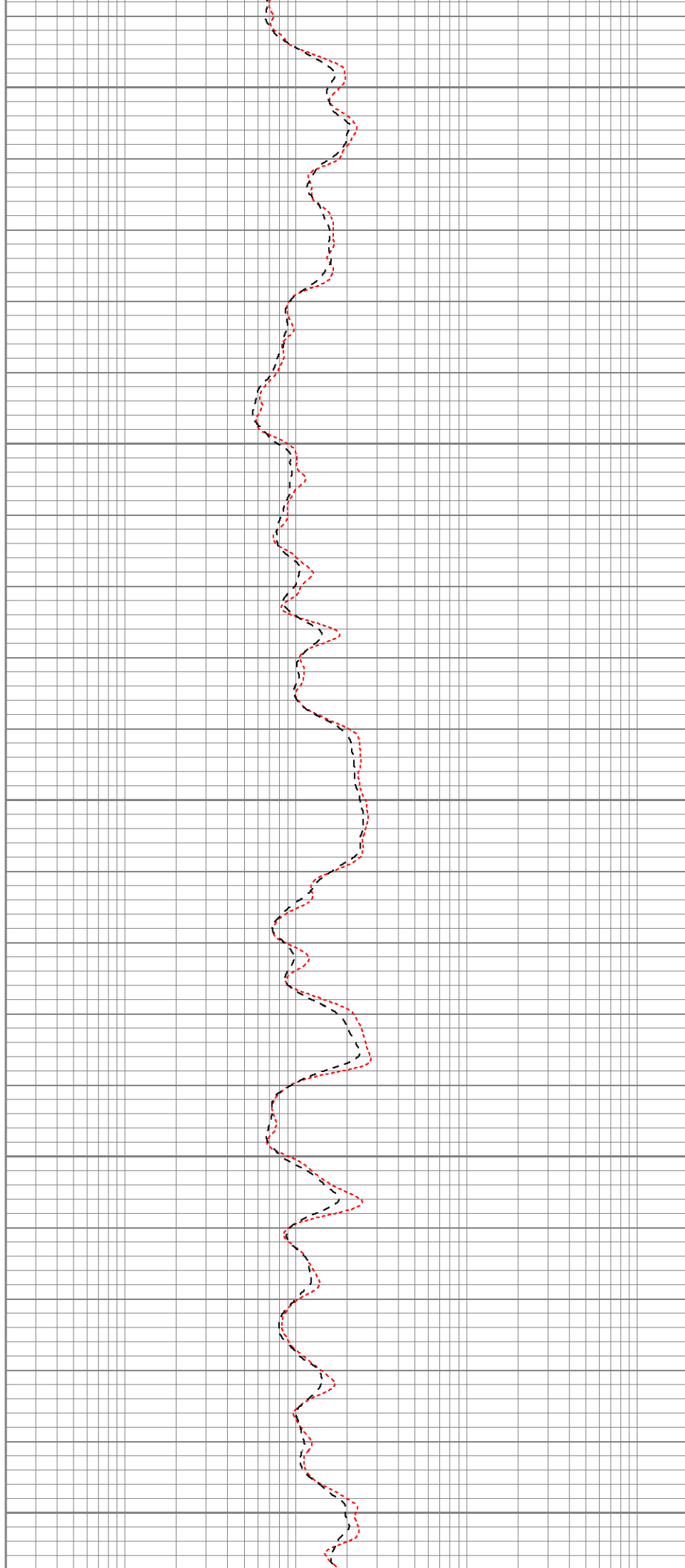
1550

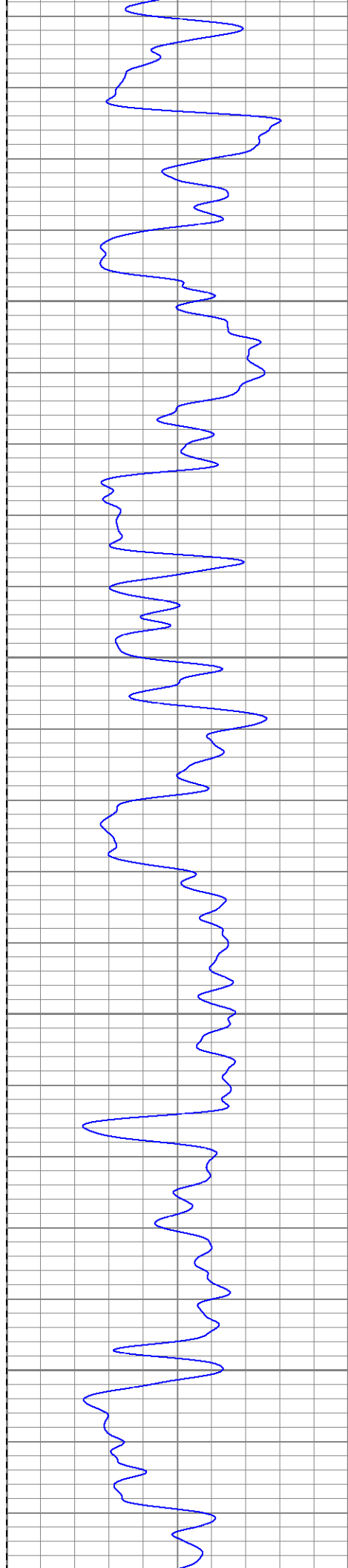
1600

1650

1700

1750



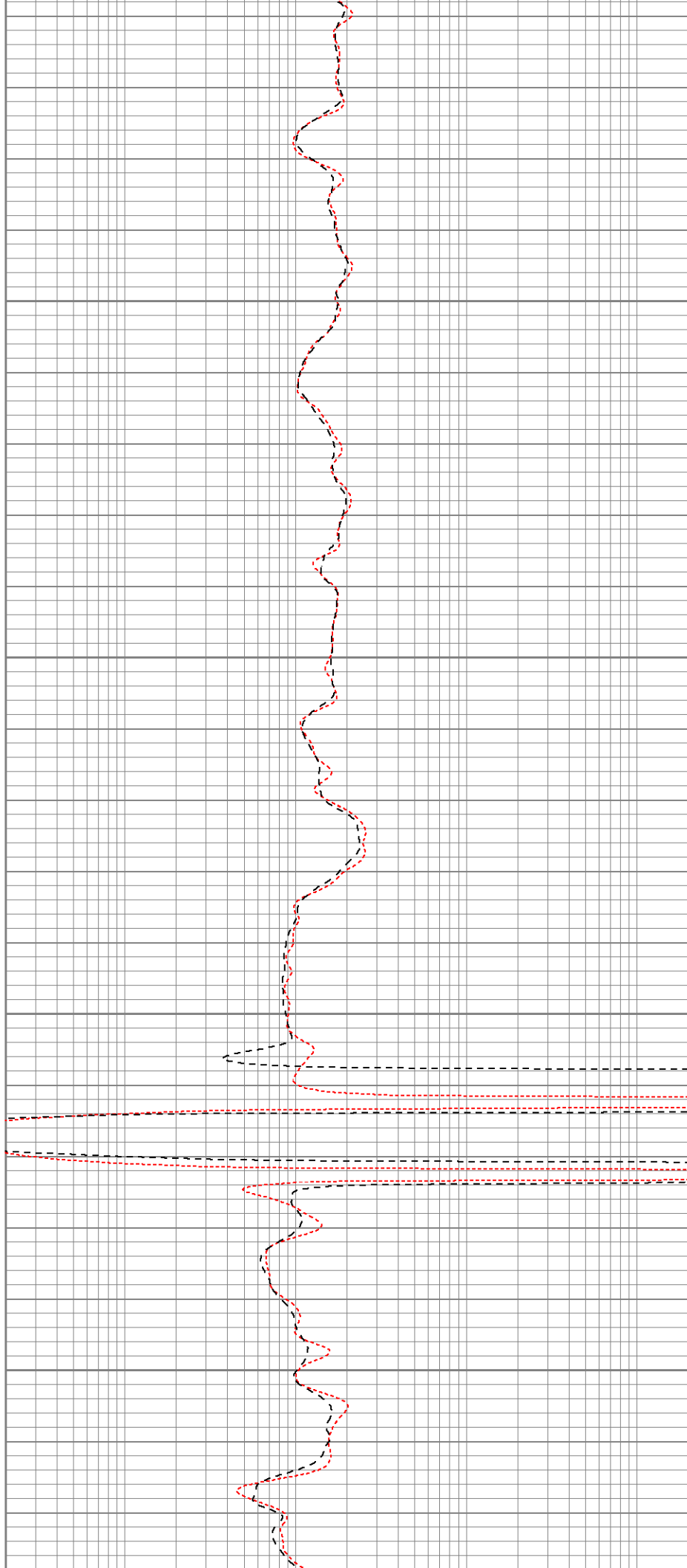


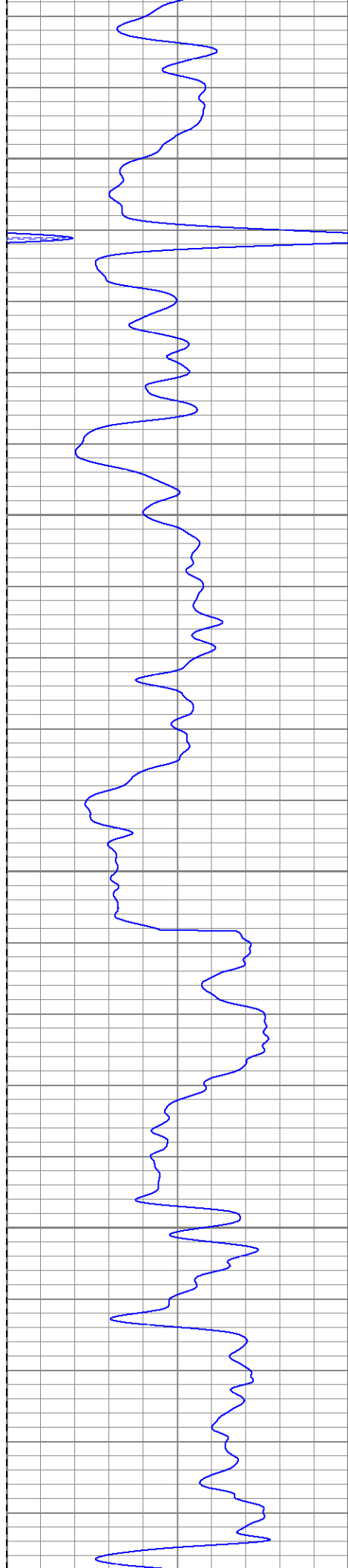
1800

1850

1900

1950



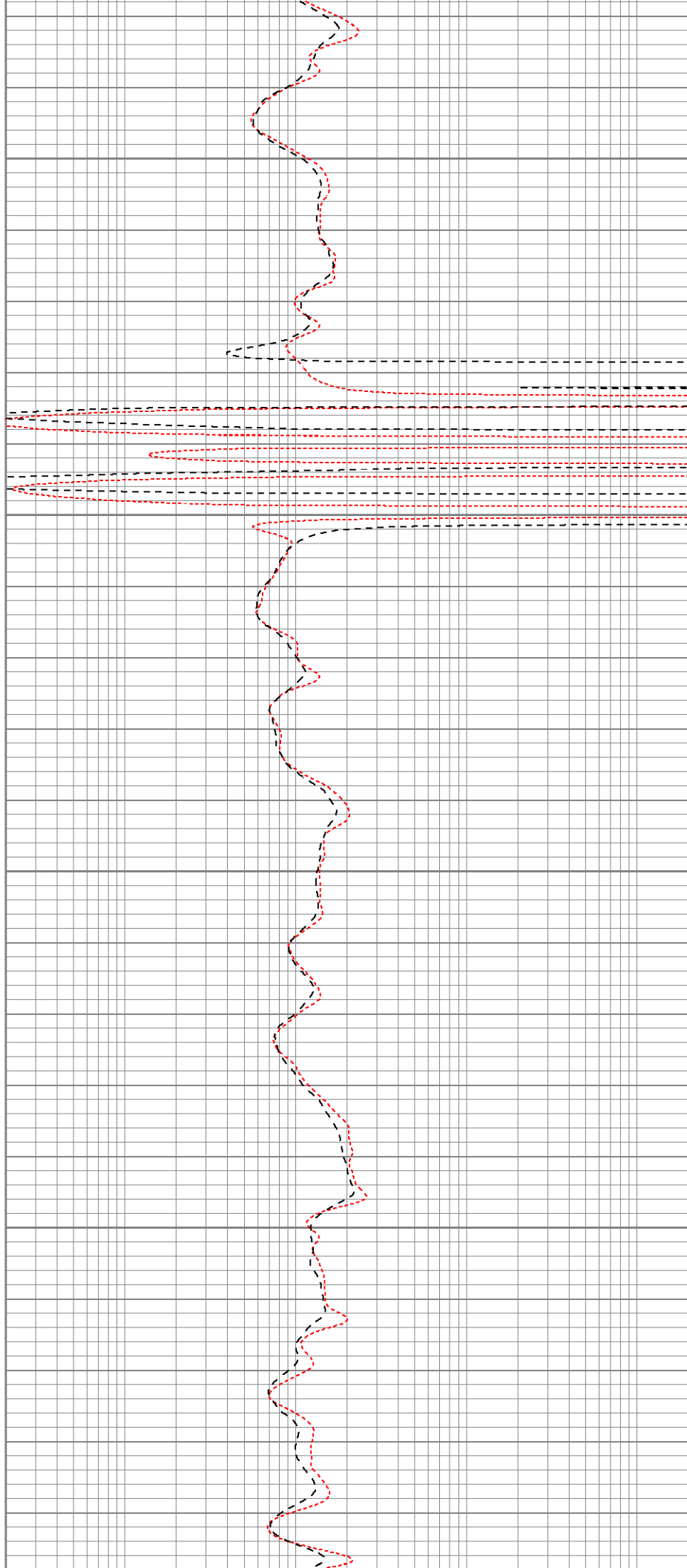


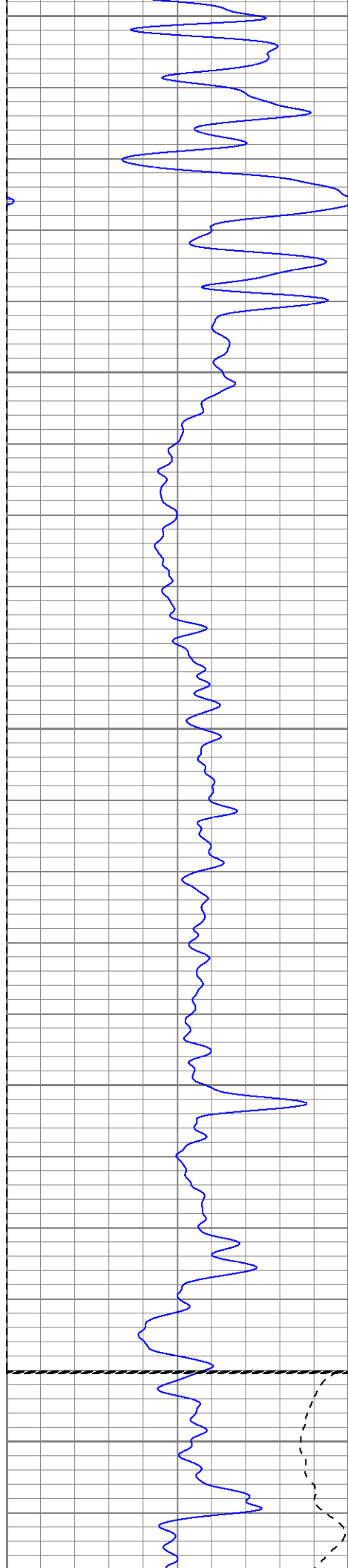
2000

2050

2100

2150





2200

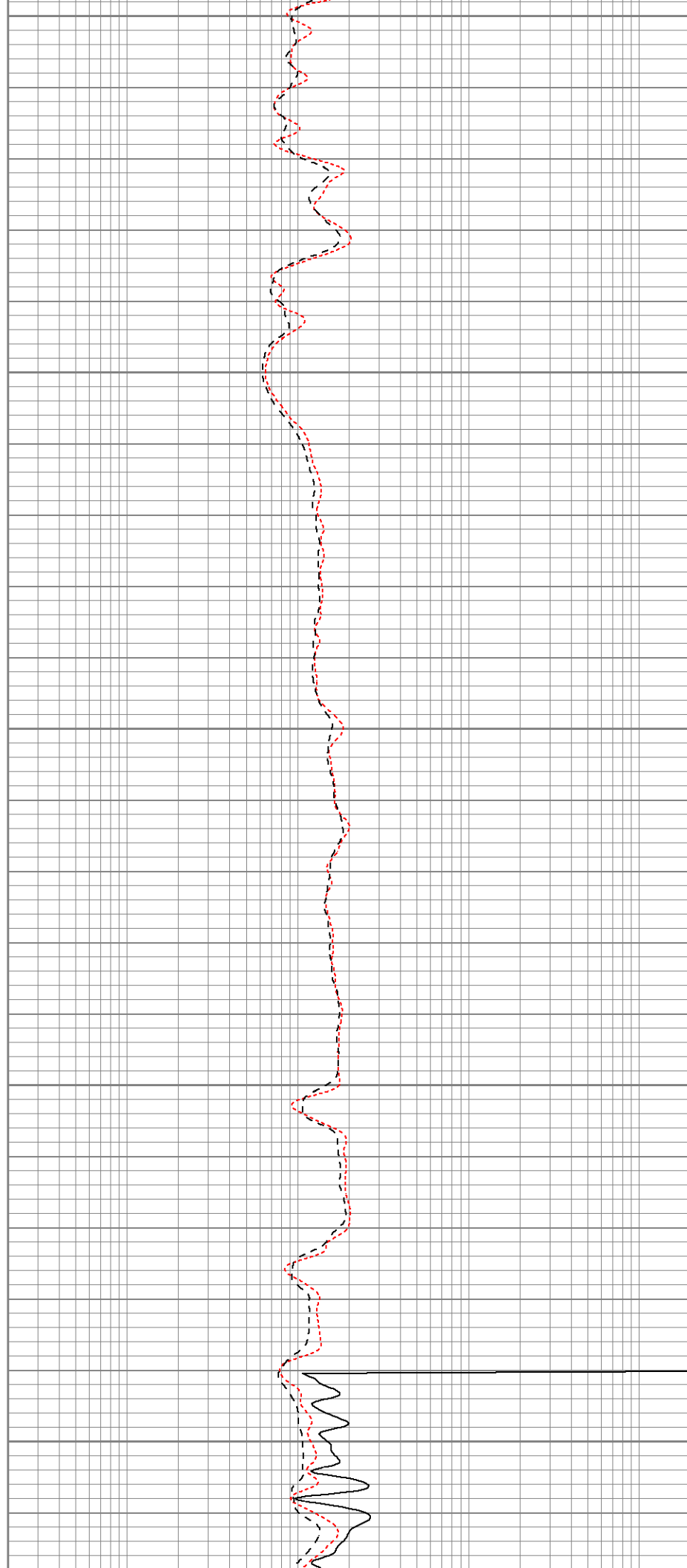
2250

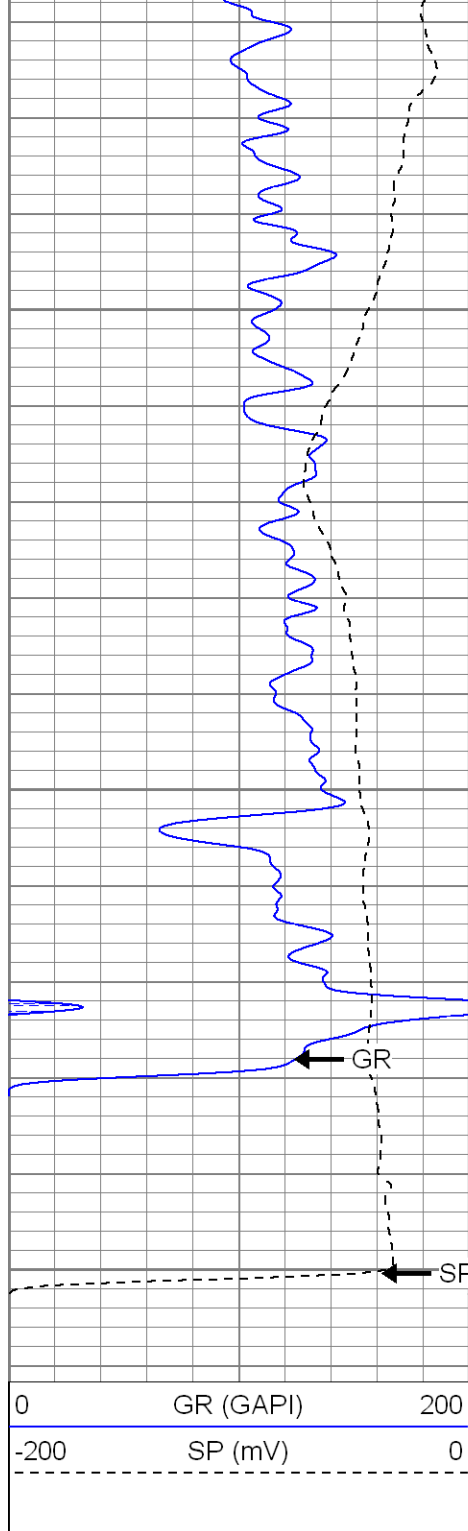
2300

2350

2400

Fluid Level





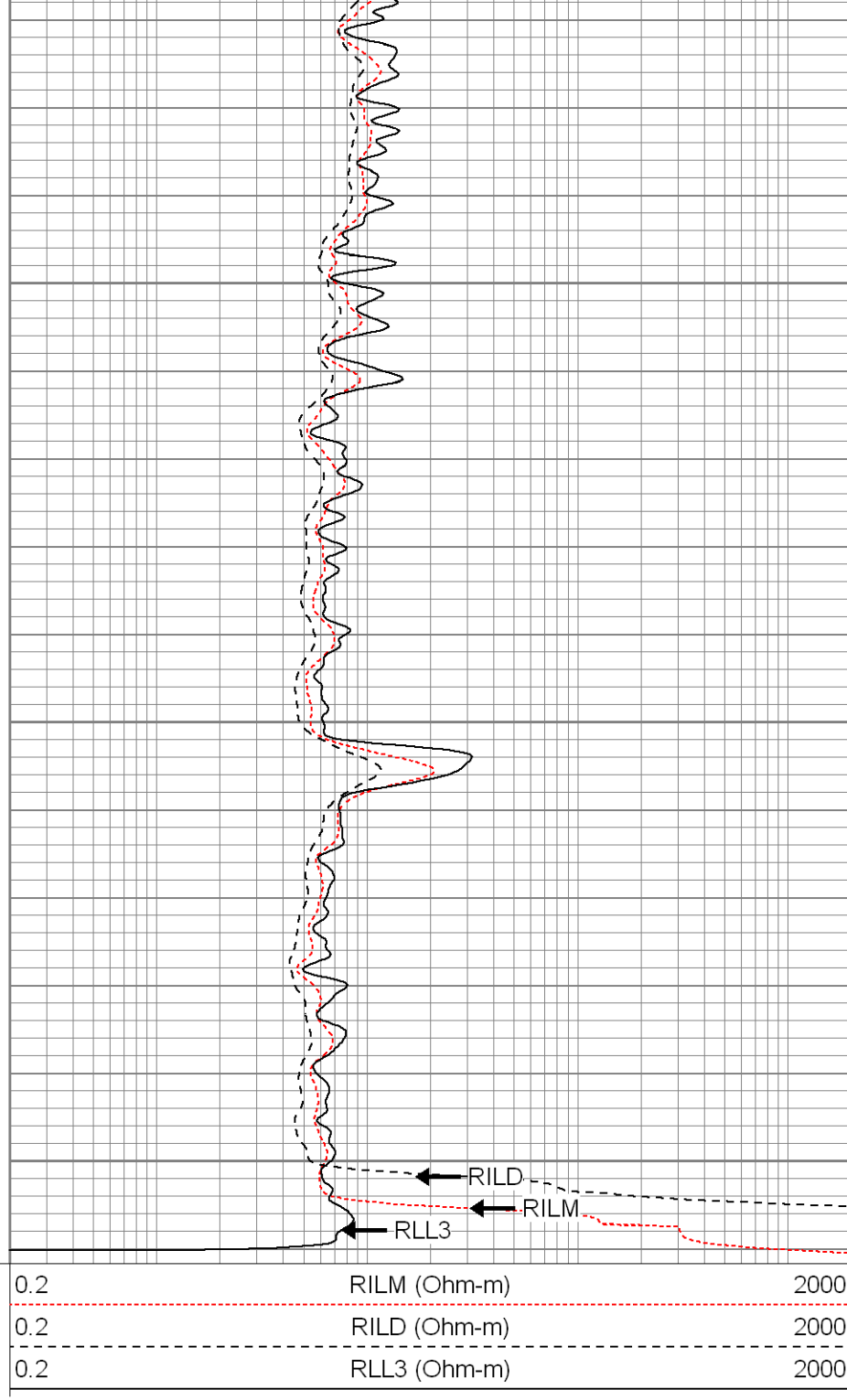
2450

2500

2550

GR

SP



RILD

RILM

RLL3

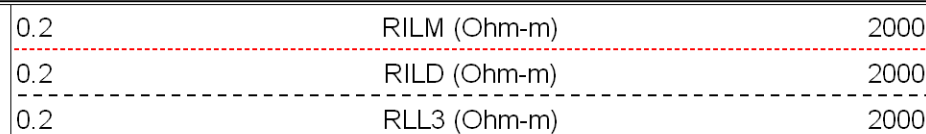
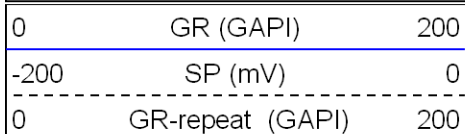


**SUPERIOR**

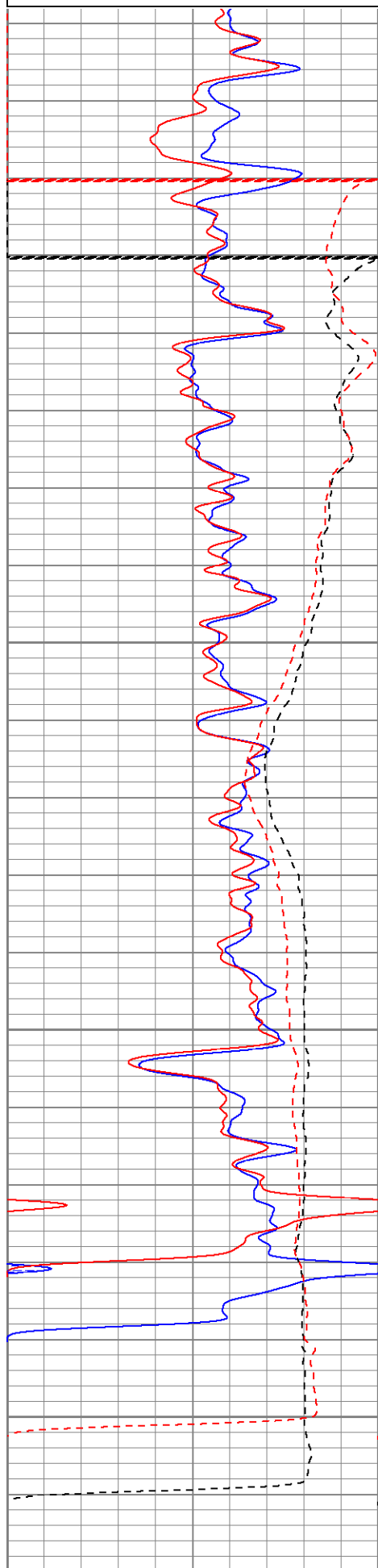
Black Lick, Pa.  
Mercer, Pa.  
Wooster, Oh.  
Cleveland, Ok.  
Trinidad, Co.

# Repeat Pass

Database File: xtoge3010.db  
Dataset Pathname: pass1.1  
Presentation Format: dil  
Dataset Creation: Sun Jan 27 06:31:08 2008 by Calc Open-Cased 070814  
Charted by: Depth in Feet scaled 1:240



-200 SP-repeat (mV) 0



2400

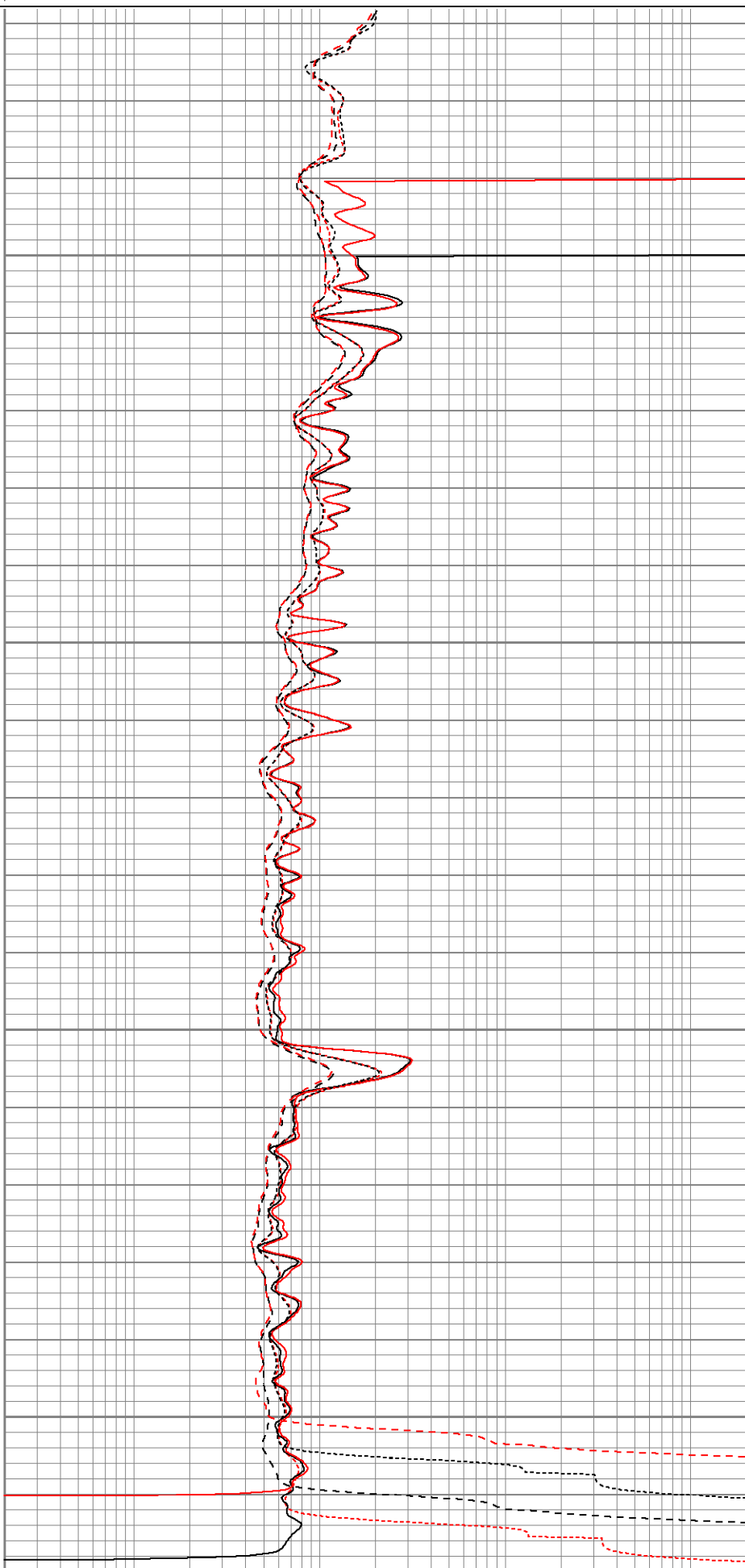
2450

2500

2550

0 GR (GAPI) 200

0.2 RLL3-repeat (Ohm-m) 2000  
0.2 RILM-repeat (Ohm-m) 2000  
0.2 RILD-repeat (Ohm-m) 2000



0.2 RILM (Ohm-m) 2000

GR (GAPI)		200
-200	SP (mV)	0
0	GR-repeat (GAPI)	200
-200	SP-repeat (mV)	0

0.2	RILM (Ohm-m)	2000
0.2	RILD (Ohm-m)	2000
0.2	RLL3 (Ohm-m)	2000
0.2	RLL3-repeat (Ohm-m)	2000
0.2	RILM-repeat (Ohm-m)	2000
0.2	RILD-repeat (Ohm-m)	2000

Calibration Report	
Database File:	xtoge3010.db
Dataset Pathname:	pass1
Dataset Creation:	Sun Jan 27 05:31:16 2008 by Log Open-Cased 070814

Dual Induction Calibration Report
-----------------------------------

Serial-Model:	5375-G
Surface Cal Performed:	Thu Jan 10 17:04:29 2008
Downhole Cal Performed:	Thu Jan 10 17:05:58 2008

Surface Calibration								
Readings				References			Results	
Loop:	Air	Loop		Air	Loop		m	b
Deep	0.001	0.621	V	0.000	500.000	mmho-m	807.348	-1.148
Medium	0.005	0.745	V	0.000	550.000	mmho-m	743.100	-3.588
Internal:	Zero	Cal		Zero	Cal		m	b
Deep	0.001	0.621	V	0.000	500.000	mmho-m	806.966	-1.153
Medium	0.005	0.745	V	0.000	550.000	mmho-m	742.904	-3.460

Downhole Calibration								
Readings				References			Results	
Internal:	Zero	Cal		Zero	Cal		m	b
Deep	0.177	500.330	mmho-m	0.005	500.241	mmho-m	1.000	-0.172
Medium	-0.163	549.964	mmho-m	-0.127	550.018	mmho-m	1.000	0.036
Shallow	2.506	0.009	V	500.000	2.000	Ohm-m	125.000	-3.000

Compensated Density Calibration Report	
--	--

Serial-Model:	2118-poilex
Source / Verifier:	/
Master Calibration Performed:	Tue Jan 08 02:47:05 2008

Master Calibration					
Density			Far Detector	Near Detector	
Magnesium	1.710	g/cc	718.08	683.29	cps
Aluminum	2.590	g/cc	158.70	455.82	cps
Spine Angle = 74.99			Density/Spine Ratio = 0.563		
Size			Reading		
Small Ring	9.10	in	4.48	V	
Large Ring	14.00	in	8.06	V	

Gamma Ray Calibration Report	
------------------------------	--

# Gamma Ray Calibration Report

Serial Number:	2001	
Tool Model:	OH	
Performed:	Tue Jan 08 10:28:42 2008	
Calibrator Value:	1.0	GAPI
Background Reading:	0.0	cps
Calibrator Reading:	1.0	cps
Sensitivity:	0.2500	GAPI/cps

Neutron Calibration Report		
Serial Number:	5145	
Tool Model:	G	
Performed:	Thu Jan 10 08:01:02 2008	
Calibrator Value:	1200	NAPI
Calibrator Reading:	1700	cps
Sensitivity:	1	NAPI/cps

Sensor	Offset (ft)	Schematic	Description	Len (ft)	OD (in)	Wt (lb)
NEU	37.19		None	0.75	1.50	5.00
			NEU-G (5145) Gearhart Epithermal	5.75	3.50	85.00
GR	31.62		GR-OH (2001) SIE	3.50	3.25	40.00
LSD	23.45		CDL-poilex (2118)	8.79	4.00	275.00
DCAL	23.04					
SSD	22.91					
CILD SP	10.60 10.60		DIL-G (5375) Gearhart	20.83	4.00	345.00
CILM	6.89					
RLL3	1.70					



Dataset:	xtoge3010.db: field/well/run1/pass1
Total Length:	39.62 ft
Total Weight:	750.00 lb
O.D.	4.00 in