

LITHOLOGY STRIP LOG

WellSight Systems

Scale 1:240 (5"=100') Imperial

Well Name: KGH Federal 25-2

Location: NW NE SEC 25, T1S, R104W 6TH PM, RIO BLANCO COUNTY, CO.

Licence Number: API# 050-103-10784-00

Region: GILSONITE RIDGE

Spud Date: 07/18/2006

Drilling Completed: 07/22/06

Surface Coordinates: NWNE , 340' FNL ,2214' FEL, SECTION 25 - 1S - R104W

Lat.:39.938517N X 109.015564W

Bottom Hole Coordinates: SAME

Ground Elevation (ft): 6703'

K.B. Elevation (ft): 6709'

Logged Interval (ft): 600' To: 5160' Total Depth (ft): 5160'

Formation: MESAVERDE, SEGO, BUCK TONGUE, CASTLEGATE, MANCOS A & B

Type of Drilling Fluid: FRESH WATER, GEL/CHEM MUD

Printed by WellSight Log Viewer from WellSight Systems 1-800-447-1534 www.WellSight.com

OPERATOR

Company: KGH OPERATING COMPANY

Address: PO BOX 2235

BILLINGS, MT 59103

GEOLOGIST

Name: MARK DULETSKY P.G.

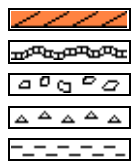
Company: WILDCAT EXPLORATION WELLOGGING CO.

Address: P.O. BOX 186

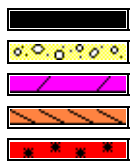
THERMOPOLIS, WYOMING

82443

ROCK TYPES



Anhy
Bent
Brec
Cht
Cylst



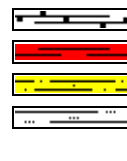
Coal
Congl
Dol
Gyp
Igne



Lmst
Meta
Mrlst
Salt
Shale



Shcol
Shgy
Sltst
Ss
Till



carb sh
red sh
shlyss
Sltly sh

ACCESSORIES

FOSSIL

Algae
Amph
Belm
Bioclst
Brach
Bryozoa
Cephal
Coral
Crin
Echin
Fish
Foram
Fossil
Gastro
Oolite



Ostra
Pelec
Pellet
Pisolite
Plant
Strom

MINERAL

Anhy
Arggrn
Arg
Bent
Bit
Brecfrag
Calc
Carb



Chtdk
Chtlt
Dol
Feldspar
Ferrpel
Ferr
Glau
Gyp
Hvymin
Kaol
Marl
Minxl
Nodule
Phos
Pyr
Salt



Sandy
Silt
Sil
Sulphur
Tuff

STRINGER

Anhy
Arg
Bent
Coal
Dol
Gyp
Ls
Mrst
Sltstrg



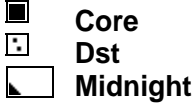
Ssstrg

TEXTURE

Boundst
Chalky
Cryxln
Earthy
Finexln
Grainst
Lithogr
Microxln
Mudst
Packst
Wackest

OTHER SYMBOLS

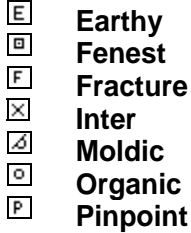
INTERVALS



EVENTS



POROSITY TYPE

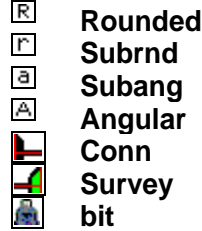


Vuggy

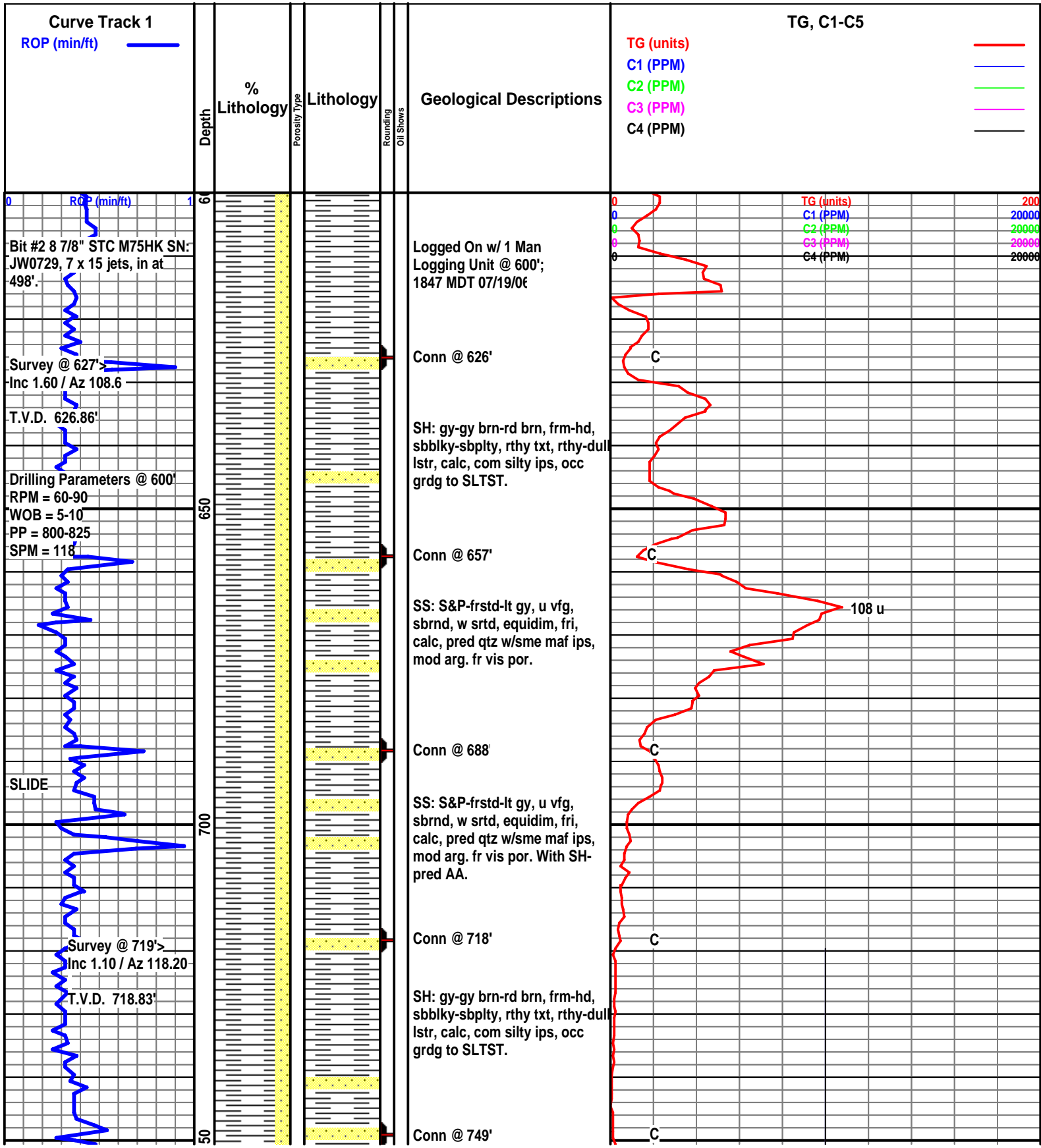
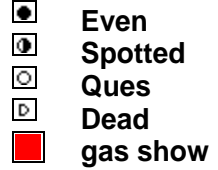
SORTING

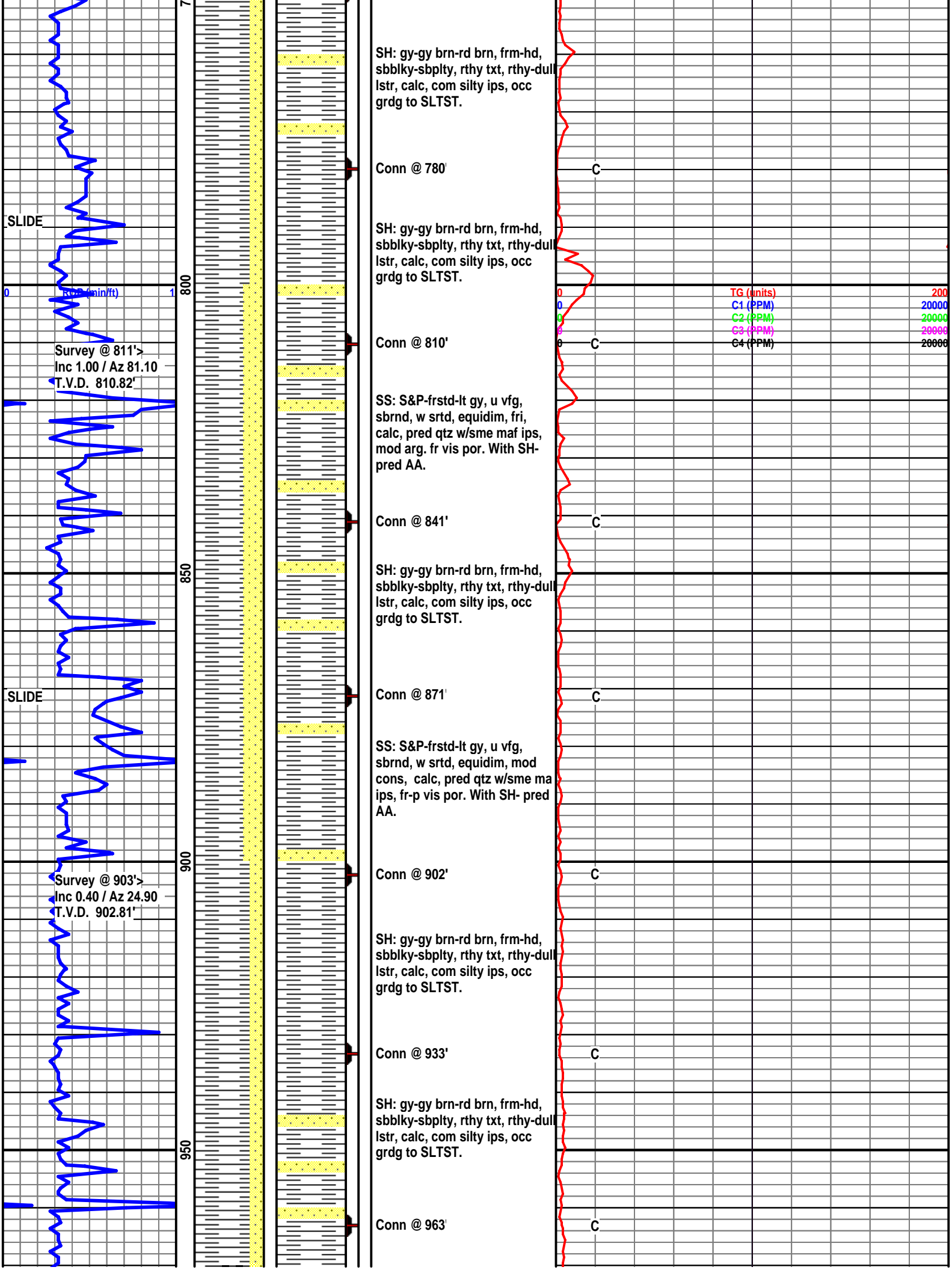


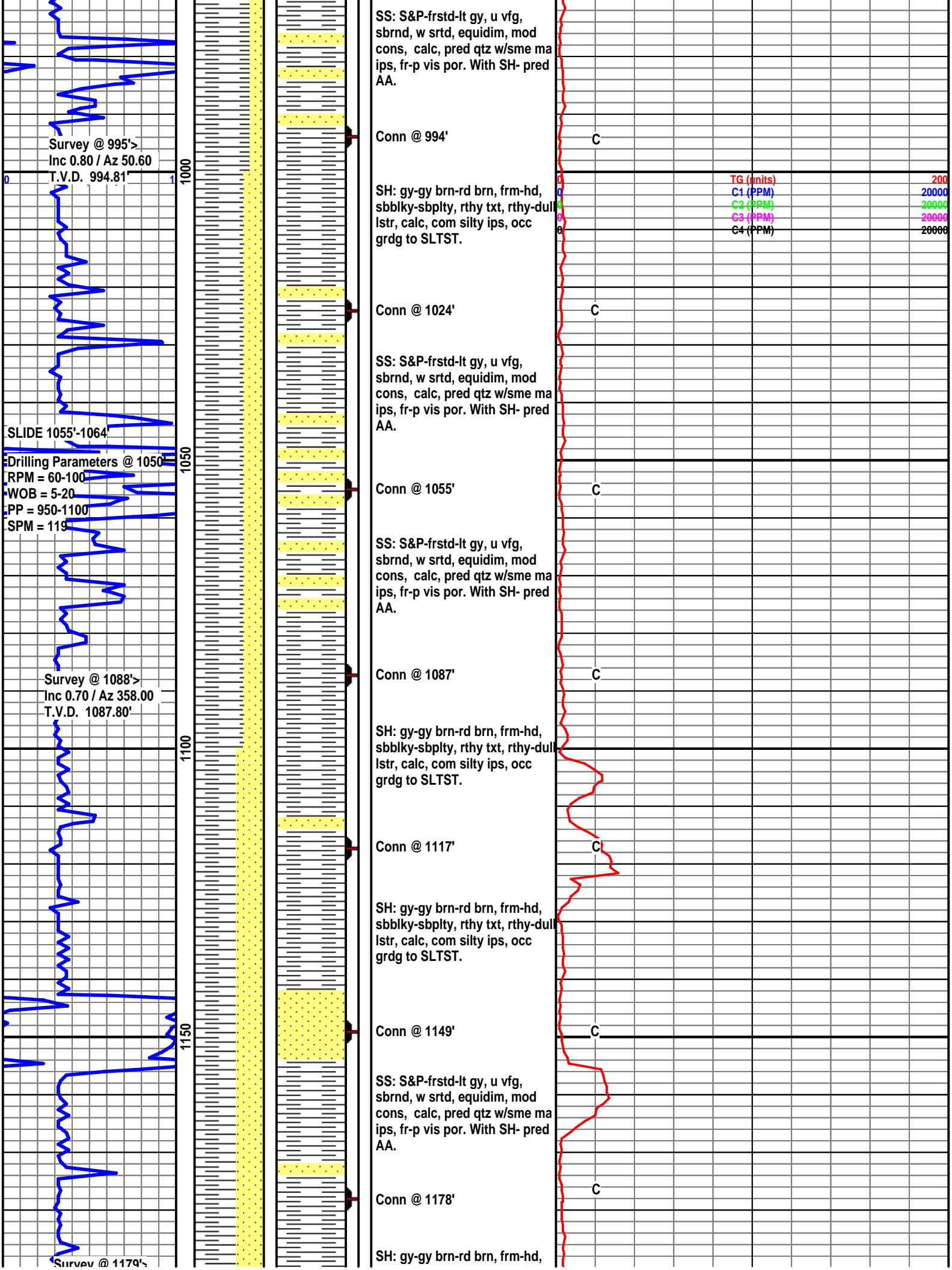
ROUNDING

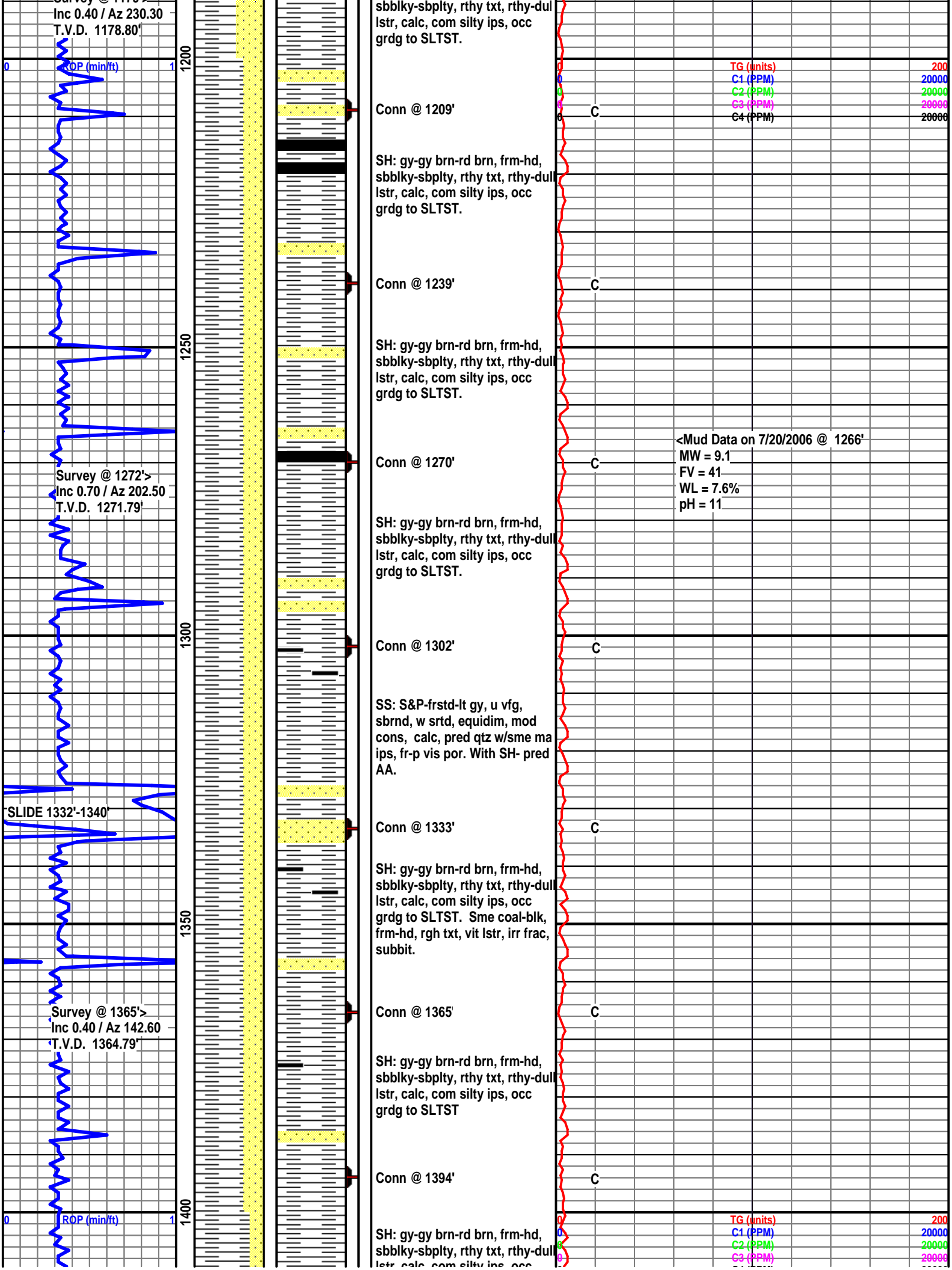


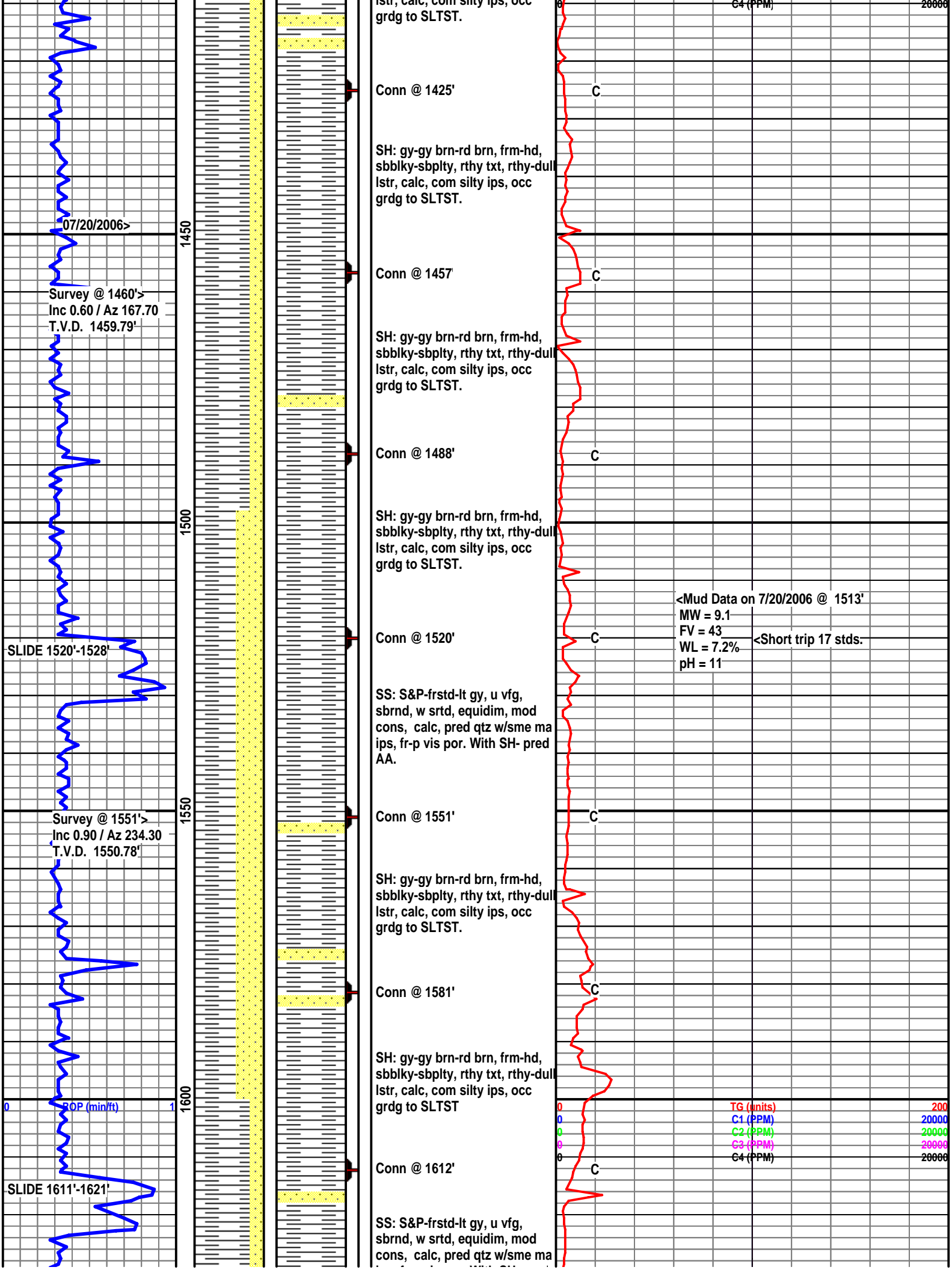
OIL SHOWS

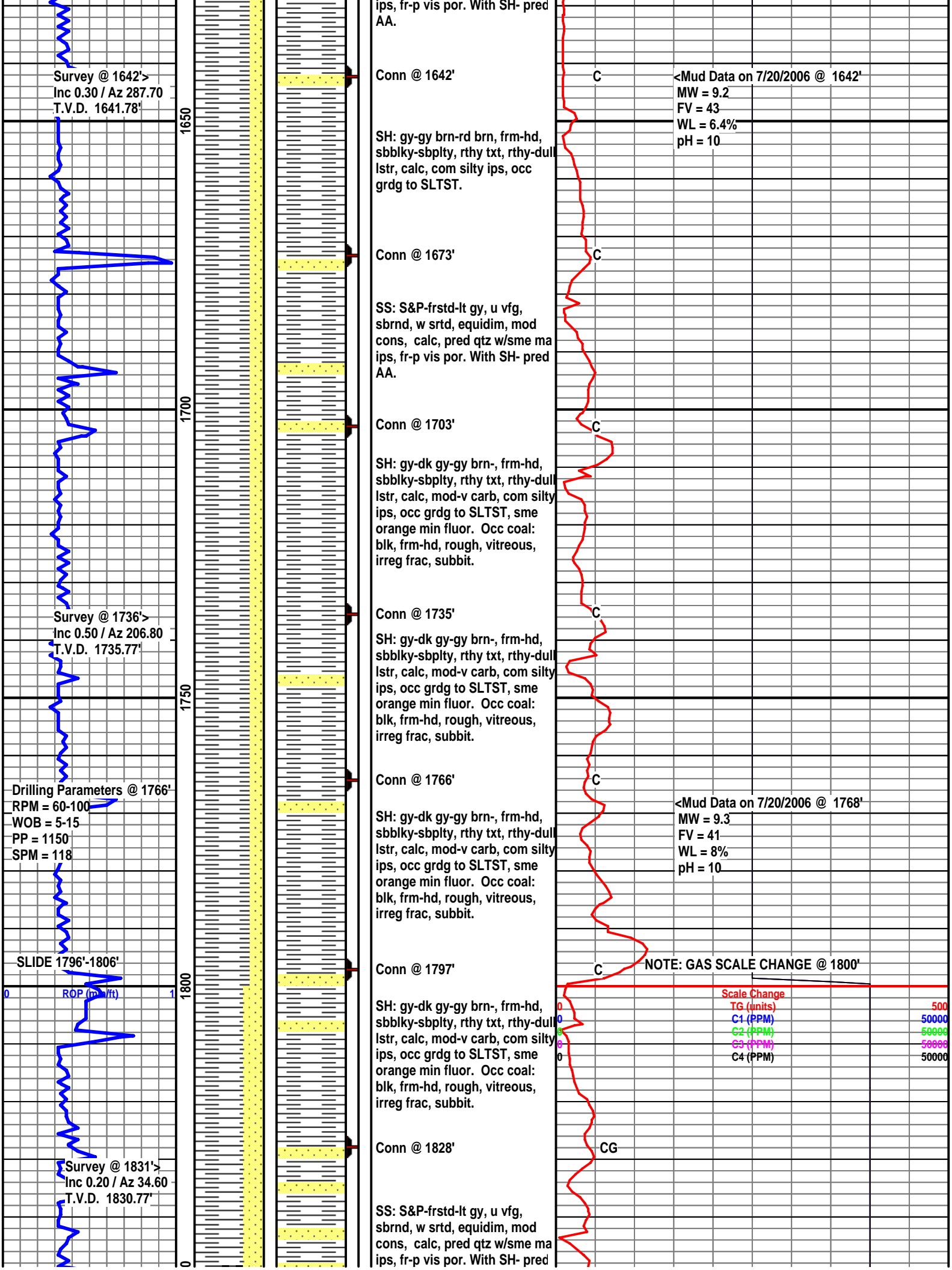


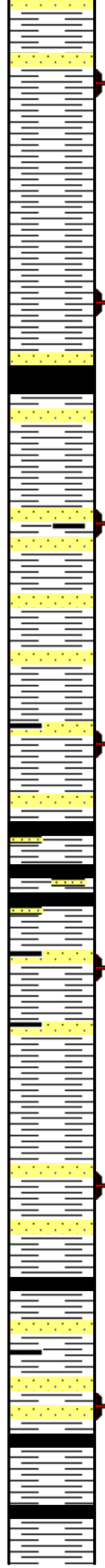
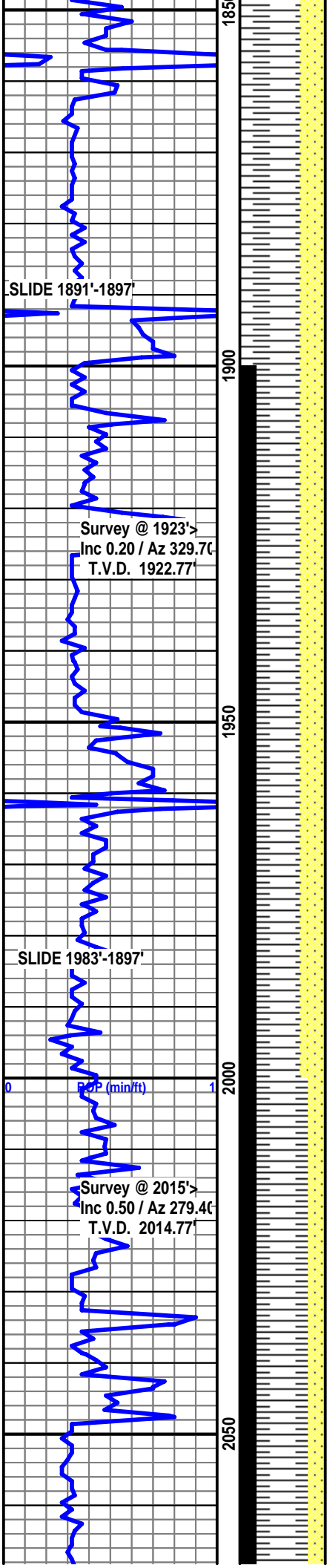












AA.

Conn @ 1860'

SH: gy-dk gy-gy brn-, frm-hd, sbblky-sbplty, rthy txt, rthy-dull lstr, calc, mod-v carb, com silty ips, occ grdg to SLTST, sme orange min fluor in SS. Occ coal: blk, frm-hd, rough, vitreous, irreg frac, subbit.

Conn @ 1891'

SH: gy-dk gy-gy brn-, frm-hd, sbblky-sbplty, rthy txt, rthy-dull lstr, calc, mod-v carb, com silty ips, occ grdg to SLTST, sme orange min fluor in SS. Com coal: blk, frm-hd, rough, vitreous, irreg frac, subbit.

Conn @ 1922'

SH: gy-dk gy-gy brn-, frm-hd, sbblky-sbplty, rthy txt, rthy-dull lstr, calc, mod-v carb, com silty ips, occ grdg to SLTST, sme orange min fluor in SS. SME coal: blk, frm-hd, rough, vitreous, irreg frac, subbit.

Conn @ 1953'

SH: gy-dk gy-gy brn-, frm-hd, sbblky-sbplty, rthy txt, rthy-dull lstr, calc, mod-v carb, com silty ips, occ grdg to SLTST, sme orange min fluor in SS inbds. Ab coal: blk, frm-hd, rough, vitreous, irreg frac, subbit.

Conn @ 1984'

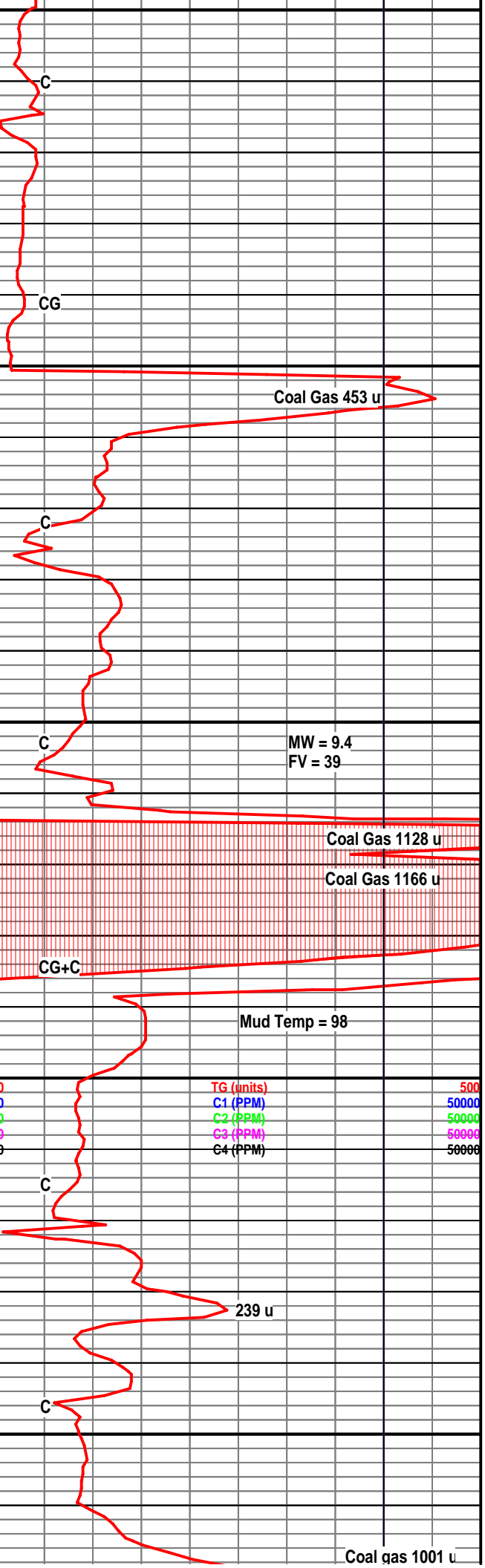
SH: gy-dk gy-gy brn-, frm-hd, sbblky-sbplty, rthy txt, rthy-dull lstr, calc, mod-v carb, com silty ips, occ grdg to SLTST, sme orange min fluor in SS inbds. Sme coal: blk, frm-hd, rough, vitreous, irreg frac, subbit.

Conn @ 2015'

SS: S&P-frstd-lt gy, u vf-f gr, sbrnd, w srtd, equidim, mod-w cons, calc, pred qtz w/sme ma ips, fr-p vis por, ab flo grn-yel min fluor, no cut. With SH- pre AA.

Conn @ 2046'

SH: gy-dk gy-gy brn-, frm-hd, sbblky-sbplty, rthy txt, rthy-dull lstr, calc, mod-v carb, com silty ips, occ grdg to SLTST, sme orange min fluor. Com SS inbds-pred AA.



SLIDE 2075'-2080'

2100

Survey @ 2109'>
Inc 0.60 / Az 306.3C
T.V.D. 2108.77'

2150

SLIDE 2169'- 2173'

2200

Survey @ 2204'>
Inc 0.50 / Az 303.1C
T.V.D. 2203.76'

2250

SLIDE 2264'- 2269'

Conn @ 2076'

SS: S&P-frstd-lt gy, u vf-f gr, sbrnd, w srted, equidim, mod-w cons, calc, pred qtz w/sme ma ips, fr-p vis por, ab flo grn-yel min fluor, no cut. With SH- pred AA.

Conn @ 2107'

SH: gy-dk gy-gy brn-, frm-hd, sbblky-sbplty, rthy txt, rthy-dull lstr, calc, mod-v carb, com silty ips, occ grdg to SLTST, sme orange min fluor. Com coal-blk, frm, rough,vit,irreg frac. Com SS inbds-pred AA.

Conn @ 2139'

SS: S&P-frstd-lt gy, u vf-f gr, sbrnd, w srted, equidim, mod-w cons, calc, pred qtz w/sme ma ips, fr-p vis por, ab flo grn-yel min fluor, no cut. With SH- pred AA.

Conn @ 2170'

SH: gy-dk gy-gy brn-, frm-hd, sbblky-sbplty, rthy txt, rthy-dull lstr, calc, mod-v carb, com silty ips, occ grdg to SLTST, sme orange min fluor. Com SS inbds-pred AA.

Conn @ 2201'

SS: S&P-frstd-lt gy, u vf-f gr, sbrnd, w srted, equidim, mod-w cons, calc, pred qtz w/sme ma ips, fr-p vis por, sme dull orange min fluor, no cut. With SH- pred AA.

Conn @ 2233'

SH: gy-dk gy-gy brn-, frm-hd, sbblky-sbplty, rthy txt, rthy-dull lstr, calc, mod-v carb, com silty ips, occ grdg to SLTST, sme orange min fluor. Com SS inbds-pred AA.

Conn @ 2265'

SH: gy-dk gy-gy brn-, frm-hd, sbblky-sbplty, rthy txt, rthy-dull lstr, calc, mod-v carb, com silty ips, occ grdg to SLTST, sme orange min fluor. Com SS inbds-pred AA

C

305 u

218 u

154 u

Coal gas 442 u

CG=254 u

C

266 u

<Mud Data on 7/20/2006 @ 2183'

MW = 9.5

FV = 39'

WL = 8%

pH = 10

NOTE: Gas Scale Change @ 2200'

C

Scale Change

TG (units)

C1 (PPM)

C2 (PPM)

C3 (PPM)

C4 (PPM)

1000

100000

1000000

10000000

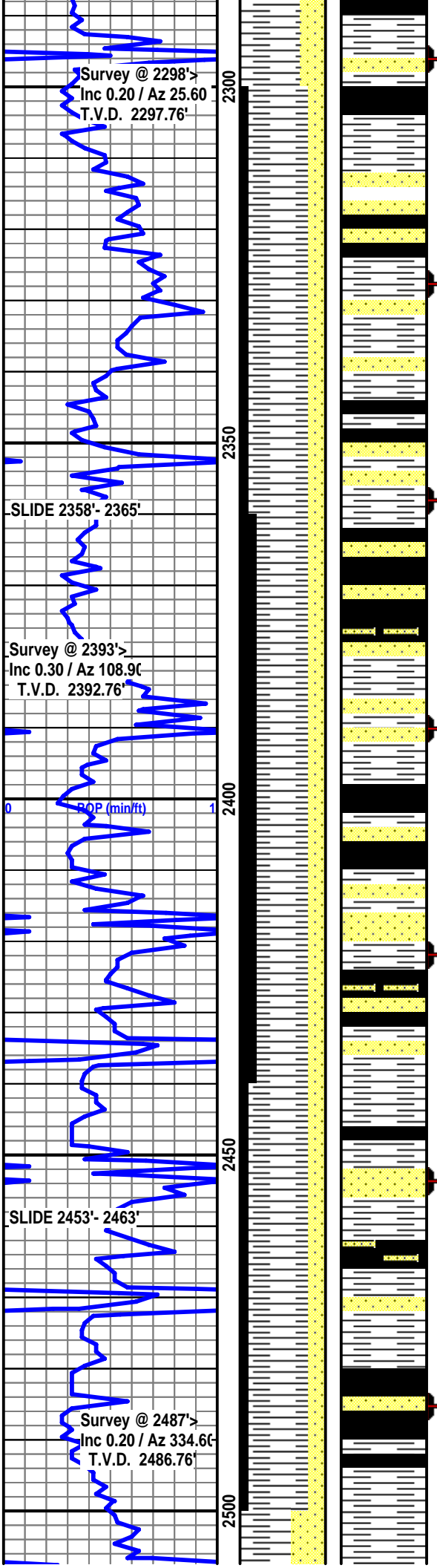
100000000

1000000000

C

C

1018 u



Conn @ 2296'

SH: gy-dk gy-gy brn-, frm-hd, sbblky-sbplty, rthy txt, rthy-dull lstr, calc, mod-v carb, com silty ips, occ grdg to SLTST, sme orange min fluor. Com SS inbds-S&P-lt gy, vf-fg, sbrrnd, calc.

Conn @ 2328'

SH: gy-dk gy-gy brn-, frm-hd, sbblky-sbplty, rthy txt, rthy-dull lstr, calc, mod-v carb, com silty ips, occ grdg to SLTST, sme orange min fluor. Com SS inbds-pred AA.

Conn @ 2358'

SH: gy-dk gy-gy brn-, frm-hd, sbblky-sbplty, rthy txt, rthy-dull lstr, calc, mod-v carb, com silty ips, occ grdg to SLTST, sme orange min fluor. Ab coal-blk, frm, rough, vit, irreg frac, subbit.Com SS inbds-pred AA.

Conn @ 2390'

SH: gy-dk gy-gy brn-, frm-hd, sbblky-sbplty, rthy txt, rthy-dull lstr, calc, mod-v carb, com silty ips, occ grdg to SLTST, sme orange min fluor. Ab coal-blk, frm, rough, vit, irreg frac, subbit.Com SS inbds-pred AA.

Conn @ 2422'

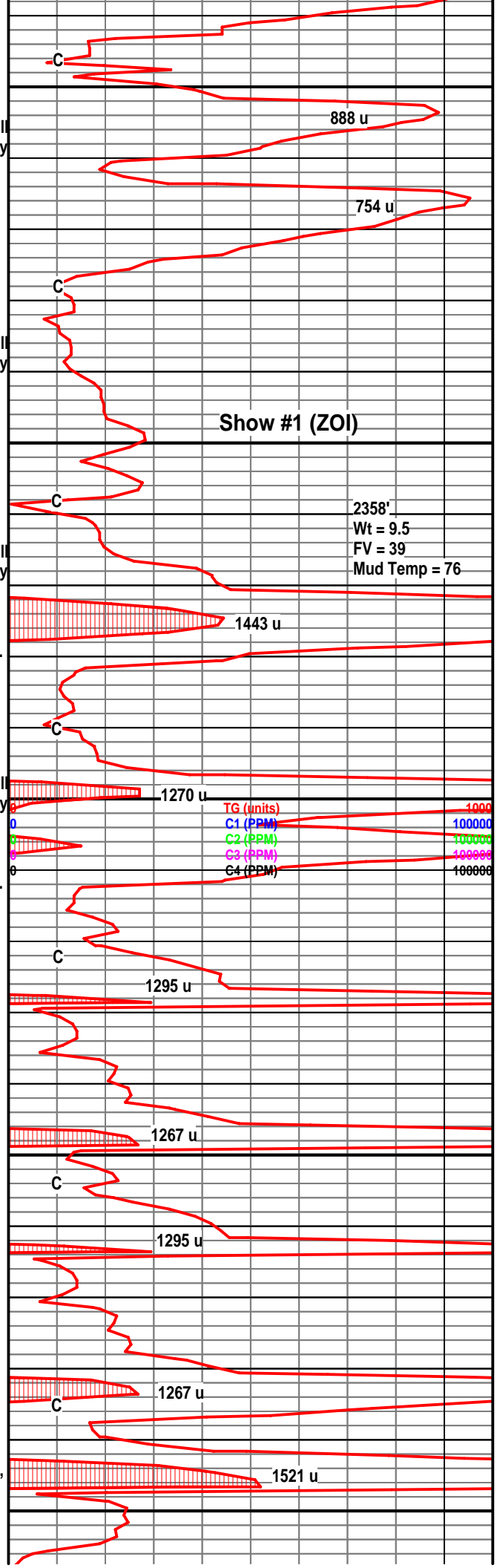
SH: dk brn-dk rdsh brn-dk gy, frm-hd, sbplty-sbblky, rthy txt, rthy lstr, v carb, n calc. Ab coals-blk, frm, rough, vit, subbit.

Conn @ 2454'

SH: dk brn-dk rdsh brn-dk gy, frm-hd, sbplty-sbblky, rthy txt, rthy lstr, v carb, n calc. Ab coal-AA.

Conn @ 2485'

Coal: black, frm-hd, rough txt, vitreous lstr, irregular fracture, sub-bituminous.



C

888 u

754 u

C

Show #1 (ZOI)

C

2358'

Wt = 9.5

FV = 39

Mud Temp = 76

1443 u

C

1270 u

TG (units)

C1 (PPM)

C2 (PPM)

C3 (PPM)

C4 (PPM)

1000

100000

100000

100000

100000

C

1295 u

1267 u

C

1295 u

1267 u

C

1521 u

