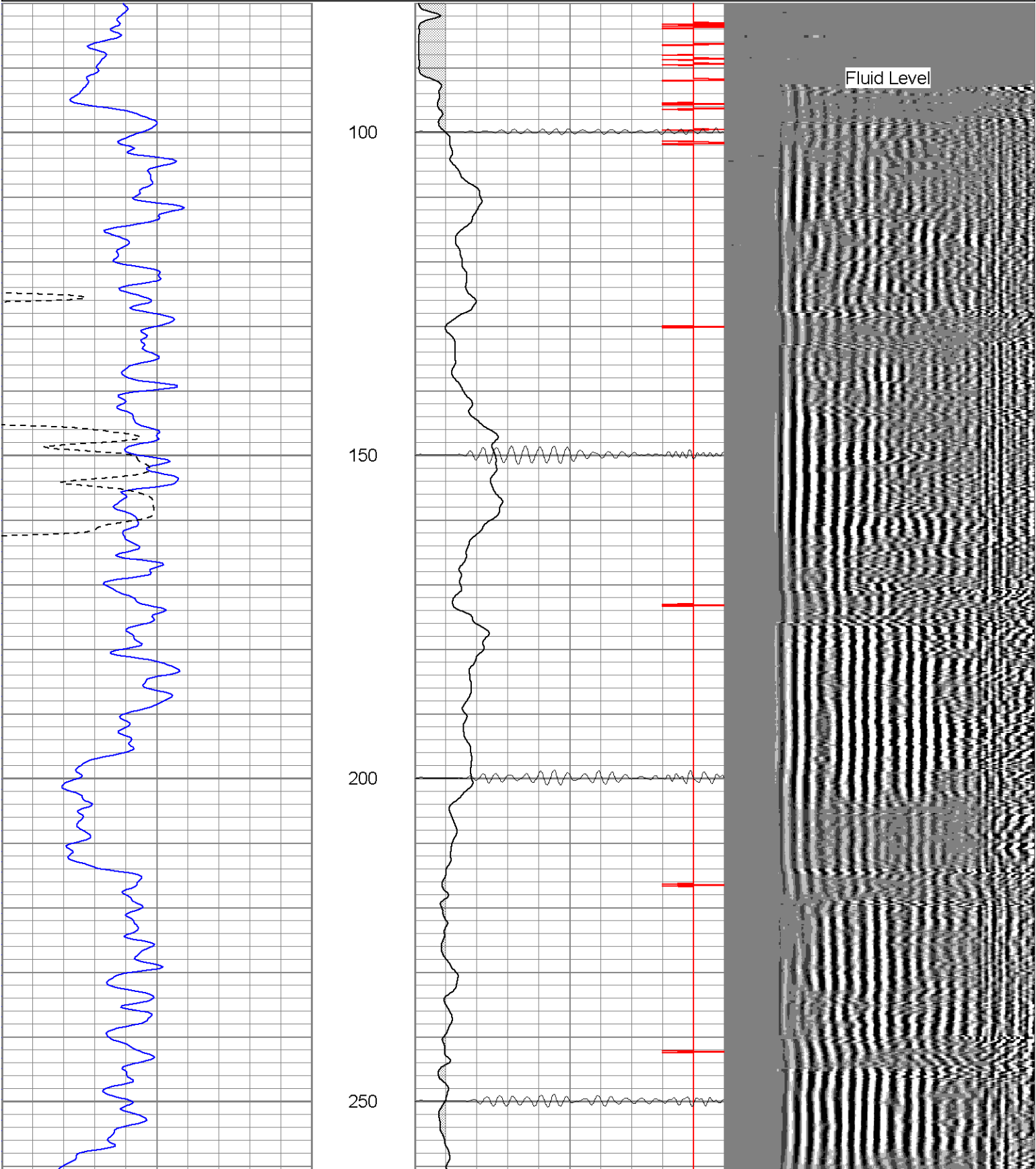
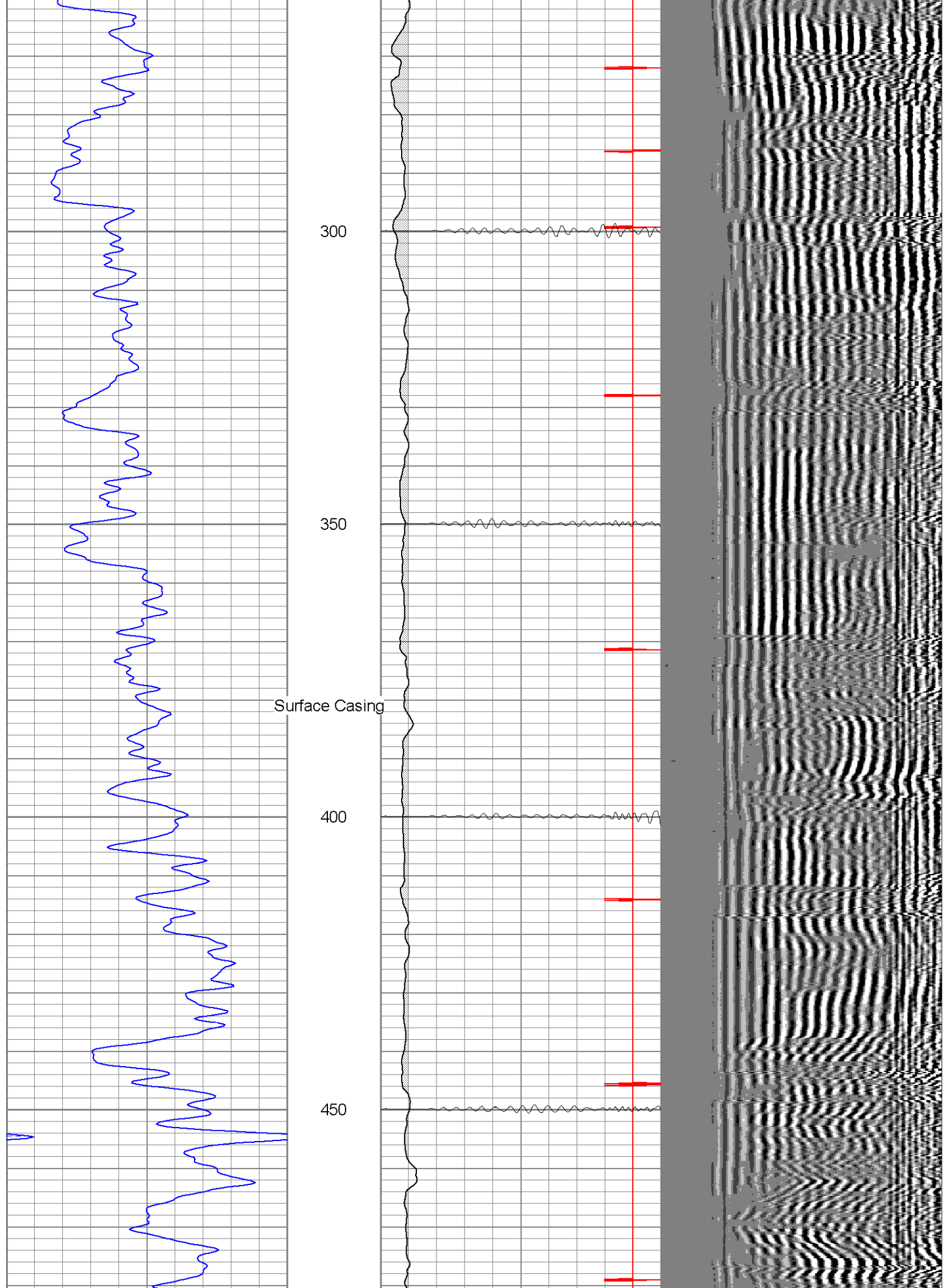
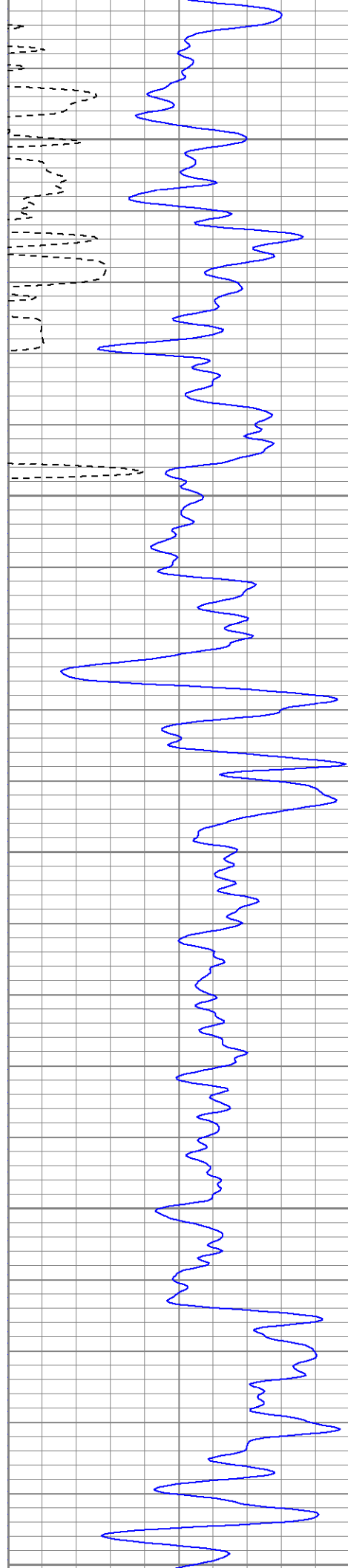


0	GR (GAPI)	200	0	AMP3 (mV)	100	200	Variable Density	1200
200	GR (GAPI)	400	18	CCL	-2			
400	TT3 (usec)	200	200	CBL5	1200			







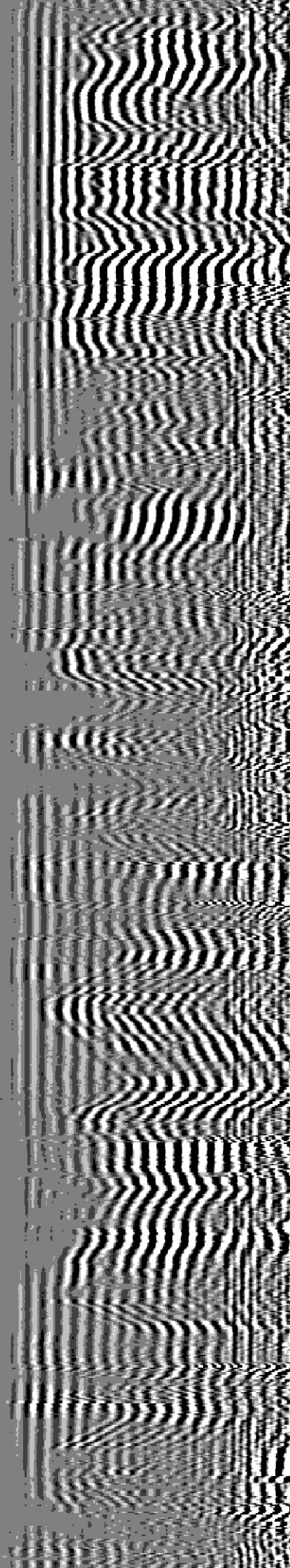
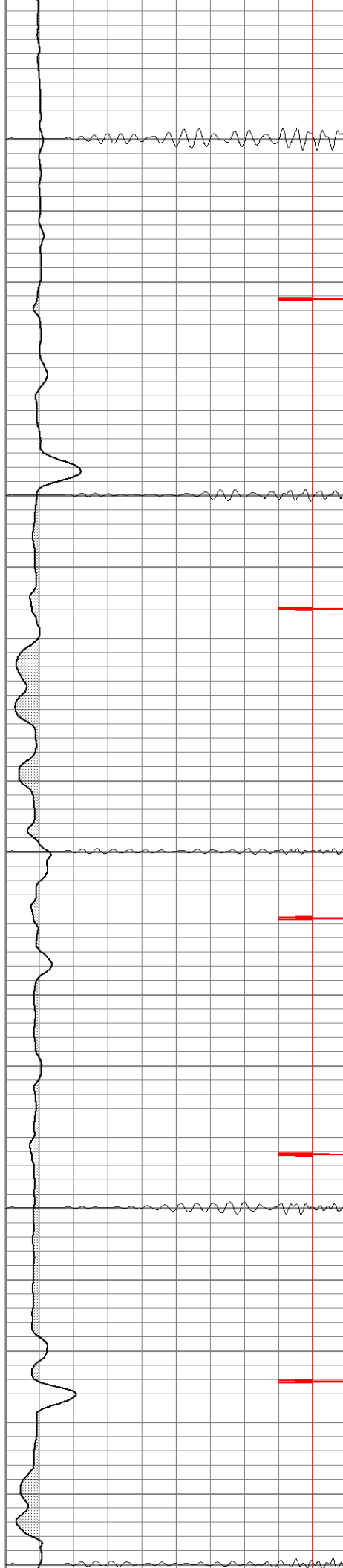
500

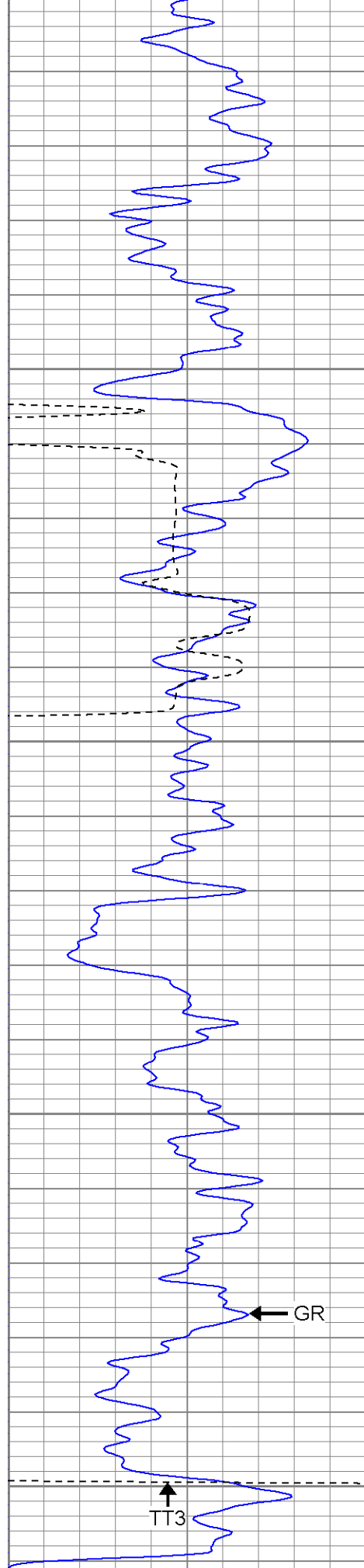
550

600

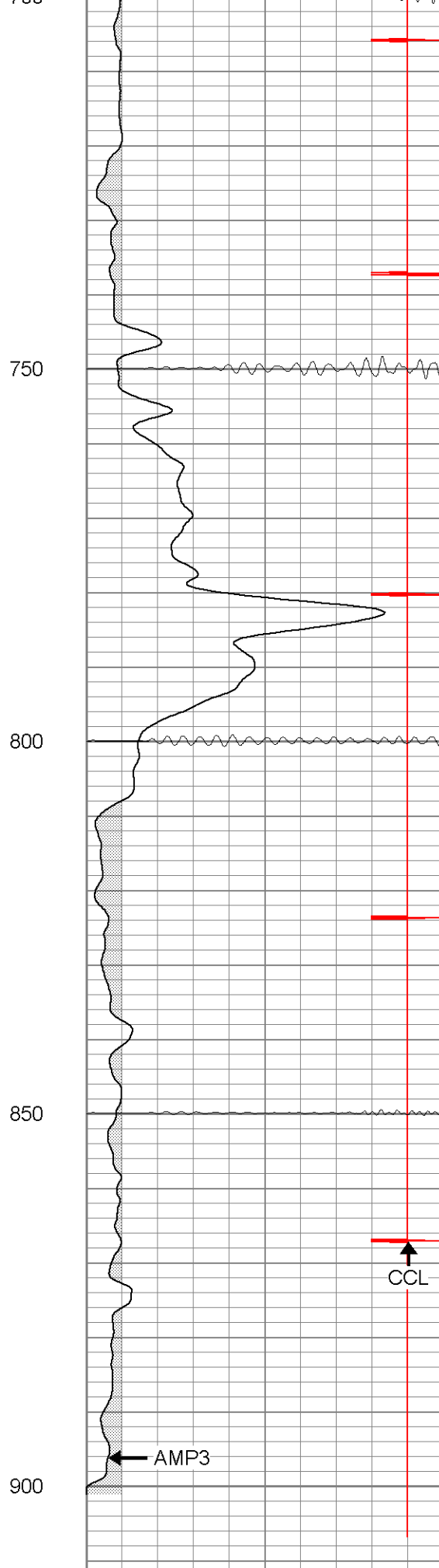
650

700

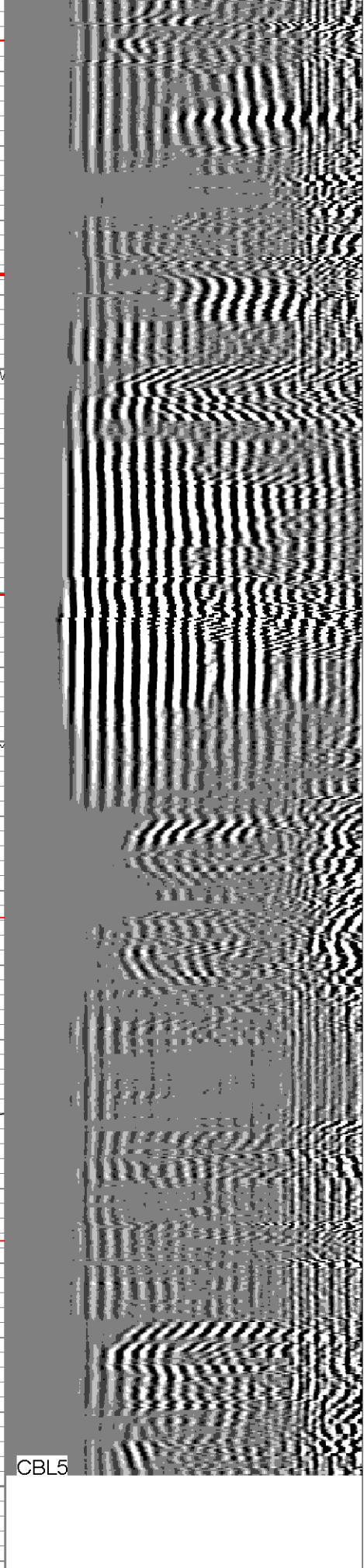




0	GR (GAPI)	200
200	GR (GAPI)	400



0	AMP3 (mV)	100
18	CCL	-2



200	Variable Density	1200
-----	------------------	------

400 TT3 (usec) 200

200 CBL5 1200



SUPERIOR

Black Lick, Pa.
Mercer, Pa.
Wooster, Oh.
Cleveland, Ok.
Trinidad, Co.

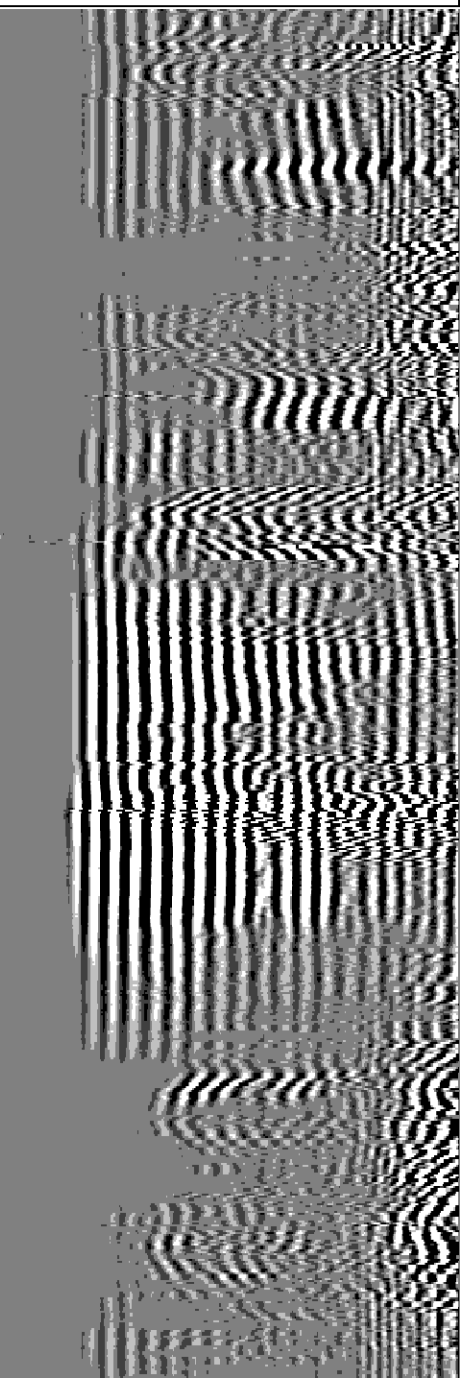
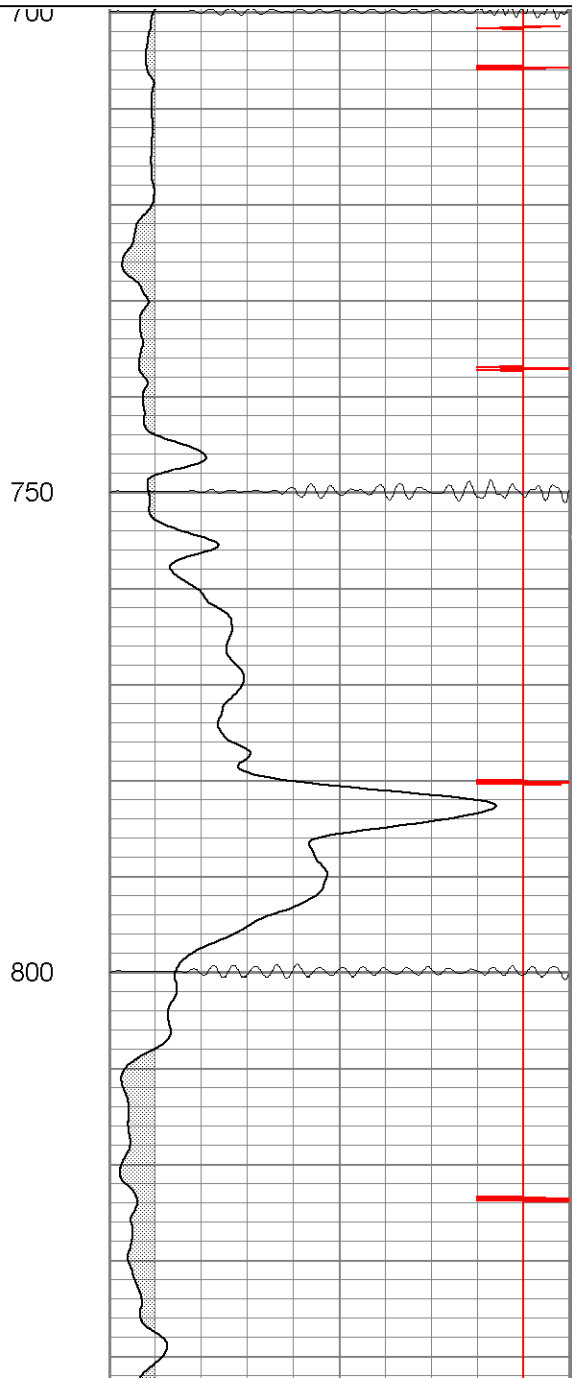
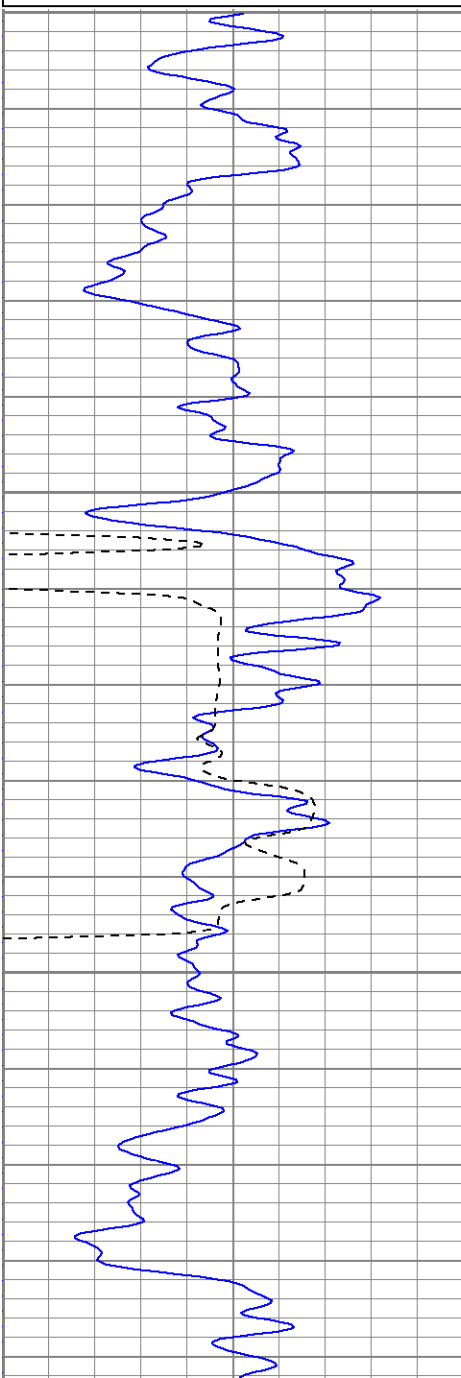
Repeat Section

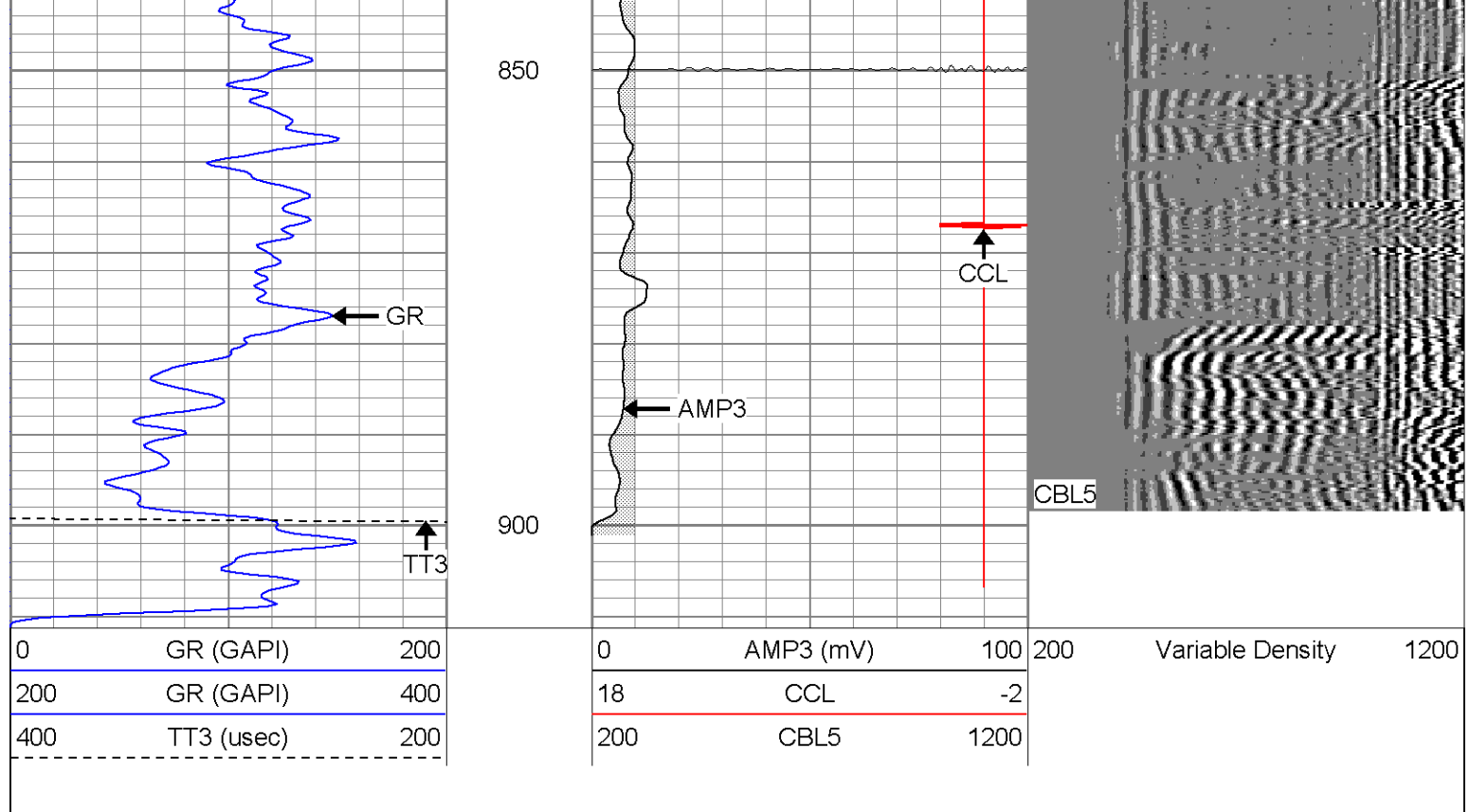
Database File: hr07054907b.db
Dataset Pathname: pass1.1
Presentation Format: cblrt
Dataset Creation: Mon Apr 09 10:07:18 2007 by Calc Open-Cased 060407
Charted by: Depth in Feet scaled 1:240

0	GR (GAPI)	200
200	GR (GAPI)	400
400	TT3 (usec)	200

0	AMP3 (mV)	100
18	CCL	-2
200	CBL5	1200

200 Variable Density 1200





Calibration Report

Database File: hr07054907b.db
 Dataset Pathname: pass1.1
 Dataset Creation: Mon Apr 09 10:07:18 2007 by Calc Open-Cased 060407

Gamma Ray Calibration Report

Serial Number: Titan2.75
 Tool Model: 2.75
 Performed: Wed Mar 07 08:33:06 2007

Calibrator Value: 200.0 GAPI

Background Reading: 40.0 cps
 Calibrator Reading: 240.0 cps


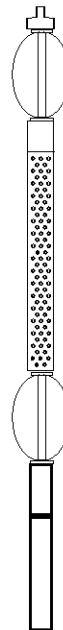







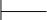
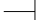




Sensitivity: 1.1000 GAPI/cps

Cement Bond Log Calibration Report

Serial Number: Titan4
 Tool Model: 4
 Performed: Thu Mar 08 08:32:41 2007

Depth: 0 ft
 Casing Diameter: 0 in

	3' Spacing	5' Spacing	
Signal Zero:	0	1	mV
Calibrated Amplitude:	85	85	mV
Reading at Signal Zero:	0.00161133	0.0143555	V
Reading in Free Pipe:	1.6	1.65081	V
Gain:	53.1786	51.3306	
Offset:	-0.0856882	0.263125	

Sensor	Offset (ft)		Schematic		Description	Len (ft)	OD (in)	Wt (lb)
CHD	20.38				CHD-None (0)	0.75	1.50	5.00
CENT	19.63				CENT-X (2)	3.00	1.69	25.00
WVF5	12.82				CBL-4 (Titan4)	8.15	2.25	110.00
WVF3	11.82							
CENT	8.48				CENT-X (1)	3.00	1.69	25.00
CCL	4.27				CCL-2.75 (Titan2.75)	1.71	2.75	15.00
GR	1.42				GR-2.75 (Titan2.75) Two Point	3.77	2.75	25.00
				Dataset:	hr07054907b.db: field/well/run1/pass1.1			
			Total Length:	20.38 ft				
			Total Weight:	205.00 lb				
			O.D.	2.75 in				