



SUPERIOR
WELL SERVICES
Black Lick, Pa.
Mercer, Pa.
Wooster, Oh.
Cleveland, Ok.
Trinidad, Co.

CEMENT BOND LOG

Company XTO Energy, INC.
Well Apache Canyon 35-14-2
Field Purgatoire River
County Las Animas State Colorado

Location: API # : 05-071-09233-00

1077' FSL & 2121' FWL

SEC 35 TWP 33S RGE 67W

Permanent Datum Ground Level Elevation 7008'
Log Measured From Ground Level
Drilling Measured From Ground Level

Other Services
Pressure Control
Elevation
K.B. -----
D.F. -----
G.L. 7008'

Date 5-17-07

Run Number	One
Depth Driller	1750'
Depth Logger	1672'
Bottom Logged Interval	1668'
Top Log Interval	Surface
Open Hole Size	7 7/8"
Type Fluid	Water
Density / Viscosity	////
Max. Recorded Temp.	////
Estimated Cement Top	Surface
Time Well Ready	10:00 AM
Time Logger on Bottom	10:45 AM
Equipment Number	T0700
Location	Trinidad, Co
Recorded By	Karl Lucero
Witnessed By	Mr. Mike Polley

Borehole Record			Tubing Record		
Run Number	Bit	From	To	Size	Weight
					From
					To

Casing Record	Size	Wgt/Ft	Top	Bottom
Surface String	8 5/8		0	494'
Prot. String				
Production String				
Liner				

<<< Fold Here >>>

All interpretations are opinions based on inferences from electrical or other measurements and we cannot and do not guarantee the accuracy or correctness of any interpretation, and we shall not, except in the case of gross or willful negligence on our part, be liable or responsible for any loss, costs, damages, or expenses incurred or sustained by anyone resulting from any interpretation made by any of our officers, agents or employees. These interpretations are also subject to our general terms and conditions set out in our current Price Schedule.

Comments

Well Directions:
First Bosque Entrance just before Weston,
First right just after compressor (thru contractor yard)



SUPERIOR
Black Lick, Pa.
Mercer, Pa.
Wooster, Oh.
Cleveland, Ok.
Trinidad, Co.

Main Pass 1000 PSI

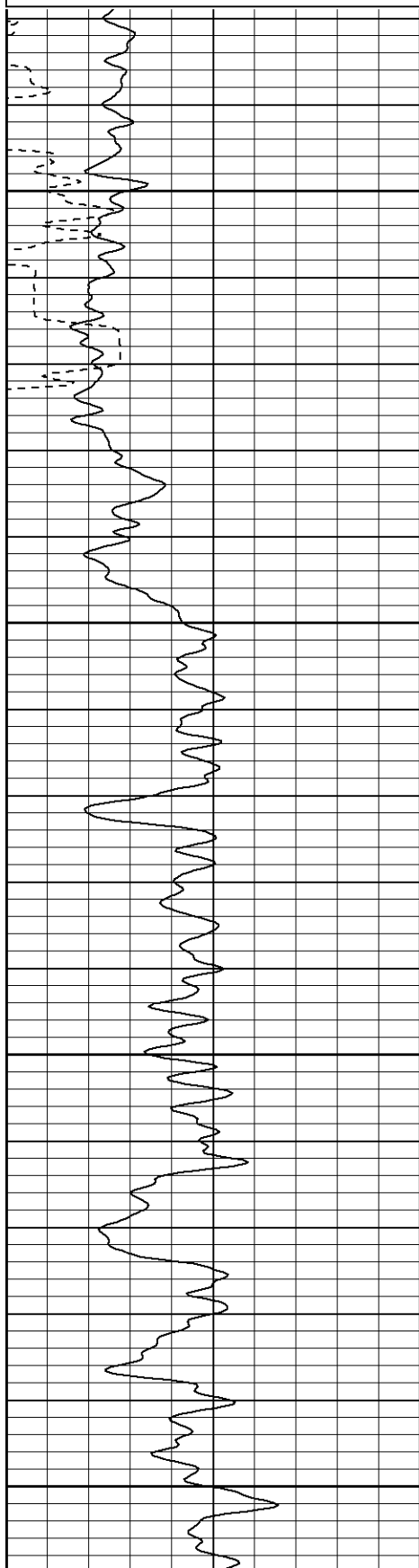
Database File: apachecanyon35-14-2051707.db
Dataset Pathname: pass2
Presentation Format: cblrt
Dataset Creation: Thu May 17 11:17:13 2007 by Log Open-Cased 060407
Charted by: Depth in Feet scaled 1:240

0	GR (GAPI)	200
400	TT3 (usec)	200

200	GR (GAPI)	400

0	Amplitude (mV)	100
18	CCL	-2
200	CBL5	1200

200 VDL 1200

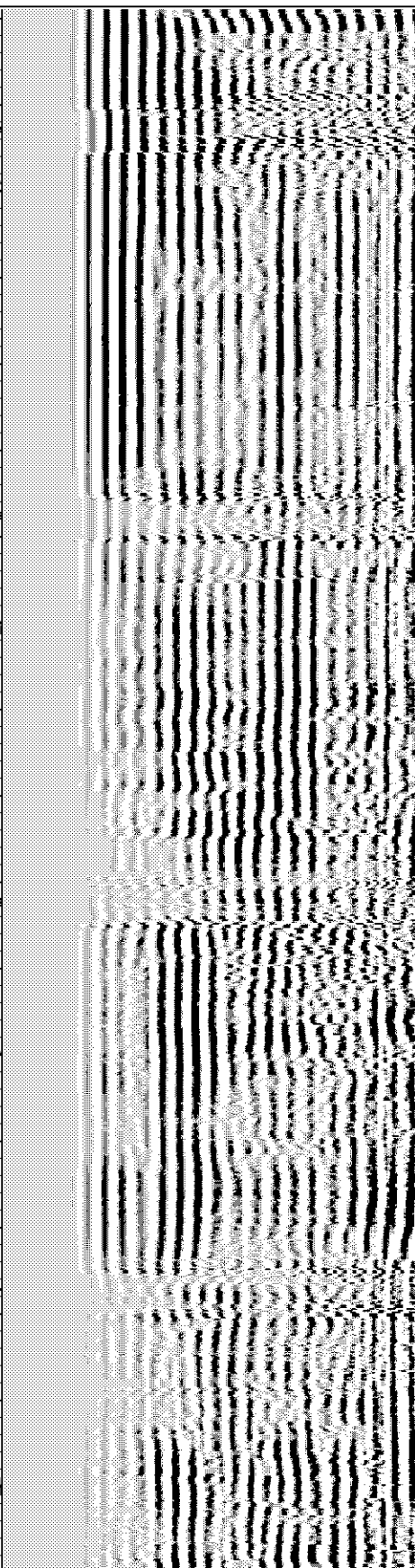
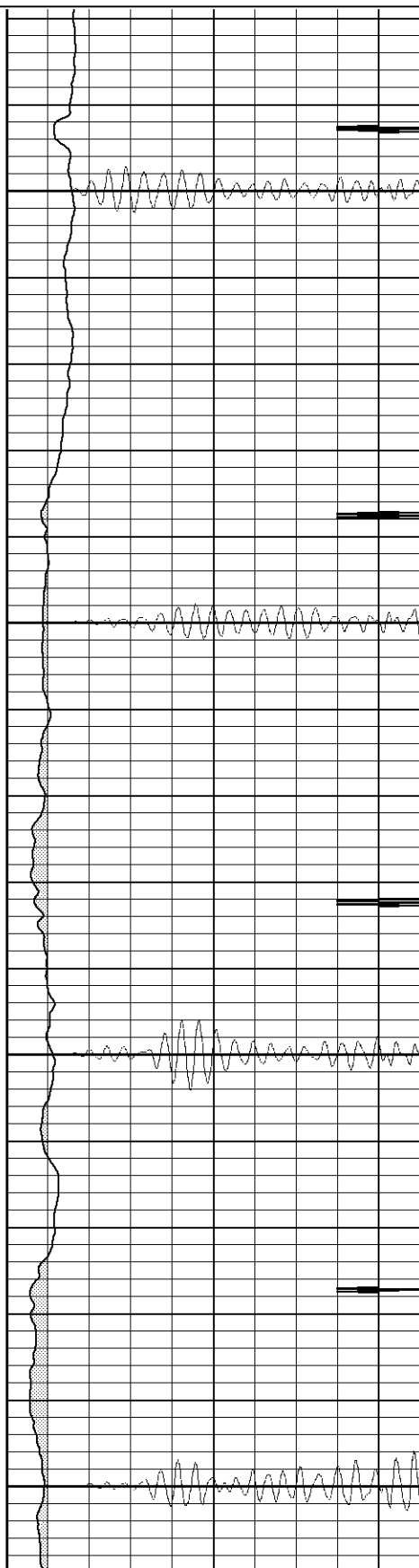


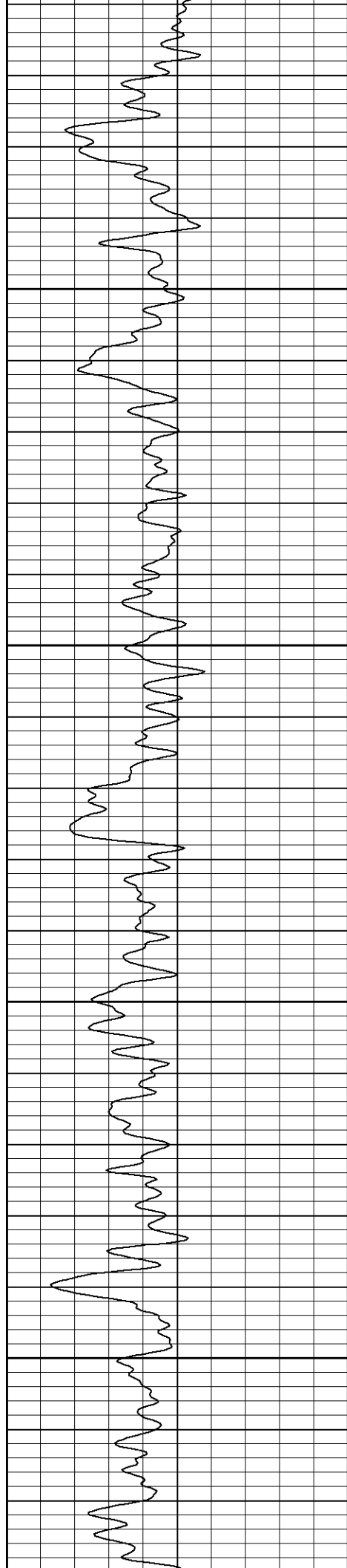
50

100

150

200



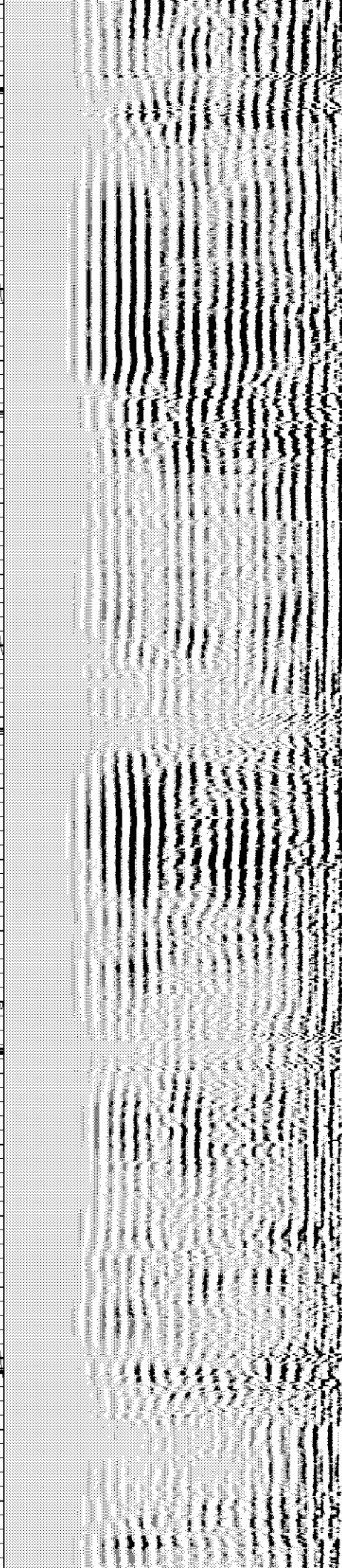
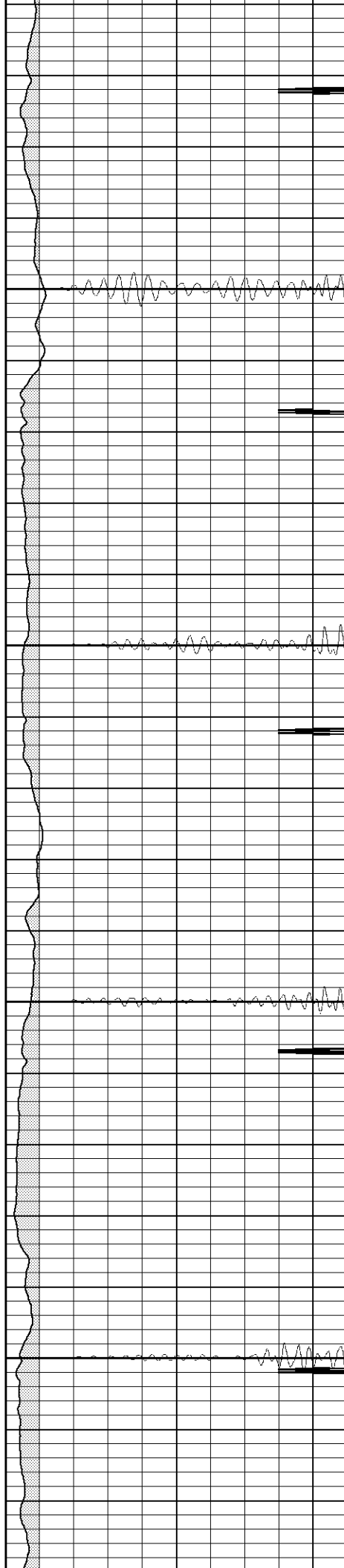


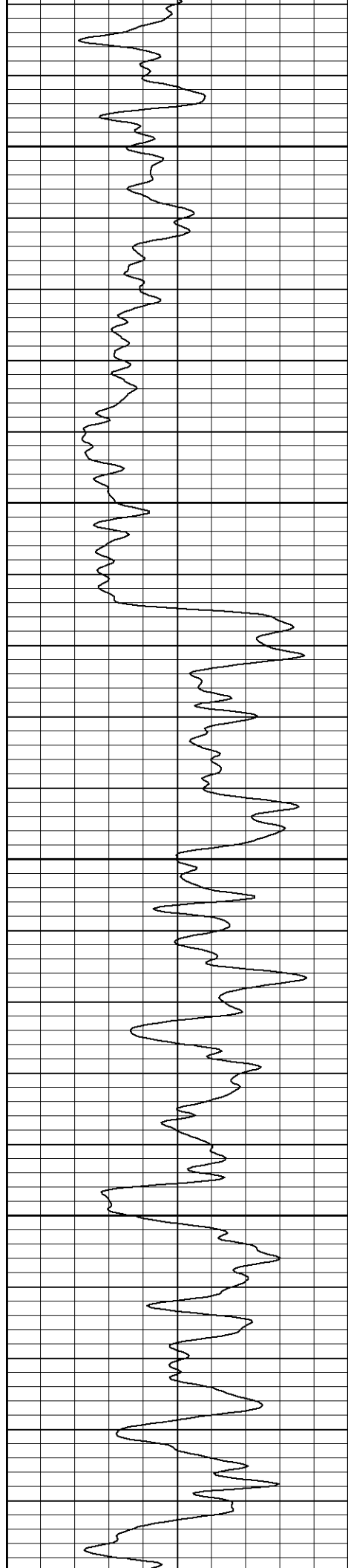
250

300

350

400





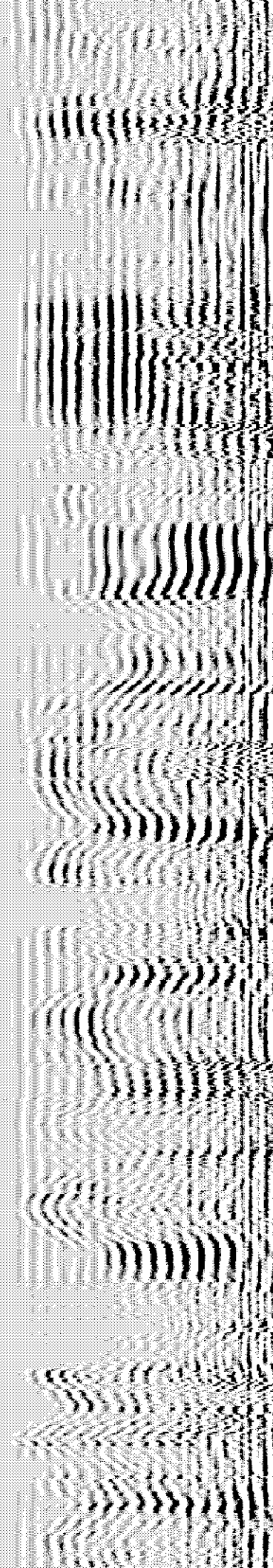
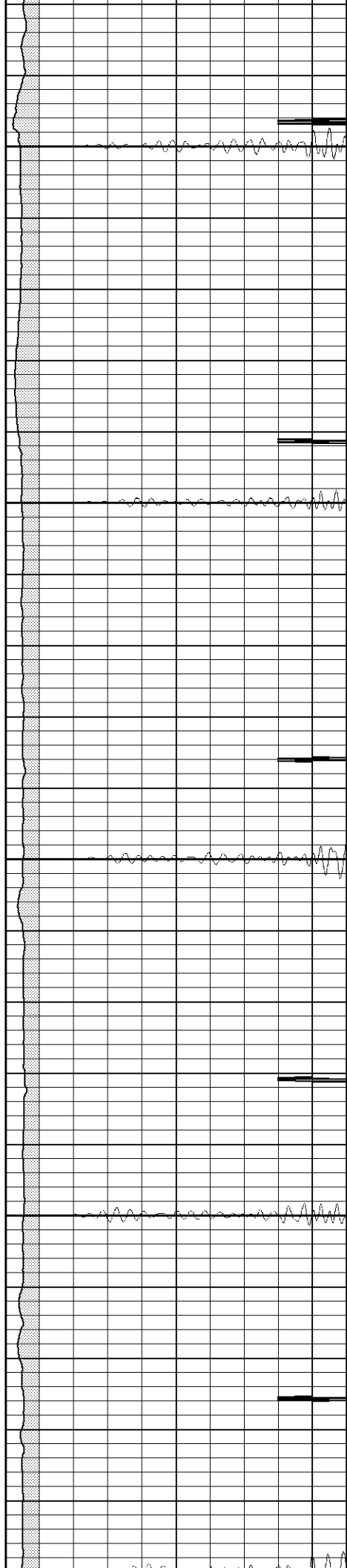
450

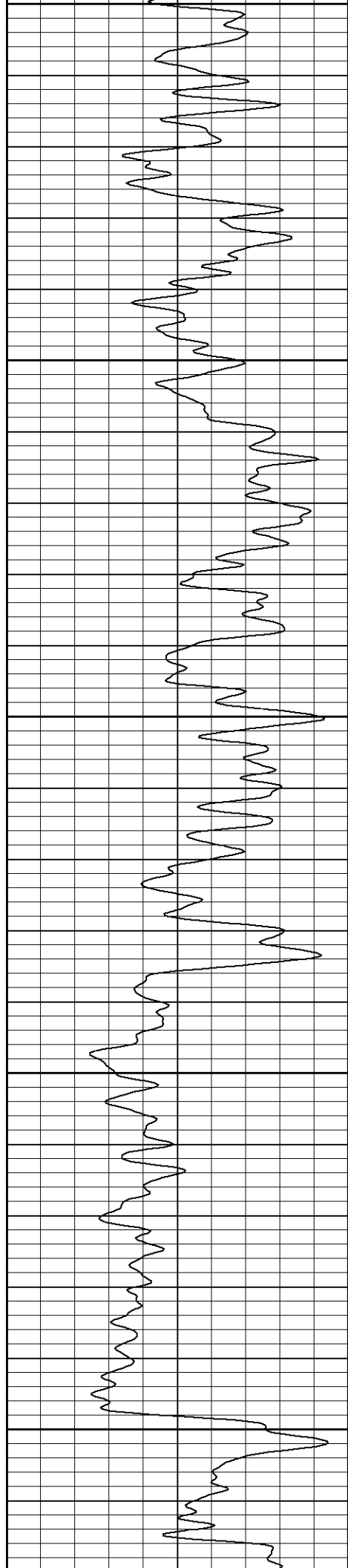
500

550

600

650





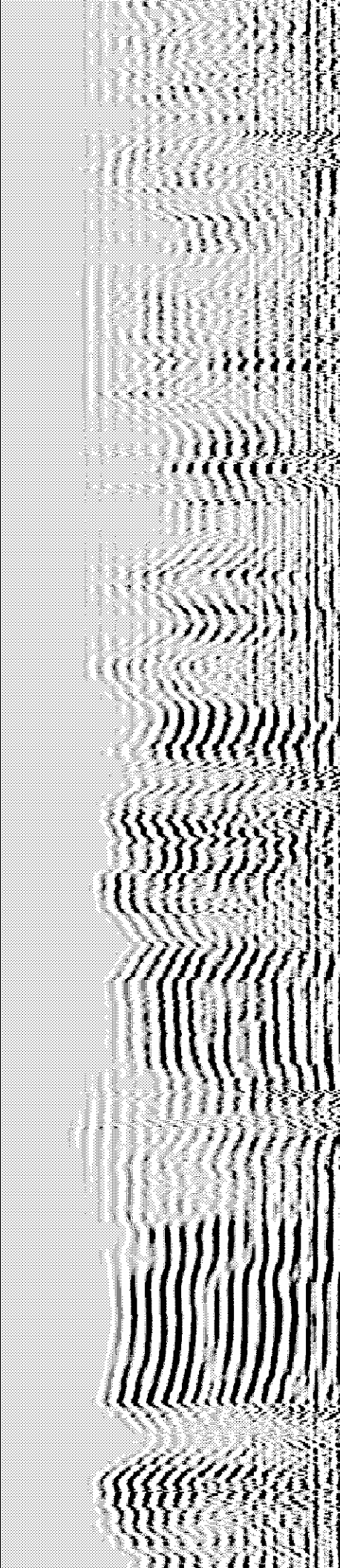
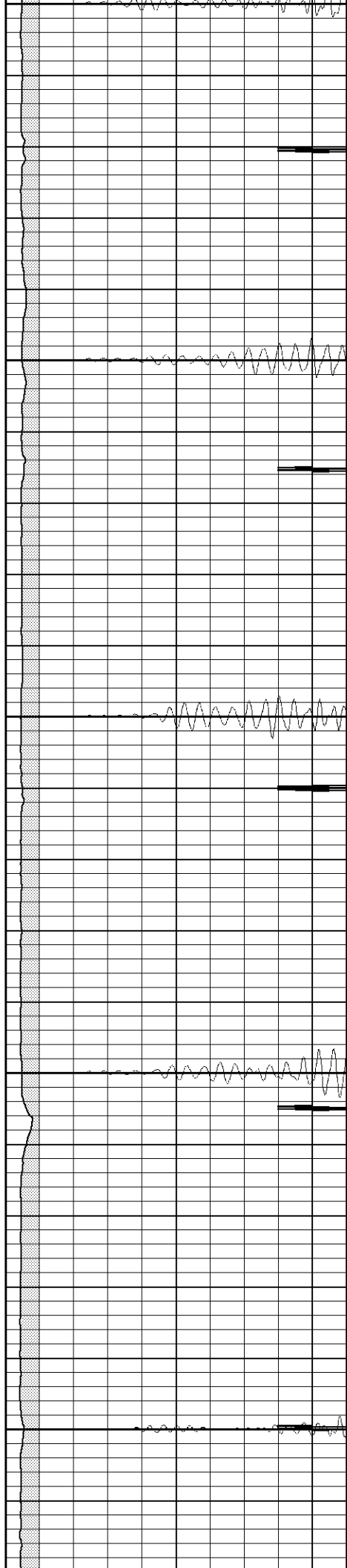
650

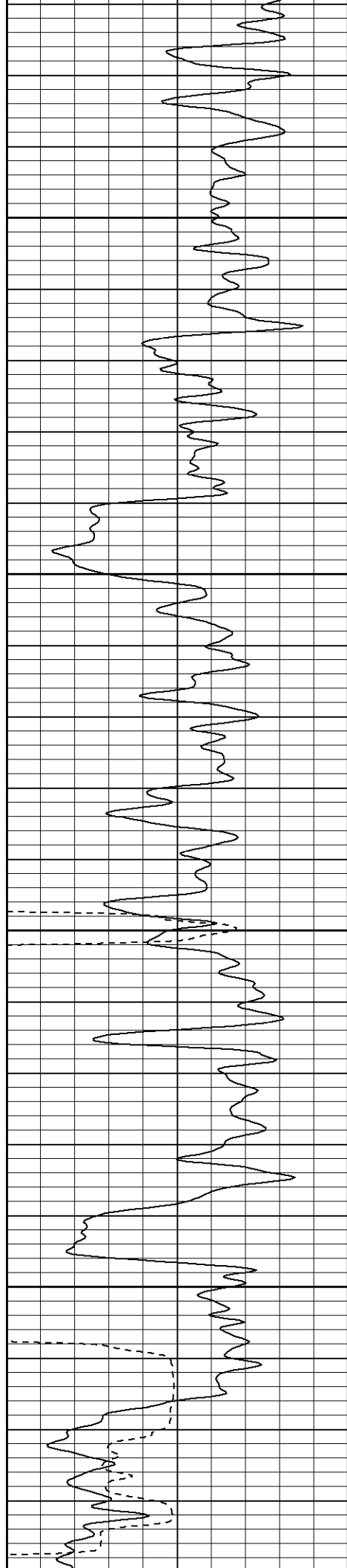
700

750

800

850



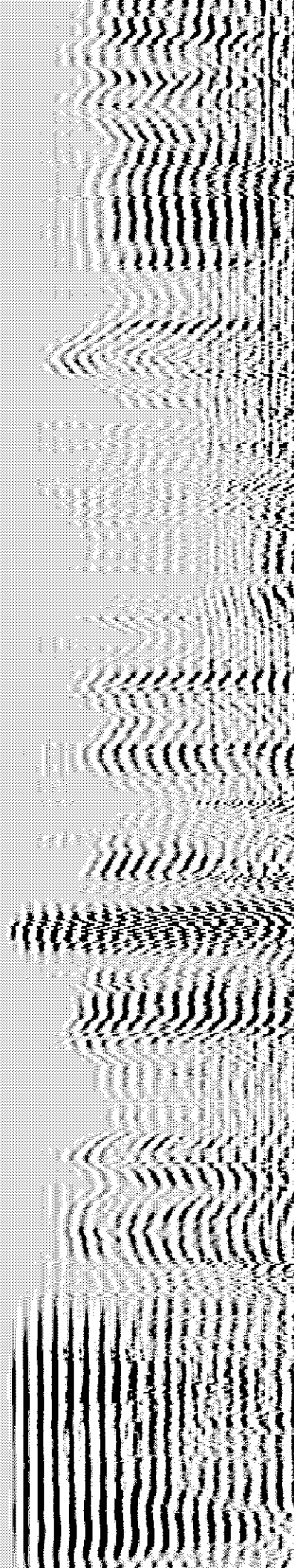
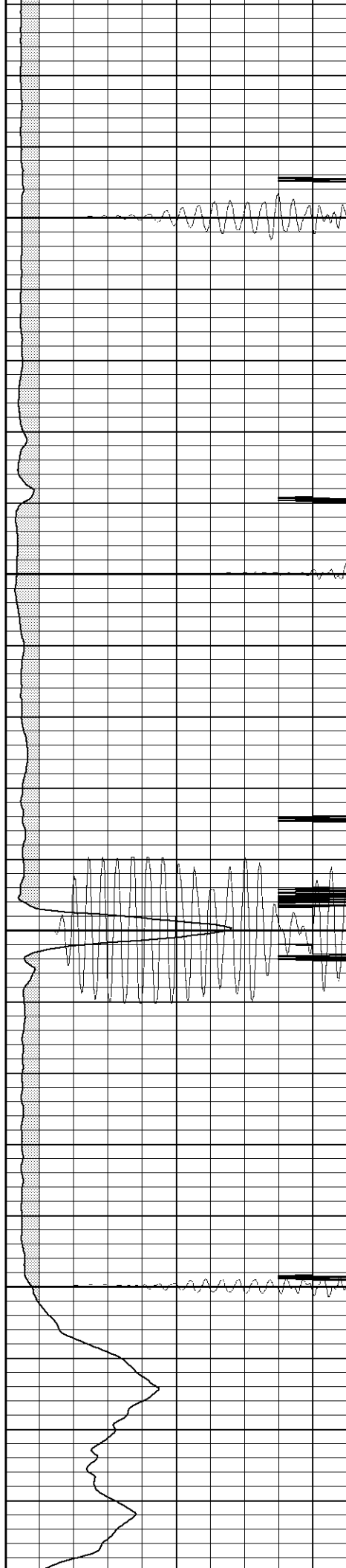


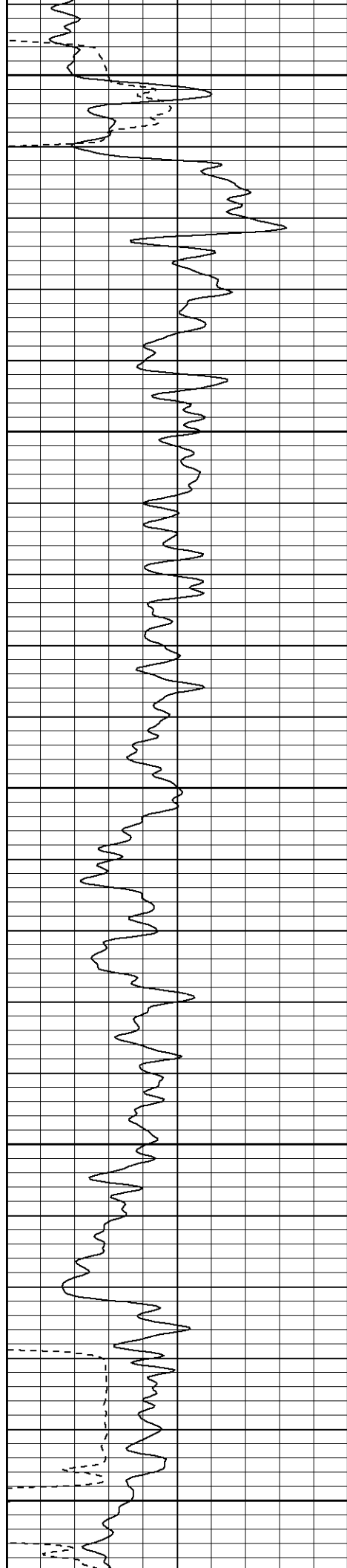
900

950

1000

1050





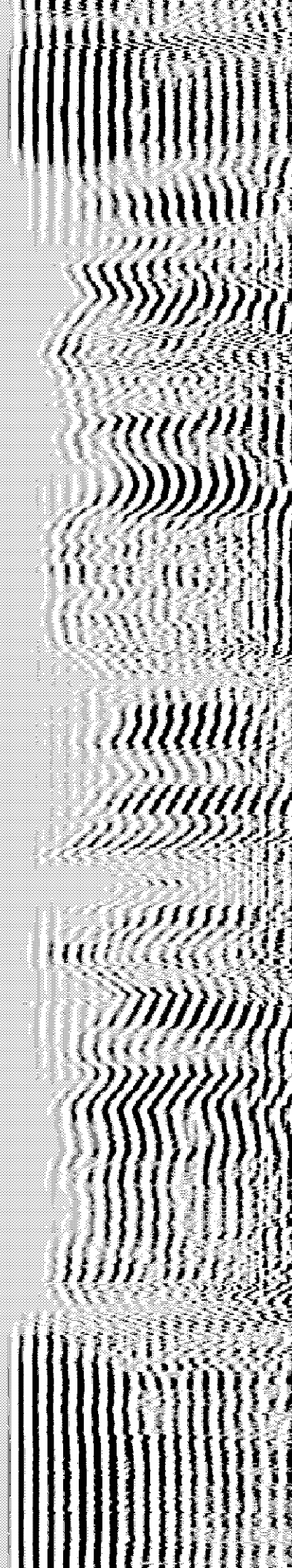
1100

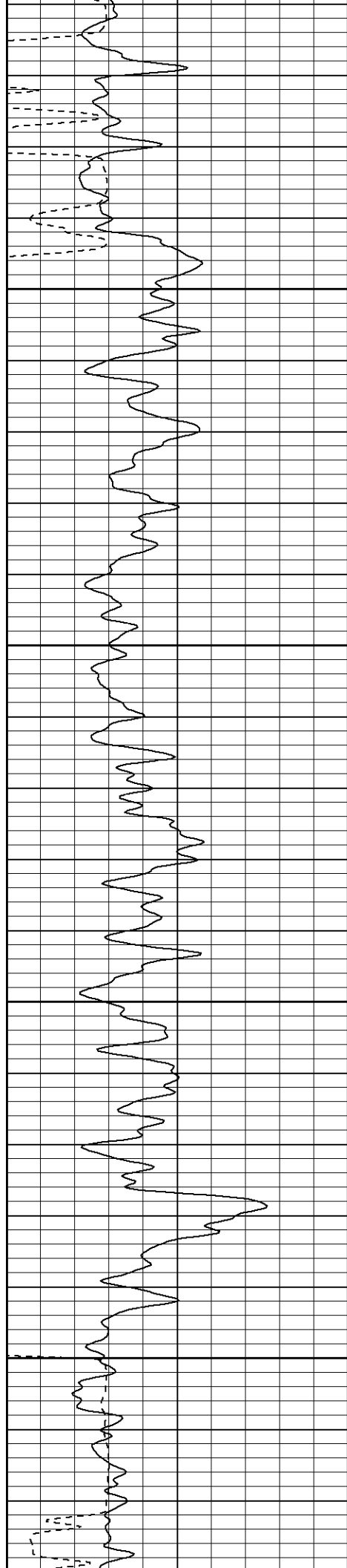
1150

1200

1250

1300



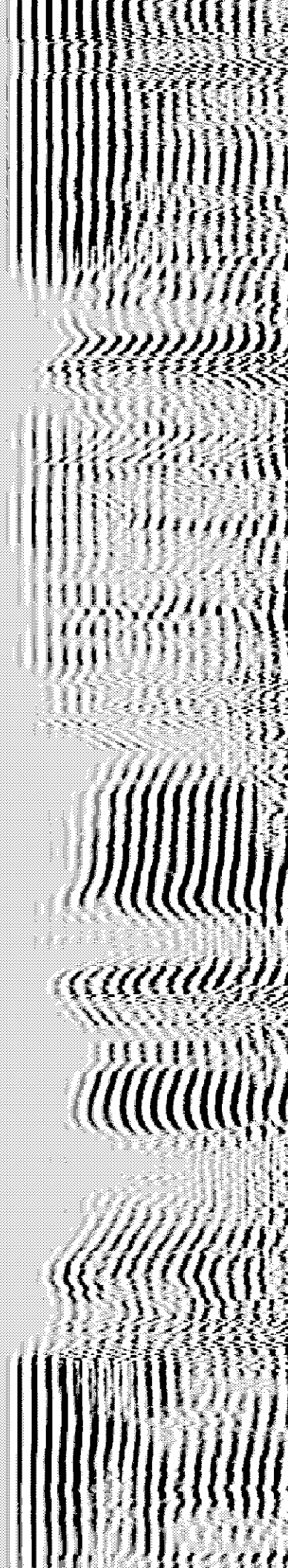
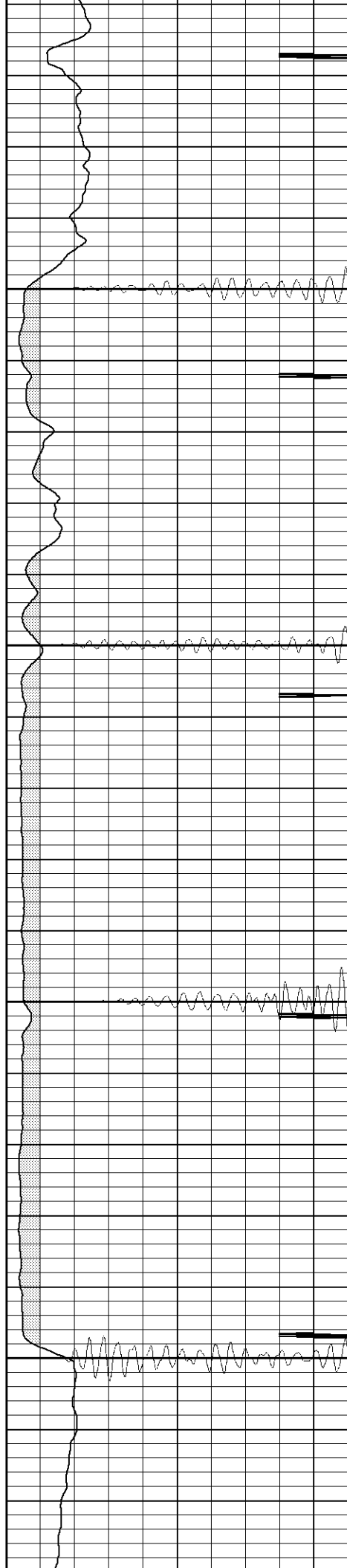


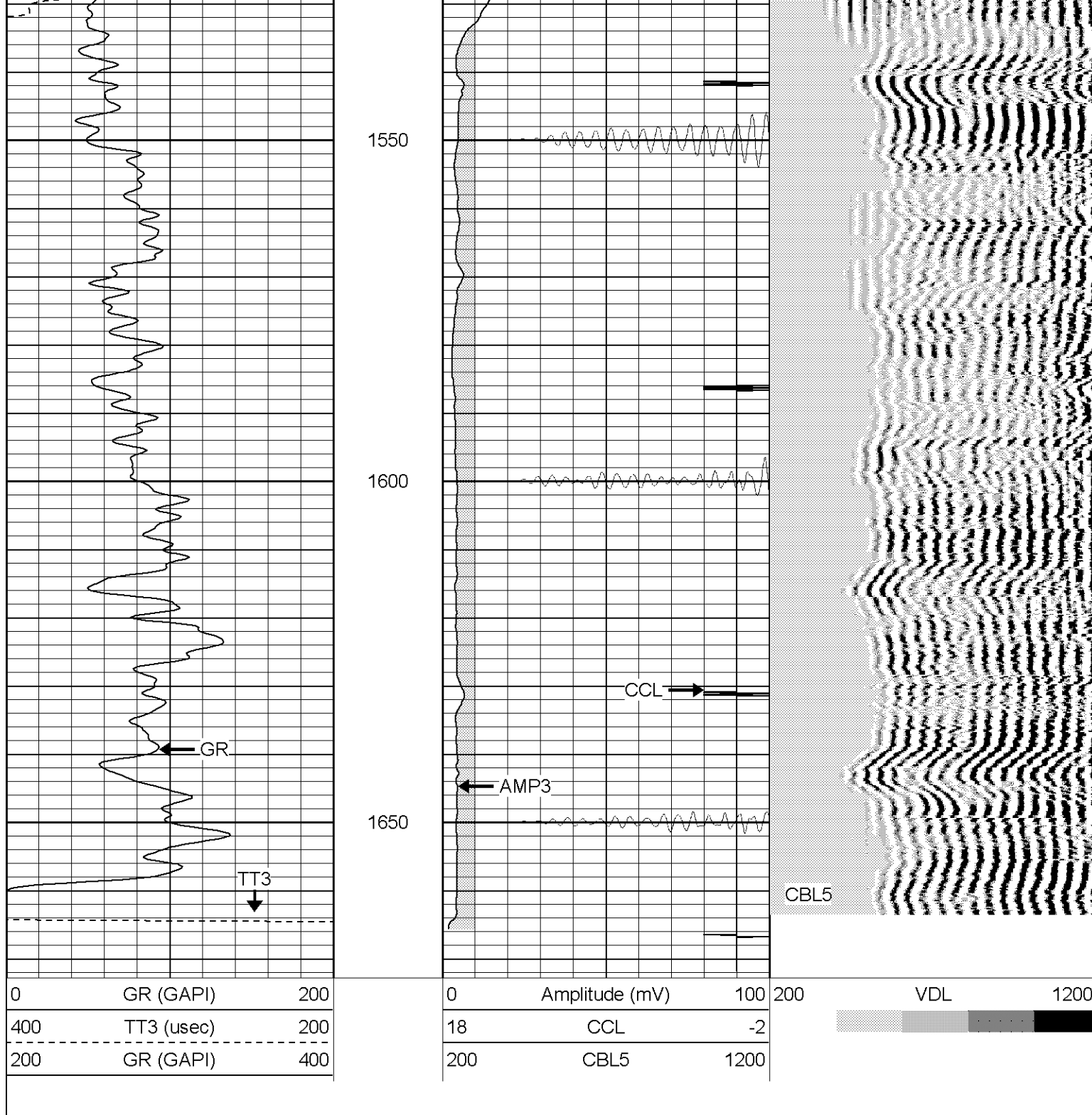
1350

1400

1450

1500



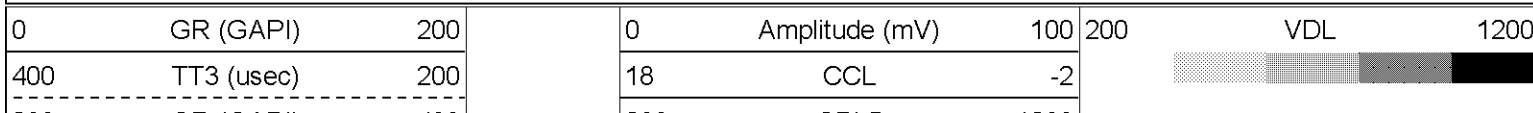


SUPERIOR

Black Lick, Pa.
Mercer, Pa.
Wooster, Oh.
Cleveland, Ok.
Trinidad, Co.

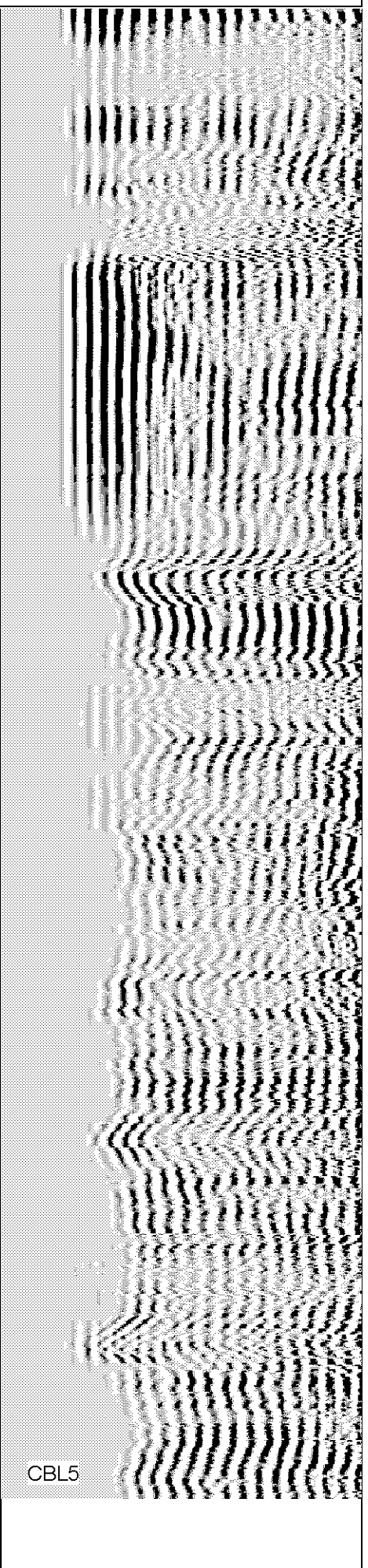
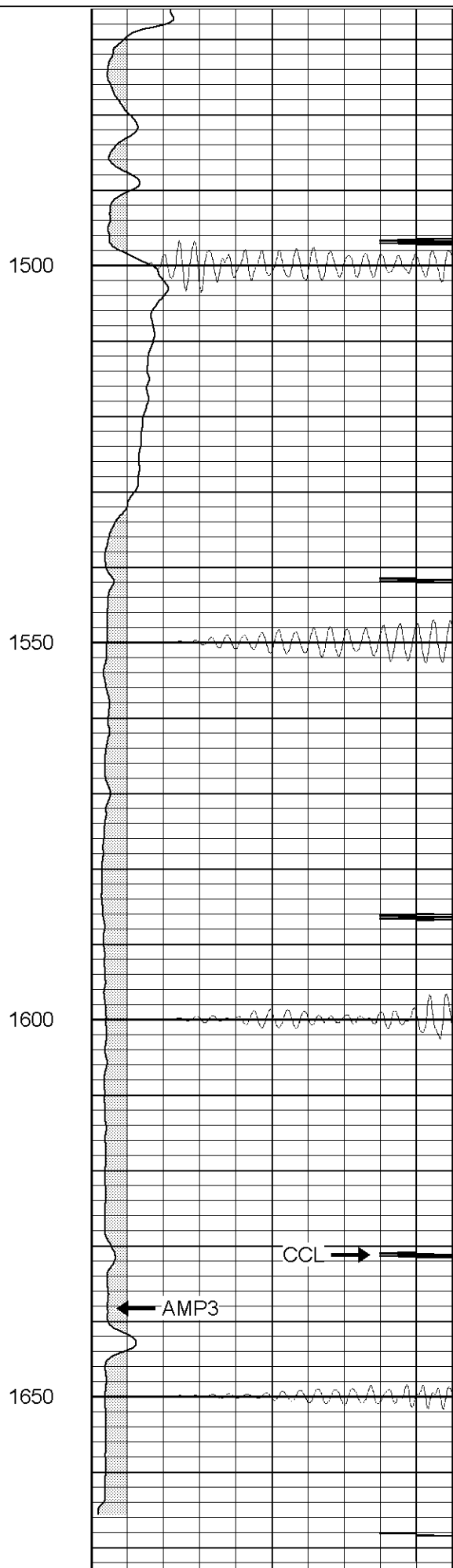
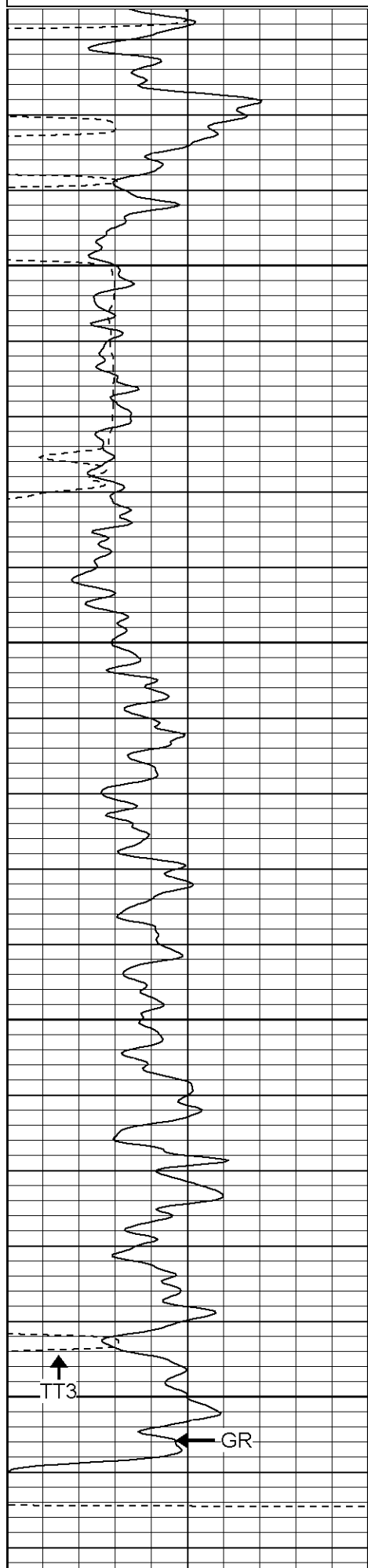
Repeat Pass 0 PSI

Database File: apache canyon35-14-2051707.db
 Dataset Pathname: pass1
 Presentation Format: cblrt
 Dataset Creation: Thu May 17 11:08:17 2007 by Log Open-Cased 060407
 Charted by: Depth in Feet scaled 1:240



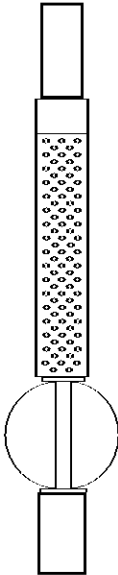
200 GR (GAPI) 400

200 CBL5 1200



400	TT3 (usec)	200	18	CCL	-2	
200	GR (GAPI)	400	200	CBL5	1200	

Cement Bond Log Calibration Report			
Serial Number:	Titan5		
Tool Model:	T5		
Performed:	Sat May 12 08:25:43 2007		
Depth:	0	ft	
Casing Diameter:	0	in	
	3' Spacing	5' Spacing	
Signal Zero:	1	1	mV
Calibrated Amplitude:	72	85	mV
Reading at Signal Zero:	0	0.01	V
Reading in Free Pipe:	0.89	0.9	V
Gain:	79.7753	94.382	
Offset:	2	0.0561798	
Gamma Ray Calibration Report			
Serial Number:	Titan5		
Tool Model:	T2		
Performed:	Tue May 01 18:07:14 2007		
Calibrator Value:	200.0	GAPI	
Background Reading:	54.0	cps	
Calibrator Reading:	219.0	cps	
Sensitivity:	1.1600	GAPI/cps	

Sensor	Offset (ft)	Schematic	Description	Len (ft)	OD (in)	Wt (lb)
GR	13.64		GR-T2 (Titan5)	2.52	2.44	25.00
WVF5 WVF3	9.49 8.49		CBL-T5 (Titan5)	7.23	2.44	110.00
CENT	5.15		X	3.00	1.69	25.00
CCL	0.83		CCL-T5 (Titan5) Long	2.15	2.75	15.00
			Dataset: /field/well/run1/_plots/_jobs_/cbl Total Length: 14.91 ft Total Weight: 175.00 lb O.D. 2.75 in			