

Patterson

**DUAL
INDUCTION
LOG**

Company XTO Energy Inc.		Company XTO Energy Inc.	
Well Golden Eagle 20-04		Well Golden Eagle 20-04	
Field Purgatoire River		Field Purgatoire River	
County Las Animas		County Las Animas	
State Colorado		State Colorado	
Location: API # : 05 071 08599 00		Other Services CDL NEUTRON	
SEC 20 TWP 33S RGE 67W		Elevation	
Permanent Datum	Ground Level	Elevation	7697'
Log Measured From	Ground Level		
Drilling Measured From	Ground Level		
Date 12-06-05			
Run Number	One		
Depth Driller	2575'		
Depth Logger	2570'		
Bottom Logged Interval	2568		
Top Log Interval	Surface Casing		
Casing Driller	8.625 @ 1196'		
Casing Logger	1197'		
Bit Size	7.875		
Type Fluid in Hole	Water		
Density / Viscosity	///		
pH / Fluid Loss	///		
Source of Sample	///		
Rm @ Meas. Temp	///		
Rmf @ Meas. Temp	///		
Rmc @ Meas. Temp	///		
Source of Rmf / Rmc	///		
Rm @ BHT	///		
Time Circulation Stopped	3:00 P.M.		
Time Logger on Bottom	5:20 P.M.		
Maximum Recorded Temperature	112 DEG F		
Equipment Number	T720		
Location	Trinidad		
Recorded By	R. Taylor		
Witnessed By	Mr. Don Johnson		

<<< Fold Here >>>

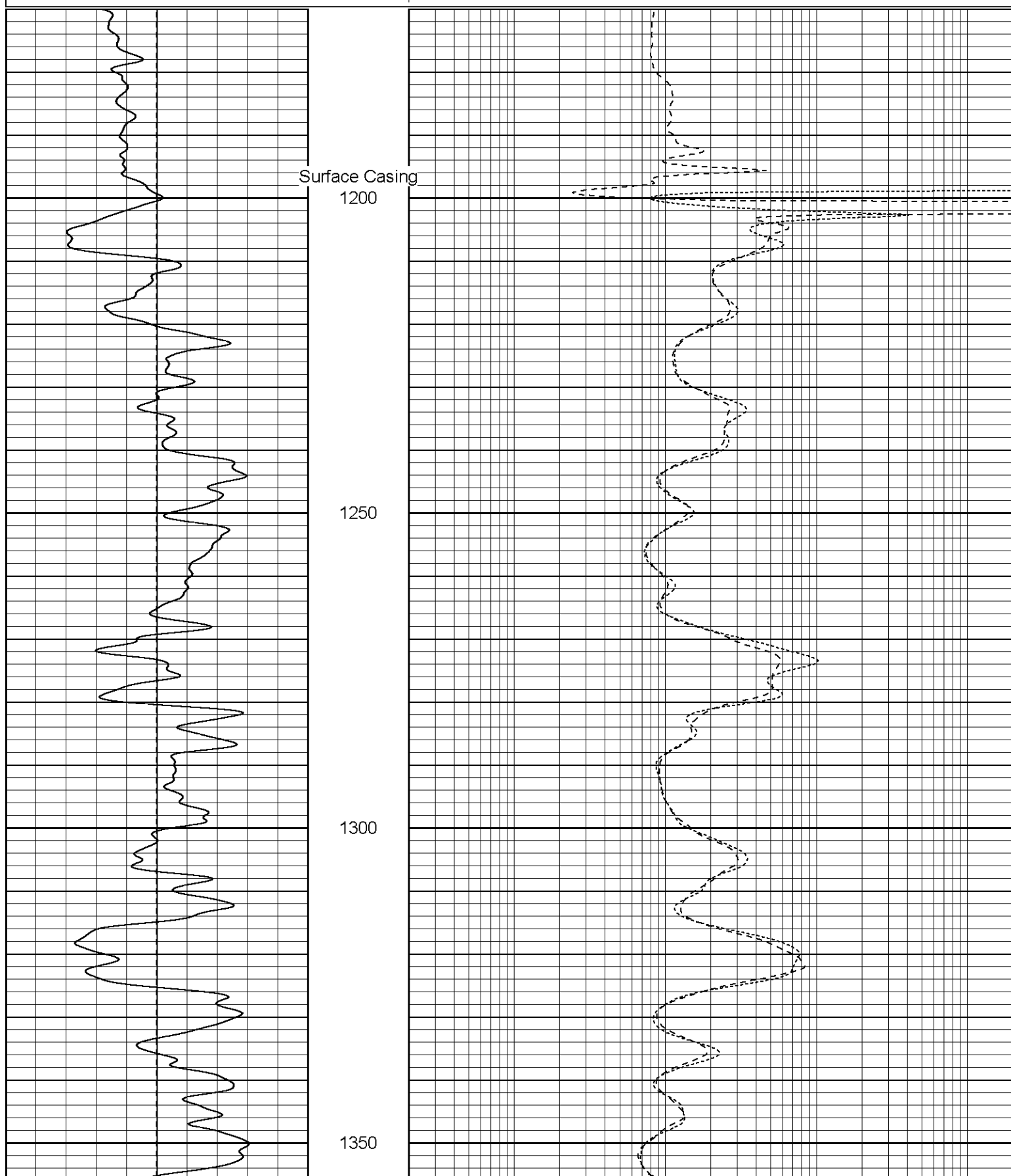
All interpretations are opinions based on inferences from electrical or other measurements and we cannot and do not guarantee the accuracy or correctness of any interpretation, and we shall not, except in the case of gross or willful negligence on our part, be liable or responsible for any loss, costs, damages, or expenses incurred or sustained by anyone resulting from any interpretation made by any of our officers, agents or employees. These interpretations are also subject to our general terms and conditions set out in our current Price Schedule.

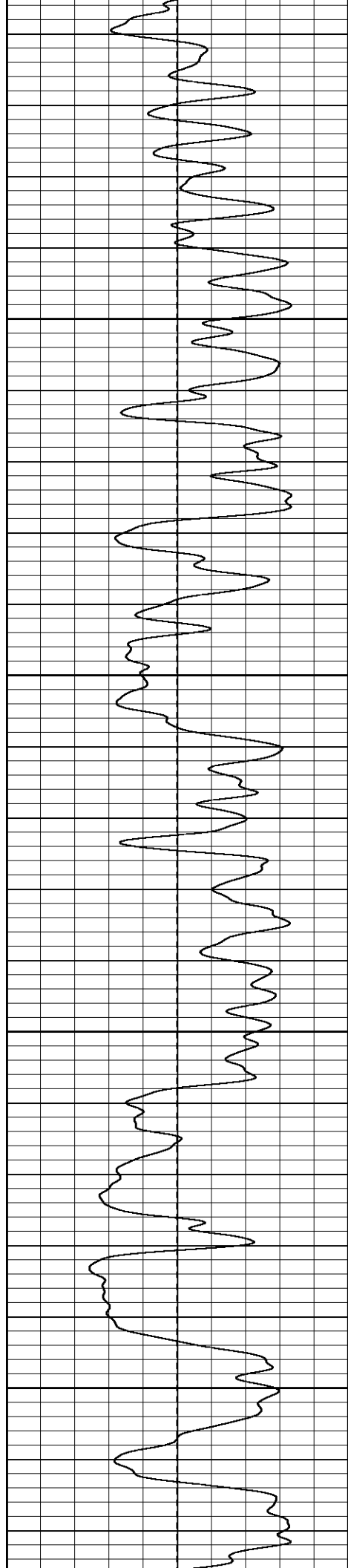
Comments
<p>Well Directions:</p> <p>4 Miles Past Weston On Hwy 12. Right thru Gate. Stay On Main Rd To T. Left, Stay Left Up Hill To Location</p>

Database File: xtoge2004120405.db
Dataset Pathname: pass5.1
Presentation Format: dil
Dataset Creation: Tue Dec 06 18:40:44 2005 by Calc Warrior 7.0 STD Ope
Charted by: Depth in Feet scaled 1:240

0	GR (GAPI)	200
-100	SP (mV)	100

0.2	RILM (Ohm-m)	2000
0.2	RILD (Ohm-m)	2000
0.2	RLL3 (Ohm-m)	2000



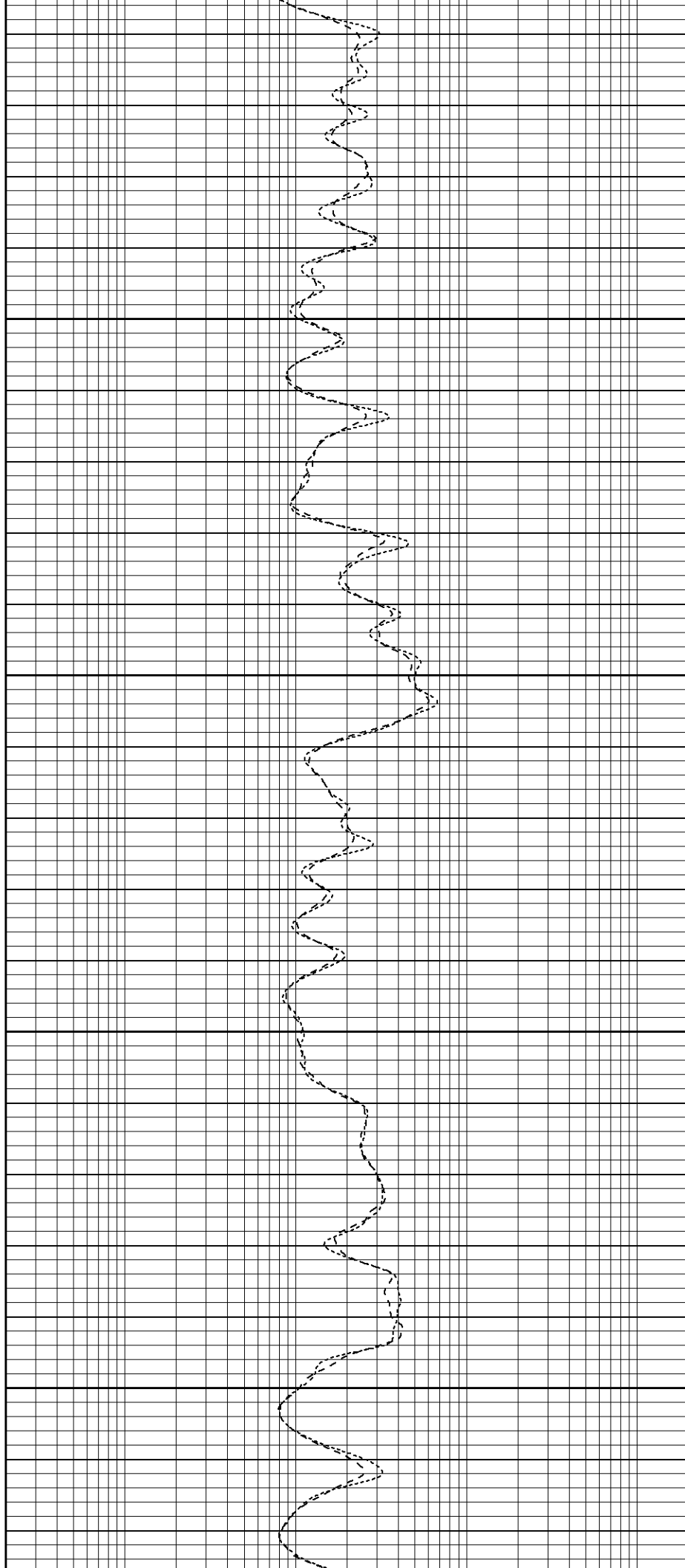


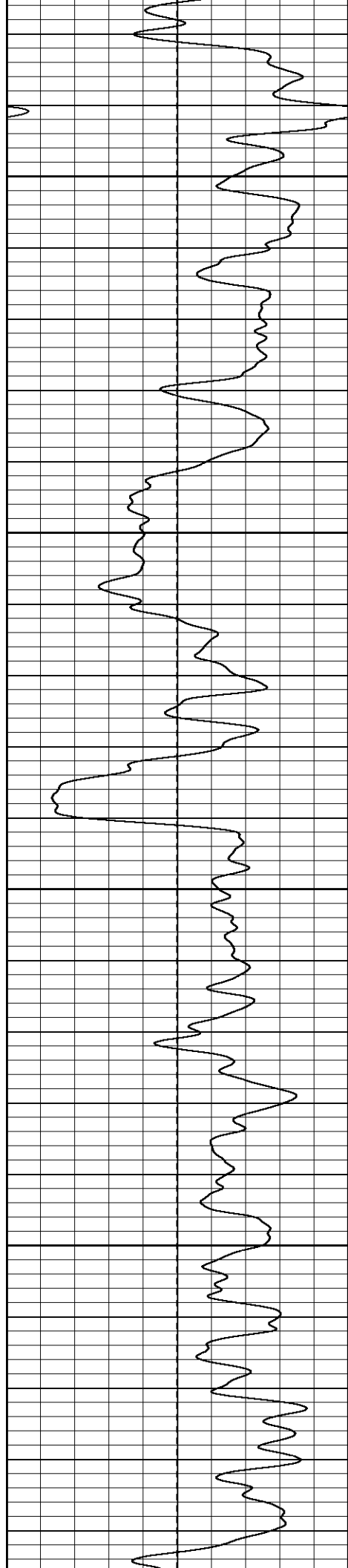
1400

1450

1500

1550



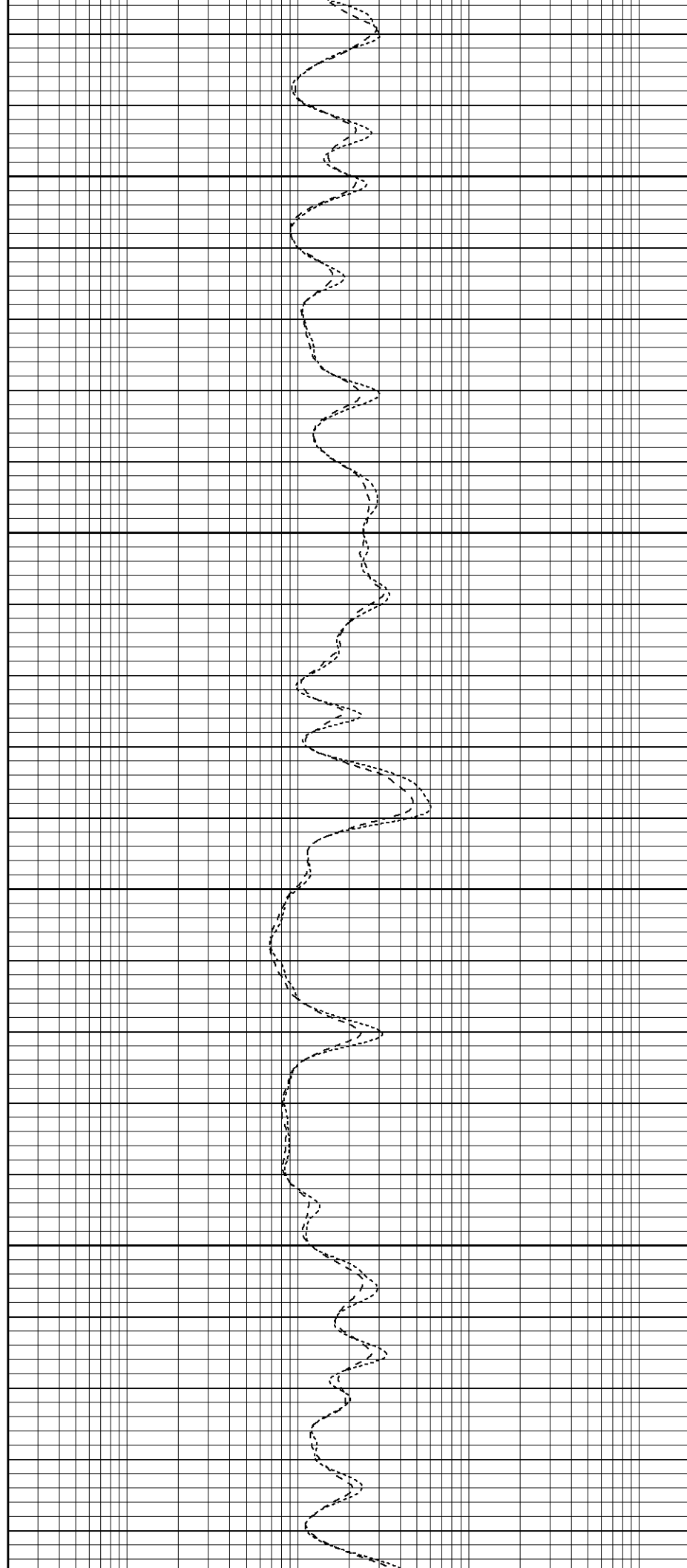


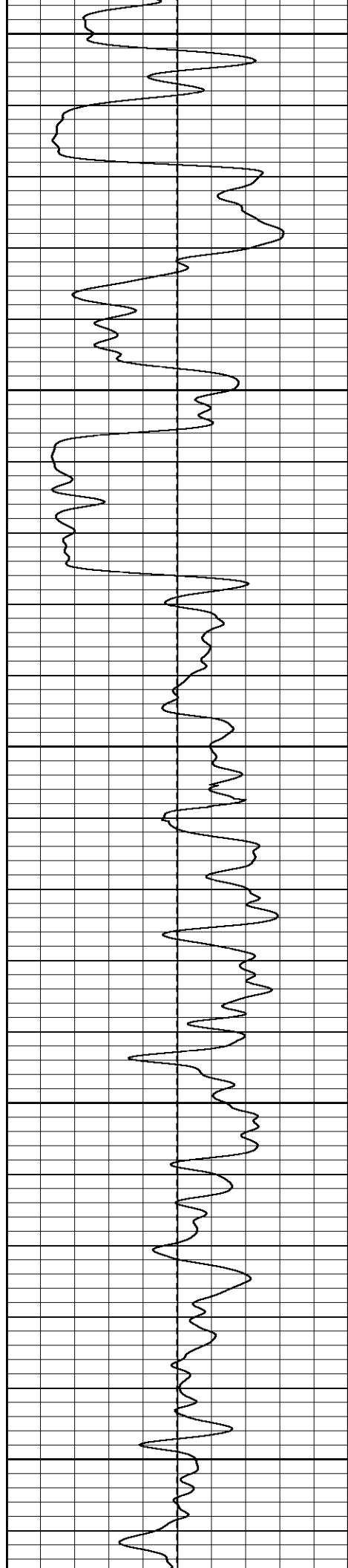
1600

1650

1700

1750





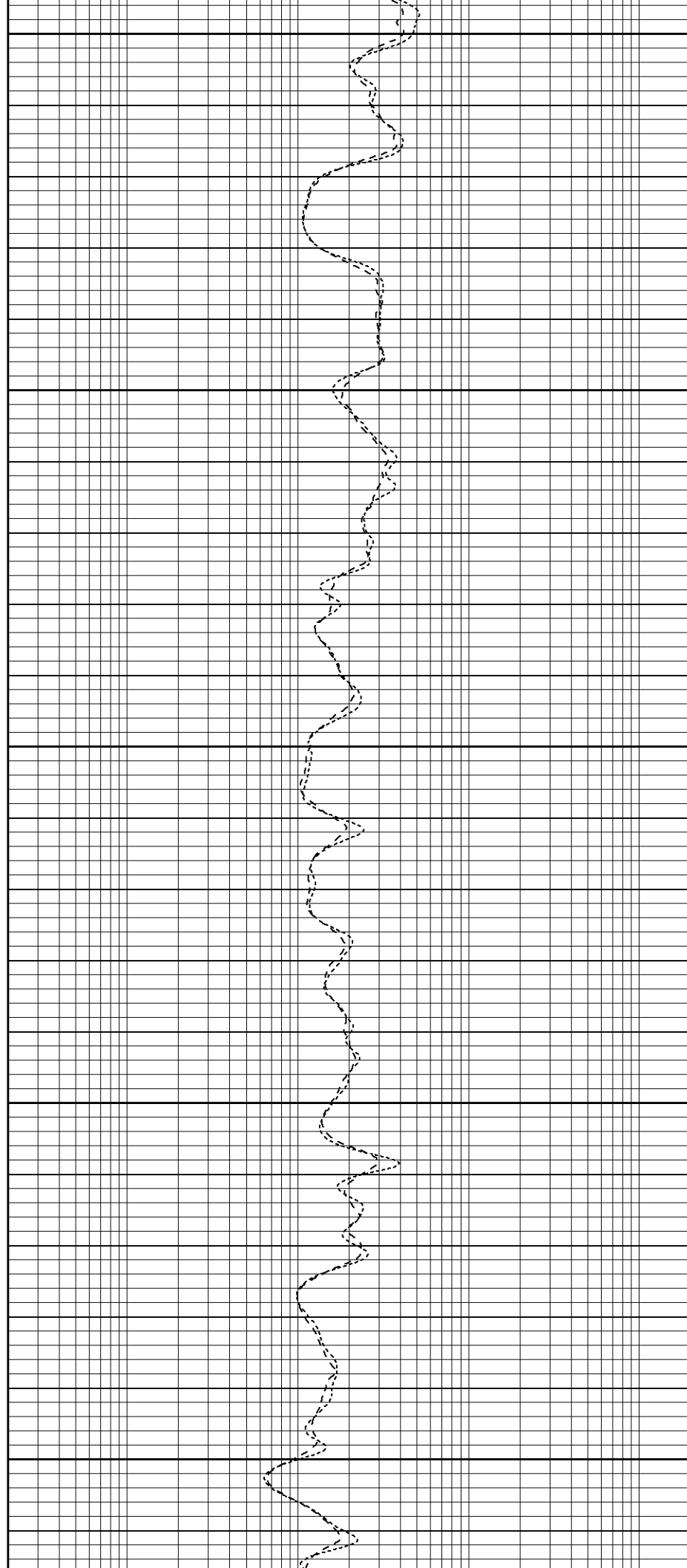
1800

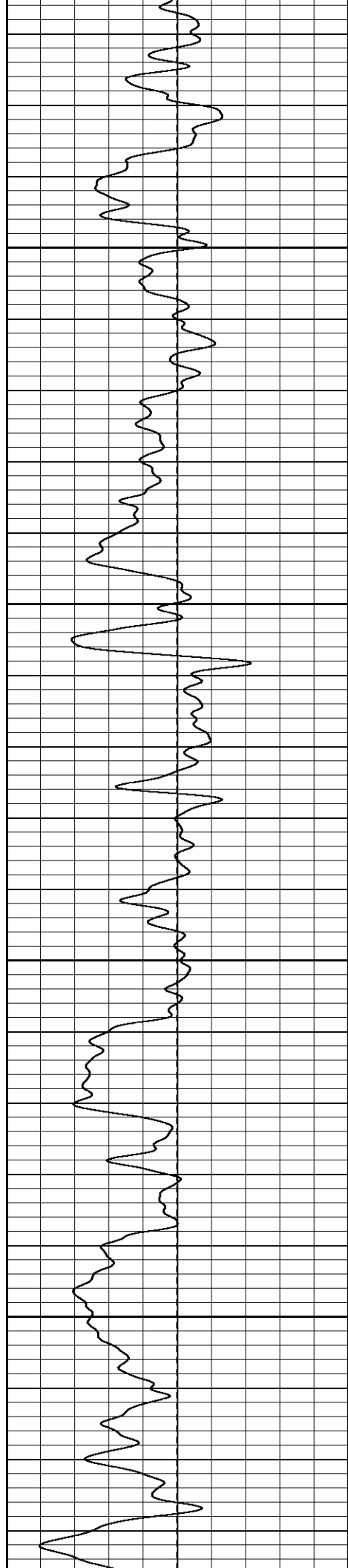
1850

1900

1950

2000



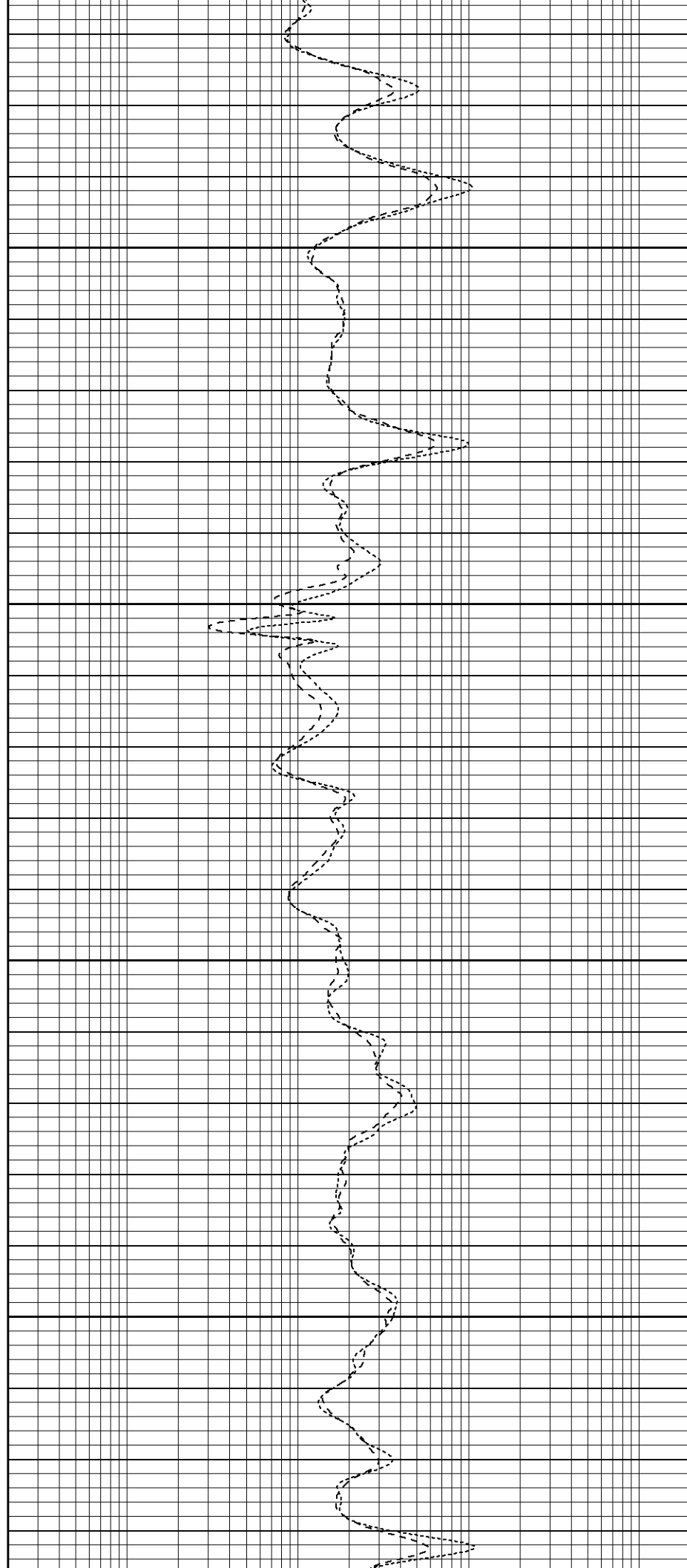


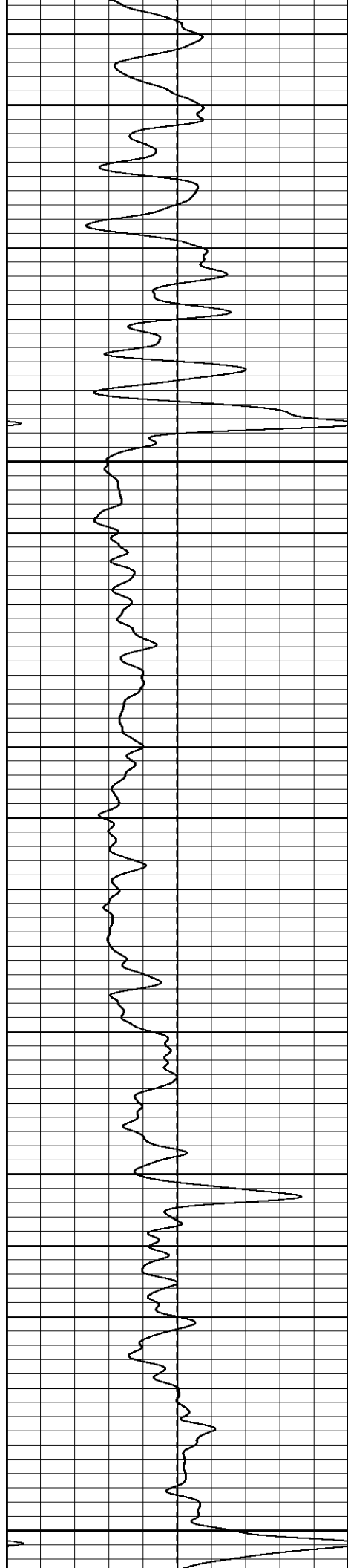
2050

2100

2150

2200





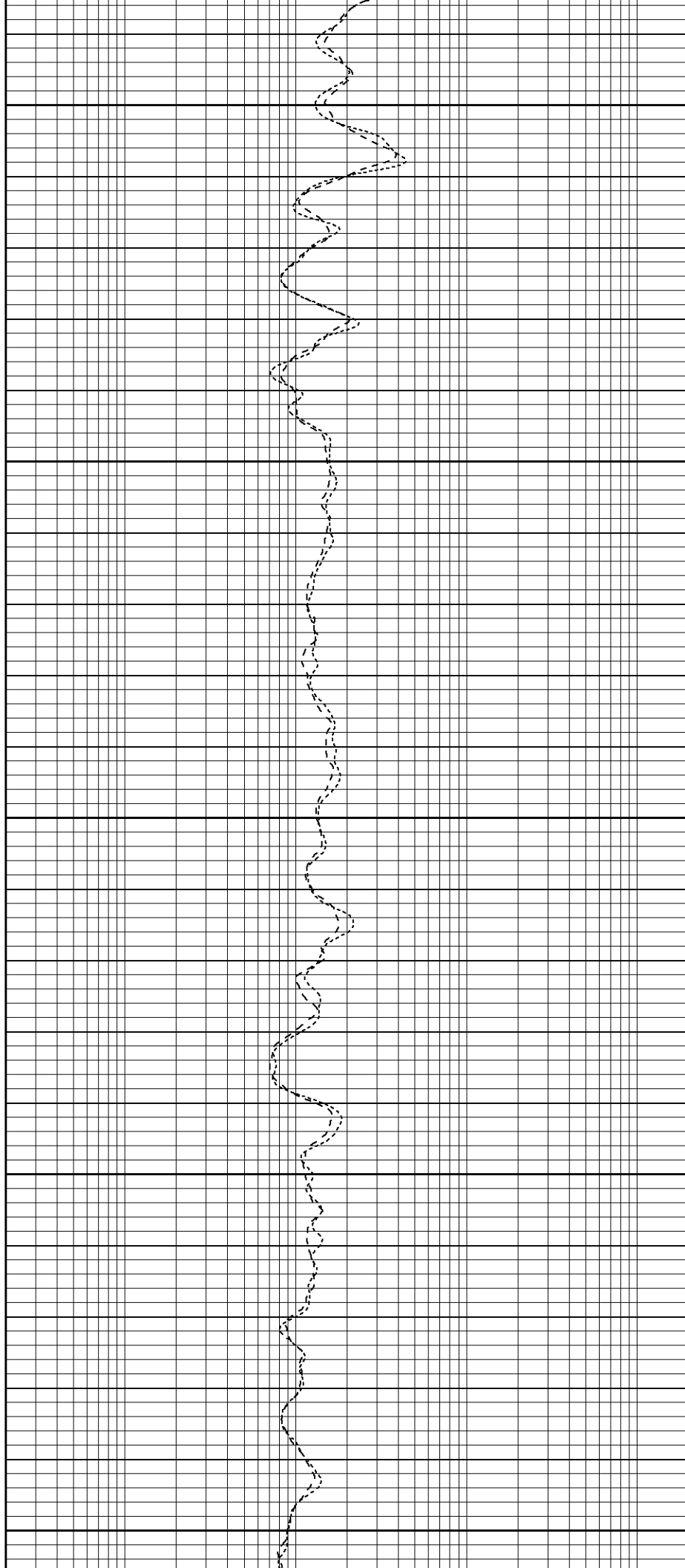
2250

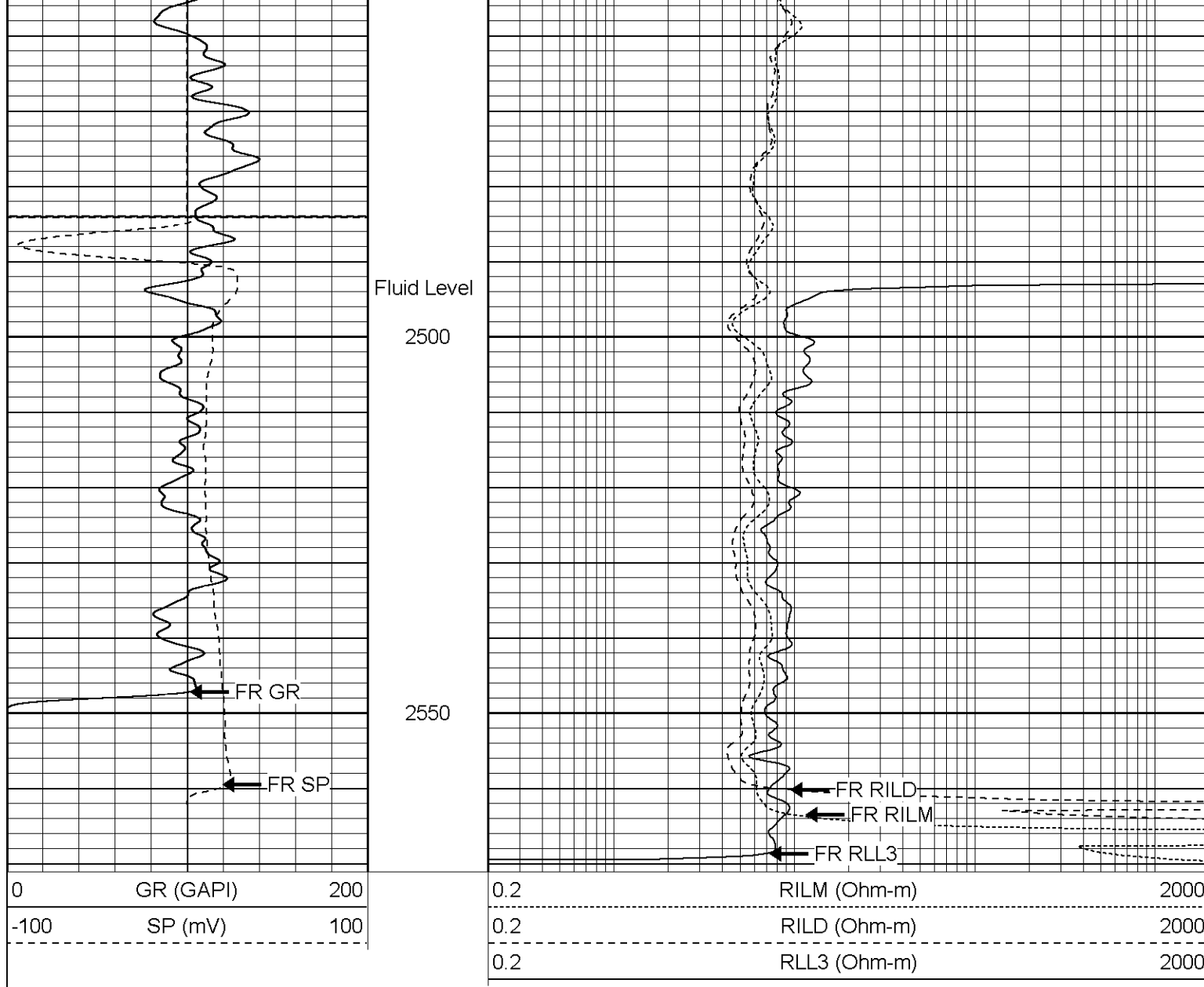
2300

2350

2400

2450



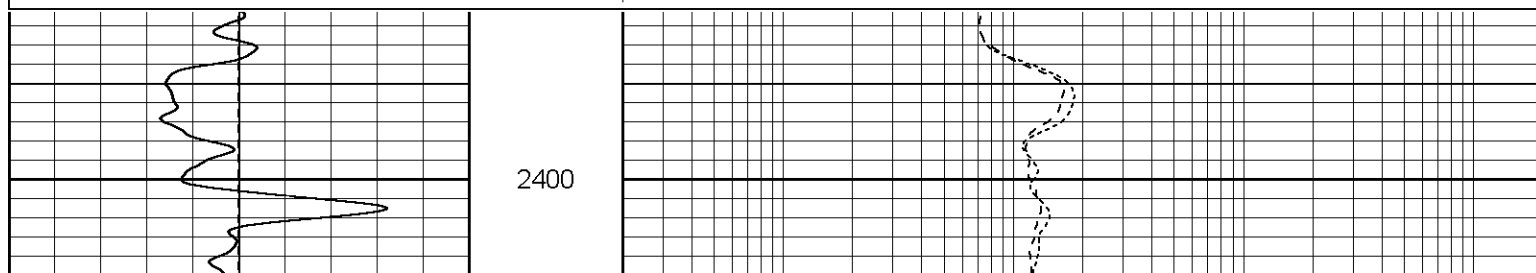


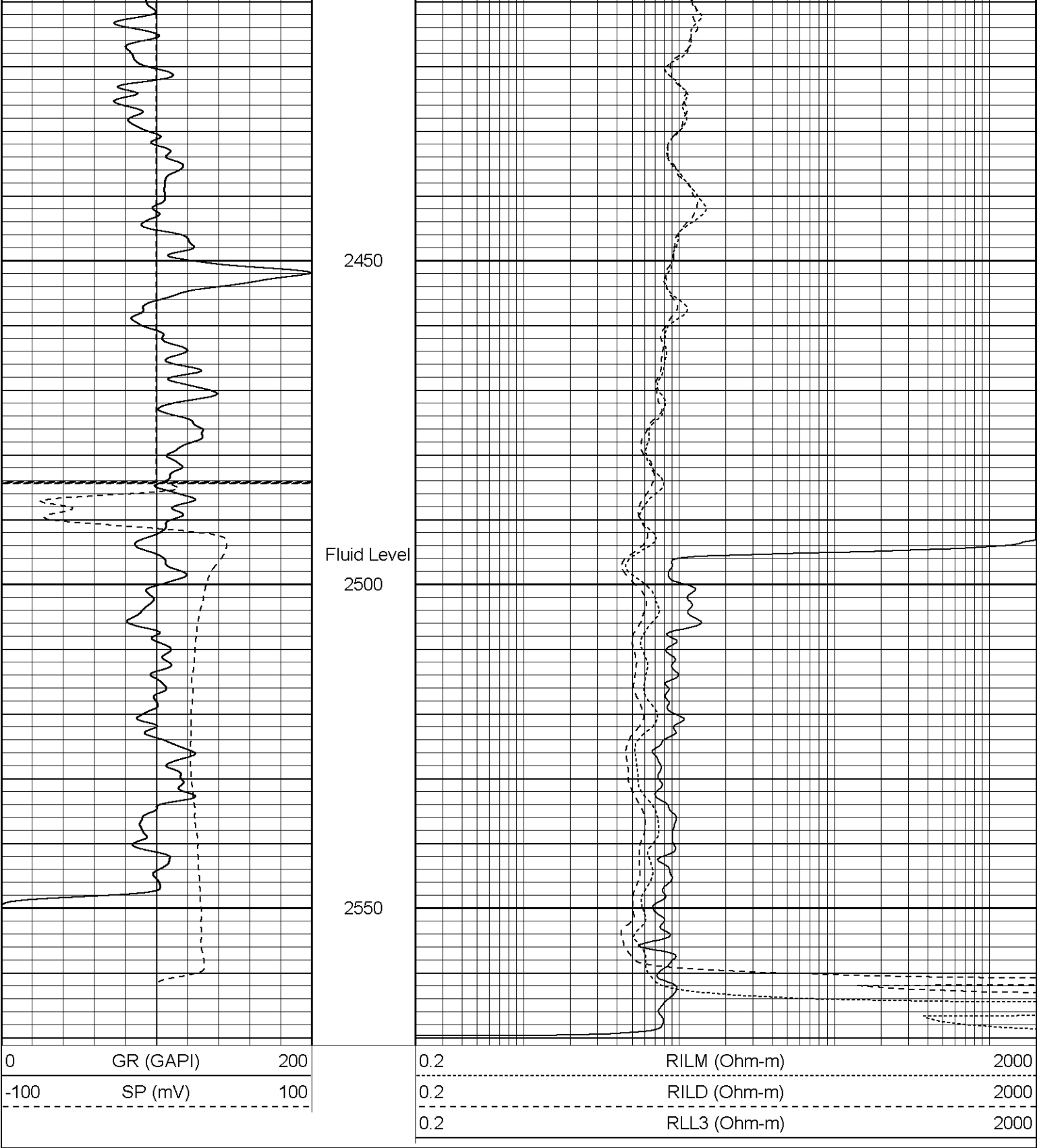
Patterson

Repeat Section

Database File: xtoge2004120405.db
 Dataset Pathname: pass4.1
 Presentation Format: dil
 Dataset Creation: Tue Dec 06 18:45:52 2005 by Calc Warrior 7.0 STD Ope
 Charted by: Depth in Feet scaled 1:240

0	GR (GAPI)	200	0.2	RILM (Ohm-m)	2000
-100	SP (mV)	100	0.2	RILD (Ohm-m)	2000
			0.2	RLL3 (Ohm-m)	2000





Dual Induction Calibration Report

Serial-Model:	5375-G
Surface Cal Performed:	Fri Nov 04 11:47:57 2005
Downhole Cal Performed:	Sun Dec 04 11:51:51 2005
After Survey Verification Performed:	Sun Dec 04 11:51:51 2005

Surface Calibration

Readings

References

Results

Loop:	Air	Loop		Air	Loop		m	b
Deep	0.012	0.633	V	0.000	500.000	mmho-m	804.288	-9.342
Medium	0.016	0.752	V	0.000	550.000	mmho-m	747.433	-11.697
Internal:	Zero	Cal		Zero	Cal		m	b
Deep	0.012	0.636	V	0.000	500.000	mmho-m	800.610	-9.578
Medium	0.016	0.752	V	0.000	550.000	mmho-m	747.389	-12.066

Downhole Calibration								
	Readings			References			Results	
Internal:	Zero	Cal		Zero	Cal		m	b
Deep	1.512	503.799	mmho-m	0.280	502.577	mmho-m	1.000	-1.232
Medium	0.922	551.464	mmho-m	0.370	550.401	mmho-m	0.999	-0.551
Shallow	2.522	0.024	V	500.000	2.000	Ohm-m	199.331	-3.000

After Survey Verification								
	Readings			Targets			Results	
Internal:	Zero	Cal		Zero	Cal		m'	b'
Deep	0.000	0.000	mmho-m	1.512	503.799	mmho-m	1.000	-1.232
Medium	0.000	0.000	mmho-m	0.922	551.464	mmho-m	0.999	-0.551
Shallow	0.000	0.000	Ohm-m	500.000	2.000	Ohm-m	1.000	0.000

Gamma Ray Calibration Report								
Serial Number:			2001					
Tool Model:			OH					
Performed:			Fri Dec 02 18:00:15 2005					
Calibrator Value:			1.0		GAPI			
Background Reading:			0.0		cps			
Calibrator Reading:			1.0		cps			
Sensitivity:			0.2800		GAPI/cps			

Sensor	Offset (ft)	Schematic		Description	Len (ft)	OD (in)	Wt (lb)
CHD	25.08			None	0.75	1.50	5.00
GR	22.83			GR-OH (2001) SIE	3.50	3.25	40.00
CILD SP	10.60 10.60			DIL-G (5375) Gearhart	20.83	4.00	345.00
CILM	6.89						

