

**Patterson**

**CEMENT BOND  
GAMMA RAY**

Company XTO Energy Inc.  
Well Golden Eagle 22-05 X  
Field Purgatorie River  
County Las Animas  
State CO

Company XTO Energy Inc.  
Well Golden Eagle 22-05 X  
Field Purgatorie River  
County Las Animas  
State CO

Location: API #: 05 071 08731 00

FNL & FEL

SEC 22 TWP 33S RGE 67W

Permanent Datum Ground Level Elevation 7600'  
Log Measured From Ground Level  
Drilling Measured From Ground Level

Elevation

K.B. -----  
D.F. -----  
G.L. 7600'

Date 5/12/06

Run Number	two
Depth Driller	2355'
Depth Logger	2266'
Bottom Logged Interval	2262'
Top Log Interval	Surf.
Open Hole Size	7 7/8"
Type Fluid	water
Density / Viscosity	///
Max. Recorded Temp.	///
Estimated Cement Top	40'
Time Well Ready	5:40
Time Logger on Bottom	5:50
Equipment Number	T244
Location	Trinidad
Recorded By	Worley
Witnessed By	

Borehole Record		Tubing Record					
Run Number	Bit	From	To	Size	Weight	From	To

Casing Record	Size	Wgt/Ft	Top	Bottom
Surface String	8 5/8"		00	855'
Prot. String				
Production String	5 1/2"		00	NA
Liner				

<<< Fold Here >>>

All interpretations are opinions based on inferences from electrical or other measurements and we cannot and do not guarantee the accuracy or correctness of any interpretation, and we shall not, except in the case of gross or willful negligence on our part, be liable or responsible for any loss, costs, damages, or expenses incurred or sustained by anyone resulting from any interpretation made by any of our officers, agents or employees. These interpretations are also subject to our general terms and conditions set out in our current Price Schedule.

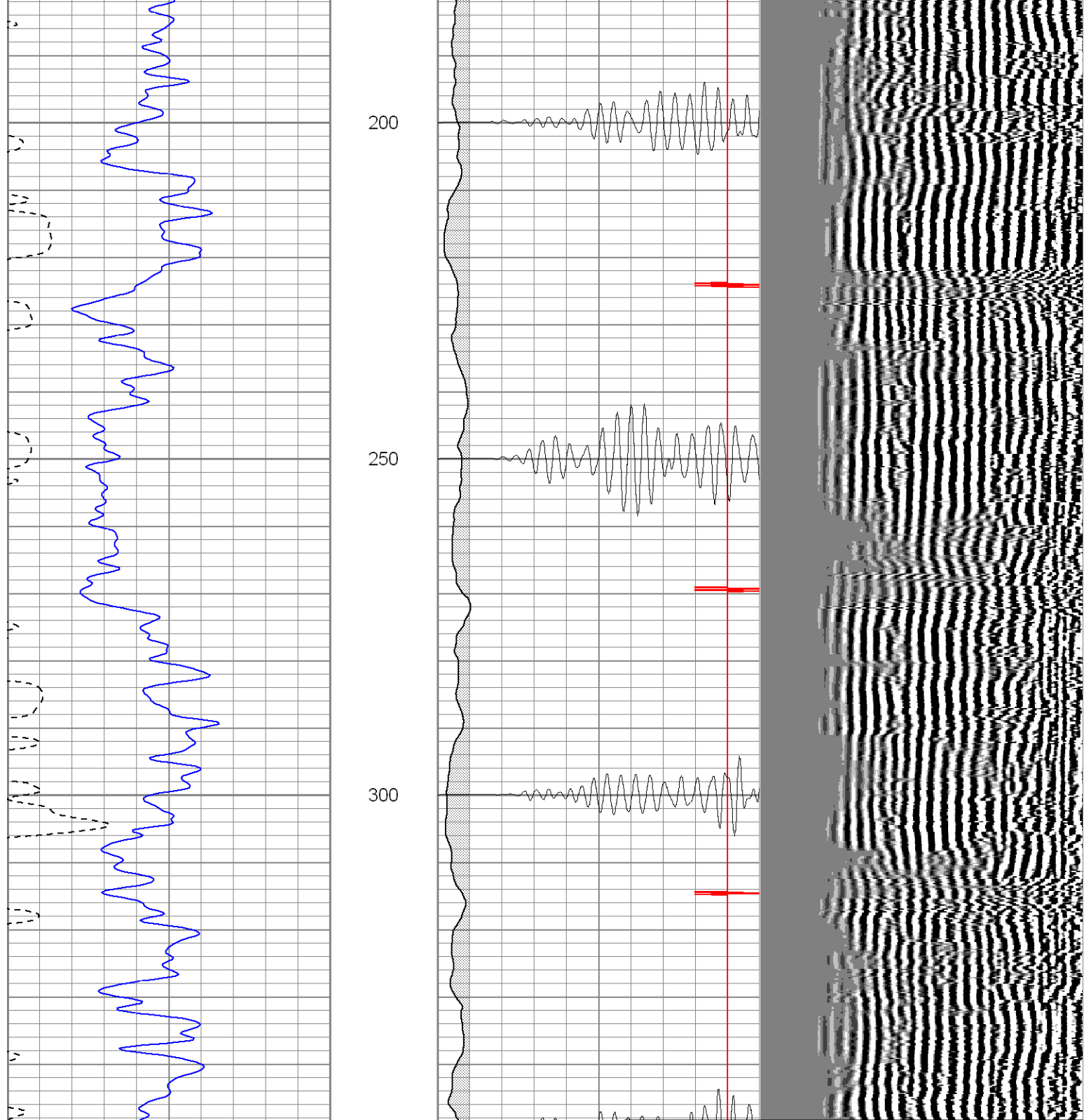
Comments

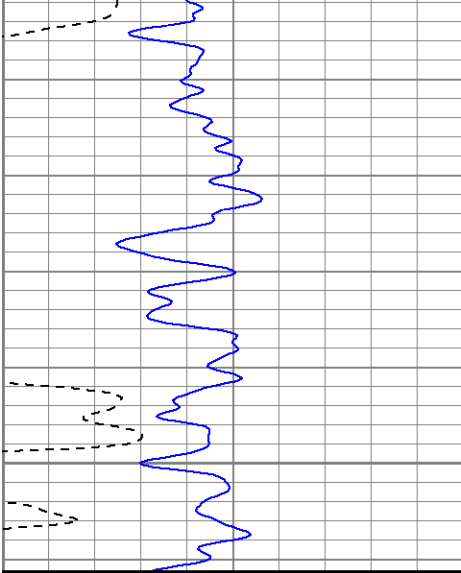
Hwy 12, Two Miles Past Weston, Turn Right (Lopez Canyon), Thru Gate, Stay On Main Road, @ T Stay Right, @ Y Stay Right, 2nd Left To Location.

**Patterson**

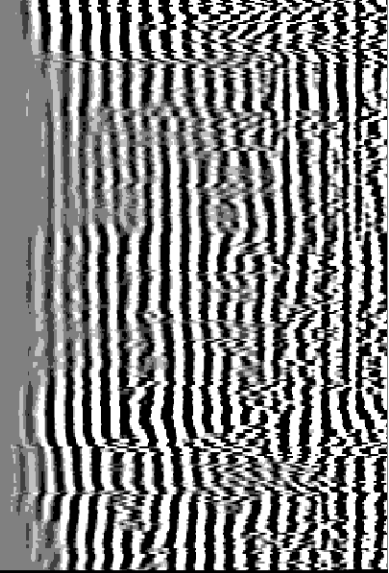
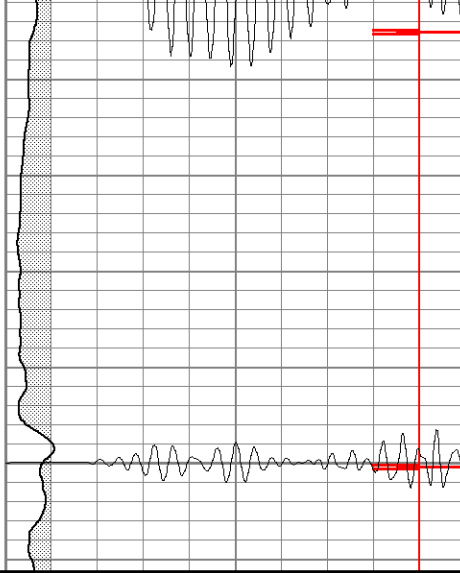
**Main Pass**

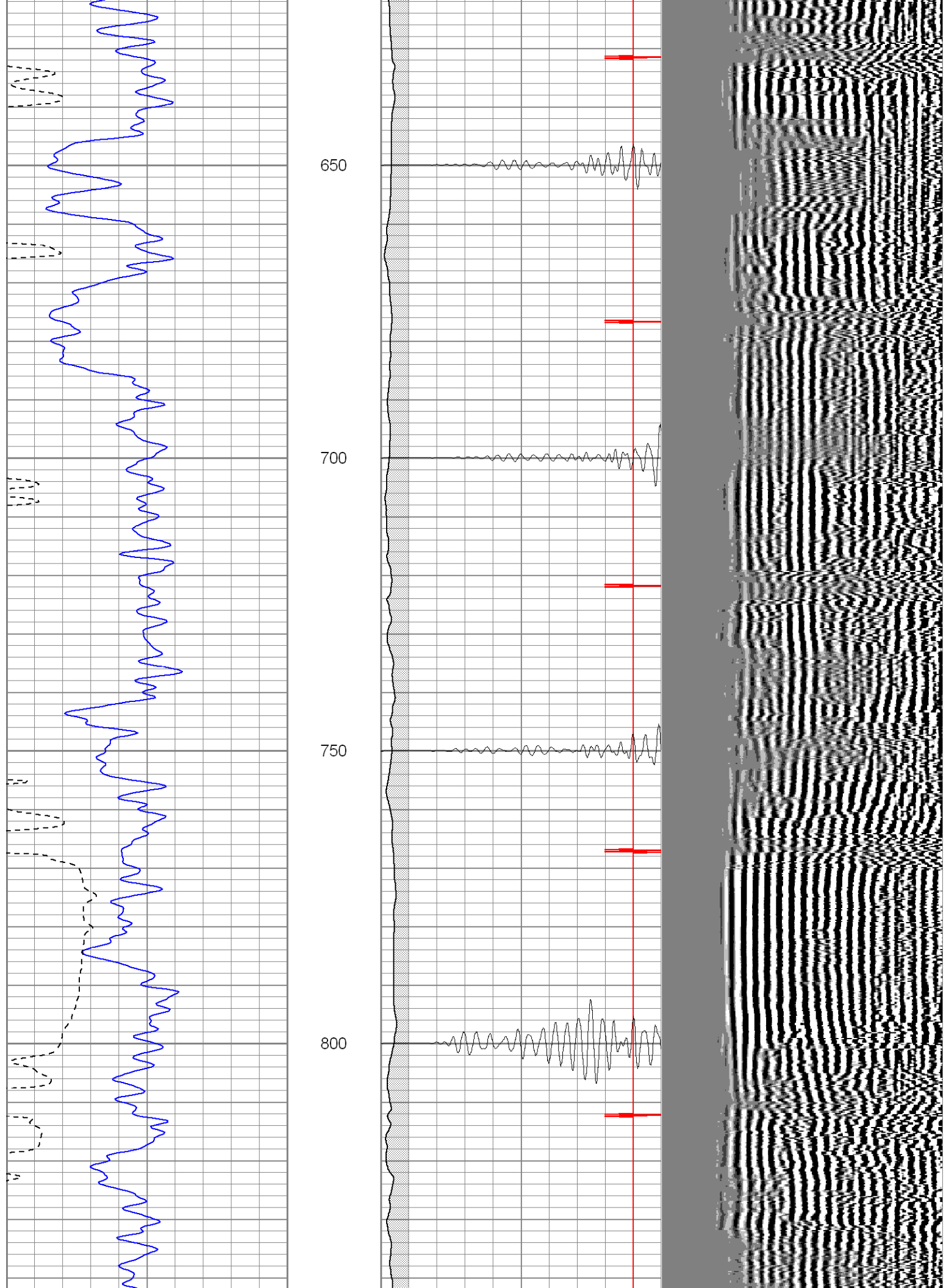


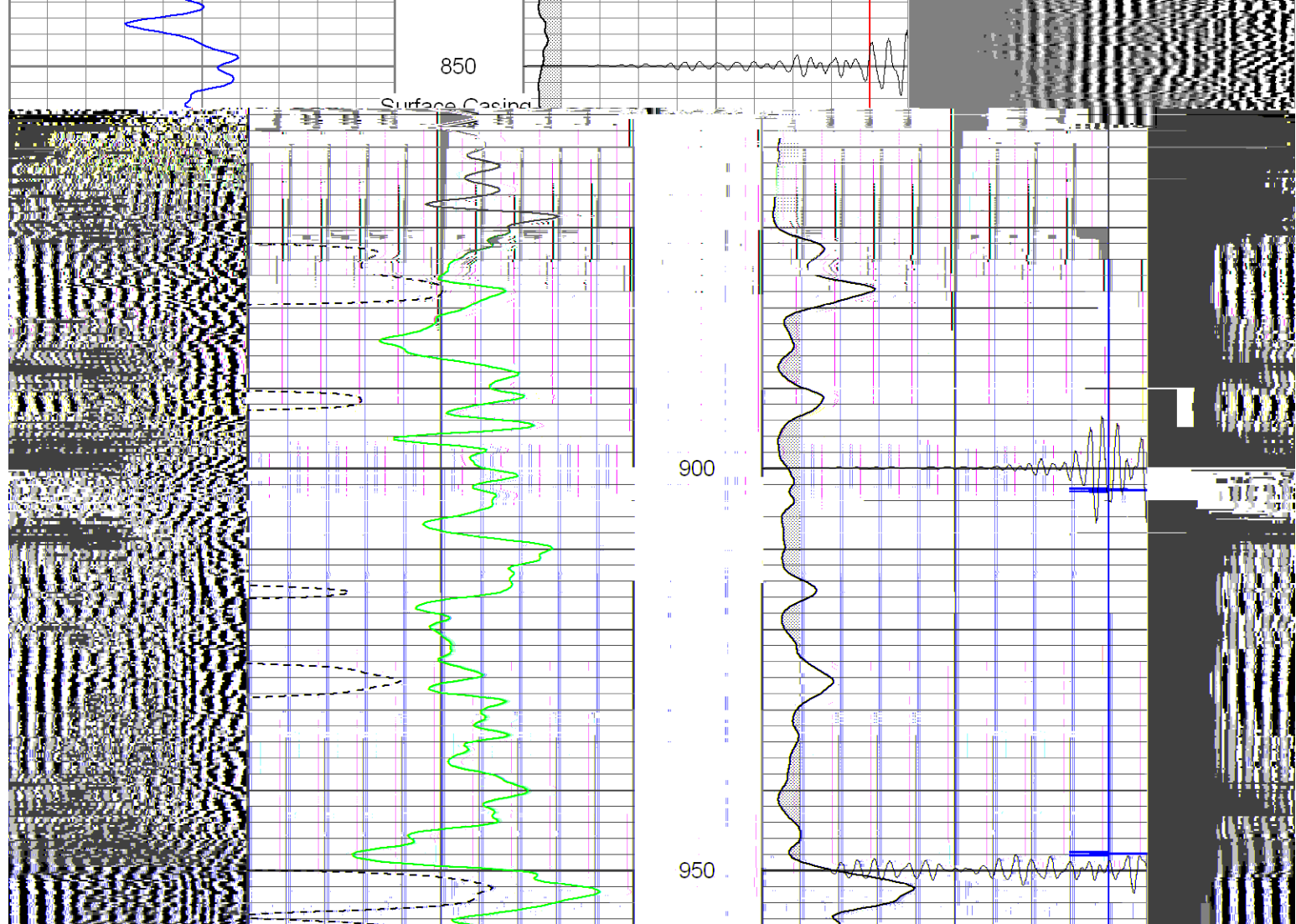




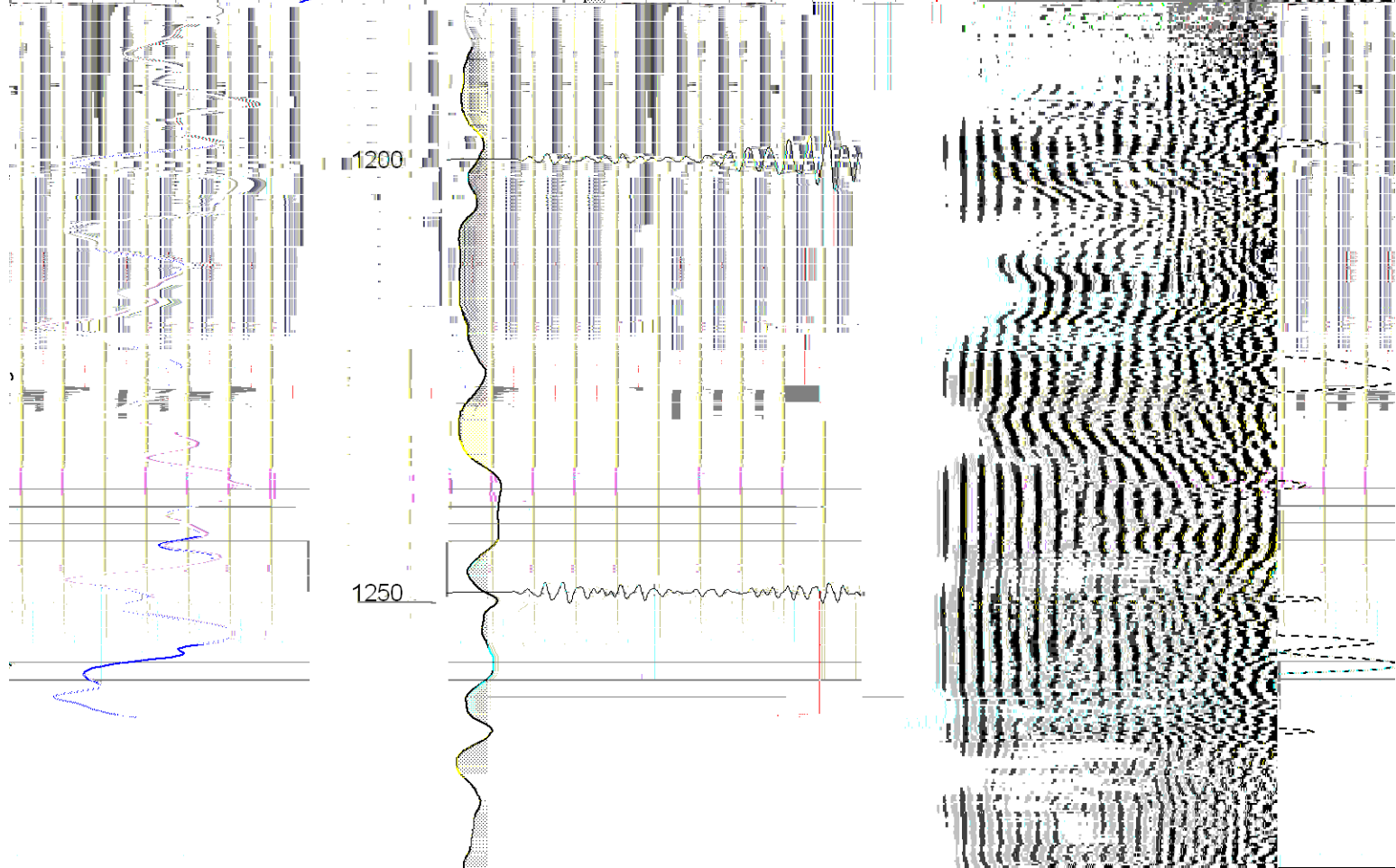
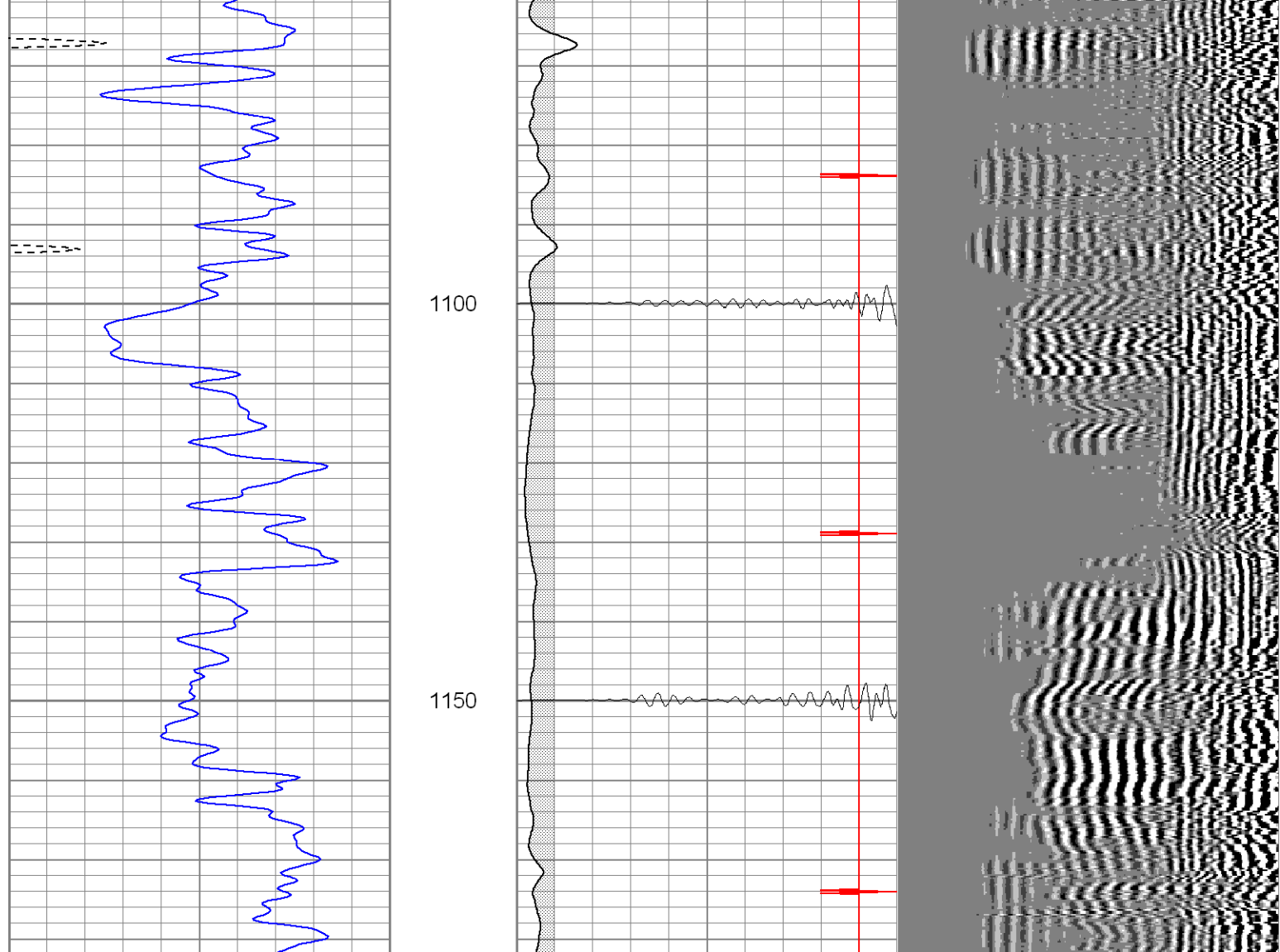
450

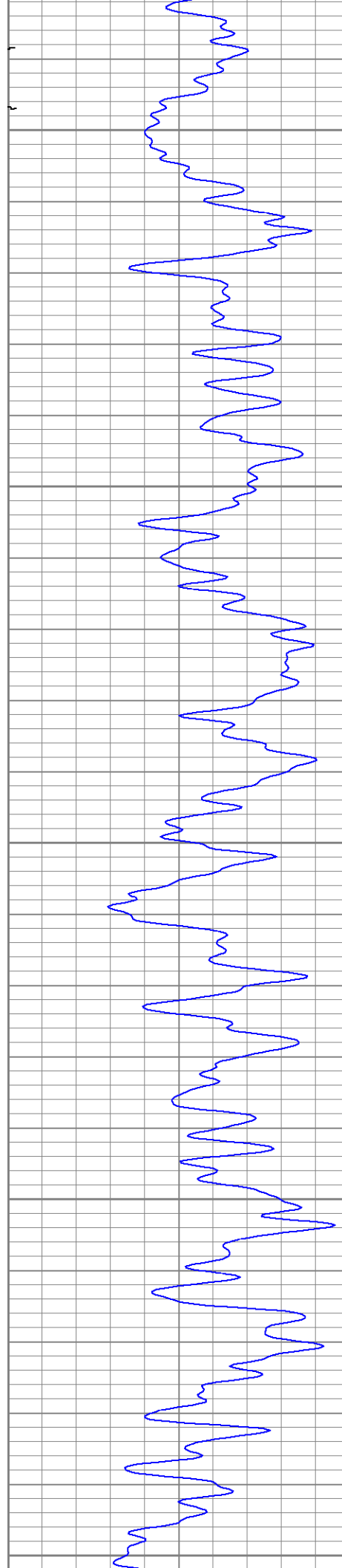












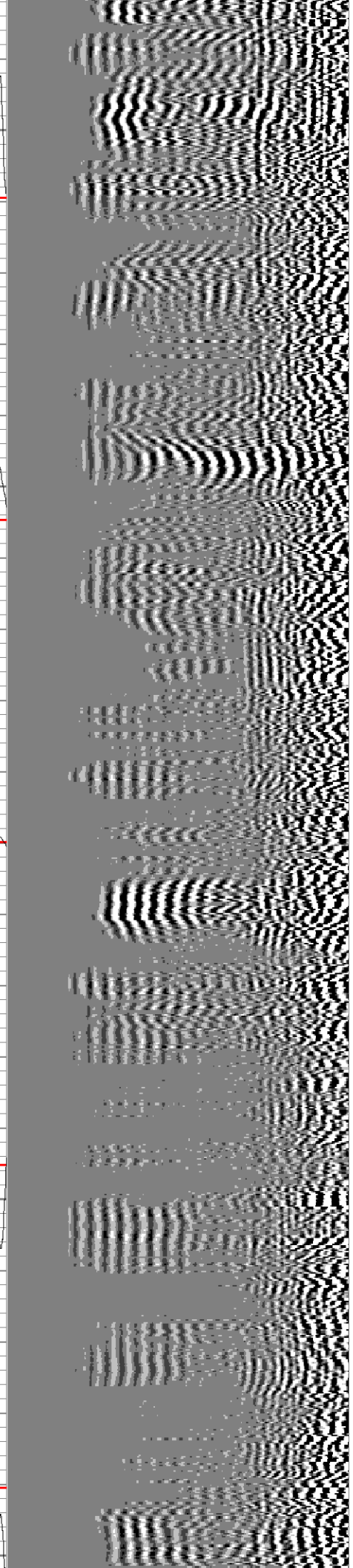
1300

1350

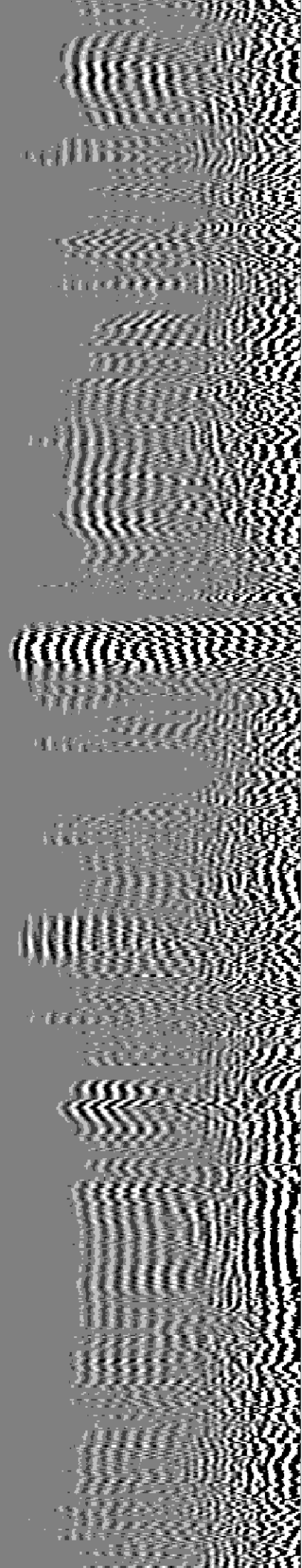
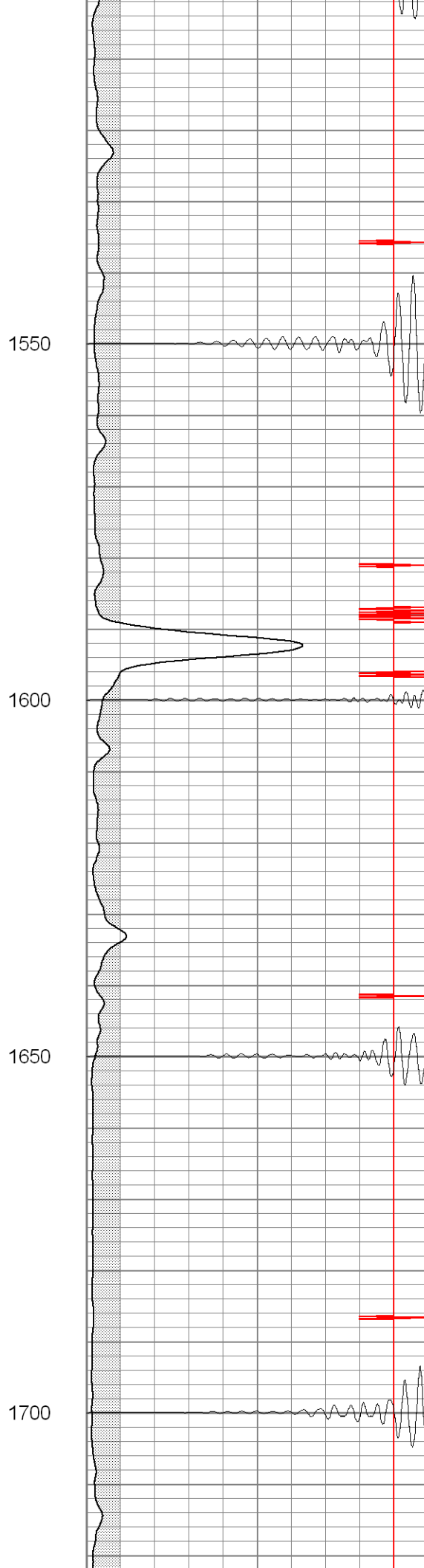
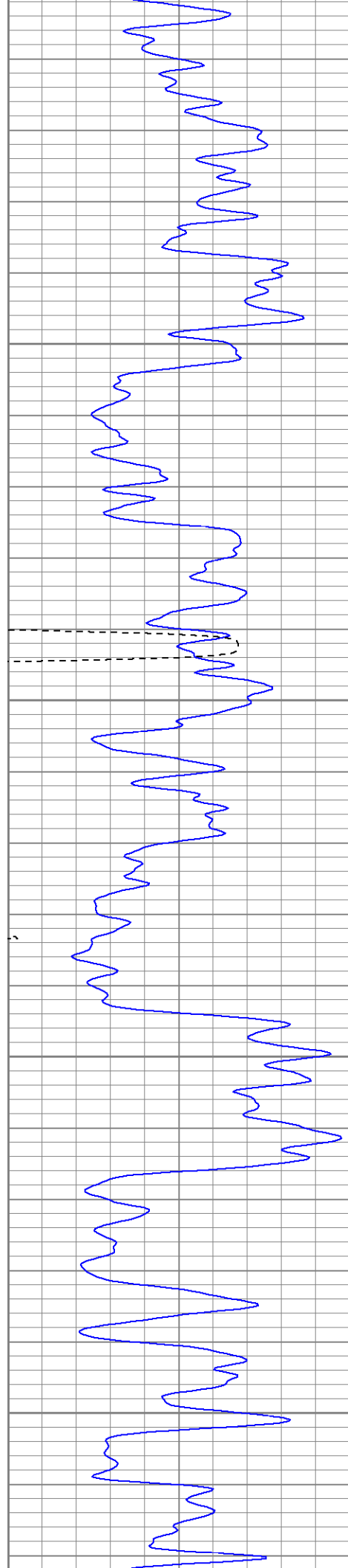
1400

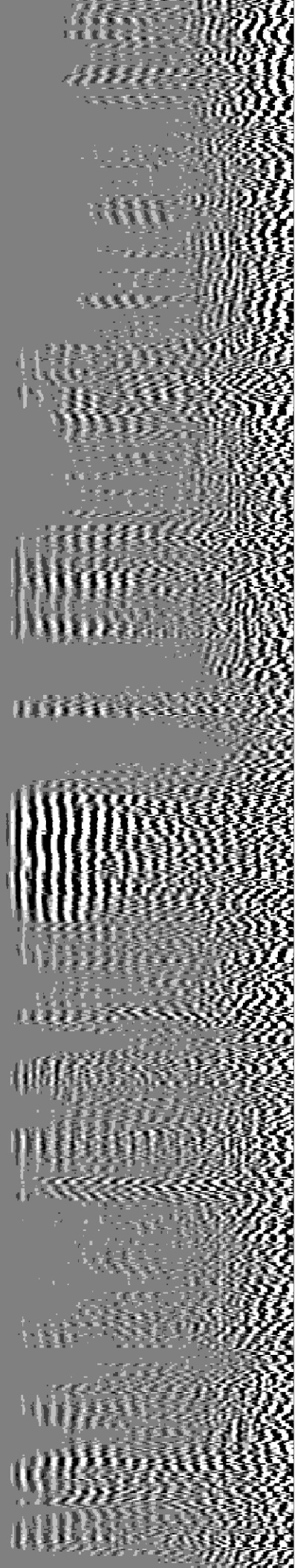
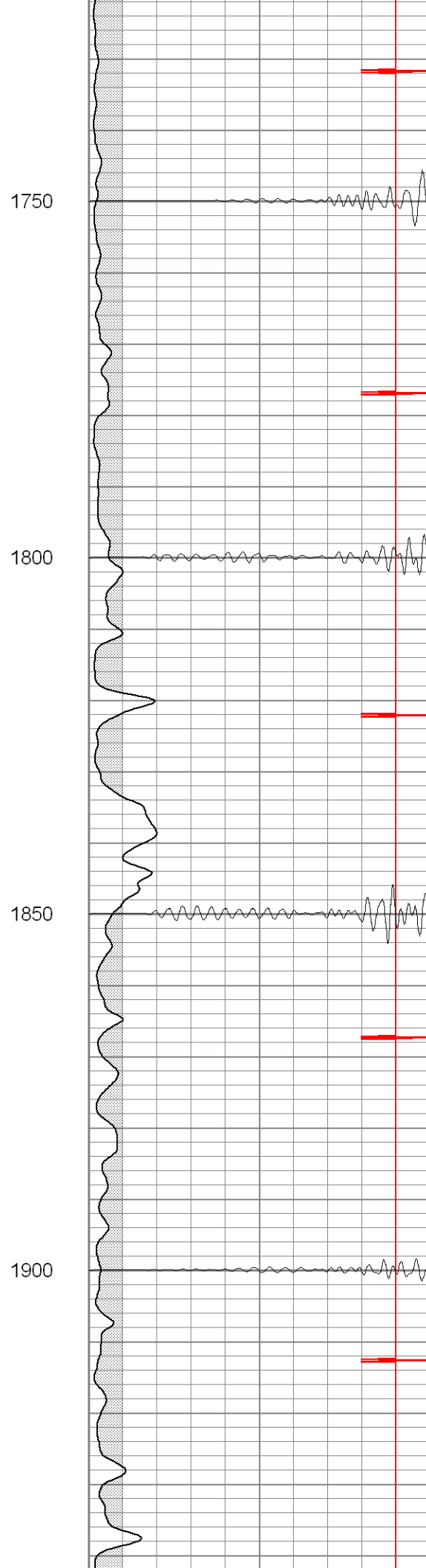
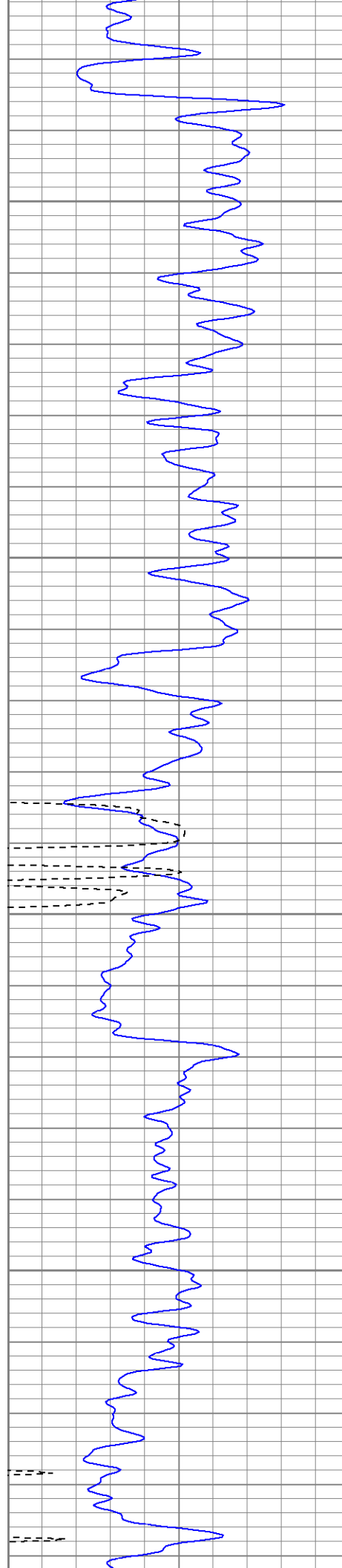
1450

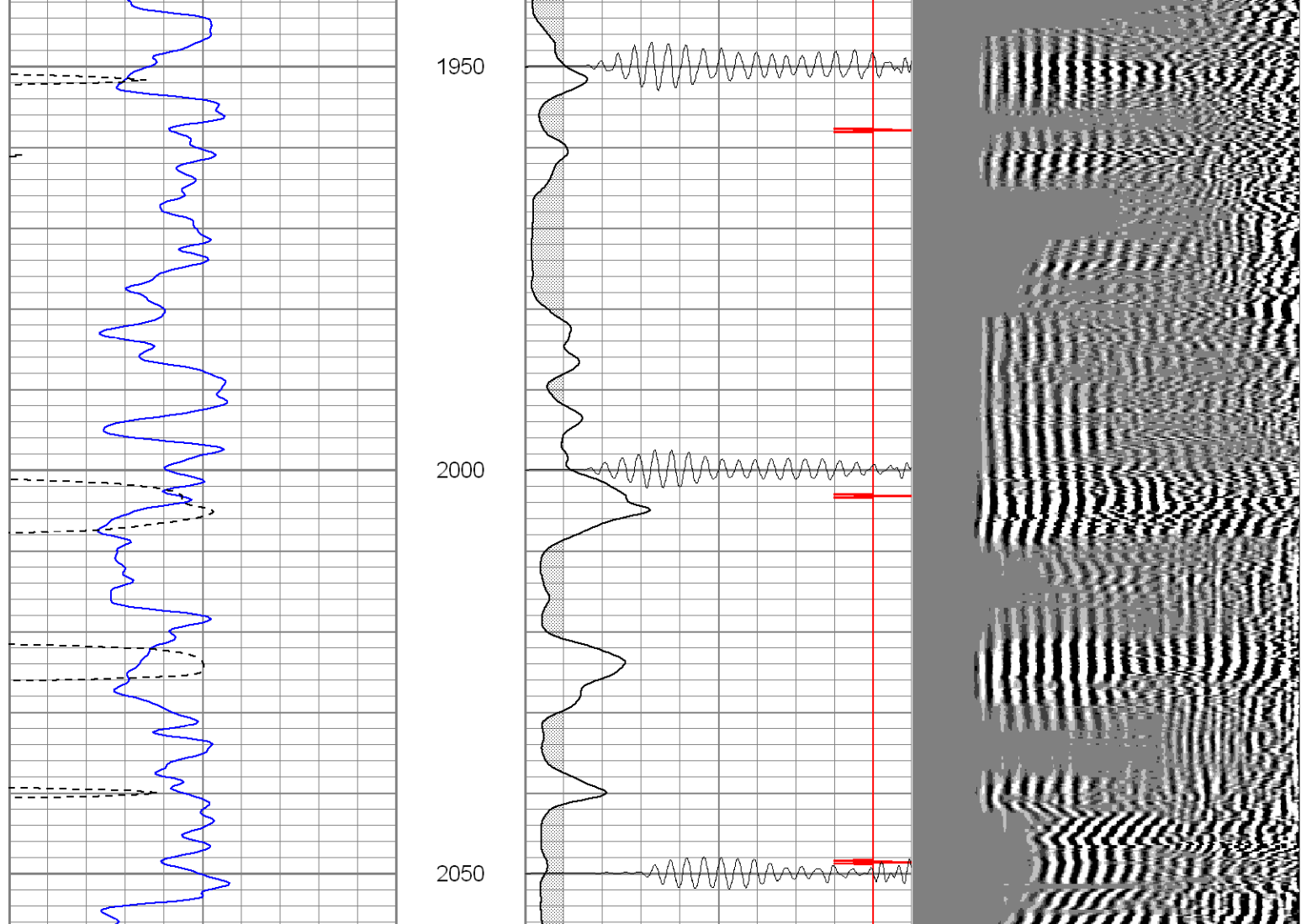
1500

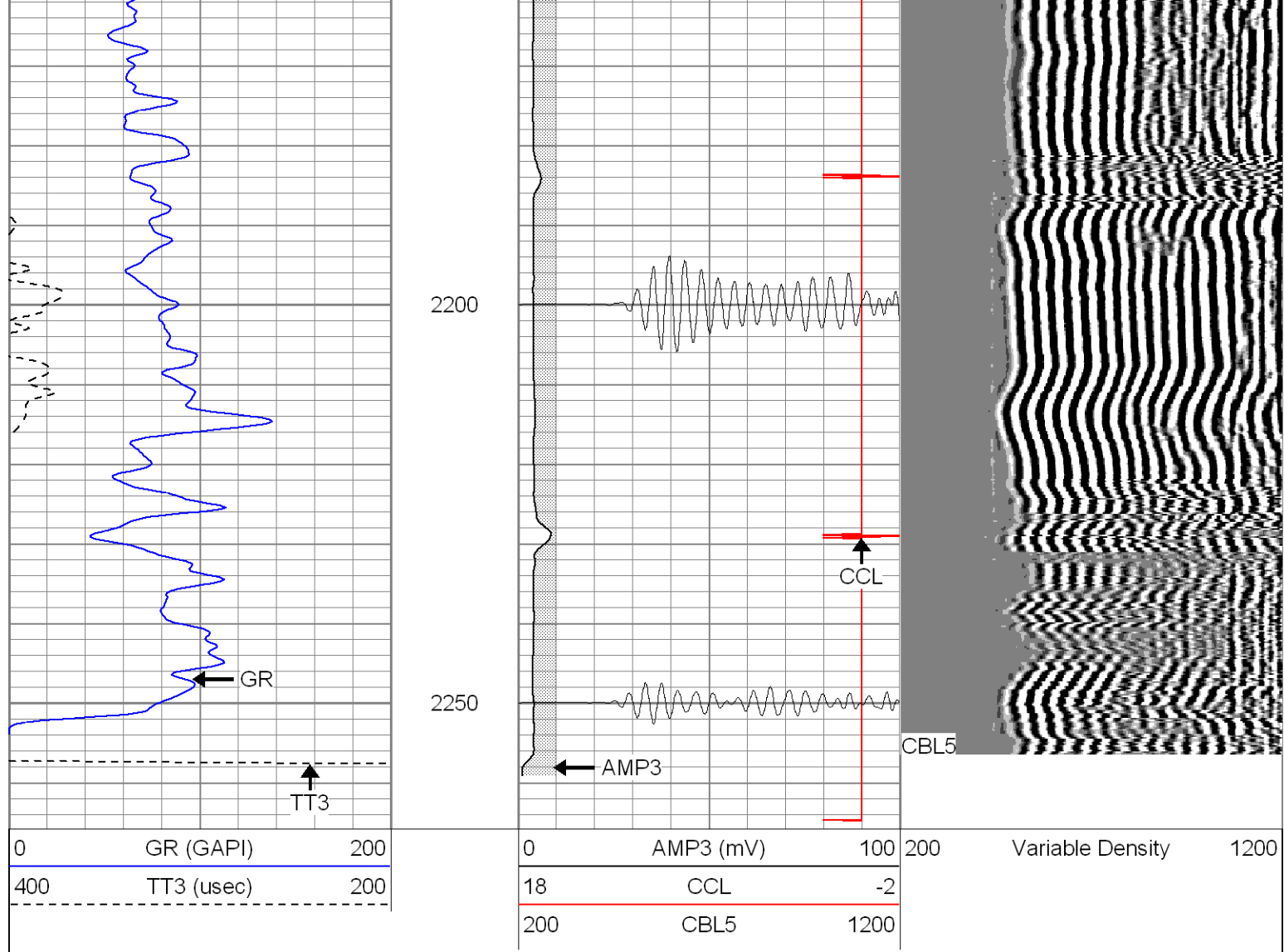






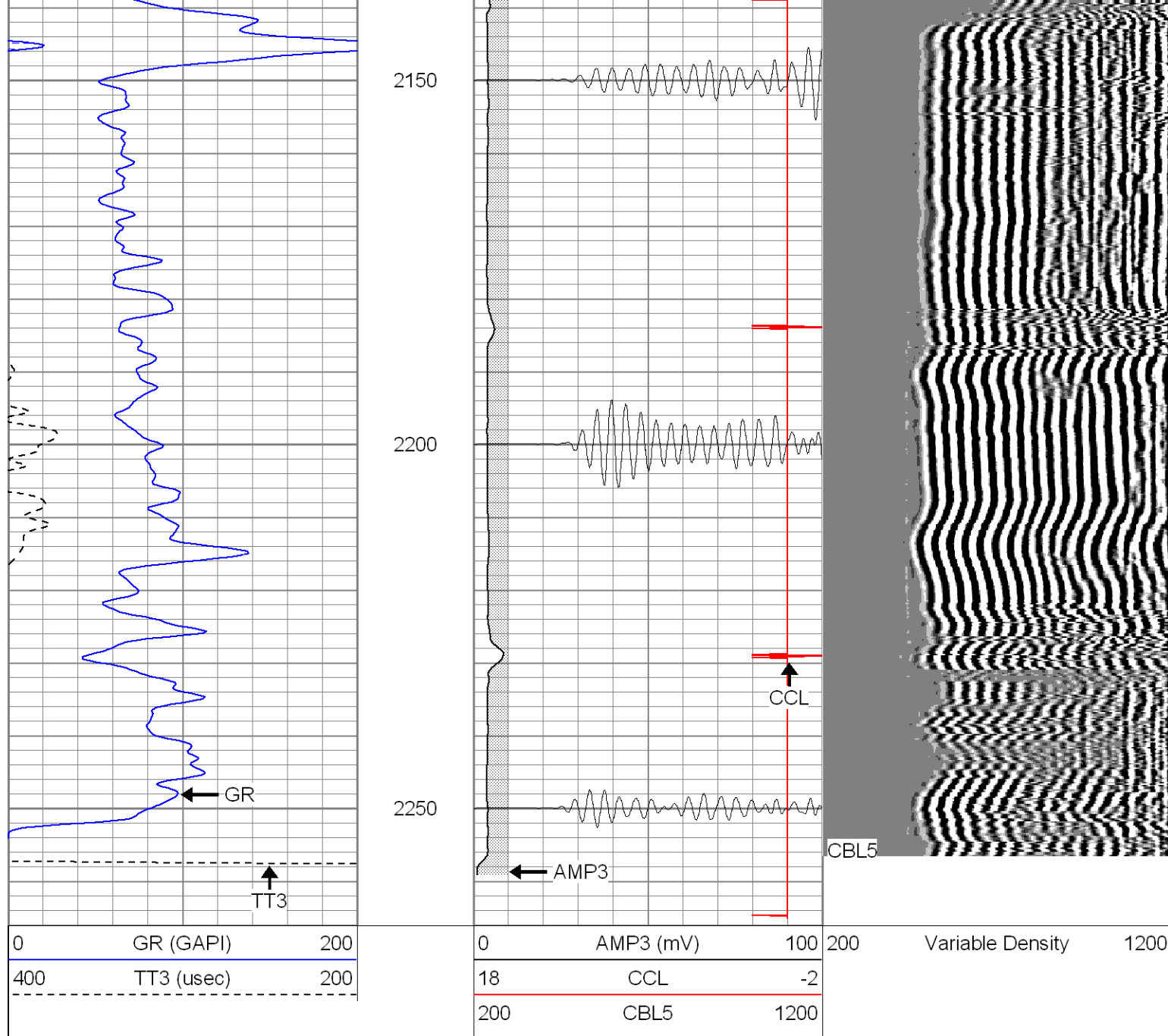






Potterton

Repeat Section



### Cement Bond Log Calibration Report

Serial Number:	Titan5		
Tool Model:	2		
Performed:	Fri May 12 17:45:29 2006		
Depth:	295.435	ft	
Casing Diameter:	5.5	in	
	3' Spacing	5' Spacing	
Signal Zero:	0	0	mV
Calibrated Amplitude:	85	85	mV
Reading at Signal Zero:	-0.02	0.00878906	V
Reading in Free Pipe:	1.5	1.4	V
Gain:	55.9211	61.0979	
Offset:	1.11842	-0.536993	

### Gamma Ray Calibration Report

Serial Number:	Titan5
----------------	--------

Serial Number:	None
Tool Model:	T2
Performed:	Wed May 10 09:56:55 2006

Calibrator Value:	1.0	GAPI
-------------------	-----	------

Background Reading:	0.0	cps
---------------------	-----	-----

Calibrator Reading:	1.0	cps
---------------------	-----	-----

Sensitivity:	1.2500	GAPI/cps
--------------	--------	----------