

GR		CCL		CBL			
Run No.	ONE	Run No.	ONE	Run No.	ONE	Run No.	
Serial No.	400	Serial No.	400	Serial No.	400	Serial No.	
Model No.	CBL_DC	Model No.	CBL_DC	Model No.	CBL_DC	Model No.	
Diameter	3.25"	Diameter	3.25"	Diameter	3.25"	Diameter	

LOGGING DATA

General Data

Pass	Depths		Well Head	Speed	Logging Run Comments
No.	From	To	Pressure	Ft/Min	
ONE	7003'	2900'	0 PSI	60	MAIN LOG SECTION

Pass	GR		CCL		AMPLITUDE			
	Scale		Scale		Scale		Scale	
No.	L	R	L	R	L	R	L	L
ONE	0	200	-9	1	0	100		

DIRECTIONAL INFORMATION

Maximum Deviation		deg. @		KOP		

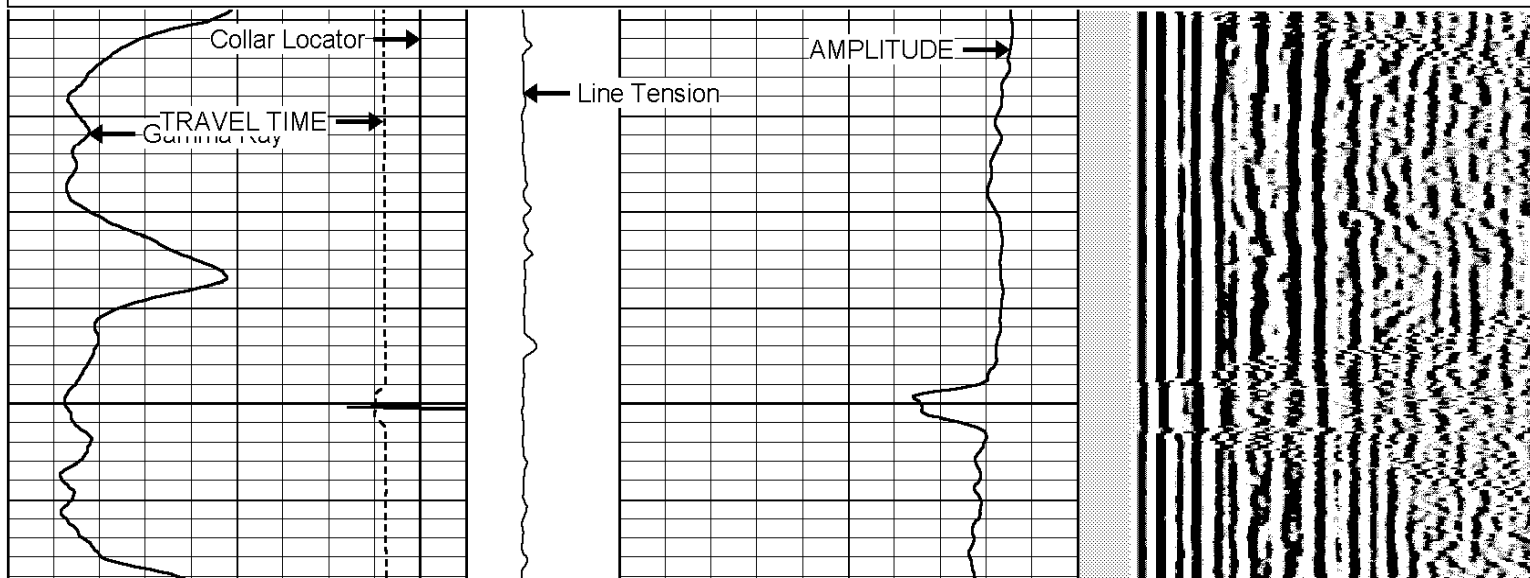
HALLIBURTON

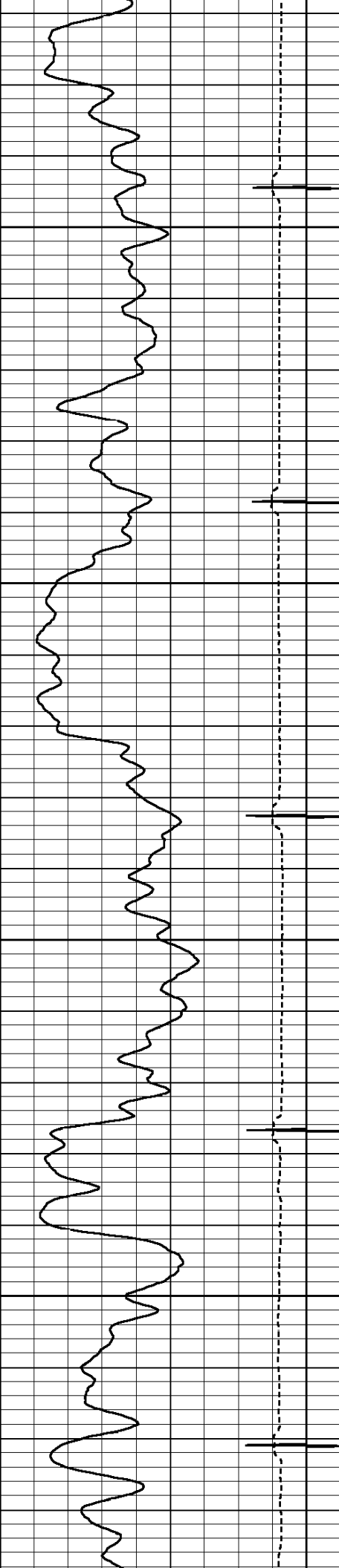
ACOUSTIC CEMENT BOND LOG

MAIN LOG SECTION
5"=100'

Database File: scott_34a_25_692_cbl.db
 Dataset Pathname: CBL/F_CBL
 Presentation Format: cbl_main
 Dataset Creation: Mon Feb 25 04:37:27 2008
 Charted by: Depth in Feet scaled 1:240

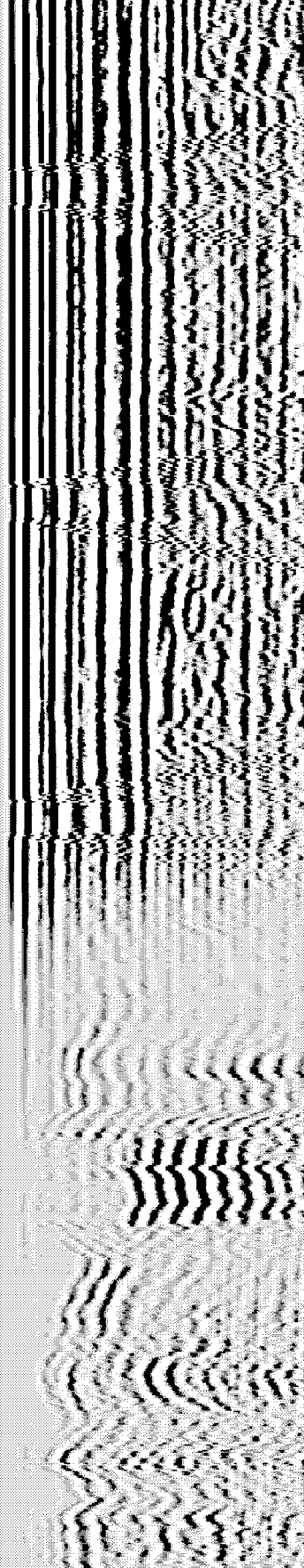
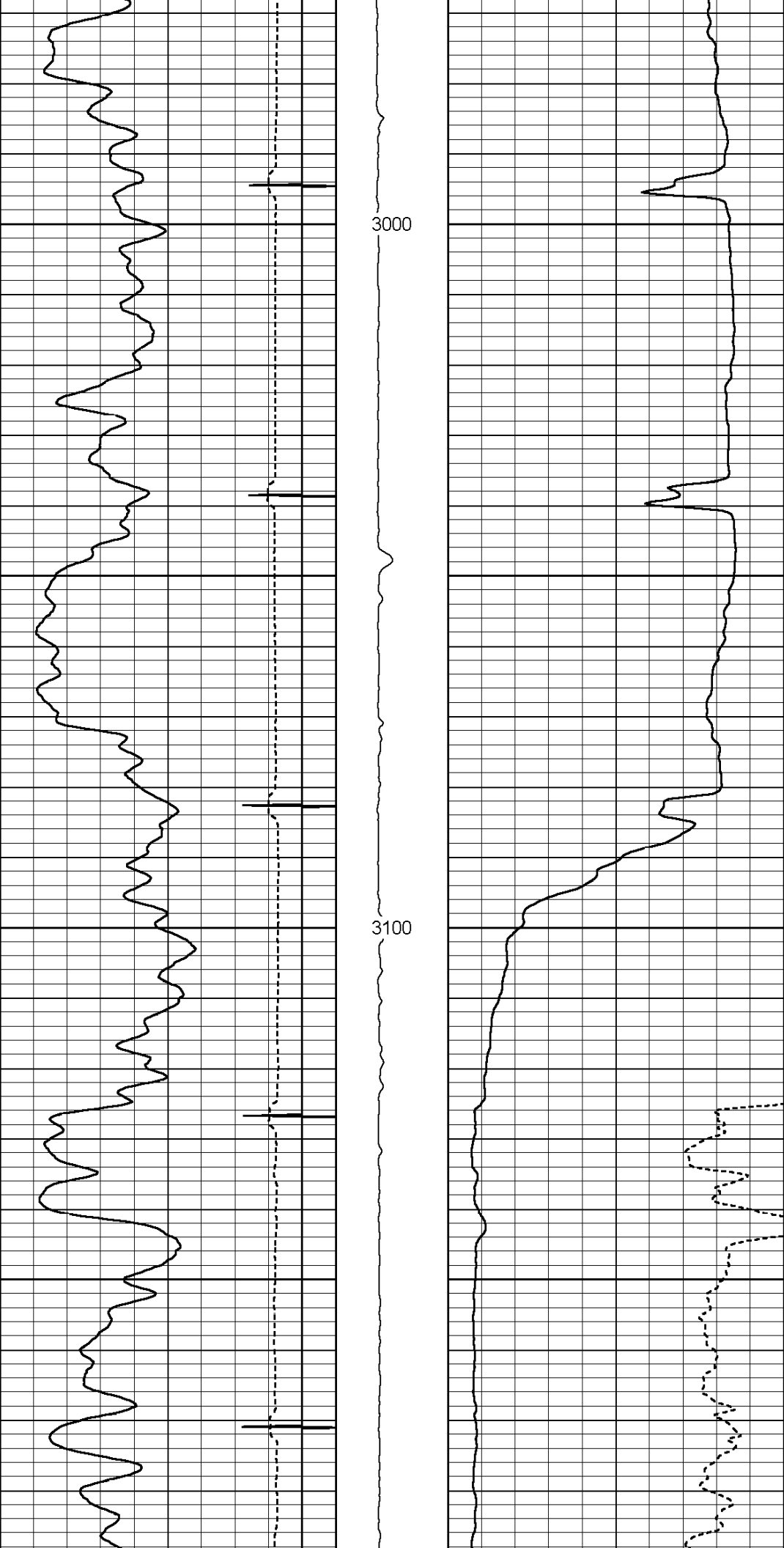
370	TRAVEL TIME (usec)	170	TENSION	0	AMP AMPLITUDE (mV)	10	200	MSG	1200
9	Collar Locator	-1	(lb)1500	0	AMPLITUDE (mV)	100			
0	Gamma Ray (GAPI)	200							

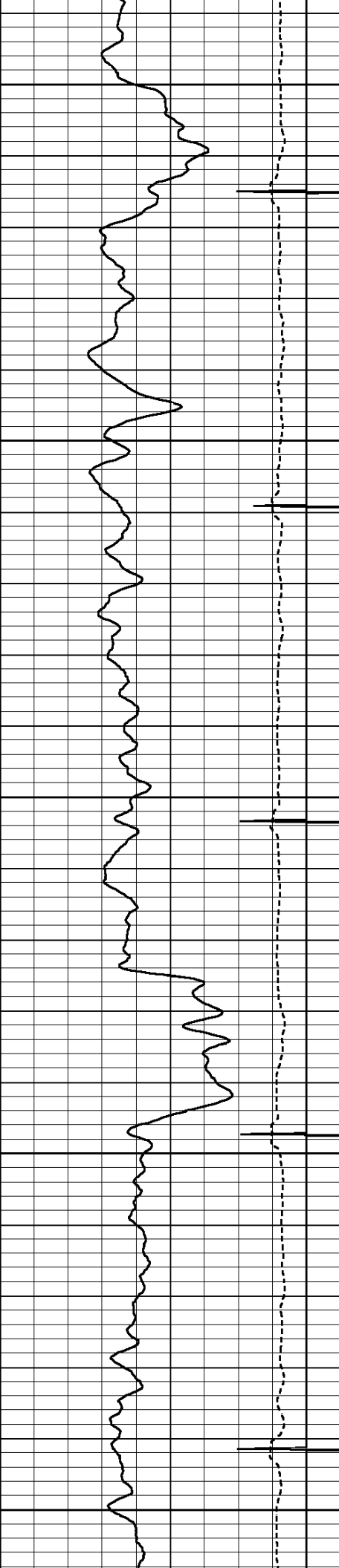




3000

3100

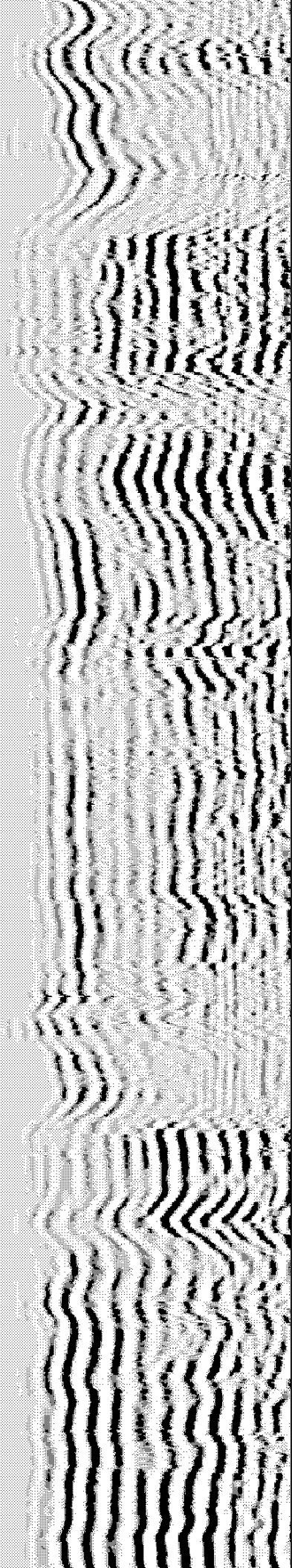
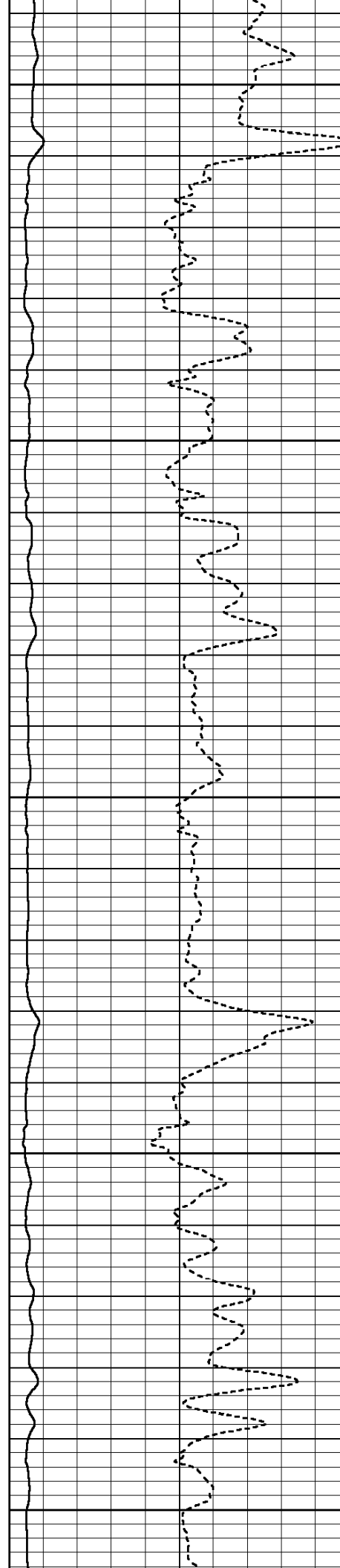


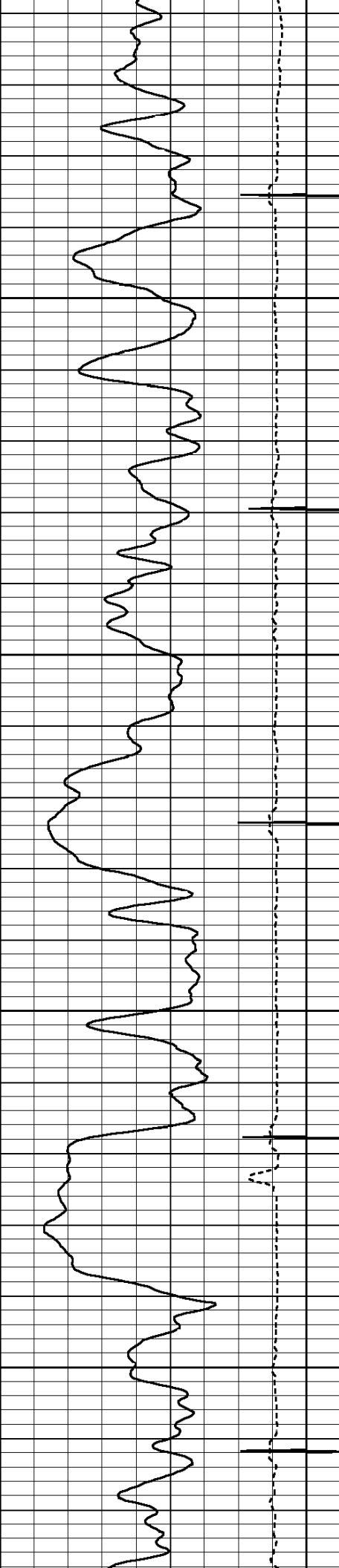


3200

3300

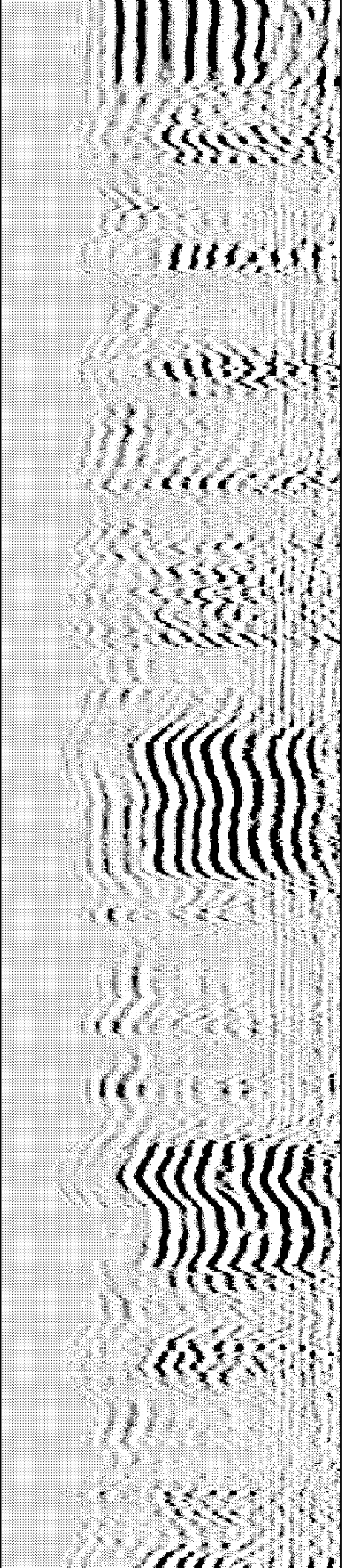
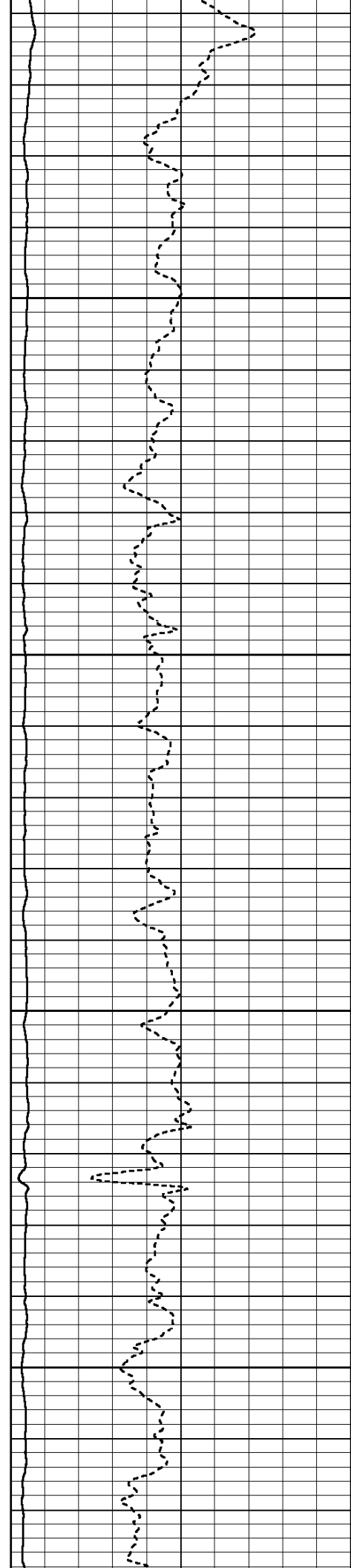
3400

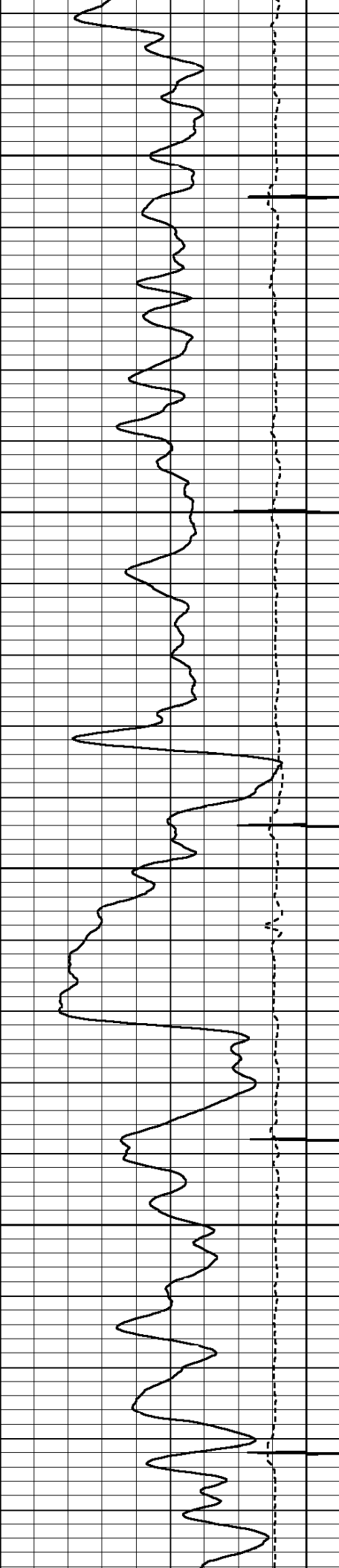




3500

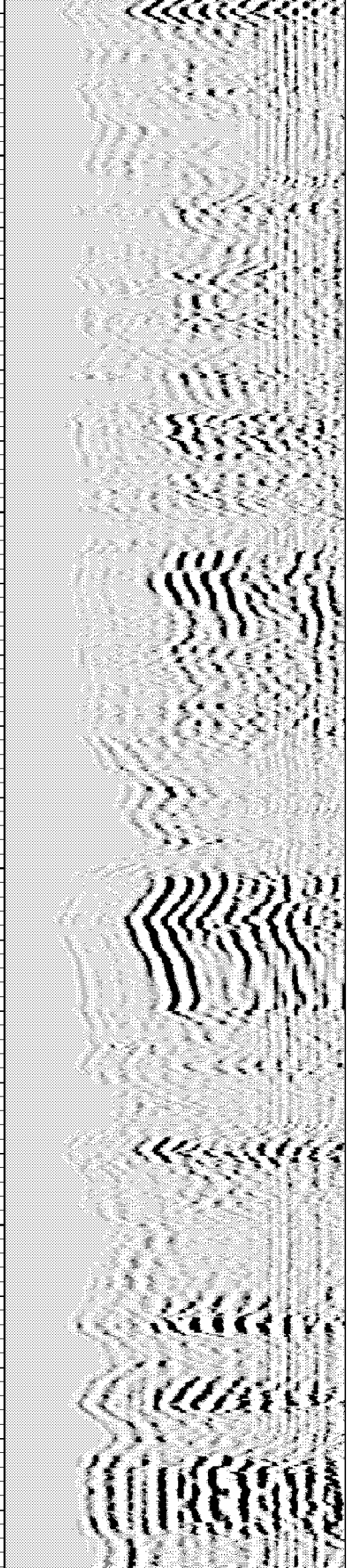
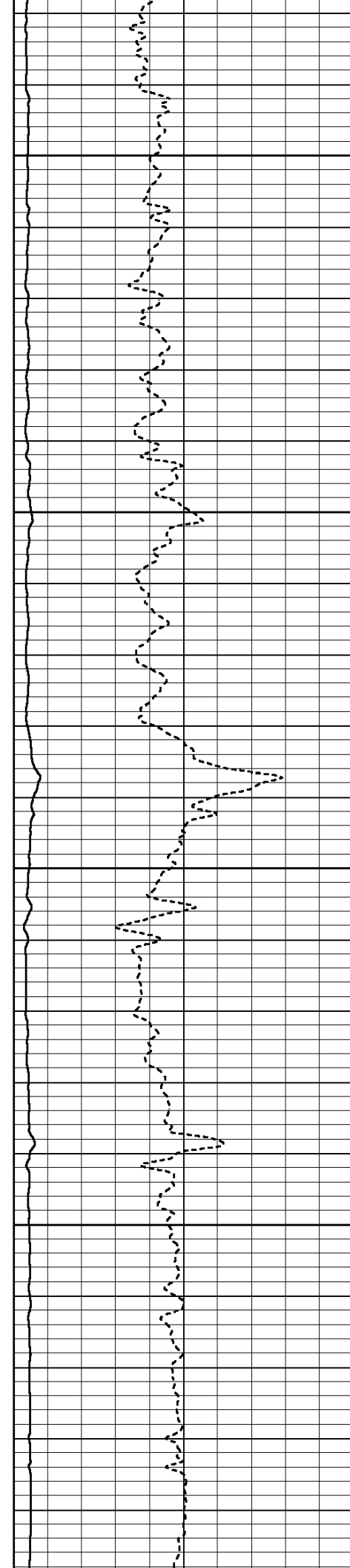
3600





3700

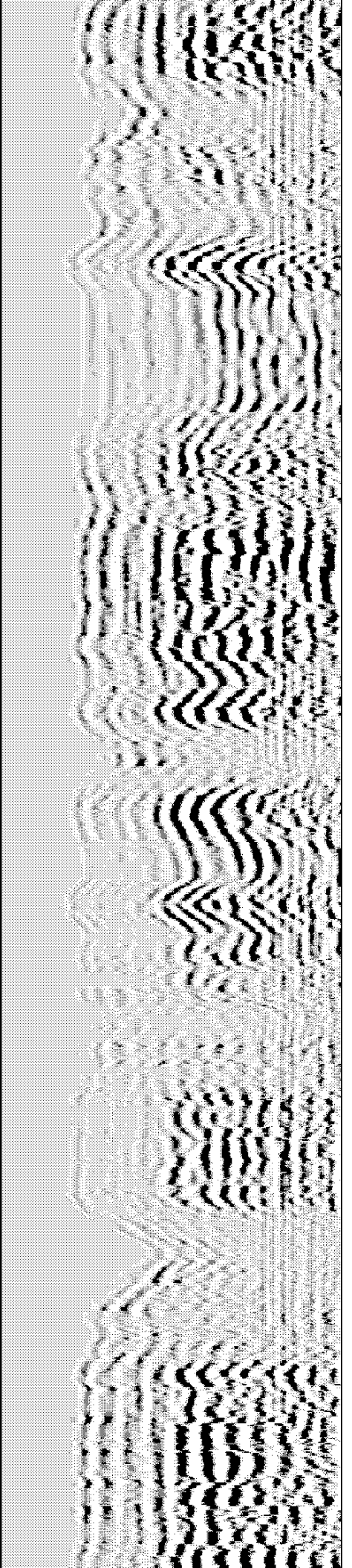
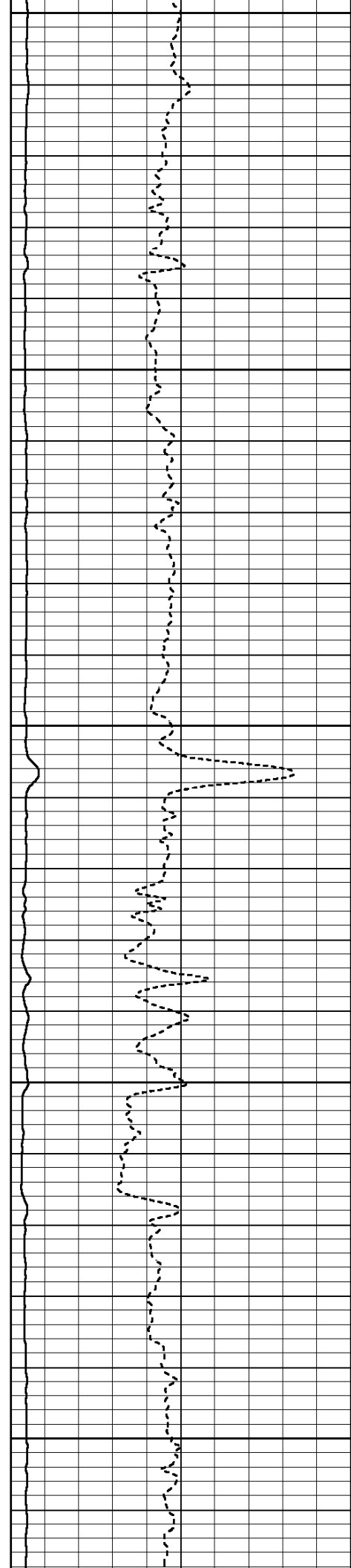
3800

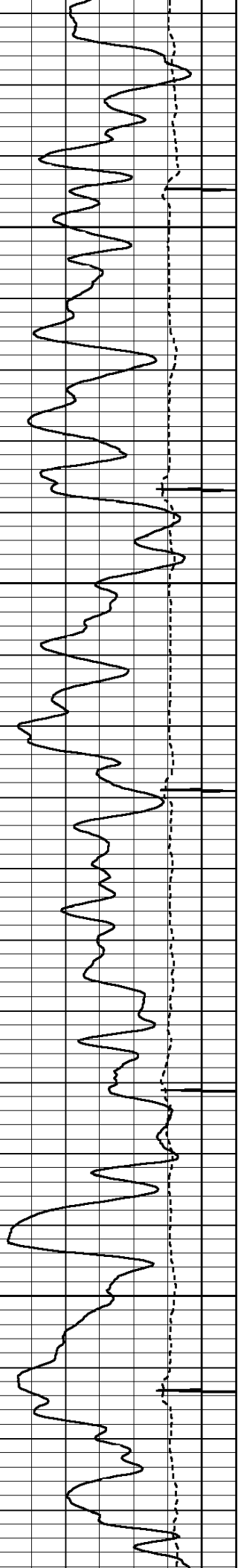




3900

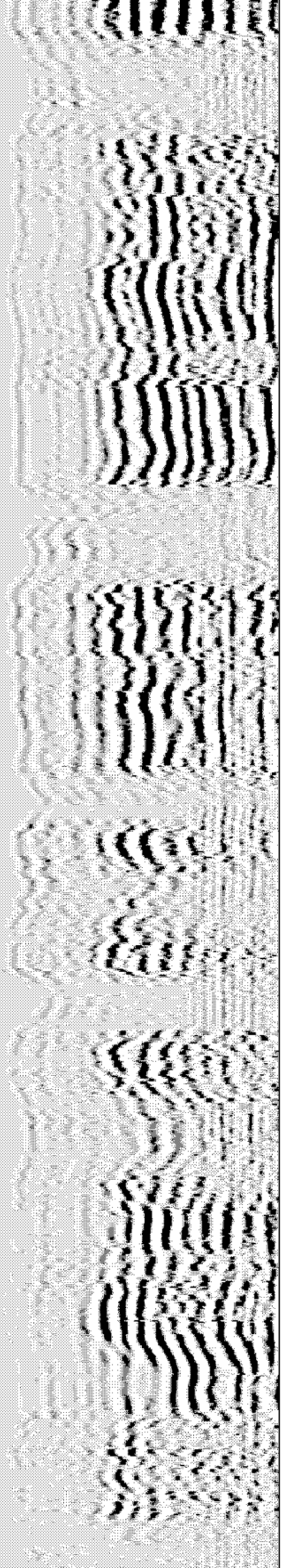
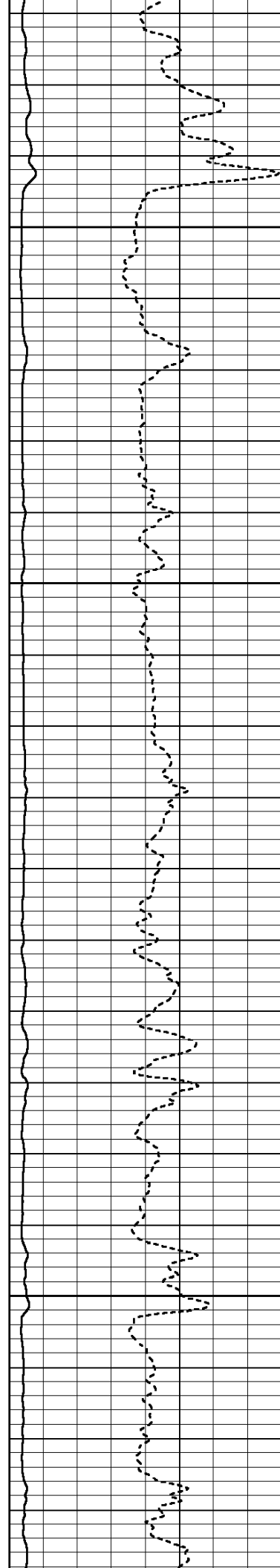
4000

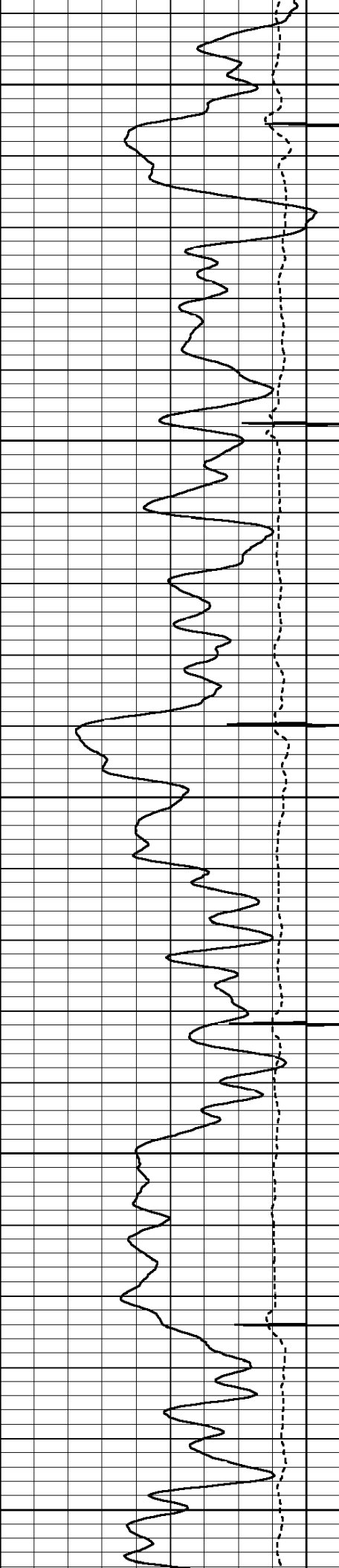




4100

4200

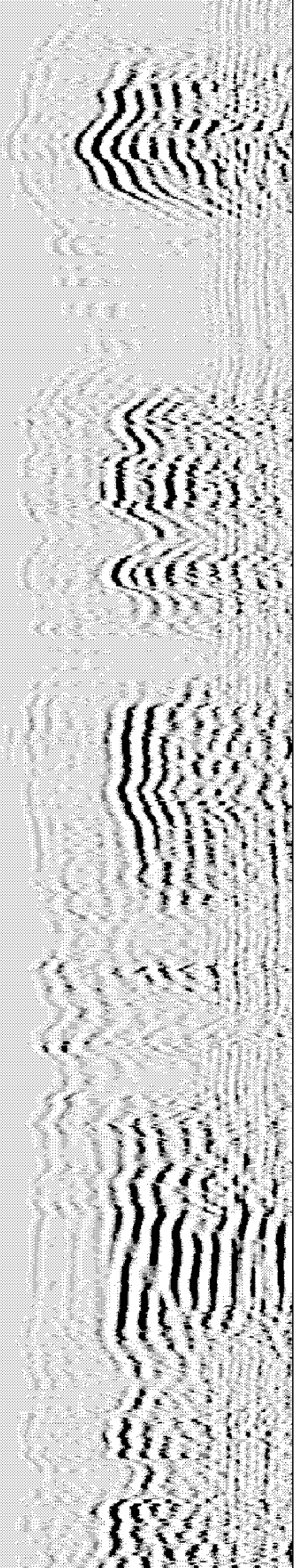
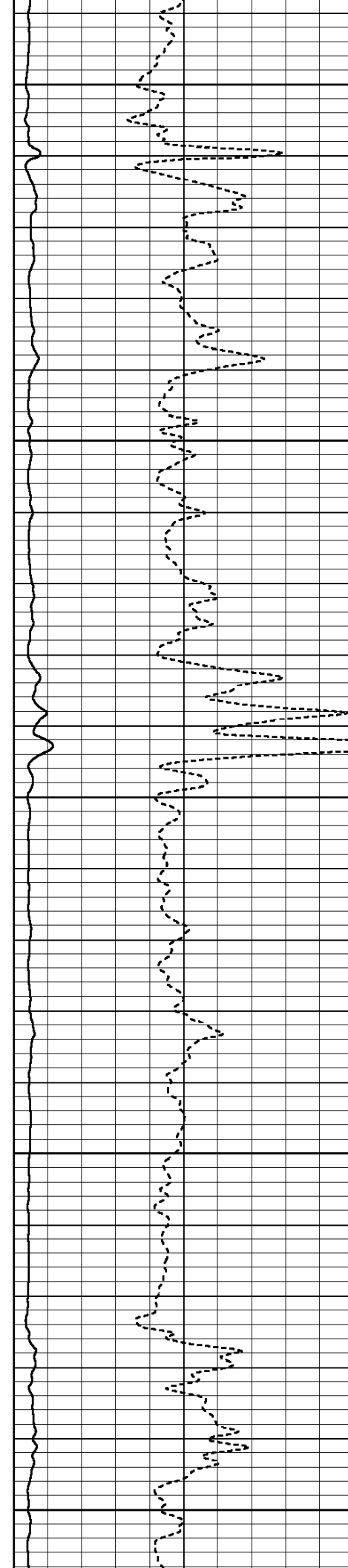


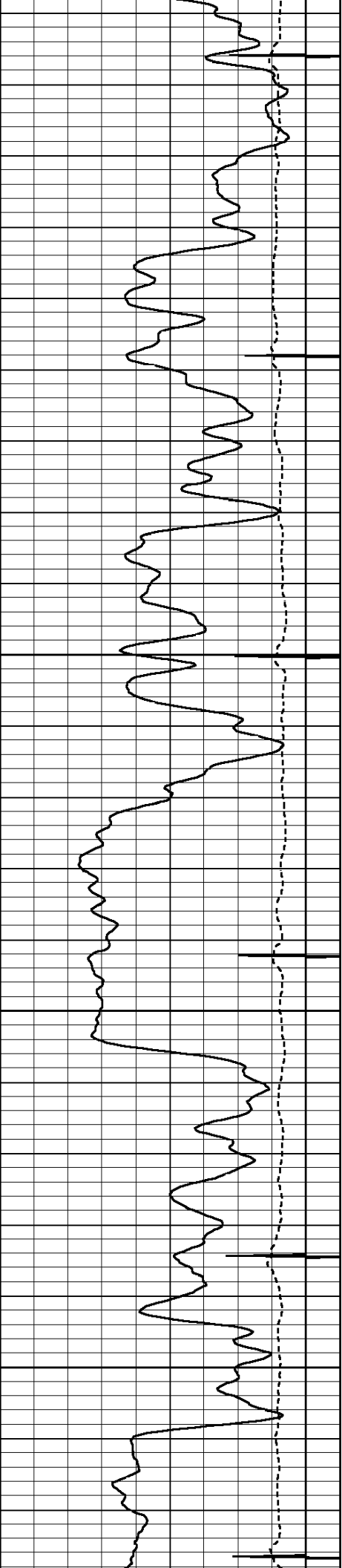


4300

4400

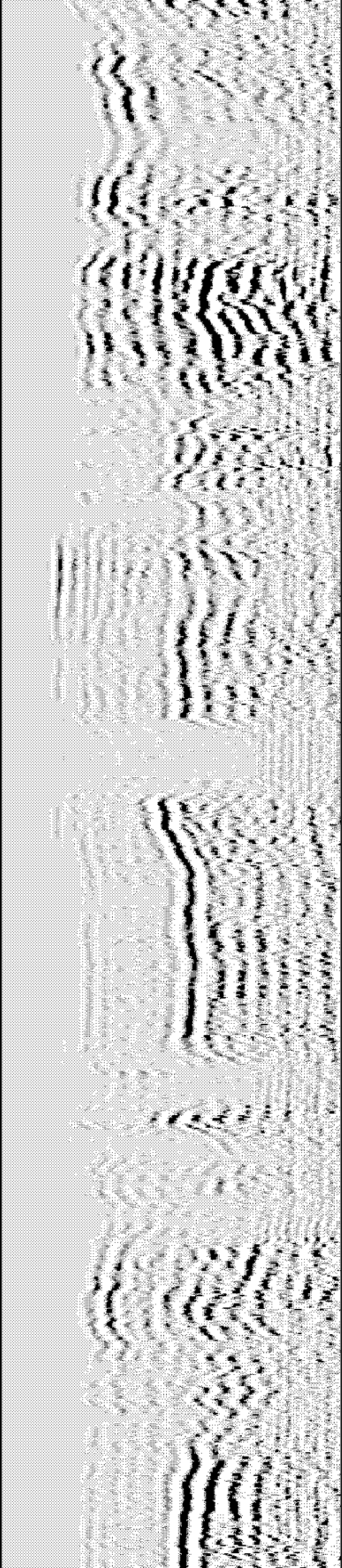
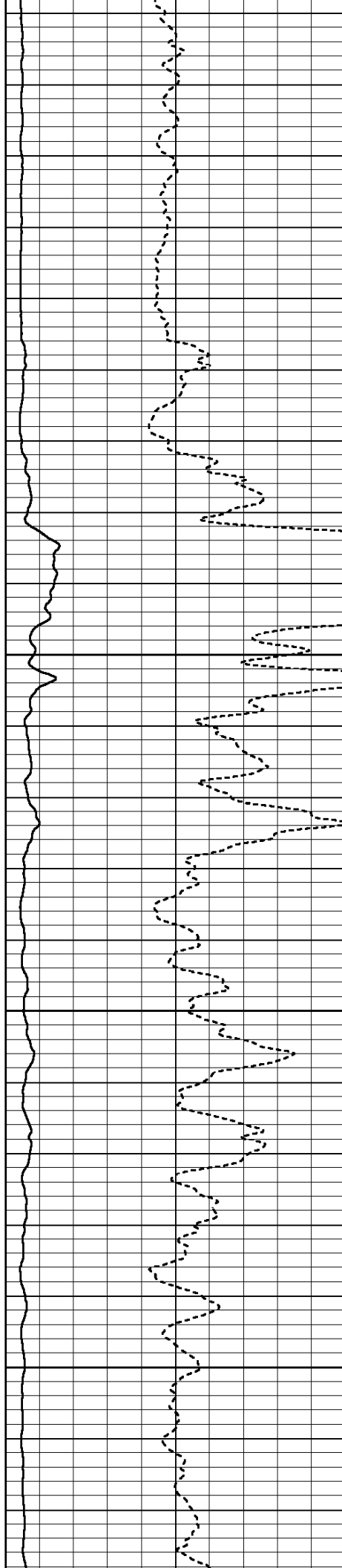
4500

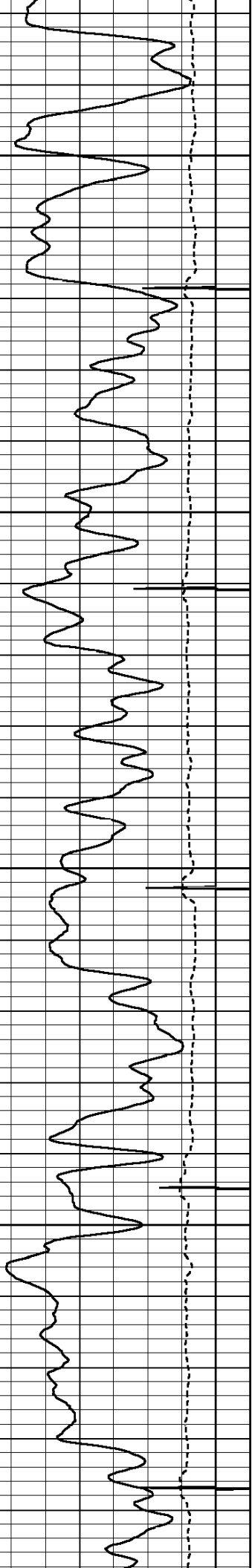




4600

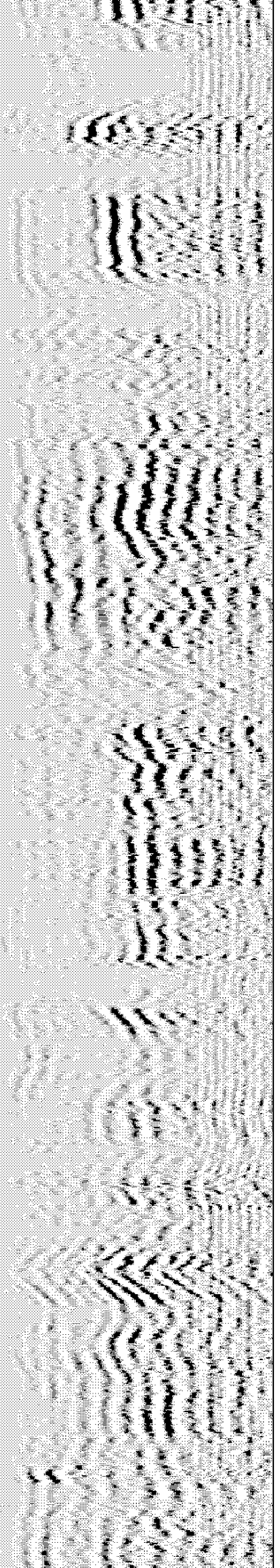
4700

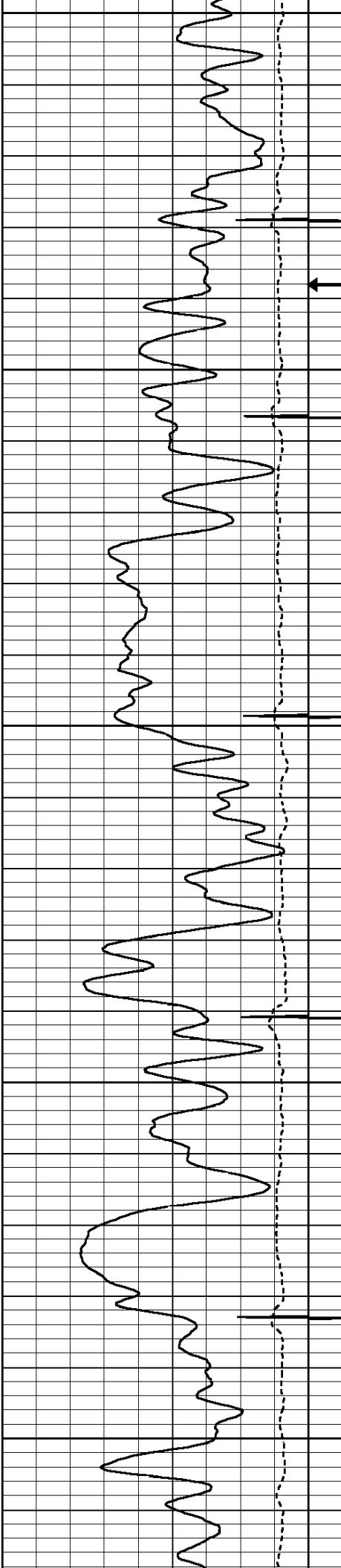




4800

4900

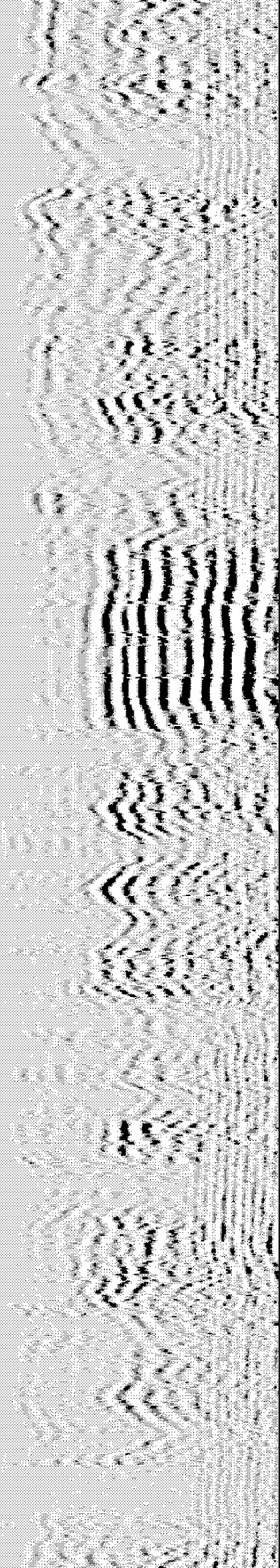
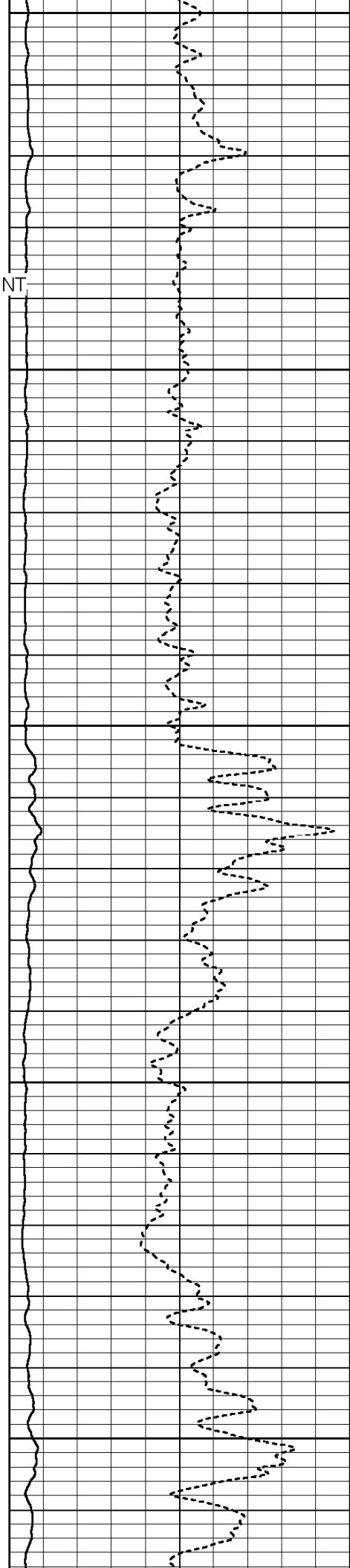


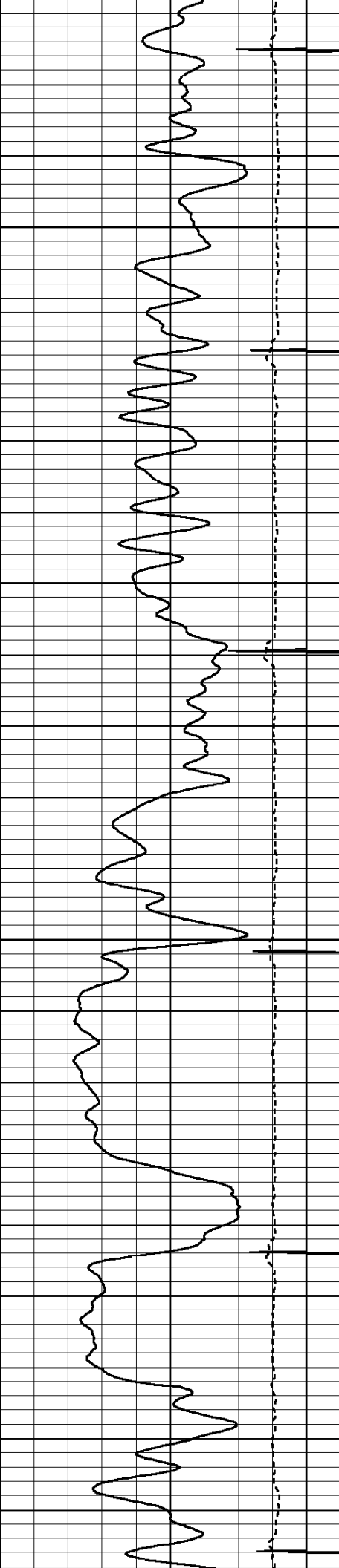


← SHORT JOINT

5000

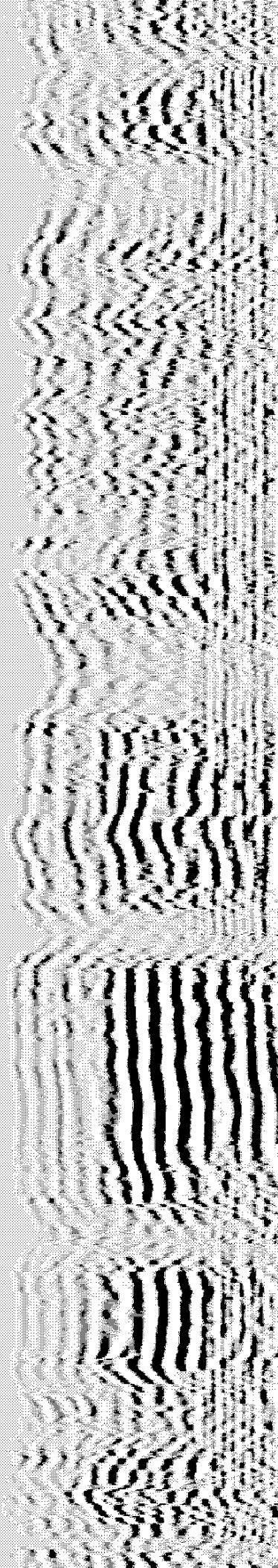
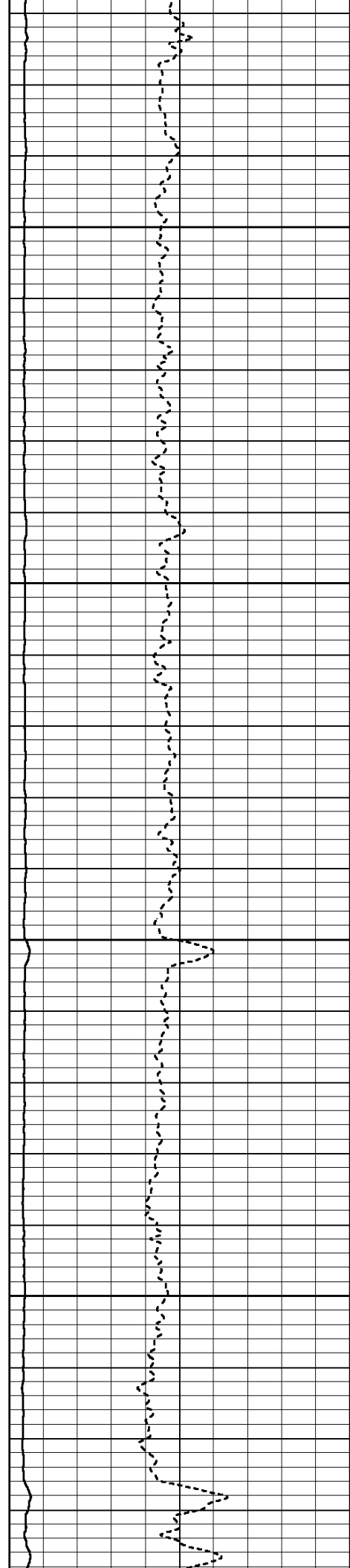
5100

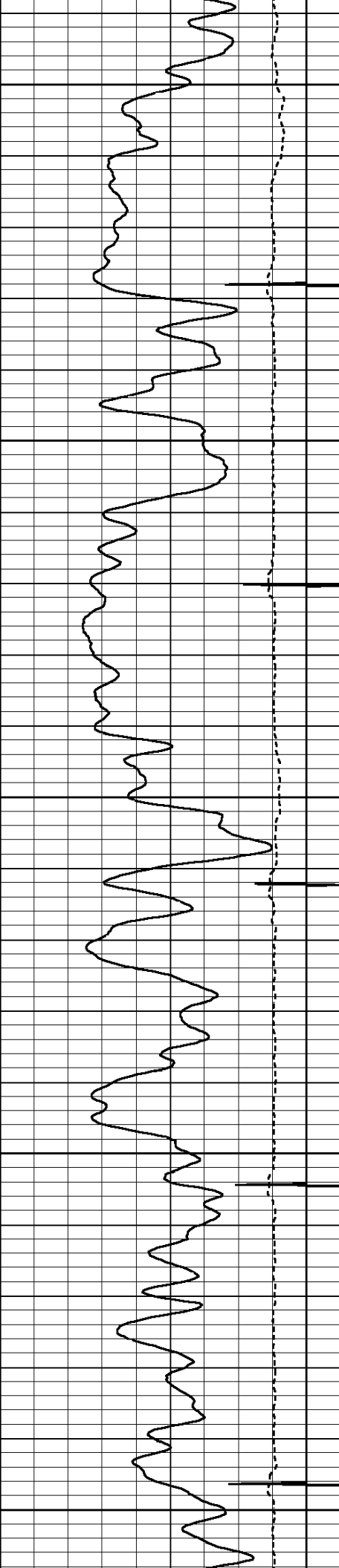




5200

5300

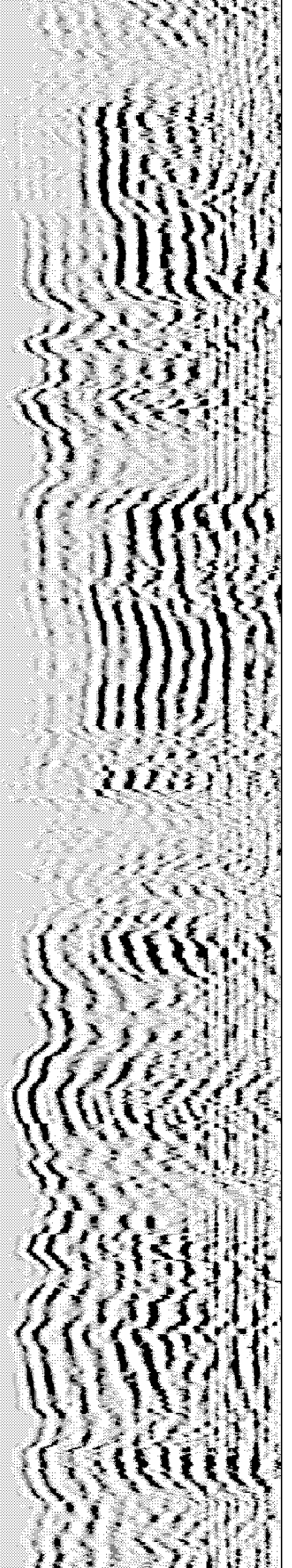
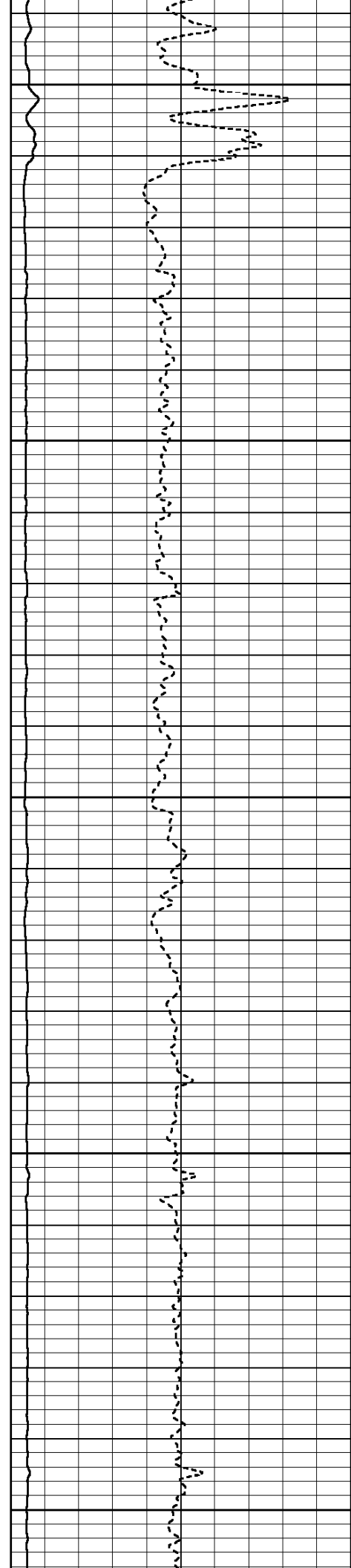


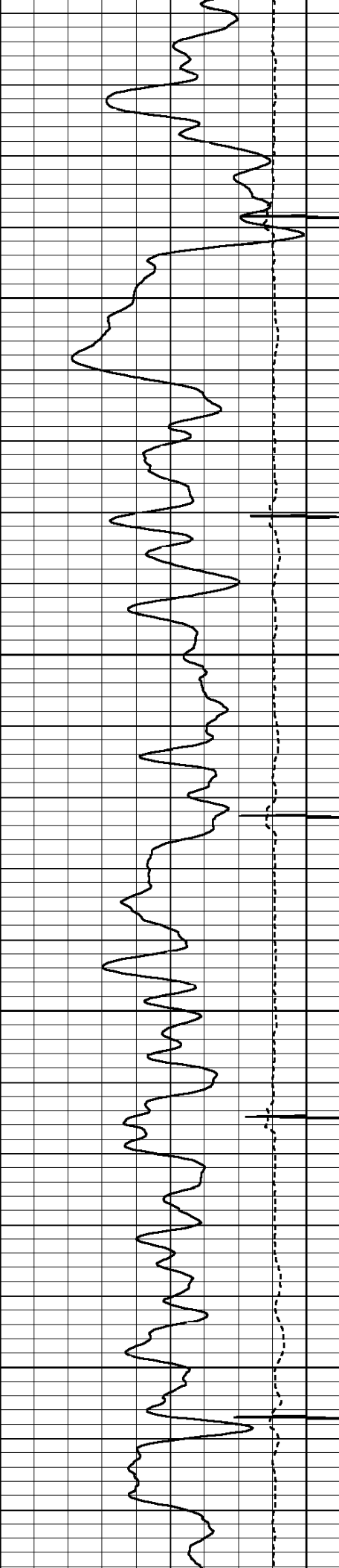


5400

5500

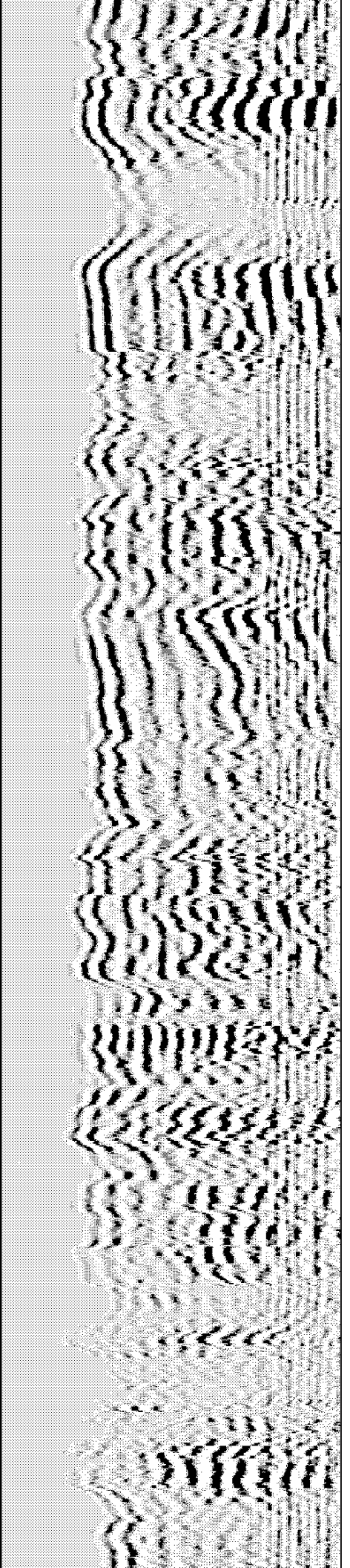
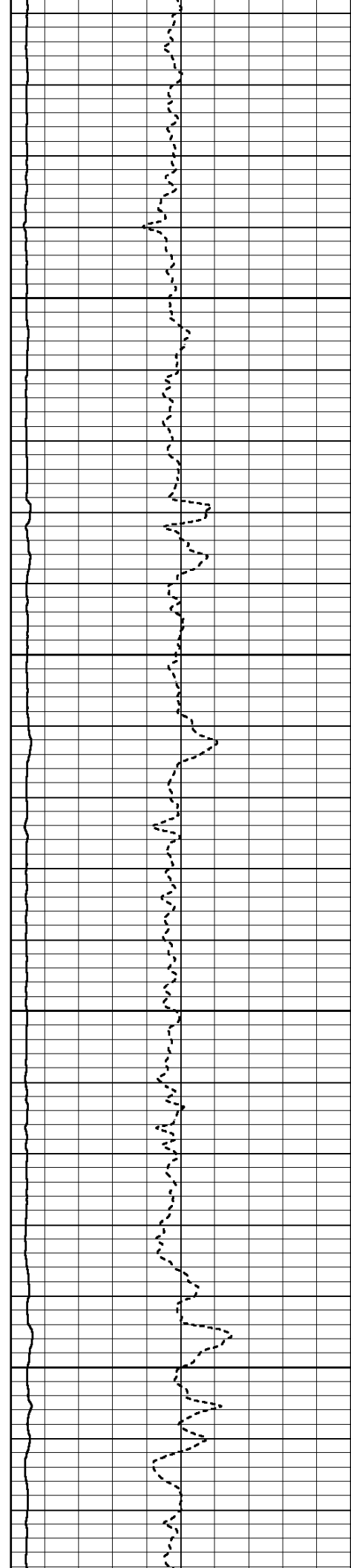
5600

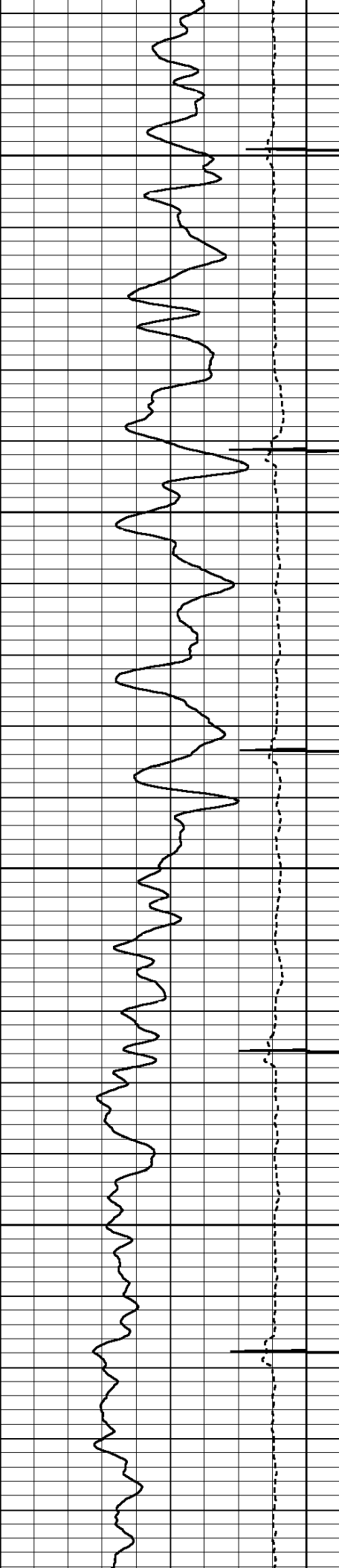




5700

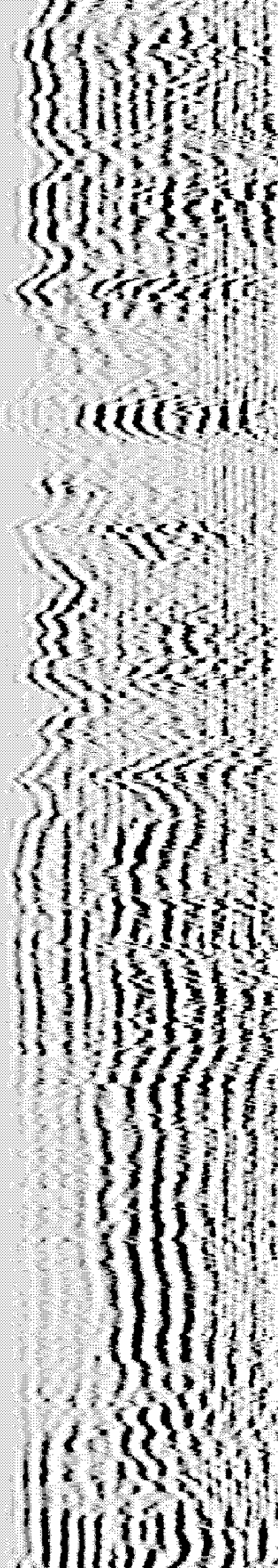
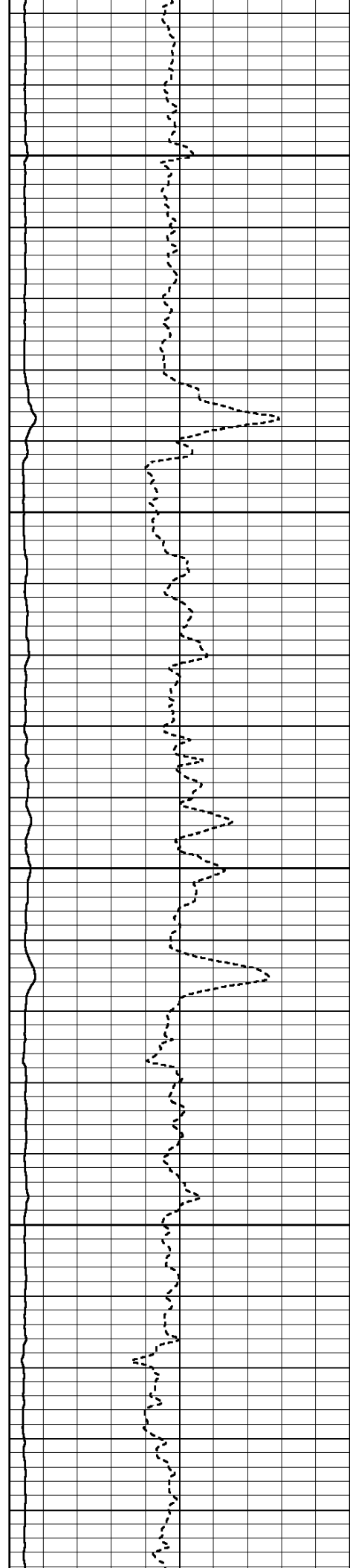
5800

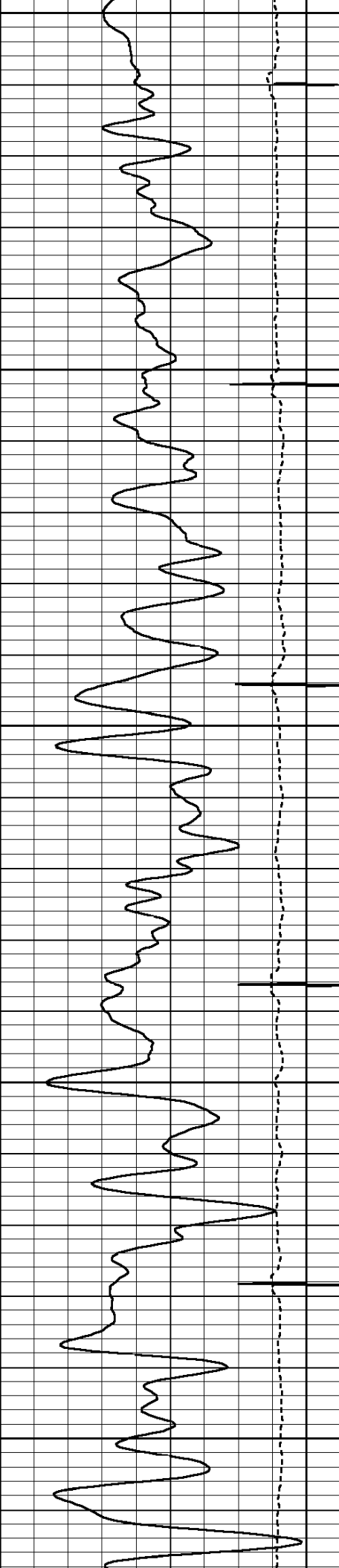




5900

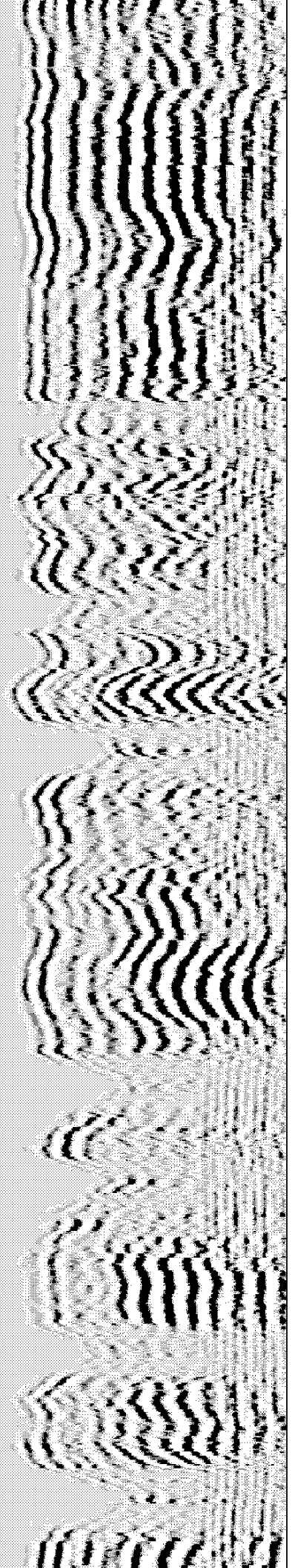
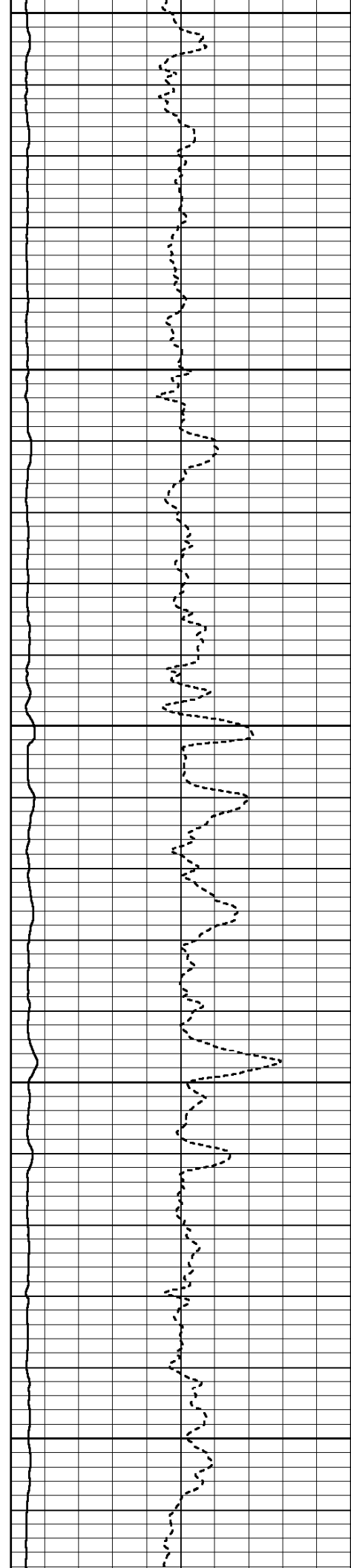
6000

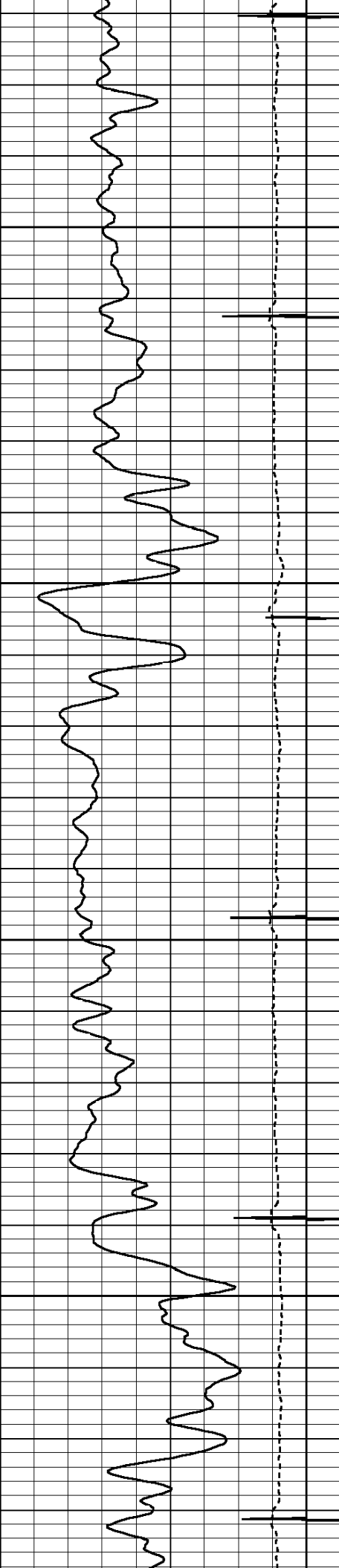




6100

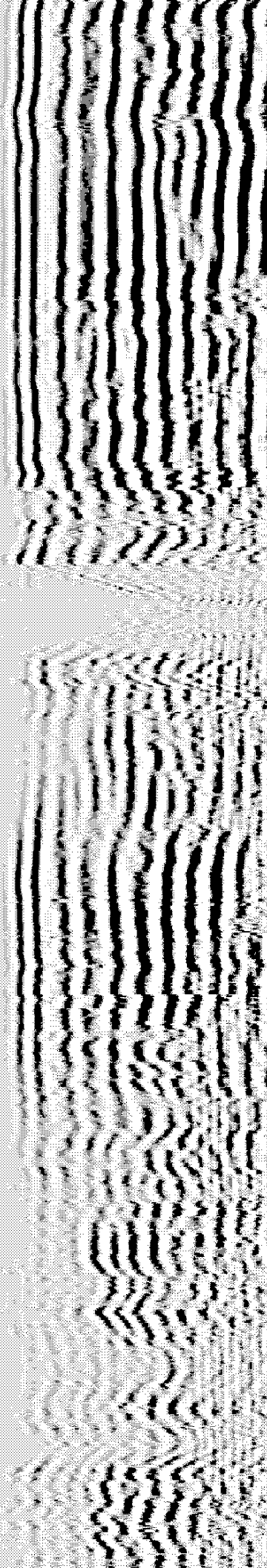
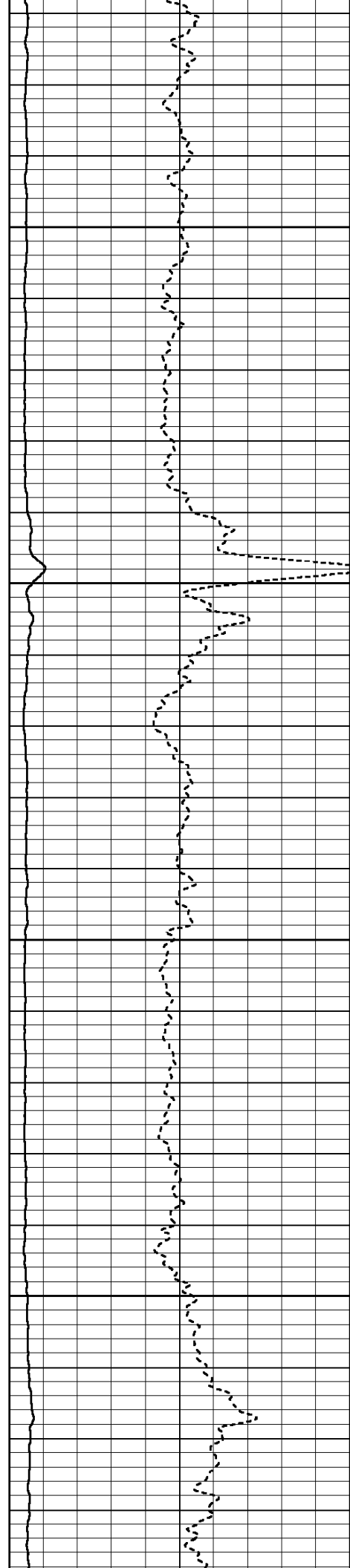
6200

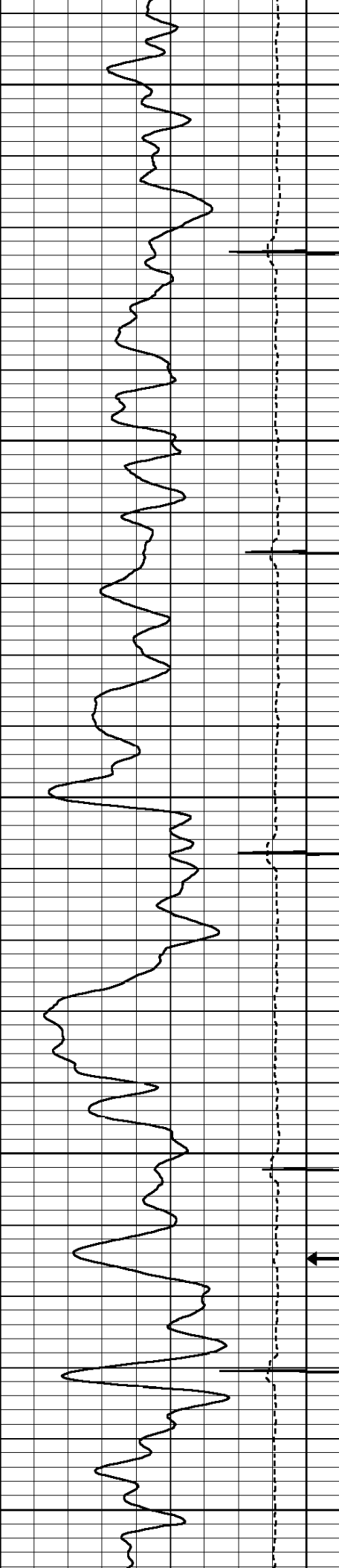




6300

6400



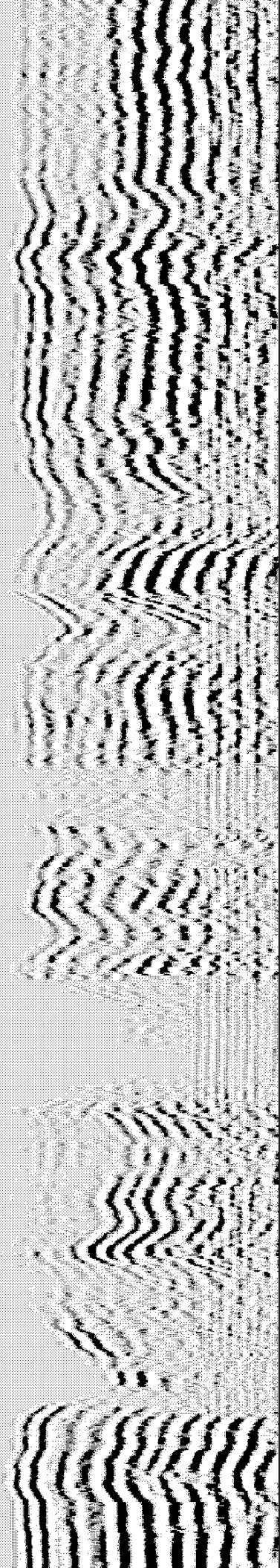
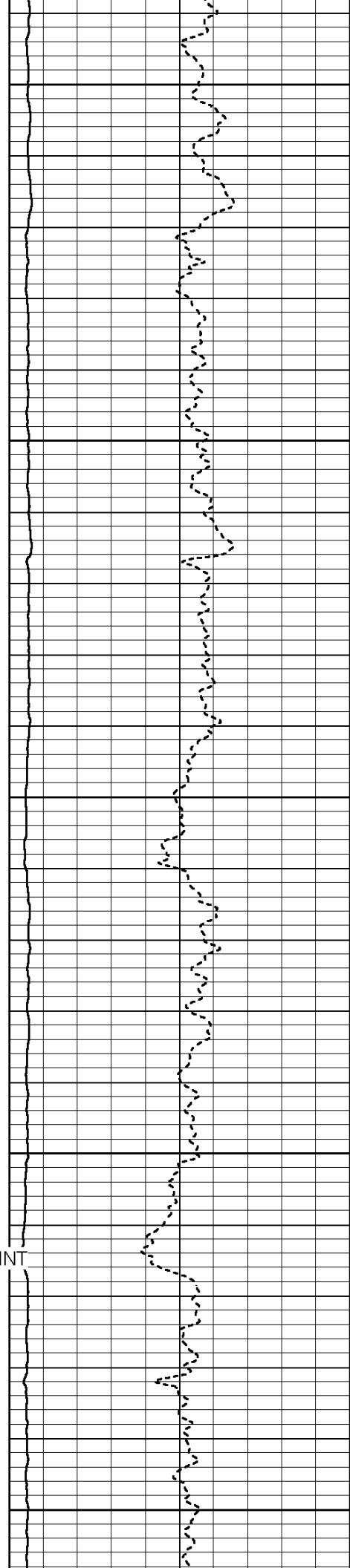


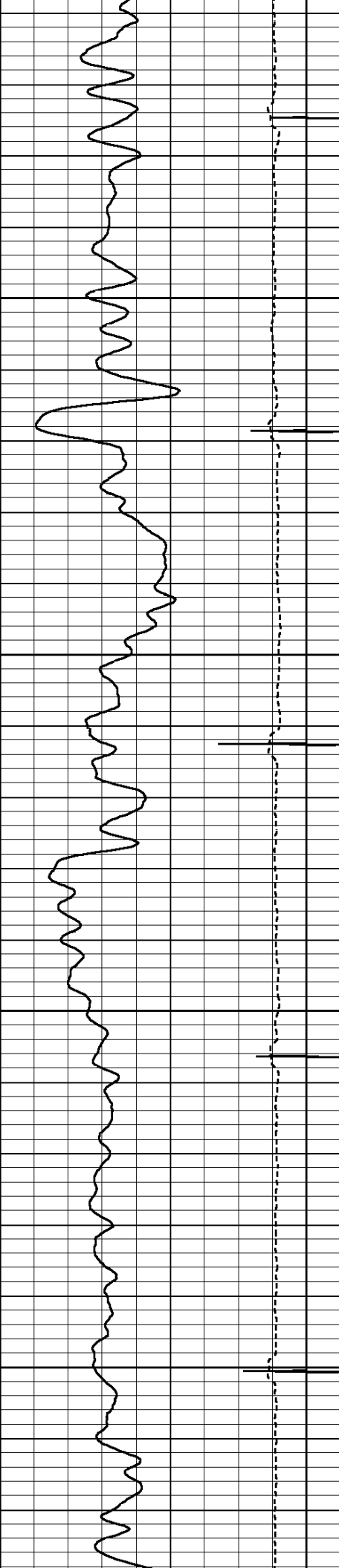
6500

6600

6700

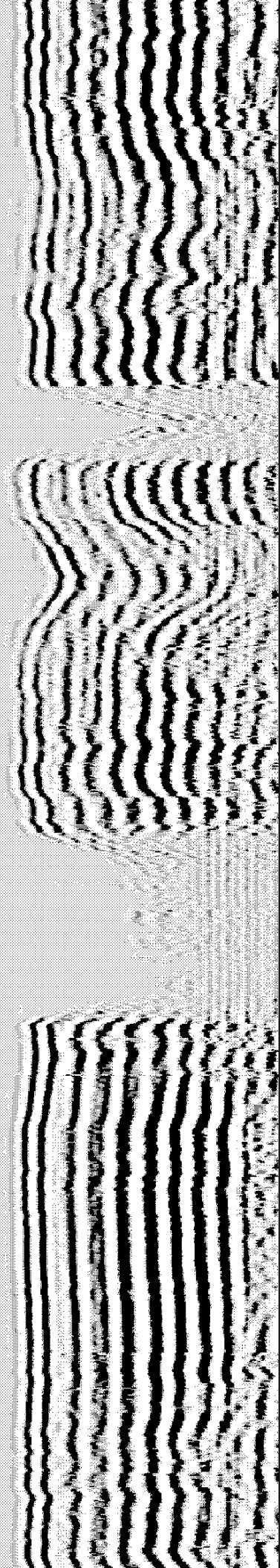
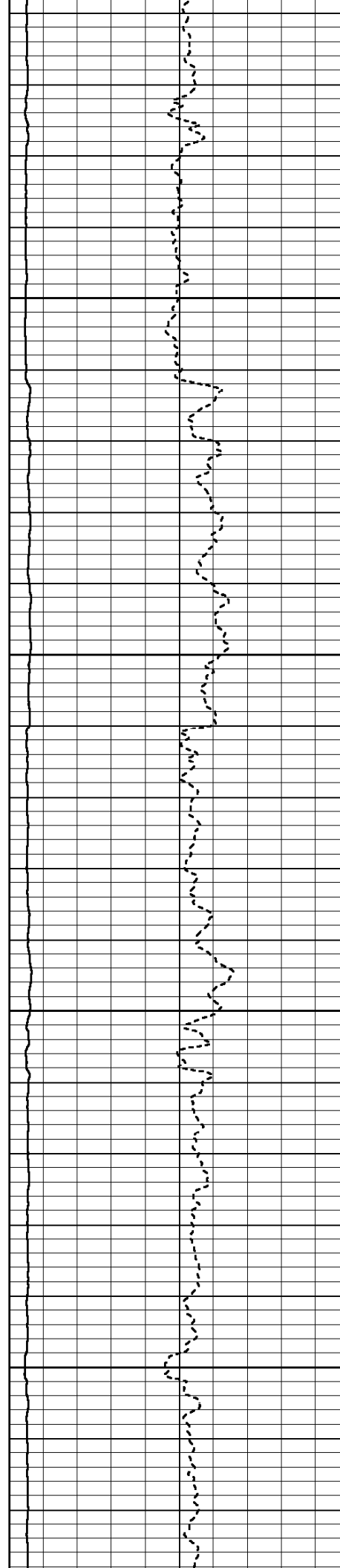
← SHORT JOINT

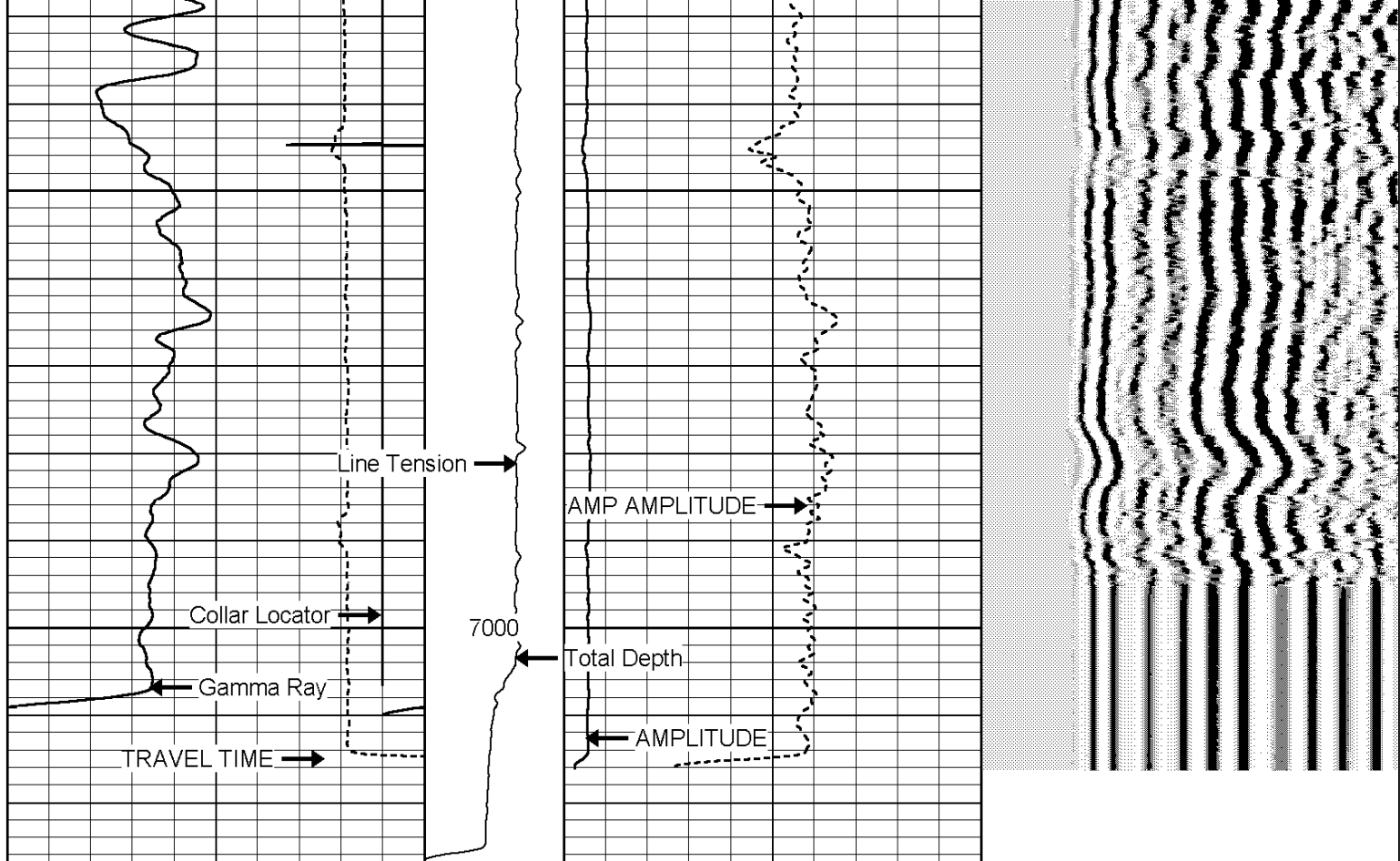




6800

6900





370	TRAVEL TIME (usec)	170	TENSION	0	AMP AMPLITUDE (mV)	10	200	MSG	1200
9	Collar Locator	-1	(lb)1500	0	AMPLITUDE (mV)	100			
0	Gamma Ray (GAPI)	200							

HALLIBURTON

ACOUSTIC CEMENT BOND LOG

MAIN LOG SECTION
5"=100'

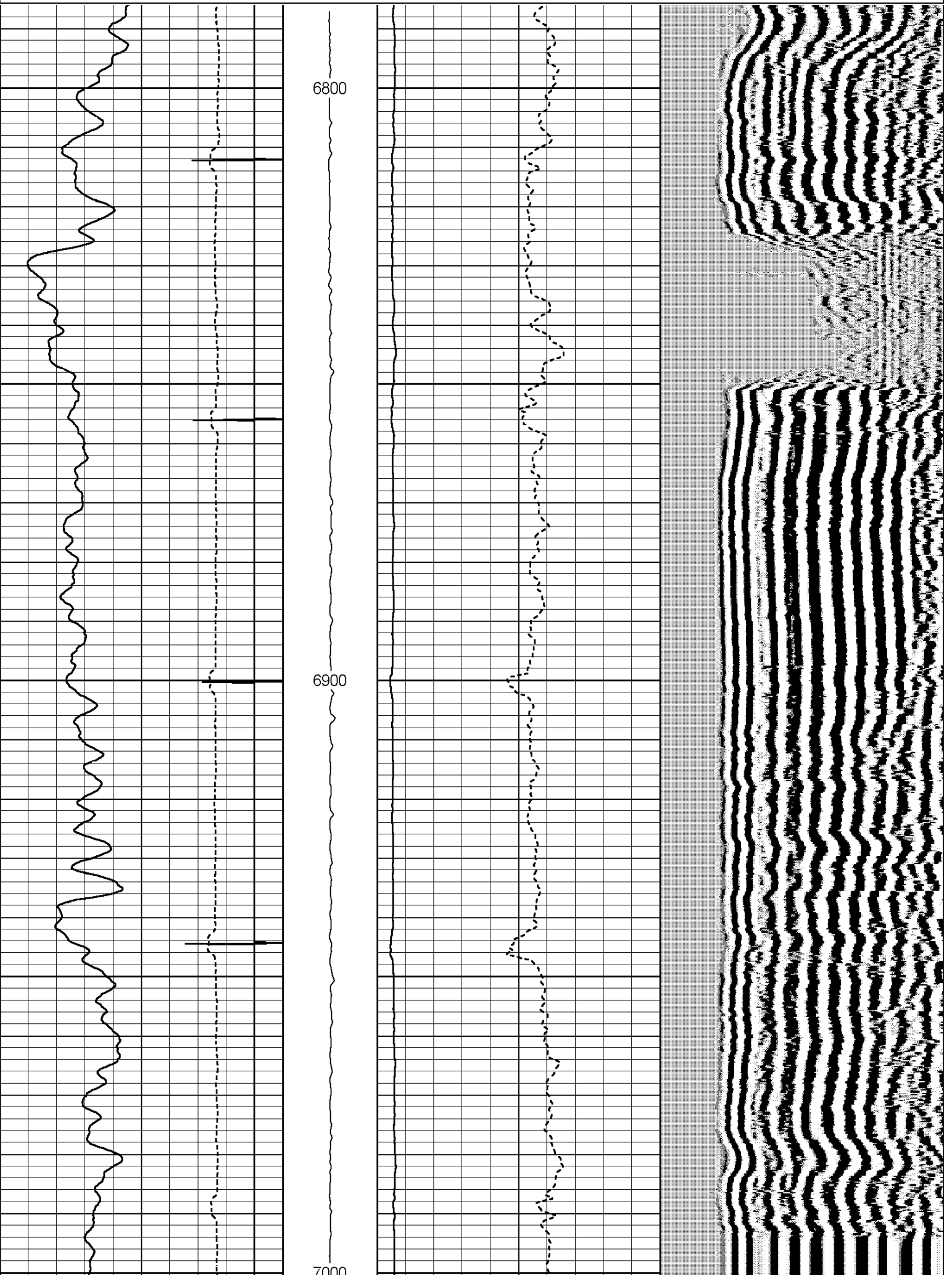
HALLIBURTON

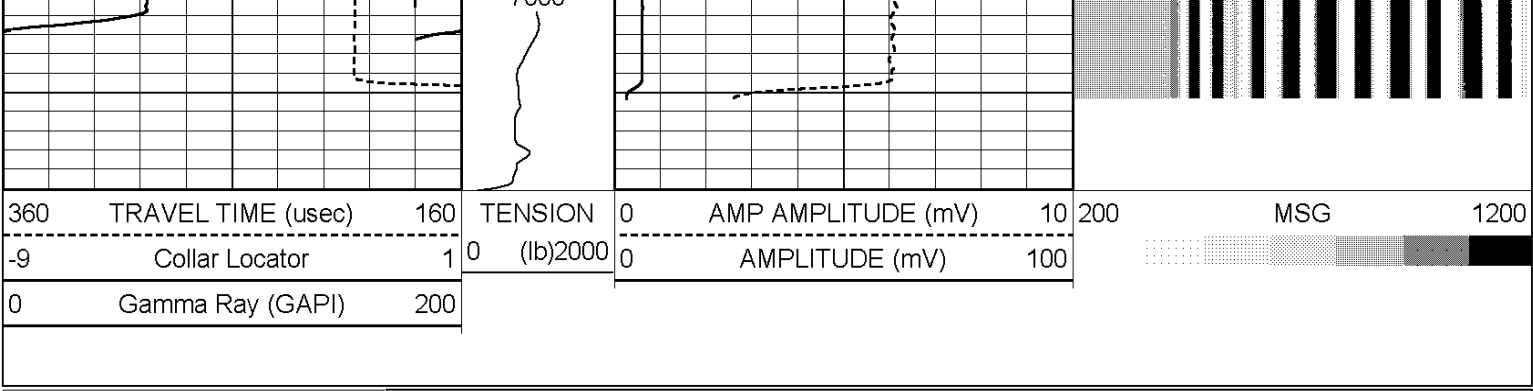
ACOUSTIC CEMENT BOND LOG

REPEAT LOG SECTION
5"=100'

Database File: scott_34a_25_692_cbl.db
 Dataset Pathname: CBL/REPEAT
 Presentation Format: cbl_main
 Dataset Creation: Mon Feb 25 00:23:44 2008 by Log Halliburton Casedho
 Charted by: Depth in Feet scaled 1:240

360	TRAVEL TIME (usec)	160	TENSION	0	AMP AMPLITUDE (mV)	10	200	MSG	1200
-9	Collar Locator	1	(lb)2000	0	AMPLITUDE (mV)	100			
0	Gamma Ray (GAPI)	200							





HALLIBURTON

ACOUSTIC CEMENT BOND LOG

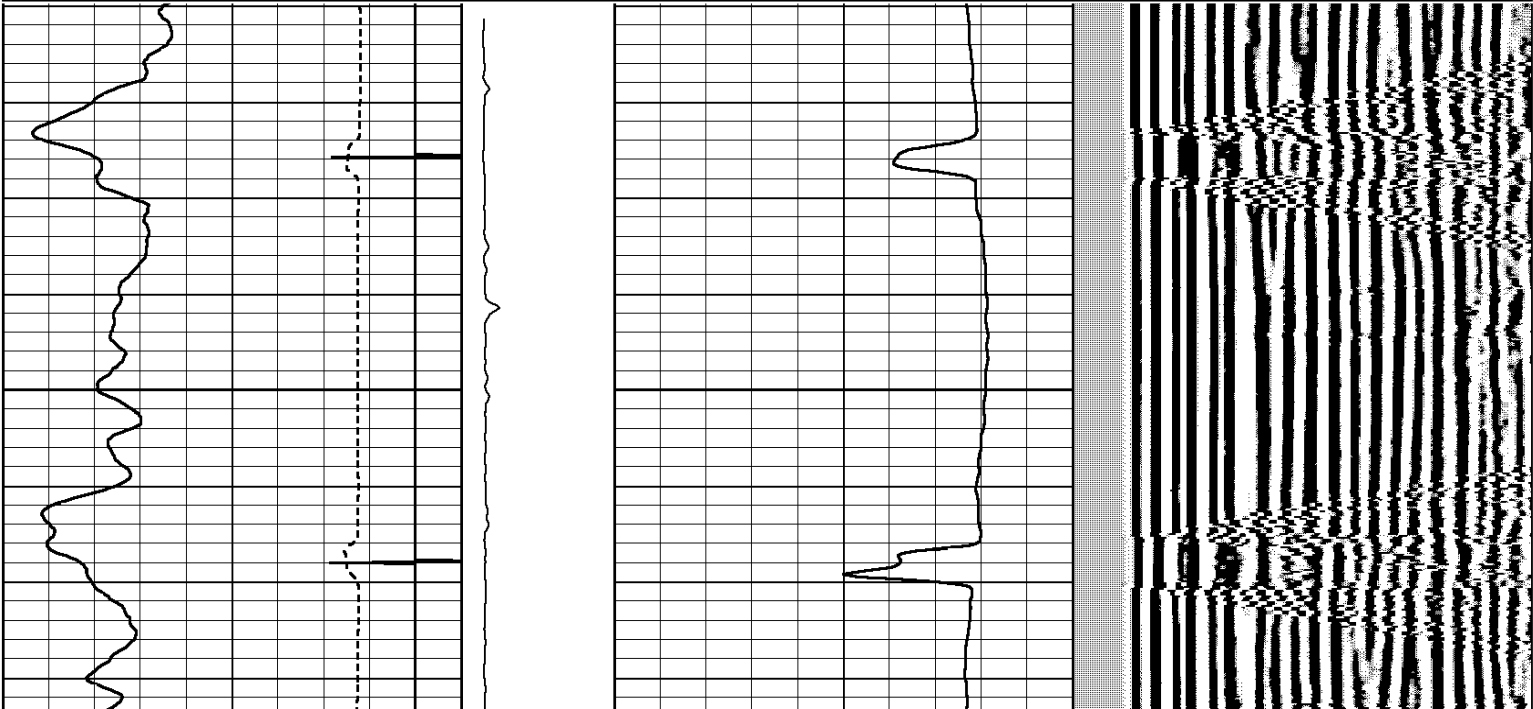
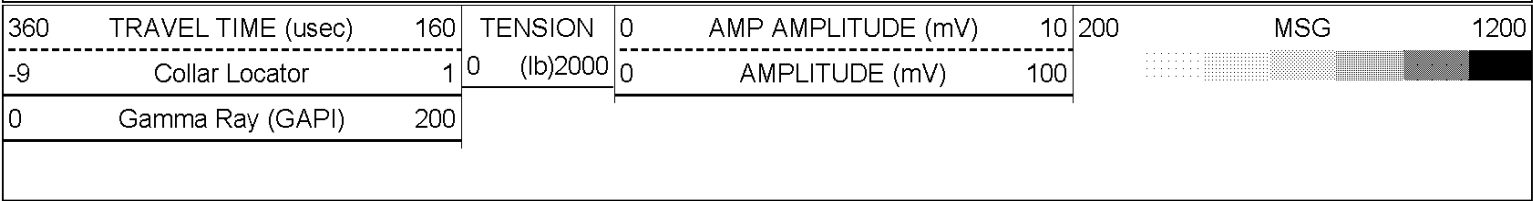
REPEAT LOG SECTION
5"=100'

HALLIBURTON

ACOUSTIC CEMENT BOND LOG

SURFACE CASING SHOE LOG SECTION
5"=100'

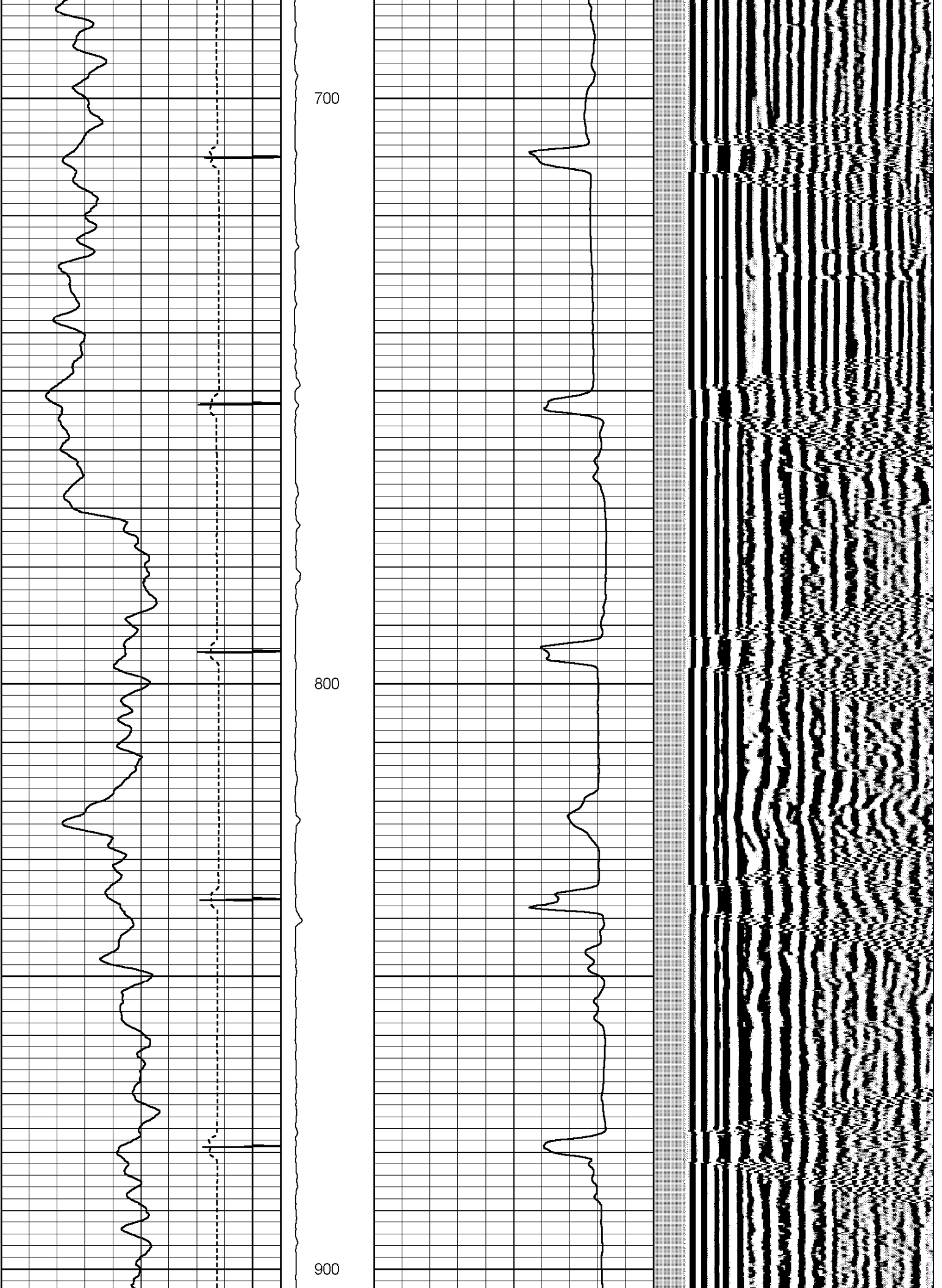
Database File: scott_34a_25_692_cbl.db
 Dataset Pathname: CBL/S_CASE
 Presentation Format: cbl_main
 Dataset Creation: Mon Feb 25 01:45:57 2008 by Log Halliburton Casedho
 Charted by: Depth in Feet scaled 1:240

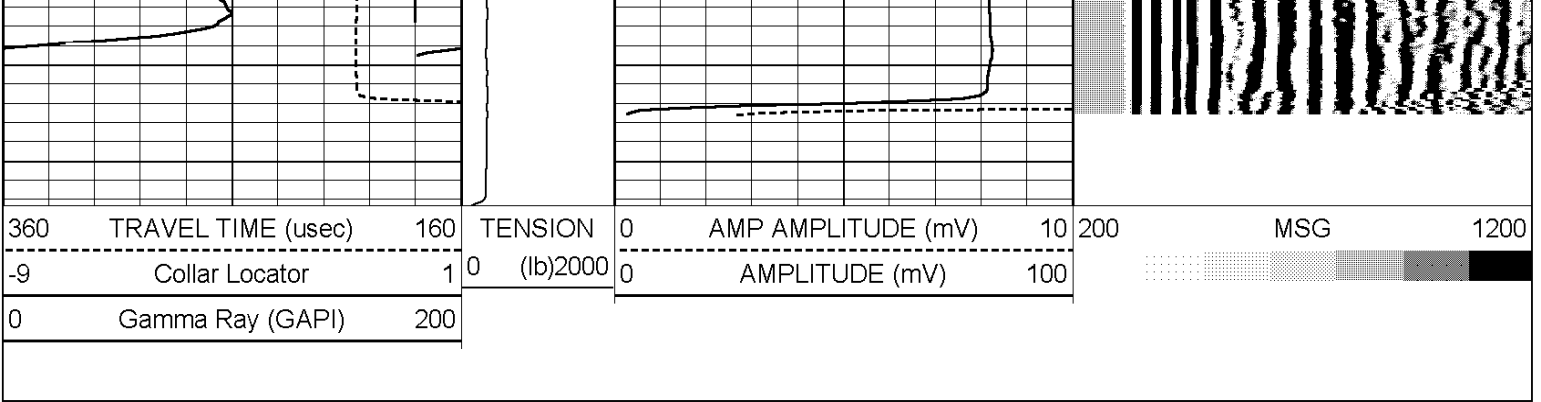


700

800

900





HALLIBURTON

ACOUSTIC CEMENT BOND LOG

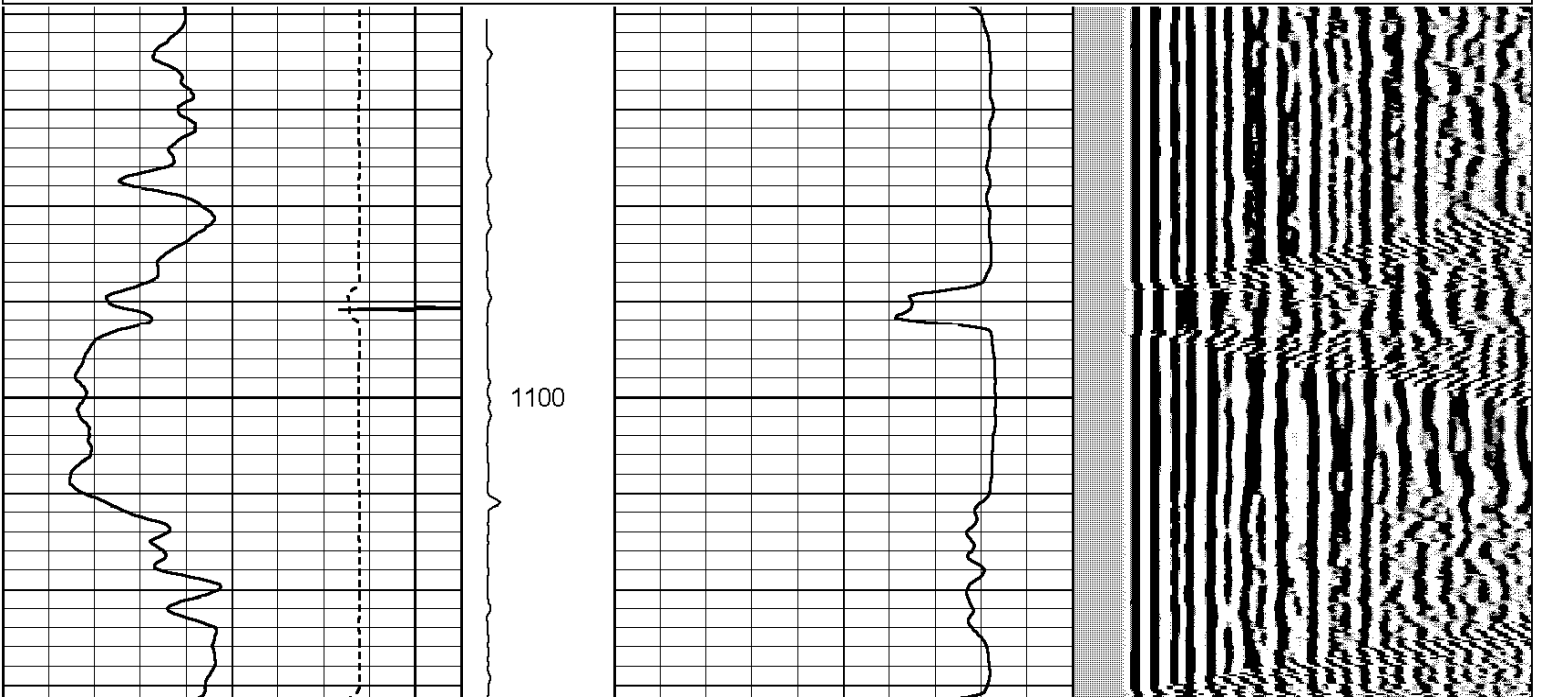
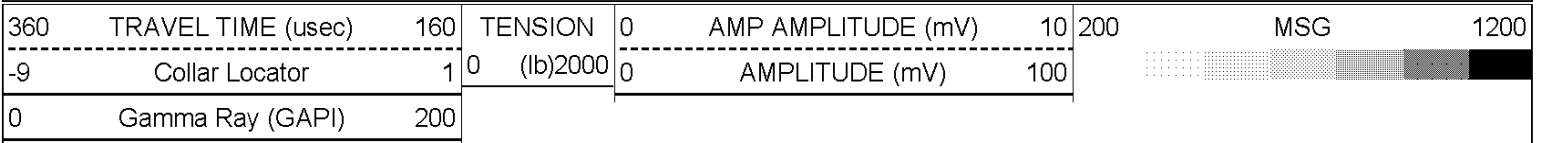
SURFACE CASING SHOE LOG SECTION
5"=100'

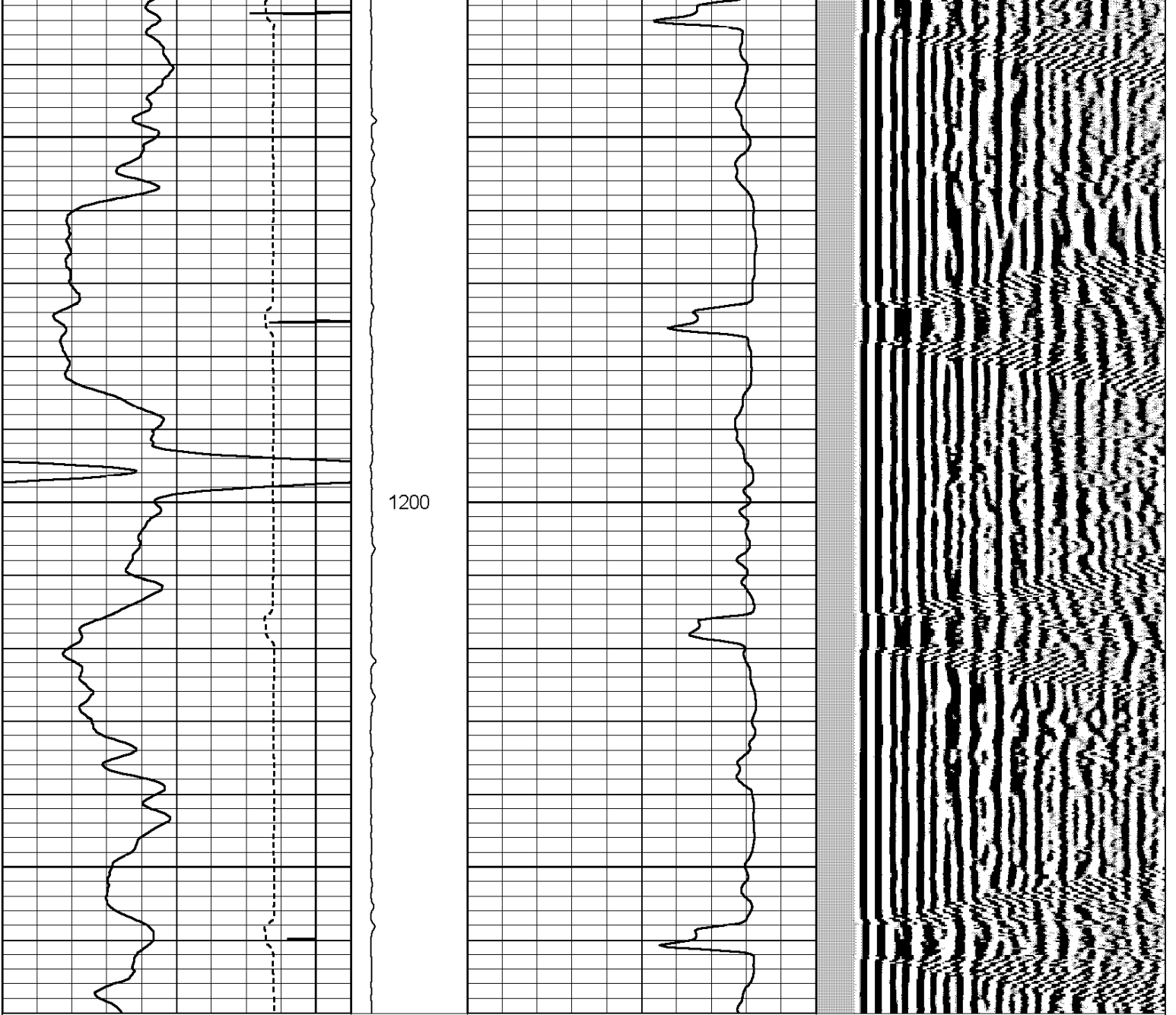
HALLIBURTON

ACOUSTIC CEMENT BOND LOG

FREE PIPE LOG SECTION
5"=100'

Database File: scott_34a_25_692_cbl.db
 Dataset Pathname: CBL/FREE1
 Presentation Format: cbl_main
 Dataset Creation: Sun Feb 24 23:41:35 2008 by Log Halliburton Casedho
 Charted by: Depth in Feet scaled 1:240





360	TRAVEL TIME (uSec)	160	TENSION	0	AMP AMPLITUDE (mV)	10	200	MSG	1200
-9	Collar Locator	1	(lb)2000	0	AMPLITUDE (mV)	100			
0	Gamma Ray (GAPI)	200							

HALLIBURTON	<h2>ACOUSTIC CEMENT BOND LOG</h2> <p>FREE PIPE LOG SECTION 5"=100'</p>
--------------------	--

Calibration Report	
Database File:	scott_34a_25_692_cbl.db
Dataset Pathname:	CBL/F_CBL
Dataset Creation:	Mon Feb 25 04:37:27 2008

Gamma Ray Calibration Report

SHOP CALIBRATION

Sun Feb 24 09:50:12 2008

Background	Counts/Sec.	Gain	Offset	Jig	Units
Calibrator	136.1				cps
	496.5	0.4893			cps
					GAPI/cps

PRIMARY VERIFICATION

Sun Feb 24 07:34:55 2008

Background	64.7				cps
Calibrator	319.1				cps
Difference				254.4	GAPI

BEFORE SURVEY VERIFICATION

Background	0.0				cps
Calibrator	0.0				cps
Difference				0.0	GAPI

AFTER SURVEY VERIFICATION

Background	0.0				cps
Calibrator	0.0				cps
Difference				0.0	GAPI

Segmented Cement Bond Log Calibration Report

Serial Number: 400
 Tool Model: CBL_DC
 Calibration Casing Diameter: 4.500 in
 Calibration Depth: 1199.667 ft

Master Calibration, performed Sun Feb 24 23:40:04 2008:

	Raw (v)		Calibrated (mv)		Results	
	Zero	Cal	Zero	Cal	Gain	Offset
3'	-0.011	1.432	2.000	81.196	54.900	2.600
CAL						
5'	-0.011	1.303	2.000	81.196	60.256	2.652

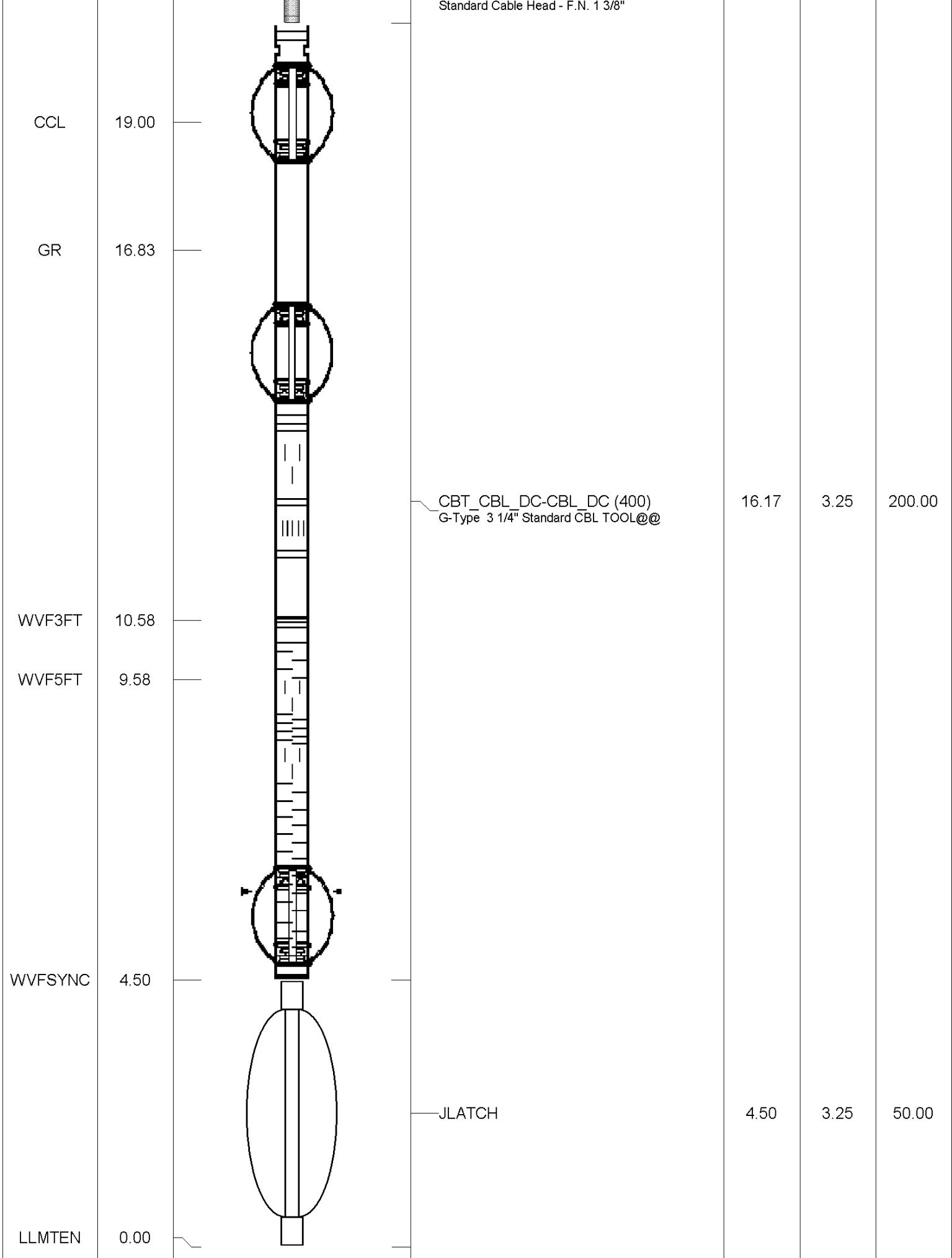
Internal Reference Calibration, performed Wed Dec 31 17:00:00 1969:

	Raw (v)		Calibrated (v)		Results	
	Zero	Cal	Zero	Cal	Gain	Offset
CAL						

Air Zero Calibration, performed Sun Feb 24 23:20:07 2008:

	Raw (v)		Calibrated (v)		Results	
	Zero		Zero		Gain	Offset
3'	0.000		0.000			0.000
5'	0.000		0.000			0.000

Sensor	Offset (ft)	Schematic	Description	Len (ft)	OD (in)	Wt (lb)
			STNDRD	1.15	1.44	1.10



Total Weight: 251.10 lb
O.D. 3.25 in

Company **BILL BARRETT CORPORATION**
Well **SCOTT 34A-25-692**
Field **MAMM CREEK**
County **GARFIELD** State **CO**

HALLIBURTON

ACOUSTIC CEMENT
BOND LOG