

**Patterson**

**GAMMA  
NEUTRON  
LOG**

Company XTO Energy Inc.  
Well Hill Ranch 16-09  
Field Purgatoire River  
County Las Animas State Colorado

Location: API # : 05 071 08473 00  
1910' FSL & 628' FEL  
SEC 16 TWP 35S RGE 67W  
Permanent Datum Ground Level Elevation 7762'  
Log Measured From Ground Level  
Drilling Measured From Ground Level  
Other Services  
temp  
cbl  
Elevation  
K.B. 7762'  
D.F. -----  
G.L. -----

Company XTO Energy Inc.  
Well Hill Ranch 16-09  
Field Purgatoire River  
County Las Animas  
State Colorado

Date 11-08-05

Run Number	One
Depth Driller	2085'
Depth Logger	1475'
Bottom Logged Interval	1473'
Top Log Interval	Surface
Open Hole Size	7 7/8"
Type Fluid	Water
Density / Viscosity	///
Max. Recorded Temp.	105
Estimated Cement Top	340'
Time Well Ready	Portable Mast
Time Logger on Bottom	10:45 a.m.
Equipment Number	T677
Location	Trinidad
Recorded By	L. Smith
Witnessed By	Mr. Bill Blatnick

Borehole Record				Tubing Record			
Run Number	Bit	From	To	Size	Weight	From	To

Casing Record	Size	Wgt/Ft	Top	Bottom
Surface String	8 5/8"		0	222'
Prot. String				
Production String				
Liner				

>>> Fold Here >>>

All interpretations are opinions based on inferences from electrical or other measurements and we cannot and do not guarantee the accuracy or correctness of any interpretation, and we shall not, except in the case of gross or willful negligence on our part, be liable or responsible for any loss, costs, damages, or expenses incurred or sustained by anyone resulting from any interpretation made by any of our officers, agents or employees. These interpretations are also subject to our general terms and conditions set out in our current Price Schedule.

Comments

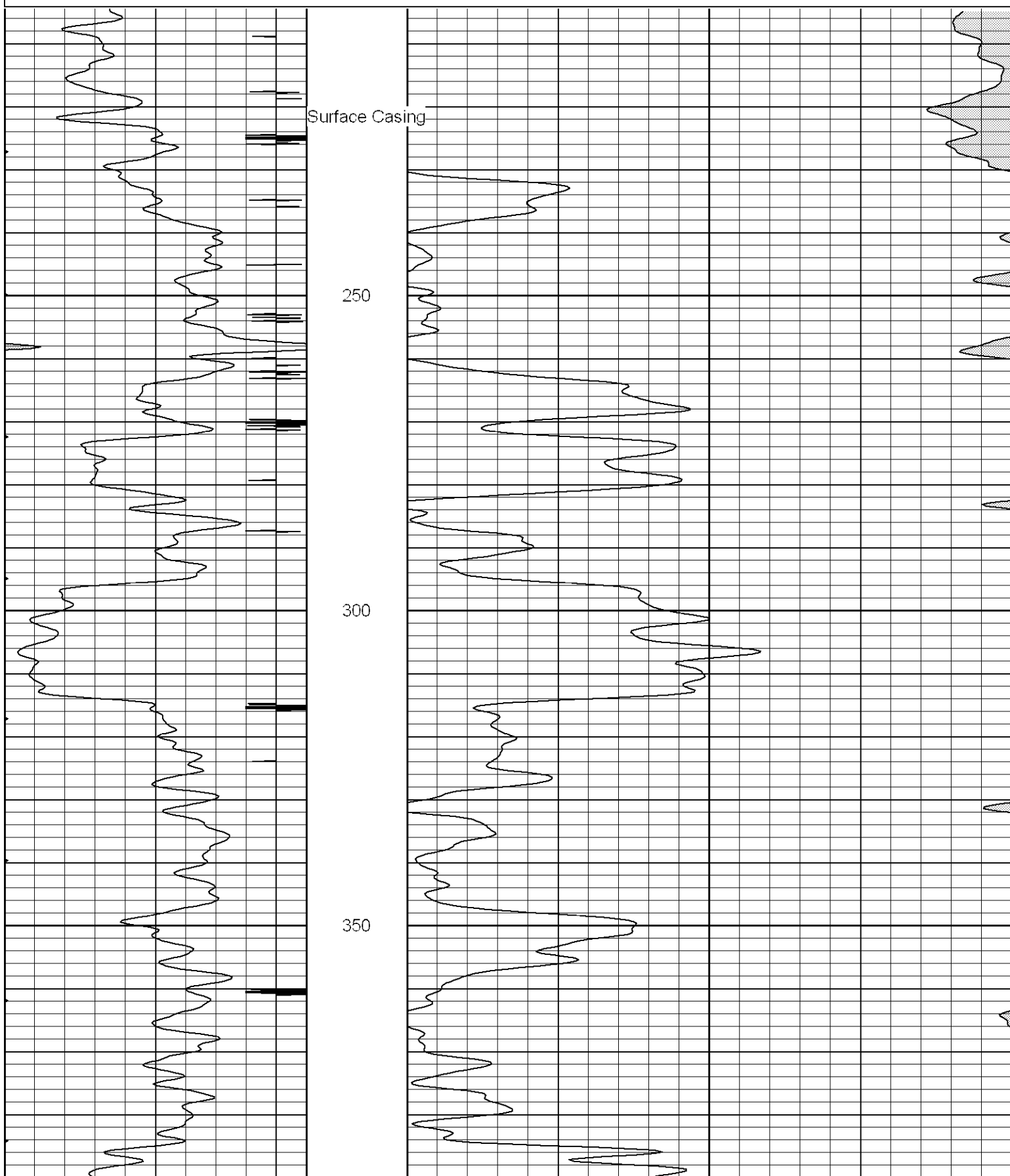
**Patterson**

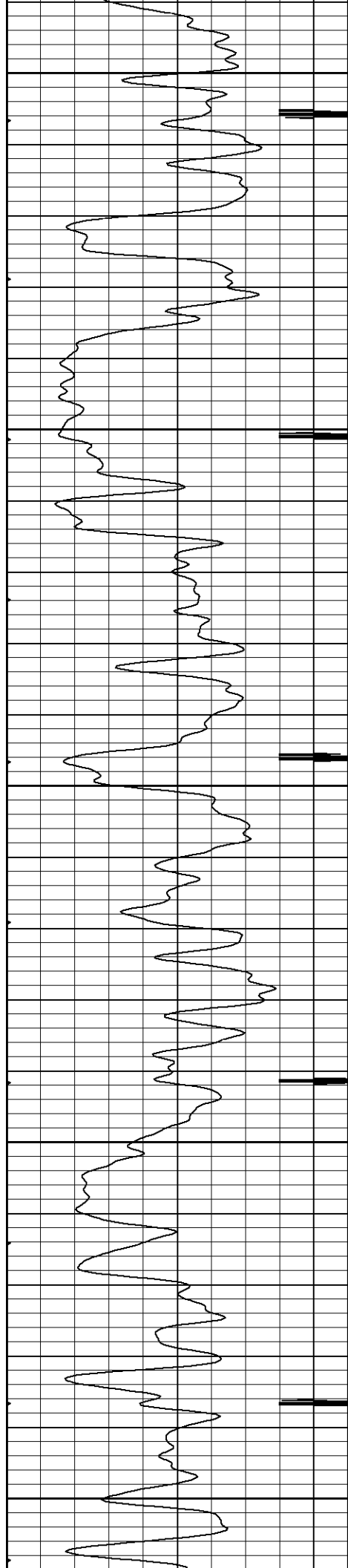
**Main Pass**

Database File: xtohr1609110805b.db  
Dataset Pathname: pass5.1  
Presentation Format: gr-n-ccl  
Dataset Creation: Tue Nov 08 11:47:56 2005 by Calc Warrior 7.0 STD Ope  
Charted by: Depth in Feet scaled 1:240

0	GR (GAPI)	200
18	CCL	-2

30	NPOR (pu)	-10
----	-----------	-----





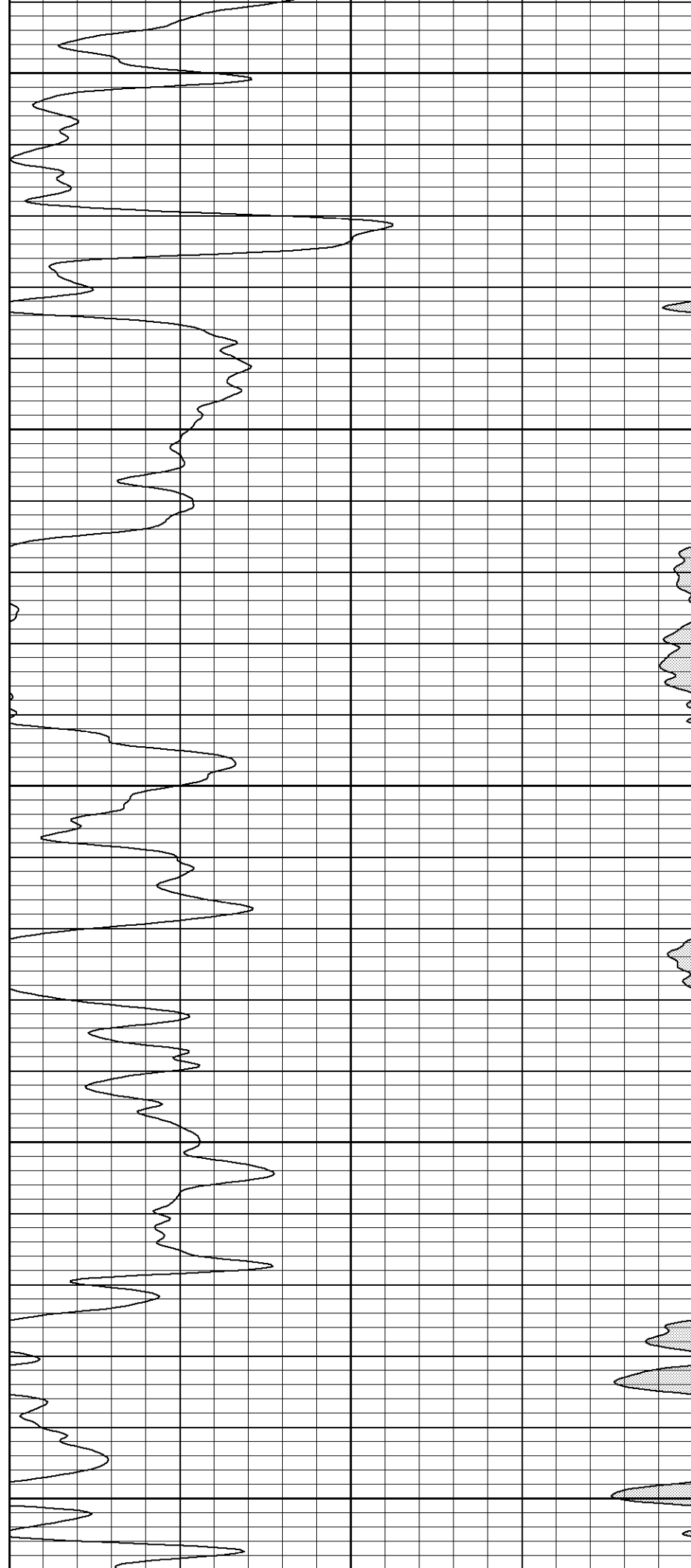
400

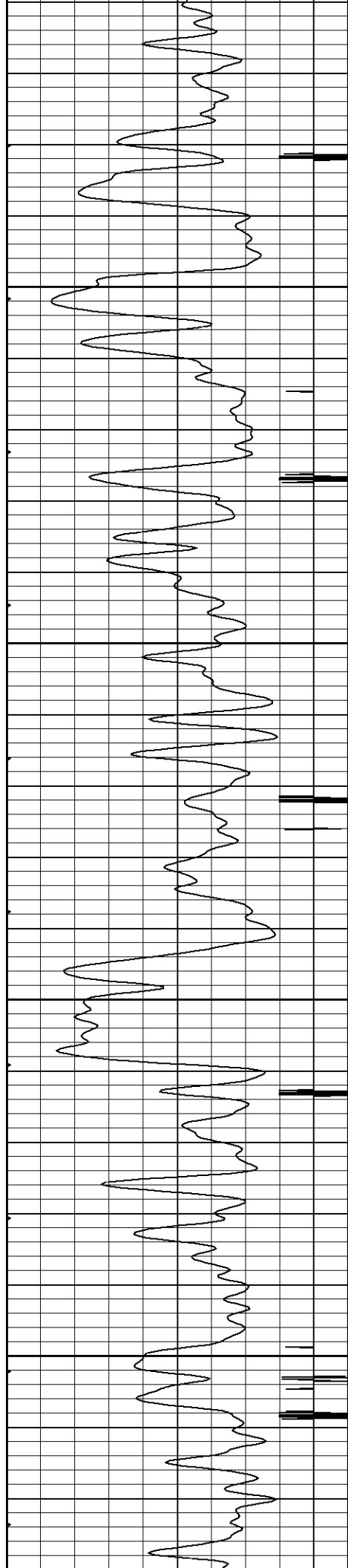
450

500

550

600



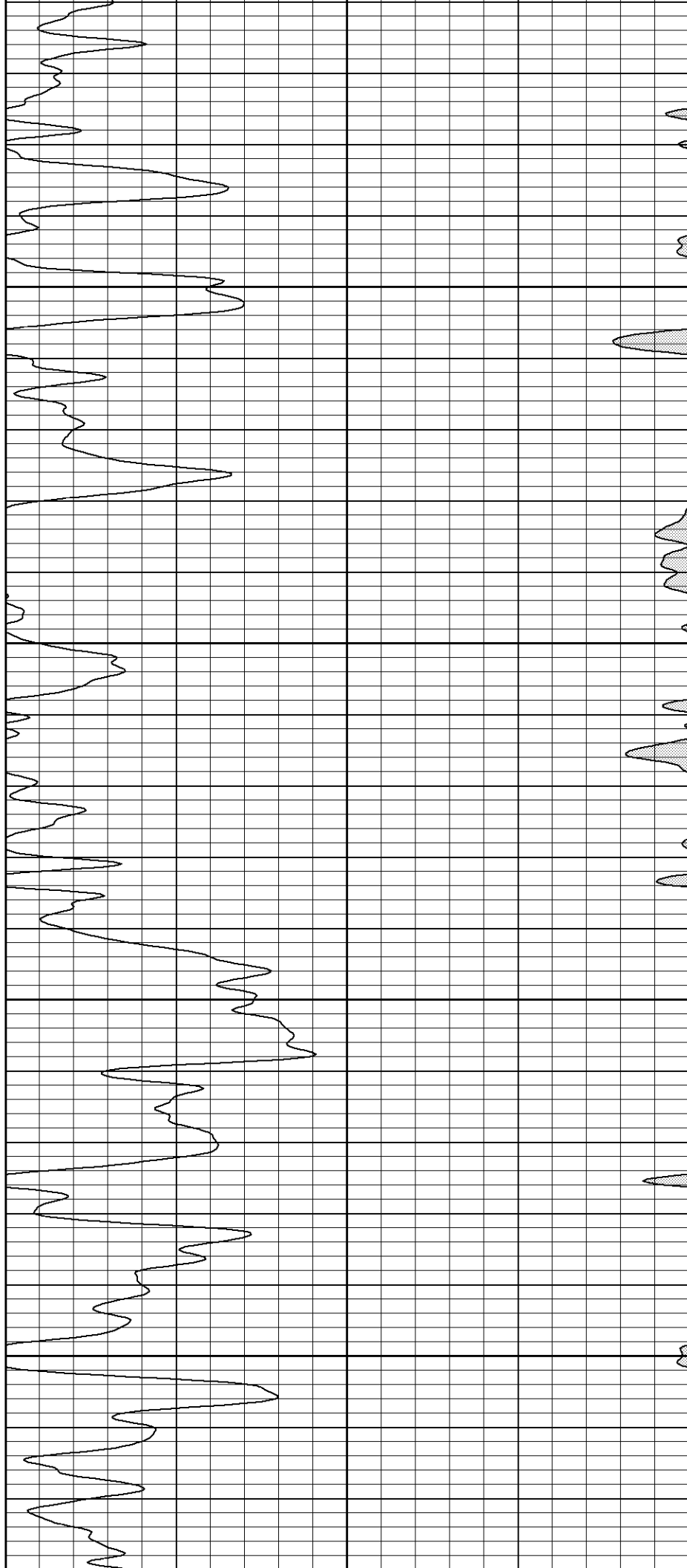


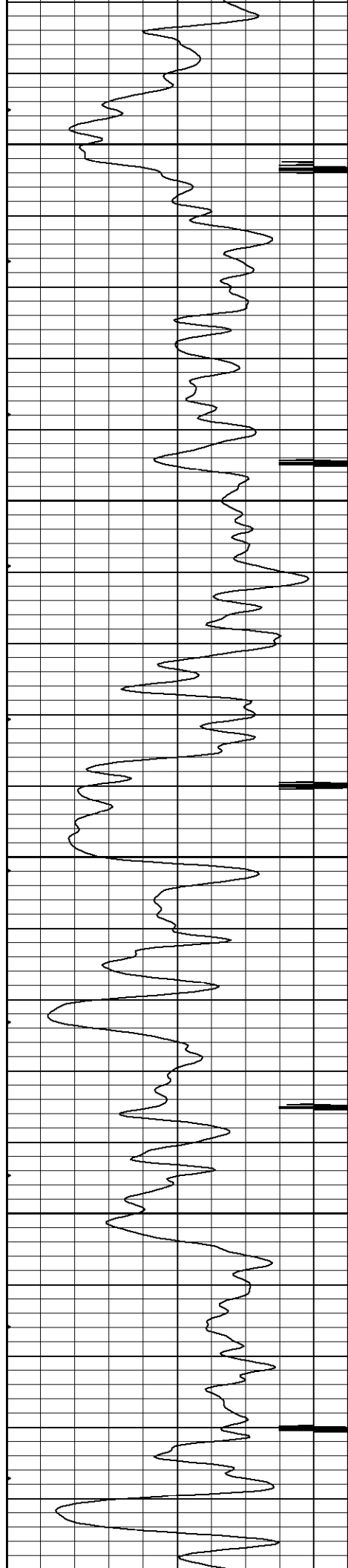
650

700

750

800





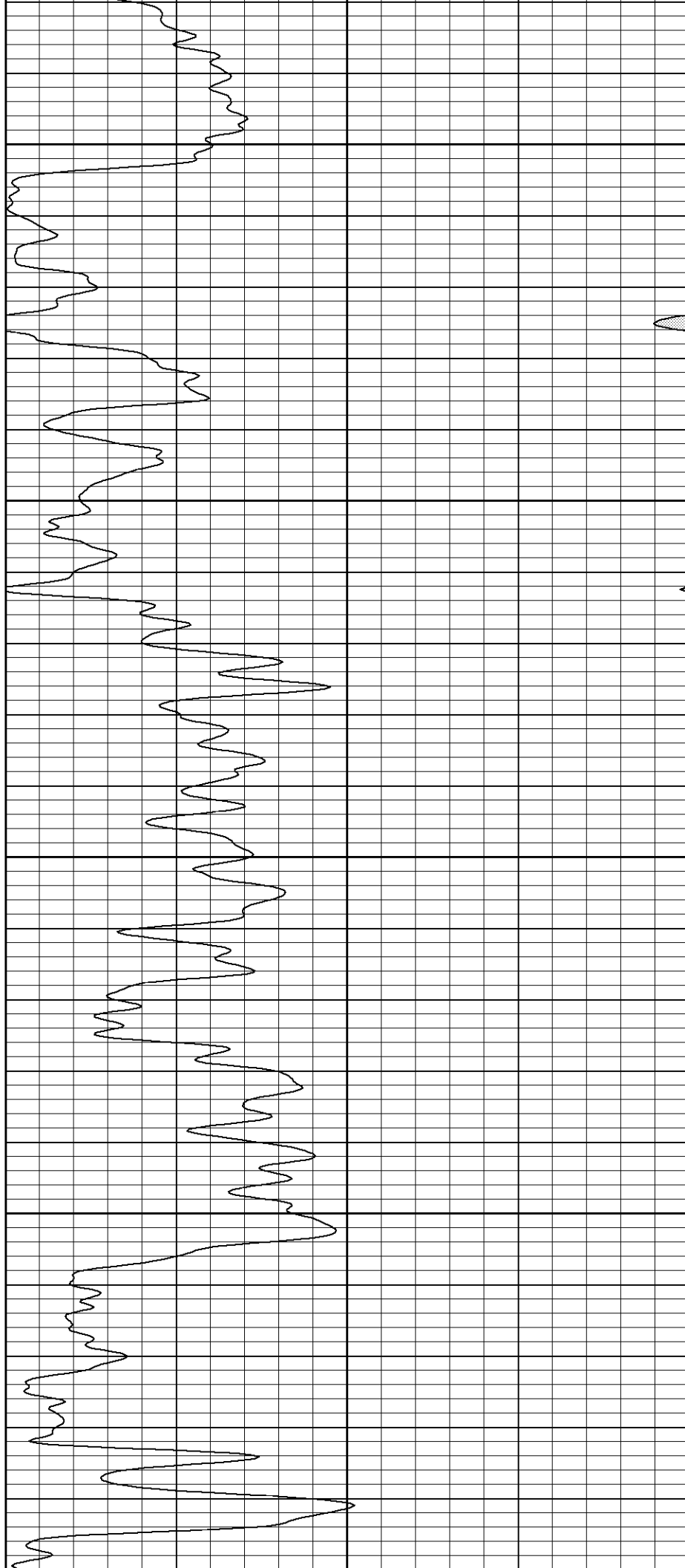
850

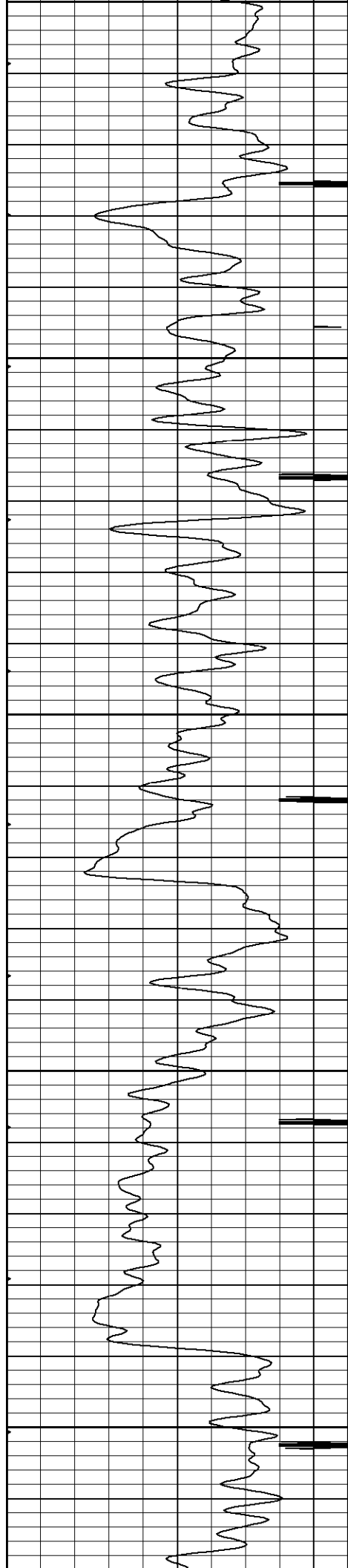
900

950

1000

1050





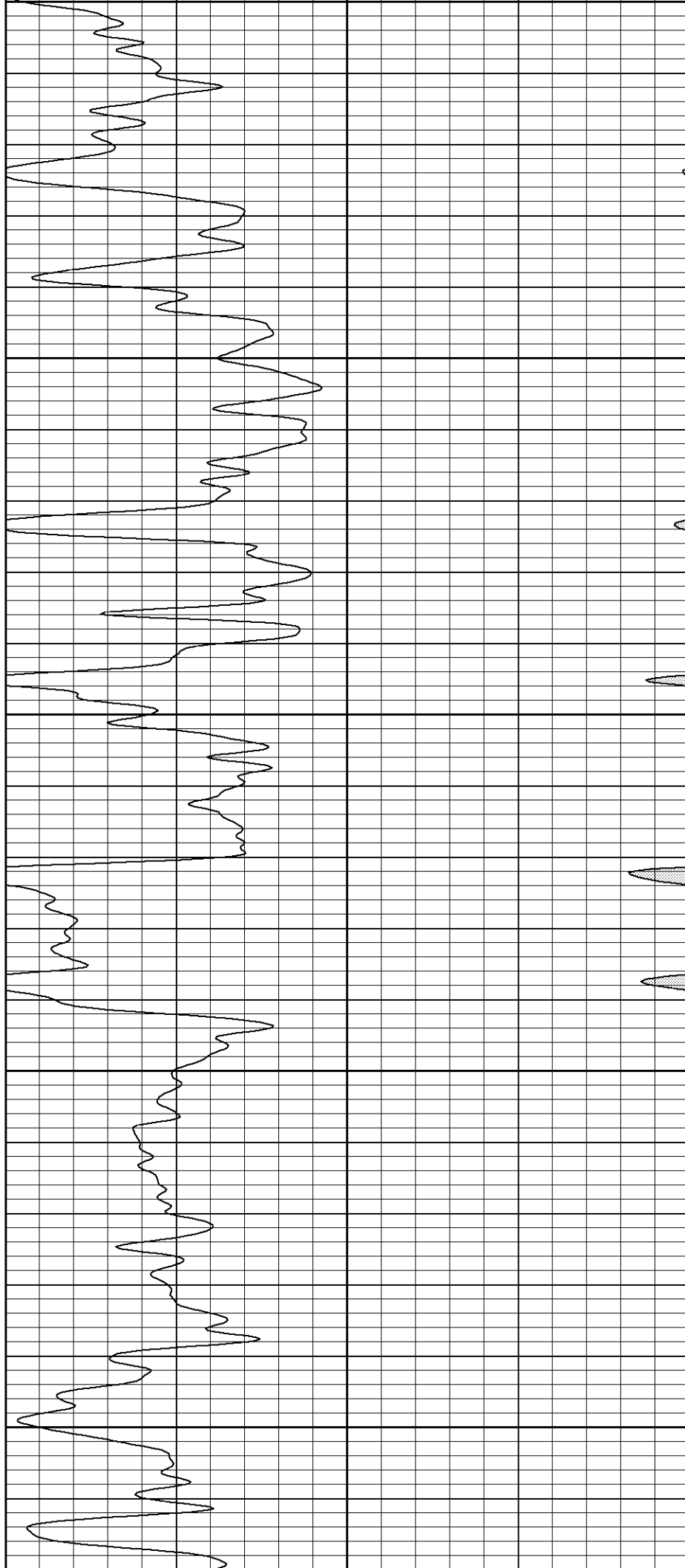
10:30

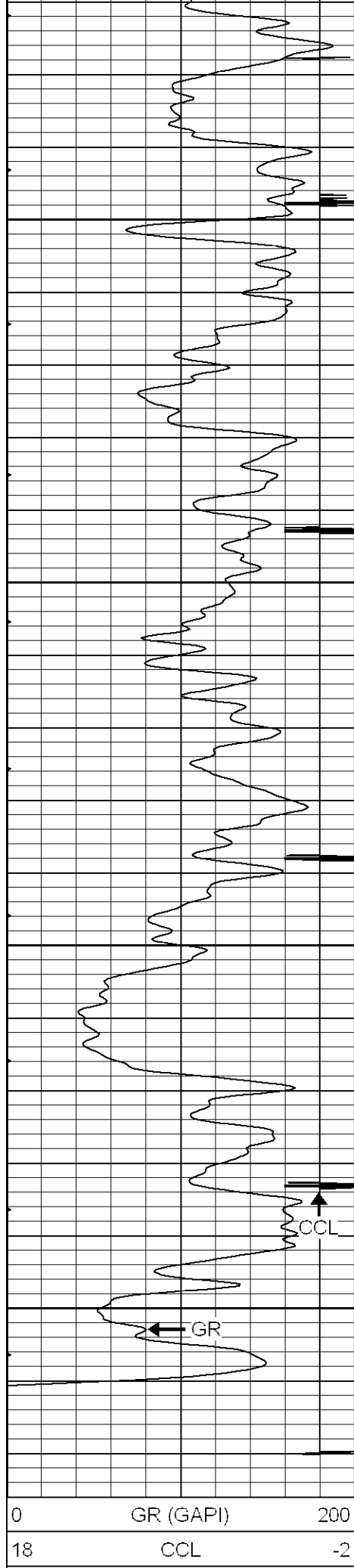
11:00

11:50

12:00

12:50





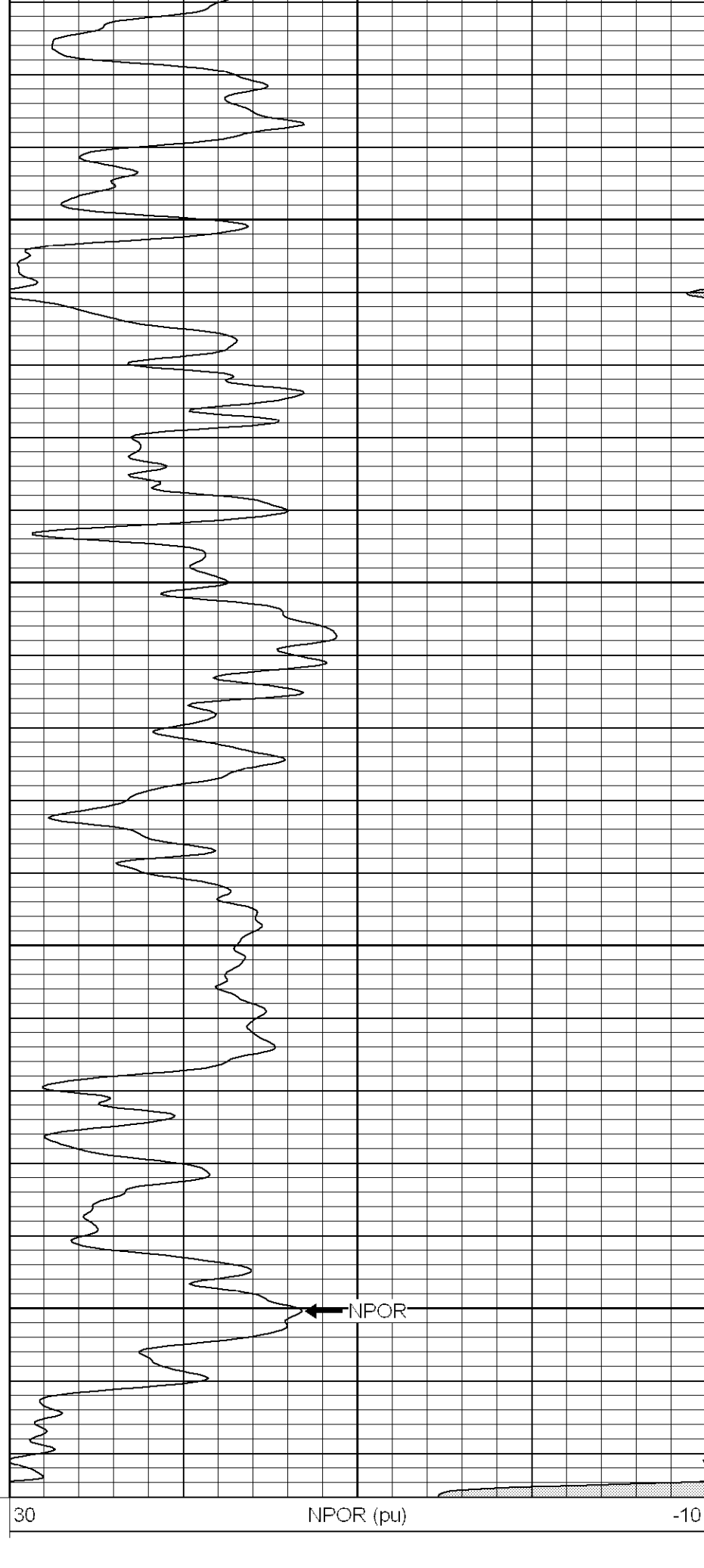
1300

1350

1400

1450

0 GR (GAPI) 200  
18 CCL -2

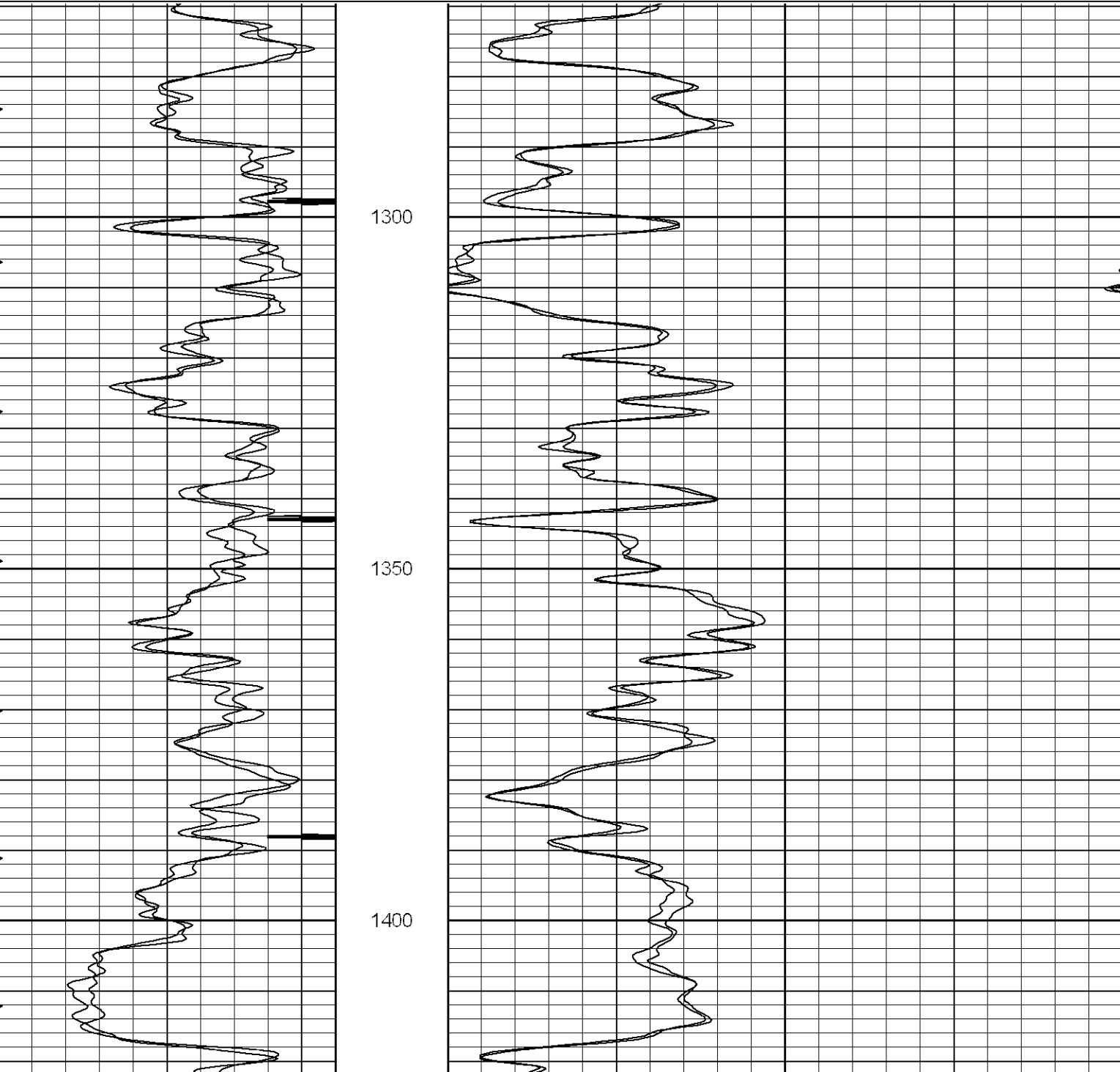


NPOR

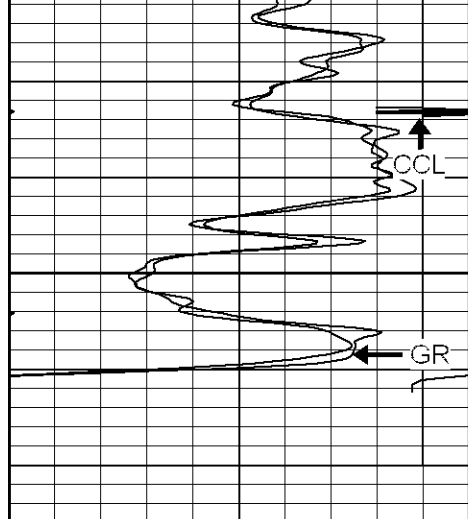
30 NPOR (pu) -10

Database File: xtohr1609110805b.db  
Dataset Pathname: pass4.1  
Presentation Format: gr-n-ccl  
Dataset Creation: Tue Nov 08 11:43:56 2005 by Calc Warrior 7.0 STD Ope  
Charted by: Depth in Feet scaled 1:240

0	GR (GAPI)	200	30	NPOR (pu)	-10
18	CCL	-2	30	NPOR-repeat (pu)	-10
0	GR-repeat (GAPI)	200			

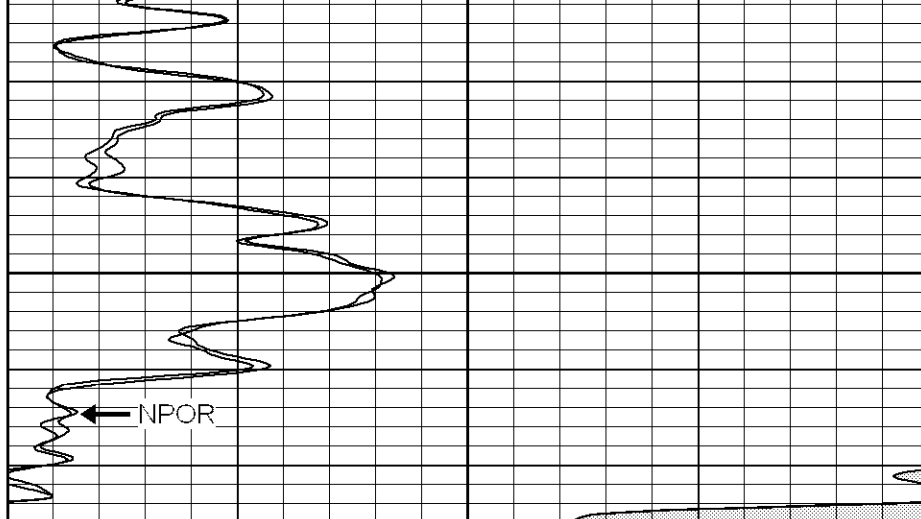






1450

0	GR (GAPI)	200
18	CCL	-2
0	GR-repeat (GAPI)	200



30	NPOR (pu)	-10
30	NPOR-repeat (pu)	-10

### Neutron Calibration Report

Serial Number: Titan  
 Tool Model: T  
 Performed: Fri Nov 04 11:50:20 2005  
  
 Calibrator Value: 1200 NAPI  
 Calibrator Reading: 1700 cps  
 Sensitivity: 1 NAPI/cps

### Cement Bond Log Calibration Report

Serial Number: Titan2  
 Tool Model: 2  
 Performed: Tue Nov 08 10:34:03 2005  
  
 Depth: 726.161 ft  
 Casing Diameter: 5.5 in  
  
 3' Spacing 5' Spacing  
  
 Signal Zero: 1 1 mV  
 Calibrated Amplitude: 85 85 mV  
 Reading at Signal Zero: 0 0.0181641 V  
 Reading in Free Pipe: 1.27 4 V  
  
 Gain: 66.1417 21.0958  
 Offset: 1 0.616814

### Gamma Ray Calibration Report

Serial Number: TITAN2POINT  
 Tool Model: T2POINT  
 Performed: Tue Nov 08 10:34:14 2005  
  
 Calibrator Value: 240.0 GAPI  
  
 Background Reading: 40.0 cps  
 Calibrator Reading: 200.0 cps  
  
 Sensitivity: 1.4000 GAPI/cps

Sensor	Offset (ft)	Schematic	Description	Len (ft)	OD (in)	Wt (lb)
CHD	17.42		None	0.75	1.50	5.00
GR	15.41		GR-T2POINT (TITAN2POINT)	2.52	2.44	25.00
WVF5	11.26		CBL-2 (Titan2)	7.23	2.44	110.00
WVF3	10.26					
CCL	5.71		CCL-T2 (Titan2) Short	1.91	2.75	15.00
NEU	1.41		NEU-T (Titan) Titan	5.01	1.69	21.00
Dataset: /field/well/run1/_plots/_jobs/_gn Total Length: 17.42 ft Total Weight: 176.00 lb O.D. 2.75 in						