

CEMENT BOND
GAMMA RAY
LOG

Company XTO Energy Inc.

Well Apache Canyon 31-10

Field	Purgatorie River
1	1
2	2
3	3
4	4
5	5
6	6
7	7
8	8
9	9
10	10
11	11
12	12
13	13
14	14
15	15
16	16
17	17
18	18
19	19
20	20
21	21
22	22
23	23
24	24
25	25
26	26
27	27
28	28
29	29
30	30
31	31
32	32
33	33
34	34
35	35
36	36
37	37
38	38
39	39
40	40
41	41
42	42
43	43
44	44
45	45
46	46
47	47
48	48
49	49
50	50
51	51
52	52
53	53
54	54
55	55
56	56
57	57
58	58
59	59
60	60
61	61
62	62
63	63
64	64
65	65
66	66
67	67
68	68
69	69
70	70
71	71
72	72
73	73
74	74
75	75
76	76
77	77
78	78
79	79
80	80
81	81
82	82
83	83
84	84
85	85
86	86
87	87
88	88
89	89
90	90
91	91
92	92
93	93
94	94
95	95
96	96
97	97
98	98
99	99
100	100

County Las Animas State CO

Location: AP| #: 05 071 09115 00

2444' FSL & 1644' FEL

SEC 31 TWP 33S RGE 67W

Permanent Datum	Ground Level	Elevation	7664
-----------------	--------------	-----------	------

Drilling Measured From	Ground Level	G.L. 7664
------------------------	--------------	-----------

Date _____

Run Number

Depth Driller

Bottom Logged Interval

Top Log Interval

Open Hole Size

Type Fluid

Density / Viscosity

Max. Recorded Temp.

Time Well Ready

Time Logger on Bottom

Equipment Number

Location

Recorded By _____

Witnessed By _____

Run Number	Bit
------------	-----

[illegible]

--	--

Casino Record	
---------------	--

Surface String	
----------------	--

Prot. String	
--------------	--

Production String	
isort	

Line	
------	--

<<< Fold Here >>>

All interpretations are opinions based on inferences from electrical or other measurements and we cannot and do not guarantee the accuracy or correctness of any interpretation, and we shall not, except in the case of gross or willful negligence on our part, be liable or responsible for any loss, costs, damages, or expenses incurred or sustained by anyone resulting from any interpretation made by any of our officers, agents or employees. These interpretations are also subject to our general terms and conditions set out in our current Price Schedule.

Comments

Turn at Bosque 4 mi.past weston, up Ciruela Canyon, stay left at windmill, stay on main road. second location.

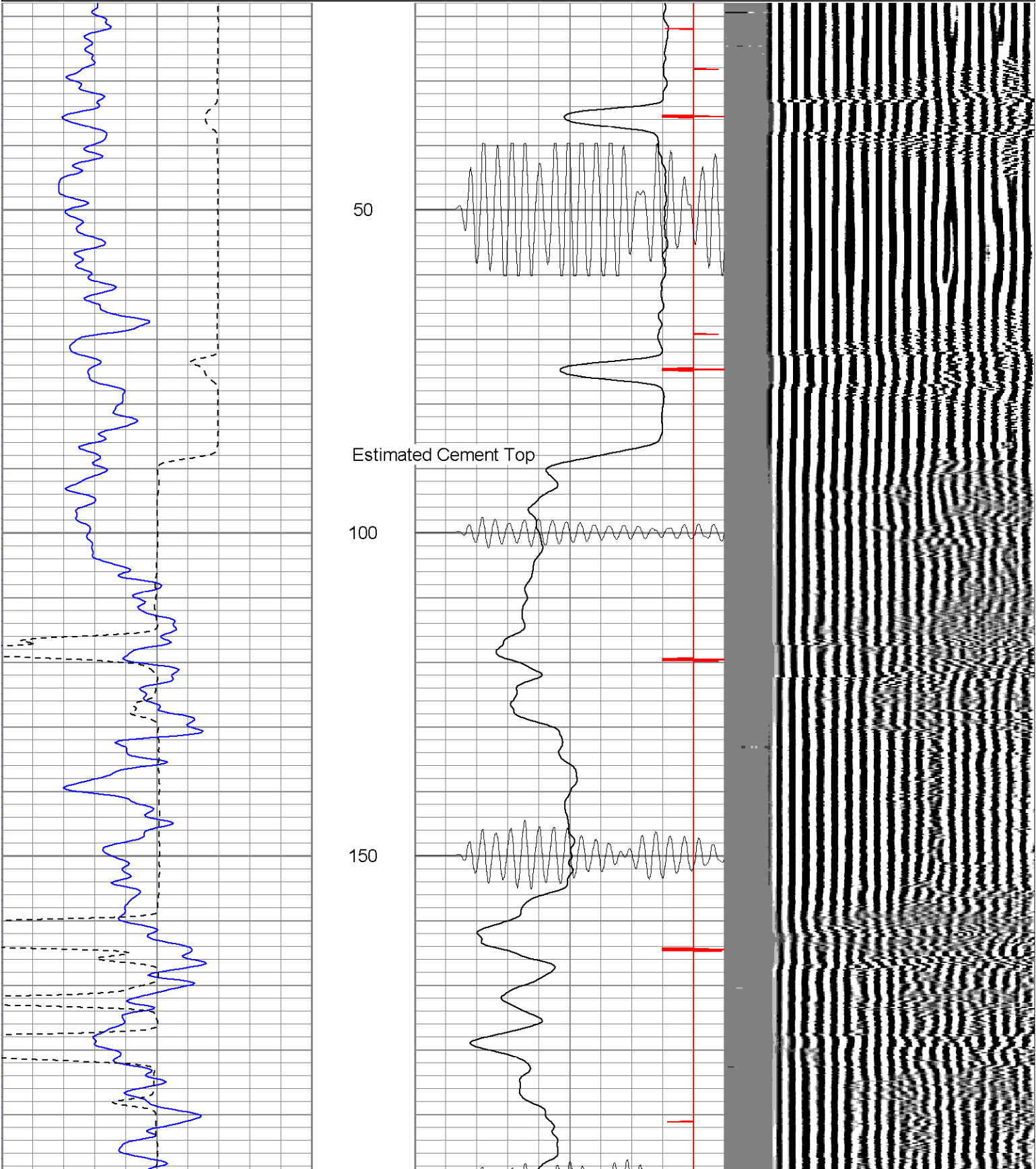


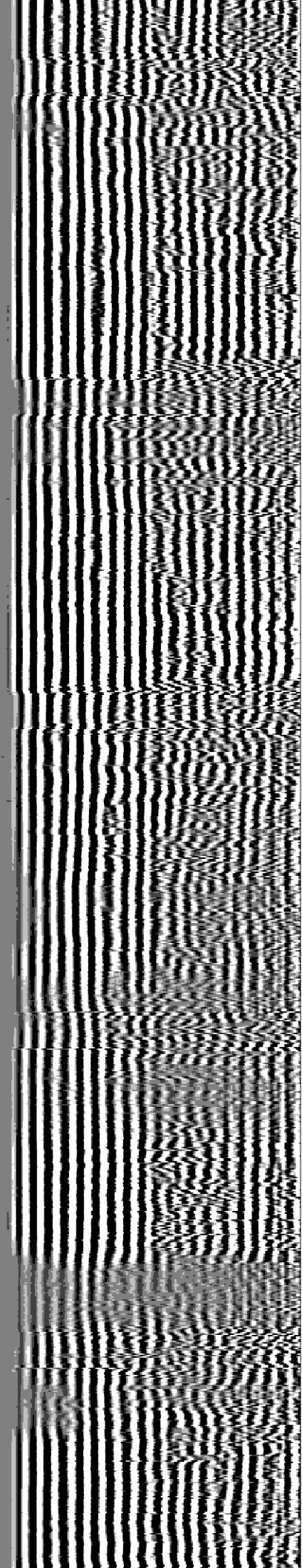
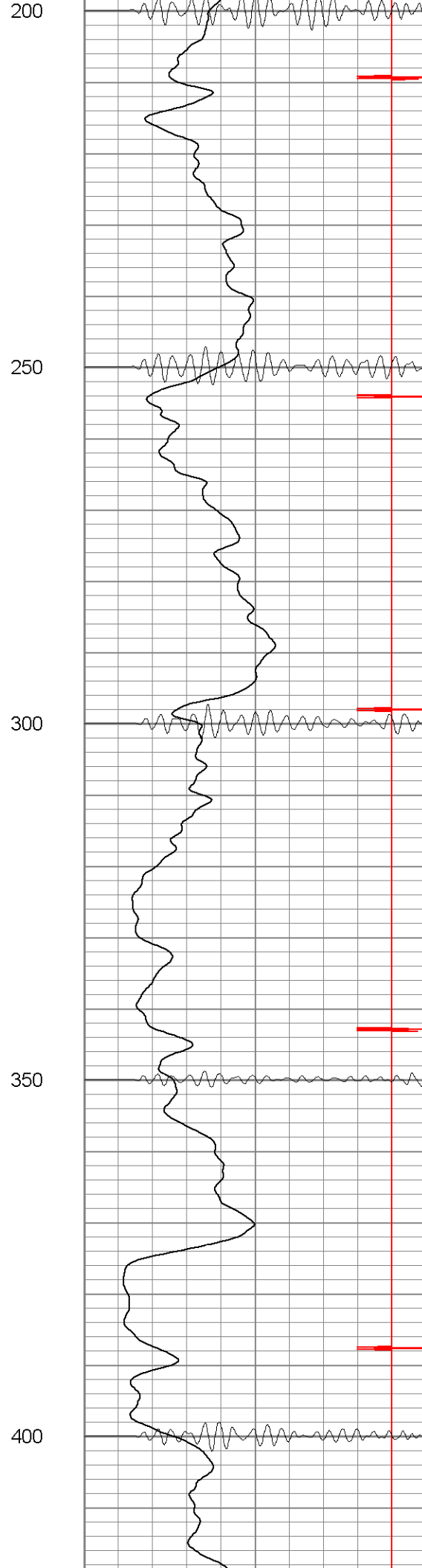
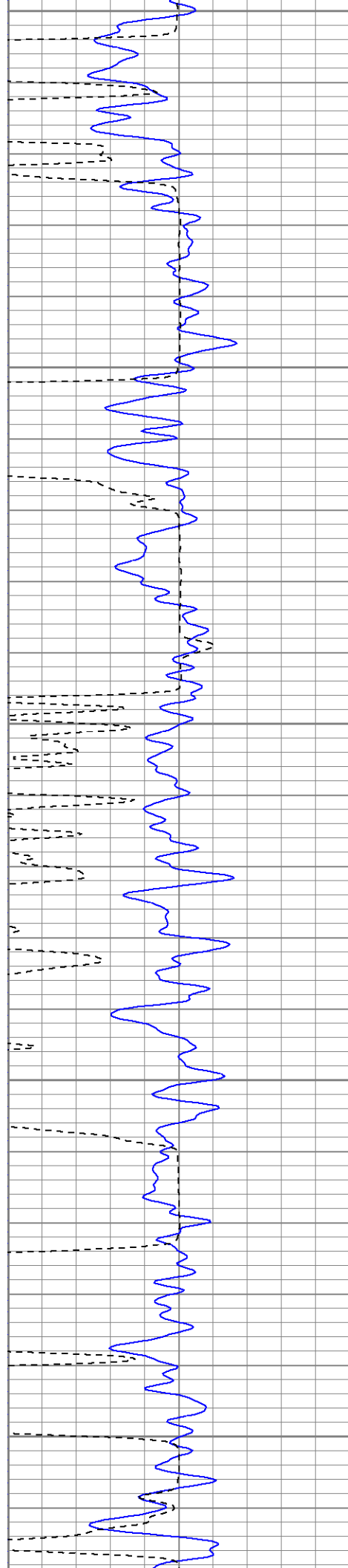
Black Lick, Pa.
Mercer, Pa.
Wooster, Oh.
Cleveland, Ok.
Trinidad, Co.

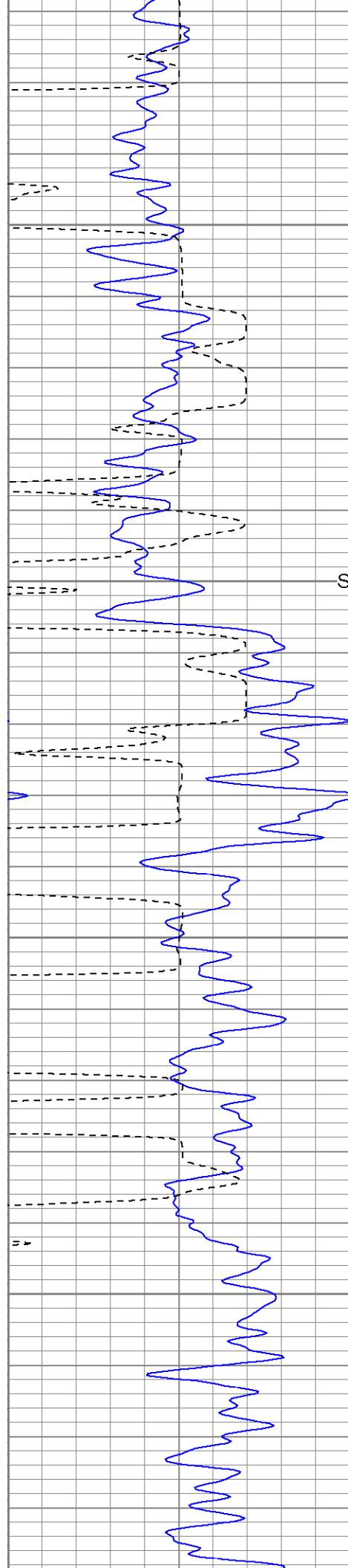
Main Pass (1000PSI)

Database File: ac311032607b.db
Dataset Pathname: pass2
Presentation Format: cblrt
Dataset Creation: Mon Mar 26 11:17:10 2007 by Log Open-Cased 060407
Charted by: Depth in Feet scaled 1:240

0	GR (GAPI)	200	0	AMP3 (mV)	100	200	Variable Density	1200
200	GR (GAPI)	400	18	CCL	-2			
400	TT3 (usec)	200	200	CBL5	1200			





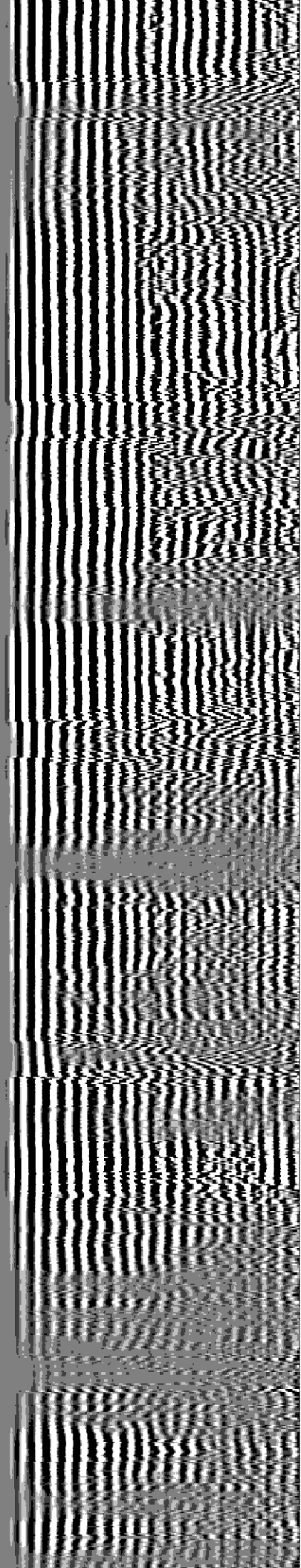
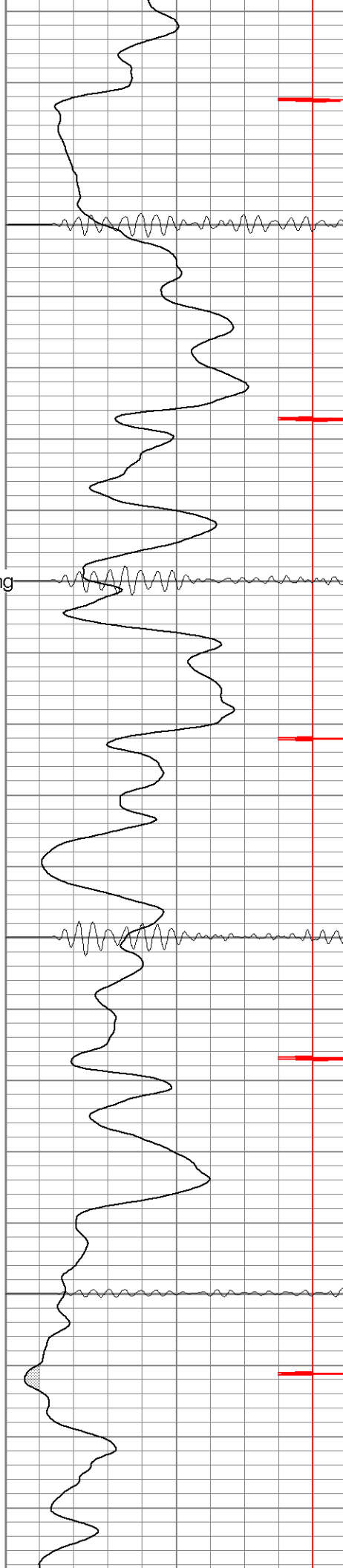


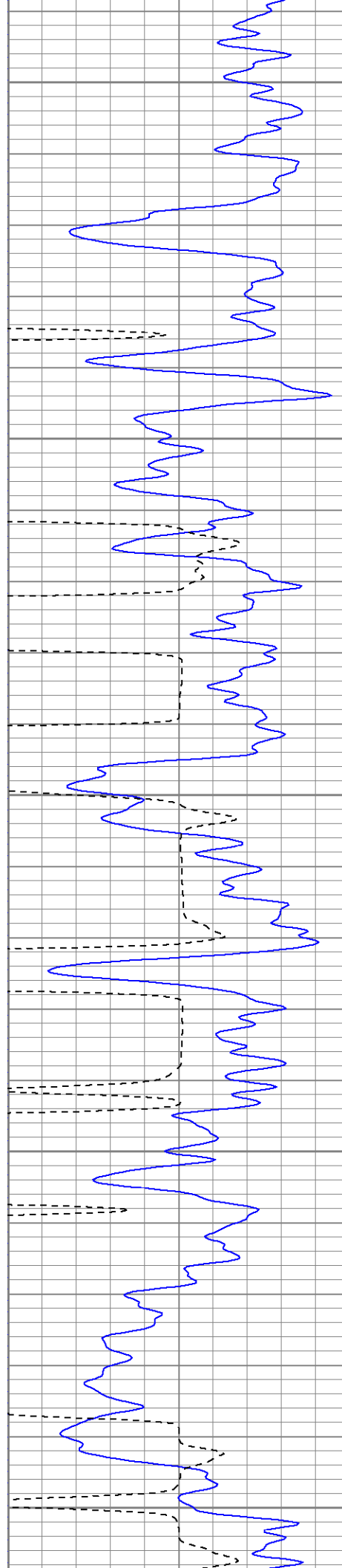
Surface Casing

450

550

600





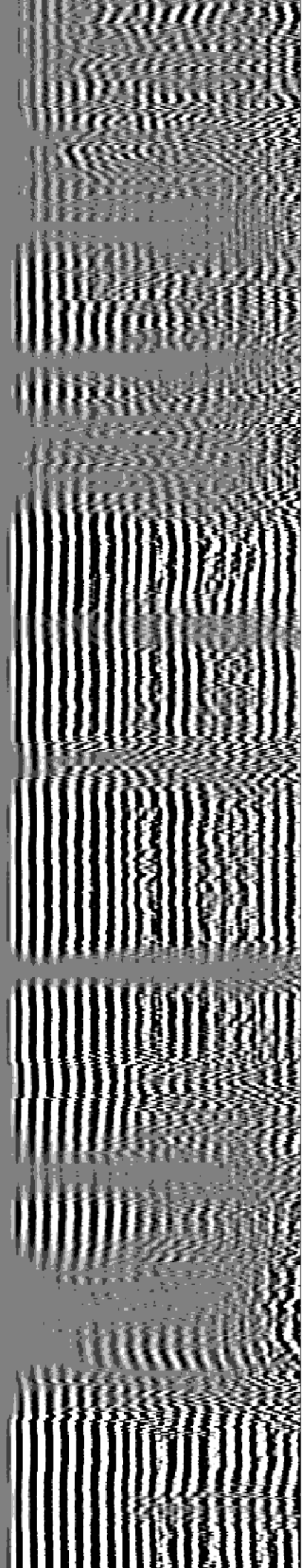
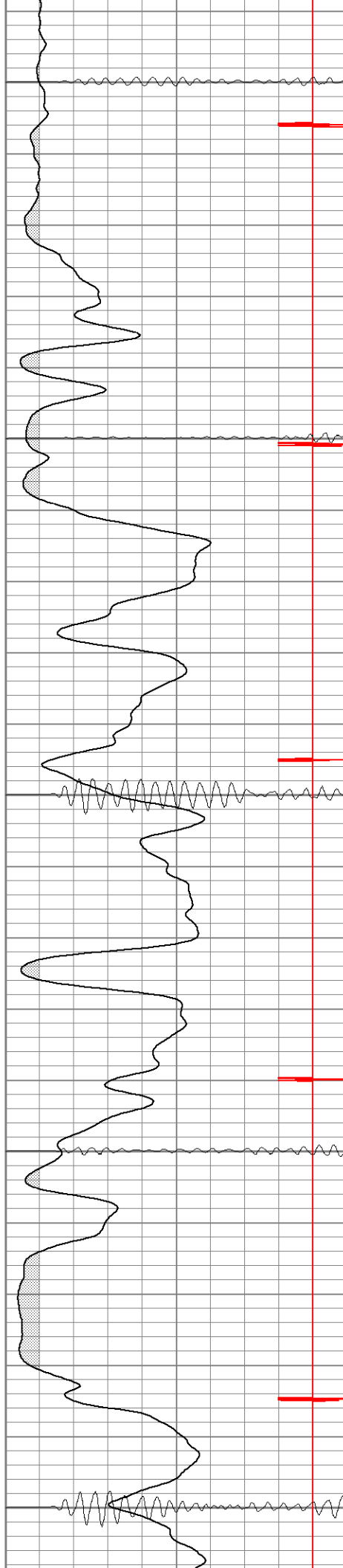
650

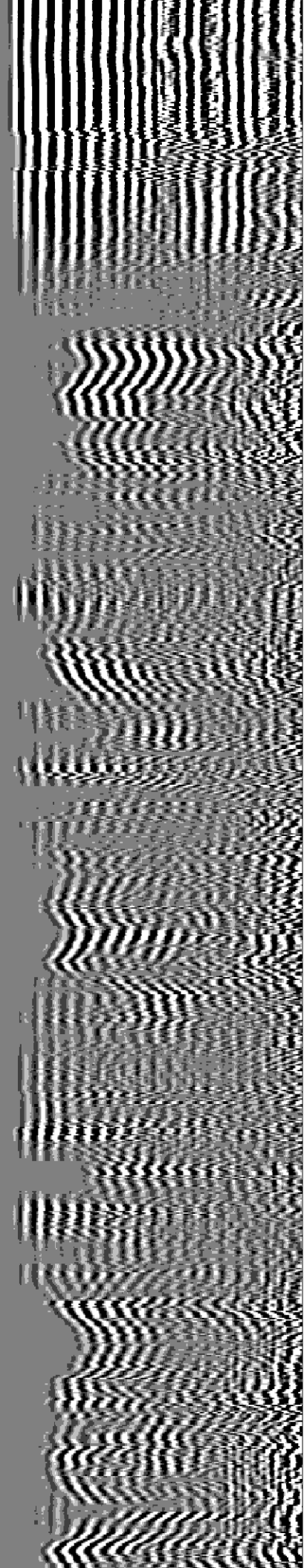
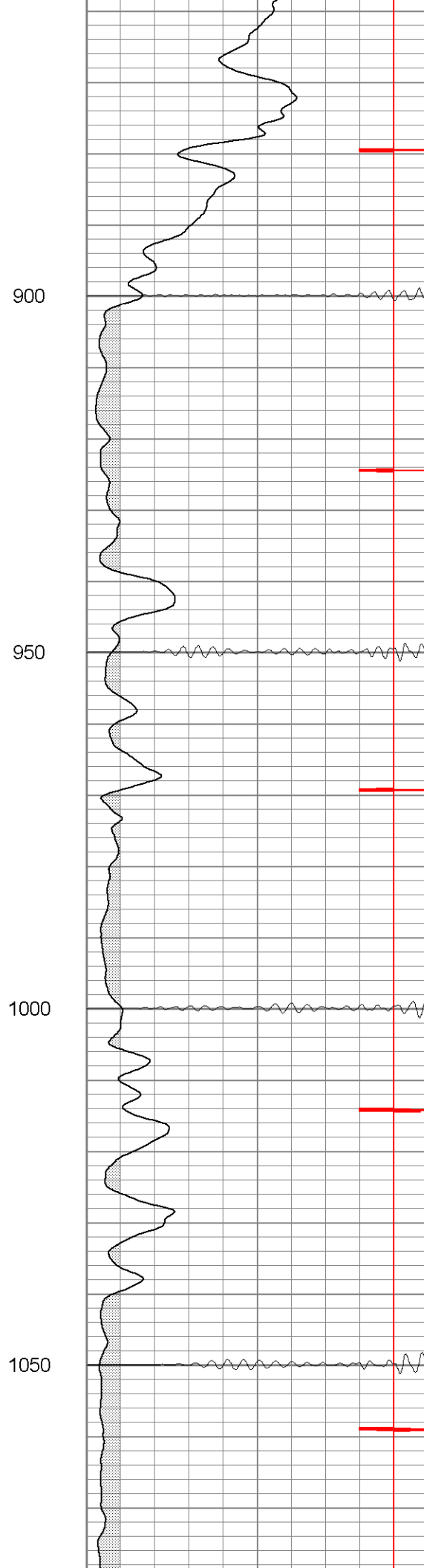
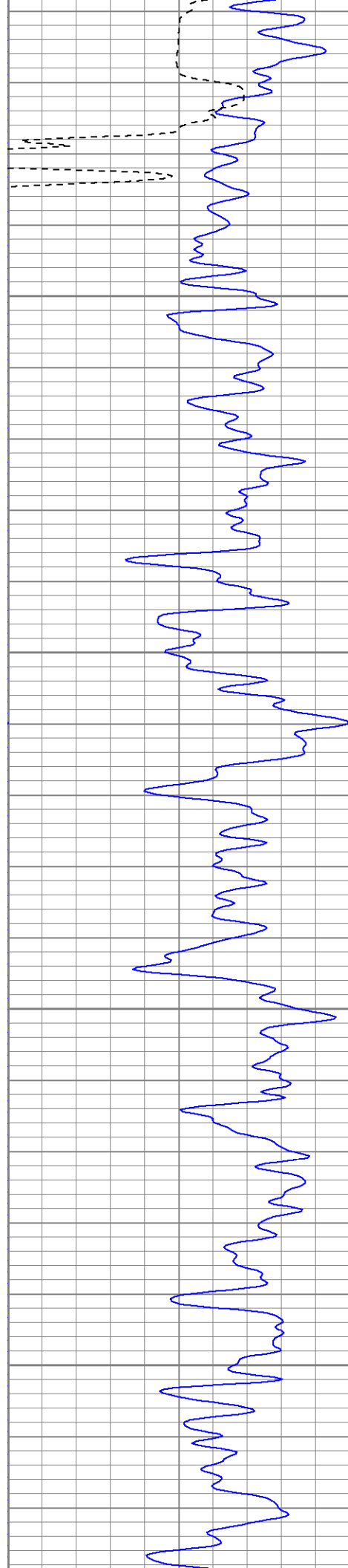
700

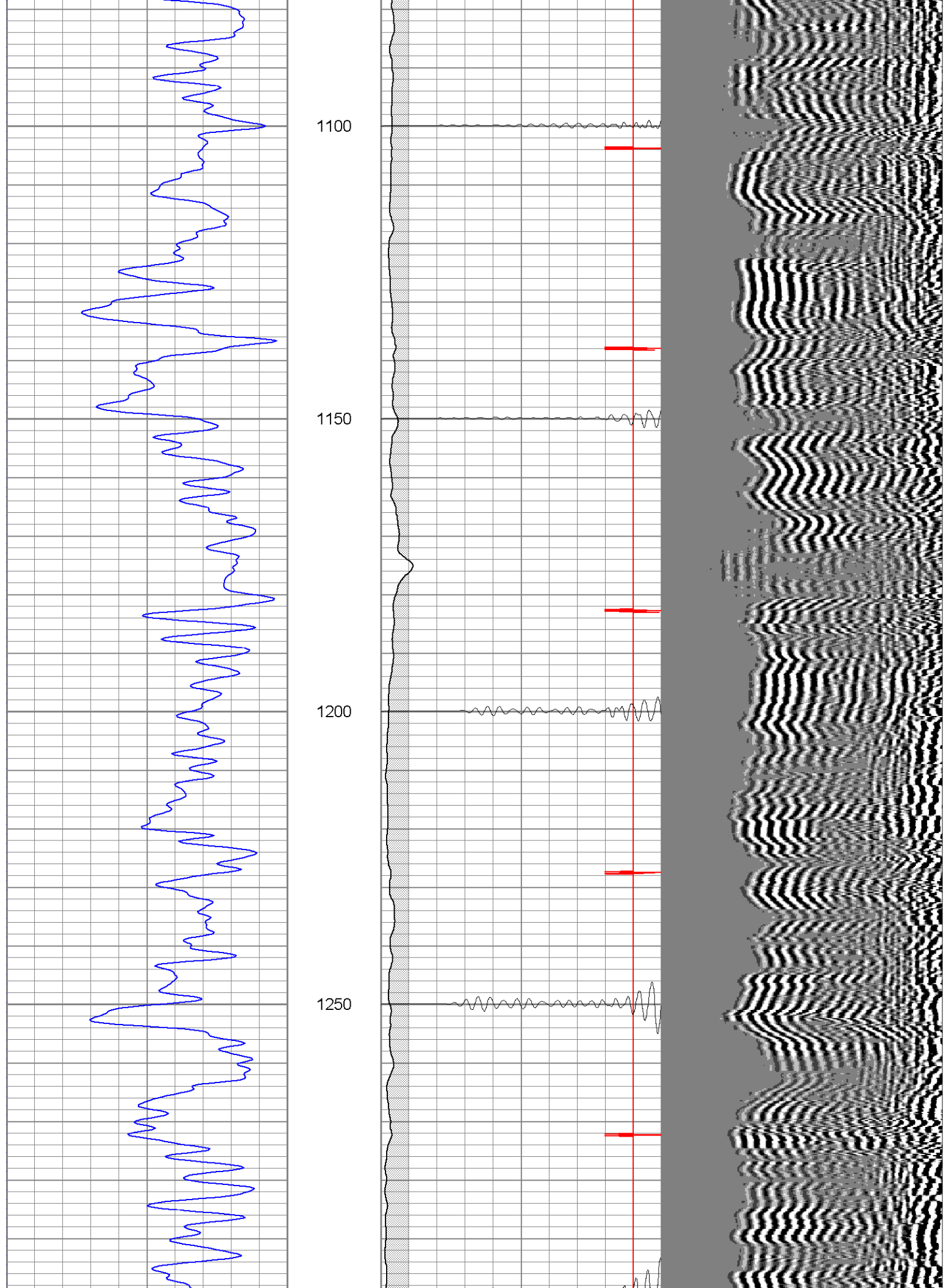
750

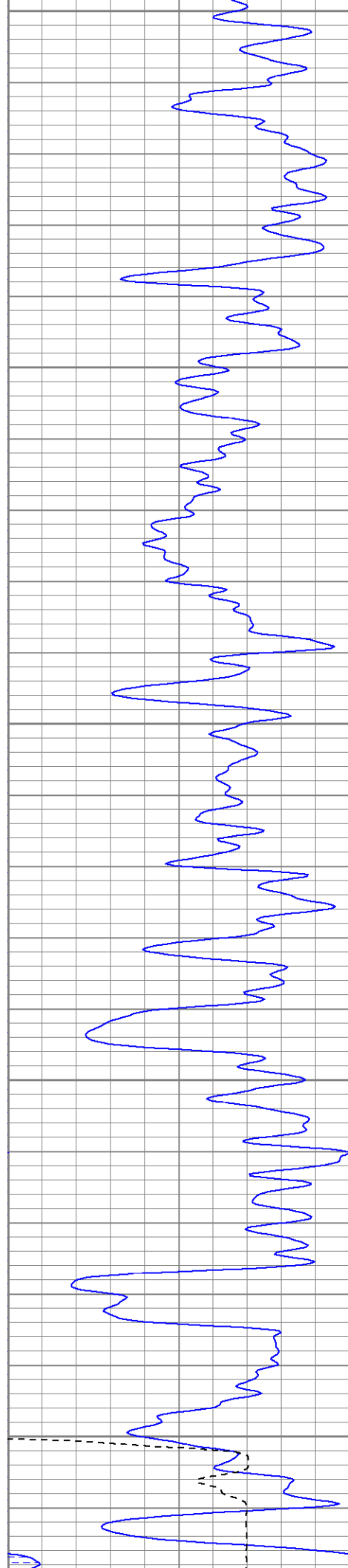
800

850









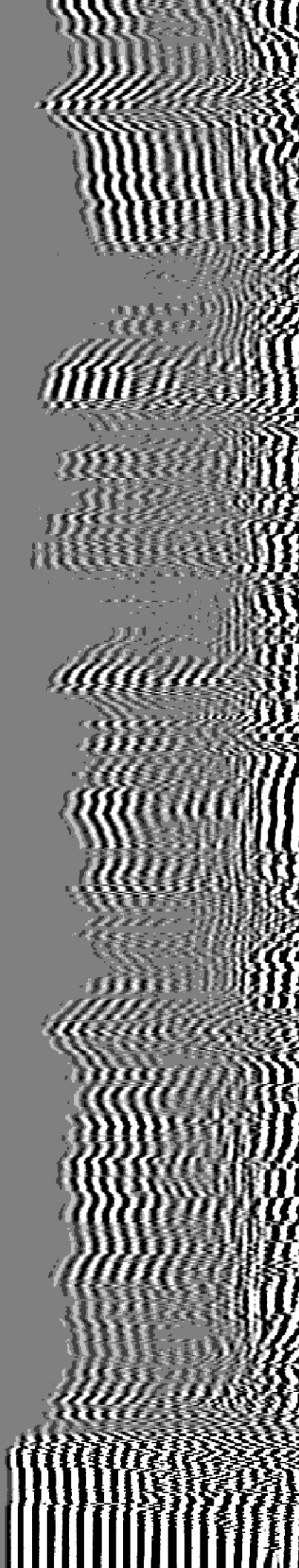
1300

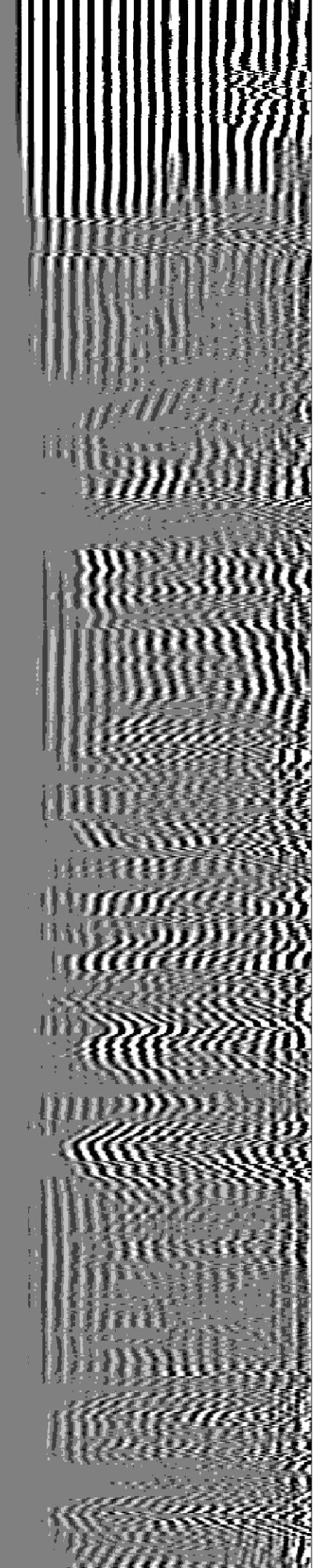
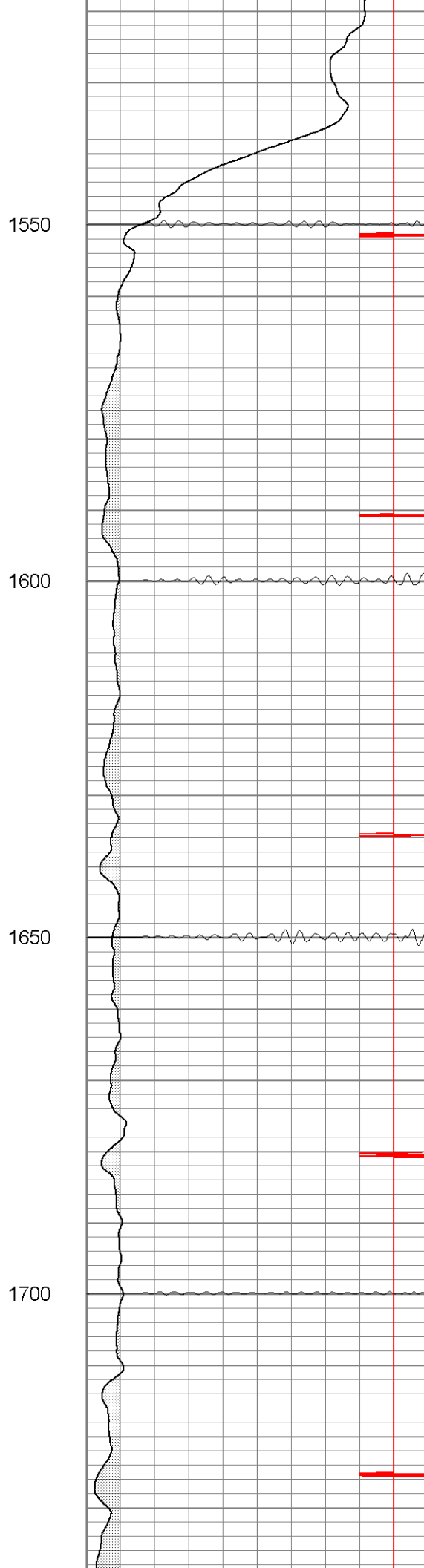
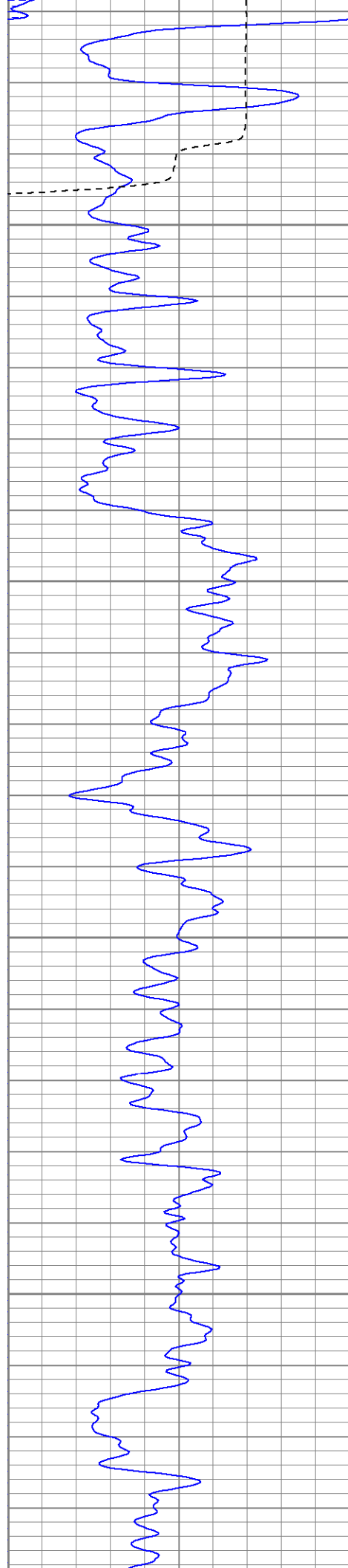
1350

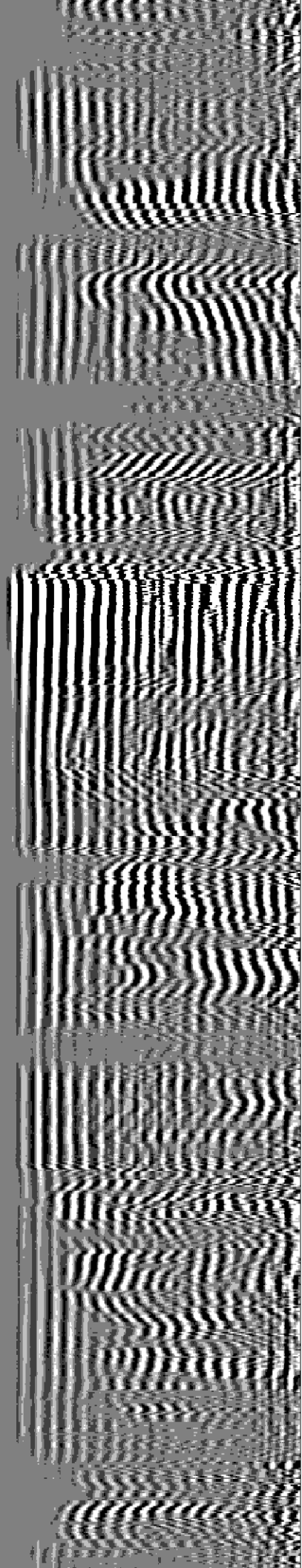
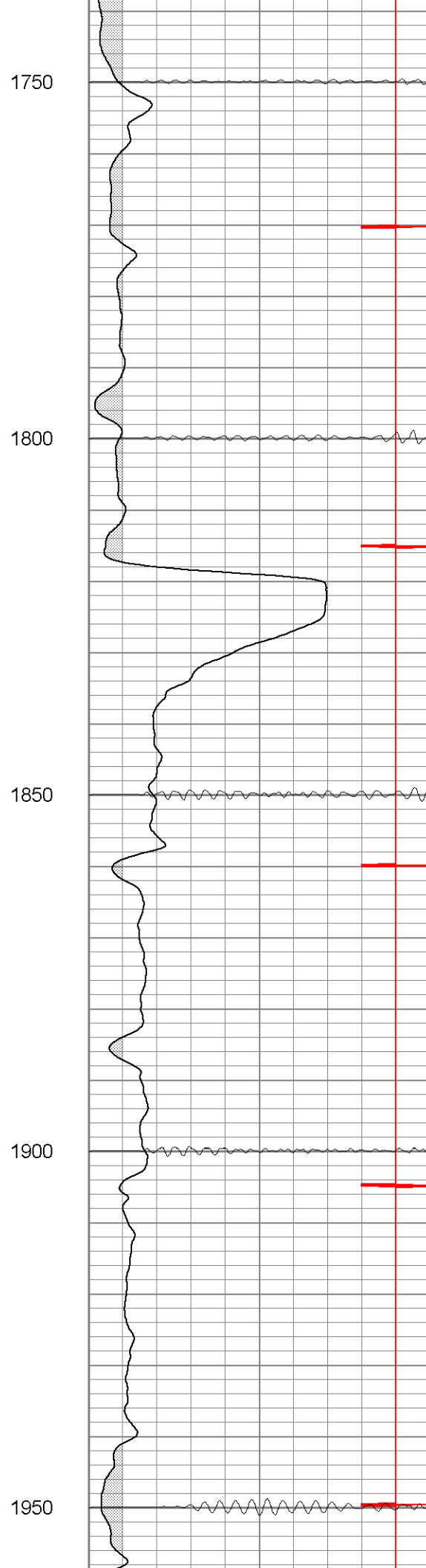
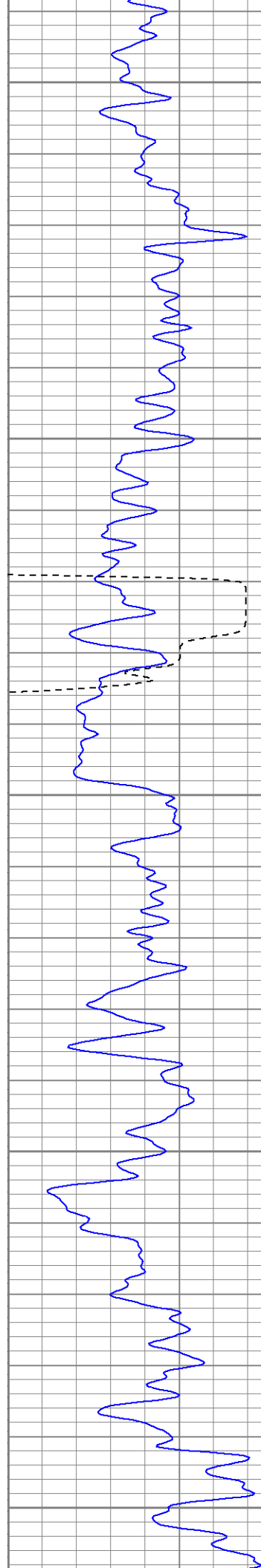
1400

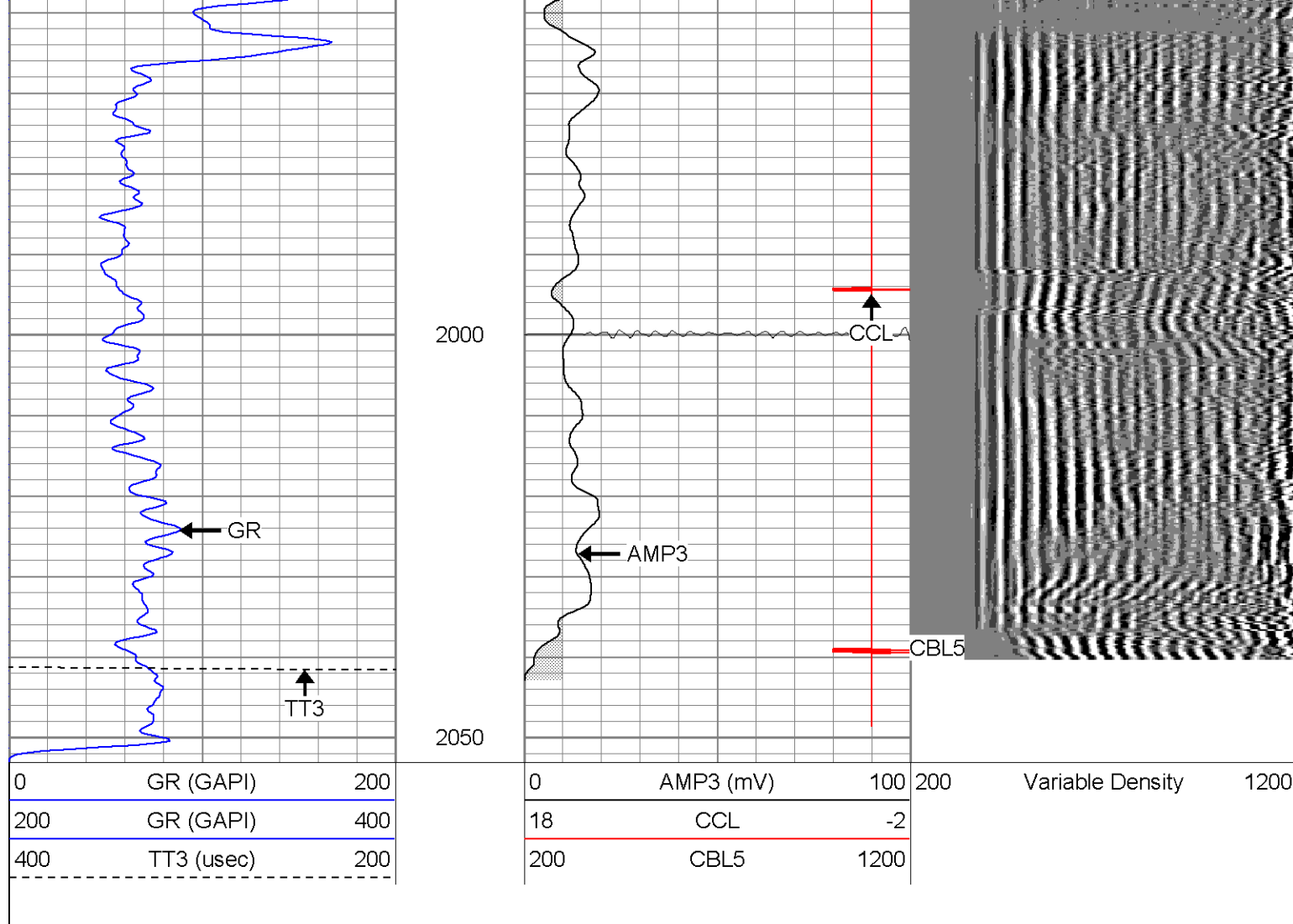
1450

1500







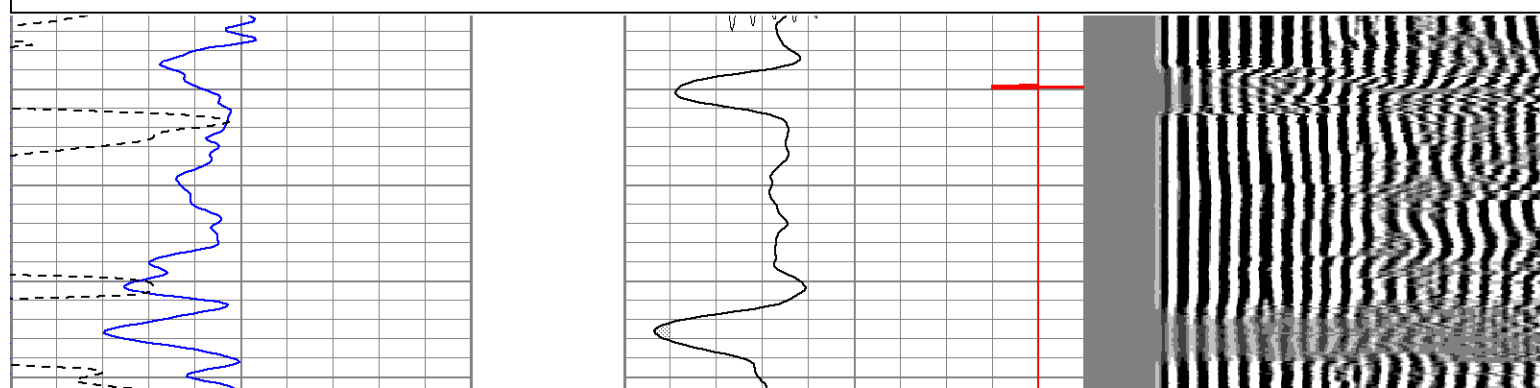
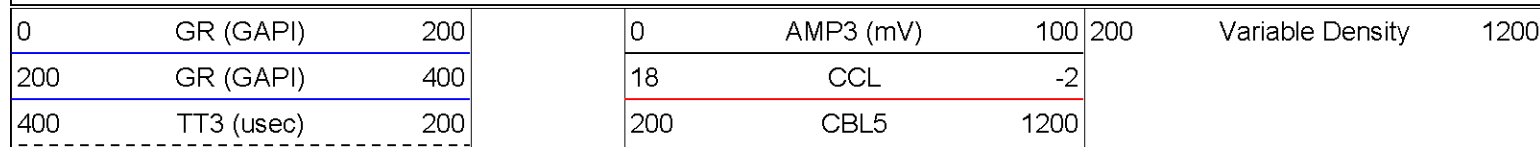


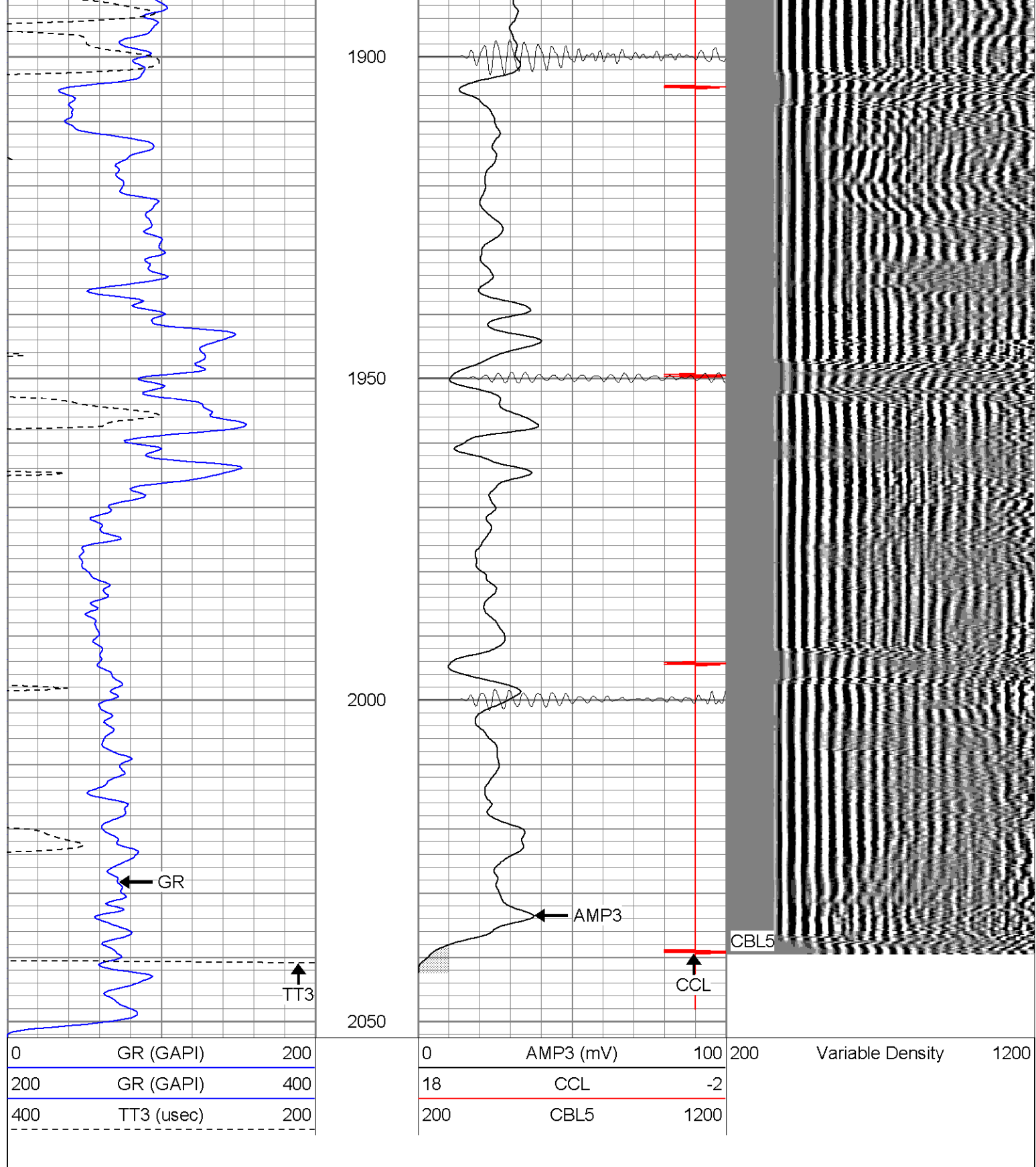
SUPERIOR

Black Lick, Pa.
Mercer, Pa.
Wooster, Oh.
Cleveland, Ok.
Trinidad, Co.

Repeat Section (0PSI)

Database File: ac311032607b.db
Dataset Pathname: pass1
Presentation Format: cblrt
Dataset Creation: Mon Mar 26 10:52:53 2007 by Log Open-Cased 060407
Charted by: Depth in Feet scaled 1:240





Calibration Report

Database File: ac311032607b.db
Dataset Pathname: pass1
Dataset Creation: Mon Mar 26 10:52:53 2007 by Log Open-Cased 060407

Gamma Ray Calibration Report

Serial Number: Titan2.75
Tool Model: 2.75
Performed: Wed Mar 07 08:33:06 2007

Calibrator Value:	200.0	GAPI
Background Reading:	40.0	cps
Calibrator Reading:	240.0	cps
Sensitivity:	1.1000	GAPI/cps

Cement Bond Log Calibration Report

Serial Number:	Titan4		
Tool Model:	4		
Performed:	Thu Mar 08 08:32:41 2007		
Depth:	1054.62	ft	
Casing Diameter:	5.5	in	
	3' Spacing	5' Spacing	
Signal Zero:	0	1	mV
Calibrated Amplitude:	85	85	mV
Reading at Signal Zero:	0.00161133	0.0143555	V
Reading in Free Pipe:	1.27	1.65081	V
Gain:	67.0142	51.3306	
Offset:	0.25	0.263125	

Sensor	Offset (ft)	Schematic	Description	Len (ft)	OD (in)	Wt (lb)
CHD	20.38		CHD-None (0)	0.75	1.50	5.00
CENT	19.63		CENT-X (2)	3.00	1.69	25.00
WVF5	12.82		CBL-4 (Titan4)	8.15	2.25	110.00
WVF3	11.82					
CENT	8.48		CENT-X (1)	3.00	1.69	25.00
CCL	4.27		CCL-2.75 (Titan2.75)	1.71	2.75	15.00
GR	1.42		GR-2.75 (Titan2.75) Two Point	3.77	2.75	25.00
Dataset: ac311032607b.db: field/well/run1/pass1 Total Length: 20.38 ft Total Weight: 205.00 lb O.D. 2.75 in						