

**Patterson**

**SINGLE  
INDUCTION  
LOG**

Company	Pioneer Natural Resources	Company	Pioneer Natural Resources
Well	Jamabean 42-14	Well	Jamabean 42-14
Field	Purgatoire River	Field	Purgatoire River
County	Las Animas	County	Las Animas
State	Colorado	State	Colorado
Location:	API # : 05 071 08543 00 1937' FNL & 571' FEL	Other Services CDL NEUTRON	
Permanent Datum	SEC 14 TWP 33S RGE 66W	Elevation	
Log Measured From	Ground Level	K.B. 7294'	
Drilling Measured From	Kelly Bushing 4' Above G.L. Kelly Bushing	D.F. -----	
		G.L. 7290'	
Date	10-05-05		
Run Number	One		
Depth Driller	1900'		
Depth Logger	1908'		
Bottom Logged Interval	1906'		
Top Log Interval	Surface Casing		
Casing Driller	8 5/8" @ 487'		
Casing Logger	486'		
Bit Size	7 7/8"		
Type Fluid in Hole	Water		
Density / Viscosity	///		
pH / Fluid Loss	///		
Source of Sample	///		
Rm @ Meas. Temp	///		
Rmf @ Meas. Temp	///		
Rmc @ Meas. Temp	///		
Source of Rmf / Rmc	///		
Rm @ BHT	///		
Time Circulation Stopped	5:30 A.M.		
Time Logger on Bottom	10:00 A.M.		
Maximum Recorded Temperature	98 DEG F		
Equipment Number	T720		
Location	Trinidad		
Recorded By	M. Norton		
Witnessed By	Mr. Jack Wiseman		

<<< Fold Here >>>

All interpretations are opinions based on inferences from electrical or other measurements and we cannot and do not guarantee the accuracy or correctness of any interpretation, and we shall not, except in the case of gross or willful negligence on our part, be liable or responsible for any loss, costs, damages, or expenses incurred or sustained by anyone resulting from any interpretation made by any of our officers, agents or employees. These interpretations are also subject to our general terms and conditions set out in our current Price Schedule.

**Comments**

Well Directions:  
Turn Right Off Highway Twelve Just Past Segundo To Primero Ranches(gate combo 1397),  
Stay On Main Road Past Compressor, At T Turn Right,  
Second Right Past Switch Back To Location.

**Patterson**

**Main Pass**

Database File: jamabeau.db  
Dataset Pathname: pass2.1  
Presentation Format: iel  
Dataset Creation: Wed Oct 05 11:52:05 2005 by Calc Warrior 7.0 STD Ope  
Charted by: Depth in Feet scaled 1:240

0	GR (GAPI)	200	0.2	DIR (Ohm-m)	2000
-100	SP (mV)	100	0.2	SN (Ohm-m)	2000

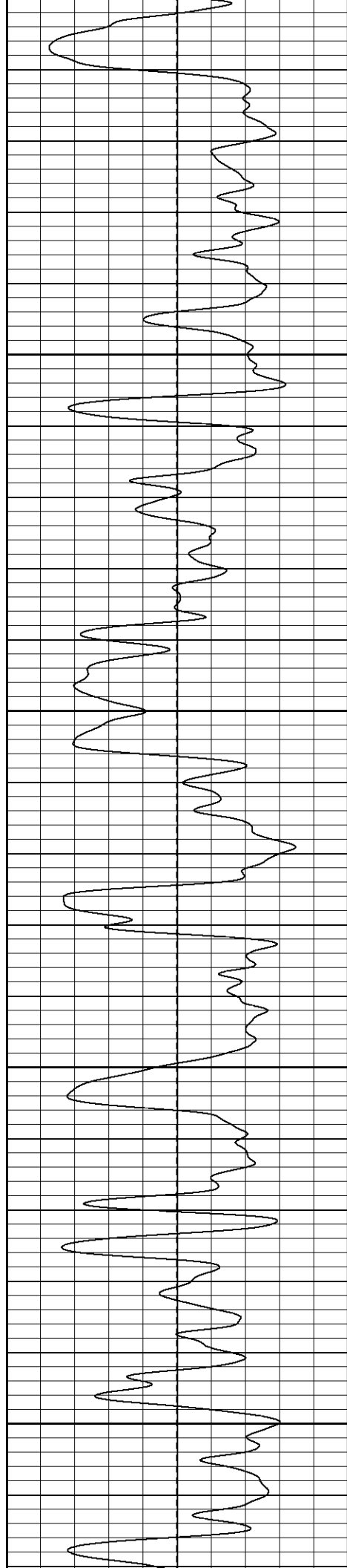
Surface Casing

500

550

600

650



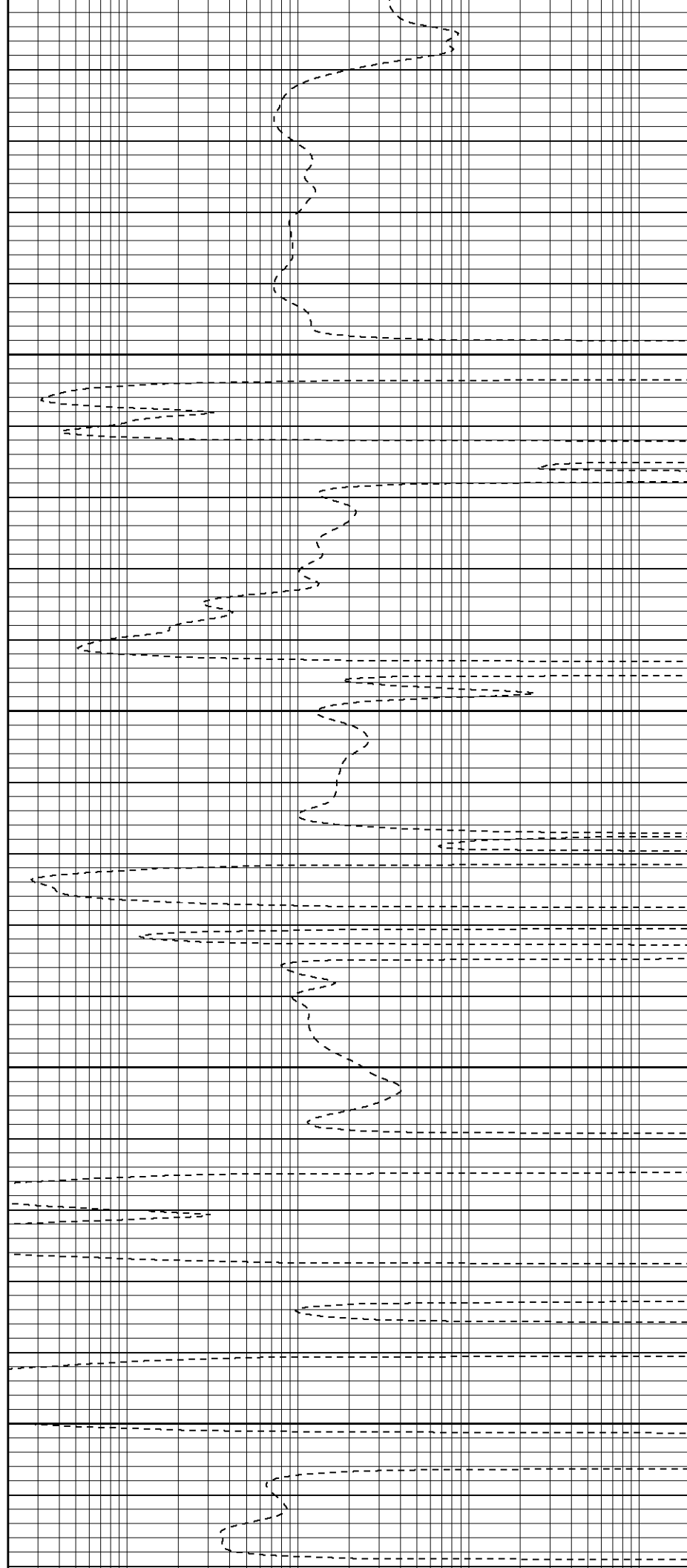
850

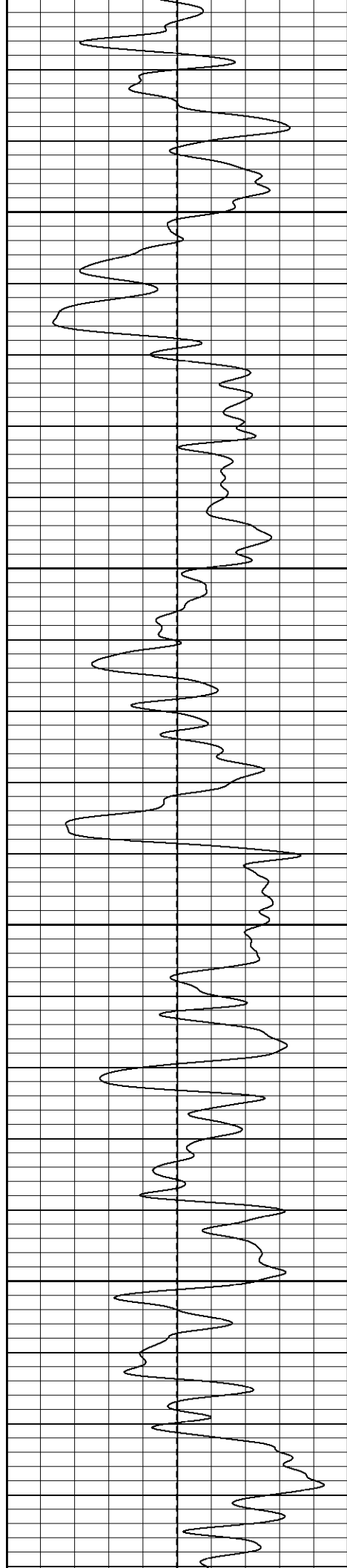
700

750

800

850



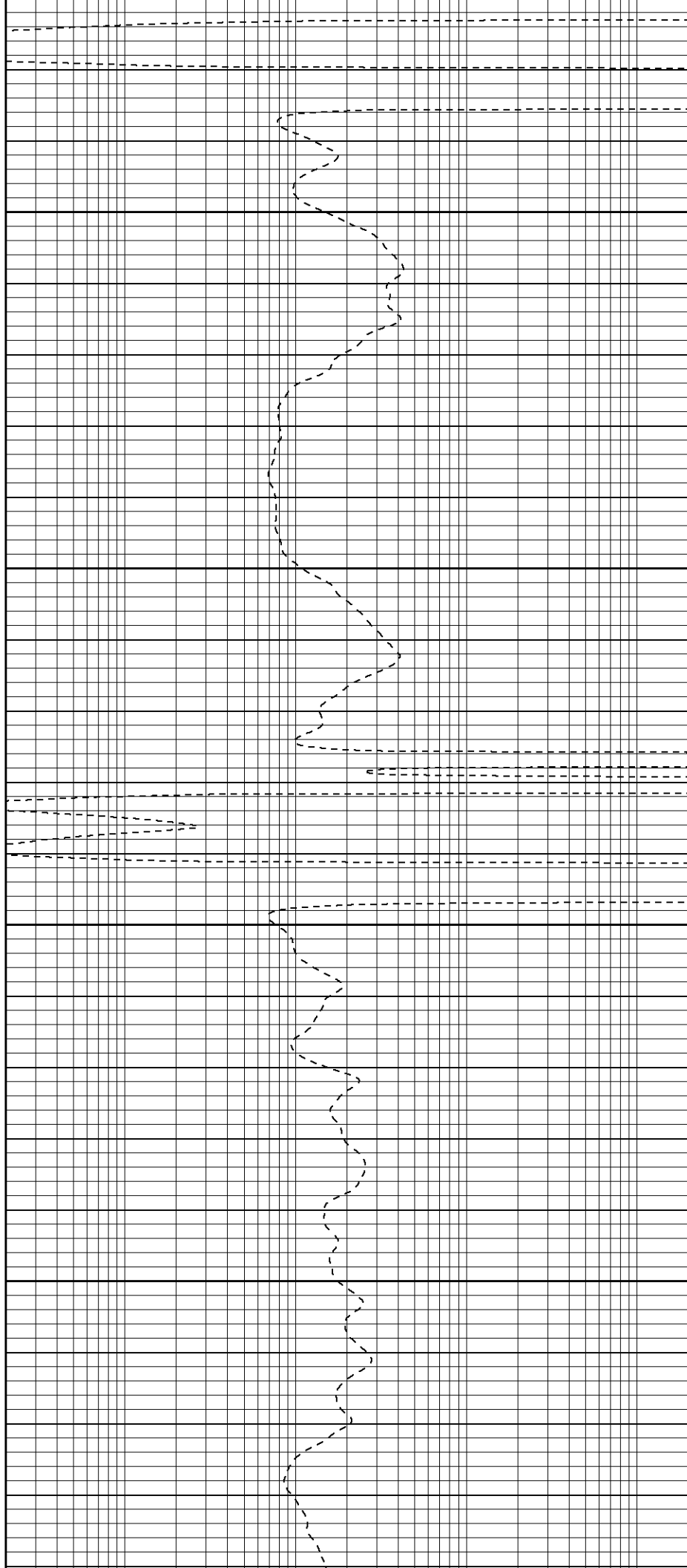


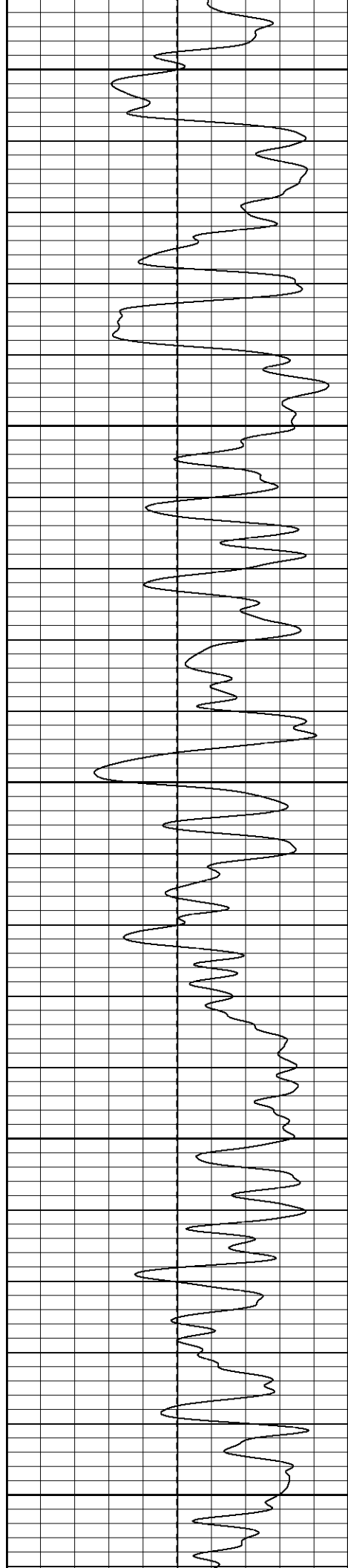
900

950

1000

1050





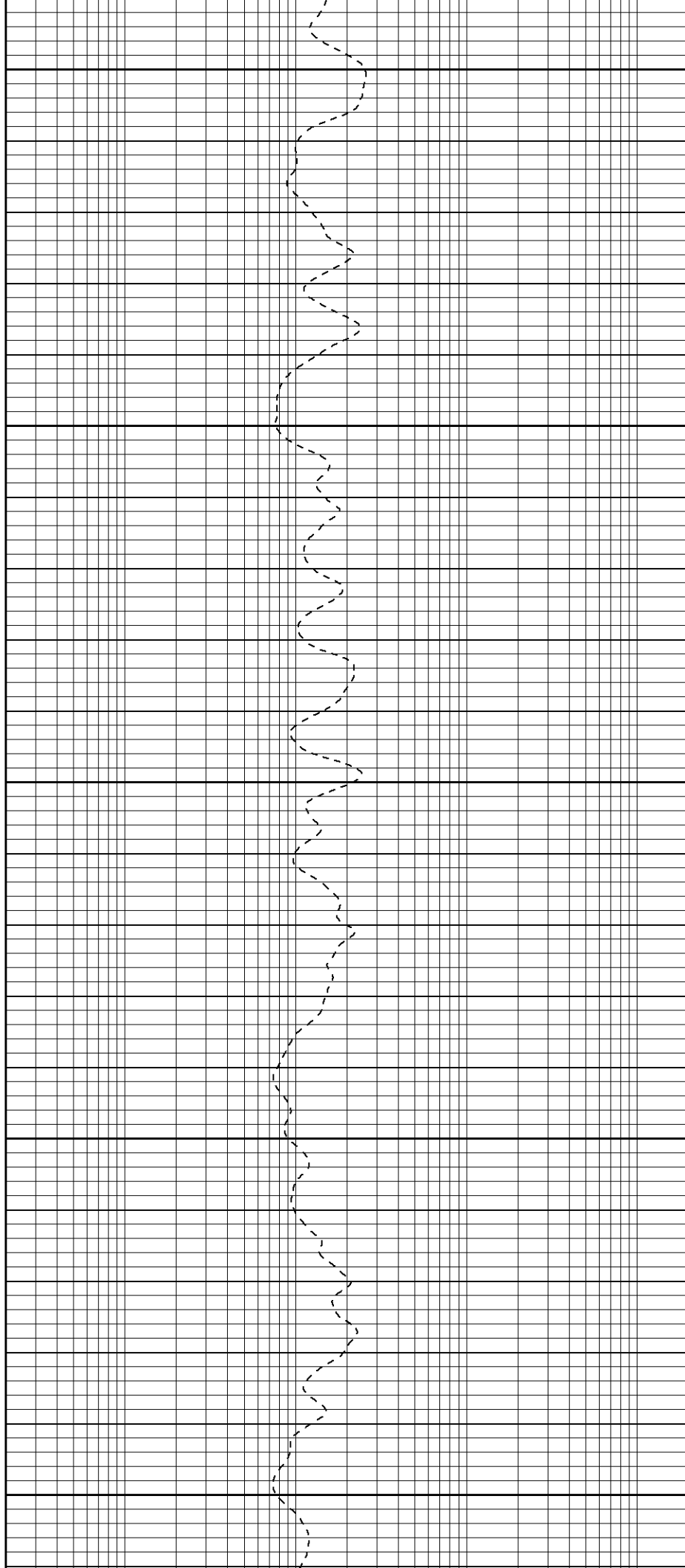
1100

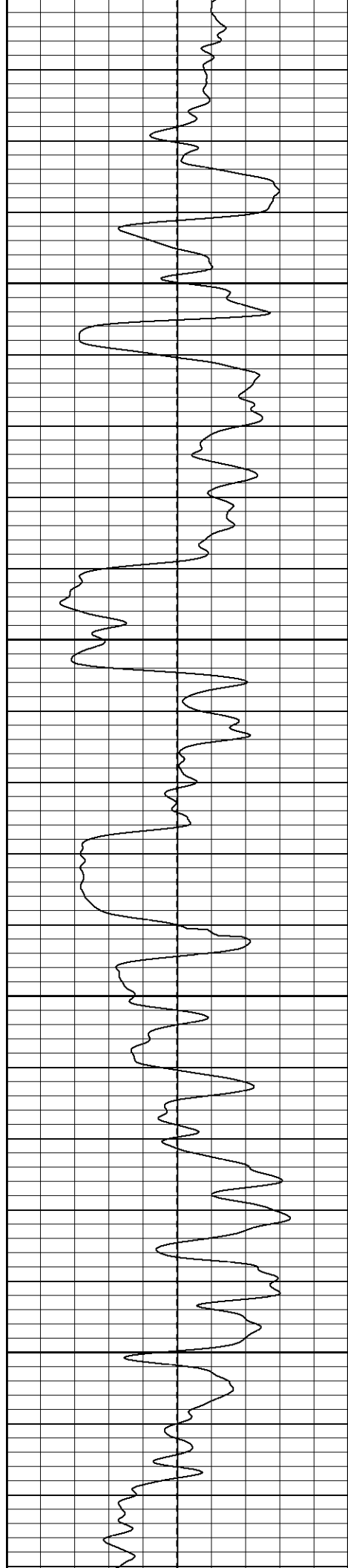
1150

1200

1250

1300



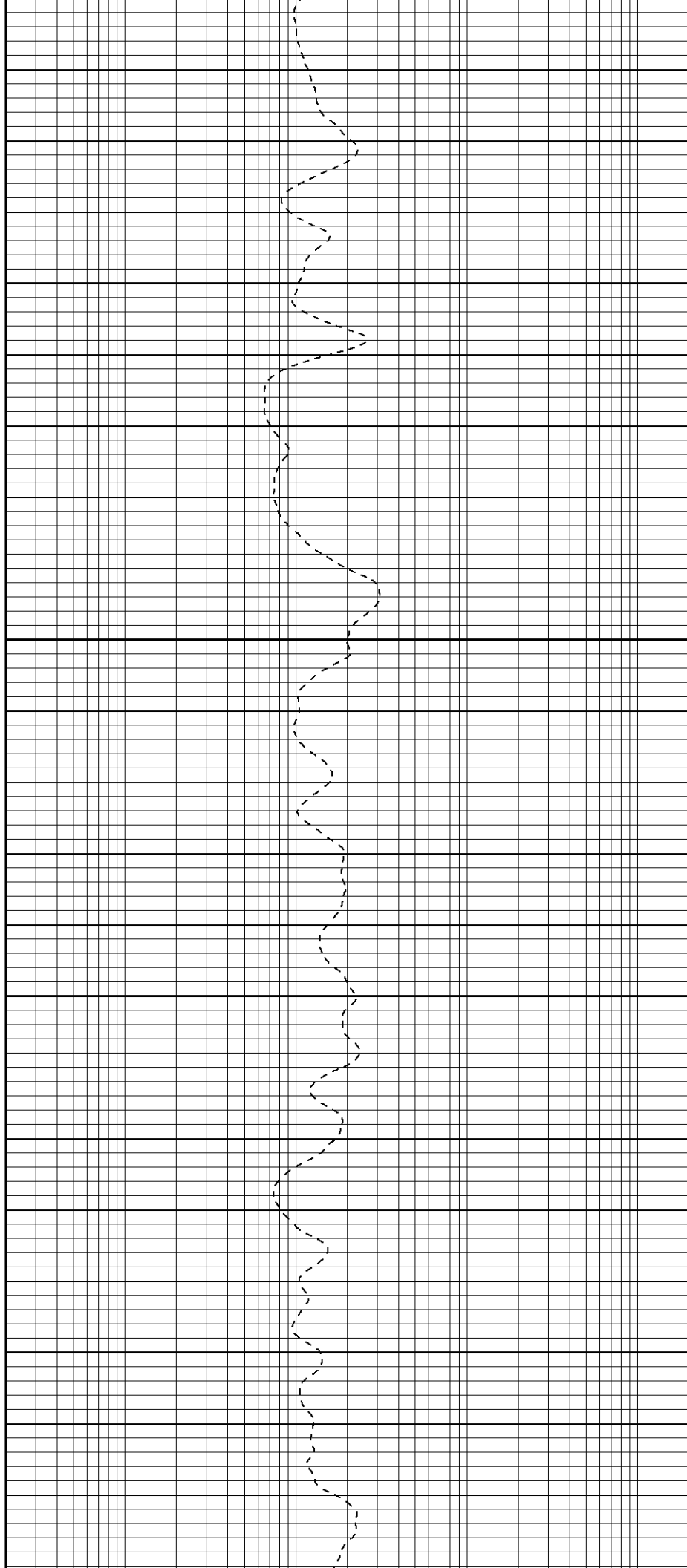


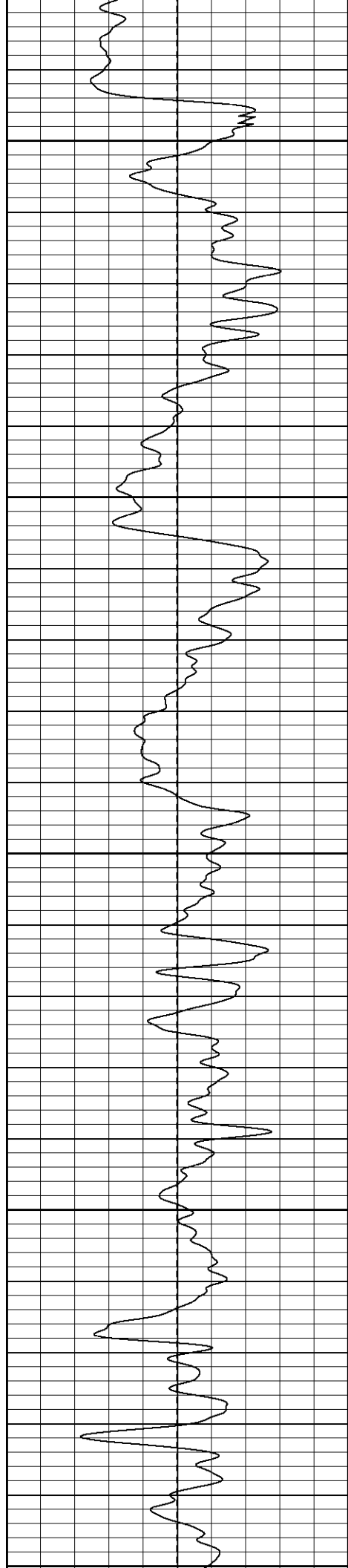
1350

1400

1450

1500





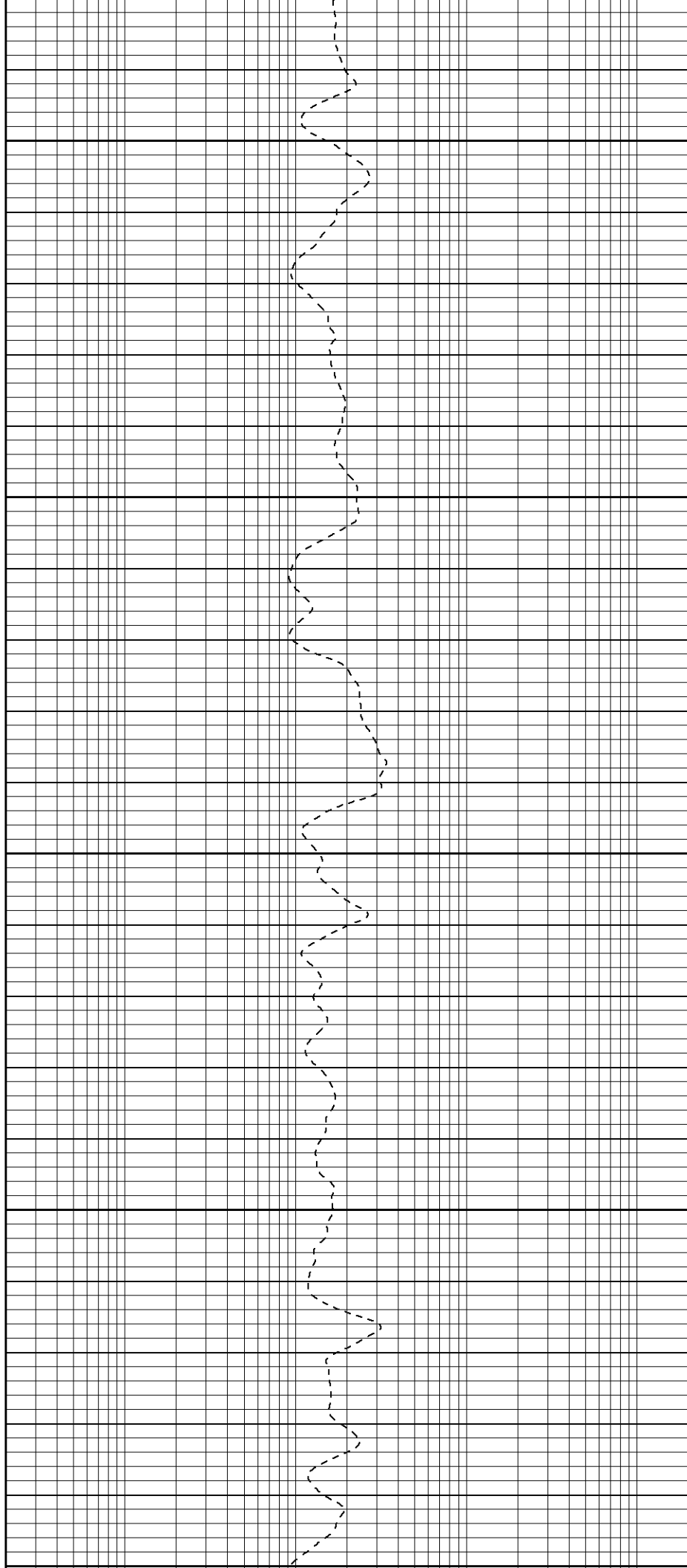
1550

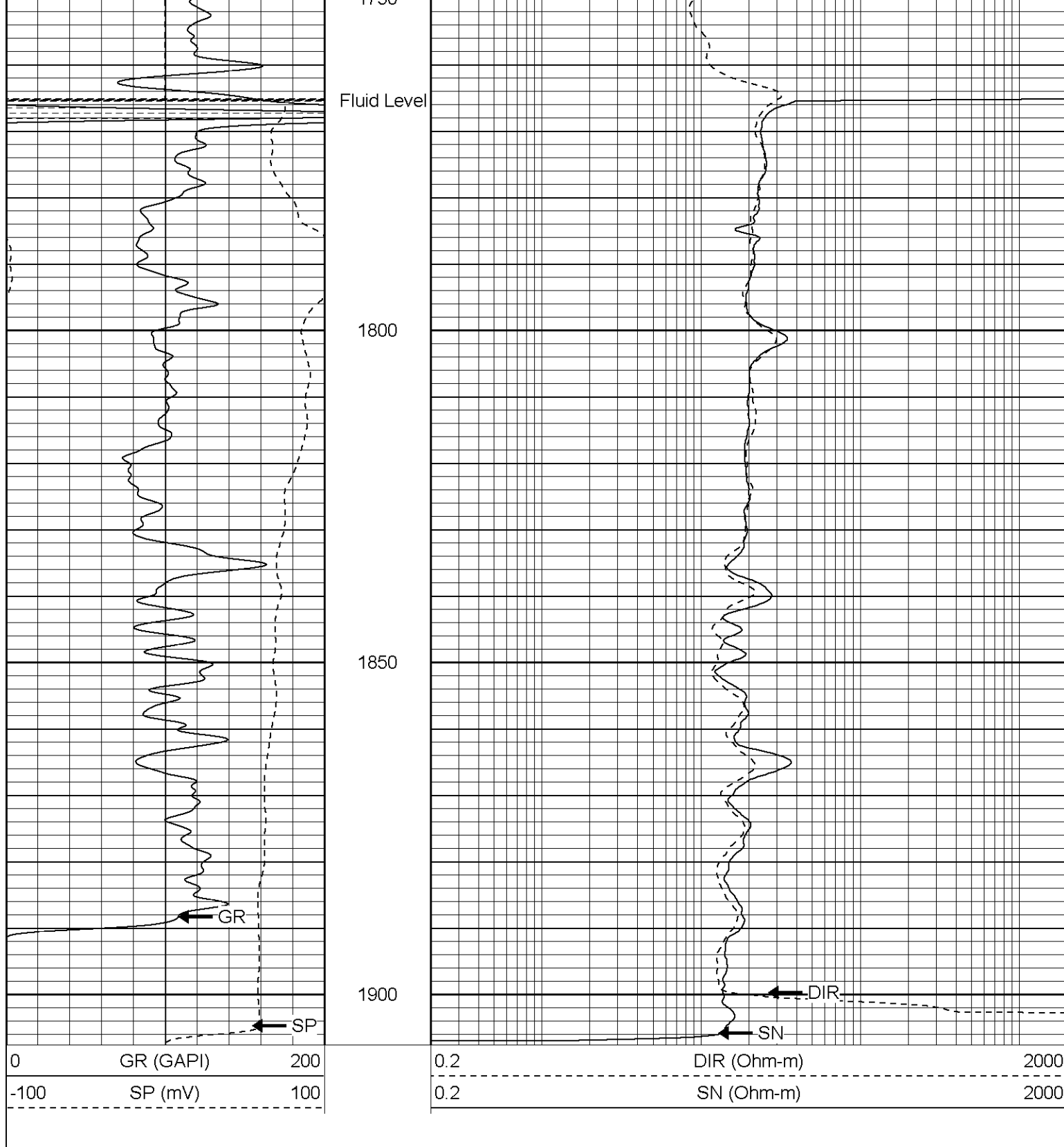
1600

1650

1700

1750





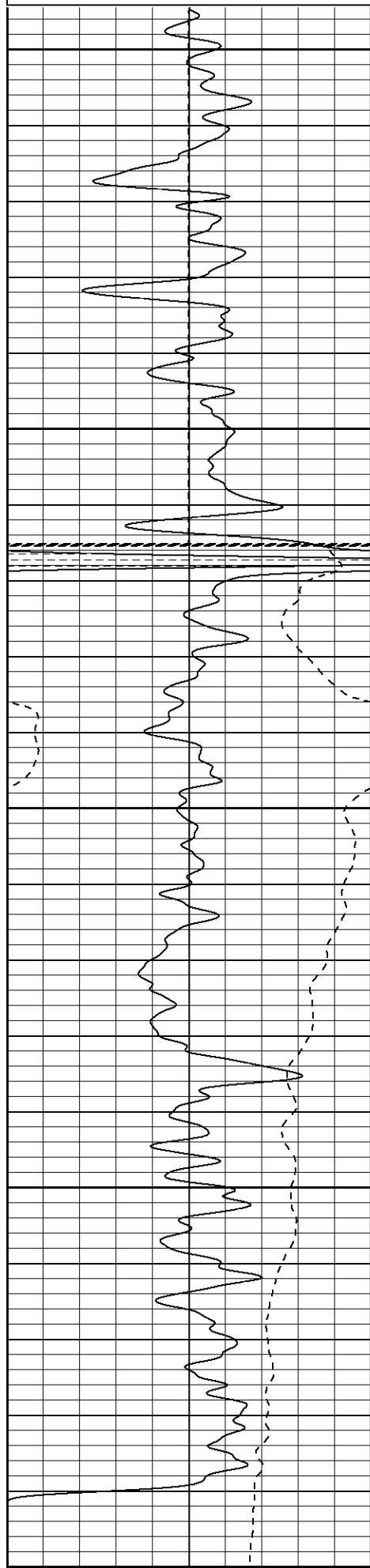
**Patterson**

**Repeat Pass**

Database File: jamabeau.db  
 Dataset Pathname: pass1.1  
 Presentation Format: iel  
 Dataset Creation: Wed Oct 05 11:50:57 2005 by Calc Warrior 7.0 STD Ope  
 Charted by: Depth in Feet scaled 1:240



0	GR (GAPI)	200
-100	SP (mV)	100



1700

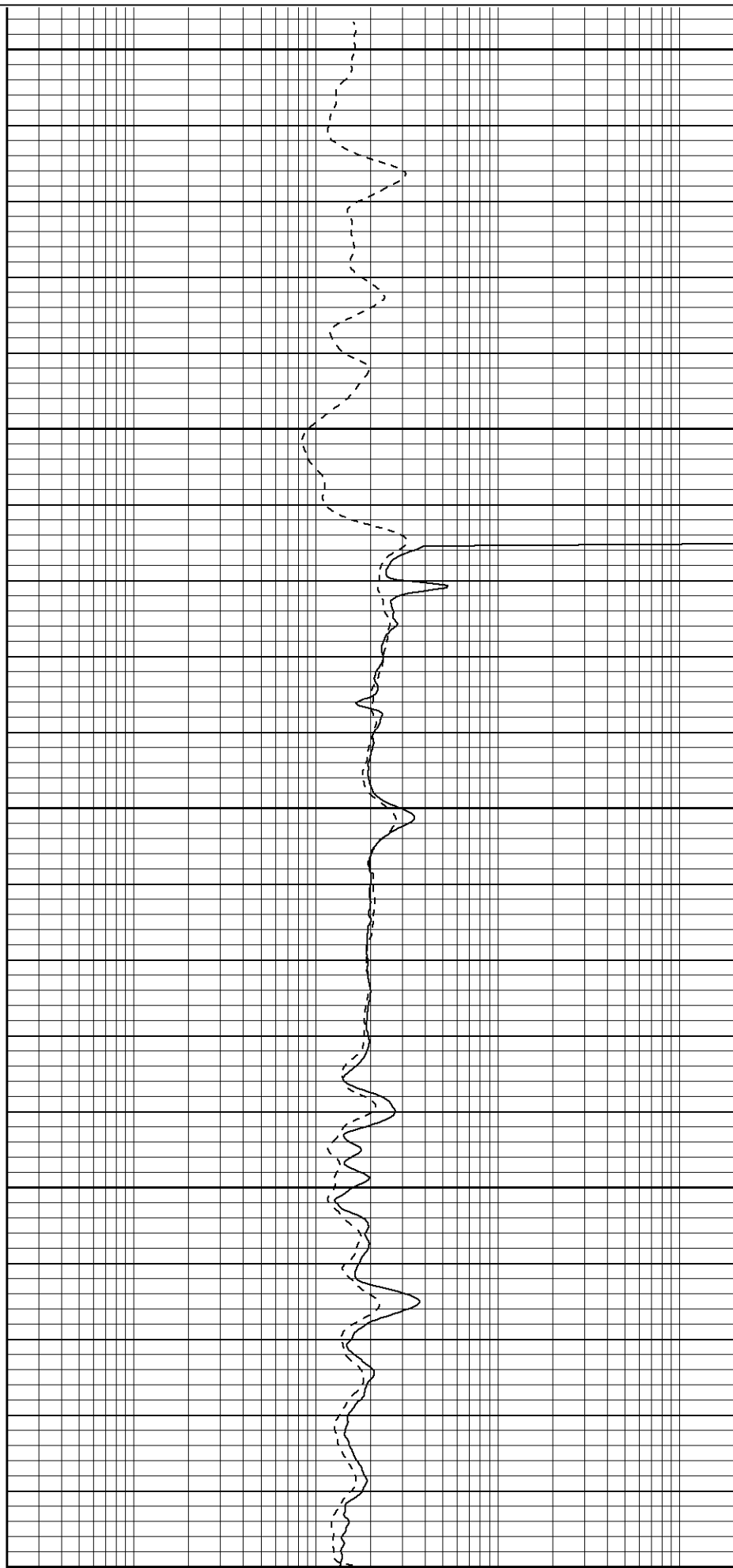
1750

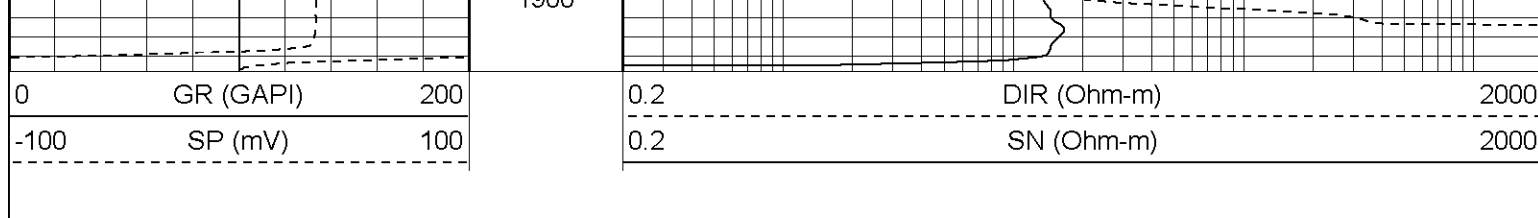
1800

1850

1900

0.2	DIR (Ohm-m)	2000
0.2	SN (Ohm-m)	2000





# Induction Tool Calibration Report

Serial Number:	902
Tool Model:	G
Downhole Cal Performed:	Mon Oct 03 21:28:41 2005
Surface Cal Performed:	Thu Sep 29 11:27:51 2005

Surface Calibration:	Air	Loop	
Conductivity Reference:	0.000	450.000	mmho
Conductivity Reading:	0.001	0.634	V
Internal Reference:	Zero	Cal	
Conductivity Reference:	0.000	500.000	mmho
Conductivity Reading:	0.002	0.633	V


Downhole Calibration:	Internal Zero	Internal Cal	
Conductivity Reference:	0.004	449.717	mmho
Conductivity Reading:	8.552	476.379	V
Short Normal Reference:	0.000	17.000	Ohm-m
Short Normal Reading:	0.011	0.207	V

Results:	Gain	Offset
Loop Conductivity:	711.236	-0.730
Downhole Correction:	0.961	-8.217
Short Normal Resistivity:	95.000	0.000

# Gamma Ray Calibration Report

Serial Number:	2001	
Tool Model:	OH	
Performed:	Thu Aug 25 08:21:40 2005	
Calibrator Value:	1.0	GAPI
Background Reading:	0.0	cps
Calibrator Reading:	1.0	cps
Sensitivity:	0.2000	GAPI/cps

Sensor	Offset (ft)	Schematic	Description	Len (ft)	OD (in)	Wt (lb)
CHD	19.50	—	None	0.75	1.50	5.00
GR	17.25	—	GR-OH (2001) SIE	3.50	3.25	40.00
DIC	6.89	—	IEL-G (902)	15.25	4.00	178.00

SP	1.50				
SN	1.00				
Dataset: /field/well/run1/_plots_/jobs_/sil Total Length: 19.50 ft Total Weight: 223.00 lb O.D. 4.00 in					