



**SUPERIOR**  
Black Lick, Pa.  
Mercer, Pa.  
Wooster, Oh.  
Cleveland, Ok.  
Trinidad, Co.

## CEMENT BOND GAMMA RAY LOG

Company XTO Energy Inc.

Well Hill Ranch 36-11

Field Purgatoire River

County Las Animas

State CO

Company XTO Energy Inc.

Well Hill Ranch 36-11

Field Purgatoire River

County Las Animas

State CO

Location:

API # : 05 071 09531 00  
1564' FSL & 2390' FWL

Other Services

temp.

SEC 36 TWP 34S RGE 67W

Permanent Datum Ground Level Elevation 7788'

Log Measured From Ground Level

Drilling Measured From Ground Level

Elevation

K.B. -----

D.F. -----

G.L. 7888'

Date

5-6-08

Run Number

One

Depth Driller

2400'

Depth Logger

2276'

Bottom Logged Interval

2268'

Top Log Interval

Surface

Open Hole Size

7 7/8"

Type Fluid

Water

Density / Viscosity

///

Max. Recorded Temp.

126DEG F

Estimated Cement Top

10'

Time Well Ready

Portable Mast

Time Logger on Bottom

8:30AM

Equipment Number

T0698

Location

Trinidad

Recorded By

W. Hargrove

Witnessed By

Mr. Travis Gordon

Run Number

Bit

From

To

Size

Weight

From

To

Casing Record

Size

Surface String

8 5/8"

Prot. String

Wgt/Ft

Production String

Top

Bottom

464'

00

2350'

Liner

<<< Fold Here >>>

All interpretations are opinions based on inferences from electrical or other measurements and we cannot and do not guarantee the accuracy or correctness of any interpretation, and we shall not, except in the case of gross or willful negligence on our part, be liable or responsible for any loss, costs, damages, or expenses incurred or sustained by anyone resulting from any interpretation made by any of our officers, agents or employees. These interpretations are also subject to our general terms and conditions set out in our current Price Schedule.

### Comments

Lorencito to XTO hill, follow all the way to top, cross cattleguard,  
Take second left to location .



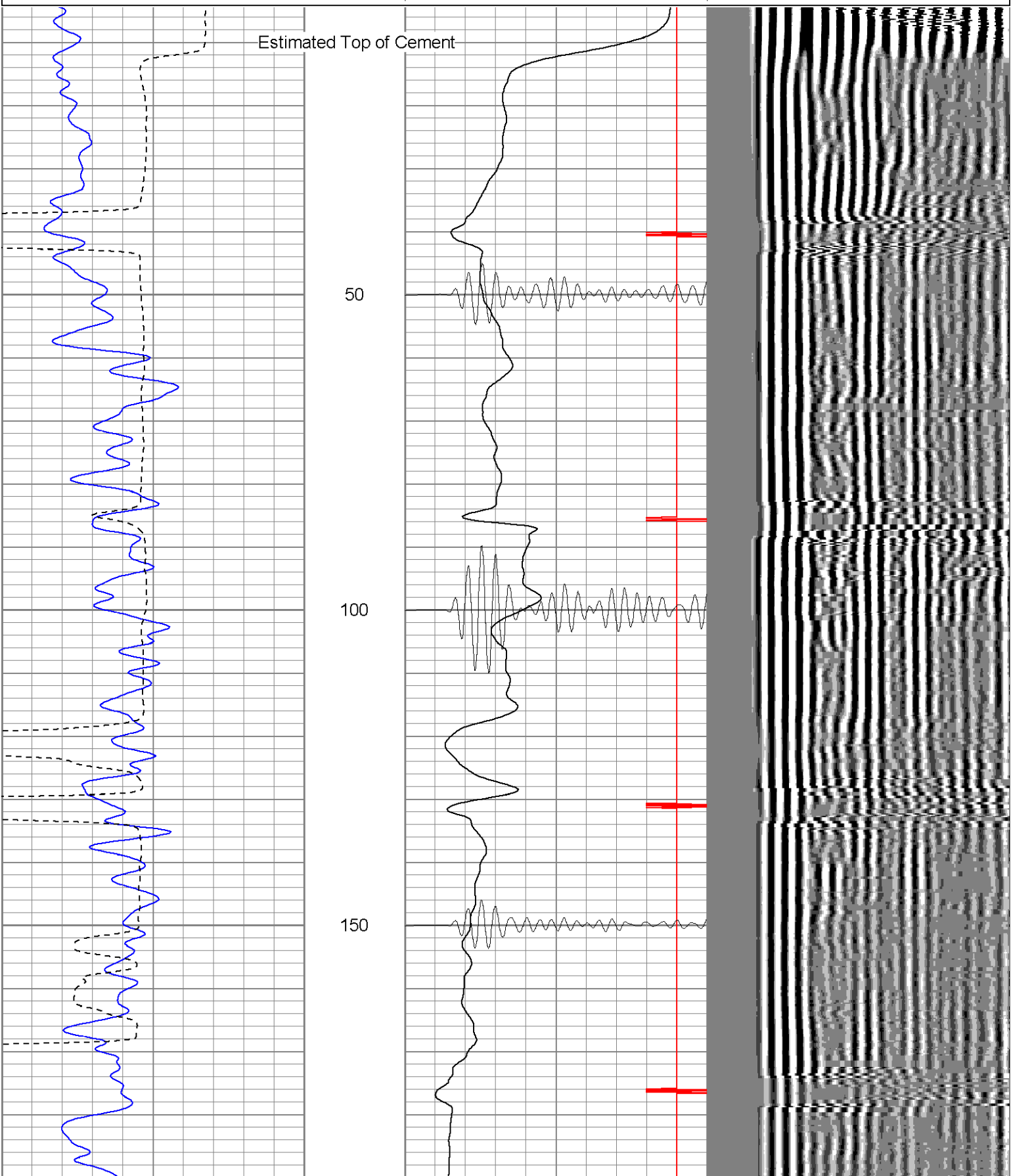
**SUPERIOR**

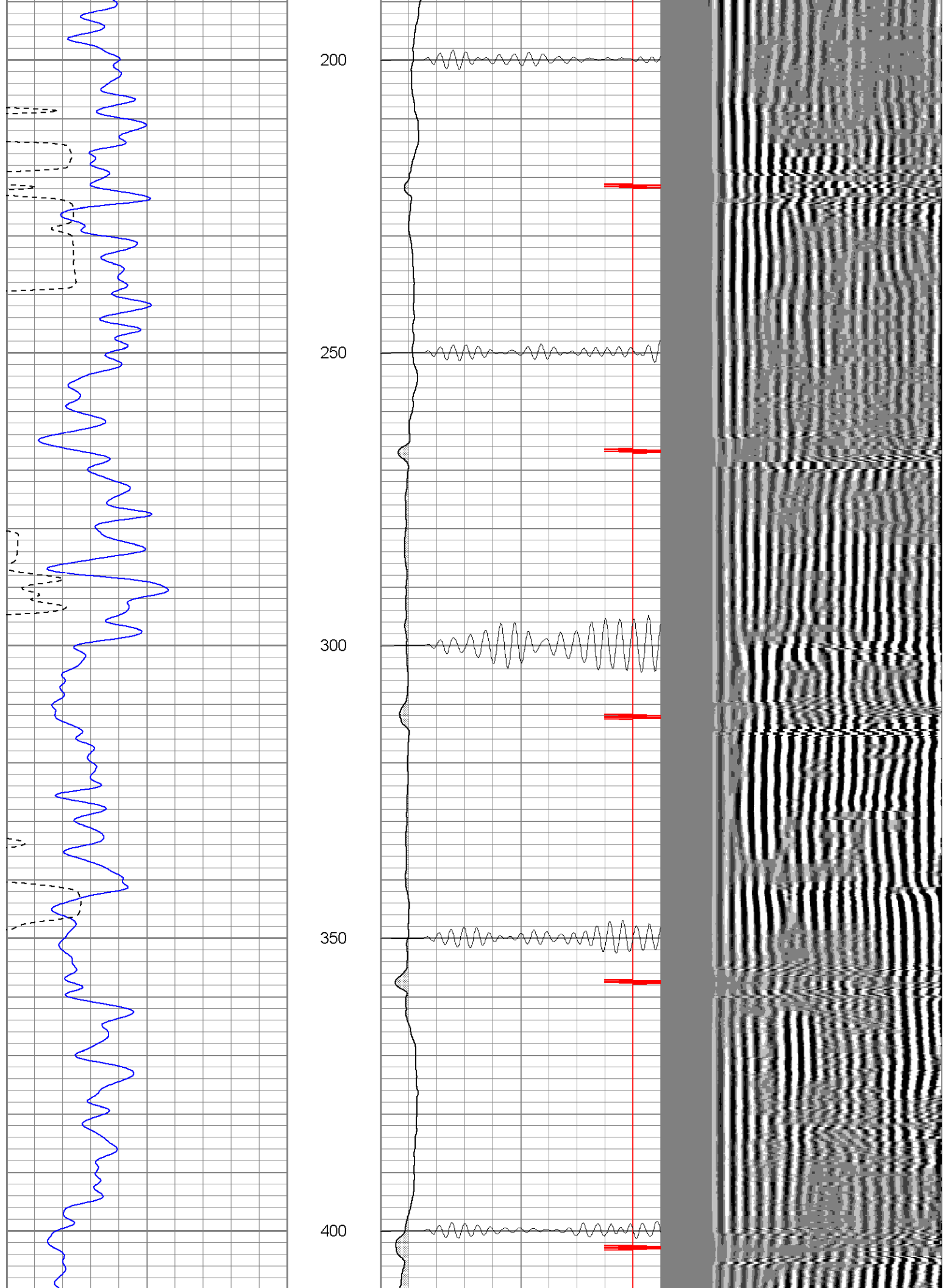
Black Lick, Pa.  
Mercer, Pa.  
Wooster, Oh.  
Cleveland, Ok.  
Trinidad, Co.

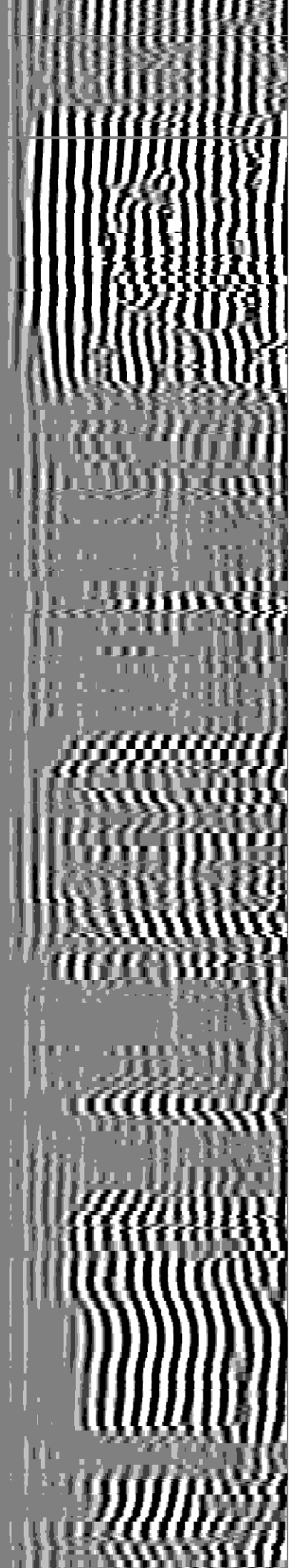
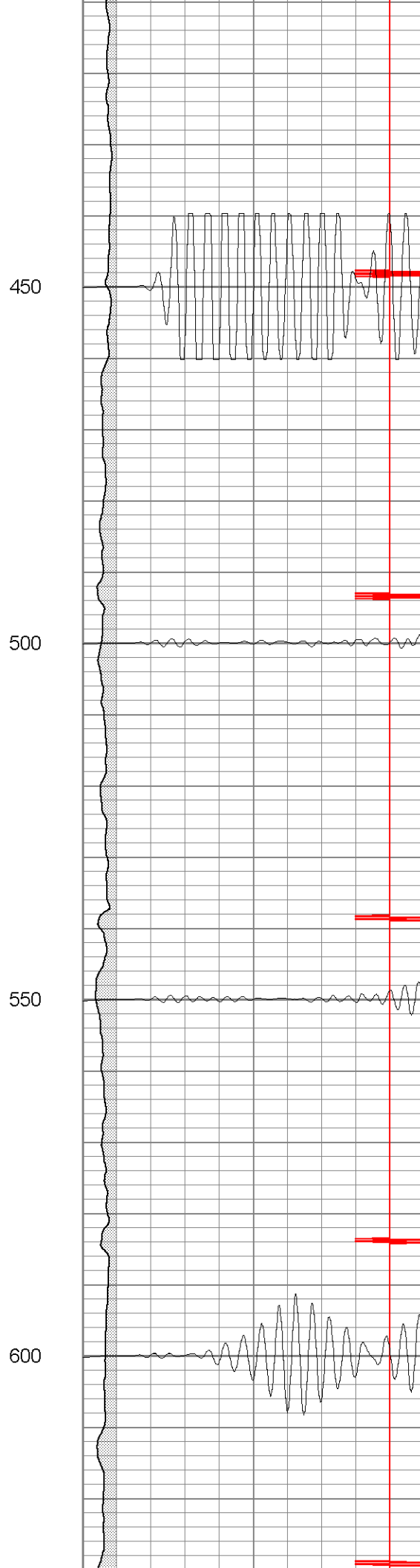
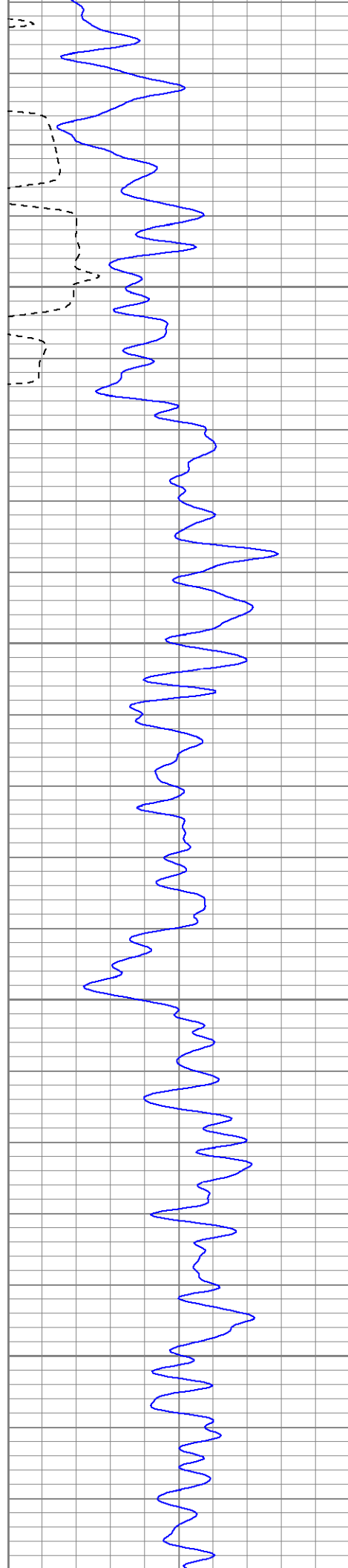
# Main Pass

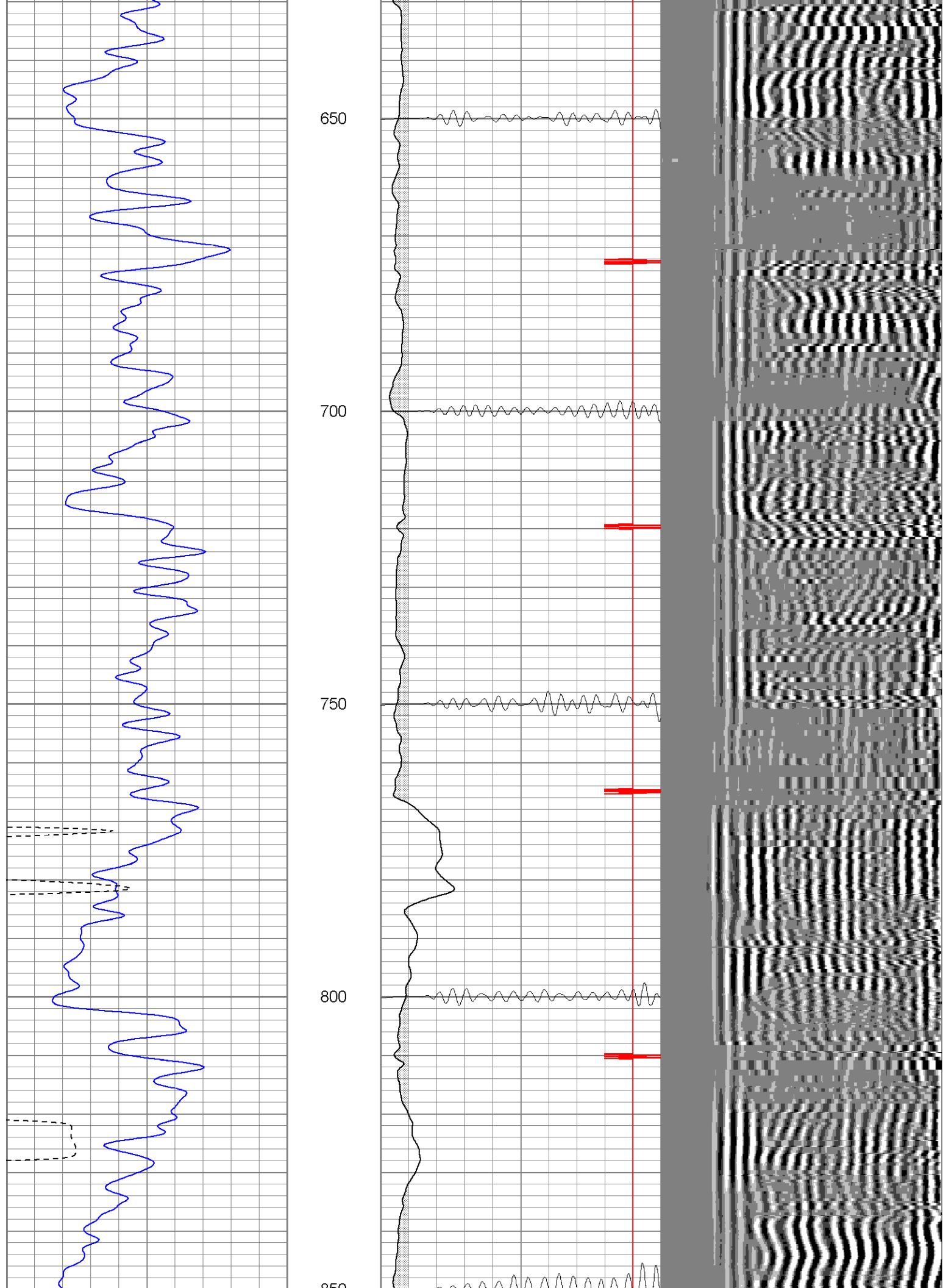
Database File: xtohr3611050608b.db  
Dataset Pathname: pass2.2  
Presentation Format: cblrt  
Dataset Creation: Tue May 06 11:02:24 2008 by Calc Open-Cased 070814  
Charted by: Depth in Feet scaled 1:240

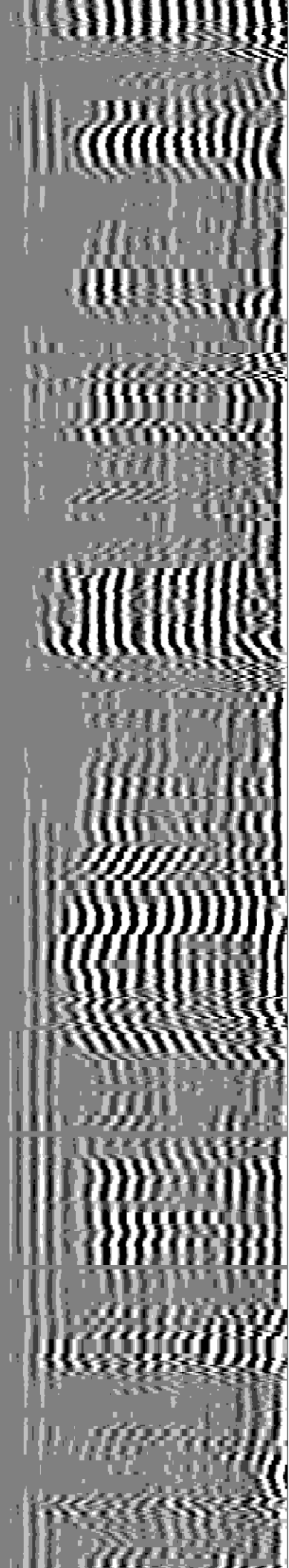
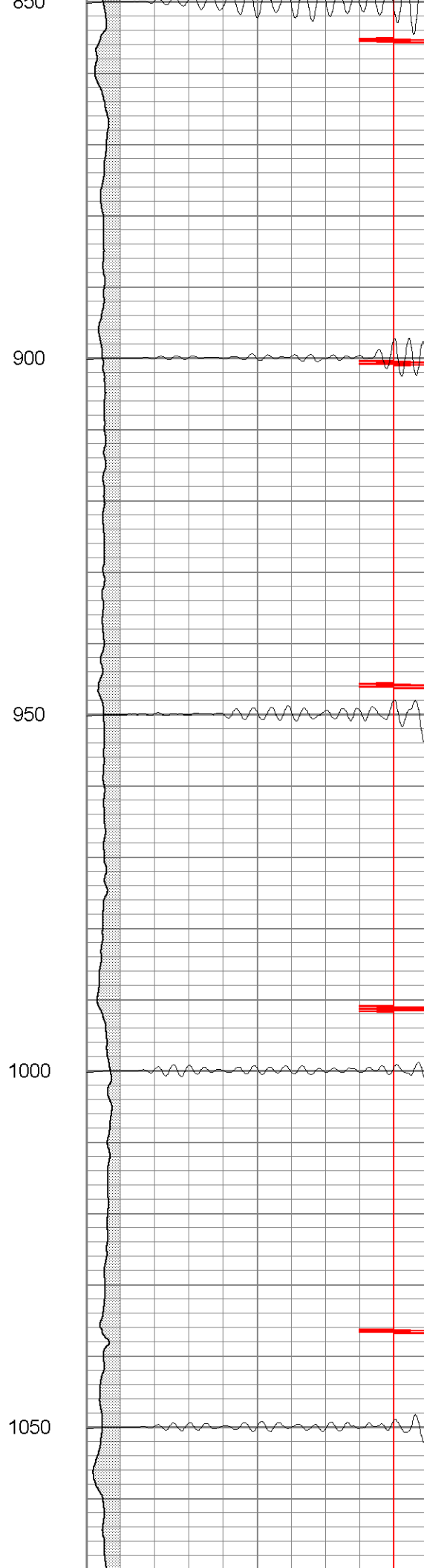
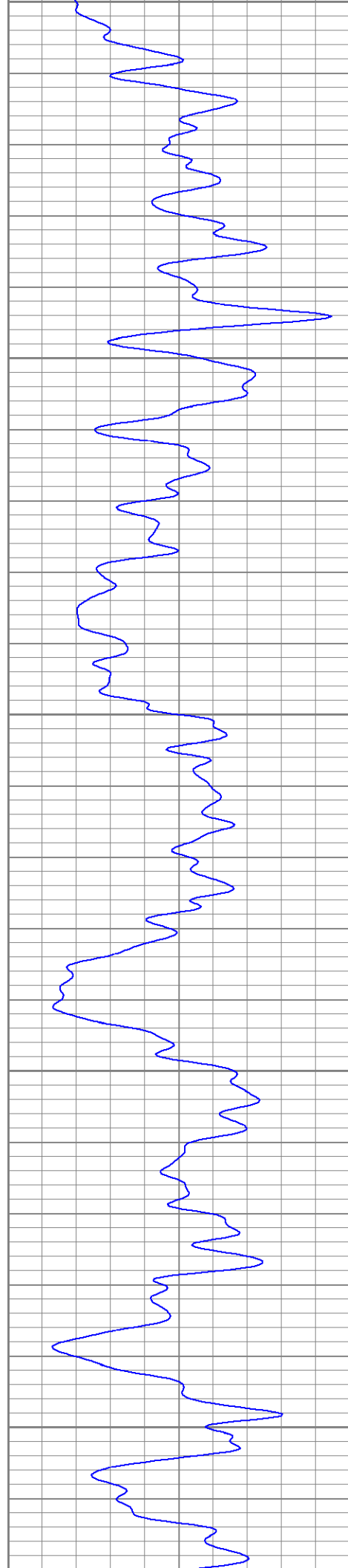
0	GR (GAPI)	200	0	AMP3 (mV)	100	200	Variable Density	1200
400	TT3 (usec)	200	18	CCL	-2			
			200	CBL5	1200			

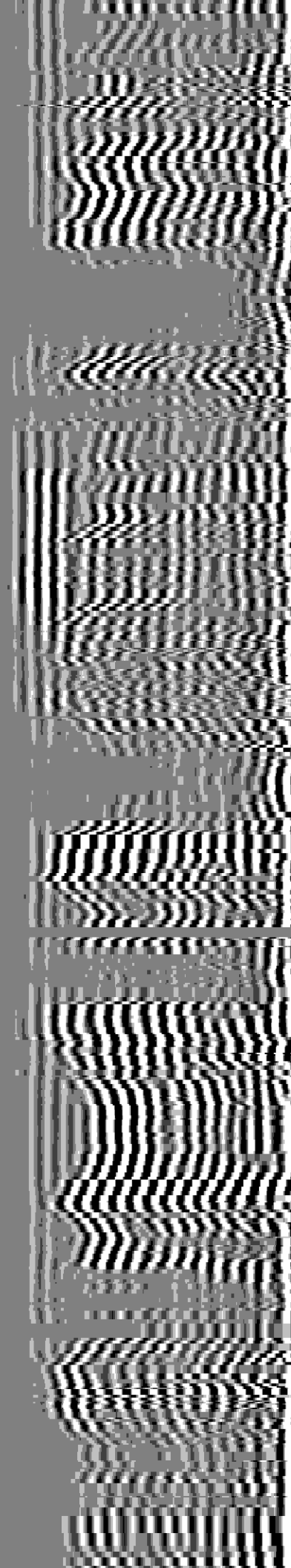
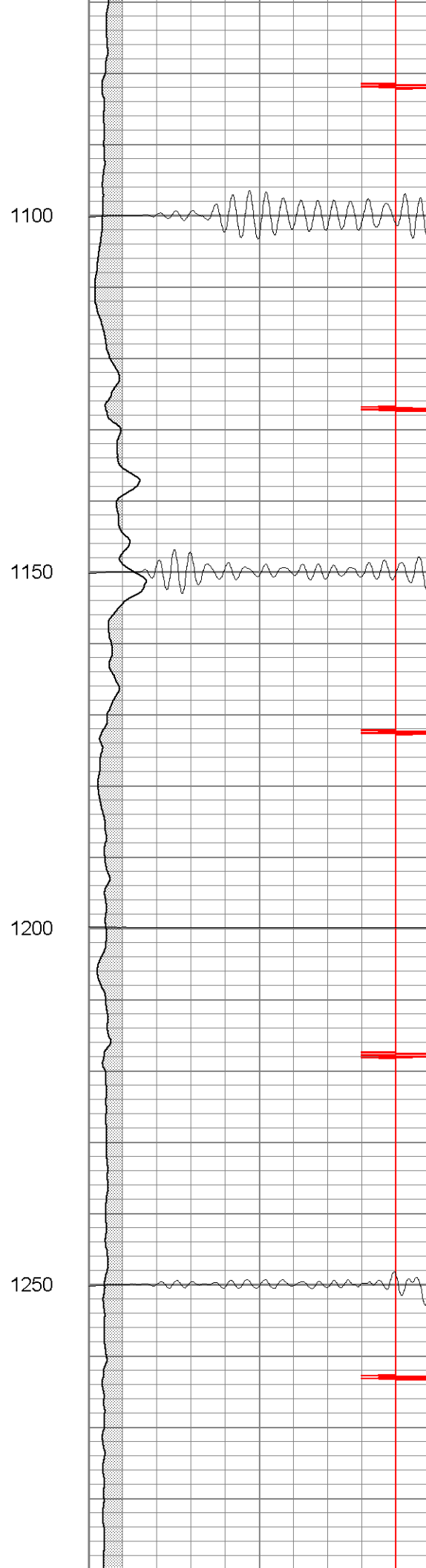
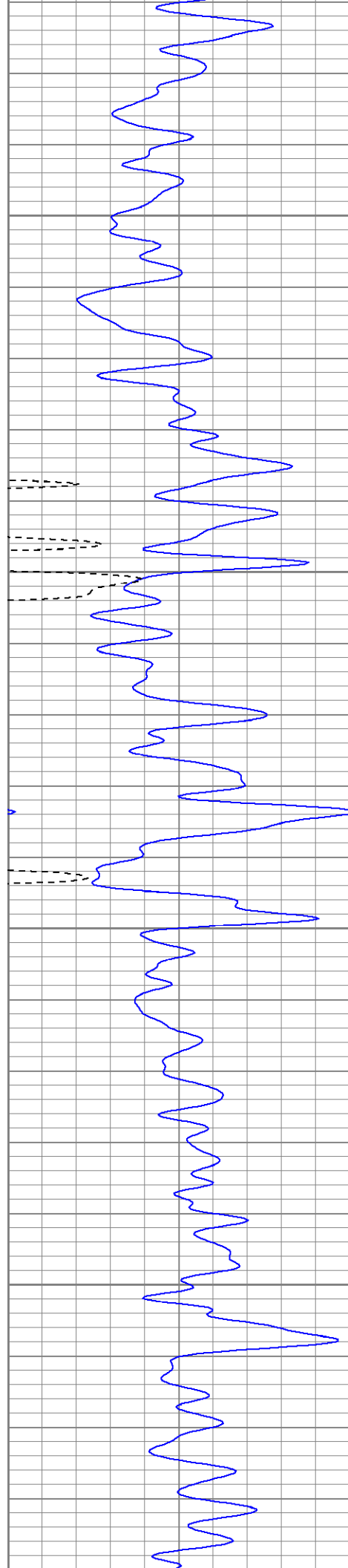




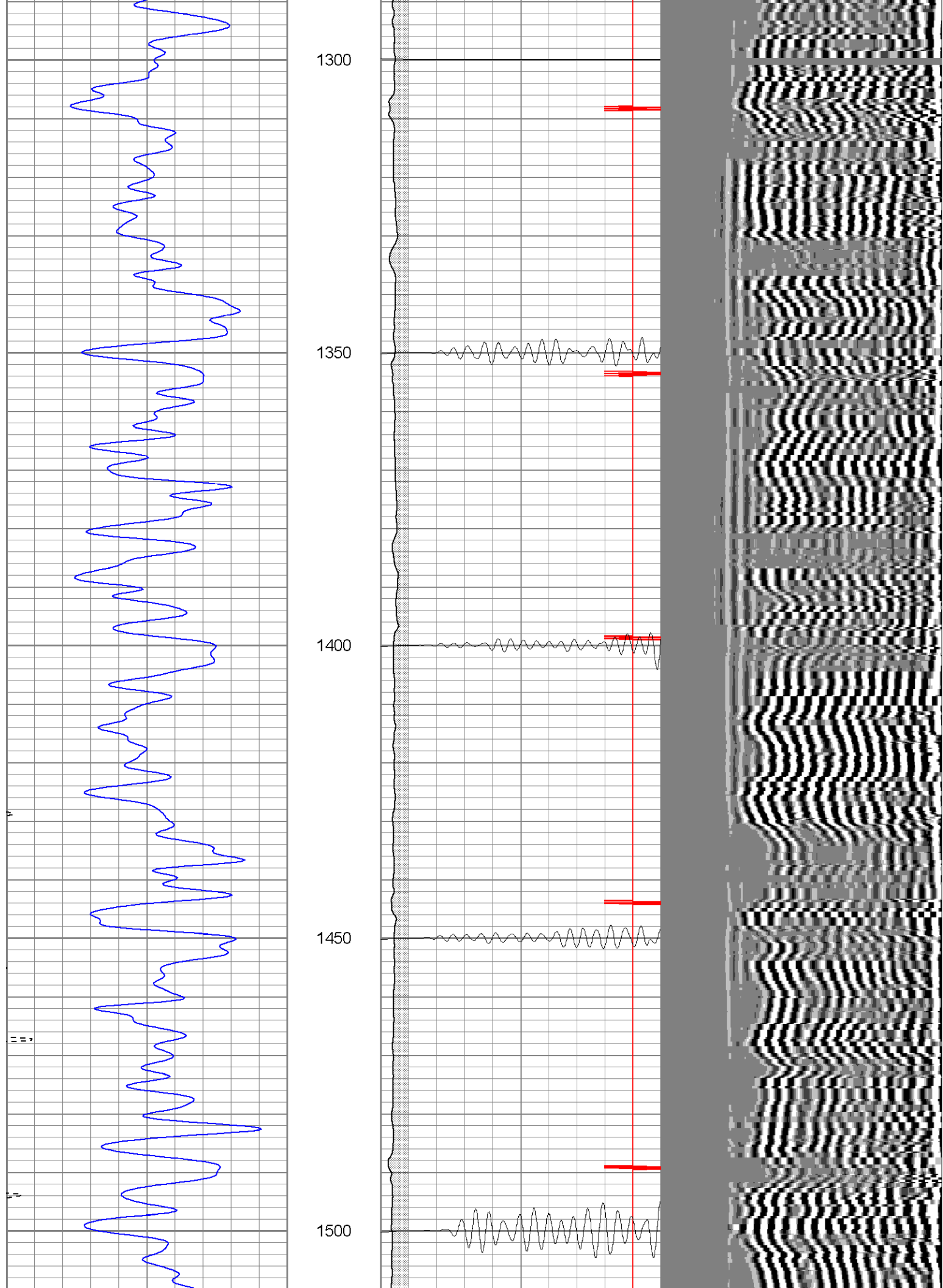




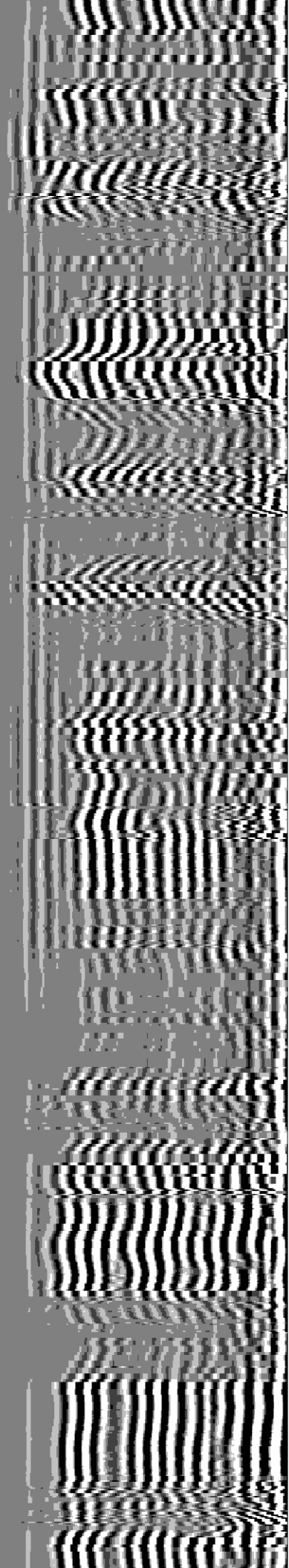
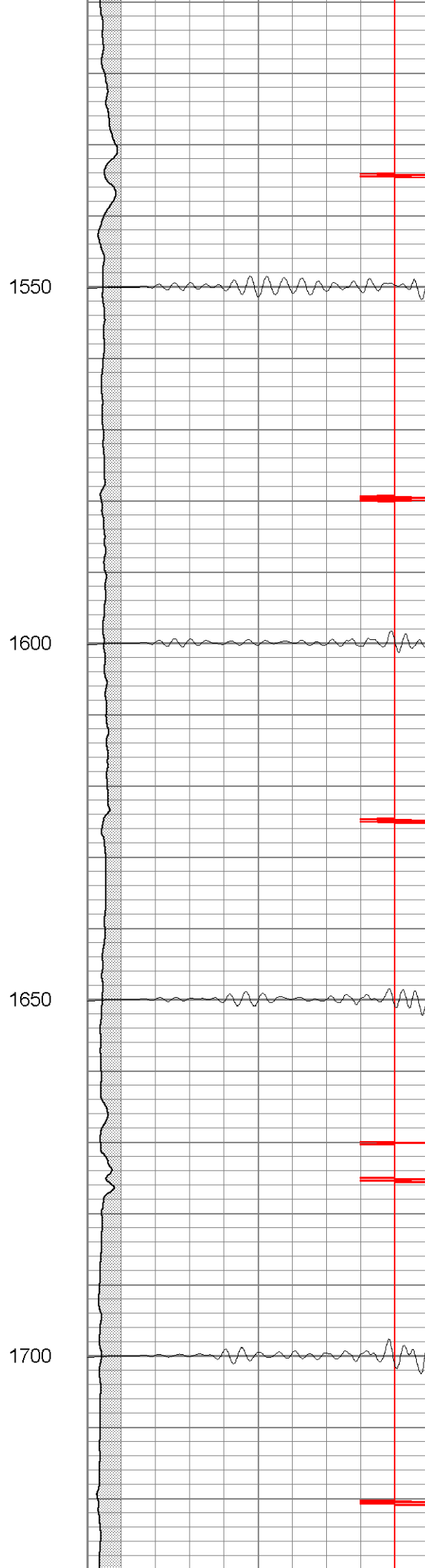
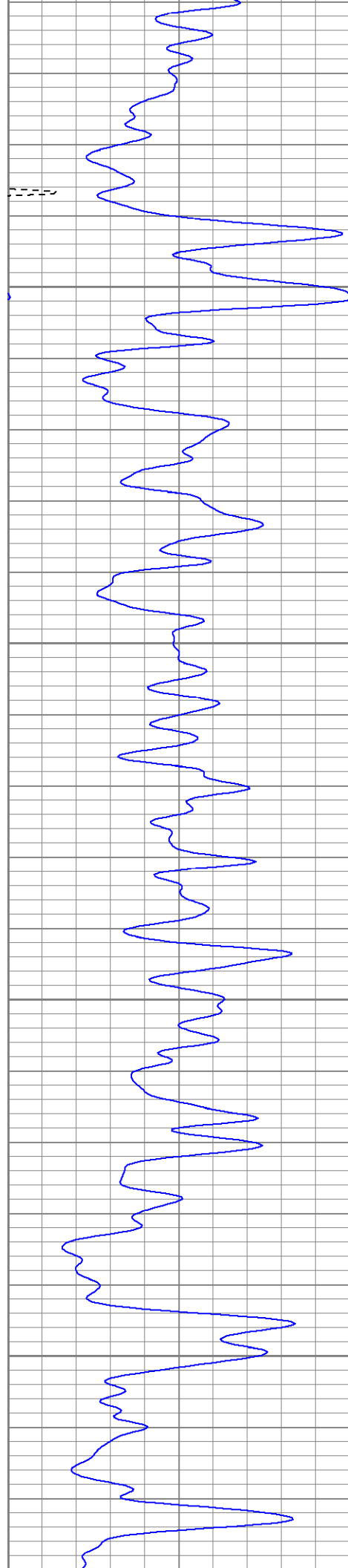


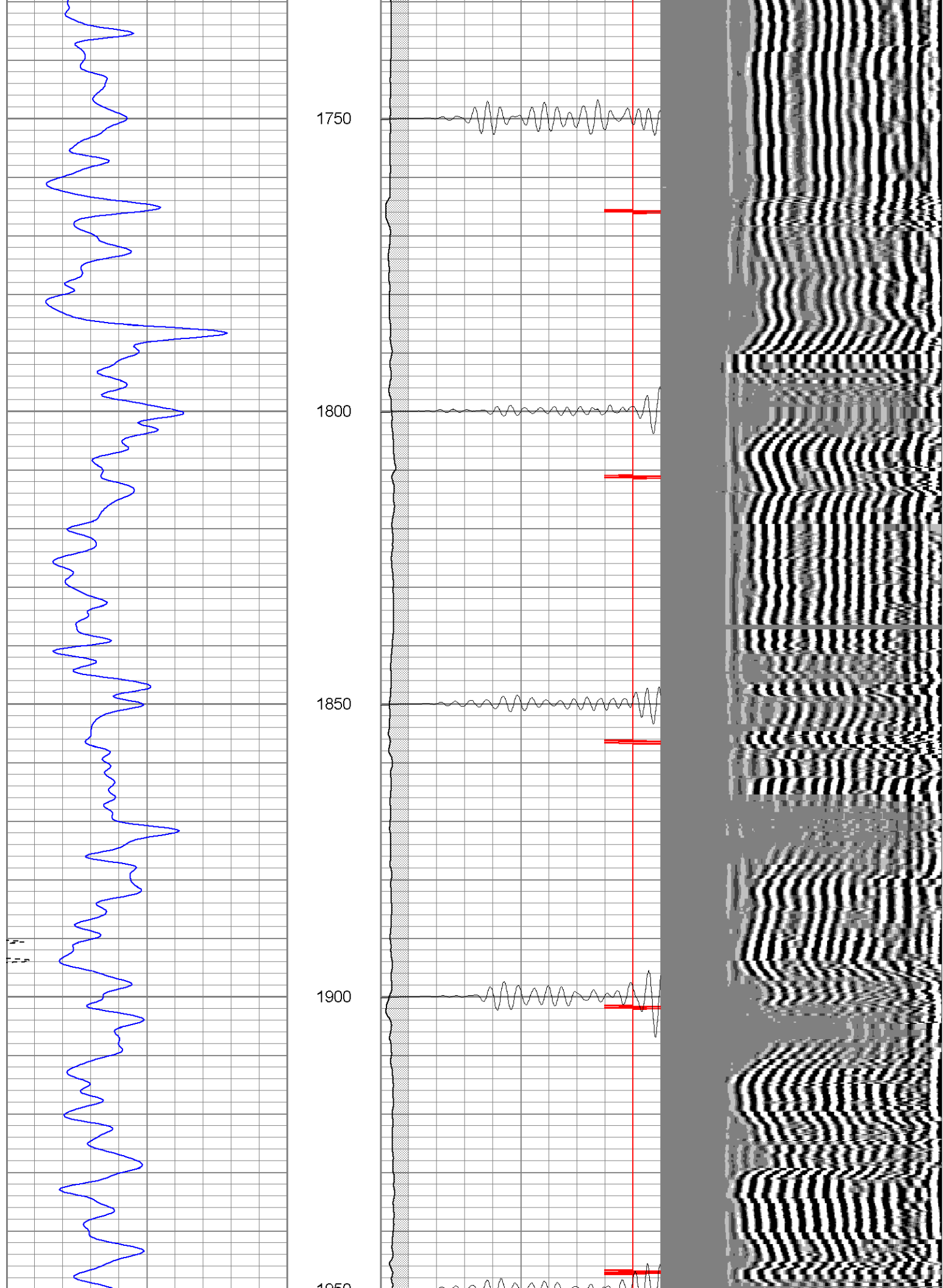


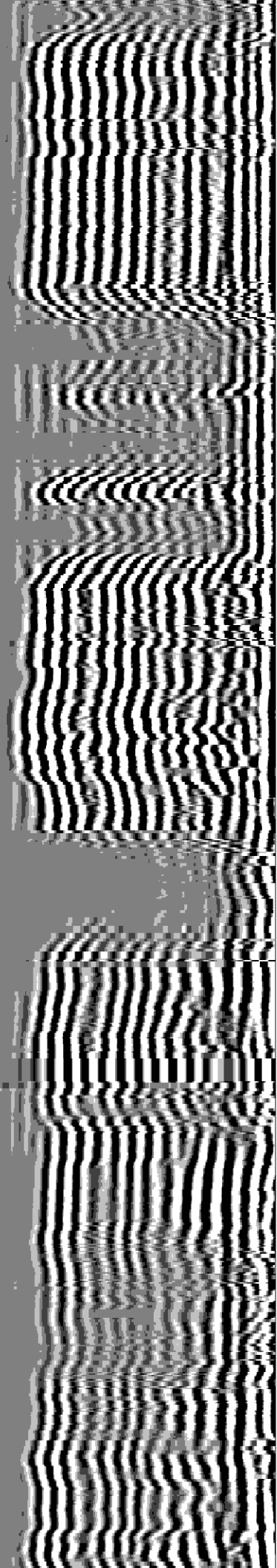
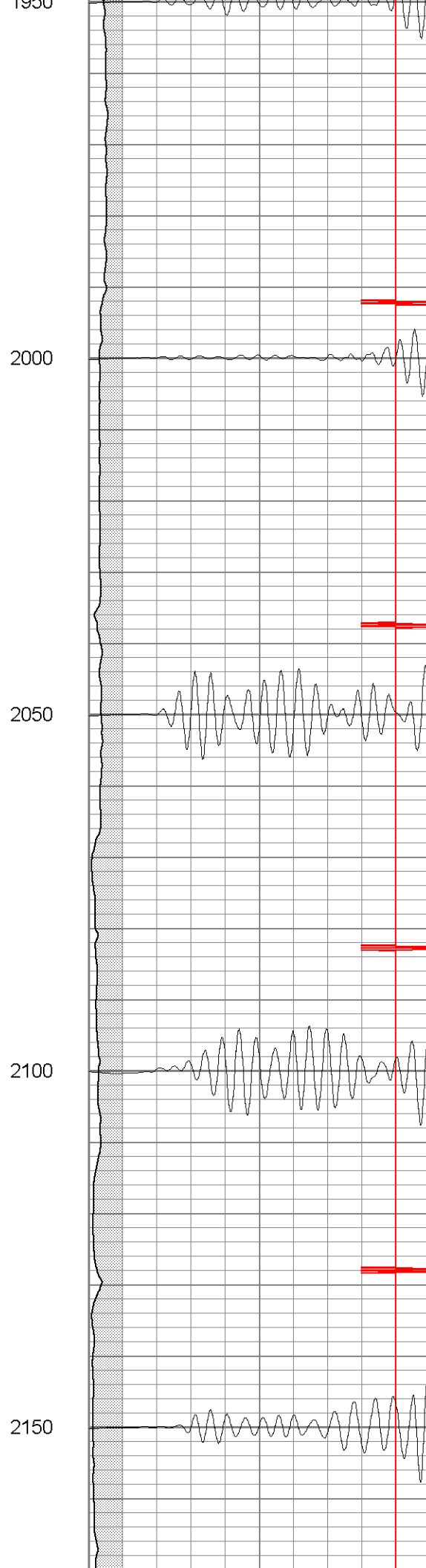
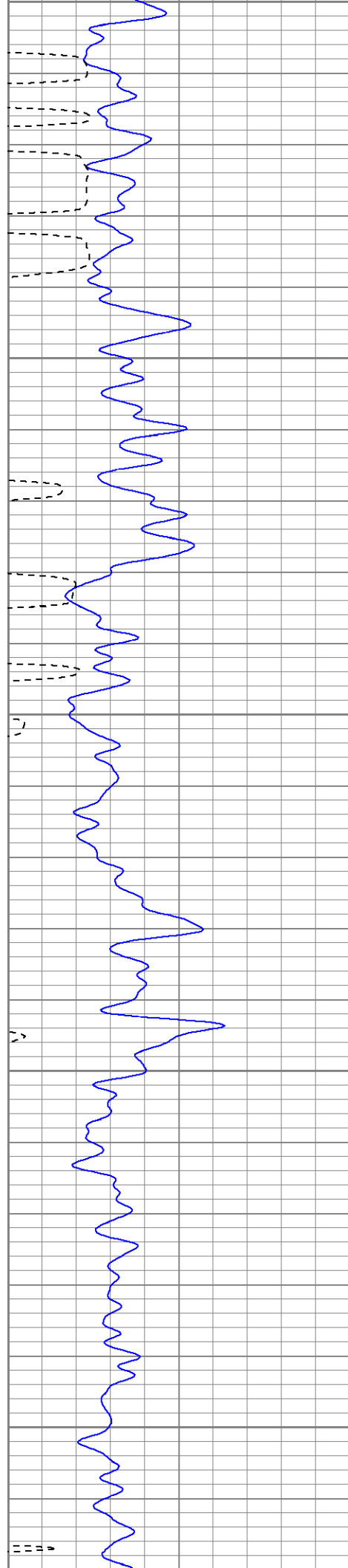


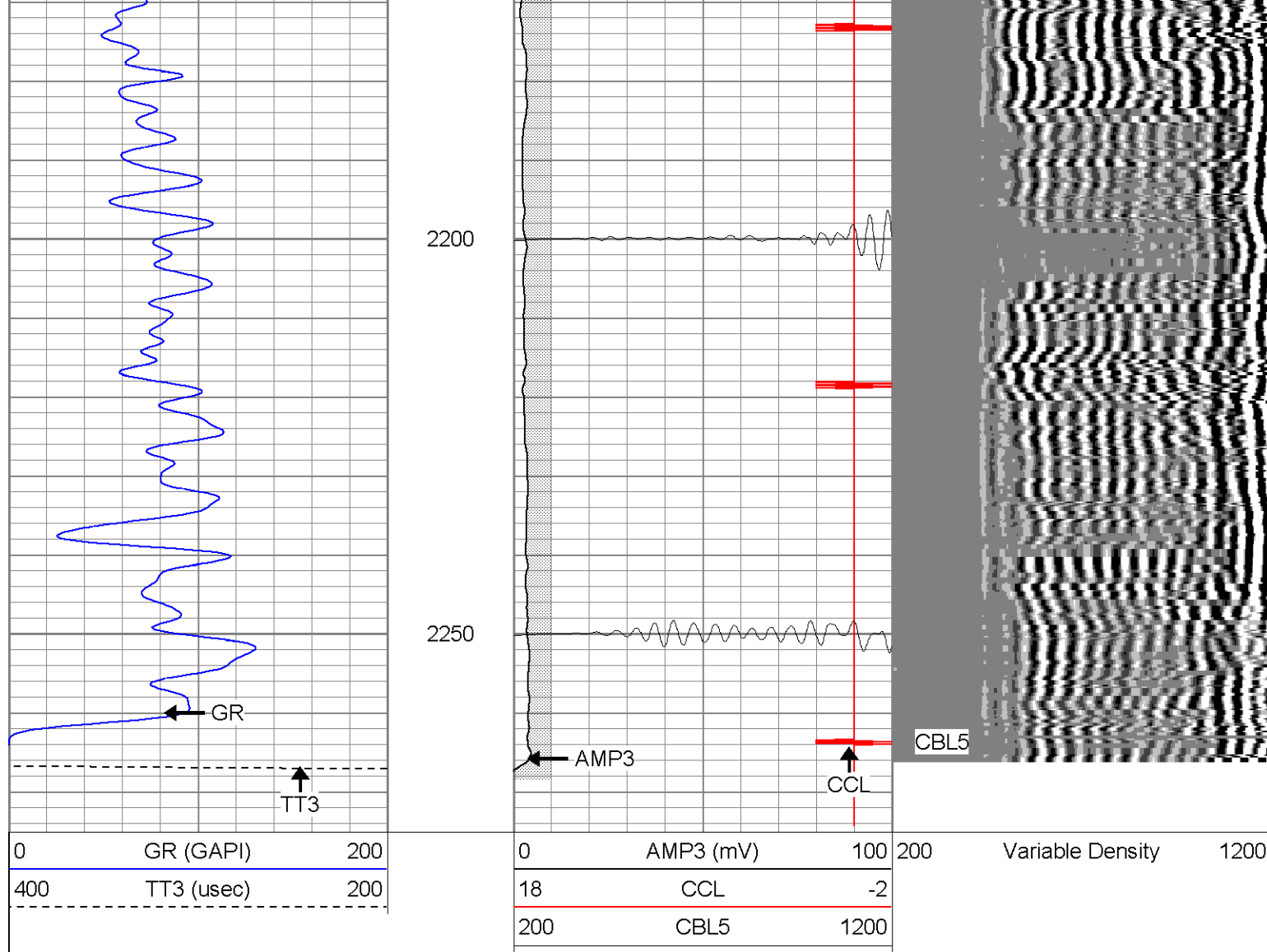










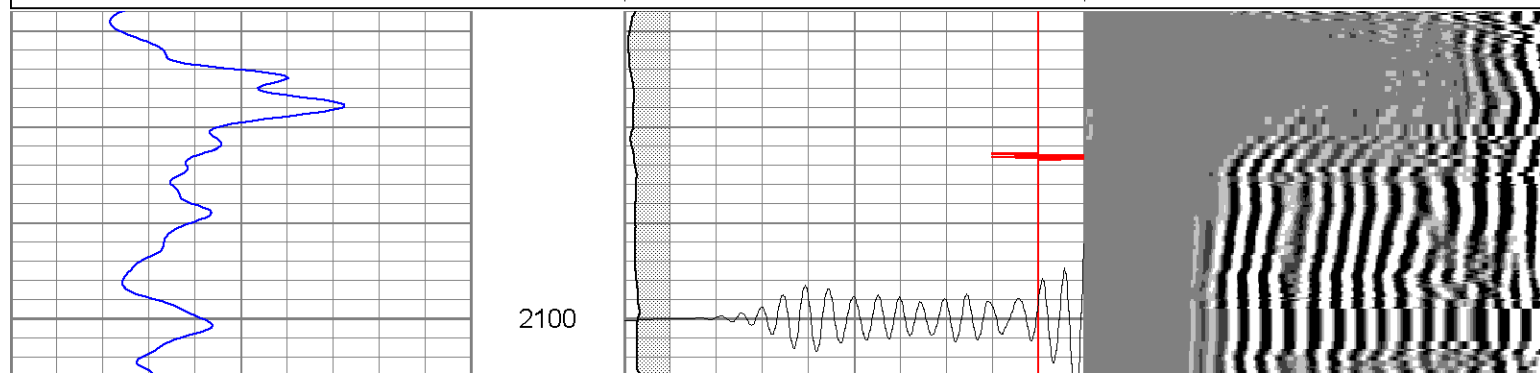
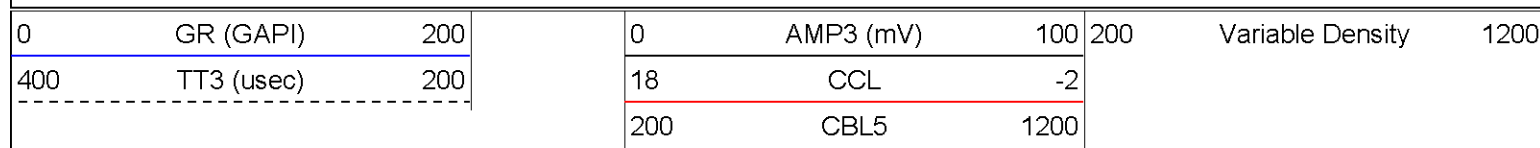


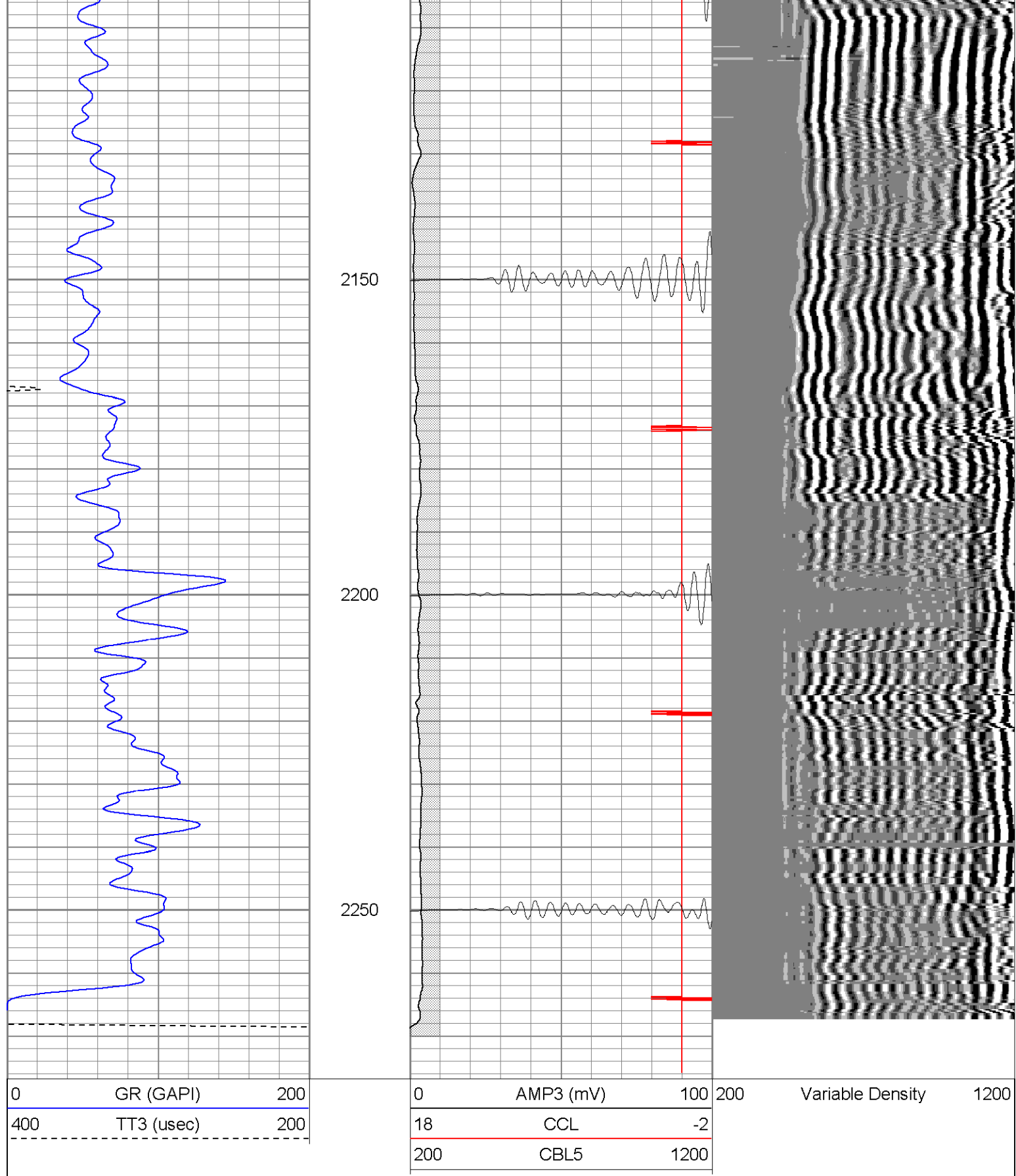
**SUPERIOR**

Black Lick, Pa.  
Mercer, Pa.  
Wooster, Oh.  
Cleveland, Ok.  
Trinidad, Co.

# Repeat Pass

Database File: xt0hr3611050608b.db  
Dataset Pathname: pass1.1  
Presentation Format: cblrt  
Dataset Creation: Tue May 06 11:03:15 2008 by Calc Open-Cased 070814  
Charted by: Depth in Feet scaled 1:240





### Calibration Report

Database File: xtohr3611050608b.db  
Dataset Pathname: pass1  
Dataset Creation: Tue May 06 08:48:19 2008 by Log Open-Cased 070814

### Cement Bond Log Calibration Report

Serial Number:

Titan6

Tool Model: T6  
Performed: Mon May 05 14:41:16 2008

Depth: 1272.56 ft  
Casing Diameter: 5.5 in

3' Spacing                      5' Spacing

Signal Zero: 0                      0                      mV  
Calibrated Amplitude: 85                      85                      mV  
Reading at Signal Zero: 0.0158203                      0.0169922                      V  
Reading in Free Pipe: 1.62                      1.63                      V

Gain: 52.9866                      52.6966  
Offset: 1                      0

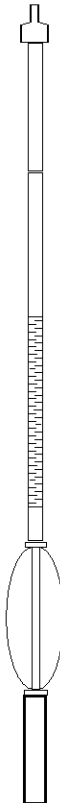
### Gamma Ray Calibration Report

Serial Number: Titan6  
Tool Model: T6  
Performed: Mon May 05 17:43:56 2008

Calibrator Value: 0.0                      GAPI

Background Reading: 1.0                      cps  
Calibrator Reading: 0.0                      cps

Sensitivity: 1.1000                      GAPI/cps

Sensor	Offset (ft)	Schematic	Description	Len (ft)	OD (in)	Wt (lb)	
GR	13.64		CHD-None (0)	0.75	1.50	5.00	
			GR-T6 (Titan6)	2.52	2.25	25.00	
WVF5	9.49		CBL-T6 (Titan6)	7.23	2.25	110.00	
WVF3	8.49						
CCL	0.81		CENT-X (2)	3.00	1.69	25.00	
			CCL-T6long (Titan6long)	2.15	2.75	15.00	

Dataset: xtohr3611050608b.db: field/well/run1/pass1  
Total Length: 15.66 ft  
Total Weight: 180.00 lb  
O.D.: 2.75 in