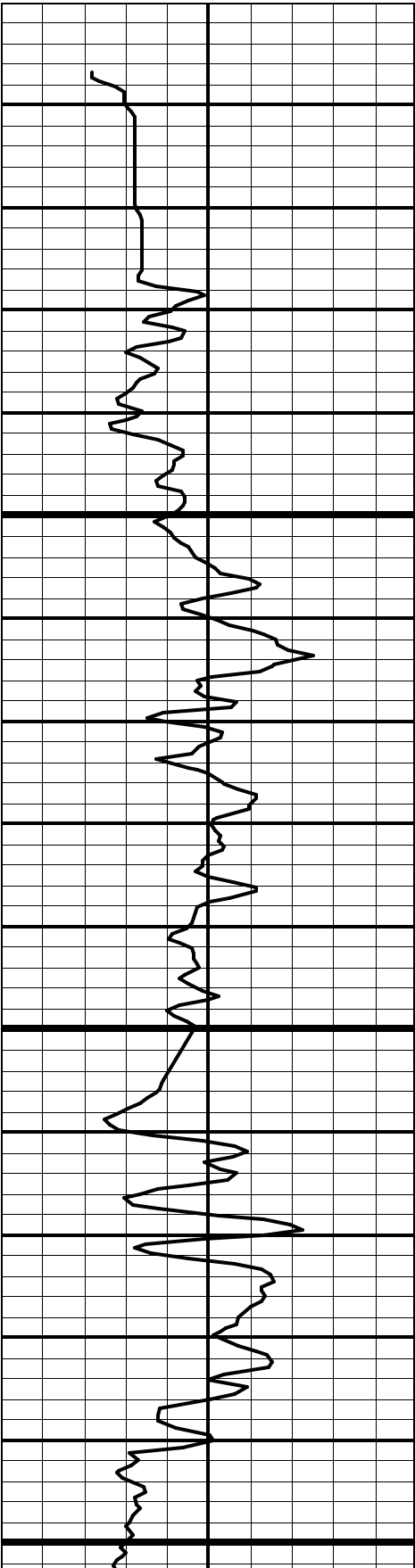
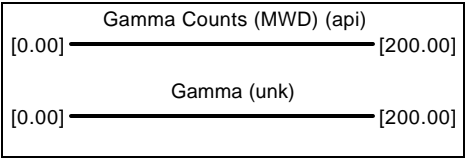


EL PASO PRODUCTION  
RATON C-65  
RKB 7.5 (from ground level = 0)



MD  
1:200 (ft)

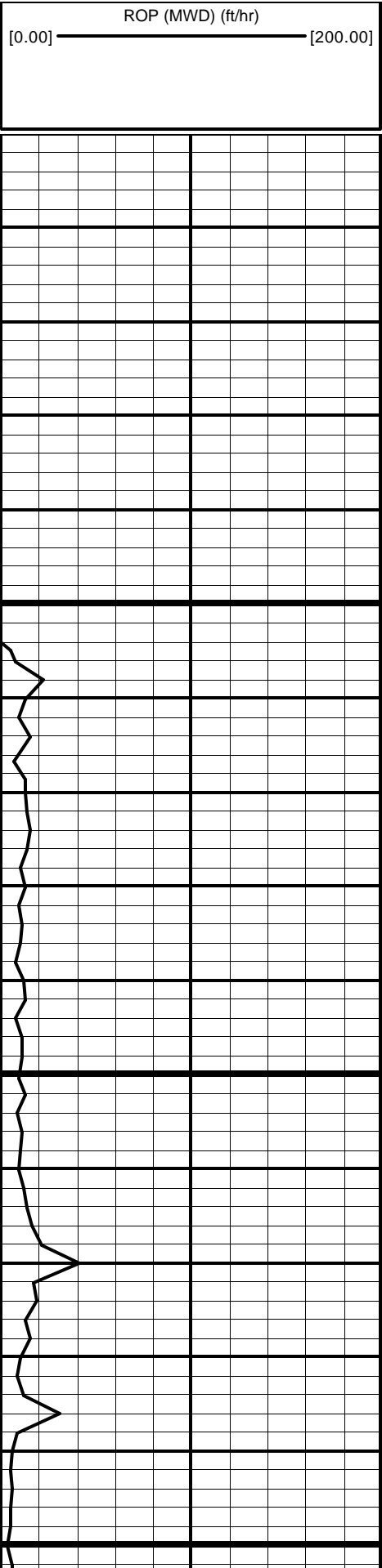
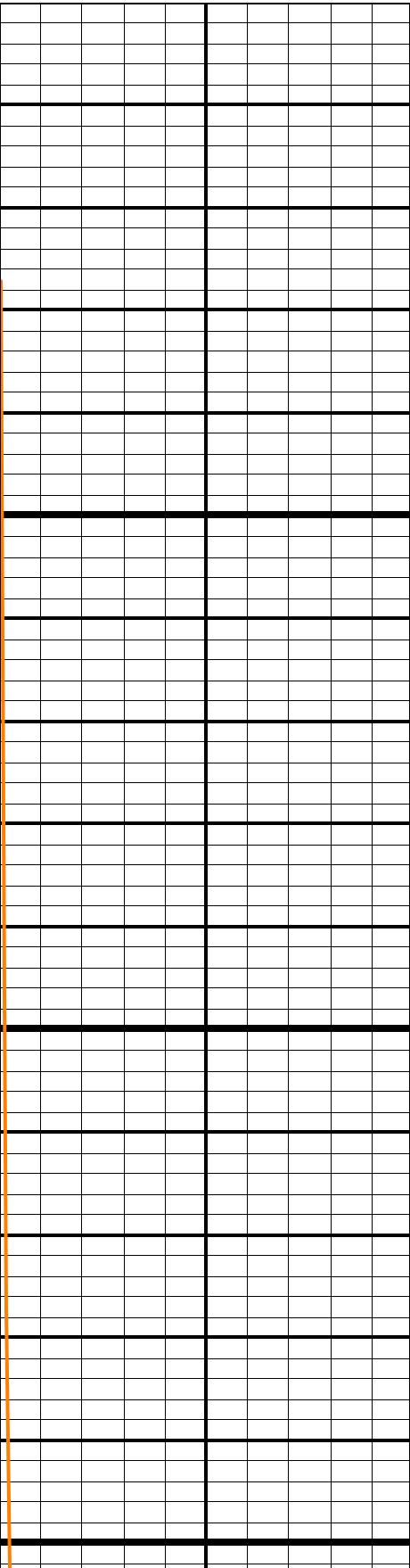
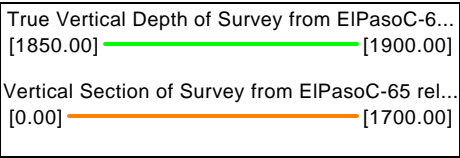
1650

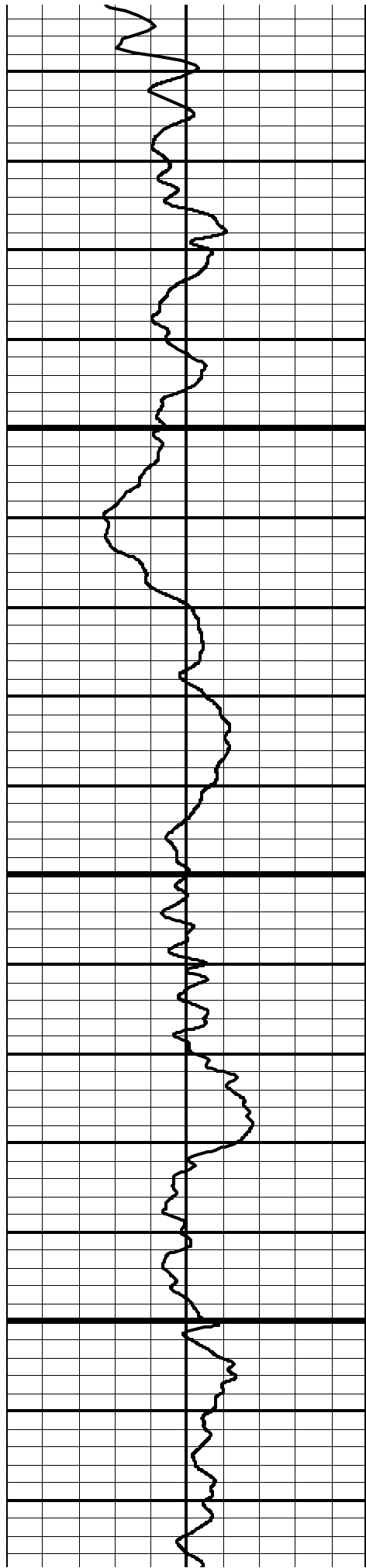
1700

BOTTOM OF  
WINDOW

1750

1800



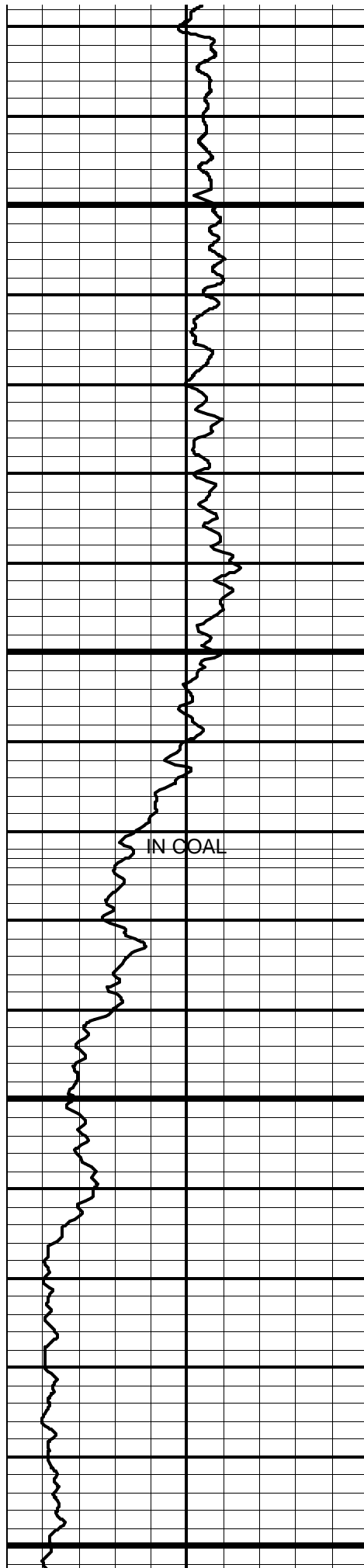


1850

1900

1950





IN COAL

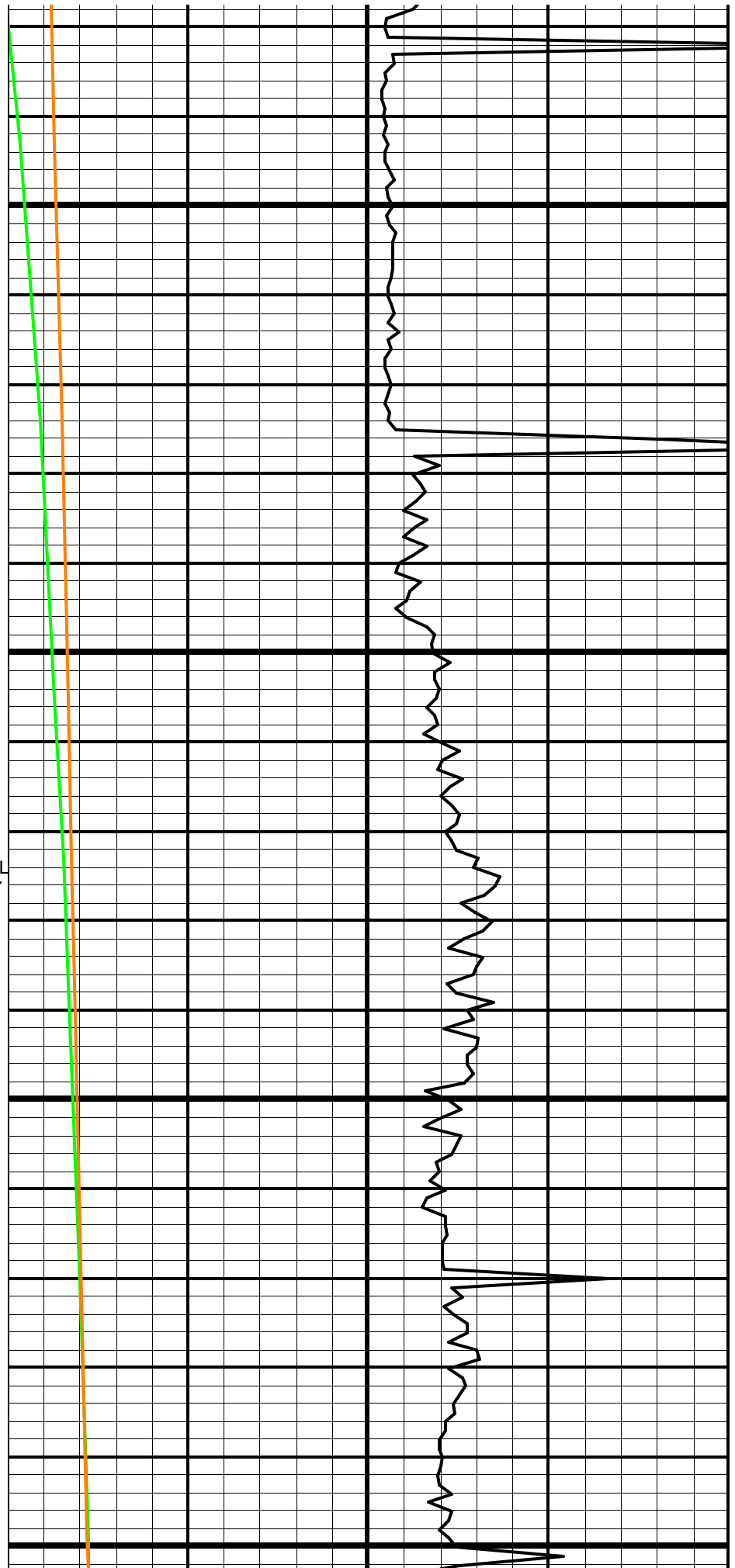
TOP OF COAL  
TVD=1857.77  
VS=305.62  
MD = 2073

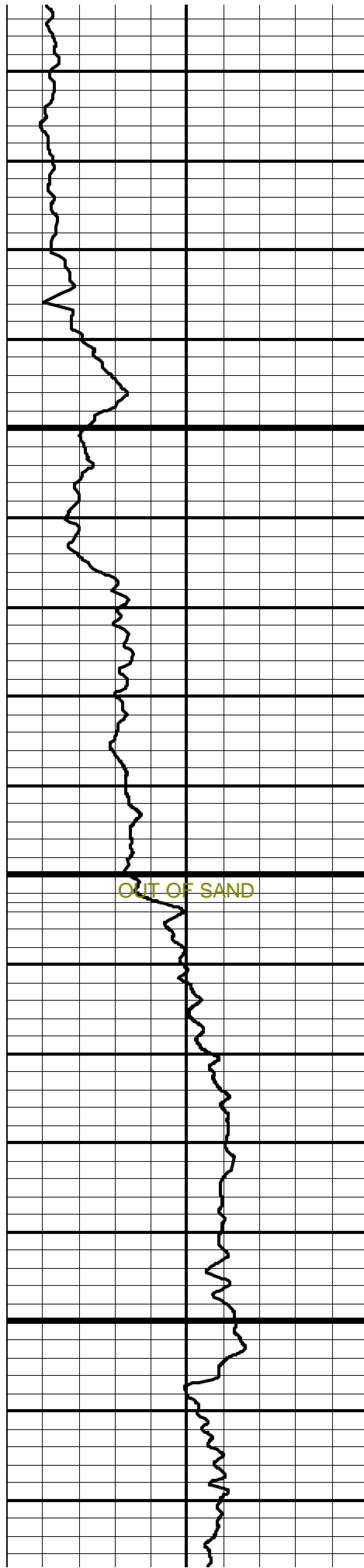
2000

2050

2100

2150

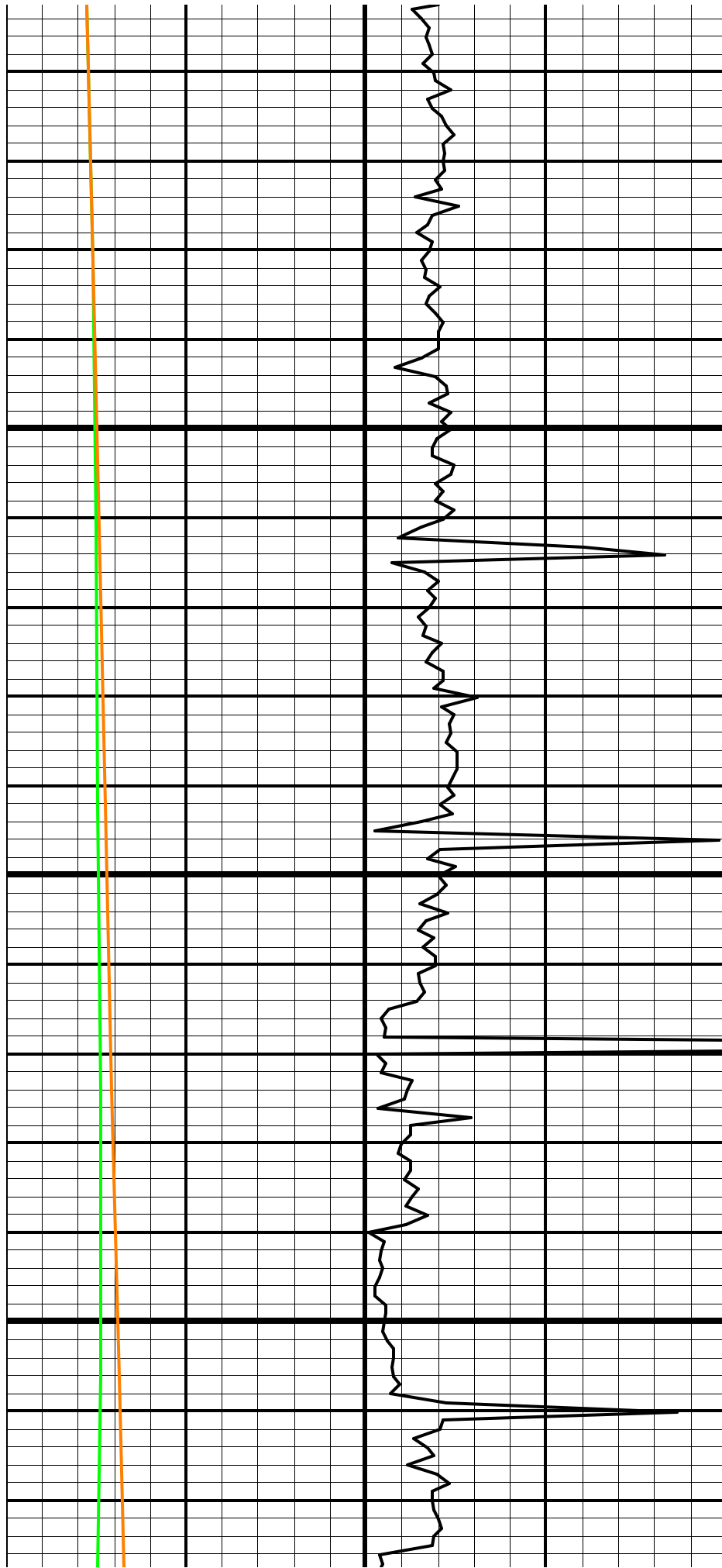


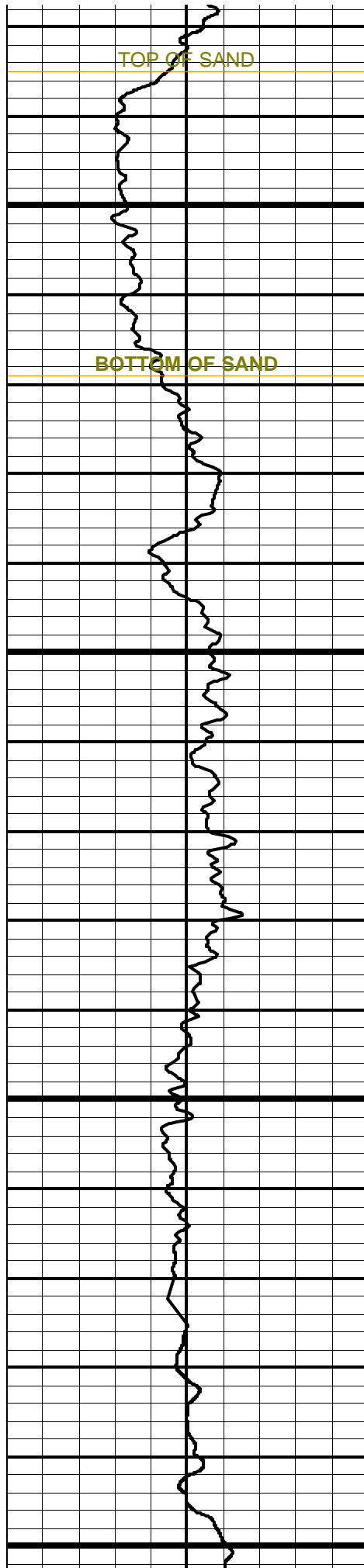


2200

2250

2300



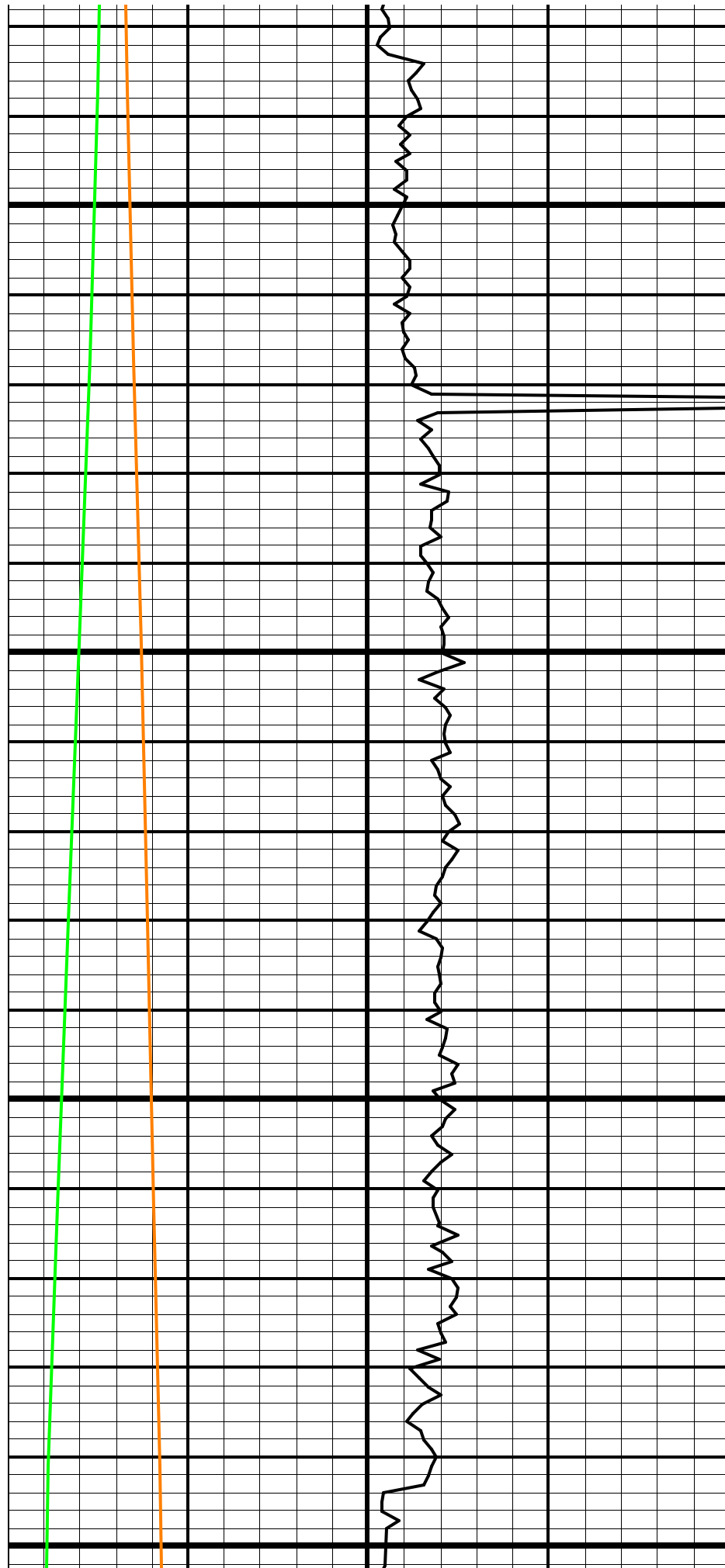


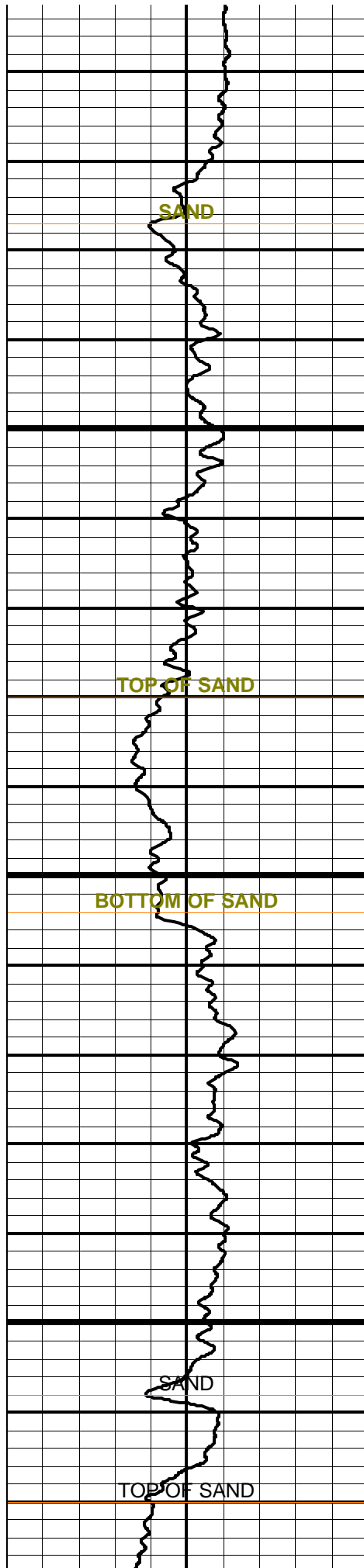
2350

2400

2450

2500



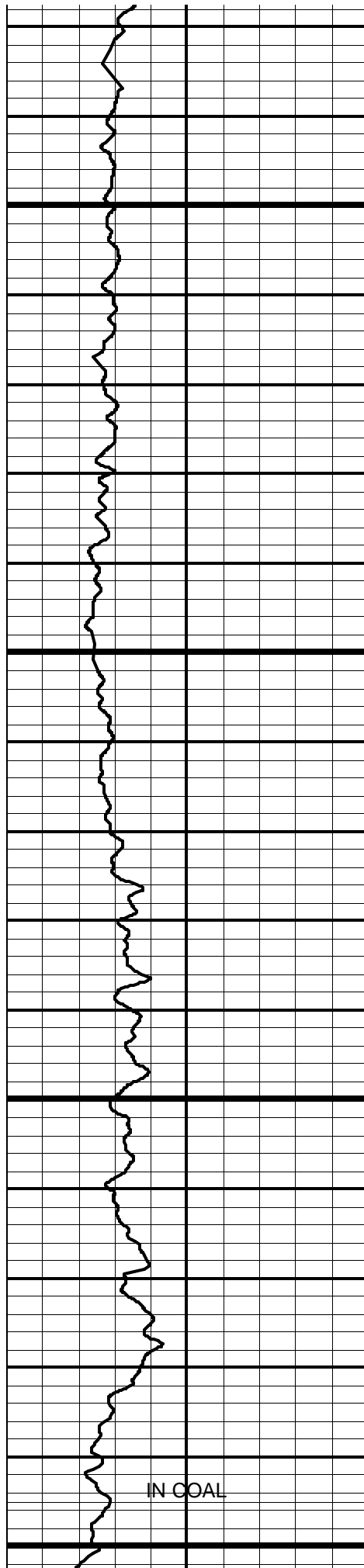


2550

2600

2650





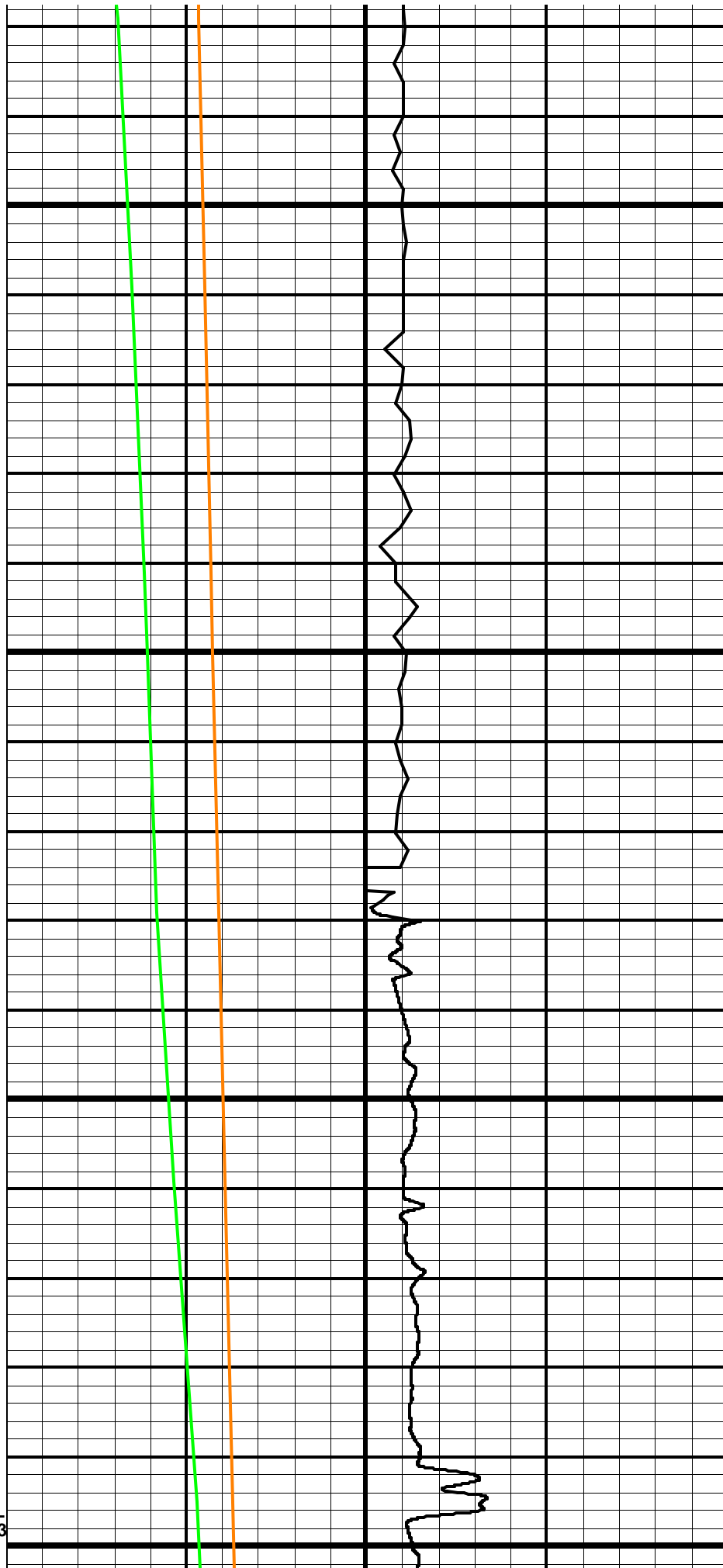
IN COAL

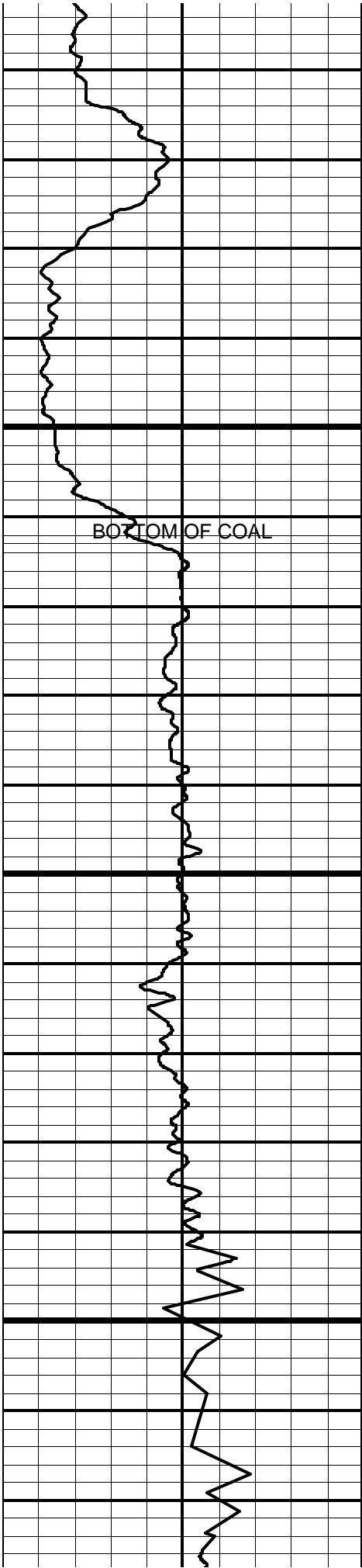
TOP OF COAL  
TVD = 1876.53  
2850  
VS-1074 06

2700

2750

2800



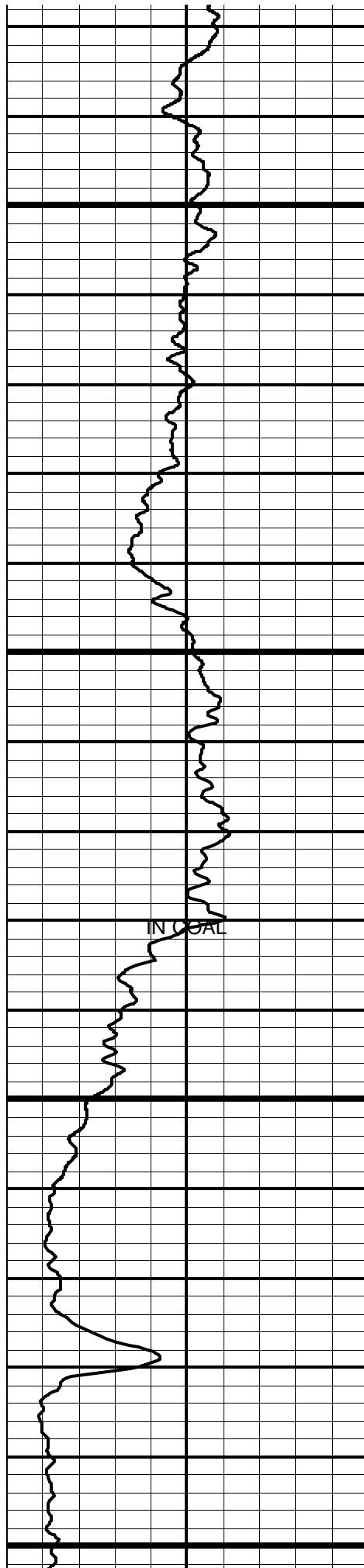


VS=1074.30  
MD = 2845

OUT OF COAL  
TVD =  
1880.43 VS  
= 1142.62







3050

3100

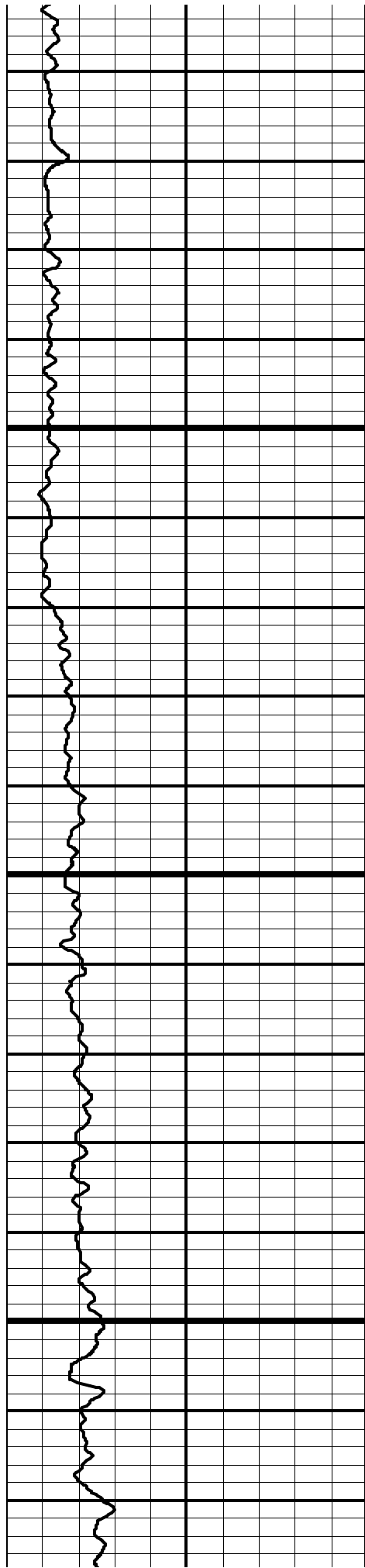
IN COAL

TOP OF COAL  
TVD = 1890.43  
VS = 1360  
61 MD =  
3132

3150

3200

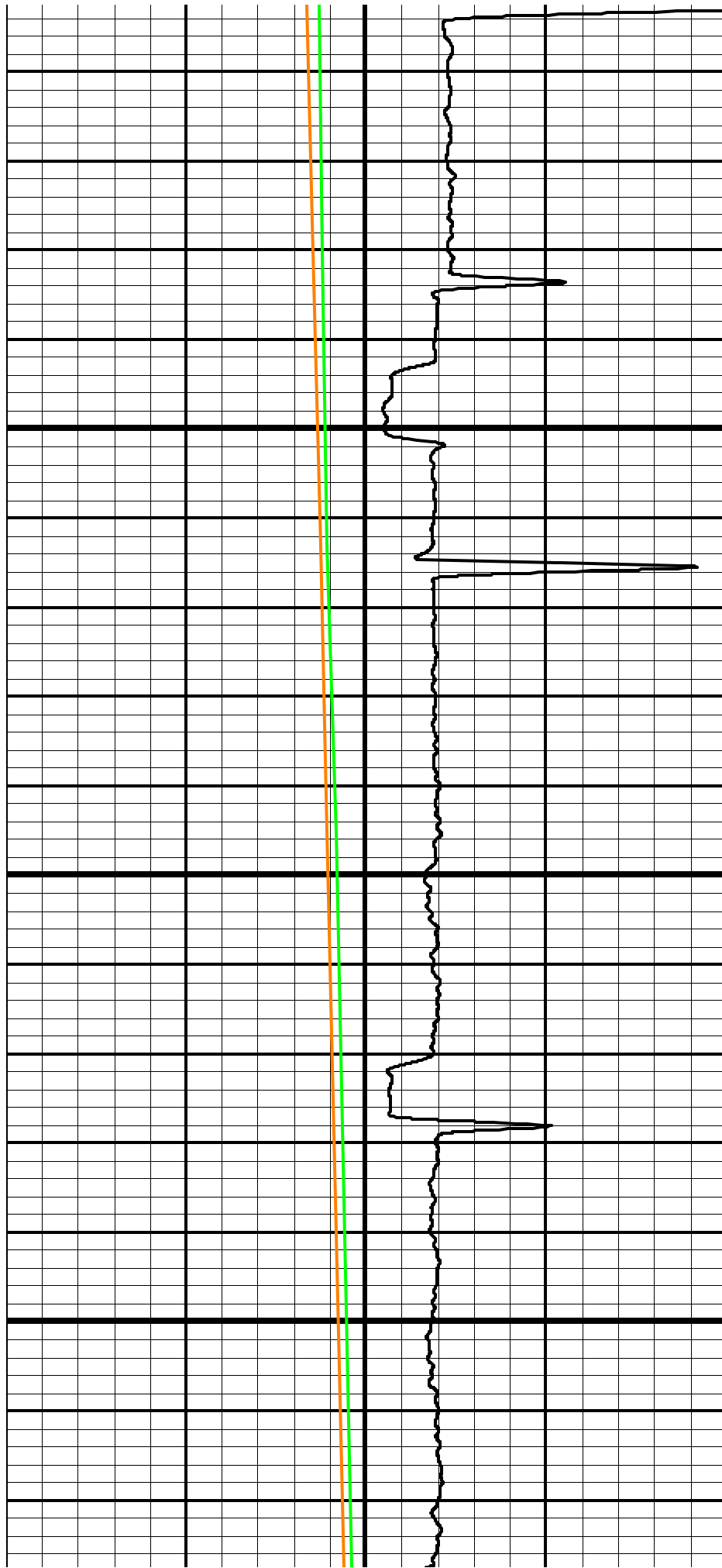


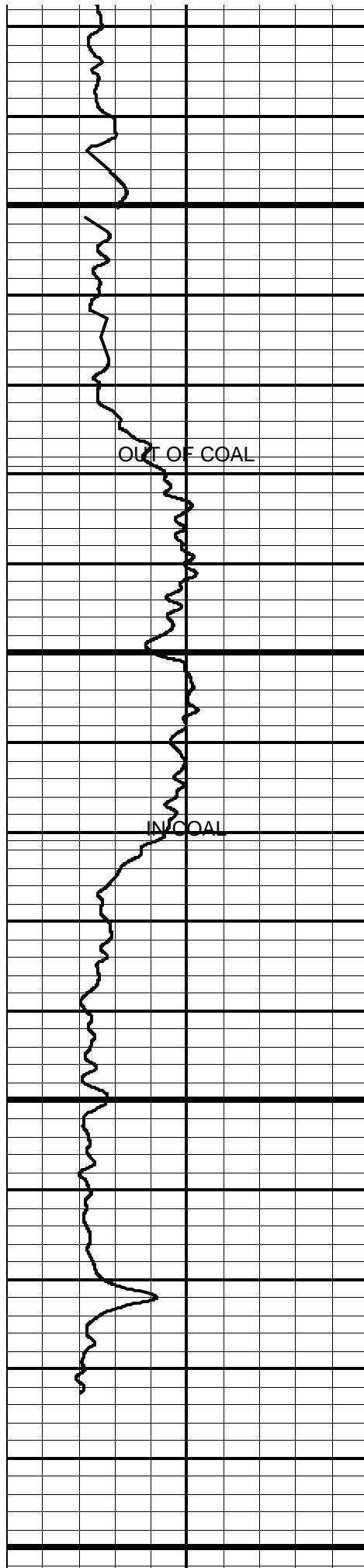


3250

3300

3350





OUT OF COAL

IN COAL

BOTTOM OF  
COAL TVD =  
1899.07 VS  
= 1655.82

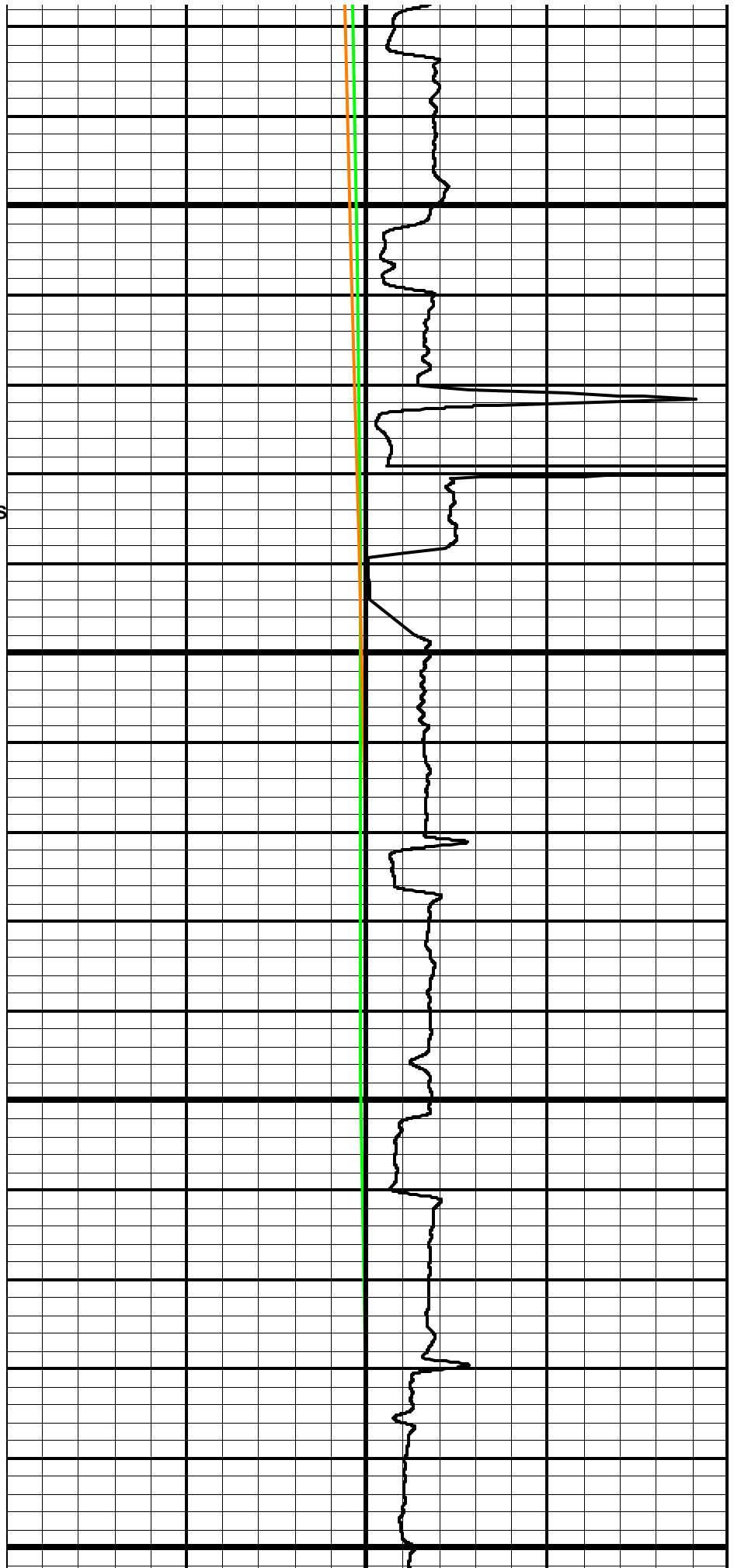
BOTTOM OF  
COAL TVD =  
1899.2  
VS = 1697.61

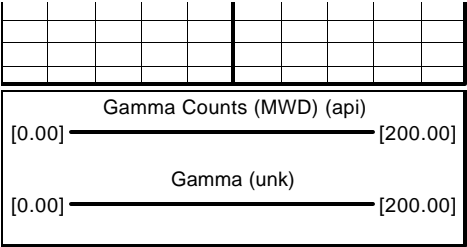
3400

3450

3500

3550





MD  
1:200 (ft)

