

Patterson

**DUAL
INDUCTION
LOG**

Company XTO Energy Inc.		Company XTO Energy Inc.	
Well Golden Eagle 19-06		Well Golden Eagle 19-06	
Field Purgatoire River		Field Purgatoire River	
County Las Animas		County Las Animas	
State Colorado		State Colorado	
Location: API # : 05 071 08698 00		Other Services cdl neutron	
SEC 19 TWP 33S RGE 67W		Elevation	
Permanent Datum	Ground Level	Elevation	7353'
Log Measured From	Ground Level	K.B. -----	
Drilling Measured From	Ground Level	D.F. -----	
		G.L. 7353'	
Date	03-02-06		
Run Number	Two		
Depth Driller	2155'		
Depth Logger	2152'		
Bottom Logged Interval	2150'		
Top Log Interval	Surface Casing		
Casing Driller	8 5/8" @ 227'		
Casing Logger	227'		
Bit Size	7 7/8"		
Type Fluid in Hole	Water		
Density / Viscosity	///		
pH / Fluid Loss	///		
Source of Sample	///		
Rm @ Meas. Temp	///		
Rmf @ Meas. Temp	///		
Rmc @ Meas. Temp	///		
Source of Rmf / Rmc	///		
Rm @ BHT	///		
Time Circulation Stopped	5:00 p.m.		
Time Logger on Bottom	7:15 p.m.		
Maximum Recorded Temperature	116		
Equipment Number	T677		
Location	Trinidad		
Recorded By	L. Smith		
Witnessed By	Mr. Dalton King		

>>> Fold Here >>>

All interpretations are opinions based on inferences from electrical or other measurements and we cannot and do not guarantee the accuracy or correctness of any interpretation, and we shall not, except in the case of gross or willful negligence on our part, be liable or responsible for any loss, costs, damages, or expenses incurred or sustained by anyone resulting from any interpretation made by any of our officers, agents or employees. These interpretations are also subject to our general terms and conditions set out in our current Price Schedule.

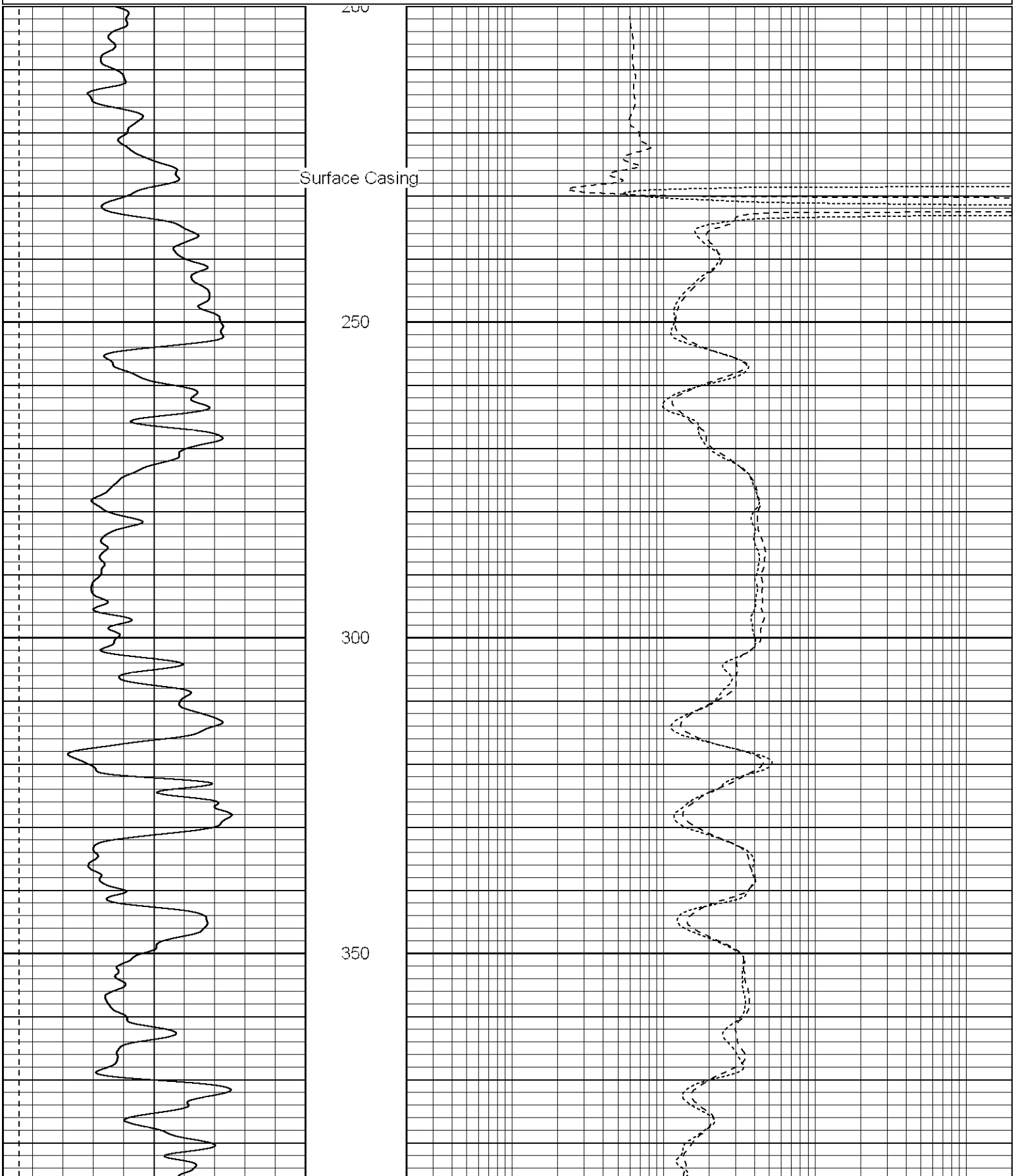
Comments

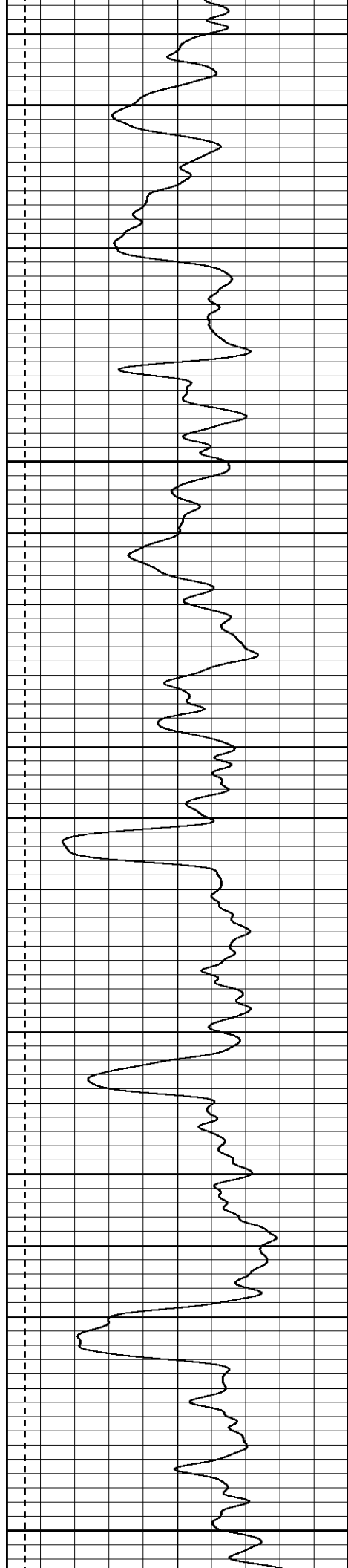
Up Rancho Escondido take first left, will be second location.

Patterson

Main Pass

0	GR (GAPI)	200	0.2	RILD (Ohm-m)	2000
-200	SP (mV)	0	0.2	RILM (Ohm-m)	2000
			0.2	RLL3 (Ohm-m)	2000





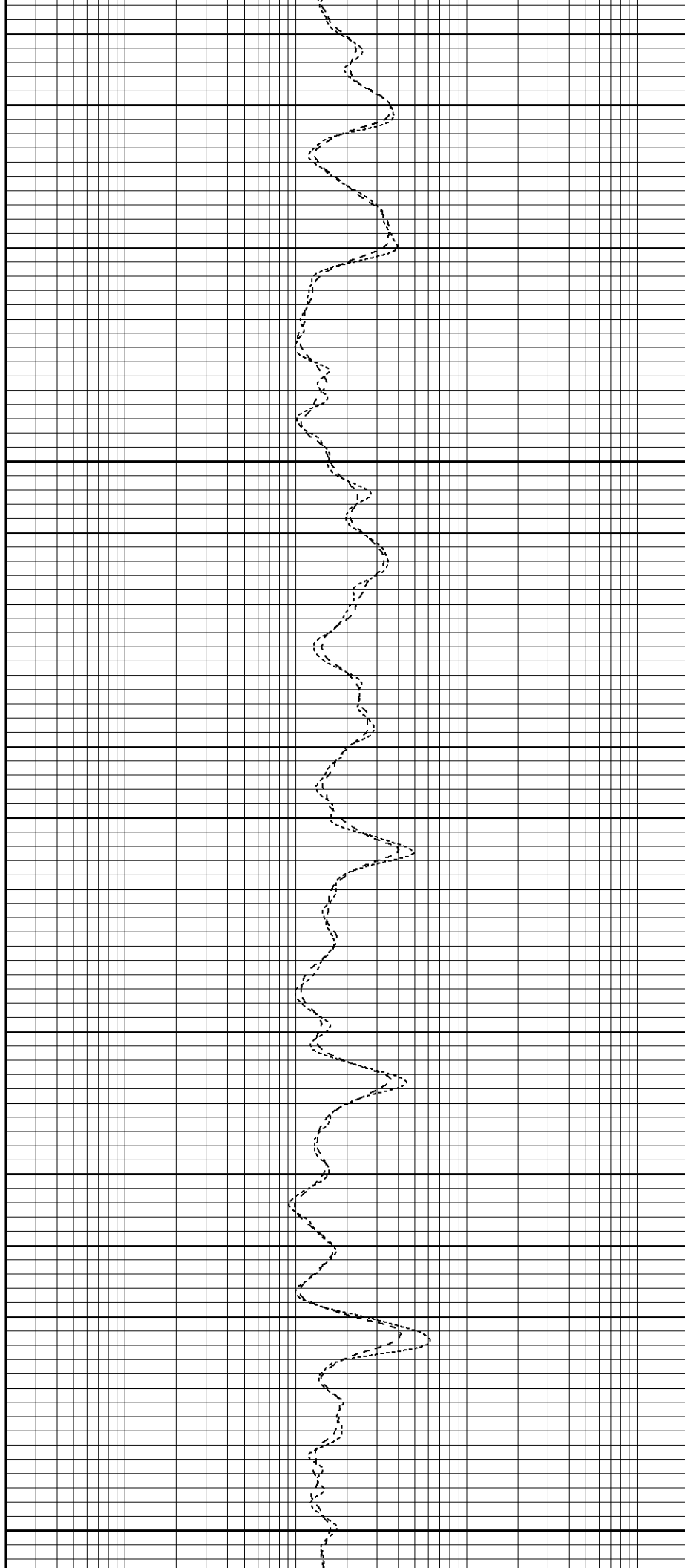
400

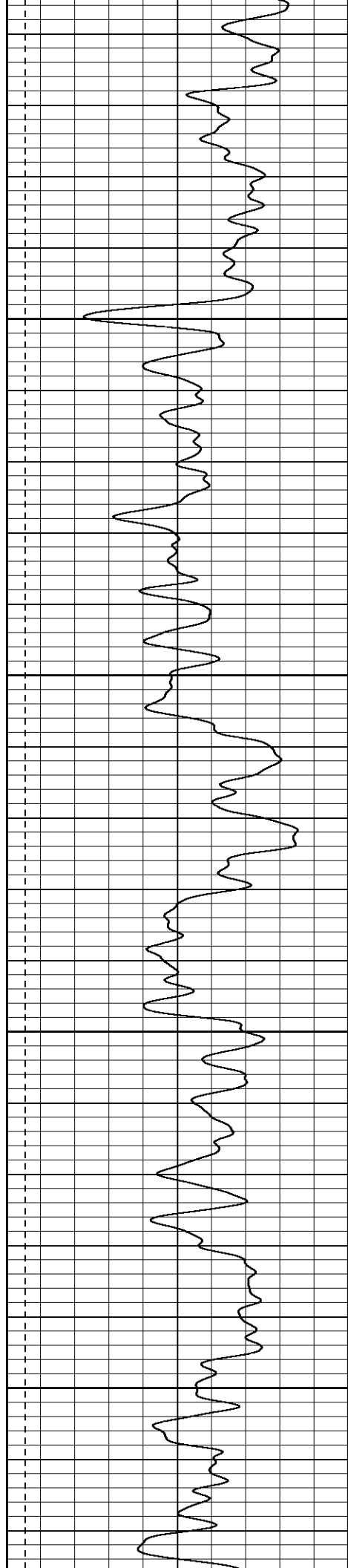
450

500

550

600



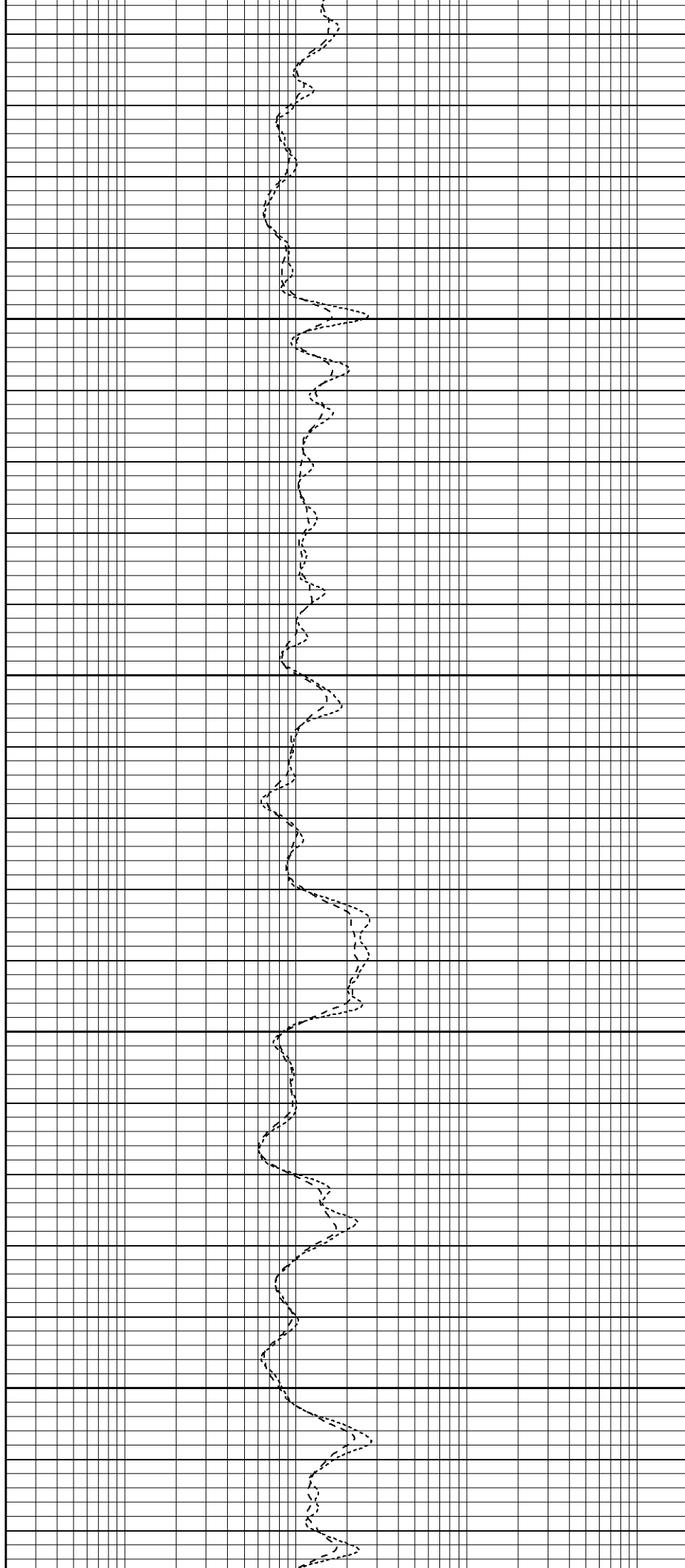


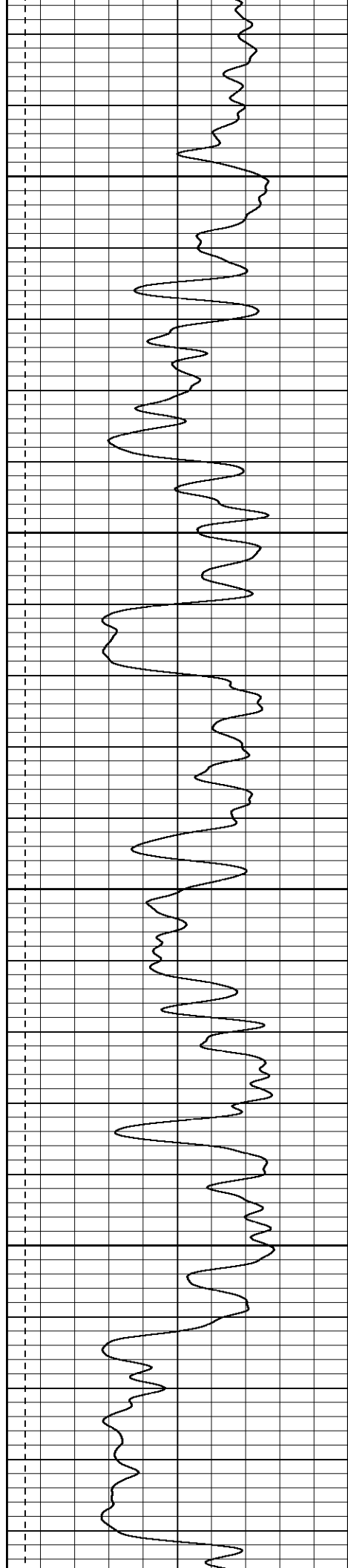
650

700

750

800



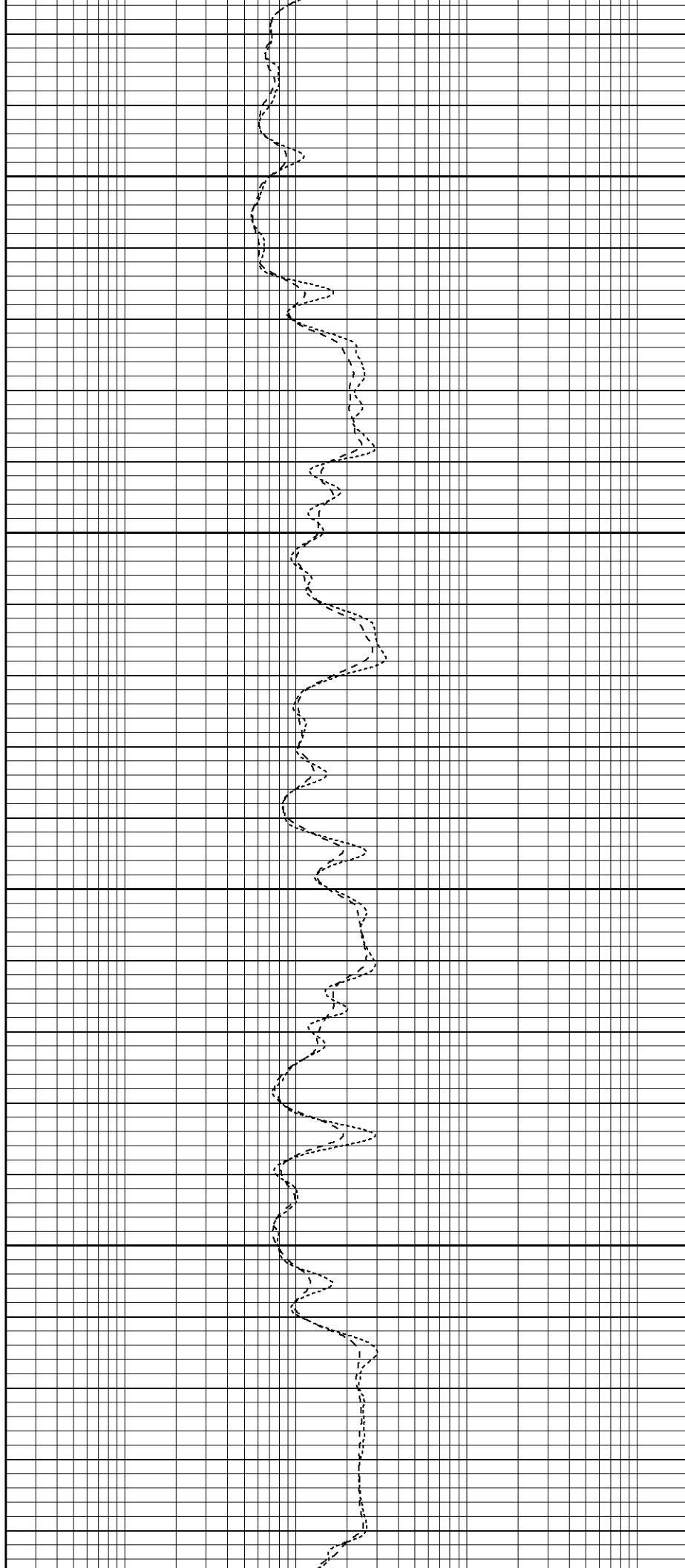


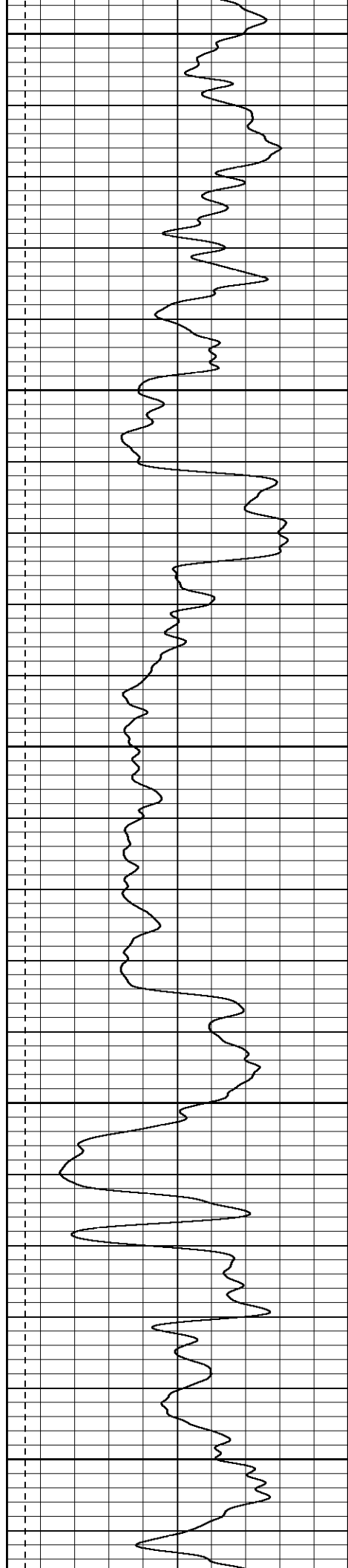
850

900

950

1000





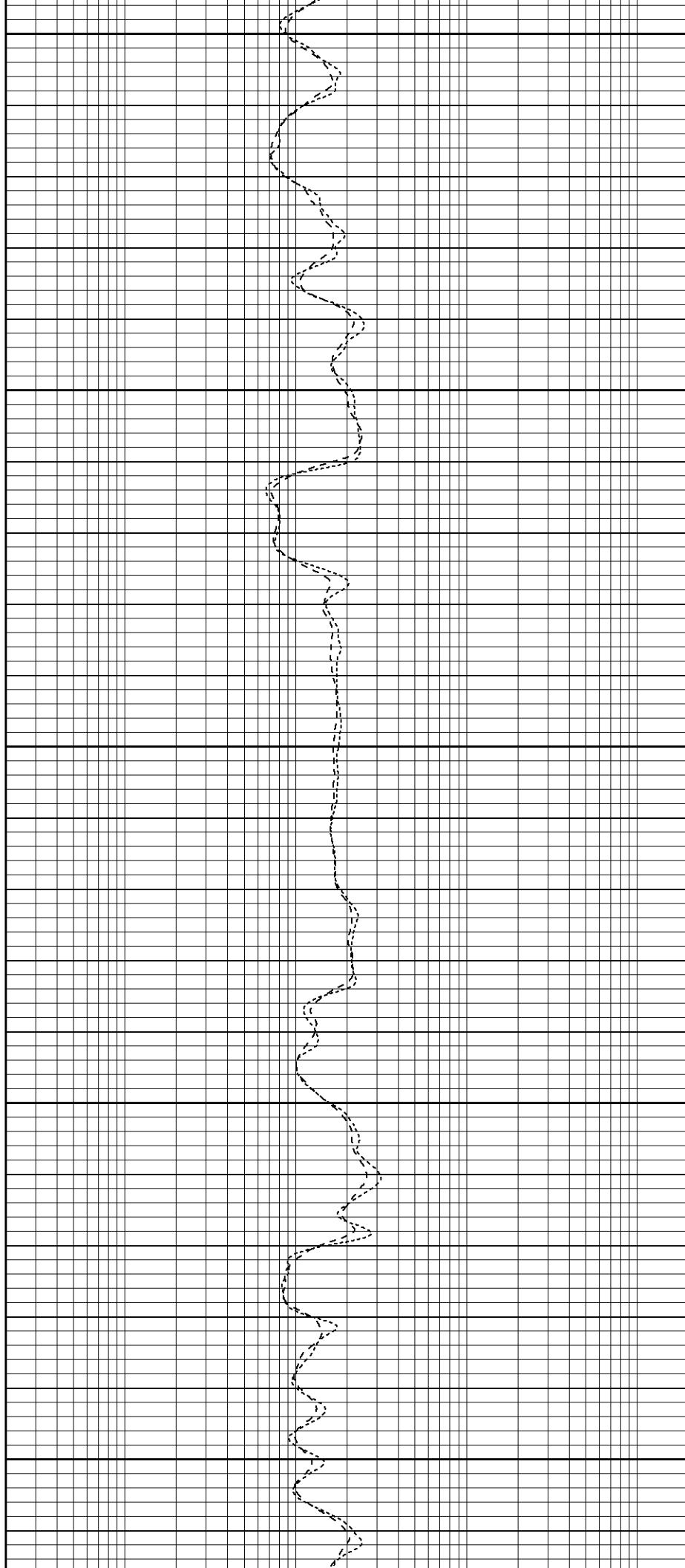
1050

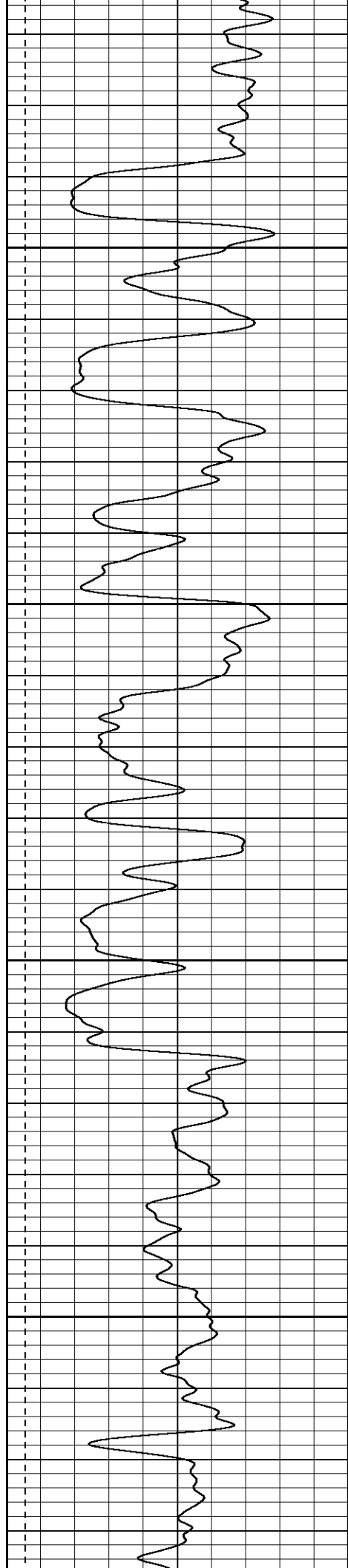
1100

1150

1200

1250



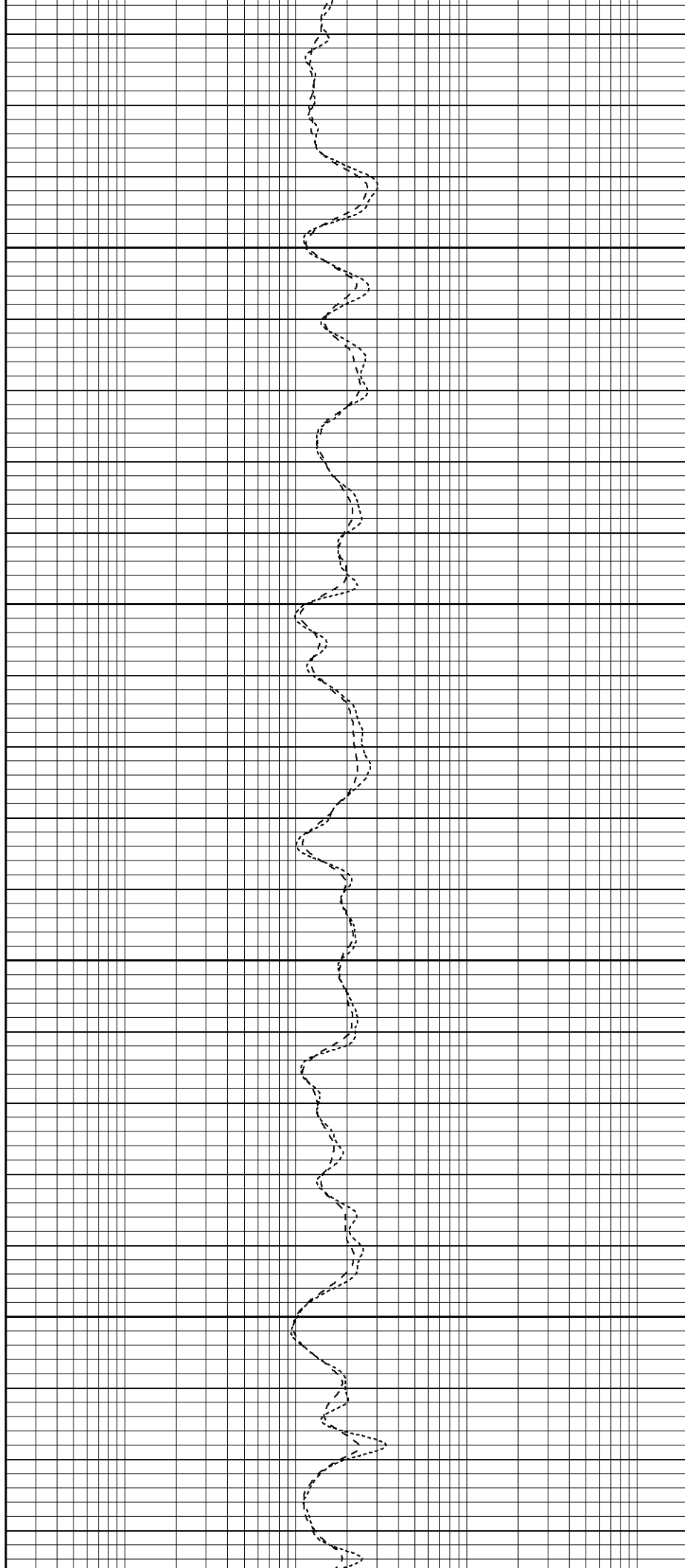


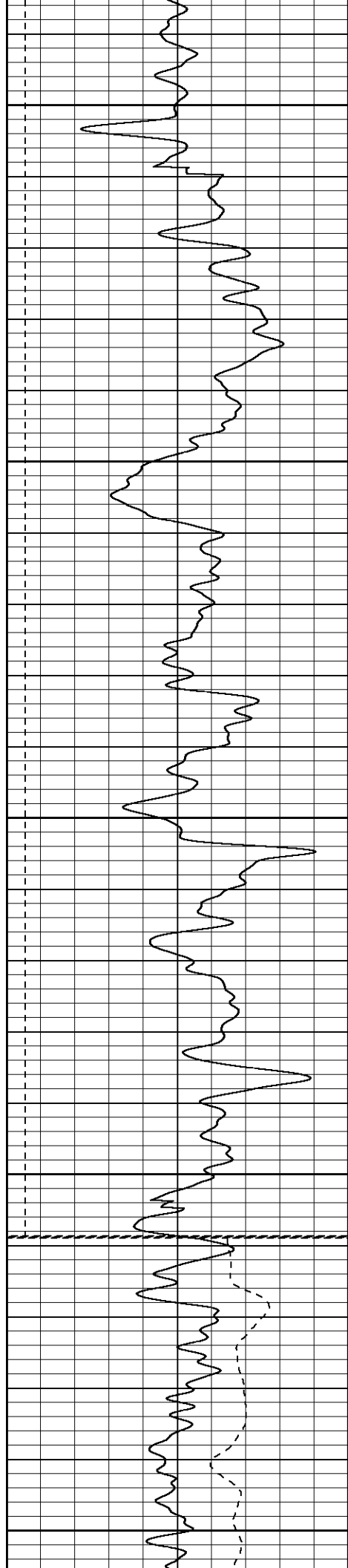
1300

1350

1400

1450





1500

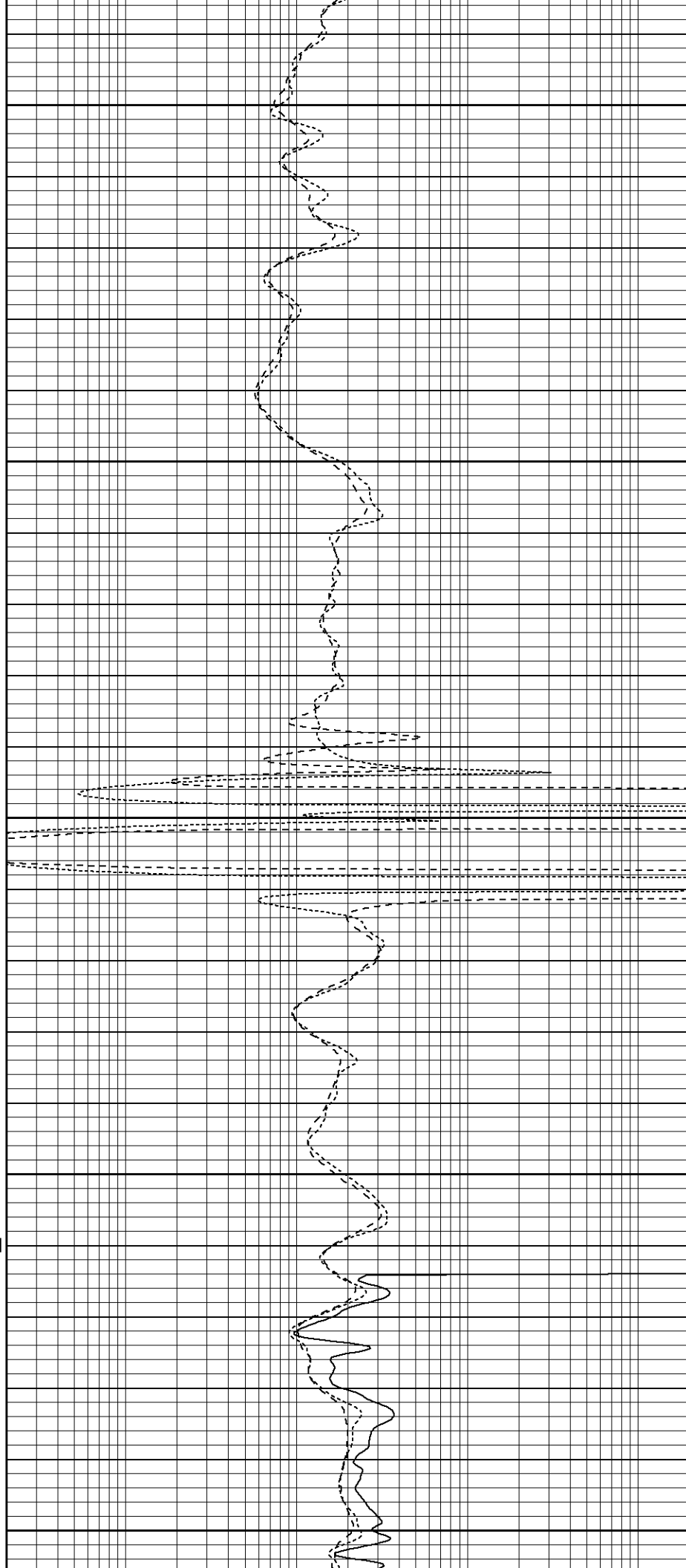
1550

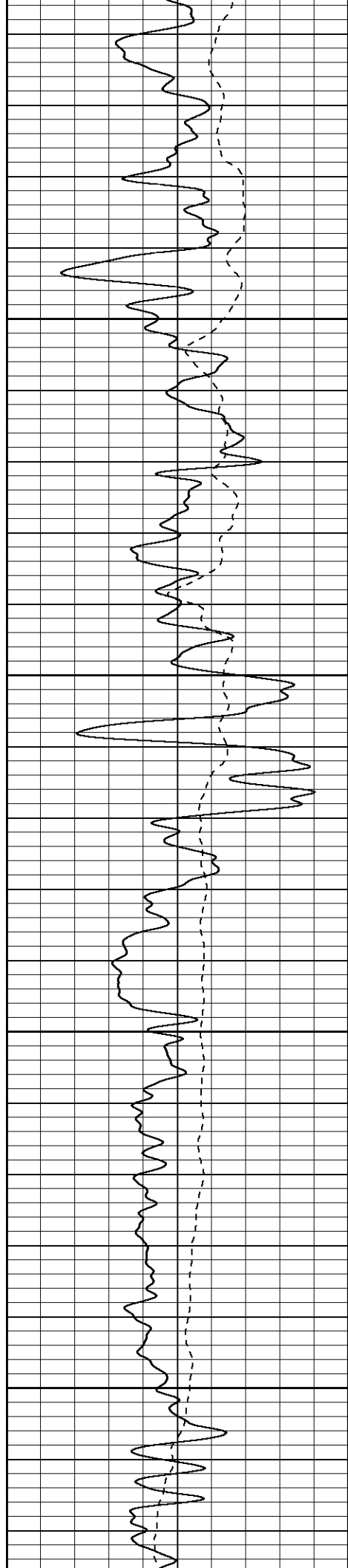
1600

1650

1700

Fluid Level



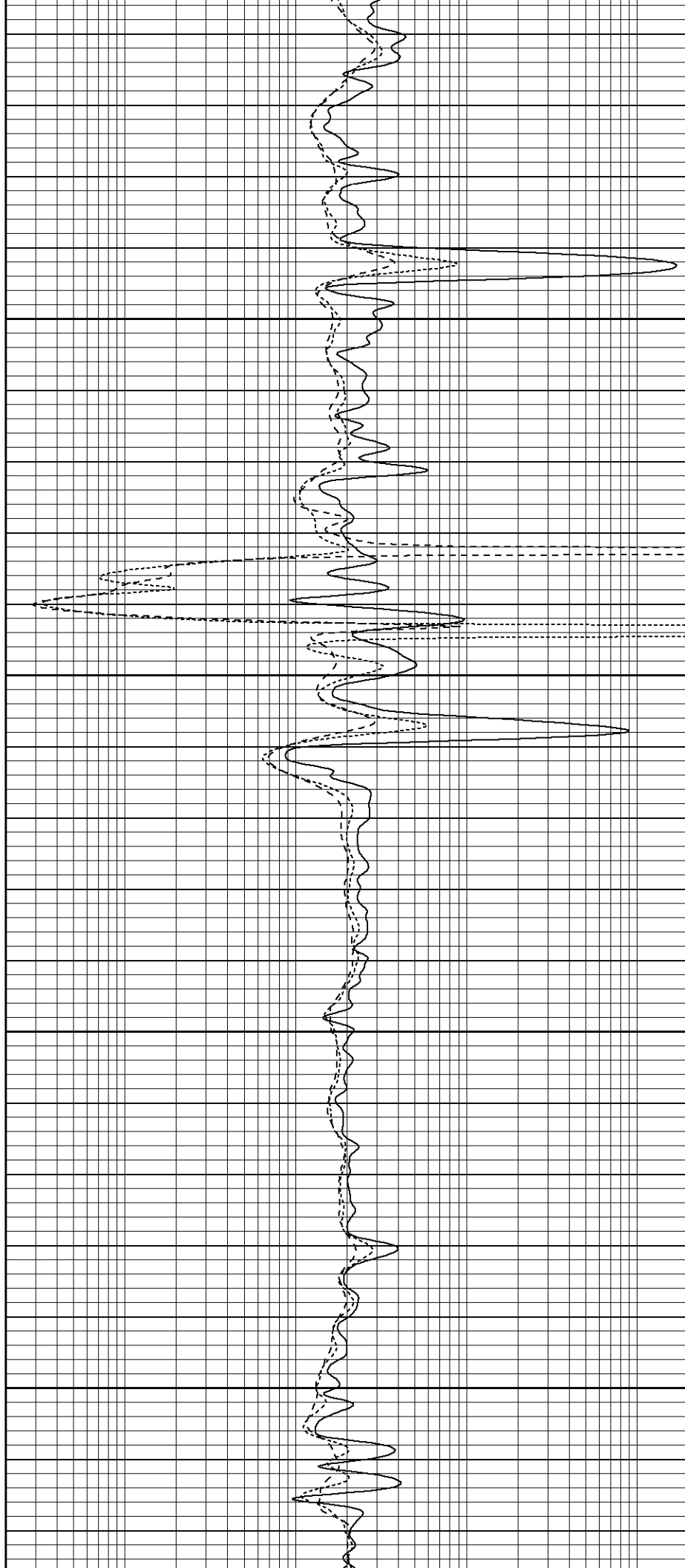


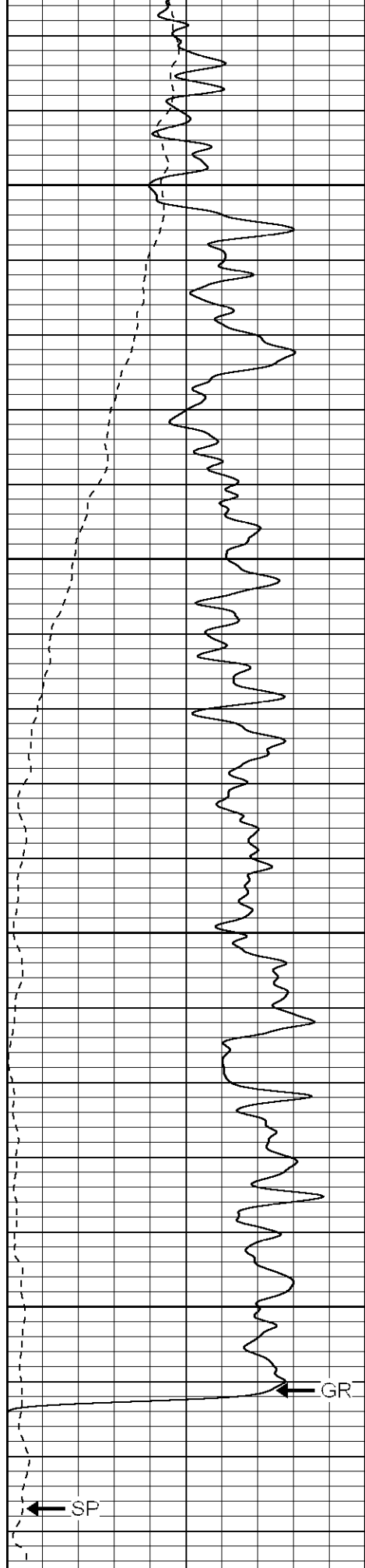
1750

1800

1850

1900





1950

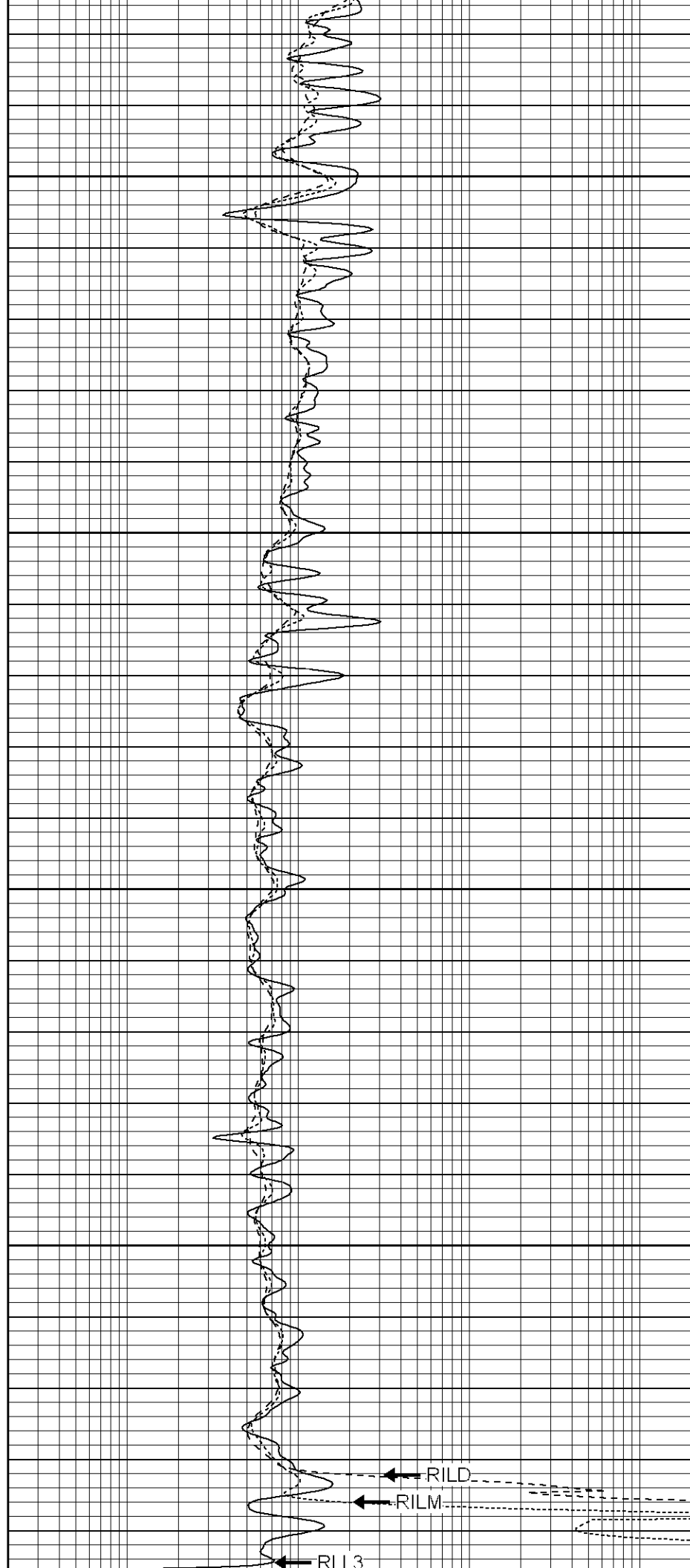
2000

2050

2100

GR

SP



RILD

RILM

RI13

0	GR (GAPI)	200
-200	SP (mV)	0
<hr/>		

0.2	RILD (Ohm-m)	2000
0.2	RILM (Ohm-m)	2000
0.2	RLL3 (Ohm-m)	2000
<hr/>		

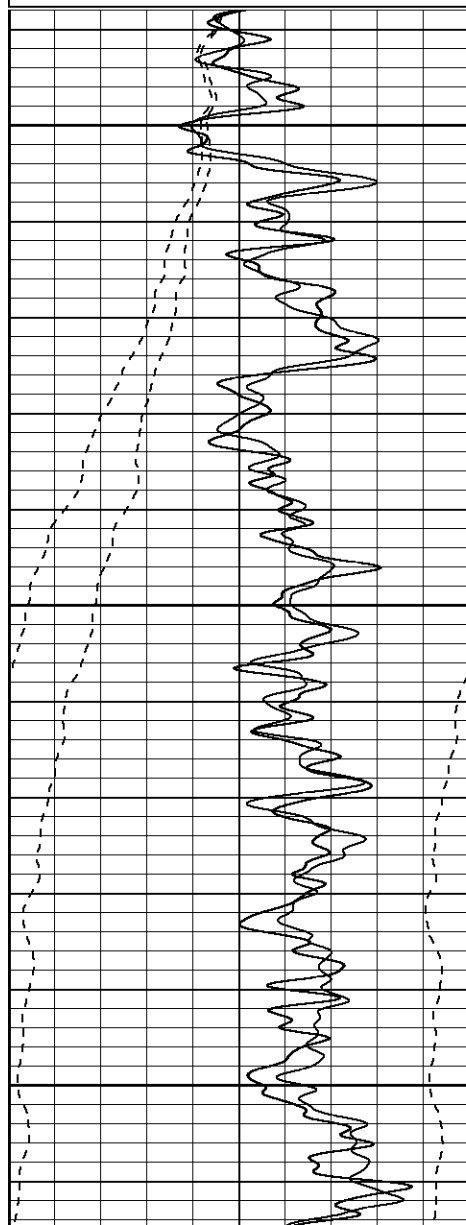
Patterson

Repeat Pass

Database File: xtoge1906.db
 Dataset Pathname: pass3.1
 Presentation Format: dil
 Dataset Creation: Thu Mar 02 21:24:25 2006 by Calc Warrior 7.0 STD Ope
 Charted by: Depth in Feet scaled 1:240

0	GR (GAPI)	200
-200	SP (mV)	0
-200	SP-repeat (mV)	0
0	GR-repeat (GAPI)	200

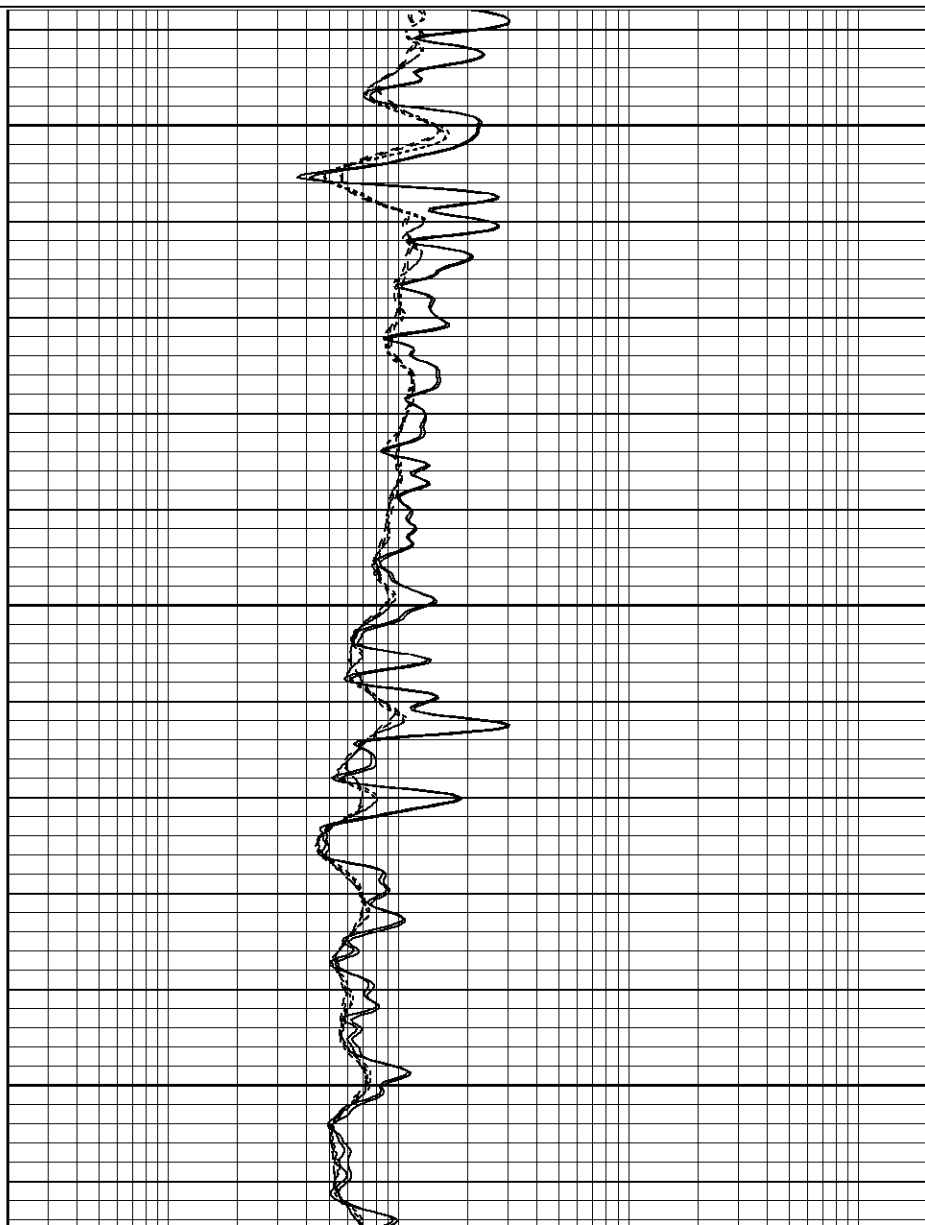
0.2	RILD (Ohm-m)	2000
0.2	RILM (Ohm-m)	2000
0.2	RLL3 (Ohm-m)	2000
0.2	RLL3-repeat (Ohm-m)	2000
0.2	RILM-repeat (Ohm-m)	2000
0.2	RILD-repeat (Ohm-m)	2000

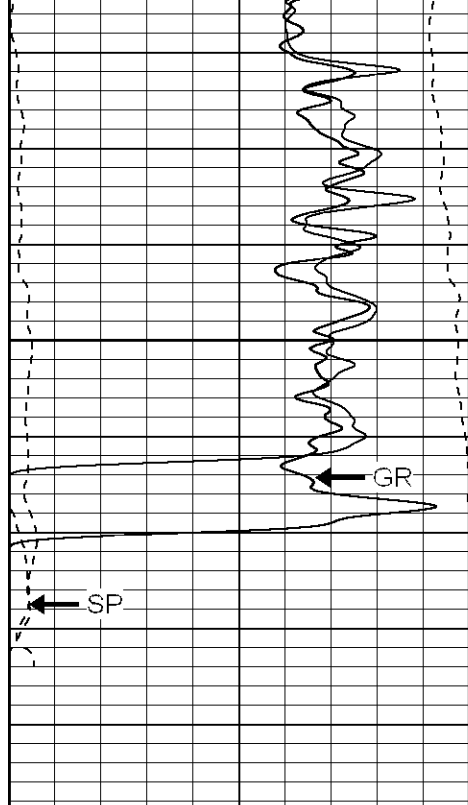


1950

2000

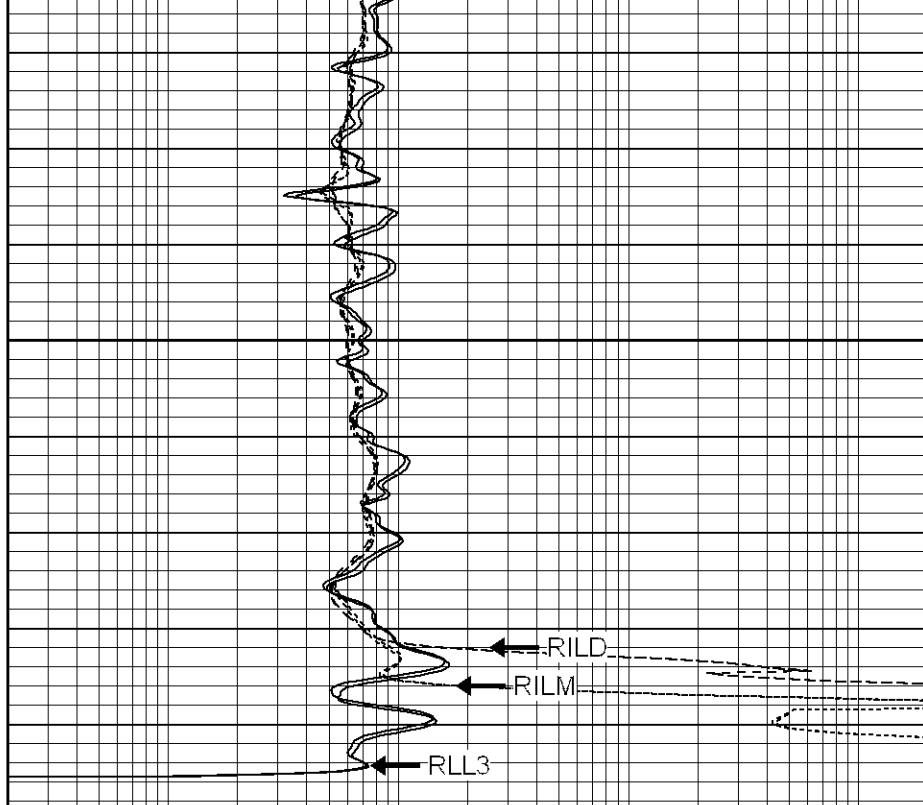
2050





2100

0	GR (GAPI)	200
-200	SP (mV)	0
-200	SP-repeat (mV)	0
0	GR-repeat (GAPI)	200



0.2	RILD (Ohm-m)	2000
0.2	RILM (Ohm-m)	2000
0.2	RLL3 (Ohm-m)	2000
0.2	RLL3-repeat (Ohm-m)	2000
0.2	RILM-repeat (Ohm-m)	2000
0.2	RILD-repeat (Ohm-m)	2000

Dual Induction Calibration Report

Serial-Model: 5375-G
 Surface Cal Performed: Mon Feb 13 14:55:47 2006
 Downhole Cal Performed: Thu Mar 02 18:36:13 2006

Compensated Density Calibration Report

Serial-Model: 902-2.75POH
 Source / Verifier: /
 Master Calibration Performed: Tue Feb 28 01:19:40 2006

Master Calibration

	Density		Far Detector	Near Detector	
Magnesium	1.710	g/cc	937.76	456.53	cps
Aluminum	2.590	g/cc	165.85	225.46	cps
Spine Angle = 67.84			Density/Spine Ratio = 0.470		
	Size		Reading		
Small Ring	8.65	in	2.31	V	
Large Ring	17.00	in	4.47	V	

Neutron Calibration Report

Serial Number: 802
 Tool Model: 2.75POH

Tool Model: 2.75POH
 Performed: Mon Feb 27 09:32:04 2006

Calibrator Value: 1 NAPI

Calibrator Reading: 1 cps

Sensitivity: 1 NAPI/cps

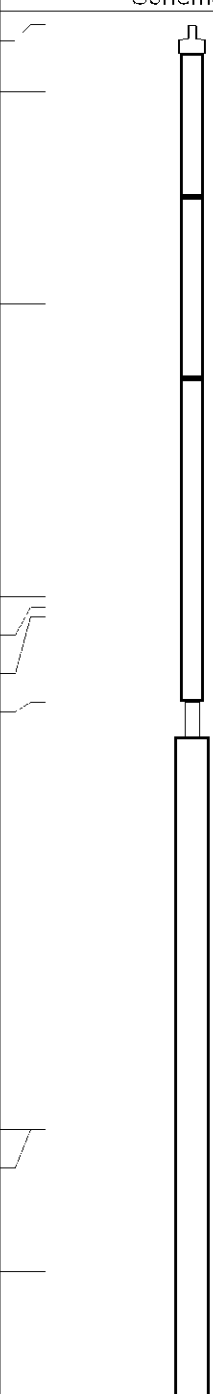
Gamma Ray Calibration Report


Serial Number: 804
 Tool Model: 2.75POH
 Performed: Tue Feb 28 13:45:51 2006

Calibrator Value: 1.0 GAPI

Background Reading: 0.0 cps
 Calibrator Reading: 1.0 cps

Sensitivity: 0.8000 GAPI/cps

Sensor	Offset (ft)	Schematic	Description	Len (ft)	OD (in)	Wt (lb)
CHD	39.37		None	0.75	1.50	5.00
GR	37.64		GR-2.75POH (804) Probe	3.73	2.75	43.00
NEU	32.10		NEU-2.75POH (802) Probe Epithermal	4.75	2.75	58.00
LSD	24.47		CDL-2.75POH (902) Probe	8.43	2.75	106.00
DCAL	24.19		Probe	0.89	3.50	20.00
SSD	23.95					
10pin	21.72					
CILD	10.60		DIL-G (5375) Gearhart	20.83	4.00	345.00
SP	10.60					
CILM	6.89					

RLL3	1.70				
		Dataset: /field/well/run1/_plots_/_jobs_/dil Total Length: 39.37 ft Total Weight: 577.00 lb O.D. 4.00 in			