



SUPERIOR

Black Lick, Pa.  
Mercer, Pa.  
Wooster, Oh.  
Cleveland, Ok.  
Trinidad, Co.

Well Apache Canyon 26-02

Field	Purgatorie River
1	1
2	2
3	3
4	4
5	5
6	6
7	7
8	8
9	9
10	10
11	11
12	12
13	13
14	14
15	15
16	16
17	17
18	18
19	19
20	20
21	21
22	22
23	23
24	24
25	25
26	26
27	27
28	28
29	29
30	30
31	31
32	32
33	33
34	34
35	35
36	36
37	37
38	38
39	39
40	40
41	41
42	42
43	43
44	44
45	45
46	46
47	47
48	48
49	49
50	50
51	51
52	52
53	53
54	54
55	55
56	56
57	57
58	58
59	59
60	60
61	61
62	62
63	63
64	64
65	65
66	66
67	67
68	68
69	69
70	70
71	71
72	72
73	73
74	74
75	75
76	76
77	77
78	78
79	79
80	80
81	81
82	82
83	83
84	84
85	85
86	86
87	87
88	88
89	89
90	90
91	91
92	92
93	93
94	94
95	95
96	96
97	97
98	98
99	99
100	100

County Las Animas State CO

Location: AP| #: 05 071 08813 00

234' FNL &amp; 2495' FEL

SEC 26 TWP 34S RGE 68W

Elevation \_\_\_\_\_  
K.B. -----

Permanent Datum	Ground Level	Elevation	80.44
Log Measured From	Ground Level		
Drilling Measured From	Ground Level		

G.L. 8044

Date \_\_\_\_\_

Run Number

## Depth Driller

#### Depth Logger

Bottom Layer

Open Hole Size

Type Fluid

Density / Viscosity

Max. Recorded Temp.

Estimated Cement 10%

Time | order on Bottom

Equipment Number

Location

Recorded By

Witnessed By \_\_\_\_\_

Bole	Pit
Bole Number	Pit

1	2	3	4	5	6	7	8	9	10	11	12	13	14	15	16	17	18	19	20	21	22	23	24	25	26	27	28	29	30	31	32	33	34	35	36	37	38	39	40	41	42	43	44	45	46	47	48	49	50	51	52	53	54	55	56	57	58	59	60	61	62	63	64	65	66	67	68	69	70	71	72	73	74	75	76	77	78	79	80	81	82	83	84	85	86	87	88	89	90	91	92	93	94	95	96	97	98	99	100
---	---	---	---	---	---	---	---	---	----	----	----	----	----	----	----	----	----	----	----	----	----	----	----	----	----	----	----	----	----	----	----	----	----	----	----	----	----	----	----	----	----	----	----	----	----	----	----	----	----	----	----	----	----	----	----	----	----	----	----	----	----	----	----	----	----	----	----	----	----	----	----	----	----	----	----	----	----	----	----	----	----	----	----	----	----	----	----	----	----	----	----	----	----	----	----	----	----	----	-----

--	--

[illegible][illegible]

Surface String	
----------------	--

Prot. String	
--------------	--

Production String	

Liner	
-------	--

<<< Fold Here >>>

All interpretations are opinions based on inferences from electrical or other measurements and we cannot and do not guarantee the accuracy or correctness of any interpretation, and we shall not, except in the case of gross or willful negligence on our part, be liable or responsible for any loss, costs, damages, or expenses incurred or sustained by anyone resulting from any interpretation made by any of our officers, agents or employees. These interpretations are also subject to our general terms and conditions set out in our current Price Schedule.

---

Comments

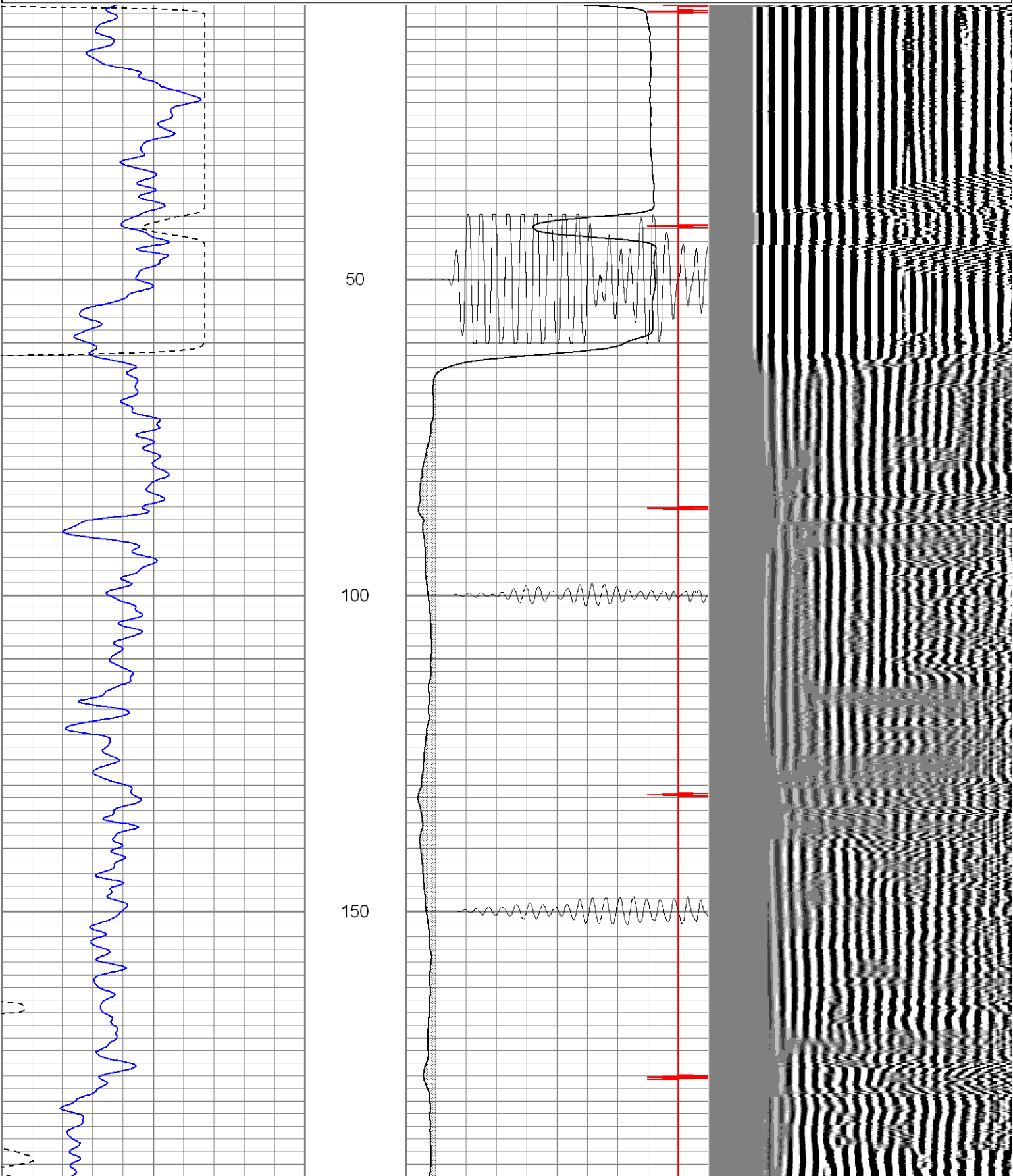
Bosque before Weston, stay on main road approx. 8 miles, turn left at Monte Leone Canyon, then take first right, location is at end of road.

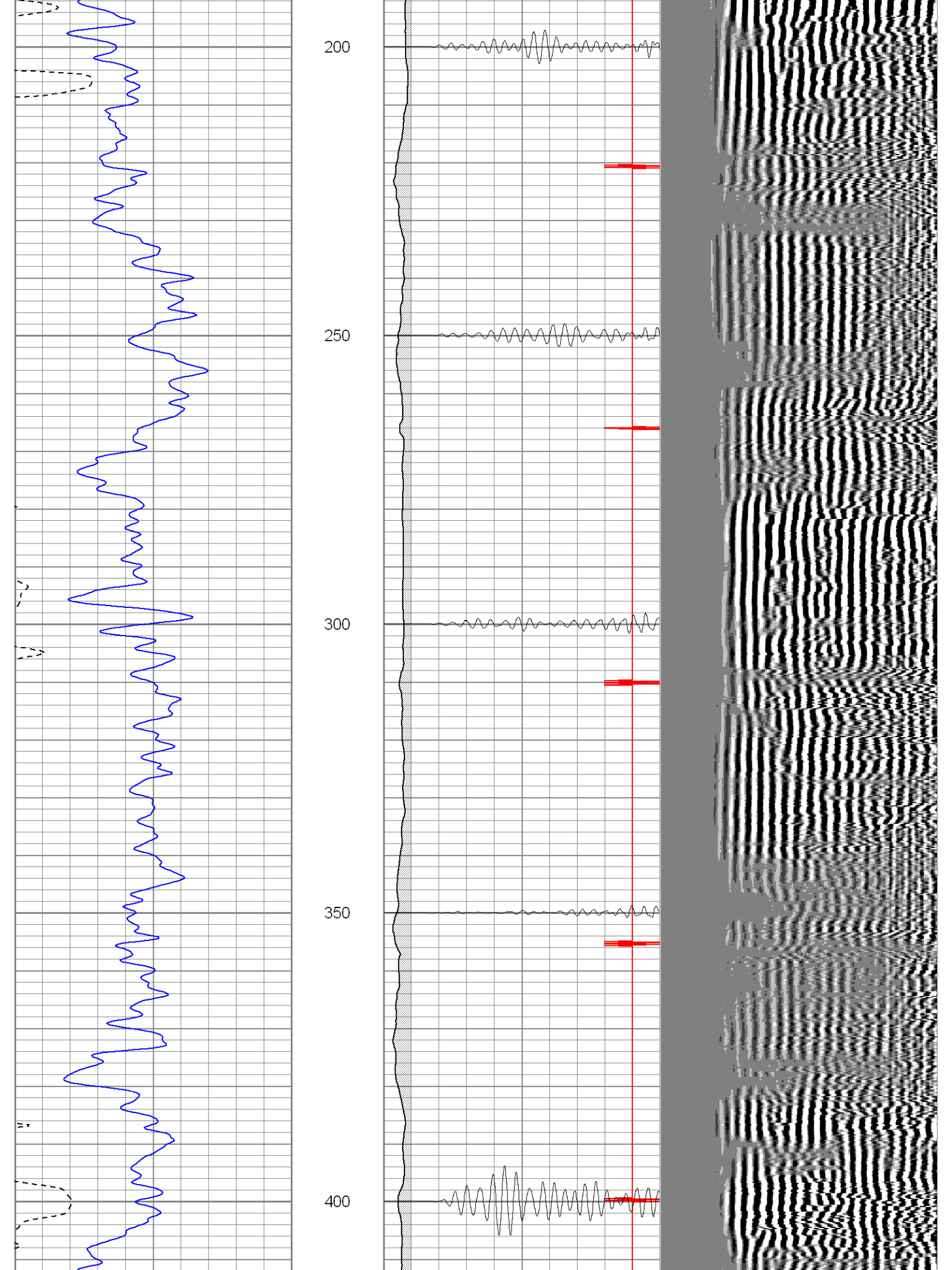


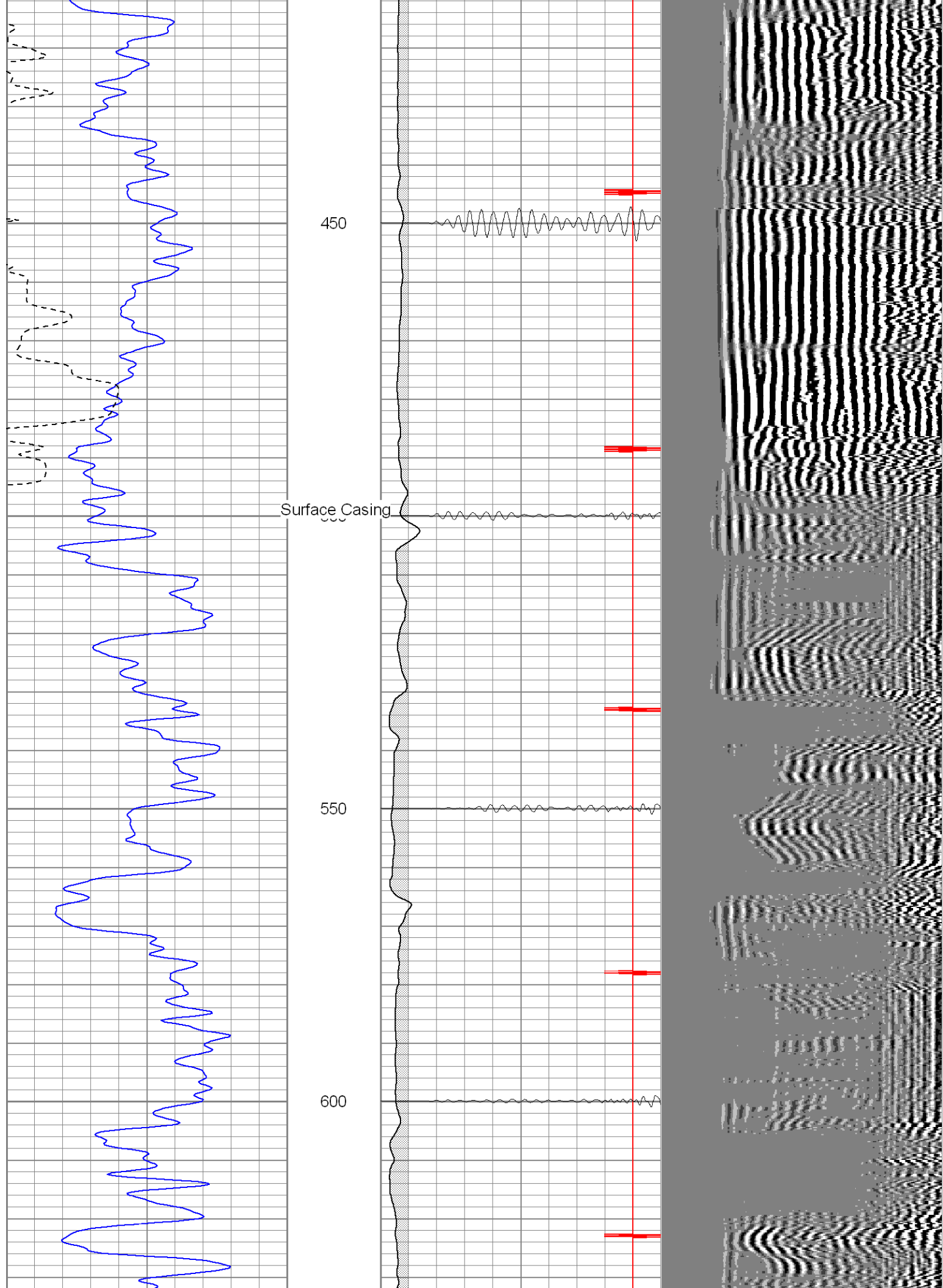
Black Lick, Pa.  
Mercer, Pa.  
Wooster, Oh.  
Cleveland, Ok.  
Trinidad, Co.

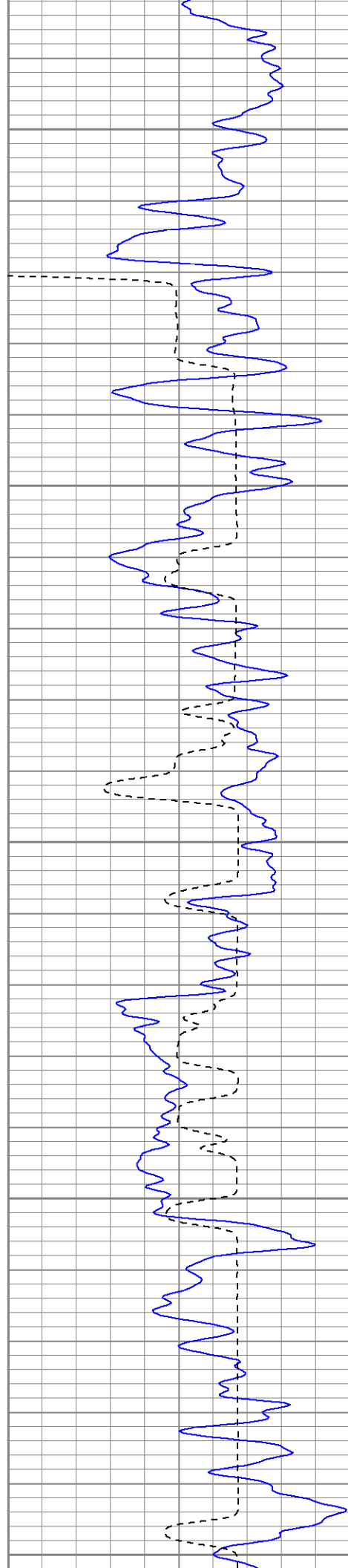
# Main Pass

0	GR (GAPI)	200	0	AMP3 (mV)	100	200	Variable Density	1200
400	TT3 (usec)	200	18	CCL	-2			
			200	CBL5	1200			









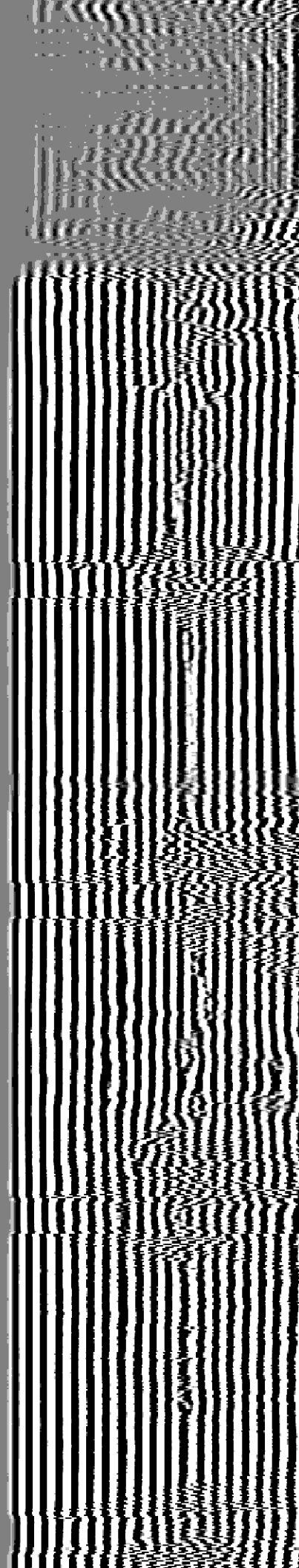
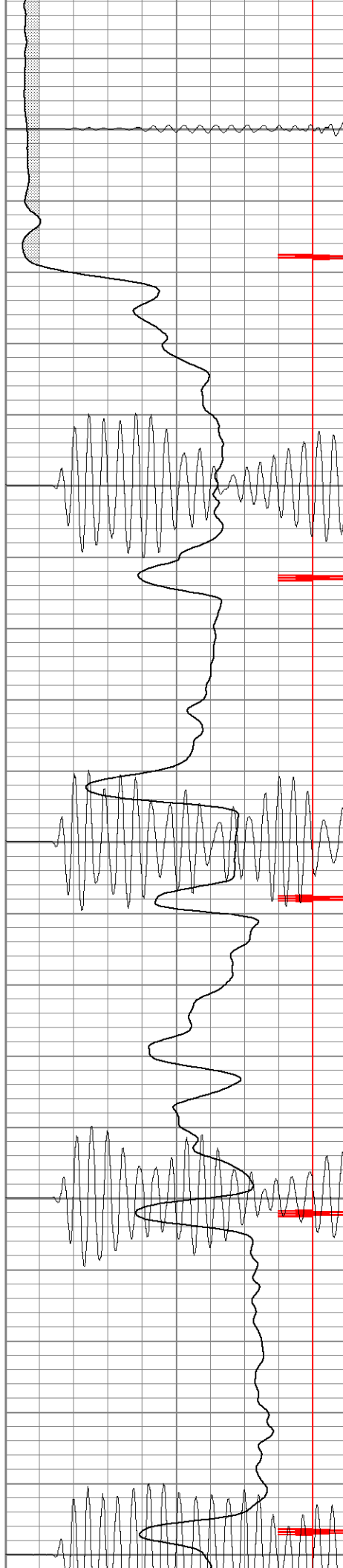
650

700

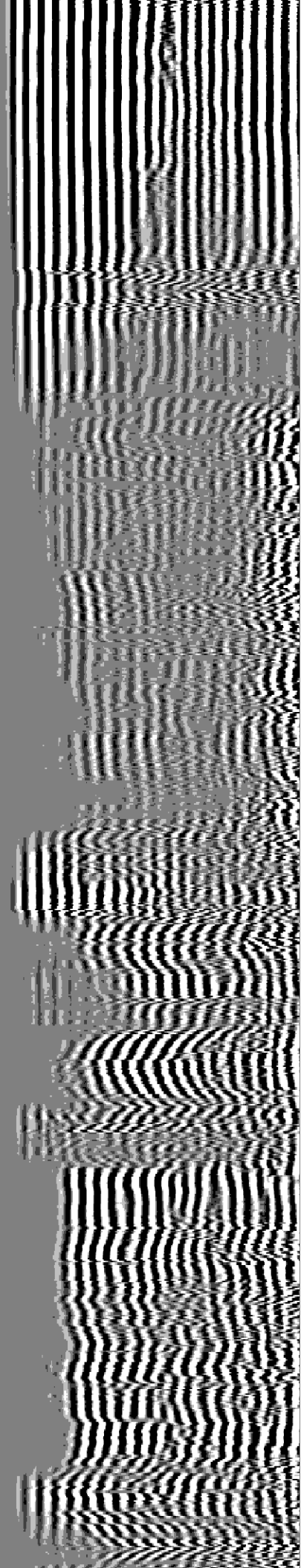
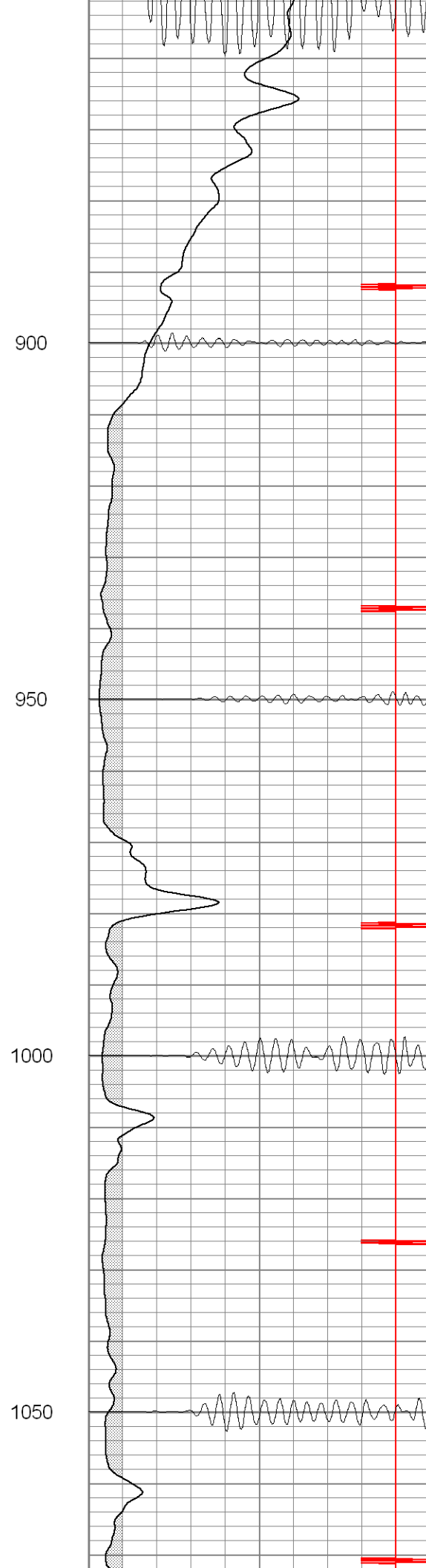
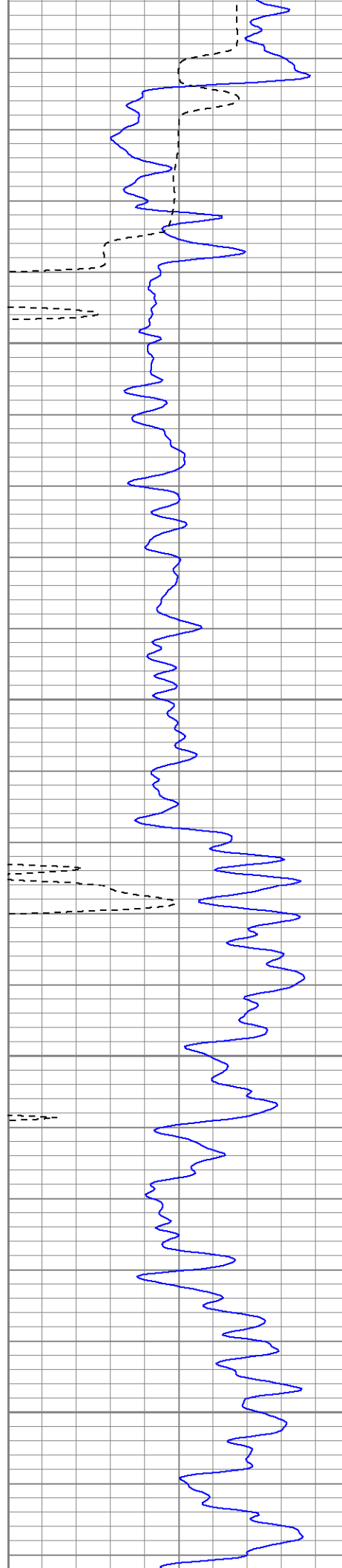
750

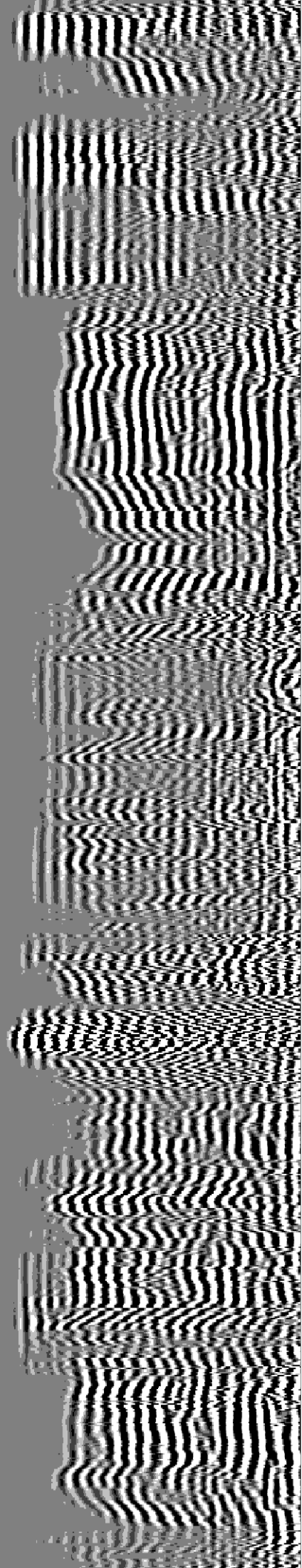
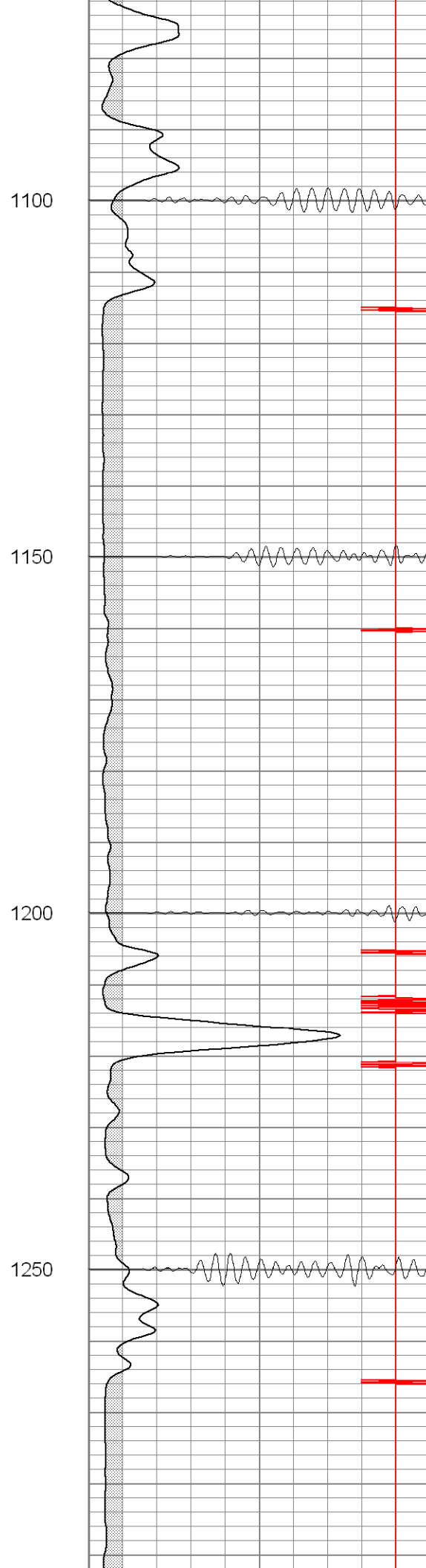
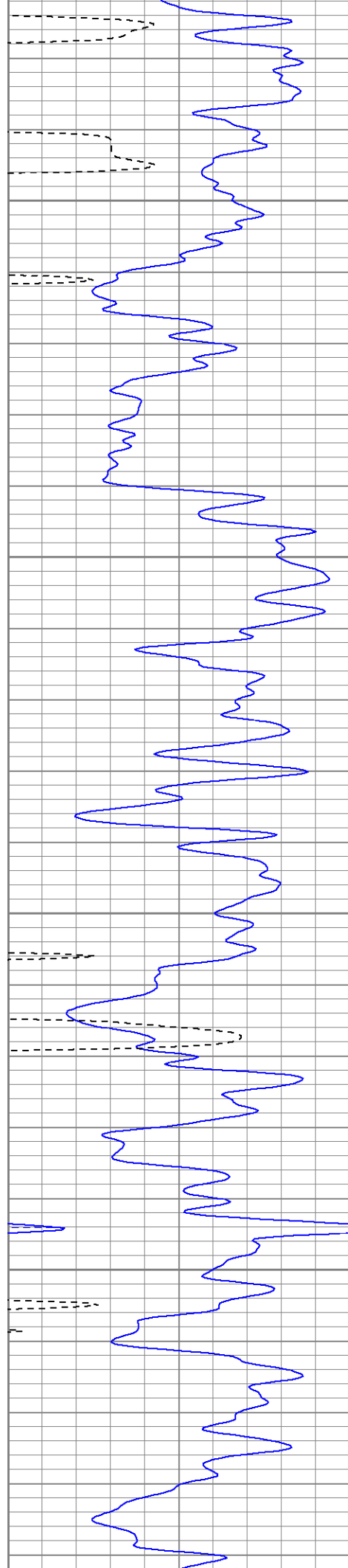
800

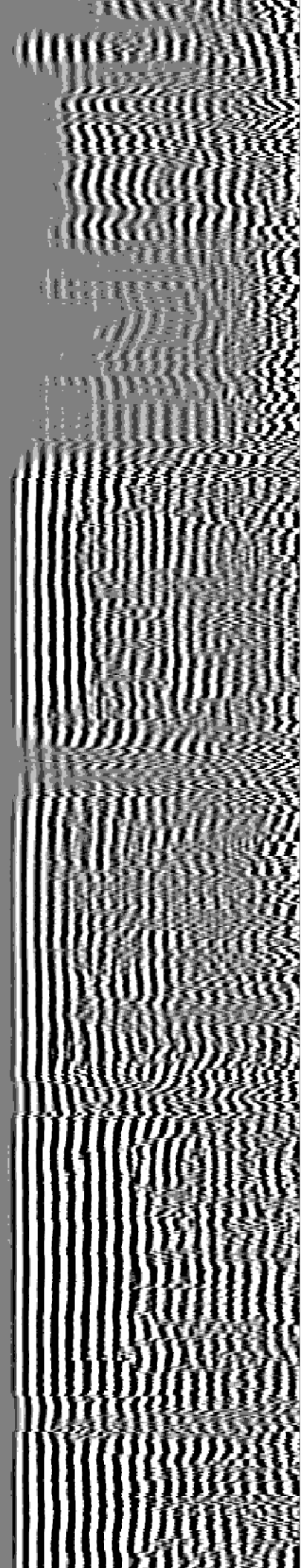
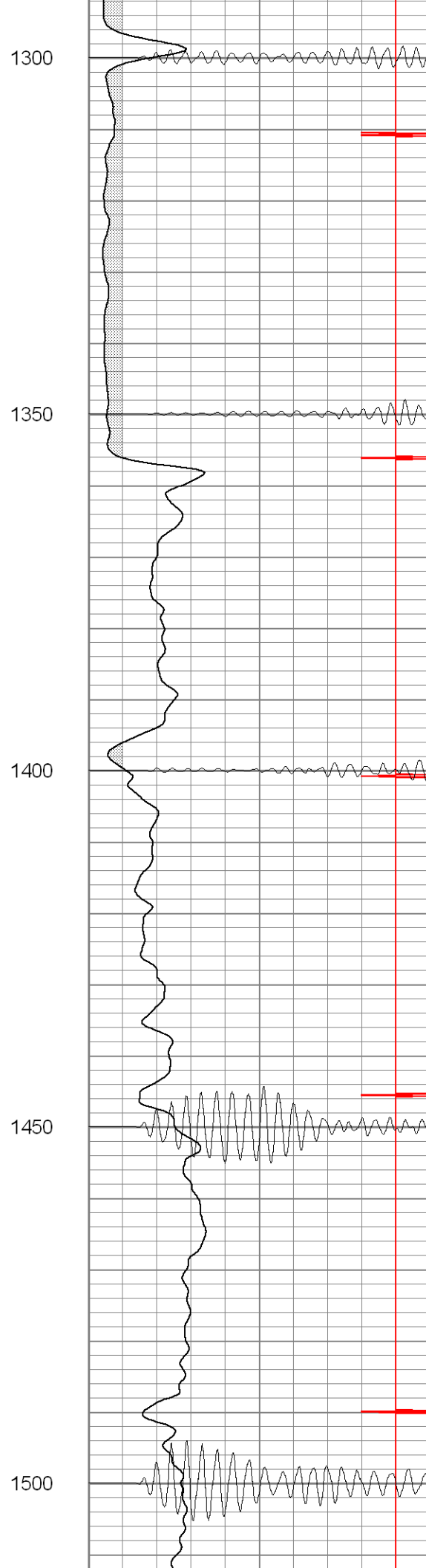
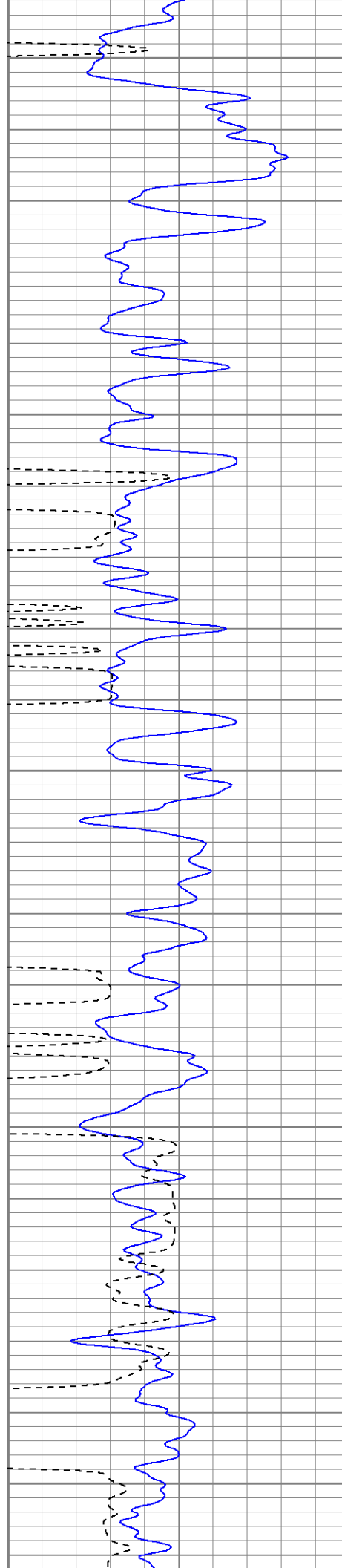
850



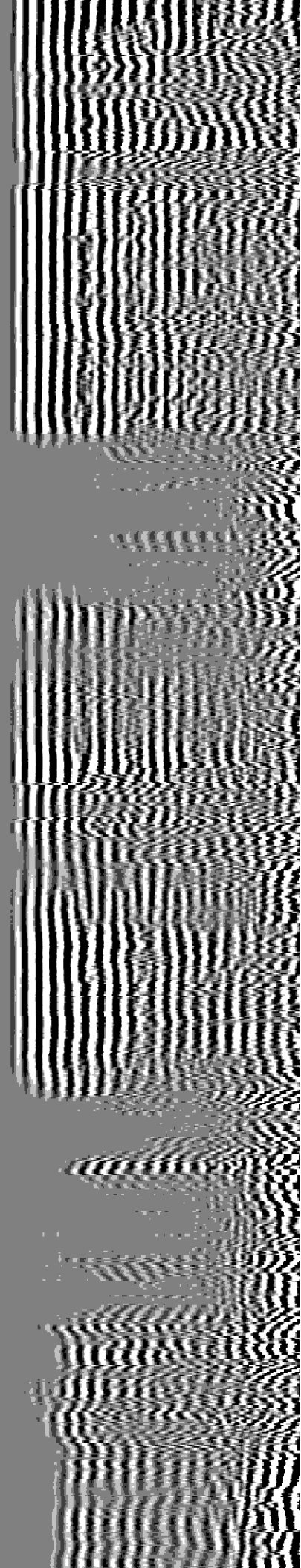
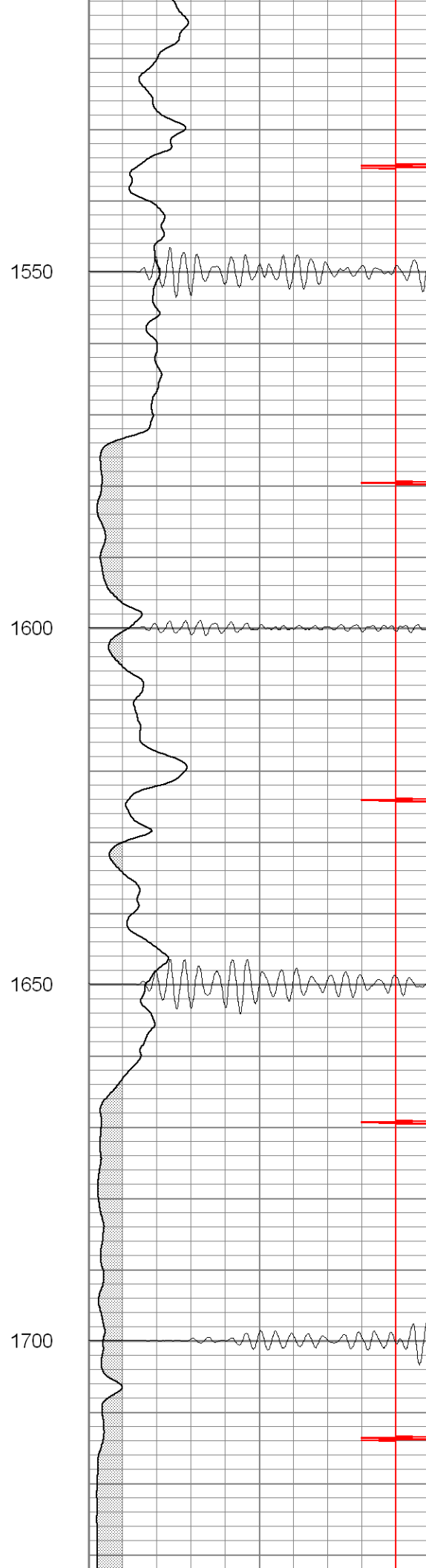
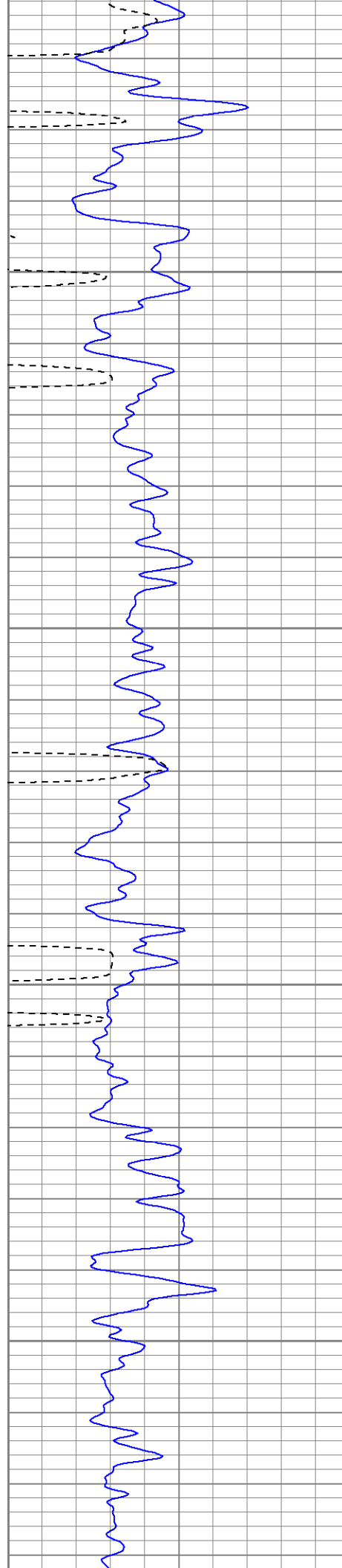


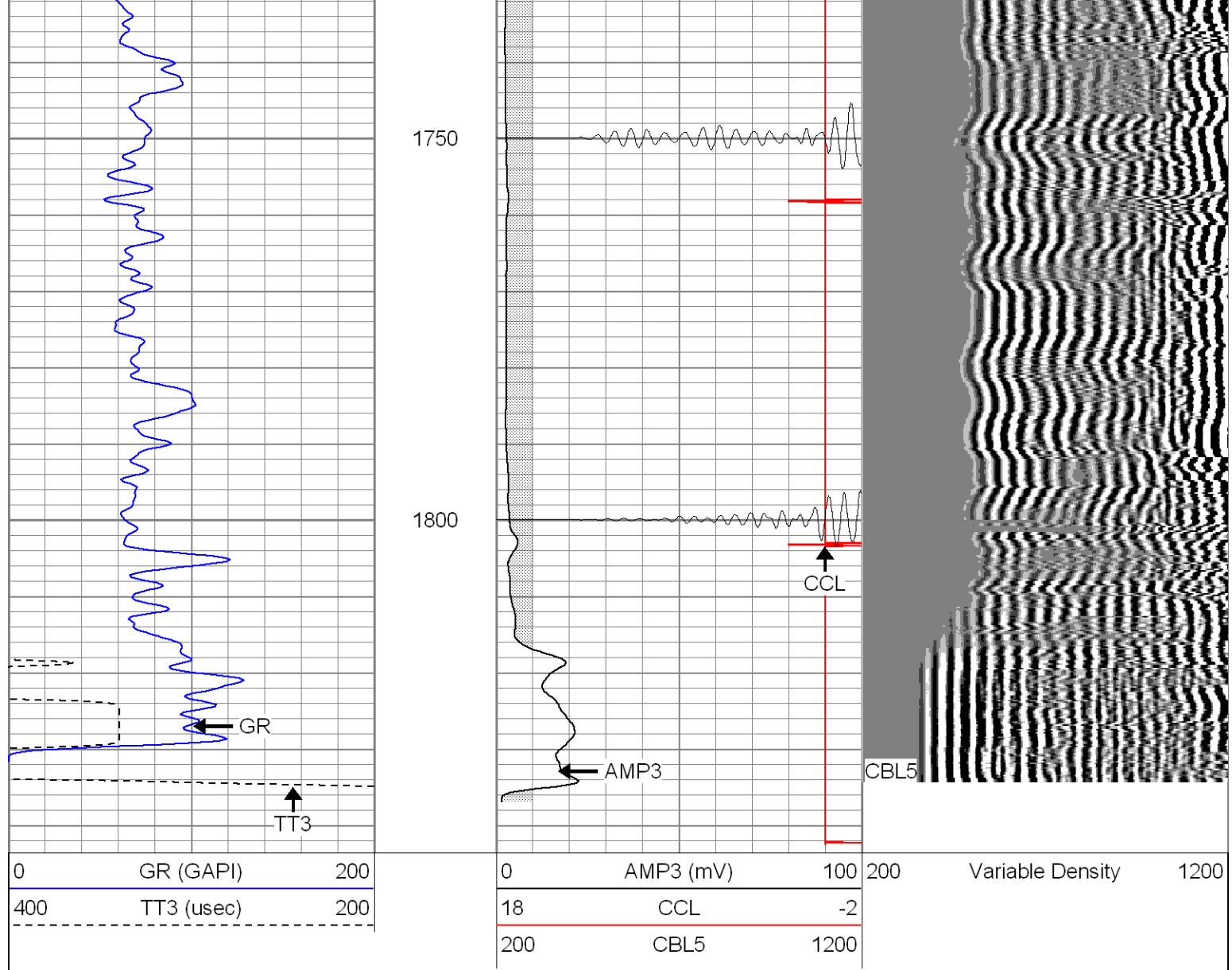










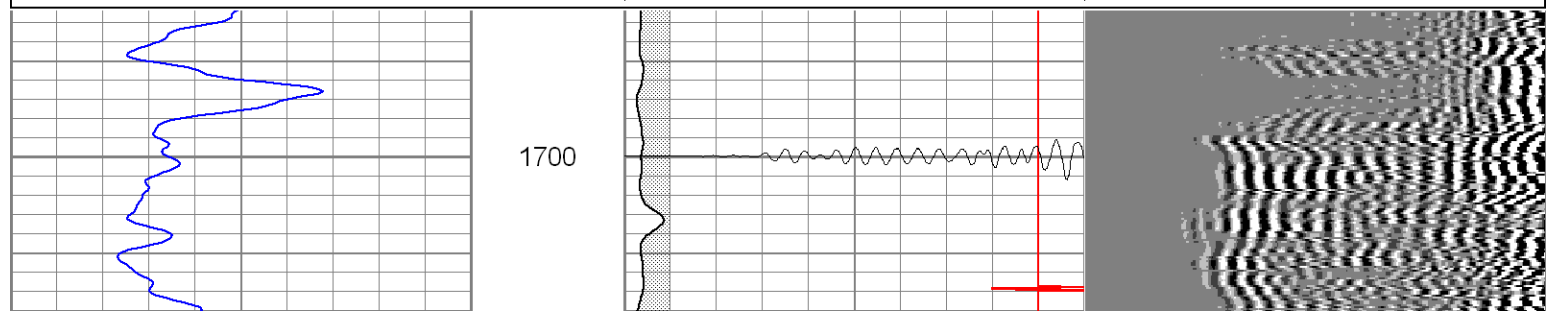
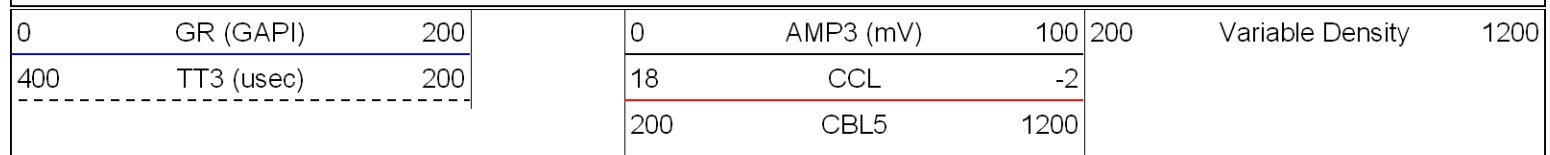


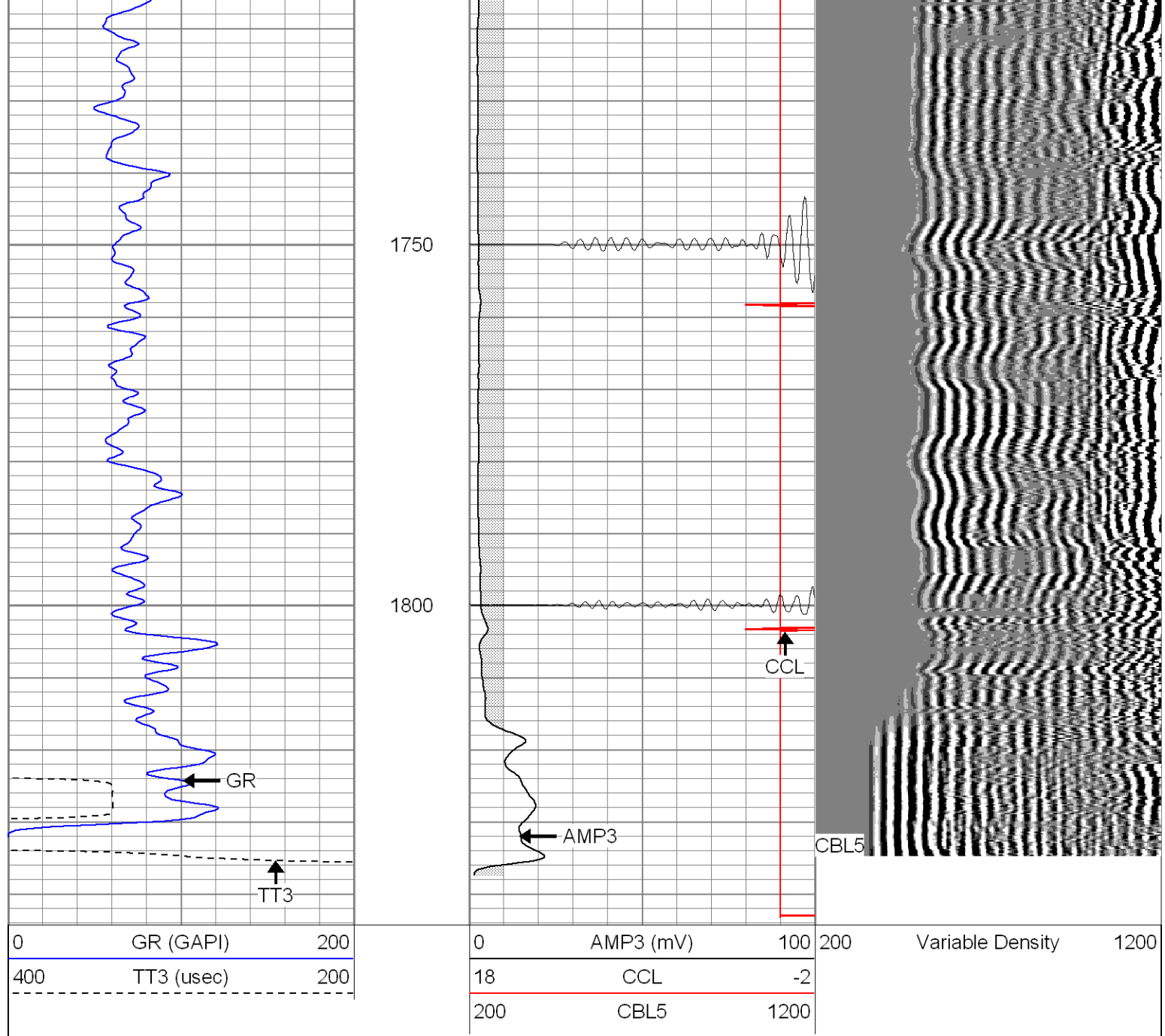
**SUPERIOR**

Black Lick, Pa.  
Mercer, Pa.  
Wooster, Oh.  
Cleveland, Ok.  
Trinidad, Co.

# Repeat Section

Database File: ac26-02b21207.db  
Dataset Pathname: pass1  
Presentation Format: cblrt  
Dataset Creation: Mon Feb 12 13:55:32 2007 by Log Warrior 7.0 STD Cas  
Charted by: Depth in Feet scaled 1:240





### Cement Bond Log Calibration Report

Serial Number:	Titan5		
Tool Model:	2		
Performed:	Mon Jan 29 08:49:30 2007		
Depth:	210.983	ft	
Casing Diameter:	5.5	in	
	3' Spacing	5' Spacing	
Signal Zero:	0	0	mV
Calibrated Amplitude:	85	85	mV
Reading at Signal Zero:	-0.02	0.00866699	V
Reading in Free Pipe:	1.11	1.2	V
Gain:	75.2212	71.3486	
Offset:	1.50442	-0.618378	

### Gamma Ray Calibration Report

Serial Number:	Titan5
----------------	--------

Serial Number:	Titan5
Tool Model:	T2
Performed:	Sat Feb 10 07:59:59 2007

Calibrator Value:	1.0	GAPI
-------------------	-----	------

Background Reading:	0.0	cps
Calibrator Reading:	1.0	cps

Sensitivity:	1.2000	GAPI/cps
--------------	--------	----------