

ACOUSTIC
CEMENT BOND
LOG

COMPANY <u>BASS ENTERPRISE</u>	
WELL <u>YELLOW CREEK</u> FEDERAL XOM #2-22-1	
FIELD <u>YELLOW CREEK</u>	
CNTY <u>RIO BLANC</u> STATE <u>CO</u>	
COMPANY <u>BASS ENTERPRISE</u>	
WELL <u>YELLOW CREEK</u> FEDERAL XOM #2-22-1	
FIELD <u>YELLOW CREEK</u>	
COUNTY <u>RIO BLANCO</u> STATE <u>COLORADO</u>	
LOCATION: 1607' FNL & 2097' FML	OTHER SERVICES: NONE
SEC. <u>02</u> TWP. <u>1S</u> RGE. <u>98W</u>	
PERM. DATUM <u>Ground Level</u> ELEV. <u>6308'</u>	
LOG MEASURED FROM <u>K.B. 16</u> FT. ABOVE PERMANENT DATUM	
DRILLING MEASURED FROM <u>KELLY BUSHING</u> ELEV.: <u>K.B. 6324'</u> D.F. <u>6323'</u> G.L. <u>6308'</u>	
DATE <u>09-APR-2007</u>	
RUN NO. <u>ONE</u>	
DEPTH DRILLER <u>3379'</u>	
DEPTH LOGGER <u>3342'</u>	
BTM. LOG INTERVAL <u>3336</u>	
TOP LOG INTERVAL <u>SURFACE</u>	
OPEN HOLE SIZE <u>14.750"</u>	
TYPE FLUID <u>MUD</u>	
DENS. <u>VISC. 9.0#</u> <u>N/A</u>	
MAX. REC. TEMP. °F <u>N/A</u>	
EST. CEMENT TOP <u>LOGGED</u>	
TIME WELL READY <u>ROA</u>	
TIME LOGGER ON BTM. <u>SEE LOG</u>	
EQUIP. NO. <u>14087</u>	
LOCATION <u>GRD. JUNCTION</u>	
RECORDED BY <u>MIKE NIX</u>	<u>BRUCE INMAN</u>
WITNESSED BY <u>DEAN HOLT</u>	
BOREHOLE RECORD	
RUN NO. <u>1</u>	BIT <u>N/A</u> FROM <u>SURF</u> TO <u>100'</u> SIZE <u>100'</u> WGT. <u></u> FROM <u></u> TO <u></u>
<u>2</u>	<u>14.75</u> <u>100'</u> <u>3379'</u> <u></u> <u></u> <u></u> <u></u>
CASING RECORD	
SURFACE STRING <u>20.000</u> <u>N/A</u> <u>N/A</u>	TYPE JOINT <u></u> TOP <u>100'?</u>
PROD. STRING <u>9.625"</u> <u>36#</u> <u>J-55</u>	SURF <u>3373'</u>
LINER <u></u>	

All interpretations of log data are opinions based on inferences from electrical or other measurements. We do not guarantee the accuracy or correctness of any interpretation or recommendation and we shall not be liable or responsible for any loss, cost, damages or expenses incurred or sustained by anyone resulting from any interpretation or recommendation made by any of our employees or agents.

REMARKS Rig: SST #8 Service Order # 132841
LOG RAN ON WIRELINE DEPTHS W/16' K.B. BHT N/A °F
LOGGED W/O PSI. @ SURFACE

Prints: 4

YOUR CREW TODAY IS: M. COBO, K. FAVORITE E. AGREDANO
THANK YOU FOR CHOOSING WEATHERFORD WIRELINE SRVC GRD. JUNCTION, CO. (970)263-8501

		EQUIPMENT DATA			
Bit Size	14.750"	Run No.	Tool Type	Tool No.	Other
Well Status	NEW DRILL	ONE	CENA	220	
Surface Pressure		ONE	CTBA	228	
Shut In	Flowing	ONE	GRBA	229	
PSI.		ONE	CENB	233	
		ONE	SBTA	248	
		ONE	CENA	218	

DEPTH SCALE: 5":100'

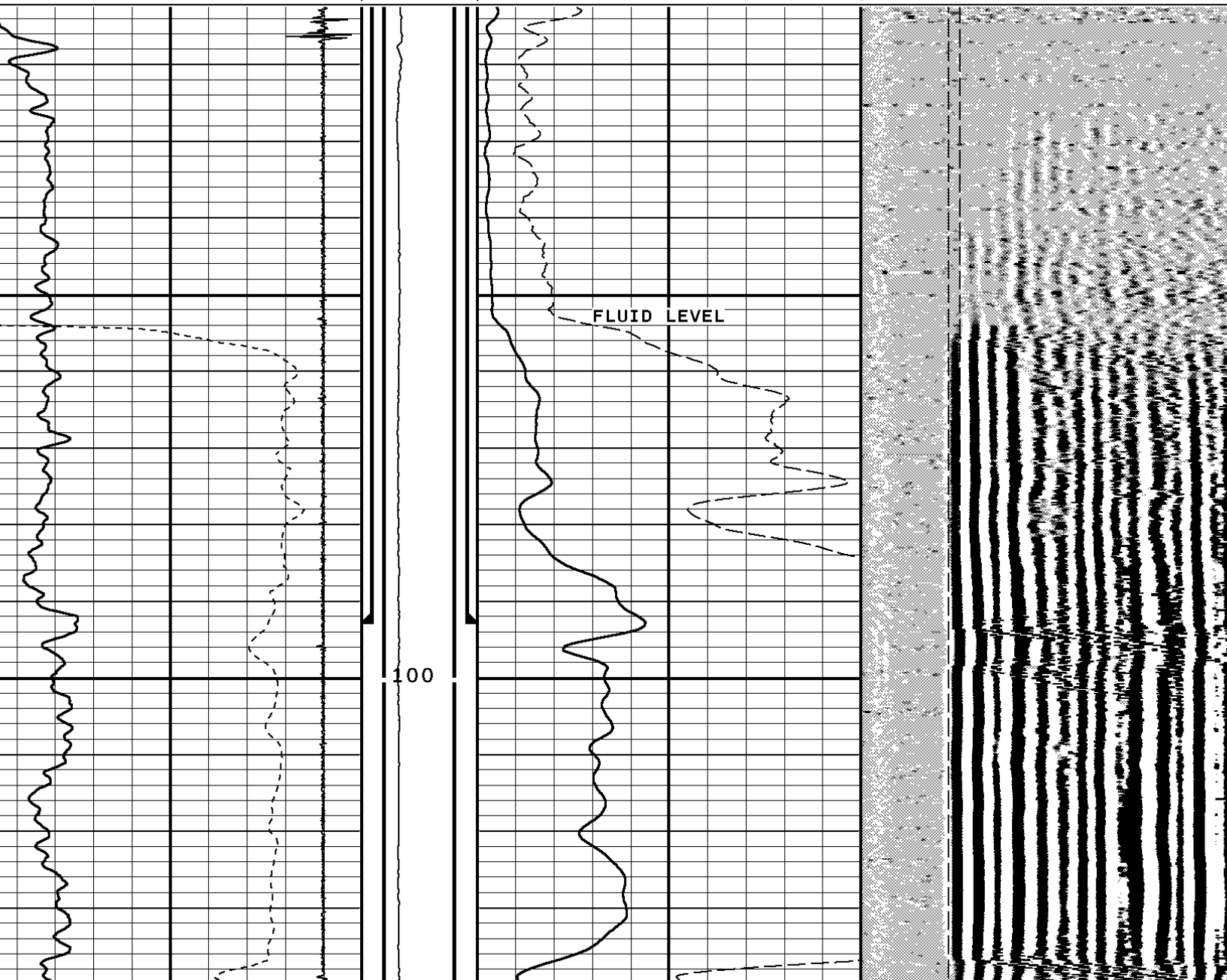
VERSION: 2006.07.04.29 RLS

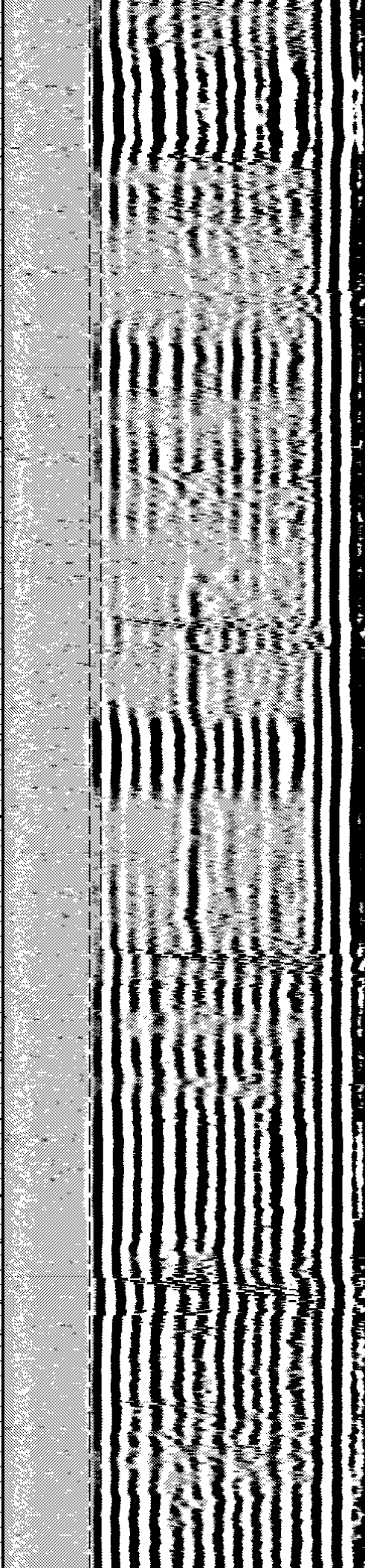
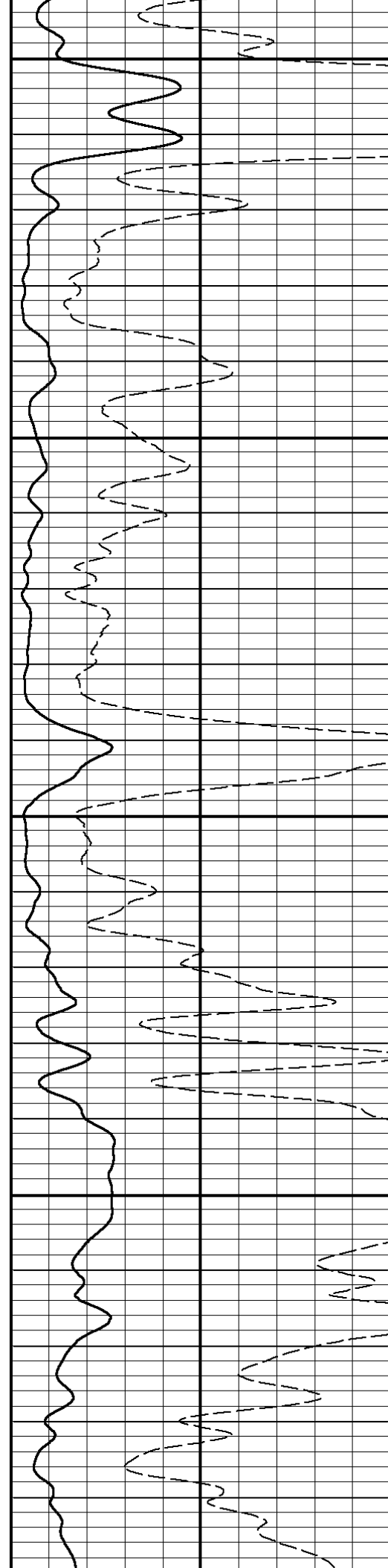
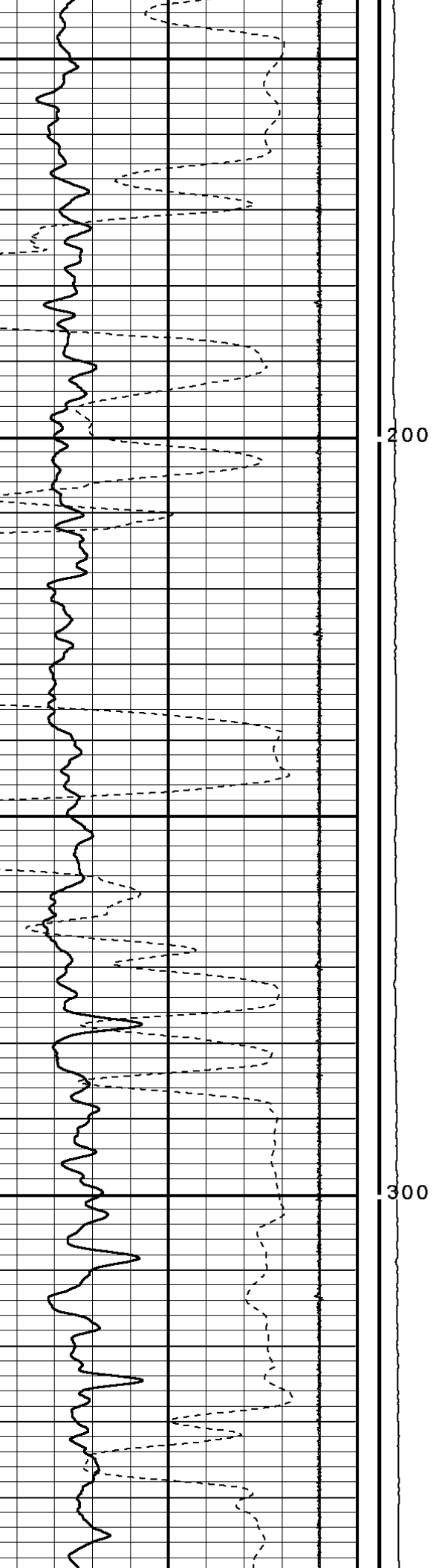
MAIN PASS W/O PSI.

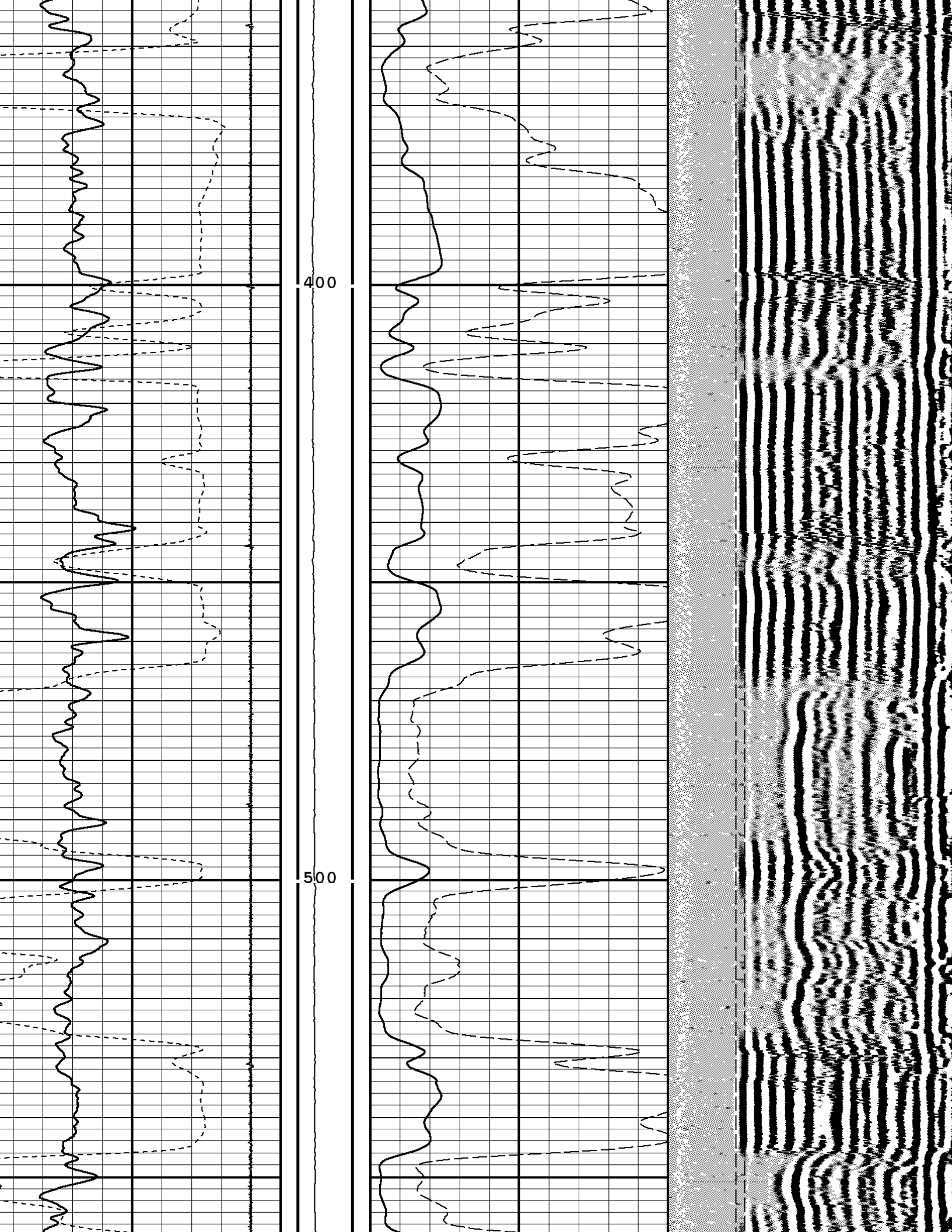
132841 cbl4

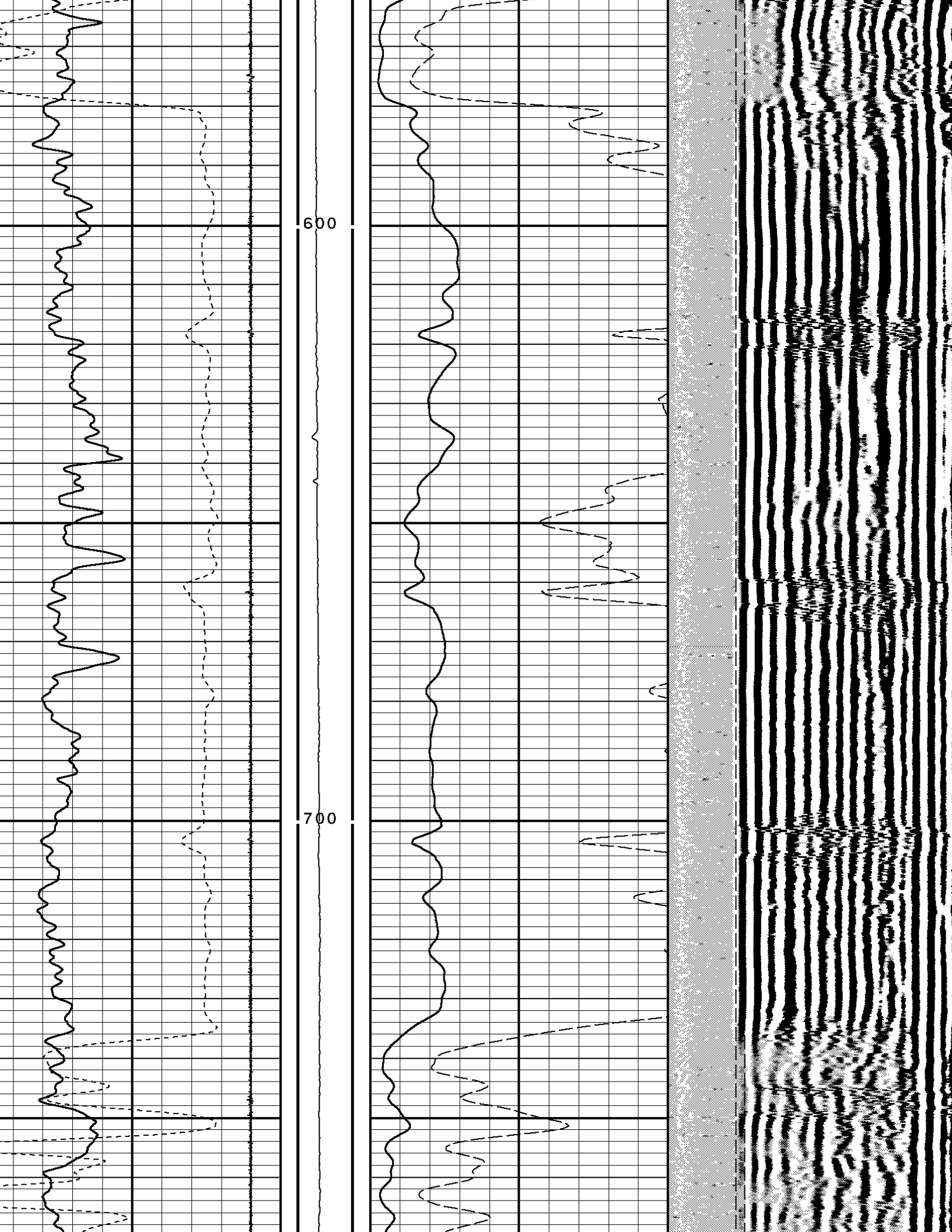
FINISH DEPTH: 11.9 Feet DIRECTION: UP DATE: 04/10/2007 TIME: 01:42 MODE: ORIGINAL

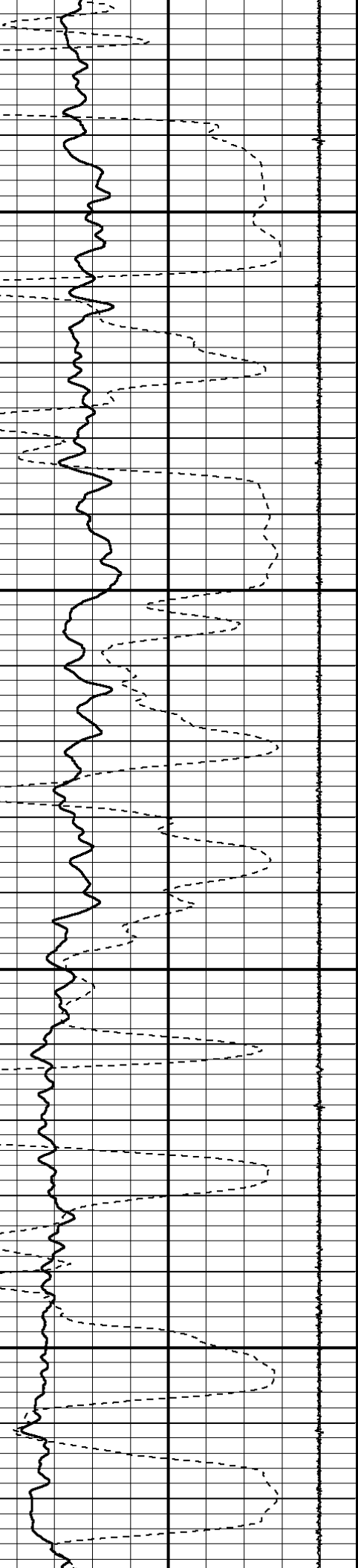
Collar Locator			FREE PIPE GATE		
1350	Millivolts	150	200	Microseconds	120
Gamma Ray			FREE PIPE GATE		
	API	150	200	Microseconds	120
TRAVEL TIME 3FT			VARIABLE DENSITY 5FT		
00	Microseconds	300	0	Microseconds	120
TENSION			AMPLITUDE 3FT		
0 LBS	700	0	0	Millivolts	100





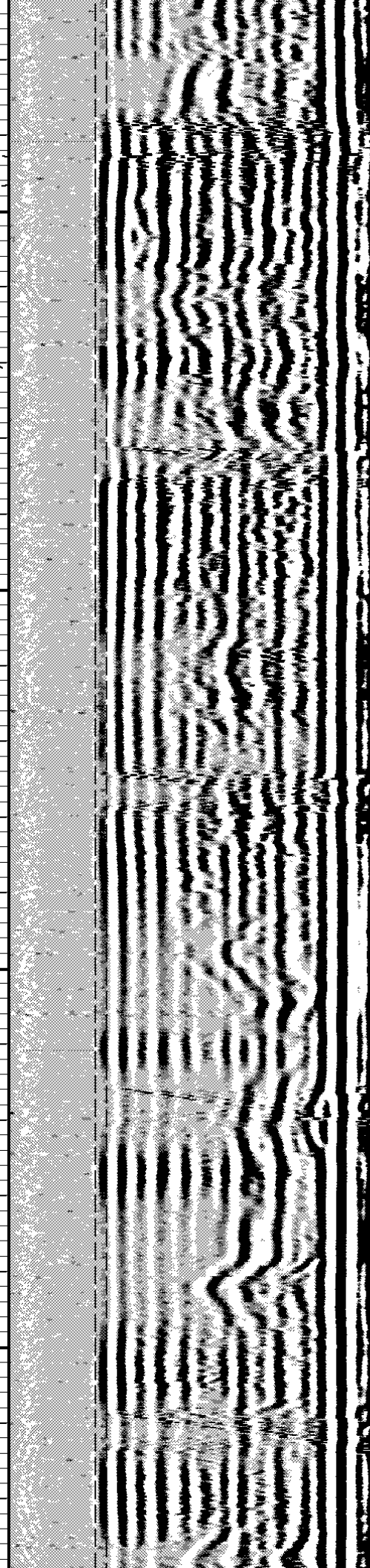
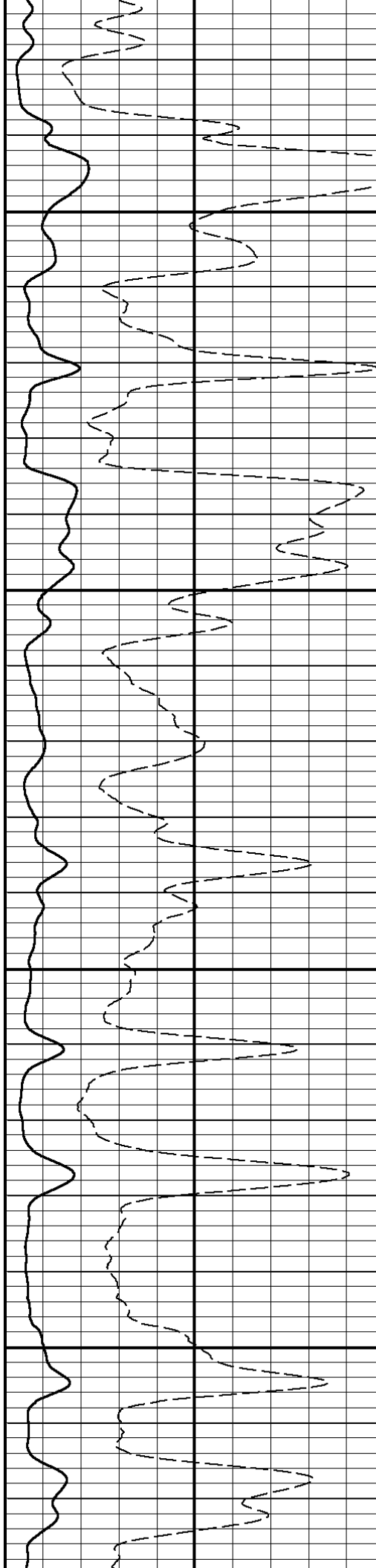


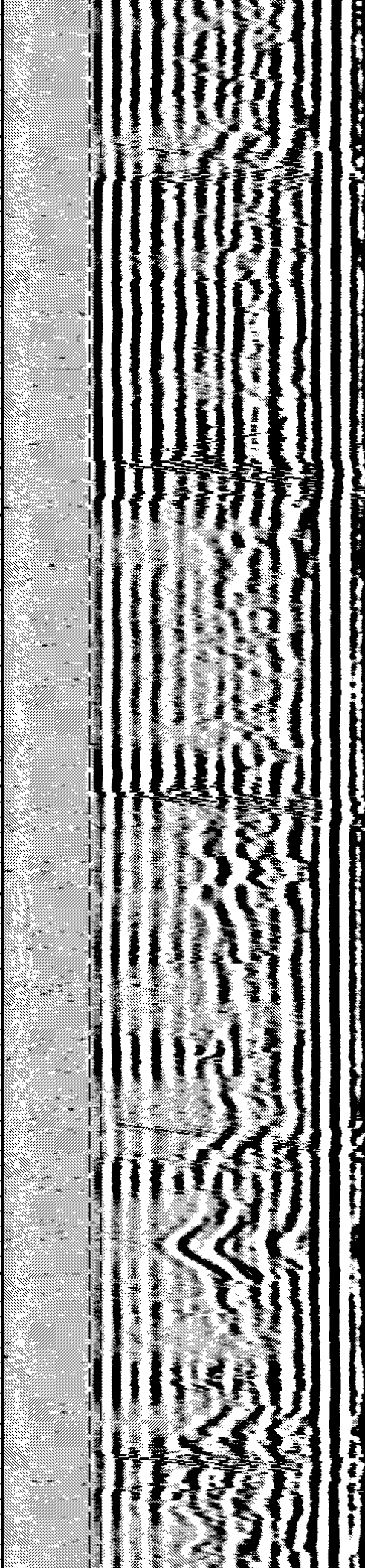
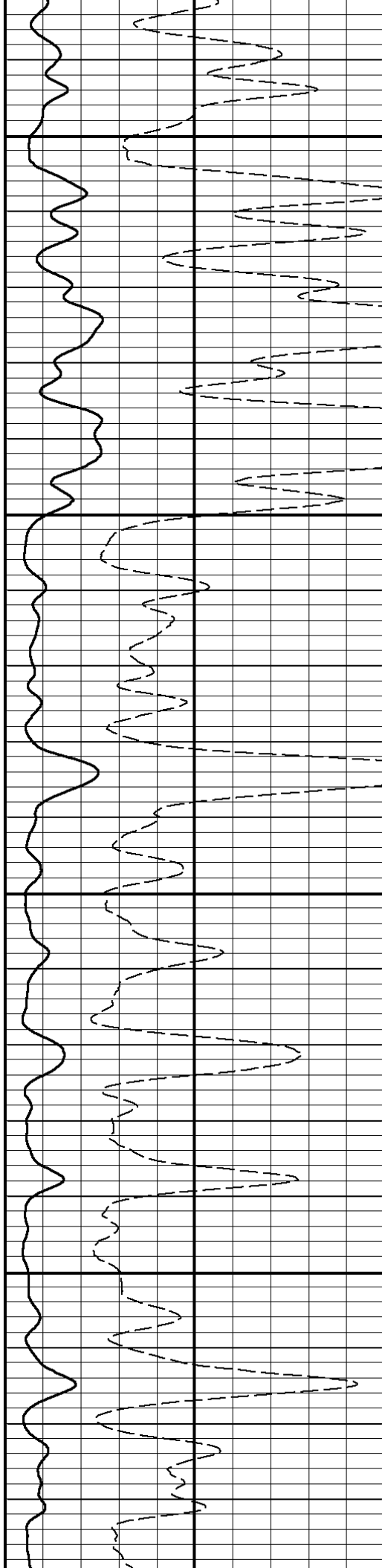
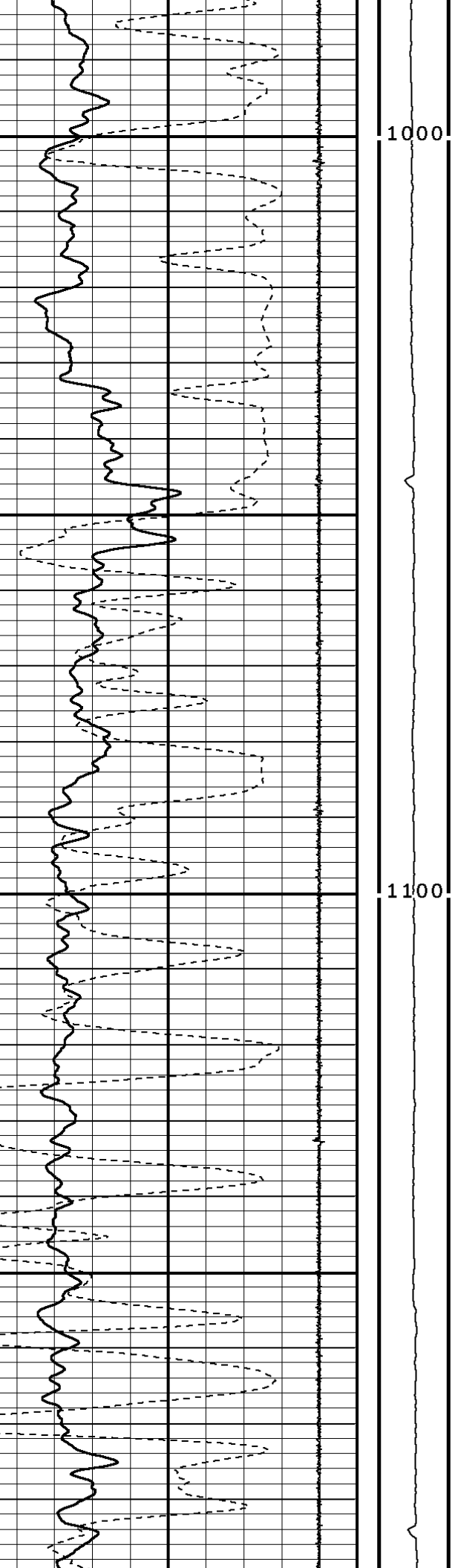


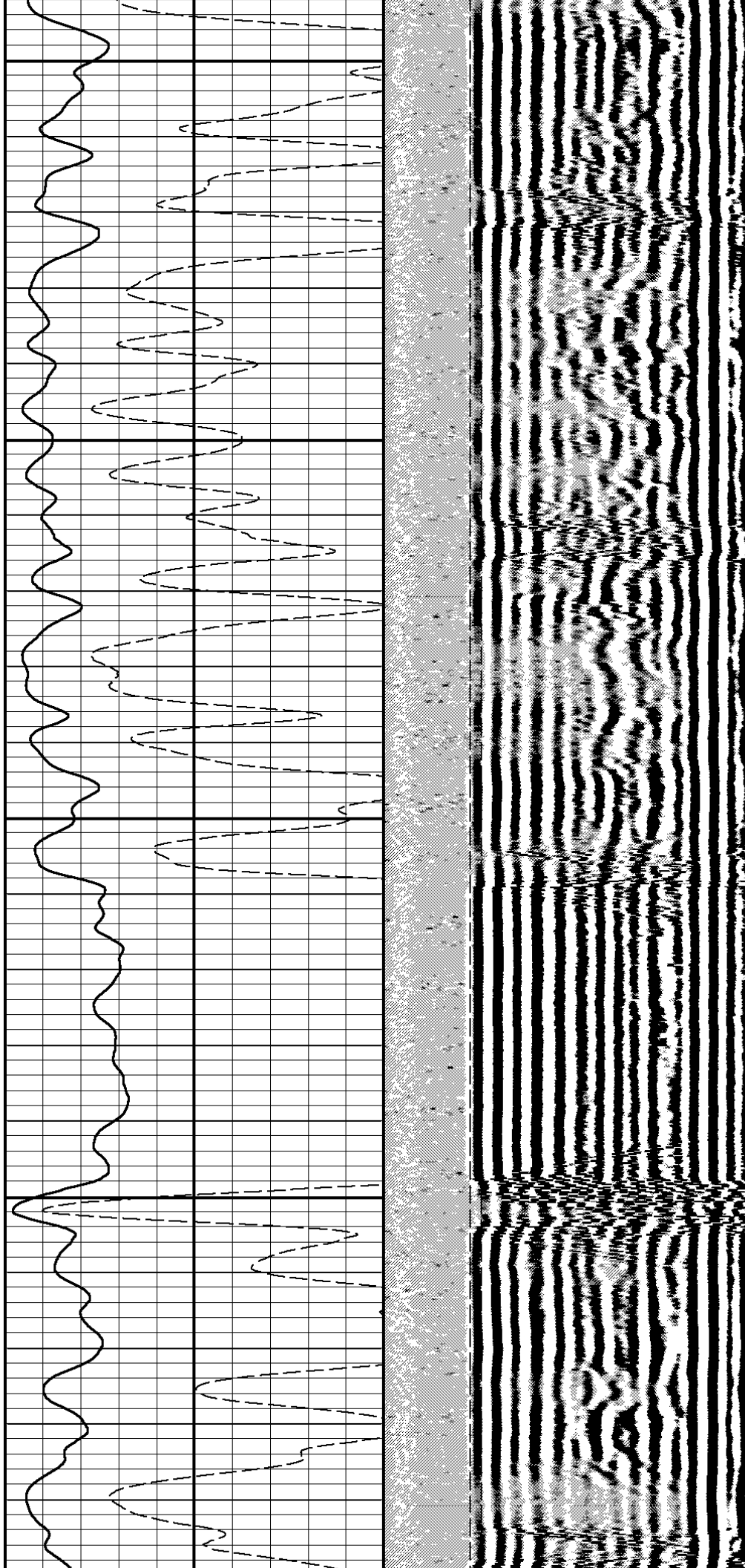
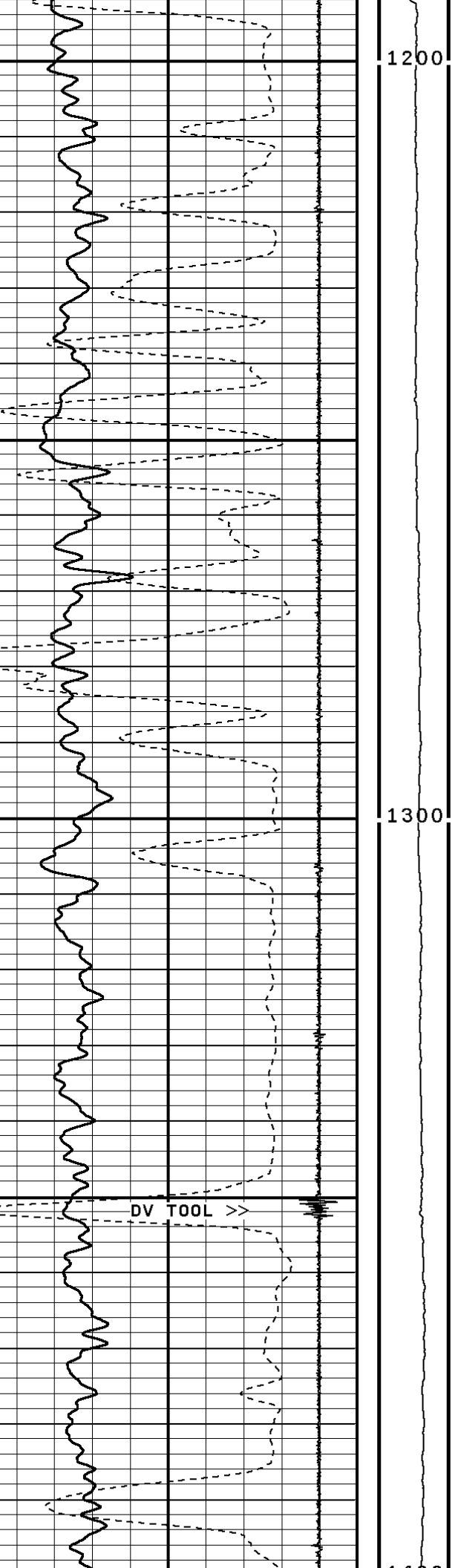


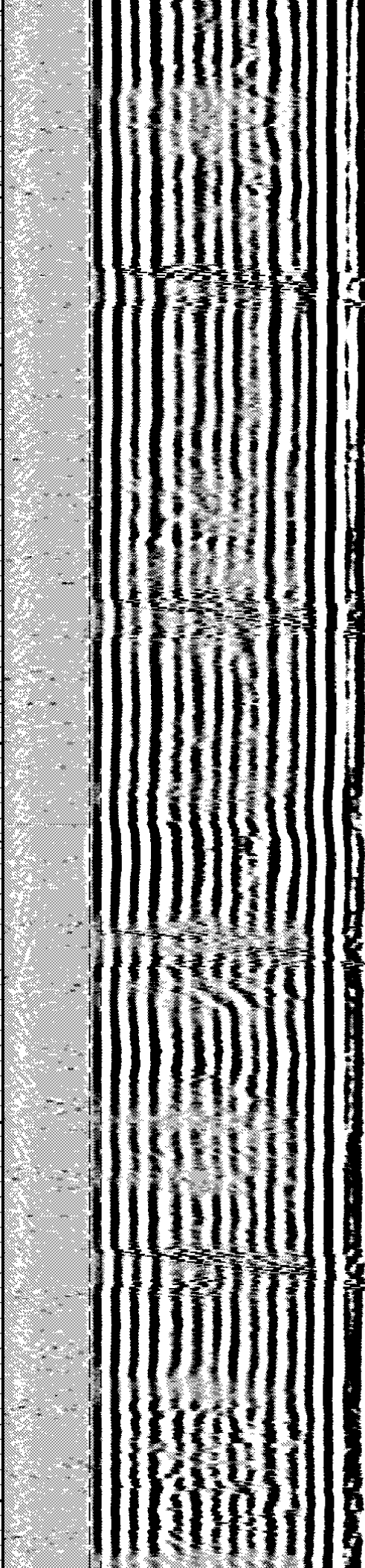
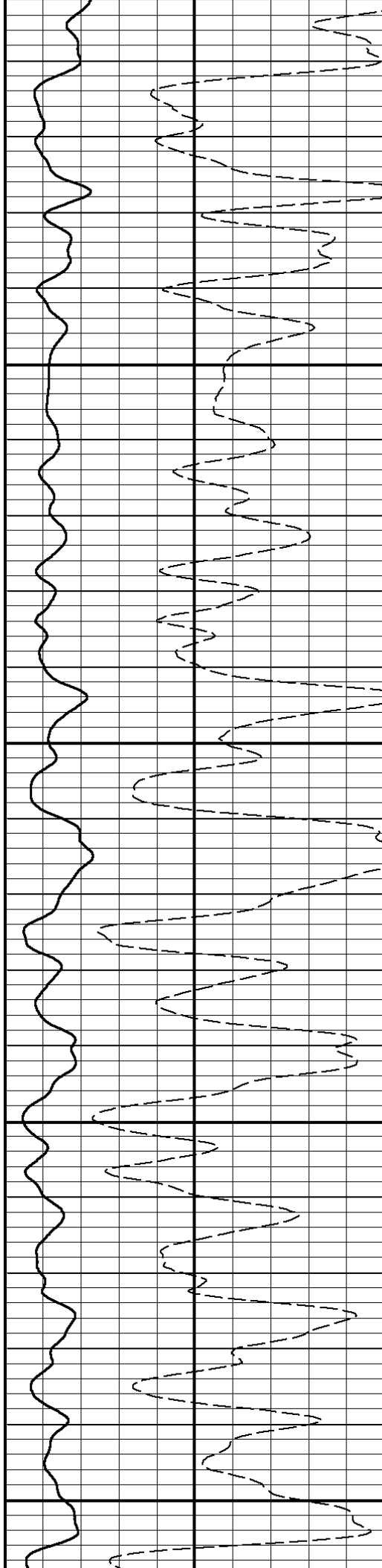
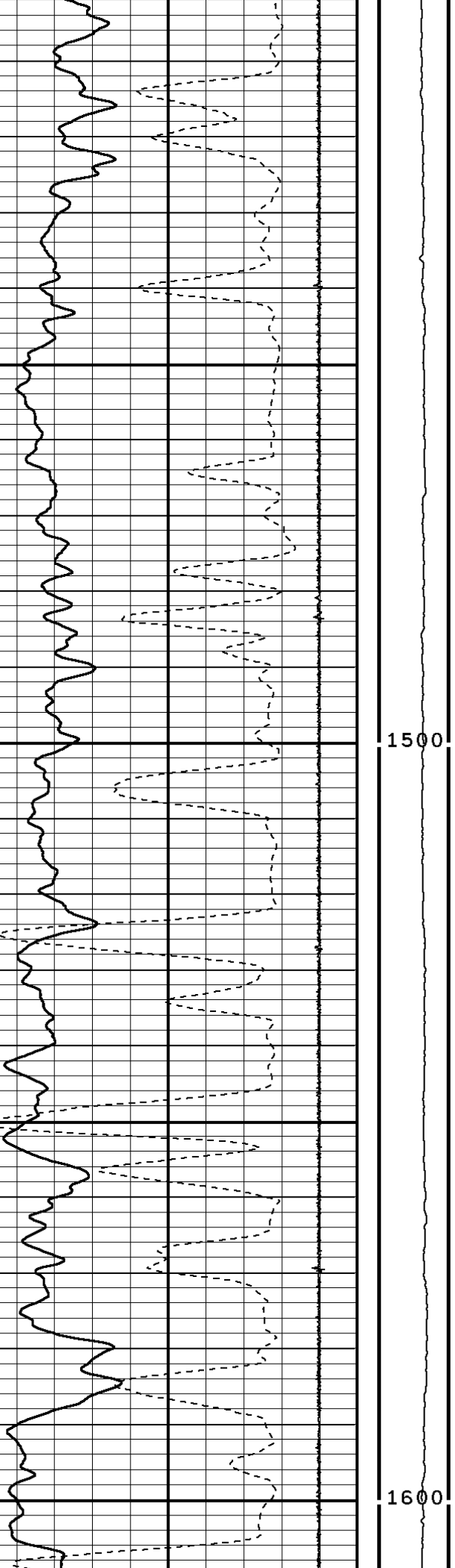
800

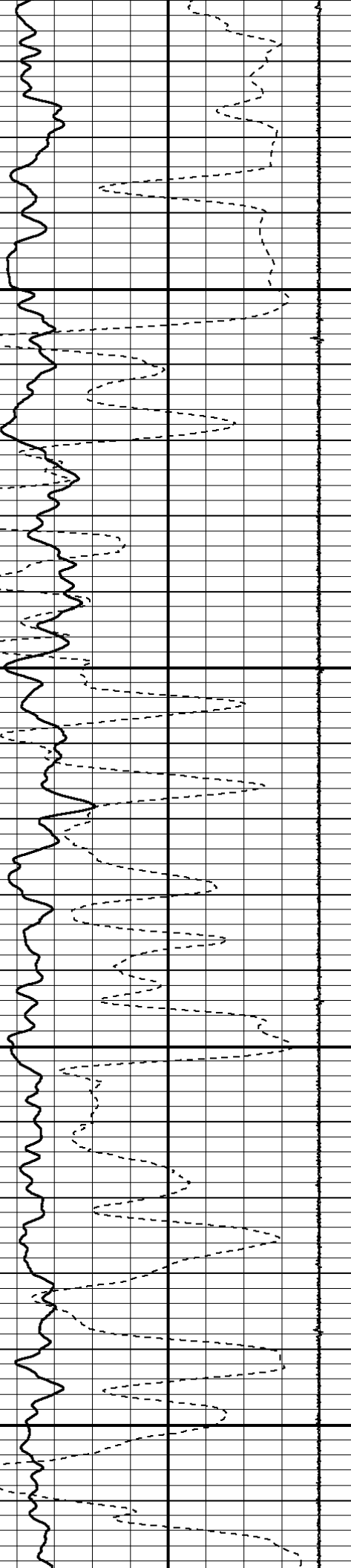
900



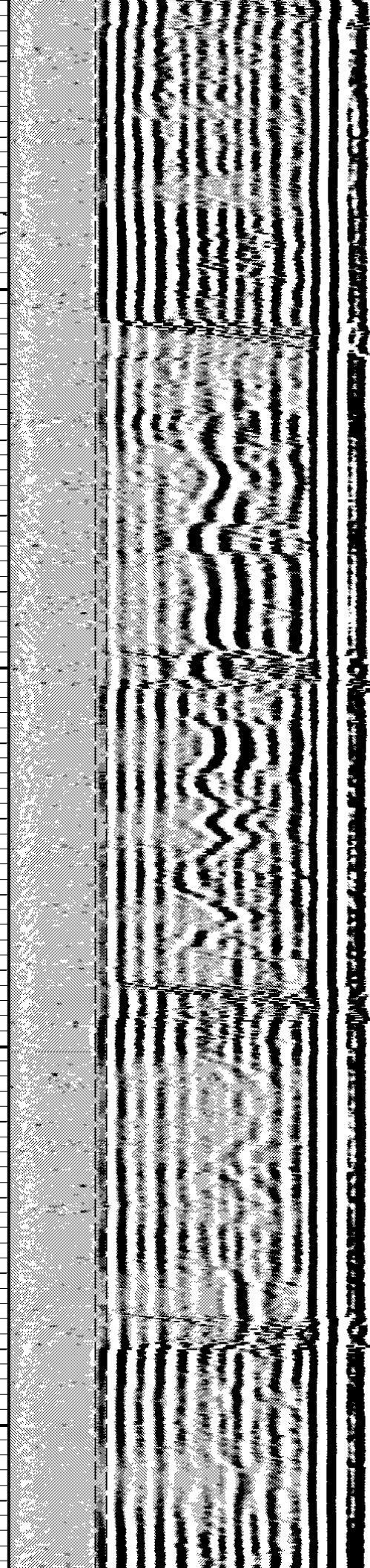
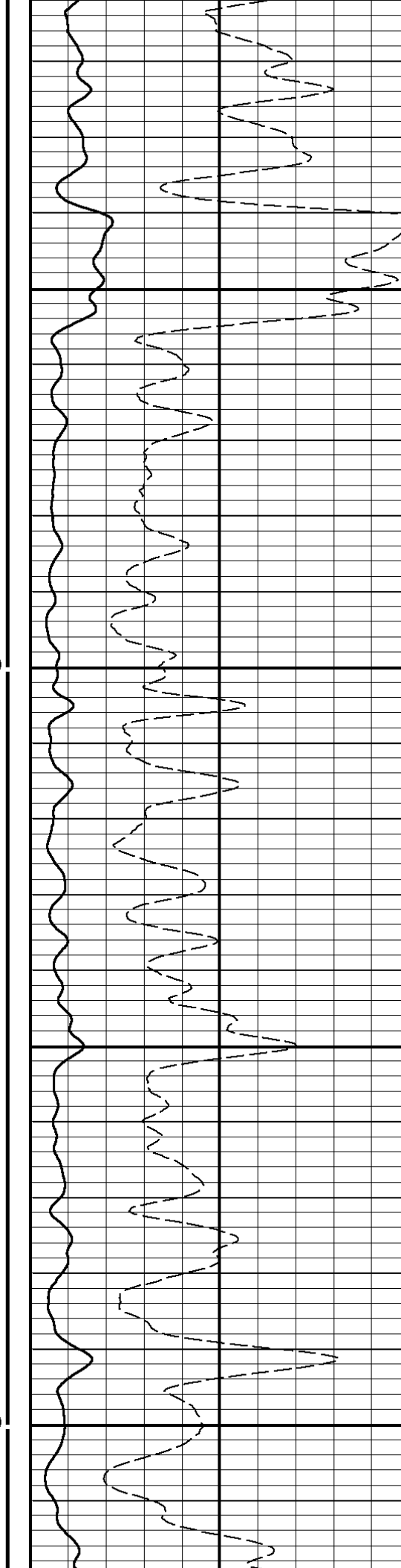


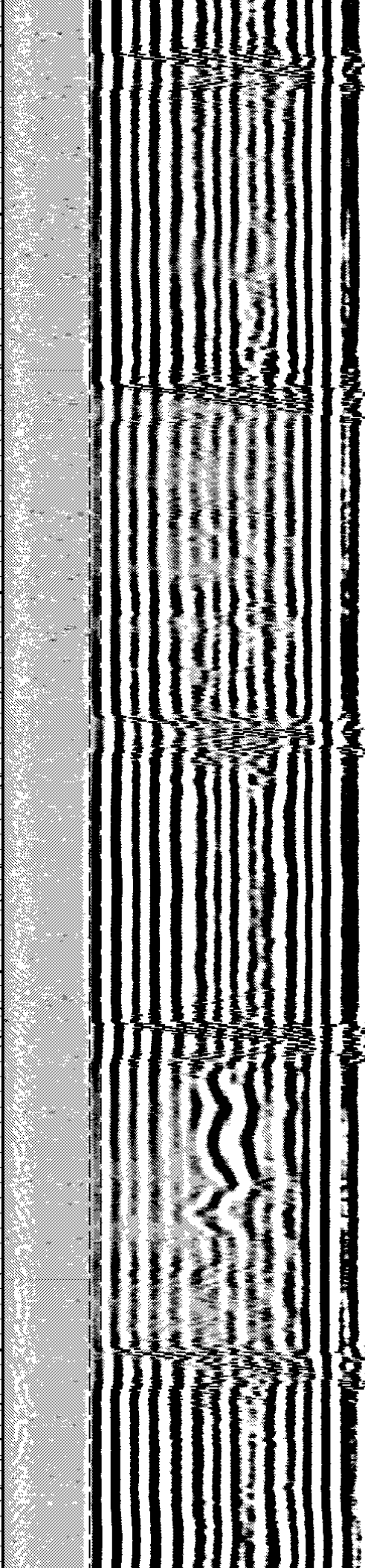
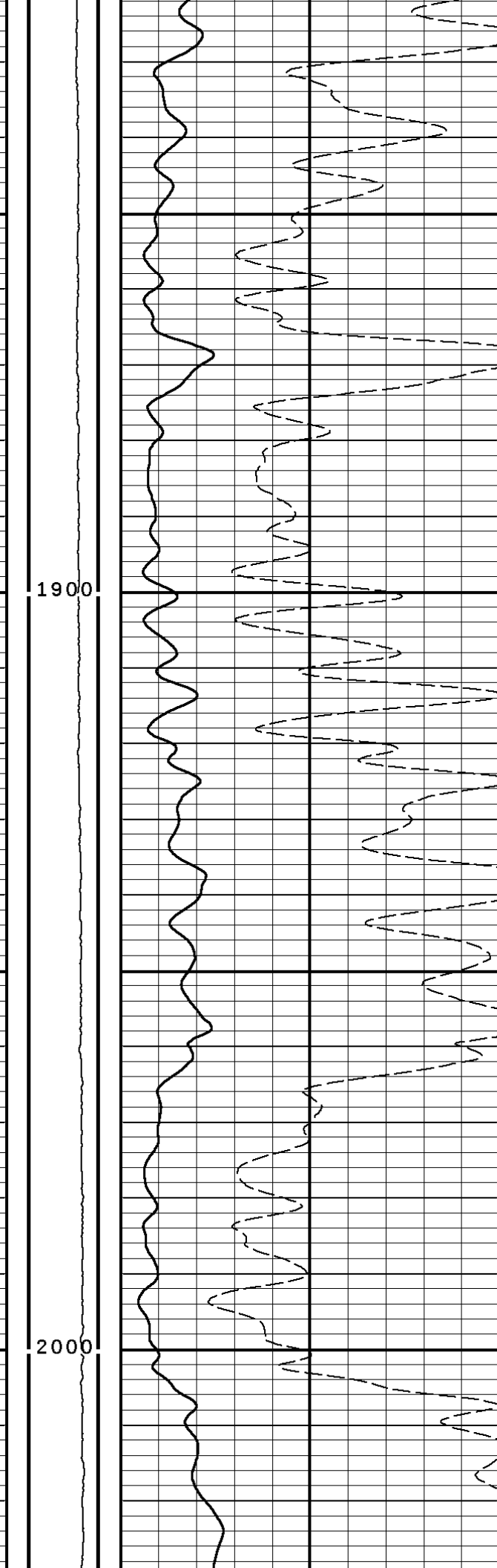
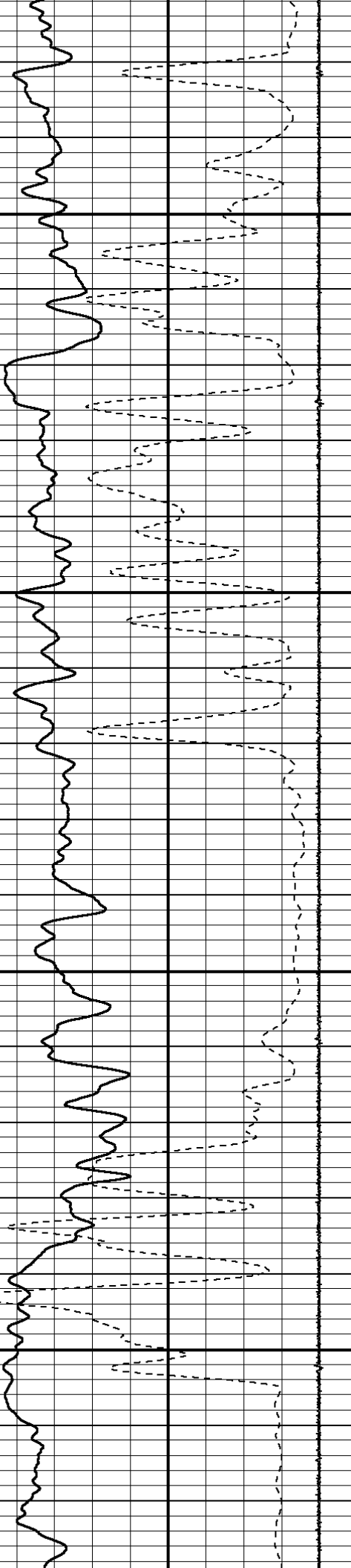


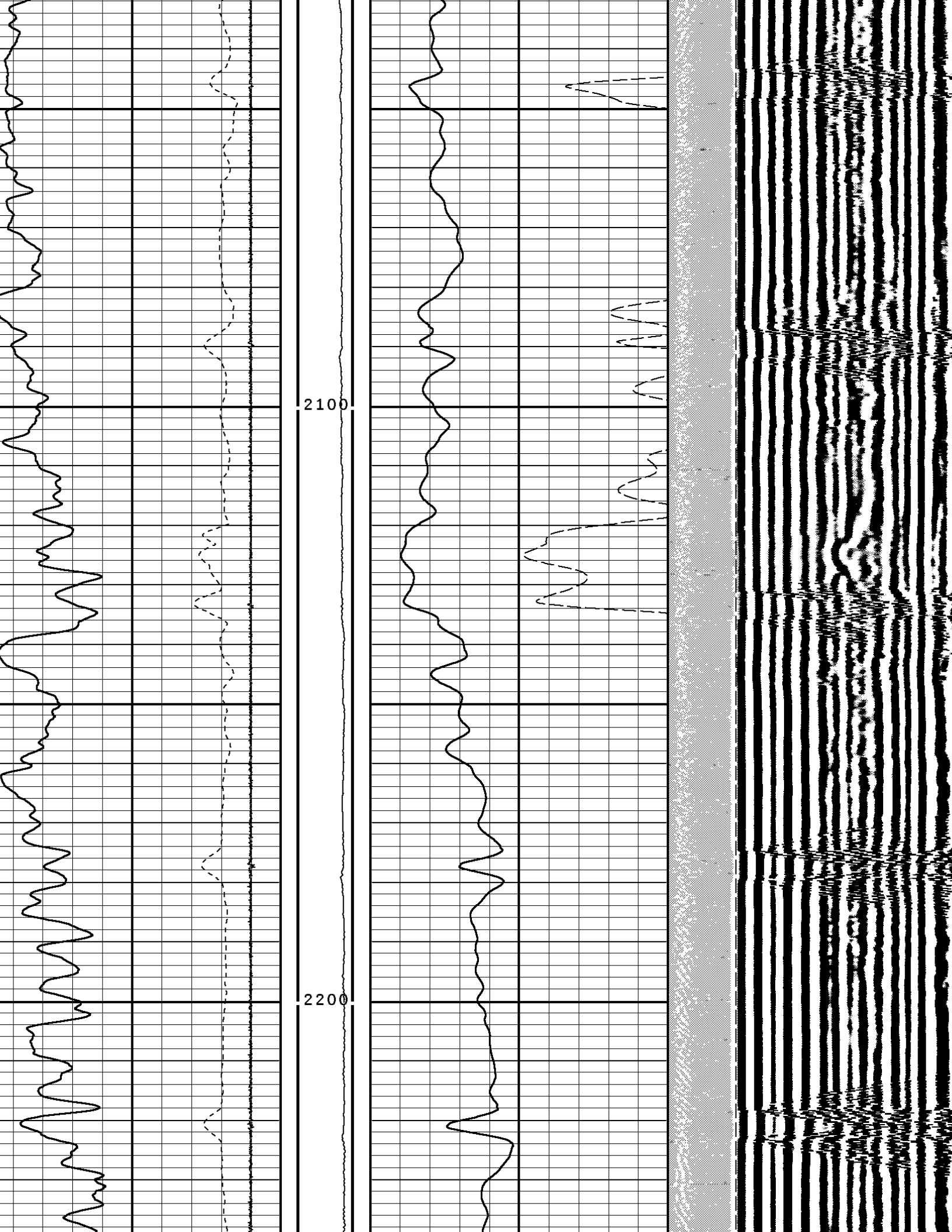


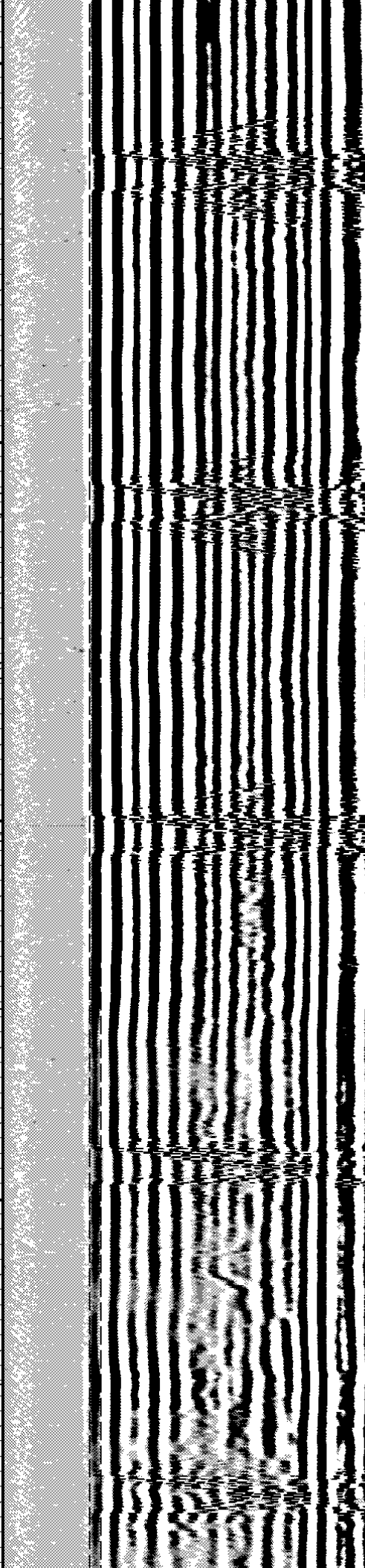
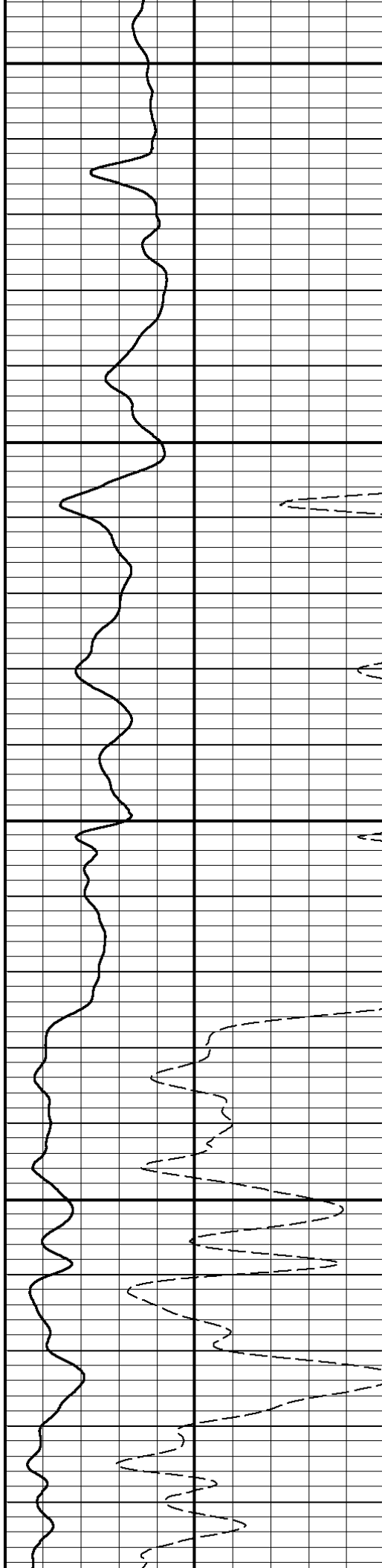
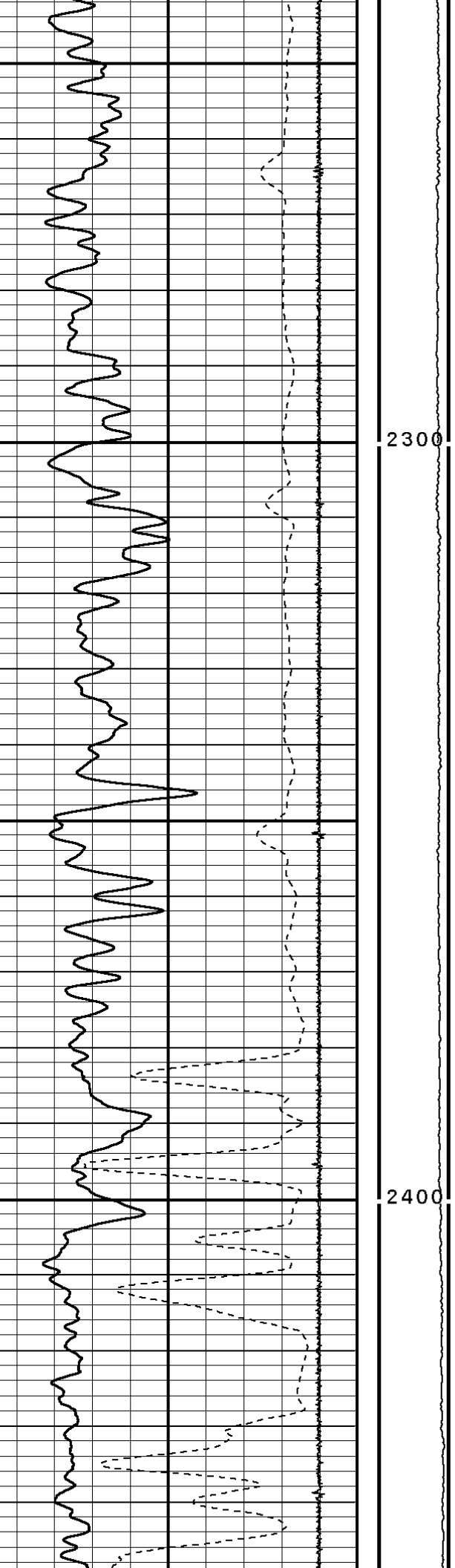


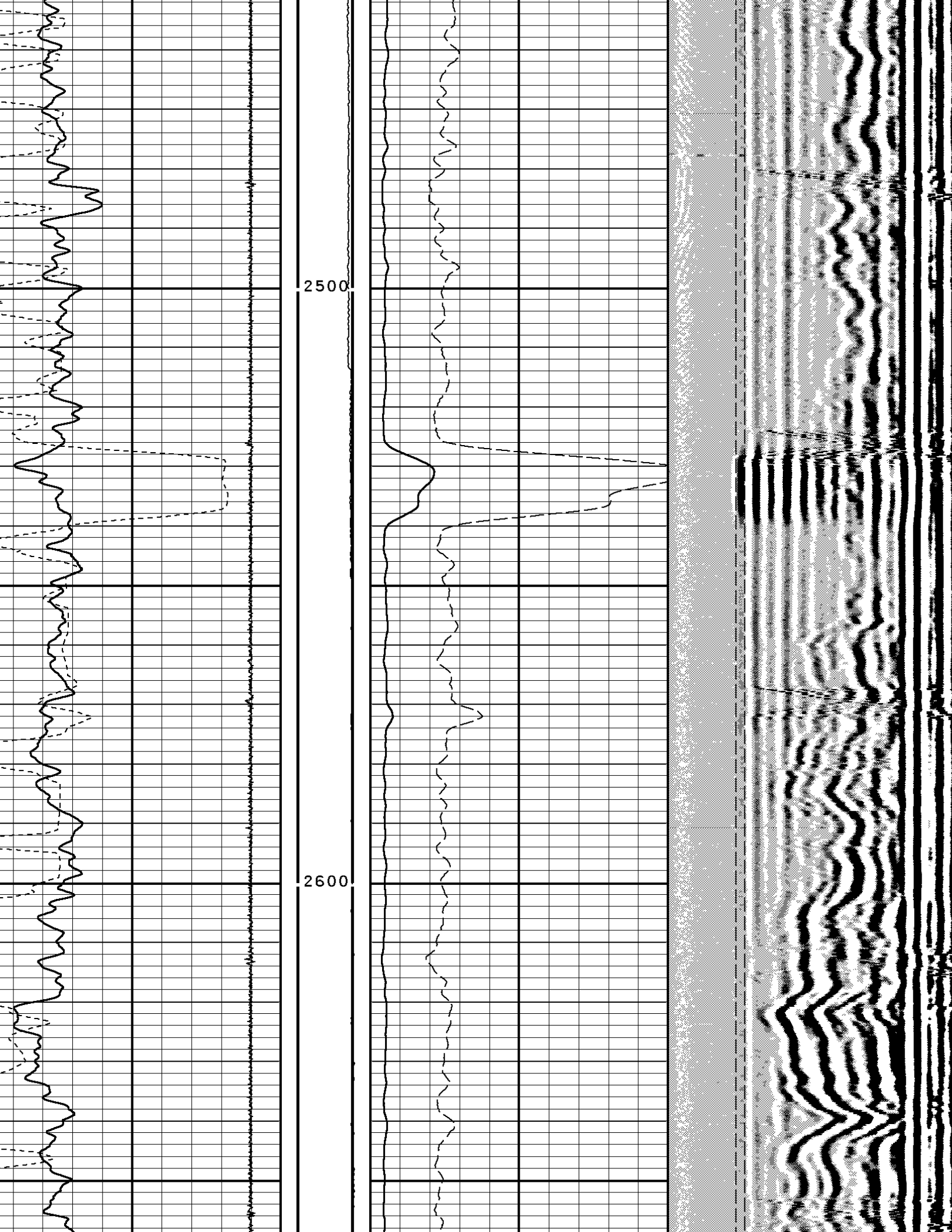
1700
1800

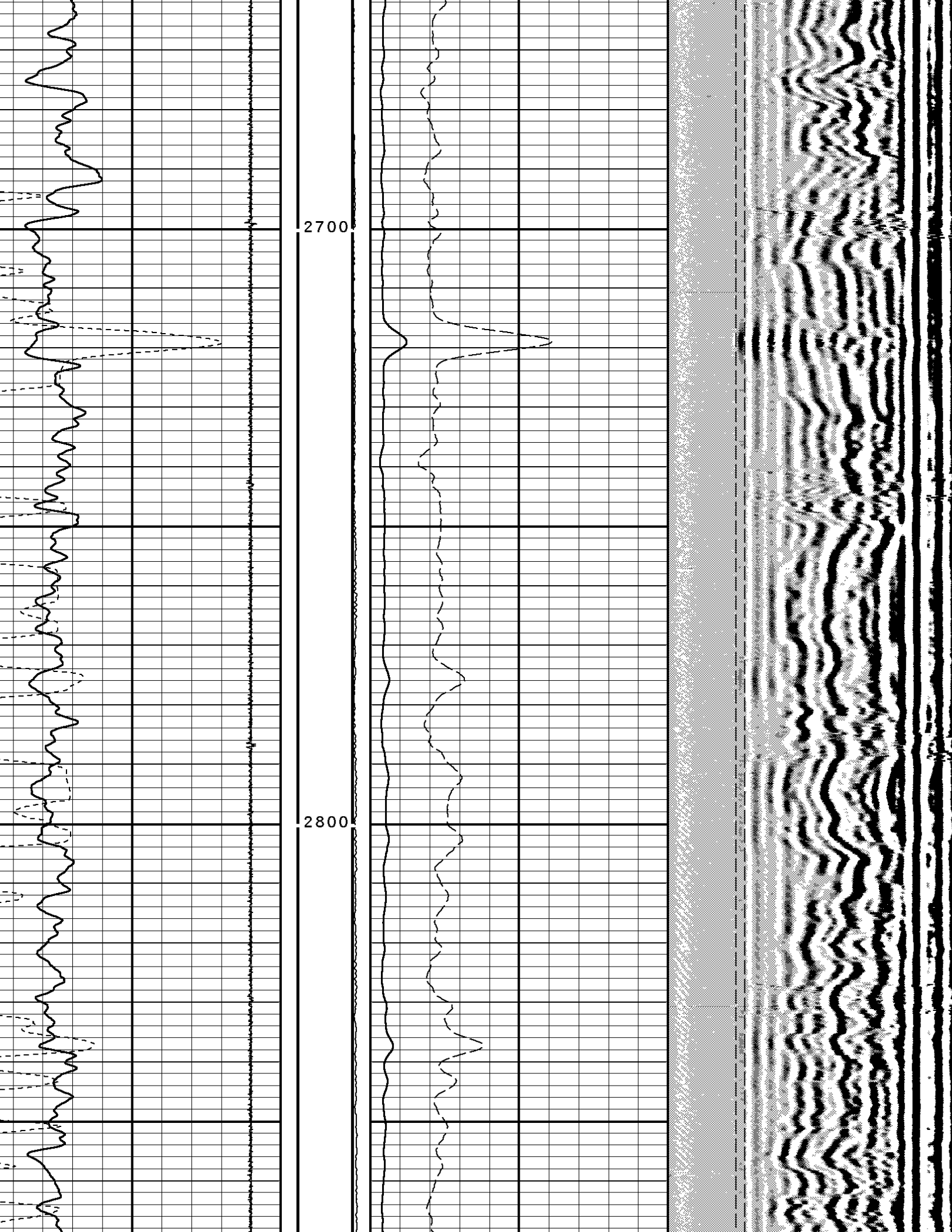


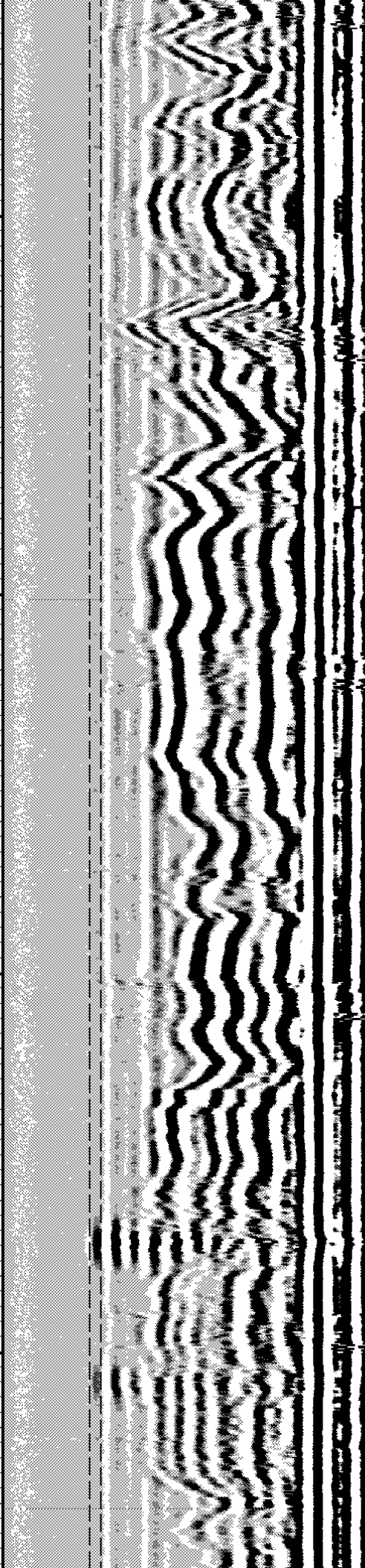
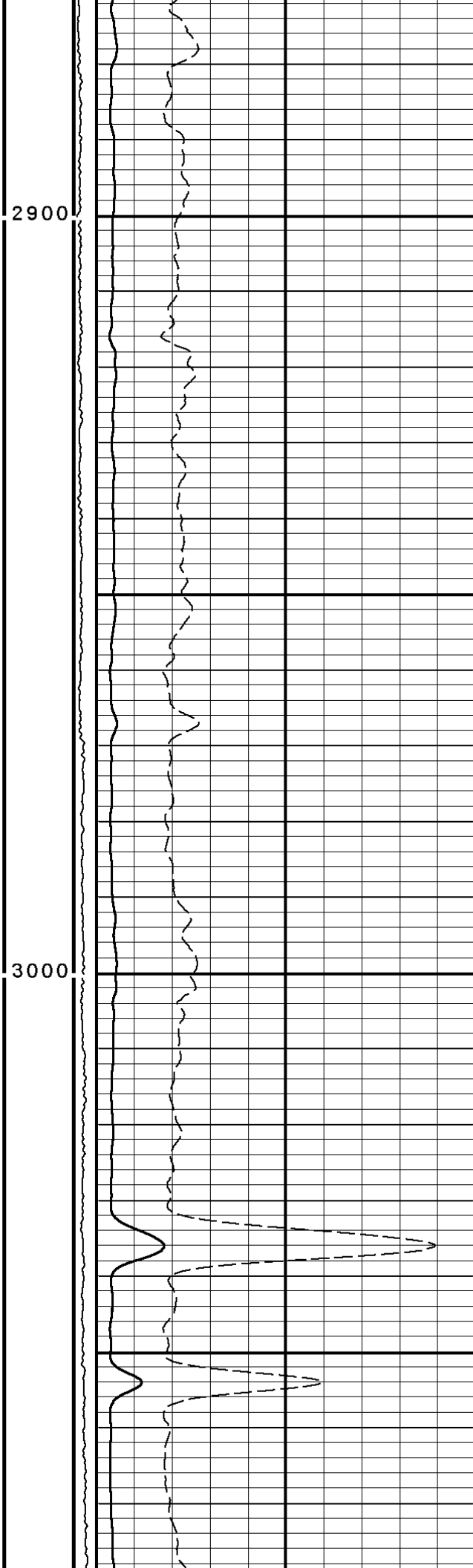
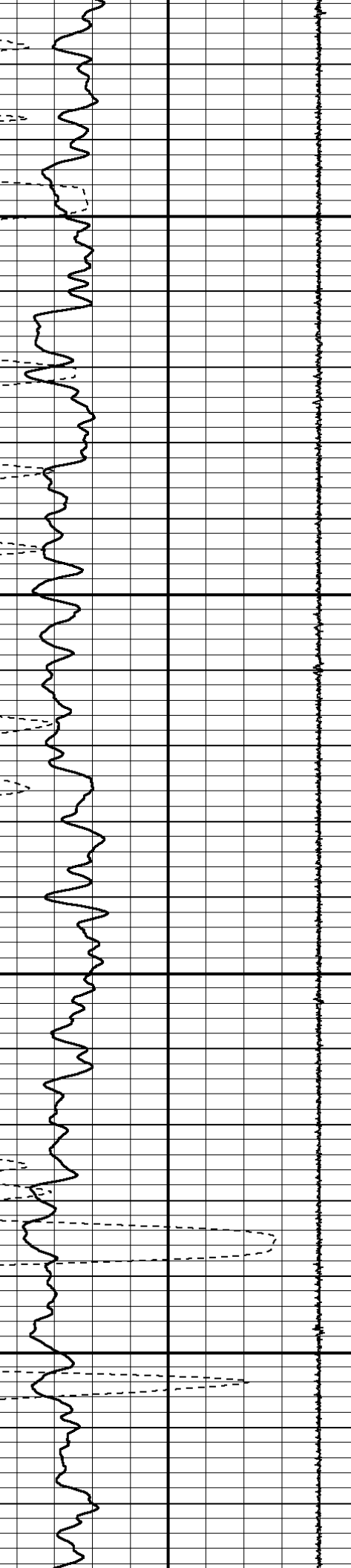


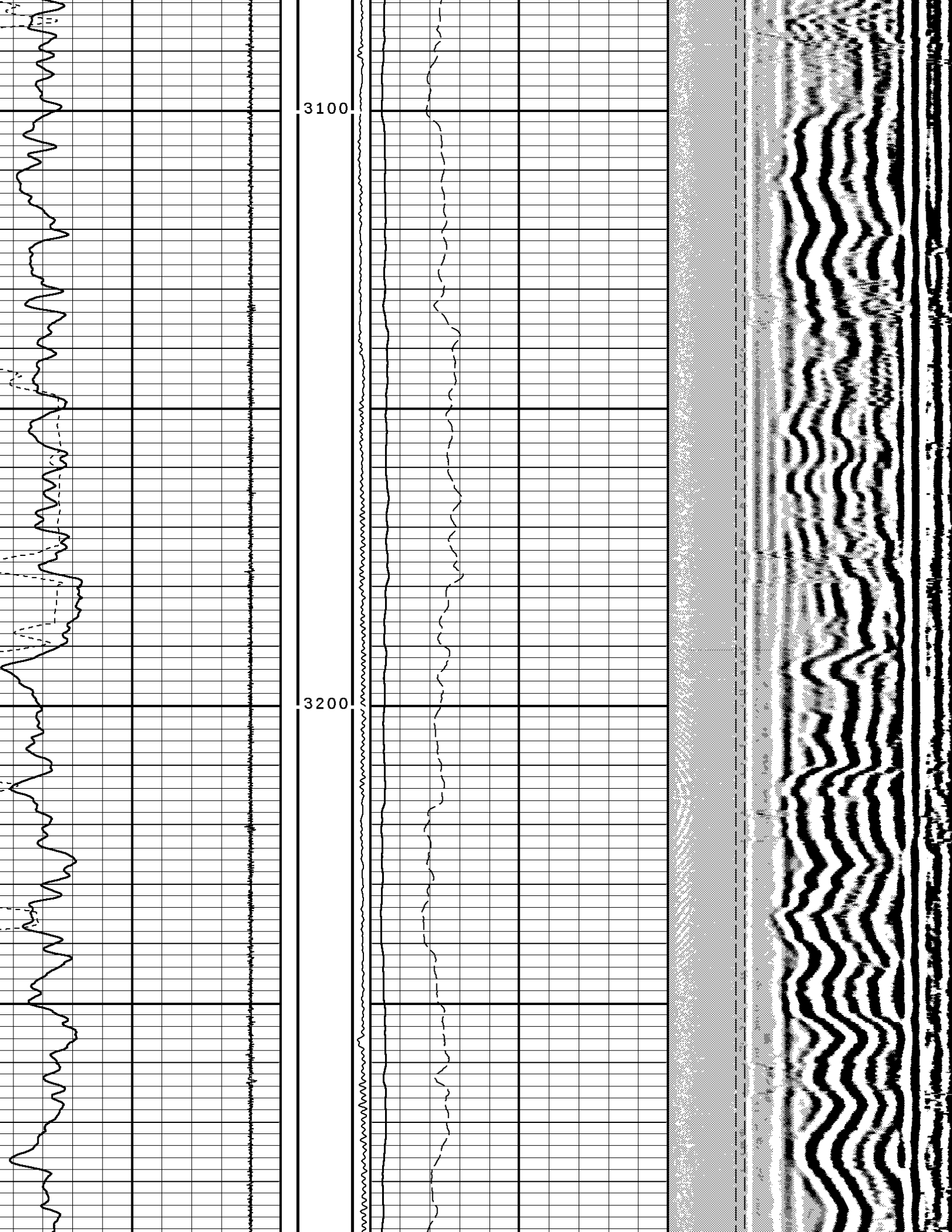


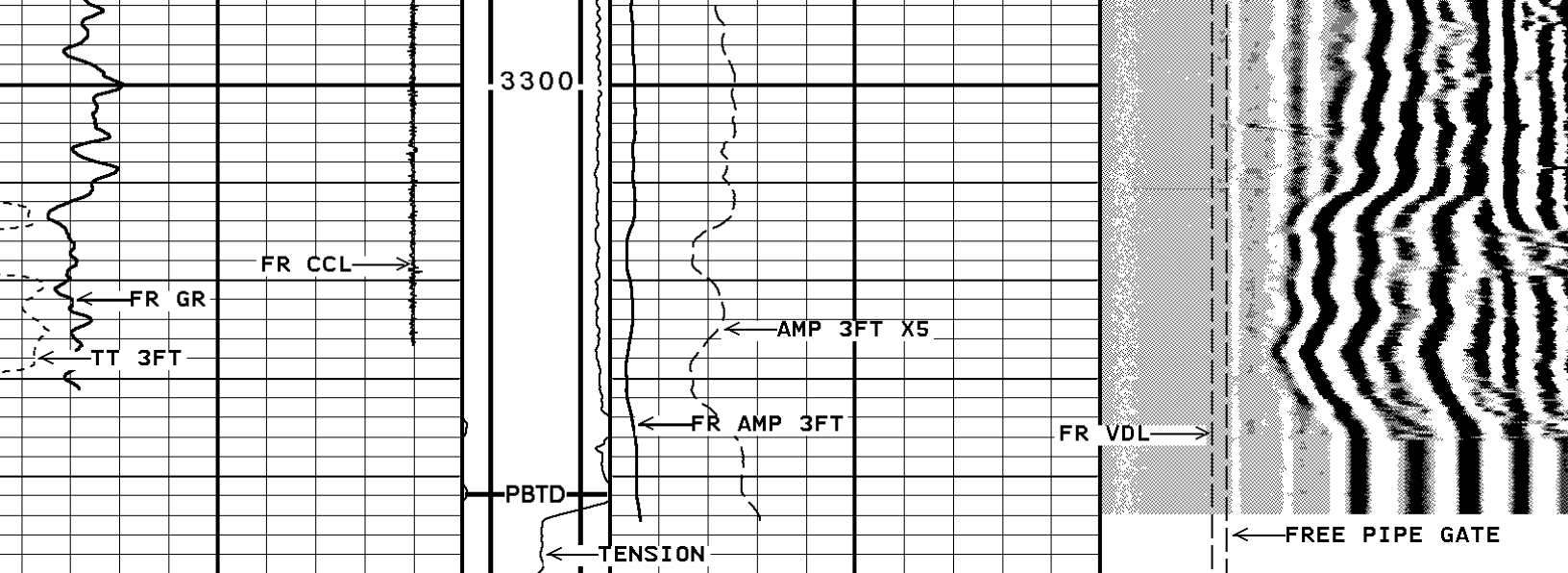












TRAVEL TIME 3FT	TENSION	AMPLITUDE 3FT	VARIABLE DENSITY 5FT
00 Microseconds 300	0 LBS 700	0 Millivolts 100	200 Microseconds 1200
Gamma Ray		AMPLITUDE 3FT X5	FREE PIPE GATE
API 150		0 Millivolts 20	200 Microseconds 1200
Collar Locator			FREE PIPE GATE
1350 Millivolts 150			200 Microseconds 1200

START DEPTH: 3350.1 DIRECTION: UP DATE: 04/10/2007 TIME: 01:40 MODE: ORIGINAL
132841 cbl4

MAIN PASS W/O PSI.

DEPTH SCALE: 5":100'

VERSION: 2006.07.04.29 RLS

SYSTEM CONSTANTS

NAME	DESCRIPTION	VALUE	UNITS
CSIZ	Casing Size	9.625	Inches
CWEI	Casing Weight	36.00	Pounds/Foot
CCL0	Ccl Offset	0	
SWAN	Sheave Wheel Angle	0.00	Degrees
AMNS	Min Ampl 100% Bond	2	Millivolts
AMXS	Max Ampl 0% Bond	48	Millivolts
TTC	TT Correction	0	Microseconds
DTF	DT Fluid	188.0	Microsec/Foot
TTFF	Fast Formation TT	38.7	Microsec/Foot
CCS	Cement Cmpr Strength	3325.0	PSI
CVEL	Casing Velocity	56.5	Microsec/Foot
MATT	Maximum Attenuation	12.00	Decibels/Foot

DEPTH SCALE: 5":100'

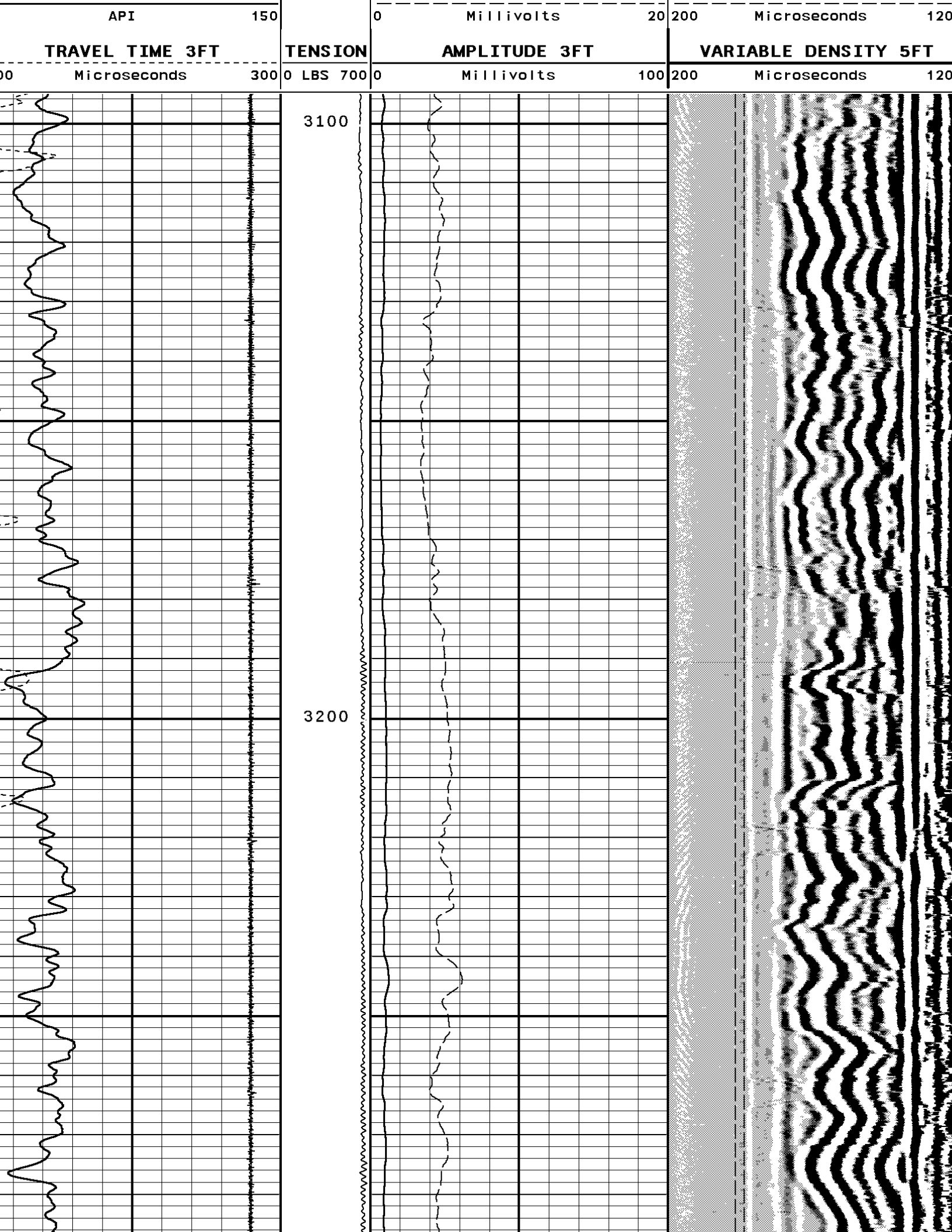
VERSION: 2006.07.04.29 RLS

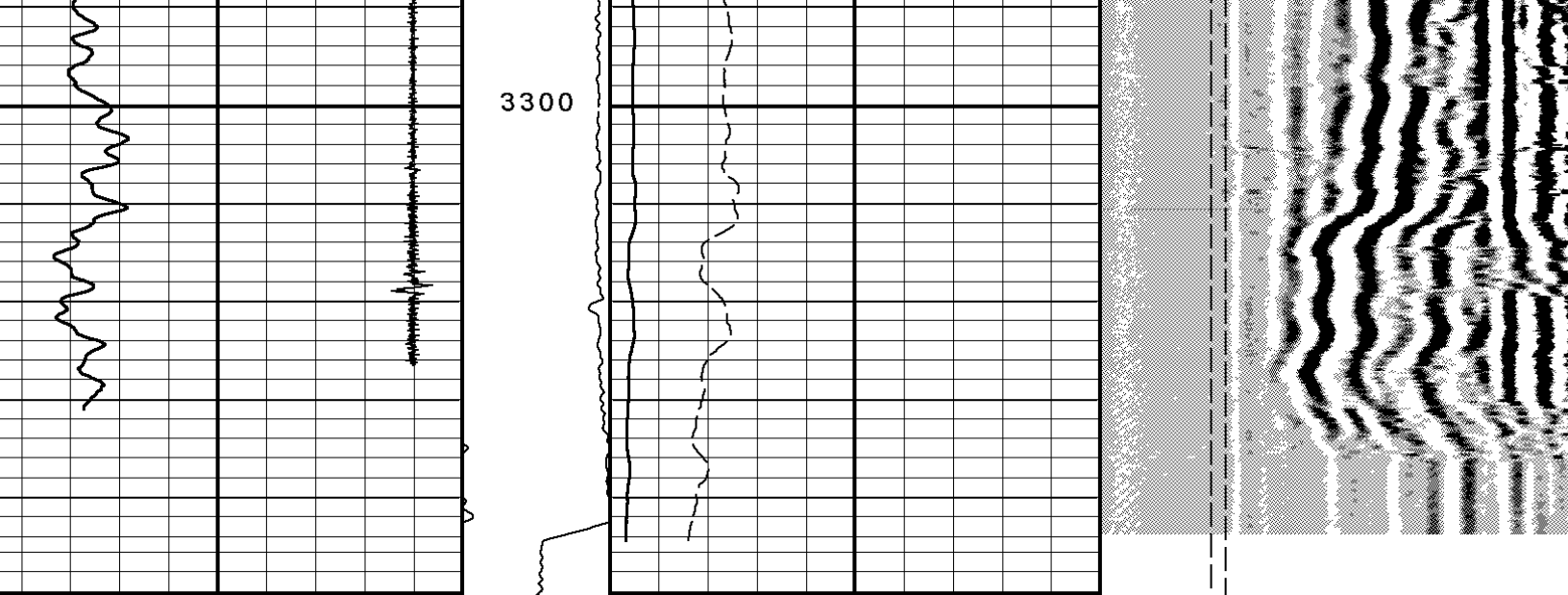
REPEAT PASS W/O PSI.

132841 cbl3

FINISH DEPTH: 3094.5 Feet DIRECTION: UP DATE: 04/10/2007 TIME: 01:53 MODE: ORIGINAL

Collar Locator	FREE PIPE GATE
1350 Millivolts 150	200 Microseconds 1200





TRAVEL TIME 3FT	TENSION	AMPLITUDE 3FT	VARIABLE DENSITY 5FT
000 Microseconds 300	0 LBS 700	0 Millivolts 100	200 Microseconds 120
Gamma Ray		AMPLITUDE 3FT X5	FREE PIPE GATE
API 150		0 Millivolts 20	200 Microseconds 120
Collar Locator			FREE PIPE GATE
350 Millivolts 150			200 Microseconds 120

START DEPTH: 3350.1 DIRECTION: UP DATE: 04/10/2007 TIME: 01:53 MODE: ORIGINAL
 132841 cb13

REPEAT PASS W/O PSI.

DEPTH SCALE: 5":100' VERSION: 2006.07.04.29 RLS

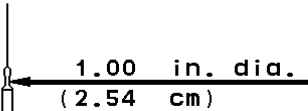
SYSTEM CONSTANTS

NAME	DESCRIPTION	VALUE	UNITS
CSIZ	Casing Size	9.625	Inches
CWEI	Casing Weight	36.00	Pounds/Foot
CCL0	Ccl Offset	0	
SWAN	Sheave Wheel Angle	0.00	Degrees
AMNS	Min Ampl 100% Bond	2	Millivolts
AMXS	Max Ampl 0% Bond	48	Millivolts
TTC	TT Correction	0	Microseconds
DTF	DT Fluid	188.0	Microsec/Foot
TTFF	Fast Formation TT	38.7	Microsec/Foot
CCS	Cement Cmpr Strength	3325.0	PSI
CVEL	Casing Velocity	56.5	Microsec/Foot
MATT	Maximum Attenuation	12.00	Decibels/Foot

1 7/16" Cablehead

Weight 2.2 LB.
 Length 2.54
 Max. Diameter 1.44 IN.

Total Stack Weight 223.0 LBS. in air
 Total Stack Length 27.83 FT.



Slim Hole Centralizer

Weight 15 lbs
Length 2.49 FT.
Max. Diameter 2.750 IN.

Collar Locator

Weight 39.8 LBS.
Length 3.40 FT.
Max. Diameter 2.75 IN.

Slim Hole Gamma Ray

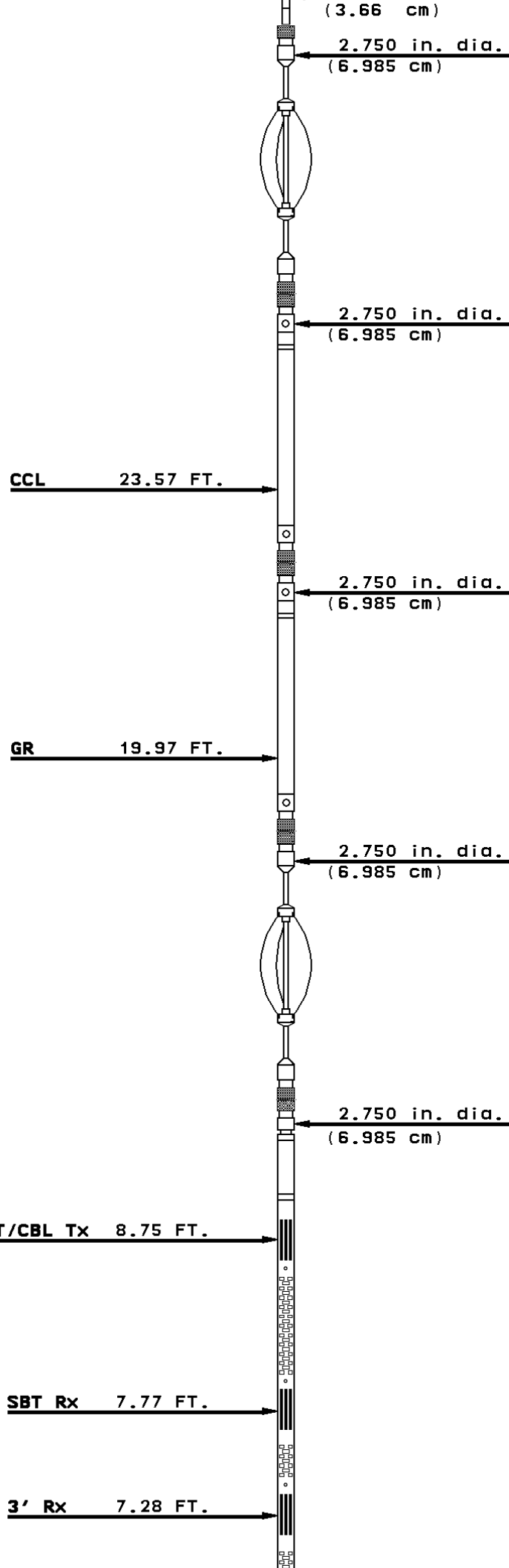
Weight 39.8 LBS.
Length 4.71 FT
Max. Diameter 2.750 IN.

Slim Hole Centralizer

Weight 22 LBS.
Length 3.08 FT.
Max. Diameter 2.750 IN.

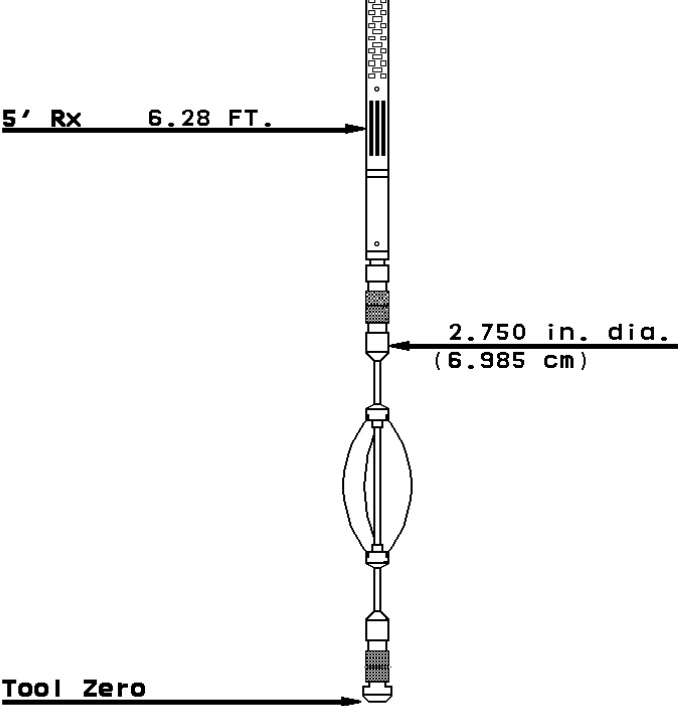
Sector Bond

Weight 89.2 LBS>
Length 10.32 FT.
Max. Diameter 2.750 IN.



Slim Hole Centralizer

Weight 15.0 LBS.
Length 2.82 FT.
Max. Diameter 2.750 IN.



COMPANY	<u>BOPCO, L, P</u>	
WELL	<u>YELLOW CREEK FEDERAL XOM #2-22-1</u>	
FIELD	<u>YELLOW CREEK</u>	
COUNTY	<u>RIO BLANCO</u>	STATE <u>COLORADO</u>



Weatherford®