

Company	XTO Energy, Inc.	Company	XTO Energy, Inc.
Well	Golden Eagle 20-02	Well	Golden Eagle 20-02
Field	Purgatorie River	Field	Purgatorie River
County	Las Animas	County	Las Animas
State	Colorado	State	Colorado
Location:	API # : 05-071-08733-00 273' FNL & 1590' FEL	Permanent Datum Log Measured From Drilling Measured From	Ground Level Ground Level Ground Level
	SEC 20 TWP 33S RGE 67W	Elevation	7746'
		Other Services cdl/neutron see comments	
Date	3-18-06		
Run Number	One		
Depth Driller	2550'		
Depth Logger	2532'		
Bottom Logged Interval	2530'		
Top Log Interval	Surface Casing 8 5/8" @ 906'		
Casing Driller	908		
Casing Logger	7 7/8"		
Bit Size	Water		
Type Fluid in Hole	Water		
Density / Viscosity	Water		
pH / Fluid Loss	Water		
Source of Sample	Water		
Rm @ Meas. Temp	Water		
Rmf @ Meas. Temp	Water		
Rmc @ Meas. Temp	Water		
Source of Rmf / Rmc	Water		
Rm @ BHT	Water		
Time Circulation Stopped	1:30 A.M.		
Time Logger on Bottom	6:15 A.M.		
Maximum Recorded Temperature	109 DEG F		
Equipment Number	T096		
Location	Trinidad		
Recorded By	M. Norton		
Witnessed By	Mr. Don Johnson		

<<< Fold Here >>>

All interpretations are opinions based on inferences from electrical or other measurements and we cannot and do not guarantee the accuracy or correctness of any interpretation, and we shall not, except in the case of gross or willful negligence on our part, be liable or responsible for any loss, costs, damages, or expenses incurred or sustained by anyone resulting from any interpretation made by any of our officers, agents or employees. These interpretations are also subject to our general terms and conditions set out in our current Price Schedule.

### Comments

#### Well Directions

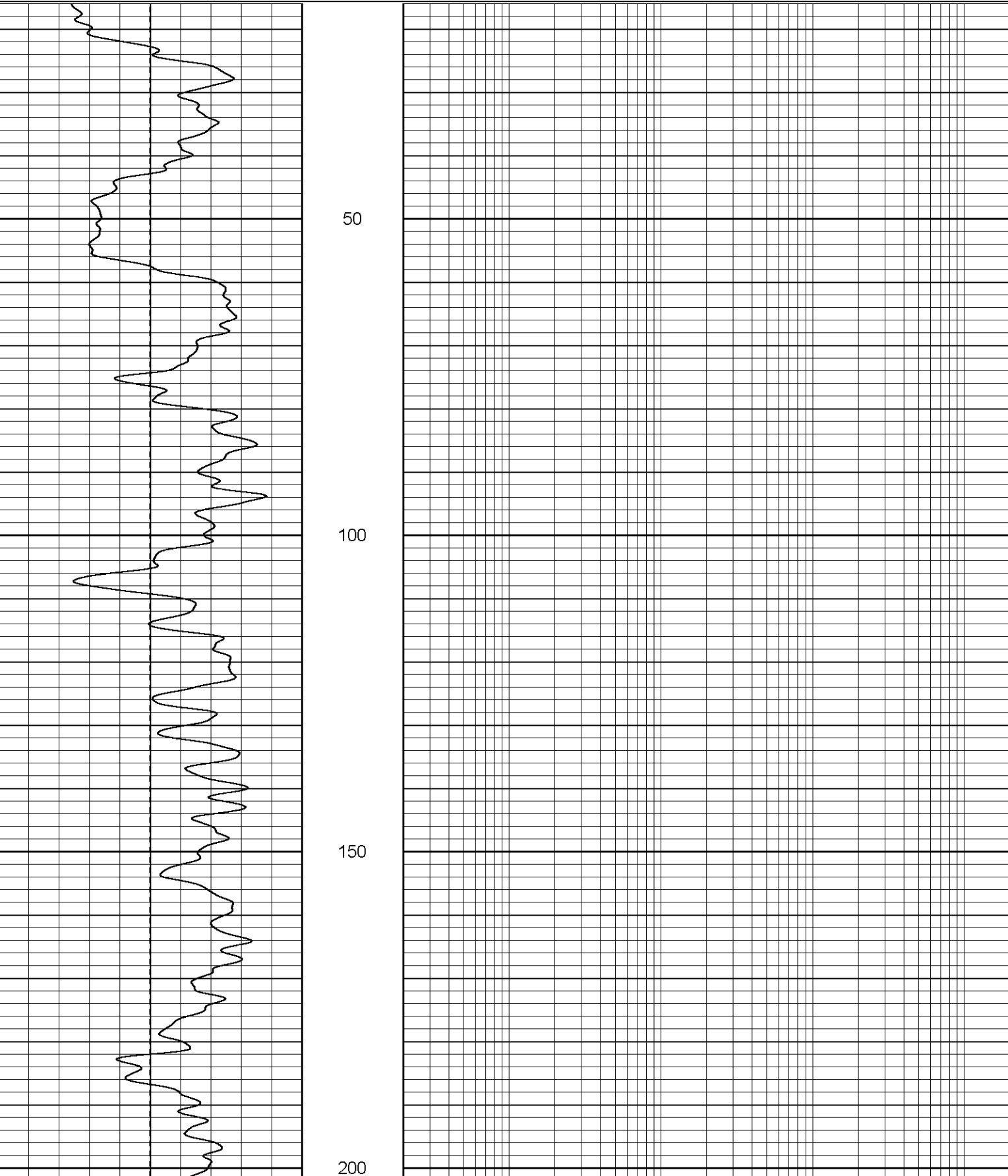
4 Miles West of Weston on Hwy. 12 (Missy Chavez Place)-Turn Right-  
Follow Road to "T"-Turn Right-Follow Road to Top of Hill-stay left on main road. First right to Location.

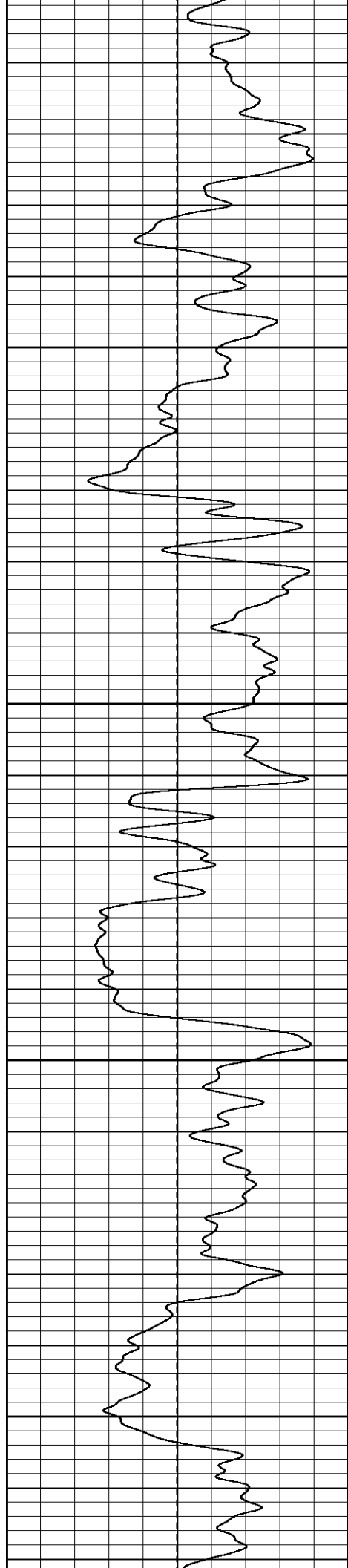
#### REVISED:

Database file name is incorrect due to Golden Eagle 20-02 well being drilled and logged on the Golden Eagle 20-03 location.

Database File: xtoge2003.db  
Dataset Pathname: pass2.1  
Presentation Format: dil  
Dataset Creation: Sat Mar 18 06:45:55 2006 by Calc Warrior 7.0 STD Ope  
Charted by: Depth in Feet scaled 1:240

0	GR (GAPI)	200	0.2	RILM (Ohm-m)	2000
-100	SP (mV)	100	0.2	RILD (Ohm-m)	2000
			0.2	RLL3 (Ohm-m)	2000





250

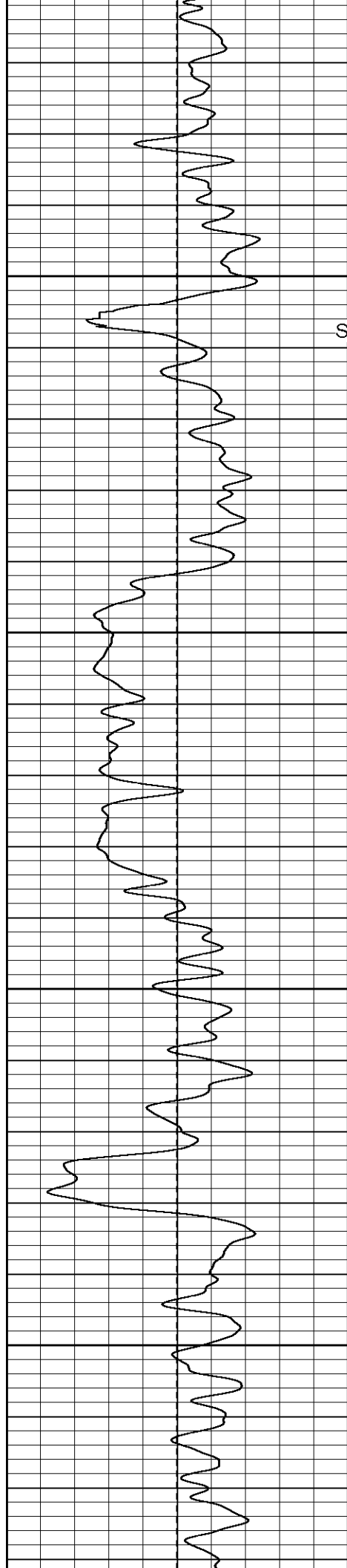
300

350

400







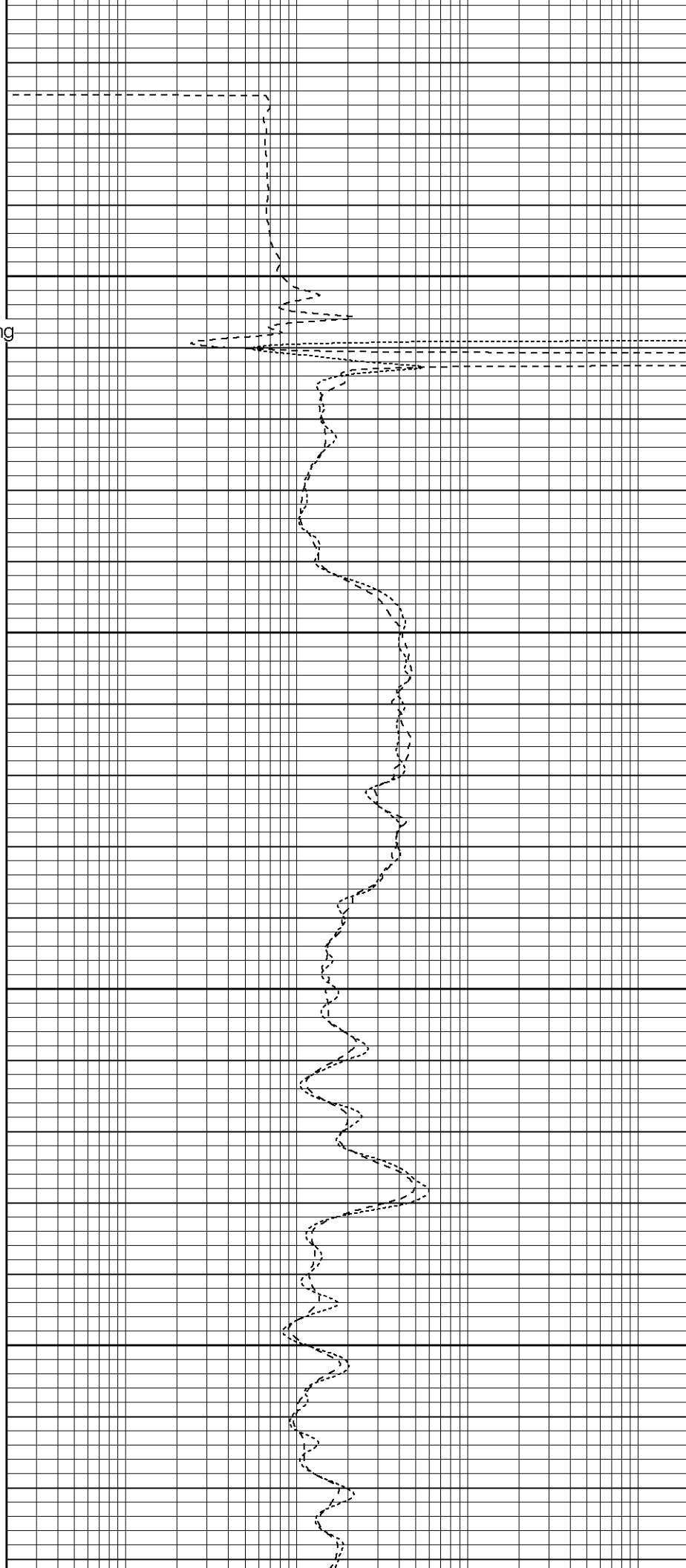
900

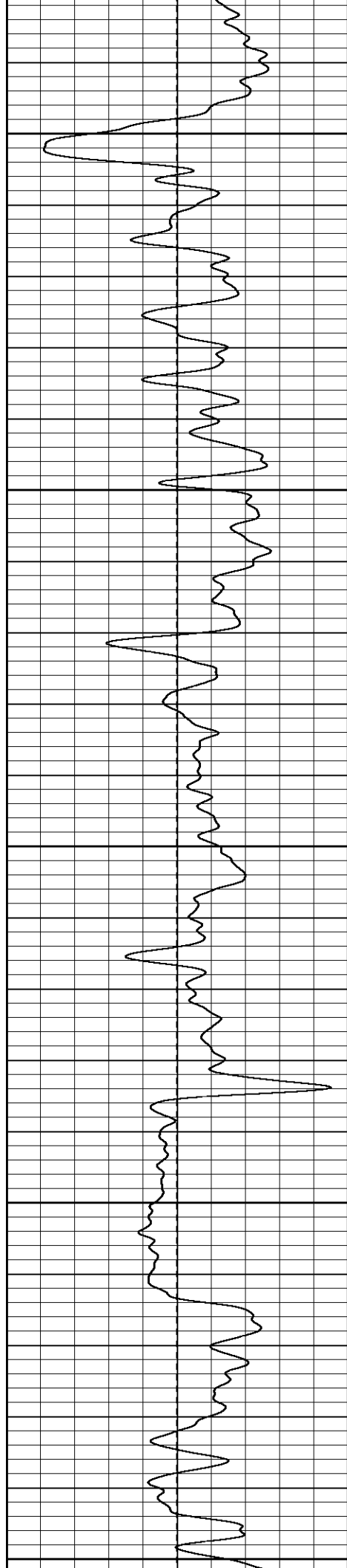
Surface Casing

950

1000

1050





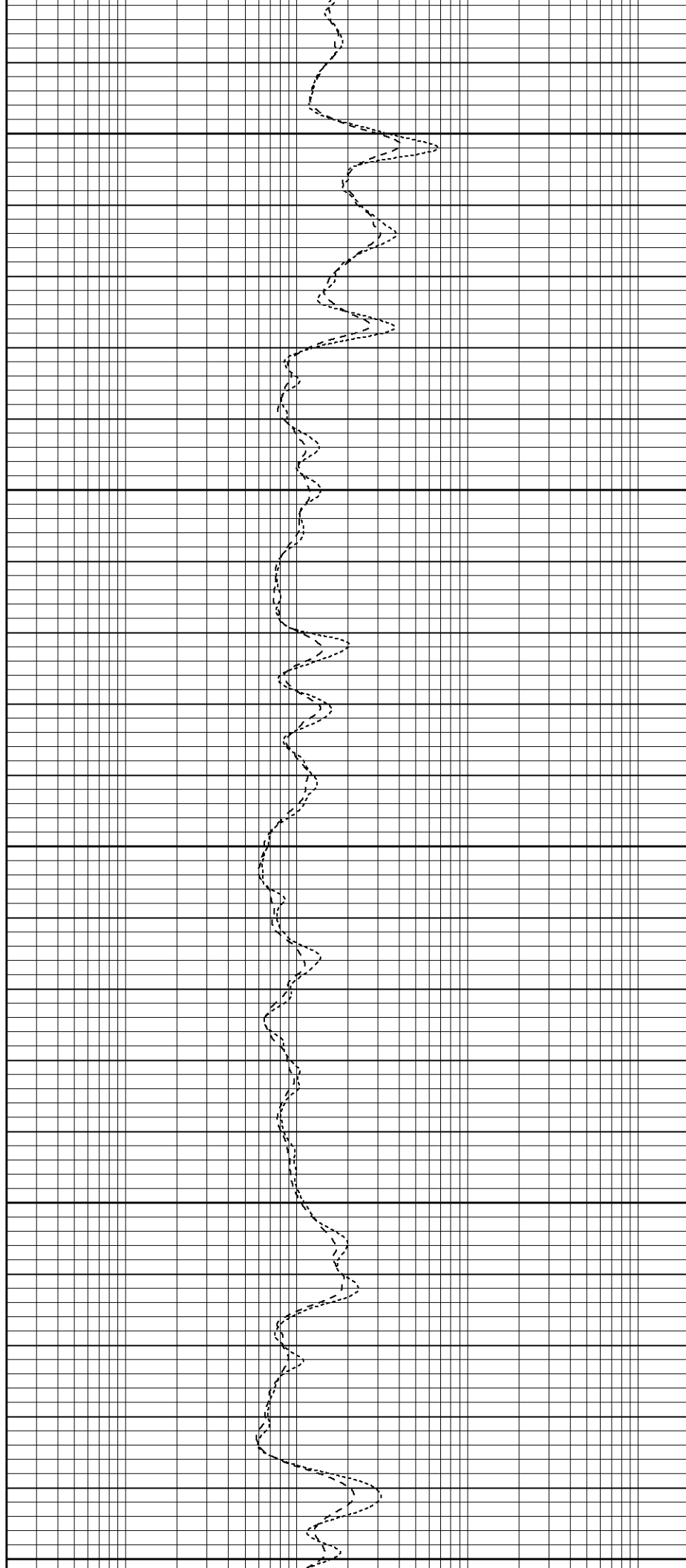
1100

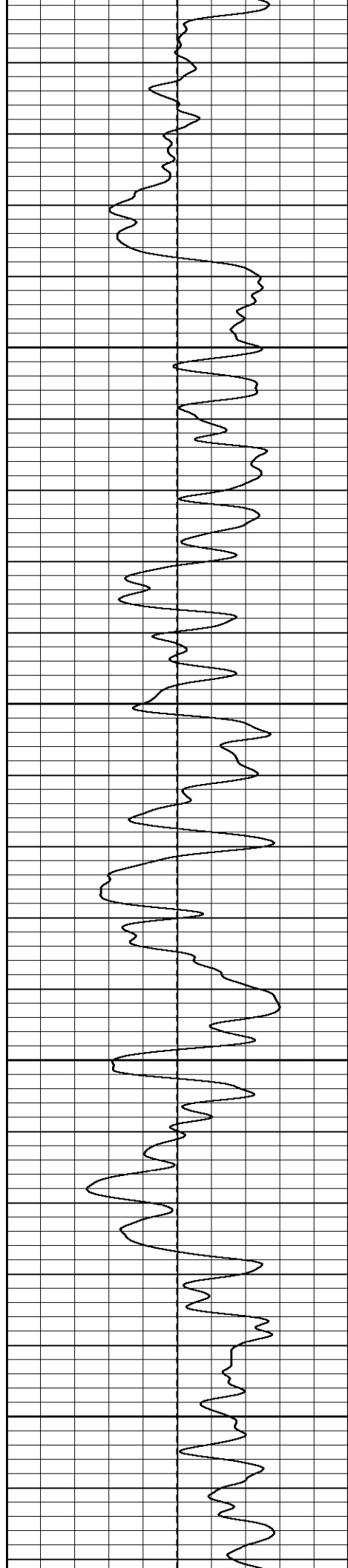
1150

1200

1250

1300



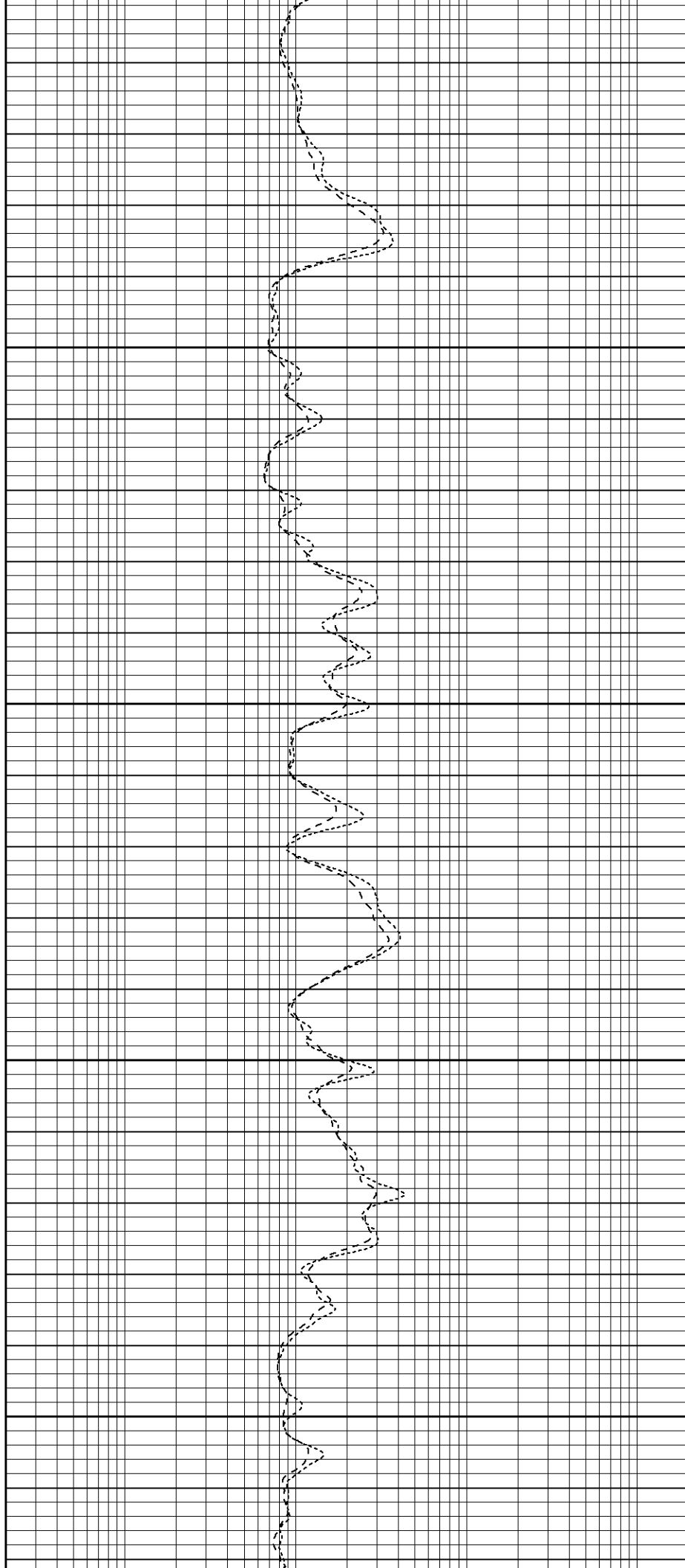


1350

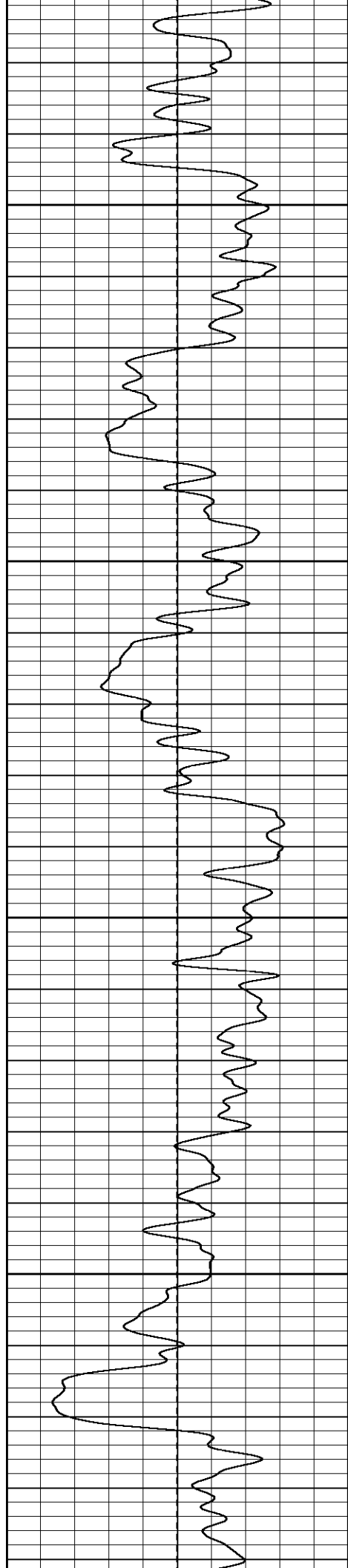
1400

1450

1500





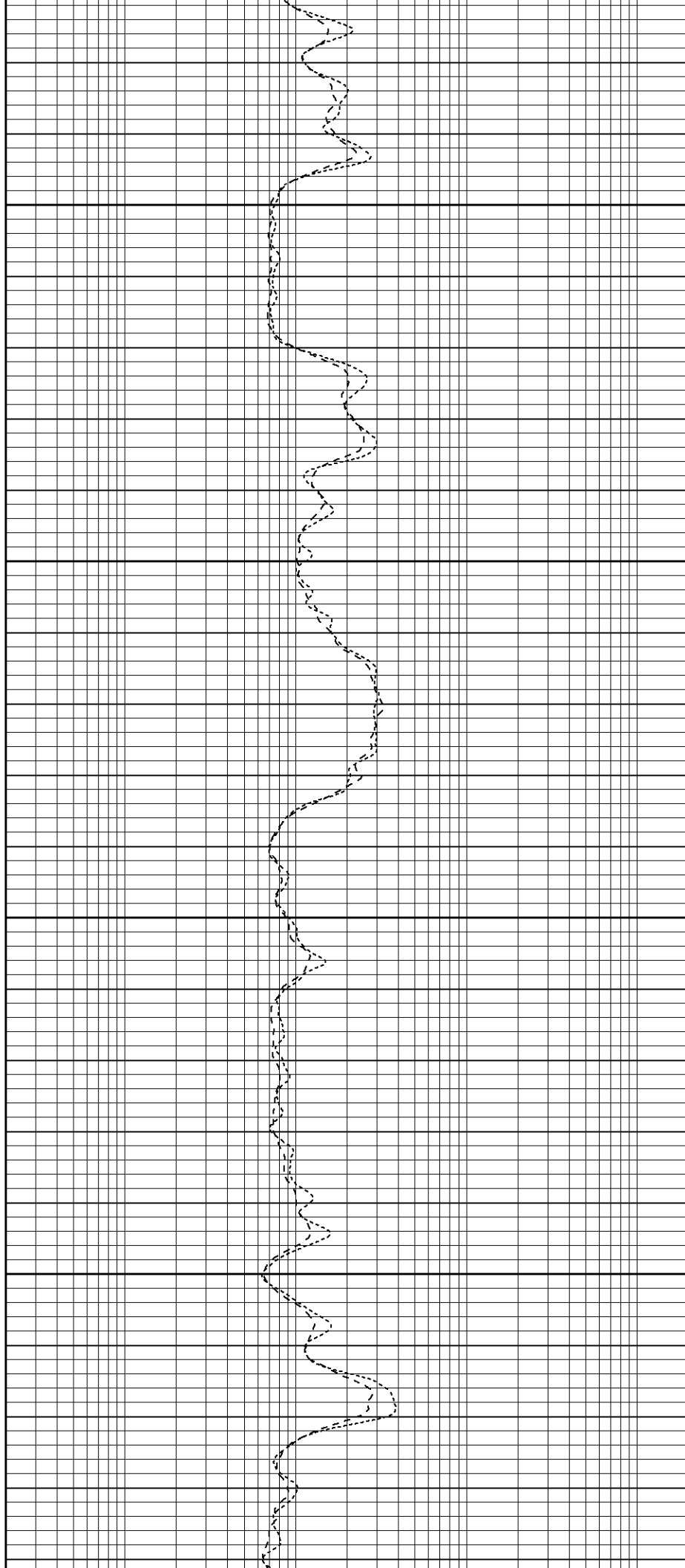


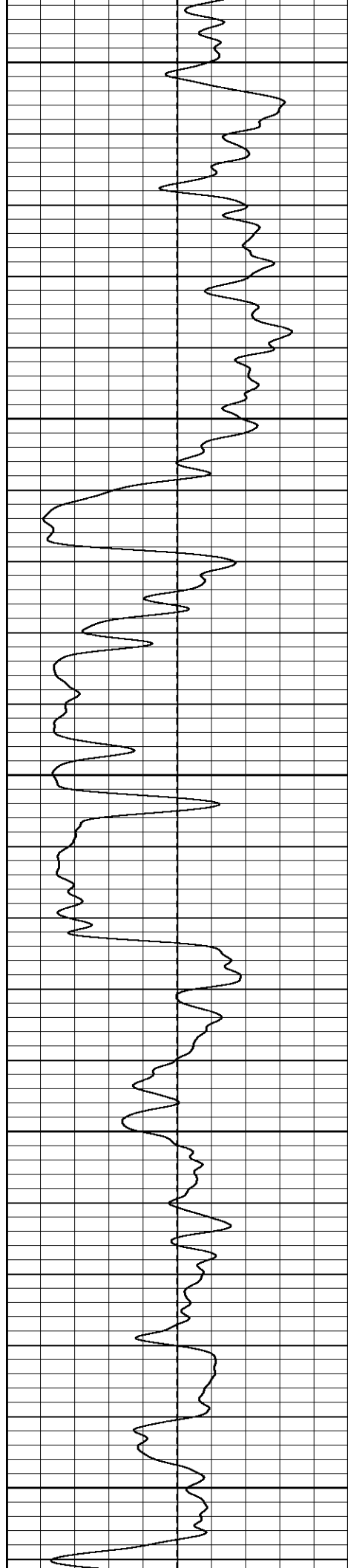
1550

1600

1650

1700





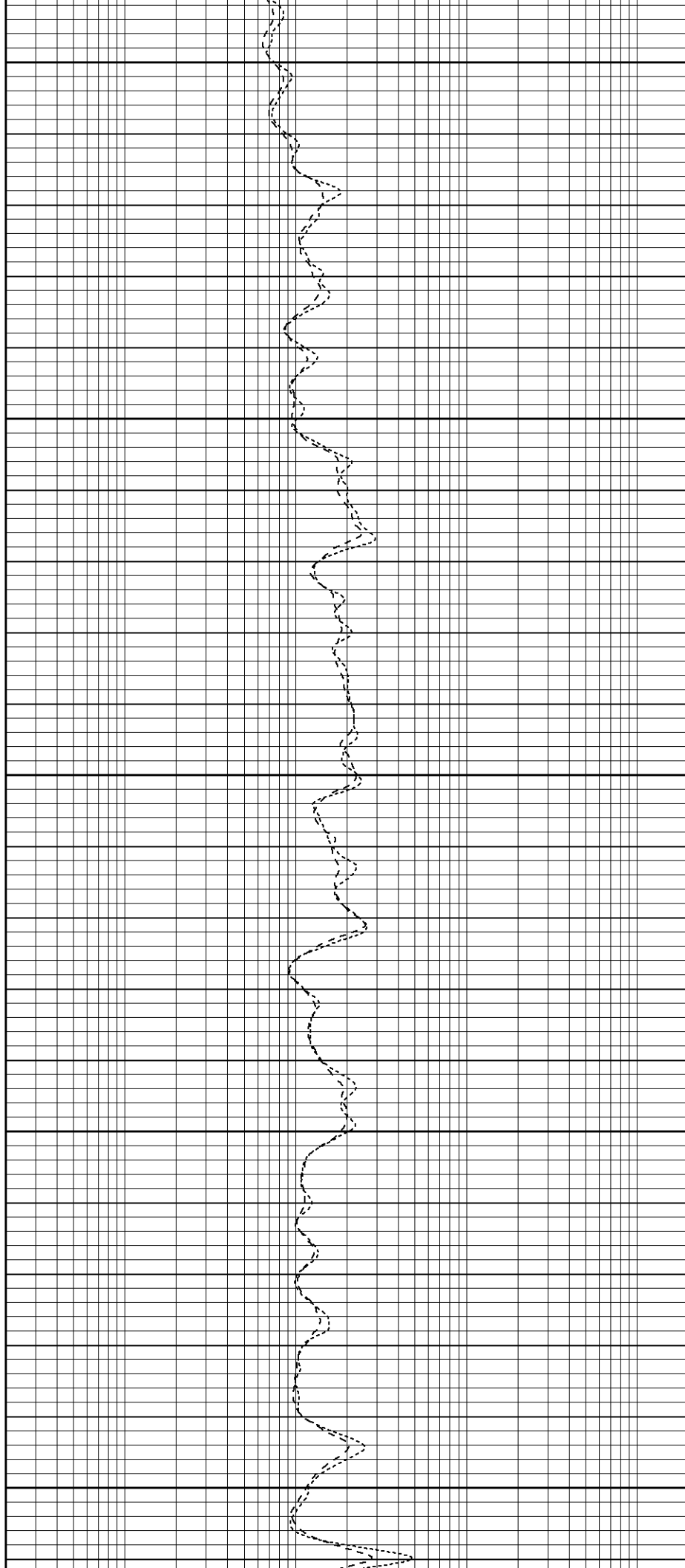
1750

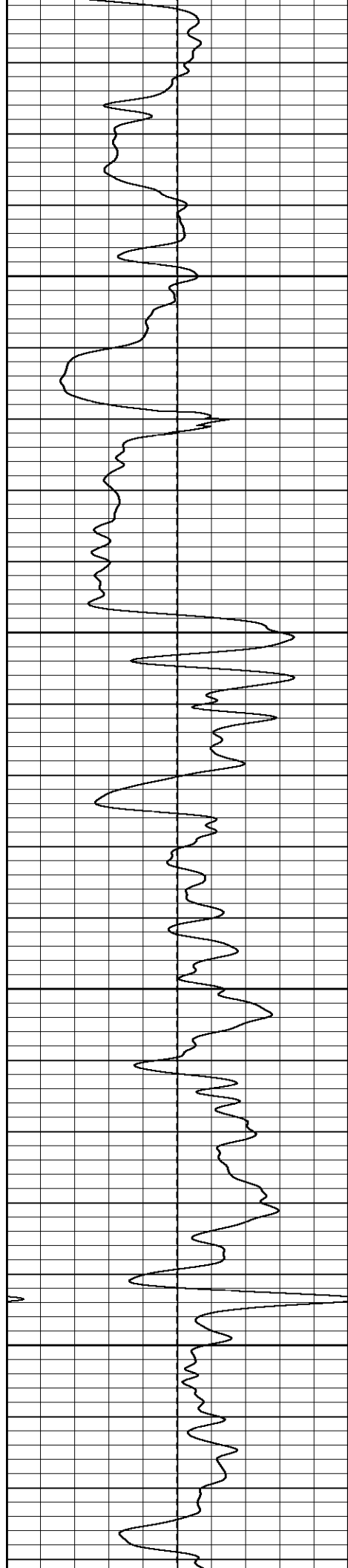
1800

1850

1900

1950



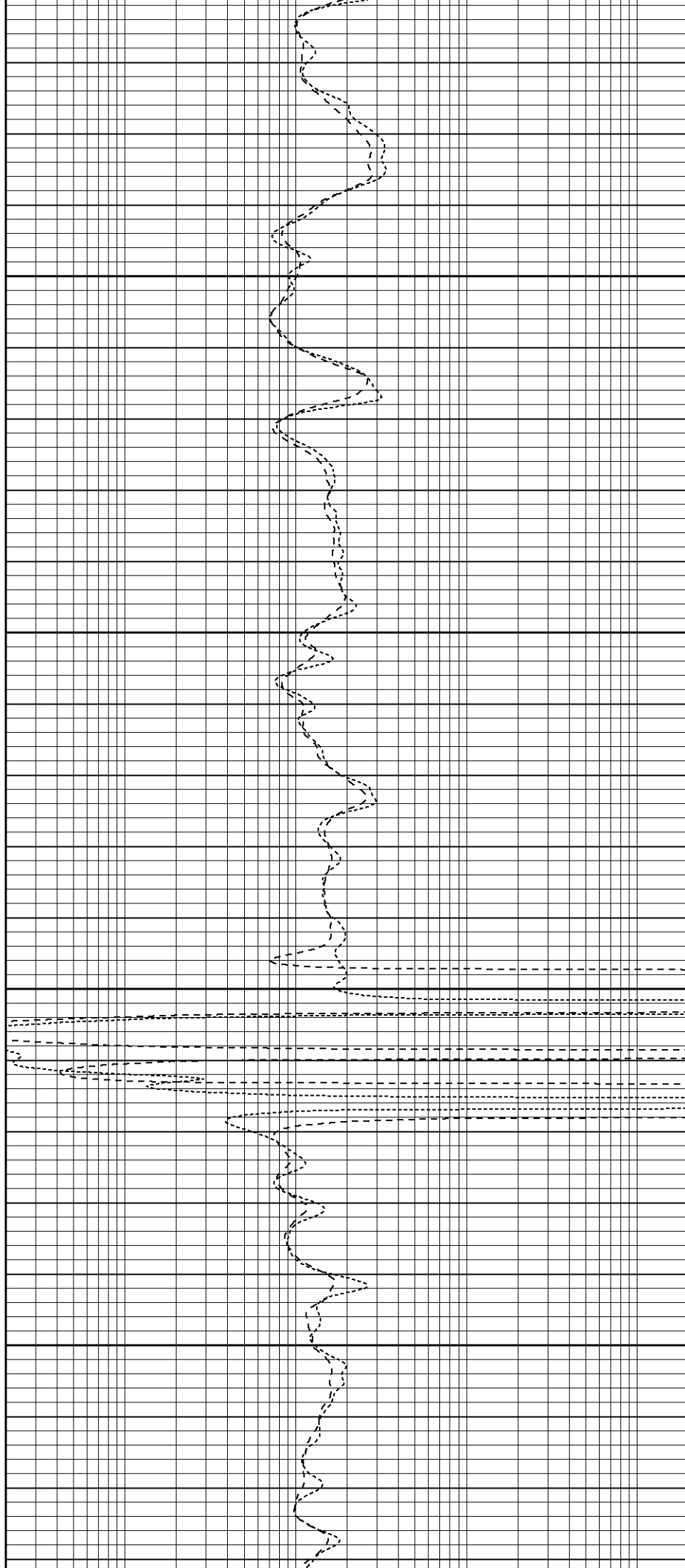


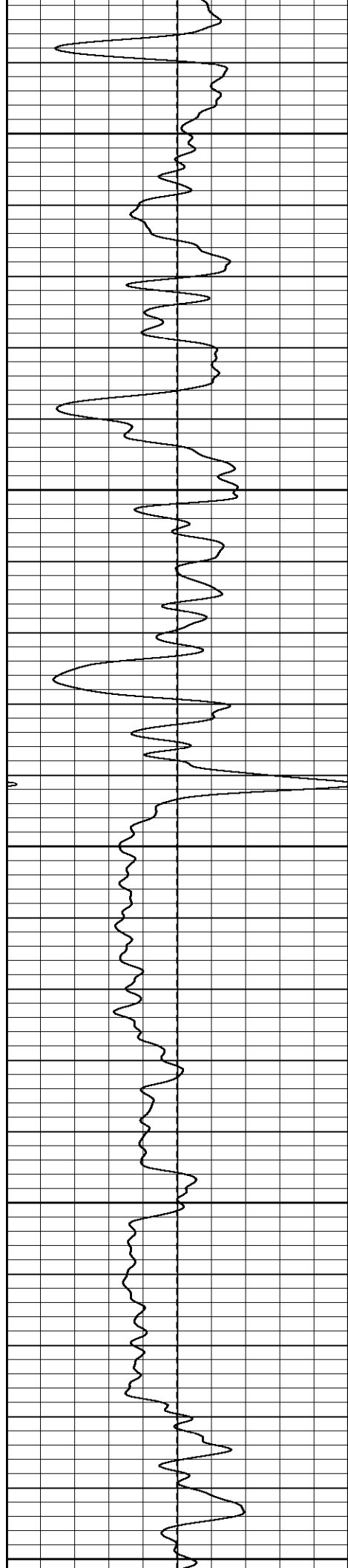
2000

2050

2100

2150





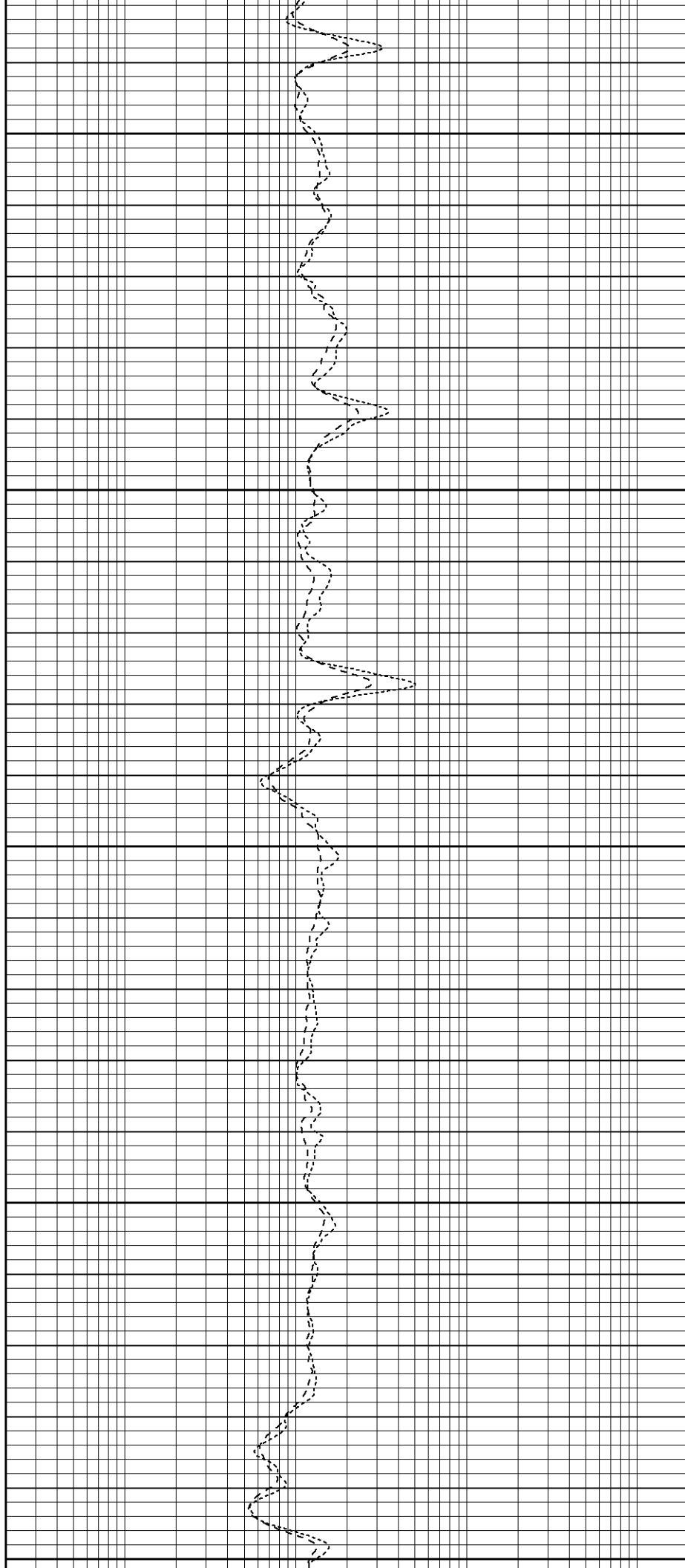
2200

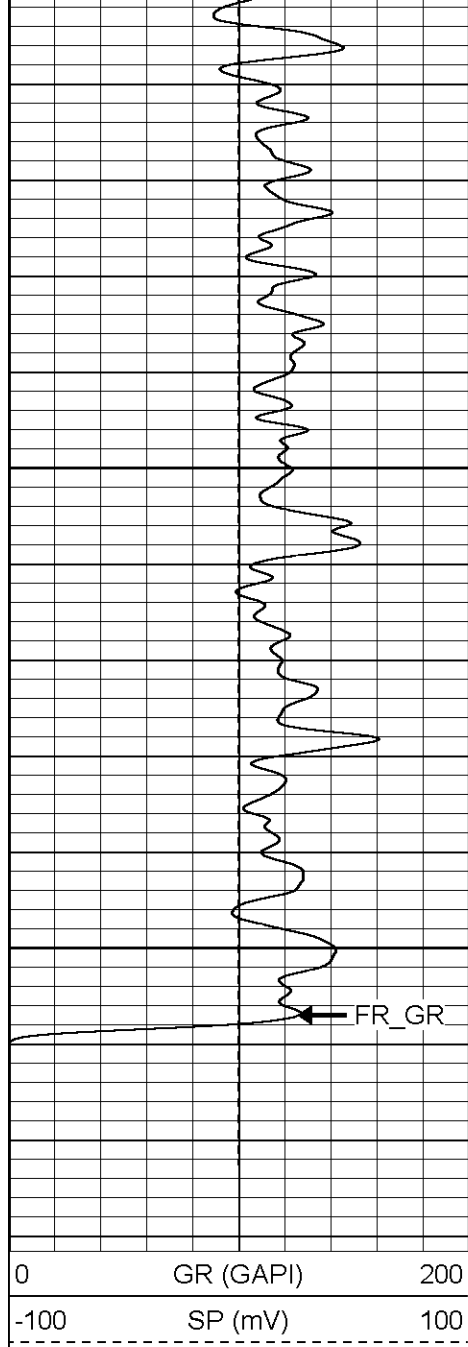
2250

2300

2350

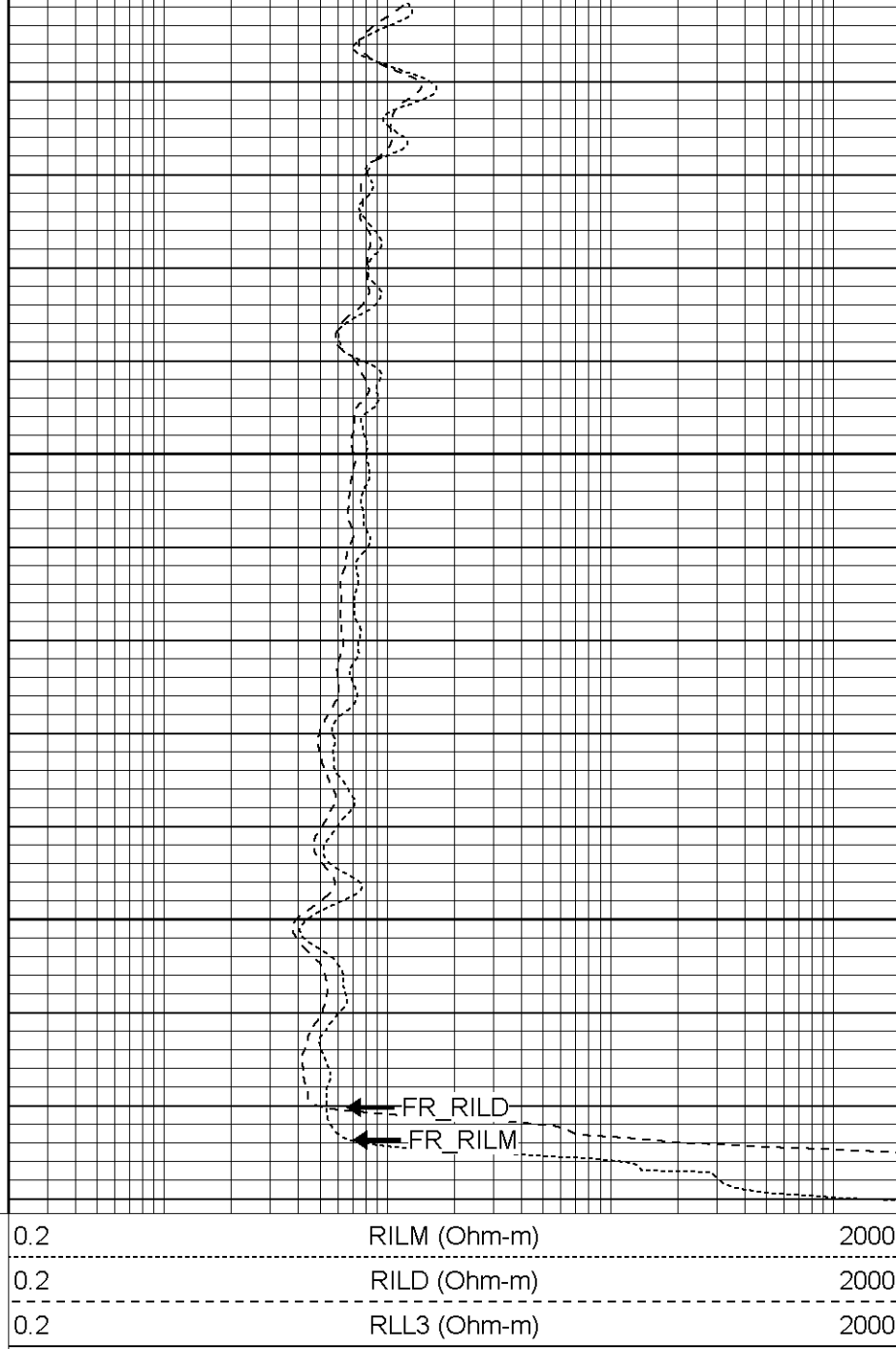
2400





2450

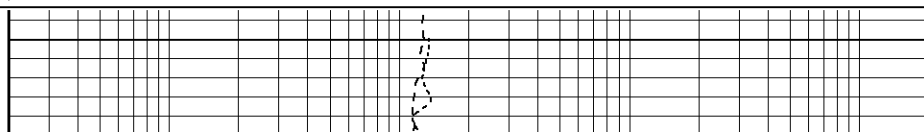
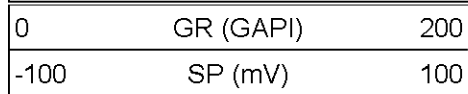
2500

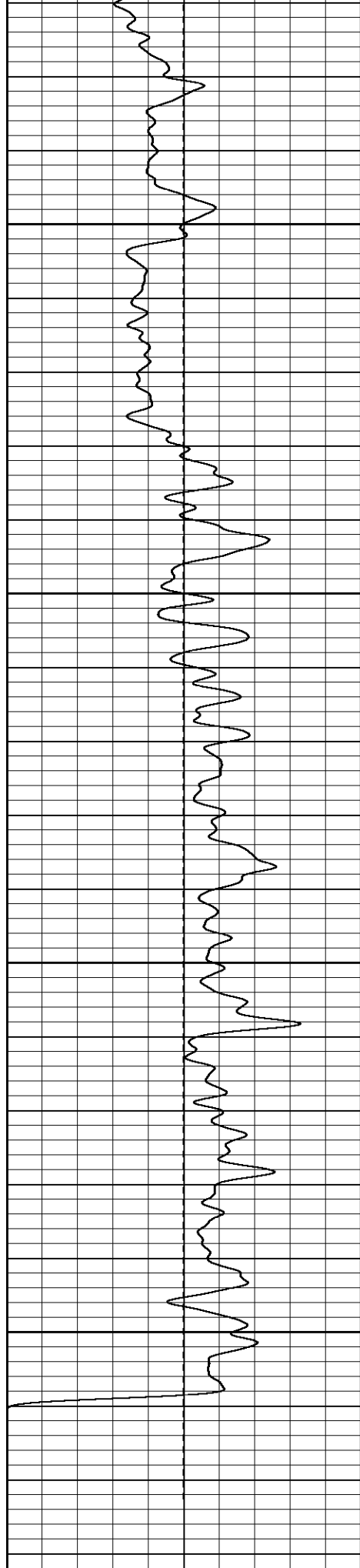


**Patterson**

# Repeat Section

Database File: xtoge2003.db  
 Dataset Pathname: pass1.1  
 Presentation Format: dil  
 Dataset Creation: Sat Mar 18 06:45:16 2006 by Calc Warrior 7.0 STD Ope  
 Charted by: Depth in Feet scaled 1:240





2350

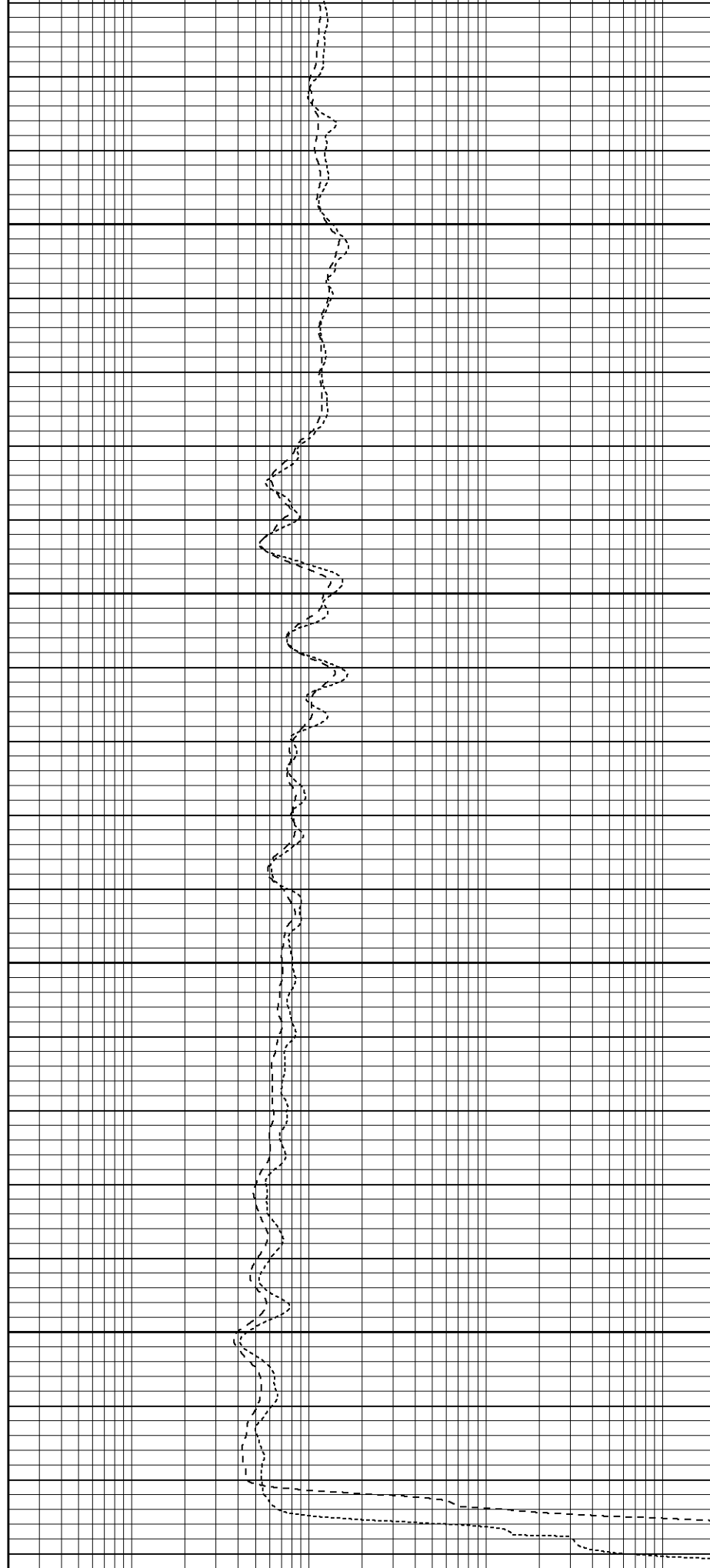
2400

2450

2500

0 GR (GAPI) 200

-100 SP (mV) 100



0.2 RILM (Ohm-m) 2000

0.2 RII D (Ohm-m) 2000

100	CP (mV)	0.2	RLL3 (Ohm-m)	2000
		0.2	RLL3 (Ohm-m)	2000

Dual Induction Calibration Report								
Serial-Model:				5375-G				
Surface Cal Performed:				Mon Feb 13 13:52:53 2006				
Downhole Cal Performed:				Tue Feb 14 23:23:54 2006				
Surface Calibration								
Readings			References				Results	
Loop:	Air	Loop		Air	Loop		m	b
Deep	0.000	0.633	V	0.000	500.000	mmho-m	789.538	0.000
Medium	-0.010	0.752	V	0.000	550.000	mmho-m	722.258	7.223
Internal:	Zero	Cal		Zero	Cal		m	b
Deep	0.012	0.636	V	0.000	500.000	mmho-m	800.610	-9.578
Medium	0.016	0.752	V	0.000	550.000	mmho-m	747.389	-12.066
Downhole Calibration								
Readings			References				Results	
Internal:	Zero	Cal		Zero	Cal		m	b
Deep	1.512	503.799	mmho-m	0.280	502.577	mmho-m	1.000	-1.232
Medium	0.922	551.464	mmho-m	0.370	550.401	mmho-m	0.999	-0.551
Shallow	2.522	0.024	V	500.000	2.000	Ohm-m	0.000	2000.000

Gamma Ray Calibration Report		
Serial Number:	2001	
Tool Model:	OH	
Performed:	Tue Feb 14 10:15:47 2006	
Calibrator Value:	1.0	GAPI
Background Reading:	0.0	cps
Calibrator Reading:	1.0	cps
Sensitivity:	0.1800	GAPI/cps

Sensor	Offset (ft)	Schematic	Description	Len (ft)	OD (in)	Wt (lb)
CHD	25.08		None	0.75	1.50	5.00
GR	22.83		GR-OH (2001) SIE	3.50	3.25	40.00
CILD SP	10.60 10.60		DIL-G (5375) Gearhart	20.83	4.00	345.00

